



# Full wwPDB X-ray Structure Validation Report ⓘ

Aug 23, 2023 – 12:19 PM EDT

PDB ID : 3DHC  
Title : 1.3 Angstrom Structure of N-Acyl Homoserine Lactone Hydrolase with the Product N-Hexanoyl-L-Homocysteine Bound to The catalytic Metal Center  
Authors : Liu, D.; Momb, J.; Thomas, P.W.; Moulin, A.; Petsko, G.A.; Fast, W.; Ringe, D.  
Deposited on : 2008-06-17  
Resolution : 1.30 Å(reported)

This is a Full wwPDB X-ray Structure Validation Report for a publicly released PDB entry.

We welcome your comments at [validation@mail.wwpdb.org](mailto:validation@mail.wwpdb.org)

A user guide is available at

<https://www.wwpdb.org/validation/2017/XrayValidationReportHelp>

with specific help available everywhere you see the ⓘ symbol.

The types of validation reports are described at

<http://www.wwpdb.org/validation/2017/FAQs#types>.

---

The following versions of software and data (see [references ⓘ](#)) were used in the production of this report:

MolProbity : 4.02b-467  
Mogul : 1.8.5 (274361), CSD as541be (2020)  
Xtrriage (Phenix) : 1.13  
EDS : 2.35  
Percentile statistics : 20191225.v01 (using entries in the PDB archive December 25th 2019)  
Refmac : 5.8.0158  
CCP4 : 7.0.044 (Gargrove)  
Ideal geometry (proteins) : Engh & Huber (2001)  
Ideal geometry (DNA, RNA) : Parkinson et al. (1996)  
Validation Pipeline (wwPDB-VP) : 2.35

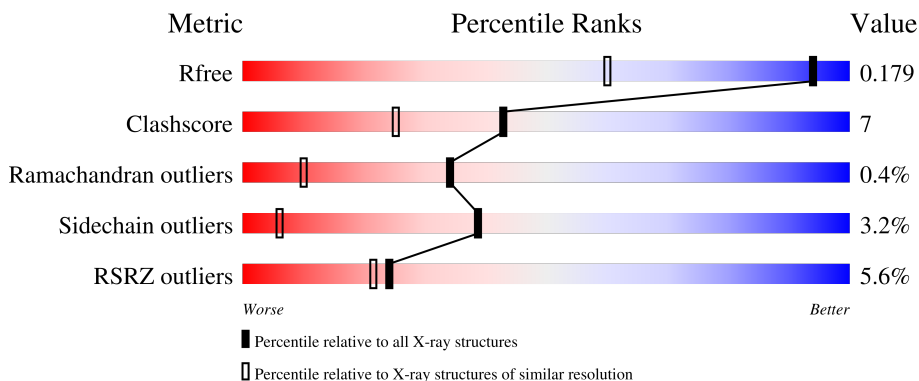
# 1 Overall quality at a glance

The following experimental techniques were used to determine the structure:

*X-RAY DIFFRACTION*

The reported resolution of this entry is 1.30 Å.

Percentile scores (ranging between 0-100) for global validation metrics of the entry are shown in the following graphic. The table shows the number of entries on which the scores are based.



Metric	Whole archive (#Entries)	Similar resolution (#Entries, resolution range(Å))
$R_{free}$	130704	1058 (1.30-1.30)
Clashscore	141614	1101 (1.30-1.30)
Ramachandran outliers	138981	1058 (1.30-1.30)
Sidechain outliers	138945	1058 (1.30-1.30)
RSRZ outliers	127900	1029 (1.30-1.30)

The table below summarises the geometric issues observed across the polymeric chains and their fit to the electron density. The red, orange, yellow and green segments of the lower bar indicate the fraction of residues that contain outliers for  $\geq 3$ , 2, 1 and 0 types of geometric quality criteria respectively. A grey segment represents the fraction of residues that are not modelled. The numeric value for each fraction is indicated below the corresponding segment, with a dot representing fractions  $\leq 5\%$ . The upper red bar (where present) indicates the fraction of residues that have poor fit to the electron density. The numeric value is given above the bar.

Mol	Chain	Length	Quality of chain
1	A	254	

The following table lists non-polymeric compounds, carbohydrate monomers and non-standard residues in protein, DNA, RNA chains that are outliers for geometric or electron-density-fit criteria:

Mol	Type	Chain	Res	Chirality	Geometry	Clashes	Electron density
4	GOL	A	255	-	-	-	X

*Continued on next page...*

*Continued from previous page...*

<b>Mol</b>	<b>Type</b>	<b>Chain</b>	<b>Res</b>	<b>Chirality</b>	<b>Geometry</b>	<b>Clashes</b>	<b>Electron density</b>
4	GOL	A	256	-	-	-	X
4	GOL	A	257	-	-	-	X
4	GOL	A	258	-	-	-	X
4	GOL	A	259	-	-	-	X

## 2 Entry composition [i](#)

There are 5 unique types of molecules in this entry. The entry contains 2384 atoms, of which 0 are hydrogens and 0 are deuteriums.

In the tables below, the ZeroOcc column contains the number of atoms modelled with zero occupancy, the AltConf column contains the number of residues with at least one atom in alternate conformation and the Trace column contains the number of residues modelled with at most 2 atoms.

- Molecule 1 is a protein called N-Acyl Homoserine Lactone Hydrolase.

Mol	Chain	Residues	Atoms					ZeroOcc	AltConf	Trace
			Total	C	N	O	S			
1	A	250	2060	1334	322	391	13	3	19	0

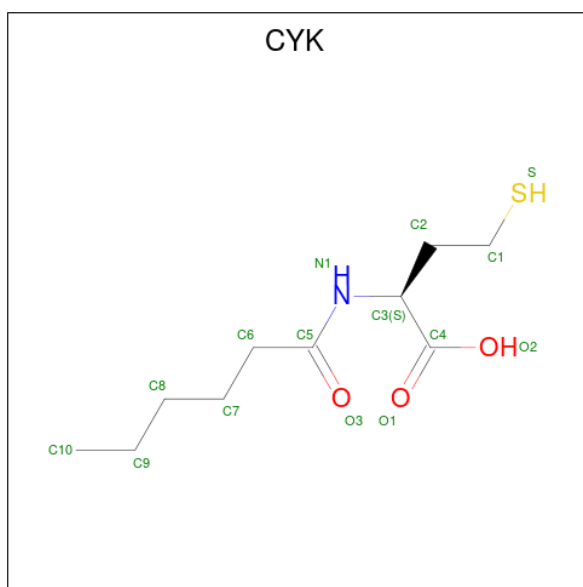
There are 4 discrepancies between the modelled and reference sequences:

Chain	Residue	Modelled	Actual	Comment	Reference
A	-3	GLY	-	expression tag	UNP Q7B8B9
A	-2	ARG	-	expression tag	UNP Q7B8B9
A	-1	ILE	-	expression tag	UNP Q7B8B9
A	0	SER	-	expression tag	UNP Q7B8B9

- Molecule 2 is ZINC ION (three-letter code: ZN) (formula: Zn).

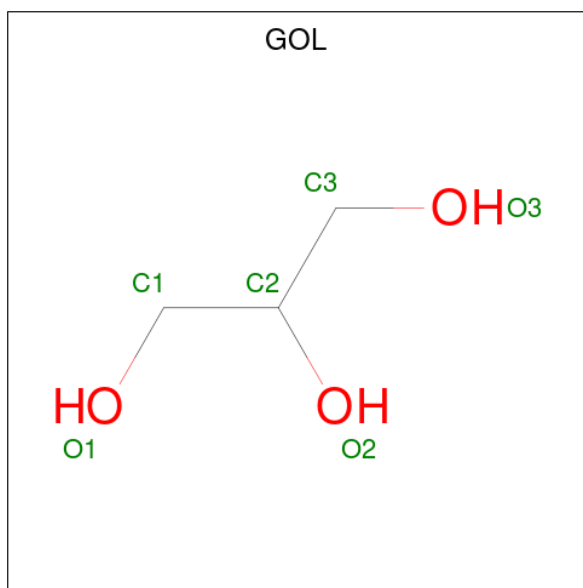
Mol	Chain	Residues	Atoms		ZeroOcc	AltConf
2	A	2	Total	Zn	0	0
			2	2		

- Molecule 3 is N-hexanoyl-L-homocysteine (three-letter code: CYK) (formula: C<sub>10</sub>H<sub>19</sub>NO<sub>3</sub>S).



Mol	Chain	Residues	Atoms					ZeroOcc	AltConf
			Total	C	N	O	S		
3	A	1	15	10	1	3	1	0	0

- Molecule 4 is GLYCEROL (three-letter code: GOL) (formula:  $C_3H_8O_3$ ).



Mol	Chain	Residues	Atoms			ZeroOcc	AltConf
			Total	C	O		
4	A	1	6	3	3	0	0
4	A	1	6	3	3	0	0
4	A	1	6	3	3	0	0

*Continued on next page...*

*Continued from previous page...*

Mol	Chain	Residues	Atoms	ZeroOcc	AltConf
4	A	1	Total C O 6 3 3	0	0
4	A	1	Total C O 6 3 3	0	0
4	A	1	Total C O 6 3 3	0	0

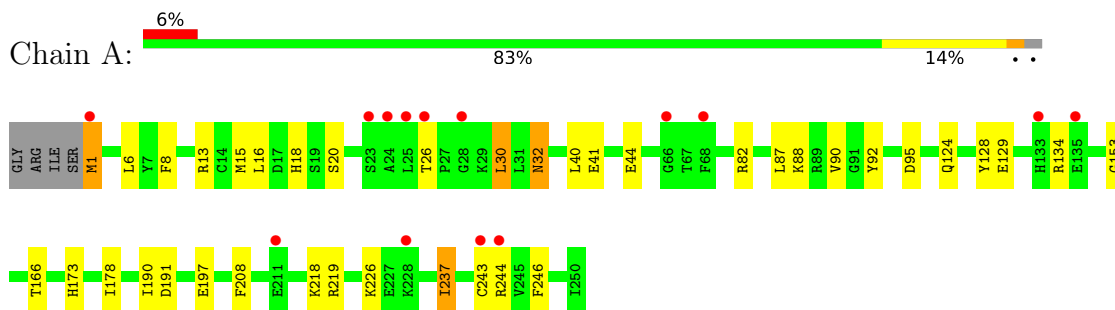
- Molecule 5 is water.

Mol	Chain	Residues	Atoms	ZeroOcc	AltConf
5	A	271	Total O 271 271	0	0

### 3 Residue-property plots [i](#)

These plots are drawn for all protein, RNA, DNA and oligosaccharide chains in the entry. The first graphic for a chain summarises the proportions of the various outlier classes displayed in the second graphic. The second graphic shows the sequence view annotated by issues in geometry and electron density. Residues are color-coded according to the number of geometric quality criteria for which they contain at least one outlier: green = 0, yellow = 1, orange = 2 and red = 3 or more. A red dot above a residue indicates a poor fit to the electron density ( $RSRZ > 2$ ). Stretches of 2 or more consecutive residues without any outlier are shown as a green connector. Residues present in the sample, but not in the model, are shown in grey.

- Molecule 1: N-Acyl Homoserine Lactone Hydrolase



## 4 Data and refinement statistics

Property	Value	Source
Space group	P 21 21 21	Depositor
Cell constants a, b, c, $\alpha$ , $\beta$ , $\gamma$	54.77Å 55.46Å 79.19Å 90.00° 90.00° 90.00°	Depositor
Resolution (Å)	23.62 – 1.30 23.61 – 1.30	Depositor EDS
% Data completeness (in resolution range)	94.4 (23.62-1.30) 94.4 (23.61-1.30)	Depositor EDS
$R_{merge}$	0.05	Depositor
$R_{sym}$	(Not available)	Depositor
$\langle I/\sigma(I) \rangle$ <sup>1</sup>	2.16 (at 1.30Å)	Xtrriage
Refinement program	REFMAC 5.2.0019	Depositor
R, $R_{free}$	0.143 , 0.183 0.139 , 0.179	Depositor DCC
$R_{free}$ test set	2869 reflections (5.06%)	wwPDB-VP
Wilson B-factor (Å <sup>2</sup> )	14.5	Xtrriage
Anisotropy	0.353	Xtrriage
Bulk solvent $k_{sol}$ (e/Å <sup>3</sup> ), $B_{sol}$ (Å <sup>2</sup> )	0.42 , 59.4	EDS
L-test for twinning <sup>2</sup>	$\langle  L  \rangle = 0.50$ , $\langle L^2 \rangle = 0.33$	Xtrriage
Estimated twinning fraction	0.018 for k,h,-l	Xtrriage
$F_o, F_c$ correlation	0.98	EDS
Total number of atoms	2384	wwPDB-VP
Average B, all atoms (Å <sup>2</sup> )	21.0	wwPDB-VP

Xtrriage's analysis on translational NCS is as follows: *The largest off-origin peak in the Patterson function is 6.42% of the height of the origin peak. No significant pseudotranslation is detected.*

<sup>1</sup>Intensities estimated from amplitudes.

<sup>2</sup>Theoretical values of  $\langle |L| \rangle$ ,  $\langle L^2 \rangle$  for acentric reflections are 0.5, 0.333 respectively for untwinned datasets, and 0.375, 0.2 for perfectly twinned datasets.



## 5 Model quality [i](#)

### 5.1 Standard geometry [i](#)

Bond lengths and bond angles in the following residue types are not validated in this section: GOL, CYK, ZN

The Z score for a bond length (or angle) is the number of standard deviations the observed value is removed from the expected value. A bond length (or angle) with  $|Z| > 5$  is considered an outlier worth inspection. RMSZ is the root-mean-square of all Z scores of the bond lengths (or angles).

Mol	Chain	Bond lengths		Bond angles	
		RMSZ	# Z  >5	RMSZ	# Z  >5
1	A	1.35	5/2188 (0.2%)	1.63	9/2966 (0.3%)

All (5) bond length outliers are listed below:

Mol	Chain	Res	Type	Atoms	Z	Observed(Å)	Ideal(Å)
1	A	1[B]	MET	N-CA	29.14	2.04	1.46
1	A	1[A]	MET	N-CA	29.14	2.04	1.46
1	A	129	GLU	CD-OE2	8.67	1.35	1.25
1	A	129	GLU	CG-CD	5.25	1.59	1.51
1	A	128	TYR	CE1-CZ	-5.21	1.31	1.38

All (9) bond angle outliers are listed below:

Mol	Chain	Res	Type	Atoms	Z	Observed(°)	Ideal(°)
1	A	1[B]	MET	N-CA-CB	-48.11	24.00	110.60
1	A	1[A]	MET	N-CA-CB	-48.11	24.00	110.60
1	A	82	ARG	NE-CZ-NH1	11.45	126.03	120.30
1	A	1[B]	MET	N-CA-C	-8.20	88.86	111.00
1	A	1[A]	MET	N-CA-C	-8.20	88.86	111.00
1	A	237	ILE	CG1-CB-CG2	7.38	127.64	111.40
1	A	219	ARG	CG-CD-NE	-5.27	100.72	111.80
1	A	95	ASP	CB-CG-OD1	5.23	123.00	118.30
1	A	82	ARG	NE-CZ-NH2	-5.20	117.70	120.30

There are no chirality outliers.

There are no planarity outliers.

## 5.2 Too-close contacts

In the following table, the Non-H and H(model) columns list the number of non-hydrogen atoms and hydrogen atoms in the chain respectively. The H(added) column lists the number of hydrogen atoms added and optimized by MolProbity. The Clashes column lists the number of clashes within the asymmetric unit, whereas Symm-Clashes lists symmetry-related clashes.

Mol	Chain	Non-H	H(model)	H(added)	Clashes	Symm-Clashes
1	A	2060	0	2044	29	0
2	A	2	0	0	0	0
3	A	15	0	18	1	0
4	A	36	0	48	1	0
5	A	271	0	0	5	0
All	All	2384	0	2110	29	0

The all-atom clashscore is defined as the number of clashes found per 1000 atoms (including hydrogen atoms). The all-atom clashscore for this structure is 7.

All (29) close contacts within the same asymmetric unit are listed below, sorted by their clash magnitude.

Atom-1	Atom-2	Interatomic distance (Å)	Clash overlap (Å)
1:A:124:GLN:HE22	1:A:153:GLY:H	1.19	0.89
1:A:244:ARG:NH2	5:A:274:HOH:O	2.21	0.74
1:A:44[A]:GLU:OE1	5:A:371:HOH:O	2.13	0.67
1:A:30[B]:LEU:HD21	5:A:484:HOH:O	1.96	0.65
1:A:173:HIS:HE1	1:A:191:ASP:H	1.48	0.61
1:A:6:LEU:HD13	1:A:40[A]:LEU:CD2	2.32	0.59
1:A:173:HIS:CE1	1:A:191:ASP:H	2.22	0.58
1:A:90[B]:VAL:HG23	1:A:246:PHE:CE2	2.40	0.56
1:A:13:ARG:HE	1:A:32:ASN:ND2	2.02	0.56
1:A:32:ASN:HD22	1:A:32:ASN:C	2.10	0.55
1:A:226:LYS:NZ	5:A:419:HOH:O	2.32	0.55
1:A:8:PHE:CD2	1:A:243[A]:CYS:SG	3.00	0.54
1:A:134:ARG:HD2	4:A:258:GOL:H32	1.89	0.53
1:A:6:LEU:HD13	1:A:40[A]:LEU:HD23	1.91	0.52
1:A:16[A]:LEU:HG	1:A:20[A]:SER:HB2	1.93	0.51
1:A:41[A]:GLU:OE1	1:A:92:TYR:OH	2.21	0.49
1:A:6:LEU:HD13	1:A:40[A]:LEU:HD21	1.96	0.48
1:A:15[A]:MET:HE1	1:A:30[A]:LEU:HB3	1.96	0.48
1:A:166:THR:OG1	1:A:173:HIS:HD2	1.97	0.48
1:A:87:LEU:O	1:A:90[B]:VAL:HG12	2.16	0.46
1:A:218[A]:LYS:HD2	5:A:356:HOH:O	2.15	0.46
1:A:90[B]:VAL:HG23	1:A:246:PHE:CZ	2.51	0.45

*Continued on next page...*

Continued from previous page...

Atom-1	Atom-2	Interatomic distance (Å)	Clash overlap (Å)
1:A:16[B]:LEU:HD22	3:A:253:CYK:S	2.57	0.44
1:A:40[B]:LEU:HD21	1:A:178[B]:ILE:HD12	2.02	0.41
1:A:88:LYS:HD2	1:A:88:LYS:HA	1.89	0.41
1:A:40[A]:LEU:HD21	1:A:178[A]:ILE:HD13	2.03	0.40

There are no symmetry-related clashes.

## 5.3 Torsion angles [i](#)

### 5.3.1 Protein backbone [i](#)

In the following table, the Percentiles column shows the percent Ramachandran outliers of the chain as a percentile score with respect to all X-ray entries followed by that with respect to entries of similar resolution.

The Analysed column shows the number of residues for which the backbone conformation was analysed, and the total number of residues.

Mol	Chain	Analysed	Favoured	Allowed	Outliers	Percentiles
1	A	266/254 (105%)	257 (97%)	8 (3%)	1 (0%)	34 10

All (1) Ramachandran outliers are listed below:

Mol	Chain	Res	Type
1	A	190	ILE

### 5.3.2 Protein sidechains [i](#)

In the following table, the Percentiles column shows the percent sidechain outliers of the chain as a percentile score with respect to all X-ray entries followed by that with respect to entries of similar resolution.

The Analysed column shows the number of residues for which the sidechain conformation was analysed, and the total number of residues.

Mol	Chain	Analysed	Rotameric	Outliers	Percentiles
1	A	241/225 (107%)	232 (96%)	9 (4%)	34 3

All (9) residues with a non-rotameric sidechain are listed below:

Mol	Chain	Res	Type
1	A	1[B]	MET
1	A	1[A]	MET
1	A	18	HIS
1	A	26	THR
1	A	30[A]	LEU
1	A	30[B]	LEU
1	A	32	ASN
1	A	208	PHE
1	A	237	ILE

Sometimes sidechains can be flipped to improve hydrogen bonding and reduce clashes. All (8) such sidechains are listed below:

Mol	Chain	Res	Type
1	A	32	ASN
1	A	60	ASN
1	A	85	ASN
1	A	124	GLN
1	A	133	HIS
1	A	147	ASN
1	A	162	GLN
1	A	173	HIS

### 5.3.3 RNA [i](#)

There are no RNA molecules in this entry.

## 5.4 Non-standard residues in protein, DNA, RNA chains [i](#)

There are no non-standard protein/DNA/RNA residues in this entry.

## 5.5 Carbohydrates [i](#)

There are no monosaccharides in this entry.

## 5.6 Ligand geometry [i](#)

Of 9 ligands modelled in this entry, 2 are monoatomic - leaving 7 for Mogul analysis.

In the following table, the Counts columns list the number of bonds (or angles) for which Mogul statistics could be retrieved, the number of bonds (or angles) that are observed in the model and

the number of bonds (or angles) that are defined in the Chemical Component Dictionary. The Link column lists molecule types, if any, to which the group is linked. The Z score for a bond length (or angle) is the number of standard deviations the observed value is removed from the expected value. A bond length (or angle) with  $|Z| > 2$  is considered an outlier worth inspection. RMSZ is the root-mean-square of all Z scores of the bond lengths (or angles).

Mol	Type	Chain	Res	Link	Bond lengths			Bond angles		
					Counts	RMSZ	# Z  > 2	Counts	RMSZ	# Z  > 2
3	CYK	A	253	2	14,14,14	1.42	1 (7%)	15,16,16	1.61	3 (20%)
4	GOL	A	256	-	5,5,5	0.39	0	5,5,5	0.28	0
4	GOL	A	255	-	5,5,5	0.38	0	5,5,5	0.30	0
4	GOL	A	254	-	5,5,5	0.55	0	5,5,5	0.64	0
4	GOL	A	257	-	5,5,5	0.42	0	5,5,5	0.29	0
4	GOL	A	259	-	5,5,5	0.47	0	5,5,5	0.18	0
4	GOL	A	258	-	5,5,5	0.42	0	5,5,5	0.12	0

In the following table, the Chirals column lists the number of chiral outliers, the number of chiral centers analysed, the number of these observed in the model and the number defined in the Chemical Component Dictionary. Similar counts are reported in the Torsion and Rings columns. '-' means no outliers of that kind were identified.

Mol	Type	Chain	Res	Link	Chirals	Torsions	Rings
3	CYK	A	253	2	-	3/16/16/16	-
4	GOL	A	256	-	-	2/4/4/4	-
4	GOL	A	255	-	-	0/4/4/4	-
4	GOL	A	254	-	-	2/4/4/4	-
4	GOL	A	257	-	-	2/4/4/4	-
4	GOL	A	259	-	-	2/4/4/4	-
4	GOL	A	258	-	-	2/4/4/4	-

All (1) bond length outliers are listed below:

Mol	Chain	Res	Type	Atoms	Z	Observed(Å)	Ideal(Å)
3	A	253	CYK	O2-C4	-4.37	1.16	1.30

All (3) bond angle outliers are listed below:

Mol	Chain	Res	Type	Atoms	Z	Observed(°)	Ideal(°)
3	A	253	CYK	O2-C4-O1	-3.69	115.71	124.09
3	A	253	CYK	C2-C1-S	-3.18	110.43	113.74
3	A	253	CYK	O2-C4-C3	2.96	123.23	113.40

There are no chirality outliers.

All (13) torsion outliers are listed below:

Mol	Chain	Res	Type	Atoms
3	A	253	CYK	C1-C2-C3-C4
3	A	253	CYK	C1-C2-C3-N1
4	A	254	GOL	O1-C1-C2-C3
4	A	256	GOL	C1-C2-C3-O3
4	A	257	GOL	O1-C1-C2-C3
4	A	259	GOL	C1-C2-C3-O3
4	A	256	GOL	O2-C2-C3-O3
3	A	253	CYK	C7-C8-C9-C10
4	A	254	GOL	O1-C1-C2-O2
4	A	258	GOL	O1-C1-C2-C3
4	A	257	GOL	O1-C1-C2-O2
4	A	258	GOL	O1-C1-C2-O2
4	A	259	GOL	O2-C2-C3-O3

There are no ring outliers.

2 monomers are involved in 2 short contacts:

Mol	Chain	Res	Type	Clashes	Symm-Clashes
3	A	253	CYK	1	0
4	A	258	GOL	1	0

## 5.7 Other polymers [i](#)

There are no such residues in this entry.

## 5.8 Polymer linkage issues [i](#)

There are no chain breaks in this entry.

## 6 Fit of model and data [i](#)

### 6.1 Protein, DNA and RNA chains [i](#)

In the following table, the column labelled ‘#RSRZ> 2’ contains the number (and percentage) of RSRZ outliers, followed by percent RSRZ outliers for the chain as percentile scores relative to all X-ray entries and entries of similar resolution. The OWAB column contains the minimum, median, 95<sup>th</sup> percentile and maximum values of the occupancy-weighted average B-factor per residue. The column labelled ‘Q< 0.9’ lists the number of (and percentage) of residues with an average occupancy less than 0.9.

Mol	Chain	Analysed	<RSRZ>	#RSRZ>2	OWAB(Å <sup>2</sup> )	Q<0.9
1	A	250/254 (98%)	0.16	14 (5%) <b>24</b> <b>21</b>	9, 16, 31, 36	1 (0%)

All (14) RSRZ outliers are listed below:

Mol	Chain	Res	Type	RSRZ
1	A	26	THR	9.8
1	A	68	PHE	7.1
1	A	24	ALA	7.0
1	A	66	GLY	5.2
1	A	133	HIS	4.9
1	A	1[B]	MET	4.5
1	A	25	LEU	3.2
1	A	244	ARG	2.9
1	A	243[A]	CYS	2.6
1	A	28	GLY	2.6
1	A	135	GLU	2.5
1	A	211	GLU	2.3
1	A	228	LYS	2.2
1	A	23	SER	2.2

### 6.2 Non-standard residues in protein, DNA, RNA chains [i](#)

There are no non-standard protein/DNA/RNA residues in this entry.

### 6.3 Carbohydrates [i](#)

There are no monosaccharides in this entry.

## 6.4 Ligands [i](#)

In the following table, the Atoms column lists the number of modelled atoms in the group and the number defined in the chemical component dictionary. The B-factors column lists the minimum, median, 95<sup>th</sup> percentile and maximum values of B factors of atoms in the group. The column labelled 'Q<0.9' lists the number of atoms with occupancy less than 0.9.

Mol	Type	Chain	Res	Atoms	RSCC	RSR	B-factors(Å <sup>2</sup> )	Q<0.9
4	GOL	A	256	6/6	0.23	0.52	112,113,113,114	0
4	GOL	A	257	6/6	0.36	1.25	172,172,173,173	0
4	GOL	A	255	6/6	0.41	0.58	83,87,89,89	0
4	GOL	A	258	6/6	0.47	0.53	137,137,137,138	0
4	GOL	A	259	6/6	0.75	0.51	65,73,74,75	0
4	GOL	A	254	6/6	0.86	0.15	30,36,39,44	0
3	CYK	A	253	15/15	0.92	0.12	16,21,32,34	15
2	ZN	A	252	1/1	1.00	0.10	12,12,12,12	1
2	ZN	A	251	1/1	1.00	0.10	10,10,10,10	1

## 6.5 Other polymers [i](#)

There are no such residues in this entry.