



Full wwPDB X-ray Structure Validation Report ⓘ

Feb 17, 2024 – 09:07 PM EST

PDB ID : 4DI5
Title : Co-crystal structure of WT 5-epi-Aristolochene synthase from *Nicotiana tobaccum* with geranine
Authors : Noel, J.P.; Starks, C.; Crenshaw, C.M.
Deposited on : 2012-01-30
Resolution : 2.30 Å (reported)

This is a Full wwPDB X-ray Structure Validation Report for a publicly released PDB entry.

We welcome your comments at validation@mail.wwpdb.org

A user guide is available at

<https://www.wwpdb.org/validation/2017/XrayValidationReportHelp>

with specific help available everywhere you see the ⓘ symbol.

The types of validation reports are described at

<http://www.wwpdb.org/validation/2017/FAQs#types>.

The following versions of software and data (see [references ⓘ](#)) were used in the production of this report:

MolProbity : 4.02b-467
Mogul : 1.8.5 (274361), CSD as541be (2020)
Xtriage (Phenix) : 1.13
EDS : 2.36
Percentile statistics : 20191225.v01 (using entries in the PDB archive December 25th 2019)
Refmac : 5.8.0158
CCP4 : 7.0.044 (Gargrove)
Ideal geometry (proteins) : Engh & Huber (2001)
Ideal geometry (DNA, RNA) : Parkinson et al. (1996)
Validation Pipeline (wwPDB-VP) : 2.36

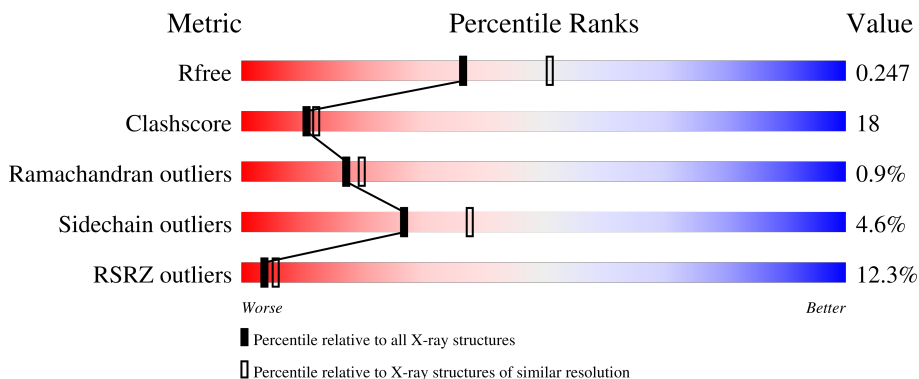
1 Overall quality at a glance

The following experimental techniques were used to determine the structure:

X-RAY DIFFRACTION

The reported resolution of this entry is 2.30 Å.

Percentile scores (ranging between 0-100) for global validation metrics of the entry are shown in the following graphic. The table shows the number of entries on which the scores are based.



Metric	Whole archive (#Entries)	Similar resolution (#Entries, resolution range(Å))
R_{free}	130704	5042 (2.30-2.30)
Clashscore	141614	5643 (2.30-2.30)
Ramachandran outliers	138981	5575 (2.30-2.30)
Sidechain outliers	138945	5575 (2.30-2.30)
RSRZ outliers	127900	4938 (2.30-2.30)

The table below summarises the geometric issues observed across the polymeric chains and their fit to the electron density. The red, orange, yellow and green segments of the lower bar indicate the fraction of residues that contain outliers for ≥ 3 , 2, 1 and 0 types of geometric quality criteria respectively. A grey segment represents the fraction of residues that are not modelled. The numeric value for each fraction is indicated below the corresponding segment, with a dot representing fractions $\leq 5\%$. The upper red bar (where present) indicates the fraction of residues that have poor fit to the electron density. The numeric value is given above the bar.

Mol	Chain	Length	Quality of chain
1	A	535	

The following table lists non-polymeric compounds, carbohydrate monomers and non-standard residues in protein, DNA, RNA chains that are outliers for geometric or electron-density-fit criteria:

Mol	Type	Chain	Res	Chirality	Geometry	Clashes	Electron density
3	1GA	A	603	-	-	X	-

Continued on next page...

Continued from previous page...

Mol	Type	Chain	Res	Chirality	Geometry	Clashes	Electron density
5	DPO	A	605	-	-	X	-

2 Entry composition [i](#)

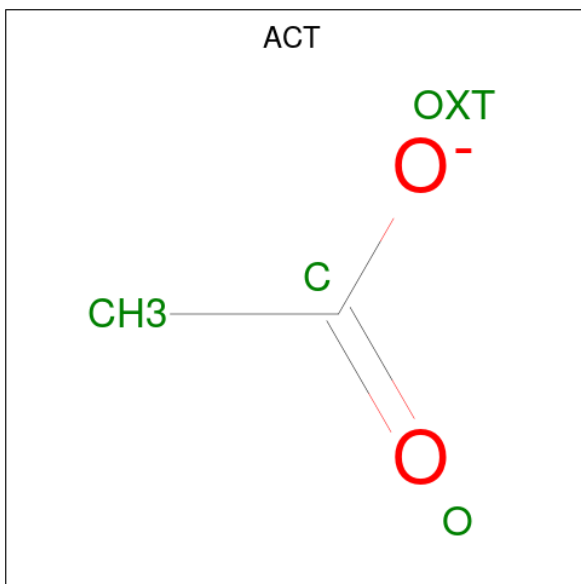
There are 6 unique types of molecules in this entry. The entry contains 4705 atoms, of which 6 are hydrogens and 0 are deuteriums.

In the tables below, the ZeroOcc column contains the number of atoms modelled with zero occupancy, the AltConf column contains the number of residues with at least one atom in alternate conformation and the Trace column contains the number of residues modelled with at most 2 atoms.

- Molecule 1 is a protein called 5-epi-aristolochene synthase.

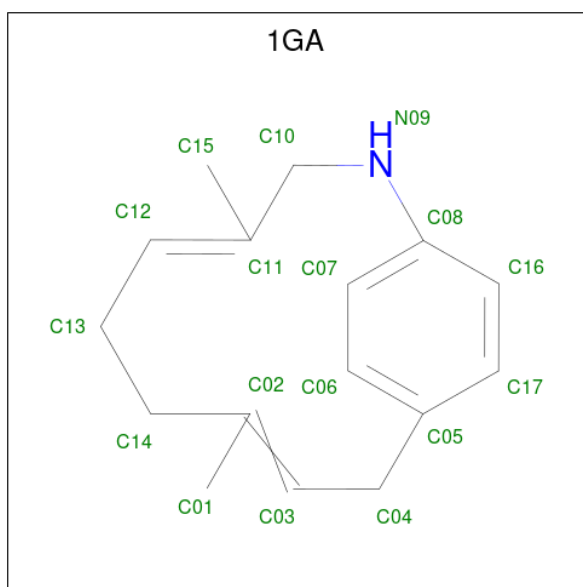
Mol	Chain	Residues	Atoms					ZeroOcc	AltConf	Trace
			Total	C	N	O	S			
1	A	535	4440	2832	738	851	19	0	11	0

- Molecule 2 is ACETATE ION (three-letter code: ACT) (formula: C₂H₃O₂).



Mol	Chain	Residues	Atoms				ZeroOcc	AltConf
			Total	C	H	O		
2	A	1	7	2	3	2	0	0
2	A	1	7	2	3	2	0	0

- Molecule 3 is Geraniline (three-letter code: 1GA) (formula: C₁₆H₂₁N).

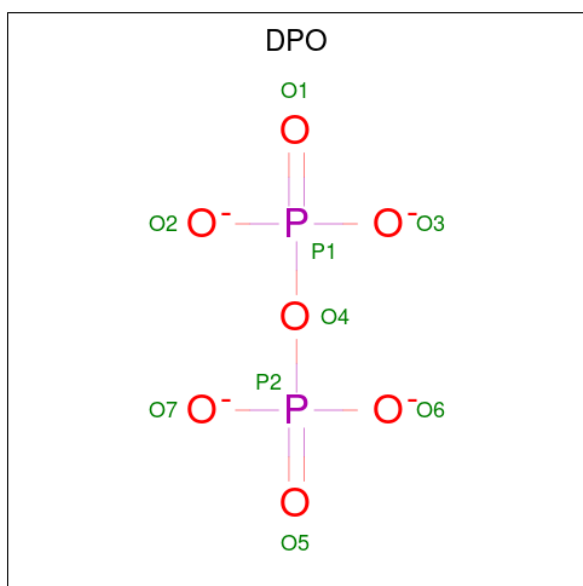


Mol	Chain	Residues	Atoms	ZeroOcc	AltConf
3	A	1	Total C N 17 16 1	0	0

- Molecule 4 is MAGNESIUM ION (three-letter code: MG) (formula: Mg).

Mol	Chain	Residues	Atoms	ZeroOcc	AltConf
4	A	2	Total Mg 2 2	0	0

- Molecule 5 is DIPHOSPHATE (three-letter code: DPO) (formula: O₇P₂).



Mol	Chain	Residues	Atoms			ZeroOcc	AltConf
5	A	1	Total	O	P	0	0
			9	7	2		

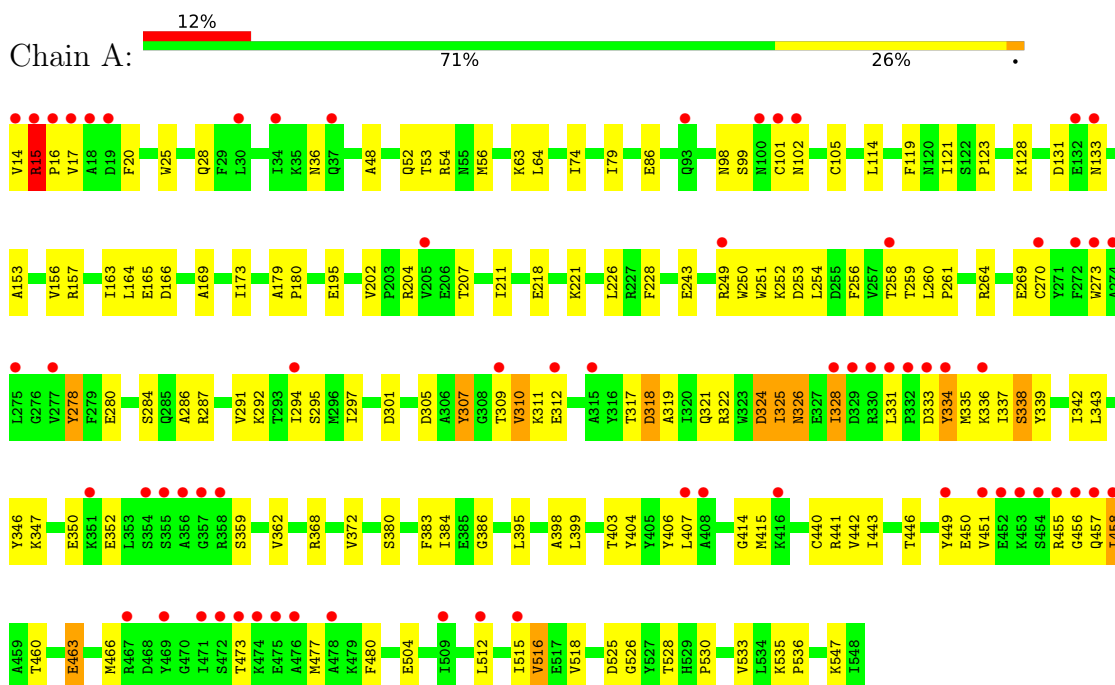
- Molecule 6 is water.

Mol	Chain	Residues	Atoms		ZeroOcc	AltConf
6	A	223	Total	O	0	0
			223	223		

3 Residue-property plots

These plots are drawn for all protein, RNA, DNA and oligosaccharide chains in the entry. The first graphic for a chain summarises the proportions of the various outlier classes displayed in the second graphic. The second graphic shows the sequence view annotated by issues in geometry and electron density. Residues are color-coded according to the number of geometric quality criteria for which they contain at least one outlier: green = 0, yellow = 1, orange = 2 and red = 3 or more. A red dot above a residue indicates a poor fit to the electron density ($RSRZ > 2$). Stretches of 2 or more consecutive residues without any outlier are shown as a green connector. Residues present in the sample, but not in the model, are shown in grey.

- Molecule 1: 5-epi-aristolochene synthase



4 Data and refinement statistics i

Property	Value	Source
Space group	P 41 21 2	Depositor
Cell constants a, b, c, α , β , γ	126.45Å 126.45Å 122.78Å 90.00° 90.00° 90.00°	Depositor
Resolution (Å)	34.36 – 2.30 34.36 – 2.30	Depositor EDS
% Data completeness (in resolution range)	84.9 (34.36-2.30) 84.8 (34.36-2.30)	Depositor EDS
R_{merge}	(Not available)	Depositor
R_{sym}	0.08	Depositor
$\langle I/\sigma(I) \rangle$ ¹	1.58 (at 2.29Å)	Xtriage
Refinement program	PHENIX 1.7.3_928	Depositor
R, R_{free}	0.203 , 0.246 0.201 , 0.247	Depositor DCC
R_{free} test set	1121 reflections (2.95%)	wwPDB-VP
Wilson B-factor (Å ²)	36.6	Xtriage
Anisotropy	0.782	Xtriage
Bulk solvent k_{sol} (e/Å ³), B_{sol} (Å ²)	0.35 , 49.3	EDS
L-test for twinning ²	$\langle L \rangle = 0.50$, $\langle L^2 \rangle = 0.34$	Xtriage
Estimated twinning fraction	0.018 for -h,-l,-k 0.000 for l,-k,h	Xtriage
F_o, F_c correlation	0.95	EDS
Total number of atoms	4705	wwPDB-VP
Average B, all atoms (Å ²)	51.0	wwPDB-VP

Xtriage's analysis on translational NCS is as follows: *The largest off-origin peak in the Patterson function is 3.34% of the height of the origin peak. No significant pseudotranslation is detected.*

¹Intensities estimated from amplitudes.

²Theoretical values of $\langle |L| \rangle$, $\langle L^2 \rangle$ for acentric reflections are 0.5, 0.333 respectively for untwinned datasets, and 0.375, 0.2 for perfectly twinned datasets.

5 Model quality [i](#)

5.1 Standard geometry [i](#)

Bond lengths and bond angles in the following residue types are not validated in this section: ACT, 1GA, MG, DPO

The Z score for a bond length (or angle) is the number of standard deviations the observed value is removed from the expected value. A bond length (or angle) with $|Z| > 5$ is considered an outlier worth inspection. RMSZ is the root-mean-square of all Z scores of the bond lengths (or angles).

Mol	Chain	Bond lengths		Bond angles	
		RMSZ	# Z >5	RMSZ	# Z >5
1	A	0.40	0/4534	0.54	0/6144

There are no bond length outliers.

There are no bond angle outliers.

There are no chirality outliers.

There are no planarity outliers.

5.2 Too-close contacts [i](#)

In the following table, the Non-H and H(model) columns list the number of non-hydrogen atoms and hydrogen atoms in the chain respectively. The H(added) column lists the number of hydrogen atoms added and optimized by MolProbity. The Clashes column lists the number of clashes within the asymmetric unit, whereas Symm-Clashes lists symmetry-related clashes.

Mol	Chain	Non-H	H(model)	H(added)	Clashes	Symm-Clashes
1	A	4440	0	4375	158	0
2	A	8	6	6	1	0
3	A	17	0	21	10	0
4	A	2	0	0	0	0
5	A	9	0	0	3	0
6	A	223	0	0	12	0
All	All	4699	6	4402	163	0

The all-atom clashscore is defined as the number of clashes found per 1000 atoms (including hydrogen atoms). The all-atom clashscore for this structure is 18.

All (163) close contacts within the same asymmetric unit are listed below, sorted by their clash magnitude.

Atom-1	Atom-2	Interatomic distance (Å)	Clash overlap (Å)
1:A:325:ILE:O	1:A:328:ILE:HG12	1.45	1.15
1:A:334:TYR:CE2	1:A:335:MET:HG3	1.96	0.99
1:A:333:ASP:HA	1:A:336:LYS:HD2	1.41	0.99
1:A:463:GLU:HA	1:A:466:MET:HE3	1.52	0.92
1:A:294:ILE:HG23	3:A:603:1GA:H13	1.49	0.90
3:A:603:1GA:H7	5:A:605:DPO:O2	1.72	0.89
1:A:325:ILE:HD13	1:A:325:ILE:N	1.86	0.88
1:A:443:ILE:HD12	1:A:516[B]:VAL:CG1	2.05	0.87
1:A:463:GLU:HA	1:A:466:MET:CE	2.06	0.86
1:A:15:ARG:H	1:A:16:PRO:HD3	1.42	0.84
1:A:407:LEU:HD11	3:A:603:1GA:C15	2.09	0.83
1:A:259:THR:CG2	1:A:337:ILE:HD13	2.12	0.79
1:A:307:TYR:CD2	1:A:334:TYR:HE1	2.02	0.78
1:A:535:LYS:HB3	1:A:536:PRO:HD3	1.66	0.77
1:A:386:GLY:HA2	1:A:458:ILE:CD1	2.15	0.76
1:A:294:ILE:CG2	3:A:603:1GA:H13	2.17	0.75
1:A:443:ILE:HD12	1:A:516[B]:VAL:HG12	1.69	0.74
1:A:221[A]:LYS:HD2	1:A:226:LEU:HD22	1.68	0.73
1:A:249[B]:ARG:HH12	1:A:252:LYS:HD3	1.53	0.72
1:A:443:ILE:HD12	1:A:516[B]:VAL:HG11	1.70	0.72
1:A:407:LEU:HD11	3:A:603:1GA:H22	1.72	0.71
1:A:443:ILE:CD1	1:A:516[B]:VAL:HG12	2.19	0.71
1:A:443:ILE:HD12	1:A:516[A]:VAL:HG13	1.72	0.71
1:A:249[B]:ARG:NH1	1:A:252:LYS:HD3	2.06	0.70
1:A:311:LYS:N	1:A:311:LYS:HD2	2.06	0.70
1:A:259:THR:HG22	1:A:260:LEU:HG	1.74	0.70
1:A:249[B]:ARG:HG3	1:A:249[B]:ARG:HH11	1.57	0.69
1:A:386:GLY:HA2	1:A:458:ILE:HD11	1.73	0.69
1:A:307:TYR:HD2	1:A:334:TYR:HE1	1.38	0.68
1:A:64:LEU:HD23	1:A:101:CYS:HB3	1.73	0.68
1:A:20:PHE:CD2	1:A:264:ARG:HG3	2.29	0.67
1:A:105:CYS:SG	6:A:795:HOH:O	2.52	0.67
1:A:334:TYR:CE2	1:A:335:MET:CG	2.75	0.67
1:A:218[A]:GLU:HB3	1:A:221[A]:LYS:HB3	1.78	0.66
1:A:443:ILE:HD12	1:A:516[A]:VAL:CG1	2.24	0.66
1:A:446:THR:HG23	1:A:477:MET:SD	2.38	0.64
1:A:15:ARG:N	1:A:16:PRO:CD	2.61	0.63
1:A:74:ILE:HG23	1:A:79:ILE:HG13	1.80	0.63
1:A:15:ARG:N	1:A:16:PRO:HD3	2.11	0.63
1:A:307:TYR:CD2	1:A:334:TYR:CE1	2.86	0.62
1:A:449:TYR:HE2	1:A:473:THR:HG23	1.64	0.61
1:A:157[A]:ARG:NH1	6:A:821:HOH:O	2.33	0.61

Continued on next page...

Continued from previous page...

Atom-1	Atom-2	Interatomic distance (Å)	Clash overlap (Å)
1:A:404:TYR:OH	1:A:516[B]:VAL:HG23	2.00	0.61
1:A:407:LEU:HD11	3:A:603:1GA:H23	1.82	0.61
1:A:259:THR:HG21	1:A:337:ILE:HD13	1.82	0.61
1:A:449:TYR:CE2	1:A:473:THR:HG23	2.35	0.60
1:A:473:THR:O	1:A:477:MET:HG2	2.01	0.60
1:A:334:TYR:HE2	1:A:335:MET:HG3	1.61	0.60
1:A:407:LEU:CD1	3:A:603:1GA:H22	2.32	0.60
1:A:324[A]:ASP:OD2	1:A:326:ASN:HB2	2.01	0.59
1:A:202:VAL:HG23	1:A:518:VAL:HG21	1.85	0.59
1:A:14:VAL:HG12	1:A:14:VAL:O	2.02	0.59
1:A:259:THR:HG23	1:A:337:ILE:HD13	1.83	0.59
1:A:334:TYR:CD2	1:A:335:MET:HG3	2.35	0.59
1:A:15:ARG:H	1:A:16:PRO:CD	2.15	0.58
1:A:251:TRP:O	6:A:802:HOH:O	2.16	0.58
1:A:307:TYR:CE2	1:A:334:TYR:CE1	2.90	0.58
1:A:14:VAL:N	1:A:307:TYR:O	2.35	0.58
1:A:131:ASP:OD1	1:A:133:ASN:N	2.36	0.58
1:A:48:ALA:O	1:A:52:GLN:HG3	2.04	0.57
1:A:398:ALA:HB1	1:A:441:ARG:HD3	1.87	0.57
1:A:249[B]:ARG:NH1	1:A:249[B]:ARG:HG3	2.19	0.57
1:A:157[B]:ARG:HD2	1:A:164:LEU:CB	2.35	0.56
1:A:449:TYR:HE2	1:A:473:THR:CG2	2.18	0.56
1:A:258:THR:O	1:A:261:PRO:HD3	2.06	0.56
1:A:407:LEU:CD1	3:A:603:1GA:C15	2.84	0.56
1:A:443:ILE:CD1	1:A:516[A]:VAL:HG13	2.35	0.56
1:A:286:ALA:HA	1:A:414:GLY:HA3	1.87	0.55
1:A:309:THR:OG1	1:A:312:GLU:HG3	2.07	0.54
5:A:605:DPO:P1	6:A:922:HOH:O	2.66	0.54
1:A:269:GLU:N	1:A:269:GLU:OE1	2.37	0.54
1:A:457:GLN:HG3	1:A:460:THR:HG23	1.90	0.54
1:A:334:TYR:CD2	1:A:335:MET:N	2.76	0.54
1:A:443:ILE:CD1	1:A:516[B]:VAL:CG1	2.81	0.53
1:A:20:PHE:CE2	1:A:264:ARG:HG3	2.43	0.53
1:A:287:ARG:O	1:A:291:VAL:HG12	2.07	0.53
1:A:339:TYR:CE2	1:A:343:LEU:HD22	2.42	0.53
1:A:346:TYR:O	1:A:350:GLU:HG3	2.08	0.53
1:A:331:LEU:O	1:A:336:LYS:HE2	2.09	0.53
1:A:301:ASP:OD2	6:A:922:HOH:O	2.18	0.53
1:A:280:GLU:HG2	6:A:873:HOH:O	2.08	0.52
1:A:317:THR:O	1:A:321:GLN:HG2	2.09	0.52
1:A:256:PHE:CD1	1:A:260:LEU:HD12	2.44	0.52

Continued on next page...

Continued from previous page...

Atom-1	Atom-2	Interatomic distance (Å)	Clash overlap (Å)
1:A:157[B]:ARG:HD2	1:A:164:LEU:HB3	1.90	0.52
1:A:123:PRO:HB2	1:A:163:ILE:CG2	2.39	0.52
1:A:525:ASP:OD2	1:A:528:THR:HB	2.10	0.52
1:A:270:CYS:SG	1:A:294:ILE:HG22	2.50	0.51
1:A:123:PRO:HB2	1:A:163:ILE:HG21	1.94	0.50
1:A:102:ASN:HB3	1:A:128:LYS:NZ	2.27	0.50
1:A:259:THR:HG21	1:A:337:ILE:HG21	1.94	0.50
1:A:460:THR:OG1	1:A:463:GLU:HB2	2.11	0.50
1:A:99:SER:N	6:A:898:HOH:O	2.44	0.50
1:A:179:ALA:N	1:A:180:PRO:HD2	2.27	0.50
1:A:53:THR:HA	1:A:56:MET:CE	2.41	0.50
1:A:195[A]:GLU:HG3	6:A:858:HOH:O	2.12	0.50
1:A:153:ALA:O	1:A:156:VAL:HG22	2.12	0.49
1:A:17:VAL:HG23	1:A:17:VAL:O	2.12	0.49
1:A:157[B]:ARG:NH2	1:A:165:GLU:OE1	2.45	0.49
1:A:463:GLU:HA	1:A:466:MET:HE2	1.93	0.49
1:A:547:LYS:HG3	6:A:915:HOH:O	2.11	0.49
1:A:415:MET:HE1	1:A:504:GLU:HG2	1.94	0.49
1:A:310:VAL:HG11	1:A:384:ILE:HG13	1.94	0.49
1:A:442:VAL:HG11	1:A:480:PHE:O	2.12	0.49
1:A:310:VAL:CG1	1:A:384:ILE:HG13	2.42	0.48
1:A:292:LYS:NZ	6:A:773:HOH:O	2.45	0.48
1:A:403:THR:O	1:A:406:TYR:HB3	2.14	0.48
1:A:457:GLN:HG2	1:A:460:THR:HG22	1.96	0.48
1:A:250:TRP:CZ2	1:A:292:LYS:HG2	2.48	0.48
1:A:157[A]:ARG:HH21	2:A:601:ACT:H1	1.79	0.47
1:A:311:LYS:N	1:A:311:LYS:CD	2.78	0.47
1:A:250:TRP:CE2	1:A:292:LYS:HG2	2.50	0.46
1:A:25:TRP:O	1:A:28:GLN:HG2	2.16	0.46
1:A:450:GLU:HA	1:A:450:GLU:OE1	2.15	0.46
1:A:14:VAL:HG13	1:A:307:TYR:OH	2.16	0.46
1:A:443:ILE:HD13	1:A:516[B]:VAL:HG12	1.94	0.46
1:A:451:VAL:O	1:A:455:ARG:HG3	2.15	0.46
1:A:53:THR:HA	1:A:56:MET:HE3	1.98	0.45
1:A:319:ALA:HB1	1:A:339:TYR:CE1	2.51	0.45
1:A:305:ASP:O	1:A:305:ASP:OD1	2.35	0.45
1:A:251:TRP:CZ3	1:A:295:SER:HB3	2.51	0.45
1:A:386:GLY:HA2	1:A:458:ILE:HD12	1.94	0.45
1:A:15:ARG:NH2	1:A:16:PRO:HG3	2.31	0.45
1:A:383:PHE:HE1	1:A:456:GLY:O	2.00	0.45
1:A:368:ARG:O	1:A:372:VAL:HG23	2.17	0.45

Continued on next page...

Continued from previous page...

Atom-1	Atom-2	Interatomic distance (Å)	Clash overlap (Å)
1:A:359:SER:O	1:A:362:VAL:HG23	2.17	0.45
1:A:54:ARG:HD3	1:A:86:GLU:OE2	2.17	0.44
1:A:512:LEU:HA	1:A:515:ILE:HD12	2.00	0.44
1:A:114:LEU:HB3	1:A:119:PHE:HB2	1.99	0.44
1:A:179:ALA:N	1:A:180:PRO:CD	2.81	0.43
1:A:339:TYR:CE2	1:A:343:LEU:CD2	3.01	0.43
1:A:386:GLY:CA	1:A:458:ILE:HD12	2.48	0.43
1:A:286:ALA:CA	1:A:414:GLY:HA3	2.48	0.43
1:A:404:TYR:CE2	1:A:440:CYS:HB2	2.54	0.43
1:A:386:GLY:CA	1:A:458:ILE:CD1	2.94	0.43
1:A:278:TYR:O	1:A:287:ARG:HD3	2.19	0.43
1:A:218[B]:GLU:O	1:A:221[B]:LYS:HB3	2.19	0.42
1:A:395:LEU:O	1:A:399:LEU:HG	2.19	0.42
1:A:318:ASP:O	1:A:322:ARG:HG3	2.19	0.42
1:A:533:VAL:O	1:A:536:PRO:HD2	2.20	0.42
1:A:243:GLU:OE2	1:A:284:SER:OG	2.24	0.42
1:A:338:SER:O	1:A:342:ILE:HG13	2.19	0.42
1:A:457:GLN:CG	1:A:460:THR:CG2	2.97	0.42
1:A:157[B]:ARG:HD2	1:A:164:LEU:HB2	2.01	0.42
1:A:207:THR:O	1:A:211:ILE:HG13	2.20	0.42
1:A:442:VAL:HG13	1:A:480:PHE:HB3	2.02	0.42
3:A:603:1GA:H18	3:A:603:1GA:H21	1.87	0.42
5:A:605:DPO:O1	6:A:922:HOH:O	2.21	0.41
1:A:14:VAL:O	1:A:14:VAL:CG1	2.66	0.41
1:A:297:ILE:HD12	1:A:297:ILE:HA	1.90	0.41
1:A:325:ILE:HG23	1:A:343:LEU:HD23	2.03	0.41
1:A:352:GLU:HB3	6:A:868:HOH:O	2.21	0.41
3:A:603:1GA:H17	3:A:603:1GA:H1	1.93	0.41
1:A:131:ASP:OD1	1:A:131:ASP:C	2.59	0.41
1:A:278:TYR:CD1	1:A:278:TYR:N	2.87	0.41
1:A:102:ASN:HB3	1:A:128:LYS:HZ2	1.86	0.40
1:A:169:ALA:O	1:A:173:ILE:HG22	2.22	0.40
1:A:259:THR:C	1:A:261:PRO:HD3	2.42	0.40
1:A:535:LYS:HB3	1:A:536:PRO:CD	2.45	0.40
1:A:526:GLY:O	1:A:530:PRO:HA	2.21	0.40

There are no symmetry-related clashes.

5.3 Torsion angles [i](#)

5.3.1 Protein backbone [i](#)

In the following table, the Percentiles column shows the percent Ramachandran outliers of the chain as a percentile score with respect to all X-ray entries followed by that with respect to entries of similar resolution.

The Analysed column shows the number of residues for which the backbone conformation was analysed, and the total number of residues.

Mol	Chain	Analysed	Favoured	Allowed	Outliers	Percentiles
1	A	544/535 (102%)	521 (96%)	18 (3%)	5 (1%)	17 20

All (5) Ramachandran outliers are listed below:

Mol	Chain	Res	Type
1	A	98	ASN
1	A	326	ASN
1	A	253	ASP
1	A	307	TYR
1	A	15	ARG

5.3.2 Protein sidechains [i](#)

In the following table, the Percentiles column shows the percent sidechain outliers of the chain as a percentile score with respect to all X-ray entries followed by that with respect to entries of similar resolution.

The Analysed column shows the number of residues for which the sidechain conformation was analysed, and the total number of residues.

Mol	Chain	Analysed	Rotameric	Outliers	Percentiles
1	A	491/480 (102%)	467 (95%)	24 (5%)	25 35

All (24) residues with a non-rotameric sidechain are listed below:

Mol	Chain	Res	Type
1	A	15	ARG
1	A	36	ASN
1	A	63	LYS
1	A	121	ILE
1	A	166	ASP
1	A	204	ARG

Continued on next page...

Continued from previous page...

Mol	Chain	Res	Type
1	A	228	PHE
1	A	254	LEU
1	A	273	TRP
1	A	278	TYR
1	A	310	VAL
1	A	318	ASP
1	A	324[A]	ASP
1	A	324[B]	ASP
1	A	325	ILE
1	A	328	ILE
1	A	334	TYR
1	A	338	SER
1	A	347	LYS
1	A	380	SER
1	A	458	ILE
1	A	463	GLU
1	A	516[A]	VAL
1	A	516[B]	VAL

Sometimes sidechains can be flipped to improve hydrogen bonding and reduce clashes. There are no such sidechains identified.

5.3.3 RNA [i](#)

There are no RNA molecules in this entry.

5.4 Non-standard residues in protein, DNA, RNA chains [i](#)

There are no non-standard protein/DNA/RNA residues in this entry.

5.5 Carbohydrates [i](#)

There are no monosaccharides in this entry.

5.6 Ligand geometry [i](#)

Of 6 ligands modelled in this entry, 2 are monoatomic - leaving 4 for Mogul analysis.

In the following table, the Counts columns list the number of bonds (or angles) for which Mogul statistics could be retrieved, the number of bonds (or angles) that are observed in the model and

the number of bonds (or angles) that are defined in the Chemical Component Dictionary. The Link column lists molecule types, if any, to which the group is linked. The Z score for a bond length (or angle) is the number of standard deviations the observed value is removed from the expected value. A bond length (or angle) with $|Z| > 2$ is considered an outlier worth inspection. RMSZ is the root-mean-square of all Z scores of the bond lengths (or angles).

Mol	Type	Chain	Res	Link	Bond lengths			Bond angles		
					Counts	RMSZ	# Z > 2	Counts	RMSZ	# Z > 2
2	ACT	A	601	-	3,3,3	0.78	0	3,3,3	1.34	0
5	DPO	A	605	4	6,8,8	0.74	0	13,13,13	1.00	0
3	1GA	A	603	-	17,18,18	1.11	2 (11%)	21,23,23	2.43	6 (28%)
2	ACT	A	602	-	3,3,3	0.69	0	3,3,3	1.47	0

In the following table, the Chirals column lists the number of chiral outliers, the number of chiral centers analysed, the number of these observed in the model and the number defined in the Chemical Component Dictionary. Similar counts are reported in the Torsion and Rings columns. '-' means no outliers of that kind were identified.

Mol	Type	Chain	Res	Link	Chirals	Torsions	Rings
5	DPO	A	605	4	-	0/6/6/6	-
3	1GA	A	603	-	-	10/16/16/16	0/1/2/2

All (2) bond length outliers are listed below:

Mol	Chain	Res	Type	Atoms	Z	Observed(Å)	Ideal(Å)
3	A	603	1GA	C10-N09	-3.33	1.40	1.45
3	A	603	1GA	C04-C05	-2.67	1.47	1.52

All (6) bond angle outliers are listed below:

Mol	Chain	Res	Type	Atoms	Z	Observed(°)	Ideal(°)
3	A	603	1GA	C10-N09-C08	7.16	136.61	122.49
3	A	603	1GA	C04-C03-C02	-4.66	120.01	127.24
3	A	603	1GA	C13-C12-C11	-3.92	118.22	127.66
3	A	603	1GA	C05-C04-C03	-2.74	107.71	114.35
3	A	603	1GA	C01-C02-C14	2.22	119.01	115.27
3	A	603	1GA	C15-C11-C12	-2.02	118.49	123.68

There are no chirality outliers.

All (10) torsion outliers are listed below:

Mol	Chain	Res	Type	Atoms
3	A	603	1GA	C14-C02-C03-C04

Continued on next page...

Continued from previous page...

Mol	Chain	Res	Type	Atoms
3	A	603	1GA	C03-C02-C14-C13
3	A	603	1GA	C11-C10-N09-C08
3	A	603	1GA	N09-C10-C11-C15
3	A	603	1GA	C01-C02-C03-C04
3	A	603	1GA	C07-C08-N09-C10
3	A	603	1GA	C16-C08-N09-C10
3	A	603	1GA	C01-C02-C14-C13
3	A	603	1GA	C02-C03-C04-C05
3	A	603	1GA	C11-C12-C13-C14

There are no ring outliers.

3 monomers are involved in 13 short contacts:

Mol	Chain	Res	Type	Clashes	Symm-Clashes
2	A	601	ACT	1	0
5	A	605	DPO	3	0
3	A	603	1GA	10	0

5.7 Other polymers [i](#)

There are no such residues in this entry.

5.8 Polymer linkage issues [i](#)

There are no chain breaks in this entry.

6 Fit of model and data [i](#)

6.1 Protein, DNA and RNA chains [i](#)

In the following table, the column labelled ‘#RSRZ> 2’ contains the number (and percentage) of RSRZ outliers, followed by percent RSRZ outliers for the chain as percentile scores relative to all X-ray entries and entries of similar resolution. The OWAB column contains the minimum, median, 95th percentile and maximum values of the occupancy-weighted average B-factor per residue. The column labelled ‘Q< 0.9’ lists the number of (and percentage) of residues with an average occupancy less than 0.9.

Mol	Chain	Analysed	<RSRZ>	#RSRZ>2	OWAB(Å ²)	Q<0.9
1	A	535/535 (100%)	0.31	66 (12%) 4 6	28, 47, 84, 123	1 (0%)

All (66) RSRZ outliers are listed below:

Mol	Chain	Res	Type	RSRZ
1	A	17	VAL	7.0
1	A	100	ASN	6.3
1	A	14	VAL	6.1
1	A	449	TYR	4.9
1	A	453	LYS	4.8
1	A	471	ILE	4.5
1	A	18	ALA	4.4
1	A	458	ILE	4.4
1	A	37	GLN	4.2
1	A	330	ARG	4.2
1	A	273	TRP	4.1
1	A	333	ASP	4.0
1	A	454	SER	3.9
1	A	132[A]	GLU	3.8
1	A	456	GLY	3.7
1	A	270	CYS	3.5
1	A	258	THR	3.5
1	A	356	ALA	3.5
1	A	334	TYR	3.4
1	A	331	LEU	3.4
1	A	357	GLY	3.4
1	A	451	VAL	3.3
1	A	294	ILE	3.2
1	A	101	CYS	3.2
1	A	133	ASN	3.2
1	A	457	GLN	3.1
1	A	272	PHE	3.1

Continued on next page...

Continued from previous page...

Mol	Chain	Res	Type	RSRZ
1	A	474	LYS	3.0
1	A	15	ARG	3.0
1	A	512	LEU	2.9
1	A	93	GLN	2.8
1	A	473	THR	2.8
1	A	469	TYR	2.7
1	A	336	LYS	2.7
1	A	249[A]	ARG	2.7
1	A	16	PRO	2.6
1	A	355	SER	2.6
1	A	455	ARG	2.5
1	A	358	ARG	2.5
1	A	275	LEU	2.5
1	A	30	LEU	2.5
1	A	407	LEU	2.5
1	A	354	SER	2.4
1	A	274	ALA	2.4
1	A	351	LYS	2.3
1	A	332	PRO	2.3
1	A	328	ILE	2.3
1	A	476	ALA	2.3
1	A	315	ALA	2.3
1	A	472	SER	2.3
1	A	34	ILE	2.2
1	A	102	ASN	2.2
1	A	277	VAL	2.2
1	A	312	GLU	2.2
1	A	475	GLU	2.1
1	A	478	ALA	2.1
1	A	467	ARG	2.1
1	A	329	ASP	2.1
1	A	452	GLU	2.1
1	A	408	ALA	2.1
1	A	416	LYS	2.0
1	A	309	THR	2.0
1	A	19	ASP	2.0
1	A	205	VAL	2.0
1	A	515	ILE	2.0
1	A	509	ILE	2.0

6.2 Non-standard residues in protein, DNA, RNA chains [i](#)

There are no non-standard protein/DNA/RNA residues in this entry.

6.3 Carbohydrates [i](#)

There are no monosaccharides in this entry.

6.4 Ligands [i](#)

In the following table, the Atoms column lists the number of modelled atoms in the group and the number defined in the chemical component dictionary. The B-factors column lists the minimum, median, 95th percentile and maximum values of B factors of atoms in the group. The column labelled 'Q< 0.9' lists the number of atoms with occupancy less than 0.9.

Mol	Type	Chain	Res	Atoms	RSCC	RSR	B-factors(Å ²)	Q<0.9
5	DPO	A	605	9/9	0.83	0.28	60,66,80,86	9
4	MG	A	604	1/1	0.86	0.19	64,64,64,64	1
4	MG	A	606	1/1	0.88	0.19	76,76,76,76	0
2	ACT	A	602	4/4	0.92	0.16	43,52,59,60	0
2	ACT	A	601	4/4	0.93	0.11	40,48,61,61	0
3	1GA	A	603	17/17	0.94	0.50	35,40,48,50	17

6.5 Other polymers [i](#)

There are no such residues in this entry.