



Full wwPDB X-ray Structure Validation Report ⓘ

Aug 2, 2023 – 07:40 AM EDT

PDB ID : 1DJR
Title : HEAT-LABILE ENTEROTOXIN B-PENTAMER COMPLEXED WITH M-CARBOXYPHENYL-ALPHA-D-GALACTOSE
Authors : Minke, W.E.; Pickens, J.; Merritt, E.A.; Fan, E.; Verlinde, C.L.M.J.; Hol, W.G.J.
Deposited on : 1999-12-03
Resolution : 1.30 Å(reported)

This is a Full wwPDB X-ray Structure Validation Report for a publicly released PDB entry.

We welcome your comments at validation@mail.wwpdb.org

A user guide is available at

<https://www.wwpdb.org/validation/2017/XrayValidationReportHelp>

with specific help available everywhere you see the ⓘ symbol.

The types of validation reports are described at

<http://www.wwpdb.org/validation/2017/FAQs#types>.

The following versions of software and data (see [references ⓘ](#)) were used in the production of this report:

MolProbity : 4.02b-467
Mogul : 1.8.5 (274361), CSD as541be (2020)
Xtriage (Phenix) : 1.13
EDS : 2.34
Percentile statistics : 20191225.v01 (using entries in the PDB archive December 25th 2019)
Refmac : 5.8.0158
CCP4 : 7.0.044 (Gargrove)
Ideal geometry (proteins) : Engh & Huber (2001)
Ideal geometry (DNA, RNA) : Parkinson et al. (1996)
Validation Pipeline (wwPDB-VP) : 2.34

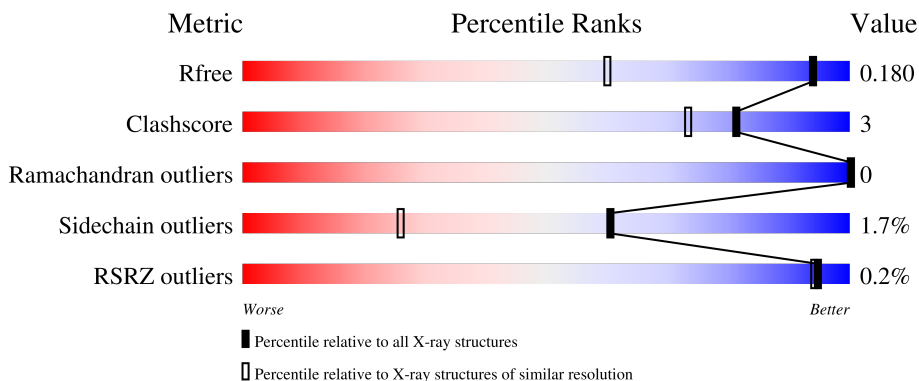
1 Overall quality at a glance

The following experimental techniques were used to determine the structure:

X-RAY DIFFRACTION

The reported resolution of this entry is 1.30 Å.

Percentile scores (ranging between 0-100) for global validation metrics of the entry are shown in the following graphic. The table shows the number of entries on which the scores are based.



Metric	Whole archive (#Entries)	Similar resolution (#Entries, resolution range(Å))
R_{free}	130704	1058 (1.30-1.30)
Clashscore	141614	1101 (1.30-1.30)
Ramachandran outliers	138981	1058 (1.30-1.30)
Sidechain outliers	138945	1058 (1.30-1.30)
RSRZ outliers	127900	1029 (1.30-1.30)

The table below summarises the geometric issues observed across the polymeric chains and their fit to the electron density. The red, orange, yellow and green segments of the lower bar indicate the fraction of residues that contain outliers for ≥ 3 , 2, 1 and 0 types of geometric quality criteria respectively. A grey segment represents the fraction of residues that are not modelled. The numeric value for each fraction is indicated below the corresponding segment, with a dot representing fractions $\leq 5\%$. The upper red bar (where present) indicates the fraction of residues that have poor fit to the electron density. The numeric value is given above the bar.

Mol	Chain	Length	Quality of chain
1	D	103	
1	E	103	
1	F	103	
1	G	103	
1	H	103	

2 Entry composition [i](#)

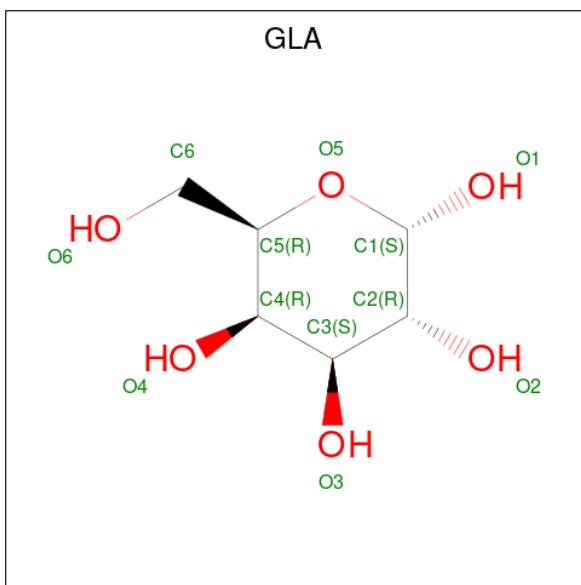
There are 5 unique types of molecules in this entry. The entry contains 5099 atoms, of which 0 are hydrogens and 0 are deuteriums.

In the tables below, the ZeroOcc column contains the number of atoms modelled with zero occupancy, the AltConf column contains the number of residues with at least one atom in alternate conformation and the Trace column contains the number of residues modelled with at most 2 atoms.

- Molecule 1 is a protein called HEAT-LABILE ENTEROTOXIN.

Mol	Chain	Residues	Atoms					ZeroOcc	AltConf	Trace
			Total	C	N	O	S			
1	D	103	Total 831	C 521	N 140	O 163	S 7	0	3	0
1	E	103	Total 835	C 525	N 139	O 165	S 6	0	4	0
1	F	103	Total 839	C 525	N 140	O 168	S 6	0	4	0
1	G	103	Total 836	C 526	N 139	O 164	S 7	0	4	0
1	H	103	Total 846	C 531	N 143	O 165	S 7	0	5	0

- Molecule 2 is alpha-D-galactopyranose (three-letter code: GLA) (formula: C₆H₁₂O₆).



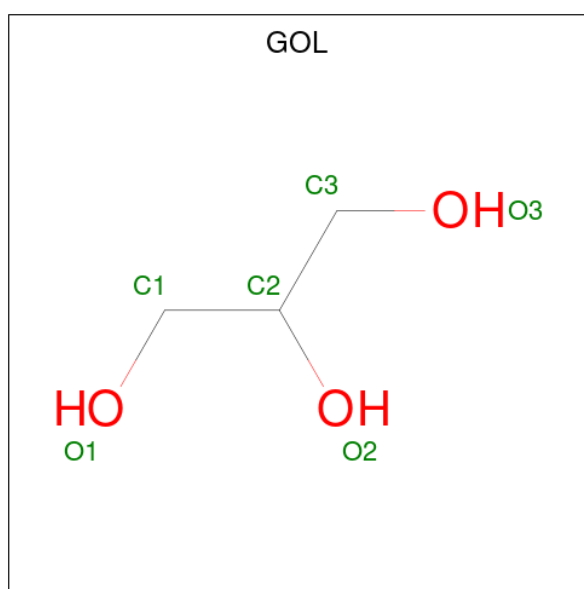
Mol	Chain	Residues	Atoms			ZeroOcc	AltConf
			Total	C	O		
2	D	1	Total 12	C 6	O 6	0	0

Continued on next page...

Continued from previous page...

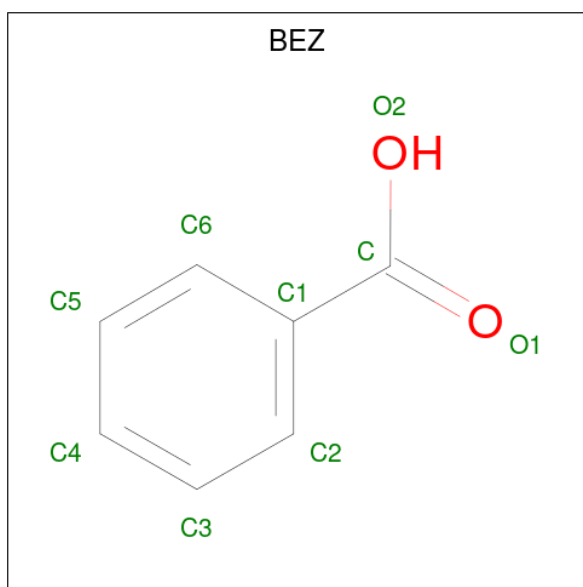
Mol	Chain	Residues	Atoms			ZeroOcc	AltConf
2	E	1	Total	C	O	0	0
			12	6	6		
2	F	1	Total	C	O	0	0
			12	6	6		
2	G	1	Total	C	O	0	0
			12	6	6		
2	H	1	Total	C	O	0	0
			12	6	6		

- Molecule 3 is GLYCEROL (three-letter code: GOL) (formula: C₃H₈O₃).



Mol	Chain	Residues	Atoms			ZeroOcc	AltConf
3	D	1	Total	C	O	0	0
			6	3	3		
3	G	1	Total	C	O	0	0
			6	3	3		
3	H	1	Total	C	O	0	0
			6	3	3		

- Molecule 4 is BENZOIC ACID (three-letter code: BEZ) (formula: C₇H₆O₂).



Mol	Chain	Residues	Atoms	ZeroOcc	AltConf
4	F	1	Total C O 9 7 2	0	0
4	G	1	Total C O 9 7 2	0	0
4	H	1	Total C O 9 7 2	0	0


- Molecule 5 is water.

Mol	Chain	Residues	Atoms	ZeroOcc	AltConf
5	D	154	Total O 154 154	0	0
5	E	163	Total O 163 163	0	0
5	F	150	Total O 150 150	0	0
5	G	173	Total O 173 173	0	0
5	H	167	Total O 167 167	0	0

3 Residue-property plots [i](#)


These plots are drawn for all protein, RNA, DNA and oligosaccharide chains in the entry. The first graphic for a chain summarises the proportions of the various outlier classes displayed in the second graphic. The second graphic shows the sequence view annotated by issues in geometry and electron density. Residues are color-coded according to the number of geometric quality criteria for which they contain at least one outlier: green = 0, yellow = 1, orange = 2 and red = 3 or more. A red dot above a residue indicates a poor fit to the electron density ($RSRZ > 2$). Stretches of 2 or more consecutive residues without any outlier are shown as a green connector. Residues present in the sample, but not in the model, are shown in grey.

- Molecule 1: HEAT-LABILE ENTEROTOXIN

Chain D: 




- Molecule 1: HEAT-LABILE ENTEROTOXIN

Chain E: 




- Molecule 1: HEAT-LABILE ENTEROTOXIN

Chain F: 




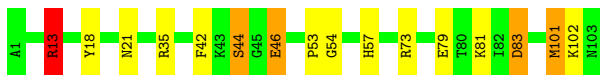
- Molecule 1: HEAT-LABILE ENTEROTOXIN

Chain G: 



- Molecule 1: HEAT-LABILE ENTEROTOXIN

Chain H: 



4 Data and refinement statistics

Property	Value	Source
Space group	P 1 21 1	Depositor
Cell constants a, b, c, α , β , γ	42.37Å 95.04Å 67.51Å 90.00° 100.71° 90.00°	Depositor
Resolution (Å)	20.00 – 1.30 19.38 – 1.30	Depositor EDS
% Data completeness (in resolution range)	(Not available) (20.00-1.30) 93.8 (19.38-1.30)	Depositor EDS
R_{merge}	0.05	Depositor
R_{sym}	(Not available)	Depositor
$\langle I/\sigma(I) \rangle$ ¹	2.02 (at 1.30Å)	Xtrriage
Refinement program	SHELXL-97	Depositor
R, R_{free}	0.134 , 0.189 0.137 , 0.180	Depositor DCC
R_{free} test set	6479 reflections (5.07%)	wwPDB-VP
Wilson B-factor (Å ²)	7.8	Xtrriage
Anisotropy	0.308	Xtrriage
Bulk solvent k_{sol} (e/Å ³), B_{sol} (Å ²)	0.33 , 67.2	EDS
L-test for twinning ²	$\langle L \rangle = 0.49$, $\langle L^2 \rangle = 0.32$	Xtrriage
Estimated twinning fraction	No twinning to report.	Xtrriage
F_o, F_c correlation	0.98	EDS
Total number of atoms	5099	wwPDB-VP
Average B, all atoms (Å ²)	13.0	wwPDB-VP

Xtrriage's analysis on translational NCS is as follows: *The largest off-origin peak in the Patterson function is 8.15% of the height of the origin peak. No significant pseudotranslation is detected.*

¹Intensities estimated from amplitudes.

²Theoretical values of $\langle |L| \rangle$, $\langle L^2 \rangle$ for acentric reflections are 0.5, 0.333 respectively for untwinned datasets, and 0.375, 0.2 for perfectly twinned datasets.

5 Model quality i

5.1 Standard geometry i

Bond lengths and bond angles in the following residue types are not validated in this section: GLA, GOL, BEZ

The Z score for a bond length (or angle) is the number of standard deviations the observed value is removed from the expected value. A bond length (or angle) with $|Z| > 5$ is considered an outlier worth inspection. RMSZ is the root-mean-square of all Z scores of the bond lengths (or angles).

Mol	Chain	Bond lengths		Bond angles	
		RMSZ	# Z >5	RMSZ	# Z >5
1	D	1.04	3/858 (0.3%)	1.55	13/1153 (1.1%)
1	E	1.05	3/865 (0.3%)	1.66	23/1163 (2.0%)
1	F	1.08	3/868 (0.3%)	1.64	19/1169 (1.6%)
1	G	1.03	1/864 (0.1%)	1.44	13/1158 (1.1%)
1	H	1.02	5/880 (0.6%)	2.23	15/1182 (1.3%)
All	All	1.05	15/4335 (0.3%)	1.73	83/5825 (1.4%)

All (15) bond length outliers are listed below:

Mol	Chain	Res	Type	Atoms	Z	Observed(Å)	Ideal(Å)
1	H	44	SER	CB-OG	6.78	1.51	1.42
1	H	54	GLY	N-CA	-6.48	1.36	1.46
1	D	26	SER	CB-OG	-6.43	1.33	1.42
1	F	83	ASP	CG-OD2	-6.30	1.10	1.25
1	H	46	GLU	CG-CD	-6.08	1.42	1.51
1	F	54	GLY	N-CA	-6.03	1.37	1.46
1	E	46	GLU	CG-CD	-5.85	1.43	1.51
1	G	46	GLU	CD-OE1	-5.82	1.19	1.25
1	D	79	GLU	CD-OE2	-5.71	1.19	1.25
1	H	79	GLU	CD-OE2	-5.53	1.19	1.25
1	D	54	GLY	N-CA	-5.50	1.37	1.46
1	F	101	MET	CG-SD	5.37	1.95	1.81
1	E	102[A]	LYS	C-O	5.13	1.33	1.23
1	E	102[B]	LYS	C-O	5.13	1.33	1.23
1	H	83	ASP	CG-OD2	-5.11	1.13	1.25

All (83) bond angle outliers are listed below:

Mol	Chain	Res	Type	Atoms	Z	Observed(°)	Ideal(°)
1	H	13[A]	ARG	CD-NE-CZ	39.33	178.66	123.60

Continued on next page...

Continued from previous page...

Mol	Chain	Res	Type	Atoms	Z	Observed(°)	Ideal(°)
1	H	13[B]	ARG	CD-NE-CZ	39.33	178.66	123.60
1	F	13	ARG	NE-CZ-NH1	14.87	127.73	120.30
1	D	35	ARG	NE-CZ-NH1	12.63	126.61	120.30
1	F	101	MET	CG-SD-CE	-12.14	80.77	100.20
1	H	73	ARG	NE-CZ-NH2	10.91	125.75	120.30
1	E	73	ARG	NE-CZ-NH1	10.75	125.67	120.30
1	F	43	LYS	CA-CB-CG	10.32	136.10	113.40
1	H	83	ASP	CB-CG-OD2	10.03	127.32	118.30
1	E	57	HIS	CG-ND1-CE1	10.02	122.23	108.20
1	E	18	TYR	CB-CG-CD1	9.93	126.96	121.00
1	G	34	LYS	CD-CE-NZ	9.91	134.49	111.70
1	D	57	HIS	CG-ND1-CE1	9.89	122.04	108.20
1	F	35	ARG	NE-CZ-NH2	-9.56	115.52	120.30
1	D	53	PRO	C-N-CA	9.25	141.73	122.30
1	H	57	HIS	CG-ND1-CE1	9.17	121.04	108.20
1	F	83	ASP	CB-CG-OD2	9.04	126.44	118.30
1	D	35	ARG	NE-CZ-NH2	-9.02	115.79	120.30
1	D	53	PRO	O-C-N	-8.82	108.21	123.20
1	E	101	MET	CG-SD-CE	-8.57	86.49	100.20
1	F	57	HIS	CG-ND1-CE1	8.17	119.64	108.20
1	G	57	HIS	CG-ND1-CE1	7.92	119.29	108.20
1	F	13	ARG	CD-NE-CZ	7.77	134.48	123.60
1	E	35	ARG	NE-CZ-NH2	-7.75	116.42	120.30
1	D	103	ASN	CA-CB-CG	7.46	129.81	113.40
1	F	75	THR	CA-CB-CG2	-7.30	102.18	112.40
1	F	70	ASP	CB-CG-OD1	7.01	124.61	118.30
1	E	35	ARG	NE-CZ-NH1	6.92	123.76	120.30
1	G	83	ASP	CB-CG-OD2	6.91	124.52	118.30
1	G	18	TYR	CB-CG-CD1	6.86	125.11	121.00
1	G	35	ARG	NE-CZ-NH2	-6.67	116.97	120.30
1	D	18	TYR	CB-CG-CD1	6.53	124.92	121.00
1	F	13	ARG	NH1-CZ-NH2	-6.46	112.30	119.40
1	E	102[A]	LYS	CA-CB-CG	6.45	127.59	113.40
1	E	102[B]	LYS	CA-CB-CG	6.45	127.59	113.40
1	E	102[A]	LYS	C-N-CA	6.32	137.50	121.70
1	E	102[B]	LYS	C-N-CA	6.32	137.50	121.70
1	E	103	ASN	N-CA-CB	-6.28	99.29	110.60
1	G	53	PRO	O-C-N	-6.28	112.52	123.20
1	G	73	ARG	CD-NE-CZ	6.26	132.37	123.60
1	H	35	ARG	NE-CZ-NH2	-6.24	117.18	120.30
1	E	53	PRO	C-N-CA	6.20	135.32	122.30
1	G	45	GLY	O-C-N	-6.09	112.96	122.70

Continued on next page...

Continued from previous page...

Mol	Chain	Res	Type	Atoms	Z	Observed(°)	Ideal(°)
1	D	13	ARG	CD-NE-CZ	6.04	132.06	123.60
1	G	18	TYR	CZ-CE2-CD2	6.01	125.21	119.80
1	H	13[A]	ARG	NE-CZ-NH2	-5.99	117.31	120.30
1	H	13[B]	ARG	NE-CZ-NH2	-5.99	117.31	120.30
1	D	53	PRO	CA-C-N	5.96	128.12	116.20
1	E	12	TYR	CG-CD1-CE1	-5.94	116.55	121.30
1	E	18	TYR	CB-CG-CD2	-5.91	117.45	121.00
1	F	35	ARG	NE-CZ-NH1	5.89	123.25	120.30
1	E	73	ARG	NE-CZ-NH2	-5.89	117.36	120.30
1	E	53	PRO	O-C-N	-5.88	113.19	123.20
1	H	53	PRO	O-C-N	-5.83	113.30	123.20
1	H	73	ARG	CD-NE-CZ	5.79	131.70	123.60
1	D	42	PHE	CB-CG-CD2	5.74	124.82	120.80
1	D	62	LYS	CD-CE-NZ	5.69	124.79	111.70
1	H	18	TYR	CG-CD1-CE1	5.68	125.84	121.30
1	E	103	ASN	CB-CG-OD1	-5.66	110.28	121.60
1	D	62	LYS	CG-CD-CE	5.66	128.88	111.90
1	H	44	SER	CA-CB-OG	-5.62	96.02	111.20
1	F	27	TYR	CG-CD1-CE1	5.61	125.79	121.30
1	F	88	TRP	CE2-CD2-CG	5.61	111.79	107.30
1	F	92	THR	CA-CB-CG2	-5.59	104.57	112.40
1	G	79	GLU	OE1-CD-OE2	-5.57	116.62	123.30
1	H	57	HIS	ND1-CG-CD2	-5.50	98.30	106.00
1	D	42	PHE	CB-CG-CD1	-5.45	116.99	120.80
1	H	42	PHE	CB-CG-CD2	5.37	124.56	120.80
1	H	53	PRO	C-N-CA	5.33	133.50	122.30
1	F	103	ASN	CB-CG-OD1	-5.32	110.97	121.60
1	E	57	HIS	ND1-CE1-NE2	-5.23	98.39	109.90
1	F	43	LYS	CD-CE-NZ	-5.20	99.74	111.70
1	F	35	ARG	CG-CD-NE	-5.16	100.96	111.80
1	E	60	SER	N-CA-CB	-5.16	102.76	110.50
1	G	27	TYR	CB-CG-CD1	5.12	124.07	121.00
1	E	46	GLU	CA-CB-CG	-5.07	102.24	113.40
1	F	62	LYS	CB-CG-CD	5.07	124.78	111.60
1	E	12	TYR	CD1-CE1-CZ	5.07	124.36	119.80
1	G	18	TYR	CD1-CE1-CZ	5.06	124.35	119.80
1	G	27	TYR	CG-CD1-CE1	5.05	125.34	121.30
1	E	43[A]	LYS	CA-CB-CG	5.04	124.49	113.40
1	E	43[B]	LYS	CA-CB-CG	5.04	124.49	113.40
1	F	57	HIS	ND1-CG-CD2	-5.03	98.96	106.00

There are no chirality outliers.

There are no planarity outliers.

5.2 Too-close contacts

In the following table, the Non-H and H(model) columns list the number of non-hydrogen atoms and hydrogen atoms in the chain respectively. The H(added) column lists the number of hydrogen atoms added and optimized by MolProbity. The Clashes column lists the number of clashes within the asymmetric unit, whereas Symm-Clashes lists symmetry-related clashes.

Mol	Chain	Non-H	H(model)	H(added)	Clashes	Symm-Clashes
1	D	831	0	846	3	0
1	E	835	0	852	9	0
1	F	839	0	846	5	0
1	G	836	0	857	1	0
1	H	846	0	869	7	0
2	D	12	0	12	0	0
2	E	12	0	12	0	0
2	F	12	0	11	0	0
2	G	12	0	11	0	0
2	H	12	0	11	0	0
3	D	6	0	8	0	0
3	G	6	0	8	0	0
3	H	6	0	8	0	0
4	F	9	0	4	0	0
4	G	9	0	4	0	0
4	H	9	0	4	0	0
5	D	154	0	0	0	0
5	E	163	0	0	5	0
5	F	150	0	0	1	0
5	G	173	0	0	1	0
5	H	167	0	0	5	0
All	All	5099	0	4363	23	0

The all-atom clashscore is defined as the number of clashes found per 1000 atoms (including hydrogen atoms). The all-atom clashscore for this structure is 3.

All (23) close contacts within the same asymmetric unit are listed below, sorted by their clash magnitude.

Atom-1	Atom-2	Interatomic distance (Å)	Clash overlap (Å)
1:H:102:LYS:HD3	5:H:1667:HOH:O	1.84	0.77
1:E:43[A]:LYS:HG3	5:E:1219:HOH:O	1.97	0.64
1:F:103:ASN:OXT	1:F:103:ASN:ND2	2.34	0.60

Continued on next page...

Continued from previous page...

Atom-1	Atom-2	Interatomic distance (Å)	Clash overlap (Å)
1:E:83:ASP:OD2	1:E:102[A]:LYS:HE3	2.04	0.57
1:F:75:THR:HG21	1:F:82[B]:ILE:HD11	1.89	0.54
1:H:13[B]:ARG:HD3	5:H:1593:HOH:O	2.10	0.52
1:H:81[B]:LYS:HE3	5:H:1605:HOH:O	2.10	0.51
1:D:58:ILE:CD1	1:E:34:LYS:HE2	2.41	0.51
1:E:46:GLU:HG2	5:E:1341:HOH:O	2.11	0.50
1:F:21:ASN:OD1	1:F:81:LYS:HD3	2.14	0.47
1:E:103:ASN:N	5:E:1279:HOH:O	2.47	0.46
1:H:21:ASN:HB2	5:H:1642:HOH:O	2.16	0.46
1:G:34:LYS:NZ	5:G:1532:HOH:O	2.49	0.45
1:F:81:LYS:NZ	5:F:1435:HOH:O	2.50	0.44
1:E:81:LYS:NZ	5:E:1367:HOH:O	2.52	0.42
1:D:101[B]:MET:HG3	1:E:76:TYR:CE2	2.54	0.42
1:H:83:ASP:OD1	5:H:1642:HOH:O	2.22	0.42
1:H:44:SER:OG	1:H:46:GLU:OE1	2.26	0.42
1:E:63:LYS:NZ	5:E:1273:HOH:O	2.46	0.42
1:D:103:ASN:OXT	1:D:103:ASN:ND2	2.54	0.40

There are no symmetry-related clashes.

5.3 Torsion angles [i](#)

5.3.1 Protein backbone [i](#)

In the following table, the Percentiles column shows the percent Ramachandran outliers of the chain as a percentile score with respect to all X-ray entries followed by that with respect to entries of similar resolution.

The Analysed column shows the number of residues for which the backbone conformation was analysed, and the total number of residues.

Mol	Chain	Analysed	Favoured	Allowed	Outliers	Percentiles	
1	D	104/103 (101%)	103 (99%)	1 (1%)	0	100	100
1	E	105/103 (102%)	104 (99%)	1 (1%)	0	100	100
1	F	105/103 (102%)	104 (99%)	1 (1%)	0	100	100
1	G	104/103 (101%)	102 (98%)	2 (2%)	0	100	100
1	H	106/103 (103%)	105 (99%)	1 (1%)	0	100	100
All	All	524/515 (102%)	518 (99%)	6 (1%)	0	100	100

There are no Ramachandran outliers to report.

5.3.2 Protein sidechains [i](#)

In the following table, the Percentiles column shows the percent sidechain outliers of the chain as a percentile score with respect to all X-ray entries followed by that with respect to entries of similar resolution.

The Analysed column shows the number of residues for which the sidechain conformation was analysed, and the total number of residues.

Mol	Chain	Analysed	Rotameric	Outliers	Percentiles
1	D	97/95 (102%)	96 (99%)	1 (1%)	76 48
1	E	98/95 (103%)	95 (97%)	3 (3%)	40 6
1	F	99/95 (104%)	97 (98%)	2 (2%)	55 17
1	G	98/95 (103%)	98 (100%)	0	100 100
1	H	100/95 (105%)	96 (96%)	4 (4%)	31 3
All	All	492/475 (104%)	482 (98%)	10 (2%)	60 17

All (10) residues with a non-rotameric sidechain are listed below:

Mol	Chain	Res	Type
1	D	103	ASN
1	E	26	SER
1	E	101	MET
1	E	103	ASN
1	F	43	LYS
1	F	103	ASN
1	H	13[A]	ARG
1	H	13[B]	ARG
1	H	101[A]	MET
1	H	101[B]	MET

Sometimes sidechains can be flipped to improve hydrogen bonding and reduce clashes. All (5) such sidechains are listed below:

Mol	Chain	Res	Type
1	D	94	ASN
1	E	16	GLN
1	E	94	ASN
1	E	103	ASN
1	H	94	ASN

5.3.3 RNA [i](#)

There are no RNA molecules in this entry.

5.4 Non-standard residues in protein, DNA, RNA chains [i](#)

There are no non-standard protein/DNA/RNA residues in this entry.

5.5 Carbohydrates [i](#)

There are no monosaccharides in this entry.

5.6 Ligand geometry [i](#)

11 ligands are modelled in this entry.

In the following table, the Counts columns list the number of bonds (or angles) for which Mogul statistics could be retrieved, the number of bonds (or angles) that are observed in the model and the number of bonds (or angles) that are defined in the Chemical Component Dictionary. The Link column lists molecule types, if any, to which the group is linked. The Z score for a bond length (or angle) is the number of standard deviations the observed value is removed from the expected value. A bond length (or angle) with $|Z| > 2$ is considered an outlier worth inspection. RMSZ is the root-mean-square of all Z scores of the bond lengths (or angles).

Mol	Type	Chain	Res	Link	Bond lengths			Bond angles		
					Counts	RMSZ	# Z > 2	Counts	RMSZ	# Z > 2
4	BEZ	H	1505	2	9,9,9	0.89	0	11,11,11	1.90	4 (36%)
2	GLA	G	1404	4	12,12,12	0.80	0	17,17,17	1.15	1 (5%)
2	GLA	E	1204	-	12,12,12	0.75	0	17,17,17	1.28	2 (11%)
4	BEZ	G	1405	2	9,9,9	1.00	0	11,11,11	1.53	2 (18%)
3	GOL	G	903	-	5,5,5	0.97	0	5,5,5	0.72	0
3	GOL	H	901	-	5,5,5	0.96	0	5,5,5	0.64	0
2	GLA	D	1104	-	12,12,12	0.97	0	17,17,17	1.05	1 (5%)
2	GLA	F	1304	4	12,12,12	0.85	0	17,17,17	1.31	2 (11%)
2	GLA	H	1504	4	12,12,12	0.68	0	17,17,17	0.88	1 (5%)
3	GOL	D	902	-	5,5,5	0.73	0	5,5,5	1.13	0
4	BEZ	F	1305	2	9,9,9	1.21	0	11,11,11	2.26	6 (54%)

In the following table, the Chirals column lists the number of chiral outliers, the number of chiral centers analysed, the number of these observed in the model and the number defined in the Chemical Component Dictionary. Similar counts are reported in the Torsion and Rings columns. '-' means no outliers of that kind were identified.

Mol	Type	Chain	Res	Link	Chirals	Torsions	Rings
4	BEZ	H	1505	2	-	0/4/4/4	0/1/1/1
2	GLA	G	1404	4	-	0/2/22/22	0/1/1/1
2	GLA	E	1204	-	-	0/2/22/22	0/1/1/1
4	BEZ	G	1405	2	-	4/4/4/4	0/1/1/1
3	GOL	G	903	-	-	0/4/4/4	-
3	GOL	H	901	-	-	0/4/4/4	-
2	GLA	D	1104	-	-	0/2/22/22	0/1/1/1
2	GLA	F	1304	4	-	0/2/22/22	0/1/1/1
2	GLA	H	1504	4	-	0/2/22/22	0/1/1/1
3	GOL	D	902	-	-	2/4/4/4	-
4	BEZ	F	1305	2	-	0/4/4/4	0/1/1/1

There are no bond length outliers.

All (19) bond angle outliers are listed below:

Mol	Chain	Res	Type	Atoms	Z	Observed(°)	Ideal(°)
4	F	1305	BEZ	C3-C2-C1	-4.46	115.07	120.34
4	H	1505	BEZ	C5-C6-C1	3.73	124.75	120.34
4	G	1405	BEZ	C2-C1-C	-3.46	113.58	120.39
4	G	1405	BEZ	C6-C1-C	3.09	126.48	120.39
4	F	1305	BEZ	C6-C1-C2	2.95	122.79	118.59
4	F	1305	BEZ	C4-C3-C2	2.77	124.41	120.19
4	F	1305	BEZ	C2-C1-C	-2.67	115.13	120.39
4	H	1505	BEZ	C4-C3-C2	2.67	124.25	120.19
2	F	1304	GLA	O5-C5-C4	2.38	114.02	109.69
2	E	1204	GLA	O1-C1-C2	2.37	115.70	109.03
2	H	1504	GLA	O5-C1-C2	2.32	114.43	110.28
2	G	1404	GLA	O5-C5-C6	-2.32	100.67	106.44
2	F	1304	GLA	O2-C2-C3	-2.28	105.08	110.35
4	F	1305	BEZ	O2-C-O1	-2.27	118.30	123.35
4	H	1505	BEZ	C3-C2-C1	-2.25	117.69	120.34
2	D	1104	GLA	C6-C5-C4	-2.20	107.85	113.00
2	E	1204	GLA	O4-C4-C3	-2.07	105.57	110.35
4	F	1305	BEZ	O2-C-C1	2.05	120.16	114.85
4	H	1505	BEZ	O2-C-C1	2.01	120.07	114.85

There are no chirality outliers.

All (6) torsion outliers are listed below:

Mol	Chain	Res	Type	Atoms
3	D	902	GOL	O1-C1-C2-C3
3	D	902	GOL	O1-C1-C2-O2

Continued on next page...

Continued from previous page...

Mol	Chain	Res	Type	Atoms
4	G	1405	BEZ	O2-C-C1-C6
4	G	1405	BEZ	O1-C-C1-C6
4	G	1405	BEZ	O2-C-C1-C2
4	G	1405	BEZ	O1-C-C1-C2

There are no ring outliers.

No monomer is involved in short contacts.

5.7 Other polymers [i](#)

There are no such residues in this entry.

5.8 Polymer linkage issues [i](#)

There are no chain breaks in this entry.

6 Fit of model and data [i](#)

6.1 Protein, DNA and RNA chains [i](#)

In the following table, the column labelled ‘#RSRZ> 2’ contains the number (and percentage) of RSRZ outliers, followed by percent RSRZ outliers for the chain as percentile scores relative to all X-ray entries and entries of similar resolution. The OWAB column contains the minimum, median, 95th percentile and maximum values of the occupancy-weighted average B-factor per residue. The column labelled ‘Q< 0.9’ lists the number of (and percentage) of residues with an average occupancy less than 0.9.

Mol	Chain	Analysed	<RSRZ>	#RSRZ>2	OWAB(Å ²)	Q<0.9
1	D	103/103 (100%)	-0.48	0 100 100	6, 10, 18, 31	0
1	E	103/103 (100%)	-0.42	1 (0%) 82 83	6, 10, 21, 31	0
1	F	103/103 (100%)	-0.53	0 100 100	6, 9, 17, 35	0
1	G	103/103 (100%)	-0.57	0 100 100	6, 9, 17, 22	0
1	H	103/103 (100%)	-0.58	0 100 100	6, 9, 17, 21	0
All	All	515/515 (100%)	-0.51	1 (0%) 95 94	6, 9, 19, 35	0

All (1) RSRZ outliers are listed below:

Mol	Chain	Res	Type	RSRZ
1	E	103	ASN	3.0

6.2 Non-standard residues in protein, DNA, RNA chains [i](#)

There are no non-standard protein/DNA/RNA residues in this entry.

6.3 Carbohydrates [i](#)

There are no monosaccharides in this entry.

6.4 Ligands [i](#)

In the following table, the Atoms column lists the number of modelled atoms in the group and the number defined in the chemical component dictionary. The B-factors column lists the minimum, median, 95th percentile and maximum values of B factors of atoms in the group. The column labelled ‘Q< 0.9’ lists the number of atoms with occupancy less than 0.9.

Mol	Type	Chain	Res	Atoms	RSCC	RSR	B-factors(\AA^2)	Q<0.9
4	BEZ	G	1405	9/9	0.72	0.30	32,35,39,42	0
2	GLA	D	1104	12/12	0.87	0.15	17,20,23,24	0
2	GLA	E	1204	12/12	0.90	0.13	15,19,26,33	0
3	GOL	D	902	6/6	0.94	0.10	15,24,31,38	0
3	GOL	G	903	6/6	0.95	0.07	13,15,20,25	0
2	GLA	G	1404	12/12	0.95	0.08	12,15,18,24	0
4	BEZ	H	1505	9/9	0.96	0.12	15,16,16,18	0
2	GLA	H	1504	12/12	0.97	0.06	9,12,14,15	0
4	BEZ	F	1305	9/9	0.97	0.06	10,12,16,23	0
3	GOL	H	901	6/6	0.98	0.06	9,10,11,13	0
2	GLA	F	1304	12/12	0.98	0.05	8,9,11,12	0

6.5 Other polymers [i](#)

There are no such residues in this entry.