



Full wwPDB EM Validation Report ⓘ

Mar 4, 2024 – 10:18 PM EST

PDB ID : 6DLV
EMDB ID : EMD-7958
Title : Cryo-EM of the GTP-bound human dynamin-1 polymer assembled on the membrane in the super constricted state
Authors : Kong, L.; Wang, H.; Fang, S.; Canagarajah, B.; Kehr, A.D.; Rice, W.J.; Hinshaw, J.E.
Deposited on : 2018-06-02
Resolution : 10.10 Å(reported)

This is a Full wwPDB EM Validation Report for a publicly released PDB entry.

We welcome your comments at validation@mail.wwpdb.org

A user guide is available at

<https://www.wwpdb.org/validation/2017/EMValidationReportHelp>

with specific help available everywhere you see the ⓘ symbol.

The types of validation reports are described at

<http://www.wwpdb.org/validation/2017/FAQs#types>.

The following versions of software and data (see [references ⓘ](#)) were used in the production of this report:

EMDB validation analysis : 0.0.1.dev70
MolProbity : 4.02b-467
Percentile statistics : 20191225.v01 (using entries in the PDB archive December 25th 2019)
MapQ : 1.9.13
Ideal geometry (proteins) : Engh & Huber (2001)
Ideal geometry (DNA, RNA) : Parkinson et al. (1996)
Validation Pipeline (wwPDB-VP) : 2.36

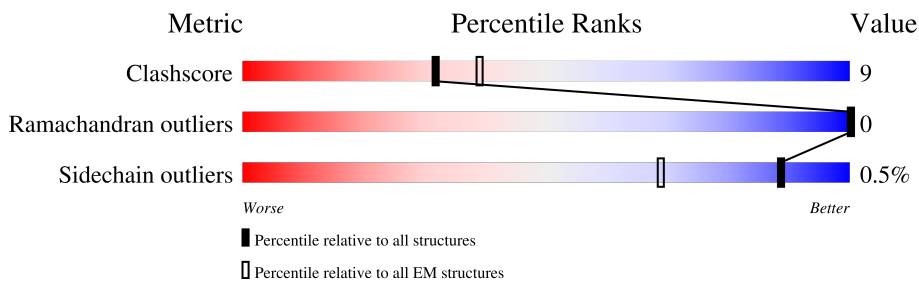
1 Overall quality at a glance

The following experimental techniques were used to determine the structure:

ELECTRON MICROSCOPY

The reported resolution of this entry is 10.10 Å.

Percentile scores (ranging between 0-100) for global validation metrics of the entry are shown in the following graphic. The table shows the number of entries on which the scores are based.



Metric	Whole archive (#Entries)	EM structures (#Entries)
Clashscore	158937	4297
Ramachandran outliers	154571	4023
Sidechain outliers	154315	3826

The table below summarises the geometric issues observed across the polymeric chains and their fit to the map. The red, orange, yellow and green segments of the bar indicate the fraction of residues that contain outliers for ≥ 3 , 2, 1 and 0 types of geometric quality criteria respectively. A grey segment represents the fraction of residues that are not modelled. The numeric value for each fraction is indicated below the corresponding segment, with a dot representing fractions $\leq 5\%$. The upper red bar (where present) indicates the fraction of residues that have poor fit to the EM map (all-atom inclusion $< 40\%$). The numeric value is given above the bar.

Mol	Chain	Length	Quality of chain
1	b	748	
1	c	748	
1	f	748	
1	g	748	

2 Entry composition

There is only 1 type of molecule in this entry. The entry contains 22031 atoms, of which 0 are hydrogens and 0 are deuteriums.

In the tables below, the AltConf column contains the number of residues with at least one atom in alternate conformation and the Trace column contains the number of residues modelled with at most 2 atoms.

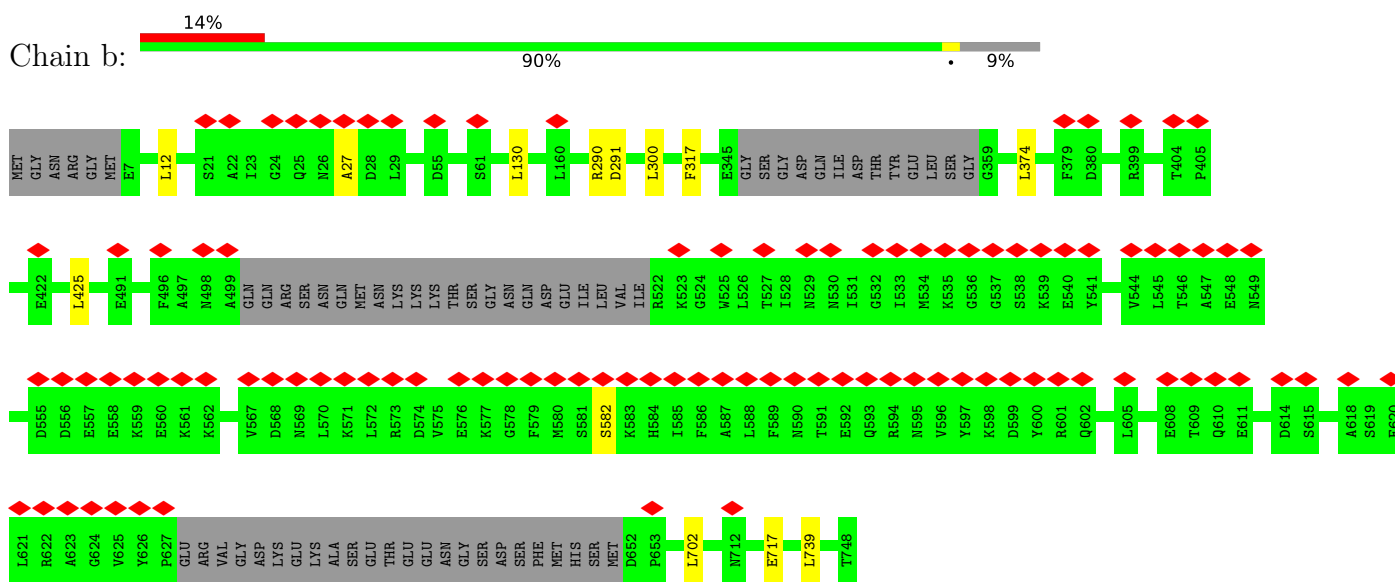
- Molecule 1 is a protein called Dynamin-1.

Mol	Chain	Residues	Atoms					AltConf	Trace
			Total	C	N	O	S		
1	b	683	Total	C	N	O	S	0	0
			5515	3482	967	1037	29		
1	c	684	Total	C	N	O	S	0	0
			5521	3485	971	1034	31		
1	f	682	Total	C	N	O	S	0	0
			5511	3480	963	1038	30		
1	g	679	Total	C	N	O	S	0	0
			5484	3461	961	1031	31		

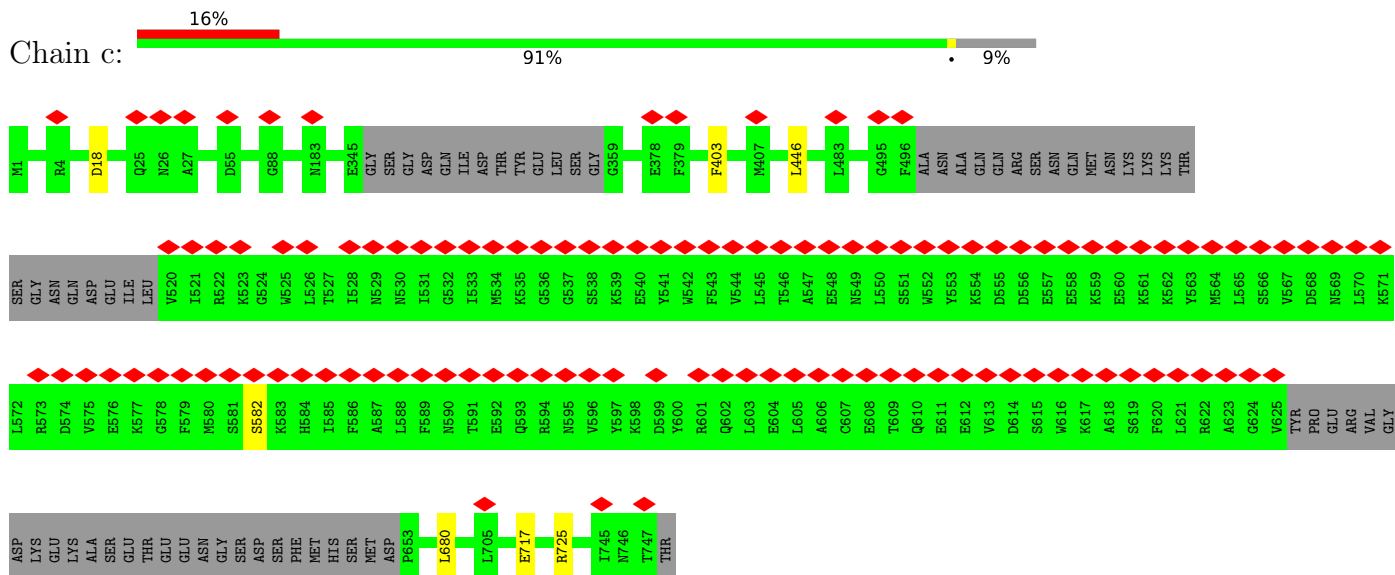
3 Residue-property plots

These plots are drawn for all protein, RNA, DNA and oligosaccharide chains in the entry. The first graphic for a chain summarises the proportions of the various outlier classes displayed in the second graphic. The second graphic shows the sequence view annotated by issues in geometry and atom inclusion in map density. Residues are color-coded according to the number of geometric quality criteria for which they contain at least one outlier: green = 0, yellow = 1, orange = 2 and red = 3 or more. A red diamond above a residue indicates a poor fit to the EM map for this residue (all-atom inclusion < 40%). Stretches of 2 or more consecutive residues without any outlier are shown as a green connector. Residues present in the sample, but not in the model, are shown in grey.

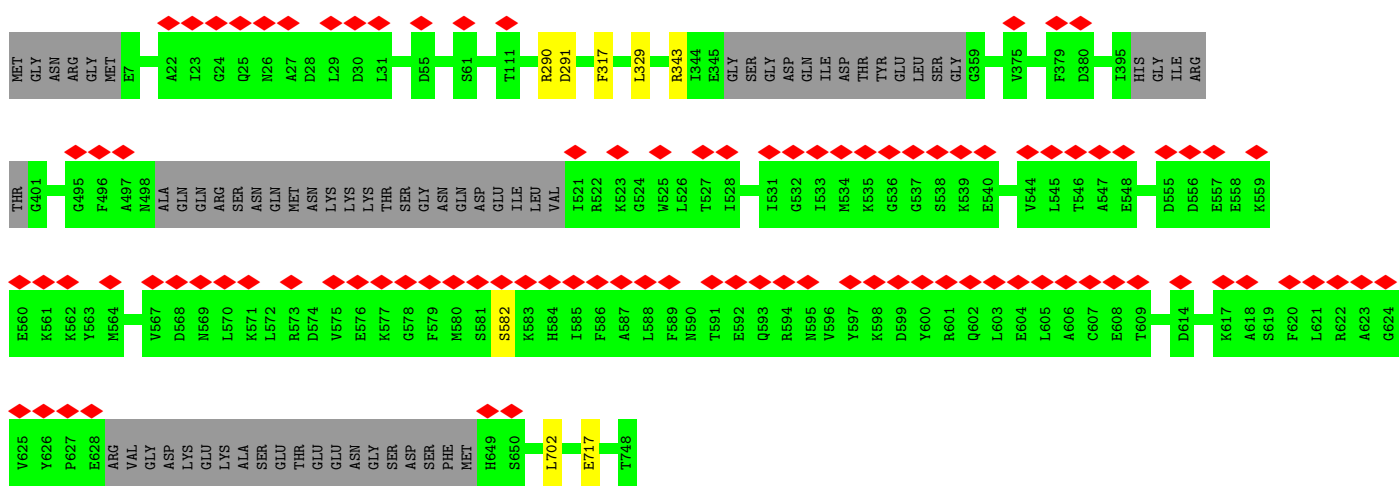
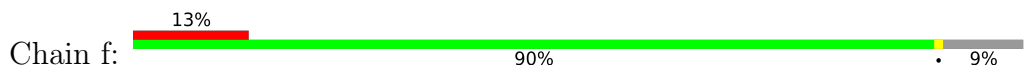
- Molecule 1: Dynamamin-1



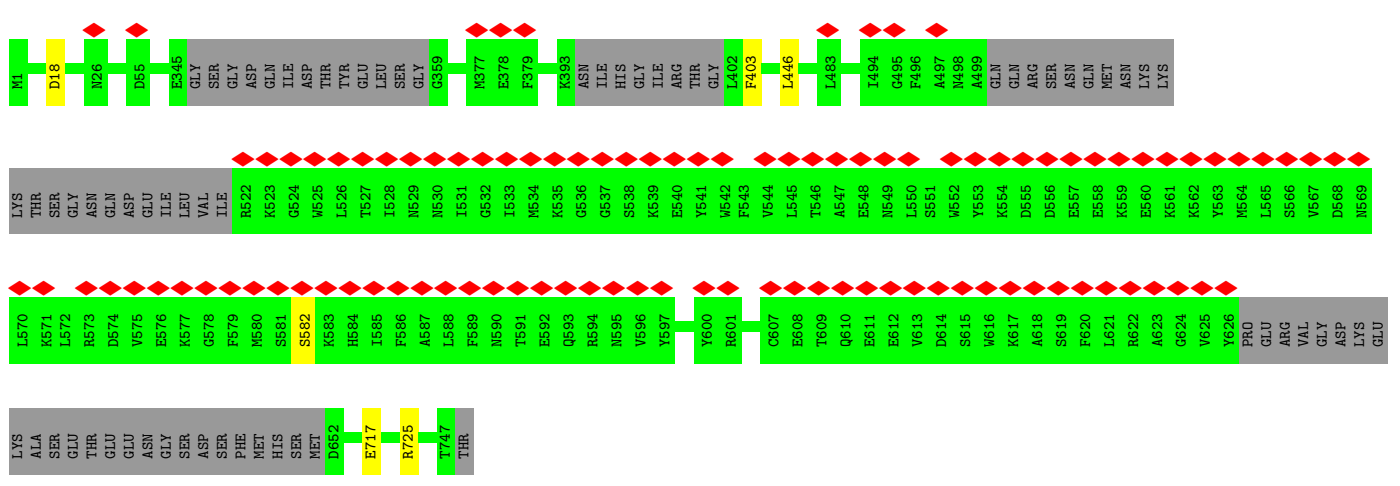
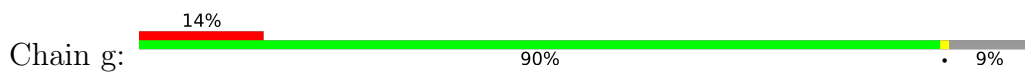
- Molecule 1: Dynamamin-1



- Molecule 1: Dynamamin-1



• Molecule 1: Dynamin-1



4 Experimental information

Property	Value	Source
EM reconstruction method	HELICAL	Depositor
Imposed symmetry	HELICAL, twist=26.14°, rise=14.63 Å, axial sym=C1	Depositor
Number of segments used	14322	Depositor
Resolution determination method	FSC 0.143 CUT-OFF	Depositor
CTF correction method	PHASE FLIPPING AND AMPLITUDE CORRECTION	Depositor
Microscope	FEI TECNAI 20	Depositor
Voltage (kV)	200	Depositor
Electron dose ($e^-/\text{Å}^2$)	36	Depositor
Minimum defocus (nm)	Not provided	
Maximum defocus (nm)	Not provided	
Magnification	Not provided	
Image detector	GATAN K2 SUMMIT (4k x 4k)	Depositor
Maximum map value	0.035	Depositor
Minimum map value	-0.015	Depositor
Average map value	0.001	Depositor
Map value standard deviation	0.003	Depositor
Recommended contour level	0.012	Depositor
Map size (Å)	614.68, 614.68, 614.68	wwPDB
Map dimensions	484, 484, 484	wwPDB
Map angles (°)	90.0, 90.0, 90.0	wwPDB
Pixel spacing (Å)	1.27, 1.27, 1.27	Depositor

5 Model quality i

5.1 Standard geometry i

The Z score for a bond length (or angle) is the number of standard deviations the observed value is removed from the expected value. A bond length (or angle) with $|Z| > 5$ is considered an outlier worth inspection. RMSZ is the root-mean-square of all Z scores of the bond lengths (or angles).

Mol	Chain	Bond lengths		Bond angles	
		RMSZ	# Z >5	RMSZ	# Z >5
1	b	0.35	0/5603	0.72	11/7549 (0.1%)
1	c	0.34	0/5607	0.65	3/7548 (0.0%)
1	f	0.35	0/5598	0.70	6/7540 (0.1%)
1	g	0.34	0/5569	0.66	3/7497 (0.0%)
All	All	0.34	0/22377	0.68	23/30134 (0.1%)

There are no bond length outliers.

All (23) bond angle outliers are listed below:

Mol	Chain	Res	Type	Atoms	Z	Observed(°)	Ideal(°)
1	b	291	ASP	CB-CG-OD1	8.40	125.86	118.30
1	f	291	ASP	CB-CG-OD1	8.22	125.70	118.30
1	c	18	ASP	CB-CG-OD1	6.24	123.91	118.30
1	g	18	ASP	CB-CG-OD1	6.20	123.88	118.30
1	f	582	SER	C-N-CA	5.97	136.63	121.70
1	b	582	SER	C-N-CA	5.78	136.15	121.70
1	c	582	SER	C-N-CA	5.78	136.15	121.70
1	f	317	PHE	C-N-CA	5.74	136.06	121.70
1	g	582	SER	C-N-CA	5.72	136.01	121.70
1	f	290	ARG	C-N-CA	5.52	135.50	121.70
1	b	317	PHE	C-N-CA	5.44	135.29	121.70
1	b	290	ARG	C-N-CA	5.30	134.95	121.70
1	b	739	LEU	CA-CB-CG	5.29	127.46	115.30
1	c	717	GLU	C-N-CA	5.26	134.85	121.70
1	b	300	LEU	CA-CB-CG	5.23	127.33	115.30
1	b	717	GLU	C-N-CA	5.21	134.72	121.70
1	b	130	LEU	CA-CB-CG	5.19	127.24	115.30
1	f	329	LEU	CA-CB-CG	5.11	127.05	115.30
1	b	425	LEU	CB-CG-CD1	5.10	119.66	111.00
1	b	12	LEU	CA-CB-CG	5.05	126.92	115.30
1	f	717	GLU	C-N-CA	5.04	134.30	121.70
1	b	27	ALA	N-CA-C	-5.04	97.39	111.00
1	g	717	GLU	C-N-CA	5.04	134.29	121.70

There are no chirality outliers.

There are no planarity outliers.

5.2 Too-close contacts [i](#)

In the following table, the Non-H and H(model) columns list the number of non-hydrogen atoms and hydrogen atoms in the chain respectively. The H(added) column lists the number of hydrogen atoms added and optimized by MolProbity. The Clashes column lists the number of clashes within the asymmetric unit, whereas Symm-Clashes lists symmetry-related clashes.

Mol	Chain	Non-H	H(model)	H(added)	Clashes	Symm-Clashes
1	b	5515	0	5588	0	0
1	c	5521	0	5612	0	0
1	f	5511	0	5579	0	0
1	g	5484	0	5558	0	0
All	All	22031	0	22337	0	0

The all-atom clashscore is defined as the number of clashes found per 1000 atoms (including hydrogen atoms). The all-atom clashscore for this structure is 9.

There are no clashes within the asymmetric unit.

There are no symmetry-related clashes.

5.3 Torsion angles [i](#)

5.3.1 Protein backbone [i](#)

In the following table, the Percentiles column shows the percent Ramachandran outliers of the chain as a percentile score with respect to all PDB entries followed by that with respect to all EM entries.

The Analysed column shows the number of residues for which the backbone conformation was analysed, and the total number of residues.

Mol	Chain	Analysed	Favoured	Allowed	Outliers	Percentiles	
1	b	675/748 (90%)	644 (95%)	31 (5%)	0	100	100
1	c	676/748 (90%)	657 (97%)	19 (3%)	0	100	100
1	f	672/748 (90%)	647 (96%)	25 (4%)	0	100	100
1	g	669/748 (89%)	644 (96%)	25 (4%)	0	100	100
All	All	2692/2992 (90%)	2592 (96%)	100 (4%)	0	100	100

There are no Ramachandran outliers to report.

5.3.2 Protein sidechains [i](#)

In the following table, the Percentiles column shows the percent sidechain outliers of the chain as a percentile score with respect to all PDB entries followed by that with respect to all EM entries.

The Analysed column shows the number of residues for which the sidechain conformation was analysed, and the total number of residues.

Mol	Chain	Analysed	Rotameric	Outliers	Percentiles	
1	b	611/667 (92%)	609 (100%)	2 (0%)	92	95
1	c	612/667 (92%)	608 (99%)	4 (1%)	84	90
1	f	612/667 (92%)	610 (100%)	2 (0%)	92	95
1	g	607/667 (91%)	604 (100%)	3 (0%)	88	93
All	All	2442/2668 (92%)	2431 (100%)	11 (0%)	89	93

All (11) residues with a non-rotameric sidechain are listed below:

Mol	Chain	Res	Type
1	b	374	LEU
1	b	702	LEU
1	c	403	PHE
1	c	446	LEU
1	c	680	LEU
1	c	725	ARG
1	f	343	ARG
1	f	702	LEU
1	g	403	PHE
1	g	446	LEU
1	g	725	ARG

Sometimes sidechains can be flipped to improve hydrogen bonding and reduce clashes. All (36) such sidechains are listed below:

Mol	Chain	Res	Type
1	b	17	GLN
1	b	33	GLN
1	b	50	ASN
1	b	183	ASN
1	b	283	GLN
1	b	301	GLN
1	b	303	GLN
1	b	549	ASN

Continued on next page...

Continued from previous page...

Mol	Chain	Res	Type
1	b	691	ASN
1	b	692	ASN
1	b	721	GLN
1	c	17	GLN
1	c	50	ASN
1	c	155	GLN
1	c	198	GLN
1	c	282	ASN
1	c	283	GLN
1	c	287	ASN
1	c	367	HIS
1	c	687	HIS
1	f	178	ASN
1	f	236	ASN
1	f	287	ASN
1	f	303	GLN
1	f	367	HIS
1	f	489	ASN
1	f	691	ASN
1	g	33	GLN
1	g	40	GLN
1	g	155	GLN
1	g	178	ASN
1	g	198	GLN
1	g	283	GLN
1	g	301	GLN
1	g	529	ASN
1	g	691	ASN

5.3.3 RNA [i](#)

There are no RNA molecules in this entry.

5.4 Non-standard residues in protein, DNA, RNA chains [i](#)

There are no non-standard protein/DNA/RNA residues in this entry.

5.5 Carbohydrates [i](#)

There are no monosaccharides in this entry.

5.6 Ligand geometry [i](#)

There are no ligands in this entry.

5.7 Other polymers [i](#)

There are no such residues in this entry.

5.8 Polymer linkage issues [i](#)

There are no chain breaks in this entry.

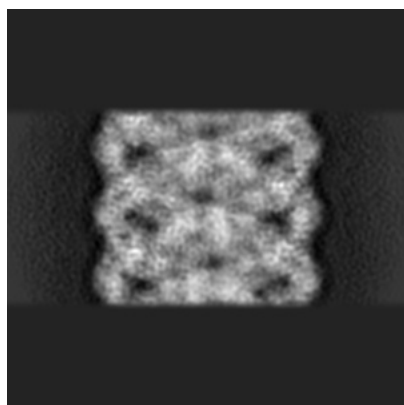
6 Map visualisation [i](#)

This section contains visualisations of the EMDB entry EMD-7958. These allow visual inspection of the internal detail of the map and identification of artifacts.

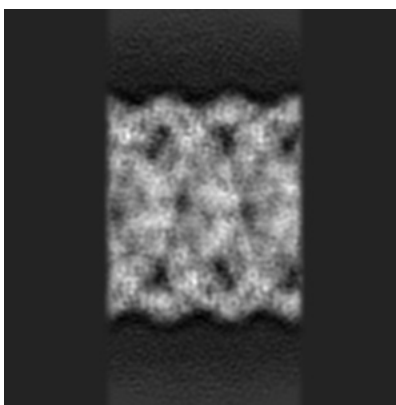
No raw map or half-maps were deposited for this entry and therefore no images, graphs, etc. pertaining to the raw map can be shown.

6.1 Orthogonal projections [i](#)

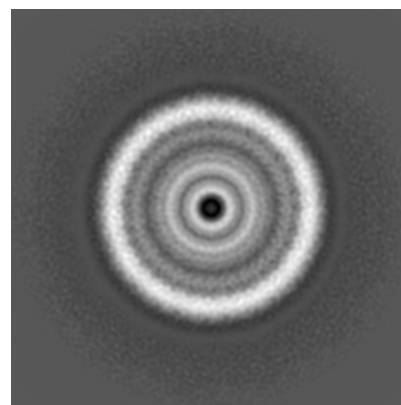
6.1.1 Primary map



X



Y

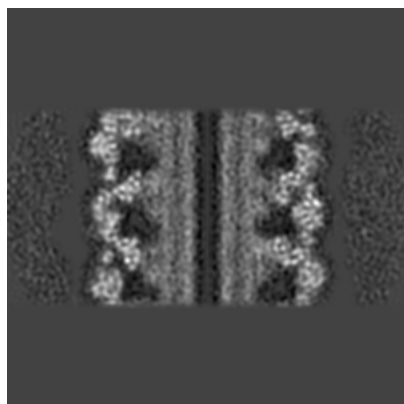


Z

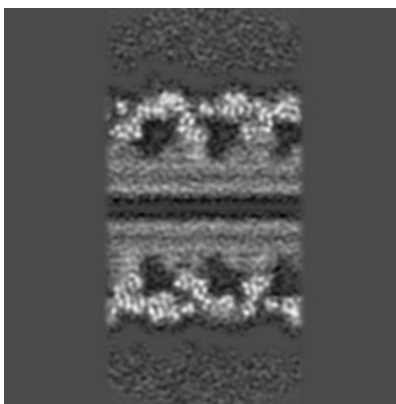
The images above show the map projected in three orthogonal directions.

6.2 Central slices [i](#)

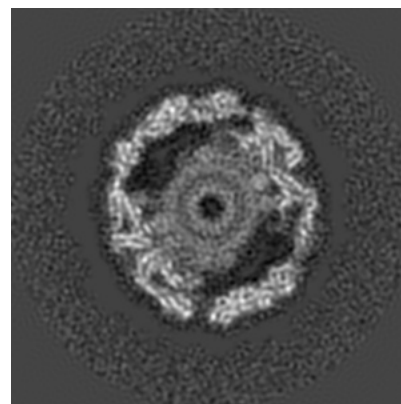
6.2.1 Primary map



X Index: 242



Y Index: 242

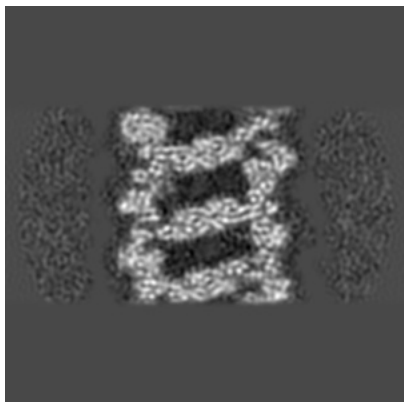


Z Index: 242

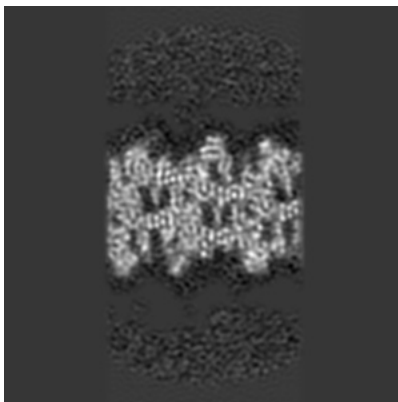
The images above show central slices of the map in three orthogonal directions.

6.3 Largest variance slices [\(i\)](#)

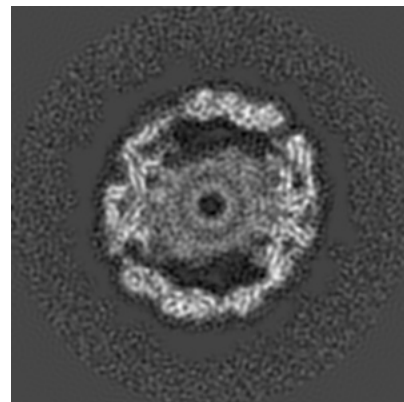
6.3.1 Primary map



X Index: 335



Y Index: 129

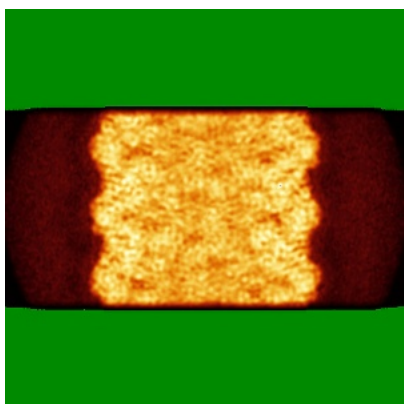


Z Index: 224

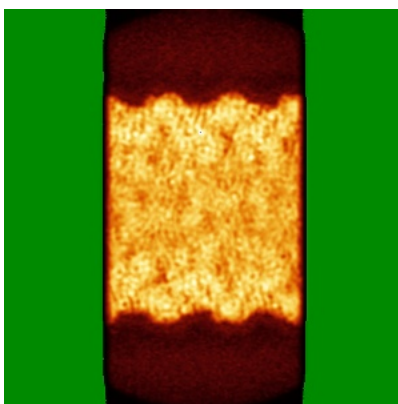
The images above show the largest variance slices of the map in three orthogonal directions.

6.4 Orthogonal standard-deviation projections (False-color) [\(i\)](#)

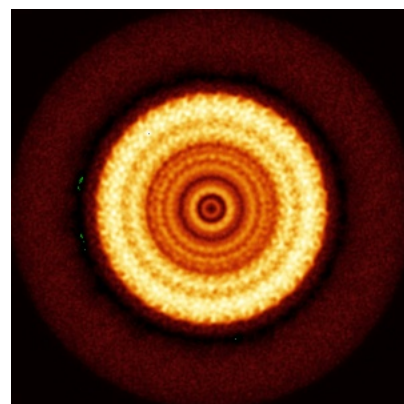
6.4.1 Primary map



X



Y



Z

The images above show the map standard deviation projections with false color in three orthogonal directions. Minimum values are shown in green, max in blue, and dark to light orange shades represent small to large values respectively.

6.5 Orthogonal surface views [i](#)

6.5.1 Primary map



The images above show the 3D surface view of the map at the recommended contour level 0.012. These images, in conjunction with the slice images, may facilitate assessment of whether an appropriate contour level has been provided.

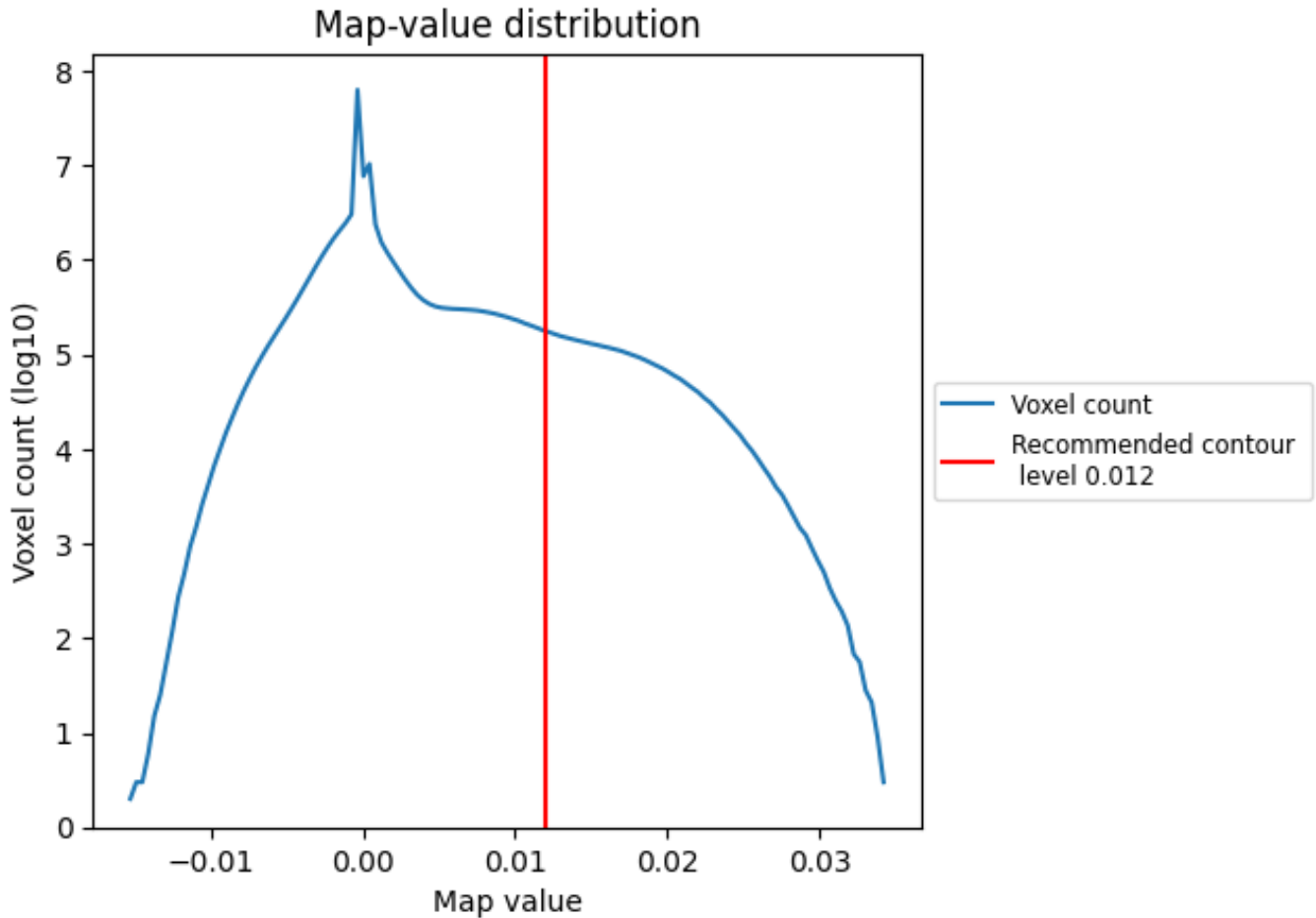
6.6 Mask visualisation [i](#)

This section was not generated. No masks/segmentation were deposited.

7 Map analysis [i](#)

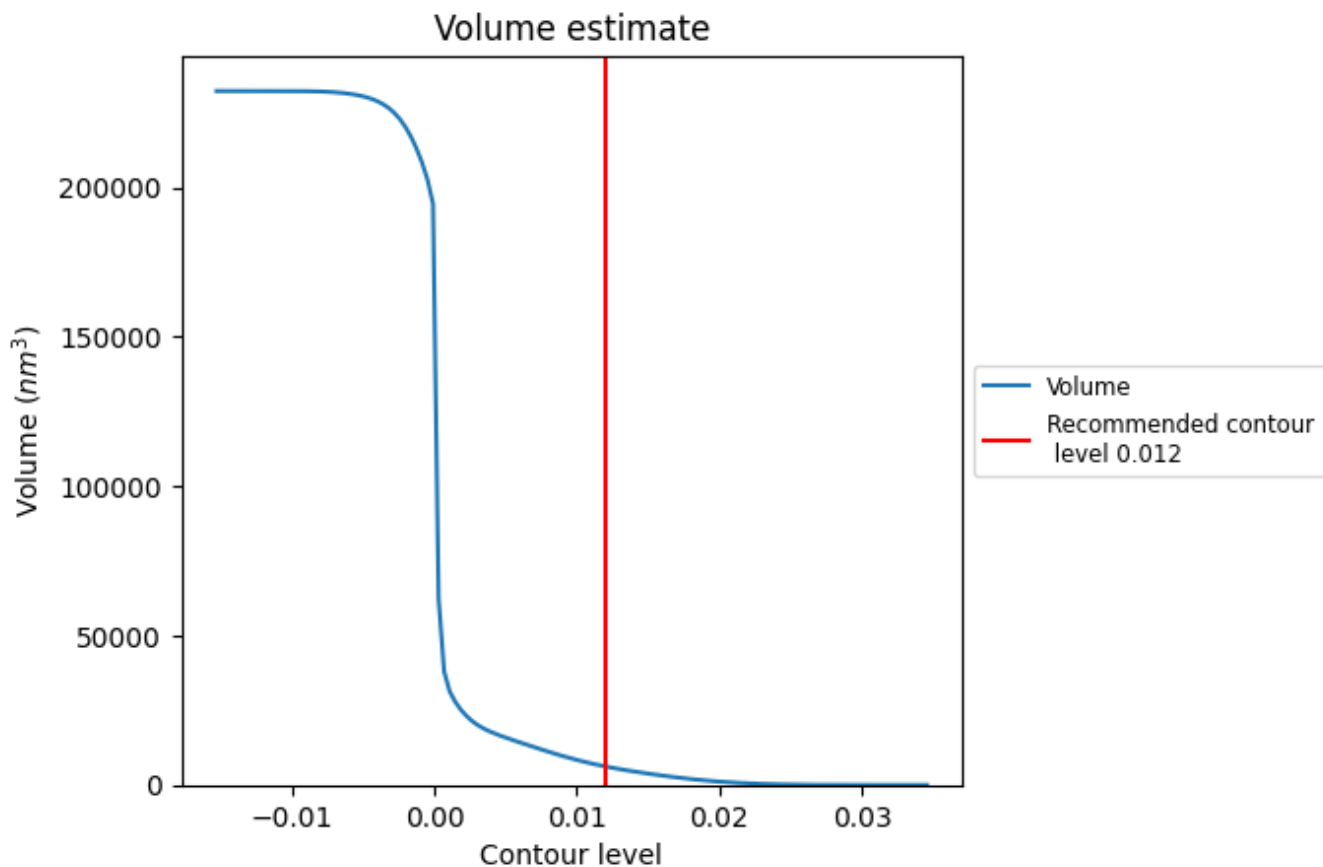
This section contains the results of statistical analysis of the map.

7.1 Map-value distribution [i](#)



The map-value distribution is plotted in 128 intervals along the x-axis. The y-axis is logarithmic. A spike in this graph at zero usually indicates that the volume has been masked.

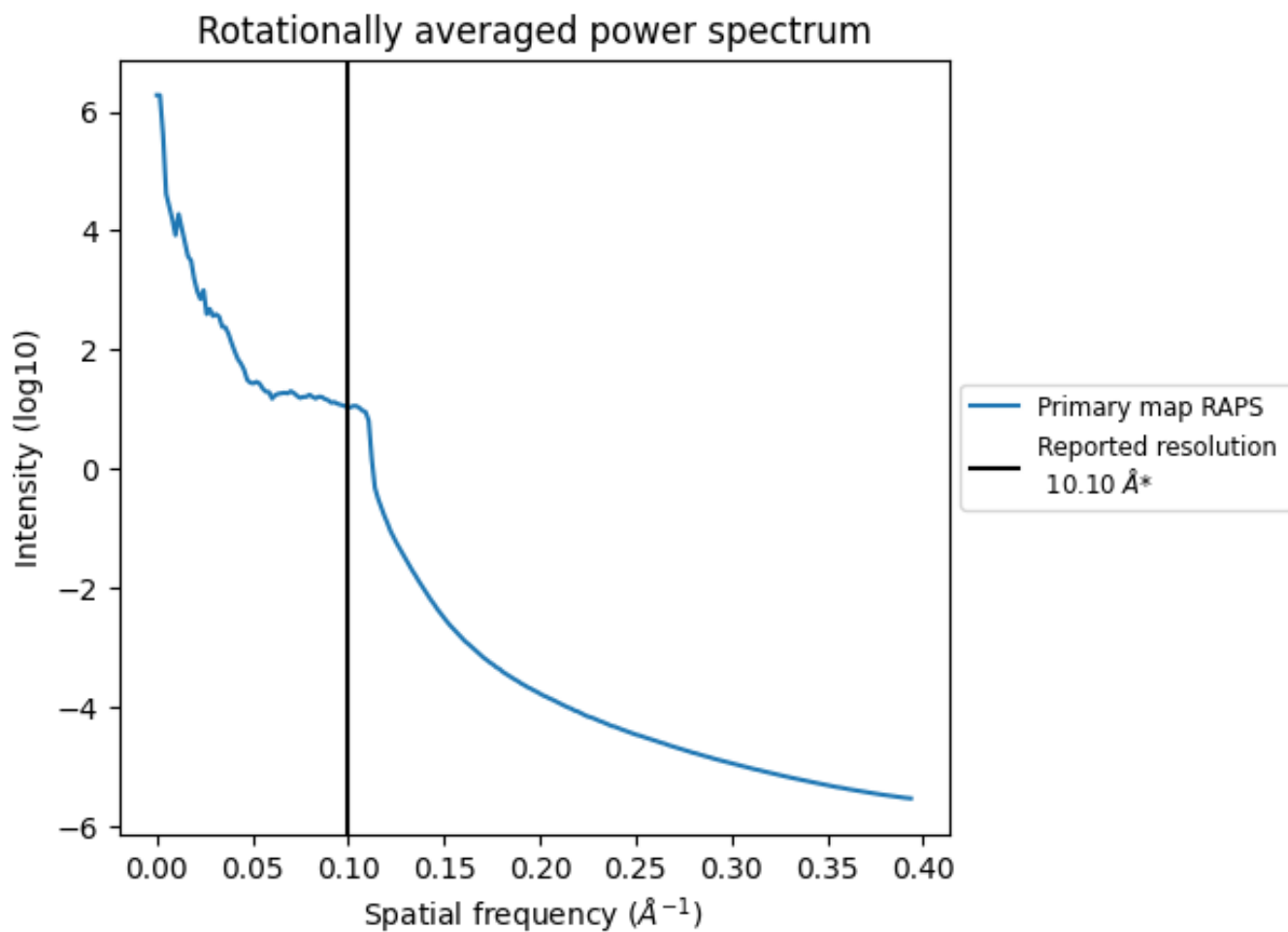
7.2 Volume estimate [\(i\)](#)



The volume at the recommended contour level is 6208 nm³; this corresponds to an approximate mass of 5607 kDa.

The volume estimate graph shows how the enclosed volume varies with the contour level. The recommended contour level is shown as a vertical line and the intersection between the line and the curve gives the volume of the enclosed surface at the given level.

7.3 Rotationally averaged power spectrum [i](#)



*Reported resolution corresponds to spatial frequency of 0.099\AA^{-1}

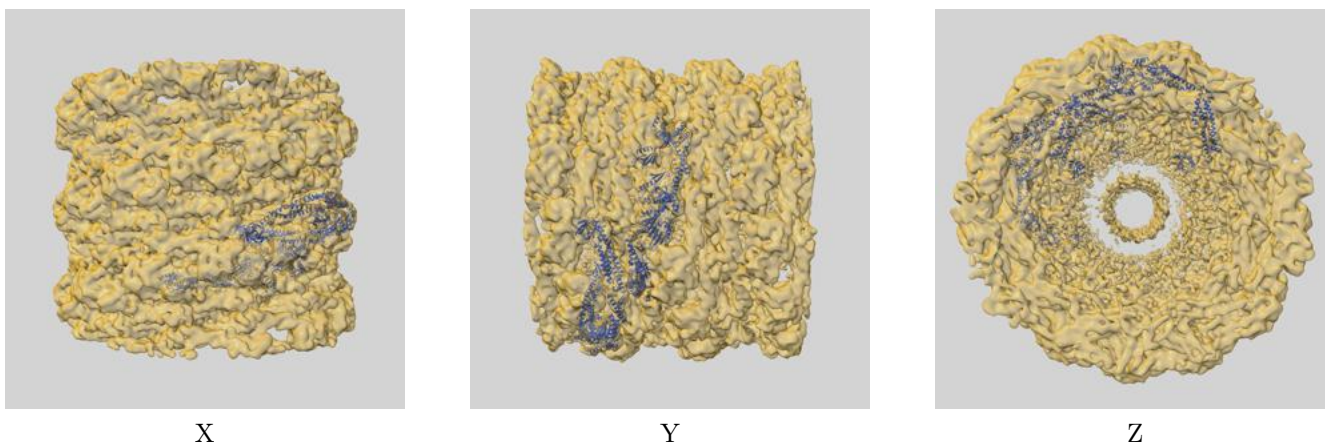
8 Fourier-Shell correlation

This section was not generated. No FSC curve or half-maps provided.

9 Map-model fit [i](#)

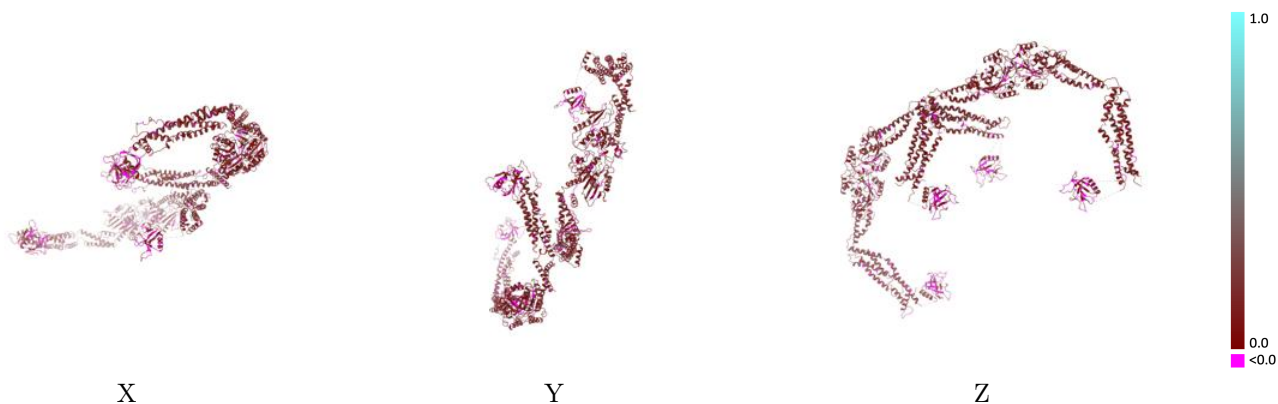
This section contains information regarding the fit between EMDB map EMD-7958 and PDB model 6DLV. Per-residue inclusion information can be found in section 3 on page 4.

9.1 Map-model overlay [i](#)



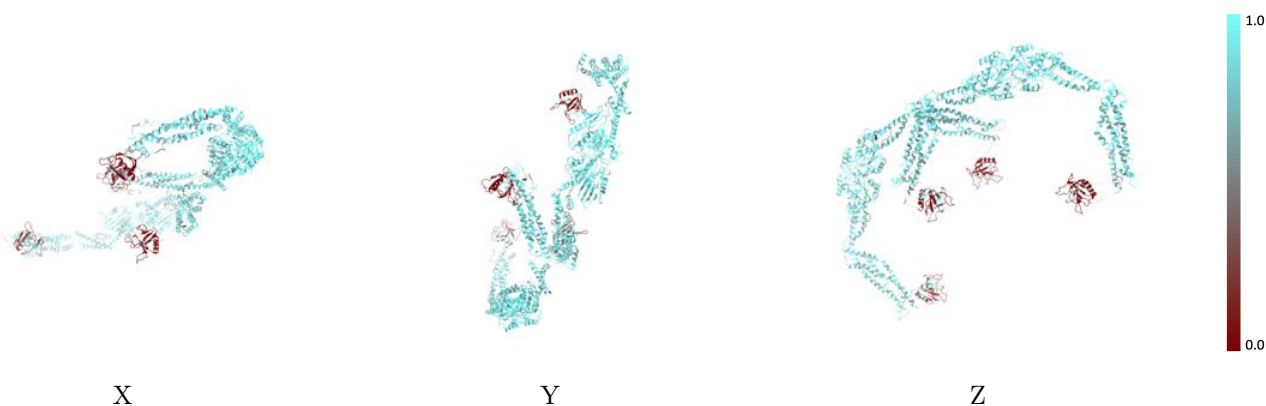
The images above show the 3D surface view of the map at the recommended contour level 0.012 at 50% transparency in yellow overlaid with a ribbon representation of the model coloured in blue. These images allow for the visual assessment of the quality of fit between the atomic model and the map.

9.2 Q-score mapped to coordinate model [\(i\)](#)



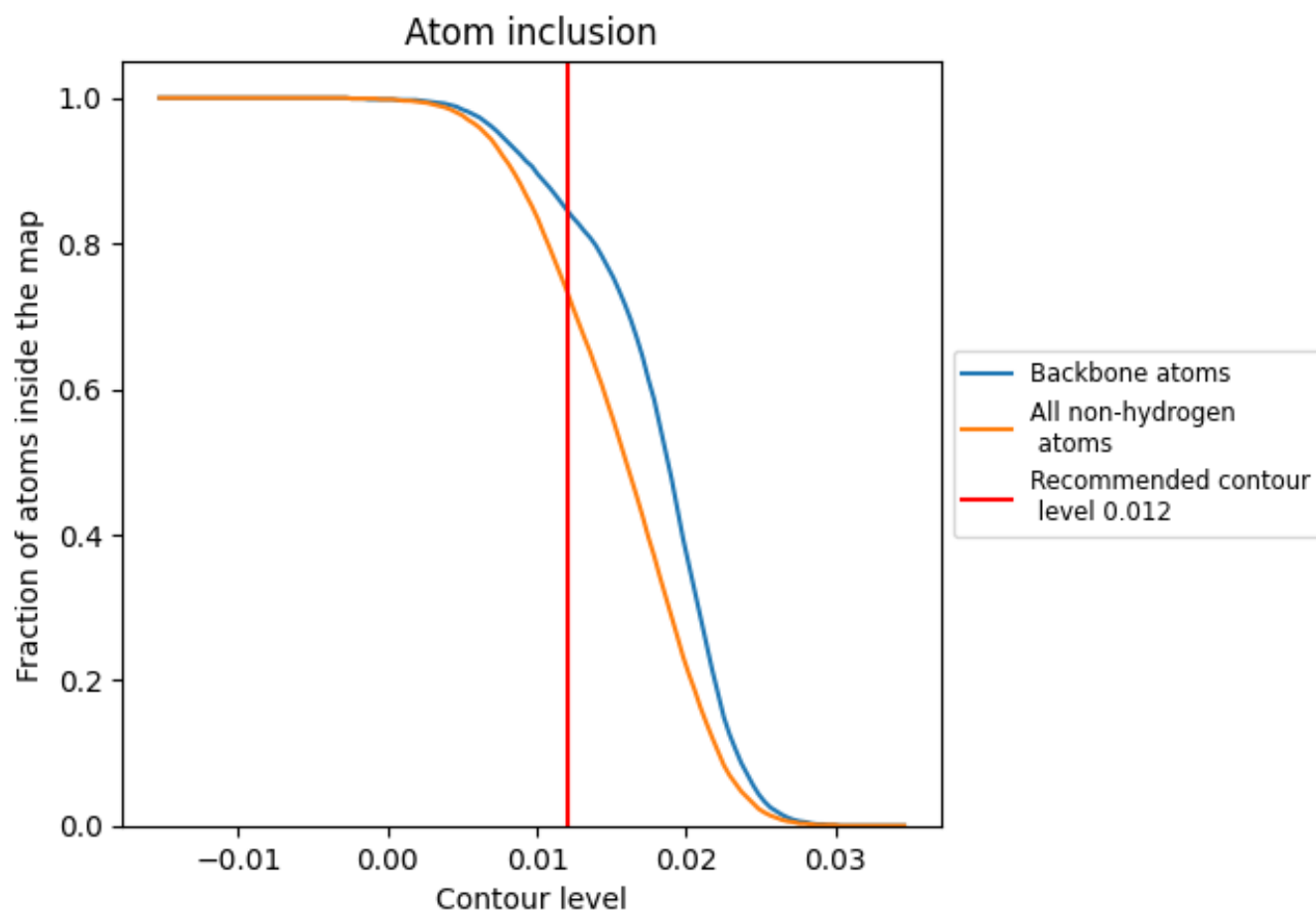
The images above show the model with each residue coloured according to its Q-score. This shows their resolvability in the map with higher Q-score values reflecting better resolvability. Please note: Q-score is calculating the resolvability of atoms, and thus high values are only expected at resolutions at which atoms can be resolved. Low Q-score values may therefore be expected for many entries.

9.3 Atom inclusion mapped to coordinate model [\(i\)](#)



The images above show the model with each residue coloured according to its atom inclusion. This shows to what extent they are inside the map at the recommended contour level (0.012).











9.4 Atom inclusion [i](#)



At the recommended contour level, 85% of all backbone atoms, 74% of all non-hydrogen atoms, are inside the map.

9.5 Map-model fit summary [i](#)

The table lists the average atom inclusion at the recommended contour level (0.012) and Q-score for the entire model and for each chain.

Chain	Atom inclusion	Q-score
All	 0.7350	 0.1330
b	 0.7300	 0.1280
c	 0.7260	 0.1330
f	 0.7440	 0.1380
g	 0.7420	 0.1320

