



Full wwPDB X-ray Structure Validation Report ⓘ

Aug 22, 2023 – 06:10 PM EDT

PDB ID : 3DMK
Title : Crystal structure of Down Syndrome Cell Adhesion Molecule (DSCAM) isoform 1.30.30, N-terminal eight Ig domains
Authors : Sawaya, M.R.; Wojtowicz, W.M.; Eisenberg, D.; Zipursky, S.L.
Deposited on : 2008-07-01
Resolution : 4.19 Å(reported)

This is a Full wwPDB X-ray Structure Validation Report for a publicly released PDB entry.

We welcome your comments at validation@mail.wwpdb.org

A user guide is available at

<https://www.wwpdb.org/validation/2017/XrayValidationReportHelp>

with specific help available everywhere you see the ⓘ symbol.

The types of validation reports are described at

<http://www.wwpdb.org/validation/2017/FAQs#types>.

The following versions of software and data (see [references ⓘ](#)) were used in the production of this report:

MolProbity : 4.02b-467
Mogul : 1.8.5 (274361), CSD as541be (2020)
Xtriage (Phenix) : 1.13
EDS : 2.35
Percentile statistics : 20191225.v01 (using entries in the PDB archive December 25th 2019)
Refmac : 5.8.0158
CCP4 : 7.0.044 (Gargrove)
Ideal geometry (proteins) : Engh & Huber (2001)
Ideal geometry (DNA, RNA) : Parkinson et al. (1996)
Validation Pipeline (wwPDB-VP) : 2.35

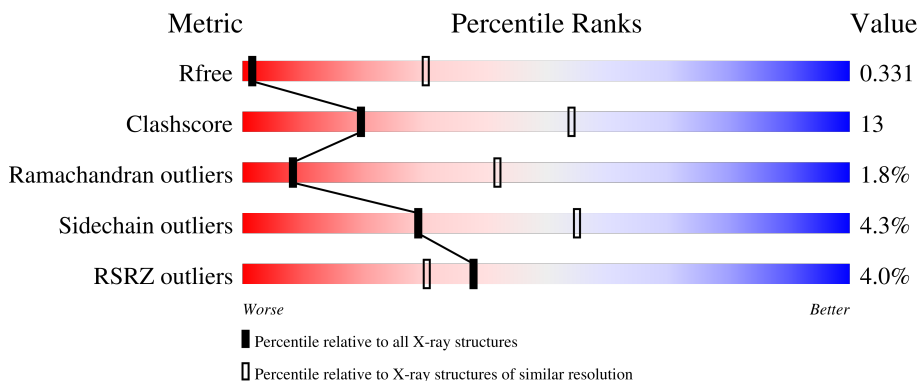
1 Overall quality at a glance

The following experimental techniques were used to determine the structure:

X-RAY DIFFRACTION

The reported resolution of this entry is 4.19 Å.

Percentile scores (ranging between 0-100) for global validation metrics of the entry are shown in the following graphic. The table shows the number of entries on which the scores are based.






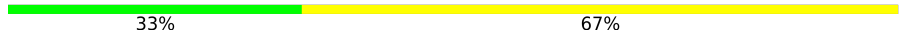
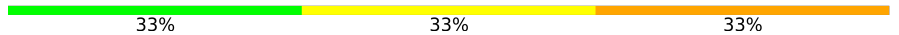
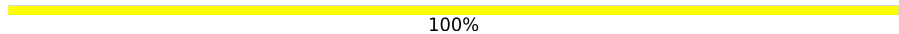
Metric	Whole archive (#Entries)	Similar resolution (#Entries, resolution range(Å))
R_{free}	130704	1005 (4.62-3.78)
Clashscore	141614	1044 (4.60-3.80)
Ramachandran outliers	138981	1000 (4.60-3.80)
Sidechain outliers	138945	1007 (4.62-3.78)
RSRZ outliers	127900	1063 (4.70-3.70)

The table below summarises the geometric issues observed across the polymeric chains and their fit to the electron density. The red, orange, yellow and green segments of the lower bar indicate the fraction of residues that contain outliers for ≥ 3 , 2, 1 and 0 types of geometric quality criteria respectively. A grey segment represents the fraction of residues that are not modelled. The numeric value for each fraction is indicated below the corresponding segment, with a dot representing fractions $\leq 5\%$. The upper red bar (where present) indicates the fraction of residues that have poor fit to the electron density. The numeric value is given above the bar.

Mol	Chain	Length	Quality of chain
1	A	816	 7% 67% 26% • 5%
1	B	816	 61% 21% • 17%
1	C	816	 3% 60% 22% • 17%
2	D	2	 50% 50%
2	E	2	 50% 50%

Continued on next page...

Continued from previous page...

Mol	Chain	Length	Quality of chain
2	F	2	 50% 50%
2	I	2	 50% 50%
3	G	3	 33% 67%
3	H	3	 33% 67%
3	J	3	 33% 33% 33%
3	K	3	 100%

The following table lists non-polymeric compounds, carbohydrate monomers and non-standard residues in protein, DNA, RNA chains that are outliers for geometric or electron-density-fit criteria:

Mol	Type	Chain	Res	Chirality	Geometry	Clashes	Electron density
2	NAG	I	1	-	-	-	X
3	NAG	G	1	X	-	-	-
3	NAG	G	3	-	-	-	X
3	NAG	H	1	X	-	-	-
3	NAG	H	2	-	-	-	X
3	NAG	H	3	-	-	-	X
3	NAG	K	1	X	-	-	X
4	GOL	A	787	-	-	-	X

2 Entry composition

There are 5 unique types of molecules in this entry. The entry contains 16740 atoms, of which 0 are hydrogens and 0 are deuteriums.

In the tables below, the ZeroOcc column contains the number of atoms modelled with zero occupancy, the AltConf column contains the number of residues with at least one atom in alternate conformation and the Trace column contains the number of residues modelled with at most 2 atoms.

- Molecule 1 is a protein called Down Syndrome Cell Adhesion Molecule (DSCAM) isoform 1.30.30, N-terminal eight Ig domains.

Mol	Chain	Residues	Atoms					ZeroOcc	AltConf	Trace
			Total	C	N	O	S			
1	A	775	5985	3778	1035	1147	25	0	0	0
1	B	676	5223	3295	908	998	22	0	0	0
1	C	676	5223	3295	908	998	22	0	0	0

There are 18 discrepancies between the modelled and reference sequences:

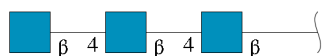
Chain	Residue	Modelled	Actual	Comment	Reference
A	776	HIS	-	expression tag	PDB 3DMK
A	777	HIS	-	expression tag	PDB 3DMK
A	778	HIS	-	expression tag	PDB 3DMK
A	779	HIS	-	expression tag	PDB 3DMK
A	780	HIS	-	expression tag	PDB 3DMK
A	781	HIS	-	expression tag	PDB 3DMK
B	776	HIS	-	expression tag	PDB 3DMK
B	777	HIS	-	expression tag	PDB 3DMK
B	778	HIS	-	expression tag	PDB 3DMK
B	779	HIS	-	expression tag	PDB 3DMK
B	780	HIS	-	expression tag	PDB 3DMK
B	781	HIS	-	expression tag	PDB 3DMK
C	776	HIS	-	expression tag	PDB 3DMK
C	777	HIS	-	expression tag	PDB 3DMK
C	778	HIS	-	expression tag	PDB 3DMK
C	779	HIS	-	expression tag	PDB 3DMK
C	780	HIS	-	expression tag	PDB 3DMK
C	781	HIS	-	expression tag	PDB 3DMK

- Molecule 2 is an oligosaccharide called 2-acetamido-2-deoxy-beta-D-glucopyranose-(1-4)-2-acetamido-2-deoxy-beta-D-glucopyranose.



Mol	Chain	Residues	Atoms				ZeroOcc	AltConf	Trace
			Total	C	N	O			
2	D	2	28	16	2	10	0	0	0
2	E	2	28	16	2	10	0	0	0
2	F	2	28	16	2	10	0	0	0
2	I	2	28	16	2	10	0	0	0

- Molecule 3 is an oligosaccharide called 2-acetamido-2-deoxy-beta-D-glucopyranose-(1-4)-2-acetamido-2-deoxy-beta-D-glucopyranose-(1-4)-2-acetamido-2-deoxy-beta-D-glucopyranose.



Mol	Chain	Residues	Atoms				ZeroOcc	AltConf	Trace
			Total	C	N	O			
3	G	3	42	24	3	15	0	0	0
3	H	3	42	24	3	15	0	0	0
3	J	3	42	24	3	15	0	0	0
3	K	3	42	24	3	15	0	0	0

- Molecule 4 is GLYCEROL (three-letter code: GOL) (formula: C₃H₈O₃).



Mol	Chain	Residues	Atoms			ZeroOcc	AltConf
4	A	1	Total	C	O	0	0
			6	3	3		
4	A	1	Total	C	O	0	0
			6	3	3		
4	B	1	Total	C	O	0	0
			6	3	3		
4	B	1	Total	C	O	0	0
			6	3	3		

- Molecule 5 is SULFATE ION (three-letter code: SO4) (formula: O₄S).

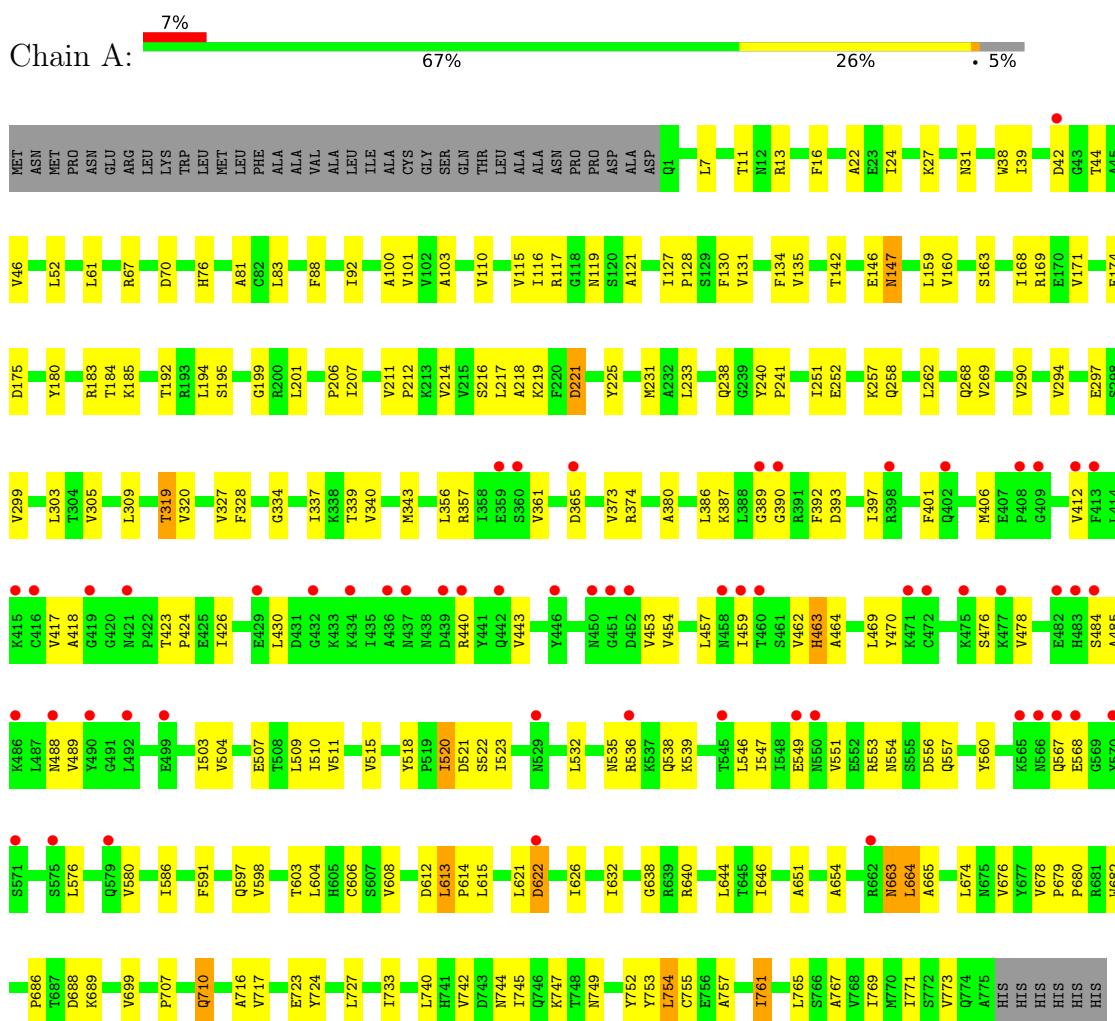


Mol	Chain	Residues	Atoms			ZeroOcc	AltConf
5	B	1	Total	O	S	0	0
			5	4	1		

3 Residue-property plots

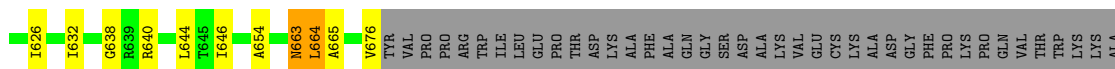
These plots are drawn for all protein, RNA, DNA and oligosaccharide chains in the entry. The first graphic for a chain summarises the proportions of the various outlier classes displayed in the second graphic. The second graphic shows the sequence view annotated by issues in geometry and electron density. Residues are color-coded according to the number of geometric quality criteria for which they contain at least one outlier: green = 0, yellow = 1, orange = 2 and red = 3 or more. A red dot above a residue indicates a poor fit to the electron density ($RSRZ > 2$). Stretches of 2 or more consecutive residues without any outlier are shown as a green connector. Residues present in the sample, but not in the model, are shown in grey.

- Molecule 1: Down Syndrome Cell Adhesion Molecule (DSCAM) isoform 1.30.30, N-terminal eight Ig domains



- Molecule 1: Down Syndrome Cell Adhesion Molecule (DSCAM) isoform 1.30.30, N-terminal eight Ig domains





VAL GLY ASP THR PRO GLY GLU TYR LYS ASP LEU LYS LYS SER ASP ASN ILE ARG VAL GLU TYR VAL PRO PRO ARG TRP ILE LEU PRO THR ASP LYS PHE ALA ALA GLN GLY SER ASP ALA LYS VAL GLU CYS LYS ALA ASP GLY PHE PRO LYS GLN MET VAL THR TRP LYS ALA HIS

HIS
HIS
HIS
HIS

- Molecule 2: 2-acetamido-2-deoxy-beta-D-glucopyranose-(1-4)-2-acetamido-2-deoxy-beta-D-glucopyranose

Chain D: 50% 50%

MAG1
MAG2

- Molecule 2: 2-acetamido-2-deoxy-beta-D-glucopyranose-(1-4)-2-acetamido-2-deoxy-beta-D-glucopyranose

Chain E: 50% 50%

MAG1
MAG2

- Molecule 2: 2-acetamido-2-deoxy-beta-D-glucopyranose-(1-4)-2-acetamido-2-deoxy-beta-D-glucopyranose

Chain F: 50% 50%

MAG1
MAG2

- Molecule 2: 2-acetamido-2-deoxy-beta-D-glucopyranose-(1-4)-2-acetamido-2-deoxy-beta-D-glucopyranose

Chain I: 50% 50%

MAG1
MAG2

- Molecule 3: 2-acetamido-2-deoxy-beta-D-glucopyranose-(1-4)-2-acetamido-2-deoxy-beta-D-glucopyranose-(1-4)-2-acetamido-2-deoxy-beta-D-glucopyranose

Chain G: 33% 67%


MAG1
MAG2
MAG3

- Molecule 3: 2-acetamido-2-deoxy-beta-D-glucopyranose-(1-4)-2-acetamido-2-deoxy-beta-D-glucopyranose-(1-4)-2-acetamido-2-deoxy-beta-D-glucopyranose

Chain H:  33% 67%

MAG1
MAG2
MAG3

- Molecule 3: 2-acetamido-2-deoxy-beta-D-glucopyranose-(1-4)-2-acetamido-2-deoxy-beta-D-glucopyranose-(1-4)-2-acetamido-2-deoxy-beta-D-glucopyranose

Chain J:  33% 33% 33%

MAG1
MAG2
MAG3

- Molecule 3: 2-acetamido-2-deoxy-beta-D-glucopyranose-(1-4)-2-acetamido-2-deoxy-beta-D-glucopyranose-(1-4)-2-acetamido-2-deoxy-beta-D-glucopyranose

Chain K:  100%

MAG1
MAG2
MAG3

4 Data and refinement statistics

Property	Value	Source
Space group	I 2 2 2	Depositor
Cell constants a, b, c, α , β , γ	118.46Å 177.61Å 434.05Å 90.00° 90.00° 90.00°	Depositor
Resolution (Å)	12.00 – 4.19 11.99 – 4.19	Depositor EDS
% Data completeness (in resolution range)	99.4 (12.00-4.19) 99.4 (11.99-4.19)	Depositor EDS
R_{merge}	0.07	Depositor
R_{sym}	(Not available)	Depositor
$\langle I/\sigma(I) \rangle$ ¹	3.72 (at 4.19Å)	Xtrriage
Refinement program	REFMAC	Depositor
R, R_{free}	0.280 , 0.327 0.284 , 0.331	Depositor DCC
R_{free} test set	1618 reflections (4.97%)	wwPDB-VP
Wilson B-factor (Å ²)	99.4	Xtrriage
Anisotropy	0.178	Xtrriage
Bulk solvent k_{sol} (e/Å ³), B_{sol} (Å ²)	0.19 , 107.9	EDS
L-test for twinning ²	$\langle L \rangle = 0.48$, $\langle L^2 \rangle = 0.31$	Xtrriage
Estimated twinning fraction	No twinning to report.	Xtrriage
F_o, F_c correlation	0.80	EDS
Total number of atoms	16740	wwPDB-VP
Average B, all atoms (Å ²)	53.0	wwPDB-VP

Xtrriage's analysis on translational NCS is as follows: *The largest off-origin peak in the Patterson function is 2.38% of the height of the origin peak. No significant pseudotranslation is detected.*

¹Intensities estimated from amplitudes.

²Theoretical values of $\langle |L| \rangle$, $\langle L^2 \rangle$ for acentric reflections are 0.5, 0.333 respectively for untwinned datasets, and 0.375, 0.2 for perfectly twinned datasets.

5 Model quality [i](#)

5.1 Standard geometry [i](#)

Bond lengths and bond angles in the following residue types are not validated in this section: NAG, SO4, GOL

The Z score for a bond length (or angle) is the number of standard deviations the observed value is removed from the expected value. A bond length (or angle) with $|Z| > 5$ is considered an outlier worth inspection. RMSZ is the root-mean-square of all Z scores of the bond lengths (or angles).

Mol	Chain	Bond lengths		Bond angles	
		RMSZ	# Z >5	RMSZ	# Z >5
1	A	0.33	0/6113	0.52	0/8303
1	B	0.38	0/5334	0.54	0/7246
1	C	0.33	0/5334	0.52	0/7246
All	All	0.35	0/16781	0.53	0/22795

There are no bond length outliers.

There are no bond angle outliers.

There are no chirality outliers.

There are no planarity outliers.

5.2 Too-close contacts [i](#)

In the following table, the Non-H and H(model) columns list the number of non-hydrogen atoms and hydrogen atoms in the chain respectively. The H(added) column lists the number of hydrogen atoms added and optimized by MolProbity. The Clashes column lists the number of clashes within the asymmetric unit, whereas Symm-Clashes lists symmetry-related clashes.

Mol	Chain	Non-H	H(model)	H(added)	Clashes	Symm-Clashes
1	A	5985	0	5928	174	0
1	B	5223	0	5172	128	1
1	C	5223	0	5174	131	1
2	D	28	0	25	2	0
2	E	28	0	25	1	0
2	F	28	0	25	1	0
2	I	28	0	25	0	0
3	G	42	0	37	0	0
3	H	42	0	37	0	0
3	J	42	0	37	1	0

Continued on next page...

Continued from previous page...

Mol	Chain	Non-H	H(model)	H(added)	Clashes	Symm-Clashes
3	K	42	0	37	0	0
4	A	12	0	16	0	0
4	B	12	0	16	0	0
5	B	5	0	0	0	0
All	All	16740	0	16554	425	1

The all-atom clashscore is defined as the number of clashes found per 1000 atoms (including hydrogen atoms). The all-atom clashscore for this structure is 13.

All (425) close contacts within the same asymmetric unit are listed below, sorted by their clash magnitude.

Atom-1	Atom-2	Interatomic distance (Å)	Clash overlap (Å)
1:A:654:ALA:HB2	1:A:676:VAL:HG12	1.38	1.00
1:A:733:ILE:HG23	1:A:742:VAL:HG22	1.46	0.97
1:B:412:VAL:HB	1:B:459:ILE:HG22	1.53	0.90
1:C:412:VAL:HB	1:C:459:ILE:HG22	1.56	0.87
1:C:504:VAL:HG12	1:C:581:MET:HB2	1.56	0.87
1:C:401:PHE:CE2	1:C:485:ALA:HB3	2.11	0.86
1:A:412:VAL:HB	1:A:459:ILE:HG22	1.58	0.85
1:B:654:ALA:HB2	1:B:676:VAL:HG12	1.59	0.85
1:A:654:ALA:HB2	1:A:676:VAL:CG1	2.08	0.84
1:B:320:VAL:HG21	1:B:361:VAL:HG21	1.61	0.82
1:A:320:VAL:HG21	1:A:361:VAL:HG21	1.62	0.82
1:A:401:PHE:CE2	1:A:485:ALA:HB3	2.14	0.82
1:B:401:PHE:CE2	1:B:485:ALA:HB3	2.15	0.81
1:C:320:VAL:HG21	1:C:361:VAL:HG21	1.62	0.81
1:A:217:LEU:HD23	1:B:217:LEU:HD23	1.62	0.81
1:A:218:ALA:HA	1:B:217:LEU:HD21	1.66	0.78
1:A:217:LEU:HD21	1:B:218:ALA:HA	1.64	0.78
1:C:417:VAL:HG22	1:C:454:VAL:HG22	1.65	0.77
1:A:699:VAL:HG13	1:A:740:LEU:HB3	1.65	0.77
1:C:596:ALA:HB2	1:C:602:LEU:HD21	1.65	0.77
1:A:417:VAL:HG22	1:A:454:VAL:HG22	1.68	0.76
1:C:504:VAL:HG11	1:C:665:ALA:HB3	1.67	0.75
1:B:503:ILE:HG21	1:B:551:VAL:HG21	1.70	0.74
1:A:217:LEU:HD23	1:B:217:LEU:CD2	2.17	0.74
1:A:217:LEU:CD2	1:B:217:LEU:HD23	2.18	0.74
1:B:417:VAL:HG22	1:B:454:VAL:HG22	1.70	0.74
1:C:373:VAL:HG23	1:C:380:ALA:HB3	1.69	0.74
1:B:76:HIS:HB3	1:B:100:ALA:HB3	1.68	0.74
1:C:532:LEU:HD23	1:C:546:LEU:HD13	1.68	0.73

Continued on next page...

Continued from previous page...

Atom-1	Atom-2	Interatomic distance (Å)	Clash overlap (Å)
1:A:373:VAL:HG23	1:A:380:ALA:HB3	1.70	0.73
1:B:127:ILE:HD13	1:B:135:VAL:HG12	1.71	0.72
1:A:651:ALA:HA	1:A:676:VAL:HG11	1.72	0.71
1:A:503:ILE:HG21	1:A:551:VAL:HG21	1.72	0.71
1:B:373:VAL:HG23	1:B:380:ALA:HB3	1.71	0.71
1:A:532:LEU:HD21	1:A:546:LEU:HD22	1.71	0.71
1:C:76:HIS:HB3	1:C:100:ALA:HB3	1.71	0.71
1:B:632:ILE:CG2	1:B:644:LEU:HD11	2.21	0.71
1:C:503:ILE:HG21	1:C:551:VAL:HG21	1.71	0.71
1:A:76:HIS:HB3	1:A:100:ALA:HB3	1.73	0.71
1:C:632:ILE:CG2	1:C:644:LEU:HD11	2.20	0.71
1:A:597:GLN:OE1	1:A:761:ILE:HG22	1.91	0.70
1:C:127:ILE:HD13	1:C:135:VAL:HG12	1.73	0.70
1:A:532:LEU:CD2	1:A:546:LEU:HD22	2.22	0.70
1:C:430:LEU:HD12	1:C:470:TYR:CZ	2.28	0.69
1:B:412:VAL:HB	1:B:459:ILE:CG2	2.22	0.69
1:A:612:ASP:O	1:A:614:PRO:HD2	1.93	0.69
1:A:225:TYR:HB2	1:A:231:MET:HE3	1.74	0.68
1:B:612:ASP:O	1:B:614:PRO:HD2	1.93	0.68
1:A:586:ILE:HA	1:A:608:VAL:HG22	1.76	0.67
1:B:586:ILE:HA	1:B:608:VAL:HG22	1.76	0.67
1:A:632:ILE:CG2	1:A:644:LEU:HD11	2.24	0.67
1:C:612:ASP:O	1:C:614:PRO:HD2	1.94	0.67
1:A:67:ARG:HH11	2:D:1:NAG:H81	1.60	0.67
1:A:319:THR:HG22	1:A:389:GLY:CA	2.24	0.67
1:A:127:ILE:HD13	1:A:135:VAL:HG12	1.76	0.66
1:B:476:SER:OG	1:B:478:VAL:HG12	1.96	0.66
1:C:532:LEU:CD2	1:C:546:LEU:HD13	2.26	0.65
1:B:535:ASN:C	1:B:535:ASN:HD22	2.00	0.65
1:A:532:LEU:HD21	1:A:546:LEU:CD2	2.27	0.64
1:A:430:LEU:HD12	1:A:470:TYR:CZ	2.33	0.64
1:B:225:TYR:HB2	1:B:231:MET:HE3	1.79	0.64
1:B:430:LEU:HD12	1:B:470:TYR:CZ	2.32	0.64
1:B:168:ILE:HD12	1:B:201:LEU:HD11	1.80	0.64
1:C:476:SER:OG	1:C:478:VAL:HG12	1.98	0.64
1:C:231:MET:CE	1:C:305:VAL:HG22	2.29	0.63
1:A:211:VAL:HG22	1:A:294:VAL:CG1	2.29	0.63
1:A:476:SER:OG	1:A:478:VAL:HG12	1.99	0.63
1:C:168:ILE:HD12	1:C:201:LEU:HD11	1.80	0.63
1:A:231:MET:CE	1:A:305:VAL:HG22	2.29	0.63
1:A:412:VAL:HB	1:A:459:ILE:CG2	2.28	0.63

Continued on next page...

Continued from previous page...

Atom-1	Atom-2	Interatomic distance (Å)	Clash overlap (Å)
1:A:532:LEU:O	1:A:538:GLN:OE1	2.17	0.63
1:A:676:VAL:HG13	1:A:676:VAL:O	1.99	0.62
1:B:211:VAL:HG22	1:B:294:VAL:CG1	2.30	0.62
1:C:412:VAL:HB	1:C:459:ILE:CG2	2.27	0.62
1:B:251:ILE:HD11	1:B:258:GLN:HG3	1.81	0.61
1:A:110:VAL:HG12	1:A:199:GLY:HA3	1.82	0.61
1:C:110:VAL:HG12	1:C:199:GLY:HA3	1.83	0.61
1:C:211:VAL:HG22	1:C:294:VAL:CG1	2.30	0.61
1:A:423:THR:CG2	1:A:453:VAL:HG23	2.31	0.60
1:A:168:ILE:HD12	1:A:201:LEU:HD11	1.83	0.60
1:A:717:VAL:H	1:A:723:GLU:CD	2.03	0.60
1:B:110:VAL:HG12	1:B:199:GLY:HA3	1.83	0.60
1:C:251:ILE:HD11	1:C:258:GLN:HG3	1.82	0.59
1:C:592:GLU:O	1:C:593:GLU:C	2.40	0.59
1:A:251:ILE:HD11	1:A:258:GLN:HG3	1.84	0.59
1:A:747:LYS:HA	1:A:773:VAL:HG21	1.84	0.59
1:B:231:MET:CE	1:B:305:VAL:HG22	2.32	0.59
1:A:231:MET:HE1	1:A:305:VAL:HG22	1.84	0.59
1:C:423:THR:CG2	1:C:453:VAL:HG23	2.33	0.59
1:B:83:LEU:HD13	1:B:92:ILE:CG2	2.33	0.58
1:A:707:PRO:CD	1:A:761:ILE:HD11	2.33	0.58
1:A:591:PHE:CE1	1:A:604:LEU:HD13	2.39	0.58
1:B:340:VAL:HG22	1:B:373:VAL:HG12	1.86	0.58
1:B:231:MET:HE1	1:B:305:VAL:HG22	1.84	0.58
1:C:262:LEU:HD21	1:C:268:GLN:HB2	1.86	0.58
1:A:262:LEU:HD21	1:A:268:GLN:HB2	1.85	0.57
1:C:121:ALA:HB2	1:C:171:VAL:HG21	1.86	0.57
1:A:185:LYS:HB2	1:A:192:THR:HG22	1.87	0.57
1:B:121:ALA:HB2	1:B:171:VAL:HG21	1.87	0.57
1:A:678:VAL:HG13	1:A:679:PRO:HD2	1.87	0.57
1:B:146:GLU:C	1:B:147:ASN:HD22	2.08	0.57
1:B:262:LEU:HD21	1:B:268:GLN:HB2	1.87	0.56
1:B:488:ASN:HB3	1:B:518:TYR:HB2	1.86	0.56
1:B:532:LEU:CD2	1:B:546:LEU:HD22	2.36	0.56
1:A:511:VAL:HG21	1:A:576:LEU:HD22	1.87	0.56
1:B:423:THR:CG2	1:B:453:VAL:HG23	2.35	0.56
1:C:225:TYR:HB2	1:C:231:MET:HE3	1.86	0.56
1:C:551:VAL:HG12	1:C:580:VAL:HG13	1.87	0.56
1:C:586:ILE:HD11	1:C:606:CYS:SG	2.45	0.56
1:C:83:LEU:HD13	1:C:92:ILE:CG2	2.36	0.56
1:C:254:THR:HG22	1:C:593:GLU:O	2.05	0.56

Continued on next page...

Continued from previous page...

Atom-1	Atom-2	Interatomic distance (Å)	Clash overlap (Å)
1:A:121:ALA:HB2	1:A:171:VAL:HG21	1.88	0.56
1:A:504:VAL:HG11	1:A:665:ALA:O	2.06	0.56
1:C:511:VAL:HG21	1:C:576:LEU:HD22	1.88	0.56
1:A:83:LEU:HB2	1:A:92:ILE:HG22	1.88	0.55
1:A:488:ASN:HB3	1:A:518:TYR:HB2	1.88	0.55
1:A:680:PRO:HB2	1:A:765:LEU:HD13	1.87	0.55
1:A:211:VAL:HG22	1:A:294:VAL:HG12	1.87	0.55
1:B:211:VAL:HG22	1:B:294:VAL:HG12	1.89	0.55
1:C:488:ASN:HB3	1:C:518:TYR:HB2	1.88	0.55
1:C:586:ILE:HA	1:C:608:VAL:HG22	1.87	0.55
1:A:83:LEU:HD13	1:A:92:ILE:CG2	2.37	0.55
1:A:340:VAL:HG22	1:A:373:VAL:HG12	1.89	0.55
1:A:654:ALA:CB	1:A:676:VAL:HG12	2.26	0.55
1:B:185:LYS:HB2	1:B:192:THR:HG22	1.89	0.55
1:B:83:LEU:HB2	1:B:92:ILE:HG22	1.88	0.55
1:A:146:GLU:C	1:A:147:ASN:HD22	2.09	0.54
1:B:591:PHE:CE1	1:B:604:LEU:HD13	2.43	0.54
1:A:418:ALA:CB	1:A:426:ILE:HD11	2.37	0.54
1:C:146:GLU:C	1:C:147:ASN:HD22	2.11	0.54
1:C:83:LEU:HB2	1:C:92:ILE:HG22	1.89	0.54
1:A:217:LEU:CD2	1:B:217:LEU:CD2	2.84	0.54
1:B:397:ILE:HD12	1:B:397:ILE:O	2.08	0.54
1:C:211:VAL:HG22	1:C:294:VAL:HG12	1.88	0.54
1:C:654:ALA:HB2	1:C:676:VAL:HG12	1.89	0.54
1:B:83:LEU:HD13	1:B:92:ILE:HG23	1.90	0.54
1:A:225:TYR:HD1	1:A:231:MET:HE2	1.73	0.54
1:C:322:PHE:O	1:C:478:VAL:HG23	2.08	0.54
1:B:418:ALA:CB	1:B:426:ILE:HD11	2.38	0.53
1:B:518:TYR:O	1:B:518:TYR:CD1	2.61	0.53
1:C:185:LYS:HB2	1:C:192:THR:HG22	1.90	0.53
1:C:212:PRO:HA	1:C:238:GLN:O	2.09	0.53
1:A:504:VAL:CG1	1:A:665:ALA:HB1	2.39	0.53
1:C:340:VAL:HG22	1:C:373:VAL:HG12	1.90	0.53
1:A:532:LEU:CD2	1:A:546:LEU:HD13	2.38	0.53
1:B:206:PRO:O	1:B:207:ILE:HD13	2.09	0.53
1:B:567:GLN:O	1:B:568:GLU:HG3	2.09	0.53
1:C:418:ALA:CB	1:C:426:ILE:HD11	2.39	0.52
1:C:532:LEU:CD2	1:C:546:LEU:HD22	2.38	0.52
1:A:397:ILE:HD12	1:A:397:ILE:O	2.09	0.52
1:B:38:TRP:O	1:B:46:VAL:HG22	2.09	0.52
1:B:212:PRO:HA	1:B:238:GLN:O	2.08	0.52

Continued on next page...

Continued from previous page...

Atom-1	Atom-2	Interatomic distance (Å)	Clash overlap (Å)
1:C:518:TYR:CD1	1:C:518:TYR:O	2.62	0.52
1:B:406:MET:SD	1:B:462:VAL:HG11	2.49	0.52
1:B:520:ILE:HD13	1:B:521:ASP:N	2.25	0.52
1:B:328:PHE:HD2	1:B:356:LEU:HD12	1.74	0.52
1:C:591:PHE:CZ	1:C:604:LEU:HD13	2.43	0.52
1:B:169:ARG:NH2	1:B:269:VAL:HG13	2.25	0.52
1:C:397:ILE:O	1:C:397:ILE:HD12	2.09	0.52
1:C:591:PHE:CE1	1:C:604:LEU:HD13	2.44	0.52
1:A:551:VAL:HG12	1:A:580:VAL:HG13	1.91	0.52
1:A:716:ALA:HA	1:A:723:GLU:CG	2.40	0.52
1:B:515:VAL:HG21	1:B:523:ILE:HD11	1.91	0.52
1:A:319:THR:HG22	1:A:389:GLY:N	2.24	0.52
1:A:212:PRO:HA	1:A:238:GLN:O	2.10	0.51
1:C:504:VAL:HG13	1:C:581:MET:HE3	1.92	0.51
1:C:101:VAL:HG21	1:C:134:PHE:CZ	2.46	0.51
1:C:520:ILE:HD13	1:C:521:ASP:N	2.25	0.51
1:A:598:VAL:CG1	1:A:678:VAL:HG22	2.40	0.51
1:C:225:TYR:HD1	1:C:231:MET:HE2	1.74	0.51
1:C:83:LEU:HD13	1:C:92:ILE:HG23	1.92	0.51
1:B:511:VAL:HG21	1:B:576:LEU:HD22	1.93	0.51
1:A:520:ILE:HD13	1:A:521:ASP:N	2.26	0.51
1:A:688:ASP:N	1:A:769:ILE:HD11	2.26	0.51
1:A:83:LEU:HD13	1:A:92:ILE:HG23	1.93	0.50
1:A:211:VAL:HG22	1:A:294:VAL:HG11	1.93	0.50
1:C:328:PHE:HD2	1:C:356:LEU:HD12	1.76	0.50
1:A:532:LEU:HD23	1:A:546:LEU:HD13	1.93	0.50
1:B:211:VAL:HG22	1:B:294:VAL:HG11	1.93	0.50
1:C:505:ALA:HB2	1:C:582:VAL:HA	1.93	0.50
1:C:231:MET:HE1	1:C:305:VAL:HG22	1.93	0.50
1:C:309:LEU:HD22	1:C:337:ILE:CD1	2.42	0.50
1:B:309:LEU:HD22	1:B:337:ILE:CD1	2.41	0.50
1:A:603:THR:HG21	1:B:607:SER:CB	2.42	0.50
1:A:257:LYS:HE3	2:E:2:NAG:H81	1.94	0.50
1:C:169:ARG:NH2	1:C:269:VAL:HG13	2.27	0.50
1:A:7:LEU:HD12	1:A:27:LYS:HE3	1.94	0.50
1:A:67:ARG:NH1	2:D:1:NAG:H81	2.26	0.50
1:A:328:PHE:HD2	1:A:356:LEU:HD12	1.77	0.50
1:B:7:LEU:HD12	1:B:27:LYS:HE3	1.93	0.50
1:A:309:LEU:HD22	1:A:337:ILE:CD1	2.41	0.49
1:B:42:ASP:OD1	1:B:44:THR:HG22	2.12	0.49
1:A:101:VAL:HG21	1:A:134:PHE:CZ	2.48	0.49

Continued on next page...

Continued from previous page...

Atom-1	Atom-2	Interatomic distance (Å)	Clash overlap (Å)
1:A:183:ARG:HG3	1:A:194:LEU:HD23	1.94	0.49
1:C:663:ASN:O	1:C:664:LEU:C	2.51	0.49
1:A:515:VAL:HG21	1:A:523:ILE:HD11	1.93	0.49
1:B:532:LEU:O	1:B:538:GLN:OE1	2.30	0.49
1:C:175:ASP:C	1:C:177:TYR:H	2.15	0.49
1:C:225:TYR:CD1	1:C:231:MET:HE2	2.46	0.49
1:A:327:VAL:HG22	1:A:357:ARG:CD	2.43	0.49
1:A:682:TRP:CD1	1:A:765:LEU:HD23	2.48	0.49
1:B:183:ARG:HG3	1:B:194:LEU:HD23	1.95	0.49
1:B:240:TYR:HA	1:B:241:PRO:C	2.32	0.49
1:C:505:ALA:CB	1:C:582:VAL:HA	2.43	0.49
1:A:753:TYR:CD2	1:A:771:ILE:HD12	2.48	0.49
1:B:101:VAL:HG21	1:B:134:PHE:CZ	2.47	0.49
1:B:532:LEU:O	1:B:532:LEU:HD12	2.13	0.49
1:A:689:LYS:O	1:A:771:ILE:HA	2.13	0.48
1:C:38:TRP:O	1:C:46:VAL:HG22	2.13	0.48
1:C:42:ASP:OD1	1:C:44:THR:HG22	2.13	0.48
1:C:632:ILE:HG23	1:C:646:ILE:HG12	1.93	0.48
1:B:663:ASN:O	1:B:664:LEU:C	2.51	0.48
1:A:42:ASP:OD1	1:A:44:THR:HG22	2.13	0.48
1:A:169:ARG:NH2	1:A:269:VAL:HG13	2.27	0.48
1:A:682:TRP:NE1	1:A:765:LEU:HD23	2.28	0.48
1:C:532:LEU:HD21	1:C:546:LEU:CD2	2.44	0.48
1:A:233:LEU:HD21	1:A:303:LEU:HD13	1.95	0.48
1:C:211:VAL:HG22	1:C:294:VAL:HG11	1.94	0.48
1:B:327:VAL:HG22	1:B:357:ARG:CD	2.44	0.48
1:B:615:LEU:HD13	1:B:640:ARG:HB2	1.94	0.48
1:C:327:VAL:HG22	1:C:357:ARG:CD	2.44	0.48
1:B:535:ASN:C	1:B:535:ASN:ND2	2.67	0.48
1:A:240:TYR:HA	1:A:241:PRO:C	2.34	0.47
1:C:532:LEU:HD21	1:C:546:LEU:HD22	1.95	0.47
1:A:214:VAL:HG13	1:A:297:GLU:HG2	1.95	0.47
1:A:632:ILE:HG23	1:A:646:ILE:HG12	1.96	0.47
1:A:686:PRO:HG2	1:A:769:ILE:HD13	1.96	0.47
1:B:92:ILE:HD11	1:B:343:MET:SD	2.54	0.47
1:C:363:LYS:HA	1:C:388:LEU:HD11	1.96	0.47
1:C:532:LEU:O	1:C:538:GLN:OE1	2.32	0.47
1:A:319:THR:CG2	1:A:389:GLY:O	2.62	0.47
1:A:761:ILE:CD1	1:A:761:ILE:N	2.78	0.47
1:B:532:LEU:HD23	1:B:546:LEU:HD13	1.95	0.47
1:B:214:VAL:HG13	1:B:297:GLU:HG2	1.97	0.47

Continued on next page...

Continued from previous page...

Atom-1	Atom-2	Interatomic distance (Å)	Clash overlap (Å)
1:B:632:ILE:HG23	1:B:646:ILE:HG12	1.95	0.47
1:C:7:LEU:HD12	1:C:27:LYS:HE3	1.94	0.47
1:A:319:THR:HG22	1:A:389:GLY:O	2.14	0.47
1:B:430:LEU:HD23	1:B:430:LEU:C	2.35	0.47
1:A:664:LEU:O	1:A:665:ALA:HB3	2.15	0.47
1:B:290:VAL:HG12	1:B:297:GLU:O	2.14	0.47
1:C:240:TYR:HA	1:C:241:PRO:C	2.35	0.47
1:A:551:VAL:HG12	1:A:580:VAL:CG1	2.45	0.47
1:A:733:ILE:HG12	1:A:742:VAL:HG13	1.96	0.47
1:B:418:ALA:HB2	1:B:426:ILE:HD11	1.97	0.47
1:B:457:LEU:HD12	1:B:457:LEU:C	2.35	0.47
1:B:365:ASP:O	1:B:386:LEU:HD23	2.15	0.47
1:B:469:LEU:HD11	1:B:484:SER:HB3	1.96	0.47
1:A:115:VAL:HG11	1:A:121:ALA:HB2	1.97	0.46
1:A:532:LEU:HD11	1:A:560:TYR:HE2	1.80	0.46
1:A:603:THR:HG21	1:B:607:SER:HB3	1.97	0.46
1:C:206:PRO:O	1:C:207:ILE:HD13	2.15	0.46
1:C:430:LEU:C	1:C:430:LEU:HD23	2.36	0.46
1:A:615:LEU:HD13	1:A:640:ARG:HB2	1.97	0.46
1:A:757:ALA:HB3	1:A:765:LEU:HB2	1.97	0.46
1:B:130:PHE:CD1	1:B:131:VAL:HG13	2.51	0.46
1:B:515:VAL:HG11	1:B:523:ILE:CD1	2.46	0.46
1:A:327:VAL:HG22	1:A:357:ARG:HD3	1.97	0.46
1:A:406:MET:SD	1:A:462:VAL:HG11	2.55	0.46
1:C:115:VAL:HG21	1:C:171:VAL:HG11	1.98	0.46
1:A:206:PRO:O	1:A:207:ILE:HD13	2.15	0.46
1:A:225:TYR:CD1	1:A:231:MET:HE2	2.49	0.46
1:A:567:GLN:O	1:A:568:GLU:HG3	2.15	0.46
1:A:591:PHE:CZ	1:A:674:LEU:HD12	2.51	0.46
1:C:613:LEU:CB	1:C:614:PRO:CD	2.94	0.46
1:C:621:LEU:HD23	1:C:622:ASP:N	2.31	0.46
1:B:225:TYR:HD1	1:B:231:MET:HE2	1.81	0.46
1:C:130:PHE:CD1	1:C:131:VAL:HG13	2.51	0.46
1:B:233:LEU:HD21	1:B:303:LEU:HD13	1.97	0.46
1:C:52:LEU:HD21	1:C:70:ASP:HB3	1.98	0.46
1:C:365:ASP:O	1:C:386:LEU:HD23	2.16	0.46
1:C:615:LEU:HD13	1:C:640:ARG:HB2	1.97	0.46
1:A:38:TRP:O	1:A:46:VAL:HG22	2.16	0.46
1:A:365:ASP:O	1:A:386:LEU:HD23	2.16	0.46
1:A:745:ILE:HD12	1:A:749:ASN:HD22	1.81	0.46
1:C:183:ARG:HG3	1:C:194:LEU:HD23	1.97	0.46

Continued on next page...

Continued from previous page...

Atom-1	Atom-2	Interatomic distance (Å)	Clash overlap (Å)
1:B:83:LEU:HD13	1:B:92:ILE:HG22	1.98	0.46
1:B:121:ALA:HB3	1:B:168:ILE:HB	1.98	0.46
1:C:532:LEU:HD11	1:C:560:TYR:CE2	2.51	0.46
1:A:557:GLN:HB2	1:A:580:VAL:HB	1.96	0.45
1:A:621:LEU:O	1:A:622:ASP:C	2.54	0.45
1:B:534:ILE:HD11	1:B:538:GLN:HE22	1.80	0.45
1:A:52:LEU:HD21	1:A:70:ASP:HB3	1.99	0.45
1:B:443:VAL:HG22	1:B:457:LEU:HD13	1.98	0.45
1:B:535:ASN:O	1:B:536:ARG:C	2.54	0.45
1:A:754:LEU:C	1:A:754:LEU:CD2	2.85	0.45
1:B:613:LEU:CB	1:B:614:PRO:CD	2.94	0.45
1:C:430:LEU:HD12	1:C:470:TYR:CE2	2.51	0.45
1:C:532:LEU:HD11	1:C:560:TYR:HE2	1.80	0.45
1:C:567:GLN:O	1:C:568:GLU:HG3	2.15	0.45
1:A:586:ILE:HD11	1:A:606:CYS:SG	2.57	0.45
1:A:613:LEU:CB	1:A:614:PRO:CD	2.94	0.45
1:B:535:ASN:ND2	1:B:535:ASN:O	2.49	0.45
1:A:621:LEU:HD23	1:A:622:ASP:N	2.32	0.45
1:C:233:LEU:HD21	1:C:303:LEU:HD13	1.97	0.45
1:C:327:VAL:HG22	1:C:357:ARG:HD3	1.99	0.45
1:A:443:VAL:HG22	1:A:457:LEU:HD13	1.98	0.45
1:C:92:ILE:HD11	1:C:343:MET:SD	2.57	0.45
1:C:621:LEU:O	1:C:622:ASP:C	2.55	0.45
1:A:231:MET:CE	1:A:303:LEU:HD21	2.47	0.45
1:A:430:LEU:C	1:A:430:LEU:HD23	2.37	0.45
1:B:327:VAL:HG22	1:B:357:ARG:HD3	1.99	0.45
1:B:591:PHE:CZ	1:B:674:LEU:HD12	2.51	0.45
1:C:214:VAL:HG13	1:C:297:GLU:HG2	1.99	0.45
1:C:539:LYS:HB2	1:C:547:ILE:HG23	1.99	0.45
1:A:707:PRO:HD2	1:A:761:ILE:HD11	1.99	0.45
1:B:290:VAL:HG13	1:B:290:VAL:O	2.17	0.45
1:A:518:TYR:O	1:A:518:TYR:CD1	2.69	0.45
1:A:663:ASN:O	1:A:664:LEU:C	2.55	0.45
1:B:52:LEU:HD21	1:B:70:ASP:HB3	1.98	0.45
1:B:309:LEU:HD11	1:B:375:ASN:ND2	2.32	0.44
1:A:539:LYS:HB2	1:A:547:ILE:HG23	1.99	0.44
1:C:373:VAL:CG2	1:C:380:ALA:HB3	2.44	0.44
1:C:418:ALA:HB2	1:C:426:ILE:HD11	2.00	0.44
1:A:130:PHE:CD1	1:A:131:VAL:HG13	2.52	0.44
1:B:116:ILE:O	1:B:117:ARG:C	2.55	0.44
1:C:469:LEU:HD11	1:C:484:SER:HB3	2.00	0.44

Continued on next page...

Continued from previous page...

Atom-1	Atom-2	Interatomic distance (Å)	Clash overlap (Å)
1:A:115:VAL:HG21	1:A:171:VAL:HG11	1.99	0.44
1:A:319:THR:HG22	1:A:389:GLY:HA2	1.98	0.44
1:A:518:TYR:C	1:A:520:ILE:H	2.20	0.44
1:B:231:MET:CE	1:B:303:LEU:HD21	2.47	0.44
1:B:664:LEU:O	1:B:665:ALA:HB3	2.17	0.44
1:A:24:ILE:HD11	1:A:61:LEU:HD23	2.00	0.44
1:A:551:VAL:CG1	1:A:580:VAL:HG13	2.48	0.44
1:A:119:ASN:N	1:A:119:ASN:HD22	2.16	0.44
1:A:184:THR:O	1:A:192:THR:HA	2.18	0.44
1:A:469:LEU:HD11	1:A:484:SER:HB3	1.99	0.44
1:B:119:ASN:HD22	1:B:119:ASN:N	2.16	0.44
1:B:621:LEU:HD23	1:B:622:ASP:N	2.33	0.44
1:A:319:THR:HG23	1:A:387:LYS:HB3	2.00	0.44
1:C:184:THR:O	1:C:192:THR:HA	2.18	0.43
1:C:219:LYS:HA	1:C:299:VAL:HG12	2.00	0.43
1:C:417:VAL:CG2	1:C:454:VAL:HG22	2.42	0.43
1:C:115:VAL:HG11	1:C:121:ALA:HB2	2.00	0.43
1:A:598:VAL:HG11	1:A:678:VAL:HG22	2.01	0.43
1:C:24:ILE:HD11	1:C:61:LEU:HD23	2.00	0.43
1:C:515:VAL:HG21	1:C:523:ILE:HD11	1.99	0.43
1:B:184:THR:O	1:B:192:THR:HA	2.18	0.43
1:C:363:LYS:HA	1:C:388:LEU:CD1	2.48	0.43
1:A:159:LEU:HD12	1:A:160:VAL:N	2.34	0.43
1:A:418:ALA:HB2	1:A:426:ILE:HD11	1.99	0.43
1:A:507:GLU:O	1:A:551:VAL:HG23	2.19	0.43
1:B:621:LEU:O	1:B:622:ASP:C	2.55	0.43
1:C:309:LEU:HD11	1:C:375:ASN:ND2	2.34	0.43
1:A:92:ILE:HD11	1:A:343:MET:SD	2.58	0.42
1:B:219:LYS:HA	1:B:299:VAL:HG12	2.00	0.42
1:B:586:ILE:HD11	1:B:606:CYS:SG	2.58	0.42
1:B:632:ILE:HG22	1:B:644:LEU:HD11	2.00	0.42
1:C:83:LEU:HD13	1:C:92:ILE:HG22	2.01	0.42
1:C:231:MET:CE	1:C:303:LEU:HD21	2.49	0.42
1:C:319:THR:HG22	1:C:389:GLY:CA	2.49	0.42
1:C:664:LEU:O	1:C:665:ALA:HB3	2.19	0.42
1:A:147:ASN:HD22	1:A:147:ASN:N	2.17	0.42
1:A:290:VAL:HG12	1:A:297:GLU:O	2.19	0.42
1:A:258:GLN:HE21	1:A:710:GLN:CD	2.22	0.42
1:B:225:TYR:CD1	1:B:231:MET:HE2	2.54	0.42
1:C:443:VAL:HG22	1:C:457:LEU:HD13	2.01	0.42
1:A:319:THR:HG23	1:A:387:LYS:CB	2.49	0.42

Continued on next page...

Continued from previous page...

Atom-1	Atom-2	Interatomic distance (Å)	Clash overlap (Å)
1:A:418:ALA:HB3	1:A:426:ILE:HD11	2.02	0.42
1:B:233:LEU:O	1:B:272:THR:HG23	2.20	0.42
1:B:518:TYR:C	1:B:520:ILE:H	2.22	0.42
1:A:478:VAL:HG22	1:A:478:VAL:O	2.19	0.42
1:B:373:VAL:CG2	1:B:380:ALA:HB3	2.44	0.42
1:B:507:GLU:O	1:B:551:VAL:HG23	2.19	0.42
1:C:632:ILE:HG22	1:C:644:LEU:HD11	2.00	0.42
1:B:159:LEU:HD12	1:B:160:VAL:N	2.35	0.42
1:C:119:ASN:N	1:C:119:ASN:HD22	2.17	0.42
1:C:290:VAL:HG13	1:C:290:VAL:O	2.20	0.42
1:A:424:PRO:O	1:A:453:VAL:HG21	2.19	0.42
1:B:231:MET:HE2	1:B:303:LEU:HD11	2.01	0.42
1:B:424:PRO:O	1:B:453:VAL:HG21	2.19	0.42
1:A:390:GLY:C	1:A:392:PHE:N	2.72	0.42
1:B:115:VAL:HG21	1:B:171:VAL:HG11	2.02	0.42
1:C:147:ASN:HD22	1:C:147:ASN:N	2.18	0.42
1:C:168:ILE:CD1	1:C:201:LEU:HD11	2.49	0.42
1:C:290:VAL:HG12	1:C:297:GLU:O	2.19	0.42
1:A:16:PHE:CG	1:A:22:ALA:HB2	2.55	0.41
1:A:128:PRO:HB2	1:A:131:VAL:HG22	2.02	0.41
1:A:231:MET:HE2	1:A:303:LEU:HD11	2.01	0.41
1:A:515:VAL:HG11	1:A:523:ILE:CD1	2.50	0.41
1:B:539:LYS:HB2	1:B:547:ILE:HG23	2.02	0.41
1:C:159:LEU:HD12	1:C:160:VAL:N	2.35	0.41
1:C:518:TYR:C	1:C:520:ILE:H	2.24	0.41
1:A:116:ILE:O	1:A:117:ARG:C	2.59	0.41
1:A:221:ASP:HB2	1:B:217:LEU:HG	2.02	0.41
1:A:707:PRO:HD3	1:A:761:ILE:HD11	2.02	0.41
1:B:16:PHE:CG	1:B:22:ALA:HB2	2.54	0.41
1:C:16:PHE:CG	1:C:22:ALA:HB2	2.56	0.41
1:C:457:LEU:HD12	1:C:457:LEU:C	2.40	0.41
1:A:258:GLN:NE2	1:A:710:GLN:OE1	2.53	0.41
1:C:101:VAL:HG21	1:C:134:PHE:CE2	2.55	0.41
1:C:138:VAL:HG21	1:C:185:LYS:HB2	2.02	0.41
1:A:463:HIS:O	1:A:489:VAL:HG11	2.20	0.41
1:B:551:VAL:CG1	1:B:580:VAL:HG22	2.50	0.41
1:C:406:MET:SD	1:C:462:VAL:HG11	2.60	0.41
1:A:754:LEU:HD23	1:A:767:ALA:O	2.20	0.41
1:B:19:SER:OG	2:F:1:NAG:N2	2.54	0.41
1:A:219:LYS:HA	1:A:299:VAL:HG12	2.02	0.41
1:A:290:VAL:HG13	1:A:290:VAL:O	2.20	0.41

Continued on next page...

Continued from previous page...

Atom-1	Atom-2	Interatomic distance (Å)	Clash overlap (Å)
1:A:423:THR:HA	1:A:424:PRO:HD3	1.96	0.41
1:B:14:ILE:HD13	1:B:14:ILE:HA	1.97	0.41
1:B:233:LEU:HD12	1:B:273:LEU:HD23	2.03	0.41
1:B:403:GLU:HG3	1:B:404:GLU:N	2.36	0.41
1:B:532:LEU:HD21	1:B:546:LEU:CD2	2.51	0.41
1:C:39:ILE:HG13	1:C:81:ALA:HB3	2.02	0.41
1:C:478:VAL:HG22	1:C:478:VAL:O	2.20	0.41
1:A:727:LEU:HD23	1:A:733:ILE:HG21	2.03	0.41
1:C:322:PHE:CB	1:C:478:VAL:HG22	2.51	0.41
1:A:83:LEU:HD13	1:A:92:ILE:HG22	2.02	0.40
1:A:142:THR:HG22	1:A:180:TYR:HD1	1.86	0.40
1:C:322:PHE:HB3	1:C:478:VAL:HG22	2.02	0.40
1:C:424:PRO:O	1:C:453:VAL:HG21	2.22	0.40
1:A:417:VAL:CG2	1:A:454:VAL:HG22	2.45	0.40
1:B:478:VAL:O	1:B:478:VAL:HG22	2.21	0.40
1:C:518:TYR:O	1:C:518:TYR:CG	2.74	0.40
1:A:309:LEU:HD23	1:A:334:GLY:HA3	2.04	0.40
1:A:716:ALA:HA	1:A:723:GLU:HG3	2.03	0.40
1:A:752:TYR:HA	1:A:769:ILE:O	2.21	0.40
1:A:39:ILE:HG13	1:A:81:ALA:HB3	2.03	0.40
1:A:373:VAL:CG2	1:A:380:ALA:HB3	2.45	0.40
1:C:233:LEU:O	1:C:272:THR:HG23	2.20	0.40
1:C:403:GLU:HG3	1:C:404:GLU:N	2.35	0.40
1:B:147:ASN:HD22	1:B:147:ASN:N	2.17	0.40
1:B:251:ILE:O	1:B:252:GLU:C	2.60	0.40
1:B:430:LEU:HD12	1:B:470:TYR:CE2	2.57	0.40
3:J:1:NAG:O3	3:J:2:NAG:O5	2.33	0.40

All (1) symmetry-related close contacts are listed below. The label for Atom-2 includes the symmetry operator and encoded unit-cell translations to be applied.

Atom-1	Atom-2	Interatomic distance (Å)	Clash overlap (Å)
1:B:492:LEU:N	1:C:407:GLU:OE1[8_455]	2.04	0.16

5.3 Torsion angles [i](#)

5.3.1 Protein backbone [i](#)

In the following table, the Percentiles column shows the percent Ramachandran outliers of the chain as a percentile score with respect to all X-ray entries followed by that with respect to entries

of similar resolution.

The Analysed column shows the number of residues for which the backbone conformation was analysed, and the total number of residues.

Mol	Chain	Analysed	Favoured	Allowed	Outliers	Percentiles	
1	A	773/816 (95%)	696 (90%)	64 (8%)	13 (2%)	9	44
1	B	674/816 (83%)	605 (90%)	56 (8%)	13 (2%)	8	41
1	C	674/816 (83%)	600 (89%)	62 (9%)	12 (2%)	8	42
All	All	2121/2448 (87%)	1901 (90%)	182 (9%)	38 (2%)	8	42

All (38) Ramachandran outliers are listed below:

Mol	Chain	Res	Type
1	A	613	LEU
1	A	626	ILE
1	B	613	LEU
1	B	626	ILE
1	C	613	LEU
1	C	626	ILE
1	A	216	SER
1	A	638	GLY
1	A	724	TYR
1	B	216	SER
1	B	392	PHE
1	B	638	GLY
1	C	216	SER
1	C	638	GLY
1	A	103	ALA
1	A	174	GLU
1	A	252	GLU
1	A	622	ASP
1	A	664	LEU
1	B	103	ALA
1	B	252	GLU
1	B	622	ASP
1	B	664	LEU
1	C	103	ALA
1	C	174	GLU
1	C	252	GLU
1	C	593	GLU
1	C	622	ASP
1	C	664	LEU
1	A	744	ASN

Continued on next page...

Continued from previous page...

Mol	Chain	Res	Type
1	B	174	GLU
1	B	464	ALA
1	B	612	ASP
1	C	612	ASP
1	A	464	ALA
1	A	553	ARG
1	B	553	ARG
1	C	553	ARG

5.3.2 Protein sidechains [i](#)

In the following table, the Percentiles column shows the percent sidechain outliers of the chain as a percentile score with respect to all X-ray entries followed by that with respect to entries of similar resolution.

The Analysed column shows the number of residues for which the sidechain conformation was analysed, and the total number of residues.

Mol	Chain	Analysed	Rotameric	Outliers	Percentiles	
1	A	654/687 (95%)	625 (96%)	29 (4%)	28	54
1	B	572/687 (83%)	548 (96%)	24 (4%)	30	55
1	C	572/687 (83%)	548 (96%)	24 (4%)	30	55
All	All	1798/2061 (87%)	1721 (96%)	77 (4%)	29	55

All (77) residues with a non-rotameric sidechain are listed below:

Mol	Chain	Res	Type
1	A	11	THR
1	A	13	ARG
1	A	31	ASN
1	A	88	PHE
1	A	147	ASN
1	A	163	SER
1	A	175	ASP
1	A	195	SER
1	A	221	ASP
1	A	319	THR
1	A	339	THR
1	A	374	ARG
1	A	393	ASP
1	A	440	ARG

Continued on next page...

Continued from previous page...

Mol	Chain	Res	Type
1	A	463	HIS
1	A	509	LEU
1	A	510	ILE
1	A	520	ILE
1	A	522	SER
1	A	535	ASN
1	A	536	ARG
1	A	549	GLU
1	A	554	ASN
1	A	556	ASP
1	A	663	ASN
1	A	710	GLN
1	A	754	LEU
1	A	755	CYS
1	A	761	ILE
1	B	11	THR
1	B	13	ARG
1	B	31	ASN
1	B	88	PHE
1	B	147	ASN
1	B	175	ASP
1	B	195	SER
1	B	221	ASP
1	B	319	THR
1	B	339	THR
1	B	374	ARG
1	B	393	ASP
1	B	440	ARG
1	B	463	HIS
1	B	509	LEU
1	B	510	ILE
1	B	520	ILE
1	B	522	SER
1	B	535	ASN
1	B	536	ARG
1	B	549	GLU
1	B	554	ASN
1	B	556	ASP
1	B	663	ASN
1	C	11	THR
1	C	13	ARG
1	C	31	ASN

Continued on next page...

Continued from previous page...

Mol	Chain	Res	Type
1	C	88	PHE
1	C	147	ASN
1	C	175	ASP
1	C	195	SER
1	C	221	ASP
1	C	319	THR
1	C	339	THR
1	C	374	ARG
1	C	393	ASP
1	C	440	ARG
1	C	463	HIS
1	C	509	LEU
1	C	510	ILE
1	C	520	ILE
1	C	522	SER
1	C	535	ASN
1	C	536	ARG
1	C	549	GLU
1	C	554	ASN
1	C	556	ASP
1	C	663	ASN

Sometimes sidechains can be flipped to improve hydrogen bonding and reduce clashes. All (18) such sidechains are listed below:

Mol	Chain	Res	Type
1	A	31	ASN
1	A	147	ASN
1	A	258	GLN
1	A	402	GLN
1	A	554	ASN
1	A	732	ASN
1	B	31	ASN
1	B	147	ASN
1	B	402	GLN
1	B	535	ASN
1	B	554	ASN
1	B	579	GLN
1	C	31	ASN
1	C	147	ASN
1	C	167	HIS
1	C	402	GLN
1	C	554	ASN

Continued on next page...

Continued from previous page...

Mol	Chain	Res	Type
1	C	579	GLN

5.3.3 RNA [i](#)

There are no RNA molecules in this entry.

5.4 Non-standard residues in protein, DNA, RNA chains [i](#)

There are no non-standard protein/DNA/RNA residues in this entry.

5.5 Carbohydrates [i](#)

20 monosaccharides are modelled in this entry.

In the following table, the Counts columns list the number of bonds (or angles) for which Mogul statistics could be retrieved, the number of bonds (or angles) that are observed in the model and the number of bonds (or angles) that are defined in the Chemical Component Dictionary. The Link column lists molecule types, if any, to which the group is linked. The Z score for a bond length (or angle) is the number of standard deviations the observed value is removed from the expected value. A bond length (or angle) with $|Z| > 2$ is considered an outlier worth inspection. RMSZ is the root-mean-square of all Z scores of the bond lengths (or angles).

Mol	Type	Chain	Res	Link	Bond lengths			Bond angles		
					Counts	RMSZ	# Z > 2	Counts	RMSZ	# Z > 2
2	NAG	D	1	2,1	14,14,15	0.42	0	17,19,21	1.52	2 (11%)
2	NAG	D	2	2	14,14,15	0.51	0	17,19,21	0.82	0
2	NAG	E	1	2,1	14,14,15	0.65	0	17,19,21	1.75	3 (17%)
2	NAG	E	2	2	14,14,15	0.50	0	17,19,21	0.92	1 (5%)
2	NAG	F	1	2,1	14,14,15	0.59	0	17,19,21	1.28	1 (5%)
2	NAG	F	2	2	14,14,15	0.77	0	17,19,21	1.19	1 (5%)
3	NAG	G	1	3,1	14,14,15	0.55	0	17,19,21	1.25	2 (11%)
3	NAG	G	2	3	14,14,15	0.47	0	17,19,21	1.20	2 (11%)
3	NAG	G	3	3	14,14,15	0.57	0	17,19,21	0.81	0
3	NAG	H	1	3,1	14,14,15	0.79	0	17,19,21	2.01	5 (29%)
3	NAG	H	2	3	14,14,15	0.72	0	17,19,21	1.51	4 (23%)
3	NAG	H	3	3	14,14,15	0.56	0	17,19,21	0.77	0
2	NAG	I	1	2,1	14,14,15	0.77	1 (7%)	17,19,21	1.41	2 (11%)
2	NAG	I	2	2	14,14,15	0.59	0	17,19,21	0.91	0
3	NAG	J	1	3,1	14,14,15	0.33	0	17,19,21	1.60	2 (11%)

Mol	Type	Chain	Res	Link	Bond lengths			Bond angles		
					Counts	RMSZ	# Z > 2	Counts	RMSZ	# Z > 2
3	NAG	J	2	3	14,14,15	0.58	0	17,19,21	0.88	0
3	NAG	J	3	3	14,14,15	0.52	0	17,19,21	0.84	0
3	NAG	K	1	3,1	14,14,15	0.43	0	17,19,21	1.41	2 (11%)
3	NAG	K	2	3	14,14,15	0.61	0	17,19,21	1.13	1 (5%)
3	NAG	K	3	3	14,14,15	0.65	0	17,19,21	1.04	1 (5%)

In the following table, the Chirals column lists the number of chiral outliers, the number of chiral centers analysed, the number of these observed in the model and the number defined in the Chemical Component Dictionary. Similar counts are reported in the Torsion and Rings columns. '-' means no outliers of that kind were identified.

Mol	Type	Chain	Res	Link	Chirals	Torsions	Rings
2	NAG	D	1	2,1	-	2/6/23/26	0/1/1/1
2	NAG	D	2	2	-	2/6/23/26	0/1/1/1
2	NAG	E	1	2,1	-	2/6/23/26	0/1/1/1
2	NAG	E	2	2	-	2/6/23/26	0/1/1/1
2	NAG	F	1	2,1	-	2/6/23/26	0/1/1/1
2	NAG	F	2	2	-	4/6/23/26	0/1/1/1
3	NAG	G	1	3,1	1/1/5/7	4/6/23/26	0/1/1/1
3	NAG	G	2	3	-	4/6/23/26	0/1/1/1
3	NAG	G	3	3	-	4/6/23/26	0/1/1/1
3	NAG	H	1	3,1	1/1/5/7	2/6/23/26	0/1/1/1
3	NAG	H	2	3	-	4/6/23/26	0/1/1/1
3	NAG	H	3	3	-	3/6/23/26	0/1/1/1
2	NAG	I	1	2,1	-	4/6/23/26	0/1/1/1
2	NAG	I	2	2	-	3/6/23/26	0/1/1/1
3	NAG	J	1	3,1	-	4/6/23/26	0/1/1/1
3	NAG	J	2	3	-	2/6/23/26	0/1/1/1
3	NAG	J	3	3	-	2/6/23/26	0/1/1/1
3	NAG	K	1	3,1	1/1/5/7	4/6/23/26	0/1/1/1
3	NAG	K	2	3	-	2/6/23/26	0/1/1/1
3	NAG	K	3	3	-	3/6/23/26	0/1/1/1

All (1) bond length outliers are listed below:

Mol	Chain	Res	Type	Atoms	Z	Observed(Å)	Ideal(Å)
2	I	1	NAG	C1-C2	2.02	1.55	1.52

All (29) bond angle outliers are listed below:

Mol	Chain	Res	Type	Atoms	Z	Observed(°)	Ideal(°)
2	E	1	NAG	O5-C1-C2	-5.28	102.95	111.29
3	J	1	NAG	C1-O5-C5	4.73	118.61	112.19
3	H	1	NAG	C4-C3-C2	4.71	117.92	111.02
2	I	1	NAG	C4-C3-C2	4.37	117.42	111.02
2	D	1	NAG	O5-C1-C2	-4.29	104.51	111.29
2	F	1	NAG	O5-C1-C2	-4.25	104.58	111.29
3	H	2	NAG	C4-C3-C2	4.12	117.05	111.02
3	K	1	NAG	C1-O5-C5	3.79	117.32	112.19
3	K	1	NAG	O5-C1-C2	-3.70	105.44	111.29
3	H	1	NAG	C2-N2-C7	3.59	128.02	122.90
3	K	2	NAG	C4-C3-C2	3.48	116.12	111.02
2	F	2	NAG	C4-C3-C2	3.46	116.09	111.02
3	H	1	NAG	C3-C4-C5	3.42	116.33	110.24
3	J	1	NAG	C4-C3-C2	-3.37	106.08	111.02
2	D	1	NAG	C1-O5-C5	3.31	116.68	112.19
2	E	1	NAG	C1-C2-N2	3.03	115.66	110.49
3	G	1	NAG	C1-O5-C5	2.93	116.17	112.19
3	G	2	NAG	C2-N2-C7	-2.91	118.75	122.90
3	G	2	NAG	O5-C1-C2	-2.83	106.82	111.29
3	H	2	NAG	C1-O5-C5	-2.63	108.64	112.19
3	G	1	NAG	C1-C2-N2	2.32	114.45	110.49
3	H	1	NAG	O5-C5-C6	2.31	110.83	107.20
2	I	1	NAG	O5-C1-C2	-2.27	107.70	111.29
2	E	1	NAG	C1-O5-C5	2.12	115.06	112.19
3	H	1	NAG	O7-C7-N2	2.10	125.81	121.95
3	H	2	NAG	O5-C5-C6	2.05	110.42	107.20
3	K	3	NAG	C4-C3-C2	2.05	114.02	111.02
2	E	2	NAG	C1-O5-C5	2.03	114.94	112.19
3	H	2	NAG	C1-C2-N2	-2.02	107.04	110.49

All (3) chirality outliers are listed below:

Mol	Chain	Res	Type	Atom
3	G	1	NAG	C1
3	H	1	NAG	C1
3	K	1	NAG	C1

All (59) torsion outliers are listed below:

Mol	Chain	Res	Type	Atoms
2	D	1	NAG	C8-C7-N2-C2

Continued on next page...

Continued from previous page...

Mol	Chain	Res	Type	Atoms
2	D	1	NAG	O7-C7-N2-C2
2	D	2	NAG	C8-C7-N2-C2
2	D	2	NAG	O7-C7-N2-C2
2	E	1	NAG	C8-C7-N2-C2
2	E	1	NAG	O7-C7-N2-C2
2	E	2	NAG	C8-C7-N2-C2
2	E	2	NAG	O7-C7-N2-C2
2	F	1	NAG	C8-C7-N2-C2
2	F	1	NAG	O7-C7-N2-C2
2	F	2	NAG	C8-C7-N2-C2
2	F	2	NAG	O7-C7-N2-C2
2	I	1	NAG	C8-C7-N2-C2
2	I	1	NAG	O7-C7-N2-C2
2	I	2	NAG	C8-C7-N2-C2
2	I	2	NAG	O7-C7-N2-C2
3	G	2	NAG	C8-C7-N2-C2
3	G	2	NAG	O7-C7-N2-C2
3	G	3	NAG	C8-C7-N2-C2
3	G	3	NAG	O7-C7-N2-C2
3	H	3	NAG	C8-C7-N2-C2
3	H	3	NAG	O7-C7-N2-C2
3	J	1	NAG	C8-C7-N2-C2
3	J	1	NAG	O7-C7-N2-C2
3	J	3	NAG	C8-C7-N2-C2
3	J	3	NAG	O7-C7-N2-C2
3	K	1	NAG	C8-C7-N2-C2
3	K	1	NAG	O7-C7-N2-C2
3	K	2	NAG	C8-C7-N2-C2
3	K	2	NAG	O7-C7-N2-C2
3	H	2	NAG	C8-C7-N2-C2
3	H	2	NAG	O7-C7-N2-C2
3	J	2	NAG	C8-C7-N2-C2
3	J	2	NAG	O7-C7-N2-C2
3	H	2	NAG	O5-C5-C6-O6
2	I	1	NAG	O5-C5-C6-O6
2	F	2	NAG	O5-C5-C6-O6
3	J	1	NAG	O5-C5-C6-O6
3	G	3	NAG	O5-C5-C6-O6
3	K	1	NAG	O5-C5-C6-O6
3	H	2	NAG	C4-C5-C6-O6
2	I	1	NAG	C4-C5-C6-O6
3	G	2	NAG	C4-C5-C6-O6

Continued on next page...

Continued from previous page...

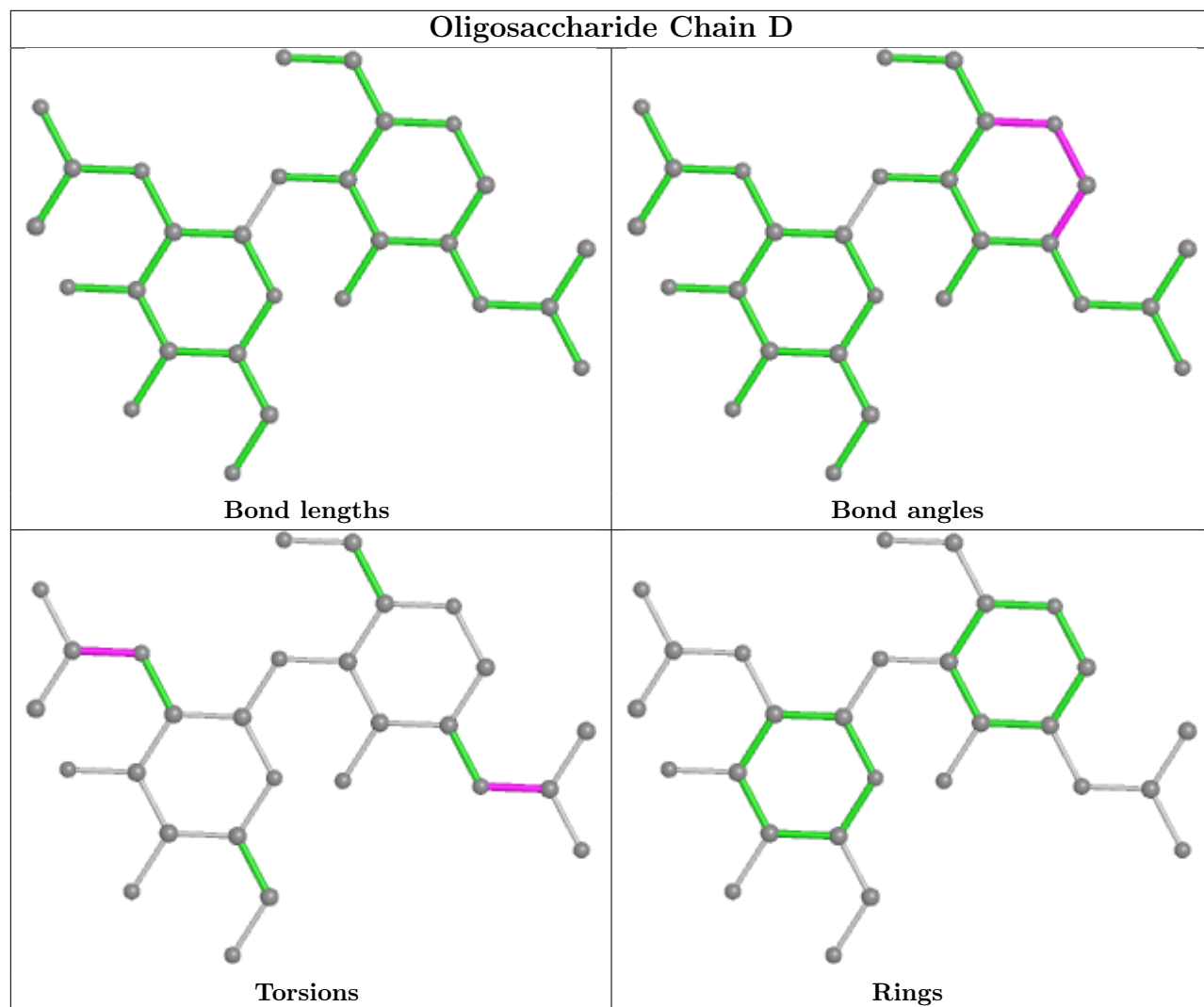
Mol	Chain	Res	Type	Atoms
2	F	2	NAG	C4-C5-C6-O6
3	G	1	NAG	C8-C7-N2-C2
3	G	1	NAG	C1-C2-N2-C7
3	K	1	NAG	C4-C5-C6-O6
3	H	1	NAG	O5-C5-C6-O6
3	G	1	NAG	O7-C7-N2-C2
3	G	2	NAG	O5-C5-C6-O6
3	G	3	NAG	C4-C5-C6-O6
3	J	1	NAG	C4-C5-C6-O6
3	K	3	NAG	C4-C5-C6-O6
3	H	3	NAG	O5-C5-C6-O6
2	I	2	NAG	O5-C5-C6-O6
3	K	3	NAG	O5-C5-C6-O6
3	G	1	NAG	O5-C5-C6-O6
3	K	3	NAG	C1-C2-N2-C7
3	H	1	NAG	C1-C2-N2-C7

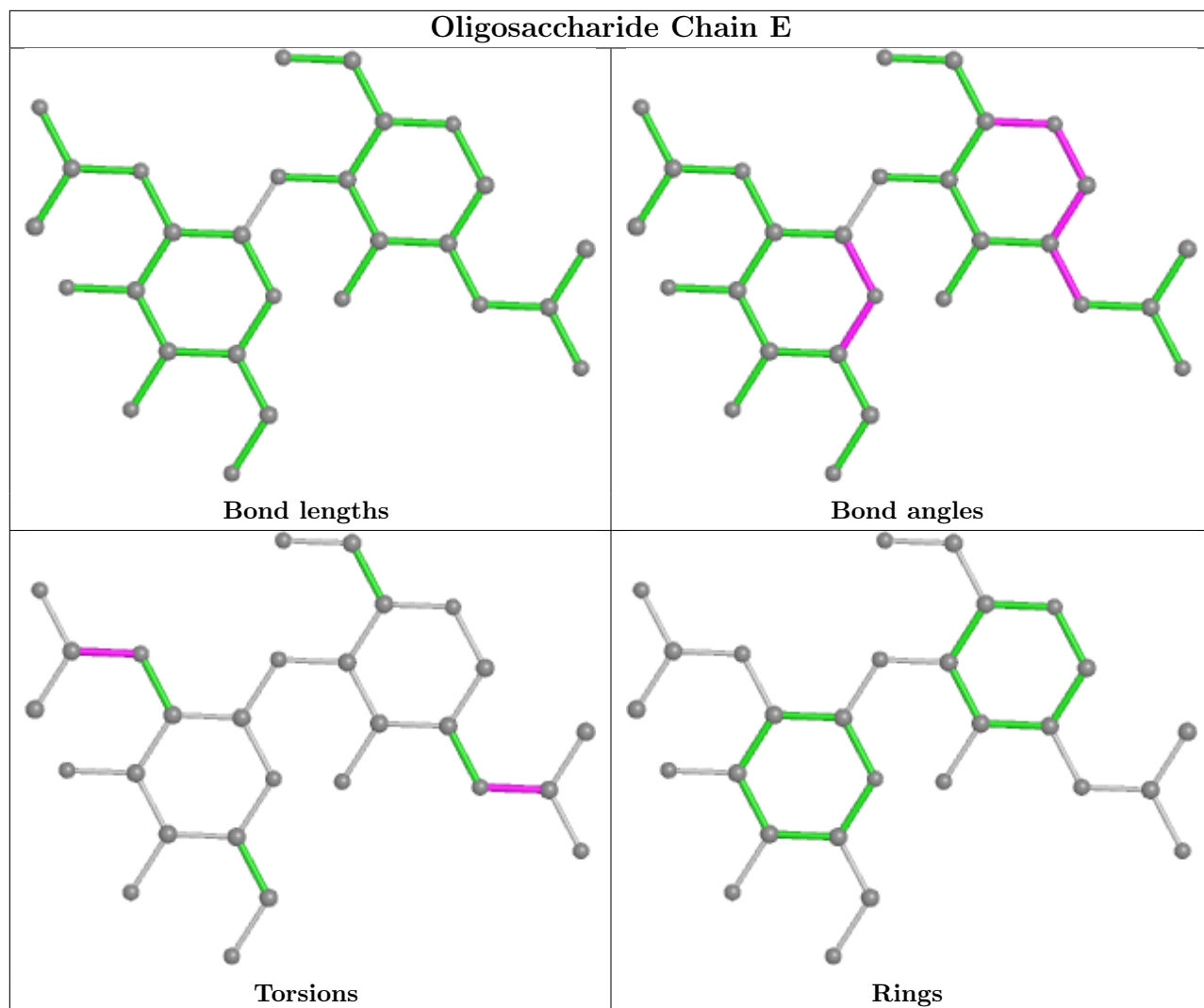
There are no ring outliers.

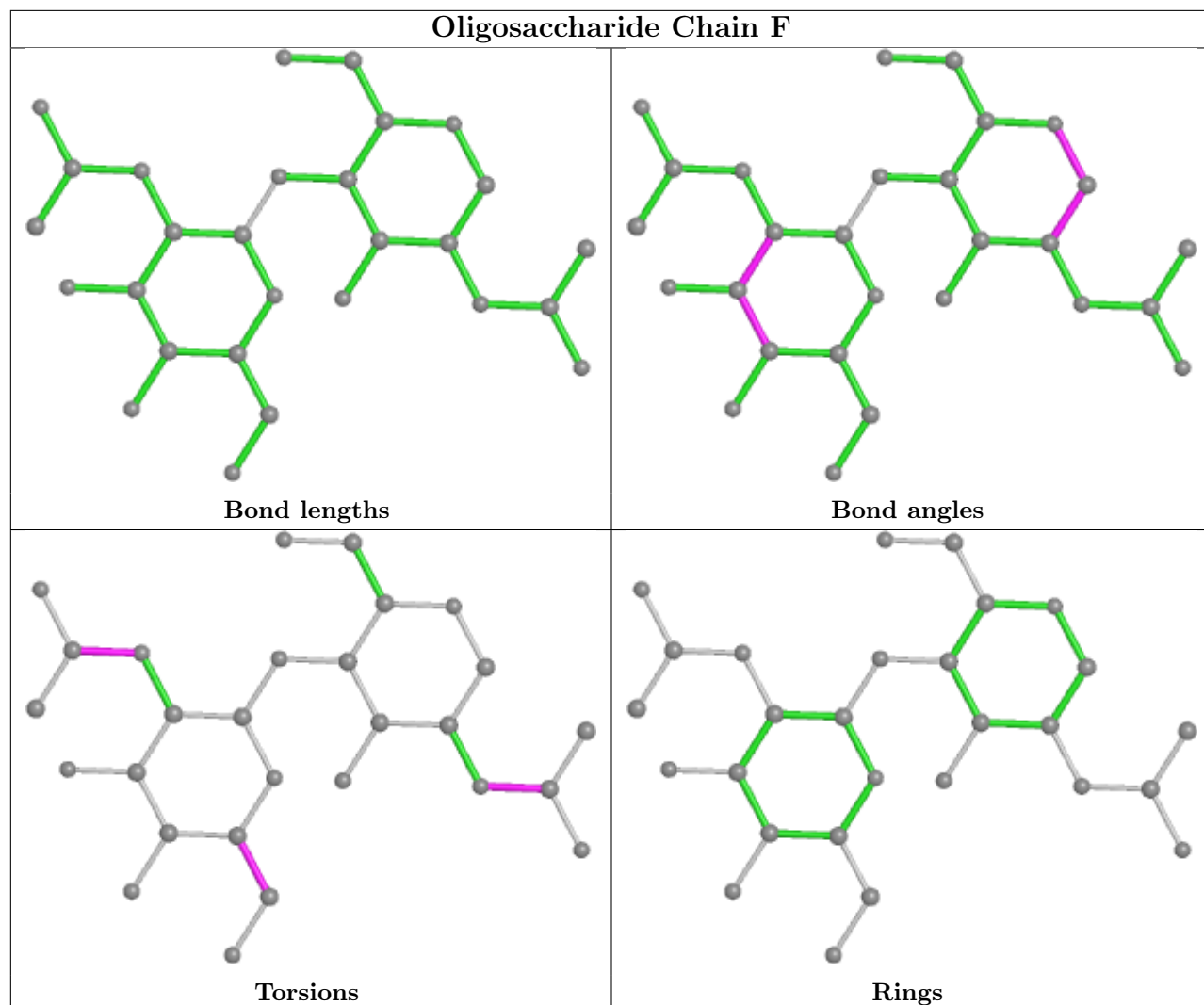
5 monomers are involved in 5 short contacts:

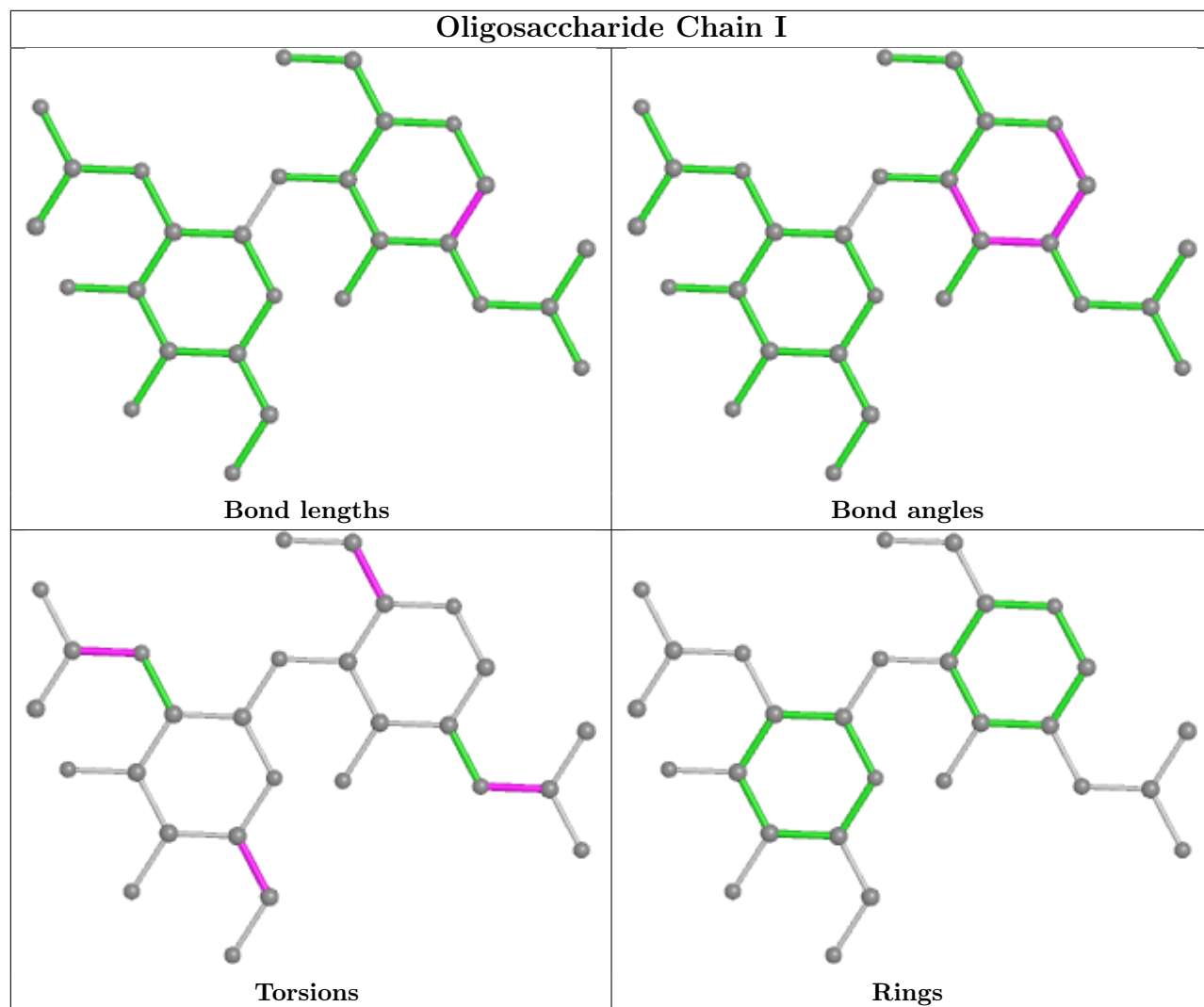
Mol	Chain	Res	Type	Clashes	Symm-Clashes
2	D	1	NAG	2	0
3	J	1	NAG	1	0
2	E	2	NAG	1	0
3	J	2	NAG	1	0
2	F	1	NAG	1	0

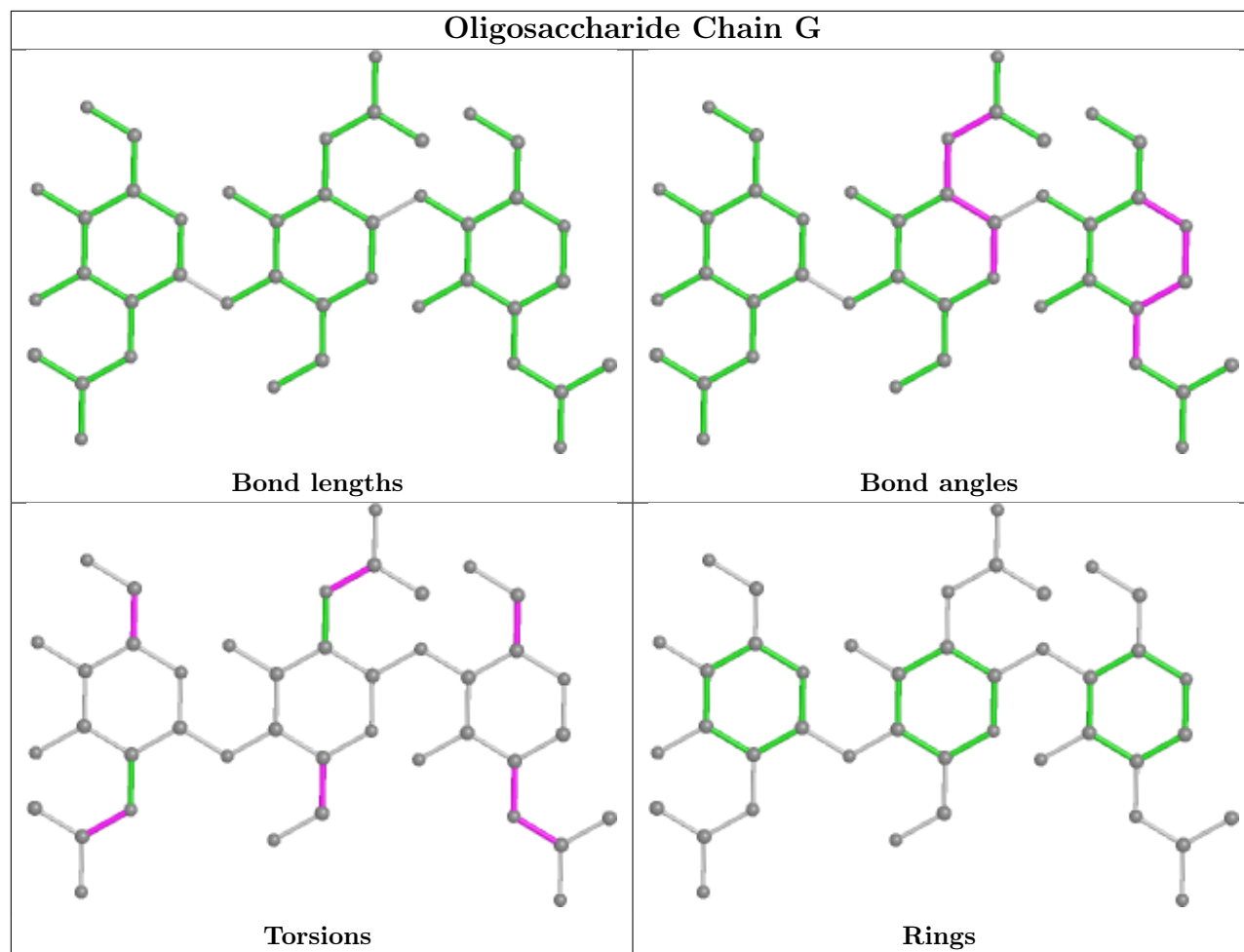
The following is a two-dimensional graphical depiction of Mogul quality analysis of bond lengths, bond angles, torsion angles, and ring geometry for oligosaccharide.

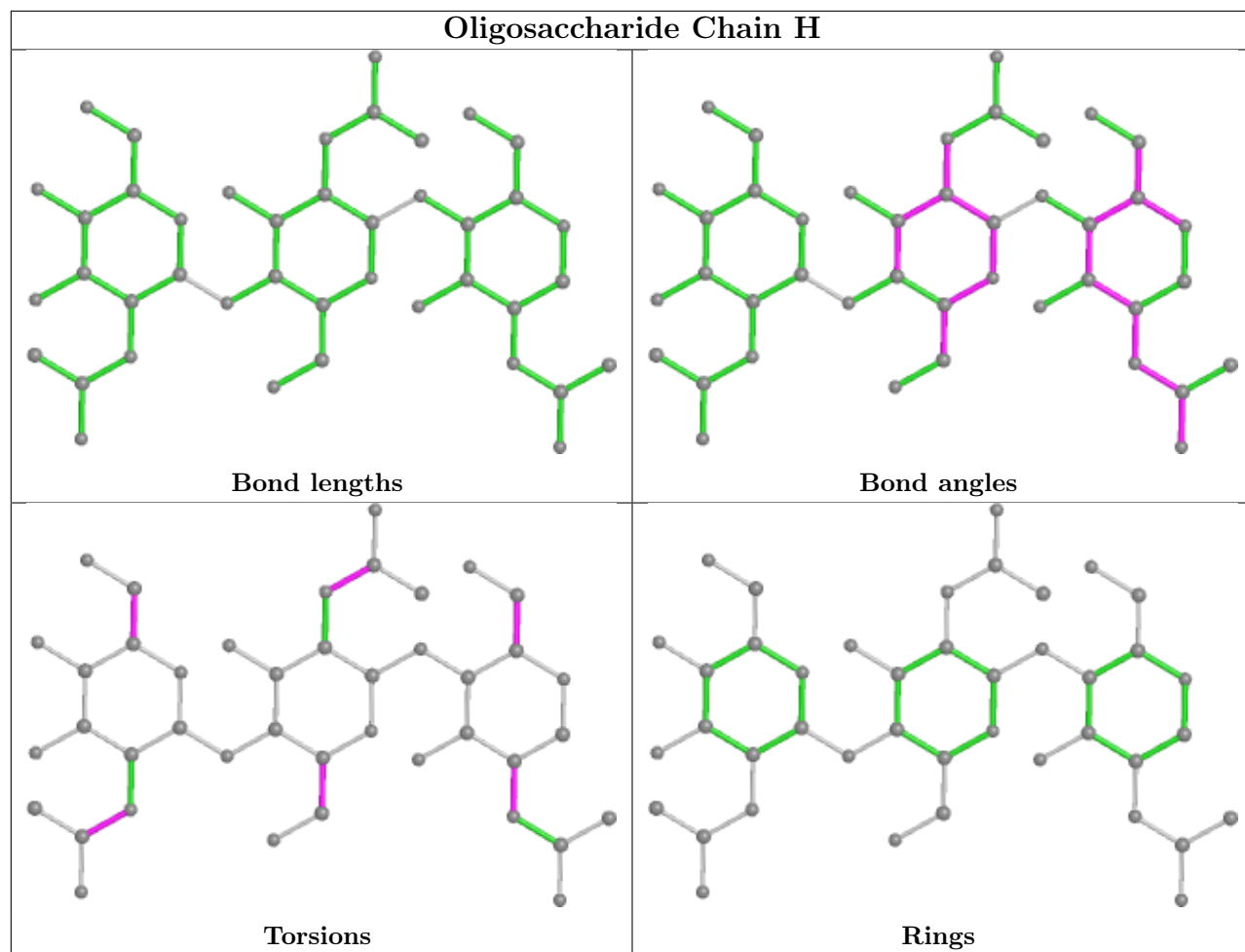


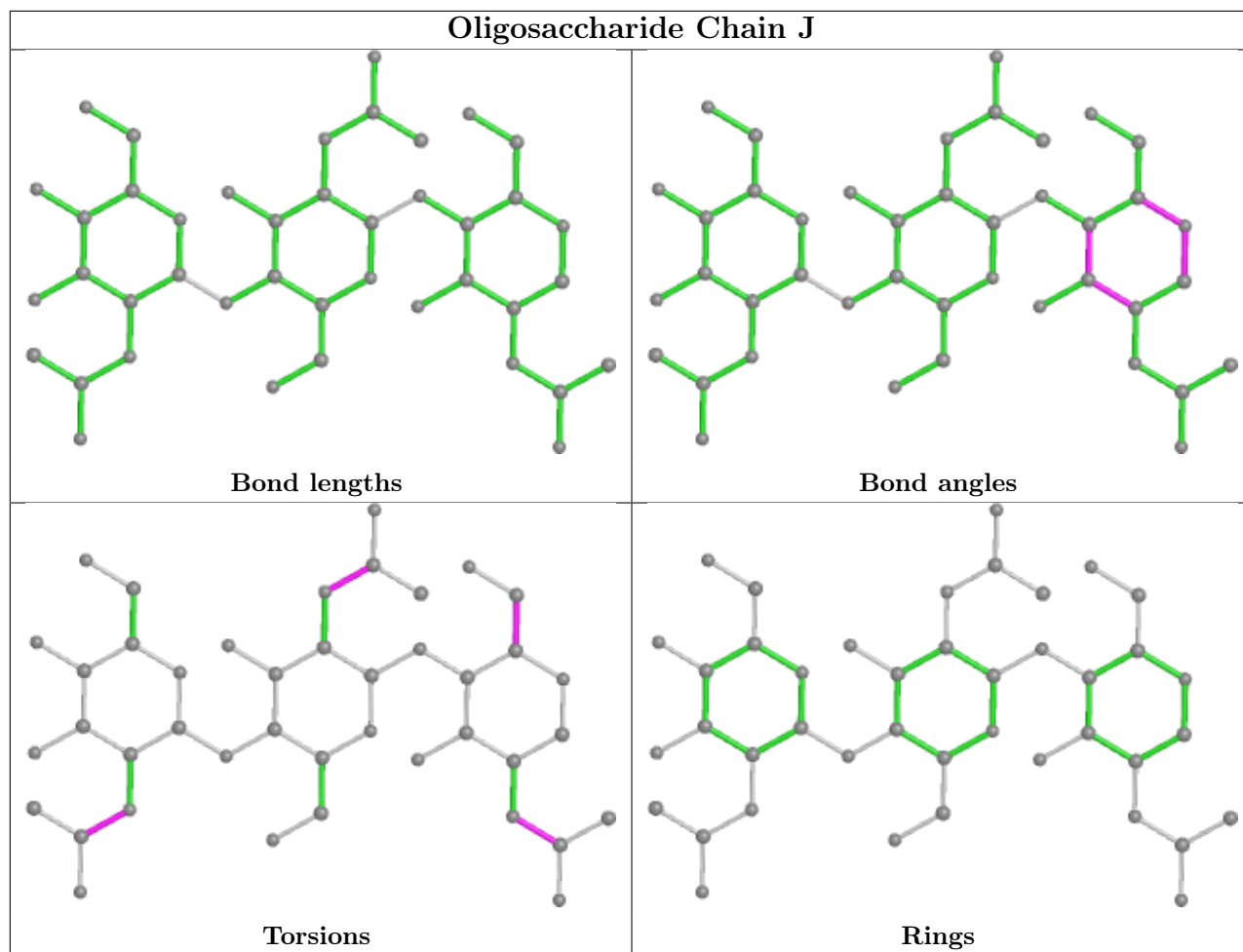


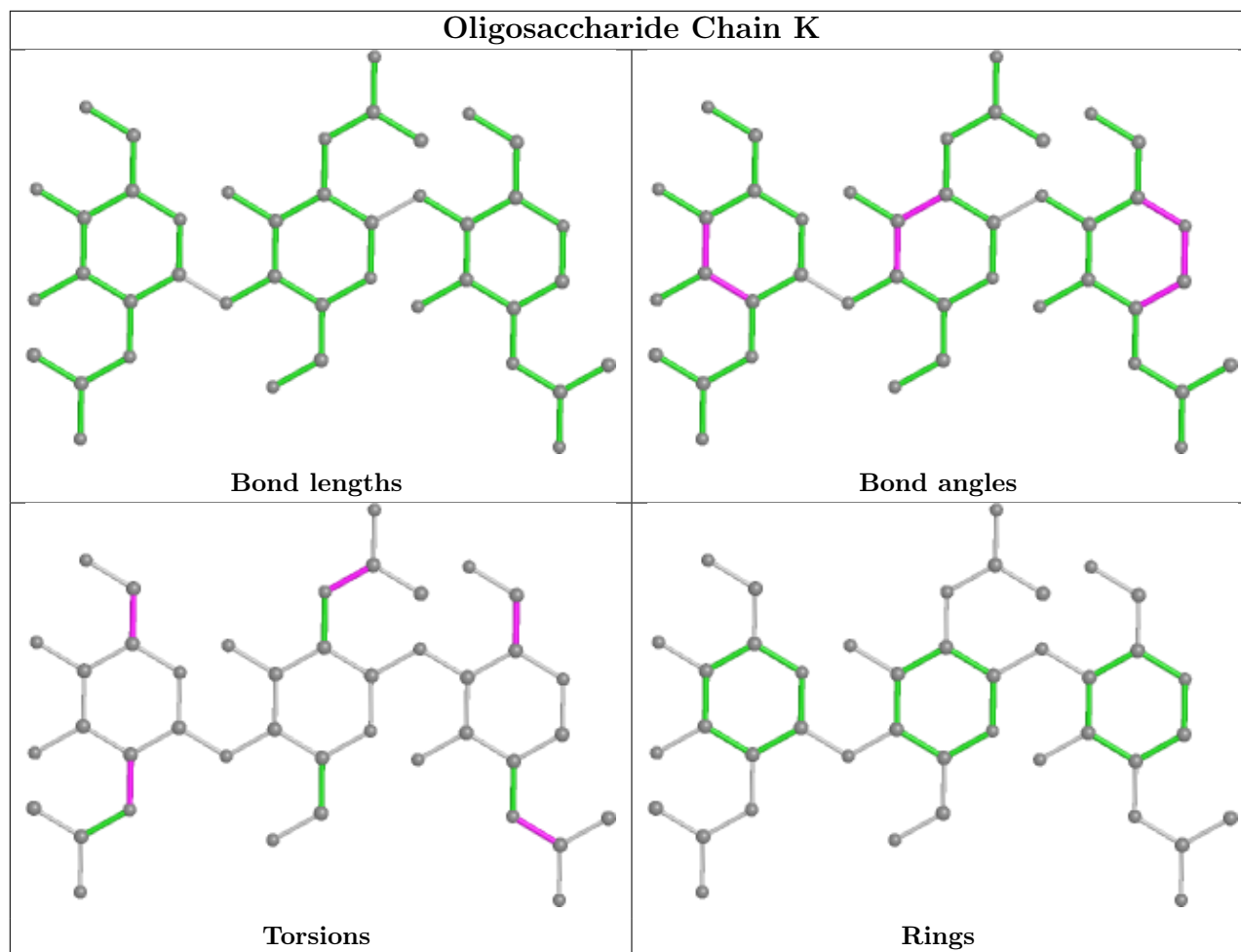












5.6 Ligand geometry [i](#)

5 ligands are modelled in this entry.

In the following table, the Counts columns list the number of bonds (or angles) for which Mogul statistics could be retrieved, the number of bonds (or angles) that are observed in the model and the number of bonds (or angles) that are defined in the Chemical Component Dictionary. The Link column lists molecule types, if any, to which the group is linked. The Z score for a bond length (or angle) is the number of standard deviations the observed value is removed from the expected value. A bond length (or angle) with $|Z| > 2$ is considered an outlier worth inspection. RMSZ is the root-mean-square of all Z scores of the bond lengths (or angles).

Mol	Type	Chain	Res	Link	Bond lengths			Bond angles		
					Counts	RMSZ	$\# Z > 2$	Counts	RMSZ	$\# Z > 2$
4	GOL	A	787	-	5,5,5	0.39	0	5,5,5	0.27	0
4	GOL	A	786	-	5,5,5	0.36	0	5,5,5	0.34	0
4	GOL	B	794	-	5,5,5	0.43	0	5,5,5	0.24	0
5	SO4	B	792	-	4,4,4	0.14	0	6,6,6	0.13	0
4	GOL	B	793	-	5,5,5	0.39	0	5,5,5	0.17	0

In the following table, the Chirals column lists the number of chiral outliers, the number of chiral centers analysed, the number of these observed in the model and the number defined in the Chemical Component Dictionary. Similar counts are reported in the Torsion and Rings columns. '-' means no outliers of that kind were identified.

Mol	Type	Chain	Res	Link	Chirals	Torsions	Rings
4	GOL	A	787	-	-	2/4/4/4	-
4	GOL	B	794	-	-	4/4/4/4	-
4	GOL	A	786	-	-	2/4/4/4	-
4	GOL	B	793	-	-	1/4/4/4	-

There are no bond length outliers.

There are no bond angle outliers.

There are no chirality outliers.

All (9) torsion outliers are listed below:

Mol	Chain	Res	Type	Atoms
4	A	786	GOL	C1-C2-C3-O3
4	A	787	GOL	C1-C2-C3-O3
4	B	794	GOL	O1-C1-C2-C3
4	B	794	GOL	C1-C2-C3-O3
4	A	787	GOL	O2-C2-C3-O3
4	B	794	GOL	O1-C1-C2-O2
4	B	794	GOL	O2-C2-C3-O3
4	A	786	GOL	O2-C2-C3-O3
4	B	793	GOL	C1-C2-C3-O3

There are no ring outliers.

No monomer is involved in short contacts.

5.7 Other polymers [i](#)

There are no such residues in this entry.

5.8 Polymer linkage issues [i](#)

There are no chain breaks in this entry.

6 Fit of model and data

6.1 Protein, DNA and RNA chains

In the following table, the column labelled ‘#RSRZ > 2’ contains the number (and percentage) of RSRZ outliers, followed by percent RSRZ outliers for the chain as percentile scores relative to all X-ray entries and entries of similar resolution. The OWAB column contains the minimum, median, 95th percentile and maximum values of the occupancy-weighted average B-factor per residue. The column labelled ‘Q < 0.9’ lists the number of (and percentage) of residues with an average occupancy less than 0.9.

Mol	Chain	Analysed	<RSRZ>	#RSRZ>2	OWAB(Å ²)	Q<0.9
1	A	775/816 (94%)	0.16	58 (7%) 14 12	27, 55, 89, 101	0
1	B	676/816 (82%)	-0.51	0 100 100	16, 42, 82, 93	0
1	C	676/816 (82%)	0.13	27 (3%) 38 30	25, 53, 101, 108	0
All	All	2127/2448 (86%)	-0.06	85 (3%) 38 30	16, 50, 93, 108	0

All (85) RSRZ outliers are listed below:

Mol	Chain	Res	Type	RSRZ
1	A	439	ASP	7.3
1	A	571	SER	5.7
1	A	567	GLN	4.9
1	A	390	GLY	4.9
1	A	458	ASN	4.9
1	A	482	GLU	4.6
1	A	477	LYS	4.3
1	A	437	ASN	4.1
1	C	184	THR	4.0
1	A	432	GLY	4.0
1	A	486	LYS	4.0
1	A	575	SER	3.9
1	A	389	GLY	3.8
1	A	434	LYS	3.8
1	A	459	ILE	3.4
1	A	413	PHE	3.4
1	A	429	GLU	3.4
1	A	490	TYR	3.4
1	A	471	LYS	3.3
1	C	205	GLU	3.2
1	A	398	ARG	3.2
1	A	442	GLN	3.2
1	C	622	ASP	3.2

Continued on next page...

Continued from previous page...

Mol	Chain	Res	Type	RSRZ
1	A	529	ASN	3.2
1	A	483	HIS	3.2
1	A	536	ARG	3.1
1	C	185	LYS	3.1
1	A	408	PRO	3.0
1	A	492	LEU	3.0
1	A	446	TYR	3.0
1	A	565	LYS	2.9
1	C	198	LYS	2.9
1	A	412	VAL	2.9
1	A	472	CYS	2.9
1	A	451	GLY	2.8
1	C	199	GLY	2.8
1	A	622	ASP	2.8
1	C	109	ASP	2.7
1	C	114	HIS	2.7
1	A	662	ARG	2.7
1	A	579	GLN	2.6
1	C	181	GLN	2.6
1	C	117	ARG	2.6
1	A	365	ASP	2.6
1	A	359	GLU	2.6
1	C	291	ASN	2.6
1	A	415	LYS	2.6
1	A	488	ASN	2.6
1	A	440	ARG	2.5
1	A	460	THR	2.5
1	C	13	ARG	2.5
1	A	436	ALA	2.5
1	C	296	GLY	2.4
1	A	421	ASN	2.4
1	A	545	THR	2.4
1	C	200	ARG	2.4
1	A	549	GLU	2.4
1	A	450	ASN	2.4
1	C	108	ALA	2.4
1	C	155	ASP	2.4
1	C	111	ASN	2.4
1	C	204	THR	2.4
1	A	360	SER	2.4
1	A	484	SER	2.4
1	A	566	ASN	2.3

Continued on next page...

Continued from previous page...

Mol	Chain	Res	Type	RSRZ
1	A	570	TYR	2.3
1	C	367	GLY	2.3
1	C	136	GLU	2.3
1	A	499	GLU	2.3
1	A	568	GLU	2.2
1	A	416	CYS	2.2
1	A	452	ASP	2.2
1	C	180	TYR	2.1
1	C	623	GLY	2.1
1	A	475	LYS	2.1
1	A	550	ASN	2.1
1	A	409	GLY	2.1
1	A	419	GLY	2.1
1	A	402	GLN	2.0
1	A	42	ASP	2.0
1	C	177	TYR	2.0
1	C	192	THR	2.0
1	C	156	GLY	2.0
1	C	258	GLN	2.0
1	C	174	GLU	2.0

6.2 Non-standard residues in protein, DNA, RNA chains [i](#)

There are no non-standard protein/DNA/RNA residues in this entry.

6.3 Carbohydrates [i](#)

In the following table, the Atoms column lists the number of modelled atoms in the group and the number defined in the chemical component dictionary. The B-factors column lists the minimum, median, 95th percentile and maximum values of B factors of atoms in the group. The column labelled 'Q< 0.9' lists the number of atoms with occupancy less than 0.9.

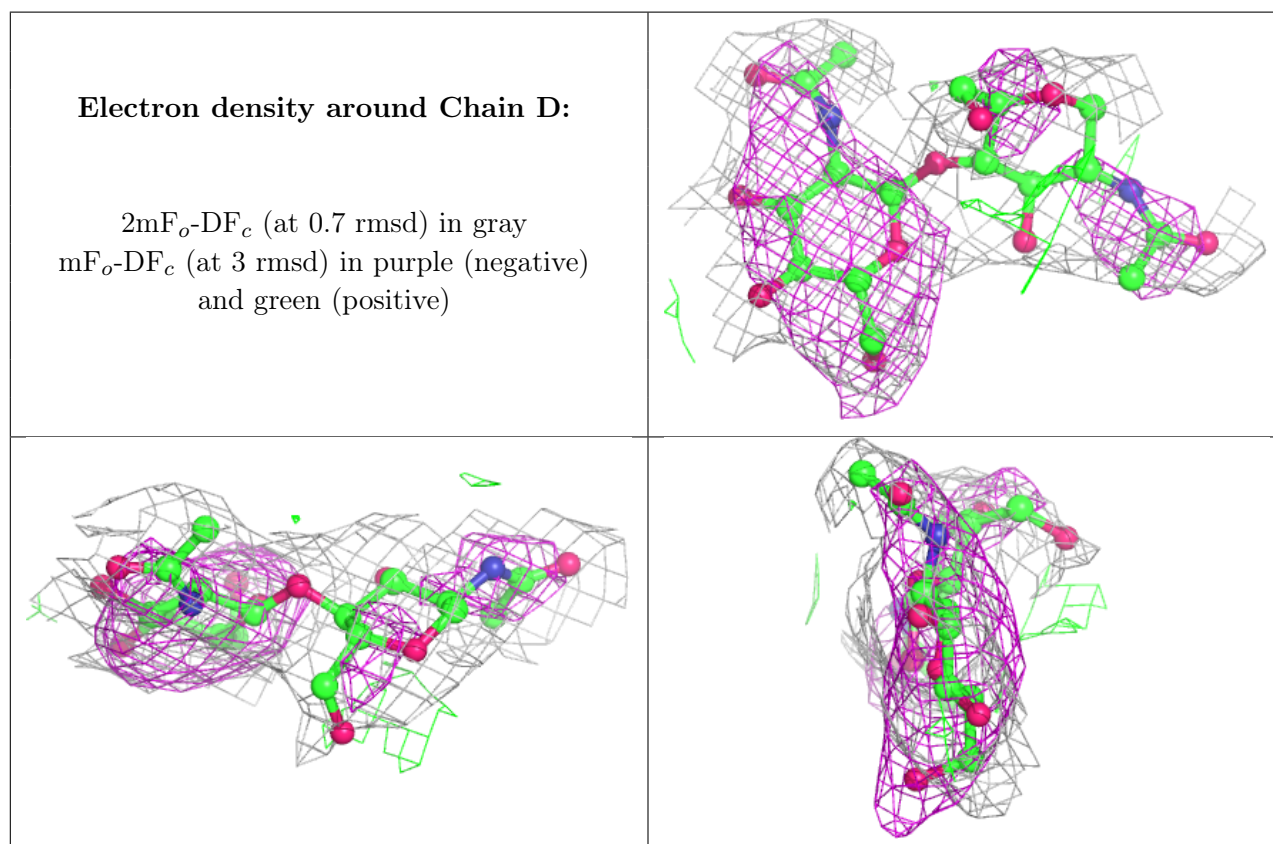
Mol	Type	Chain	Res	Atoms	RSCC	RSR	B-factors(Å ²)	Q<0.9
3	NAG	G	3	14/15	0.74	0.64	52,53,54,54	0
3	NAG	K	1	14/15	0.74	0.46	63,64,67,67	0
3	NAG	H	3	14/15	0.77	0.59	83,84,85,86	0
2	NAG	I	1	14/15	0.79	0.52	64,66,68,70	0
3	NAG	H	2	14/15	0.79	0.46	77,80,81,81	0
2	NAG	E	1	14/15	0.80	0.49	62,65,66,66	0
3	NAG	G	2	14/15	0.80	0.41	44,50,51,51	0
3	NAG	J	3	14/15	0.80	0.51	53,53,55,55	0

Continued on next page...

Continued from previous page...

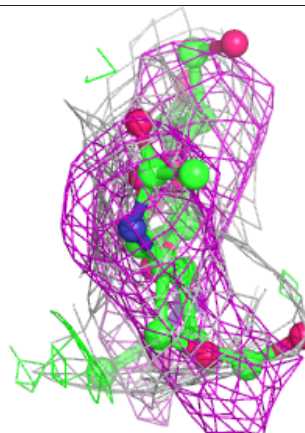
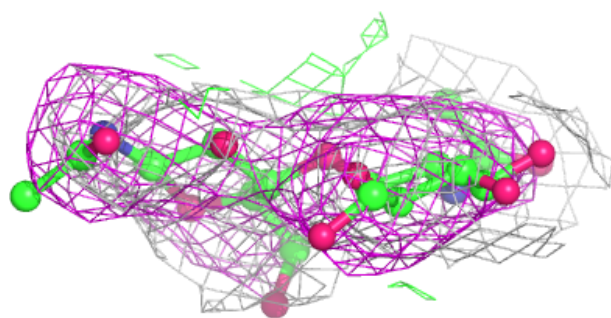
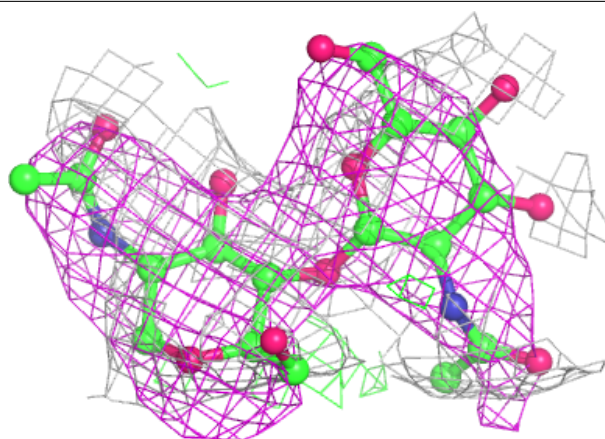
Mol	Type	Chain	Res	Atoms	RSCC	RSR	B-factors(\AA^2)	Q<0.9
2	NAG	F	2	14/15	0.80	0.53	54,56,59,59	0
3	NAG	H	1	14/15	0.81	0.38	60,64,68,72	0
2	NAG	D	2	14/15	0.84	0.48	52,53,53,54	0
2	NAG	E	2	14/15	0.85	0.47	66,66,67,67	0
3	NAG	K	3	14/15	0.86	0.47	66,67,67,67	0
3	NAG	K	2	14/15	0.87	0.43	66,66,67,67	0
2	NAG	F	1	14/15	0.88	0.35	46,47,49,51	0
2	NAG	I	2	14/15	0.89	0.50	71,72,73,73	0
3	NAG	G	1	14/15	0.90	0.32	38,44,48,48	0
2	NAG	D	1	14/15	0.90	0.31	50,52,52,53	0
3	NAG	J	1	14/15	0.92	0.32	42,45,46,46	0
3	NAG	J	2	14/15	0.94	0.34	46,49,50,51	0

The following is a graphical depiction of the model fit to experimental electron density for oligosaccharide. Each fit is shown from different orientation to approximate a three-dimensional view.



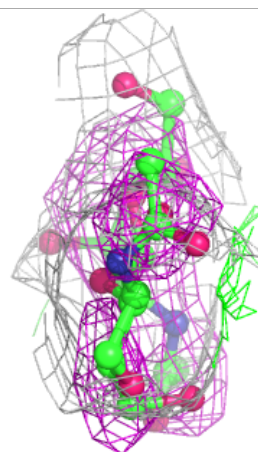
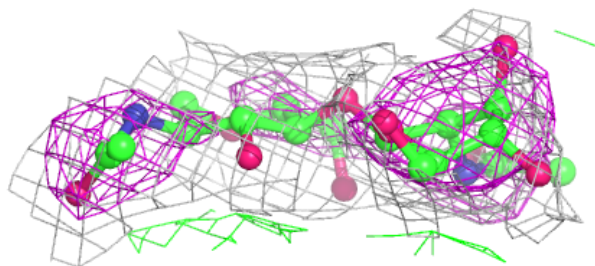
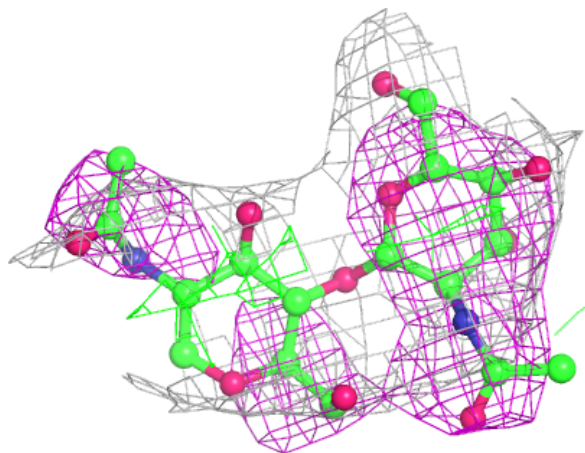
Electron density around Chain E:

$2mF_o-DF_c$ (at 0.7 rmsd) in gray
 mF_o-DF_c (at 3 rmsd) in purple (negative)
and green (positive)



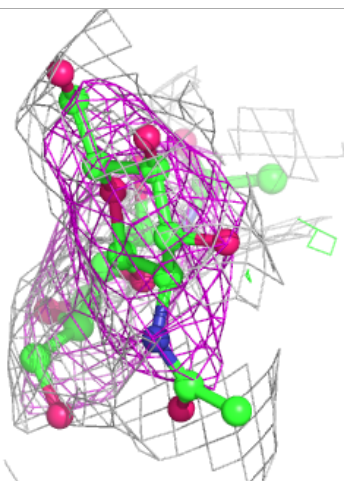
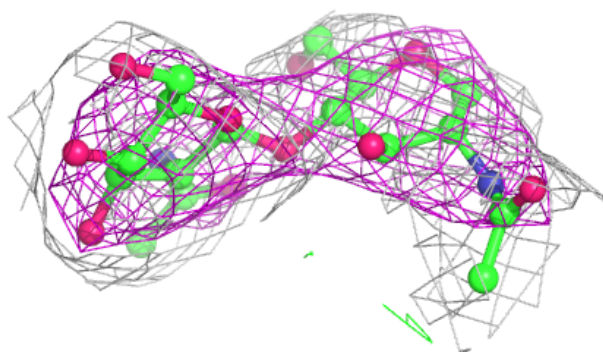
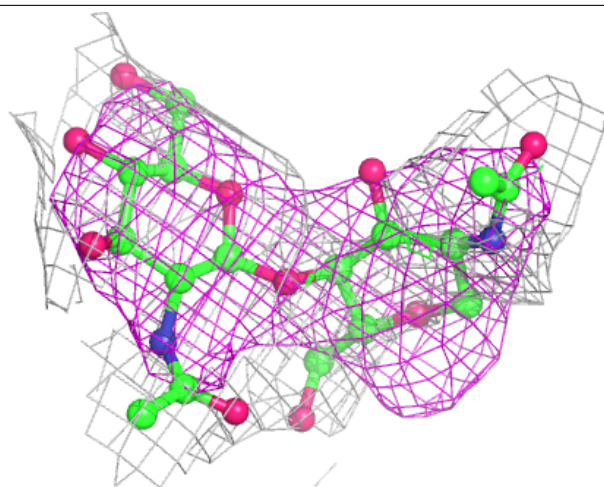
Electron density around Chain F:

$2mF_o-DF_c$ (at 0.7 rmsd) in gray
 mF_o-DF_c (at 3 rmsd) in purple (negative)
and green (positive)



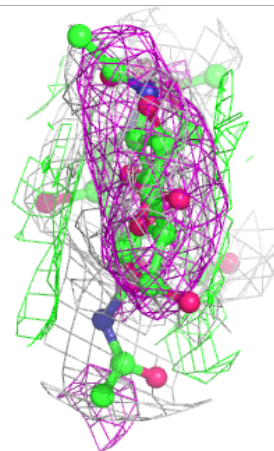
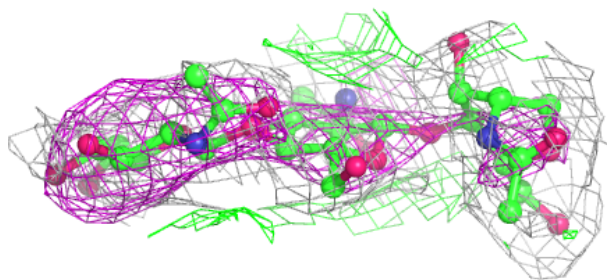
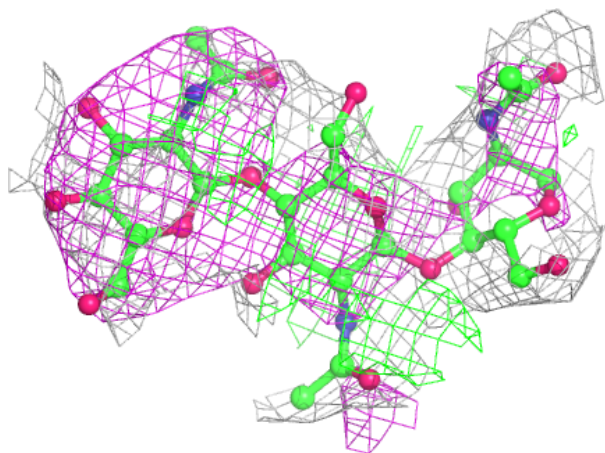
Electron density around Chain I:

$2mF_o-DF_c$ (at 0.7 rmsd) in gray
 mF_o-DF_c (at 3 rmsd) in purple (negative)
and green (positive)



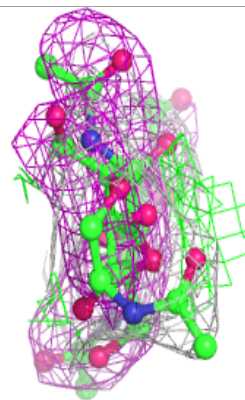
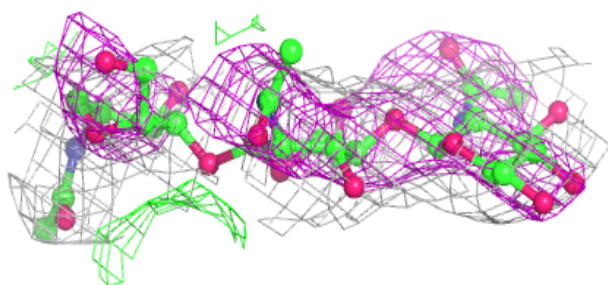
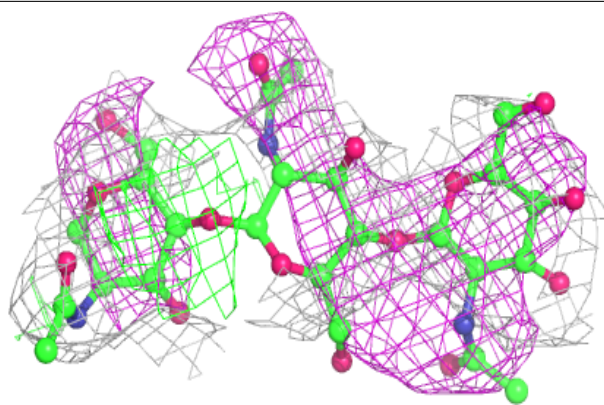
Electron density around Chain G:

$2mF_o-DF_c$ (at 0.7 rmsd) in gray
 mF_o-DF_c (at 3 rmsd) in purple (negative)
and green (positive)



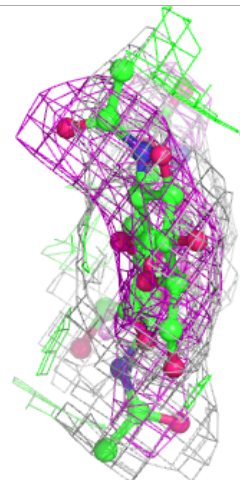
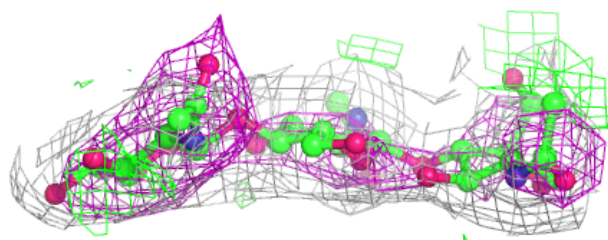
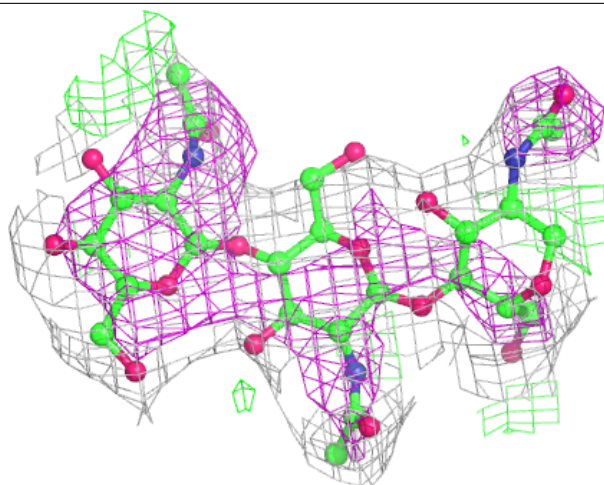
Electron density around Chain H:

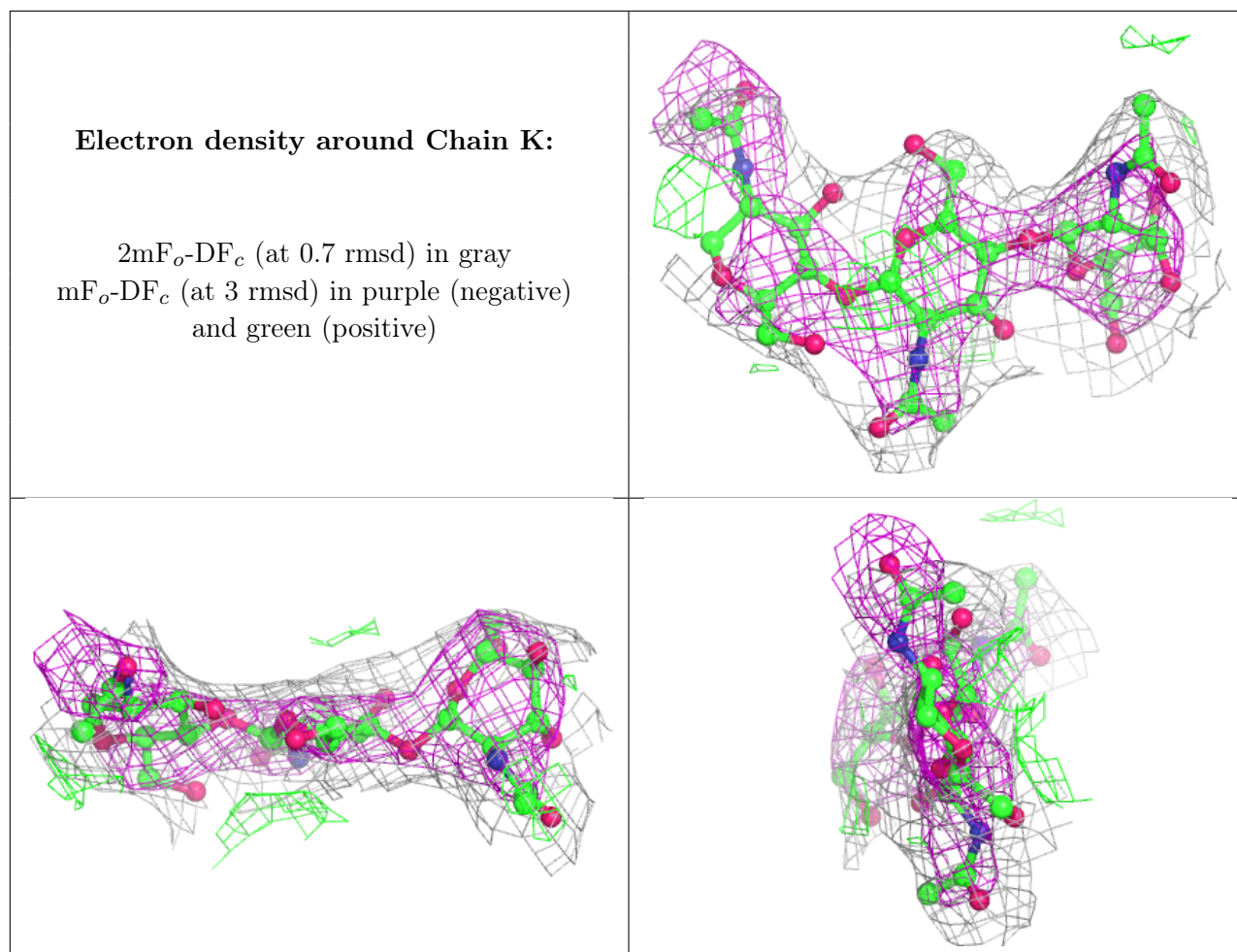
$2mF_o-DF_c$ (at 0.7 rmsd) in gray
 mF_o-DF_c (at 3 rmsd) in purple (negative)
and green (positive)



Electron density around Chain J:

$2mF_o-DF_c$ (at 0.7 rmsd) in gray
 mF_o-DF_c (at 3 rmsd) in purple (negative)
and green (positive)





6.4 Ligands [i](#)

In the following table, the Atoms column lists the number of modelled atoms in the group and the number defined in the chemical component dictionary. The B-factors column lists the minimum, median, 95th percentile and maximum values of B factors of atoms in the group. The column labelled 'Q<0.9' lists the number of atoms with occupancy less than 0.9.

Mol	Type	Chain	Res	Atoms	RSCC	RSR	B-factors(Å ²)	Q<0.9
4	GOL	A	787	6/6	0.78	0.49	22,22,22,23	0
4	GOL	B	793	6/6	0.81	0.35	23,23,24,24	0
4	GOL	B	794	6/6	0.82	0.47	41,41,42,44	0
4	GOL	A	786	6/6	0.83	0.34	25,27,27,27	0
5	SO4	B	792	5/5	0.91	0.35	20,21,21,24	0

6.5 Other polymers [i](#)

There are no such residues in this entry.