



Full wwPDB X-ray Structure Validation Report ⓘ

Oct 14, 2023 – 10:36 PM EDT

PDB ID : 8DQP
Title : Crystal structure of Arabidopsis thaliana COSY in complex with scopoletin
Authors : Kim, C.Y.; Mitchell, A.J.; Gutierrez, M.; Weng, J.K.
Deposited on : 2022-07-19
Resolution : 2.48 Å(reported)

This is a Full wwPDB X-ray Structure Validation Report for a publicly released PDB entry.

We welcome your comments at validation@mail.wwpdb.org

A user guide is available at

<https://www.wwpdb.org/validation/2017/XrayValidationReportHelp>

with specific help available everywhere you see the ⓘ symbol.

The types of validation reports are described at

<http://www.wwpdb.org/validation/2017/FAQs#types>.

The following versions of software and data (see [references ⓘ](#)) were used in the production of this report:

MolProbity : 4.02b-467
Mogul : 1.8.5 (274361), CSD as541be (2020)
Xtriage (Phenix) : 1.13
EDS : 2.36
buster-report : 1.1.7 (2018)
Percentile statistics : 20191225.v01 (using entries in the PDB archive December 25th 2019)
Refmac : 5.8.0158
CCP4 : 7.0.044 (Gargrove)
Ideal geometry (proteins) : Engh & Huber (2001)
Ideal geometry (DNA, RNA) : Parkinson et al. (1996)
Validation Pipeline (wwPDB-VP) : 2.36

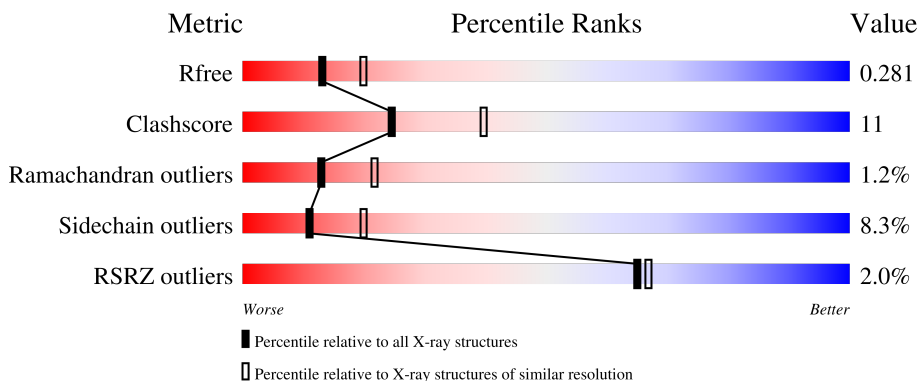
1 Overall quality at a glance

The following experimental techniques were used to determine the structure:

X-RAY DIFFRACTION

The reported resolution of this entry is 2.48 Å.

Percentile scores (ranging between 0-100) for global validation metrics of the entry are shown in the following graphic. The table shows the number of entries on which the scores are based.



Metric	Whole archive (#Entries)	Similar resolution (#Entries, resolution range(Å))
R_{free}	130704	5857 (2.50-2.46)
Clashscore	141614	6594 (2.50-2.46)
Ramachandran outliers	138981	6469 (2.50-2.46)
Sidechain outliers	138945	6471 (2.50-2.46)
RSRZ outliers	127900	5738 (2.50-2.46)

The table below summarises the geometric issues observed across the polymeric chains and their fit to the electron density. The red, orange, yellow and green segments of the lower bar indicate the fraction of residues that contain outliers for ≥ 3 , 2, 1 and 0 types of geometric quality criteria respectively. A grey segment represents the fraction of residues that are not modelled. The numeric value for each fraction is indicated below the corresponding segment, with a dot representing fractions $\leq 5\%$. The upper red bar (where present) indicates the fraction of residues that have poor fit to the electron density. The numeric value is given above the bar.

Mol	Chain	Length	Quality of chain
1	A	451	
1	B	451	

The following table lists non-polymeric compounds, carbohydrate monomers and non-standard residues in protein, DNA, RNA chains that are outliers for geometric or electron-density-fit criteria:

Mol	Type	Chain	Res	Chirality	Geometry	Clashes	Electron density
2	T83	A	501	-	X	-	-
5	PG4	A	505	-	X	X	-

2 Entry composition [i](#)

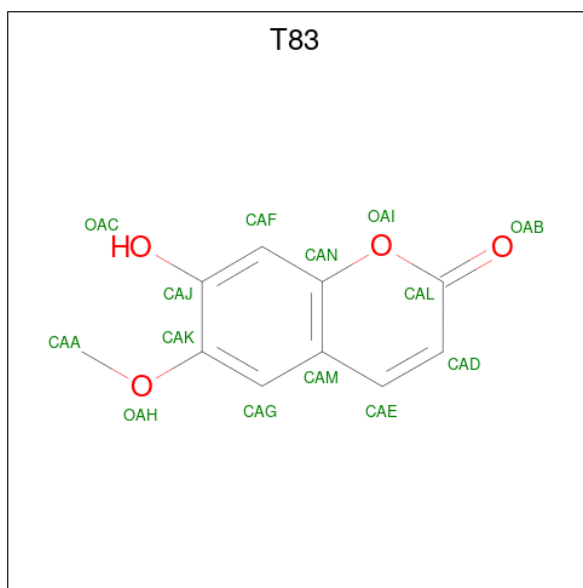
There are 7 unique types of molecules in this entry. The entry contains 6718 atoms, of which 0 are hydrogens and 0 are deuteriums.

In the tables below, the ZeroOcc column contains the number of atoms modelled with zero occupancy, the AltConf column contains the number of residues with at least one atom in alternate conformation and the Trace column contains the number of residues modelled with at most 2 atoms.

- Molecule 1 is a protein called Coumarin Synthase.

Mol	Chain	Residues	Atoms					ZeroOcc	AltConf	Trace
			Total	C	N	O	S			
1	A	426	Total 3339	C 2133	N 568	O 622	S 16	0	1	0
1	B	409	Total 3216	C 2056	N 548	O 597	S 15	0	0	0

- Molecule 2 is 7-hydroxy-6-methoxy-2H-1-benzopyran-2-one (three-letter code: T83) (formula: C₁₀H₈O₄) (labeled as "Ligand of Interest" by depositor).



Mol	Chain	Residues	Atoms			ZeroOcc	AltConf
			Total	C	O		
2	A	1	Total 14	C 10	O 4	0	0

- Molecule 3 is CALCIUM ION (three-letter code: CA) (formula: Ca).

Mol	Chain	Residues	Atoms		ZeroOcc	AltConf
			Total	Ca		
3	A	1	Total 1	Ca 1	0	0

Continued on next page...

Continued from previous page...

Mol	Chain	Residues	Atoms		ZeroOcc	AltConf
3	B	1	Total	Ca	0	0
			1	1		

- Molecule 4 is 1,2-ETHANEDIOL (three-letter code: EDO) (formula: $C_2H_6O_2$).



Mol	Chain	Residues	Atoms			ZeroOcc	AltConf
4	A	1	Total	C	O	0	0
			4	2	2		
4	A	1	Total	C	O	0	0
			4	2	2		

- Molecule 5 is TETRAETHYLENE GLYCOL (three-letter code: PG4) (formula: $C_8H_{18}O_5$).



Mol	Chain	Residues	Atoms			ZeroOcc	AltConf
5	A	1	Total	C	O	0	0
			13	8	5		

- Molecule 6 is ACETATE ION (three-letter code: ACT) (formula: $C_2H_3O_2$).



Mol	Chain	Residues	Atoms			ZeroOcc	AltConf
6	A	1	Total	C	O	0	0
			4	2	2		

- Molecule 7 is water.

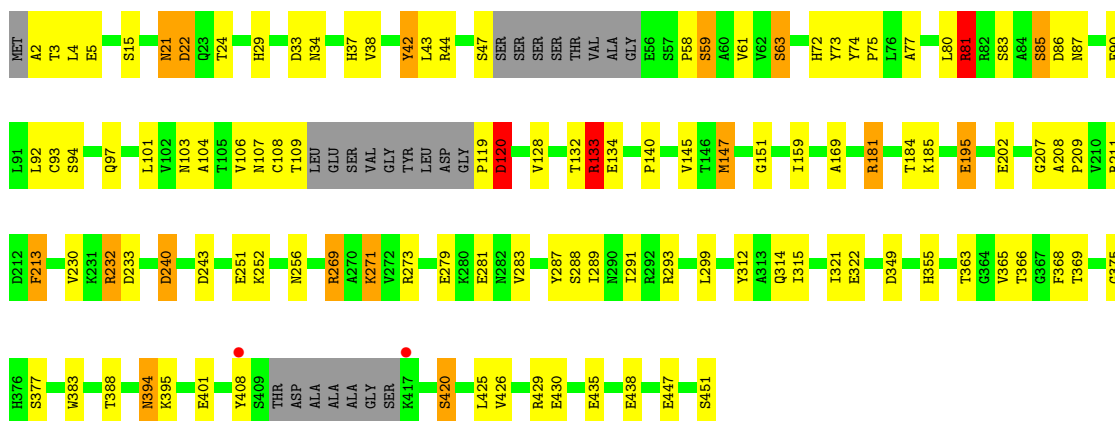
Mol	Chain	Residues	Atoms		ZeroOcc	AltConf
7	A	68	Total 68	O 68	0	0
7	B	54	Total 54	O 54	0	0

3 Residue-property plots [i](#)

These plots are drawn for all protein, RNA, DNA and oligosaccharide chains in the entry. The first graphic for a chain summarises the proportions of the various outlier classes displayed in the second graphic. The second graphic shows the sequence view annotated by issues in geometry and electron density. Residues are color-coded according to the number of geometric quality criteria for which they contain at least one outlier: green = 0, yellow = 1, orange = 2 and red = 3 or more. A red dot above a residue indicates a poor fit to the electron density ($RSRZ > 2$). Stretches of 2 or more consecutive residues without any outlier are shown as a green connector. Residues present in the sample, but not in the model, are shown in grey.

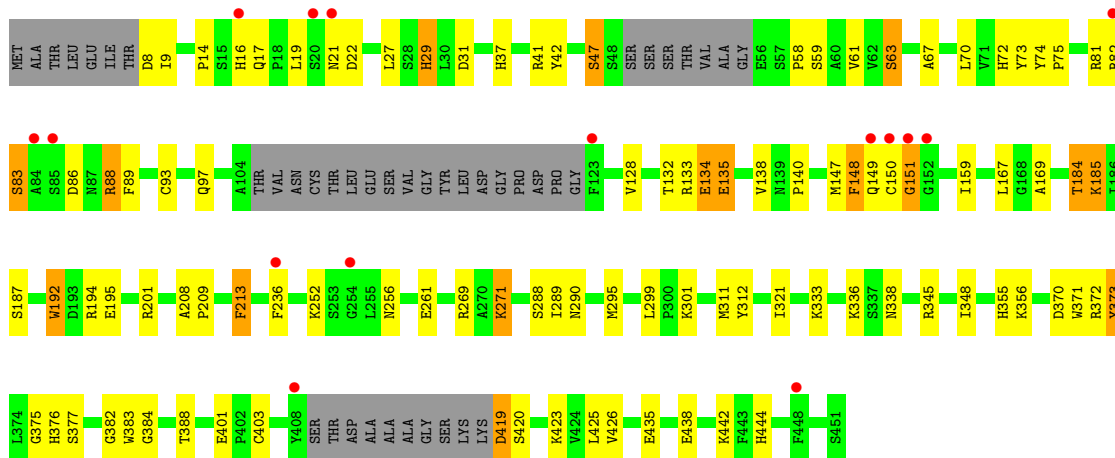
- Molecule 1: Coumarin Synthase

Chain A: 



- Molecule 1: Coumarin Synthase

Chain B: 



4 Data and refinement statistics

Property	Value	Source
Space group	P 21 21 21	Depositor
Cell constants a, b, c, α , β , γ	58.46Å 58.35Å 273.28Å 90.00° 90.00° 90.00°	Depositor
Resolution (Å)	68.32 – 2.48 68.32 – 2.48	Depositor EDS
% Data completeness (in resolution range)	97.5 (68.32-2.48) 97.8 (68.32-2.48)	Depositor EDS
R_{merge}	(Not available)	Depositor
R_{sym}	(Not available)	Depositor
$\langle I/\sigma(I) \rangle$ ¹	1.45 (at 2.48Å)	Xtrriage
Refinement program	PHENIX 1.19.2_4158	Depositor
R, R_{free}	0.173 , 0.281 0.174 , 0.281	Depositor DCC
R_{free} test set	1563 reflections (4.67%)	wwPDB-VP
Wilson B-factor (Å ²)	58.5	Xtrriage
Anisotropy	0.951	Xtrriage
Bulk solvent k_{sol} (e/Å ³), B_{sol} (Å ²)	0.34 , 47.2	EDS
L-test for twinning ²	$\langle L \rangle = 0.51$, $\langle L^2 \rangle = 0.34$	Xtrriage
Estimated twinning fraction	0.021 for k,h,-l	Xtrriage
F_o, F_c correlation	0.97	EDS
Total number of atoms	6718	wwPDB-VP
Average B, all atoms (Å ²)	79.0	wwPDB-VP

Xtrriage's analysis on translational NCS is as follows: *The largest off-origin peak in the Patterson function is 3.89% of the height of the origin peak. No significant pseudotranslation is detected.*

¹Intensities estimated from amplitudes.

²Theoretical values of $\langle |L| \rangle$, $\langle L^2 \rangle$ for acentric reflections are 0.5, 0.333 respectively for untwinned datasets, and 0.375, 0.2 for perfectly twinned datasets.

5 Model quality i

5.1 Standard geometry i

Bond lengths and bond angles in the following residue types are not validated in this section: T83, ACT, CA, PG4, EDO

The Z score for a bond length (or angle) is the number of standard deviations the observed value is removed from the expected value. A bond length (or angle) with $|Z| > 5$ is considered an outlier worth inspection. RMSZ is the root-mean-square of all Z scores of the bond lengths (or angles).

Mol	Chain	Bond lengths		Bond angles	
		RMSZ	# Z >5	RMSZ	# Z >5
1	A	1.34	29/3421 (0.8%)	1.22	12/4637 (0.3%)
1	B	1.05	13/3296 (0.4%)	1.13	10/4466 (0.2%)
All	All	1.21	42/6717 (0.6%)	1.18	22/9103 (0.2%)

Chiral center outliers are detected by calculating the chiral volume of a chiral center and verifying if the center is modelled as a planar moiety or with the opposite hand. A planarity outlier is detected by checking planarity of atoms in a peptide group, atoms in a mainchain group or atoms of a sidechain that are expected to be planar.

Mol	Chain	#Chirality outliers	#Planarity outliers
1	A	0	4
1	B	0	4
All	All	0	8

All (42) bond length outliers are listed below:

Mol	Chain	Res	Type	Atoms	Z	Observed(Å)	Ideal(Å)
1	A	438	GLU	CD-OE2	11.98	1.38	1.25
1	A	438	GLU	CD-OE1	11.13	1.37	1.25
1	A	447	GLU	CD-OE2	9.95	1.36	1.25
1	A	134	GLU	CD-OE2	9.16	1.35	1.25
1	A	322	GLU	CD-OE1	8.75	1.35	1.25
1	A	195	GLU	CD-OE2	8.02	1.34	1.25
1	B	195	GLU	CD-OE2	7.96	1.34	1.25
1	A	134	GLU	CD-OE1	7.78	1.34	1.25
1	A	451	SER	C-O	7.59	1.37	1.23
1	A	207	GLY	C-O	-7.13	1.12	1.23
1	A	435	GLU	CD-OE1	7.09	1.33	1.25
1	A	90	GLU	CD-OE2	7.07	1.33	1.25
1	A	230	VAL	N-CA	-7.06	1.32	1.46
1	A	202	GLU	CD-OE2	7.02	1.33	1.25

Continued on next page...

Continued from previous page...

Mol	Chain	Res	Type	Atoms	Z	Observed(Å)	Ideal(Å)
1	B	135	GLU	CD-OE2	6.99	1.33	1.25
1	A	430	GLU	CD-OE2	6.97	1.33	1.25
1	A	120	ASP	N-CA	6.91	1.60	1.46
1	A	363	THR	C-O	-6.67	1.10	1.23
1	A	283	VAL	C-O	-6.54	1.10	1.23
1	A	195	GLU	CD-OE1	6.46	1.32	1.25
1	A	314	GLN	C-O	-6.10	1.11	1.23
1	A	108	CYS	N-CA	6.06	1.58	1.46
1	B	47	SER	N-CA	6.02	1.58	1.46
1	A	90	GLU	CD-OE1	5.90	1.32	1.25
1	A	430	GLU	CD-OE1	5.87	1.32	1.25
1	A	366	THR	N-CA	-5.85	1.34	1.46
1	A	365	VAL	C-O	-5.78	1.12	1.23
1	B	261	GLU	CD-OE1	5.77	1.31	1.25
1	B	252	LYS	C-O	-5.76	1.12	1.23
1	B	382	GLY	C-O	5.75	1.32	1.23
1	B	384	GLY	N-CA	-5.67	1.37	1.46
1	B	195	GLU	CD-OE1	5.65	1.31	1.25
1	A	281	GLU	CD-OE1	5.51	1.31	1.25
1	A	315	ILE	N-CA	-5.45	1.35	1.46
1	A	80	LEU	C-O	-5.41	1.13	1.23
1	A	375	GLY	N-CA	5.36	1.54	1.46
1	A	77	ALA	C-O	5.32	1.33	1.23
1	B	134	GLU	CD-OE2	5.21	1.31	1.25
1	B	384	GLY	C-O	5.12	1.31	1.23
1	B	438	GLU	CD-OE1	5.11	1.31	1.25
1	B	435	GLU	CD-OE1	5.10	1.31	1.25
1	B	151	GLY	N-CA	5.06	1.53	1.46

All (22) bond angle outliers are listed below:

Mol	Chain	Res	Type	Atoms	Z	Observed(°)	Ideal(°)
1	B	41	ARG	NE-CZ-NH2	-9.92	115.34	120.30
1	A	81	ARG	NE-CZ-NH1	-7.84	116.38	120.30
1	A	269	ARG	NE-CZ-NH1	-7.41	116.60	120.30
1	A	232	ARG	NE-CZ-NH1	-7.32	116.64	120.30
1	A	133	ARG	CG-CD-NE	7.22	126.97	111.80
1	B	133	ARG	NE-CZ-NH2	-6.98	116.81	120.30
1	A	44	ARG	NE-CZ-NH1	6.79	123.69	120.30
1	B	133	ARG	NE-CZ-NH1	6.56	123.58	120.30
1	A	213	PHE	CB-CG-CD1	6.55	125.38	120.80
1	B	184	THR	CA-CB-OG1	-6.35	95.67	109.00

Continued on next page...

Continued from previous page...

Mol	Chain	Res	Type	Atoms	Z	Observed(°)	Ideal(°)
1	A	119	PRO	C-N-CA	6.09	136.94	121.70
1	A	243	ASP	CB-CG-OD2	-5.93	112.96	118.30
1	B	372	ARG	NE-CZ-NH2	-5.77	117.42	120.30
1	B	213	PHE	CB-CG-CD1	5.64	124.75	120.80
1	A	429	ARG	NE-CZ-NH2	-5.54	117.53	120.30
1	B	213	PHE	CA-CB-CG	5.53	127.17	113.90
1	B	148	PHE	CB-CA-C	5.45	121.29	110.40
1	A	349	ASP	CB-CG-OD1	5.35	123.12	118.30
1	A	181	ARG	NE-CZ-NH1	5.32	122.96	120.30
1	B	356	LYS	CB-CA-C	5.28	120.95	110.40
1	B	201	ARG	NE-CZ-NH1	5.21	122.91	120.30
1	A	408	TYR	CB-CG-CD1	5.17	124.11	121.00

There are no chirality outliers.

All (8) planarity outliers are listed below:

Mol	Chain	Res	Type	Group
1	A	181	ARG	Sidechain
1	A	269	ARG	Sidechain
1	A	273	ARG	Sidechain
1	A	81	ARG	Sidechain
1	B	269	ARG	Sidechain
1	B	373	TYR	Peptide
1	B	82	ARG	Sidechain
1	B	88	ARG	Sidechain

5.2 Too-close contacts [\(i\)](#)

In the following table, the Non-H and H(model) columns list the number of non-hydrogen atoms and hydrogen atoms in the chain respectively. The H(added) column lists the number of hydrogen atoms added and optimized by MolProbity. The Clashes column lists the number of clashes within the asymmetric unit, whereas Symm-Clashes lists symmetry-related clashes.

Mol	Chain	Non-H	H(model)	H(added)	Clashes	Symm-Clashes
1	A	3339	0	3274	63	1
1	B	3216	0	3153	76	0
2	A	14	0	0	4	0
3	A	1	0	0	0	0
3	B	1	0	0	0	0
4	A	8	0	12	4	0
5	A	13	0	18	8	0

Continued on next page...

Continued from previous page...

Mol	Chain	Non-H	H(model)	H(added)	Clashes	Symm-Clashes
6	A	4	0	3	1	0
7	A	68	0	0	27	0
7	B	54	0	0	27	0
All	All	6718	0	6460	142	1

The all-atom clashscore is defined as the number of clashes found per 1000 atoms (including hydrogen atoms). The all-atom clashscore for this structure is 11.

All (142) close contacts within the same asymmetric unit are listed below, sorted by their clash magnitude.

Atom-1	Atom-2	Interatomic distance (Å)	Clash overlap (Å)
1:A:169:ALA:HB2	2:A:501:T83:CAA	1.32	1.54
1:A:169:ALA:CB	2:A:501:T83:CAA	1.95	1.44
4:A:504:EDO:H12	7:A:649:HOH:O	1.10	1.22
5:A:505:PG4:H72	7:A:632:HOH:O	1.39	1.19
1:A:355:HIS:HB3	7:A:617:HOH:O	1.43	1.18
1:B:192:TRP:CZ2	7:B:605:HOH:O	1.98	1.17
1:A:92:LEU:HB2	7:A:620:HOH:O	1.44	1.14
1:A:271:LYS:HD2	7:A:642:HOH:O	1.53	1.07
1:A:369:THR:HA	5:A:505:PG4:H52	1.36	1.06
4:A:504:EDO:C1	7:A:649:HOH:O	1.76	1.01
1:A:72:HIS:CD2	7:A:657:HOH:O	2.16	0.98
1:A:72:HIS:HD2	7:A:657:HOH:O	1.46	0.98
1:A:377:SER:HB2	7:A:648:HOH:O	1.66	0.93
1:A:38:VAL:HG23	7:A:645:HOH:O	1.70	0.92
1:B:132:THR:OG1	1:B:135:GLU:OE1	1.88	0.91
1:A:369:THR:HG23	5:A:505:PG4:H41	1.58	0.86
1:B:59:SER:H	1:B:147:MET:HE1	1.42	0.85
1:A:59:SER:OG	1:A:103:ASN:OD1	1.93	0.85
1:A:109:THR:CB	7:A:614:HOH:O	2.27	0.82
1:B:169:ALA:HA	7:B:651:HOH:O	1.78	0.81
1:B:9:ILE:HG13	7:B:609:HOH:O	1.80	0.81
1:A:169:ALA:HB3	2:A:501:T83:CAA	2.07	0.80
1:B:185:LYS:HE3	7:B:629:HOH:O	1.81	0.80
1:B:194:ARG:HD2	7:B:605:HOH:O	1.84	0.78
1:A:240:ASP:HB2	7:A:666:HOH:O	1.85	0.75
1:B:89:PHE:CE1	7:B:612:HOH:O	2.42	0.72
1:A:401:GLU:OE1	6:A:506:ACT:H2	1.91	0.71
1:B:58:PRO:CG	1:B:147:MET:HE2	2.20	0.71
1:B:59:SER:H	1:B:147:MET:CE	2.02	0.71
1:A:369:THR:HA	5:A:505:PG4:C5	2.20	0.70

Continued on next page...

Continued from previous page...

Atom-1	Atom-2	Interatomic distance (Å)	Clash overlap (Å)
1:B:192:TRP:CH2	7:B:605:HOH:O	2.29	0.70
1:A:377:SER:CB	7:A:648:HOH:O	2.32	0.69
1:B:58:PRO:CB	1:B:147:MET:HE2	2.23	0.68
1:A:34:ASN:HB2	7:A:618:HOH:O	1.93	0.67
1:B:167:LEU:CD1	1:B:290:ASN:ND2	2.59	0.66
1:B:59:SER:N	1:B:147:MET:CE	2.60	0.65
1:B:72:HIS:CD2	7:B:633:HOH:O	2.49	0.65
1:B:83:SER:O	1:B:86:ASP:O	2.15	0.65
1:A:107:ASN:CB	7:A:604:HOH:O	2.44	0.64
1:A:132:THR:C	7:A:603:HOH:O	2.35	0.64
1:B:58:PRO:CD	1:B:147:MET:HE2	2.27	0.64
1:B:185:LYS:HE2	7:B:636:HOH:O	1.97	0.64
1:A:74:TYR:N	1:A:75:PRO:CD	2.61	0.63
1:B:147:MET:O	1:B:148:PHE:HD1	1.82	0.63
1:B:27:LEU:HD23	7:B:605:HOH:O	1.99	0.62
1:B:58:PRO:HB2	1:B:147:MET:HE2	1.82	0.61
1:A:133:ARG:HA	7:A:603:HOH:O	2.01	0.59
1:A:232:ARG:HD3	1:A:425:LEU:HD21	1.84	0.59
1:B:74:TYR:N	1:B:75:PRO:CD	2.66	0.59
1:B:236:PHE:HB3	7:B:618:HOH:O	2.03	0.59
1:B:16:HIS:CE1	7:B:643:HOH:O	2.55	0.58
1:B:442:LYS:HD2	7:B:650:HOH:O	2.03	0.58
1:A:73:TYR:C	1:A:75:PRO:HD2	2.24	0.57
1:B:58:PRO:HB2	1:B:147:MET:CE	2.34	0.57
1:B:134:GLU:O	1:B:138:VAL:HG23	2.04	0.57
1:A:287:TYR:HB2	5:A:505:PG4:H51	1.84	0.57
1:A:3:THR:CG2	7:A:668:HOH:O	2.52	0.57
1:A:3:THR:HG21	7:A:668:HOH:O	2.04	0.56
1:B:29:HIS:HB2	1:B:348:ILE:HG23	1.88	0.56
1:B:17:GLN:HB2	7:B:649:HOH:O	2.06	0.56
1:B:59:SER:N	1:B:147:MET:HE3	2.22	0.54
1:B:88:ARG:HH21	1:B:355:HIS:HB3	1.73	0.54
1:B:8:ASP:OD1	1:B:8:ASP:C	2.45	0.54
1:A:420:SER:CB	7:A:602:HOH:O	2.56	0.53
1:B:419:ASP:N	1:B:419:ASP:OD1	2.41	0.53
1:B:425:LEU:C	1:B:425:LEU:HD23	2.29	0.53
1:B:185:LYS:HG2	7:B:636:HOH:O	2.10	0.52
1:A:106:VAL:HG22	1:A:107:ASN:O	2.09	0.52
1:B:147:MET:O	1:B:148:PHE:CD1	2.61	0.52
1:A:240:ASP:CB	7:A:666:HOH:O	2.52	0.52
1:B:58:PRO:CB	1:B:147:MET:CE	2.88	0.52

Continued on next page...

Continued from previous page...

Atom-1	Atom-2	Interatomic distance (Å)	Clash overlap (Å)
1:A:93:CYS:HA	1:A:97:GLN:OE1	2.10	0.51
1:B:373:TYR:HB2	7:B:654:HOH:O	2.09	0.51
1:B:93:CYS:HA	1:B:97:GLN:OE1	2.09	0.51
1:B:167:LEU:HD11	1:B:290:ASN:ND2	2.26	0.51
1:A:271:LYS:CD	7:A:642:HOH:O	2.30	0.51
1:A:22:ASP:OD1	1:A:94:SER:HB3	2.11	0.50
1:A:147:MET:HE3	1:A:147:MET:HA	1.93	0.50
1:B:88:ARG:HH21	1:B:355:HIS:CB	2.25	0.49
1:A:394:ASN:HD22	1:A:395:LYS:HG3	1.77	0.49
1:B:213:PHE:CD1	1:B:312:TYR:CB	2.95	0.49
1:B:58:PRO:CD	1:B:147:MET:CE	2.90	0.49
1:B:58:PRO:HD2	1:B:147:MET:HE2	1.93	0.49
1:B:59:SER:N	1:B:147:MET:HE1	2.17	0.49
1:B:420:SER:HB3	7:B:601:HOH:O	2.13	0.49
1:B:89:PHE:HE1	7:B:612:HOH:O	1.89	0.48
1:B:375:GLY:C	1:B:377:SER:H	2.17	0.48
1:B:58:PRO:HD2	1:B:147:MET:CE	2.44	0.48
1:B:140:PRO:O	1:B:159:ILE:HA	2.14	0.47
1:A:33:ASP:O	4:A:503:EDO:H21	2.15	0.47
1:A:213:PHE:HB2	1:A:312:TYR:CZ	2.49	0.47
1:B:194:ARG:CD	7:B:605:HOH:O	2.53	0.47
1:B:370:ASP:O	1:B:371:TRP:HD1	1.97	0.47
1:B:208:ALA:N	1:B:209:PRO:CD	2.77	0.47
1:A:133:ARG:N	7:A:603:HOH:O	2.48	0.47
1:B:444:HIS:CE1	7:B:618:HOH:O	2.67	0.47
1:B:425:LEU:HD23	1:B:426:VAL:N	2.29	0.47
1:A:368:PHE:O	5:A:505:PG4:H52	2.15	0.47
1:A:140:PRO:O	1:A:159:ILE:HA	2.15	0.47
1:B:72:HIS:HD2	7:B:633:HOH:O	1.92	0.46
1:A:42:TYR:CD1	1:A:42:TYR:N	2.84	0.46
1:B:58:PRO:HG3	1:B:383:TRP:CE2	2.51	0.45
1:B:37:HIS:HB3	7:B:634:HOH:O	2.16	0.45
1:B:213:PHE:CE1	1:B:312:TYR:HB3	2.52	0.44
1:B:271:LYS:NZ	1:B:401:GLU:OE1	2.42	0.44
1:B:295:MET:HE3	1:B:345:ARG:NH1	2.33	0.44
1:A:37:HIS:HB2	4:A:503:EDO:H22	1.99	0.44
1:A:101:LEU:HD11	1:A:145:VAL:HG23	2.00	0.44
1:A:420:SER:HB3	7:A:602:HOH:O	2.17	0.44
1:A:85:SER:OG	1:A:86:ASP:N	2.50	0.44
1:B:27:LEU:HB3	1:B:31:ASP:CB	2.48	0.44
1:B:58:PRO:HG3	1:B:383:TRP:CZ2	2.52	0.44

Continued on next page...

Continued from previous page...

Atom-1	Atom-2	Interatomic distance (Å)	Clash overlap (Å)
1:B:63:SER:CB	7:B:603:HOH:O	2.66	0.44
1:B:194:ARG:CZ	7:B:605:HOH:O	2.66	0.43
1:A:208:ALA:N	1:A:209:PRO:CD	2.81	0.43
1:B:375:GLY:C	1:B:377:SER:N	2.72	0.43
1:A:195:GLU:HB2	7:A:609:HOH:O	2.19	0.43
1:A:3:THR:HG23	1:A:3:THR:O	2.19	0.43
1:B:19:LEU:HD11	1:B:93:CYS:HB3	2.01	0.42
1:B:185:LYS:CE	7:B:636:HOH:O	2.59	0.42
1:A:2:ALA:O	1:A:3:THR:HG22	2.18	0.42
1:A:5:GLU:O	1:A:104:ALA:HB1	2.19	0.42
1:A:213:PHE:CE1	1:A:312:TYR:HB3	2.54	0.42
1:B:311:MET:HE1	1:B:338:ASN:HB2	2.02	0.42
1:A:58:PRO:HG3	1:A:383:TRP:CZ2	2.54	0.42
1:A:59:SER:O	1:A:63:SER:OG	2.37	0.42
1:A:74:TYR:CG	1:A:75:PRO:HD3	2.55	0.41
1:A:169:ALA:HB1	2:A:501:T83:CAA	2.26	0.41
1:B:194:ARG:NH1	7:B:605:HOH:O	2.52	0.41
1:A:107:ASN:CA	7:A:604:HOH:O	2.68	0.41
1:A:15:SER:HA	7:A:619:HOH:O	2.21	0.41
1:A:369:THR:CG2	5:A:505:PG4:H41	2.41	0.41
1:A:394:ASN:ND2	1:A:395:LYS:HG3	2.35	0.41
1:B:70:LEU:HD23	1:B:70:LEU:HA	1.91	0.41
1:A:291:ILE:C	1:A:291:ILE:HD12	2.41	0.41
1:B:27:LEU:HB3	1:B:31:ASP:HB2	2.02	0.41
1:B:419:ASP:CG	7:B:622:HOH:O	2.59	0.41
1:A:21:ASN:O	1:A:22:ASP:O	2.39	0.40
1:A:368:PHE:O	5:A:505:PG4:C5	2.69	0.40
1:B:14:PRO:HA	1:B:67:ALA:O	2.22	0.40
1:B:29:HIS:CB	1:B:348:ILE:HG23	2.52	0.40
1:B:73:TYR:C	1:B:75:PRO:HD2	2.41	0.40

All (1) symmetry-related close contacts are listed below. The label for Atom-2 includes the symmetry operator and encoded unit-cell translations to be applied.

Atom-1	Atom-2	Interatomic distance (Å)	Clash overlap (Å)
1:A:211:ARG:NH2	1:A:279:GLU:OE2[4_465]	2.16	0.04

5.3 Torsion angles [i](#)

5.3.1 Protein backbone [i](#)

In the following table, the Percentiles column shows the percent Ramachandran outliers of the chain as a percentile score with respect to all X-ray entries followed by that with respect to entries of similar resolution.

The Analysed column shows the number of residues for which the backbone conformation was analysed, and the total number of residues.

Mol	Chain	Analysed	Favoured	Allowed	Outliers	Percentiles	
1	A	419/451 (93%)	393 (94%)	23 (6%)	3 (1%)	22	36
1	B	401/451 (89%)	382 (95%)	12 (3%)	7 (2%)	9	14
All	All	820/902 (91%)	775 (94%)	35 (4%)	10 (1%)	13	22

All (10) Ramachandran outliers are listed below:

Mol	Chain	Res	Type
1	A	22	ASP
1	B	22	ASP
1	B	149	GLN
1	B	150	CYS
1	B	151	GLY
1	B	376	HIS
1	B	83	SER
1	A	120	ASP
1	A	151	GLY
1	B	192	TRP

5.3.2 Protein sidechains [i](#)

In the following table, the Percentiles column shows the percent sidechain outliers of the chain as a percentile score with respect to all X-ray entries followed by that with respect to entries of similar resolution.

The Analysed column shows the number of residues for which the sidechain conformation was analysed, and the total number of residues.

Mol	Chain	Analysed	Rotameric	Outliers	Percentiles	
1	A	361/380 (95%)	326 (90%)	35 (10%)	8	14
1	B	348/380 (92%)	324 (93%)	24 (7%)	15	28
All	All	709/760 (93%)	650 (92%)	59 (8%)	11	20

All (59) residues with a non-rotameric sidechain are listed below:

Mol	Chain	Res	Type
1	A	4	LEU
1	A	21	ASN
1	A	24	THR
1	A	29	HIS
1	A	42	TYR
1	A	43	LEU
1	A	47	SER
1	A	59	SER
1	A	61	VAL
1	A	63	SER
1	A	81	ARG
1	A	83	SER
1	A	85	SER
1	A	87	ASN
1	A	120	ASP
1	A	128	VAL
1	A	133	ARG
1	A	147	MET
1	A	184	THR
1	A	185	LYS
1	A	233	ASP
1	A	240	ASP
1	A	251	GLU
1	A	252	LYS
1	A	256	ASN
1	A	271	LYS
1	A	288	SER
1	A	289	ILE
1	A	293	ARG
1	A	299	LEU
1	A	321	ILE
1	A	388	THR
1	A	394	ASN
1	A	420	SER
1	A	426	VAL
1	B	21	ASN
1	B	29	HIS
1	B	42	TYR
1	B	47	SER
1	B	61	VAL
1	B	63	SER
1	B	81	ARG

Continued on next page...

Continued from previous page...

Mol	Chain	Res	Type
1	B	128	VAL
1	B	184	THR
1	B	185	LYS
1	B	187	SER
1	B	256	ASN
1	B	271	LYS
1	B	288	SER
1	B	289	ILE
1	B	299	LEU
1	B	301	LYS
1	B	321	ILE
1	B	333	LYS
1	B	336	LYS
1	B	388	THR
1	B	403	CYS
1	B	419	ASP
1	B	423	LYS

Sometimes sidechains can be flipped to improve hydrogen bonding and reduce clashes. All (7) such sidechains are listed below:

Mol	Chain	Res	Type
1	A	13	GLN
1	A	161	HIS
1	A	256	ASN
1	A	394	ASN
1	B	13	GLN
1	B	17	GLN
1	B	256	ASN

5.3.3 RNA [i](#)

There are no RNA molecules in this entry.

5.4 Non-standard residues in protein, DNA, RNA chains [i](#)

There are no non-standard protein/DNA/RNA residues in this entry.

5.5 Carbohydrates [i](#)

There are no monosaccharides in this entry.

5.6 Ligand geometry

Of 7 ligands modelled in this entry, 2 are monoatomic - leaving 5 for Mogul analysis.

In the following table, the Counts columns list the number of bonds (or angles) for which Mogul statistics could be retrieved, the number of bonds (or angles) that are observed in the model and the number of bonds (or angles) that are defined in the Chemical Component Dictionary. The Link column lists molecule types, if any, to which the group is linked. The Z score for a bond length (or angle) is the number of standard deviations the observed value is removed from the expected value. A bond length (or angle) with $|Z| > 2$ is considered an outlier worth inspection. RMSZ is the root-mean-square of all Z scores of the bond lengths (or angles).

Mol	Type	Chain	Res	Link	Bond lengths			Bond angles		
					Counts	RMSZ	# Z > 2	Counts	RMSZ	# Z > 2
6	ACT	A	506	-	3,3,3	2.75	2 (66%)	3,3,3	1.31	0
2	T83	A	501	-	15,15,15	2.10	4 (26%)	21,21,21	4.03	14 (66%)
4	EDO	A	504	-	3,3,3	1.03	0	2,2,2	1.14	0
5	PG4	A	505	-	12,12,12	1.98	7 (58%)	11,11,11	2.39	5 (45%)
4	EDO	A	503	-	3,3,3	1.50	0	2,2,2	1.63	1 (50%)

In the following table, the Chirals column lists the number of chiral outliers, the number of chiral centers analysed, the number of these observed in the model and the number defined in the Chemical Component Dictionary. Similar counts are reported in the Torsion and Rings columns. '-' means no outliers of that kind were identified.

Mol	Type	Chain	Res	Link	Chirals	Torsions	Rings
4	EDO	A	504	-	-	1/1/1/1	-
5	PG4	A	505	-	-	8/10/10/10	-
2	T83	A	501	-	-	2/2/2/2	0/2/2/2
4	EDO	A	503	-	-	0/1/1/1	-

All (13) bond length outliers are listed below:

Mol	Chain	Res	Type	Atoms	Z	Observed(Å)	Ideal(Å)
2	A	501	T83	CAD-CAE	5.43	1.43	1.34
6	A	506	ACT	O-C	3.43	1.38	1.22
2	A	501	T83	CAF-CAN	3.41	1.45	1.38
2	A	501	T83	OAC-CAJ	2.83	1.42	1.36
6	A	506	ACT	CH3-C	2.73	1.60	1.49
2	A	501	T83	CAG-CAK	2.57	1.43	1.38
5	A	505	PG4	O3-C4	2.48	1.52	1.42
5	A	505	PG4	O4-C7	2.40	1.52	1.42
5	A	505	PG4	C6-C5	2.30	1.60	1.49
5	A	505	PG4	O4-C6	2.26	1.51	1.42

Continued on next page...

Continued from previous page...

Mol	Chain	Res	Type	Atoms	Z	Observed(Å)	Ideal(Å)
5	A	505	PG4	C7-C8	2.22	1.61	1.49
5	A	505	PG4	O2-C3	2.14	1.51	1.42
5	A	505	PG4	C4-C3	2.05	1.59	1.49

All (20) bond angle outliers are listed below:

Mol	Chain	Res	Type	Atoms	Z	Observed(°)	Ideal(°)
2	A	501	T83	CAA-OAH-CAK	-12.43	98.76	117.53
2	A	501	T83	CAG-CAK-CAJ	7.35	127.98	120.06
2	A	501	T83	OAI-CAL-CAD	5.23	125.09	117.12
5	A	505	PG4	O3-C5-C6	5.14	133.56	110.39
2	A	501	T83	OAB-CAL-CAD	-3.85	118.84	126.00
2	A	501	T83	CAE-CAD-CAL	-3.63	116.73	121.43
2	A	501	T83	CAF-CAJ-CAK	-3.38	116.34	119.81
2	A	501	T83	CAN-CAM-CAE	3.26	122.31	117.86
2	A	501	T83	CAM-CAE-CAD	-3.16	117.20	121.54
5	A	505	PG4	C7-O4-C6	3.05	126.48	113.29
5	A	505	PG4	O3-C4-C3	3.04	124.11	110.39
2	A	501	T83	CAM-CAG-CAK	-3.04	115.78	120.73
2	A	501	T83	CAF-CAN-CAM	2.68	125.65	120.07
2	A	501	T83	CAG-CAM-CAN	-2.66	116.23	119.40
5	A	505	PG4	C3-O2-C2	2.47	123.99	113.29
5	A	505	PG4	O4-C7-C8	2.37	120.48	110.07
2	A	501	T83	OAH-CAK-CAG	-2.35	120.07	124.12
4	A	503	EDO	O2-C2-C1	2.30	128.42	111.91
2	A	501	T83	CAN-OAI-CAL	-2.22	118.71	121.65
2	A	501	T83	OAI-CAN-CAM	-2.16	117.91	120.55

There are no chirality outliers.

All (11) torsion outliers are listed below:

Mol	Chain	Res	Type	Atoms
5	A	505	PG4	C6-C5-O3-C4
2	A	501	T83	CAJ-CAK-OAH-CAA
2	A	501	T83	CAG-CAK-OAH-CAA
5	A	505	PG4	O4-C7-C8-O5
5	A	505	PG4	O1-C1-C2-O2
5	A	505	PG4	O2-C3-C4-O3
5	A	505	PG4	C5-C6-O4-C7
5	A	505	PG4	C8-C7-O4-C6
4	A	504	EDO	O1-C1-C2-O2
5	A	505	PG4	C1-C2-O2-C3

Continued on next page...

Continued from previous page...

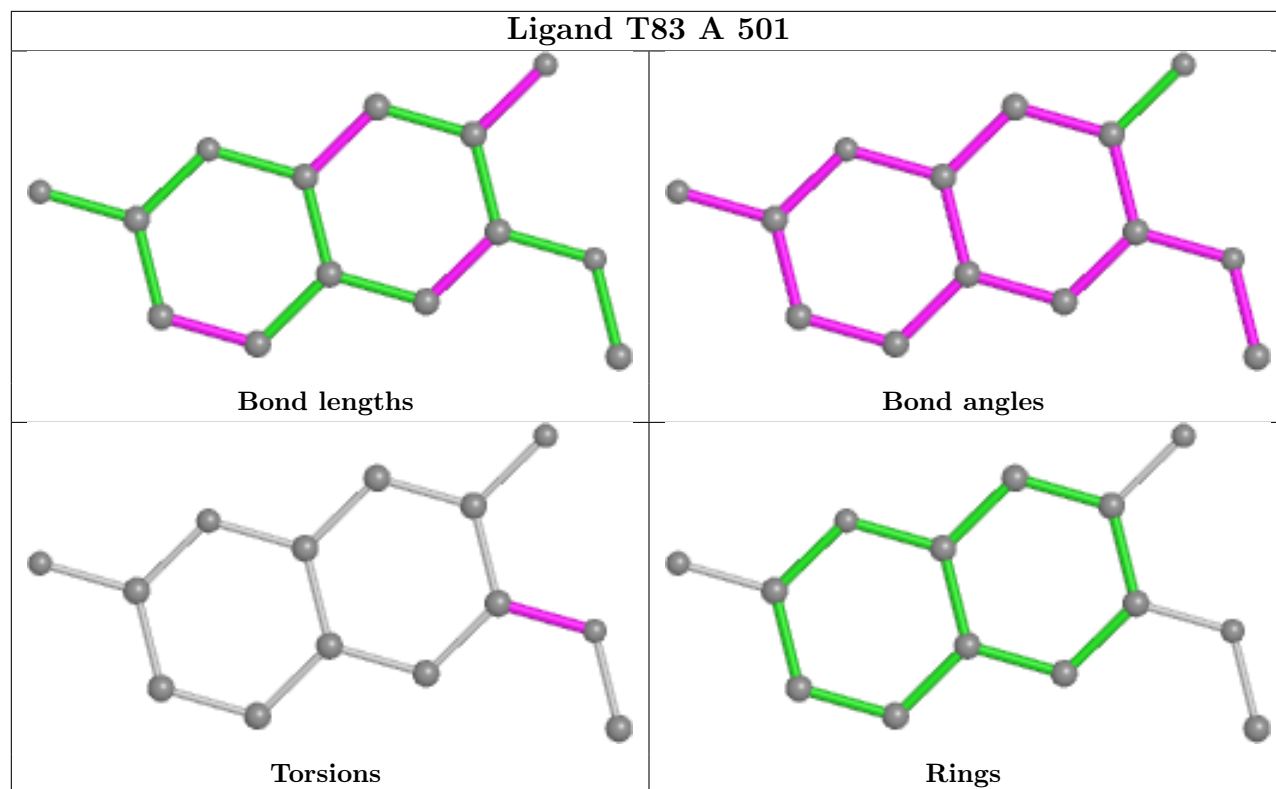
Mol	Chain	Res	Type	Atoms
5	A	505	PG4	O3-C5-C6-O4

There are no ring outliers.

5 monomers are involved in 17 short contacts:

Mol	Chain	Res	Type	Clashes	Symm-Clashes
6	A	506	ACT	1	0
2	A	501	T83	4	0
4	A	504	EDO	2	0
5	A	505	PG4	8	0
4	A	503	EDO	2	0

The following is a two-dimensional graphical depiction of Mogul quality analysis of bond lengths, bond angles, torsion angles, and ring geometry for all instances of the Ligand of Interest. In addition, ligands with molecular weight > 250 and outliers as shown on the validation Tables will also be included. For torsion angles, if less than 5% of the Mogul distribution of torsion angles is within 10 degrees of the torsion angle in question, then that torsion angle is considered an outlier. Any bond that is central to one or more torsion angles identified as an outlier by Mogul will be highlighted in the graph. For rings, the root-mean-square deviation (RMSD) between the ring in question and similar rings identified by Mogul is calculated over all ring torsion angles. If the average RMSD is greater than 60 degrees and the minimal RMSD between the ring in question and any Mogul-identified rings is also greater than 60 degrees, then that ring is considered an outlier. The outliers are highlighted in purple. The color gray indicates Mogul did not find sufficient equivalents in the CSD to analyse the geometry.



5.7 Other polymers [i](#)

There are no such residues in this entry.

5.8 Polymer linkage issues [i](#)

There are no chain breaks in this entry.

6 Fit of model and data [i](#)

6.1 Protein, DNA and RNA chains [i](#)

In the following table, the column labelled ‘#RSRZ > 2’ contains the number (and percentage) of RSRZ outliers, followed by percent RSRZ outliers for the chain as percentile scores relative to all X-ray entries and entries of similar resolution. The OWAB column contains the minimum, median, 95th percentile and maximum values of the occupancy-weighted average B-factor per residue. The column labelled ‘Q < 0.9’ lists the number of (and percentage) of residues with an average occupancy less than 0.9.

Mol	Chain	Analysed	<RSRZ>	#RSRZ>2	OWAB(Å ²)	Q<0.9
1	A	426/451 (94%)	-0.01	2 (0%) 91 91	46, 68, 104, 133	0
1	B	409/451 (90%)	0.22	15 (3%) 41 44	65, 86, 111, 132	0
All	All	835/902 (92%)	0.11	17 (2%) 65 67	46, 79, 108, 133	0

All (17) RSRZ outliers are listed below:

Mol	Chain	Res	Type	RSRZ
1	B	151	GLY	7.1
1	B	150	CYS	6.1
1	B	408	TYR	5.6
1	B	123	PHE	4.9
1	B	16	HIS	3.8
1	A	417	LYS	3.1
1	B	84	ALA	3.0
1	B	236	PHE	2.7
1	B	85	SER	2.6
1	B	21	ASN	2.3
1	B	254	GLY	2.3
1	A	408	TYR	2.2
1	B	149	GLN	2.2
1	B	448	PHE	2.1
1	B	152	GLY	2.1
1	B	82	ARG	2.1
1	B	20	SER	2.0

6.2 Non-standard residues in protein, DNA, RNA chains [i](#)

There are no non-standard protein/DNA/RNA residues in this entry.

6.3 Carbohydrates [i](#)

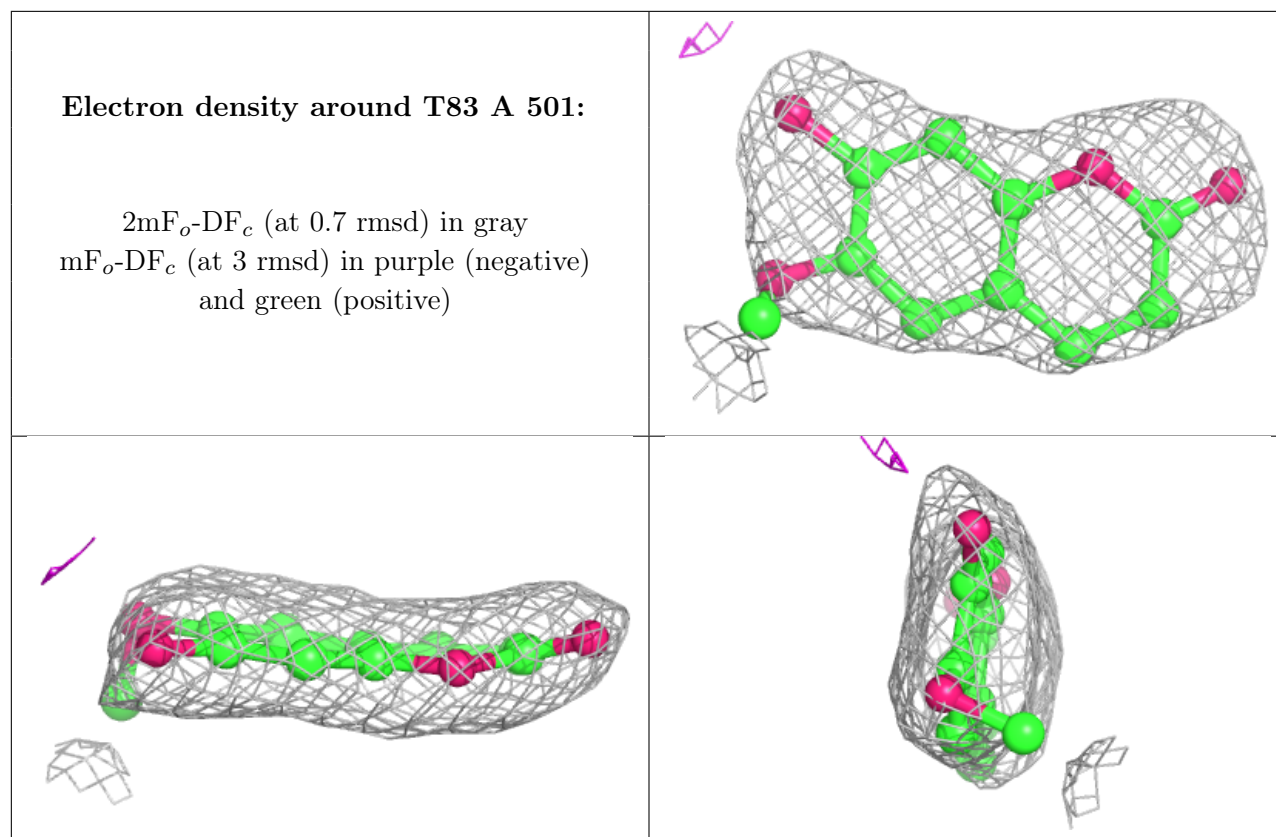
There are no monosaccharides in this entry.

6.4 Ligands [i](#)

In the following table, the Atoms column lists the number of modelled atoms in the group and the number defined in the chemical component dictionary. The B-factors column lists the minimum, median, 95th percentile and maximum values of B factors of atoms in the group. The column labelled 'Q< 0.9' lists the number of atoms with occupancy less than 0.9.

Mol	Type	Chain	Res	Atoms	RSCC	RSR	B-factors(Å ²)	Q<0.9
5	PG4	A	505	13/13	0.86	0.33	67,76,87,87	0
4	EDO	A	504	4/4	0.89	0.19	71,72,76,79	0
3	CA	A	502	1/1	0.93	0.18	60,60,60,60	0
3	CA	B	501	1/1	0.93	0.13	80,80,80,80	0
4	EDO	A	503	4/4	0.95	0.20	65,66,78,80	0
2	T83	A	501	14/14	0.96	0.23	62,68,83,105	0
6	ACT	A	506	4/4	0.97	0.20	56,63,65,78	0

The following is a graphical depiction of the model fit to experimental electron density of all instances of the Ligand of Interest. In addition, ligands with molecular weight > 250 and outliers as shown on the geometry validation Tables will also be included. Each fit is shown from different orientation to approximate a three-dimensional view.



6.5 Other polymers [i](#)

There are no such residues in this entry.