



Full wwPDB X-ray Structure Validation Report ⓘ

Mar 8, 2018 – 11:20 pm GMT

PDB ID : 5DTV
Title : Crystal Structure of the ER-alpha Ligand-binding Domain in complex with a dimethyl-substituted, 3,4-diarylthiophene dioxide core ligand
Authors : Nwachukwu, J.C.; Srinivasan, S.; Zheng, Y.; Wang, S.; Min, J.; Dong, C.; Liao, Z.; Cavett, V.; Nowak, J.; Houtman, R.; Carlson, K.E.; Josan, J.S.; Elemento, O.; Katzenellenbogen, J.A.; Zhou, H.B.; Nettles, K.W.
Deposited on : 2015-09-18
Resolution : 2.29 Å(reported)

This is a Full wwPDB X-ray Structure Validation Report for a publicly released PDB entry.

We welcome your comments at validation@mail.wwpdb.org

A user guide is available at

<https://www.wwpdb.org/validation/2017/XrayValidationReportHelp>

with specific help available everywhere you see the ⓘ symbol.

The following versions of software and data (see [references ⓘ](#)) were used in the production of this report:

MolProbity : 4.02b-467
Mogul : 1.7.3 (157068), CSD as539be (2018)
Xtriage (Phenix) : 1.13
EDS : trunk30967
Percentile statistics : 20171227.v01 (using entries in the PDB archive December 27th 2017)
Refmac : 5.8.0158
CCP4 : 7.0 (Gargrove)
Ideal geometry (proteins) : Engh & Huber (2001)
Ideal geometry (DNA, RNA) : Parkinson et al. (1996)
Validation Pipeline (wwPDB-VP) : trunk30967

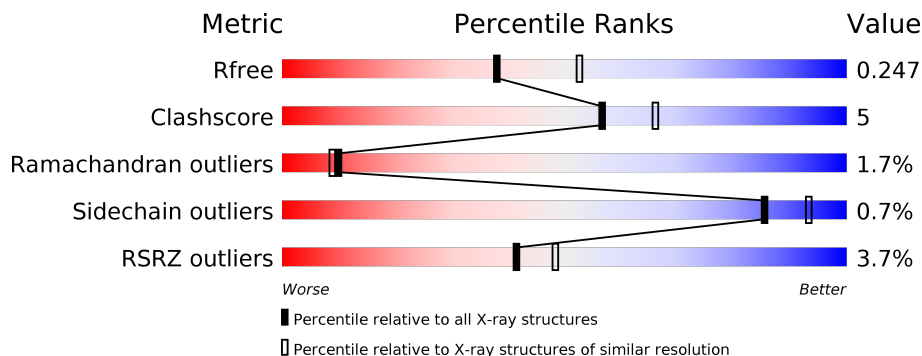
1 Overall quality at a glance

The following experimental techniques were used to determine the structure:

X-RAY DIFFRACTION

The reported resolution of this entry is 2.29 Å.

Percentile scores (ranging between 0-100) for global validation metrics of the entry are shown in the following graphic. The table shows the number of entries on which the scores are based.



Metric	Whole archive (#Entries)	Similar resolution (#Entries, resolution range(Å))
R_{free}	111664	4477 (2.30-2.30)
Clashscore	122126	5072 (2.30-2.30)
Ramachandran outliers	120053	5022 (2.30-2.30)
Sidechain outliers	120020	5021 (2.30-2.30)
RSRZ outliers	108989	4374 (2.30-2.30)

The table below summarises the geometric issues observed across the polymeric chains and their fit to the electron density. The red, orange, yellow and green segments on the lower bar indicate the fraction of residues that contain outliers for ≥ 3 , 2, 1 and 0 types of geometric quality criteria. A grey segment represents the fraction of residues that are not modelled. The numeric value for each fraction is indicated below the corresponding segment, with a dot representing fractions $\leq 5\%$. The upper red bar (where present) indicates the fraction of residues that have poor fit to the electron density. The numeric value is given above the bar.

Mol	Chain	Length	Quality of chain
1	A	257	<p>2% 81% 8% 11%</p>
1	B	257	<p>4% 81% 9% 7%</p>
2	C	14	<p>57% 7% 36%</p>
2	D	14	<p>29% 21% 29% 14% 36%</p>

2 Entry composition

There are 4 unique types of molecules in this entry. The entry contains 3830 atoms, of which 0 are hydrogens and 0 are deuteriums.

In the tables below, the ZeroOcc column contains the number of atoms modelled with zero occupancy, the AltConf column contains the number of residues with at least one atom in alternate conformation and the Trace column contains the number of residues modelled with at most 2 atoms.

- Molecule 1 is a protein called Estrogen receptor.

Mol	Chain	Residues	Atoms					ZeroOcc	AltConf	Trace
			Total	C	N	O	S			
1	A	230	1801	1152	308	322	19	0	0	0
1	B	238	1815	1159	311	326	19	0	0	0

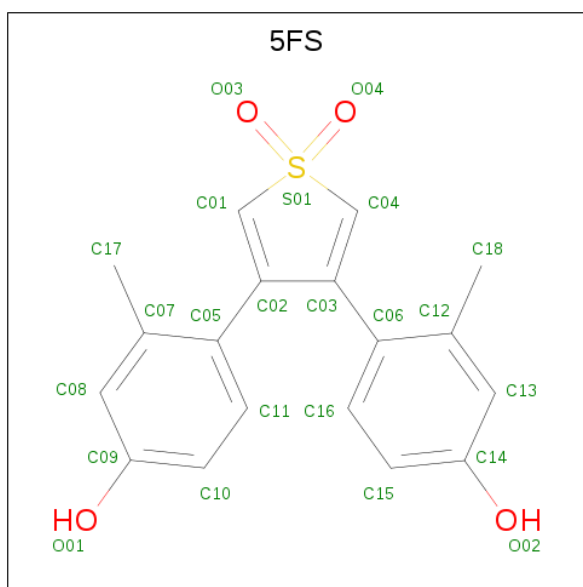
There are 2 discrepancies between the modelled and reference sequences:

Chain	Residue	Modelled	Actual	Comment	Reference
A	537	SER	TYR	engineered mutation	UNP P03372
B	537	SER	TYR	engineered mutation	UNP P03372

- Molecule 2 is a protein called Nuclear receptor coactivator 2.

Mol	Chain	Residues	Atoms				ZeroOcc	AltConf	Trace
			Total	C	N	O			
2	C	9	62	42	11	9	0	0	0
2	D	9	73	48	13	12	0	0	0

- Molecule 3 is 3,4-bis(4-hydroxy-2-methylphenyl)-1H-1lambda 6 -thiophene-1,1-dione (three-letter code: 5FS) (formula: C₁₈H₁₆O₄S).



Mol	Chain	Residues	Atoms			ZeroOcc	AltConf	
3	A	1	Total	C	O	S	0	0
			23	18	4	1		
3	B	1	Total	C	O	S	0	0
			23	18	4	1		

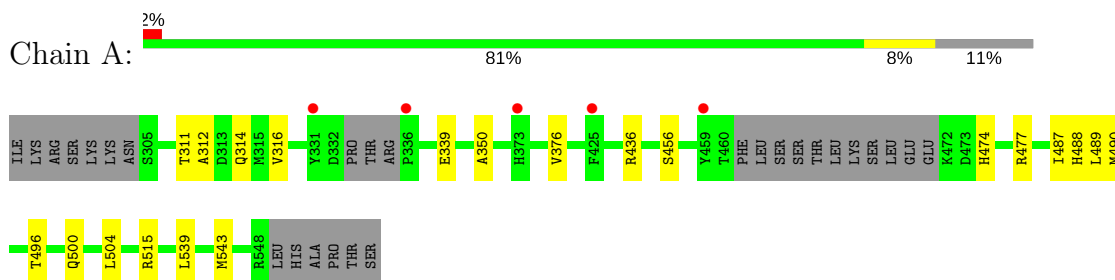
- Molecule 4 is water.

Mol	Chain	Residues	Atoms		ZeroOcc	AltConf
4	A	15	Total	O	0	0
			15	15		
4	C	1	Total	O	0	0
			1	1		
4	B	16	Total	O	0	0
			16	16		
4	D	1	Total	O	0	0
			1	1		

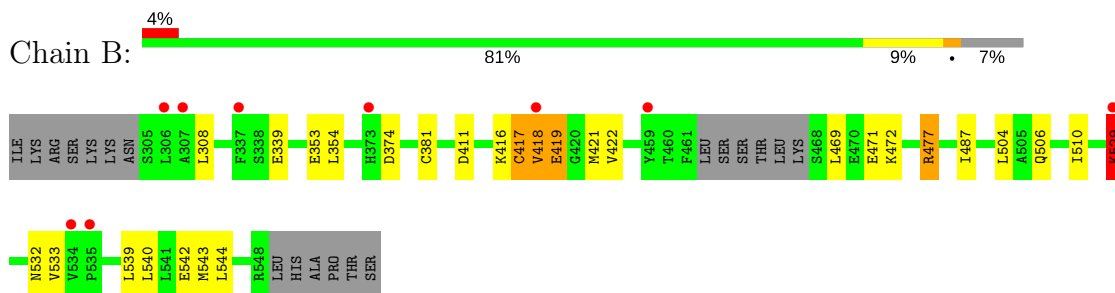
3 Residue-property plots [i](#)

These plots are drawn for all protein, RNA and DNA chains in the entry. The first graphic for a chain summarises the proportions of the various outlier classes displayed in the second graphic. The second graphic shows the sequence view annotated by issues in geometry and electron density. Residues are color-coded according to the number of geometric quality criteria for which they contain at least one outlier: green = 0, yellow = 1, orange = 2 and red = 3 or more. A red dot above a residue indicates a poor fit to the electron density ($RSRZ > 2$). Stretches of 2 or more consecutive residues without any outlier are shown as a green connector. Residues present in the sample, but not in the model, are shown in grey.

- Molecule 1: Estrogen receptor



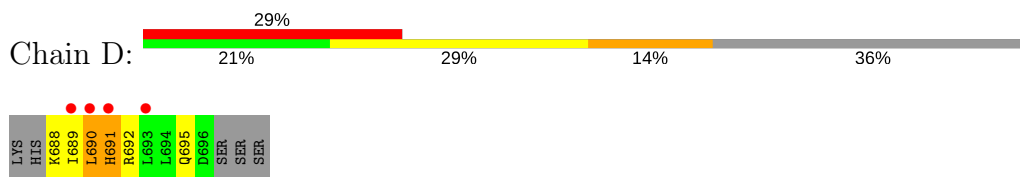
- Molecule 1: Estrogen receptor



- Molecule 2: Nuclear receptor coactivator 2



- Molecule 2: Nuclear receptor coactivator 2



4 Data and refinement statistics

Property	Value	Source
Space group	P 1 21 1	Depositor
Cell constants a, b, c, α , β , γ	55.05Å 82.83Å 58.90Å 90.00° 110.53° 90.00°	Depositor
Resolution (Å)	46.71 – 2.29 46.71 – 2.29	Depositor EDS
% Data completeness (in resolution range)	92.8 (46.71-2.29) 92.8 (46.71-2.29)	Depositor EDS
R_{merge}	0.07	Depositor
R_{sym}	(Not available)	Depositor
$\langle I/\sigma(I) \rangle$ ¹	1.79 (at 2.29Å)	Xtrriage
Refinement program	PHENIX 1.9_1690	Depositor
R, R_{free}	0.207 , 0.247 0.208 , 0.247	Depositor DCC
R_{free} test set	2003 reflections (9.11%)	wwPDB-VP
Wilson B-factor (Å ²)	46.8	Xtrriage
Anisotropy	0.595	Xtrriage
Bulk solvent k_{sol} (e/Å ³), B_{sol} (Å ²)	0.30 , 47.1	EDS
L-test for twinning ²	$\langle L \rangle = 0.50$, $\langle L^2 \rangle = 0.33$	Xtrriage
Estimated twinning fraction	No twinning to report.	Xtrriage
F_o, F_c correlation	0.95	EDS
Total number of atoms	3830	wwPDB-VP
Average B, all atoms (Å ²)	74.0	wwPDB-VP

Xtrriage's analysis on translational NCS is as follows: *The largest off-origin peak in the Patterson function is 6.10% of the height of the origin peak. No significant pseudotranslation is detected.*

¹Intensities estimated from amplitudes.

²Theoretical values of $\langle |L| \rangle$, $\langle L^2 \rangle$ for acentric reflections are 0.5, 0.333 respectively for untwinned datasets, and 0.375, 0.2 for perfectly twinned datasets.

5 Model quality [i](#)

5.1 Standard geometry [i](#)

Bond lengths and bond angles in the following residue types are not validated in this section: 5FS

The Z score for a bond length (or angle) is the number of standard deviations the observed value is removed from the expected value. A bond length (or angle) with $|Z| > 5$ is considered an outlier worth inspection. RMSZ is the root-mean-square of all Z scores of the bond lengths (or angles).

Mol	Chain	Bond lengths		Bond angles	
		RMSZ	# Z >5	RMSZ	# Z >5
1	A	0.20	0/1833	0.35	0/2479
1	B	0.22	0/1846	0.41	0/2501
2	C	0.22	0/62	0.45	0/84
2	D	0.31	0/73	0.63	0/97
All	All	0.21	0/3814	0.39	0/5161

Chiral center outliers are detected by calculating the chiral volume of a chiral center and verifying if the center is modelled as a planar moiety or with the opposite hand. A planarity outlier is detected by checking planarity of atoms in a peptide group, atoms in a mainchain group or atoms of a sidechain that are expected to be planar.

Mol	Chain	#Chirality outliers	#Planarity outliers
1	B	0	1

There are no bond length outliers.

There are no bond angle outliers.

There are no chirality outliers.

All (1) planarity outliers are listed below:

Mol	Chain	Res	Type	Group
1	B	529	LYS	Peptide

5.2 Too-close contacts [i](#)

In the following table, the Non-H and H(model) columns list the number of non-hydrogen atoms and hydrogen atoms in the chain respectively. The H(added) column lists the number of hydrogen atoms added and optimized by MolProbity. The Clashes column lists the number of clashes within the asymmetric unit, whereas Symm-Clashes lists symmetry related clashes.

Mol	Chain	Non-H	H(model)	H(added)	Clashes	Symm-Clashes
1	A	1801	0	1815	13	0
1	B	1815	0	1798	19	0
2	C	62	0	58	1	0
2	D	73	0	77	10	0
3	A	23	0	0	2	0
3	B	23	0	0	1	0
4	A	15	0	0	2	0
4	B	16	0	0	0	0
4	C	1	0	0	0	0
4	D	1	0	0	1	0
All	All	3830	0	3748	41	0

The all-atom clashscore is defined as the number of clashes found per 1000 atoms (including hydrogen atoms). The all-atom clashscore for this structure is 5.

All (41) close contacts within the same asymmetric unit are listed below, sorted by their clash magnitude.

Atom-1	Atom-2	Interatomic distance (Å)	Clash overlap (Å)
2:D:688:LYS:HE2	2:D:691:HIS:HB2	1.33	1.10
1:B:417:CYS:O	1:B:419:GLU:N	2.25	0.69
1:B:417:CYS:SG	1:B:418:VAL:N	2.61	0.68
4:A:715:HOH:O	1:B:381:CYS:SG	2.56	0.63
1:B:308:LEU:HD11	1:B:477:ARG:HD3	1.81	0.62
1:B:353:GLU:OE1	3:B:601:5FS:O01	2.23	0.57
1:A:487:ILE:HD11	1:A:504:LEU:HD22	1.87	0.56
1:A:376:VAL:HG13	2:C:690:LEU:HD23	1.88	0.54
1:A:316:VAL:HG21	1:A:489:LEU:HD21	1.90	0.53
2:D:688:LYS:HB3	2:D:691:HIS:CB	2.40	0.51
2:D:695:GLN:NE2	4:D:701:HOH:O	2.42	0.51
1:A:311:THR:HG23	1:A:314:GLN:H	1.76	0.50
1:B:416:LYS:HA	1:B:422:VAL:HB	1.94	0.49
1:B:471:GLU:HB2	1:B:472:LYS:HG3	1.93	0.49
1:B:411:ASP:OD1	1:B:411:ASP:N	2.41	0.49
1:B:529:LYS:HA	1:B:532:ASN:H	1.79	0.48
1:B:339:GLU:HG3	1:B:418:VAL:HA	1.96	0.47
1:A:436:ARG:NH2	4:A:702:HOH:O	2.07	0.46
1:B:543:MET:SD	2:D:690:LEU:HD22	2.55	0.46
2:D:689:ILE:O	2:D:691:HIS:N	2.49	0.46
1:A:496:THR:O	1:A:500:GLN:HG3	2.15	0.46
1:B:542:GLU:OE2	2:D:688:LYS:HA	2.16	0.45
1:B:354:LEU:HD12	1:B:540:LEU:HD12	1.99	0.45
2:D:695:GLN:N	2:D:695:GLN:OE1	2.45	0.44

Continued on next page...

Continued from previous page...

Atom-1	Atom-2	Interatomic distance (Å)	Clash overlap (Å)
1:A:312:ALA:HB3	1:A:488:HIS:ND1	2.32	0.44
1:B:417:CYS:C	1:B:419:GLU:H	2.19	0.43
1:A:539:LEU:O	1:A:543:MET:HG2	2.18	0.43
1:B:418:VAL:HG23	1:B:421:MET:HB3	2.01	0.42
1:B:506:GLN:O	1:B:510:ILE:HG12	2.18	0.42
1:A:474:HIS:HA	1:A:477:ARG:HD2	2.01	0.42
1:A:350:ALA:HB2	3:A:601:5FS:C10	2.50	0.42
1:B:539:LEU:O	1:B:543:MET:HG2	2.19	0.42
1:B:544:LEU:HD12	1:B:544:LEU:HA	1.89	0.41
2:D:688:LYS:HE2	2:D:691:HIS:CB	2.24	0.41
1:A:474:HIS:HA	1:A:477:ARG:HB2	2.01	0.41
2:D:691:HIS:O	2:D:695:GLN:NE2	2.53	0.41
3:A:601:5FS:C06	3:A:601:5FS:C11	2.96	0.41
1:B:487:ILE:HD11	1:B:504:LEU:HD22	2.03	0.41
1:A:456:SER:HA	1:A:515:ARG:NH2	2.36	0.41
2:D:692:ARG:HA	2:D:695:GLN:NE2	2.36	0.40
1:A:490:MET:HE2	1:A:500:GLN:HA	2.04	0.40

There are no symmetry-related clashes.

5.3 Torsion angles [i](#)

5.3.1 Protein backbone [i](#)

In the following table, the Percentiles column shows the percent Ramachandran outliers of the chain as a percentile score with respect to all X-ray entries followed by that with respect to entries of similar resolution.

The Analysed column shows the number of residues for which the backbone conformation was analysed, and the total number of residues.

Mol	Chain	Analysed	Favoured	Allowed	Outliers	Percentiles	
1	A	224/257 (87%)	219 (98%)	5 (2%)	0	100	100
1	B	234/257 (91%)	218 (93%)	10 (4%)	6 (3%)	6	4
2	C	7/14 (50%)	7 (100%)	0	0	100	100
2	D	7/14 (50%)	4 (57%)	1 (14%)	2 (29%)	0	0
All	All	472/542 (87%)	448 (95%)	16 (3%)	8 (2%)	10	9

All (8) Ramachandran outliers are listed below:

Mol	Chain	Res	Type
1	B	418	VAL
1	B	533	VAL
2	D	691	HIS
1	B	374	ASP
1	B	417	CYS
1	B	419	GLU
2	D	690	LEU
1	B	469	LEU

5.3.2 Protein sidechains [i](#)

In the following table, the Percentiles column shows the percent sidechain outliers of the chain as a percentile score with respect to all X-ray entries followed by that with respect to entries of similar resolution.

The Analysed column shows the number of residues for which the sidechain conformation was analysed, and the total number of residues.

Mol	Chain	Analysed	Rotameric	Outliers	Percentiles	
1	A	198/232 (85%)	197 (100%)	1 (0%)	90	96
1	B	192/232 (83%)	190 (99%)	2 (1%)	78	89
2	C	5/14 (36%)	5 (100%)	0	100	100
2	D	8/14 (57%)	8 (100%)	0	100	100
All	All	403/492 (82%)	400 (99%)	3 (1%)	85	93

All (3) residues with a non-rotameric sidechain are listed below:

Mol	Chain	Res	Type
1	A	339	GLU
1	B	477	ARG
1	B	529	LYS

Some sidechains can be flipped to improve hydrogen bonding and reduce clashes. There are no such sidechains identified.

5.3.3 RNA [i](#)

There are no RNA molecules in this entry.

5.4 Non-standard residues in protein, DNA, RNA chains [i](#)

There are no non-standard protein/DNA/RNA residues in this entry.

5.5 Carbohydrates [i](#)

There are no carbohydrates in this entry.

5.6 Ligand geometry [i](#)

2 ligands are modelled in this entry.

In the following table, the Counts columns list the number of bonds (or angles) for which Mogul statistics could be retrieved, the number of bonds (or angles) that are observed in the model and the number of bonds (or angles) that are defined in the Chemical Component Dictionary. The Link column lists molecule types, if any, to which the group is linked. The Z score for a bond length (or angle) is the number of standard deviations the observed value is removed from the expected value. A bond length (or angle) with $|Z| > 2$ is considered an outlier worth inspection. RMSZ is the root-mean-square of all Z scores of the bond lengths (or angles).

Mol	Type	Chain	Res	Link	Bond lengths			Bond angles		
					Counts	RMSZ	# Z > 2	Counts	RMSZ	# Z > 2
3	5FS	A	601	-	21,25,25	4.94	17 (80%)	27,38,38	2.43	14 (51%)
3	5FS	B	601	-	21,25,25	4.71	16 (76%)	27,38,38	2.33	10 (37%)

In the following table, the Chirals column lists the number of chiral outliers, the number of chiral centers analysed, the number of these observed in the model and the number defined in the Chemical Component Dictionary. Similar counts are reported in the Torsion and Rings columns. '-' means no outliers of that kind were identified.

Mol	Type	Chain	Res	Link	Chirals	Torsions	Rings
3	5FS	A	601	-	-	0/8/22/22	0/3/3/3
3	5FS	B	601	-	-	0/8/22/22	0/3/3/3

All (33) bond length outliers are listed below:

Mol	Chain	Res	Type	Atoms	Z	Observed(Å)	Ideal(Å)
3	A	601	5FS	C06-C03	-12.47	1.33	1.49
3	B	601	5FS	C06-C03	-12.00	1.33	1.49
3	A	601	5FS	C05-C02	-11.86	1.34	1.49
3	B	601	5FS	C05-C02	-10.95	1.35	1.49
3	B	601	5FS	C08-C09	-5.08	1.31	1.39
3	A	601	5FS	C13-C12	-4.68	1.32	1.39

Continued on next page...

Continued from previous page...

Mol	Chain	Res	Type	Atoms	Z	Observed(Å)	Ideal(Å)
3	A	601	5FS	C08-C07	-4.64	1.32	1.39
3	A	601	5FS	C08-C09	-4.63	1.32	1.39
3	B	601	5FS	C13-C12	-4.42	1.32	1.39
3	B	601	5FS	C08-C07	-4.32	1.33	1.39
3	A	601	5FS	C06-C12	-4.29	1.32	1.40
3	B	601	5FS	C13-C14	-4.09	1.33	1.39
3	B	601	5FS	C06-C12	-4.08	1.33	1.40
3	A	601	5FS	C13-C14	-4.08	1.33	1.39
3	A	601	5FS	C16-C06	-3.98	1.33	1.39
3	A	601	5FS	O04-S01	-3.68	1.39	1.44
3	B	601	5FS	C16-C06	-3.63	1.34	1.39
3	B	601	5FS	C11-C05	-3.62	1.34	1.39
3	B	601	5FS	C05-C07	-3.58	1.34	1.40
3	A	601	5FS	C11-C05	-3.57	1.34	1.39
3	A	601	5FS	C16-C15	-3.53	1.32	1.38
3	A	601	5FS	C15-C14	-3.41	1.32	1.38
3	B	601	5FS	C16-C15	-3.34	1.32	1.38
3	B	601	5FS	C10-C09	-3.33	1.32	1.38
3	A	601	5FS	C03-C02	-3.30	1.33	1.45
3	B	601	5FS	C11-C10	-3.28	1.33	1.38
3	B	601	5FS	C15-C14	-3.25	1.32	1.38
3	A	601	5FS	C05-C07	-3.25	1.34	1.40
3	B	601	5FS	C03-C02	-3.10	1.34	1.45
3	A	601	5FS	C11-C10	-3.09	1.33	1.38
3	A	601	5FS	C10-C09	-2.93	1.33	1.38
3	B	601	5FS	O04-S01	-2.66	1.40	1.44
3	A	601	5FS	O03-S01	-2.63	1.40	1.44

All (24) bond angle outliers are listed below:

Mol	Chain	Res	Type	Atoms	Z	Observed(°)	Ideal(°)
3	A	601	5FS	O04-S01-C04	-4.38	107.41	110.94
3	B	601	5FS	C11-C05-C07	-4.03	114.94	119.91
3	B	601	5FS	C10-C09-C08	-3.55	116.20	120.19
3	B	601	5FS	C17-C07-C08	-3.54	112.88	119.48
3	A	601	5FS	C17-C07-C08	-3.23	113.46	119.48
3	B	601	5FS	C15-C14-C13	-3.00	116.82	120.19
3	A	601	5FS	C15-C14-C13	-2.93	116.89	120.19
3	A	601	5FS	C11-C05-C07	-2.70	116.58	119.91
3	A	601	5FS	C10-C09-C08	-2.64	117.22	120.19
3	A	601	5FS	C16-C06-C12	-2.25	117.13	119.91
3	A	601	5FS	C18-C12-C13	-2.14	115.48	119.48

Continued on next page...

Continued from previous page...

Mol	Chain	Res	Type	Atoms	Z	Observed(°)	Ideal(°)
3	B	601	5FS	C16-C06-C12	-2.09	117.33	119.91
3	A	601	5FS	O04-S01-C01	2.04	112.59	110.94
3	A	601	5FS	O03-S01-C04	2.08	112.62	110.94
3	A	601	5FS	C09-C08-C07	2.14	123.45	120.70
3	B	601	5FS	C14-C13-C12	2.30	123.65	120.70
3	A	601	5FS	C13-C12-C06	2.37	119.79	118.02
3	A	601	5FS	C17-C07-C05	2.38	126.61	122.82
3	B	601	5FS	C17-C07-C05	2.43	126.69	122.82
3	A	601	5FS	C08-C07-C05	2.56	119.93	118.02
3	B	601	5FS	C09-C08-C07	2.67	124.13	120.70
3	B	601	5FS	C08-C07-C05	3.23	120.44	118.02
3	B	601	5FS	O04-S01-O03	6.63	123.24	117.29
3	A	601	5FS	O04-S01-O03	7.36	123.89	117.29

There are no chirality outliers.

There are no torsion outliers.

There are no ring outliers.

2 monomers are involved in 3 short contacts:

Mol	Chain	Res	Type	Clashes	Symm-Clashes
3	A	601	5FS	2	0
3	B	601	5FS	1	0

5.7 Other polymers [i](#)

There are no such residues in this entry.

5.8 Polymer linkage issues [i](#)

There are no chain breaks in this entry.

6 Fit of model and data

6.1 Protein, DNA and RNA chains

In the following table, the column labelled ‘#RSRZ > 2’ contains the number (and percentage) of RSRZ outliers, followed by percent RSRZ outliers for the chain as percentile scores relative to all X-ray entries and entries of similar resolution. The OWAB column contains the minimum, median, 95th percentile and maximum values of the occupancy-weighted average B-factor per residue. The column labelled ‘Q < 0.9’ lists the number of (and percentage) of residues with an average occupancy less than 0.9.

Mol	Chain	Analysed	<RSRZ>	#RSRZ>2	OWAB(Å ²)	Q<0.9
1	A	230/257 (89%)	0.02	5 (2%) 62 69	41, 70, 103, 122	0
1	B	238/257 (92%)	0.21	9 (3%) 40 47	40, 71, 122, 147	0
2	C	9/14 (64%)	0.27	0 100 100	74, 84, 105, 112	0
2	D	9/14 (64%)	1.41	4 (44%) 0 0	108, 117, 136, 136	0
All	All	486/542 (89%)	0.14	18 (3%) 41 48	40, 72, 118, 147	0

All (18) RSRZ outliers are listed below:

Mol	Chain	Res	Type	RSRZ
1	B	373	HIS	5.7
1	B	307	ALA	4.7
1	B	529	LYS	4.6
1	B	535	PRO	4.5
1	B	418	VAL	3.0
2	D	690	LEU	2.8
1	B	337	PHE	2.7
1	B	306	LEU	2.5
1	A	336	PRO	2.4
1	B	534	VAL	2.4
1	A	331	TYR	2.4
2	D	689	ILE	2.3
1	A	459	TYR	2.3
1	A	373	HIS	2.3
2	D	691	HIS	2.1
1	B	459	TYR	2.1
2	D	693	LEU	2.1
1	A	425	PHE	2.1

6.2 Non-standard residues in protein, DNA, RNA chains [i](#)

There are no non-standard protein/DNA/RNA residues in this entry.

6.3 Carbohydrates [i](#)

There are no carbohydrates in this entry.

6.4 Ligands [i](#)

In the following table, the Atoms column lists the number of modelled atoms in the group and the number defined in the chemical component dictionary. The B-factors column lists the minimum, median, 95th percentile and maximum values of B factors of atoms in the group. The column labelled 'Q< 0.9' lists the number of atoms with occupancy less than 0.9.

Mol	Type	Chain	Res	Atoms	RSCC	RSR	B-factors(Å ²)	Q<0.9
3	5FS	A	601	23/23	0.95	0.10	58,60,62,66	0
3	5FS	B	601	23/23	0.96	0.15	47,57,69,71	0

6.5 Other polymers [i](#)

There are no such residues in this entry.