



# Full wwPDB X-ray Structure Validation Report ⓘ

Jun 12, 2024 – 04:35 PM EDT

PDB ID : 1DW3  
Title : STRUCTURE OF A REDUCED OXYGEN BINDING CYTOCHROME C  
Authors : Leys, D.; Backers, K.; Meyer, T.E.; Hagen, W.R.; Cusanovich, M.A.; Van Beeumen, J.J.  
Deposited on : 2000-01-24  
Resolution : 2.10 Å(reported)

This is a Full wwPDB X-ray Structure Validation Report for a publicly released PDB entry.

We welcome your comments at [validation@mail.wwpdb.org](mailto:validation@mail.wwpdb.org)

A user guide is available at

<https://www.wwpdb.org/validation/2017/XrayValidationReportHelp>

with specific help available everywhere you see the ⓘ symbol.

The types of validation reports are described at

<http://www.wwpdb.org/validation/2017/FAQs#types>.

---

The following versions of software and data (see [references ⓘ](#)) were used in the production of this report:

MolProbity : 4.02b-467  
Mogul : 1.8.5 (274361), CSD as541be (2020)  
Xtriage (Phenix) : 1.13  
EDS : 2.36.2  
buster-report : 1.1.7 (2018)  
Percentile statistics : 20191225.v01 (using entries in the PDB archive December 25th 2019)  
Refmac : 5.8.0158  
CCP4 : 7.0.044 (Gargrove)  
Ideal geometry (proteins) : Engh & Huber (2001)  
Ideal geometry (DNA, RNA) : Parkinson et al. (1996)  
Validation Pipeline (wwPDB-VP) : 2.36.2

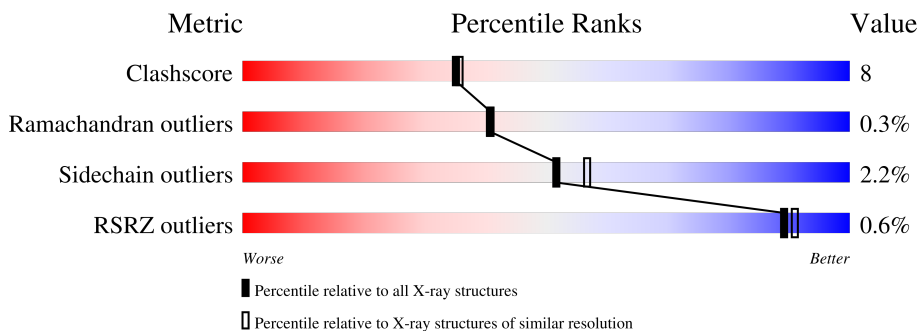
# 1 Overall quality at a glance

The following experimental techniques were used to determine the structure:

*X-RAY DIFFRACTION*

The reported resolution of this entry is 2.10 Å.

Percentile scores (ranging between 0-100) for global validation metrics of the entry are shown in the following graphic. The table shows the number of entries on which the scores are based.



Metric	Whole archive (#Entries)	Similar resolution (#Entries, resolution range(Å))
Clashscore	141614	5710 (2.10-2.10)
Ramachandran outliers	138981	5647 (2.10-2.10)
Sidechain outliers	138945	5648 (2.10-2.10)
RSRZ outliers	127900	5083 (2.10-2.10)

The table below summarises the geometric issues observed across the polymeric chains and their fit to the electron density. The red, orange, yellow and green segments of the lower bar indicate the fraction of residues that contain outliers for  $\geq 3$ , 2, 1 and 0 types of geometric quality criteria respectively. A grey segment represents the fraction of residues that are not modelled. The numeric value for each fraction is indicated below the corresponding segment, with a dot representing fractions  $\leq 5\%$ . The upper red bar (where present) indicates the fraction of residues that have poor fit to the electron density. The numeric value is given above the bar.

Mol	Chain	Length	Quality of chain
1	A	112	 80% 13% 6%
1	B	112	 77% 21% ..
1	C	112	 78% 16% 5% .

## 2 Entry composition [i](#)

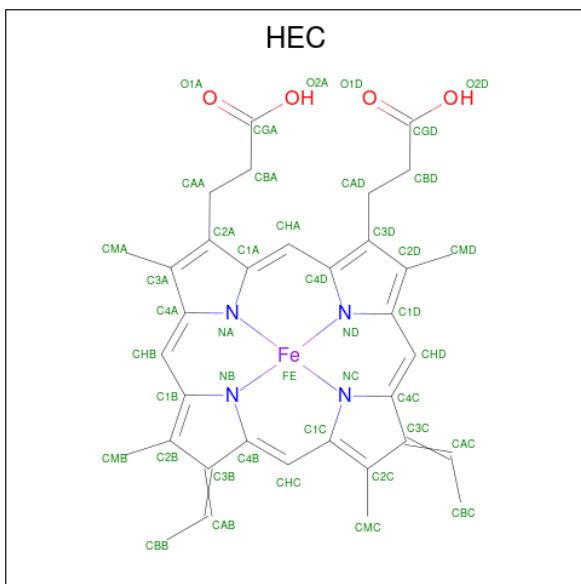
There are 3 unique types of molecules in this entry. The entry contains 2951 atoms, of which 0 are hydrogens and 0 are deuteriums.

In the tables below, the ZeroOcc column contains the number of atoms modelled with zero occupancy, the AltConf column contains the number of residues with at least one atom in alternate conformation and the Trace column contains the number of residues modelled with at most 2 atoms.

- Molecule 1 is a protein called CYTOCHROME C.

Mol	Chain	Residues	Atoms					ZeroOcc	AltConf	Trace
			Total	C	N	O	S			
1	A	112	Total	C	N	O	S	0	1	0
			802	488	149	161	4			
1	B	112	Total	C	N	O	S	0	0	0
			794	483	143	164	4			
1	C	112	Total	C	N	O	S	0	1	0
			802	486	150	162	4			

- Molecule 2 is HEME C (three-letter code: HEC) (formula:  $C_{34}H_{34}FeN_4O_4$ ).



Mol	Chain	Residues	Atoms				ZeroOcc	AltConf	
			Total	C	Fe	N			O
2	A	1	Total	C	Fe	N	O	0	1
			45	34	1	4	6		
2	B	1	Total	C	Fe	N	O	0	0
			43	34	1	4	4		
2	C	1	Total	C	Fe	N	O	0	0
			43	34	1	4	4		

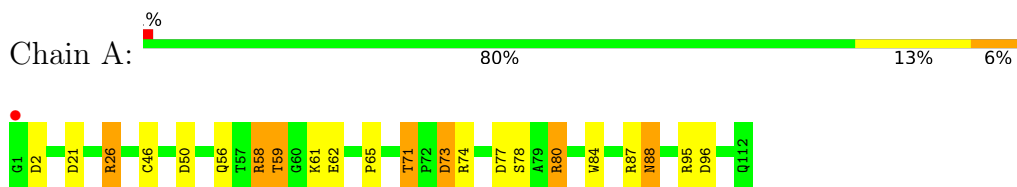
- Molecule 3 is water.

<b>Mol</b>	<b>Chain</b>	<b>Residues</b>	<b>Atoms</b>		<b>ZeroOcc</b>	<b>AltConf</b>
3	A	132	Total 132	O 132	0	0
3	B	127	Total 127	O 127	0	0
3	C	163	Total 163	O 163	0	0

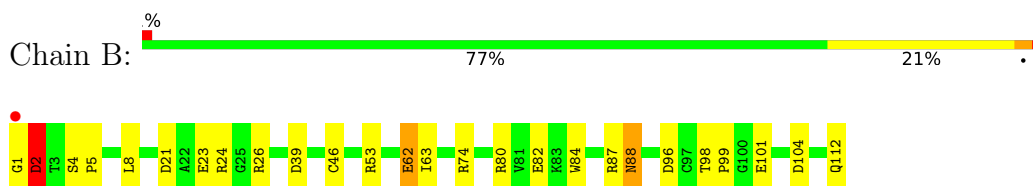
### 3 Residue-property plots [i](#)

These plots are drawn for all protein, RNA, DNA and oligosaccharide chains in the entry. The first graphic for a chain summarises the proportions of the various outlier classes displayed in the second graphic. The second graphic shows the sequence view annotated by issues in geometry and electron density. Residues are color-coded according to the number of geometric quality criteria for which they contain at least one outlier: green = 0, yellow = 1, orange = 2 and red = 3 or more. A red dot above a residue indicates a poor fit to the electron density ( $RSRZ > 2$ ). Stretches of 2 or more consecutive residues without any outlier are shown as a green connector. Residues present in the sample, but not in the model, are shown in grey.

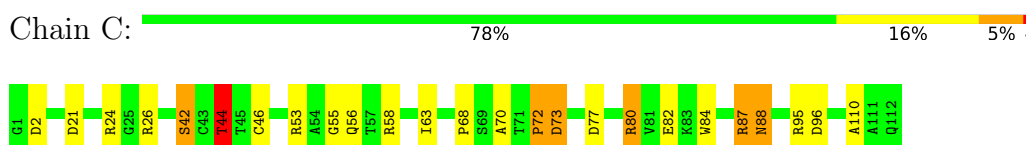
- Molecule 1: CYTOCHROME C



- Molecule 1: CYTOCHROME C



- Molecule 1: CYTOCHROME C



## 4 Data and refinement statistics

Property	Value	Source
Space group	I 2 2 2	Depositor
Cell constants a, b, c, $\alpha$ , $\beta$ , $\gamma$	83.34Å 103.50Å 113.66Å 90.00° 90.00° 90.00°	Depositor
Resolution (Å)	20.00 – 2.10 19.60 – 2.09	Depositor EDS
% Data completeness (in resolution range)	(Not available) (20.00-2.10) 93.1 (19.60-2.09)	Depositor EDS
$R_{merge}$	0.05	Depositor
$R_{sym}$	(Not available)	Depositor
$\langle I/\sigma(I) \rangle$ <sup>1</sup>	1.54 (at 2.09Å)	Xtrriage
Refinement program	REFMAC	Depositor
R, $R_{free}$	0.171 , 0.198 0.166 , (Not available)	Depositor DCC
$R_{free}$ test set	No test flags present.	wwPDB-VP
Wilson B-factor (Å <sup>2</sup> )	31.3	Xtrriage
Anisotropy	0.224	Xtrriage
Bulk solvent $k_{sol}$ (e/Å <sup>3</sup> ), $B_{sol}$ (Å <sup>2</sup> )	0.35 , 83.8	EDS
L-test for twinning <sup>2</sup>	$\langle  L  \rangle = 0.49$ , $\langle L^2 \rangle = 0.33$	Xtrriage
Estimated twinning fraction	No twinning to report.	Xtrriage
$F_o, F_c$ correlation	0.97	EDS
Total number of atoms	2951	wwPDB-VP
Average B, all atoms (Å <sup>2</sup> )	37.0	wwPDB-VP

Xtrriage's analysis on translational NCS is as follows: *The largest off-origin peak in the Patterson function is 5.54% of the height of the origin peak. No significant pseudotranslation is detected.*

<sup>1</sup>Intensities estimated from amplitudes.

<sup>2</sup>Theoretical values of  $\langle |L| \rangle$ ,  $\langle L^2 \rangle$  for acentric reflections are 0.5, 0.333 respectively for untwinned datasets, and 0.375, 0.2 for perfectly twinned datasets.

## 5 Model quality [i](#)

### 5.1 Standard geometry [i](#)

Bond lengths and bond angles in the following residue types are not validated in this section: HEC

The Z score for a bond length (or angle) is the number of standard deviations the observed value is removed from the expected value. A bond length (or angle) with  $|Z| > 5$  is considered an outlier worth inspection. RMSZ is the root-mean-square of all Z scores of the bond lengths (or angles).

Mol	Chain	Bond lengths		Bond angles	
		RMSZ	# Z  >5	RMSZ	# Z  >5
1	A	0.81	0/824	2.21	25/1121 (2.2%)
1	B	0.74	0/809	1.89	23/1105 (2.1%)
1	C	0.78	0/824	1.96	29/1123 (2.6%)
All	All	0.78	0/2457	2.02	77/3349 (2.3%)

There are no bond length outliers.

All (77) bond angle outliers are listed below:

Mol	Chain	Res	Type	Atoms	Z	Observed(°)	Ideal(°)
1	A	87	ARG	NE-CZ-NH2	-27.93	106.33	120.30
1	A	80[A]	ARG	CD-NE-CZ	17.39	147.94	123.60
1	A	80[B]	ARG	CD-NE-CZ	17.39	147.94	123.60
1	A	80[A]	ARG	NE-CZ-NH1	15.03	127.81	120.30
1	A	80[B]	ARG	NE-CZ-NH1	15.03	127.81	120.30
1	C	80[A]	ARG	CD-NE-CZ	13.51	142.51	123.60
1	C	80[B]	ARG	CD-NE-CZ	13.51	142.51	123.60
1	C	26	ARG	NE-CZ-NH2	-13.15	113.72	120.30
1	A	96	ASP	CB-CG-OD1	12.82	129.84	118.30
1	A	58	ARG	NE-CZ-NH2	-12.63	113.99	120.30
1	B	74	ARG	NE-CZ-NH2	12.62	126.61	120.30
1	B	23	GLU	OE1-CD-OE2	-12.45	108.36	123.30
1	A	74	ARG	NE-CZ-NH2	-11.82	114.39	120.30
1	B	80	ARG	NE-CZ-NH1	-11.37	114.61	120.30
1	B	53	ARG	NE-CZ-NH2	-11.25	114.68	120.30
1	C	80[A]	ARG	NE-CZ-NH1	11.09	125.84	120.30
1	C	80[B]	ARG	NE-CZ-NH1	11.09	125.84	120.30
1	C	72	PRO	O-C-N	-11.02	105.07	122.70
1	A	74	ARG	NE-CZ-NH1	10.17	125.39	120.30
1	B	96	ASP	CB-CG-OD1	10.03	127.32	118.30
1	C	24	ARG	NE-CZ-NH1	-9.63	115.48	120.30

*Continued on next page...*

*Continued from previous page...*

Mol	Chain	Res	Type	Atoms	Z	Observed(°)	Ideal(°)
1	C	58	ARG	NE-CZ-NH1	-9.62	115.49	120.30
1	C	95	ARG	NE-CZ-NH1	-9.53	115.53	120.30
1	A	87	ARG	NH1-CZ-NH2	9.44	129.78	119.40
1	C	96	ASP	CB-CG-OD1	9.43	126.79	118.30
1	A	50	ASP	CB-CG-OD2	9.04	126.43	118.30
1	B	101	GLU	OE1-CD-OE2	-8.66	112.90	123.30
1	A	58	ARG	NE-CZ-NH1	8.56	124.58	120.30
1	B	53	ARG	NE-CZ-NH1	8.52	124.56	120.30
1	A	95	ARG	NE-CZ-NH2	8.46	124.53	120.30
1	C	53	ARG	NE-CZ-NH1	8.45	124.53	120.30
1	B	87	ARG	NE-CZ-NH1	-8.44	116.08	120.30
1	B	21	ASP	CB-CG-OD1	8.40	125.86	118.30
1	C	72	PRO	CA-C-N	8.31	135.47	117.20
1	B	26	ARG	NE-CZ-NH1	-8.04	116.28	120.30
1	C	88	ASN	CB-CA-C	7.89	126.19	110.40
1	C	82	GLU	OE1-CD-OE2	-7.39	114.43	123.30
1	A	87	ARG	NE-CZ-NH1	7.14	123.87	120.30
1	A	77	ASP	CB-CG-OD1	7.13	124.71	118.30
1	A	96	ASP	CB-CG-OD2	-7.13	111.89	118.30
1	B	82	GLU	OE1-CD-OE2	-7.00	114.89	123.30
1	C	73	ASP	CB-CG-OD2	-6.99	112.01	118.30
1	C	80[A]	ARG	NE-CZ-NH2	-6.91	116.85	120.30
1	C	80[B]	ARG	NE-CZ-NH2	-6.91	116.85	120.30
1	A	95	ARG	NE-CZ-NH1	-6.89	116.85	120.30
1	A	88	ASN	CB-CA-C	6.77	123.94	110.40
1	B	112	GLN	CA-C-O	-6.74	105.94	120.10
1	A	21	ASP	CB-CG-OD1	6.71	124.34	118.30
1	C	44	THR	N-CA-CB	-6.56	97.83	110.30
1	B	1	GLY	C-N-CA	6.49	137.93	121.70
1	C	70	ALA	O-C-N	-6.48	112.33	122.70
1	C	53	ARG	NE-CZ-NH2	-6.47	117.07	120.30
1	A	62	GLU	OE1-CD-OE2	-6.46	115.54	123.30
1	B	88	ASN	CB-CA-C	6.40	123.20	110.40
1	B	62	GLU	CG-CD-OE1	6.40	131.09	118.30
1	A	21	ASP	CB-CG-OD2	-6.38	112.56	118.30
1	B	23	GLU	CG-CD-OE2	6.31	130.92	118.30
1	A	2	ASP	CB-CG-OD1	-6.15	112.76	118.30
1	C	21	ASP	CB-CG-OD1	6.10	123.79	118.30
1	B	80	ARG	NH1-CZ-NH2	6.06	126.06	119.40
1	C	58	ARG	NH1-CZ-NH2	6.02	126.03	119.40
1	C	77	ASP	CB-CG-OD2	6.02	123.72	118.30
1	C	88	ASN	N-CA-CB	-6.00	99.80	110.60

*Continued on next page...*



Continued from previous page...

Mol	Chain	Res	Type	Atoms	Z	Observed(°)	Ideal(°)
1	C	96	ASP	CB-CG-OD2	-5.84	113.04	118.30
1	A	26	ARG	NE-CZ-NH2	5.84	123.22	120.30
1	B	2	ASP	N-CA-CB	5.77	120.98	110.60
1	A	73	ASP	CB-CG-OD2	-5.73	113.15	118.30
1	B	104	ASP	CB-CG-OD1	-5.72	113.15	118.30
1	B	24	ARG	N-CA-CB	5.71	120.88	110.60
1	B	39	ASP	CB-CG-OD1	-5.66	113.20	118.30
1	A	88	ASN	N-CA-CB	-5.57	100.57	110.60
1	C	42	SER	N-CA-CB	-5.36	102.45	110.50
1	C	87	ARG	NE-CZ-NH2	-5.26	117.67	120.30
1	B	1	GLY	O-C-N	-5.18	114.42	122.70
1	B	21	ASP	CB-CG-OD2	-5.15	113.66	118.30
1	C	2	ASP	CB-CG-OD2	5.12	122.91	118.30
1	C	88	ASN	CB-CG-ND2	5.09	128.91	116.70

There are no chirality outliers.

There are no planarity outliers.

## 5.2 Too-close contacts [\(i\)](#)

In the following table, the Non-H and H(model) columns list the number of non-hydrogen atoms and hydrogen atoms in the chain respectively. The H(added) column lists the number of hydrogen atoms added and optimized by MolProbity. The Clashes column lists the number of clashes within the asymmetric unit, whereas Symm-Clashes lists symmetry-related clashes.

Mol	Chain	Non-H	H(model)	H(added)	Clashes	Symm-Clashes
1	A	802	0	762	17	0
1	B	794	0	740	7	2
1	C	802	0	755	13	0
2	A	45	0	0	0	0
2	B	43	0	30	2	0
2	C	43	0	30	3	0
3	A	132	0	0	9	2
3	B	127	0	0	1	0
3	C	163	0	0	4	0
All	All	2951	0	2317	37	2

The all-atom clashscore is defined as the number of clashes found per 1000 atoms (including hydrogen atoms). The all-atom clashscore for this structure is 8.

All (37) close contacts within the same asymmetric unit are listed below, sorted by their clash magnitude.

Atom-1	Atom-2	Interatomic distance (Å)	Clash overlap (Å)
1:C:72:PRO:O	3:C:260:HOH:O	1.67	1.13
1:A:78:SER:HB2	3:A:128:HOH:O	1.79	0.82
1:C:88:ASN:OD1	3:C:245:HOH:O	1.95	0.82
1:A:88:ASN:OD1	3:A:205:HOH:O	2.07	0.71
1:A:26:ARG:HD2	3:A:212:HOH:O	1.90	0.69
1:A:56:GLN:NE2	3:A:194:HOH:O	2.27	0.66
1:A:59:THR:HB	3:A:121:HOH:O	1.96	0.65
1:B:88:ASN:OD1	3:B:238:HOH:O	2.14	0.63
1:B:46:CYS:SG	2:B:113:HEC:C3C	2.86	0.62
1:C:73:ASP:OD1	1:C:73:ASP:N	2.33	0.62
1:A:73:ASP:HB3	3:A:243:HOH:O	1.98	0.61
1:B:46:CYS:SG	2:B:113:HEC:CBC	2.84	0.59
1:C:87:ARG:HD3	3:C:268:HOH:O	2.05	0.56
1:C:46:CYS:SG	2:C:113:HEC:C3C	2.92	0.56
1:C:46:CYS:SG	2:C:113:HEC:CBC	2.89	0.55
1:C:56:GLN:HA	1:C:63:ILE:HG13	1.89	0.55
1:B:98:THR:HB	1:B:99:PRO:HD2	1.90	0.53
1:C:80[A]:ARG:NH2	2:C:113:HEC:O2D	2.42	0.52
1:A:80[B]:ARG:NH2	3:A:224:HOH:O	2.45	0.49
1:C:42:SER:OG	1:C:44:THR:HB	2.14	0.48
1:B:4:SER:HB2	1:B:5:PRO:HD2	1.95	0.48
1:A:59:THR:HG22	1:A:61:LYS:HG2	1.97	0.47
1:C:84:TRP:O	1:C:88:ASN:HB2	2.13	0.47
1:B:62:GLU:HG3	1:B:63:ILE:N	2.30	0.46
1:C:80[B]:ARG:NH2	3:C:180:HOH:O	2.47	0.44
1:A:80[B]:ARG:CZ	3:A:224:HOH:O	2.65	0.44
1:A:80[A]:ARG:HD3	3:A:175:HOH:O	2.17	0.43
1:A:84:TRP:O	1:A:88:ASN:HB2	2.18	0.43
1:A:73:ASP:OD1	1:A:73:ASP:N	2.33	0.43
1:C:68:PRO:HG2	1:C:110:ALA:HA	2.02	0.42
1:B:84:TRP:HE3	1:B:88:ASN:ND2	2.19	0.41
1:C:55:GLY:O	1:C:56:GLN:HB3	2.20	0.41
1:A:65:PRO:O	1:A:71:THR:HG23	2.21	0.41
1:A:58:ARG:HE	1:A:58:ARG:HA	1.86	0.40

All (2) symmetry-related close contacts are listed below. The label for Atom-2 includes the symmetry operator and encoded unit-cell translations to be applied.

Atom-1	Atom-2	Interatomic distance (Å)	Clash overlap (Å)
1:B:62:GLU:OE1	3:A:210:HOH:O[4_556]	2.12	0.08
1:B:62:GLU:OE1	3:A:182:HOH:O[4_556]	2.16	0.04

## 5.3 Torsion angles [i](#)

### 5.3.1 Protein backbone [i](#)

In the following table, the Percentiles column shows the percent Ramachandran outliers of the chain as a percentile score with respect to all X-ray entries followed by that with respect to entries of similar resolution.

The Analysed column shows the number of residues for which the backbone conformation was analysed, and the total number of residues.

Mol	Chain	Analysed	Favoured	Allowed	Outliers	Percentiles	
1	A	111/112 (99%)	111 (100%)	0	0	100	100
1	B	110/112 (98%)	108 (98%)	1 (1%)	1 (1%)	17	12
1	C	111/112 (99%)	110 (99%)	1 (1%)	0	100	100
All	All	332/336 (99%)	329 (99%)	2 (1%)	1 (0%)	41	41

All (1) Ramachandran outliers are listed below:

Mol	Chain	Res	Type
1	B	2	ASP

### 5.3.2 Protein sidechains [i](#)

In the following table, the Percentiles column shows the percent sidechain outliers of the chain as a percentile score with respect to all X-ray entries followed by that with respect to entries of similar resolution.

The Analysed column shows the number of residues for which the sidechain conformation was analysed, and the total number of residues.

Mol	Chain	Analysed	Rotameric	Outliers	Percentiles	
1	A	78/81 (96%)	76 (97%)	2 (3%)	46	50
1	B	77/81 (95%)	75 (97%)	2 (3%)	46	50
1	C	78/81 (96%)	77 (99%)	1 (1%)	69	75
All	All	233/243 (96%)	228 (98%)	5 (2%)	52	59

All (5) residues with a non-rotameric sidechain are listed below:

Mol	Chain	Res	Type
1	A	59	THR
1	A	71	THR

*Continued on next page...*

*Continued from previous page...*

Mol	Chain	Res	Type
1	B	2	ASP
1	B	8	LEU
1	C	44	THR

Sometimes sidechains can be flipped to improve hydrogen bonding and reduce clashes. All (3) such sidechains are listed below:

Mol	Chain	Res	Type
1	A	90	ASN
1	B	90	ASN
1	C	90	ASN

### 5.3.3 RNA [i](#)

There are no RNA molecules in this entry.

## 5.4 Non-standard residues in protein, DNA, RNA chains [i](#)

There are no non-standard protein/DNA/RNA residues in this entry.

## 5.5 Carbohydrates [i](#)

There are no monosaccharides in this entry.

## 5.6 Ligand geometry [i](#)

4 ligands are modelled in this entry.

In the following table, the Counts columns list the number of bonds (or angles) for which Mogul statistics could be retrieved, the number of bonds (or angles) that are observed in the model and the number of bonds (or angles) that are defined in the Chemical Component Dictionary. The Link column lists molecule types, if any, to which the group is linked. The Z score for a bond length (or angle) is the number of standard deviations the observed value is removed from the expected value. A bond length (or angle) with  $|Z| > 2$  is considered an outlier worth inspection. RMSZ is the root-mean-square of all Z scores of the bond lengths (or angles).

Mol	Type	Chain	Res	Link	Bond lengths			Bond angles		
					Counts	RMSZ	# Z  > 2	Counts	RMSZ	# Z  > 2
2	HEC	A	113[B]	-	32,50,50	1.90	7 (21%)	24,82,82	2.15	10 (41%)
2	HEC	B	113	1	32,50,50	2.38	6 (18%)	24,82,82	1.51	4 (16%)

Mol	Type	Chain	Res	Link	Bond lengths			Bond angles		
					Counts	RMSZ	# Z  > 2	Counts	RMSZ	# Z  > 2
2	HEC	C	113	1	32,50,50	2.15	7 (21%)	24,82,82	1.67	6 (25%)
2	HEC	A	113[A]	-	32,50,50	1.89	6 (18%)	24,82,82	2.18	10 (41%)

In the following table, the Chirals column lists the number of chiral outliers, the number of chiral centers analysed, the number of these observed in the model and the number defined in the Chemical Component Dictionary. Similar counts are reported in the Torsion and Rings columns. '-' means no outliers of that kind were identified.

Mol	Type	Chain	Res	Link	Chirals	Torsions	Rings
2	HEC	A	113[B]	-	-	2/10/54/54	-
2	HEC	B	113	1	-	3/10/54/54	-
2	HEC	C	113	1	-	2/10/54/54	-
2	HEC	A	113[A]	-	-	4/10/54/54	-

All (26) bond length outliers are listed below:

Mol	Chain	Res	Type	Atoms	Z	Observed(Å)	Ideal(Å)
2	B	113	HEC	C3C-C2C	-8.69	1.31	1.40
2	B	113	HEC	C2B-C3B	-7.02	1.33	1.40
2	C	113	HEC	C3C-C2C	-6.80	1.33	1.40
2	A	113[A]	HEC	C2B-C3B	-5.73	1.34	1.40
2	A	113[B]	HEC	C2B-C3B	-5.73	1.34	1.40
2	C	113	HEC	C2B-C3B	-5.54	1.35	1.40
2	A	113[A]	HEC	C3C-C2C	-4.89	1.35	1.40
2	A	113[B]	HEC	C3C-C2C	-4.89	1.35	1.40
2	B	113	HEC	CBC-CAC	-3.11	1.37	1.49
2	C	113	HEC	CAA-C2A	3.10	1.57	1.52
2	C	113	HEC	CBB-CAB	-3.00	1.38	1.49
2	C	113	HEC	CBC-CAC	-2.91	1.38	1.49
2	B	113	HEC	CBB-CAB	-2.89	1.38	1.49
2	A	113[A]	HEC	CBC-CAC	-2.74	1.39	1.49
2	A	113[B]	HEC	CBC-CAC	-2.74	1.39	1.49
2	A	113[A]	HEC	CBB-CAB	-2.68	1.39	1.49
2	A	113[B]	HEC	CBB-CAB	-2.68	1.39	1.49
2	C	113	HEC	CAD-C3D	2.65	1.55	1.52
2	A	113[A]	HEC	CAA-C2A	2.60	1.56	1.52
2	A	113[B]	HEC	CAA-C2A	2.60	1.56	1.52
2	B	113	HEC	CAD-C3D	2.55	1.55	1.52
2	C	113	HEC	C1C-NC	2.13	1.40	1.36
2	A	113[B]	HEC	O1A-CGA	2.13	1.29	1.22
2	B	113	HEC	CMC-C2C	2.11	1.56	1.51

Continued on next page...

*Continued from previous page...*

Mol	Chain	Res	Type	Atoms	Z	Observed(Å)	Ideal(Å)
2	A	113[A]	HEC	CAD-C3D	2.05	1.55	1.52
2	A	113[B]	HEC	CAD-C3D	2.05	1.55	1.52

All (30) bond angle outliers are listed below:

Mol	Chain	Res	Type	Atoms	Z	Observed(°)	Ideal(°)
2	A	113[A]	HEC	CMB-C2B-C3B	4.58	131.20	125.82
2	A	113[B]	HEC	CMB-C2B-C3B	4.58	131.20	125.82
2	A	113[A]	HEC	CMB-C2B-C1B	-3.71	122.76	128.46
2	A	113[B]	HEC	CMB-C2B-C1B	-3.71	122.76	128.46
2	A	113[A]	HEC	CMC-C2C-C3C	3.65	130.11	125.82
2	A	113[B]	HEC	CMC-C2C-C3C	3.65	130.11	125.82
2	C	113	HEC	CMC-C2C-C1C	-3.50	123.08	128.46
2	A	113[A]	HEC	CMC-C2C-C1C	-3.49	123.11	128.46
2	A	113[B]	HEC	CMC-C2C-C1C	-3.49	123.11	128.46
2	A	113[A]	HEC	CMD-C2D-C1D	-3.31	123.38	128.46
2	A	113[B]	HEC	CMD-C2D-C1D	-3.31	123.38	128.46
2	C	113	HEC	CMC-C2C-C3C	2.86	129.18	125.82
2	B	113	HEC	O2A-CGA-CBA	2.85	123.20	114.03
2	C	113	HEC	CMD-C2D-C1D	-2.73	124.27	128.46
2	C	113	HEC	O2D-CGD-O1D	2.71	130.05	123.30
2	A	113[A]	HEC	O2A-CGA-O1A	2.68	129.98	123.30
2	A	113[A]	HEC	O1A-CGA-CBA	-2.68	114.48	123.08
2	A	113[B]	HEC	O2A-CGA-CBA	2.49	122.03	114.03
2	A	113[A]	HEC	CMD-C2D-C3D	2.33	129.33	124.94
2	A	113[B]	HEC	CMD-C2D-C3D	2.33	129.33	124.94
2	A	113[B]	HEC	O1A-CGA-CBA	-2.32	115.64	123.08
2	B	113	HEC	CMC-C2C-C1C	-2.32	124.90	128.46
2	C	113	HEC	O1D-CGD-CBD	-2.31	115.65	123.08
2	B	113	HEC	CMD-C2D-C1D	-2.19	125.10	128.46
2	C	113	HEC	CMB-C2B-C3B	2.11	128.30	125.82
2	B	113	HEC	CMB-C2B-C1B	-2.10	125.24	128.46
2	A	113[A]	HEC	O2D-CGD-CBD	2.03	120.54	114.03
2	A	113[B]	HEC	O2D-CGD-CBD	2.03	120.54	114.03
2	A	113[A]	HEC	CMA-C3A-C2A	2.02	128.74	124.94
2	A	113[B]	HEC	CMA-C3A-C2A	2.02	128.74	124.94

There are no chirality outliers.

All (11) torsion outliers are listed below:

Mol	Chain	Res	Type	Atoms
2	B	113	HEC	C3D-CAD-CBD-CGD

*Continued on next page...*

*Continued from previous page...*

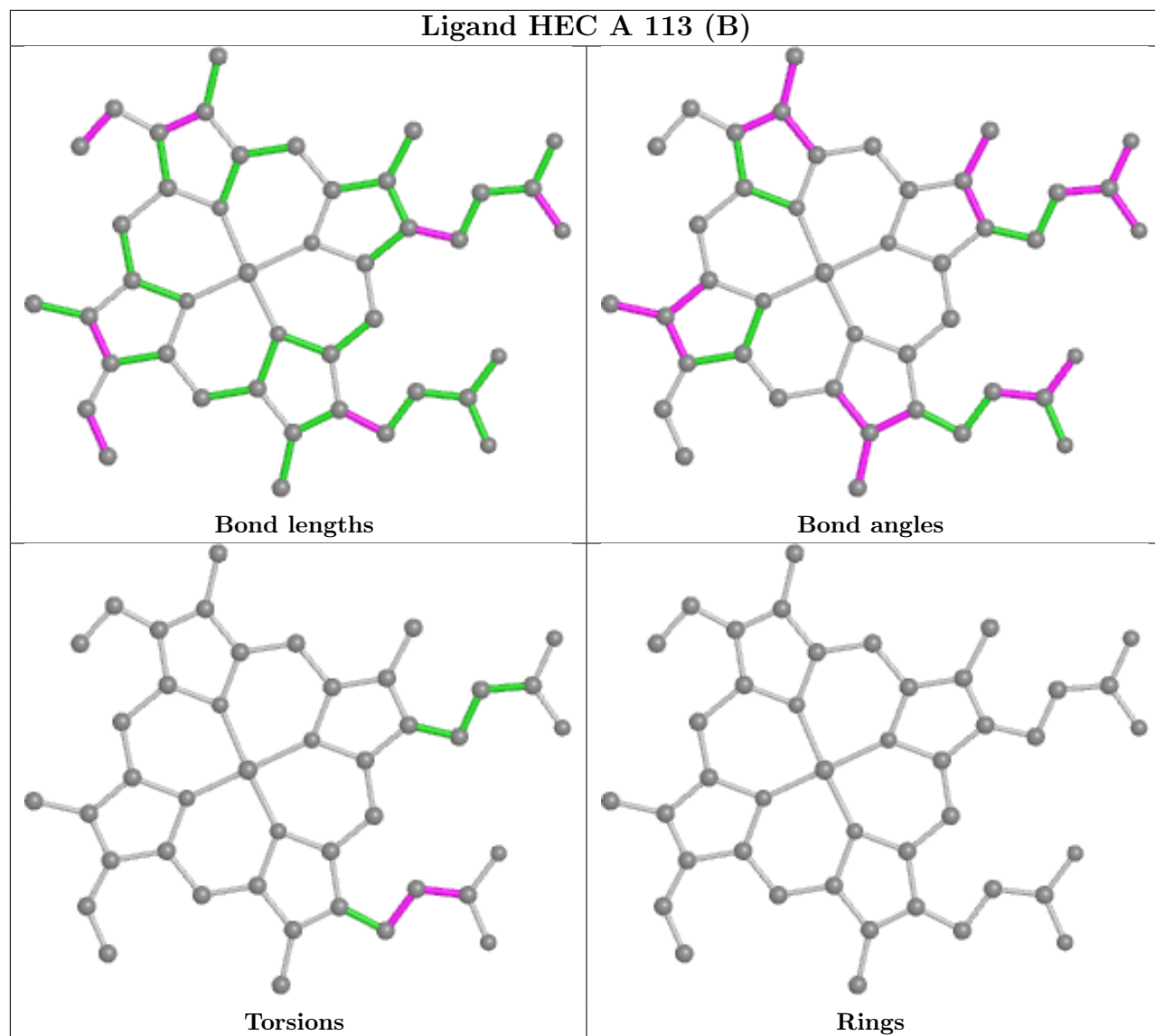
Mol	Chain	Res	Type	Atoms
2	A	113[A]	HEC	C3D-CAD-CBD-CGD
2	A	113[B]	HEC	C3D-CAD-CBD-CGD
2	A	113[A]	HEC	CAA-CBA-CGA-O2A
2	A	113[A]	HEC	CAA-CBA-CGA-O1A
2	C	113	HEC	CAD-CBD-CGD-O1D
2	B	113	HEC	CAA-CBA-CGA-O2A
2	C	113	HEC	CAD-CBD-CGD-O2D
2	B	113	HEC	CAA-CBA-CGA-O1A
2	A	113[A]	HEC	CAD-CBD-CGD-O2D
2	A	113[B]	HEC	CAD-CBD-CGD-O2D

There are no ring outliers.

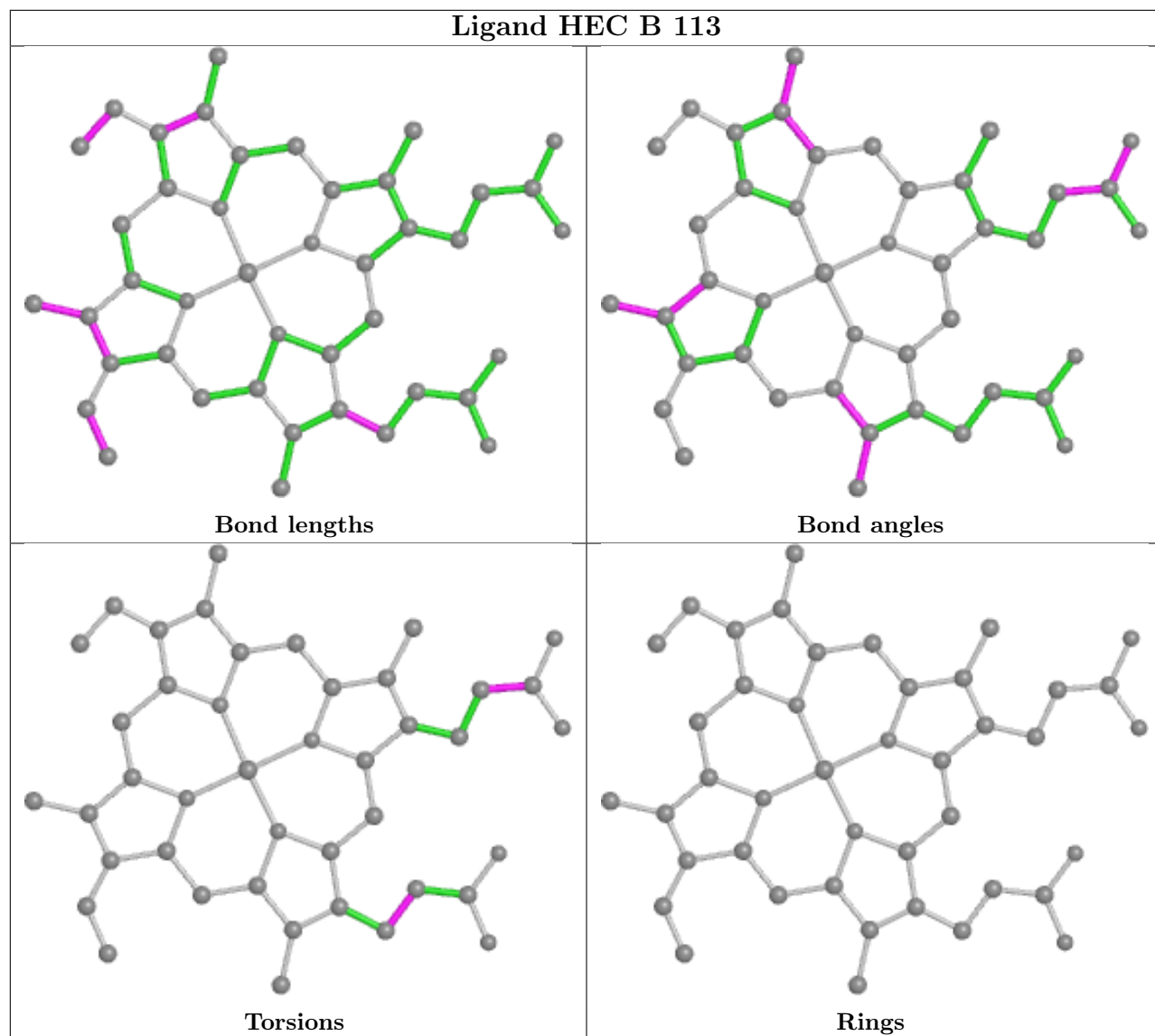
2 monomers are involved in 5 short contacts:

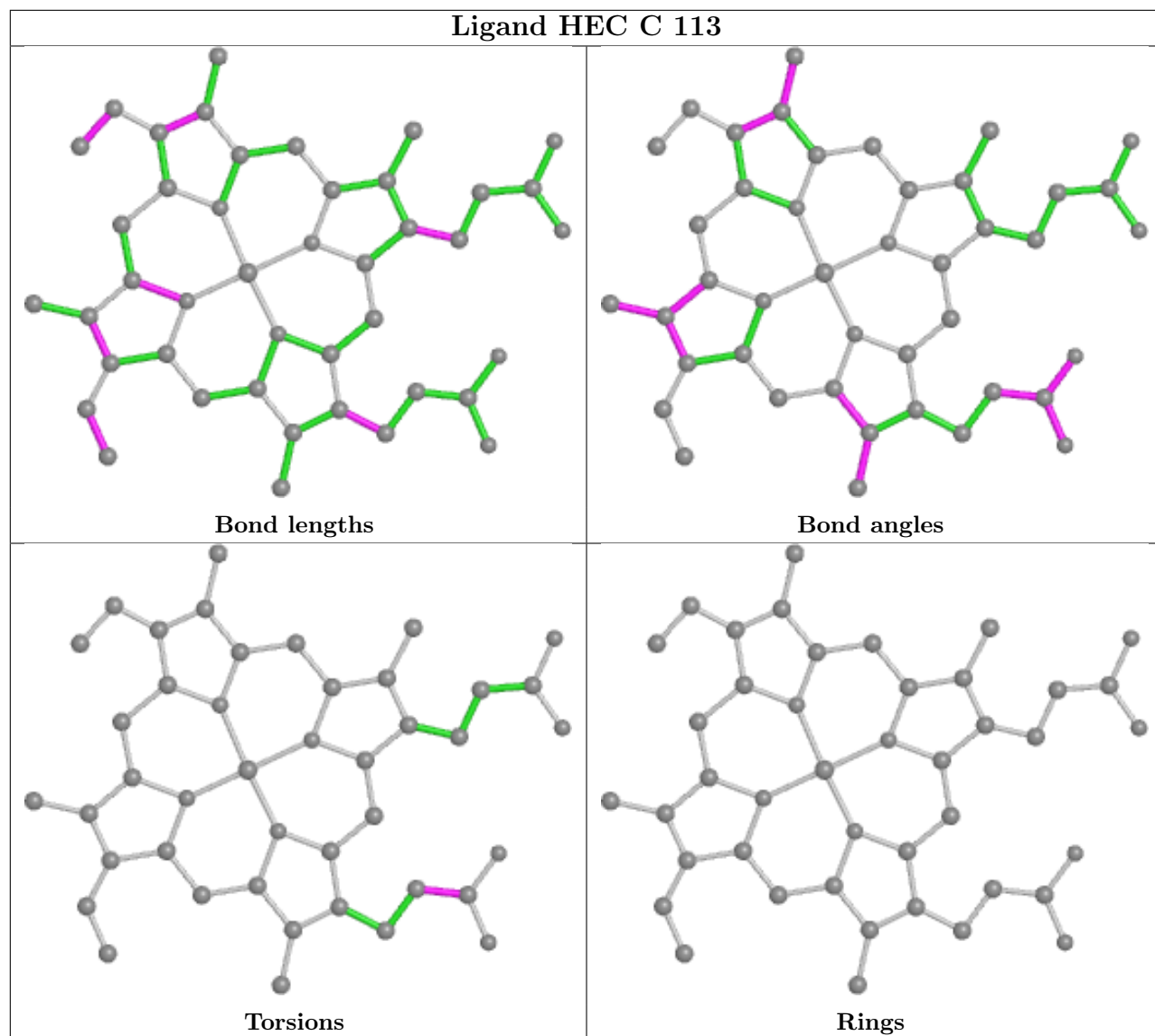
Mol	Chain	Res	Type	Clashes	Symm-Clashes
2	B	113	HEC	2	0
2	C	113	HEC	3	0

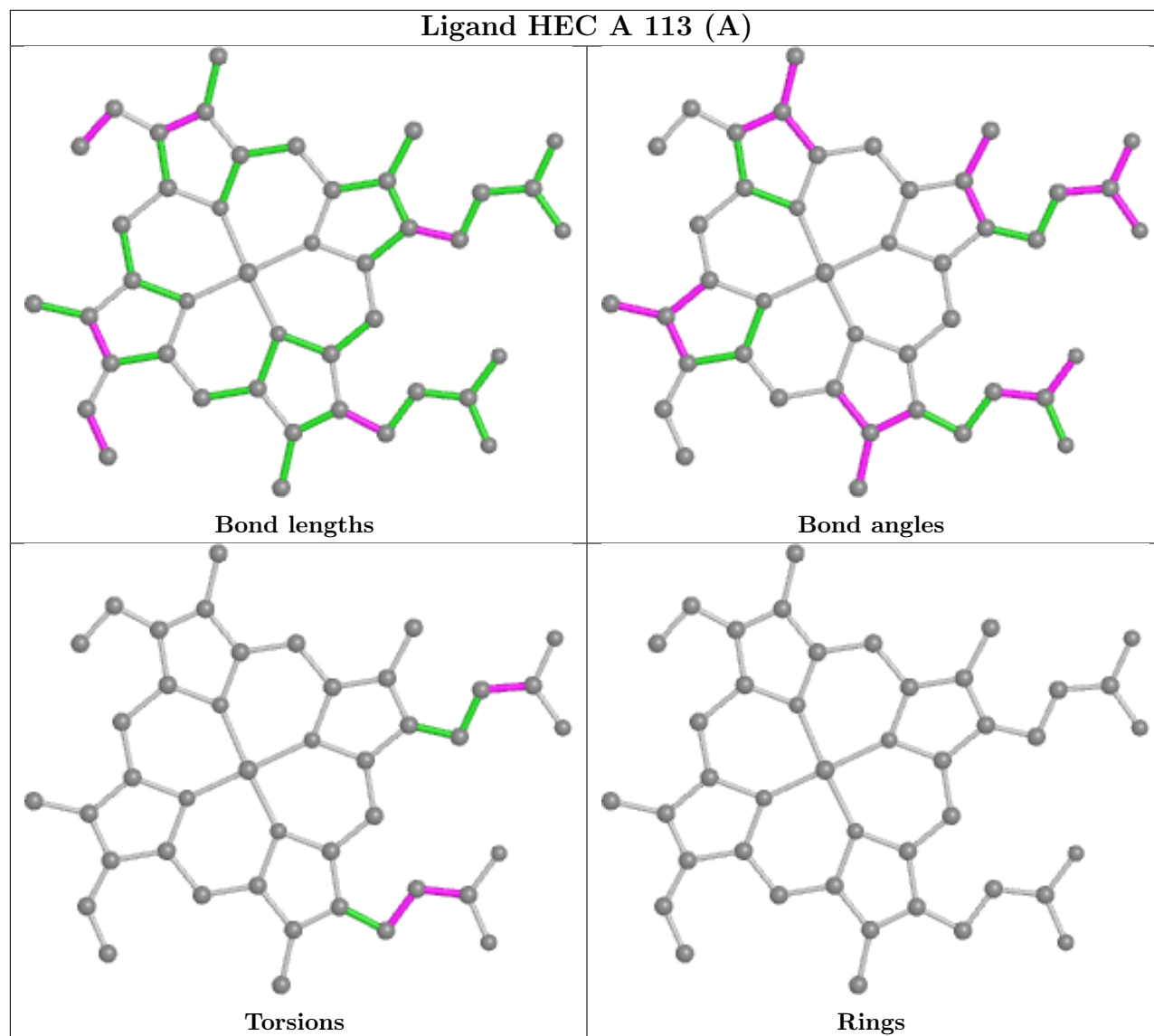
The following is a two-dimensional graphical depiction of Mogul quality analysis of bond lengths, bond angles, torsion angles, and ring geometry for all instances of the Ligand of Interest. In addition, ligands with molecular weight > 250 and outliers as shown on the validation Tables will also be included. For torsion angles, if less than 5% of the Mogul distribution of torsion angles is within 10 degrees of the torsion angle in question, then that torsion angle is considered an outlier. Any bond that is central to one or more torsion angles identified as an outlier by Mogul will be highlighted in the graph. For rings, the root-mean-square deviation (RMSD) between the ring in question and similar rings identified by Mogul is calculated over all ring torsion angles. If the average RMSD is greater than 60 degrees and the minimal RMSD between the ring in question and any Mogul-identified rings is also greater than 60 degrees, then that ring is considered an outlier. The outliers are highlighted in purple. The color gray indicates Mogul did not find sufficient equivalents in the CSD to analyse the geometry.











## 5.7 Other polymers [\(i\)](#)

There are no such residues in this entry.

## 5.8 Polymer linkage issues [\(i\)](#)

There are no chain breaks in this entry.

## 6 Fit of model and data [i](#)

### 6.1 Protein, DNA and RNA chains [i](#)

In the following table, the column labelled ‘#RSRZ> 2’ contains the number (and percentage) of RSRZ outliers, followed by percent RSRZ outliers for the chain as percentile scores relative to all X-ray entries and entries of similar resolution. The OWAB column contains the minimum, median, 95<sup>th</sup> percentile and maximum values of the occupancy-weighted average B-factor per residue. The column labelled ‘Q< 0.9’ lists the number of (and percentage) of residues with an average occupancy less than 0.9.

Mol	Chain	Analysed	<RSRZ>	#RSRZ>2	OWAB(Å <sup>2</sup> )	Q<0.9
1	A	112/112 (100%)	-0.43	1 (0%) 84 86	23, 31, 44, 61	0
1	B	112/112 (100%)	-0.39	1 (0%) 84 86	25, 32, 46, 53	0
1	C	112/112 (100%)	-0.48	0 100 100	22, 32, 47, 54	0
All	All	336/336 (100%)	-0.43	2 (0%) 89 91	22, 32, 46, 61	0

All (2) RSRZ outliers are listed below:

Mol	Chain	Res	Type	RSRZ
1	A	1	GLY	3.1
1	B	1	GLY	2.1

### 6.2 Non-standard residues in protein, DNA, RNA chains [i](#)

There are no non-standard protein/DNA/RNA residues in this entry.

### 6.3 Carbohydrates [i](#)

There are no monosaccharides in this entry.

### 6.4 Ligands [i](#)

In the following table, the Atoms column lists the number of modelled atoms in the group and the number defined in the chemical component dictionary. The B-factors column lists the minimum, median, 95<sup>th</sup> percentile and maximum values of B factors of atoms in the group. The column labelled ‘Q< 0.9’ lists the number of atoms with occupancy less than 0.9.

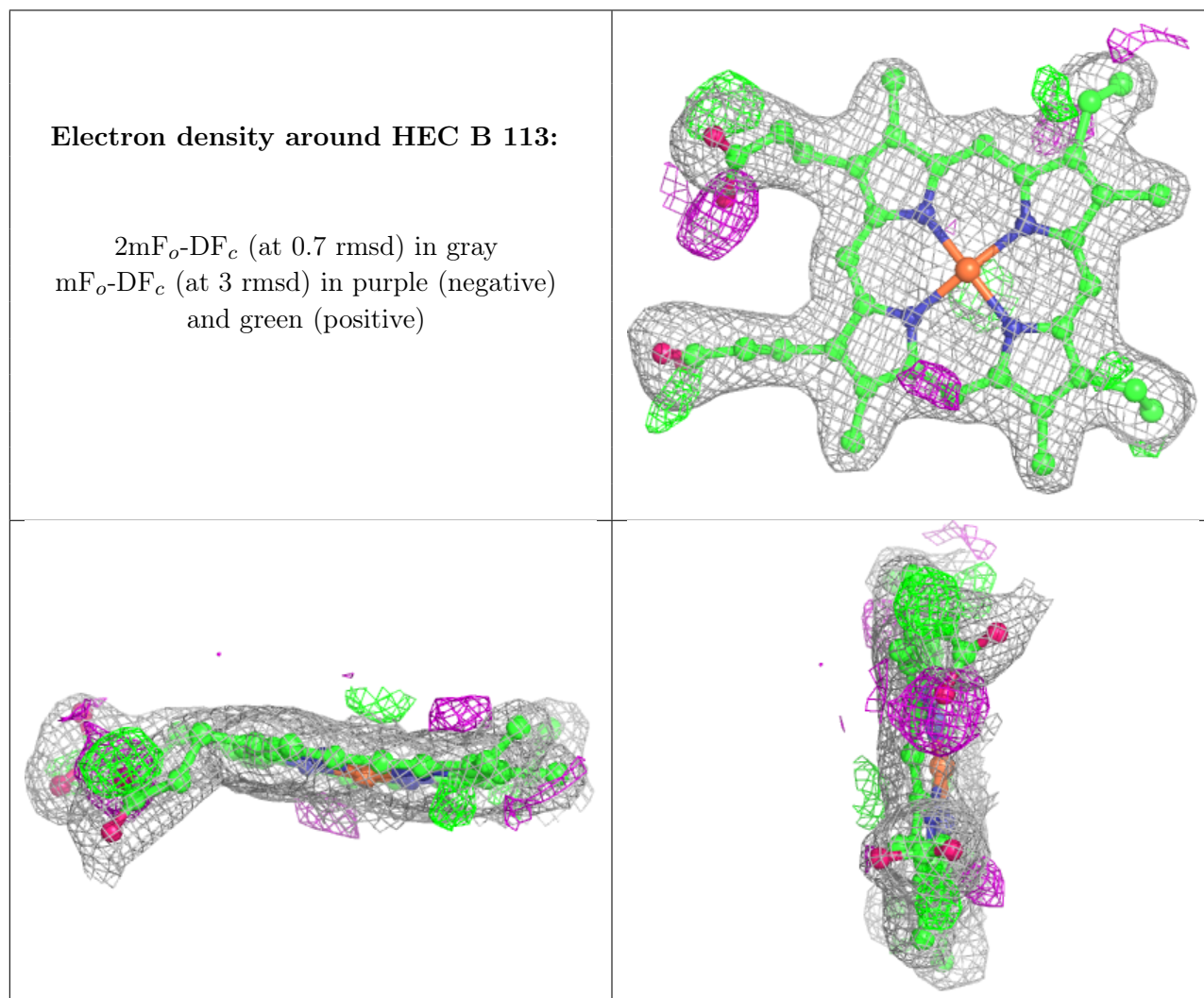
Mol	Type	Chain	Res	Atoms	RSCC	RSR	B-factors(Å <sup>2</sup> )	Q<0.9
2	HEC	B	113	43/43	0.95	0.12	26,29,44,56	0

*Continued on next page...*

*Continued from previous page...*

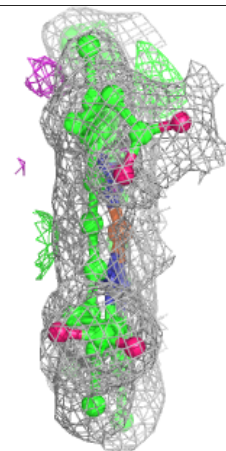
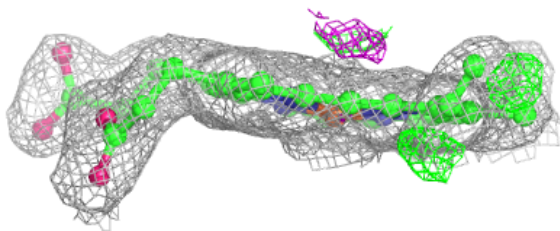
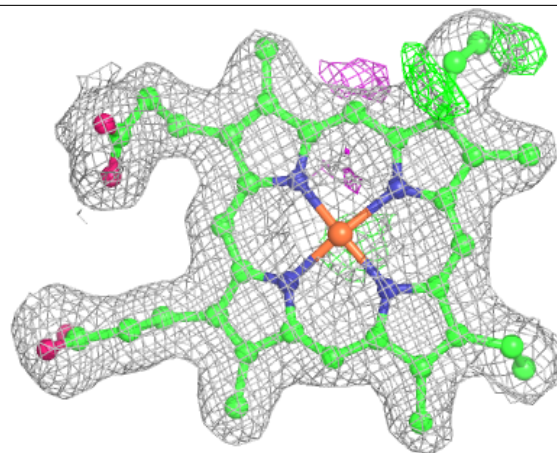
Mol	Type	Chain	Res	Atoms	RSCC	RSR	B-factors( $\text{\AA}^2$ )	Q<0.9
2	HEC	A	113[B]	43/43	0.97	0.10	21,27,31,34	2
2	HEC	A	113[A]	43/43	0.97	0.10	21,27,31,34	2
2	HEC	C	113	43/43	0.97	0.10	23,29,44,52	0

The following is a graphical depiction of the model fit to experimental electron density of all instances of the Ligand of Interest. In addition, ligands with molecular weight > 250 and outliers as shown on the geometry validation Tables will also be included. Each fit is shown from different orientation to approximate a three-dimensional view.



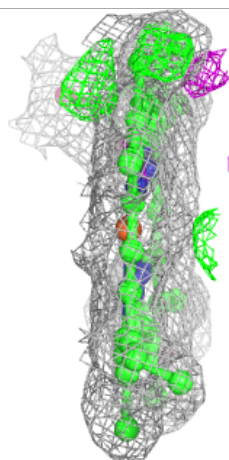
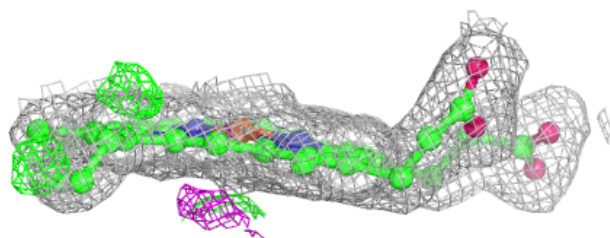
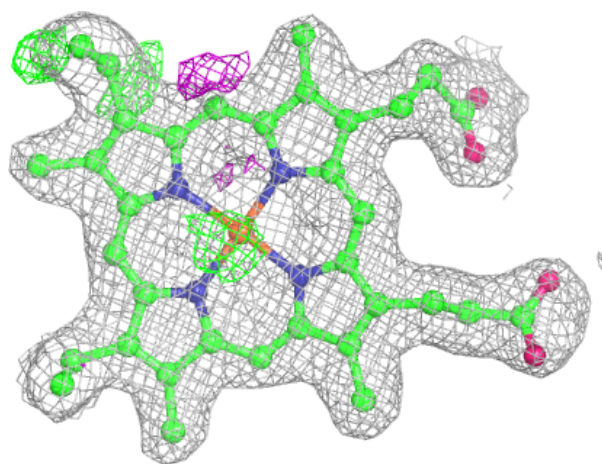
**Electron density around HEC A 113 (B):**

$2mF_o-DF_c$  (at 0.7 rmsd) in gray  
 $mF_o-DF_c$  (at 3 rmsd) in purple (negative)  
and green (positive)

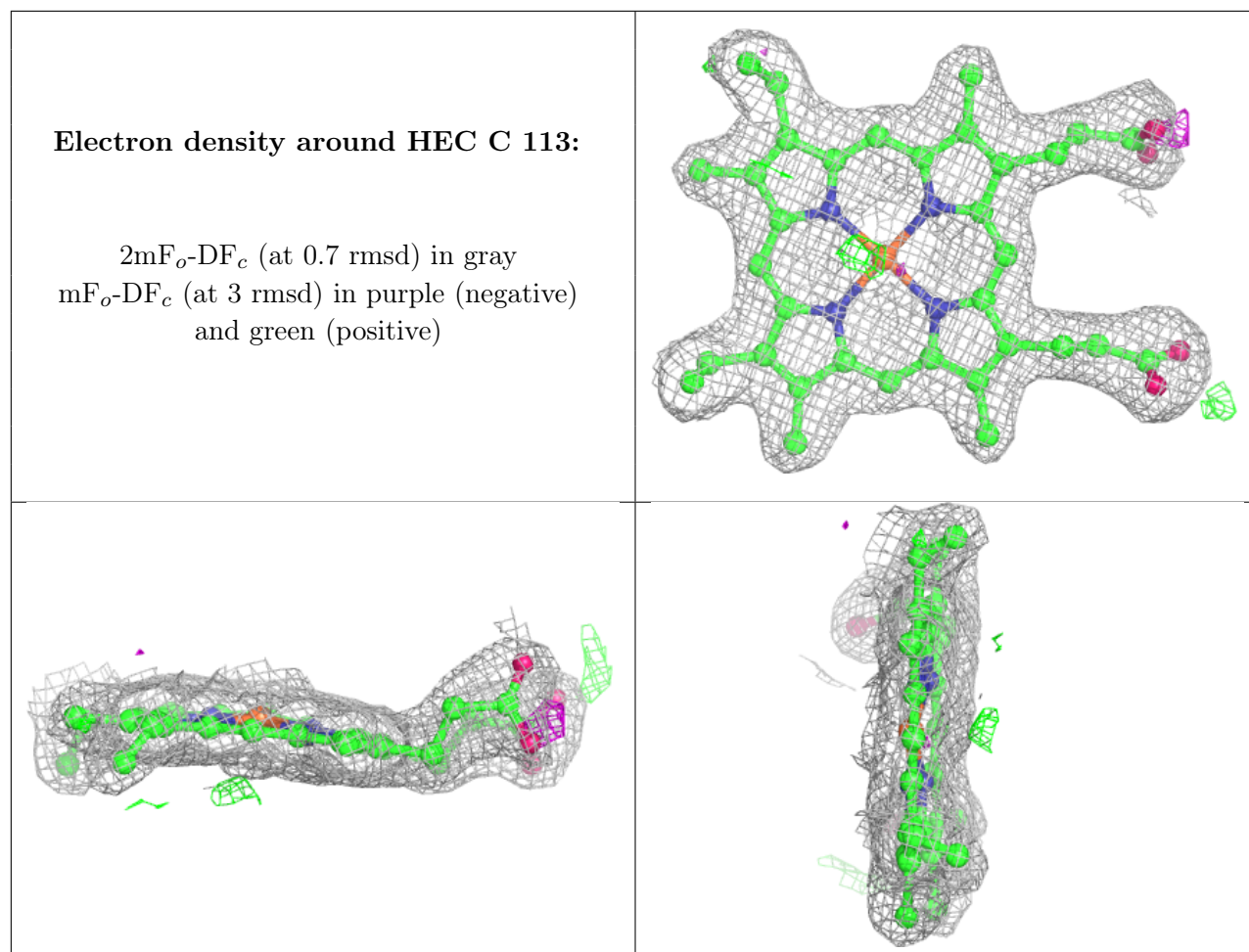


**Electron density around HEC A 113 (A):**

$2mF_o-DF_c$  (at 0.7 rmsd) in gray  
 $mF_o-DF_c$  (at 3 rmsd) in purple (negative)  
and green (positive)







## 6.5 Other polymers [i](#)

There are no such residues in this entry.