



Full wwPDB X-ray Structure Validation Report ⓘ

Feb 25, 2024 – 06:07 AM EST

PDB ID : 5DW0
Title : TrpB from *Pyrococcus furiosus* with L-serine bound as the external aldimine
Authors : Buller, A.R.; Arnold, F.H.
Deposited on : 2015-09-22
Resolution : 2.01 Å(reported)

This is a Full wwPDB X-ray Structure Validation Report for a publicly released PDB entry.

We welcome your comments at validation@mail.wwpdb.org

A user guide is available at

<https://www.wwpdb.org/validation/2017/XrayValidationReportHelp>

with specific help available everywhere you see the ⓘ symbol.

The types of validation reports are described at

<http://www.wwpdb.org/validation/2017/FAQs#types>.

The following versions of software and data (see [references ⓘ](#)) were used in the production of this report:

MolProbity : 4.02b-467
Mogul : 1.8.5 (274361), CSD as541be (2020)
Xtriage (Phenix) : 1.13
EDS : 2.36
buster-report : 1.1.7 (2018)
Percentile statistics : 20191225.v01 (using entries in the PDB archive December 25th 2019)
Refmac : 5.8.0158
CCP4 : 7.0.044 (Gargrove)
Ideal geometry (proteins) : Engh & Huber (2001)
Ideal geometry (DNA, RNA) : Parkinson et al. (1996)
Validation Pipeline (wwPDB-VP) : 2.36

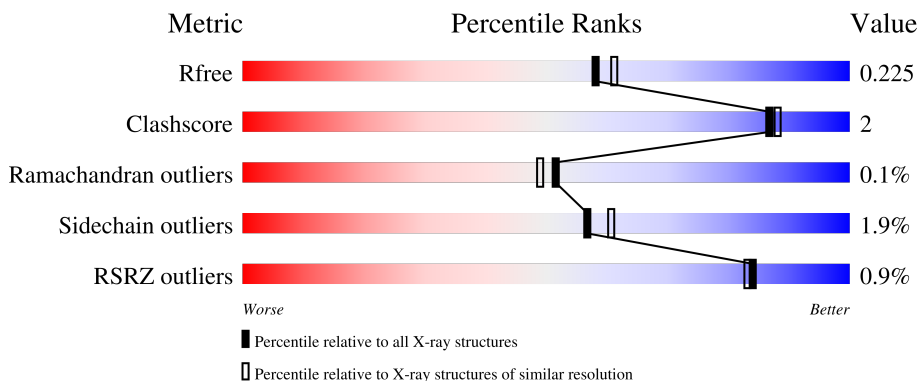
1 Overall quality at a glance

The following experimental techniques were used to determine the structure:

X-RAY DIFFRACTION

The reported resolution of this entry is 2.01 Å.

Percentile scores (ranging between 0-100) for global validation metrics of the entry are shown in the following graphic. The table shows the number of entries on which the scores are based.



Metric	Whole archive (#Entries)	Similar resolution (#Entries, resolution range(Å))
R_{free}	130704	8085 (2.00-2.00)
Clashscore	141614	9178 (2.00-2.00)
Ramachandran outliers	138981	9054 (2.00-2.00)
Sidechain outliers	138945	9053 (2.00-2.00)
RSRZ outliers	127900	7900 (2.00-2.00)

The table below summarises the geometric issues observed across the polymeric chains and their fit to the electron density. The red, orange, yellow and green segments of the lower bar indicate the fraction of residues that contain outliers for ≥ 3 , 2, 1 and 0 types of geometric quality criteria respectively. A grey segment represents the fraction of residues that are not modelled. The numeric value for each fraction is indicated below the corresponding segment, with a dot representing fractions $\leq 5\%$. The upper red bar (where present) indicates the fraction of residues that have poor fit to the electron density. The numeric value is given above the bar.

Mol	Chain	Length	Quality of chain
1	A	396	 93% 5%
1	B	396	 89% 8%
1	C	396	 90% 7%
1	D	396	 90% 7%

2 Entry composition i

There are 4 unique types of molecules in this entry. The entry contains 11976 atoms, of which 0 are hydrogens and 0 are deuteriums.

In the tables below, the ZeroOcc column contains the number of atoms modelled with zero occupancy, the AltConf column contains the number of residues with at least one atom in alternate conformation and the Trace column contains the number of residues modelled with at most 2 atoms.

- Molecule 1 is a protein called Tryptophan synthase beta chain 1.

Mol	Chain	Residues	Atoms					ZeroOcc	AltConf	Trace
			Total	C	N	O	S			
1	A	388	2926	1870	505	539	12	0	0	0
1	B	385	2913	1861	502	538	12	0	0	0
1	C	385	2914	1864	502	536	12	0	1	0
1	D	385	2915	1865	503	535	12	0	0	0

There are 32 discrepancies between the modelled and reference sequences:

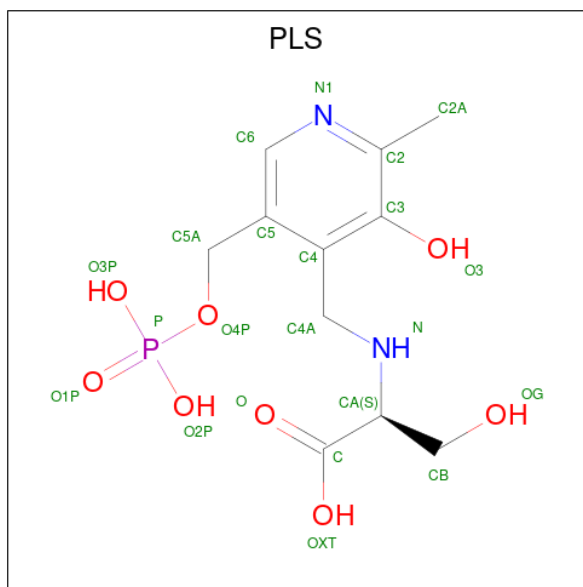
Chain	Residue	Modelled	Actual	Comment	Reference
A	389	LEU	-	expression tag	UNP Q8U093
A	390	GLU	-	expression tag	UNP Q8U093
A	391	HIS	-	expression tag	UNP Q8U093
A	392	HIS	-	expression tag	UNP Q8U093
A	393	HIS	-	expression tag	UNP Q8U093
A	394	HIS	-	expression tag	UNP Q8U093
A	395	HIS	-	expression tag	UNP Q8U093
A	396	HIS	-	expression tag	UNP Q8U093
B	389	LEU	-	expression tag	UNP Q8U093
B	390	GLU	-	expression tag	UNP Q8U093
B	391	HIS	-	expression tag	UNP Q8U093
B	392	HIS	-	expression tag	UNP Q8U093
B	393	HIS	-	expression tag	UNP Q8U093
B	394	HIS	-	expression tag	UNP Q8U093
B	395	HIS	-	expression tag	UNP Q8U093
B	396	HIS	-	expression tag	UNP Q8U093
C	389	LEU	-	expression tag	UNP Q8U093
C	390	GLU	-	expression tag	UNP Q8U093
C	391	HIS	-	expression tag	UNP Q8U093
C	392	HIS	-	expression tag	UNP Q8U093
C	393	HIS	-	expression tag	UNP Q8U093

Continued on next page...

Continued from previous page...

Chain	Residue	Modelled	Actual	Comment	Reference
C	394	HIS	-	expression tag	UNP Q8U093
C	395	HIS	-	expression tag	UNP Q8U093
C	396	HIS	-	expression tag	UNP Q8U093
D	389	LEU	-	expression tag	UNP Q8U093
D	390	GLU	-	expression tag	UNP Q8U093
D	391	HIS	-	expression tag	UNP Q8U093
D	392	HIS	-	expression tag	UNP Q8U093
D	393	HIS	-	expression tag	UNP Q8U093
D	394	HIS	-	expression tag	UNP Q8U093
D	395	HIS	-	expression tag	UNP Q8U093
D	396	HIS	-	expression tag	UNP Q8U093

- Molecule 2 is [3-HYDROXY-2-METHYL-5-PHOSPHONOXYMETHYL-PYRIDIN-4-YL METHYL]-SERINE (three-letter code: PLS) (formula: C₁₁H₁₇N₂O₈P).



Mol	Chain	Residues	Atoms				ZeroOcc	AltConf	
2	A	1	Total	C	N	O	P	0	0
			22	11	2	8	1		
2	B	1	Total	C	N	O	P	0	0
			22	11	2	8	1		
2	C	1	Total	C	N	O	P	0	0
			22	11	2	8	1		
2	D	1	Total	C	N	O	P	0	0
			22	11	2	8	1		

- Molecule 3 is SODIUM ION (three-letter code: NA) (formula: Na).

Mol	Chain	Residues	Atoms	ZeroOcc	AltConf
3	A	1	Total Na 1 1	0	0
3	B	1	Total Na 1 1	0	0
3	C	1	Total Na 1 1	0	0
3	D	1	Total Na 1 1	0	0

- Molecule 4 is water.

Mol	Chain	Residues	Atoms	ZeroOcc	AltConf
4	A	70	Total O 70 70	0	0
4	B	46	Total O 46 46	0	0
4	C	49	Total O 49 49	0	0
4	D	51	Total O 51 51	0	0

4 Data and refinement statistics

Property	Value	Source
Space group	P 21 21 21	Depositor
Cell constants a, b, c, α , β , γ	84.24Å 109.13Å 160.80Å 90.00° 90.00° 90.00°	Depositor
Resolution (Å)	40.00 – 2.01 39.30 – 2.01	Depositor EDS
% Data completeness (in resolution range)	97.8 (40.00-2.01) 97.8 (39.30-2.01)	Depositor EDS
R_{merge}	(Not available)	Depositor
R_{sym}	(Not available)	Depositor
$\langle I/\sigma(I) \rangle$ ¹	1.33 (at 2.01Å)	Xtrriage
Refinement program	REFMAC 5.8.0073	Depositor
R, R_{free}	0.176 , 0.221 0.186 , 0.225	Depositor DCC
R_{free} test set	4812 reflections (4.99%)	wwPDB-VP
Wilson B-factor (Å ²)	35.3	Xtrriage
Anisotropy	0.153	Xtrriage
Bulk solvent k_{sol} (e/Å ³), B_{sol} (Å ²)	0.33 , 37.2	EDS
L-test for twinning ²	$\langle L \rangle = 0.48$, $\langle L^2 \rangle = 0.31$	Xtrriage
Estimated twinning fraction	No twinning to report.	Xtrriage
F_o, F_c correlation	0.97	EDS
Total number of atoms	11976	wwPDB-VP
Average B, all atoms (Å ²)	43.0	wwPDB-VP

Xtrriage's analysis on translational NCS is as follows: *The largest off-origin peak in the Patterson function is 6.32% of the height of the origin peak. No significant pseudotranslation is detected.*

¹Intensities estimated from amplitudes.

²Theoretical values of $\langle |L| \rangle$, $\langle L^2 \rangle$ for acentric reflections are 0.5, 0.333 respectively for untwinned datasets, and 0.375, 0.2 for perfectly twinned datasets.

5 Model quality [i](#)

5.1 Standard geometry [i](#)

Bond lengths and bond angles in the following residue types are not validated in this section: PLS, NA

The Z score for a bond length (or angle) is the number of standard deviations the observed value is removed from the expected value. A bond length (or angle) with $|Z| > 5$ is considered an outlier worth inspection. RMSZ is the root-mean-square of all Z scores of the bond lengths (or angles).

Mol	Chain	Bond lengths		Bond angles	
		RMSZ	# Z >5	RMSZ	# Z >5
1	A	0.68	0/2987	0.72	0/4046
1	B	0.63	0/2974	0.70	2/4028 (0.0%)
1	C	0.69	0/2979	0.72	0/4035
1	D	0.62	0/2976	0.69	2/4028 (0.0%)
All	All	0.66	0/11916	0.71	4/16137 (0.0%)

There are no bond length outliers.

All (4) bond angle outliers are listed below:

Mol	Chain	Res	Type	Atoms	Z	Observed(°)	Ideal(°)
1	D	58	ARG	NE-CZ-NH2	-5.94	117.33	120.30
1	B	58	ARG	NE-CZ-NH2	-5.54	117.53	120.30
1	D	58	ARG	NE-CZ-NH1	5.48	123.04	120.30
1	B	143	ARG	NE-CZ-NH2	5.00	122.80	120.30

There are no chirality outliers.

There are no planarity outliers.

5.2 Too-close contacts [i](#)

In the following table, the Non-H and H(model) columns list the number of non-hydrogen atoms and hydrogen atoms in the chain respectively. The H(added) column lists the number of hydrogen atoms added and optimized by MolProbity. The Clashes column lists the number of clashes within the asymmetric unit, whereas Symm-Clashes lists symmetry-related clashes.

Mol	Chain	Non-H	H(model)	H(added)	Clashes	Symm-Clashes
1	A	2926	0	2888	10	0
1	B	2913	0	2872	13	0
1	C	2914	0	2875	13	0

Continued on next page...

Continued from previous page...

Mol	Chain	Non-H	H(model)	H(added)	Clashes	Symm-Clashes
1	D	2915	0	2892	13	0
2	A	22	0	13	0	0
2	B	22	0	14	1	0
2	C	22	0	13	0	0
2	D	22	0	13	0	0
3	A	1	0	0	0	0
3	B	1	0	0	0	0
3	C	1	0	0	0	0
3	D	1	0	0	0	0
4	A	70	0	0	0	0
4	B	46	0	0	1	0
4	C	49	0	0	1	0
4	D	51	0	0	1	0
All	All	11976	0	11580	48	0

The all-atom clashscore is defined as the number of clashes found per 1000 atoms (including hydrogen atoms). The all-atom clashscore for this structure is 2.

All (48) close contacts within the same asymmetric unit are listed below, sorted by their clash magnitude.

Atom-1	Atom-2	Interatomic distance (Å)	Clash overlap (Å)
1:C:62:LYS:HE2	1:C:333:GLU:OE2	1.71	0.89
1:D:13:GLU:HA	1:D:16:ILE:HD12	1.80	0.64
1:C:13:GLU:HA	1:C:16:ILE:HD13	1.80	0.63
1:D:328:LEU:HD11	1:D:384:VAL:HG11	1.84	0.59
1:C:160:THR:HG23	4:C:544:HOH:O	2.03	0.57
1:A:77:HIS:NE2	1:A:116:MET:HE3	2.21	0.56
1:A:77:HIS:CD2	1:A:116:MET:CE	2.89	0.56
1:D:143:ARG:HD3	4:D:508:HOH:O	2.06	0.55
1:D:110:HIS:CE1	1:D:184:GLY:HA2	2.43	0.53
1:D:155:ASN:HA	1:D:159:ARG:HG2	1.90	0.51
1:B:351:ALA:HA	1:B:354:MET:HE2	1.92	0.50
1:C:77:HIS:CD2	1:C:116:MET:CE	2.94	0.50
1:B:155:ASN:HA	1:B:159:ARG:HG2	1.91	0.50
1:B:13:GLU:HA	1:B:16:ILE:HD13	1.93	0.49
1:B:160:THR:HG23	4:B:521:HOH:O	2.12	0.49
1:D:283:GLN:HA	1:D:288:GLN:O	2.13	0.49
1:A:77:HIS:NE2	1:A:116:MET:CE	2.76	0.48
1:B:110:HIS:CE1	1:B:184:GLY:HA2	2.48	0.48
1:D:301:TYR:CD1	1:D:302:PRO:HD2	2.49	0.47
1:B:19:LEU:O	1:B:23:GLU:HG3	2.14	0.47

Continued on next page...

Continued from previous page...

Atom-1	Atom-2	Interatomic distance (Å)	Clash overlap (Å)
1:D:157:GLY:HA3	1:D:163:ASP:OD1	2.14	0.47
1:B:102:ILE:HA	1:B:126:ASP:O	2.14	0.47
1:C:138:LYS:H	1:C:138:LYS:CD	2.27	0.46
1:D:10:TYR:O	1:D:276:GLY:HA2	2.15	0.45
1:D:266:LEU:HD13	1:D:319:TYR:CG	2.52	0.45
1:C:301:TYR:CD1	1:C:302:PRO:HD2	2.51	0.45
1:A:126:ASP:OD1	1:A:150:ASN:HB3	2.17	0.44
1:A:155:ASN:HA	1:A:159:ARG:HG2	1.99	0.44
1:C:328:LEU:HD21	1:C:384:VAL:HG11	2.00	0.44
1:A:382:LEU:HD21	1:B:138:LYS:HE2	1.99	0.44
1:C:17:GLU:CB	1:C:18:PRO:CD	2.96	0.44
1:D:328:LEU:CD1	1:D:384:VAL:HG11	2.47	0.44
1:B:230:SER:OG	2:B:401:PLS:O3P	2.24	0.44
1:C:36:ASN:O	1:C:40:ASN:ND2	2.51	0.43
1:C:77:HIS:CD2	1:C:116:MET:HE1	2.53	0.43
1:A:69:TYR:OH	1:A:215:GLU:OE2	2.30	0.43
1:A:167:GLU:OE2	1:A:170:ARG:NH1	2.52	0.43
1:D:190:HIS:ND1	1:D:191:PRO:HA	2.33	0.43
1:A:142:PHE:CE2	1:A:146:LEU:HD11	2.55	0.42
1:D:330:ALA:HA	1:D:354:MET:HE1	2.02	0.41
1:B:11:VAL:HB	1:B:15:LEU:HD12	2.02	0.41
1:A:74:ASP:HB2	1:A:373:ARG:HB3	2.02	0.41
1:B:284:ASP:OD1	1:B:287:GLY:N	2.54	0.41
1:C:350:VAL:O	1:C:354:MET:HG3	2.21	0.41
1:B:104:GLU:HG3	1:B:165:ILE:HG12	2.03	0.41
1:C:257:LEU:HD23	1:C:257:LEU:HA	1.81	0.41
1:C:128:TYR:OH	1:C:171:ASP:OD2	2.31	0.41
1:B:74:ASP:HB2	1:B:373:ARG:HB3	2.03	0.41

There are no symmetry-related clashes.

5.3 Torsion angles [\(i\)](#)

5.3.1 Protein backbone [\(i\)](#)

In the following table, the Percentiles column shows the percent Ramachandran outliers of the chain as a percentile score with respect to all X-ray entries followed by that with respect to entries of similar resolution.

The Analysed column shows the number of residues for which the backbone conformation was analysed, and the total number of residues.

Mol	Chain	Analysed	Favoured	Allowed	Outliers	Percentiles	
1	A	386/396 (98%)	377 (98%)	9 (2%)	0	100	100
1	B	383/396 (97%)	373 (97%)	9 (2%)	1 (0%)	41	37
1	C	384/396 (97%)	375 (98%)	9 (2%)	0	100	100
1	D	383/396 (97%)	376 (98%)	6 (2%)	1 (0%)	41	37
All	All	1536/1584 (97%)	1501 (98%)	33 (2%)	2 (0%)	51	49

All (2) Ramachandran outliers are listed below:

Mol	Chain	Res	Type
1	D	186	VAL
1	B	186	VAL

5.3.2 Protein sidechains [i](#)

In the following table, the Percentiles column shows the percent sidechain outliers of the chain as a percentile score with respect to all X-ray entries followed by that with respect to entries of similar resolution.

The Analysed column shows the number of residues for which the sidechain conformation was analysed, and the total number of residues.

Mol	Chain	Analysed	Rotameric	Outliers	Percentiles	
1	A	291/316 (92%)	287 (99%)	4 (1%)	67	72
1	B	290/316 (92%)	284 (98%)	6 (2%)	53	57
1	C	290/316 (92%)	282 (97%)	8 (3%)	43	44
1	D	291/316 (92%)	287 (99%)	4 (1%)	67	72
All	All	1162/1264 (92%)	1140 (98%)	22 (2%)	57	61

All (22) residues with a non-rotameric sidechain are listed below:

Mol	Chain	Res	Type
1	A	139	MET
1	A	328	LEU
1	A	346	SER
1	A	363	ASP
1	B	123	MET
1	B	138	LYS
1	B	267	ASN
1	B	270	GLN
1	B	283	GLN

Continued on next page...

Continued from previous page...

Mol	Chain	Res	Type
1	B	361	SER
1	C	138	LYS
1	C	139	MET
1	C	162	LYS
1	C	217	GLN
1	C	336	ARG
1	C	361	SER
1	C	379	ASP
1	C	385	SER
1	D	30	LYS
1	D	150	ASN
1	D	152	ILE
1	D	233	MET

Sometimes sidechains can be flipped to improve hydrogen bonding and reduce clashes. All (2) such sidechains are listed below:

Mol	Chain	Res	Type
1	B	89	GLN
1	C	40	ASN

5.3.3 RNA [i](#)

There are no RNA molecules in this entry.

5.4 Non-standard residues in protein, DNA, RNA chains [i](#)

There are no non-standard protein/DNA/RNA residues in this entry.

5.5 Carbohydrates [i](#)

There are no monosaccharides in this entry.

5.6 Ligand geometry [i](#)

Of 8 ligands modelled in this entry, 4 are monoatomic - leaving 4 for Mogul analysis.

In the following table, the Counts columns list the number of bonds (or angles) for which Mogul statistics could be retrieved, the number of bonds (or angles) that are observed in the model and the number of bonds (or angles) that are defined in the Chemical Component Dictionary. The

Link column lists molecule types, if any, to which the group is linked. The Z score for a bond length (or angle) is the number of standard deviations the observed value is removed from the expected value. A bond length (or angle) with $|Z| > 2$ is considered an outlier worth inspection. RMSZ is the root-mean-square of all Z scores of the bond lengths (or angles).

Mol	Type	Chain	Res	Link	Bond lengths			Bond angles		
					Counts	RMSZ	# Z > 2	Counts	RMSZ	# Z > 2
2	PLS	C	401	-	22,22,22	1.89	3 (13%)	27,31,31	1.71	7 (25%)
2	PLS	D	401	-	22,22,22	2.57	4 (18%)	27,31,31	1.96	5 (18%)
2	PLS	B	401	-	22,22,22	2.27	4 (18%)	27,31,31	1.88	8 (29%)
2	PLS	A	401	-	22,22,22	1.85	3 (13%)	27,31,31	1.61	6 (22%)

In the following table, the Chirals column lists the number of chiral outliers, the number of chiral centers analysed, the number of these observed in the model and the number defined in the Chemical Component Dictionary. Similar counts are reported in the Torsion and Rings columns. '-' means no outliers of that kind were identified.

Mol	Type	Chain	Res	Link	Chirals	Torsions	Rings
2	PLS	C	401	-	-	3/17/17/17	0/1/1/1
2	PLS	D	401	-	-	4/17/17/17	0/1/1/1
2	PLS	B	401	-	-	3/17/17/17	0/1/1/1
2	PLS	A	401	-	-	4/17/17/17	0/1/1/1

All (14) bond length outliers are listed below:

Mol	Chain	Res	Type	Atoms	Z	Observed(Å)	Ideal(Å)
2	D	401	PLS	C3-C2	7.93	1.48	1.40
2	B	401	PLS	C3-C2	6.36	1.47	1.40
2	C	401	PLS	C5-C4	6.02	1.48	1.40
2	D	401	PLS	C3-C4	5.60	1.48	1.40
2	D	401	PLS	C5-C4	5.52	1.48	1.40
2	B	401	PLS	C5-C4	5.41	1.48	1.40
2	A	401	PLS	C3-C2	4.96	1.45	1.40
2	A	401	PLS	C5-C4	4.94	1.47	1.40
2	B	401	PLS	C3-C4	4.64	1.47	1.40
2	C	401	PLS	C3-C2	3.80	1.44	1.40
2	C	401	PLS	C3-C4	3.55	1.45	1.40
2	A	401	PLS	C3-C4	3.38	1.45	1.40
2	B	401	PLS	C4A-C4	-2.75	1.48	1.51
2	D	401	PLS	C2-N1	2.19	1.38	1.33

All (26) bond angle outliers are listed below:

Mol	Chain	Res	Type	Atoms	Z	Observed(°)	Ideal(°)
2	D	401	PLS	C4A-C4-C3	5.98	126.45	120.04
2	C	401	PLS	C4A-C4-C3	4.56	124.92	120.04
2	B	401	PLS	C4A-C4-C3	4.49	124.85	120.04
2	A	401	PLS	C4A-C4-C3	4.45	124.81	120.04
2	C	401	PLS	O4P-C5A-C5	3.30	115.63	109.35
2	B	401	PLS	O4P-P-O1P	-3.29	97.25	106.47
2	D	401	PLS	C4-C4A-N	3.16	120.48	111.78
2	D	401	PLS	C4A-C4-C5	-3.16	116.20	119.71
2	B	401	PLS	C4A-C4-C5	-2.97	116.41	119.71
2	C	401	PLS	C4A-C4-C5	-2.78	116.62	119.71
2	A	401	PLS	C4-C4A-N	2.58	118.89	111.78
2	B	401	PLS	C2A-C2-C3	-2.58	117.70	120.89
2	D	401	PLS	O3-C3-C2	2.58	123.12	117.49
2	B	401	PLS	O2P-P-O4P	2.55	113.51	106.73
2	B	401	PLS	O3P-P-O1P	2.39	120.03	110.68
2	A	401	PLS	O3P-P-O2P	2.35	116.62	107.64
2	A	401	PLS	C4A-C4-C5	-2.29	117.17	119.71
2	C	401	PLS	C2A-C2-C3	-2.28	118.07	120.89
2	A	401	PLS	O4P-C5A-C5	2.25	113.64	109.35
2	B	401	PLS	O4P-C5A-C5	2.16	113.47	109.35
2	C	401	PLS	C4-C3-C2	-2.14	116.78	120.06
2	A	401	PLS	O3-C3-C2	2.09	122.06	117.49
2	C	401	PLS	O3P-P-O2P	2.07	115.54	107.64
2	B	401	PLS	C5A-C5-C6	2.03	122.72	119.37
2	D	401	PLS	C5A-C5-C6	2.02	122.69	119.37
2	C	401	PLS	C4-C4A-N	2.00	117.29	111.78

There are no chirality outliers.

All (14) torsion outliers are listed below:

Mol	Chain	Res	Type	Atoms
2	A	401	PLS	C-CA-N-C4A
2	A	401	PLS	C3-C4-C4A-N
2	A	401	PLS	C5-C4-C4A-N
2	B	401	PLS	C-CA-N-C4A
2	B	401	PLS	C5-C4-C4A-N
2	C	401	PLS	C-CA-N-C4A
2	C	401	PLS	C5-C4-C4A-N
2	D	401	PLS	CB-CA-N-C4A
2	D	401	PLS	C-CA-N-C4A
2	D	401	PLS	C3-C4-C4A-N
2	D	401	PLS	C5-C4-C4A-N
2	A	401	PLS	CB-CA-N-C4A

Continued on next page...

Continued from previous page...

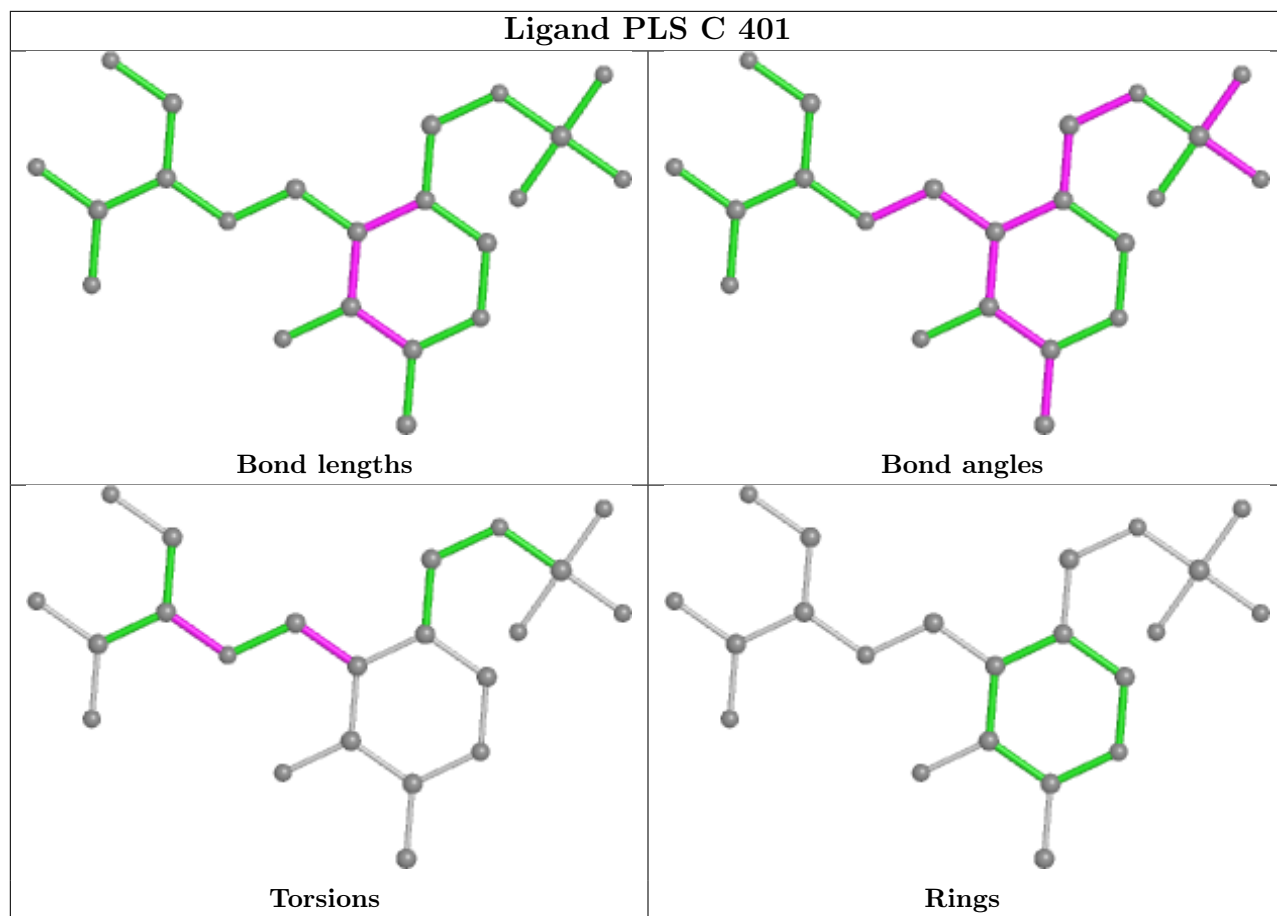
Mol	Chain	Res	Type	Atoms
2	B	401	PLS	C3-C4-C4A-N
2	C	401	PLS	C3-C4-C4A-N

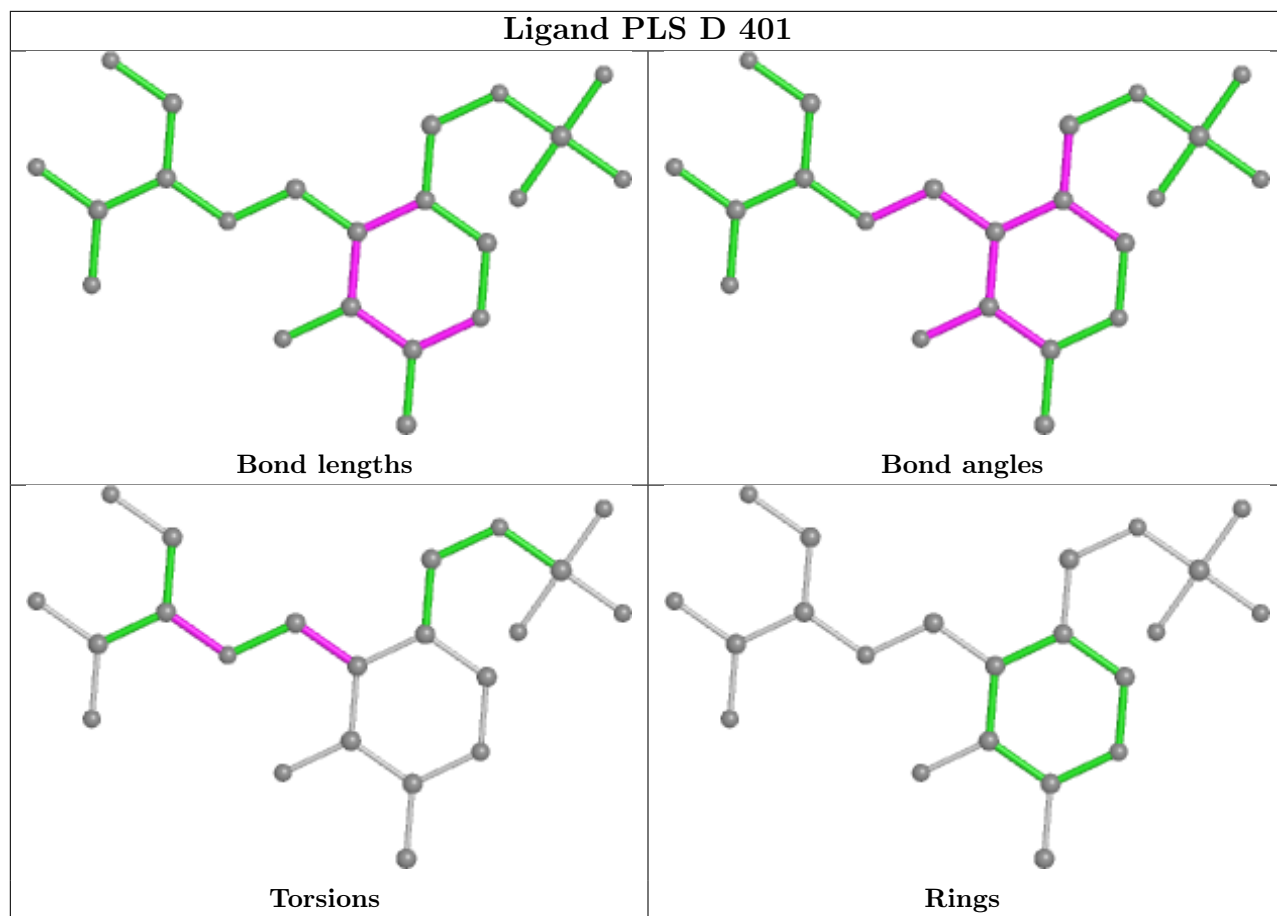
There are no ring outliers.

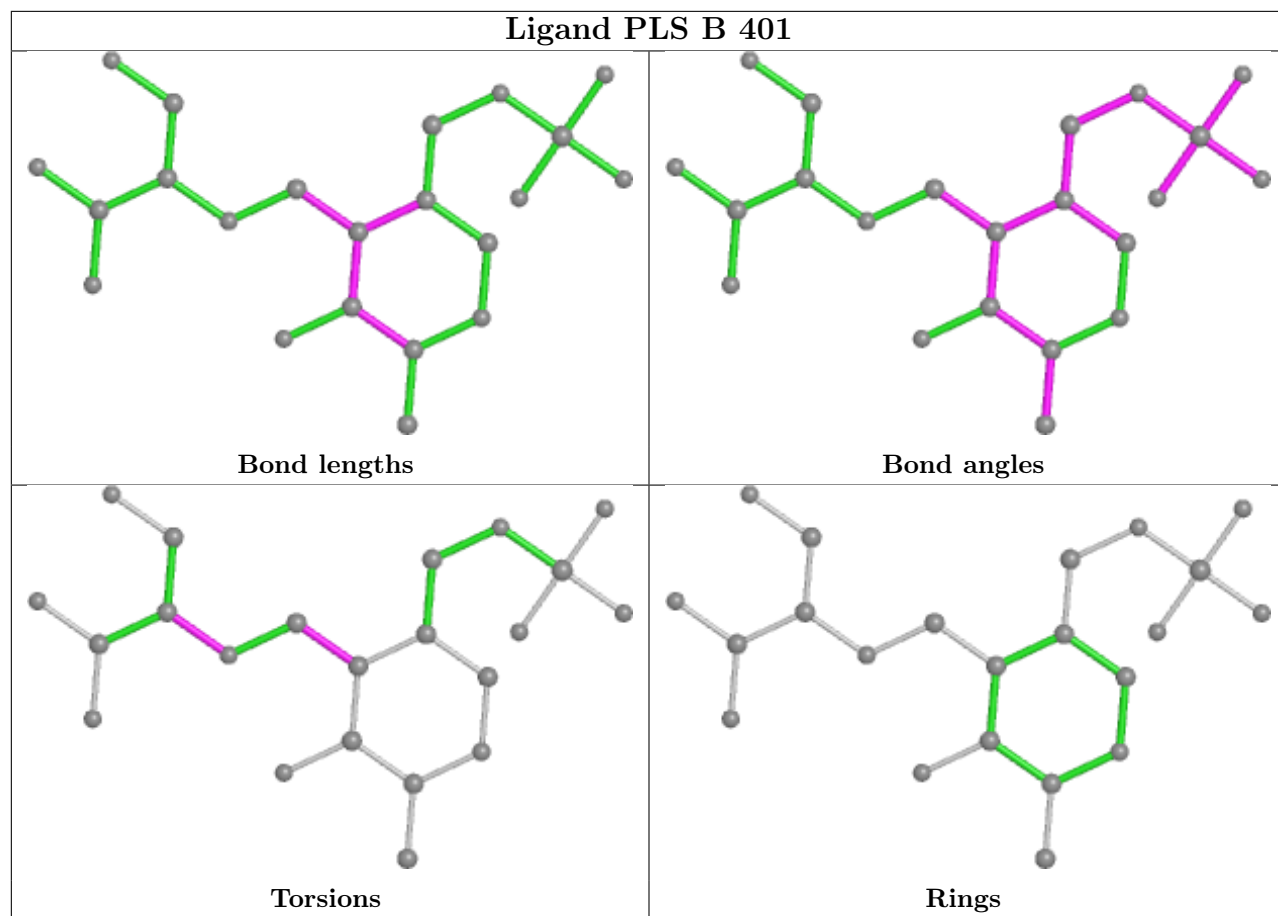
1 monomer is involved in 1 short contact:

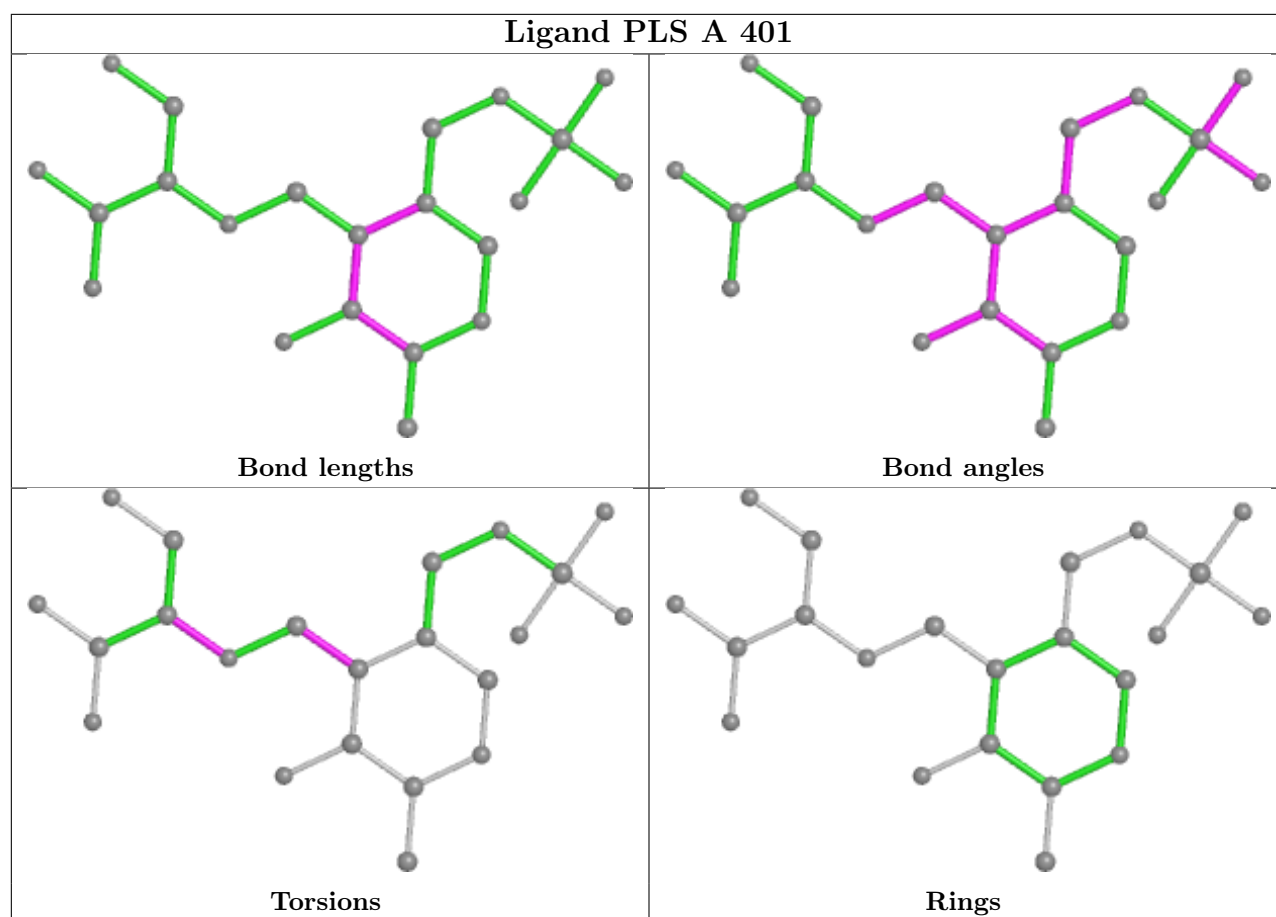
Mol	Chain	Res	Type	Clashes	Symm-Clashes
2	B	401	PLS	1	0

The following is a two-dimensional graphical depiction of Mogul quality analysis of bond lengths, bond angles, torsion angles, and ring geometry for all instances of the Ligand of Interest. In addition, ligands with molecular weight > 250 and outliers as shown on the validation Tables will also be included. For torsion angles, if less than 5% of the Mogul distribution of torsion angles is within 10 degrees of the torsion angle in question, then that torsion angle is considered an outlier. Any bond that is central to one or more torsion angles identified as an outlier by Mogul will be highlighted in the graph. For rings, the root-mean-square deviation (RMSD) between the ring in question and similar rings identified by Mogul is calculated over all ring torsion angles. If the average RMSD is greater than 60 degrees and the minimal RMSD between the ring in question and any Mogul-identified rings is also greater than 60 degrees, then that ring is considered an outlier. The outliers are highlighted in purple. The color gray indicates Mogul did not find sufficient equivalents in the CSD to analyse the geometry.









5.7 Other polymers [i](#)

There are no such residues in this entry.

5.8 Polymer linkage issues [i](#)

There are no chain breaks in this entry.

6 Fit of model and data [i](#)

6.1 Protein, DNA and RNA chains [i](#)

In the following table, the column labelled ‘#RSRZ > 2’ contains the number (and percentage) of RSRZ outliers, followed by percent RSRZ outliers for the chain as percentile scores relative to all X-ray entries and entries of similar resolution. The OWAB column contains the minimum, median, 95th percentile and maximum values of the occupancy-weighted average B-factor per residue. The column labelled ‘Q < 0.9’ lists the number of (and percentage) of residues with an average occupancy less than 0.9.

Mol	Chain	Analysed	<RSRZ>	#RSRZ>2	OWAB(Å ²)	Q<0.9
1	A	388/396 (97%)	-0.12	2 (0%) 91 90	27, 38, 59, 71	0
1	B	385/396 (97%)	-0.21	3 (0%) 86 85	28, 42, 66, 94	0
1	C	385/396 (97%)	-0.24	2 (0%) 91 90	26, 39, 60, 78	0
1	D	385/396 (97%)	0.02	7 (1%) 68 66	28, 43, 69, 84	0
All	All	1543/1584 (97%)	-0.14	14 (0%) 84 83	26, 41, 63, 94	0

All (14) RSRZ outliers are listed below:

Mol	Chain	Res	Type	RSRZ
1	B	286	GLU	3.5
1	D	285	GLU	2.9
1	D	75	LEU	2.4
1	B	284	ASP	2.4
1	A	31	ASP	2.4
1	B	13	GLU	2.3
1	C	75	LEU	2.3
1	D	76	VAL	2.3
1	D	156	SER	2.3
1	D	173	VAL	2.1
1	C	76	VAL	2.1
1	A	80	ALA	2.1
1	D	287	GLY	2.0
1	D	113	ALA	2.0

6.2 Non-standard residues in protein, DNA, RNA chains [i](#)

There are no non-standard protein/DNA/RNA residues in this entry.

6.3 Carbohydrates [i](#)

There are no monosaccharides in this entry.

6.4 Ligands [i](#)

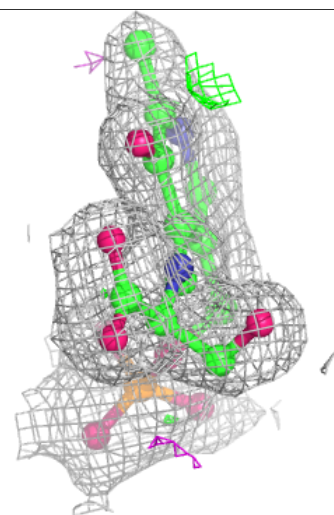
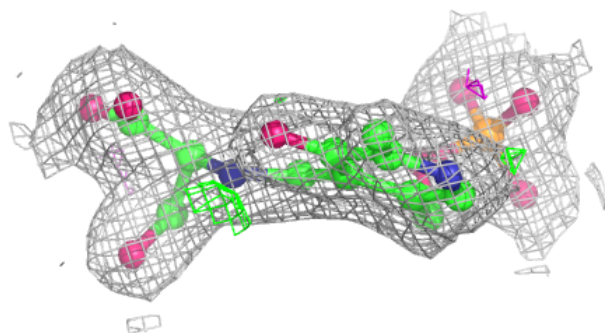
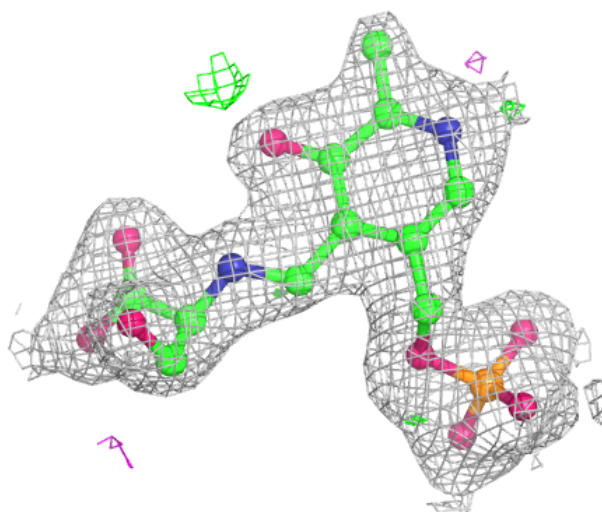
In the following table, the Atoms column lists the number of modelled atoms in the group and the number defined in the chemical component dictionary. The B-factors column lists the minimum, median, 95th percentile and maximum values of B factors of atoms in the group. The column labelled 'Q< 0.9' lists the number of atoms with occupancy less than 0.9.

Mol	Type	Chain	Res	Atoms	RSCC	RSR	B-factors(Å ²)	Q<0.9
3	NA	B	402	1/1	0.90	0.12	43,43,43,43	0
3	NA	A	402	1/1	0.94	0.11	42,42,42,42	0
3	NA	C	402	1/1	0.94	0.07	36,36,36,36	0
2	PLS	D	401	22/22	0.98	0.13	30,33,38,38	0
2	PLS	A	401	22/22	0.98	0.18	27,30,32,35	0
2	PLS	B	401	22/22	0.98	0.10	29,33,34,36	0
2	PLS	C	401	22/22	0.98	0.12	25,29,32,35	0
3	NA	D	402	1/1	0.98	0.08	38,38,38,38	0

The following is a graphical depiction of the model fit to experimental electron density of all instances of the Ligand of Interest. In addition, ligands with molecular weight > 250 and outliers as shown on the geometry validation Tables will also be included. Each fit is shown from different orientation to approximate a three-dimensional view.

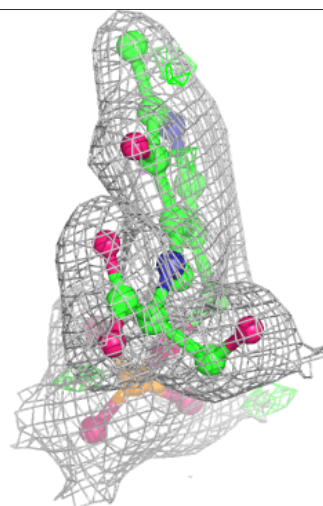
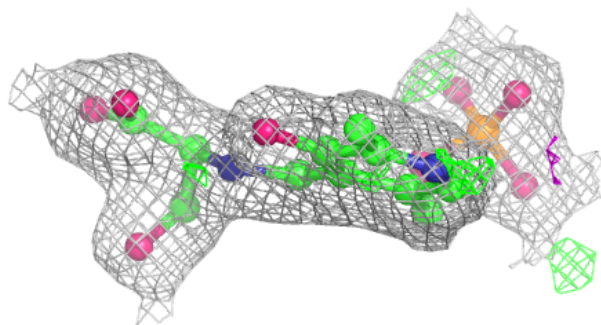
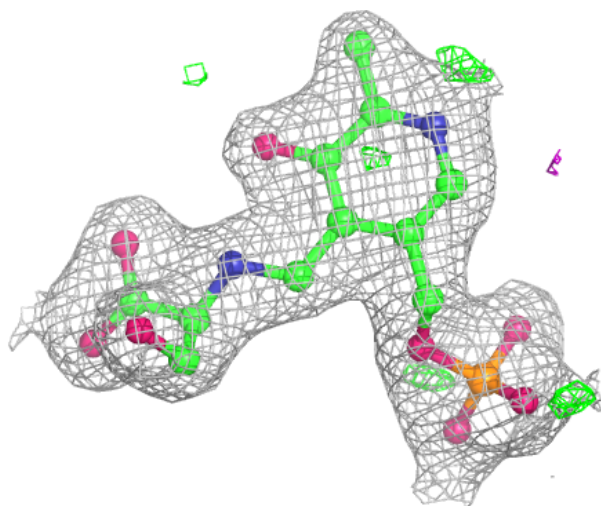
Electron density around PLS D 401:

$2mF_o-DF_c$ (at 0.7 rmsd) in gray
 mF_o-DF_c (at 3 rmsd) in purple (negative)
and green (positive)



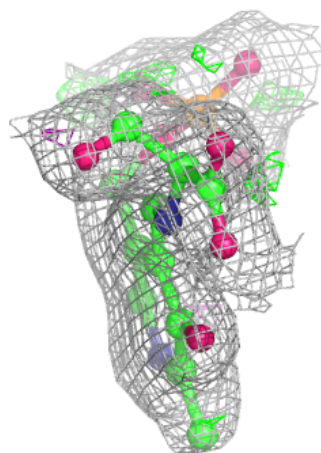
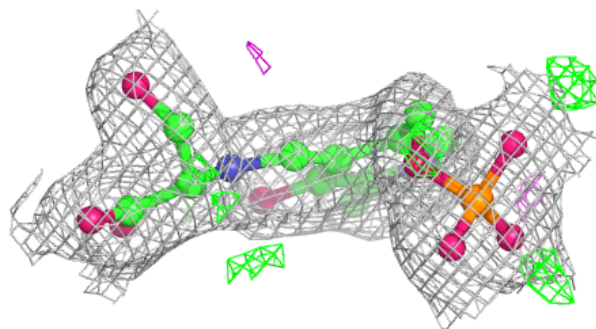
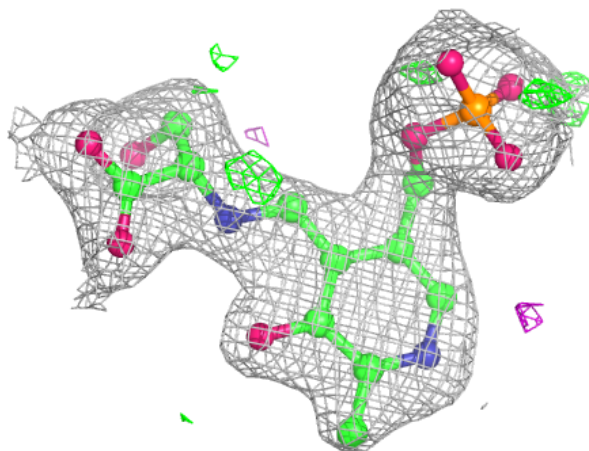
Electron density around PLS A 401:

$2mF_o-DF_c$ (at 0.7 rmsd) in gray
 mF_o-DF_c (at 3 rmsd) in purple (negative)
and green (positive)



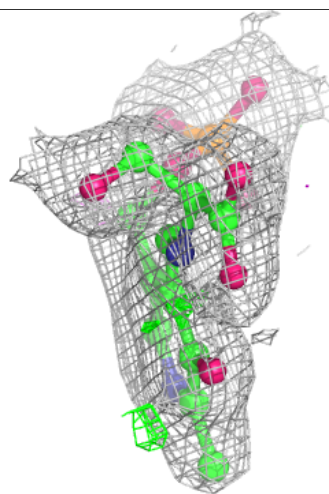
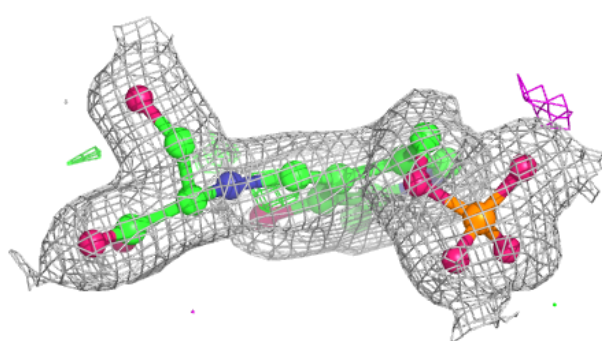
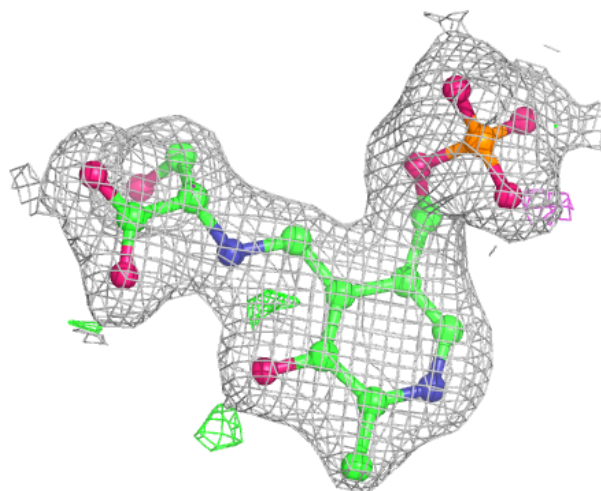
Electron density around PLS B 401:

$2mF_o-DF_c$ (at 0.7 rmsd) in gray
 mF_o-DF_c (at 3 rmsd) in purple (negative)
and green (positive)



Electron density around PLS C 401:

$2mF_o-DF_c$ (at 0.7 rmsd) in gray
 mF_o-DF_c (at 3 rmsd) in purple (negative)
and green (positive)



6.5 Other polymers [i](#)

There are no such residues in this entry.