



Full wwPDB X-ray Structure Validation Report ⓘ

Sep 5, 2023 – 05:00 PM EDT

PDB ID : 4E0F
Title : Crystallographic structure of trimeric Riboflavin Synthase from *Brucella abortus* in complex with riboflavin
Authors : Serer, M.I.; Bonomi, H.R.; Guimaraes, B.G.; Rossi, R.C.; Goldbaum, F.A.; Klinke, S.
Deposited on : 2012-03-03
Resolution : 2.85 Å(reported)

This is a Full wwPDB X-ray Structure Validation Report for a publicly released PDB entry.

We welcome your comments at validation@mail.wwpdb.org

A user guide is available at

<https://www.wwpdb.org/validation/2017/XrayValidationReportHelp>

with specific help available everywhere you see the ⓘ symbol.

The types of validation reports are described at

<http://www.wwpdb.org/validation/2017/FAQs#types>.

The following versions of software and data (see [references ⓘ](#)) were used in the production of this report:

MolProbity : 4.02b-467
Mogul : 1.8.5 (274361), CSD as541be (2020)
Xtriage (Phenix) : 1.13
EDS : 2.35
buster-report : 1.1.7 (2018)
Percentile statistics : 20191225.v01 (using entries in the PDB archive December 25th 2019)
Refmac : 5.8.0158
CCP4 : 7.0.044 (Gargrove)
Ideal geometry (proteins) : Engh & Huber (2001)
Ideal geometry (DNA, RNA) : Parkinson et al. (1996)
Validation Pipeline (wwPDB-VP) : 2.35

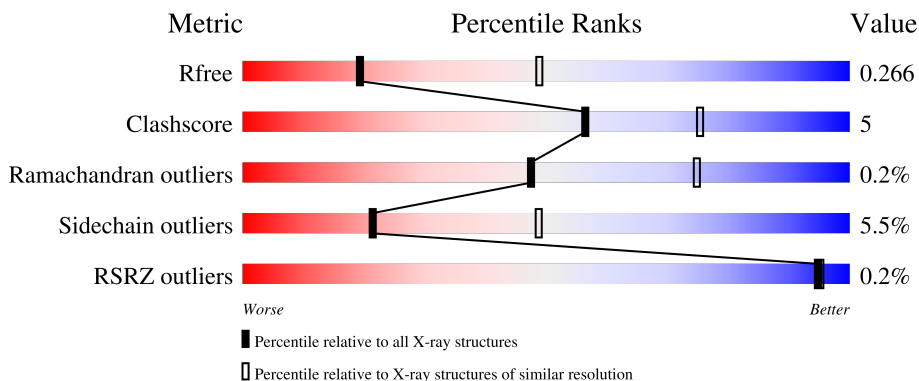
1 Overall quality at a glance

The following experimental techniques were used to determine the structure:

X-RAY DIFFRACTION

The reported resolution of this entry is 2.85 Å.

Percentile scores (ranging between 0-100) for global validation metrics of the entry are shown in the following graphic. The table shows the number of entries on which the scores are based.



Metric	Whole archive (#Entries)	Similar resolution (#Entries, resolution range(Å))
R_{free}	130704	3168 (2.90-2.82)
Clashscore	141614	3438 (2.90-2.82)
Ramachandran outliers	138981	3348 (2.90-2.82)
Sidechain outliers	138945	3351 (2.90-2.82)
RSRZ outliers	127900	3103 (2.90-2.82)

The table below summarises the geometric issues observed across the polymeric chains and their fit to the electron density. The red, orange, yellow and green segments of the lower bar indicate the fraction of residues that contain outliers for ≥ 3 , 2, 1 and 0 types of geometric quality criteria respectively. A grey segment represents the fraction of residues that are not modelled. The numeric value for each fraction is indicated below the corresponding segment, with a dot representing fractions $\leq 5\%$. The upper red bar (where present) indicates the fraction of residues that have poor fit to the electron density. The numeric value is given above the bar.

Mol	Chain	Length	Quality of chain
1	A	210	
1	B	210	
1	C	210	

2 Entry composition

There are 3 unique types of molecules in this entry. The entry contains 4690 atoms, of which 0 are hydrogens and 0 are deuteriums.

In the tables below, the ZeroOcc column contains the number of atoms modelled with zero occupancy, the AltConf column contains the number of residues with at least one atom in alternate conformation and the Trace column contains the number of residues modelled with at most 2 atoms.

- Molecule 1 is a protein called Riboflavin synthase subunit alpha.

Mol	Chain	Residues	Atoms					ZeroOcc	AltConf	Trace
			Total	C	N	O	S			
1	A	200	1542	972	269	297	4	0	1	0
1	B	203	1535	967	268	296	4	0	0	0
1	C	202	1520	959	263	294	4	0	0	0

There are 24 discrepancies between the modelled and reference sequences:

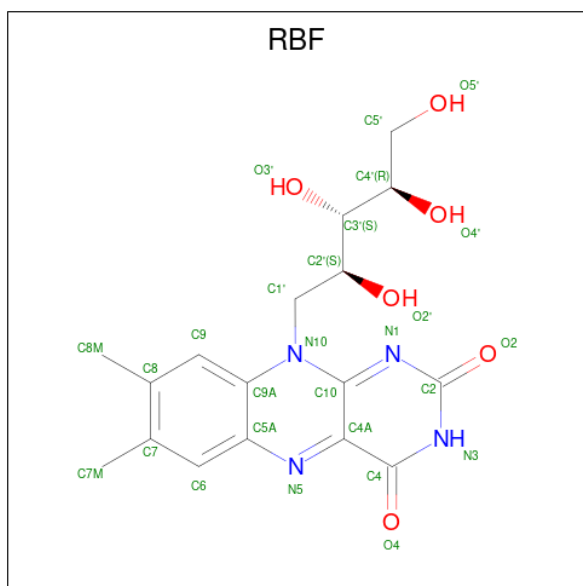
Chain	Residue	Modelled	Actual	Comment	Reference
A	203	LEU	-	expression tag	UNP G8SX20
A	204	GLU	-	expression tag	UNP G8SX20
A	205	HIS	-	expression tag	UNP G8SX20
A	206	HIS	-	expression tag	UNP G8SX20
A	207	HIS	-	expression tag	UNP G8SX20
A	208	HIS	-	expression tag	UNP G8SX20
A	209	HIS	-	expression tag	UNP G8SX20
A	210	HIS	-	expression tag	UNP G8SX20
B	203	LEU	-	expression tag	UNP G8SX20
B	204	GLU	-	expression tag	UNP G8SX20
B	205	HIS	-	expression tag	UNP G8SX20
B	206	HIS	-	expression tag	UNP G8SX20
B	207	HIS	-	expression tag	UNP G8SX20
B	208	HIS	-	expression tag	UNP G8SX20
B	209	HIS	-	expression tag	UNP G8SX20
B	210	HIS	-	expression tag	UNP G8SX20
C	203	LEU	-	expression tag	UNP G8SX20
C	204	GLU	-	expression tag	UNP G8SX20
C	205	HIS	-	expression tag	UNP G8SX20
C	206	HIS	-	expression tag	UNP G8SX20
C	207	HIS	-	expression tag	UNP G8SX20
C	208	HIS	-	expression tag	UNP G8SX20
C	209	HIS	-	expression tag	UNP G8SX20

Continued on next page...

Continued from previous page...

Chain	Residue	Modelled	Actual	Comment	Reference
C	210	HIS	-	expression tag	UNP G8SX20

- Molecule 2 is RIBOFLAVIN (three-letter code: RBF) (formula: C₁₇H₂₀N₄O₆).



Mol	Chain	Residues	Atoms			ZeroOcc	AltConf	
			Total	C	N			O
2	A	1	27	17	4	6	0	0

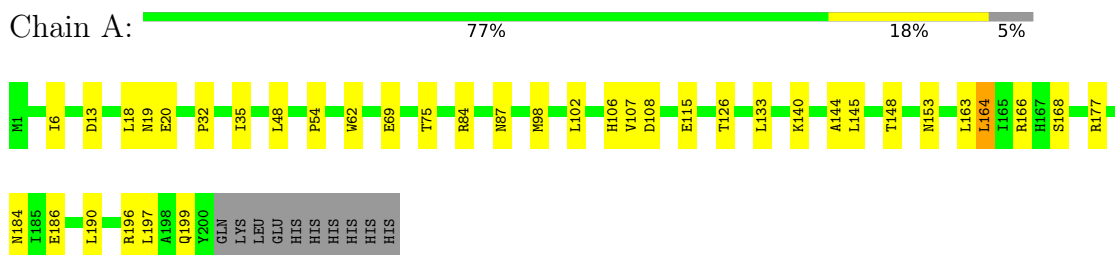
- Molecule 3 is water.

Mol	Chain	Residues	Atoms		ZeroOcc	AltConf
3	A	27	Total	O	0	0
			27	27		
3	B	19	Total	O	0	0
			19	19		
3	C	20	Total	O	0	0
			20	20		

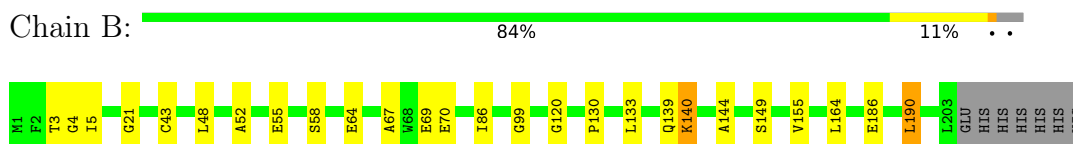
3 Residue-property plots

These plots are drawn for all protein, RNA, DNA and oligosaccharide chains in the entry. The first graphic for a chain summarises the proportions of the various outlier classes displayed in the second graphic. The second graphic shows the sequence view annotated by issues in geometry and electron density. Residues are color-coded according to the number of geometric quality criteria for which they contain at least one outlier: green = 0, yellow = 1, orange = 2 and red = 3 or more. A red dot above a residue indicates a poor fit to the electron density ($RSRZ > 2$). Stretches of 2 or more consecutive residues without any outlier are shown as a green connector. Residues present in the sample, but not in the model, are shown in grey.

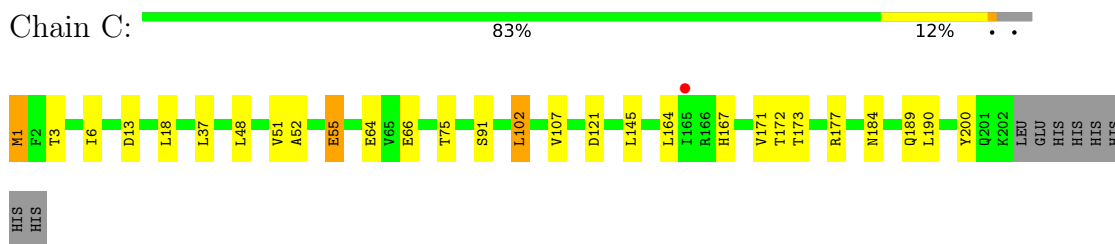
- Molecule 1: Riboflavin synthase subunit alpha



- Molecule 1: Riboflavin synthase subunit alpha



- Molecule 1: Riboflavin synthase subunit alpha



4 Data and refinement statistics

Property	Value	Source
Space group	P 21 21 21	Depositor
Cell constants a, b, c, α , β , γ	69.98Å 91.82Å 98.77Å 90.00° 90.00° 90.00°	Depositor
Resolution (Å)	67.25 – 2.85 48.49 – 2.85	Depositor EDS
% Data completeness (in resolution range)	98.1 (67.25-2.85) 98.1 (48.49-2.85)	Depositor EDS
R_{merge}	0.12	Depositor
R_{sym}	0.12	Depositor
$\langle I/\sigma(I) \rangle$ ¹	5.04 (at 2.86Å)	Xtrriage
Refinement program	REFMAC 5.5.0109	Depositor
R, R_{free}	0.216 , 0.267 0.213 , 0.266	Depositor DCC
R_{free} test set	752 reflections (4.97%)	wwPDB-VP
Wilson B-factor (Å ²)	31.7	Xtrriage
Anisotropy	0.281	Xtrriage
Bulk solvent k_{sol} (e/Å ³), B_{sol} (Å ²)	0.37 , 38.5	EDS
L-test for twinning ²	$\langle L \rangle = 0.47$, $\langle L^2 \rangle = 0.30$	Xtrriage
Estimated twinning fraction	No twinning to report.	Xtrriage
F_o, F_c correlation	0.90	EDS
Total number of atoms	4690	wwPDB-VP
Average B, all atoms (Å ²)	22.0	wwPDB-VP

Xtrriage's analysis on translational NCS is as follows: *The largest off-origin peak in the Patterson function is 4.66% of the height of the origin peak. No significant pseudotranslation is detected.*

¹Intensities estimated from amplitudes.

²Theoretical values of $\langle |L| \rangle$, $\langle L^2 \rangle$ for acentric reflections are 0.5, 0.333 respectively for untwinned datasets, and 0.375, 0.2 for perfectly twinned datasets.

5 Model quality

5.1 Standard geometry

Bond lengths and bond angles in the following residue types are not validated in this section: RBF

The Z score for a bond length (or angle) is the number of standard deviations the observed value is removed from the expected value. A bond length (or angle) with $|Z| > 5$ is considered an outlier worth inspection. RMSZ is the root-mean-square of all Z scores of the bond lengths (or angles).

Mol	Chain	Bond lengths		Bond angles	
		RMSZ	# Z >5	RMSZ	# Z >5
1	A	0.33	0/1570	0.51	0/2128
1	B	0.32	0/1559	0.50	0/2117
1	C	0.33	0/1544	0.50	0/2098
All	All	0.32	0/4673	0.50	0/6343

There are no bond length outliers.

There are no bond angle outliers.

There are no chirality outliers.

There are no planarity outliers.

5.2 Too-close contacts

In the following table, the Non-H and H(model) columns list the number of non-hydrogen atoms and hydrogen atoms in the chain respectively. The H(added) column lists the number of hydrogen atoms added and optimized by MolProbity. The Clashes column lists the number of clashes within the asymmetric unit, whereas Symm-Clashes lists symmetry-related clashes.

Mol	Chain	Non-H	H(model)	H(added)	Clashes	Symm-Clashes
1	A	1542	0	1535	19	0
1	B	1535	0	1510	15	0
1	C	1520	0	1491	16	0
2	A	27	0	20	3	0
3	A	27	0	0	1	0
3	B	19	0	0	0	0
3	C	20	0	0	1	0
All	All	4690	0	4556	46	0

The all-atom clashscore is defined as the number of clashes found per 1000 atoms (including hydrogen atoms). The all-atom clashscore for this structure is 5.

All (46) close contacts within the same asymmetric unit are listed below, sorted by their clash magnitude.

Atom-1	Atom-2	Interatomic distance (Å)	Clash overlap (Å)
1:C:75:THR:HG22	1:C:107:VAL:CG2	2.11	0.80
1:C:75:THR:HG22	1:C:107:VAL:HG21	1.64	0.79
1:B:139:GLN:HG3	1:B:155:VAL:HG12	1.75	0.68
1:A:140:LYS:O	1:C:200:TYR:HE2	1.80	0.64
1:C:1:MET:HG3	1:C:102:LEU:HD21	1.82	0.60
1:B:21:GLY:HA3	1:B:67:ALA:O	2.03	0.57
1:A:190:LEU:HD13	1:B:190:LEU:HD22	1.87	0.56
1:A:75:THR:HG22	1:A:107:VAL:CG2	2.35	0.56
1:B:130:PRO:HG2	1:B:133:LEU:HD13	1.92	0.52
1:B:144:ALA:HB3	1:B:186:GLU:HB3	1.92	0.52
1:B:43:CYS:HB3	1:B:86:ILE:HD12	1.93	0.49
1:B:52:ALA:HB3	1:B:64:GLU:HB2	1.95	0.48
1:A:106:HIS:CE1	2:A:301:RBF:HC81	2.48	0.48
1:C:51:VAL:HG21	1:C:66:GLU:HG3	1.96	0.47
1:A:106:HIS:HE1	2:A:301:RBF:HC81	1.80	0.47
1:A:164:LEU:HD23	1:A:168:SER:HB3	1.98	0.46
1:A:20:GLU:HB2	1:B:120:GLY:HA3	1.97	0.46
1:B:69:GLU:HG3	1:B:70:GLU:H	1.81	0.46
1:B:4:GLY:HA3	1:B:149:SER:HB3	1.97	0.46
1:A:108:ASP:HB2	1:A:133:LEU:HD21	1.98	0.45
1:A:75:THR:HG22	1:A:107:VAL:HG21	1.98	0.45
1:A:115:GLU:HB3	1:A:126:THR:HB	1.99	0.45
1:A:145:LEU:HA	1:A:184:ASN:O	2.17	0.45
1:A:196:ARG:O	1:A:199:GLN:HG2	2.17	0.44
1:C:75:THR:HG22	1:C:107:VAL:HG22	1.92	0.44
1:A:84:ARG:HD2	3:A:408:HOH:O	2.17	0.44
1:C:55:GLU:H	1:C:55:GLU:HG2	1.60	0.44
1:C:52:ALA:HB3	1:C:64:GLU:HB2	2.00	0.44
1:A:98:MET:HB3	1:A:102:LEU:HD21	1.99	0.43
1:B:190:LEU:HG	1:C:190:LEU:HD22	2.00	0.43
1:C:107:VAL:HG11	1:C:184:ASN:HB3	2.00	0.43
1:B:5:ILE:CD1	1:B:99:GLY:HA3	2.49	0.43
1:A:177:ARG:HD3	1:A:177:ARG:HA	1.93	0.42
1:C:6:ILE:HB	1:C:172:THR:HG22	2.01	0.42
1:C:173:THR:HB	1:C:177:ARG:HH21	1.85	0.42
1:C:145:LEU:HA	1:C:184:ASN:O	2.20	0.41
1:A:54:PRO:HD3	1:A:62:TRP:O	2.21	0.41
1:B:55:GLU:OE1	1:B:55:GLU:N	2.53	0.41
1:C:102:LEU:HD12	1:C:189:GLN:NE2	2.36	0.41
1:C:55:GLU:HG2	3:C:315:HOH:O	2.21	0.41

Continued on next page...

Continued from previous page...

Atom-1	Atom-2	Interatomic distance (Å)	Clash overlap (Å)
2:A:301:RBF:O5'	1:B:140:LYS:NZ	2.54	0.41
1:A:32:PRO:HA	1:A:35:ILE:HD12	2.01	0.41
1:B:55:GLU:O	1:B:58:SER:HB3	2.20	0.41
1:A:144:ALA:HB3	1:A:186:GLU:HB3	2.02	0.41
1:A:6:ILE:HG12	1:A:87:ASN:HB3	2.03	0.40
1:C:167:HIS:O	1:C:171:VAL:HG22	2.22	0.40

There are no symmetry-related clashes.

5.3 Torsion angles [i](#)

5.3.1 Protein backbone [i](#)

In the following table, the Percentiles column shows the percent Ramachandran outliers of the chain as a percentile score with respect to all X-ray entries followed by that with respect to entries of similar resolution.

The Analysed column shows the number of residues for which the backbone conformation was analysed, and the total number of residues.

Mol	Chain	Analysed	Favoured	Allowed	Outliers	Percentiles	
1	A	199/210 (95%)	188 (94%)	10 (5%)	1 (0%)	29	57
1	B	201/210 (96%)	194 (96%)	7 (4%)	0	100	100
1	C	200/210 (95%)	195 (98%)	5 (2%)	0	100	100
All	All	600/630 (95%)	577 (96%)	22 (4%)	1 (0%)	47	75

All (1) Ramachandran outliers are listed below:

Mol	Chain	Res	Type
1	A	153	ASN

5.3.2 Protein sidechains [i](#)

In the following table, the Percentiles column shows the percent sidechain outliers of the chain as a percentile score with respect to all X-ray entries followed by that with respect to entries of similar resolution.

The Analysed column shows the number of residues for which the sidechain conformation was analysed, and the total number of residues.

Mol	Chain	Analysed	Rotameric	Outliers	Percentiles	
1	A	161/173 (93%)	151 (94%)	10 (6%)	18	43
1	B	157/173 (91%)	152 (97%)	5 (3%)	39	69
1	C	155/173 (90%)	144 (93%)	11 (7%)	14	36
All	All	473/519 (91%)	447 (94%)	26 (6%)	21	49

All (26) residues with a non-rotameric sidechain are listed below:

Mol	Chain	Res	Type
1	A	13	ASP
1	A	18	LEU
1	A	19	ASN
1	A	48	LEU
1	A	69	GLU
1	A	148	THR
1	A	163	LEU
1	A	164	LEU
1	A	166	ARG
1	A	197	LEU
1	B	3	THR
1	B	48	LEU
1	B	140	LYS
1	B	164	LEU
1	B	190	LEU
1	C	1	MET
1	C	3	THR
1	C	13	ASP
1	C	18	LEU
1	C	37	LEU
1	C	48	LEU
1	C	55	GLU
1	C	91	SER
1	C	102	LEU
1	C	121	ASP
1	C	164	LEU

Sometimes sidechains can be flipped to improve hydrogen bonding and reduce clashes. All (4) such sidechains are listed below:

Mol	Chain	Res	Type
1	A	19	ASN
1	B	19	ASN
1	B	153	ASN

Continued on next page...

Continued from previous page...

Mol	Chain	Res	Type
1	B	189	GLN

5.3.3 RNA [i](#)

There are no RNA molecules in this entry.

5.4 Non-standard residues in protein, DNA, RNA chains [i](#)

There are no non-standard protein/DNA/RNA residues in this entry.

5.5 Carbohydrates [i](#)

There are no monosaccharides in this entry.

5.6 Ligand geometry [i](#)

1 ligand is modelled in this entry.

In the following table, the Counts columns list the number of bonds (or angles) for which Mogul statistics could be retrieved, the number of bonds (or angles) that are observed in the model and the number of bonds (or angles) that are defined in the Chemical Component Dictionary. The Link column lists molecule types, if any, to which the group is linked. The Z score for a bond length (or angle) is the number of standard deviations the observed value is removed from the expected value. A bond length (or angle) with $|Z| > 2$ is considered an outlier worth inspection. RMSZ is the root-mean-square of all Z scores of the bond lengths (or angles).

Mol	Type	Chain	Res	Link	Bond lengths			Bond angles		
					Counts	RMSZ	# Z > 2	Counts	RMSZ	# Z > 2
2	RBF	A	301	-	29,29,29	1.58	4 (13%)	41,43,43	1.21	6 (14%)

In the following table, the Chirals column lists the number of chiral outliers, the number of chiral centers analysed, the number of these observed in the model and the number defined in the Chemical Component Dictionary. Similar counts are reported in the Torsion and Rings columns. '-' means no outliers of that kind were identified.

Mol	Type	Chain	Res	Link	Chirals	Torsions	Rings
2	RBF	A	301	-	-	0/14/14/14	0/3/3/3

All (4) bond length outliers are listed below:

Mol	Chain	Res	Type	Atoms	Z	Observed(Å)	Ideal(Å)
2	A	301	RBF	C9A-C5A	5.46	1.50	1.41
2	A	301	RBF	C8-C7	3.60	1.49	1.40
2	A	301	RBF	C4A-N5	2.51	1.35	1.30
2	A	301	RBF	C4-N3	-2.18	1.34	1.38

All (6) bond angle outliers are listed below:

Mol	Chain	Res	Type	Atoms	Z	Observed(°)	Ideal(°)
2	A	301	RBF	C4-C4A-N5	2.69	122.06	118.23
2	A	301	RBF	C4A-C10-N1	-2.69	118.50	124.73
2	A	301	RBF	C10-N1-C2	2.32	121.53	116.90
2	A	301	RBF	O4-C4-C4A	-2.15	120.90	126.60
2	A	301	RBF	O2-C2-N1	-2.14	118.28	121.83
2	A	301	RBF	C4A-C10-N10	2.13	119.60	116.48

There are no chirality outliers.

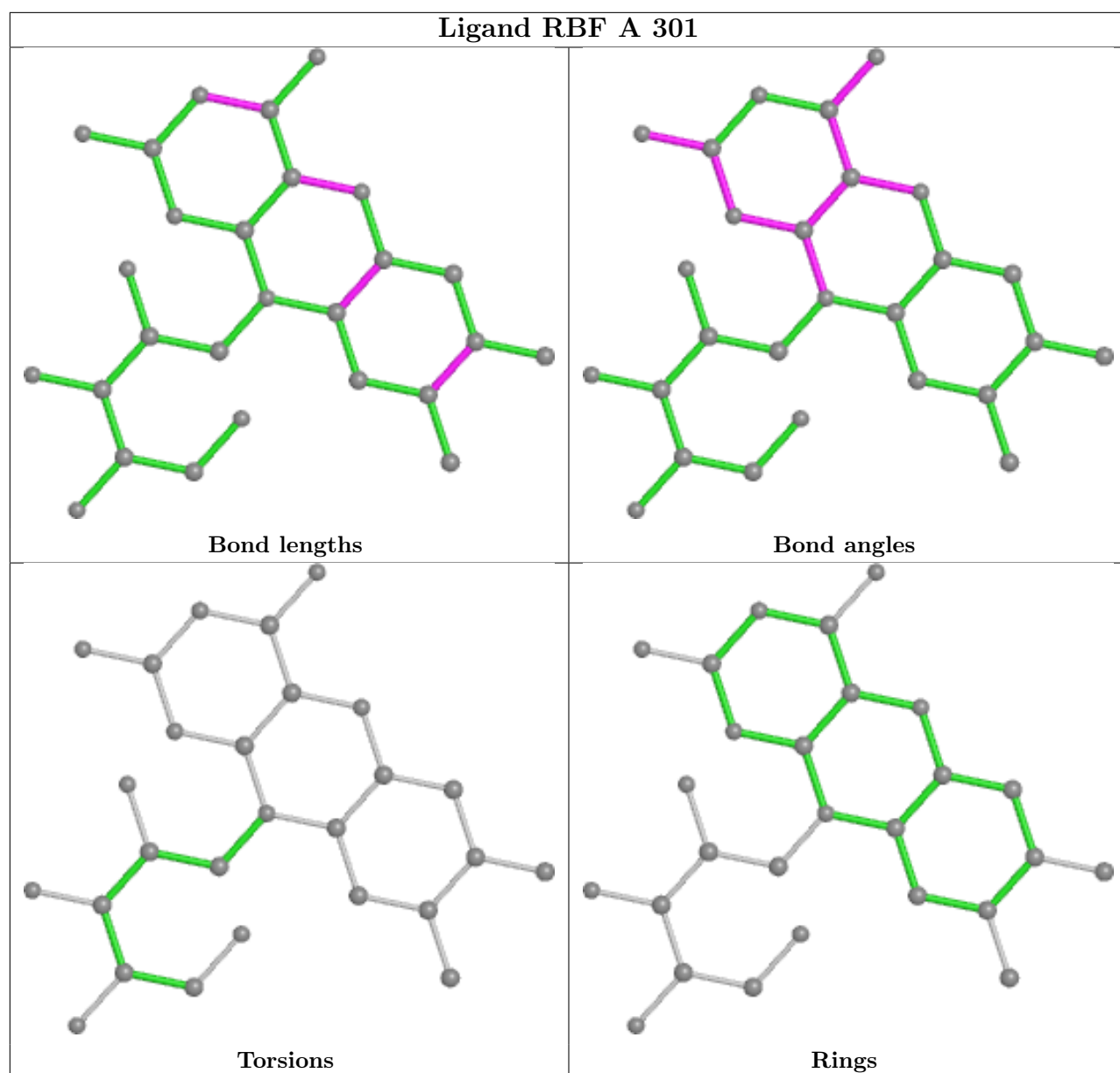
There are no torsion outliers.

There are no ring outliers.

1 monomer is involved in 3 short contacts:

Mol	Chain	Res	Type	Clashes	Symm-Clashes
2	A	301	RBF	3	0

The following is a two-dimensional graphical depiction of Mogul quality analysis of bond lengths, bond angles, torsion angles, and ring geometry for all instances of the Ligand of Interest. In addition, ligands with molecular weight > 250 and outliers as shown on the validation Tables will also be included. For torsion angles, if less than 5% of the Mogul distribution of torsion angles is within 10 degrees of the torsion angle in question, then that torsion angle is considered an outlier. Any bond that is central to one or more torsion angles identified as an outlier by Mogul will be highlighted in the graph. For rings, the root-mean-square deviation (RMSD) between the ring in question and similar rings identified by Mogul is calculated over all ring torsion angles. If the average RMSD is greater than 60 degrees and the minimal RMSD between the ring in question and any Mogul-identified rings is also greater than 60 degrees, then that ring is considered an outlier. The outliers are highlighted in purple. The color gray indicates Mogul did not find sufficient equivalents in the CSD to analyse the geometry.



5.7 Other polymers [i](#)

There are no such residues in this entry.

5.8 Polymer linkage issues [i](#)

There are no chain breaks in this entry.

6 Fit of model and data [i](#)

6.1 Protein, DNA and RNA chains [i](#)

In the following table, the column labelled ‘#RSRZ> 2’ contains the number (and percentage) of RSRZ outliers, followed by percent RSRZ outliers for the chain as percentile scores relative to all X-ray entries and entries of similar resolution. The OWAB column contains the minimum, median, 95th percentile and maximum values of the occupancy-weighted average B-factor per residue. The column labelled ‘Q< 0.9’ lists the number of (and percentage) of residues with an average occupancy less than 0.9.

Mol	Chain	Analysed	<RSRZ>	#RSRZ>2	OWAB(Å ²)	Q<0.9
1	A	200/210 (95%)	-0.26	0 100 100	9, 20, 26, 30	0
1	B	203/210 (96%)	-0.10	0 100 100	13, 22, 32, 35	0
1	C	202/210 (96%)	-0.01	1 (0%) 91 90	15, 25, 34, 40	0
All	All	605/630 (96%)	-0.13	1 (0%) 95 95	9, 22, 32, 40	0

All (1) RSRZ outliers are listed below:

Mol	Chain	Res	Type	RSRZ
1	C	165	ILE	2.0

6.2 Non-standard residues in protein, DNA, RNA chains [i](#)

There are no non-standard protein/DNA/RNA residues in this entry.

6.3 Carbohydrates [i](#)

There are no monosaccharides in this entry.

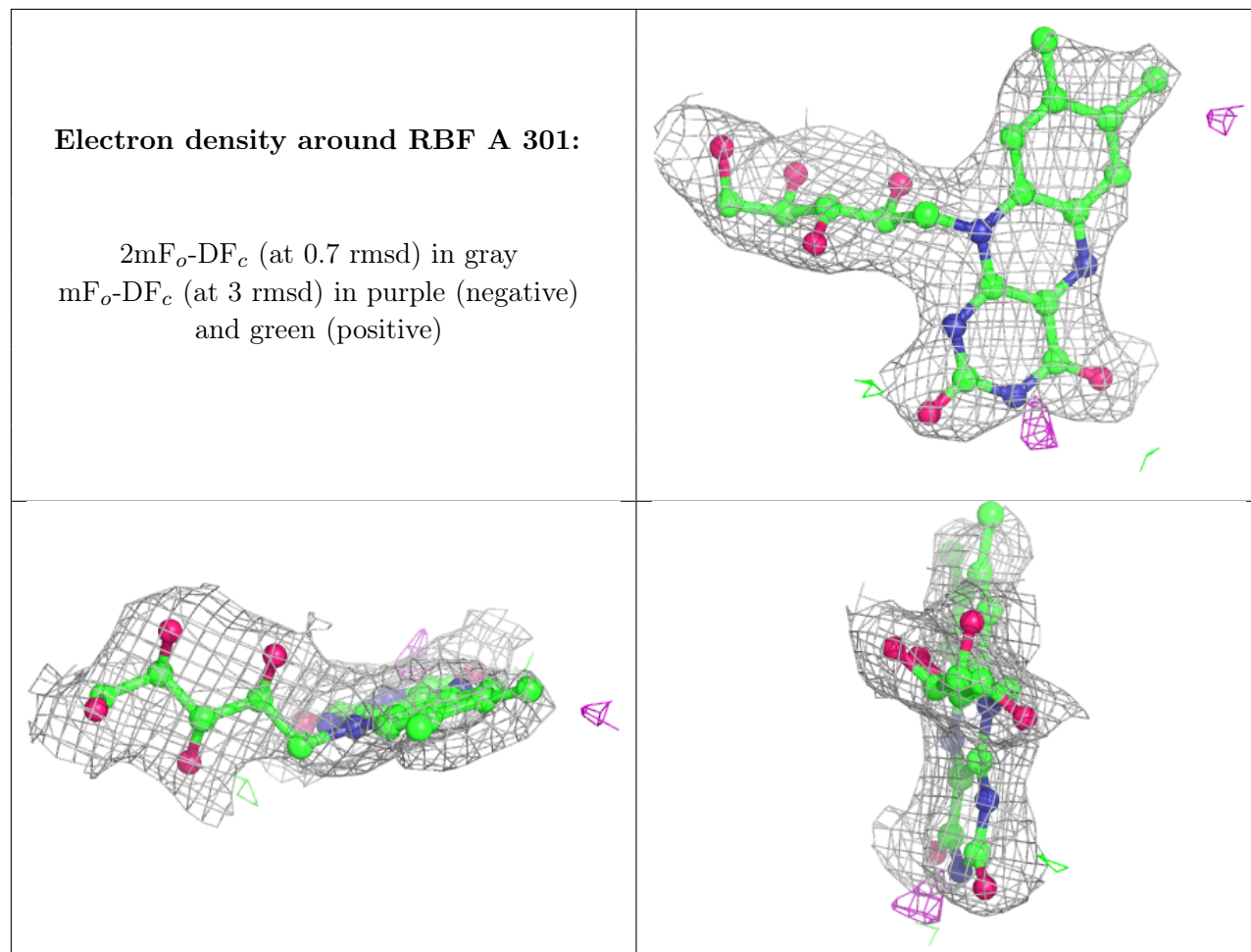
6.4 Ligands [i](#)

In the following table, the Atoms column lists the number of modelled atoms in the group and the number defined in the chemical component dictionary. The B-factors column lists the minimum, median, 95th percentile and maximum values of B factors of atoms in the group. The column labelled ‘Q< 0.9’ lists the number of atoms with occupancy less than 0.9.

Mol	Type	Chain	Res	Atoms	RSCC	RSR	B-factors(Å ²)	Q<0.9
2	RBF	A	301	27/27	0.92	0.18	28,30,31,31	0

The following is a graphical depiction of the model fit to experimental electron density of all

instances of the Ligand of Interest. In addition, ligands with molecular weight > 250 and outliers as shown on the geometry validation Tables will also be included. Each fit is shown from different orientation to approximate a three-dimensional view.



6.5 Other polymers [\(i\)](#)

There are no such residues in this entry.