



Full wwPDB X-ray Structure Validation Report ⓘ

Sep 18, 2023 – 08:06 PM EDT

PDB ID : 5E02
Title : Structure of RNA Helicase FRH a Critical Component of the Neurospora Crassa Circadian Clock
Authors : Conrad, K.S.; Crane, B.C.
Deposited on : 2015-09-28
Resolution : 3.80 Å(reported)

This is a Full wwPDB X-ray Structure Validation Report for a publicly released PDB entry.

We welcome your comments at validation@mail.wwpdb.org

A user guide is available at

<https://www.wwpdb.org/validation/2017/XrayValidationReportHelp>

with specific help available everywhere you see the ⓘ symbol.

The types of validation reports are described at

<http://www.wwpdb.org/validation/2017/FAQs#types>.

The following versions of software and data (see [references ⓘ](#)) were used in the production of this report:

MolProbity : 4.02b-467
Mogul : 1.8.5 (274361), CSD as541be (2020)
Xtriage (Phenix) : 1.13
EDS : 2.35.1
buster-report : 1.1.7 (2018)
Percentile statistics : 20191225.v01 (using entries in the PDB archive December 25th 2019)
Refmac : 5.8.0158
CCP4 : 7.0.044 (Gargrove)
Ideal geometry (proteins) : Engh & Huber (2001)
Ideal geometry (DNA, RNA) : Parkinson et al. (1996)
Validation Pipeline (wwPDB-VP) : 2.35.1

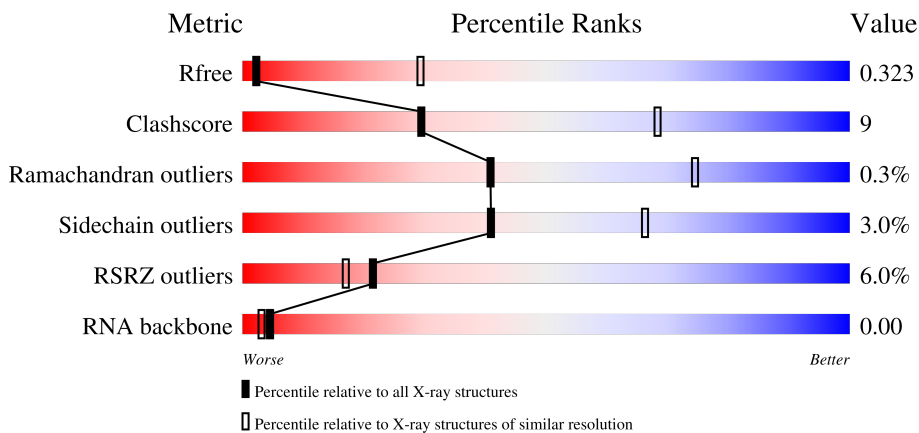
1 Overall quality at a glance

The following experimental techniques were used to determine the structure:

X-RAY DIFFRACTION

The reported resolution of this entry is 3.80 Å.

Percentile scores (ranging between 0-100) for global validation metrics of the entry are shown in the following graphic. The table shows the number of entries on which the scores are based.



Metric	Whole archive (#Entries)	Similar resolution (#Entries, resolution range(Å))
R_{free}	130704	1212 (4.00-3.60)
Clashscore	141614	1288 (4.00-3.60)
Ramachandran outliers	138981	1243 (4.00-3.60)
Sidechain outliers	138945	1237 (4.00-3.60)
RSRZ outliers	127900	1121 (4.00-3.60)
RNA backbone	3102	1036 (4.60-3.00)

The table below summarises the geometric issues observed across the polymeric chains and their fit to the electron density. The red, orange, yellow and green segments of the lower bar indicate the fraction of residues that contain outliers for ≥ 3 , 2, 1 and 0 types of geometric quality criteria respectively. A grey segment represents the fraction of residues that are not modelled. The numeric value for each fraction is indicated below the corresponding segment, with a dot representing fractions $\leq 5\%$. The upper red bar (where present) indicates the fraction of residues that have poor fit to the electron density. The numeric value is given above the bar.

Mol	Chain	Length	Quality of chain
1	A	1106	
2	C	4	

The following table lists non-polymeric compounds, carbohydrate monomers and non-standard residues in protein, DNA, RNA chains that are outliers for geometric or electron-density-fit crite-

ria:

Mol	Type	Chain	Res	Chirality	Geometry	Clashes	Electron density
3	ADP	A	1201	-	-	-	X

2 Entry composition [i](#)

There are 3 unique types of molecules in this entry. The entry contains 7800 atoms, of which 0 are hydrogens and 0 are deuteriums.

In the tables below, the ZeroOcc column contains the number of atoms modelled with zero occupancy, the AltConf column contains the number of residues with at least one atom in alternate conformation and the Trace column contains the number of residues modelled with at most 2 atoms.

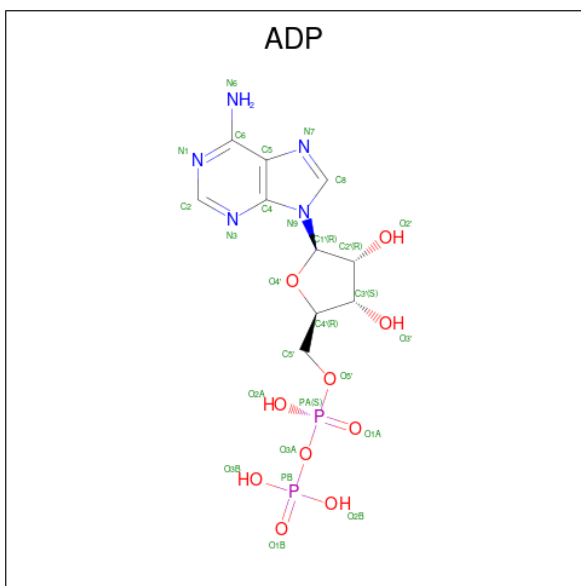
- Molecule 1 is a protein called FRQ-interacting RNA helicase.

Mol	Chain	Residues	Atoms					ZeroOcc	AltConf	Trace
			Total	C	N	O	S			
1	A	964	7688	4899	1321	1426	42	0	0	0

- Molecule 2 is a RNA chain called RNA (5'-R(*AP*AP*AP*A)-3').


Mol	Chain	Residues	Atoms					ZeroOcc	AltConf	Trace
			Total	C	N	O	P			
2	C	4	85	40	20	22	3	0	0	0

- Molecule 3 is ADENOSINE-5'-DIPHOSPHATE (three-letter code: ADP) (formula: C₁₀H₁₅N₅O₁₀P₂).



Mol	Chain	Residues	Atoms					ZeroOcc	AltConf
			Total	C	N	O	P		
3	A	1	27	10	5	10	2	0	0

- Molecule 2: RNA (5'-R(*AP*AP*AP*A)-3')

Chain C:  75% 75% 25%



4 Data and refinement statistics

Property	Value	Source
Space group	P 21 21 21	Depositor
Cell constants a, b, c, α , β , γ	76.43Å 106.60Å 125.30Å 90.00° 90.00° 90.00°	Depositor
Resolution (Å)	81.19 – 3.80 81.19 – 3.80	Depositor EDS
% Data completeness (in resolution range)	91.6 (81.19-3.80) 77.4 (81.19-3.80)	Depositor EDS
R_{merge}	0.15	Depositor
R_{sym}	(Not available)	Depositor
$\langle I/\sigma(I) \rangle$ ¹	1.11 (at 3.78Å)	Xtrriage
Refinement program	PHENIX (phenix.refine: 1.9_1692)	Depositor
R, R_{free}	0.278 , 0.321 0.280 , 0.323	Depositor DCC
R_{free} test set	968 reflections (10.01%)	wwPDB-VP
Wilson B-factor (Å ²)	118.9	Xtrriage
Anisotropy	0.555	Xtrriage
Bulk solvent k_{sol} (e/Å ³), B_{sol} (Å ²)	0.33 , 99.3	EDS
L-test for twinning ²	$\langle L \rangle = 0.47$, $\langle L^2 \rangle = 0.30$	Xtrriage
Estimated twinning fraction	No twinning to report.	Xtrriage
F_o, F_c correlation	0.89	EDS
Total number of atoms	7800	wwPDB-VP
Average B, all atoms (Å ²)	145.0	wwPDB-VP

Xtrriage's analysis on translational NCS is as follows: *The largest off-origin peak in the Patterson function is 4.60% of the height of the origin peak. No significant pseudotranslation is detected.*

¹Intensities estimated from amplitudes.

²Theoretical values of $\langle |L| \rangle$, $\langle L^2 \rangle$ for acentric reflections are 0.5, 0.333 respectively for untwinned datasets, and 0.375, 0.2 for perfectly twinned datasets.

5 Model quality [i](#)

5.1 Standard geometry [i](#)

Bond lengths and bond angles in the following residue types are not validated in this section: ADP

The Z score for a bond length (or angle) is the number of standard deviations the observed value is removed from the expected value. A bond length (or angle) with $|Z| > 5$ is considered an outlier worth inspection. RMSZ is the root-mean-square of all Z scores of the bond lengths (or angles).

Mol	Chain	Bond lengths		Bond angles	
		RMSZ	# Z >5	RMSZ	# Z >5
1	A	0.24	0/7835	0.46	1/10582 (0.0%)
2	C	0.86	0/96	1.87	6/148 (4.1%)
All	All	0.26	0/7931	0.51	7/10730 (0.1%)

Chiral center outliers are detected by calculating the chiral volume of a chiral center and verifying if the center is modelled as a planar moiety or with the opposite hand. A planarity outlier is detected by checking planarity of atoms in a peptide group, atoms in a mainchain group or atoms of a sidechain that are expected to be planar.

Mol	Chain	#Chirality outliers	#Planarity outliers
1	A	0	3

There are no bond length outliers.

All (7) bond angle outliers are listed below:

Mol	Chain	Res	Type	Atoms	Z	Observed(°)	Ideal(°)
2	C	1	A	N9-C4-C5	6.44	108.37	105.80
2	C	4	A	N7-C8-N9	5.77	116.69	113.80
2	C	4	A	C4-C5-C6	5.52	119.76	117.00
2	C	4	A	C6-C5-N7	-5.33	128.57	132.30
1	A	1063	ARG	NE-CZ-NH1	5.23	122.91	120.30
2	C	4	A	N1-C2-N3	5.14	131.87	129.30
2	C	4	A	C8-N9-C4	-5.08	103.77	105.80

There are no chirality outliers.

All (3) planarity outliers are listed below:

Mol	Chain	Res	Type	Group
1	A	557	LYS	Peptide

Continued on next page...

Continued from previous page...

Mol	Chain	Res	Type	Group
1	A	559	ASP	Peptide
1	A	764	ASN	Peptide

5.2 Too-close contacts [i](#)

In the following table, the Non-H and H(model) columns list the number of non-hydrogen atoms and hydrogen atoms in the chain respectively. The H(added) column lists the number of hydrogen atoms added and optimized by MolProbity. The Clashes column lists the number of clashes within the asymmetric unit, whereas Symm-Clashes lists symmetry-related clashes.

Mol	Chain	Non-H	H(model)	H(added)	Clashes	Symm-Clashes
1	A	7688	0	7768	142	0
2	C	85	0	46	18	0
3	A	27	0	12	4	0
All	All	7800	0	7826	148	0

The all-atom clashscore is defined as the number of clashes found per 1000 atoms (including hydrogen atoms). The all-atom clashscore for this structure is 9.

All (148) close contacts within the same asymmetric unit are listed below, sorted by their clash magnitude.

Atom-1	Atom-2	Interatomic distance (Å)	Clash overlap (Å)
1:A:447:ASN:HD21	1:A:452:GLU:HG3	1.38	0.88
1:A:372:ILE:HG22	1:A:373:VAL:HG23	1.68	0.75
1:A:450:LYS:HG3	2:C:2:A:H5''	1.73	0.70
1:A:764:ASN:O	1:A:766:LYS:N	2.26	0.68
1:A:278:TYR:O	1:A:629:ARG:NH1	2.27	0.68
1:A:557:LYS:HE3	1:A:564:ARG:HE	1.60	0.67
1:A:983:ILE:HG12	1:A:1052:VAL:HG22	1.75	0.67
1:A:428:ILE:HD13	1:A:456:MET:HB3	1.78	0.66
1:A:717:LYS:HB3	1:A:800:ARG:HG3	1.77	0.65
1:A:182:ASP:HB3	3:A:1201:ADP:HN62	1.62	0.65
1:A:1065:GLU:OE2	1:A:1095:ARG:NH1	2.31	0.64
1:A:182:ASP:OD2	3:A:1201:ADP:N6	2.32	0.63
1:A:303:ARG:NH1	2:C:4:A:C4	2.68	0.61
1:A:966:SER:HB2	1:A:969:ILE:HD13	1.83	0.60
1:A:627:LEU:HD13	1:A:635:PRO:HA	1.84	0.60
1:A:960:ARG:HB3	1:A:963:ASN:HD21	1.66	0.59
1:A:712:ARG:NH1	1:A:803:GLY:O	2.36	0.58
1:A:144:SER:HB3	1:A:352:PHE:HB2	1.84	0.57

Continued on next page...

Continued from previous page...

Atom-1	Atom-2	Interatomic distance (Å)	Clash overlap (Å)
1:A:735:ARG:HH21	1:A:768:ARG:HH22	1.52	0.57
2:C:4:A:O5'	2:C:4:A:H8	1.87	0.57
1:A:511:SER:HB3	2:C:3:A:H5'	1.86	0.57
1:A:552:PHE:HB2	1:A:591:MET:HG2	1.88	0.56
1:A:724:TYR:CD2	1:A:759:VAL:HG11	2.40	0.56
1:A:225:ARG:HH21	1:A:266:LEU:HD11	1.71	0.55
1:A:870:ASN:O	1:A:872:LEU:N	2.38	0.55
1:A:722:VAL:HB	1:A:778:MET:HE3	1.89	0.55
1:A:303:ARG:NH1	2:C:3:A:C2	2.74	0.55
1:A:922:ARG:HD3	1:A:931:GLU:HG2	1.86	0.55
1:A:516:ILE:HB	1:A:1101:PHE:HE1	1.71	0.55
1:A:487:GLU:HG2	1:A:490:LYS:HE2	1.89	0.55
1:A:724:TYR:HD2	1:A:759:VAL:HG11	1.72	0.54
1:A:240:TYR:CG	1:A:252:LEU:HD23	2.42	0.54
1:A:361:PHE:HB2	1:A:372:ILE:HD13	1.90	0.54
1:A:240:TYR:HE1	1:A:251:GLY:HA2	1.73	0.54
1:A:243:PHE:HB3	1:A:250:VAL:HG21	1.89	0.53
1:A:948:GLY:H	1:A:950:GLU:CD	2.12	0.53
1:A:985:THR:HB	1:A:1050:THR:HG22	1.90	0.53
1:A:760:SER:OG	1:A:761:GLY:N	2.41	0.52
1:A:778:MET:O	1:A:780:ALA:N	2.42	0.52
1:A:979:PHE:O	1:A:1027:LYS:NZ	2.24	0.52
1:A:359:ASN:HB3	1:A:373:VAL:HB	1.91	0.52
1:A:533:LEU:HD22	1:A:535:ALA:HB2	1.92	0.52
2:C:2:A:N6	2:C:3:A:N1	2.57	0.52
1:A:298:MET:HG3	1:A:307:TRP:HB2	1.92	0.52
1:A:813:LEU:HB3	1:A:819:LYS:HG2	1.91	0.52
1:A:713:LEU:HD23	1:A:837:ILE:HG21	1.91	0.51
1:A:934:GLN:HG3	1:A:935:MET:H	1.75	0.51
1:A:599:PRO:O	1:A:602:ALA:N	2.36	0.51
1:A:295:ILE:HG12	1:A:324:SER:HB2	1.93	0.51
1:A:979:PHE:HD1	1:A:980:ASP:H	1.58	0.51
1:A:170:PRO:HD2	1:A:194:ARG:HH21	1.75	0.50
1:A:509:HIS:NE2	1:A:522:GLU:OE1	2.38	0.50
1:A:249:ASP:O	1:A:263:ALA:HB1	2.11	0.50
1:A:449:SER:HB2	1:A:452:GLU:HG2	1.92	0.49
1:A:557:LYS:N	1:A:564:ARG:O	2.44	0.49
2:C:2:A:C6	2:C:3:A:C2	3.00	0.49
1:A:760:SER:O	1:A:777:ILE:N	2.34	0.49
1:A:499:LEU:HB3	1:A:500:PRO:HD3	1.95	0.49
1:A:814:GLU:N	1:A:818:GLU:OE2	2.44	0.49

Continued on next page...

Continued from previous page...

Atom-1	Atom-2	Interatomic distance (Å)	Clash overlap (Å)
1:A:739:LYS:HG3	1:A:740:ASN:H	1.78	0.49
1:A:924:LEU:HD23	1:A:926:PHE:HE1	1.78	0.48
2:C:3:A:H8	2:C:3:A:H5''	1.78	0.48
1:A:232:ILE:CA	2:C:4:A:H4'	2.44	0.48
1:A:303:ARG:NH1	2:C:4:A:N3	2.61	0.48
1:A:340:ILE:HG13	1:A:341:HIS:HD1	1.78	0.48
1:A:962:PHE:O	1:A:1086:LYS:NZ	2.46	0.48
1:A:1046:ILE:HA	1:A:1049:MET:HE2	1.96	0.48
1:A:878:LEU:HD13	1:A:881:LEU:HD12	1.96	0.48
1:A:994:LYS:HB3	1:A:995:PRO:HD3	1.96	0.47
1:A:303:ARG:HD2	2:C:4:A:N3	2.28	0.47
1:A:652:VAL:HG13	1:A:653:PRO:HD3	1.96	0.47
1:A:232:ILE:HA	2:C:4:A:H4'	1.95	0.47
1:A:1043:PHE:HA	1:A:1046:ILE:HD12	1.96	0.47
1:A:232:ILE:HD11	1:A:235:LEU:HB2	1.96	0.47
1:A:809:LEU:HD12	1:A:810:PRO:HD2	1.96	0.47
1:A:283:ILE:O	1:A:287:VAL:HG23	2.15	0.47
1:A:637:TYR:CZ	1:A:641:ARG:HD2	2.50	0.47
1:A:978:ILE:HD11	1:A:1063:ARG:HB3	1.97	0.46
1:A:297:TYR:HE2	1:A:573:GLN:HE22	1.64	0.46
1:A:1000:GLN:HG3	1:A:1023:VAL:HG13	1.96	0.46
1:A:362:PHE:O	1:A:592:MET:HA	2.15	0.46
1:A:716:ILE:HG13	1:A:755:VAL:HG11	1.96	0.46
1:A:515:PRO:HA	1:A:518:LYS:HE3	1.97	0.46
1:A:611:ASP:OD1	1:A:611:ASP:N	2.46	0.46
2:C:3:A:H5'	2:C:4:A:OP2	2.15	0.46
1:A:232:ILE:HB	2:C:4:A:H4'	1.97	0.45
1:A:147:ILE:HA	1:A:350:THR:HG22	1.99	0.45
1:A:487:GLU:O	1:A:490:LYS:HG2	2.16	0.45
1:A:142:VAL:HA	1:A:143:LEU:HA	1.67	0.45
1:A:381:GLU:OE1	1:A:385:ASN:ND2	2.50	0.45
1:A:169:PRO:HA	1:A:170:PRO:HD3	1.85	0.45
1:A:207:GLY:HA2	3:A:1201:ADP:PA	2.57	0.45
1:A:540:SER:O	1:A:577:ARG:NH2	2.48	0.45
1:A:544:ASN:ND2	3:A:1201:ADP:O1A	2.50	0.45
1:A:546:PRO:HG2	1:A:580:ARG:HG2	1.99	0.45
1:A:813:LEU:HD21	1:A:822:VAL:HG21	1.99	0.44
1:A:735:ARG:HH21	1:A:768:ARG:NH2	2.14	0.44
1:A:801:ALA:HB1	1:A:839:ILE:HD12	1.97	0.44
1:A:208:LYS:O	1:A:211:VAL:HG12	2.16	0.44
1:A:137:GLU:N	1:A:137:GLU:OE2	2.51	0.44

Continued on next page...

Continued from previous page...

Atom-1	Atom-2	Interatomic distance (Å)	Clash overlap (Å)
1:A:525:PHE:HZ	1:A:547:ALA:HB2	1.83	0.44
1:A:240:TYR:CD2	1:A:252:LEU:HD23	2.52	0.44
1:A:613:LEU:O	1:A:647:GLN:NE2	2.49	0.43
1:A:450:LYS:NZ	2:C:2:A:OP2	2.51	0.43
1:A:622:ASN:HB2	1:A:950:GLU:HG2	1.99	0.43
1:A:272:ILE:O	1:A:276:MET:HG2	2.18	0.43
1:A:811:LYS:NZ	1:A:812:ARG:HB2	2.33	0.43
1:A:327:ILE:HG13	1:A:330:ALA:HB2	2.00	0.43
1:A:225:ARG:HG2	1:A:264:SER:HA	2.01	0.43
1:A:292:PHE:HB3	1:A:307:TRP:HZ3	1.83	0.43
1:A:269:THR:HG22	1:A:271:GLU:H	1.82	0.43
1:A:435:ILE:HB	1:A:440:PHE:HB2	1.99	0.43
1:A:548:ARG:HH21	1:A:583:LEU:HB2	1.83	0.43
1:A:655:LEU:HD23	1:A:902:ILE:HG12	2.01	0.43
1:A:918:LYS:HA	1:A:921:LEU:HD12	2.01	0.43
1:A:489:ASP:HA	1:A:492:LEU:HD13	2.01	0.42
1:A:201:SER:HB3	1:A:349:TYR:HD2	1.83	0.42
1:A:303:ARG:HE	1:A:303:ARG:HB2	1.31	0.42
1:A:637:TYR:O	1:A:641:ARG:HG3	2.19	0.42
1:A:449:SER:O	1:A:453:CYS:HB2	2.20	0.42
1:A:1065:GLU:HG3	1:A:1091:LEU:HD11	2.01	0.42
1:A:759:VAL:HG12	1:A:779:PRO:HD3	2.02	0.42
1:A:538:THR:OG1	2:C:3:A:H4'	2.20	0.42
1:A:597:LEU:HD23	1:A:597:LEU:HA	1.85	0.42
1:A:654:GLN:HG3	1:A:657:ARG:HH22	1.85	0.42
1:A:1053:TYR:HB2	1:A:1056:SER:HB2	2.02	0.41
1:A:857:LEU:HD12	1:A:857:LEU:HA	1.81	0.41
1:A:230:SER:HB2	1:A:236:SER:OG	2.21	0.41
1:A:234:ALA:HB2	1:A:1059:ARG:HH21	1.85	0.41
1:A:394:LYS:HA	1:A:394:LYS:HD3	1.81	0.41
1:A:1063:ARG:NH1	2:C:4:A:N1	2.68	0.41
1:A:190:ALA:O	1:A:194:ARG:HG2	2.21	0.41
1:A:606:VAL:HG13	1:A:607:VAL:HG23	2.03	0.41
1:A:739:LYS:O	1:A:740:ASN:ND2	2.40	0.41
1:A:436:LEU:HD22	1:A:465:PHE:CD1	2.55	0.41
1:A:648:ASN:ND2	1:A:905:ALA:O	2.53	0.41
1:A:662:LEU:HB3	1:A:895:ILE:HG12	2.02	0.41
1:A:983:ILE:HD12	1:A:1027:LYS:HD2	2.02	0.41
1:A:619:LEU:HD12	1:A:913:GLU:HB3	2.03	0.41
1:A:669:ILE:O	1:A:888:LYS:NZ	2.52	0.41
1:A:875:SER:HA	1:A:876:PRO:HD3	1.73	0.40

Continued on next page...

Continued from previous page...

Atom-1	Atom-2	Interatomic distance (Å)	Clash overlap (Å)
2:C:1:A:C2	2:C:2:A:N6	2.90	0.40
1:A:295:ILE:HD13	1:A:322:PHE:HB3	2.04	0.40
1:A:924:LEU:HD23	1:A:926:PHE:CE1	2.56	0.40
1:A:314:LEU:HD13	1:A:320:TYR:HE1	1.86	0.40
1:A:379:PHE:CE2	1:A:381:GLU:HG2	2.57	0.40
1:A:811:LYS:HD2	1:A:812:ARG:N	2.36	0.40
1:A:914:LEU:HG	1:A:918:LYS:HE2	2.03	0.40

There are no symmetry-related clashes.

5.3 Torsion angles [i](#)

5.3.1 Protein backbone [i](#)

In the following table, the Percentiles column shows the percent Ramachandran outliers of the chain as a percentile score with respect to all X-ray entries followed by that with respect to entries of similar resolution.

The Analysed column shows the number of residues for which the backbone conformation was analysed, and the total number of residues.

Mol	Chain	Analysed	Favoured	Allowed	Outliers	Percentiles
1	A	960/1106 (87%)	912 (95%)	45 (5%)	3 (0%)	41 74

All (3) Ramachandran outliers are listed below:

Mol	Chain	Res	Type
1	A	739	LYS
1	A	876	PRO
1	A	765	PRO

5.3.2 Protein sidechains [i](#)

In the following table, the Percentiles column shows the percent sidechain outliers of the chain as a percentile score with respect to all X-ray entries followed by that with respect to entries of similar resolution.

The Analysed column shows the number of residues for which the sidechain conformation was analysed, and the total number of residues.

Mol	Chain	Analysed	Rotameric	Outliers	Percentiles
1	A	842/952 (88%)	817 (97%)	25 (3%)	41 66

All (25) residues with a non-rotameric sidechain are listed below:

Mol	Chain	Res	Type
1	A	256	ASP
1	A	278	TYR
1	A	303	ARG
1	A	381	GLU
1	A	391	ILE
1	A	538	THR
1	A	557	LYS
1	A	558	TRP
1	A	563	ARG
1	A	564	ARG
1	A	583	LEU
1	A	595	ASP
1	A	597	LEU
1	A	735	ARG
1	A	739	LYS
1	A	740	ASN
1	A	767	THR
1	A	768	ARG
1	A	811	LYS
1	A	873	HIS
1	A	946	THR
1	A	979	PHE
1	A	982	LYS
1	A	1017	VAL
1	A	1030	LEU

Sometimes sidechains can be flipped to improve hydrogen bonding and reduce clashes. All (1) such sidechains are listed below:

Mol	Chain	Res	Type
1	A	447	ASN

5.3.3 RNA [i](#)

Mol	Chain	Analysed	Backbone Outliers	Pucker Outliers
2	C	3/4 (75%)	3 (100%)	0

All (3) RNA backbone outliers are listed below:

Mol	Chain	Res	Type
2	C	2	A
2	C	3	A
2	C	4	A

There are no RNA pucker outliers to report.

5.4 Non-standard residues in protein, DNA, RNA chains [i](#)

There are no non-standard protein/DNA/RNA residues in this entry.

5.5 Carbohydrates [i](#)

There are no monosaccharides in this entry.

5.6 Ligand geometry [i](#)

1 ligand is modelled in this entry.

In the following table, the Counts columns list the number of bonds (or angles) for which Mogul statistics could be retrieved, the number of bonds (or angles) that are observed in the model and the number of bonds (or angles) that are defined in the Chemical Component Dictionary. The Link column lists molecule types, if any, to which the group is linked. The Z score for a bond length (or angle) is the number of standard deviations the observed value is removed from the expected value. A bond length (or angle) with $|Z| > 2$ is considered an outlier worth inspection. RMSZ is the root-mean-square of all Z scores of the bond lengths (or angles).

Mol	Type	Chain	Res	Link	Bond lengths			Bond angles		
					Counts	RMSZ	$\# Z > 2$	Counts	RMSZ	$\# Z > 2$
3	ADP	A	1201	-	24,29,29	0.92	1 (4%)	29,45,45	1.46	4 (13%)

In the following table, the Chirals column lists the number of chiral outliers, the number of chiral centers analysed, the number of these observed in the model and the number defined in the Chemical Component Dictionary. Similar counts are reported in the Torsion and Rings columns. '-' means no outliers of that kind were identified.

Mol	Type	Chain	Res	Link	Chirals	Torsions	Rings
3	ADP	A	1201	-	-	5/12/32/32	0/3/3/3

All (1) bond length outliers are listed below:

Mol	Chain	Res	Type	Atoms	Z	Observed(Å)	Ideal(Å)
3	A	1201	ADP	C5-C4	2.26	1.46	1.40

All (4) bond angle outliers are listed below:

Mol	Chain	Res	Type	Atoms	Z	Observed(°)	Ideal(°)
3	A	1201	ADP	N3-C2-N1	-3.42	123.33	128.68
3	A	1201	ADP	PA-O3A-PB	-3.09	122.21	132.83
3	A	1201	ADP	C3'-C2'-C1'	2.58	104.86	100.98
3	A	1201	ADP	C4-C5-N7	-2.24	107.06	109.40

There are no chirality outliers.

All (5) torsion outliers are listed below:

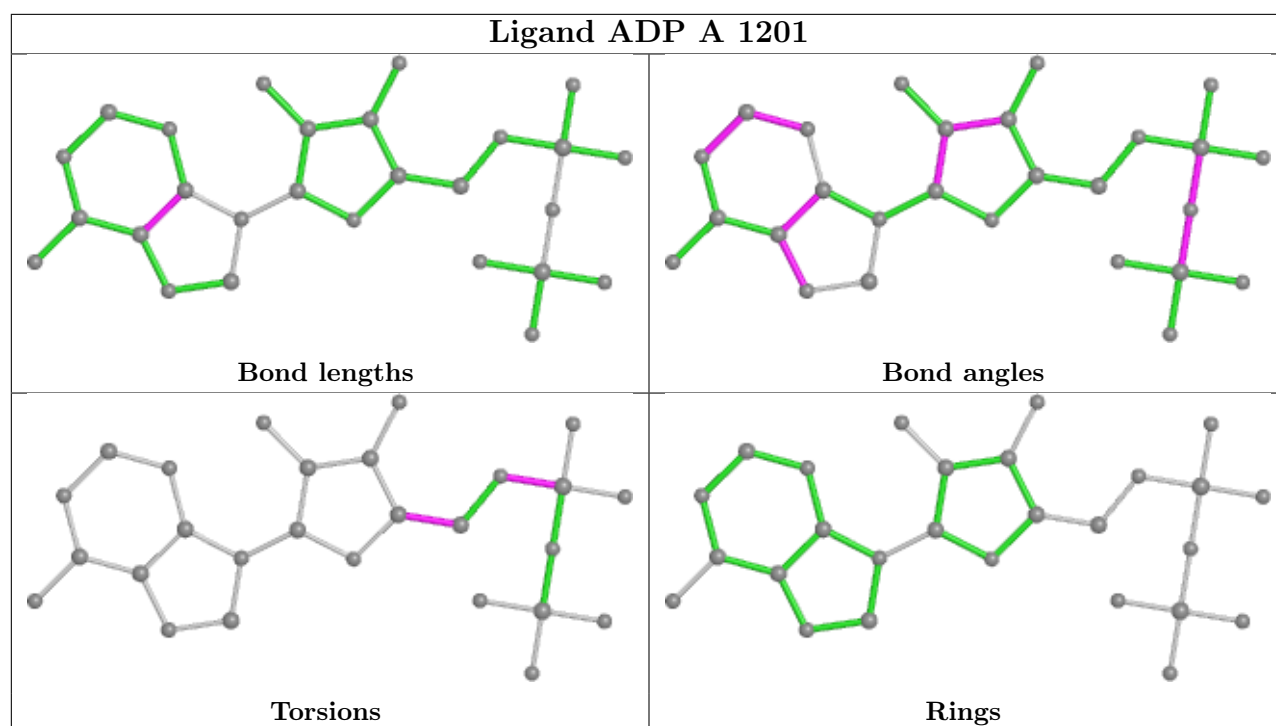
Mol	Chain	Res	Type	Atoms
3	A	1201	ADP	C5'-O5'-PA-O2A
3	A	1201	ADP	C5'-O5'-PA-O3A
3	A	1201	ADP	C3'-C4'-C5'-O5'
3	A	1201	ADP	O4'-C4'-C5'-O5'
3	A	1201	ADP	C5'-O5'-PA-O1A

There are no ring outliers.

1 monomer is involved in 4 short contacts:

Mol	Chain	Res	Type	Clashes	Symm-Clashes
3	A	1201	ADP	4	0

The following is a two-dimensional graphical depiction of Mogul quality analysis of bond lengths, bond angles, torsion angles, and ring geometry for all instances of the Ligand of Interest. In addition, ligands with molecular weight > 250 and outliers as shown on the validation Tables will also be included. For torsion angles, if less than 5% of the Mogul distribution of torsion angles is within 10 degrees of the torsion angle in question, then that torsion angle is considered an outlier. Any bond that is central to one or more torsion angles identified as an outlier by Mogul will be highlighted in the graph. For rings, the root-mean-square deviation (RMSD) between the ring in question and similar rings identified by Mogul is calculated over all ring torsion angles. If the average RMSD is greater than 60 degrees and the minimal RMSD between the ring in question and any Mogul-identified rings is also greater than 60 degrees, then that ring is considered an outlier. The outliers are highlighted in purple. The color gray indicates Mogul did not find sufficient equivalents in the CSD to analyse the geometry.



5.7 Other polymers [i](#)

There are no such residues in this entry.

5.8 Polymer linkage issues [i](#)

There are no chain breaks in this entry.

6 Fit of model and data [i](#)

6.1 Protein, DNA and RNA chains [i](#)

In the following table, the column labelled ‘#RSRZ > 2’ contains the number (and percentage) of RSRZ outliers, followed by percent RSRZ outliers for the chain as percentile scores relative to all X-ray entries and entries of similar resolution. The OWAB column contains the minimum, median, 95th percentile and maximum values of the occupancy-weighted average B-factor per residue. The column labelled ‘Q < 0.9’ lists the number of (and percentage) of residues with an average occupancy less than 0.9.

Mol	Chain	Analysed	<RSRZ>	#RSRZ>2	OWAB(Å ²)	Q<0.9
1	A	964/1106 (87%)	0.42	55 (5%) 23 19	89, 141, 188, 235	0
2	C	4/4 (100%)	3.07	3 (75%) 0 0	191, 193, 194, 203	0
All	All	968/1110 (87%)	0.43	58 (5%) 21 17	89, 141, 191, 235	0

All (58) RSRZ outliers are listed below:

Mol	Chain	Res	Type	RSRZ
1	A	129	GLY	8.2
1	A	119	PHE	6.7
1	A	1102	ASN	5.9
1	A	115	MET	5.5
2	C	4	A	5.5
1	A	1097	ASP	5.3
1	A	128	THR	4.8
1	A	116	THR	4.6
1	A	125	ARG	4.2
1	A	117	ASP	4.2
1	A	136	THR	4.1
1	A	1101	PHE	3.9
1	A	123	GLU	3.9
1	A	593	VAL	3.4
1	A	1100	SER	3.3
1	A	609	ASN	3.2
1	A	120	GLN	3.2
1	A	780	ALA	3.2
1	A	1105	TYR	3.1
1	A	121	THR	3.1
1	A	912	ASP	3.1
2	C	3	A	3.0
1	A	122	ALA	3.0
1	A	132	GLY	2.9

Continued on next page...

Continued from previous page...

Mol	Chain	Res	Type	RSRZ
1	A	594	ASP	2.8
1	A	364	ALA	2.8
1	A	134	ALA	2.7
1	A	781	GLY	2.7
1	A	808	PHE	2.6
1	A	916	SER	2.6
1	A	1070	GLN	2.6
1	A	1099	VAL	2.5
1	A	133	PHE	2.5
1	A	1098	ILE	2.5
1	A	135	PRO	2.4
1	A	118	ALA	2.3
1	A	608	GLY	2.3
1	A	681	TYR	2.3
1	A	1104	LEU	2.3
1	A	130	ALA	2.3
1	A	740	ASN	2.3
1	A	1087	PHE	2.2
1	A	124	SER	2.2
1	A	126	GLU	2.2
1	A	656	GLU	2.2
1	A	580	ARG	2.2
1	A	677	VAL	2.2
1	A	127	VAL	2.1
1	A	986	GLN	2.1
1	A	615	SER	2.1
1	A	137	GLU	2.1
1	A	595	ASP	2.1
1	A	610	GLN	2.1
1	A	614	ASN	2.1
1	A	935	MET	2.0
1	A	172	GLU	2.0
2	C	1	A	2.0
1	A	908	VAL	2.0

6.2 Non-standard residues in protein, DNA, RNA chains [\(i\)](#)

There are no non-standard protein/DNA/RNA residues in this entry.

6.3 Carbohydrates [i](#)

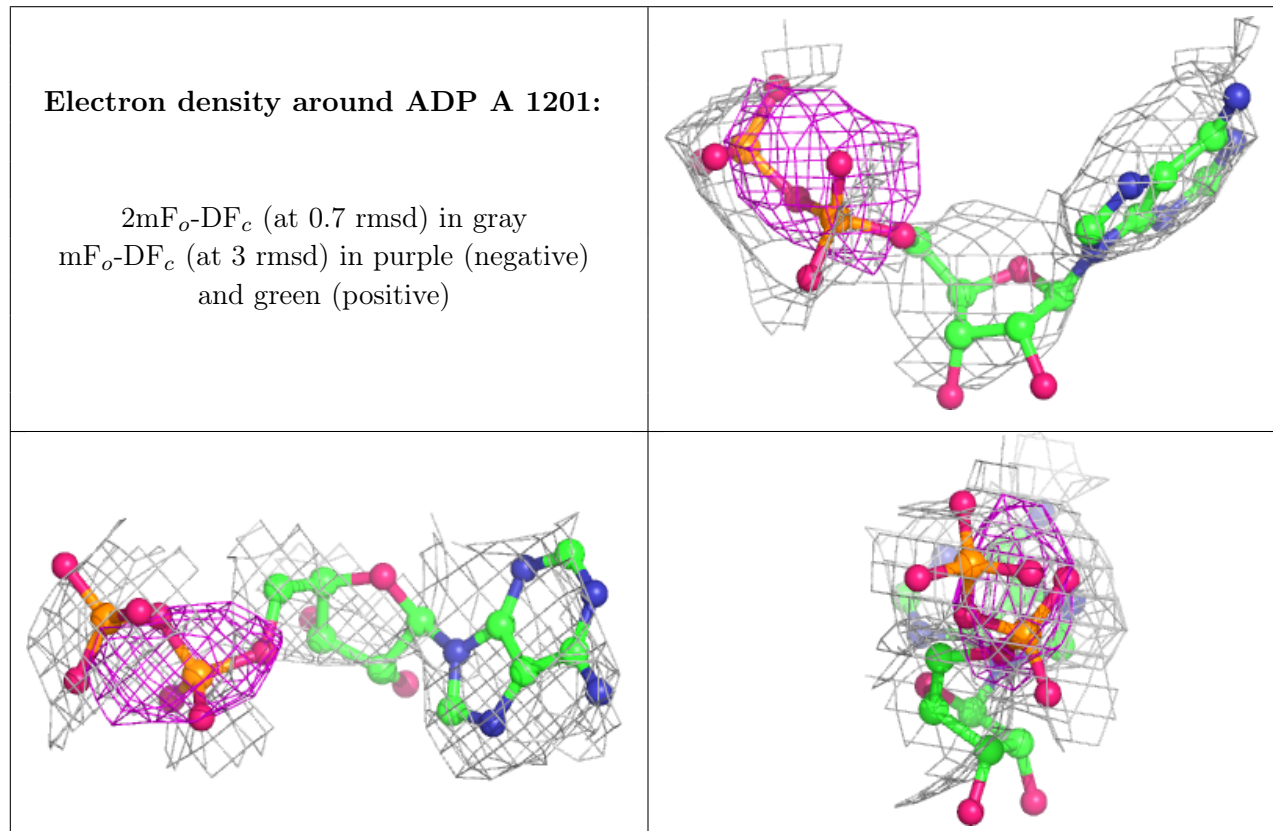
There are no monosaccharides in this entry.

6.4 Ligands [i](#)

In the following table, the Atoms column lists the number of modelled atoms in the group and the number defined in the chemical component dictionary. The B-factors column lists the minimum, median, 95th percentile and maximum values of B factors of atoms in the group. The column labelled 'Q< 0.9' lists the number of atoms with occupancy less than 0.9.

Mol	Type	Chain	Res	Atoms	RSCC	RSR	B-factors(Å ²)	Q<0.9
3	ADP	A	1201	27/27	0.66	0.42	170,183,199,207	0

The following is a graphical depiction of the model fit to experimental electron density of all instances of the Ligand of Interest. In addition, ligands with molecular weight > 250 and outliers as shown on the geometry validation Tables will also be included. Each fit is shown from different orientation to approximate a three-dimensional view.



6.5 Other polymers [i](#)

There are no such residues in this entry.