



Full wwPDB X-ray Structure Validation Report ⓘ

Nov 20, 2023 – 11:37 PM JST

PDB ID : 7E0S
Title : Crystal Structure of Human Indoleamine 2,3-dioxygenase 1 (hIDO1) Complexed with (1R,2S)-2-(((6-Bromo-1H-indazol-4-yl)amino)methyl)cyclohexan-1-ol (23)
Authors : Li, G.-B.; Ning, X.-L.
Deposited on : 2021-01-28
Resolution : 2.71 Å(reported)

This is a Full wwPDB X-ray Structure Validation Report for a publicly released PDB entry.

We welcome your comments at validation@mail.wwpdb.org

A user guide is available at

<https://www.wwpdb.org/validation/2017/XrayValidationReportHelp>

with specific help available everywhere you see the ⓘ symbol.

The types of validation reports are described at

<http://www.wwpdb.org/validation/2017/FAQs#types>.

The following versions of software and data (see [references ⓘ](#)) were used in the production of this report:

MolProbity : 4.02b-467
Mogul : 1.8.5 (274361), CSD as541be (2020)
Xtrriage (Phenix) : 1.13
EDS : 2.36
buster-report : 1.1.7 (2018)
Percentile statistics : 20191225.v01 (using entries in the PDB archive December 25th 2019)
Refmac : 5.8.0158
CCP4 : 7.0.044 (Gargrove)
Ideal geometry (proteins) : Engh & Huber (2001)
Ideal geometry (DNA, RNA) : Parkinson et al. (1996)
Validation Pipeline (wwPDB-VP) : 2.36

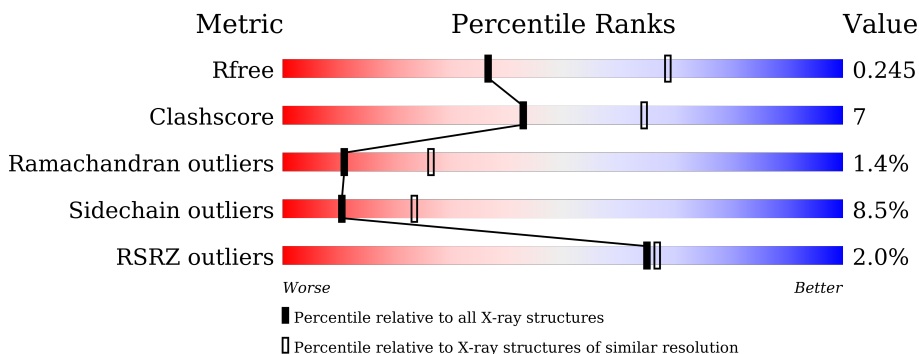
1 Overall quality at a glance

The following experimental techniques were used to determine the structure:

X-RAY DIFFRACTION

The reported resolution of this entry is 2.71 Å.

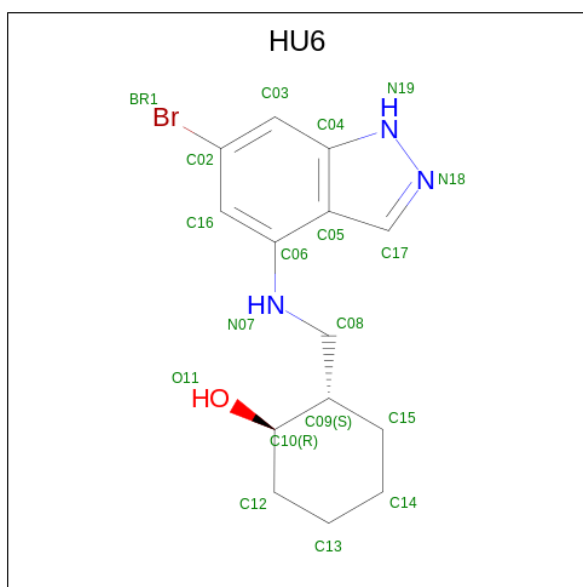
Percentile scores (ranging between 0-100) for global validation metrics of the entry are shown in the following graphic. The table shows the number of entries on which the scores are based.



Metric	Whole archive (#Entries)	Similar resolution (#Entries, resolution range(Å))
R_{free}	130704	3359 (2.74-2.70)
Clashscore	141614	3686 (2.74-2.70)
Ramachandran outliers	138981	3622 (2.74-2.70)
Sidechain outliers	138945	3623 (2.74-2.70)
RSRZ outliers	127900	3276 (2.74-2.70)

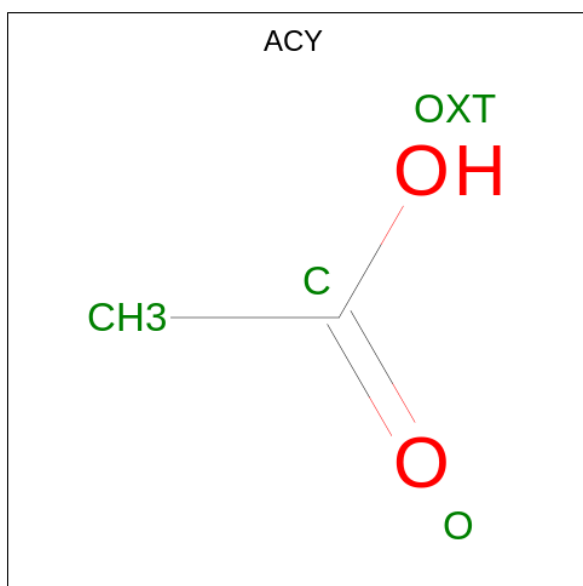
The table below summarises the geometric issues observed across the polymeric chains and their fit to the electron density. The red, orange, yellow and green segments of the lower bar indicate the fraction of residues that contain outliers for ≥ 3 , 2, 1 and 0 types of geometric quality criteria respectively. A grey segment represents the fraction of residues that are not modelled. The numeric value for each fraction is indicated below the corresponding segment, with a dot representing fractions $\leq 5\%$. The upper red bar (where present) indicates the fraction of residues that have poor fit to the electron density. The numeric value is given above the bar.

Mol	Chain	Length	Quality of chain
1	A	392	
1	B	392	



Mol	Chain	Residues	Atoms				ZeroOcc	AltConf	
			Total	Br	C	N			O
3	A	1	Total	Br	C	N	O	0	0
			19	1	14	3	1		
3	B	1	Total	Br	C	N	O	0	0
			19	1	14	3	1		

- Molecule 4 is ACETIC ACID (three-letter code: ACY) (formula: $C_2H_4O_2$) (labeled as "Ligand of Interest" by depositor).



Mol	Chain	Residues	Atoms			ZeroOcc	AltConf
			Total	C	O		
4	B	1	Total	C	O	0	0
			4	2	2		

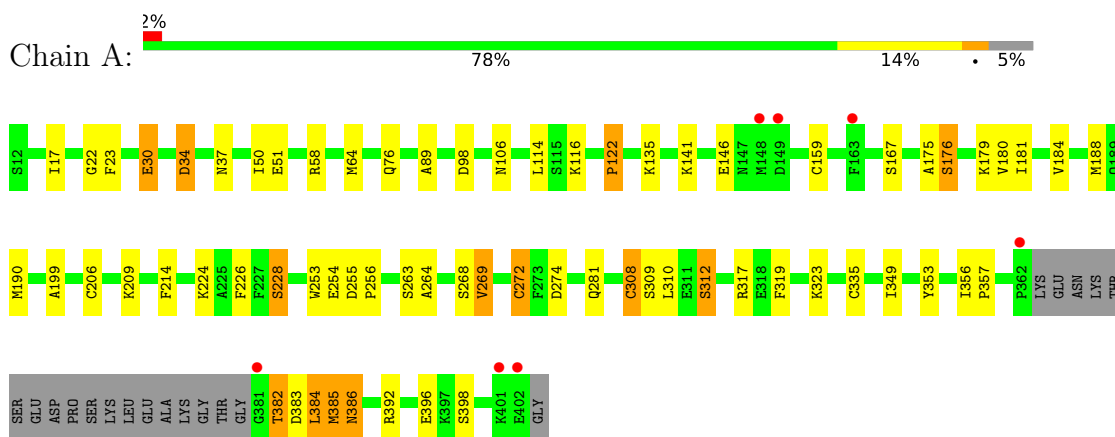
- Molecule 5 is water.

Mol	Chain	Residues	Atoms		ZeroOcc	AltConf
5	A	10	Total 11	O 11	0	1
5	B	12	Total 13	O 13	0	1

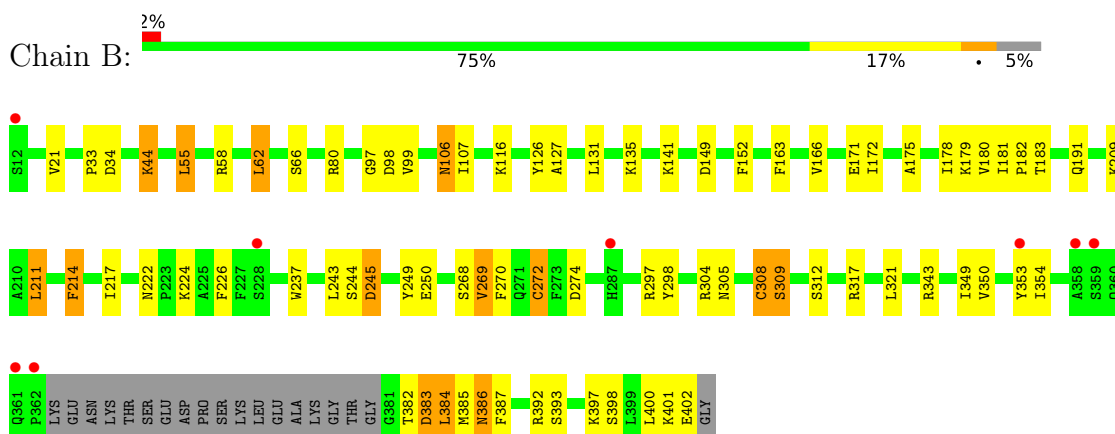
3 Residue-property plots

These plots are drawn for all protein, RNA, DNA and oligosaccharide chains in the entry. The first graphic for a chain summarises the proportions of the various outlier classes displayed in the second graphic. The second graphic shows the sequence view annotated by issues in geometry and electron density. Residues are color-coded according to the number of geometric quality criteria for which they contain at least one outlier: green = 0, yellow = 1, orange = 2 and red = 3 or more. A red dot above a residue indicates a poor fit to the electron density ($RSRZ > 2$). Stretches of 2 or more consecutive residues without any outlier are shown as a green connector. Residues present in the sample, but not in the model, are shown in grey.

- Molecule 1: Indoleamine 2,3-dioxygenase 1



- Molecule 1: Indoleamine 2,3-dioxygenase 1



4 Data and refinement statistics

Property	Value	Source
Space group	P 21 21 21	Depositor
Cell constants a, b, c, α , β , γ	85.69Å 96.34Å 130.23Å 90.00° 90.00° 90.00°	Depositor
Resolution (Å)	53.95 – 2.71 53.95 – 2.71	Depositor EDS
% Data completeness (in resolution range)	99.8 (53.95-2.71) 99.8 (53.95-2.71)	Depositor EDS
R_{merge}	0.12	Depositor
R_{sym}	(Not available)	Depositor
$\langle I/\sigma(I) \rangle$ ¹	2.08 (at 2.73Å)	Xtrriage
Refinement program	PHENIX 1.10.1_2155	Depositor
R, R_{free}	0.188 , 0.249 0.195 , 0.245	Depositor DCC
R_{free} test set	1996 reflections (6.69%)	wwPDB-VP
Wilson B-factor (Å ²)	63.4	Xtrriage
Anisotropy	0.390	Xtrriage
Bulk solvent k_{sol} (e/Å ³), B_{sol} (Å ²)	0.34 , 40.0	EDS
L-test for twinning ²	$\langle L \rangle = 0.50$, $\langle L^2 \rangle = 0.34$	Xtrriage
Estimated twinning fraction	No twinning to report.	Xtrriage
F_o, F_c correlation	0.95	EDS
Total number of atoms	6092	wwPDB-VP
Average B, all atoms (Å ²)	62.0	wwPDB-VP

Xtrriage's analysis on translational NCS is as follows: *The largest off-origin peak in the Patterson function is 5.12% of the height of the origin peak. No significant pseudotranslation is detected.*

¹Intensities estimated from amplitudes.

²Theoretical values of $\langle |L| \rangle$, $\langle L^2 \rangle$ for acentric reflections are 0.5, 0.333 respectively for untwinned datasets, and 0.375, 0.2 for perfectly twinned datasets.

5 Model quality [i](#)

5.1 Standard geometry [i](#)

Bond lengths and bond angles in the following residue types are not validated in this section: HEM, HU6, ACY

The Z score for a bond length (or angle) is the number of standard deviations the observed value is removed from the expected value. A bond length (or angle) with $|Z| > 5$ is considered an outlier worth inspection. RMSZ is the root-mean-square of all Z scores of the bond lengths (or angles).

Mol	Chain	Bond lengths		Bond angles	
		RMSZ	# $ Z > 5$	RMSZ	# $ Z > 5$
1	A	0.72	4/3039 (0.1%)	0.79	2/4111 (0.0%)
1	B	0.74	0/3039	0.82	3/4111 (0.1%)
All	All	0.73	4/6078 (0.1%)	0.80	5/8222 (0.1%)

Chiral center outliers are detected by calculating the chiral volume of a chiral center and verifying if the center is modelled as a planar moiety or with the opposite hand. A planarity outlier is detected by checking planarity of atoms in a peptide group, atoms in a mainchain group or atoms of a sidechain that are expected to be planar.

Mol	Chain	#Chirality outliers	#Planarity outliers
1	A	0	1

All (4) bond length outliers are listed below:

Mol	Chain	Res	Type	Atoms	Z	Observed(Å)	Ideal(Å)
1	A	308	CYS	CB-SG	-8.64	1.67	1.82
1	A	146	GLU	CG-CD	5.68	1.60	1.51
1	A	159	CYS	CB-SG	5.38	1.91	1.82
1	A	335	CYS	CB-SG	-5.14	1.73	1.81

All (5) bond angle outliers are listed below:

Mol	Chain	Res	Type	Atoms	Z	Observed(°)	Ideal(°)
1	A	308	CYS	CA-CB-SG	-8.45	98.78	114.00
1	B	62	LEU	CB-CG-CD1	-5.68	101.35	111.00
1	B	62	LEU	CA-CB-CG	5.46	127.86	115.30
1	B	55	LEU	CA-CB-CG	-5.11	103.55	115.30
1	A	190	MET	CG-SD-CE	5.05	108.27	100.20

There are no chirality outliers.

All (1) planarity outliers are listed below:

Mol	Chain	Res	Type	Group
1	A	253	TRP	Peptide

5.2 Too-close contacts [i](#)

In the following table, the Non-H and H(model) columns list the number of non-hydrogen atoms and hydrogen atoms in the chain respectively. The H(added) column lists the number of hydrogen atoms added and optimized by MolProbity. The Clashes column lists the number of clashes within the asymmetric unit, whereas Symm-Clashes lists symmetry-related clashes.

Mol	Chain	Non-H	H(model)	H(added)	Clashes	Symm-Clashes
1	A	2970	0	2977	35	1
1	B	2970	0	2977	44	1
2	A	43	0	30	9	0
2	B	43	0	30	8	0
3	A	19	0	0	2	0
3	B	19	0	0	1	0
4	B	4	0	3	0	0
5	A	11	0	0	0	0
5	B	13	0	0	1	0
All	All	6092	0	6017	82	1

The all-atom clashscore is defined as the number of clashes found per 1000 atoms (including hydrogen atoms). The all-atom clashscore for this structure is 7.

All (82) close contacts within the same asymmetric unit are listed below, sorted by their clash magnitude.

Atom-1	Atom-2	Interatomic distance (Å)	Clash overlap (Å)
1:A:384:LEU:O	1:A:386:ASN:N	2.22	0.73
1:B:402:GLU:O	5:B:601:HOH:O	2.14	0.65
1:B:353:TYR:CB	2:B:501:HEM:HBC1	2.28	0.64
1:A:319:PHE:O	1:A:323:LYS:HG2	1.99	0.62
1:B:383:ASP:C	1:B:384:LEU:HD13	2.21	0.61
1:B:386:ASN:O	1:B:386:ASN:ND2	2.35	0.60
1:B:175:ALA:HA	1:B:178:ILE:CD1	2.32	0.58
1:B:321:LEU:HD21	1:B:400:LEU:HD22	1.86	0.58
1:B:297:ARG:NH1	1:B:304:ARG:HD3	2.19	0.58
1:B:353:TYR:HB3	2:B:501:HEM:HBC1	1.86	0.57
1:A:226:PHE:CE2	2:A:501:HEM:CBC	2.89	0.56
1:A:23:PHE:HD2	1:A:269:VAL:HG13	1.71	0.56

Continued on next page...

Continued from previous page...

Atom-1	Atom-2	Interatomic distance (Å)	Clash overlap (Å)
1:B:384:LEU:CA	1:B:385:MET:HB2	2.35	0.56
1:B:127:ALA:HA	1:B:131:LEU:HD12	1.88	0.55
1:A:312:SER:CB	1:B:305:ASN:OD1	2.55	0.54
1:A:384:LEU:HD11	2:A:501:HEM:HMD2	1.90	0.54
1:A:263:SER:OG	2:A:501:HEM:O1D	2.16	0.54
1:A:255:ASP:HB3	1:A:256:PRO:HD2	1.89	0.53
2:B:501:HEM:HBA1	2:B:501:HEM:HMA2	1.90	0.53
1:A:264:ALA:HB3	2:A:501:HEM:C4A	2.45	0.52
1:B:44:LYS:HE3	1:B:152:PHE:CE1	2.44	0.52
1:A:312:SER:HB2	1:B:305:ASN:OD1	2.10	0.52
1:A:30:GLU:OE2	1:A:135:LYS:HE2	2.10	0.52
1:A:50:ILE:HD11	1:A:89:ALA:HB1	1.90	0.52
1:A:383:ASP:HA	1:A:384:LEU:O	2.10	0.52
1:B:297:ARG:HH11	1:B:304:ARG:HD3	1.75	0.52
1:B:353:TYR:HB2	2:B:501:HEM:HBC1	1.91	0.51
1:B:269:VAL:HG23	1:B:270:PHE:CD2	2.46	0.51
1:A:76:GLN:HB3	1:A:114:LEU:HD11	1.93	0.50
1:B:97:GLY:O	1:B:99:VAL:HG13	2.12	0.50
1:B:384:LEU:HA	1:B:386:ASN:H	1.77	0.50
1:B:214:PHE:O	1:B:214:PHE:CD1	2.65	0.50
1:A:23:PHE:CD2	1:A:269:VAL:HG13	2.48	0.49
2:B:501:HEM:ND	3:B:502:HU6:C17	2.76	0.49
2:A:501:HEM:O2D	3:A:502:HU6:C08	2.60	0.49
1:A:353:TYR:HB3	2:A:501:HEM:HBC1	1.94	0.48
1:B:214:PHE:O	1:B:214:PHE:HD1	1.96	0.48
1:B:268:SER:O	1:B:272:CYS:HB3	2.13	0.48
1:A:34:ASP:O	1:A:37:ASN:OD1	2.33	0.47
1:B:178:ILE:HD11	1:B:269:VAL:HG12	1.97	0.47
1:B:163:PHE:CD1	1:B:226:PHE:HE1	2.32	0.47
1:B:175:ALA:HA	1:B:178:ILE:HD12	1.97	0.46
1:B:384:LEU:HA	1:B:385:MET:HB2	1.97	0.46
1:B:62:LEU:O	1:B:106:ASN:ND2	2.48	0.46
1:A:22:GLY:HA3	1:A:175:ALA:CB	2.46	0.46
1:B:249:TYR:O	1:B:250:GLU:C	2.55	0.45
1:B:166:VAL:HG12	2:B:501:HEM:HBB1	1.99	0.45
1:B:211:LEU:HD12	1:B:211:LEU:O	2.17	0.44
1:B:274:ASP:OD2	1:B:343:ARG:NH2	2.39	0.44
2:B:501:HEM:HBA1	2:B:501:HEM:CMA	2.48	0.44
1:A:181:ILE:HG21	1:A:310:LEU:HD21	1.98	0.43
1:A:317:ARG:NH1	1:A:398:SER:O	2.46	0.43
2:A:501:HEM:HMC2	2:A:501:HEM:HBC2	2.00	0.43

Continued on next page...

Continued from previous page...

Atom-1	Atom-2	Interatomic distance (Å)	Clash overlap (Å)
1:A:263:SER:HA	3:A:502:HU6:C06	2.47	0.43
1:B:298:TYR:CD1	1:B:298:TYR:N	2.87	0.43
1:B:21:VAL:HG12	1:B:172:ILE:HD13	1.99	0.43
1:B:180:VAL:O	1:B:183:THR:HB	2.18	0.43
1:B:353:TYR:HB2	2:B:501:HEM:CBC	2.48	0.43
1:A:274:ASP:OD2	1:A:281:GLN:HG3	2.19	0.43
1:A:224:LYS:O	1:A:228:SER:OG	2.33	0.42
1:B:181:ILE:N	1:B:182:PRO:HD2	2.34	0.42
1:A:22:GLY:HA3	1:A:175:ALA:HB2	2.01	0.42
1:B:243:LEU:O	1:B:245:ASP:N	2.53	0.42
1:A:17:ILE:CD1	1:A:23:PHE:CE1	3.02	0.42
1:A:167:SER:HA	2:A:501:HEM:CBB	2.49	0.42
1:A:353:TYR:CB	2:A:501:HEM:HBC1	2.49	0.42
1:A:50:ILE:HD11	1:A:89:ALA:CB	2.50	0.42
1:B:126:TYR:OH	1:B:171:GLU:HG3	2.19	0.42
1:B:350:VAL:HG12	1:B:350:VAL:O	2.20	0.42
1:B:106:ASN:OD1	1:B:106:ASN:N	2.43	0.42
1:B:297:ARG:HD3	1:B:297:ARG:HA	1.90	0.42
1:B:317:ARG:NH1	1:B:398:SER:O	2.45	0.41
1:B:21:VAL:HA	1:B:172:ILE:HG23	2.01	0.41
1:A:356:ILE:HB	1:A:357:PRO:HD3	2.02	0.41
1:A:64:MET:N	1:A:106:ASN:OD1	2.54	0.41
1:B:393:SER:OG	1:B:397:LYS:HE2	2.21	0.41
1:A:268:SER:O	1:A:272:CYS:HB3	2.21	0.41
1:A:180:VAL:HG12	1:A:199:ALA:HB1	2.04	0.40
1:B:308:CYS:SG	1:B:309:SER:N	2.94	0.40
1:A:184:VAL:O	1:A:188:MET:HG3	2.22	0.40
1:A:122:PRO:HG2	1:A:122:PRO:O	2.22	0.40
1:A:176:SER:HB3	1:A:206:CYS:SG	2.62	0.40

All (1) symmetry-related close contacts are listed below. The label for Atom-2 includes the symmetry operator and encoded unit-cell translations to be applied.

Atom-1	Atom-2	Interatomic distance (Å)	Clash overlap (Å)
1:A:98:ASP:OD1	1:B:401:LYS:NZ[3_654]	2.08	0.12

5.3 Torsion angles [i](#)

5.3.1 Protein backbone [i](#)

In the following table, the Percentiles column shows the percent Ramachandran outliers of the chain as a percentile score with respect to all X-ray entries followed by that with respect to entries of similar resolution.

The Analysed column shows the number of residues for which the backbone conformation was analysed, and the total number of residues.

Mol	Chain	Analysed	Favoured	Allowed	Outliers	Percentiles	
1	A	370/392 (94%)	352 (95%)	14 (4%)	4 (1%)	14	32
1	B	370/392 (94%)	339 (92%)	25 (7%)	6 (2%)	9	23
All	All	740/784 (94%)	691 (93%)	39 (5%)	10 (1%)	11	26

All (10) Ramachandran outliers are listed below:

Mol	Chain	Res	Type
1	A	385	MET
1	B	382	THR
1	A	382	THR
1	B	244	SER
1	A	384	LEU
1	B	98	ASP
1	A	254	GLU
1	B	179	LYS
1	B	33	PRO
1	B	354	ILE

5.3.2 Protein sidechains [i](#)

In the following table, the Percentiles column shows the percent sidechain outliers of the chain as a percentile score with respect to all X-ray entries followed by that with respect to entries of similar resolution.

The Analysed column shows the number of residues for which the sidechain conformation was analysed, and the total number of residues.

Mol	Chain	Analysed	Rotameric	Outliers	Percentiles	
1	A	324/339 (96%)	301 (93%)	23 (7%)	14	33
1	B	324/339 (96%)	292 (90%)	32 (10%)	8	17
All	All	648/678 (96%)	593 (92%)	55 (8%)	10	23

All (55) residues with a non-rotameric sidechain are listed below:

Mol	Chain	Res	Type
1	A	30	GLU
1	A	34	ASP
1	A	51	GLU
1	A	58	ARG
1	A	116	LYS
1	A	122	PRO
1	A	141	LYS
1	A	176	SER
1	A	179	LYS
1	A	209	LYS
1	A	214	PHE
1	A	228	SER
1	A	269	VAL
1	A	272	CYS
1	A	308	CYS
1	A	309	SER
1	A	312	SER
1	A	349	ILE
1	A	382	THR
1	A	385	MET
1	A	386	ASN
1	A	392	ARG
1	A	396	GLU
1	B	34	ASP
1	B	44	LYS
1	B	55	LEU
1	B	58	ARG
1	B	66	SER
1	B	80	ARG
1	B	106	ASN
1	B	107	ILE
1	B	116	LYS
1	B	135	LYS
1	B	141	LYS
1	B	149	ASP
1	B	191	GLN
1	B	209	LYS
1	B	211	LEU
1	B	214	PHE
1	B	217	ILE
1	B	222	ASN
1	B	224	LYS

Continued on next page...

Continued from previous page...

Mol	Chain	Res	Type
1	B	237	TRP
1	B	245	ASP
1	B	269	VAL
1	B	272	CYS
1	B	308	CYS
1	B	309	SER
1	B	312	SER
1	B	349	ILE
1	B	383	ASP
1	B	384	LEU
1	B	386	ASN
1	B	387	PHE
1	B	392	ARG

Sometimes sidechains can be flipped to improve hydrogen bonding and reduce clashes. All (1) such sidechains are listed below:

Mol	Chain	Res	Type
1	B	386	ASN

5.3.3 RNA [i](#)

There are no RNA molecules in this entry.

5.4 Non-standard residues in protein, DNA, RNA chains [i](#)

There are no non-standard protein/DNA/RNA residues in this entry.

5.5 Carbohydrates [i](#)

There are no monosaccharides in this entry.

5.6 Ligand geometry [i](#)

5 ligands are modelled in this entry.

In the following table, the Counts columns list the number of bonds (or angles) for which Mogul statistics could be retrieved, the number of bonds (or angles) that are observed in the model and the number of bonds (or angles) that are defined in the Chemical Component Dictionary. The Link column lists molecule types, if any, to which the group is linked. The Z score for a bond

length (or angle) is the number of standard deviations the observed value is removed from the expected value. A bond length (or angle) with $|Z| > 2$ is considered an outlier worth inspection. RMSZ is the root-mean-square of all Z scores of the bond lengths (or angles).

Mol	Type	Chain	Res	Link	Bond lengths			Bond angles		
					Counts	RMSZ	# Z > 2	Counts	RMSZ	# Z > 2
4	ACY	B	503	-	3,3,3	0.65	0	3,3,3	1.09	0
2	HEM	A	501	3,1	41,50,50	1.45	5 (12%)	45,82,82	1.85	11 (24%)
3	HU6	A	502	2	20,21,21	1.39	3 (15%)	22,29,29	3.79	8 (36%)
3	HU6	B	502	2	20,21,21	1.37	3 (15%)	22,29,29	3.30	10 (45%)
2	HEM	B	501	3,1	41,50,50	1.45	5 (12%)	45,82,82	2.06	16 (35%)

In the following table, the Chirals column lists the number of chiral outliers, the number of chiral centers analysed, the number of these observed in the model and the number defined in the Chemical Component Dictionary. Similar counts are reported in the Torsion and Rings columns. '-' means no outliers of that kind were identified.

Mol	Type	Chain	Res	Link	Chirals	Torsions	Rings
2	HEM	B	501	3,1	-	7/12/54/54	-
3	HU6	B	502	2	-	3/5/16/16	0/3/3/3
2	HEM	A	501	3,1	-	6/12/54/54	-
3	HU6	A	502	2	-	4/5/16/16	0/3/3/3

All (16) bond length outliers are listed below:

Mol	Chain	Res	Type	Atoms	Z	Observed(Å)	Ideal(Å)
2	B	501	HEM	C3C-C2C	-4.23	1.34	1.40
2	A	501	HEM	C3C-C2C	-3.70	1.35	1.40
3	A	502	HU6	C06-N07	3.46	1.44	1.36
3	B	502	HU6	C06-N07	3.46	1.44	1.36
2	A	501	HEM	C3C-CAC	3.03	1.54	1.47
2	A	501	HEM	CMB-C2B	2.74	1.56	1.50
2	B	501	HEM	CAA-C2A	2.65	1.55	1.52
2	A	501	HEM	O2D-CGD	-2.64	1.21	1.30
2	B	501	HEM	FE-ND	-2.51	1.84	1.96
3	A	502	HU6	C16-C06	-2.50	1.34	1.38
3	A	502	HU6	C08-N07	-2.46	1.40	1.45
2	A	501	HEM	CAA-C2A	2.27	1.55	1.52
2	B	501	HEM	CMB-C2B	2.21	1.55	1.50
3	B	502	HU6	C03-C04	-2.18	1.38	1.41
2	B	501	HEM	FE-NB	2.09	2.07	1.96
3	B	502	HU6	C08-N07	-2.09	1.40	1.45

All (45) bond angle outliers are listed below:

Mol	Chain	Res	Type	Atoms	Z	Observed(°)	Ideal(°)
3	A	502	HU6	C05-C06-N07	11.38	132.94	119.66
3	B	502	HU6	C05-C06-N07	9.44	130.68	119.66
3	A	502	HU6	C16-C06-N07	-8.79	107.65	121.59
3	B	502	HU6	C16-C06-N07	-7.33	109.96	121.59
3	A	502	HU6	BR1-C02-C16	-6.62	110.06	119.27
3	B	502	HU6	BR1-C02-C16	-5.53	111.58	119.27
2	A	501	HEM	C2C-C3C-C4C	4.67	110.16	106.90
2	B	501	HEM	CMA-C3A-C4A	-4.45	121.63	128.46
2	A	501	HEM	C4B-C3B-C2B	4.36	110.58	107.11
2	A	501	HEM	CHC-C4B-NB	4.33	129.14	124.43
3	B	502	HU6	C15-C09-C10	4.21	119.50	108.91
2	B	501	HEM	CMC-C2C-C3C	4.15	132.44	124.68
3	A	502	HU6	BR1-C02-C03	4.10	125.74	119.72
2	B	501	HEM	CMB-C2B-C1B	-3.86	119.17	125.04
2	B	501	HEM	CAA-CBA-CGA	-3.76	103.23	113.76
2	B	501	HEM	C2C-C3C-C4C	3.71	109.49	106.90
2	A	501	HEM	CAD-CBD-CGD	-3.52	106.03	113.60
2	A	501	HEM	C4C-CHD-C1D	3.50	127.18	122.56
3	A	502	HU6	C14-C15-C09	3.29	117.54	111.93
2	B	501	HEM	O1A-CGA-CBA	-3.23	112.69	123.08
3	A	502	HU6	C15-C09-C10	3.22	117.02	108.91
2	B	501	HEM	CBD-CAD-C3D	2.89	120.66	112.63
3	B	502	HU6	C14-C15-C09	2.87	116.83	111.93
2	B	501	HEM	CMB-C2B-C3B	2.82	135.20	128.30
3	A	502	HU6	C13-C14-C15	2.68	116.88	111.42
2	A	501	HEM	CMC-C2C-C3C	2.67	129.67	124.68
2	B	501	HEM	C4A-C3A-C2A	2.62	108.82	107.00
3	B	502	HU6	C13-C14-C15	2.56	116.63	111.42
2	B	501	HEM	CHC-C4B-NB	2.56	127.21	124.43
3	B	502	HU6	BR1-C02-C03	2.51	123.41	119.72
3	B	502	HU6	C09-C08-N07	-2.50	108.04	112.09
2	B	501	HEM	CHB-C1B-NB	2.43	127.39	124.38
2	B	501	HEM	CMA-C3A-C2A	2.41	129.48	124.94
2	A	501	HEM	C3B-C2B-C1B	-2.40	104.70	106.49
2	B	501	HEM	C4C-CHD-C1D	2.36	125.68	122.56
2	A	501	HEM	C1D-C2D-C3D	2.36	109.44	106.96
2	A	501	HEM	CMD-C2D-C1D	-2.34	121.47	125.04
2	A	501	HEM	CAA-CBA-CGA	-2.27	107.39	113.76
2	B	501	HEM	O2A-CGA-CBA	2.25	121.27	114.03
2	B	501	HEM	CAD-C3D-C2D	2.25	132.07	127.88
2	A	501	HEM	CHB-C1B-NB	2.18	127.07	124.38
2	B	501	HEM	C4B-C3B-C2B	2.15	108.82	107.11

Continued on next page...

Continued from previous page...

Mol	Chain	Res	Type	Atoms	Z	Observed(°)	Ideal(°)
3	B	502	HU6	O11-C10-C09	-2.13	102.95	109.91
3	B	502	HU6	C03-C04-C05	-2.11	118.44	121.16
3	A	502	HU6	C13-C12-C10	-2.10	107.62	111.47

There are no chirality outliers.

All (20) torsion outliers are listed below:

Mol	Chain	Res	Type	Atoms
2	B	501	HEM	C1A-C2A-CAA-CBA
2	B	501	HEM	C3A-C2A-CAA-CBA
3	A	502	HU6	C16-C06-N07-C08
3	A	502	HU6	C05-C06-N07-C08
3	A	502	HU6	N07-C08-C09-C15
3	B	502	HU6	C16-C06-N07-C08
3	B	502	HU6	C05-C06-N07-C08
2	B	501	HEM	C3D-CAD-CBD-CGD
2	A	501	HEM	C4D-C3D-CAD-CBD
2	A	501	HEM	C2D-C3D-CAD-CBD
2	A	501	HEM	CAA-CBA-CGA-O1A
2	A	501	HEM	CAD-CBD-CGD-O1D
2	B	501	HEM	CAD-CBD-CGD-O1D
2	A	501	HEM	CAA-CBA-CGA-O2A
3	A	502	HU6	C09-C08-N07-C06
3	B	502	HU6	C09-C08-N07-C06
2	B	501	HEM	CAD-CBD-CGD-O2D
2	A	501	HEM	CAD-CBD-CGD-O2D
2	B	501	HEM	CAA-CBA-CGA-O2A
2	B	501	HEM	CAA-CBA-CGA-O1A

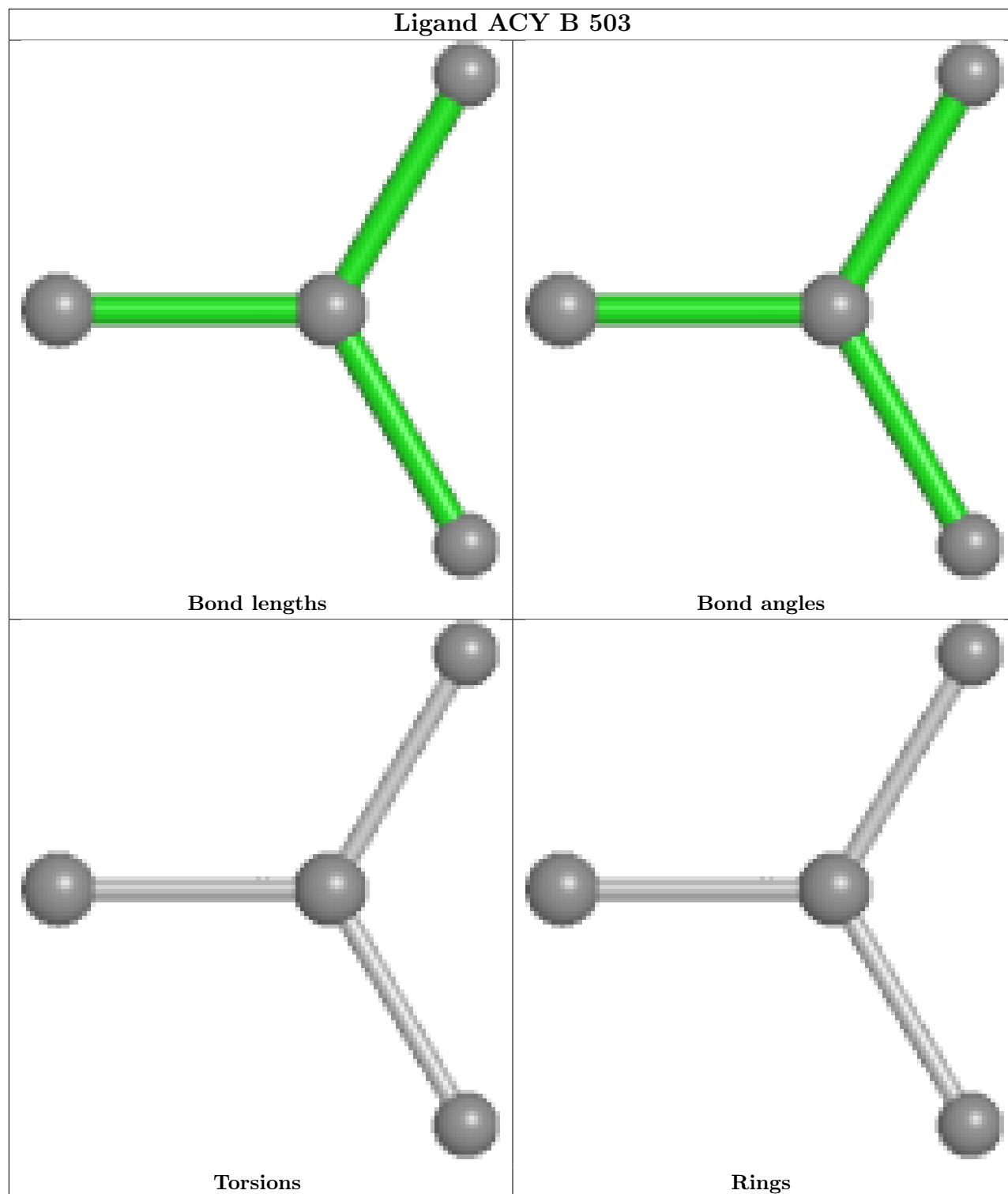
There are no ring outliers.

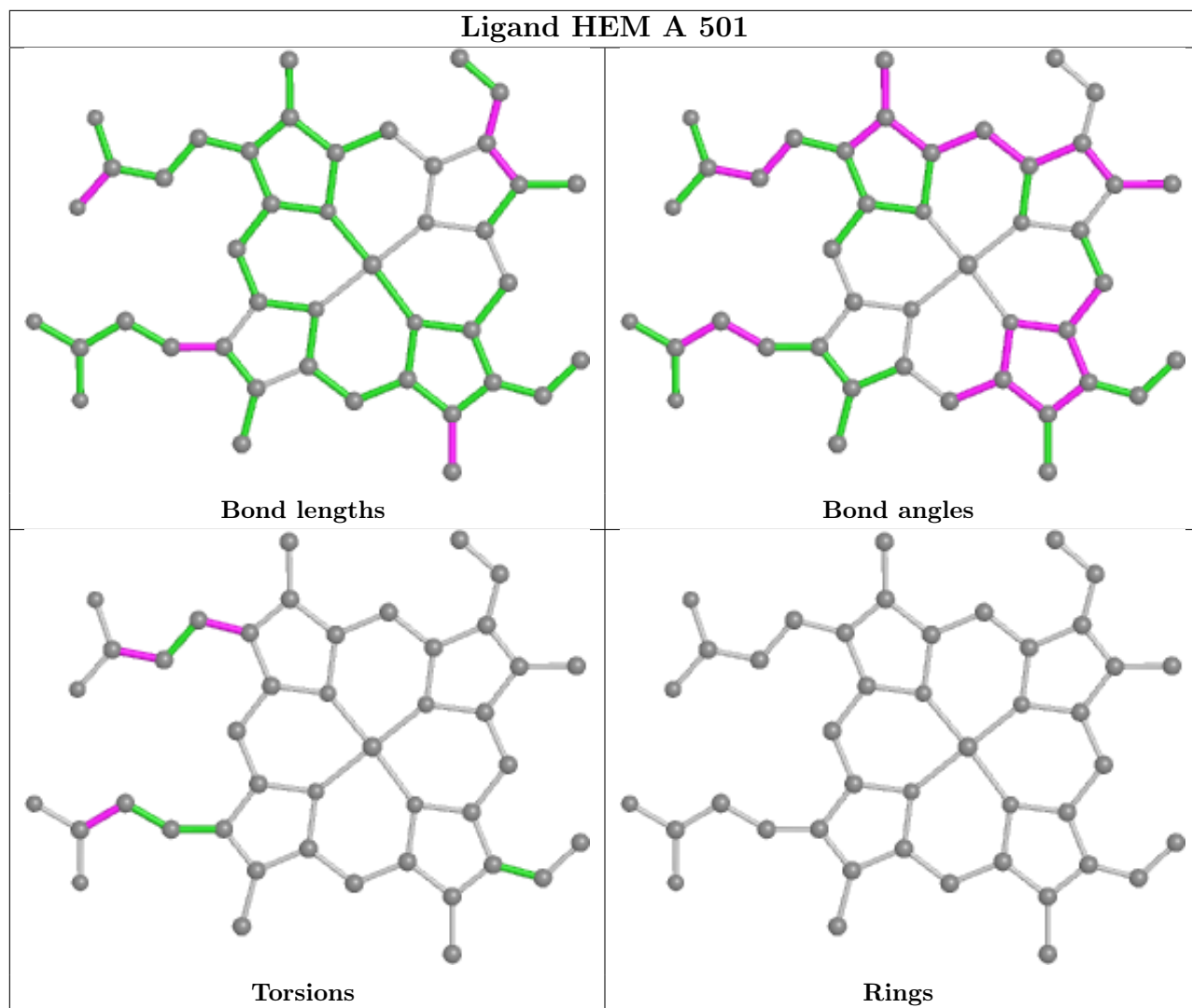
4 monomers are involved in 18 short contacts:

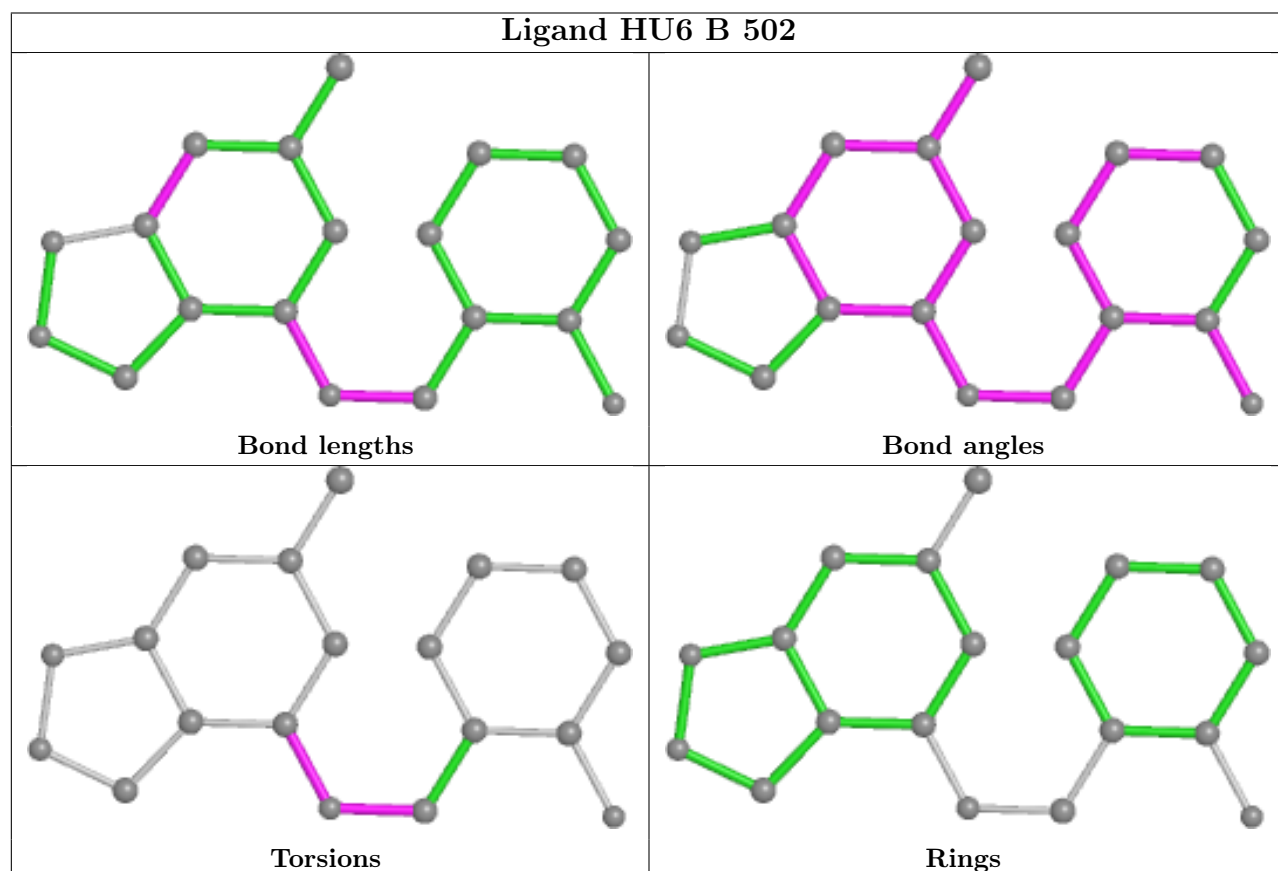
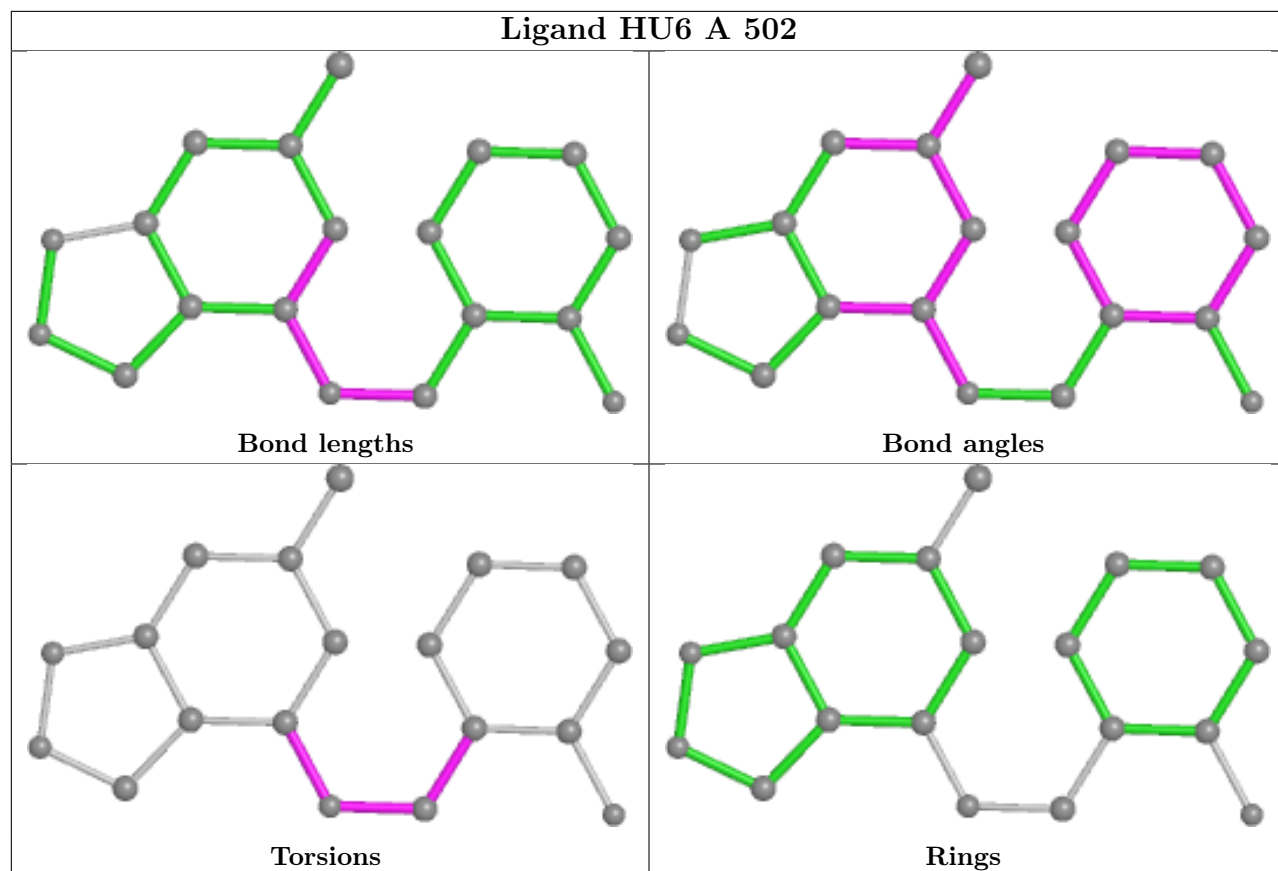
Mol	Chain	Res	Type	Clashes	Symm-Clashes
2	A	501	HEM	9	0
3	A	502	HU6	2	0
3	B	502	HU6	1	0
2	B	501	HEM	8	0

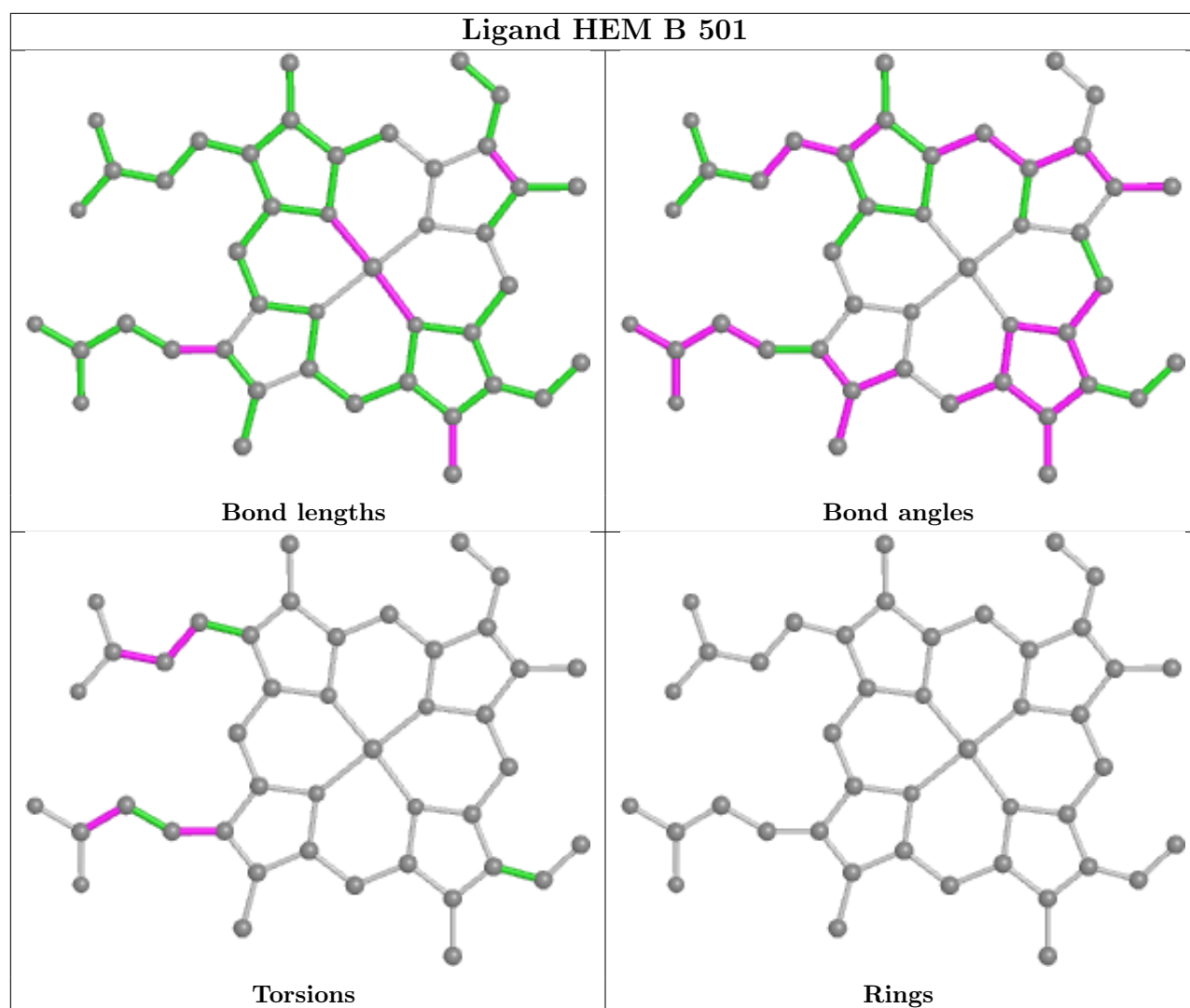
The following is a two-dimensional graphical depiction of Mogul quality analysis of bond lengths, bond angles, torsion angles, and ring geometry for all instances of the Ligand of Interest. In addition, ligands with molecular weight > 250 and outliers as shown on the validation Tables will

also be included. For torsion angles, if less than 5% of the Mogul distribution of torsion angles is within 10 degrees of the torsion angle in question, then that torsion angle is considered an outlier. Any bond that is central to one or more torsion angles identified as an outlier by Mogul will be highlighted in the graph. For rings, the root-mean-square deviation (RMSD) between the ring in question and similar rings identified by Mogul is calculated over all ring torsion angles. If the average RMSD is greater than 60 degrees and the minimal RMSD between the ring in question and any Mogul-identified rings is also greater than 60 degrees, then that ring is considered an outlier. The outliers are highlighted in purple. The color gray indicates Mogul did not find sufficient equivalents in the CSD to analyse the geometry.









5.7 Other polymers [i](#)

There are no such residues in this entry.

5.8 Polymer linkage issues [i](#)

There are no chain breaks in this entry.

6 Fit of model and data [i](#)

6.1 Protein, DNA and RNA chains [i](#)

In the following table, the column labelled ‘#RSRZ > 2’ contains the number (and percentage) of RSRZ outliers, followed by percent RSRZ outliers for the chain as percentile scores relative to all X-ray entries and entries of similar resolution. The OWAB column contains the minimum, median, 95th percentile and maximum values of the occupancy-weighted average B-factor per residue. The column labelled ‘Q < 0.9’ lists the number of (and percentage) of residues with an average occupancy less than 0.9.

Mol	Chain	Analysed	<RSRZ>	#RSRZ>2	OWAB(Å ²)	Q<0.9
1	A	373/392 (95%)	0.20	7 (1%) 66 69	43, 60, 84, 109	0
1	B	373/392 (95%)	0.12	8 (2%) 63 65	35, 59, 90, 120	0
All	All	746/784 (95%)	0.16	15 (2%) 65 67	35, 60, 86, 120	0

All (15) RSRZ outliers are listed below:

Mol	Chain	Res	Type	RSRZ
1	A	402	GLU	6.1
1	A	381	GLY	5.9
1	B	362	PRO	5.2
1	B	12	SER	3.9
1	B	361	GLN	3.6
1	B	228	SER	3.2
1	A	362	PRO	2.9
1	B	359	SER	2.8
1	B	353	TYR	2.5
1	A	149	ASP	2.4
1	A	148	MET	2.3
1	B	287	HIS	2.2
1	B	358	ALA	2.1
1	A	401	LYS	2.1
1	A	163	PHE	2.0

6.2 Non-standard residues in protein, DNA, RNA chains [i](#)

There are no non-standard protein/DNA/RNA residues in this entry.

6.3 Carbohydrates [i](#)

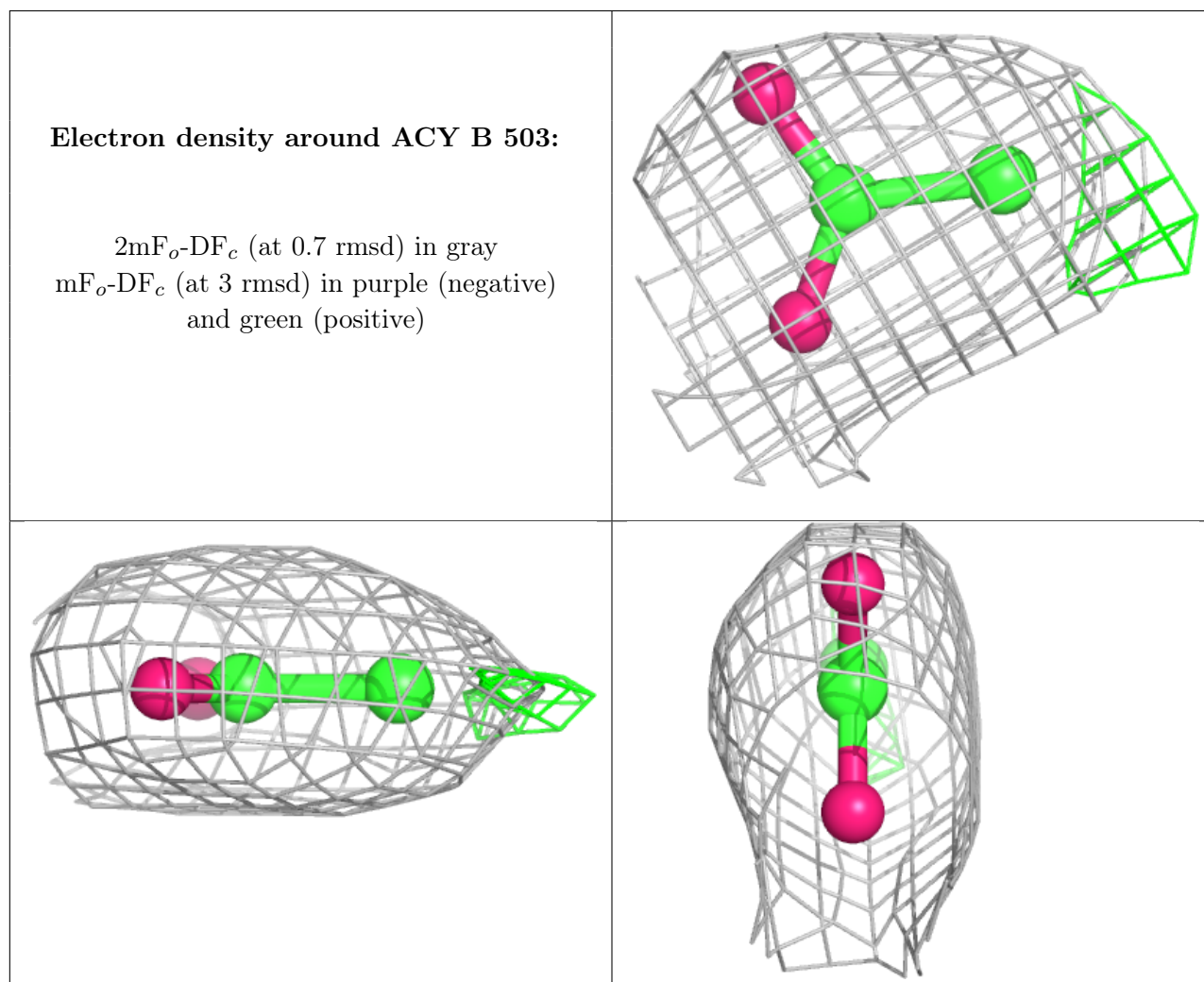
There are no monosaccharides in this entry.

6.4 Ligands [i](#)

In the following table, the Atoms column lists the number of modelled atoms in the group and the number defined in the chemical component dictionary. The B-factors column lists the minimum, median, 95th percentile and maximum values of B factors of atoms in the group. The column labelled 'Q< 0.9' lists the number of atoms with occupancy less than 0.9.

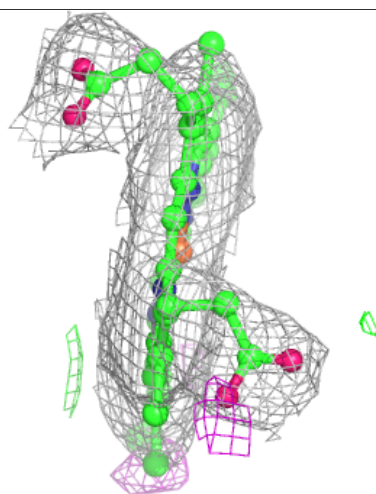
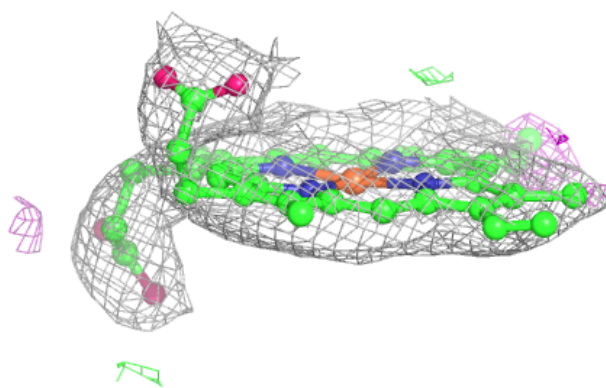
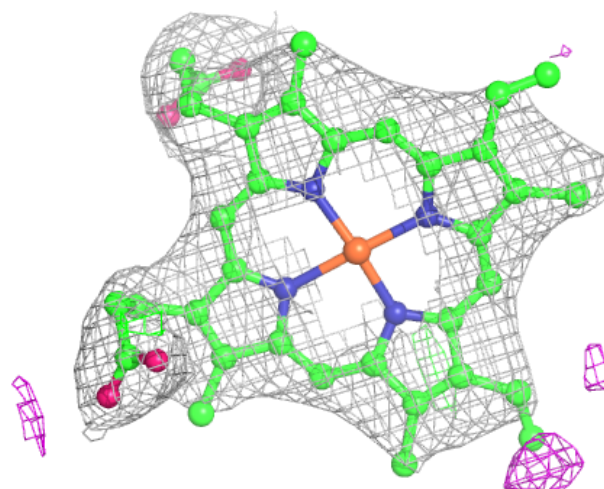
Mol	Type	Chain	Res	Atoms	RSCC	RSR	B-factors(Å ²)	Q<0.9
4	ACY	B	503	4/4	0.88	0.22	43,79,79,82	0
2	HEM	A	501	43/43	0.97	0.21	42,50,70,75	0
3	HU6	A	502	19/19	0.98	0.15	40,50,65,66	0
3	HU6	B	502	19/19	0.98	0.18	42,59,77,78	0
2	HEM	B	501	43/43	0.98	0.22	34,47,67,73	0

The following is a graphical depiction of the model fit to experimental electron density of all instances of the Ligand of Interest. In addition, ligands with molecular weight > 250 and outliers as shown on the geometry validation Tables will also be included. Each fit is shown from different orientation to approximate a three-dimensional view.



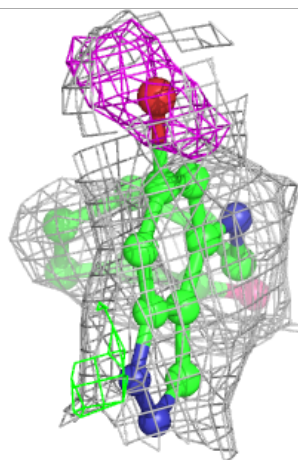
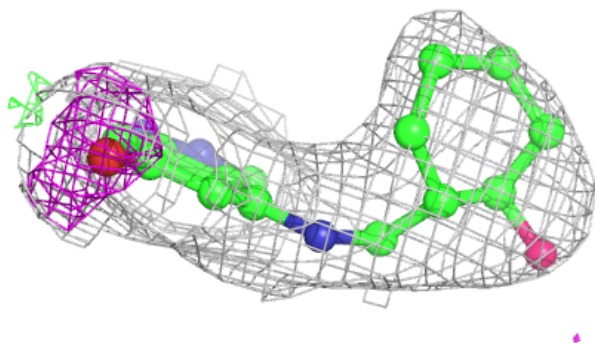
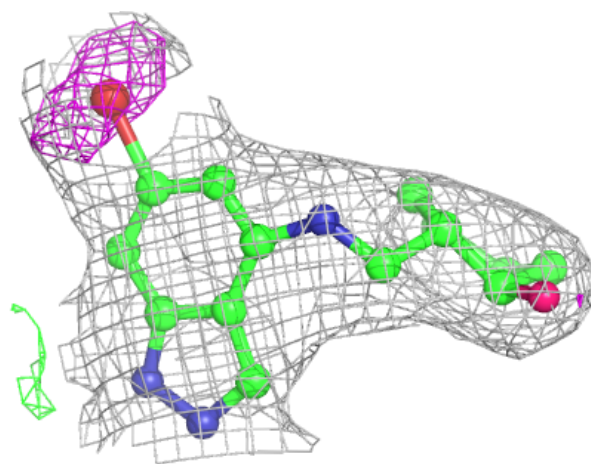
Electron density around HEM A 501:

$2mF_o-DF_c$ (at 0.7 rmsd) in gray
 mF_o-DF_c (at 3 rmsd) in purple (negative)
and green (positive)



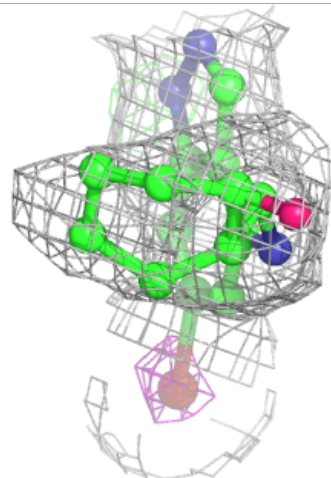
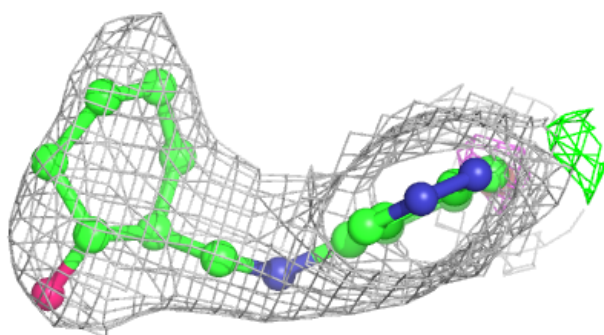
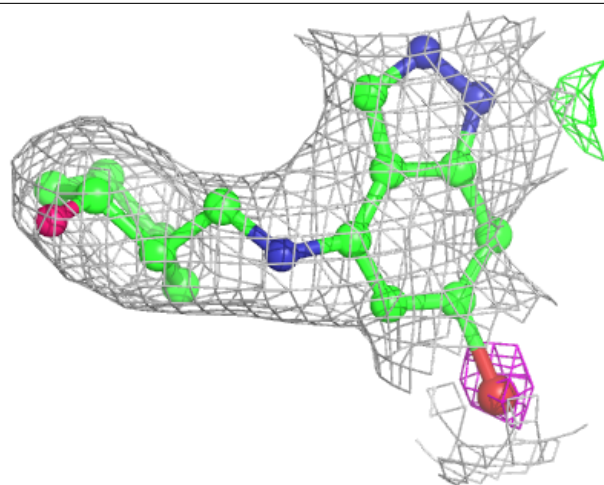
Electron density around HU6 A 502:

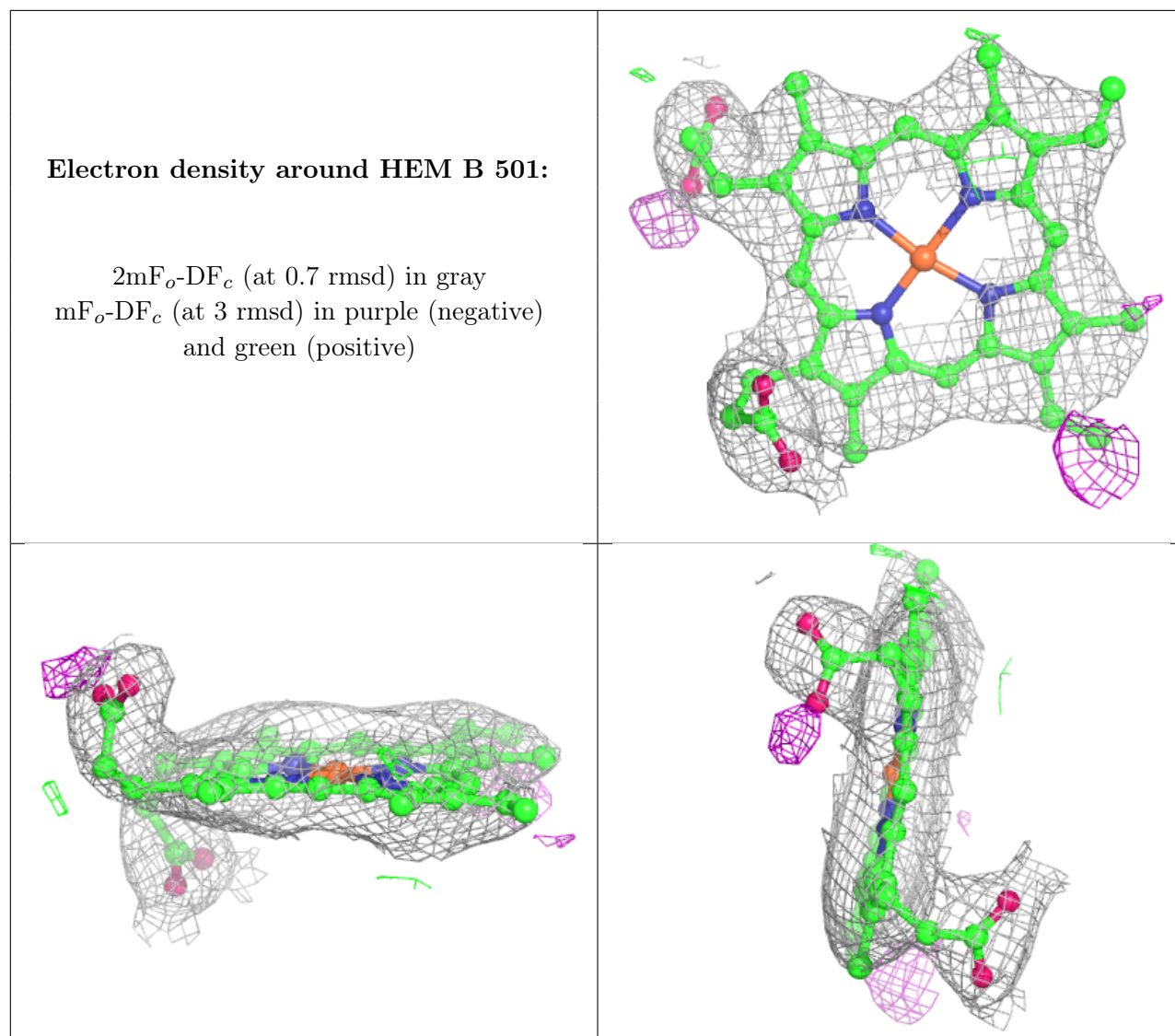
$2mF_o-DF_c$ (at 0.7 rmsd) in gray
 mF_o-DF_c (at 3 rmsd) in purple (negative)
and green (positive)



Electron density around HU6 B 502:

$2mF_o-DF_c$ (at 0.7 rmsd) in gray
 mF_o-DF_c (at 3 rmsd) in purple (negative)
and green (positive)





6.5 Other polymers [i](#)

There are no such residues in this entry.