



Full wwPDB X-ray Structure Validation Report ⓘ

Mar 9, 2018 – 06:48 am GMT

PDB ID : 5E29
Title : Crystal Structure of Deoxygenated Hemoglobin in Complex with an Allosteric Effector and Nitric Oxide
Authors : Safo, M.K.; Deshpande, T.M.
Deposited on : 2015-09-30
Resolution : 1.85 Å(reported)

This is a Full wwPDB X-ray Structure Validation Report for a publicly released PDB entry.

We welcome your comments at validation@mail.wwpdb.org

A user guide is available at

<https://www.wwpdb.org/validation/2017/XrayValidationReportHelp>

with specific help available everywhere you see the ⓘ symbol.

The following versions of software and data (see [references ⓘ](#)) were used in the production of this report:

MolProbity : 4.02b-467
Mogul : 1.7.3 (157068), CSD as539be (2018)
Xtriage (Phenix) : 1.13
EDS : trunk30967
Percentile statistics : 20171227.v01 (using entries in the PDB archive December 27th 2017)
Refmac : 5.8.0158
CCP4 : 7.0 (Gargrove)
Ideal geometry (proteins) : Engh & Huber (2001)
Ideal geometry (DNA, RNA) : Parkinson et al. (1996)
Validation Pipeline (wwPDB-VP) : trunk30967

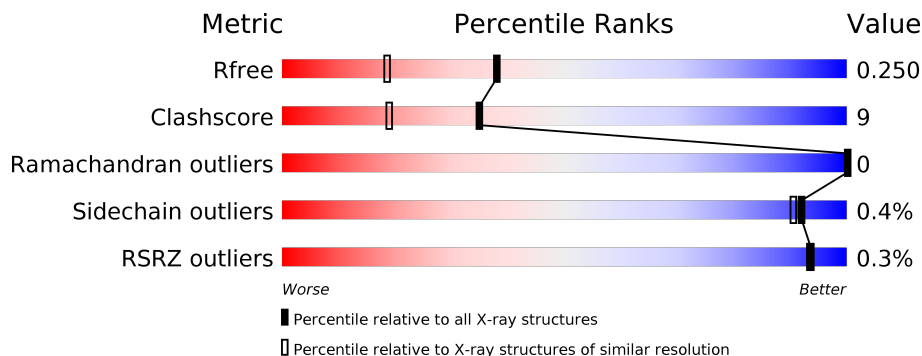
1 Overall quality at a glance

The following experimental techniques were used to determine the structure:

X-RAY DIFFRACTION

The reported resolution of this entry is 1.85 Å.

Percentile scores (ranging between 0-100) for global validation metrics of the entry are shown in the following graphic. The table shows the number of entries on which the scores are based.



Metric	Whole archive (#Entries)	Similar resolution (#Entries, resolution range(Å))
R_{free}	111664	2111 (1.86-1.86)
Clashscore	122126	2258 (1.86-1.86)
Ramachandran outliers	120053	2234 (1.86-1.86)
Sidechain outliers	120020	2234 (1.86-1.86)
RSRZ outliers	108989	2075 (1.86-1.86)

The table below summarises the geometric issues observed across the polymeric chains and their fit to the electron density. The red, orange, yellow and green segments on the lower bar indicate the fraction of residues that contain outliers for ≥ 3 , 2, 1 and 0 types of geometric quality criteria. A grey segment represents the fraction of residues that are not modelled. The numeric value for each fraction is indicated below the corresponding segment, with a dot representing fractions $\leq 5\%$. The upper red bar (where present) indicates the fraction of residues that have poor fit to the electron density. The numeric value is given above the bar.

Mol	Chain	Length	Quality of chain
1	A	141	
1	C	141	
2	B	145	
2	D	145	

2 Entry composition [i](#)

There are 9 unique types of molecules in this entry. The entry contains 5613 atoms, of which 0 are hydrogens and 0 are deuteriums.

In the tables below, the ZeroOcc column contains the number of atoms modelled with zero occupancy, the AltConf column contains the number of residues with at least one atom in alternate conformation and the Trace column contains the number of residues modelled with at most 2 atoms.

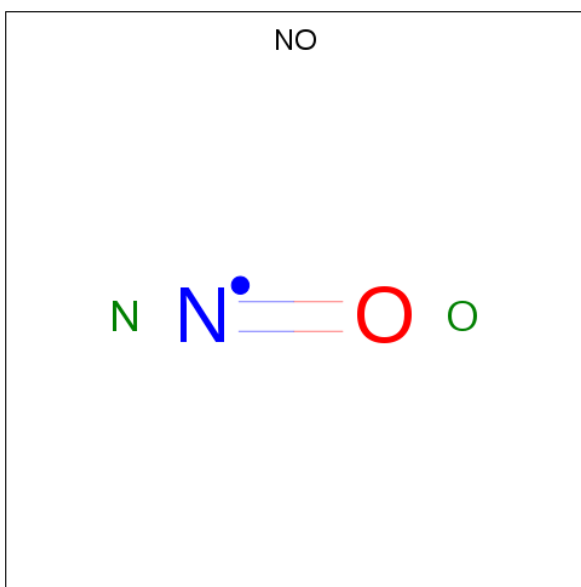
- Molecule 1 is a protein called Hemoglobin subunit alpha.

Mol	Chain	Residues	Atoms					ZeroOcc	AltConf	Trace
			Total	C	N	O	S			
1	A	141	1069	685	187	194	3	0	0	0
1	C	141	1069	685	187	194	3	0	0	0

- Molecule 2 is a protein called Hemoglobin subunit beta.

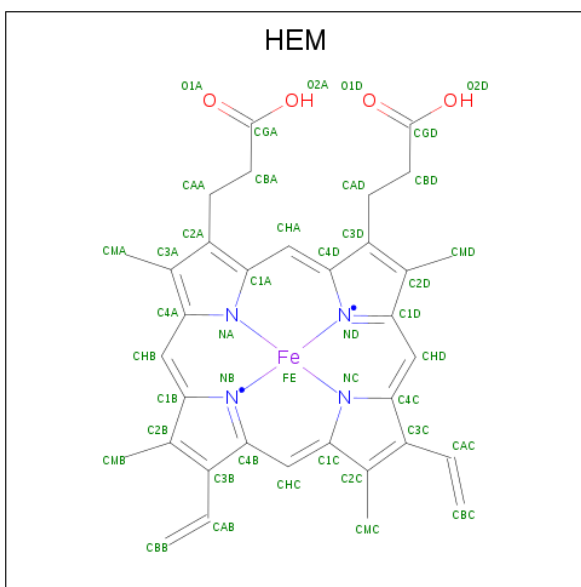
Mol	Chain	Residues	Atoms					ZeroOcc	AltConf	Trace
			Total	C	N	O	S			
2	B	145	1116	719	194	200	3	0	0	0
2	D	145	1116	719	194	200	3	0	0	0

- Molecule 3 is NITRIC OXIDE (three-letter code: NO) (formula: NO).



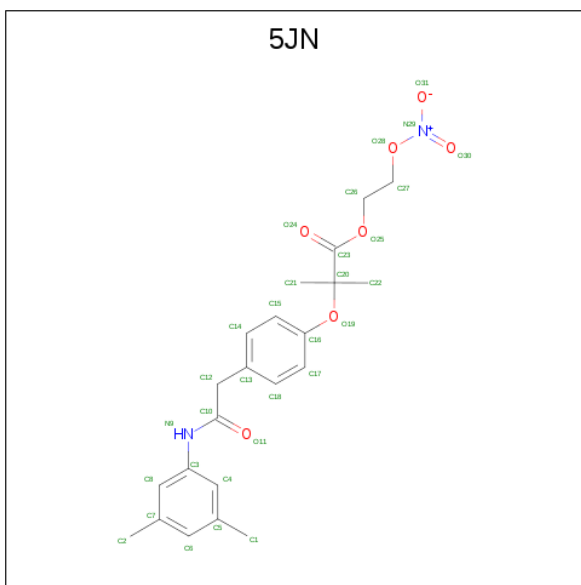
Mol	Chain	Residues	Atoms			ZeroOcc	AltConf
3	A	1	Total	N	O	0	0
			2	1	1		
3	C	1	Total	N	O	0	0
			2	1	1		

- Molecule 4 is PROTOPORPHYRIN IX CONTAINING FE (three-letter code: HEM) (formula: $C_{34}H_{32}FeN_4O_4$).



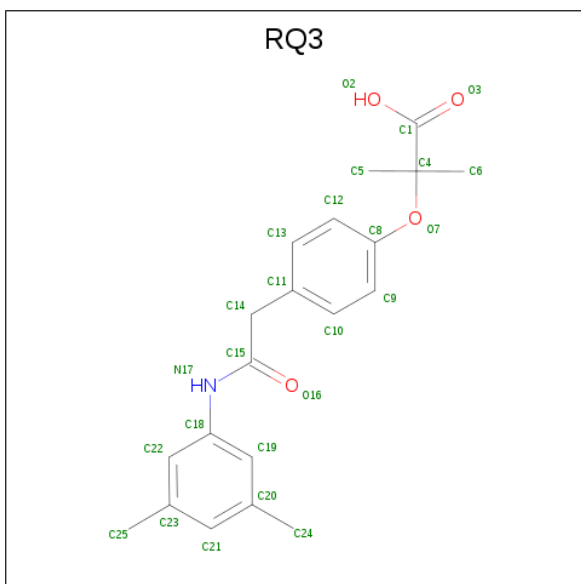
Mol	Chain	Residues	Atoms				ZeroOcc	AltConf	
4	A	1	Total	C	Fe	N	O	0	0
			43	34	1	4	4		
4	B	1	Total	C	Fe	N	O	0	0
			43	34	1	4	4		
4	C	1	Total	C	Fe	N	O	0	0
			43	34	1	4	4		
4	D	1	Total	C	Fe	N	O	0	0
			43	34	1	4	4		

- Molecule 5 is 2-(nitrooxy)ethyl 2-(4-{2-[(3,5-dimethylphenyl)amino]-2-oxoethyl}phenoxy)-2-methylpropanoate (three-letter code: 5JN) (formula: $C_{22}H_{26}N_2O_7$).



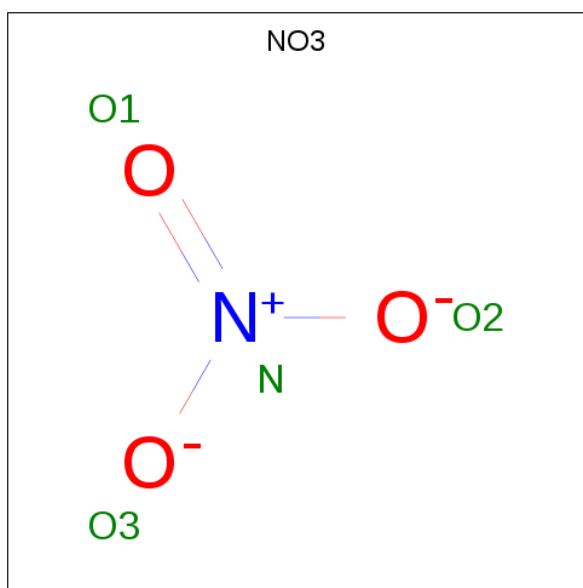
Mol	Chain	Residues	Atoms				ZeroOcc	AltConf
			Total	C	N	O		
5	A	1	31	22	2	7	0	1

- Molecule 6 is 2-{4-[(3,5-DIMETHYLANILINO)-CARBONYL-METHYL]-PHENOXY}-2-METHYLPROPIONIC ACID (three-letter code: RQ3) (formula: $C_{20}H_{23}NO_4$).



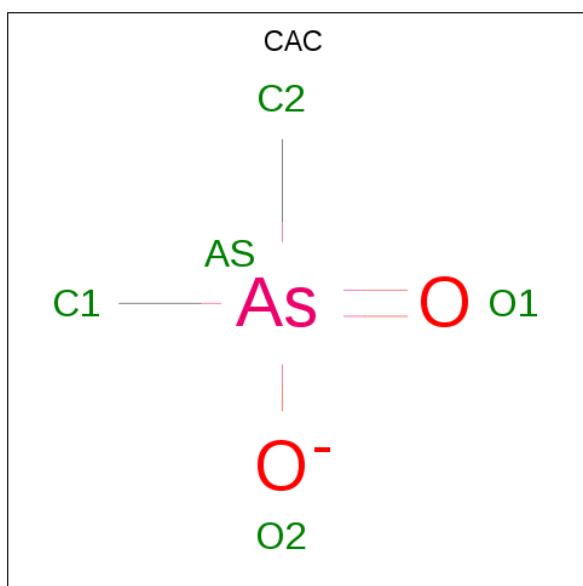
Mol	Chain	Residues	Atoms				ZeroOcc	AltConf
			Total	C	N	O		
6	A	1	25	20	1	4	0	0
6	B	1	25	20	1	4	0	1

- Molecule 7 is NITRATE ION (three-letter code: NO3) (formula: NO₃).



Mol	Chain	Residues	Atoms			ZeroOcc	AltConf
7	B	1	Total	N	O	0	0
			4	1	3		
7	D	1	Total	N	O	0	0
			4	1	3		

- Molecule 8 is CACODYLATE ION (three-letter code: CAC) (formula: C₂H₆AsO₂).



Mol	Chain	Residues	Atoms				ZeroOcc	AltConf
8	D	1	Total	As	C	O	0	0
			5	1	2	2		


- Molecule 9 is water.

Mol	Chain	Residues	Atoms	ZeroOcc	AltConf
9	A	221	Total O 221 221	0	0
9	B	220	Total O 220 220	0	0
9	C	262	Total O 262 262	0	0
9	D	270	Total O 270 270	0	0

3 Residue-property plots [i](#)

These plots are drawn for all protein, RNA and DNA chains in the entry. The first graphic for a chain summarises the proportions of the various outlier classes displayed in the second graphic. The second graphic shows the sequence view annotated by issues in geometry and electron density. Residues are color-coded according to the number of geometric quality criteria for which they contain at least one outlier: green = 0, yellow = 1, orange = 2 and red = 3 or more. A red dot above a residue indicates a poor fit to the electron density ($RSRZ > 2$). Stretches of 2 or more consecutive residues without any outlier are shown as a green connector. Residues present in the sample, but not in the model, are shown in grey.

- Molecule 1: Hemoglobin subunit alpha

Chain A:  90% 10%




- Molecule 1: Hemoglobin subunit alpha

Chain C:  86% 14%




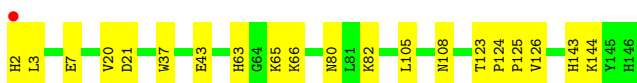
- Molecule 2: Hemoglobin subunit beta

Chain B:  % 75% 24%



- Molecule 2: Hemoglobin subunit beta

Chain D:  % 86% 14%



4 Data and refinement statistics

Property	Value	Source
Space group	P 21 21 2	Depositor
Cell constants a, b, c, α , β , γ	95.88Å 98.42Å 65.44Å 90.00° 90.00° 90.00°	Depositor
Resolution (Å)	29.54 – 1.85 29.54 – 1.85	Depositor EDS
% Data completeness (in resolution range)	98.1 (29.54-1.85) 98.2 (29.54-1.85)	Depositor EDS
R_{merge}	0.08	Depositor
R_{sym}	(Not available)	Depositor
$\langle I/\sigma(I) \rangle$ ¹	3.96 (at 1.85Å)	Xtrriage
Refinement program	CNS	Depositor
R, R_{free}	0.198 , 0.253 0.194 , 0.250	Depositor DCC
R_{free} test set	2669 reflections (5.07%)	wwPDB-VP
Wilson B-factor (Å ²)	18.5	Xtrriage
Anisotropy	0.150	Xtrriage
Bulk solvent k_{sol} (e/Å ³), B_{sol} (Å ²)	0.30 , 60.4	EDS
L-test for twinning ²	$\langle L \rangle = 0.38$, $\langle L^2 \rangle = 0.21$	Xtrriage
Estimated twinning fraction	0.045 for k,h,-l	Xtrriage
F_o, F_c correlation	0.95	EDS
Total number of atoms	5613	wwPDB-VP
Average B, all atoms (Å ²)	25.0	wwPDB-VP

Xtrriage's analysis on translational NCS is as follows: *The largest off-origin peak in the Patterson function is 6.51% of the height of the origin peak. No significant pseudotranslation is detected.*

¹Intensities estimated from amplitudes.

²Theoretical values of $\langle |L| \rangle$, $\langle L^2 \rangle$ for acentric reflections are 0.5, 0.333 respectively for untwinned datasets, and 0.375, 0.2 for perfectly twinned datasets.

5 Model quality [i](#)

5.1 Standard geometry [i](#)

Bond lengths and bond angles in the following residue types are not validated in this section: RQ3, NO, 5JN, CAC, HEM, NO3

The Z score for a bond length (or angle) is the number of standard deviations the observed value is removed from the expected value. A bond length (or angle) with $|Z| > 5$ is considered an outlier worth inspection. RMSZ is the root-mean-square of all Z scores of the bond lengths (or angles).

Mol	Chain	Bond lengths		Bond angles	
		RMSZ	# Z >5	RMSZ	# Z >5
1	A	0.39	0/1097	0.56	0/1491
1	C	0.42	0/1097	0.59	0/1491
2	B	0.40	0/1146	0.57	0/1556
2	D	0.44	0/1146	0.59	0/1556
All	All	0.41	0/4486	0.58	0/6094

There are no bond length outliers.

There are no bond angle outliers.

There are no chirality outliers.

There are no planarity outliers.

5.2 Too-close contacts [i](#)

In the following table, the Non-H and H(model) columns list the number of non-hydrogen atoms and hydrogen atoms in the chain respectively. The H(added) column lists the number of hydrogen atoms added and optimized by MolProbity. The Clashes column lists the number of clashes within the asymmetric unit, whereas Symm-Clashes lists symmetry related clashes.

Mol	Chain	Non-H	H(model)	H(added)	Clashes	Symm-Clashes
1	A	1069	0	1073	11	0
1	C	1069	0	1073	18	0
2	B	1116	0	1106	36	0
2	D	1116	0	1106	18	0
3	A	2	0	0	0	0
3	C	2	0	0	0	0
4	A	43	0	30	0	0
4	B	43	0	30	3	0
4	C	43	0	30	0	0

Continued on next page...

Continued from previous page...

Mol	Chain	Non-H	H(model)	H(added)	Clashes	Symm-Clashes
4	D	43	0	30	2	0
5	A	31	0	19	2	0
6	A	25	0	22	0	0
6	B	25	0	17	1	0
7	B	4	0	0	1	0
7	D	4	0	0	0	0
8	D	5	0	0	1	0
9	A	221	0	0	2	0
9	B	220	0	0	11	0
9	C	262	0	0	8	0
9	D	270	0	0	8	0
All	All	5613	0	4536	82	0

The all-atom clashscore is defined as the number of clashes found per 1000 atoms (including hydrogen atoms). The all-atom clashscore for this structure is 9.

All (82) close contacts within the same asymmetric unit are listed below, sorted by their clash magnitude.

Atom-1	Atom-2	Interatomic distance (Å)	Clash overlap (Å)
2:B:13:ALA:HB3	9:B:301:HOH:O	1.58	1.03
1:C:56:LYS:HE2	9:C:476:HOH:O	1.82	0.79
2:B:143:HIS:HD2	2:B:144:LYS:NZ	1.82	0.76
2:B:43:GLU:HG3	9:B:305:HOH:O	1.88	0.74
2:B:97:HIS:NE2	7:B:203:NO3:O2	2.21	0.74
1:C:7:LYS:O	1:C:11:LYS:HG3	1.90	0.72
1:C:113:LEU:HB3	1:C:116:GLU:HG2	1.73	0.71
2:D:66:LYS:HD3	4:D:201:HEM:HAA2	1.73	0.69
1:C:16:LYS:HD3	9:C:523:HOH:O	1.94	0.67
2:D:65:LYS:HE2	9:D:478:HOH:O	1.96	0.65
2:B:37:TRP:HB2	1:C:92:ARG:HB3	1.80	0.63
1:C:96:VAL:HB	9:C:420:HOH:O	1.98	0.62
2:D:2:HIS:CD2	2:D:3:LEU:H	2.16	0.62
1:C:6:ASP:O	1:C:10:VAL:HG13	2.01	0.61
2:B:10:ALA:HA	9:B:301:HOH:O	2.01	0.61
1:C:90:LYS:HG2	9:C:504:HOH:O	2.01	0.60
2:D:143:HIS:HD2	2:D:144:LYS:NZ	2.03	0.57
1:A:74:ASP:HB2	9:A:401:HOH:O	2.04	0.57
2:B:6:GLU:CD	2:B:6:GLU:H	2.06	0.57
2:B:19:ASN:HD22	2:B:19:ASN:C	2.08	0.57
2:D:2:HIS:HD2	2:D:3:LEU:H	1.52	0.56
2:B:143:HIS:HD2	2:B:144:LYS:HZ2	1.52	0.55

Continued on next page...

Continued from previous page...

Atom-1	Atom-2	Interatomic distance (Å)	Clash overlap (Å)
2:D:63:HIS:CE1	4:D:201:HEM:HBD2	2.42	0.55
2:B:6:GLU:HG3	9:B:422:HOH:O	2.07	0.55
2:B:80:ASN:ND2	2:B:83:GLY:H	2.05	0.54
2:B:75:LEU:HD21	2:B:133:VAL:HG11	1.88	0.54
2:B:53:ALA:O	2:B:57:ASN:HB2	2.08	0.53
2:D:123:THR:OG1	2:D:126:VAL:HG23	2.08	0.53
1:A:16:LYS:HE3	1:A:116:GLU:OE2	2.08	0.53
2:B:143:HIS:HD2	2:B:144:LYS:HZ1	1.55	0.53
2:D:80:ASN:HB2	9:D:433:HOH:O	2.08	0.53
2:D:3:LEU:HD22	2:D:7:GLU:HB3	1.91	0.53
1:C:42:TYR:C	1:C:44:PRO:HD3	2.28	0.52
2:B:117:HIS:HE1	9:B:342:HOH:O	1.93	0.52
2:B:120:LYS:HG3	9:B:451:HOH:O	2.13	0.49
2:B:143:HIS:CD2	2:B:144:LYS:NZ	2.71	0.49
2:B:143:HIS:CD2	2:B:144:LYS:HZ2	2.29	0.49
1:C:45:HIS:HB2	9:C:501:HOH:O	2.13	0.49
1:C:51:GLY:O	1:C:56:LYS:HE3	2.12	0.49
8:D:202:CAC:AS	9:D:310:HOH:O	2.90	0.49
1:A:131:SER:HA	5:A:203[A]:5JN:O30	2.13	0.48
1:C:88:ALA:HB2	9:C:389:HOH:O	2.12	0.48
2:D:82:LYS:HG2	9:D:424:HOH:O	2.13	0.48
2:B:66:LYS:HD3	4:B:201:HEM:HAA2	1.95	0.48
1:A:16:LYS:HG2	1:A:116:GLU:OE2	2.13	0.48
1:A:116:GLU:N	1:A:116:GLU:OE1	2.44	0.48
1:C:43:PHE:N	1:C:44:PRO:HD3	2.27	0.48
1:A:99:LYS:NZ	9:A:307:HOH:O	2.46	0.48
2:D:2:HIS:CD2	2:D:3:LEU:N	2.81	0.47
2:B:82:LYS:HE3	9:B:337:HOH:O	2.13	0.47
2:D:124:PRO:HB2	2:D:125:PRO:HD3	1.96	0.47
2:B:92:HIS:HA	2:B:96:LEU:HB2	1.97	0.47
1:A:21:ALA:HB1	1:A:63:ALA:HB1	1.97	0.46
2:B:101:GLU:HG2	1:C:94:ASP:OD2	2.15	0.46
1:A:76:MET:N	1:A:77:PRO:CD	2.79	0.46
2:B:43:GLU:HG2	9:B:365:HOH:O	2.15	0.46
1:A:94:ASP:OD2	1:A:96:VAL:HG22	2.17	0.45
1:A:51:GLY:O	1:A:56:LYS:HE3	2.17	0.45
1:C:94:ASP:OD2	1:C:96:VAL:HG13	2.16	0.44
2:B:104:ARG:HH22	2:B:139:ASN:ND2	2.16	0.43
2:B:80:ASN:HD21	2:B:83:GLY:H	1.66	0.43
2:B:15:TRP:CD2	2:B:75:LEU:HD12	2.54	0.42
2:B:77:HIS:N	2:B:77:HIS:CD2	2.86	0.42

Continued on next page...

Continued from previous page...

Atom-1	Atom-2	Interatomic distance (Å)	Clash overlap (Å)
2:B:143:HIS:CD2	2:B:144:LYS:HZ1	2.37	0.42
1:C:68:ASN:HB3	9:C:334:HOH:O	2.19	0.42
5:A:203[A]:5JN:H24	9:B:424:HOH:O	2.20	0.42
9:B:396:HOH:O	1:C:45:HIS:HD2	2.03	0.41
2:D:20:VAL:HG12	9:D:379:HOH:O	2.19	0.41
2:B:5:PRO:HD2	2:B:6:GLU:OE2	2.20	0.41
1:A:92:ARG:HB3	2:D:37:TRP:HB2	2.03	0.41
1:C:76:MET:HE3	9:C:407:HOH:O	2.21	0.41
2:B:124:PRO:HB2	2:B:125:PRO:HD3	2.02	0.41
2:D:21:ASP:HB3	2:D:65:LYS:HE3	2.02	0.41
2:B:37:TRP:CZ3	6:B:202[B]:RQ3:H61	2.55	0.41
2:D:105:LEU:HA	9:D:303:HOH:O	2.21	0.41
2:B:25:GLY:HA3	9:B:378:HOH:O	2.20	0.41
2:B:99:ASP:HA	2:B:100:PRO:HD3	1.94	0.41
2:D:108:ASN:ND2	9:D:303:HOH:O	2.37	0.40
2:B:45:PHE:HA	2:B:59:LYS:HD2	2.03	0.40
2:D:43:GLU:HB2	9:D:418:HOH:O	2.20	0.40
2:B:67:VAL:HG13	4:B:201:HEM:C2B	2.55	0.40
2:B:67:VAL:HG13	4:B:201:HEM:C1B	2.56	0.40

There are no symmetry-related clashes.

5.3 Torsion angles [i](#)

5.3.1 Protein backbone [i](#)

In the following table, the Percentiles column shows the percent Ramachandran outliers of the chain as a percentile score with respect to all X-ray entries followed by that with respect to entries of similar resolution.

The Analysed column shows the number of residues for which the backbone conformation was analysed, and the total number of residues.

Mol	Chain	Analysed	Favoured	Allowed	Outliers	Percentiles	
1	A	139/141 (99%)	134 (96%)	5 (4%)	0	100	100
1	C	139/141 (99%)	135 (97%)	4 (3%)	0	100	100
2	B	143/145 (99%)	138 (96%)	5 (4%)	0	100	100
2	D	143/145 (99%)	140 (98%)	3 (2%)	0	100	100
All	All	564/572 (99%)	547 (97%)	17 (3%)	0	100	100

There are no Ramachandran outliers to report.

5.3.2 Protein sidechains [i](#)

In the following table, the Percentiles column shows the percent sidechain outliers of the chain as a percentile score with respect to all X-ray entries followed by that with respect to entries of similar resolution.

The Analysed column shows the number of residues for which the sidechain conformation was analysed, and the total number of residues.

Mol	Chain	Analysed	Rotameric	Outliers	Percentiles	
1	A	113/113 (100%)	113 (100%)	0	100	100
1	C	113/113 (100%)	113 (100%)	0	100	100
2	B	117/117 (100%)	115 (98%)	2 (2%)	63	50
2	D	117/117 (100%)	117 (100%)	0	100	100
All	All	460/460 (100%)	458 (100%)	2 (0%)	92	90

All (2) residues with a non-rotameric sidechain are listed below:

Mol	Chain	Res	Type
2	B	2	HIS
2	B	19	ASN

Some sidechains can be flipped to improve hydrogen bonding and reduce clashes. All (14) such sidechains are listed below:

Mol	Chain	Res	Type
1	A	9	ASN
1	A	87	HIS
2	B	19	ASN
2	B	63	HIS
2	B	77	HIS
2	B	80	ASN
2	B	117	HIS
2	B	139	ASN
2	B	143	HIS
1	C	20	HIS
2	D	2	HIS
2	D	77	HIS
2	D	80	ASN
2	D	143	HIS

5.3.3 RNA [i](#)

There are no RNA molecules in this entry.

5.4 Non-standard residues in protein, DNA, RNA chains [i](#)

There are no non-standard protein/DNA/RNA residues in this entry.

5.5 Carbohydrates [i](#)

There are no carbohydrates in this entry.

5.6 Ligand geometry [i](#)

12 ligands are modelled in this entry.

In the following table, the Counts columns list the number of bonds (or angles) for which Mogul statistics could be retrieved, the number of bonds (or angles) that are observed in the model and the number of bonds (or angles) that are defined in the Chemical Component Dictionary. The Link column lists molecule types, if any, to which the group is linked. The Z score for a bond length (or angle) is the number of standard deviations the observed value is removed from the expected value. A bond length (or angle) with $|Z| > 2$ is considered an outlier worth inspection. RMSZ is the root-mean-square of all Z scores of the bond lengths (or angles).

Mol	Type	Chain	Res	Link	Bond lengths			Bond angles		
					Counts	RMSZ	# Z > 2	Counts	RMSZ	# Z > 2
3	NO	A	201	4	0,1,1	0.00	-	0,0,0	0.00	-
4	HEM	A	202	3	27,50,50	1.66	6 (22%)	17,82,82	1.06	1 (5%)
5	5JN	A	203[A]	-	29,32,32	2.01	13 (44%)	40,44,44	1.29	3 (7%)
6	RQ3	A	204	-	23,26,26	3.08	10 (43%)	31,37,37	1.56	6 (19%)
4	HEM	B	201	2	27,50,50	1.46	5 (18%)	17,82,82	1.52	3 (17%)
6	RQ3	B	202[B]	-	23,26,26	2.35	12 (52%)	31,37,37	1.32	2 (6%)
7	NO3	B	203	-	1,3,3	3.50	1 (100%)	0,3,3	0.00	-
3	NO	C	201	4	0,1,1	0.00	-	0,0,0	0.00	-
4	HEM	C	202	3	27,50,50	1.40	5 (18%)	17,82,82	1.28	2 (11%)
4	HEM	D	201	2	27,50,50	1.67	6 (22%)	17,82,82	1.42	3 (17%)
8	CAC	D	202	-	0,4,4	0.00	-	0,6,6	0.00	-
7	NO3	D	203	-	1,3,3	3.50	1 (100%)	0,3,3	0.00	-

In the following table, the Chirals column lists the number of chiral outliers, the number of chiral centers analysed, the number of these observed in the model and the number defined in the

Chemical Component Dictionary. Similar counts are reported in the Torsion and Rings columns. '-' means no outliers of that kind were identified.

Mol	Type	Chain	Res	Link	Chirals	Torsions	Rings
3	NO	A	201	4	-	0/0/0/0	0/0/0/0
4	HEM	A	202	3	-	0/6/54/54	0/0/8/8
5	5JN	A	203[A]	-	-	0/24/26/26	0/2/2/2
6	RQ3	A	204	-	-	0/13/19/19	0/2/2/2
4	HEM	B	201	2	-	0/6/54/54	0/0/8/8
6	RQ3	B	202[B]	-	-	0/13/19/19	0/2/2/2
7	NO3	B	203	-	-	0/0/0/0	0/0/0/0
3	NO	C	201	4	-	0/0/0/0	0/0/0/0
4	HEM	C	202	3	-	0/6/54/54	0/0/8/8
4	HEM	D	201	2	-	0/6/54/54	0/0/8/8
8	CAC	D	202	-	-	0/0/0/0	0/0/0/0
7	NO3	D	203	-	-	0/0/0/0	0/0/0/0

All (59) bond length outliers are listed below:

Mol	Chain	Res	Type	Atoms	Z	Observed(Å)	Ideal(Å)
4	A	202	HEM	C3C-CAC	-4.46	1.38	1.47
6	A	204	RQ3	C14-C15	-4.24	1.42	1.51
6	A	204	RQ3	C14-C11	-3.96	1.45	1.51
4	A	202	HEM	C3B-CAB	-3.81	1.40	1.47
5	A	203[A]	5JN	C12-C10	-3.77	1.43	1.51
4	B	201	HEM	C3B-CAB	-3.53	1.40	1.47
6	B	202[B]	RQ3	C14-C15	-3.52	1.43	1.51
4	D	201	HEM	C3B-CAB	-3.46	1.40	1.47
4	D	201	HEM	C3C-CAC	-3.30	1.41	1.47
4	C	202	HEM	C3C-CAC	-3.19	1.41	1.47
4	C	202	HEM	C3B-CAB	-3.17	1.41	1.47
4	B	201	HEM	C3B-C2B	-3.07	1.36	1.40
4	D	201	HEM	C3B-C2B	-3.03	1.36	1.40
4	B	201	HEM	C3C-CAC	-2.95	1.41	1.47
4	A	202	HEM	C3C-C2C	-2.78	1.36	1.40
4	C	202	HEM	C3C-C2C	-2.53	1.36	1.40
5	A	203[A]	5JN	C10-N9	-2.38	1.30	1.35
6	B	202[B]	RQ3	C21-C23	2.02	1.42	1.39
4	B	201	HEM	CBB-CAB	2.03	1.42	1.29
5	A	203[A]	5JN	C18-C13	2.05	1.43	1.38
5	A	203[A]	5JN	C6-C7	2.11	1.42	1.39
6	A	204	RQ3	C6-C4	2.15	1.57	1.53
6	B	202[B]	RQ3	C19-C18	2.17	1.43	1.39
4	A	202	HEM	CMA-C3A	2.20	1.56	1.51
4	A	202	HEM	CBC-CAC	2.21	1.44	1.29

Continued on next page...

Continued from previous page...

Mol	Chain	Res	Type	Atoms	Z	Observed(Å)	Ideal(Å)
4	C	202	HEM	C1C-C2C	2.22	1.47	1.42
5	A	203[A]	5JN	C6-C5	2.22	1.42	1.39
6	B	202[B]	RQ3	C12-C8	2.23	1.43	1.38
5	A	203[A]	5JN	C17-C18	2.23	1.42	1.38
4	D	201	HEM	CBC-CAC	2.24	1.44	1.29
4	C	202	HEM	CBB-CAB	2.25	1.44	1.29
5	A	203[A]	5JN	C8-C7	2.29	1.42	1.39
4	B	201	HEM	CBC-CAC	2.31	1.44	1.29
5	A	203[A]	5JN	C4-C3	2.34	1.43	1.39
6	B	202[B]	RQ3	O7-C4	2.34	1.49	1.45
4	A	202	HEM	CBB-CAB	2.37	1.45	1.29
5	A	203[A]	5JN	C17-C16	2.37	1.43	1.38
5	A	203[A]	5JN	C4-C5	2.43	1.43	1.39
6	B	202[B]	RQ3	C22-C23	2.46	1.43	1.39
6	B	202[B]	RQ3	C13-C12	2.61	1.43	1.38
6	B	202[B]	RQ3	C14-C11	2.63	1.55	1.51
5	A	203[A]	5JN	C8-C3	2.67	1.43	1.39
6	A	204	RQ3	O7-C4	2.71	1.50	1.45
5	A	203[A]	5JN	C15-C16	2.76	1.44	1.38
6	B	202[B]	RQ3	C9-C8	2.82	1.44	1.38
6	A	204	RQ3	C21-C23	2.84	1.43	1.39
4	D	201	HEM	C4A-NA	2.92	1.42	1.36
4	D	201	HEM	C1B-C2B	2.96	1.49	1.42
6	B	202[B]	RQ3	C22-C18	3.03	1.44	1.39
6	B	202[B]	RQ3	C19-C20	3.06	1.44	1.39
7	D	203	NO3	O1-N	3.50	1.40	1.24
7	B	203	NO3	O1-N	3.50	1.40	1.24
6	A	204	RQ3	C21-C20	3.51	1.44	1.39
6	A	204	RQ3	C10-C9	3.77	1.45	1.38
5	A	203[A]	5JN	C15-C14	4.51	1.46	1.38
6	A	204	RQ3	C22-C18	4.76	1.47	1.39
6	A	204	RQ3	C9-C8	5.00	1.48	1.38
6	B	202[B]	RQ3	C10-C9	5.32	1.48	1.38
6	A	204	RQ3	C13-C11	8.57	1.57	1.38

All (20) bond angle outliers are listed below:

Mol	Chain	Res	Type	Atoms	Z	Observed(°)	Ideal(°)
4	B	201	HEM	CBA-CAA-C2A	-2.92	106.90	112.48
4	D	201	HEM	CMA-C3A-C4A	-2.54	124.55	128.46
4	B	201	HEM	C4A-C3A-C2A	-2.51	105.25	107.00
6	A	204	RQ3	C14-C11-C13	-2.41	117.44	120.89

Continued on next page...

Continued from previous page...

Mol	Chain	Res	Type	Atoms	Z	Observed(°)	Ideal(°)
6	A	204	RQ3	C6-C4-C5	-2.39	106.55	110.21
4	C	202	HEM	C4A-C3A-C2A	-2.17	105.49	107.00
6	A	204	RQ3	C9-C10-C11	-2.10	118.12	121.02
4	D	201	HEM	C4C-C3C-C2C	-2.06	105.46	106.90
4	A	202	HEM	CBD-CAD-C3D	-2.02	108.62	112.47
6	B	202[B]	RQ3	C21-C20-C19	2.02	120.53	118.09
4	B	201	HEM	CMB-C2B-C3B	2.03	128.58	124.88
6	A	204	RQ3	C21-C20-C19	2.20	120.75	118.09
6	A	204	RQ3	C18-N17-C15	2.20	131.37	127.48
4	D	201	HEM	CMA-C3A-C2A	2.39	129.45	124.94
4	C	202	HEM	CMB-C2B-C3B	2.49	129.42	124.88
5	A	203[A]	5JN	O19-C20-C23	2.71	116.55	110.47
5	A	203[A]	5JN	O25-C23-C20	3.22	117.11	111.62
5	A	203[A]	5JN	C20-O19-C16	4.49	128.87	121.02
6	B	202[B]	RQ3	C4-O7-C8	4.79	129.97	121.10
6	A	204	RQ3	C4-O7-C8	5.26	130.84	121.10

There are no chirality outliers.

There are no torsion outliers.

There are no ring outliers.

6 monomers are involved in 10 short contacts:

Mol	Chain	Res	Type	Clashes	Symm-Clashes
5	A	203[A]	5JN	2	0
4	B	201	HEM	3	0
6	B	202[B]	RQ3	1	0
7	B	203	NO3	1	0
4	D	201	HEM	2	0
8	D	202	CAC	1	0

5.7 Other polymers [i](#)

There are no such residues in this entry.

5.8 Polymer linkage issues [i](#)

There are no chain breaks in this entry.

6 Fit of model and data [i](#)

6.1 Protein, DNA and RNA chains [i](#)

In the following table, the column labelled ‘#RSRZ> 2’ contains the number (and percentage) of RSRZ outliers, followed by percent RSRZ outliers for the chain as percentile scores relative to all X-ray entries and entries of similar resolution. The OWAB column contains the minimum, median, 95th percentile and maximum values of the occupancy-weighted average B-factor per residue. The column labelled ‘Q< 0.9’ lists the number of (and percentage) of residues with an average occupancy less than 0.9.

Mol	Chain	Analysed	<RSRZ>	#RSRZ>2	OWAB(Å ²)	Q<0.9
1	A	141/141 (100%)	-0.52	0 100 100	13, 21, 32, 40	0
1	C	141/141 (100%)	-0.64	0 100 100	12, 19, 28, 39	0
2	B	145/145 (100%)	-0.33	1 (0%) 87 88	15, 25, 41, 60	0
2	D	145/145 (100%)	-0.50	1 (0%) 87 88	12, 19, 34, 60	0
All	All	572/572 (100%)	-0.50	2 (0%) 93 93	12, 21, 35, 60	0

All (2) RSRZ outliers are listed below:

Mol	Chain	Res	Type	RSRZ
2	D	2	HIS	3.9
2	B	2	HIS	2.2

6.2 Non-standard residues in protein, DNA, RNA chains [i](#)

There are no non-standard protein/DNA/RNA residues in this entry.

6.3 Carbohydrates [i](#)

There are no carbohydrates in this entry.

6.4 Ligands [i](#)

In the following table, the Atoms column lists the number of modelled atoms in the group and the number defined in the chemical component dictionary. The B-factors column lists the minimum, median, 95th percentile and maximum values of B factors of atoms in the group. The column labelled ‘Q< 0.9’ lists the number of atoms with occupancy less than 0.9.

Mol	Type	Chain	Res	Atoms	RSCC	RSR	B-factors(\AA^2)	Q<0.9
5	5JN	A	203[A]	31/31	0.75	0.27	31,34,41,48	31
6	RQ3	B	202[B]	25/25	0.75	0.27	29,33,40,47	25
6	RQ3	A	204	25/25	0.80	0.24	31,40,47,50	25
8	CAC	D	202	5/5	0.86	0.14	93,93,95,100	0
7	NO3	B	203	4/4	0.89	0.19	45,46,53,59	0
7	NO3	D	203	4/4	0.90	0.15	25,41,49,49	0
4	HEM	B	201	43/43	0.97	0.08	15,25,42,44	0
4	HEM	C	202	43/43	0.98	0.07	10,16,37,44	0
4	HEM	D	201	43/43	0.98	0.08	10,15,22,25	0
4	HEM	A	202	43/43	0.98	0.07	7,18,29,39	0
3	NO	A	201	2/2	0.99	0.09	17,17,17,19	0
3	NO	C	201	2/2	1.00	0.04	17,17,17,19	0

6.5 Other polymers [\(i\)](#)

There are no such residues in this entry.