



# wwPDB X-ray Structure Validation Summary Report ⓘ

Oct 30, 2024 – 02:18 PM EDT

PDB ID : 9E2B  
Title : Structure of a solute binding protein from *Desulfonauticus* sp. bound to L-tryptophan  
Authors : Rahman, M.; Frkic, R.L.; Smith, O.B.; Jackson, C.J.  
Deposited on : 2024-10-22  
Resolution : 1.80 Å (reported)

This is a wwPDB X-ray Structure Validation Summary Report for a publicly released PDB entry.

We welcome your comments at [validation@mail.wwpdb.org](mailto:validation@mail.wwpdb.org)

A user guide is available at

<https://www.wwpdb.org/validation/2017/XrayValidationReportHelp>

with specific help available everywhere you see the ⓘ symbol.

The types of validation reports are described at

<http://www.wwpdb.org/validation/2017/FAQs#types>.

---

The following versions of software and data (see [references ⓘ](#)) were used in the production of this report:

MolProbity : 4.02b-467  
Mogul : 2022.3.0, CSD as543be (2022)  
Xtriage (Phenix) : 1.20.1  
EDS : 3.0  
buster-report : 1.1.7 (2018)  
Percentile statistics : 20231227.v01 (using entries in the PDB archive December 27th 2023)  
CCP4 : 9.0.003 (Gargrove)  
Density-Fitness : 1.0.11  
Ideal geometry (proteins) : Engh & Huber (2001)  
Ideal geometry (DNA, RNA) : Parkinson et al. (1996)  
Validation Pipeline (wwPDB-VP) : 2.39

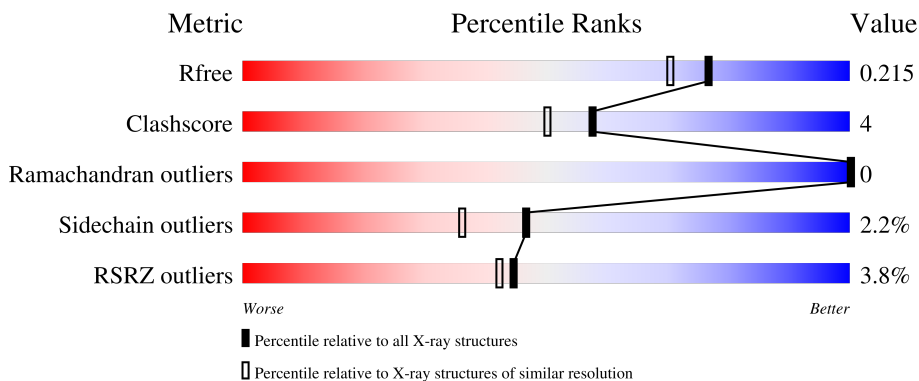
# 1 Overall quality at a glance

The following experimental techniques were used to determine the structure:

*X-RAY DIFFRACTION*

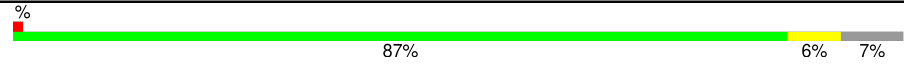
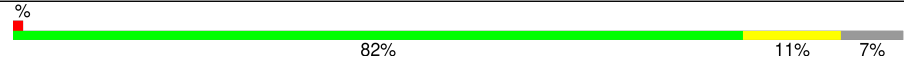



The reported resolution of this entry is 1.80 Å.

Percentile scores (ranging between 0-100) for global validation metrics of the entry are shown in the following graphic. The table shows the number of entries on which the scores are based.



Metric	Whole archive (#Entries)	Similar resolution (#Entries, resolution range(Å))
$R_{free}$	164625	7108 (1.80-1.80)
Clashscore	180529	8162 (1.80-1.80)
Ramachandran outliers	177936	8077 (1.80-1.80)
Sidechain outliers	177891	8076 (1.80-1.80)
RSRZ outliers	164620	7108 (1.80-1.80)

The table below summarises the geometric issues observed across the polymeric chains and their fit to the electron density. The red, orange, yellow and green segments of the lower bar indicate the fraction of residues that contain outliers for  $\geq 3$ , 2, 1 and 0 types of geometric quality criteria respectively. A grey segment represents the fraction of residues that are not modelled. The numeric value for each fraction is indicated below the corresponding segment, with a dot representing fractions  $\leq 5\%$ . The upper red bar (where present) indicates the fraction of residues that have poor fit to the electron density. The numeric value is given above the bar.

Mol	Chain	Length	Quality of chain
1	A	270	
1	B	270	
1	C	270	
1	D	270	
1	E	270	

*Continued on next page...*

*Continued from previous page...*

Mol	Chain	Length	Quality of chain
1	F	270	

The following table lists non-polymeric compounds, carbohydrate monomers and non-standard residues in protein, DNA, RNA chains that are outliers for geometric or electron-density-fit criteria:

Mol	Type	Chain	Res	Chirality	Geometry	Clashes	Electron density
3	EDO	A	308	-	-	X	-
4	PEG	B	303	-	-	X	-
4	PEG	D	302	-	-	X	-
6	PG4	E	302	-	-	X	-

## 2 Entry composition [i](#)

There are 7 unique types of molecules in this entry. The entry contains 13301 atoms, of which 0 are hydrogens and 0 are deuteriums.

In the tables below, the ZeroOcc column contains the number of atoms modelled with zero occupancy, the AltConf column contains the number of residues with at least one atom in alternate conformation and the Trace column contains the number of residues modelled with at most 2 atoms.

- Molecule 1 is a protein called ABC-type transporter, periplasmic subunit family 3.

Mol	Chain	Residues	Atoms					ZeroOcc	AltConf	Trace
			Total	C	N	O	S			
1	A	252	2028	1318	347	358	5	0	1	0
1	B	252	2018	1312	343	358	5	0	0	0
1	C	258	2066	1345	350	366	5	0	1	0
1	D	253	2045	1327	352	361	5	0	2	0
1	E	251	2023	1315	343	360	5	0	1	0
1	F	251	2008	1306	341	356	5	0	0	0

There are 114 discrepancies between the modelled and reference sequences:

Chain	Residue	Modelled	Actual	Comment	Reference
A	4	GLY	-	expression tag	UNP A0A101DJ27
A	5	SER	-	expression tag	UNP A0A101DJ27
A	6	SER	-	expression tag	UNP A0A101DJ27
A	7	HIS	-	expression tag	UNP A0A101DJ27
A	8	HIS	-	expression tag	UNP A0A101DJ27
A	9	HIS	-	expression tag	UNP A0A101DJ27
A	10	HIS	-	expression tag	UNP A0A101DJ27
A	11	HIS	-	expression tag	UNP A0A101DJ27
A	12	HIS	-	expression tag	UNP A0A101DJ27
A	13	SER	-	expression tag	UNP A0A101DJ27
A	14	SER	-	expression tag	UNP A0A101DJ27
A	15	GLY	-	expression tag	UNP A0A101DJ27
A	16	GLU	-	expression tag	UNP A0A101DJ27
A	17	ASN	-	expression tag	UNP A0A101DJ27
A	18	LEU	-	expression tag	UNP A0A101DJ27
A	19	TYR	-	expression tag	UNP A0A101DJ27
A	20	PHE	-	expression tag	UNP A0A101DJ27

*Continued on next page...*

*Continued from previous page...*

Chain	Residue	Modelled	Actual	Comment	Reference
A	21	GLN	-	expression tag	UNP A0A101DJ27
A	22	GLY	-	expression tag	UNP A0A101DJ27
B	4	GLY	-	expression tag	UNP A0A101DJ27
B	5	SER	-	expression tag	UNP A0A101DJ27
B	6	SER	-	expression tag	UNP A0A101DJ27
B	7	HIS	-	expression tag	UNP A0A101DJ27
B	8	HIS	-	expression tag	UNP A0A101DJ27
B	9	HIS	-	expression tag	UNP A0A101DJ27
B	10	HIS	-	expression tag	UNP A0A101DJ27
B	11	HIS	-	expression tag	UNP A0A101DJ27
B	12	HIS	-	expression tag	UNP A0A101DJ27
B	13	SER	-	expression tag	UNP A0A101DJ27
B	14	SER	-	expression tag	UNP A0A101DJ27
B	15	GLY	-	expression tag	UNP A0A101DJ27
B	16	GLU	-	expression tag	UNP A0A101DJ27
B	17	ASN	-	expression tag	UNP A0A101DJ27
B	18	LEU	-	expression tag	UNP A0A101DJ27
B	19	TYR	-	expression tag	UNP A0A101DJ27
B	20	PHE	-	expression tag	UNP A0A101DJ27
B	21	GLN	-	expression tag	UNP A0A101DJ27
B	22	GLY	-	expression tag	UNP A0A101DJ27
C	4	GLY	-	expression tag	UNP A0A101DJ27
C	5	SER	-	expression tag	UNP A0A101DJ27
C	6	SER	-	expression tag	UNP A0A101DJ27
C	7	HIS	-	expression tag	UNP A0A101DJ27
C	8	HIS	-	expression tag	UNP A0A101DJ27
C	9	HIS	-	expression tag	UNP A0A101DJ27
C	10	HIS	-	expression tag	UNP A0A101DJ27
C	11	HIS	-	expression tag	UNP A0A101DJ27
C	12	HIS	-	expression tag	UNP A0A101DJ27
C	13	SER	-	expression tag	UNP A0A101DJ27
C	14	SER	-	expression tag	UNP A0A101DJ27
C	15	GLY	-	expression tag	UNP A0A101DJ27
C	16	GLU	-	expression tag	UNP A0A101DJ27
C	17	ASN	-	expression tag	UNP A0A101DJ27
C	18	LEU	-	expression tag	UNP A0A101DJ27
C	19	TYR	-	expression tag	UNP A0A101DJ27
C	20	PHE	-	expression tag	UNP A0A101DJ27
C	21	GLN	-	expression tag	UNP A0A101DJ27
C	22	GLY	-	expression tag	UNP A0A101DJ27
D	4	GLY	-	expression tag	UNP A0A101DJ27
D	5	SER	-	expression tag	UNP A0A101DJ27

*Continued on next page...*

*Continued from previous page...*

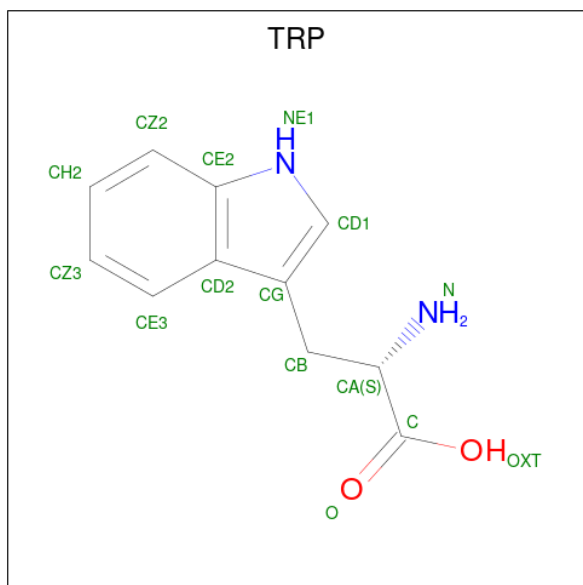
Chain	Residue	Modelled	Actual	Comment	Reference
D	6	SER	-	expression tag	UNP A0A101DJ27
D	7	HIS	-	expression tag	UNP A0A101DJ27
D	8	HIS	-	expression tag	UNP A0A101DJ27
D	9	HIS	-	expression tag	UNP A0A101DJ27
D	10	HIS	-	expression tag	UNP A0A101DJ27
D	11	HIS	-	expression tag	UNP A0A101DJ27
D	12	HIS	-	expression tag	UNP A0A101DJ27
D	13	SER	-	expression tag	UNP A0A101DJ27
D	14	SER	-	expression tag	UNP A0A101DJ27
D	15	GLY	-	expression tag	UNP A0A101DJ27
D	16	GLU	-	expression tag	UNP A0A101DJ27
D	17	ASN	-	expression tag	UNP A0A101DJ27
D	18	LEU	-	expression tag	UNP A0A101DJ27
D	19	TYR	-	expression tag	UNP A0A101DJ27
D	20	PHE	-	expression tag	UNP A0A101DJ27
D	21	GLN	-	expression tag	UNP A0A101DJ27
D	22	GLY	-	expression tag	UNP A0A101DJ27
E	4	GLY	-	expression tag	UNP A0A101DJ27
E	5	SER	-	expression tag	UNP A0A101DJ27
E	6	SER	-	expression tag	UNP A0A101DJ27
E	7	HIS	-	expression tag	UNP A0A101DJ27
E	8	HIS	-	expression tag	UNP A0A101DJ27
E	9	HIS	-	expression tag	UNP A0A101DJ27
E	10	HIS	-	expression tag	UNP A0A101DJ27
E	11	HIS	-	expression tag	UNP A0A101DJ27
E	12	HIS	-	expression tag	UNP A0A101DJ27
E	13	SER	-	expression tag	UNP A0A101DJ27
E	14	SER	-	expression tag	UNP A0A101DJ27
E	15	GLY	-	expression tag	UNP A0A101DJ27
E	16	GLU	-	expression tag	UNP A0A101DJ27
E	17	ASN	-	expression tag	UNP A0A101DJ27
E	18	LEU	-	expression tag	UNP A0A101DJ27
E	19	TYR	-	expression tag	UNP A0A101DJ27
E	20	PHE	-	expression tag	UNP A0A101DJ27
E	21	GLN	-	expression tag	UNP A0A101DJ27
E	22	GLY	-	expression tag	UNP A0A101DJ27
F	4	GLY	-	expression tag	UNP A0A101DJ27
F	5	SER	-	expression tag	UNP A0A101DJ27
F	6	SER	-	expression tag	UNP A0A101DJ27
F	7	HIS	-	expression tag	UNP A0A101DJ27
F	8	HIS	-	expression tag	UNP A0A101DJ27
F	9	HIS	-	expression tag	UNP A0A101DJ27

*Continued on next page...*

Continued from previous page...

Chain	Residue	Modelled	Actual	Comment	Reference
F	10	HIS	-	expression tag	UNP A0A101DJ27
F	11	HIS	-	expression tag	UNP A0A101DJ27
F	12	HIS	-	expression tag	UNP A0A101DJ27
F	13	SER	-	expression tag	UNP A0A101DJ27
F	14	SER	-	expression tag	UNP A0A101DJ27
F	15	GLY	-	expression tag	UNP A0A101DJ27
F	16	GLU	-	expression tag	UNP A0A101DJ27
F	17	ASN	-	expression tag	UNP A0A101DJ27
F	18	LEU	-	expression tag	UNP A0A101DJ27
F	19	TYR	-	expression tag	UNP A0A101DJ27
F	20	PHE	-	expression tag	UNP A0A101DJ27
F	21	GLN	-	expression tag	UNP A0A101DJ27
F	22	GLY	-	expression tag	UNP A0A101DJ27

- Molecule 2 is TRYPTOPHAN (three-letter code: TRP) (formula:  $C_{11}H_{12}N_2O_2$ ) (labeled as "Ligand of Interest" by depositor).



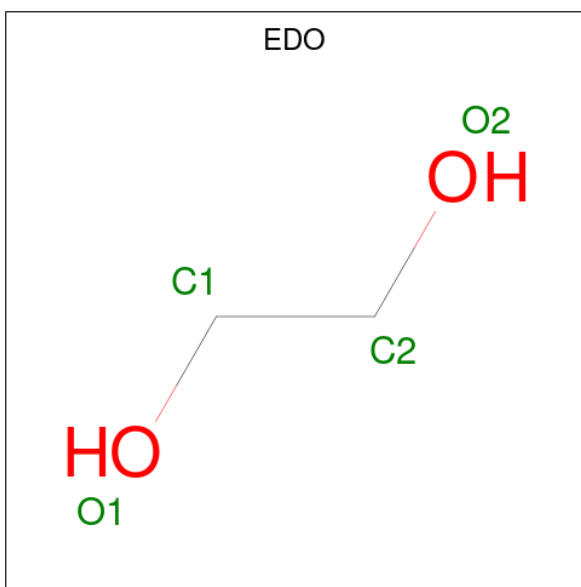
Mol	Chain	Residues	Atoms				ZeroOcc	AltConf
			Total	C	N	O		
2	A	1	Total	C	N	O	0	0
			15	11	2	2		
2	B	1	Total	C	N	O	0	0
			15	11	2	2		
2	C	1	Total	C	N	O	0	0
			15	11	2	2		
2	D	1	Total	C	N	O	0	0
			15	11	2	2		

Continued on next page...

Continued from previous page...

Mol	Chain	Residues	Atoms				ZeroOcc	AltConf
2	E	1	Total	C	N	O	0	0
			15	11	2	2		
2	F	1	Total	C	N	O	0	0
			15	11	2	2		

- Molecule 3 is 1,2-ETHANEDIOL (three-letter code: EDO) (formula: C<sub>2</sub>H<sub>6</sub>O<sub>2</sub>).



Mol	Chain	Residues	Atoms			ZeroOcc	AltConf
3	A	1	Total	C	O	0	0
			4	2	2		
3	A	1	Total	C	O	0	0
			4	2	2		
3	A	1	Total	C	O	0	0
			4	2	2		
3	A	1	Total	C	O	0	0
			4	2	2		
3	A	1	Total	C	O	0	0
			4	2	2		
3	A	1	Total	C	O	0	0
			4	2	2		
3	A	1	Total	C	O	0	0
			4	2	2		
3	B	1	Total	C	O	0	0
			4	2	2		
3	C	1	Total	C	O	0	0
			4	2	2		

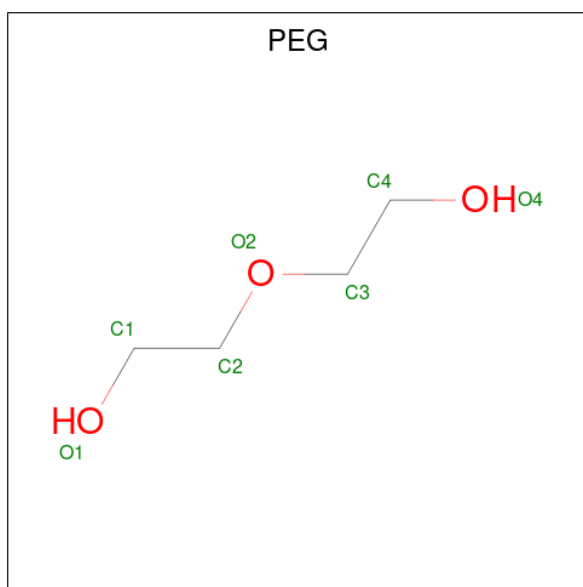
Continued on next page...



*Continued from previous page...*

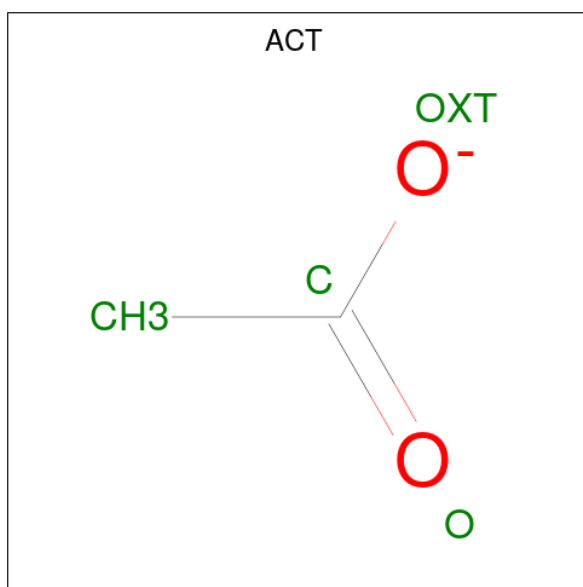
Mol	Chain	Residues	Atoms	ZeroOcc	AltConf
3	C	1	Total C O 4 2 2	0	0
3	C	1	Total C O 4 2 2	0	0
3	D	1	Total C O 4 2 2	0	0
3	D	1	Total C O 4 2 2	0	0
3	D	1	Total C O 4 2 2	0	0
3	D	1	Total C O 4 2 2	0	0
3	E	1	Total C O 4 2 2	0	0
3	E	1	Total C O 4 2 2	0	0
3	E	1	Total C O 4 2 2	0	0
3	E	1	Total C O 4 2 2	0	0
3	F	1	Total C O 4 2 2	0	0
3	F	1	Total C O 4 2 2	0	0
3	F	1	Total C O 4 2 2	0	0
3	F	1	Total C O 4 2 2	0	0

- Molecule 4 is DI(HYDROXYETHYL)ETHER (three-letter code: PEG) (formula: C<sub>4</sub>H<sub>10</sub>O<sub>3</sub>).



Mol	Chain	Residues	Atoms			ZeroOcc	AltConf
4	B	1	Total	C	O	0	0
			7	4	3		
4	C	1	Total	C	O	0	0
			7	4	3		
4	D	1	Total	C	O	0	0
			7	4	3		

- Molecule 5 is ACETATE ION (three-letter code: ACT) (formula: C<sub>2</sub>H<sub>3</sub>O<sub>2</sub>).



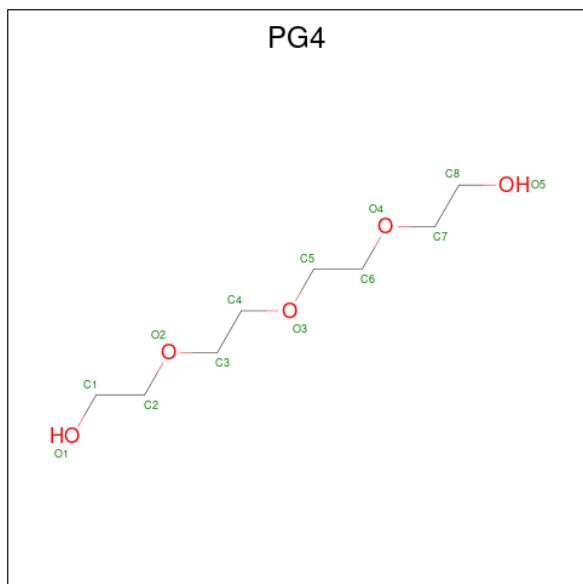
Mol	Chain	Residues	Atoms			ZeroOcc	AltConf
5	C	1	Total	C	O	0	0
			4	2	2		

*Continued on next page...*

Continued from previous page...

Mol	Chain	Residues	Atoms			ZeroOcc	AltConf
5	D	1	Total	C	O	0	0
			4	2	2		

- Molecule 6 is TETRAETHYLENE GLYCOL (three-letter code: PG4) (formula:  $C_8H_{18}O_5$ ).




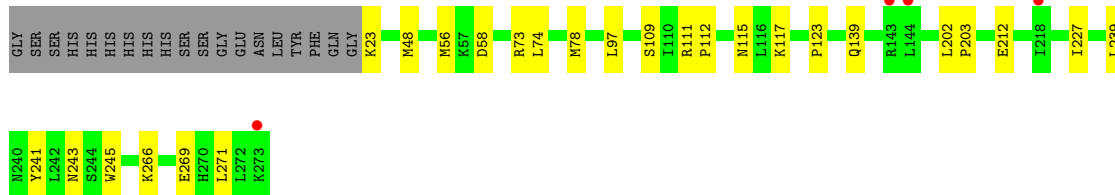
Mol	Chain	Residues	Atoms			ZeroOcc	AltConf
6	E	1	Total	C	O	0	0
			13	8	5		

- Molecule 7 is water.


Mol	Chain	Residues	Atoms		ZeroOcc	AltConf
7	A	191	Total	O	0	0
			191	191		
7	B	184	Total	O	0	0
			184	184		
7	C	117	Total	O	0	0
			117	117		
7	D	133	Total	O	0	0
			133	133		
7	E	134	Total	O	0	0
			134	134		
7	F	130	Total	O	0	0
			130	130		

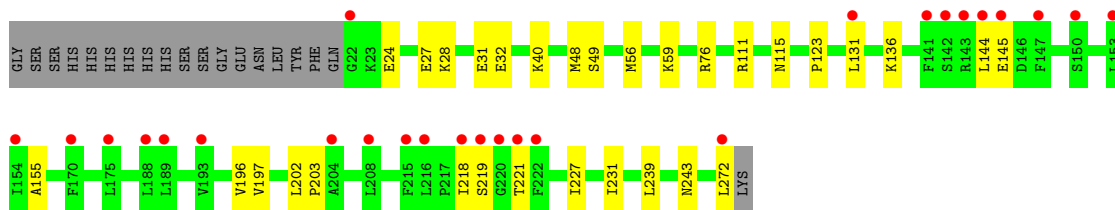


Chain E: 



- Molecule 1: ABC-type transporter, periplasmic subunit family 3

Chain F: 



## 4 Data and refinement statistics i

Property	Value	Source
Space group	P 1	Depositor
Cell constants a, b, c, $\alpha$ , $\beta$ , $\gamma$	74.51Å 74.59Å 92.35Å 98.21° 91.24° 119.84°	Depositor
Resolution (Å)	39.14 – 1.80 39.14 – 1.80	Depositor EDS
% Data completeness (in resolution range)	97.7 (39.14-1.80) 97.7 (39.14-1.80)	Depositor EDS
$R_{merge}$	0.09	Depositor
$R_{sym}$	(Not available)	Depositor
$\langle I/\sigma(I) \rangle$ <sup>1</sup>	1.24 (at 1.79Å)	Xtrriage
Refinement program	PHENIX (1.20.1_4487: ???)	Depositor
R, $R_{free}$	0.185 , 0.216 0.184 , 0.215	Depositor DCC
$R_{free}$ test set	8153 reflections (5.18%)	wwPDB-VP
Wilson B-factor (Å <sup>2</sup> )	27.3	Xtrriage
Anisotropy	0.336	Xtrriage
Bulk solvent $k_{sol}$ (e/Å <sup>3</sup> ), $B_{sol}$ (Å <sup>2</sup> )	0.31 , 33.4	EDS
L-test for twinning <sup>2</sup>	$\langle  L  \rangle = 0.50$ , $\langle L^2 \rangle = 0.33$	Xtrriage
Estimated twinning fraction	0.015 for h,-h-k,-l	Xtrriage
$F_o, F_c$ correlation	0.96	EDS
Total number of atoms	13301	wwPDB-VP
Average B, all atoms (Å <sup>2</sup> )	33.0	wwPDB-VP

Xtrriage's analysis on translational NCS is as follows: *The largest off-origin peak in the Patterson function is 5.45% of the height of the origin peak. No significant pseudotranslation is detected.*

<sup>1</sup>Intensities estimated from amplitudes.

<sup>2</sup>Theoretical values of  $\langle |L| \rangle$ ,  $\langle L^2 \rangle$  for acentric reflections are 0.5, 0.333 respectively for untwinned datasets, and 0.375, 0.2 for perfectly twinned datasets.

## 5 Model quality [i](#)

### 5.1 Standard geometry [i](#)

Bond lengths and bond angles in the following residue types are not validated in this section: PEG, EDO, PG4, ACT

The Z score for a bond length (or angle) is the number of standard deviations the observed value is removed from the expected value. A bond length (or angle) with  $|Z| > 5$  is considered an outlier worth inspection. RMSZ is the root-mean-square of all Z scores of the bond lengths (or angles).

Mol	Chain	Bond lengths		Bond angles	
		RMSZ	# Z  >5	RMSZ	# Z  >5
1	A	0.37	0/2076	0.58	0/2803
1	B	0.36	0/2066	0.57	0/2788
1	C	0.36	0/2115	0.59	0/2856
1	D	0.36	0/2093	0.59	0/2824
1	E	0.37	0/2071	0.56	0/2795
1	F	0.33	0/2056	0.54	0/2777
All	All	0.36	0/12477	0.57	0/16843

There are no bond length outliers.

There are no bond angle outliers.

There are no chirality outliers.

There are no planarity outliers.

### 5.2 Too-close contacts [i](#)

In the following table, the Non-H and H(model) columns list the number of non-hydrogen atoms and hydrogen atoms in the chain respectively. The H(added) column lists the number of hydrogen atoms added and optimized by MolProbity. The Clashes column lists the number of clashes within the asymmetric unit, whereas Symm-Clashes lists symmetry-related clashes.

Mol	Chain	Non-H	H(model)	H(added)	Clashes	Symm-Clashes
1	A	2028	0	2074	21	0
1	B	2018	0	2061	19	0
1	C	2066	0	2099	12	0
1	D	2045	0	2088	20	0
1	E	2023	0	2063	16	0
1	F	2008	0	2048	19	0
2	A	15	0	9	0	0

*Continued on next page...*

*Continued from previous page...*

Mol	Chain	Non-H	H(model)	H(added)	Clashes	Symm-Clashes
2	B	15	0	9	0	0
2	C	15	0	9	0	0
2	D	15	0	9	0	0
2	E	15	0	9	1	0
2	F	15	0	9	0	0
3	A	28	0	42	15	0
3	B	4	0	6	0	0
3	C	12	0	18	1	0
3	D	16	0	24	2	0
3	E	16	0	24	1	0
3	F	16	0	24	2	0
4	B	7	0	10	5	0
4	C	7	0	10	3	0
4	D	7	0	10	5	0
5	C	4	0	3	0	0
5	D	4	0	3	0	0
6	E	13	0	18	7	0
7	A	191	0	0	0	0
7	B	184	0	0	3	0
7	C	117	0	0	0	0
7	D	133	0	0	3	0
7	E	134	0	0	0	0
7	F	130	0	0	4	0
All	All	13301	0	12679	111	0

The all-atom clashscore is defined as the number of clashes found per 1000 atoms (including hydrogen atoms). The all-atom clashscore for this structure is 4.

The worst 5 of 111 close contacts within the same asymmetric unit are listed below, sorted by their clash magnitude.

Atom-1	Atom-2	Interatomic distance (Å)	Clash overlap (Å)
1:A:111[B]:ARG:HE	3:A:308:EDO:H21	1.05	1.16
1:A:111[A]:ARG:HE	3:A:308:EDO:H21	1.05	1.15
1:A:111[A]:ARG:NE	3:A:308:EDO:H21	1.70	1.05
1:A:111[A]:ARG:HE	3:A:308:EDO:C2	1.71	1.01
1:A:111[B]:ARG:NE	3:A:308:EDO:H21	1.75	1.00

There are no symmetry-related clashes.



## 5.3 Torsion angles [i](#)

### 5.3.1 Protein backbone [i](#)

In the following table, the Percentiles column shows the percent Ramachandran outliers of the chain as a percentile score with respect to all X-ray entries followed by that with respect to entries of similar resolution.

The Analysed column shows the number of residues for which the backbone conformation was analysed, and the total number of residues.

Mol	Chain	Analysed	Favoured	Allowed	Outliers	Percentiles	
1	A	251/270 (93%)	248 (99%)	3 (1%)	0	100	100
1	B	250/270 (93%)	247 (99%)	3 (1%)	0	100	100
1	C	257/270 (95%)	255 (99%)	2 (1%)	0	100	100
1	D	253/270 (94%)	250 (99%)	3 (1%)	0	100	100
1	E	250/270 (93%)	247 (99%)	3 (1%)	0	100	100
1	F	249/270 (92%)	245 (98%)	4 (2%)	0	100	100
All	All	1510/1620 (93%)	1492 (99%)	18 (1%)	0	100	100

There are no Ramachandran outliers to report.

### 5.3.2 Protein sidechains [i](#)

In the following table, the Percentiles column shows the percent sidechain outliers of the chain as a percentile score with respect to all X-ray entries followed by that with respect to entries of similar resolution.

The Analysed column shows the number of residues for which the sidechain conformation was analysed, and the total number of residues.

Mol	Chain	Analysed	Rotameric	Outliers	Percentiles	
1	A	213/228 (93%)	210 (99%)	3 (1%)	62	56
1	B	212/228 (93%)	207 (98%)	5 (2%)	44	32
1	C	215/228 (94%)	211 (98%)	4 (2%)	52	43
1	D	214/228 (94%)	208 (97%)	6 (3%)	38	27
1	E	213/228 (93%)	207 (97%)	6 (3%)	38	27
1	F	211/228 (92%)	206 (98%)	5 (2%)	44	32
All	All	1278/1368 (93%)	1249 (98%)	29 (2%)	47	34

5 of 29 residues with a non-rotameric sidechain are listed below:

Mol	Chain	Res	Type
1	D	56	MET
1	F	115	ASN
1	D	150	SER
1	F	24	GLU
1	D	136	LYS

Sometimes sidechains can be flipped to improve hydrogen bonding and reduce clashes. All (1) such sidechains are listed below:

Mol	Chain	Res	Type
1	D	260	HIS

### 5.3.3 RNA [i](#)

There are no RNA molecules in this entry.

### 5.4 Non-standard residues in protein, DNA, RNA chains [i](#)

There are no non-standard protein/DNA/RNA residues in this entry.

### 5.5 Carbohydrates [i](#)

There are no oligosaccharides in this entry.

### 5.6 Ligand geometry [i](#)

35 ligands are modelled in this entry.

In the following table, the Counts columns list the number of bonds (or angles) for which Mogul statistics could be retrieved, the number of bonds (or angles) that are observed in the model and the number of bonds (or angles) that are defined in the Chemical Component Dictionary. The Link column lists molecule types, if any, to which the group is linked. The Z score for a bond length (or angle) is the number of standard deviations the observed value is removed from the expected value. A bond length (or angle) with  $|Z| > 2$  is considered an outlier worth inspection. RMSZ is the root-mean-square of all Z scores of the bond lengths (or angles).

Mol	Type	Chain	Res	Link	Bond lengths			Bond angles		
					Counts	RMSZ	$\# Z  > 2$	Counts	RMSZ	$\# Z  > 2$
4	PEG	B	303	-	6,6,6	0.10	0	5,5,5	0.33	0
3	EDO	C	306	-	3,3,3	0.28	0	2,2,2	0.58	0
3	EDO	A	305	-	3,3,3	0.45	0	2,2,2	0.27	0
3	EDO	A	303	-	3,3,3	0.44	0	2,2,2	0.40	0

Mol	Type	Chain	Res	Link	Bond lengths			Bond angles		
					Counts	RMSZ	# Z  > 2	Counts	RMSZ	# Z  > 2
4	PEG	C	302	-	6,6,6	0.14	0	5,5,5	0.31	0
6	PG4	E	302	-	12,12,12	0.14	0	11,11,11	0.13	0
3	EDO	E	304	-	3,3,3	0.38	0	2,2,2	0.48	0
3	EDO	E	305	-	3,3,3	0.44	0	2,2,2	0.35	0
2	TRP	B	301	-	14,16,16	0.88	1 (7%)	13,22,22	1.15	1 (7%)
4	PEG	D	302	-	6,6,6	0.12	0	5,5,5	0.19	0
3	EDO	F	302	-	3,3,3	0.44	0	2,2,2	0.25	0
3	EDO	A	306	-	3,3,3	0.40	0	2,2,2	0.50	0
3	EDO	E	303	-	3,3,3	0.41	0	2,2,2	0.55	0
3	EDO	A	308	-	3,3,3	0.15	0	2,2,2	0.24	0
2	TRP	F	301	-	14,16,16	0.87	1 (7%)	13,22,22	1.17	1 (7%)
3	EDO	C	304	-	3,3,3	0.41	0	2,2,2	0.44	0
3	EDO	D	307	-	3,3,3	0.43	0	2,2,2	0.51	0
3	EDO	B	302	-	3,3,3	0.48	0	2,2,2	0.38	0
3	EDO	D	304	-	3,3,3	0.46	0	2,2,2	0.36	0
2	TRP	E	301	-	14,16,16	0.87	0	13,22,22	1.11	1 (7%)
3	EDO	F	305	-	3,3,3	0.39	0	2,2,2	0.49	0
2	TRP	A	301	-	14,16,16	1.08	2 (14%)	13,22,22	1.07	1 (7%)
2	TRP	C	301	-	14,16,16	0.90	1 (7%)	13,22,22	1.12	2 (15%)
5	ACT	C	305	-	3,3,3	1.45	1 (33%)	3,3,3	1.34	0
3	EDO	F	304	-	3,3,3	0.42	0	2,2,2	0.48	0
3	EDO	F	303	-	3,3,3	0.42	0	2,2,2	0.40	0
3	EDO	C	303	-	3,3,3	0.43	0	2,2,2	0.47	0
3	EDO	A	307	-	3,3,3	0.39	0	2,2,2	0.51	0
5	ACT	D	306	-	3,3,3	1.01	0	3,3,3	1.40	0
3	EDO	D	305	-	3,3,3	0.40	0	2,2,2	0.49	0
3	EDO	D	303	-	3,3,3	0.47	0	2,2,2	0.27	0
3	EDO	E	306	-	3,3,3	0.08	0	2,2,2	0.19	0
3	EDO	A	302	-	3,3,3	0.47	0	2,2,2	0.30	0
2	TRP	D	301	-	14,16,16	0.94	1 (7%)	13,22,22	1.10	1 (7%)
3	EDO	A	304	-	3,3,3	0.47	0	2,2,2	0.38	0

In the following table, the Chirals column lists the number of chiral outliers, the number of chiral centers analysed, the number of these observed in the model and the number defined in the Chemical Component Dictionary. Similar counts are reported in the Torsion and Rings columns. '-' means no outliers of that kind were identified.

Mol	Type	Chain	Res	Link	Chirals	Torsions	Rings
4	PEG	B	303	-	-	2/4/4/4	-
3	EDO	C	306	-	-	1/1/1/1	-
3	EDO	A	305	-	-	1/1/1/1	-

Continued on next page...

Continued from previous page...

Mol	Type	Chain	Res	Link	Chirals	Torsions	Rings
3	EDO	A	303	-	-	1/1/1/1	-
4	PEG	C	302	-	-	3/4/4/4	-
6	PG4	E	302	-	-	7/10/10/10	-
3	EDO	E	304	-	-	0/1/1/1	-
3	EDO	E	305	-	-	0/1/1/1	-
2	TRP	B	301	-	-	0/7/8/8	0/2/2/2
4	PEG	D	302	-	-	3/4/4/4	-
3	EDO	F	302	-	-	1/1/1/1	-
3	EDO	A	306	-	-	0/1/1/1	-
3	EDO	E	303	-	-	1/1/1/1	-
3	EDO	A	308	-	-	1/1/1/1	-
2	TRP	F	301	-	-	1/7/8/8	0/2/2/2
3	EDO	C	304	-	-	0/1/1/1	-
3	EDO	D	307	-	-	1/1/1/1	-
3	EDO	B	302	-	-	0/1/1/1	-
3	EDO	D	304	-	-	1/1/1/1	-
2	TRP	E	301	-	-	0/7/8/8	0/2/2/2
3	EDO	F	305	-	-	0/1/1/1	-
2	TRP	A	301	-	-	0/7/8/8	0/2/2/2
2	TRP	C	301	-	-	1/7/8/8	0/2/2/2
3	EDO	F	304	-	-	1/1/1/1	-
3	EDO	F	303	-	-	0/1/1/1	-
3	EDO	C	303	-	-	0/1/1/1	-
3	EDO	A	307	-	-	1/1/1/1	-
3	EDO	D	305	-	-	0/1/1/1	-
3	EDO	D	303	-	-	0/1/1/1	-
3	EDO	E	306	-	-	1/1/1/1	-
3	EDO	A	302	-	-	1/1/1/1	-
2	TRP	D	301	-	-	0/7/8/8	0/2/2/2
3	EDO	A	304	-	-	0/1/1/1	-

The worst 5 of 7 bond length outliers are listed below:

Mol	Chain	Res	Type	Atoms	Z	Observed(Å)	Ideal(Å)
2	A	301	TRP	CZ3-CE3	2.59	1.42	1.36
2	D	301	TRP	OXT-C	-2.44	1.22	1.30
2	A	301	TRP	OXT-C	-2.41	1.23	1.30
2	F	301	TRP	OXT-C	-2.23	1.23	1.30
5	C	305	ACT	CH3-C	2.21	1.57	1.49

The worst 5 of 7 bond angle outliers are listed below:

Mol	Chain	Res	Type	Atoms	Z	Observed(°)	Ideal(°)
2	F	301	TRP	OXT-C-O	-2.89	117.52	124.08
2	B	301	TRP	OXT-C-O	-2.72	117.92	124.08
2	E	301	TRP	OXT-C-O	-2.65	118.06	124.08
2	D	301	TRP	OXT-C-O	-2.48	118.45	124.08
2	C	301	TRP	OXT-C-O	-2.47	118.47	124.08

There are no chirality outliers.

5 of 29 torsion outliers are listed below:

Mol	Chain	Res	Type	Atoms
6	E	302	PG4	C1-C2-O2-C3
6	E	302	PG4	O3-C5-C6-O4
4	C	302	PEG	O2-C3-C4-O4
6	E	302	PG4	O1-C1-C2-O2
4	B	303	PEG	C1-C2-O2-C3

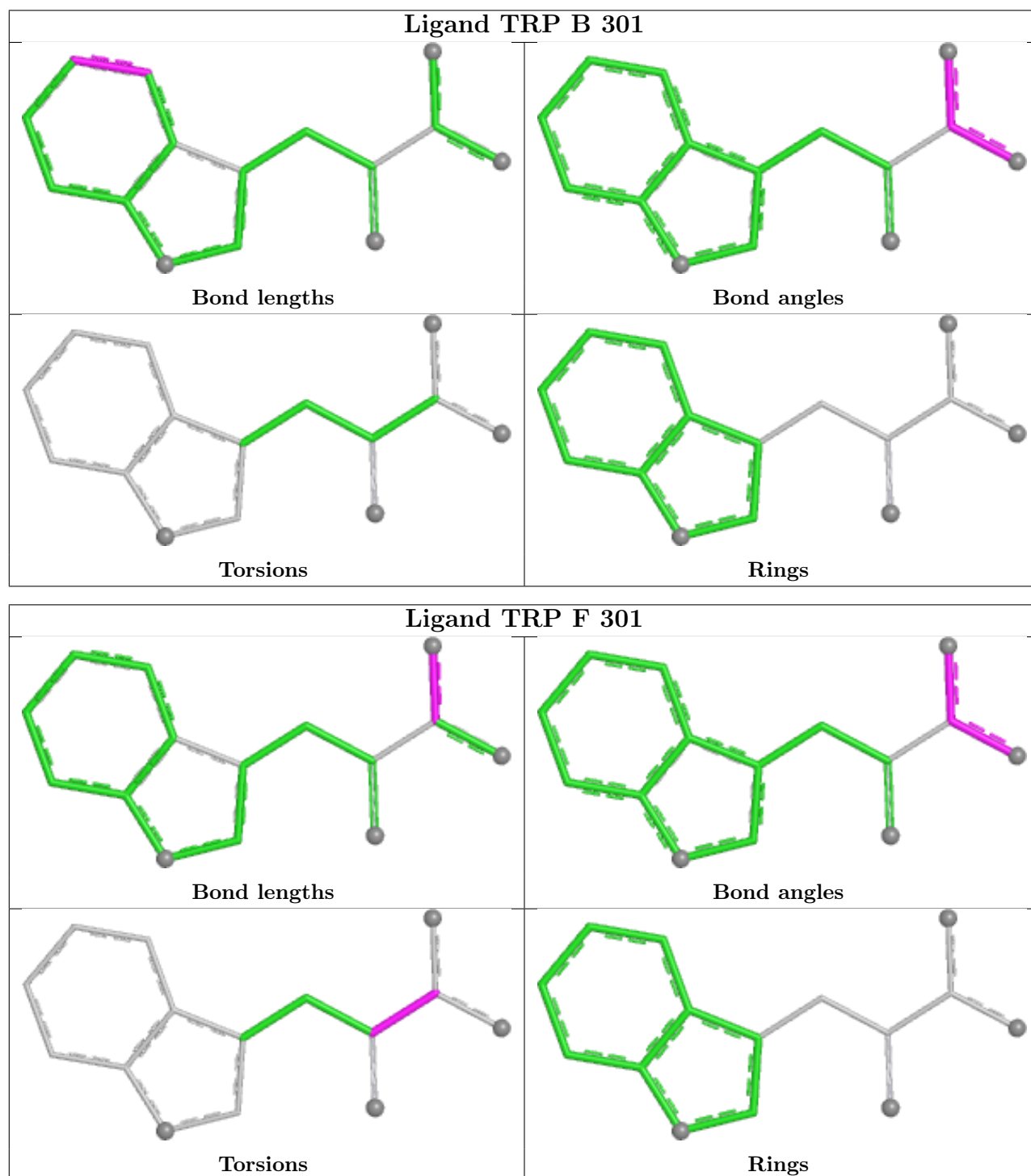
There are no ring outliers.

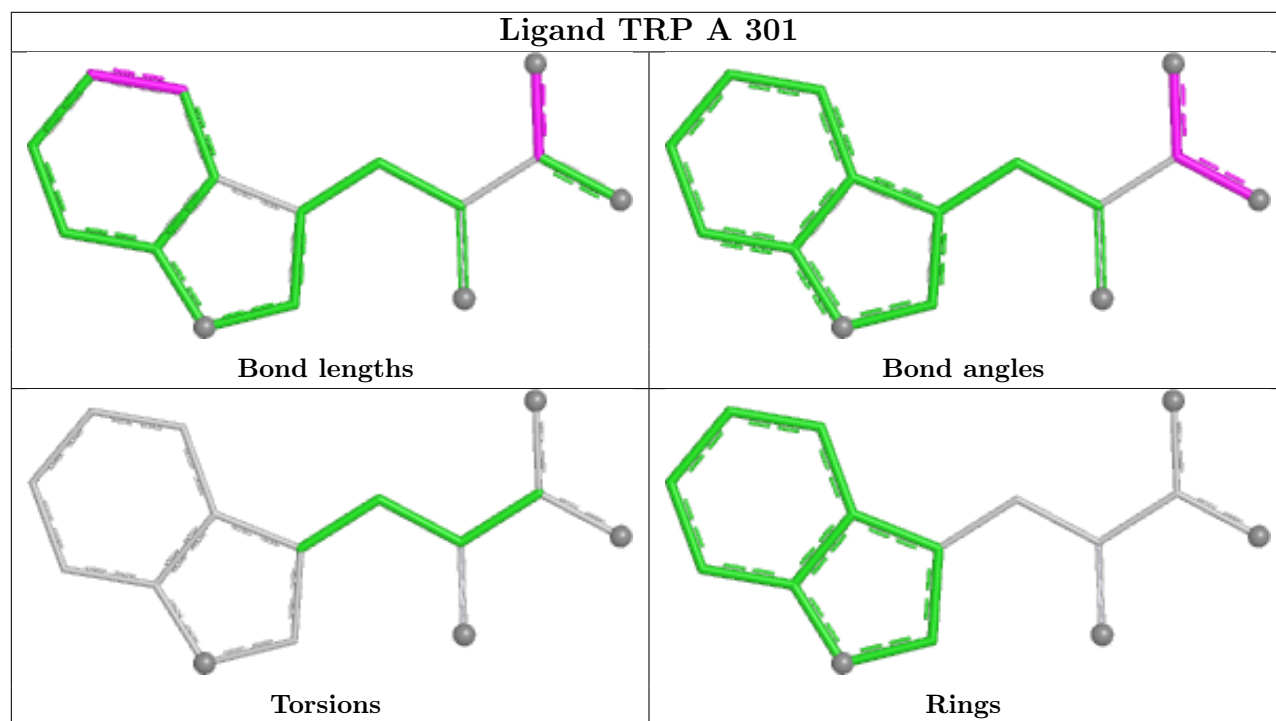
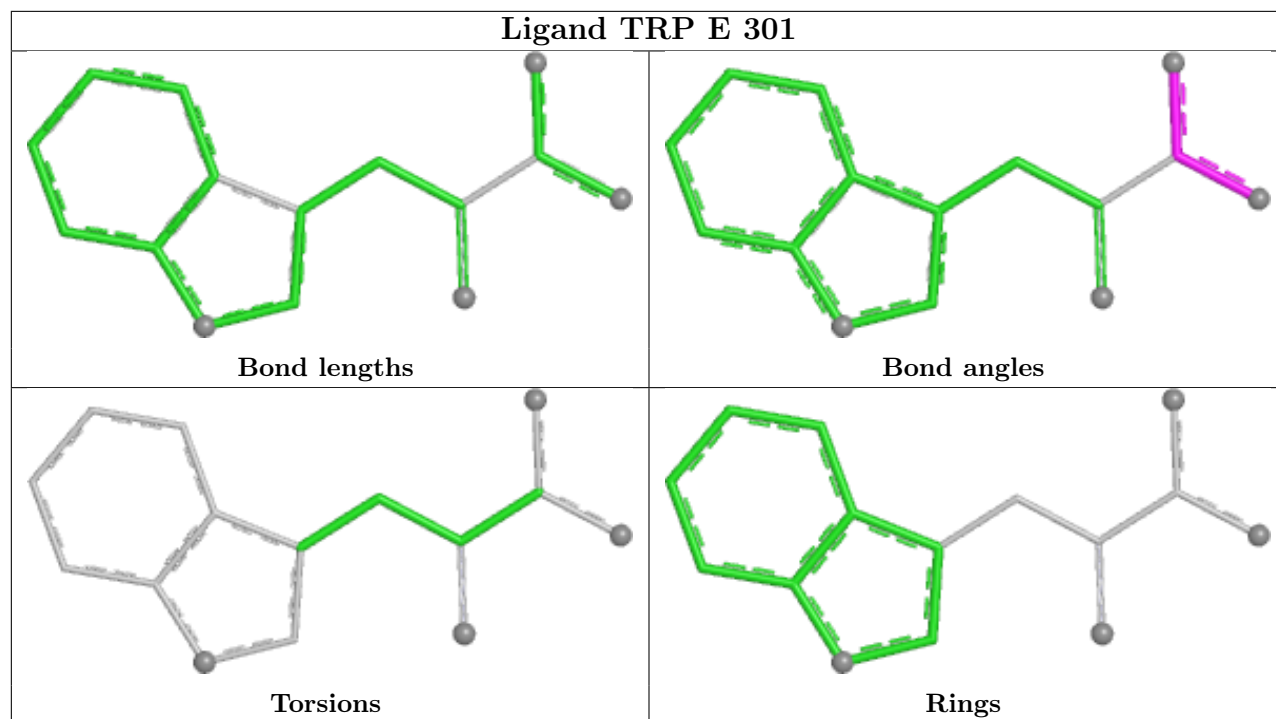
12 monomers are involved in 42 short contacts:

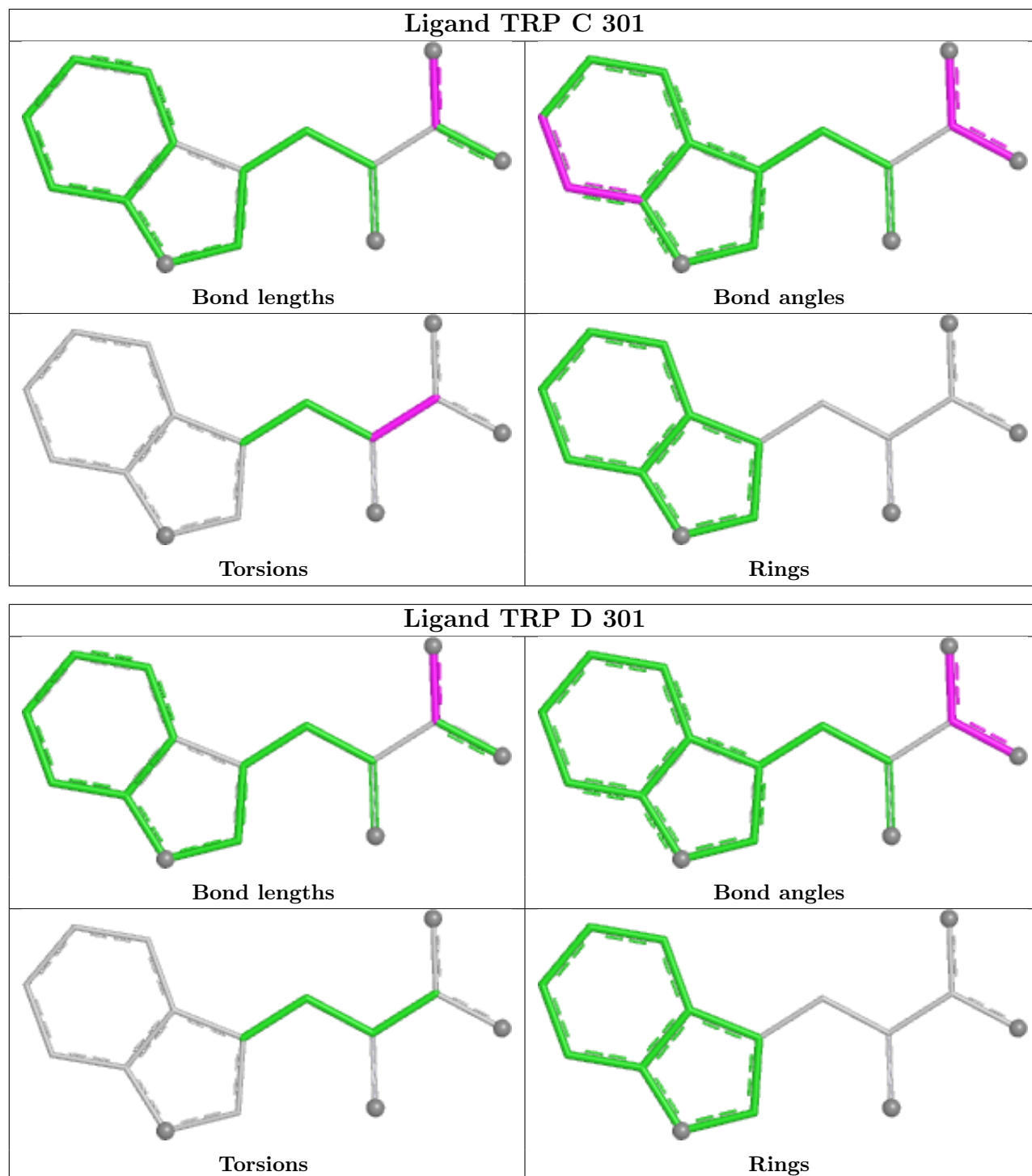
Mol	Chain	Res	Type	Clashes	Symm-Clashes
4	B	303	PEG	5	0
3	A	303	EDO	1	0
4	C	302	PEG	3	0
6	E	302	PG4	7	0
4	D	302	PEG	5	0
3	F	302	EDO	1	0
3	A	308	EDO	14	0
3	C	304	EDO	1	0
3	D	304	EDO	2	0
2	E	301	TRP	1	0
3	F	305	EDO	1	0
3	E	306	EDO	1	0

The following is a two-dimensional graphical depiction of Mogul quality analysis of bond lengths, bond angles, torsion angles, and ring geometry for all instances of the Ligand of Interest. In addition, ligands with molecular weight > 250 and outliers as shown on the validation Tables will also be included. For torsion angles, if less than 5% of the Mogul distribution of torsion angles is within 10 degrees of the torsion angle in question, then that torsion angle is considered an outlier. Any bond that is central to one or more torsion angles identified as an outlier by Mogul will be highlighted in the graph. For rings, the root-mean-square deviation (RMSD) between the ring in question and similar rings identified by Mogul is calculated over all ring torsion angles. If the average RMSD is greater than 60 degrees and the minimal RMSD between the ring in question and any Mogul-identified rings is also greater than 60 degrees, then that ring is considered an outlier.

The outliers are highlighted in purple. The color gray indicates Mogul did not find sufficient equivalents in the CSD to analyse the geometry.







## 5.7 Other polymers [i](#)

There are no such residues in this entry.



## 5.8 Polymer linkage issues

There are no chain breaks in this entry.

## 6 Fit of model and data [i](#)

### 6.1 Protein, DNA and RNA chains [i](#)

In the following table, the column labelled ‘#RSRZ> 2’ contains the number (and percentage) of RSRZ outliers, followed by percent RSRZ outliers for the chain as percentile scores relative to all X-ray entries and entries of similar resolution. The OWAB column contains the minimum, median, 95<sup>th</sup> percentile and maximum values of the occupancy-weighted average B-factor per residue. The column labelled ‘Q< 0.9’ lists the number of (and percentage) of residues with an average occupancy less than 0.9.

Mol	Chain	Analysed	<RSRZ>	#RSRZ>2	OWAB(Å <sup>2</sup> )	Q<0.9
1	A	252/270 (93%)	-0.41	4 (1%) 70 69	12, 25, 42, 66	1 (0%)
1	B	252/270 (93%)	-0.31	4 (1%) 70 69	18, 27, 46, 83	0
1	C	258/270 (95%)	0.01	9 (3%) 47 45	16, 32, 54, 79	1 (0%)
1	D	253/270 (93%)	-0.01	10 (3%) 43 40	12, 29, 63, 76	2 (0%)
1	E	251/270 (92%)	-0.11	4 (1%) 70 69	19, 32, 53, 83	1 (0%)
1	F	251/270 (92%)	0.53	26 (10%) 13 11	25, 37, 62, 79	0
All	All	1517/1620 (93%)	-0.05	57 (3%) 44 42	12, 30, 57, 83	5 (0%)

The worst 5 of 57 RSRZ outliers are listed below:

Mol	Chain	Res	Type	RSRZ
1	C	19	TYR	5.4
1	C	18	LEU	4.9
1	C	17	ASN	4.7
1	A	22	GLY	4.6
1	C	20	PHE	3.8

### 6.2 Non-standard residues in protein, DNA, RNA chains [i](#)

There are no non-standard protein/DNA/RNA residues in this entry.

### 6.3 Carbohydrates [i](#)

There are no monosaccharides in this entry.

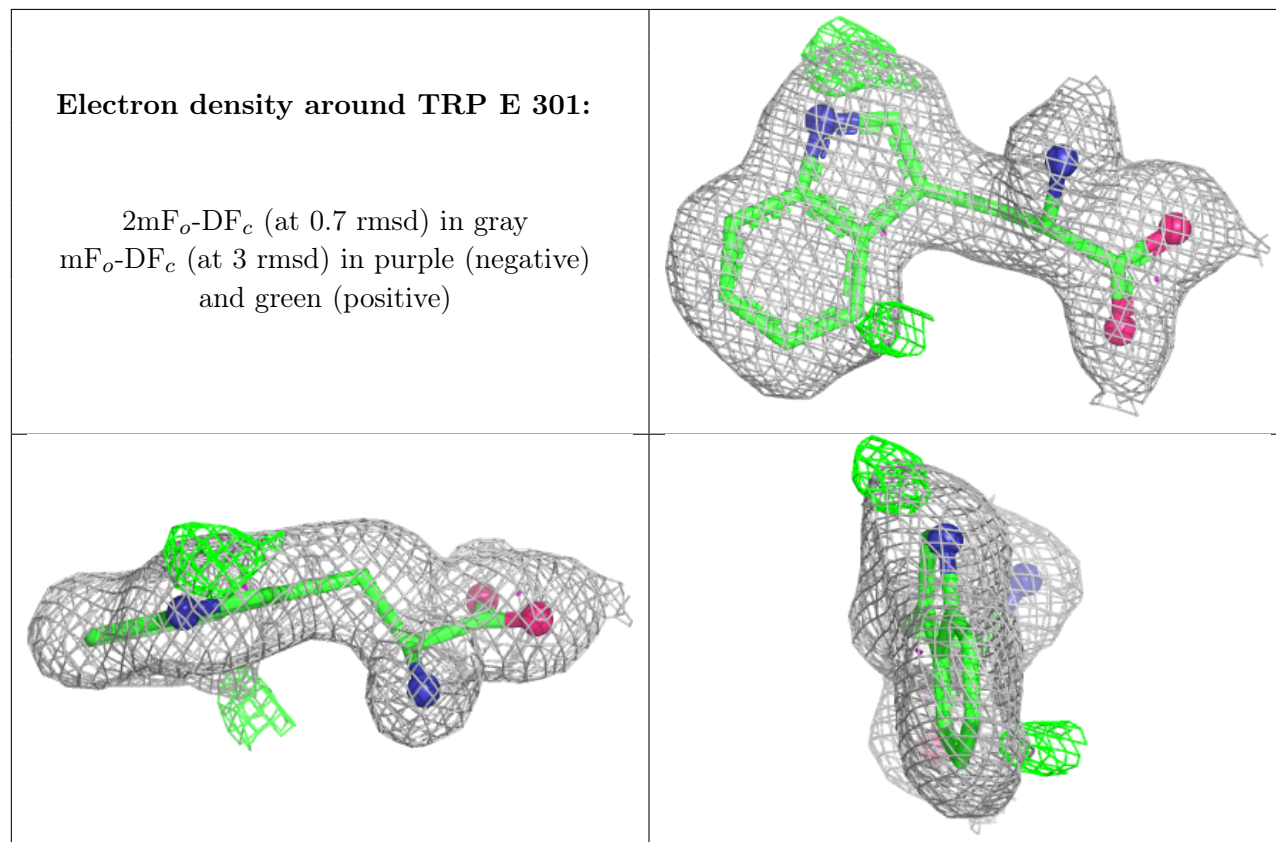
## 6.4 Ligands [i](#)

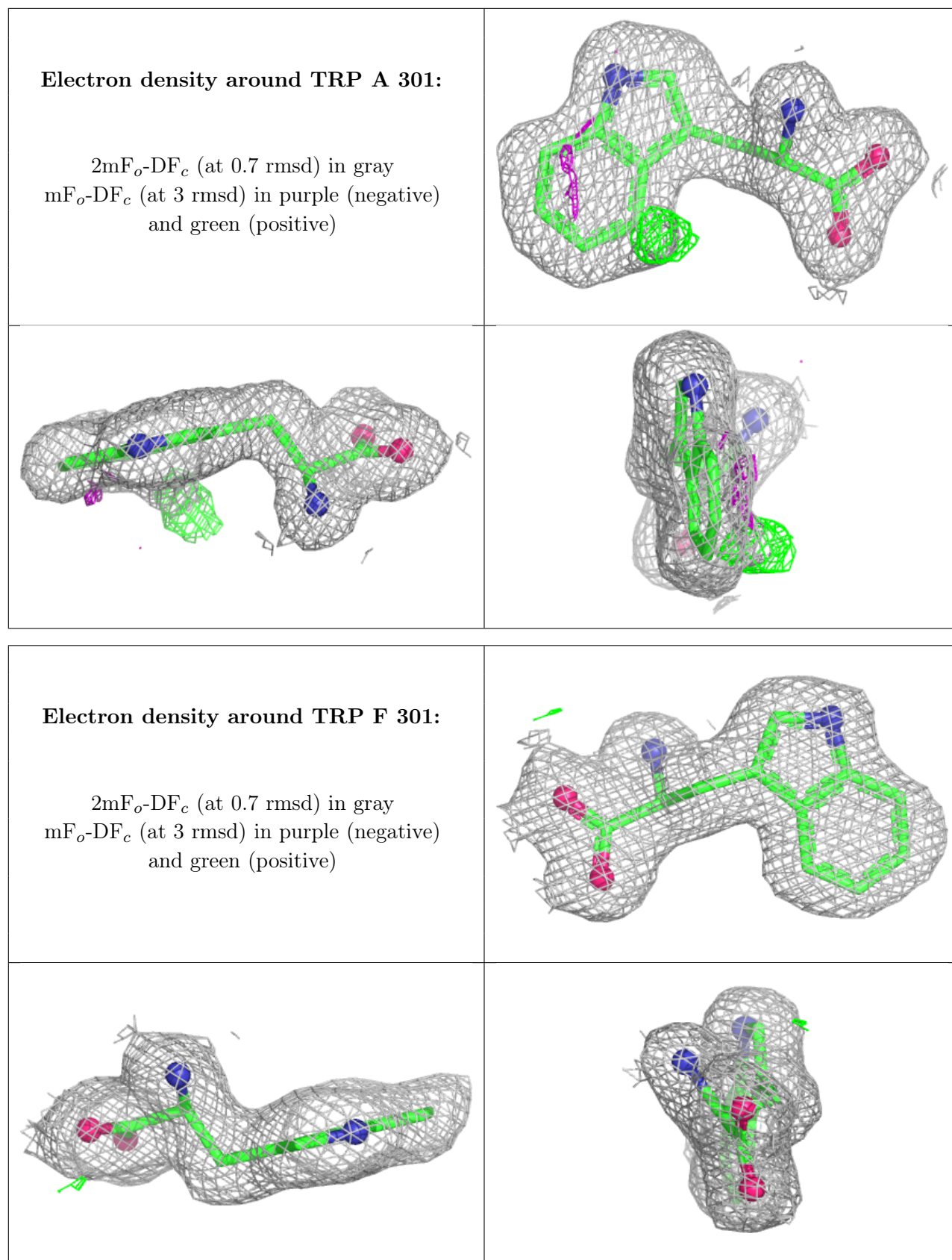
In the following table, the Atoms column lists the number of modelled atoms in the group and the number defined in the chemical component dictionary. The B-factors column lists the minimum, median, 95<sup>th</sup> percentile and maximum values of B factors of atoms in the group. The column labelled 'Q< 0.9' lists the number of atoms with occupancy less than 0.9.

Mol	Type	Chain	Res	Atoms	RSCC	RSR	B-factors(Å <sup>2</sup> )	Q<0.9
3	EDO	D	303	4/4	0.71	0.17	47,50,53,59	0
3	EDO	F	304	4/4	0.71	0.17	52,54,59,60	0
3	EDO	E	306	4/4	0.72	0.20	49,50,53,60	0
3	EDO	D	307	4/4	0.74	0.19	42,46,46,49	0
3	EDO	C	304	4/4	0.78	0.18	45,48,49,52	0
3	EDO	E	305	4/4	0.78	0.15	43,48,52,55	0
3	EDO	A	308	4/4	0.79	0.22	37,40,42,46	0
3	EDO	D	305	4/4	0.81	0.26	38,39,49,54	0
3	EDO	A	302	4/4	0.83	0.14	41,46,49,50	0
3	EDO	A	306	4/4	0.83	0.15	38,39,47,50	0
6	PG4	E	302	13/13	0.84	0.18	23,29,37,39	13
3	EDO	E	304	4/4	0.85	0.19	32,45,47,48	0
3	EDO	E	303	4/4	0.87	0.15	35,39,42,43	0
3	EDO	F	302	4/4	0.87	0.14	50,52,54,54	0
3	EDO	C	306	4/4	0.87	0.12	34,36,37,47	0
4	PEG	B	303	7/7	0.87	0.19	18,27,35,45	7
3	EDO	A	303	4/4	0.87	0.14	36,38,44,50	0
3	EDO	F	303	4/4	0.88	0.12	48,50,58,59	0
3	EDO	D	304	4/4	0.88	0.20	35,36,42,46	0
4	PEG	C	302	7/7	0.89	0.12	25,31,37,38	0
4	PEG	D	302	7/7	0.89	0.12	25,27,38,39	0
3	EDO	C	303	4/4	0.89	0.15	36,37,44,48	0
3	EDO	A	304	4/4	0.90	0.18	33,38,42,46	0
3	EDO	A	305	4/4	0.90	0.13	26,27,34,35	0
3	EDO	B	302	4/4	0.90	0.15	34,36,39,46	0
2	TRP	E	301	15/15	0.92	0.08	23,29,32,32	0
5	ACT	D	306	4/4	0.93	0.08	24,30,33,42	0
3	EDO	F	305	4/4	0.94	0.09	32,36,42,50	0
3	EDO	A	307	4/4	0.94	0.13	26,29,37,44	0
2	TRP	A	301	15/15	0.95	0.07	17,21,24,25	0
2	TRP	F	301	15/15	0.95	0.07	26,33,39,41	0
2	TRP	B	301	15/15	0.95	0.07	18,23,28,29	0
5	ACT	C	305	4/4	0.95	0.13	33,34,35,37	0
2	TRP	C	301	15/15	0.95	0.08	20,25,37,38	0
2	TRP	D	301	15/15	0.95	0.08	18,23,39,39	0

The following is a graphical depiction of the model fit to experimental electron density of all

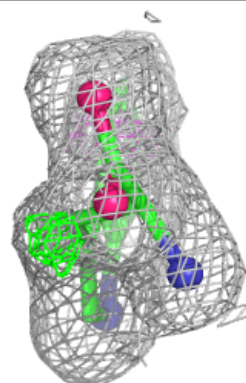
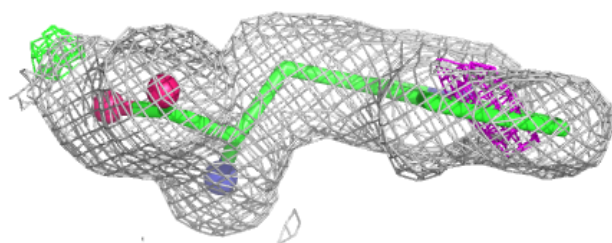
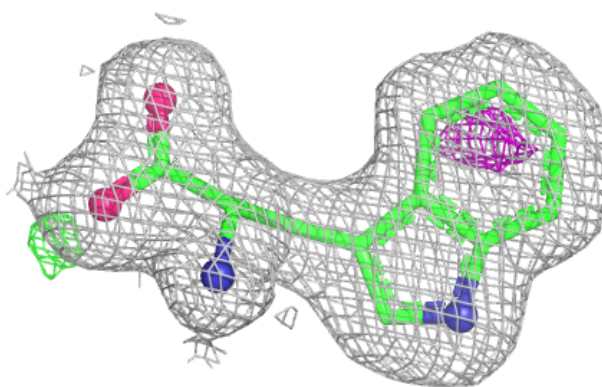
instances of the Ligand of Interest. In addition, ligands with molecular weight > 250 and outliers as shown on the geometry validation Tables will also be included. Each fit is shown from different orientation to approximate a three-dimensional view.



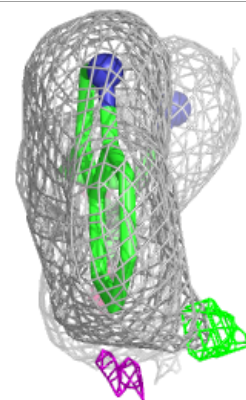
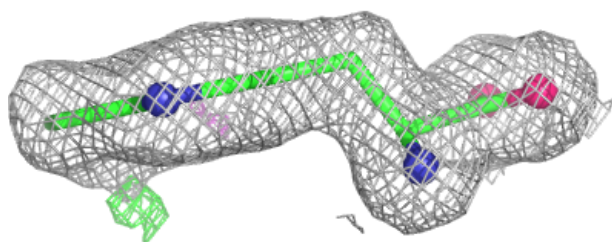
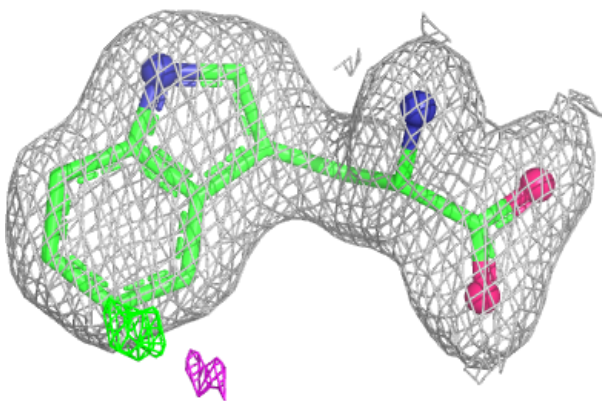


**Electron density around TRP B 301:**

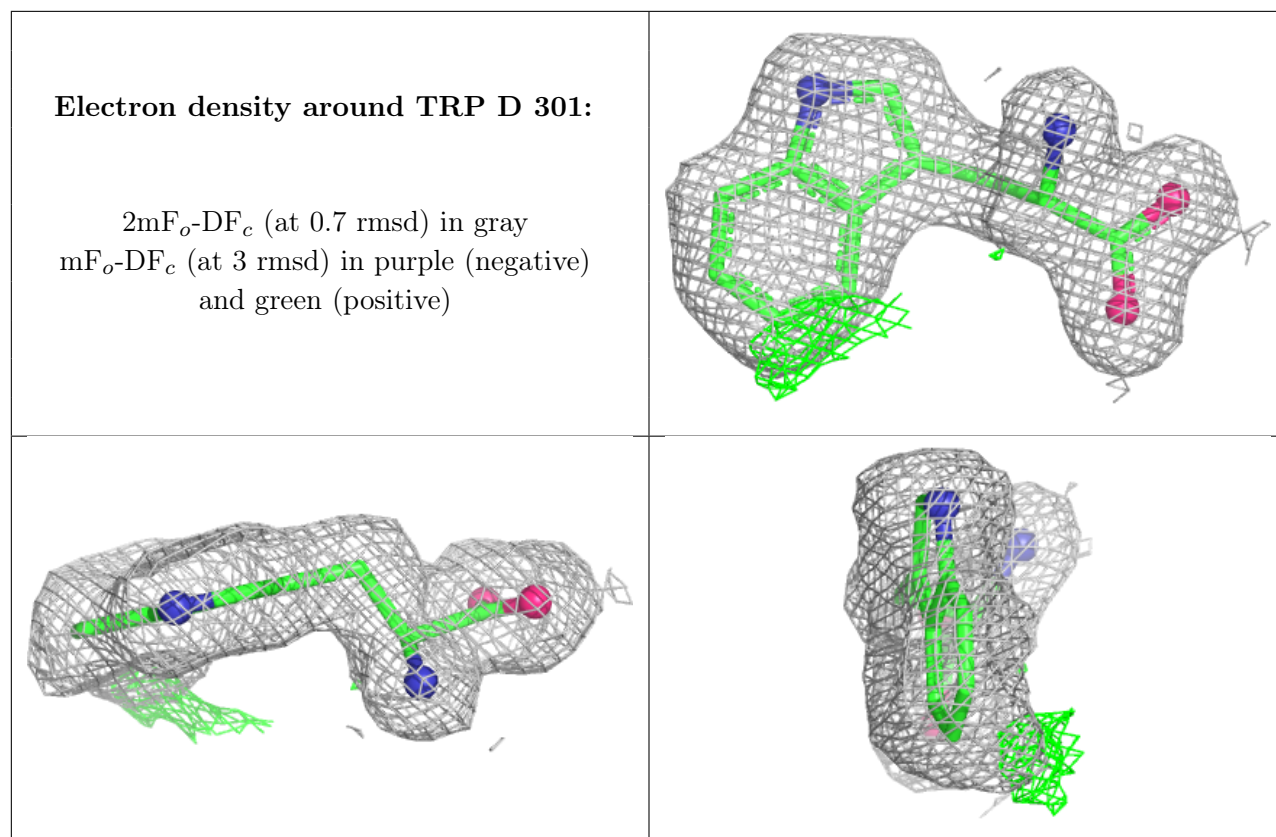
$2mF_o-DF_c$  (at 0.7 rmsd) in gray  
 $mF_o-DF_c$  (at 3 rmsd) in purple (negative)  
and green (positive)

**Electron density around TRP C 301:**

$2mF_o-DF_c$  (at 0.7 rmsd) in gray  
 $mF_o-DF_c$  (at 3 rmsd) in purple (negative)  
and green (positive)







## 6.5 Other polymers [i](#)

There are no such residues in this entry.