



# Full wwPDB X-ray Structure Validation Report ⓘ

May 25, 2020 – 03:34 am BST

PDB ID : 5E7D  
Title : Crystal Structure of the fifth bromodomain of human PB1 in complex with a hydroxyphenyl ligand  
Authors : Filippakopoulos, P.; Picaud, S.; von Delft, F.; Arrowsmith, C.H.; Edwards, A.; Bountra, C.; Owen, D.; Knapp, S.; Structural Genomics Consortium (SGC)  
Deposited on : 2015-10-12  
Resolution : 1.87 Å(reported)

This is a Full wwPDB X-ray Structure Validation Report for a publicly released PDB entry.

We welcome your comments at [validation@mail.wwpdb.org](mailto:validation@mail.wwpdb.org)

A user guide is available at

<https://www.wwpdb.org/validation/2017/XrayValidationReportHelp>

with specific help available everywhere you see the ⓘ symbol.

---

The following versions of software and data (see [references ⓘ](#)) were used in the production of this report:

MolProbity : 4.02b-467  
Mogul : 1.8.5 (274361), CSD as541be (2020)  
Xtriage (Phenix) : 1.13  
EDS : 2.11  
Percentile statistics : 20191225.v01 (using entries in the PDB archive December 25th 2019)  
Refmac : 5.8.0158  
CCP4 : 7.0.044 (Gargrove)  
Ideal geometry (proteins) : Engh & Huber (2001)  
Ideal geometry (DNA, RNA) : Parkinson et al. (1996)  
Validation Pipeline (wwPDB-VP) : 2.11

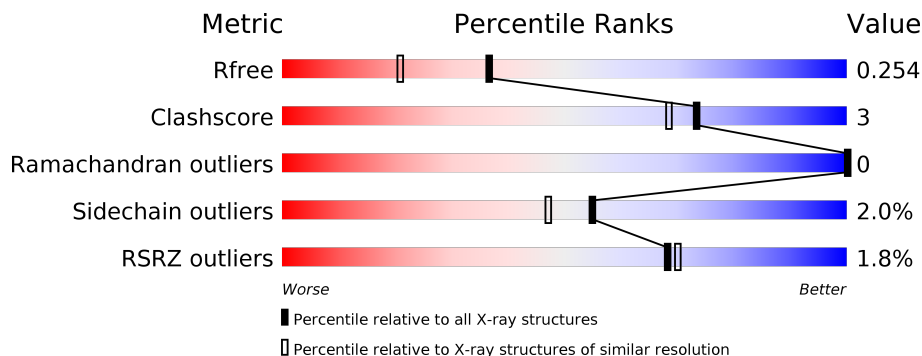
# 1 Overall quality at a glance

The following experimental techniques were used to determine the structure:

*X-RAY DIFFRACTION*

The reported resolution of this entry is 1.87 Å.

Percentile scores (ranging between 0-100) for global validation metrics of the entry are shown in the following graphic. The table shows the number of entries on which the scores are based.



Metric	Whole archive (#Entries)	Similar resolution (#Entries, resolution range(Å))
$R_{free}$	130704	9470 (1.90-1.86)
Clashscore	141614	10282 (1.90-1.86)
Ramachandran outliers	138981	10152 (1.90-1.86)
Sidechain outliers	138945	10152 (1.90-1.86)
RSRZ outliers	127900	9303 (1.90-1.86)

The table below summarises the geometric issues observed across the polymeric chains and their fit to the electron density. The red, orange, yellow and green segments on the lower bar indicate the fraction of residues that contain outliers for  $\geq 3$ , 2, 1 and 0 types of geometric quality criteria respectively. A grey segment represents the fraction of residues that are not modelled. The numeric value for each fraction is indicated below the corresponding segment, with a dot representing fractions  $\leq 5\%$ . The upper red bar (where present) indicates the fraction of residues that have poor fit to the electron density. The numeric value is given above the bar.

Mol	Chain	Length	Quality of chain
1	A	124	 85% 10%
1	B	124	 2% 78% 10% 10%
1	C	124	 % 81% 8% 10%
1	D	124	 4% 77% 12% 10%

## 2 Entry composition

There are 4 unique types of molecules in this entry. The entry contains 3928 atoms, of which 0 are hydrogens and 0 are deuteriums.

In the tables below, the ZeroOcc column contains the number of atoms modelled with zero occupancy, the AltConf column contains the number of residues with at least one atom in alternate conformation and the Trace column contains the number of residues modelled with at most 2 atoms.

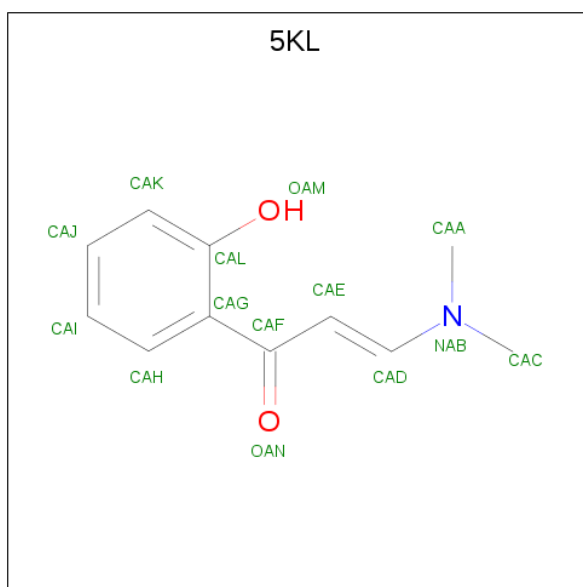
- Molecule 1 is a protein called Protein polybromo-1.

Mol	Chain	Residues	Atoms					ZeroOcc	AltConf	Trace
			Total	C	N	O	S			
1	A	111	Total 919	C 586	N 152	O 171	S 10	0	1	0
1	B	111	Total 904	C 578	N 146	O 170	S 10	0	0	0
1	C	111	Total 905	C 576	N 148	O 171	S 10	0	0	0
1	D	111	Total 908	C 579	N 148	O 171	S 10	0	0	0

There are 8 discrepancies between the modelled and reference sequences:

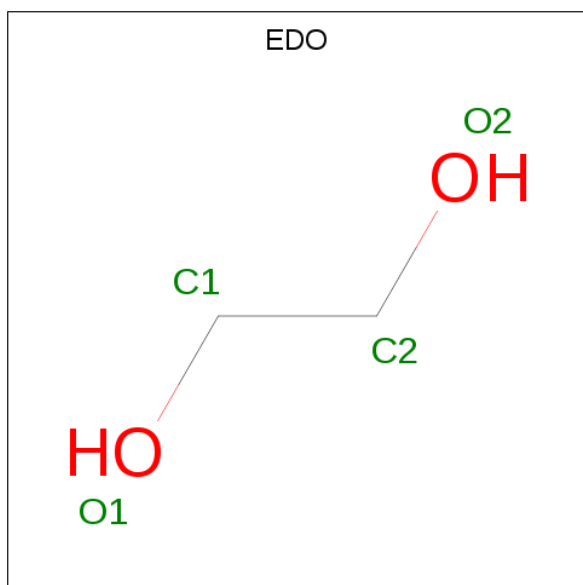
Chain	Residue	Modelled	Actual	Comment	Reference
A	611	SER	-	expression tag	UNP Q86U86
A	612	MET	-	expression tag	UNP Q86U86
B	611	SER	-	expression tag	UNP Q86U86
B	612	MET	-	expression tag	UNP Q86U86
C	611	SER	-	expression tag	UNP Q86U86
C	612	MET	-	expression tag	UNP Q86U86
D	611	SER	-	expression tag	UNP Q86U86
D	612	MET	-	expression tag	UNP Q86U86

- Molecule 2 is (2E)-3-(dimethylamino)-1-(2-hydroxyphenyl)prop-2-en-1-one (three-letter code: 5KL) (formula: C<sub>11</sub>H<sub>13</sub>NO<sub>2</sub>).



Mol	Chain	Residues	Atoms				ZeroOcc	AltConf
			Total	C	N	O		
2	A	1	Total	C	N	O	0	0
			14	11	1	2		
2	B	1	Total	C	N	O	0	0
			14	11	1	2		
2	C	1	Total	C	N	O	0	0
			14	11	1	2		
2	D	1	Total	C	N	O	0	0
			14	11	1	2		

- Molecule 3 is 1,2-ETHANEDIOL (three-letter code: EDO) (formula: C<sub>2</sub>H<sub>6</sub>O<sub>2</sub>).



Mol	Chain	Residues	Atoms			ZeroOcc	AltConf
3	D	1	Total	C	O	0	0
			4	2	2		


- Molecule 4 is water.

Mol	Chain	Residues	Atoms		ZeroOcc	AltConf
4	A	73	Total	O	0	0
			73	73		
4	B	66	Total	O	0	0
			66	66		
4	C	43	Total	O	0	0
			43	43		
4	D	50	Total	O	0	0
			50	50		

### 3 Residue-property plots [i](#)


These plots are drawn for all protein, RNA and DNA chains in the entry. The first graphic for a chain summarises the proportions of the various outlier classes displayed in the second graphic. The second graphic shows the sequence view annotated by issues in geometry and electron density. Residues are color-coded according to the number of geometric quality criteria for which they contain at least one outlier: green = 0, yellow = 1, orange = 2 and red = 3 or more. A red dot above a residue indicates a poor fit to the electron density ( $RSRZ > 2$ ). Stretches of 2 or more consecutive residues without any outlier are shown as a green connector. Residues present in the sample, but not in the model, are shown in grey.

- Molecule 1: Protein polybromo-1

Chain A: 




- Molecule 1: Protein polybromo-1

Chain B: 




- Molecule 1: Protein polybromo-1

Chain C: 



- Molecule 1: Protein polybromo-1

Chain D: 



## 4 Data and refinement statistics

Property	Value	Source
Space group	P 1 21 1	Depositor
Cell constants a, b, c, $\alpha$ , $\beta$ , $\gamma$	40.79Å 135.66Å 56.05Å 90.00° 90.60° 90.00°	Depositor
Resolution (Å)	23.80 – 1.87 23.82 – 1.87	Depositor EDS
% Data completeness (in resolution range)	87.0 (23.80-1.87) 87.0 (23.82-1.87)	Depositor EDS
$R_{merge}$	0.07	Depositor
$R_{sym}$	0.07	Depositor
$\langle I/\sigma(I) \rangle$ <sup>1</sup>	2.73 (at 1.86Å)	Xtrriage
Refinement program	REFMAC 5.5.0110	Depositor
R, $R_{free}$	0.201 , 0.248 0.208 , 0.254	Depositor DCC
$R_{free}$ test set	1782 reflections (4.09%)	wwPDB-VP
Wilson B-factor (Å <sup>2</sup> )	27.2	Xtrriage
Anisotropy	0.200	Xtrriage
Bulk solvent $k_{sol}$ (e/Å <sup>3</sup> ), $B_{sol}$ (Å <sup>2</sup> )	0.34 , 47.4	EDS
L-test for twinning <sup>2</sup>	$\langle  L  \rangle = 0.49$ , $\langle L^2 \rangle = 0.32$	Xtrriage
Estimated twinning fraction	0.049 for h,-k,-l	Xtrriage
$F_o, F_c$ correlation	0.95	EDS
Total number of atoms	3928	wwPDB-VP
Average B, all atoms (Å <sup>2</sup> )	33.0	wwPDB-VP

Xtrriage's analysis on translational NCS is as follows: *The largest off-origin peak in the Patterson function is 9.82% of the height of the origin peak. No significant pseudotranslation is detected.*

<sup>1</sup>Intensities estimated from amplitudes.

<sup>2</sup>Theoretical values of  $\langle |L| \rangle$ ,  $\langle L^2 \rangle$  for acentric reflections are 0.5, 0.333 respectively for untwinned datasets, and 0.375, 0.2 for perfectly twinned datasets.

## 5 Model quality [i](#)

### 5.1 Standard geometry [i](#)

Bond lengths and bond angles in the following residue types are not validated in this section: 5KL, EDO

The Z score for a bond length (or angle) is the number of standard deviations the observed value is removed from the expected value. A bond length (or angle) with  $|Z| > 5$  is considered an outlier worth inspection. RMSZ is the root-mean-square of all Z scores of the bond lengths (or angles).

Mol	Chain	Bond lengths		Bond angles	
		RMSZ	# $ Z  > 5$	RMSZ	# $ Z  > 5$
1	A	0.73	0/939	0.72	1/1264 (0.1%)
1	B	0.77	0/921	0.72	0/1242
1	C	0.64	0/922	0.63	0/1243
1	D	0.70	0/925	0.77	1/1247 (0.1%)
All	All	0.71	0/3707	0.71	2/4996 (0.0%)

There are no bond length outliers.

All (2) bond angle outliers are listed below:

Mol	Chain	Res	Type	Atoms	Z	Observed(°)	Ideal(°)
1	D	646	ARG	NE-CZ-NH2	5.77	123.19	120.30
1	A	642	ASP	CB-CG-OD2	-5.02	113.78	118.30

There are no chirality outliers.

There are no planarity outliers.

### 5.2 Too-close contacts [i](#)

In the following table, the Non-H and H(model) columns list the number of non-hydrogen atoms and hydrogen atoms in the chain respectively. The H(added) column lists the number of hydrogen atoms added and optimized by MolProbity. The Clashes column lists the number of clashes within the asymmetric unit, whereas Symm-Clashes lists symmetry related clashes.

Mol	Chain	Non-H	H(model)	H(added)	Clashes	Symm-Clashes
1	A	919	0	911	4	0
1	B	904	0	877	7	0
1	C	905	0	880	7	0
1	D	908	0	889	8	0
2	A	14	0	0	0	0

*Continued on next page...*



*Continued from previous page...*

Mol	Chain	Non-H	H(model)	H(added)	Clashes	Symm-Clashes
2	B	14	0	0	0	0
2	C	14	0	0	1	0
2	D	14	0	0	0	0
3	D	4	0	6	0	0
4	A	73	0	0	1	0
4	B	66	0	0	1	0
4	C	43	0	0	0	0
4	D	50	0	0	2	0
All	All	3928	0	3563	24	0

The all-atom clashscore is defined as the number of clashes found per 1000 atoms (including hydrogen atoms). The all-atom clashscore for this structure is 3.

All (24) close contacts within the same asymmetric unit are listed below, sorted by their clash magnitude.

Atom-1	Atom-2	Interatomic distance (Å)	Clash overlap (Å)
1:B:630:LEU:HD23	1:B:689:ILE:HD13	1.76	0.67
1:D:623:MET:HG3	1:D:628:GLN:HG3	1.82	0.62
1:D:658:ARG:HG3	4:D:938:HOH:O	2.01	0.61
1:C:630:LEU:CD2	1:C:689:ILE:HD13	2.34	0.57
1:A:694:GLU:OE2	1:D:687:GLN:NE2	2.37	0.57
1:C:630:LEU:HD23	1:C:689:ILE:HD13	1.86	0.57
1:D:668:ILE:HD11	1:D:705:THR:HB	1.90	0.53
1:C:623:MET:HE2	1:C:627:GLN:HB3	1.95	0.49
1:B:638:LYS:HG2	4:B:940:HOH:O	2.13	0.48
1:D:696:PHE:HB3	1:D:724:LEU:HD22	1.94	0.47
1:A:710:GLU:OE1	4:A:901:HOH:O	2.20	0.47
1:B:656:PRO:HG3	1:B:661:LEU:HD12	1.97	0.47
1:A:633:VAL:HG21	1:A:689:ILE:HD11	1.97	0.47
1:D:728:ARG:CD	4:D:902:HOH:O	2.63	0.47
1:D:710:GLU:HA	1:D:715:LYS:NZ	2.29	0.47
1:B:629:LYS:HG2	1:B:689:ILE:HD11	1.97	0.46
1:B:680:HIS:CD2	1:B:685:LYS:HB2	2.52	0.45
1:A:633:VAL:HG21	1:A:689:ILE:CD1	2.47	0.44
1:B:641:THR:HA	1:B:646:ARG:O	2.18	0.44
1:C:623:MET:CE	1:C:627:GLN:HB3	2.47	0.44
1:B:693:VAL:HG13	1:B:724:LEU:HD21	2.00	0.44
1:C:652:PHE:HA	2:C:801:5KL:CAI	2.48	0.44
1:C:697:VAL:HG22	1:C:721:HIS:CE1	2.55	0.42
1:C:721:HIS:CG	1:D:666:LEU:HD11	2.55	0.41

There are no symmetry-related clashes.

## 5.3 Torsion angles [i](#)

### 5.3.1 Protein backbone [i](#)

In the following table, the Percentiles column shows the percent Ramachandran outliers of the chain as a percentile score with respect to all X-ray entries followed by that with respect to entries of similar resolution.

The Analysed column shows the number of residues for which the backbone conformation was analysed, and the total number of residues.

Mol	Chain	Analysed	Favoured	Allowed	Outliers	Percentiles	
1	A	110/124 (89%)	109 (99%)	1 (1%)	0	100	100
1	B	109/124 (88%)	109 (100%)	0	0	100	100
1	C	109/124 (88%)	109 (100%)	0	0	100	100
1	D	109/124 (88%)	109 (100%)	0	0	100	100
All	All	437/496 (88%)	436 (100%)	1 (0%)	0	100	100

There are no Ramachandran outliers to report.

### 5.3.2 Protein sidechains [i](#)

In the following table, the Percentiles column shows the percent sidechain outliers of the chain as a percentile score with respect to all X-ray entries followed by that with respect to entries of similar resolution.

The Analysed column shows the number of residues for which the sidechain conformation was analysed, and the total number of residues.

Mol	Chain	Analysed	Rotameric	Outliers	Percentiles	
1	A	101/116 (87%)	101 (100%)	0	100	100
1	B	96/116 (83%)	93 (97%)	3 (3%)	40	29
1	C	98/116 (84%)	95 (97%)	3 (3%)	40	29
1	D	99/116 (85%)	97 (98%)	2 (2%)	55	47
All	All	394/464 (85%)	386 (98%)	8 (2%)	55	47

All (8) residues with a non-rotameric sidechain are listed below:

Mol	Chain	Res	Type
1	B	638	LYS
1	B	659	SER
1	B	679	SER
1	C	663	ASP
1	C	676	LYS
1	C	728	ARG
1	D	621	LYS
1	D	661	LEU

Some sidechains can be flipped to improve hydrogen bonding and reduce clashes. There are no such sidechains identified.

### 5.3.3 RNA [i](#)

There are no RNA molecules in this entry.

### 5.4 Non-standard residues in protein, DNA, RNA chains [i](#)

There are no non-standard protein/DNA/RNA residues in this entry.

### 5.5 Carbohydrates [i](#)

There are no carbohydrates in this entry.

### 5.6 Ligand geometry [i](#)

5 ligands are modelled in this entry.

In the following table, the Counts columns list the number of bonds (or angles) for which Mogul statistics could be retrieved, the number of bonds (or angles) that are observed in the model and the number of bonds (or angles) that are defined in the Chemical Component Dictionary. The Link column lists molecule types, if any, to which the group is linked. The Z score for a bond length (or angle) is the number of standard deviations the observed value is removed from the expected value. A bond length (or angle) with  $|Z| > 2$  is considered an outlier worth inspection. RMSZ is the root-mean-square of all Z scores of the bond lengths (or angles).

Mol	Type	Chain	Res	Link	Bond lengths			Bond angles		
					Counts	RMSZ	# Z  > 2	Counts	RMSZ	# Z  > 2
2	5KL	B	801	-	14,14,14	2.04	4 (28%)	18,18,18	2.41	3 (16%)
2	5KL	C	801	-	14,14,14	1.81	2 (14%)	18,18,18	2.92	4 (22%)
2	5KL	A	801	-	14,14,14	2.20	3 (21%)	18,18,18	3.74	7 (38%)

Mol	Type	Chain	Res	Link	Bond lengths			Bond angles		
					Counts	RMSZ	# Z  > 2	Counts	RMSZ	# Z  > 2
3	EDO	D	802	-	3,3,3	0.43	0	2,2,2	0.58	0
2	5KL	D	801	-	14,14,14	1.58	3 (21%)	18,18,18	2.71	3 (16%)

In the following table, the Chirals column lists the number of chiral outliers, the number of chiral centers analysed, the number of these observed in the model and the number defined in the Chemical Component Dictionary. Similar counts are reported in the Torsion and Rings columns. '-' means no outliers of that kind were identified.

Mol	Type	Chain	Res	Link	Chirals	Torsions	Rings
2	5KL	B	801	-	-	1/9/9/9	0/1/1/1
2	5KL	C	801	-	-	2/9/9/9	0/1/1/1
2	5KL	A	801	-	-	1/9/9/9	0/1/1/1
3	EDO	D	802	-	-	1/1/1/1	-
2	5KL	D	801	-	-	1/9/9/9	0/1/1/1

All (12) bond length outliers are listed below:

Mol	Chain	Res	Type	Atoms	Z	Observed(Å)	Ideal(Å)
2	A	801	5KL	CAE-CAF	-5.24	1.38	1.47
2	B	801	5KL	CAG-CAF	4.94	1.57	1.48
2	A	801	5KL	CAG-CAF	4.50	1.57	1.48
2	C	801	5KL	CAG-CAF	4.23	1.56	1.48
2	C	801	5KL	CAE-CAF	-4.09	1.40	1.47
2	D	801	5KL	CAG-CAF	3.69	1.55	1.48
2	D	801	5KL	CAE-CAF	-3.31	1.41	1.47
2	A	801	5KL	OAM-CAL	2.72	1.41	1.36
2	B	801	5KL	CAE-CAF	-2.61	1.42	1.47
2	B	801	5KL	CAD-CAE	2.40	1.41	1.36
2	B	801	5KL	CAD-NAB	2.27	1.36	1.33
2	D	801	5KL	CAD-CAE	2.14	1.41	1.36

All (17) bond angle outliers are listed below:

Mol	Chain	Res	Type	Atoms	Z	Observed(°)	Ideal(°)
2	A	801	5KL	CAA-NAB-CAD	-11.67	108.86	121.47
2	D	801	5KL	CAA-NAB-CAD	-10.03	110.63	121.47
2	C	801	5KL	CAA-NAB-CAD	-9.05	111.69	121.47
2	B	801	5KL	CAA-NAB-CAD	-7.68	113.17	121.47
2	A	801	5KL	CAC-NAB-CAD	-7.58	113.28	121.47
2	C	801	5KL	CAC-NAB-CAD	-5.65	115.37	121.47
2	C	801	5KL	CAE-CAD-NAB	-4.85	121.33	127.05
2	B	801	5KL	CAC-NAB-CAD	-4.39	116.72	121.47

Continued on next page...

*Continued from previous page...*

Mol	Chain	Res	Type	Atoms	Z	Observed(°)	Ideal(°)
2	D	801	5KL	CAC-NAB-CAD	-3.59	117.59	121.47
2	B	801	5KL	CAD-CAE-CAF	3.53	123.04	119.75
2	A	801	5KL	CAL-CAG-CAF	-3.40	117.62	119.82
2	A	801	5KL	CAJ-CAK-CAL	3.07	123.93	120.05
2	A	801	5KL	OAN-CAF-CAE	-2.89	116.25	120.76
2	C	801	5KL	CAL-CAG-CAF	-2.89	117.95	119.82
2	A	801	5KL	CAE-CAD-NAB	-2.65	123.92	127.05
2	A	801	5KL	CAG-CAF-CAE	2.16	123.21	120.10
2	D	801	5KL	CAD-CAE-CAF	2.07	121.67	119.75

There are no chirality outliers.

All (6) torsion outliers are listed below:

Mol	Chain	Res	Type	Atoms
2	A	801	5KL	CAE-CAD-NAB-CAC
2	D	801	5KL	CAE-CAD-NAB-CAC
2	B	801	5KL	CAE-CAD-NAB-CAC
2	C	801	5KL	CAE-CAD-NAB-CAC
2	C	801	5KL	CAE-CAD-NAB-CAA
3	D	802	EDO	O1-C1-C2-O2

There are no ring outliers.

1 monomer is involved in 1 short contact:

Mol	Chain	Res	Type	Clashes	Symm-Clashes
2	C	801	5KL	1	0

## 5.7 Other polymers [i](#)

There are no such residues in this entry.

## 5.8 Polymer linkage issues [i](#)

There are no chain breaks in this entry.

## 6 Fit of model and data [i](#)

### 6.1 Protein, DNA and RNA chains [i](#)

In the following table, the column labelled ‘#RSRZ> 2’ contains the number (and percentage) of RSRZ outliers, followed by percent RSRZ outliers for the chain as percentile scores relative to all X-ray entries and entries of similar resolution. The OWAB column contains the minimum, median, 95<sup>th</sup> percentile and maximum values of the occupancy-weighted average B-factor per residue. The column labelled ‘Q< 0.9’ lists the number of (and percentage) of residues with an average occupancy less than 0.9.

Mol	Chain	Analysed	<RSRZ>	#RSRZ>2	OWAB(Å <sup>2</sup> )	Q<0.9
1	A	111/124 (89%)	-0.17	0 <b>100</b> <b>100</b>	16, 27, 47, 64	0
1	B	111/124 (89%)	-0.16	2 (1%) 68 70	15, 29, 51, 75	0
1	C	111/124 (89%)	0.01	1 (0%) 84 85	21, 35, 60, 77	0
1	D	111/124 (89%)	0.22	5 (4%) 33 34	18, 36, 64, 75	0
All	All	444/496 (89%)	-0.03	8 (1%) 68 70	15, 31, 58, 77	0

All (8) RSRZ outliers are listed below:

Mol	Chain	Res	Type	RSRZ
1	D	683	ALA	3.7
1	D	659	SER	3.5
1	D	684	ASN	3.5
1	B	651	ILE	2.4
1	D	682	MET	2.3
1	B	683	ALA	2.3
1	C	643	LYS	2.2
1	D	680	HIS	2.1

### 6.2 Non-standard residues in protein, DNA, RNA chains [i](#)

There are no non-standard protein/DNA/RNA residues in this entry.

### 6.3 Carbohydrates [i](#)

There are no carbohydrates in this entry.

## 6.4 Ligands [i](#)

In the following table, the Atoms column lists the number of modelled atoms in the group and the number defined in the chemical component dictionary. The B-factors column lists the minimum, median, 95<sup>th</sup> percentile and maximum values of B factors of atoms in the group. The column labelled 'Q< 0.9' lists the number of atoms with occupancy less than 0.9.

Mol	Type	Chain	Res	Atoms	RSCC	RSR	B-factors(Å <sup>2</sup> )	Q<0.9
2	5KL	A	801	14/14	0.90	0.16	16,35,59,74	0
2	5KL	D	801	14/14	0.93	0.12	20,33,42,45	0
2	5KL	B	801	14/14	0.94	0.12	13,21,33,38	0
2	5KL	C	801	14/14	0.94	0.13	18,26,33,46	0
3	EDO	D	802	4/4	0.98	0.13	26,29,30,30	0

## 6.5 Other polymers [i](#)

There are no such residues in this entry.