



Full wwPDB EM Validation Report ⓘ

Nov 22, 2022 – 04:40 AM JST

PDB ID : 7E7Q
EMDB ID : EMD-31002
Title : Cryo-EM structure of human ABCA4 in ATP-bound state
Authors : Xie, T.; Zhang, Z.K.; Gong, X.
Deposited on : 2021-02-26
Resolution : 3.30 Å (reported)

This is a Full wwPDB EM Validation Report for a publicly released PDB entry.

We welcome your comments at validation@mail.wwpdb.org

A user guide is available at

<https://www.wwpdb.org/validation/2017/EMValidationReportHelp>

with specific help available everywhere you see the ⓘ symbol.

The types of validation reports are described at

<http://www.wwpdb.org/validation/2017/FAQs#types>.

The following versions of software and data (see [references ⓘ](#)) were used in the production of this report:

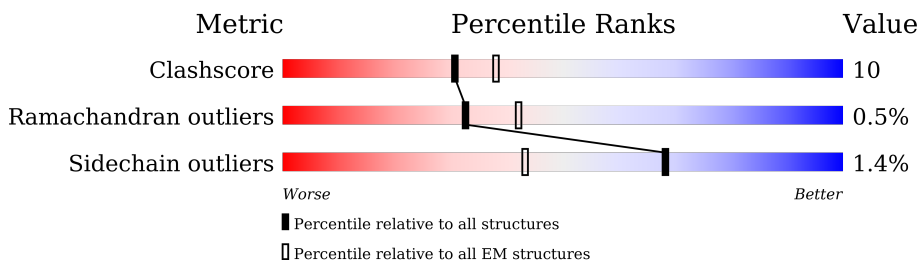
EMDB validation analysis : 0.0.1.dev43
Mogul : 1.8.5 (274361), CSD as541be (2020)
MolProbity : 4.02b-467
buster-report : 1.1.7 (2018)
Percentile statistics : 20191225.v01 (using entries in the PDB archive December 25th 2019)
MapQ : 1.9.9
Ideal geometry (proteins) : Engh & Huber (2001)
Ideal geometry (DNA, RNA) : Parkinson et al. (1996)
Validation Pipeline (wwPDB-VP) : 2.31.3

1 Overall quality at a glance i

The following experimental techniques were used to determine the structure:
ELECTRON MICROSCOPY

The reported resolution of this entry is 3.30 Å.

Percentile scores (ranging between 0-100) for global validation metrics of the entry are shown in the following graphic. The table shows the number of entries on which the scores are based.



Metric	Whole archive (#Entries)	EM structures (#Entries)
Clashscore	158937	4297
Ramachandran outliers	154571	4023
Sidechain outliers	154315	3826

The table below summarises the geometric issues observed across the polymeric chains and their fit to the map. The red, orange, yellow and green segments of the bar indicate the fraction of residues that contain outliers for ≥ 3 , 2, 1 and 0 types of geometric quality criteria respectively. A grey segment represents the fraction of residues that are not modelled. The numeric value for each fraction is indicated below the corresponding segment, with a dot representing fractions $\leq 5\%$. The upper red bar (where present) indicates the fraction of residues that have poor fit to the EM map (all-atom inclusion $< 40\%$). The numeric value is given above the bar.

Mol	Chain	Length	Quality of chain
1	A	2317	
2	D	5	
2	M	5	

2 Entry composition i

There are 5 unique types of molecules in this entry. The entry contains 15279 atoms, of which 0 are hydrogens and 0 are deuteriums.

In the tables below, the AltConf column contains the number of residues with at least one atom in alternate conformation and the Trace column contains the number of residues modelled with at most 2 atoms.

- Molecule 1 is a protein called Retinal-specific phospholipid-transporting ATPase ABCA4.

Mol	Chain	Residues	Atoms					AltConf	Trace
			Total	C	N	O	S		
1	A	1958	14995	9675	2537	2698	85	0	0

There are 46 discrepancies between the modelled and reference sequences:

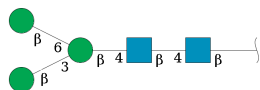
Chain	Residue	Modelled	Actual	Comment	Reference
A	-20	MET	-	expression tag	UNP P78363
A	-19	ALA	-	expression tag	UNP P78363
A	-18	ASP	-	expression tag	UNP P78363
A	-17	TYR	-	expression tag	UNP P78363
A	-16	LYS	-	expression tag	UNP P78363
A	-15	ASP	-	expression tag	UNP P78363
A	-14	ASP	-	expression tag	UNP P78363
A	-13	ASP	-	expression tag	UNP P78363
A	-12	ASP	-	expression tag	UNP P78363
A	-11	LYS	-	expression tag	UNP P78363
A	-10	SER	-	expression tag	UNP P78363
A	-9	GLY	-	expression tag	UNP P78363
A	-8	PRO	-	expression tag	UNP P78363
A	-7	ASP	-	expression tag	UNP P78363
A	-6	GLU	-	expression tag	UNP P78363
A	-5	VAL	-	expression tag	UNP P78363
A	-4	ASP	-	expression tag	UNP P78363
A	-3	ALA	-	expression tag	UNP P78363
A	-2	SER	-	expression tag	UNP P78363
A	-1	GLY	-	expression tag	UNP P78363
A	0	ARG	-	expression tag	UNP P78363
A	1087	GLN	GLU	engineered mutation	UNP P78363
A	2096	GLN	GLU	engineered mutation	UNP P78363
A	2274	LEU	-	expression tag	UNP P78363
A	2275	GLU	-	expression tag	UNP P78363
A	2276	GLY	-	expression tag	UNP P78363
A	2277	SER	-	expression tag	UNP P78363
A	2278	ASP	-	expression tag	UNP P78363

Continued on next page...

Continued from previous page...

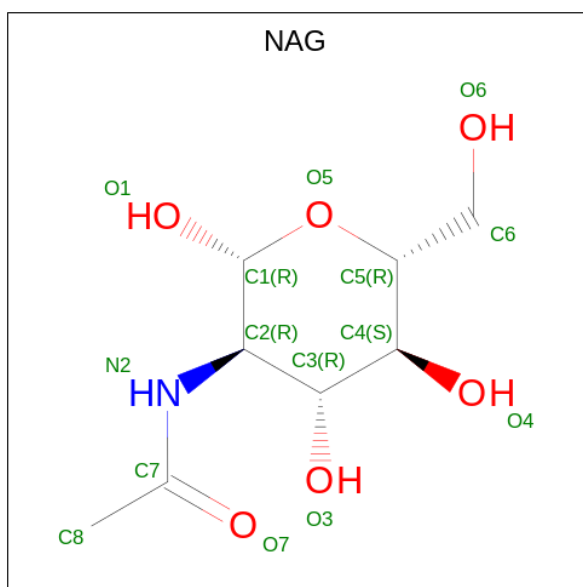
Chain	Residue	Modelled	Actual	Comment	Reference
A	2279	GLU	-	expression tag	UNP P78363
A	2280	VAL	-	expression tag	UNP P78363
A	2281	ASP	-	expression tag	UNP P78363
A	2282	ALA	-	expression tag	UNP P78363
A	2283	VAL	-	expression tag	UNP P78363
A	2284	GLU	-	expression tag	UNP P78363
A	2285	GLY	-	expression tag	UNP P78363
A	2286	SER	-	expression tag	UNP P78363
A	2287	HIS	-	expression tag	UNP P78363
A	2288	HIS	-	expression tag	UNP P78363
A	2289	HIS	-	expression tag	UNP P78363
A	2290	HIS	-	expression tag	UNP P78363
A	2291	HIS	-	expression tag	UNP P78363
A	2292	HIS	-	expression tag	UNP P78363
A	2293	HIS	-	expression tag	UNP P78363
A	2294	HIS	-	expression tag	UNP P78363
A	2295	HIS	-	expression tag	UNP P78363
A	2296	HIS	-	expression tag	UNP P78363

- Molecule 2 is an oligosaccharide called beta-D-mannopyranose-(1-3)-[beta-D-mannopyranose-(1-6)]beta-D-mannopyranose-(1-4)-2-acetamido-2-deoxy-beta-D-glucopyranose-(1-4)-2-acetamido-2-deoxy-beta-D-glucopyranose.



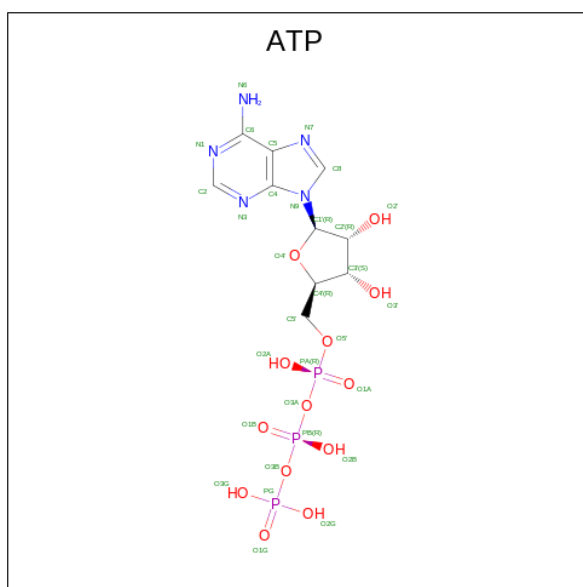
Mol	Chain	Residues	Atoms				AltConf	Trace
			Total	C	N	O		
2	D	5	61	34	2	25	0	0
2	M	5	61	34	2	25	0	0

- Molecule 3 is 2-acetamido-2-deoxy-beta-D-glucopyranose (three-letter code: NAG) (formula: C₈H₁₅NO₆).



Mol	Chain	Residues	Atoms				AltConf
			Total	C	N	O	
3	A	1	98	56	7	35	0
3	A	1	98	56	7	35	0
3	A	1	98	56	7	35	0
3	A	1	98	56	7	35	0
3	A	1	98	56	7	35	0
3	A	1	98	56	7	35	0
3	A	1	98	56	7	35	0

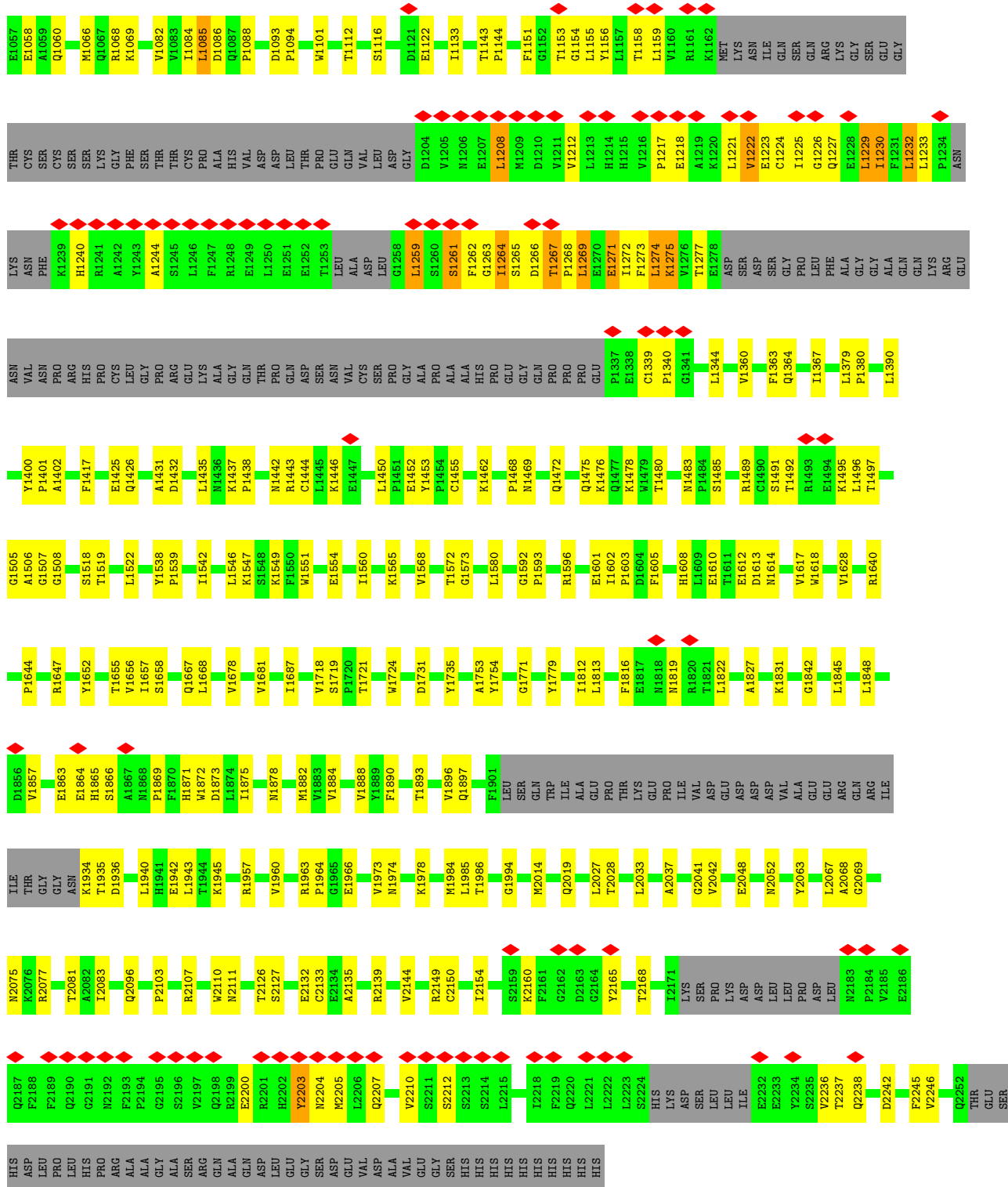
- Molecule 4 is ADENOSINE-5'-TRIPHOSPHATE (three-letter code: ATP) (formula: $C_{10}H_{16}N_5O_{13}P_3$) (labeled as "Ligand of Interest" by depositor).



Mol	Chain	Residues	Atoms				AltConf	
			Total	C	N	O		P
4	A	1	62	20	10	26	6	0
4	A	1	62	20	10	26	6	0

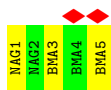
- Molecule 5 is MAGNESIUM ION (three-letter code: MG) (formula: Mg) (labeled as "Ligand of Interest" by depositor).

Mol	Chain	Residues	Atoms		AltConf
			Total	Mg	
5	A	2	2	2	0



● Molecule 2: beta-D-mannopyranose-(1-3)-[beta-D-mannopyranose-(1-6)]beta-D-mannopyranose-(1-4)-2-acetamido-2-deoxy-beta-D-glucopyranose-(1-4)-2-acetamido-2-deoxy-beta-D-glucopyranose





- Molecule 2: beta-D-mannopyranose-(1-3)-[beta-D-mannopyranose-(1-6)]beta-D-mannopyranose-(1-4)-2-acetamido-2-deoxy-beta-D-glucopyranose-(1-4)-2-acetamido-2-deoxy-beta-D-glucopyranose

Chain M: 40% 40% 20%



4 Experimental information

Property	Value	Source
EM reconstruction method	SINGLE PARTICLE	Depositor
Imposed symmetry	POINT, Not provided	
Number of particles used	173278	Depositor
Resolution determination method	FSC 0.143 CUT-OFF	Depositor
CTF correction method	NONE	Depositor
Microscope	FEI TITAN KRIOS	Depositor
Voltage (kV)	300	Depositor
Electron dose ($e^-/\text{\AA}^2$)	50	Depositor
Minimum defocus (nm)	Not provided	
Maximum defocus (nm)	Not provided	
Magnification	Not provided	
Image detector	GATAN K2 SUMMIT (4k x 4k)	Depositor
Maximum map value	0.232	Depositor
Minimum map value	-0.108	Depositor
Average map value	-0.000	Depositor
Map value standard deviation	0.005	Depositor
Recommended contour level	0.026	Depositor
Map size (\AA)	302.40002, 302.40002, 302.40002	wwPDB
Map dimensions	280, 280, 280	wwPDB
Map angles ($^\circ$)	90.0, 90.0, 90.0	wwPDB
Pixel spacing (\AA)	1.08, 1.08, 1.08	Depositor

5 Model quality [i](#)

5.1 Standard geometry [i](#)

Bond lengths and bond angles in the following residue types are not validated in this section: BMA, MG, NAG, ATP

The Z score for a bond length (or angle) is the number of standard deviations the observed value is removed from the expected value. A bond length (or angle) with $|Z| > 5$ is considered an outlier worth inspection. RMSZ is the root-mean-square of all Z scores of the bond lengths (or angles).

Mol	Chain	Bond lengths		Bond angles	
		RMSZ	# Z >5	RMSZ	# Z >5
1	A	0.49	0/15346	0.57	3/20876 (0.0%)

Chiral center outliers are detected by calculating the chiral volume of a chiral center and verifying if the center is modelled as a planar moiety or with the opposite hand. A planarity outlier is detected by checking planarity of atoms in a peptide group, atoms in a mainchain group or atoms of a sidechain that are expected to be planar.

Mol	Chain	#Chirality outliers	#Planarity outliers
1	A	0	1

There are no bond length outliers.

All (3) bond angle outliers are listed below:

Mol	Chain	Res	Type	Atoms	Z	Observed($^{\circ}$)	Ideal($^{\circ}$)
1	A	1522	LEU	CA-CB-CG	6.52	130.30	115.30
1	A	980	LEU	CA-CB-CG	5.30	127.49	115.30
1	A	1085	LEU	CA-CB-CG	5.01	126.83	115.30

There are no chirality outliers.

All (1) planarity outliers are listed below:

Mol	Chain	Res	Type	Group
1	A	924	GLY	Peptide

5.2 Too-close contacts [i](#)

In the following table, the Non-H and H(model) columns list the number of non-hydrogen atoms and hydrogen atoms in the chain respectively. The H(added) column lists the number of hydrogen atoms added and optimized by MolProbity. The Clashes column lists the number of clashes within

the asymmetric unit, whereas Symm-Clashes lists symmetry-related clashes.

Mol	Chain	Non-H	H(model)	H(added)	Clashes	Symm-Clashes
1	A	14995	0	14514	291	0
2	D	61	0	52	0	0
2	M	61	0	52	1	0
3	A	98	0	91	3	0
4	A	62	0	24	0	0
5	A	2	0	0	0	0
All	All	15279	0	14733	294	0

The all-atom clashscore is defined as the number of clashes found per 1000 atoms (including hydrogen atoms). The all-atom clashscore for this structure is 10.

All (294) close contacts within the same asymmetric unit are listed below, sorted by their clash magnitude.

Atom-1	Atom-2	Interatomic distance (Å)	Clash overlap (Å)
1:A:1155:LEU:HD23	1:A:1264:ILE:CD1	1.19	1.64
1:A:1151:PHE:CD2	1:A:1272:ILE:HD11	1.19	1.61
1:A:1151:PHE:HB2	1:A:1272:ILE:CD1	1.48	1.42
1:A:1151:PHE:CG	1:A:1272:ILE:HD11	1.57	1.39
1:A:1156:TYR:CZ	1:A:1232:LEU:HD12	1.62	1.35
1:A:1151:PHE:CD2	1:A:1272:ILE:CD1	2.11	1.32
1:A:1151:PHE:CB	1:A:1272:ILE:CD1	2.09	1.29
1:A:1225:ILE:HD11	1:A:2111:ASN:OD1	1.31	1.28
1:A:1156:TYR:CE1	1:A:1232:LEU:HD12	1.70	1.26
1:A:1156:TYR:CZ	1:A:1232:LEU:CD1	2.20	1.23
1:A:1151:PHE:CG	1:A:1272:ILE:CD1	2.21	1.23
1:A:1155:LEU:CD2	1:A:1264:ILE:CD1	2.15	1.22
1:A:1151:PHE:CB	1:A:1272:ILE:HD12	1.69	1.20
1:A:1155:LEU:CD2	1:A:1264:ILE:HD11	1.74	1.14
1:A:1226:GLY:O	1:A:2135:ALA:O	1.68	1.12
1:A:1155:LEU:HD23	1:A:1264:ILE:HD12	1.25	1.11
1:A:1159:LEU:HB3	1:A:1259:LEU:HD13	1.34	1.09
1:A:1225:ILE:CD1	1:A:2111:ASN:OD1	2.00	1.08
1:A:1154:GLY:O	1:A:1266:ASP:O	1.74	1.05
1:A:1155:LEU:HD23	1:A:1264:ILE:HD11	1.00	0.96
1:A:1151:PHE:HB2	1:A:1272:ILE:HD13	1.48	0.95
1:A:1151:PHE:HB2	1:A:1272:ILE:HD12	1.35	0.94
1:A:1155:LEU:HD23	1:A:1264:ILE:HD13	1.53	0.83
1:A:1151:PHE:CB	1:A:1272:ILE:HD11	1.93	0.81
1:A:2168:THR:HG22	1:A:2207:GLN:HG3	1.62	0.81
1:A:1223:GLU:H	1:A:1230:ILE:HG22	1.42	0.81

Continued on next page...

Continued from previous page...

Atom-1	Atom-2	Interatomic distance (Å)	Clash overlap (Å)
1:A:2150:CYS:SG	1:A:2160:LYS:NZ	2.53	0.80
1:A:1156:TYR:CE1	1:A:1232:LEU:CD1	2.55	0.79
1:A:1735:TYR:CE2	1:A:1771:GLY:HA3	2.22	0.75
1:A:1156:TYR:OH	1:A:1232:LEU:CD1	2.35	0.74
1:A:1264:ILE:O	1:A:2236:VAL:O	2.06	0.73
1:A:2048:GLU:OE2	1:A:2052:ASN:ND2	2.22	0.73
1:A:1813:LEU:HG	1:A:1822:LEU:HD12	1.68	0.73
1:A:1151:PHE:HD2	1:A:1272:ILE:HD11	0.96	0.73
1:A:1506:ALA:O	1:A:1508:GLY:N	2.22	0.73
1:A:922:HIS:HD2	1:A:923:PRO:HD2	1.54	0.72
1:A:1054:LYS:O	1:A:1056:ASN:N	2.22	0.72
1:A:1223:GLU:N	1:A:1230:ILE:HG22	2.05	0.72
1:A:1156:TYR:CZ	1:A:1232:LEU:HD11	2.24	0.71
1:A:1731:ASP:OD2	1:A:1779:TYR:OH	2.07	0.71
1:A:1261:SER:HB2	1:A:2238:GLN:HG2	1.69	0.71
1:A:101:ILE:HD11	1:A:322:LEU:HD12	1.71	0.71
1:A:101:ILE:HG22	1:A:104:ARG:HH11	1.56	0.70
1:A:1339:CYS:SG	1:A:1340:PRO:HD3	2.31	0.69
1:A:1151:PHE:HB3	1:A:1272:ILE:HD12	1.70	0.69
1:A:1437:LYS:HB2	1:A:1438:PRO:HD3	1.75	0.68
1:A:364:ARG:HE	1:A:365:ARG:H	1.39	0.68
1:A:42:LEU:HD21	1:A:1812:ILE:HG21	1.76	0.68
1:A:1223:GLU:N	1:A:1230:ILE:CG2	2.57	0.68
1:A:1151:PHE:CD2	1:A:1272:ILE:CG1	2.78	0.66
1:A:834:PHE:HA	1:A:838:LEU:HD12	1.76	0.66
1:A:587:ARG:NH1	1:A:784:ASP:OD1	2.28	0.66
1:A:1863:GLU:HG2	1:A:1864:GLU:H	1.60	0.66
1:A:1151:PHE:HD2	1:A:1272:ILE:CD1	1.80	0.66
1:A:1222:VAL:HG12	1:A:1230:ILE:HG21	1.79	0.65
1:A:1538:TYR:OH	1:A:1554:GLU:OE2	2.15	0.65
1:A:2027:LEU:O	1:A:2028:THR:HG23	1.97	0.64
1:A:1443:ARG:O	1:A:1443:ARG:HG2	1.98	0.64
1:A:1432:ASP:OD2	1:A:1437:LYS:NZ	2.27	0.64
1:A:645:ASP:OD1	1:A:646:SER:N	2.30	0.64
1:A:1151:PHE:CG	1:A:1272:ILE:HD12	2.11	0.63
1:A:1155:LEU:HB3	1:A:1264:ILE:HD11	1.81	0.63
1:A:43:ARG:HD3	1:A:647:PHE:CE2	2.34	0.63
1:A:403:ASP:OD1	1:A:527:SER:HB2	1.99	0.62
1:A:1212:VAL:HG12	1:A:1212:VAL:O	1.99	0.62
1:A:1101:TRP:NE1	1:A:1122:GLU:OE1	2.26	0.62
1:A:48:LEU:HD12	1:A:1496:LEU:HD21	1.80	0.62

Continued on next page...

Continued from previous page...

Atom-1	Atom-2	Interatomic distance (Å)	Clash overlap (Å)
1:A:1155:LEU:CD2	1:A:1264:ILE:HD12	2.09	0.62
1:A:1485:SER:OG	1:A:1505:GLY:O	2.18	0.62
1:A:1208:LEU:HD13	1:A:1208:LEU:N	2.15	0.61
1:A:380:ASN:O	1:A:382:LEU:N	2.33	0.61
1:A:1417:PHE:CZ	1:A:1435:LEU:HD21	2.35	0.61
1:A:624:VAL:HG12	1:A:626:ALA:H	1.65	0.61
1:A:1010:GLN:O	1:A:1068:ARG:NH2	2.29	0.60
1:A:1240:HIS:O	1:A:1244:ALA:CB	2.49	0.60
1:A:1158:THR:O	1:A:1262:PHE:CB	2.50	0.59
1:A:936:LYS:HE3	1:A:980:LEU:HD13	1.83	0.59
1:A:1593:PRO:HA	1:A:1596:ARG:NH2	2.18	0.58
1:A:1942:GLU:HG2	1:A:1957:ARG:HB3	1.84	0.58
3:A:2305:NAG:H3	3:A:2305:NAG:H83	1.84	0.58
1:A:1819:ASN:HB3	1:A:1822:LEU:HD23	1.84	0.58
1:A:299:VAL:HG22	1:A:318:ILE:HG23	1.85	0.58
1:A:2203:TYR:O	1:A:2205:MET:N	2.36	0.58
1:A:399:LEU:HD23	1:A:526:GLU:HB2	1.86	0.58
1:A:946:VAL:HG13	1:A:949:LEU:HD13	1.85	0.57
1:A:1936:ASP:HA	1:A:1964:PRO:HD3	1.86	0.57
1:A:423:HIS:ND1	1:A:1601:GLU:OE1	2.36	0.57
1:A:442:PHE:HB3	1:A:499:TRP:CZ2	2.40	0.57
1:A:811:ARG:HA	1:A:814:GLU:HG2	1.86	0.57
1:A:1644:PRO:HG2	1:A:1647:ARG:HG3	1.85	0.57
1:A:1724:TRP:NE1	1:A:1897:GLN:OE1	2.27	0.56
1:A:1986:THR:HA	1:A:2014:MET:HE1	1.87	0.56
1:A:1058:GLU:OE1	1:A:1060:GLN:NE2	2.39	0.56
1:A:1086:ASP:HB2	1:A:1116:SER:HB3	1.87	0.56
1:A:939:GLU:HB2	1:A:940:PRO:HD3	1.87	0.56
1:A:1156:TYR:CE2	1:A:1232:LEU:CD1	2.86	0.56
1:A:80:PRO:HB2	1:A:331:GLY:HA3	1.88	0.56
1:A:953:PHE:CD1	1:A:959:THR:HG21	2.40	0.56
1:A:110:GLN:O	1:A:115:ASN:ND2	2.31	0.56
1:A:1431:ALA:O	1:A:1435:LEU:HD13	2.04	0.56
1:A:953:PHE:HD1	1:A:959:THR:HG21	1.71	0.56
1:A:961:PHE:CZ	1:A:1133:ILE:HD11	2.40	0.56
1:A:1492:THR:HB	1:A:1495:LYS:HB3	1.88	0.55
1:A:511:ARG:O	1:A:515:GLN:HG2	2.07	0.55
1:A:1156:TYR:CE2	1:A:1232:LEU:HD12	2.31	0.55
1:A:1227:GLN:O	1:A:1227:GLN:HG2	2.06	0.55
1:A:1668:LEU:HD11	1:A:1857:VAL:HG23	1.89	0.55
1:A:2033:LEU:HD23	1:A:2083:ILE:HG22	1.89	0.55

Continued on next page...

Continued from previous page...

Atom-1	Atom-2	Interatomic distance (Å)	Clash overlap (Å)
1:A:1719:SER:O	1:A:1721:THR:N	2.40	0.55
1:A:36:PHE:CE2	1:A:715:LEU:HD11	2.42	0.55
1:A:433:GLU:OE2	1:A:1592:GLY:HA3	2.07	0.55
2:M:2:NAG:H3	2:M:2:NAG:H83	1.89	0.55
1:A:570:LYS:HG2	1:A:1657:ILE:HB	1.88	0.54
1:A:371:ASN:HA	1:A:374:ILE:HG12	1.89	0.54
1:A:127:THR:O	1:A:131:ILE:HG13	2.06	0.54
1:A:431:TRP:NE1	1:A:507:ASP:OD1	2.39	0.54
1:A:1878:ASN:O	1:A:1882:MET:HG2	2.08	0.54
1:A:2203:TYR:C	1:A:2205:MET:H	2.11	0.54
1:A:381:PRO:HA	1:A:384:LYS:HD2	1.90	0.54
1:A:797:LEU:O	1:A:800:VAL:HG22	2.08	0.54
1:A:2019:GLN:HG3	1:A:2096:GLN:HG3	1.90	0.54
1:A:1054:LYS:C	1:A:1056:ASN:H	2.10	0.53
1:A:1468:PRO:HB2	1:A:1472:GLN:HE22	1.74	0.53
1:A:364:ARG:HG3	1:A:365:ARG:H	1.73	0.53
1:A:977:THR:HG23	1:A:1005:LEU:HD21	1.89	0.53
1:A:297:LEU:HA	1:A:300:THR:HG22	1.90	0.53
1:A:628:ALA:HB2	1:A:1426:GLN:NE2	2.23	0.53
1:A:1437:LYS:CB	1:A:1438:PRO:HD3	2.38	0.53
1:A:1572:THR:OG1	1:A:1573:GLY:N	2.40	0.53
1:A:105:VAL:HG21	1:A:296:LEU:HD12	1.91	0.52
1:A:1940:LEU:HD12	1:A:1960:VAL:HG22	1.90	0.52
1:A:46:ASN:ND2	1:A:1816:PHE:HE2	2.08	0.52
1:A:1223:GLU:H	1:A:1230:ILE:CG2	2.15	0.52
1:A:922:HIS:HD2	1:A:923:PRO:CD	2.20	0.51
1:A:1049:THR:O	1:A:1069:LYS:HD3	2.11	0.51
1:A:36:PHE:O	1:A:40:ILE:HG12	2.11	0.51
1:A:310:GLU:H	1:A:314:LYS:HE3	1.75	0.51
1:A:1155:LEU:HA	1:A:1265:SER:O	2.09	0.51
1:A:1229:LEU:HD12	1:A:1230:ILE:H	1.76	0.51
1:A:420:GLU:OE2	1:A:1608:HIS:ND1	2.44	0.51
1:A:922:HIS:CD2	1:A:923:PRO:HD2	2.40	0.51
1:A:1360:VAL:O	1:A:1364:GLN:HG2	2.10	0.51
1:A:2110:TRP:CZ2	1:A:2132:GLU:HB3	2.46	0.51
1:A:1565:LYS:HG3	1:A:1612:GLU:O	2.11	0.50
1:A:569:TYR:CZ	1:A:1656:VAL:HG12	2.46	0.50
1:A:1269:LEU:HD13	1:A:1269:LEU:O	2.11	0.50
1:A:1480:THR:HG23	1:A:1483:ASN:H	1.77	0.50
1:A:33:LEU:HD21	1:A:714:LEU:HB3	1.93	0.50
1:A:1156:TYR:CZ	1:A:1271:GLU:HG2	2.47	0.50

Continued on next page...

Continued from previous page...

Atom-1	Atom-2	Interatomic distance (Å)	Clash overlap (Å)
1:A:1973:VAL:HG22	1:A:1974:ASN:H	1.77	0.50
1:A:1940:LEU:HD21	1:A:1985:LEU:HD21	1.93	0.50
1:A:1363:PHE:O	1:A:1367:ILE:HG12	2.11	0.49
1:A:1827:ALA:O	1:A:1831:LYS:NZ	2.32	0.49
1:A:416:SER:O	1:A:420:GLU:HG2	2.11	0.49
1:A:1872:TRP:O	1:A:1872:TRP:CD1	2.66	0.49
1:A:1240:HIS:O	1:A:1244:ALA:HB3	2.13	0.49
1:A:370:CYS:O	1:A:374:ILE:HG23	2.12	0.49
1:A:445:SER:CB	1:A:448:MET:H	2.26	0.49
1:A:1469:ASN:HB2	3:A:2305:NAG:O5	2.12	0.49
1:A:1155:LEU:HG	1:A:1265:SER:O	2.12	0.49
1:A:1240:HIS:O	1:A:1244:ALA:N	2.41	0.49
1:A:364:ARG:HE	1:A:365:ARG:N	2.09	0.49
1:A:1402:ALA:O	1:A:1658:SER:O	2.31	0.49
1:A:712:ILE:HD12	1:A:737:LEU:HB3	1.95	0.48
1:A:612:GLN:O	1:A:616:GLU:HG2	2.13	0.48
1:A:1151:PHE:HB3	1:A:1275:LYS:HD2	1.95	0.48
1:A:1966:GLU:OE1	1:A:2139:ARG:NH2	2.46	0.48
1:A:1869:PRO:O	1:A:1875:ILE:HG12	2.14	0.48
1:A:2077:ARG:O	1:A:2081:THR:HG23	2.14	0.48
1:A:812:PHE:CE1	1:A:828:PRO:HG3	2.48	0.48
1:A:1052:HIS:O	1:A:1053:HIS:HB2	2.13	0.48
1:A:1425:GLU:CD	1:A:1426:GLN:H	2.17	0.48
1:A:630:VAL:HG13	1:A:1614:ASN:HA	1.95	0.47
1:A:1227:GLN:HE22	1:A:2154:ILE:HD12	1.79	0.47
1:A:2067:LEU:O	1:A:2069:GLY:N	2.47	0.47
1:A:401:THR:HB	1:A:402:PRO:HD3	1.97	0.47
1:A:1085:LEU:HD13	1:A:1088:PRO:HB3	1.95	0.47
1:A:1273:PHE:C	1:A:1273:PHE:CD2	2.87	0.47
1:A:1450:LEU:O	1:A:1452:GLU:N	2.42	0.47
1:A:1613:ASP:N	1:A:1613:ASP:OD1	2.48	0.47
1:A:302:PRO:HA	1:A:305:GLN:HG2	1.97	0.47
1:A:2242:ASP:O	1:A:2246:VAL:HG23	2.14	0.47
1:A:1272:ILE:O	1:A:1272:ILE:HG13	2.15	0.46
1:A:1893:THR:HA	1:A:1896:VAL:HG12	1.96	0.46
1:A:635:GLN:O	1:A:1618:TRP:HA	2.14	0.46
1:A:768:ILE:HA	1:A:771:THR:HG22	1.97	0.46
1:A:1033:LYS:HD3	1:A:1037:GLU:OE1	2.15	0.46
1:A:1546:LEU:HA	1:A:1549:LYS:O	2.15	0.46
1:A:52:HIS:ND1	1:A:53:GLU:O	2.46	0.46
1:A:410:ILE:HD11	1:A:563:LEU:HD21	1.98	0.46

Continued on next page...

Continued from previous page...

Atom-1	Atom-2	Interatomic distance (Å)	Clash overlap (Å)
1:A:692:SER:HB3	1:A:695:VAL:HG23	1.97	0.46
1:A:1678:VAL:O	1:A:1681:VAL:HG22	2.15	0.46
1:A:1753:ALA:HB1	1:A:1848:LEU:O	2.16	0.46
1:A:1159:LEU:CB	1:A:1259:LEU:HD13	2.25	0.46
1:A:19:LYS:HE2	1:A:19:LYS:HB2	1.81	0.46
1:A:1155:LEU:CB	1:A:1264:ILE:HD11	2.44	0.46
1:A:1754:TYR:OH	1:A:1845:LEU:O	2.31	0.46
1:A:1230:ILE:HD12	1:A:1230:ILE:HA	1.70	0.46
1:A:1265:SER:OG	1:A:1266:ASP:N	2.47	0.46
3:A:2306:NAG:O7	3:A:2306:NAG:O3	2.27	0.45
1:A:2144:VAL:HG21	1:A:2149:ARG:CZ	2.46	0.45
1:A:302:PRO:HB2	1:A:314:LYS:HZ3	1.81	0.45
1:A:670:THR:O	1:A:674:ILE:HG12	2.17	0.45
1:A:1871:HIS:C	1:A:1873:ASP:H	2.20	0.45
1:A:400:TYR:CZ	1:A:527:SER:HB3	2.51	0.45
1:A:601:PHE:CD1	1:A:604:ILE:HD12	2.51	0.45
1:A:36:PHE:HE2	1:A:715:LEU:HD11	1.80	0.45
1:A:2165:TYR:O	1:A:2210:VAL:HG22	2.17	0.45
1:A:61:MET:HB3	1:A:613:ASP:OD2	2.17	0.45
1:A:811:ARG:NH1	1:A:814:GLU:OE2	2.50	0.45
1:A:596:ASP:OD1	1:A:597:PRO:HD2	2.16	0.45
1:A:1007:MET:HA	1:A:1084:ILE:O	2.17	0.45
1:A:1344:LEU:HA	1:A:2041:GLY:HA3	1.98	0.45
1:A:1719:SER:O	1:A:1719:SER:OG	2.27	0.45
1:A:112:LEU:O	1:A:283:ARG:NH2	2.50	0.44
1:A:1263:GLY:HA3	1:A:2237:THR:OG1	2.16	0.44
1:A:1934:LYS:HG2	1:A:1935:THR:H	1.82	0.44
1:A:578:VAL:O	1:A:1667:GLN:NE2	2.51	0.44
1:A:628:ALA:HB2	1:A:1426:GLN:HE21	1.82	0.44
1:A:1978:LYS:HD2	1:A:2126:THR:HG23	1.99	0.44
1:A:10:LEU:HB3	1:A:699:THR:HG21	1.99	0.44
1:A:101:ILE:HD12	1:A:296:LEU:HA	1.99	0.44
1:A:1475:GLN:N	1:A:1475:GLN:OE1	2.51	0.44
1:A:1687:ILE:HD11	1:A:1842:GLY:HA2	1.99	0.44
1:A:284:ILE:O	1:A:288:ILE:HG12	2.18	0.44
1:A:672:LYS:HE3	1:A:672:LYS:HB3	1.73	0.44
1:A:1273:PHE:CD2	1:A:1273:PHE:O	2.70	0.44
1:A:400:TYR:HA	1:A:551:VAL:O	2.18	0.44
1:A:1208:LEU:N	1:A:1208:LEU:CD1	2.81	0.44
1:A:1446:LYS:HE3	1:A:1446:LYS:HB2	1.68	0.44
1:A:1462:LYS:HB2	1:A:1462:LYS:HE2	1.80	0.43

Continued on next page...

Continued from previous page...

Atom-1	Atom-2	Interatomic distance (Å)	Clash overlap (Å)
1:A:1051:LEU:HD21	1:A:1066:MET:HB3	2.01	0.43
1:A:1539:PRO:O	1:A:1542:ILE:HG22	2.18	0.43
1:A:1156:TYR:OH	1:A:1232:LEU:HD13	2.17	0.43
1:A:1601:GLU:OE1	1:A:1605:PHE:HB2	2.19	0.43
1:A:1884:VAL:O	1:A:1888:VAL:HG23	2.18	0.43
1:A:1223:GLU:N	1:A:1230:ILE:HG21	2.34	0.43
1:A:1450:LEU:HD23	1:A:1450:LEU:HA	1.86	0.43
1:A:1890:PHE:O	1:A:1893:THR:HG22	2.19	0.43
1:A:1019:THR:HG22	1:A:1020:VAL:N	2.34	0.43
1:A:1602:ILE:N	1:A:1603:PRO:HD2	2.34	0.43
1:A:2127:SER:OG	1:A:2133:CYS:SG	2.77	0.43
1:A:1443:ARG:CZ	1:A:1453:TYR:HB3	2.49	0.42
1:A:2203:TYR:C	1:A:2205:MET:N	2.72	0.42
1:A:1143:THR:CG2	1:A:1144:PRO:HD2	2.49	0.42
1:A:48:LEU:HD23	1:A:48:LEU:HA	1.84	0.42
1:A:2200:GLU:HG2	1:A:2207:GLN:HB3	2.01	0.42
1:A:364:ARG:HG3	1:A:365:ARG:N	2.33	0.42
1:A:1417:PHE:HA	1:A:1560:ILE:O	2.20	0.42
1:A:314:LYS:O	1:A:318:ILE:HG13	2.19	0.42
1:A:1082:VAL:HG13	1:A:1112:THR:HG23	2.02	0.42
1:A:1155:LEU:CG	1:A:1264:ILE:HD11	2.46	0.42
1:A:1568:VAL:HG22	1:A:1610:GLU:HB3	2.01	0.42
1:A:1400:TYR:HA	1:A:1401:PRO:HD3	1.87	0.42
1:A:1491:SER:HB2	1:A:1497:THR:H	1.85	0.42
1:A:2103:PRO:O	1:A:2107:ARG:HG2	2.20	0.42
1:A:1390:LEU:HD23	1:A:1390:LEU:HA	1.91	0.42
1:A:1647:ARG:NH2	1:A:1652:TYR:OH	2.52	0.41
1:A:2165:TYR:CD2	1:A:2212:SER:HA	2.54	0.41
1:A:1518:SER:O	1:A:1519:THR:OG1	2.31	0.41
1:A:812:PHE:CZ	1:A:828:PRO:HG3	2.56	0.41
1:A:1085:LEU:HD12	1:A:1085:LEU:O	2.20	0.41
1:A:1208:LEU:HD21	1:A:1259:LEU:HD21	2.02	0.41
1:A:1268:PRO:HG2	1:A:1271:GLU:HB2	2.02	0.41
1:A:1560:ILE:HD12	1:A:1617:VAL:HG12	2.02	0.41
1:A:830:GLU:HG3	1:A:1551:TRP:CE2	2.55	0.41
1:A:1094:PRO:HD2	1:A:2245:PHE:CE1	2.55	0.41
1:A:1438:PRO:HG2	1:A:1640:ARG:HD3	2.03	0.41
1:A:1945:LYS:HB2	1:A:1984:MET:SD	2.60	0.41
1:A:276:ILE:HD12	1:A:276:ILE:HA	1.91	0.41
1:A:1153:THR:HG23	1:A:1267:THR:HB	2.03	0.41
1:A:1221:LEU:HD11	1:A:1224:CYS:HB3	2.02	0.41

Continued on next page...

Continued from previous page...

Atom-1	Atom-2	Interatomic distance (Å)	Clash overlap (Å)
1:A:1379:LEU:HB3	1:A:1380:PRO:HD3	2.01	0.41
1:A:1718:VAL:HG12	1:A:1718:VAL:O	2.19	0.41
1:A:1469:ASN:HA	1:A:1472:GLN:OE1	2.21	0.41
1:A:1943:LEU:HA	1:A:1994:GLY:HA3	2.03	0.41
1:A:686:LEU:HD23	1:A:686:LEU:HA	1.87	0.41
1:A:809:LEU:HA	1:A:819:LEU:HD21	2.03	0.41
1:A:1093:ASP:N	1:A:1093:ASP:OD1	2.54	0.41
1:A:1580:LEU:HD23	1:A:1580:LEU:HA	1.94	0.41
1:A:2037:ALA:HB1	1:A:2042:VAL:HG11	2.03	0.41
1:A:575:ILE:HD12	1:A:575:ILE:HA	1.94	0.40
1:A:1068:ARG:O	1:A:1068:ARG:HG3	2.20	0.40
1:A:1222:VAL:HG12	1:A:1230:ILE:CG2	2.49	0.40
1:A:833:GLU:OE1	1:A:833:GLU:N	2.52	0.40
1:A:1275:LYS:HB2	1:A:1275:LYS:HE2	1.73	0.40
1:A:1442:ASN:HD22	1:A:1655:THR:HG22	1.86	0.40
1:A:1472:GLN:O	1:A:1476:LYS:CB	2.70	0.40
1:A:1443:ARG:HD3	1:A:1518:SER:HA	2.03	0.40
1:A:2063:TYR:OH	1:A:2075:ASN:OD1	2.37	0.40
1:A:587:ARG:NH2	1:A:588:TYR:OH	2.54	0.40
1:A:1274:LEU:HD13	1:A:1274:LEU:HA	1.83	0.40
1:A:1628:VAL:H	1:A:1628:VAL:HG22	1.68	0.40
1:A:1865:HIS:ND1	1:A:1866:SER:O	2.55	0.40

There are no symmetry-related clashes.

5.3 Torsion angles [i](#)

5.3.1 Protein backbone [i](#)

In the following table, the Percentiles column shows the percent Ramachandran outliers of the chain as a percentile score with respect to all PDB entries followed by that with respect to all EM entries.

The Analysed column shows the number of residues for which the backbone conformation was analysed, and the total number of residues.

Mol	Chain	Analysed	Favoured	Allowed	Outliers	Percentiles
1	A	1926/2317 (83%)	1702 (88%)	215 (11%)	9 (0%)	29 61

All (9) Ramachandran outliers are listed below:

Mol	Chain	Res	Type
1	A	1055	ARG
1	A	1217	PRO
1	A	2204	ASN
1	A	1507	GLY
1	A	2068	ALA
1	A	2203	TYR
1	A	925	TRP
1	A	1218	GLU
1	A	1455	CYS

5.3.2 Protein sidechains [i](#)

In the following table, the Percentiles column shows the percent sidechain outliers of the chain as a percentile score with respect to all PDB entries followed by that with respect to all EM entries.

The Analysed column shows the number of residues for which the sidechain conformation was analysed, and the total number of residues.

Mol	Chain	Analysed	Rotameric	Outliers	Percentiles
1	A	1552/2027 (77%)	1530 (99%)	22 (1%)	67 82

All (22) residues with a non-rotameric sidechain are listed below:

Mol	Chain	Res	Type
1	A	500	ARG
1	A	1053	HIS
1	A	1208	LEU
1	A	1222	VAL
1	A	1229	LEU
1	A	1230	ILE
1	A	1232	LEU
1	A	1233	LEU
1	A	1259	LEU
1	A	1261	SER
1	A	1264	ILE
1	A	1267	THR
1	A	1269	LEU
1	A	1271	GLU
1	A	1274	LEU
1	A	1275	LYS
1	A	1277	THR
1	A	1444	CYS

Continued on next page...

Continued from previous page...

Mol	Chain	Res	Type
1	A	1478	LYS
1	A	1489	ARG
1	A	1547	LYS
1	A	1963	ARG

Sometimes sidechains can be flipped to improve hydrogen bonding and reduce clashes. All (2) such sidechains are listed below:

Mol	Chain	Res	Type
1	A	922	HIS
1	A	1227	GLN

5.3.3 RNA [i](#)

There are no RNA molecules in this entry.

5.4 Non-standard residues in protein, DNA, RNA chains [i](#)

There are no non-standard protein/DNA/RNA residues in this entry.

5.5 Carbohydrates [i](#)

10 monosaccharides are modelled in this entry.

In the following table, the Counts columns list the number of bonds (or angles) for which Mogul statistics could be retrieved, the number of bonds (or angles) that are observed in the model and the number of bonds (or angles) that are defined in the Chemical Component Dictionary. The Link column lists molecule types, if any, to which the group is linked. The Z score for a bond length (or angle) is the number of standard deviations the observed value is removed from the expected value. A bond length (or angle) with $|Z| > 2$ is considered an outlier worth inspection. RMSZ is the root-mean-square of all Z scores of the bond lengths (or angles).

Mol	Type	Chain	Res	Link	Bond lengths			Bond angles		
					Counts	RMSZ	$\# Z > 2$	Counts	RMSZ	$\# Z > 2$
2	NAG	D	1	1,2	14,14,15	0.64	0	17,19,21	0.87	1 (5%)
2	NAG	D	2	2	14,14,15	0.39	0	17,19,21	0.54	0
2	BMA	D	3	2	11,11,12	0.83	0	15,15,17	0.94	1 (6%)
2	BMA	D	4	2	11,11,12	0.57	0	15,15,17	0.97	0
2	BMA	D	5	2	11,11,12	0.52	0	15,15,17	0.94	1 (6%)
2	NAG	M	1	1,2	14,14,15	0.45	0	17,19,21	0.55	0
2	NAG	M	2	2	14,14,15	0.39	0	17,19,21	1.49	3 (17%)

Mol	Type	Chain	Res	Link	Bond lengths			Bond angles		
					Counts	RMSZ	# Z > 2	Counts	RMSZ	# Z > 2
2	BMA	M	3	2	11,11,12	0.84	1 (9%)	15,15,17	0.70	0
2	BMA	M	4	2	11,11,12	0.60	0	15,15,17	1.30	2 (13%)
2	BMA	M	5	2	11,11,12	0.75	0	15,15,17	0.84	0

In the following table, the Chirals column lists the number of chiral outliers, the number of chiral centers analysed, the number of these observed in the model and the number defined in the Chemical Component Dictionary. Similar counts are reported in the Torsion and Rings columns. '-' means no outliers of that kind were identified.

Mol	Type	Chain	Res	Link	Chirals	Torsions	Rings
2	NAG	D	1	1,2	-	2/6/23/26	0/1/1/1
2	NAG	D	2	2	-	2/6/23/26	0/1/1/1
2	BMA	D	3	2	-	2/2/19/22	0/1/1/1
2	BMA	D	4	2	-	2/2/19/22	0/1/1/1
2	BMA	D	5	2	-	0/2/19/22	0/1/1/1
2	NAG	M	1	1,2	-	1/6/23/26	0/1/1/1
2	NAG	M	2	2	-	5/6/23/26	0/1/1/1
2	BMA	M	3	2	-	2/2/19/22	0/1/1/1
2	BMA	M	4	2	-	0/2/19/22	0/1/1/1
2	BMA	M	5	2	-	2/2/19/22	0/1/1/1

All (1) bond length outliers are listed below:

Mol	Chain	Res	Type	Atoms	Z	Observed(Å)	Ideal(Å)
2	M	3	BMA	O5-C1	-2.06	1.40	1.43

All (8) bond angle outliers are listed below:

Mol	Chain	Res	Type	Atoms	Z	Observed(°)	Ideal(°)
2	M	2	NAG	C2-N2-C7	4.33	129.07	122.90
2	M	4	BMA	C1-O5-C5	3.43	116.84	112.19
2	D	1	NAG	C1-O5-C5	2.77	115.94	112.19
2	M	2	NAG	C1-C2-N2	2.57	114.88	110.49
2	M	2	NAG	C1-O5-C5	2.48	115.55	112.19
2	M	4	BMA	O2-C2-C3	-2.39	105.34	110.14
2	D	3	BMA	C1-O5-C5	2.34	115.36	112.19
2	D	5	BMA	C1-O5-C5	2.24	115.23	112.19

There are no chirality outliers.

All (18) torsion outliers are listed below:

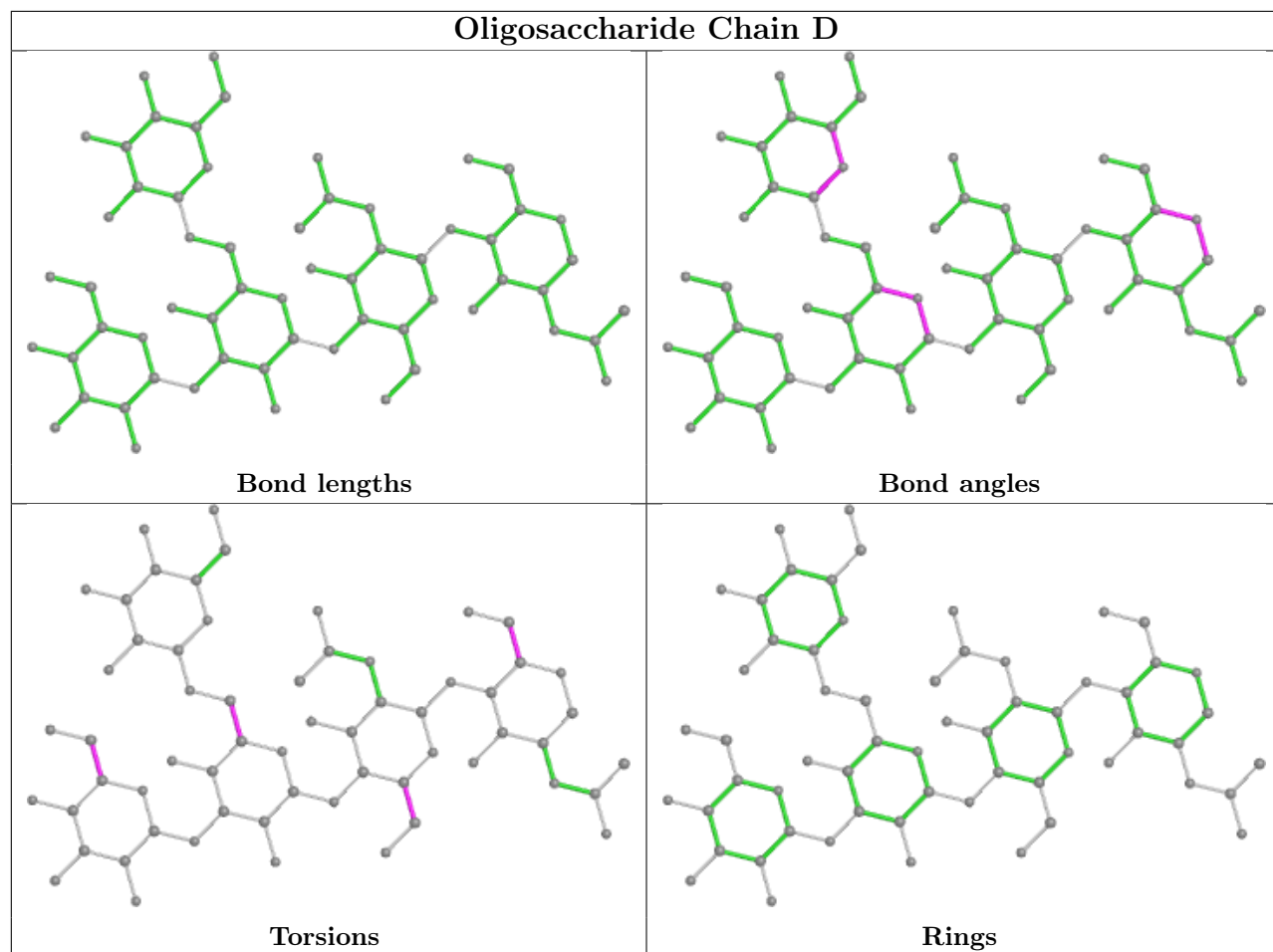
Mol	Chain	Res	Type	Atoms
2	M	3	BMA	C4-C5-C6-O6
2	M	2	NAG	O5-C5-C6-O6
2	M	2	NAG	C4-C5-C6-O6
2	M	3	BMA	O5-C5-C6-O6
2	D	2	NAG	C4-C5-C6-O6
2	D	3	BMA	O5-C5-C6-O6
2	D	4	BMA	C4-C5-C6-O6
2	D	4	BMA	O5-C5-C6-O6
2	D	1	NAG	C4-C5-C6-O6
2	M	2	NAG	C8-C7-N2-C2
2	M	2	NAG	O7-C7-N2-C2
2	D	2	NAG	O5-C5-C6-O6
2	D	1	NAG	O5-C5-C6-O6
2	D	3	BMA	C4-C5-C6-O6
2	M	5	BMA	C4-C5-C6-O6
2	M	5	BMA	O5-C5-C6-O6
2	M	2	NAG	C3-C2-N2-C7
2	M	1	NAG	C1-C2-N2-C7

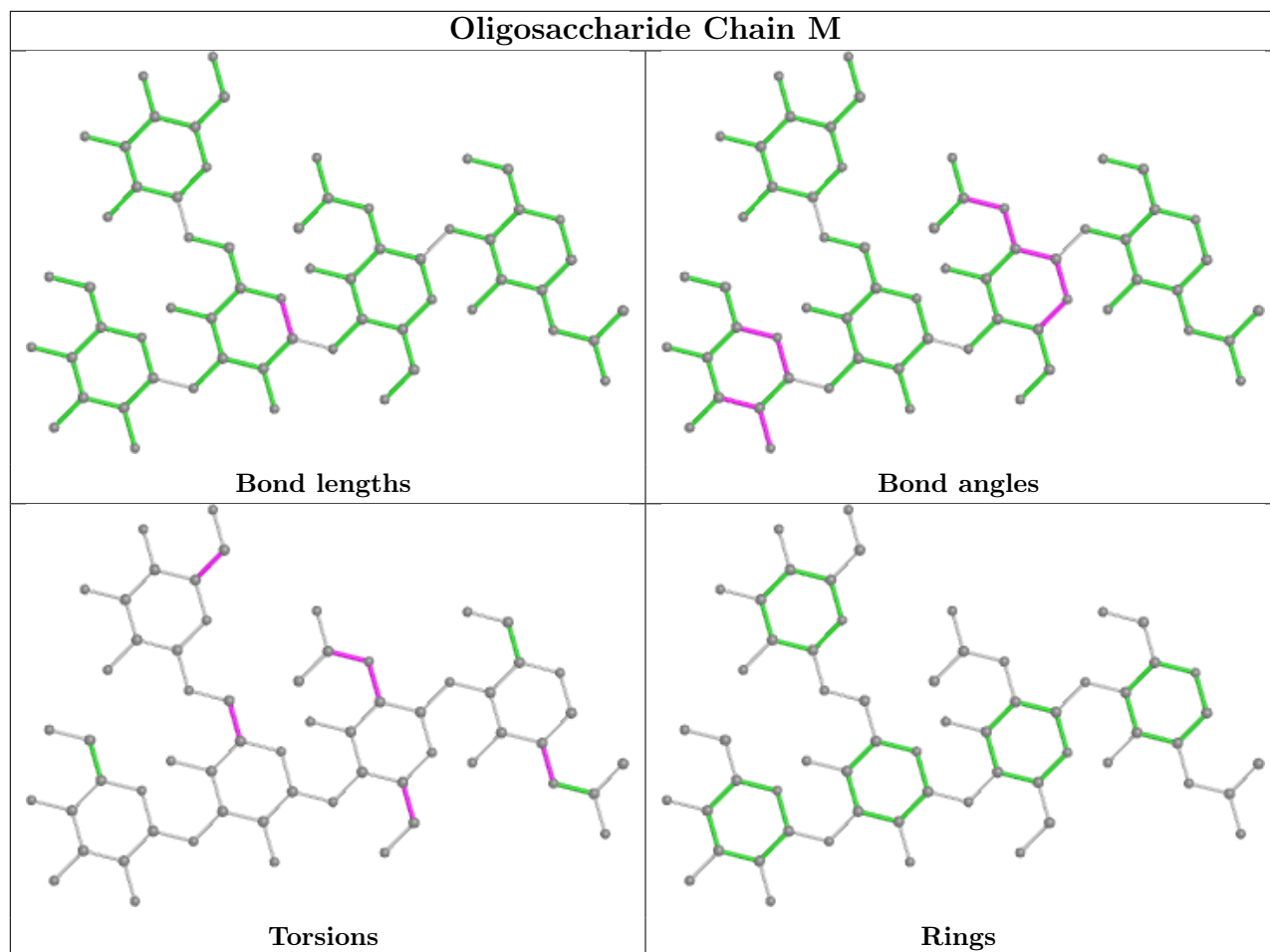
There are no ring outliers.

1 monomer is involved in 1 short contact:

Mol	Chain	Res	Type	Clashes	Symm-Clashes
2	M	2	NAG	1	0

The following is a two-dimensional graphical depiction of Mogul quality analysis of bond lengths, bond angles, torsion angles, and ring geometry for oligosaccharide.





5.6 Ligand geometry [i](#)

Of 11 ligands modelled in this entry, 2 are monoatomic - leaving 9 for Mogul analysis.

In the following table, the Counts columns list the number of bonds (or angles) for which Mogul statistics could be retrieved, the number of bonds (or angles) that are observed in the model and the number of bonds (or angles) that are defined in the Chemical Component Dictionary. The Link column lists molecule types, if any, to which the group is linked. The Z score for a bond length (or angle) is the number of standard deviations the observed value is removed from the expected value. A bond length (or angle) with $|Z| > 2$ is considered an outlier worth inspection. RMSZ is the root-mean-square of all Z scores of the bond lengths (or angles).

Mol	Type	Chain	Res	Link	Bond lengths			Bond angles		
					Counts	RMSZ	# $ Z > 2$	Counts	RMSZ	# $ Z > 2$
3	NAG	A	2307	1	14,14,15	0.38	0	17,19,21	0.47	0
4	ATP	A	2309	5	26,33,33	1.00	1 (3%)	31,52,52	1.68	6 (19%)
3	NAG	A	2302	1	14,14,15	0.28	0	17,19,21	0.60	0
4	ATP	A	2308	5	26,33,33	1.02	1 (3%)	31,52,52	1.52	4 (12%)
3	NAG	A	2303	1	14,14,15	0.36	0	17,19,21	0.39	0
3	NAG	A	2306	1	14,14,15	0.42	0	17,19,21	0.51	0

Mol	Type	Chain	Res	Link	Bond lengths			Bond angles		
					Counts	RMSZ	# Z > 2	Counts	RMSZ	# Z > 2
3	NAG	A	2305	1	14,14,15	0.56	0	17,19,21	1.21	1 (5%)
3	NAG	A	2304	1	14,14,15	0.47	0	17,19,21	0.43	0
3	NAG	A	2301	1	14,14,15	0.27	0	17,19,21	0.41	0

In the following table, the Chirals column lists the number of chiral outliers, the number of chiral centers analysed, the number of these observed in the model and the number defined in the Chemical Component Dictionary. Similar counts are reported in the Torsion and Rings columns. '-' means no outliers of that kind were identified.

Mol	Type	Chain	Res	Link	Chirals	Torsions	Rings
3	NAG	A	2307	1	-	2/6/23/26	0/1/1/1
4	ATP	A	2309	5	-	5/18/38/38	0/3/3/3
3	NAG	A	2302	1	-	4/6/23/26	0/1/1/1
4	ATP	A	2308	5	-	7/18/38/38	0/3/3/3
3	NAG	A	2303	1	-	4/6/23/26	0/1/1/1
3	NAG	A	2306	1	-	4/6/23/26	0/1/1/1
3	NAG	A	2305	1	-	4/6/23/26	0/1/1/1
3	NAG	A	2304	1	-	2/6/23/26	0/1/1/1
3	NAG	A	2301	1	-	4/6/23/26	0/1/1/1

All (2) bond length outliers are listed below:

Mol	Chain	Res	Type	Atoms	Z	Observed(Å)	Ideal(Å)
4	A	2308	ATP	C2'-C1'	-2.21	1.50	1.53
4	A	2309	ATP	C5-C4	2.01	1.46	1.40

All (11) bond angle outliers are listed below:

Mol	Chain	Res	Type	Atoms	Z	Observed(°)	Ideal(°)
4	A	2309	ATP	PB-O3B-PG	-4.78	116.43	132.83
3	A	2305	NAG	C2-N2-C7	4.23	128.93	122.90
4	A	2308	ATP	PB-O3B-PG	-3.87	119.55	132.83
4	A	2309	ATP	N3-C2-N1	-3.51	123.19	128.68
4	A	2309	ATP	PA-O3A-PB	-3.33	121.41	132.83
4	A	2308	ATP	PA-O3A-PB	-3.12	122.11	132.83
4	A	2308	ATP	N3-C2-N1	-2.86	124.21	128.68
4	A	2309	ATP	C4-C5-N7	-2.48	106.81	109.40
4	A	2308	ATP	C4-C5-N7	-2.26	107.04	109.40
4	A	2309	ATP	C2'-C3'-C4'	2.03	106.59	102.64
4	A	2309	ATP	O3G-PG-O2G	2.01	115.32	107.64

There are no chirality outliers.

All (36) torsion outliers are listed below:

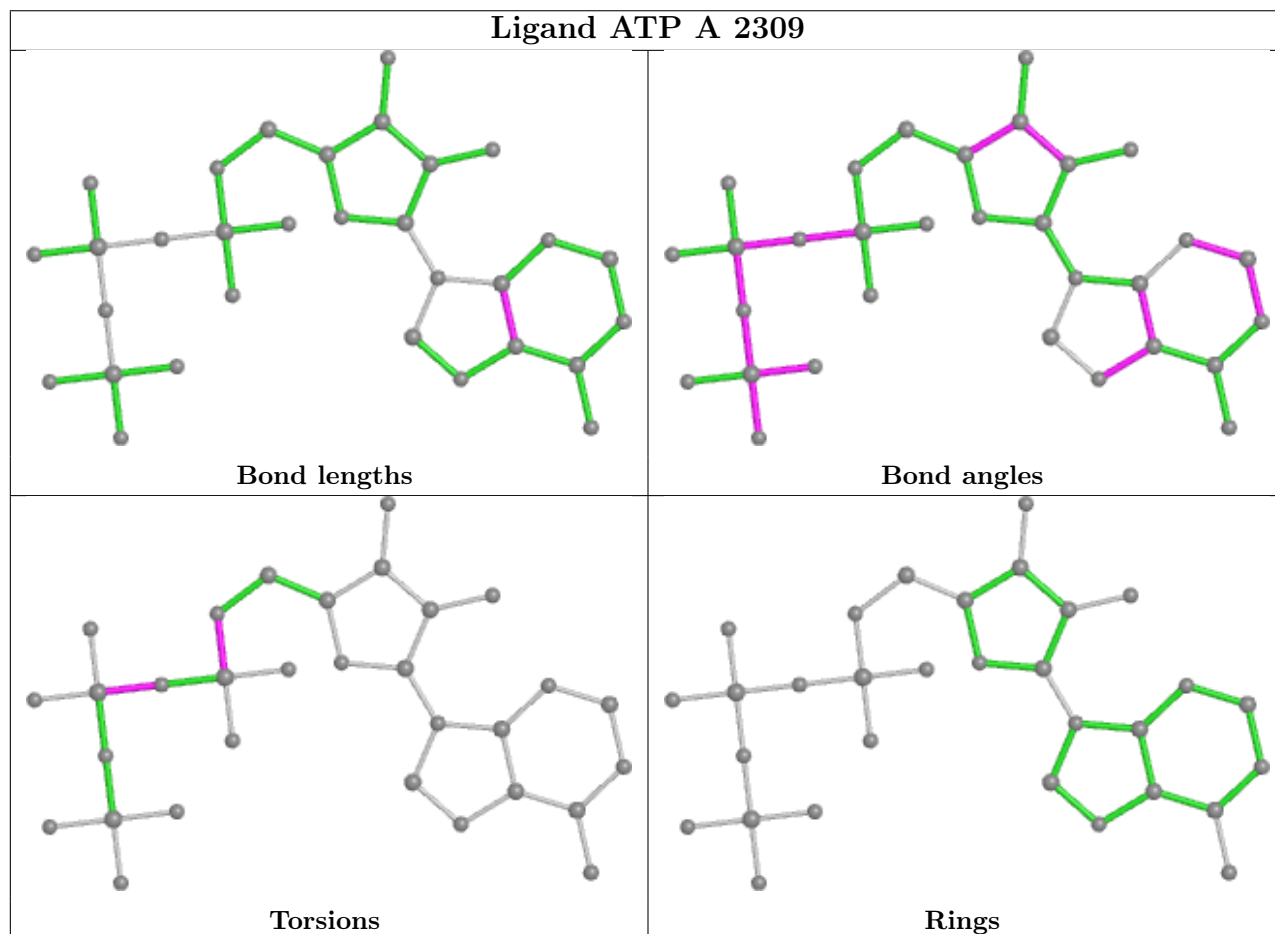
Mol	Chain	Res	Type	Atoms
4	A	2308	ATP	C5'-O5'-PA-O2A
4	A	2309	ATP	C5'-O5'-PA-O2A
3	A	2301	NAG	C4-C5-C6-O6
3	A	2302	NAG	O5-C5-C6-O6
3	A	2304	NAG	O5-C5-C6-O6
3	A	2306	NAG	O5-C5-C6-O6
3	A	2307	NAG	O5-C5-C6-O6
3	A	2301	NAG	O5-C5-C6-O6
3	A	2306	NAG	C1-C2-N2-C7
3	A	2304	NAG	C4-C5-C6-O6
3	A	2306	NAG	C4-C5-C6-O6
3	A	2302	NAG	C4-C5-C6-O6
3	A	2301	NAG	C8-C7-N2-C2
3	A	2301	NAG	O7-C7-N2-C2
3	A	2305	NAG	C8-C7-N2-C2
3	A	2305	NAG	O7-C7-N2-C2
4	A	2308	ATP	C3'-C4'-C5'-O5'
3	A	2303	NAG	C1-C2-N2-C7
3	A	2303	NAG	C4-C5-C6-O6
4	A	2308	ATP	O4'-C4'-C5'-O5'
3	A	2303	NAG	O5-C5-C6-O6
3	A	2307	NAG	C4-C5-C6-O6
4	A	2308	ATP	C5'-O5'-PA-O3A
4	A	2309	ATP	C5'-O5'-PA-O3A
4	A	2308	ATP	PA-O3A-PB-O2B
4	A	2308	ATP	C5'-O5'-PA-O1A
3	A	2306	NAG	C3-C2-N2-C7
3	A	2305	NAG	C4-C5-C6-O6
4	A	2308	ATP	PA-O3A-PB-O1B
4	A	2309	ATP	PA-O3A-PB-O1B
4	A	2309	ATP	PA-O3A-PB-O2B
3	A	2302	NAG	C3-C2-N2-C7
3	A	2303	NAG	C3-C2-N2-C7
3	A	2305	NAG	C3-C2-N2-C7
4	A	2309	ATP	C5'-O5'-PA-O1A
3	A	2302	NAG	C1-C2-N2-C7

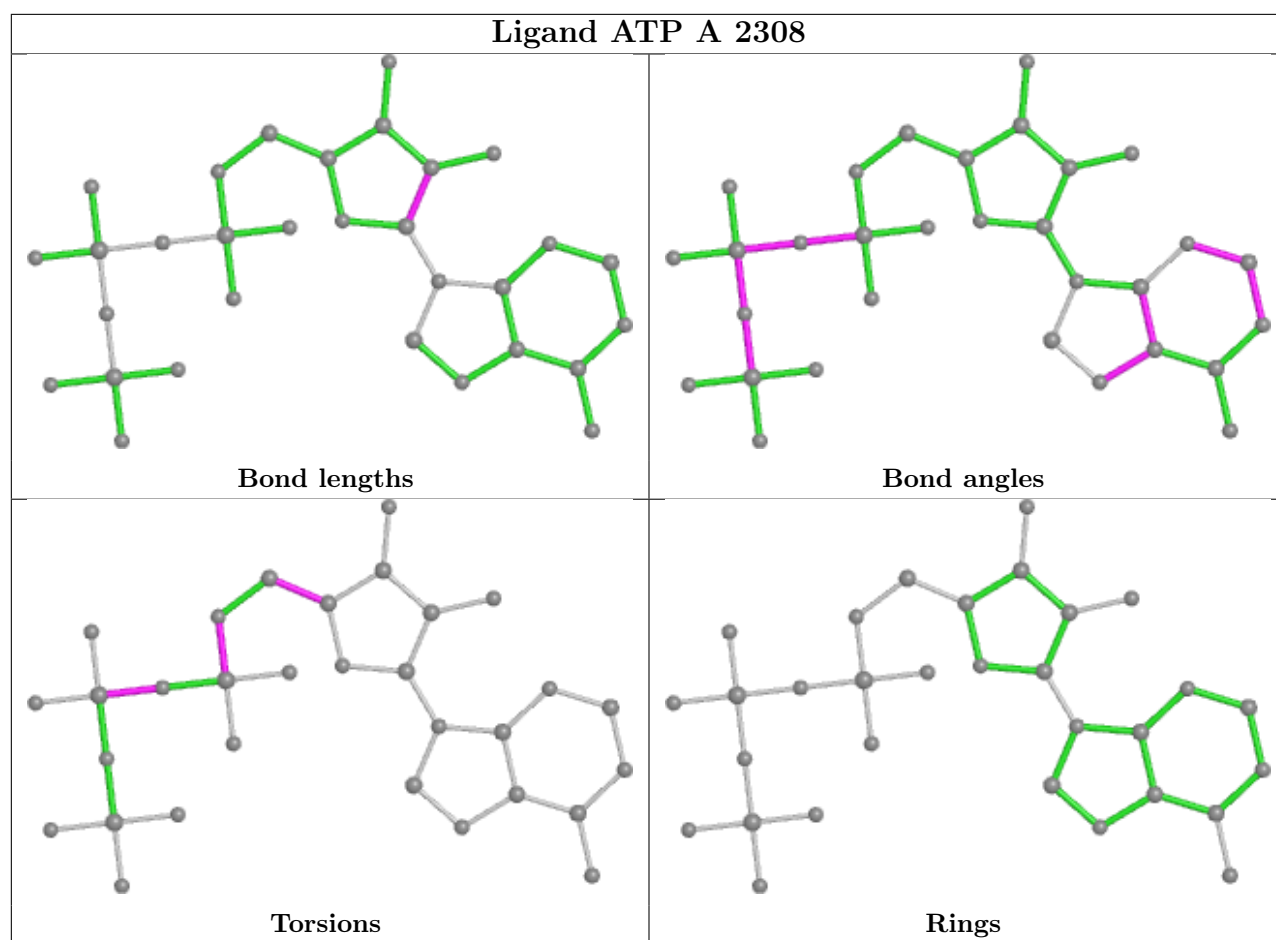
There are no ring outliers.

2 monomers are involved in 3 short contacts:

Mol	Chain	Res	Type	Clashes	Symm-Clashes
3	A	2306	NAG	1	0
3	A	2305	NAG	2	0

The following is a two-dimensional graphical depiction of Mogul quality analysis of bond lengths, bond angles, torsion angles, and ring geometry for all instances of the Ligand of Interest. In addition, ligands with molecular weight > 250 and outliers as shown on the validation Tables will also be included. For torsion angles, if less than 5% of the Mogul distribution of torsion angles is within 10 degrees of the torsion angle in question, then that torsion angle is considered an outlier. Any bond that is central to one or more torsion angles identified as an outlier by Mogul will be highlighted in the graph. For rings, the root-mean-square deviation (RMSD) between the ring in question and similar rings identified by Mogul is calculated over all ring torsion angles. If the average RMSD is greater than 60 degrees and the minimal RMSD between the ring in question and any Mogul-identified rings is also greater than 60 degrees, then that ring is considered an outlier. The outliers are highlighted in purple. The color gray indicates Mogul did not find sufficient equivalents in the CSD to analyse the geometry.





5.7 Other polymers [i](#)

There are no such residues in this entry.

5.8 Polymer linkage issues [i](#)

There are no chain breaks in this entry.

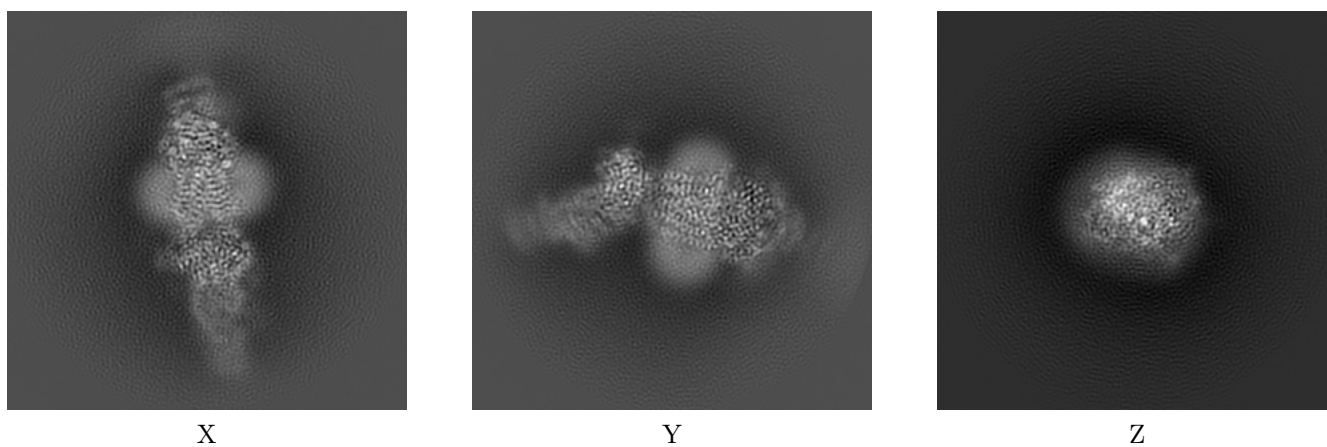
6 Map visualisation [i](#)

This section contains visualisations of the EMDB entry EMD-31002. These allow visual inspection of the internal detail of the map and identification of artifacts.

No raw map or half-maps were deposited for this entry and therefore no images, graphs, etc. pertaining to the raw map can be shown.

6.1 Orthogonal projections [i](#)

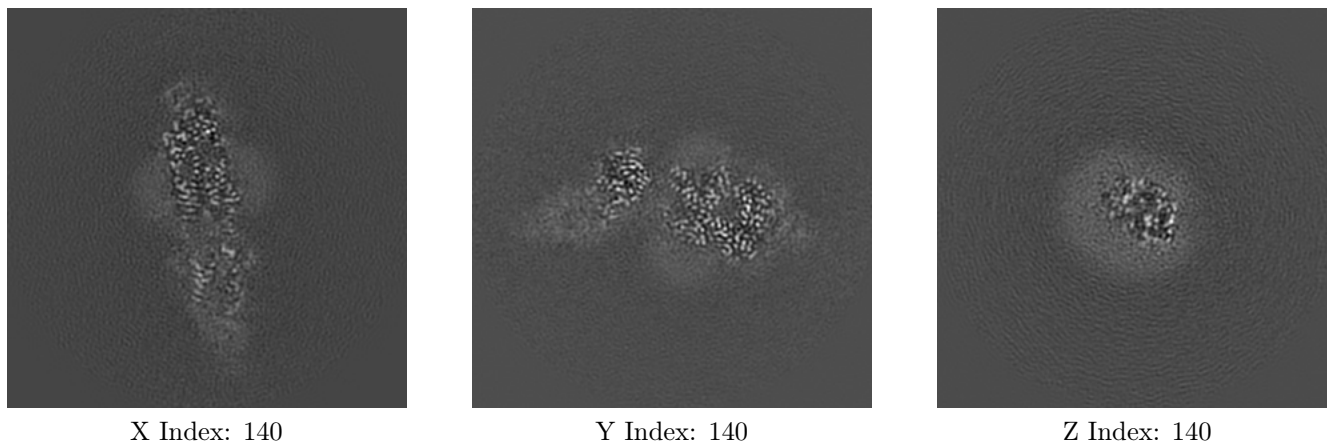
6.1.1 Primary map



The images above show the map projected in three orthogonal directions.

6.2 Central slices [i](#)

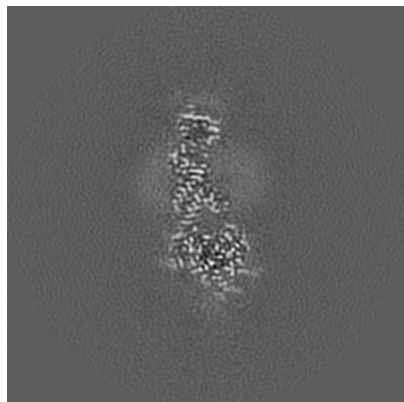
6.2.1 Primary map



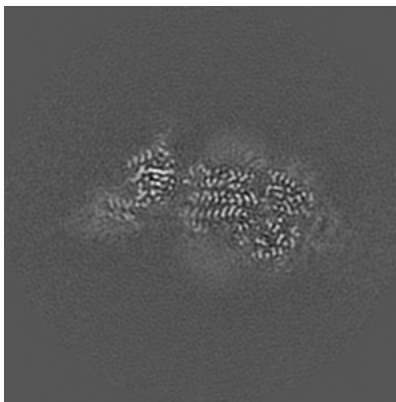
The images above show central slices of the map in three orthogonal directions.

6.3 Largest variance slices [i](#)

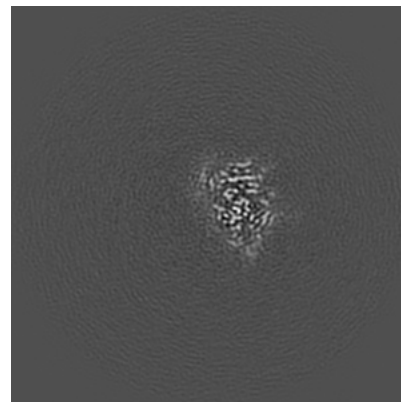
6.3.1 Primary map



X Index: 154



Y Index: 134



Z Index: 109

The images above show the largest variance slices of the map in three orthogonal directions.

6.4 Orthogonal surface views [i](#)

6.4.1 Primary map



X



Y



Z

The images above show the 3D surface view of the map at the recommended contour level 0.026. These images, in conjunction with the slice images, may facilitate assessment of whether an appropriate contour level has been provided.

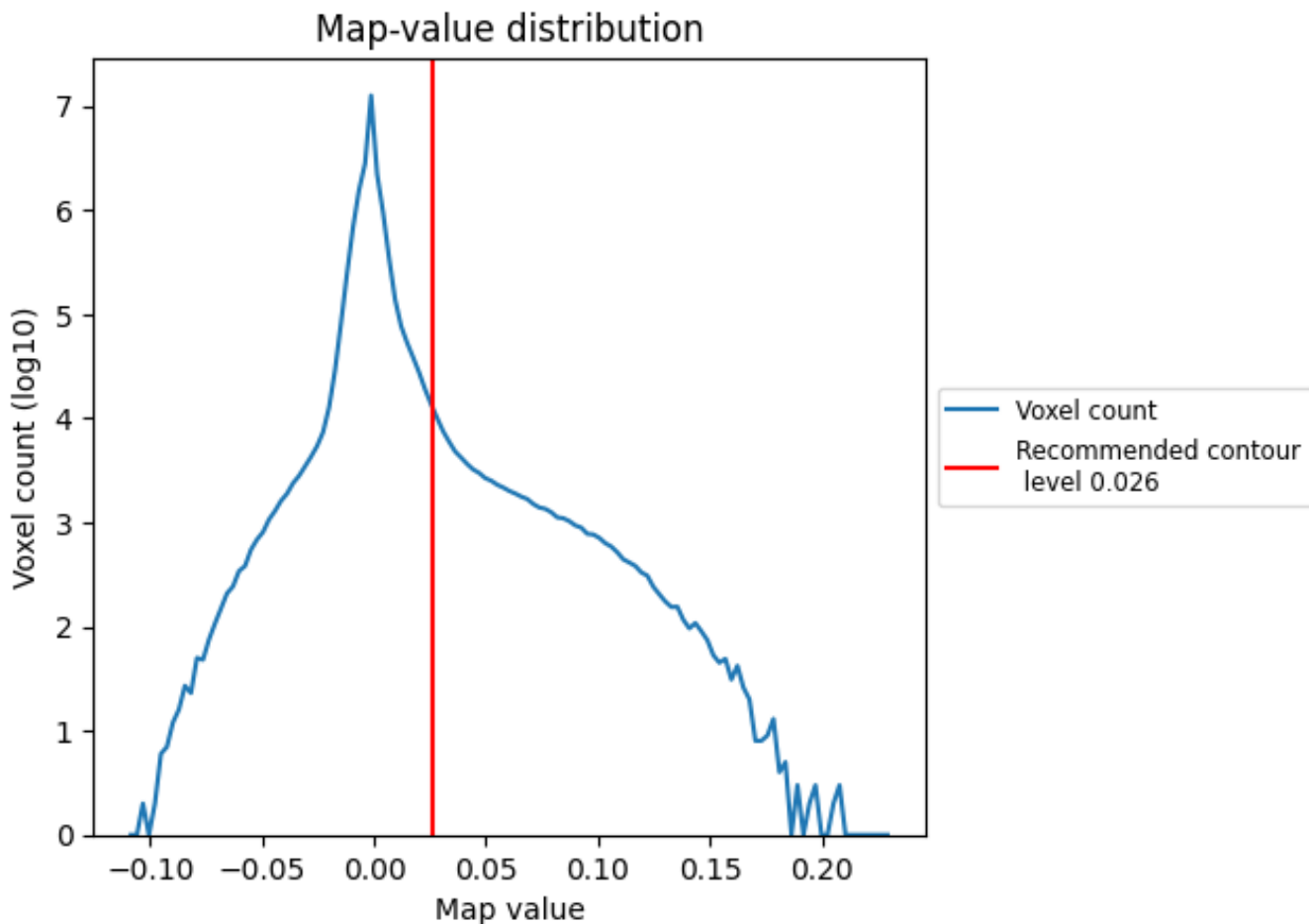
6.5 Mask visualisation

This section was not generated. No masks/segmentation were deposited.

7 Map analysis [i](#)

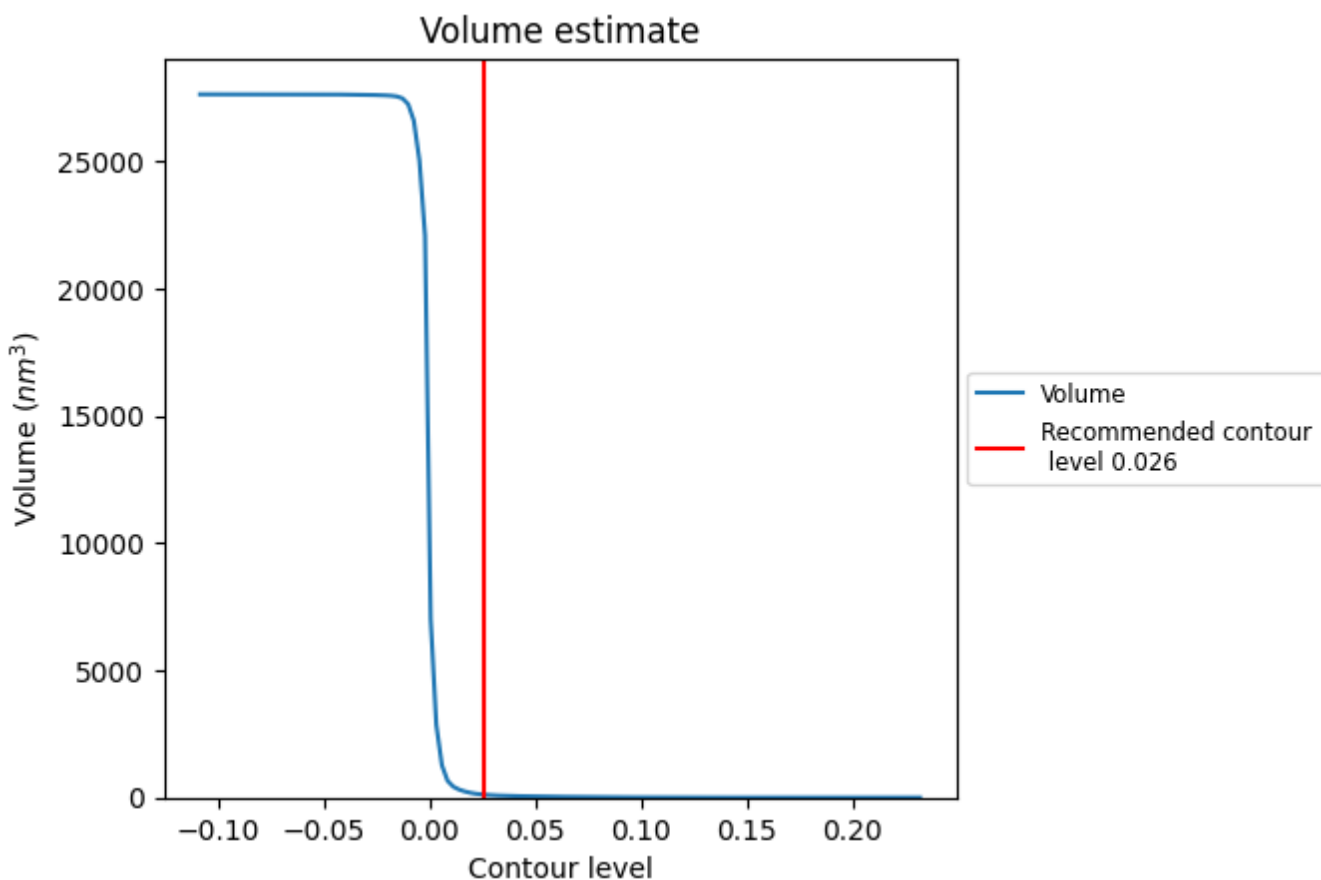
This section contains the results of statistical analysis of the map.

7.1 Map-value distribution [i](#)



The map-value distribution is plotted in 128 intervals along the x-axis. The y-axis is logarithmic. A spike in this graph at zero usually indicates that the volume has been masked.

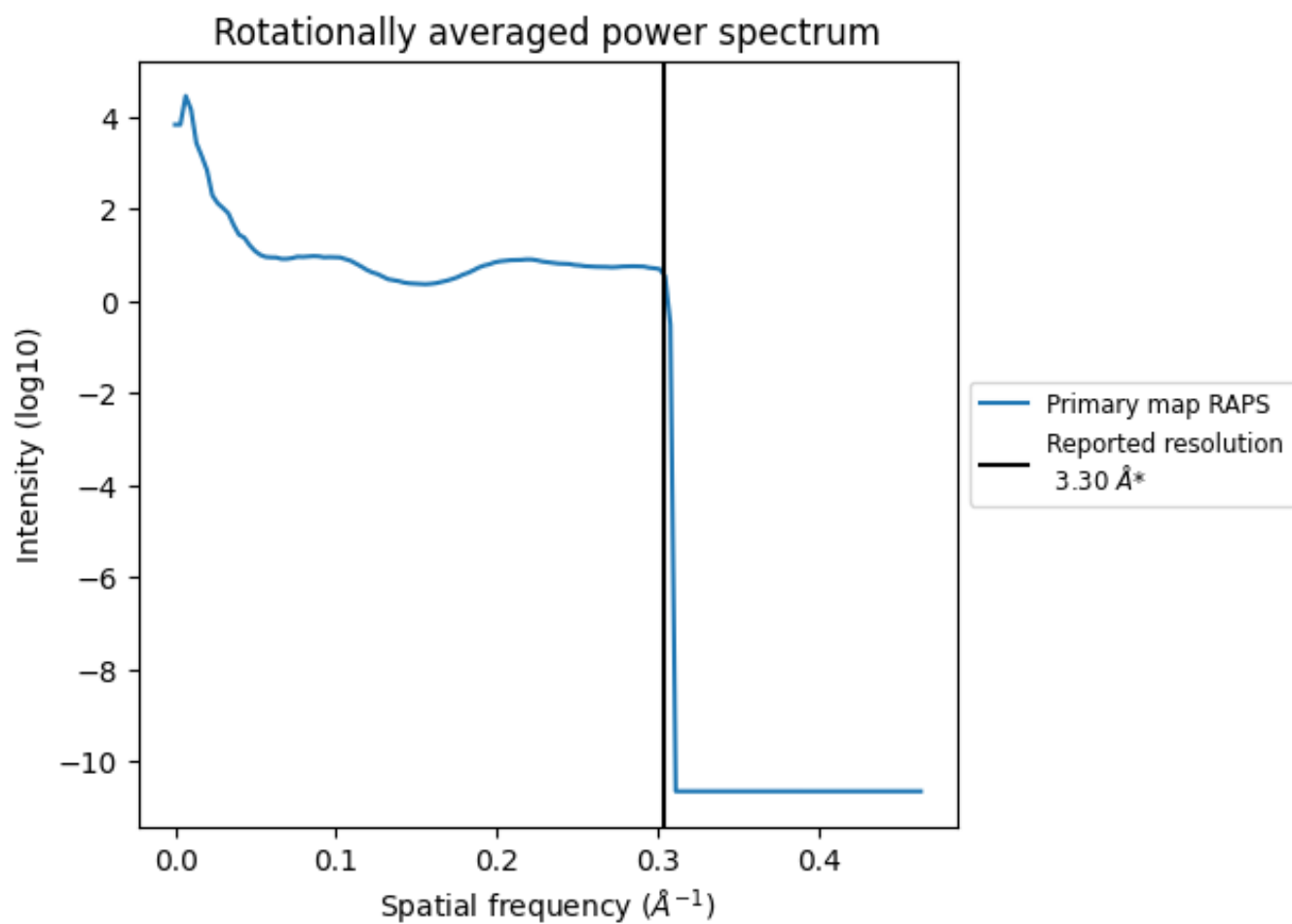
7.2 Volume estimate [\(i\)](#)



The volume at the recommended contour level is 112 nm^3 ; this corresponds to an approximate mass of 101 kDa.

The volume estimate graph shows how the enclosed volume varies with the contour level. The recommended contour level is shown as a vertical line and the intersection between the line and the curve gives the volume of the enclosed surface at the given level.

7.3 Rotationally averaged power spectrum [\(i\)](#)



*Reported resolution corresponds to spatial frequency of 0.303 Å⁻¹

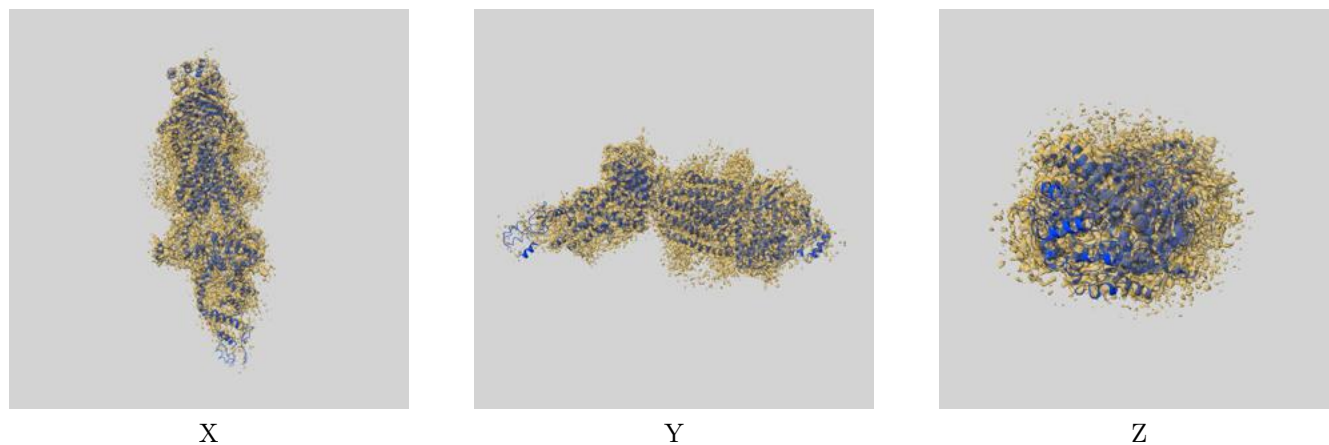
8 Fourier-Shell correlation

This section was not generated. No FSC curve or half-maps provided.

9 Map-model fit [i](#)

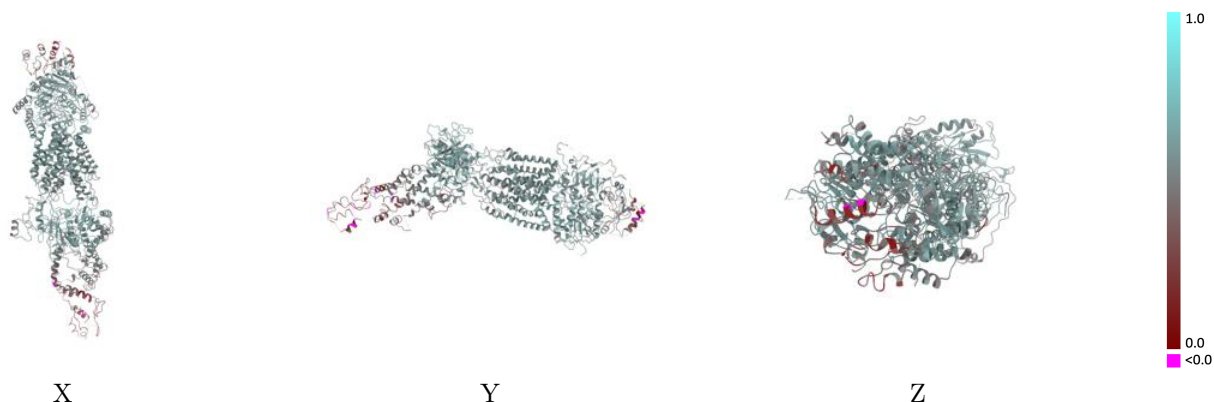
This section contains information regarding the fit between EMDB map EMD-31002 and PDB model 7E7Q. Per-residue inclusion information can be found in section 3 on page 7.

9.1 Map-model overlay [i](#)



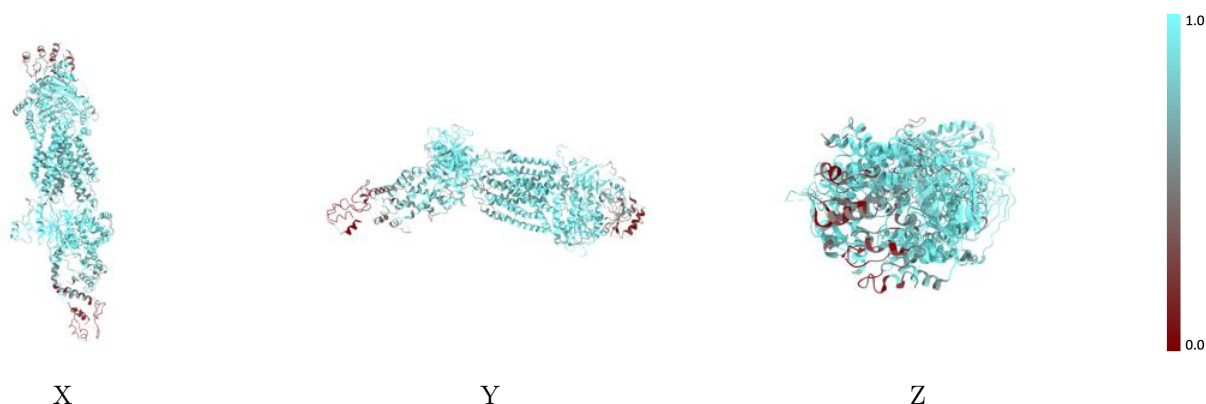
The images above show the 3D surface view of the map at the recommended contour level 0.026 at 50% transparency in yellow overlaid with a ribbon representation of the model coloured in blue. These images allow for the visual assessment of the quality of fit between the atomic model and the map.

9.2 Q-score mapped to coordinate model [i](#)



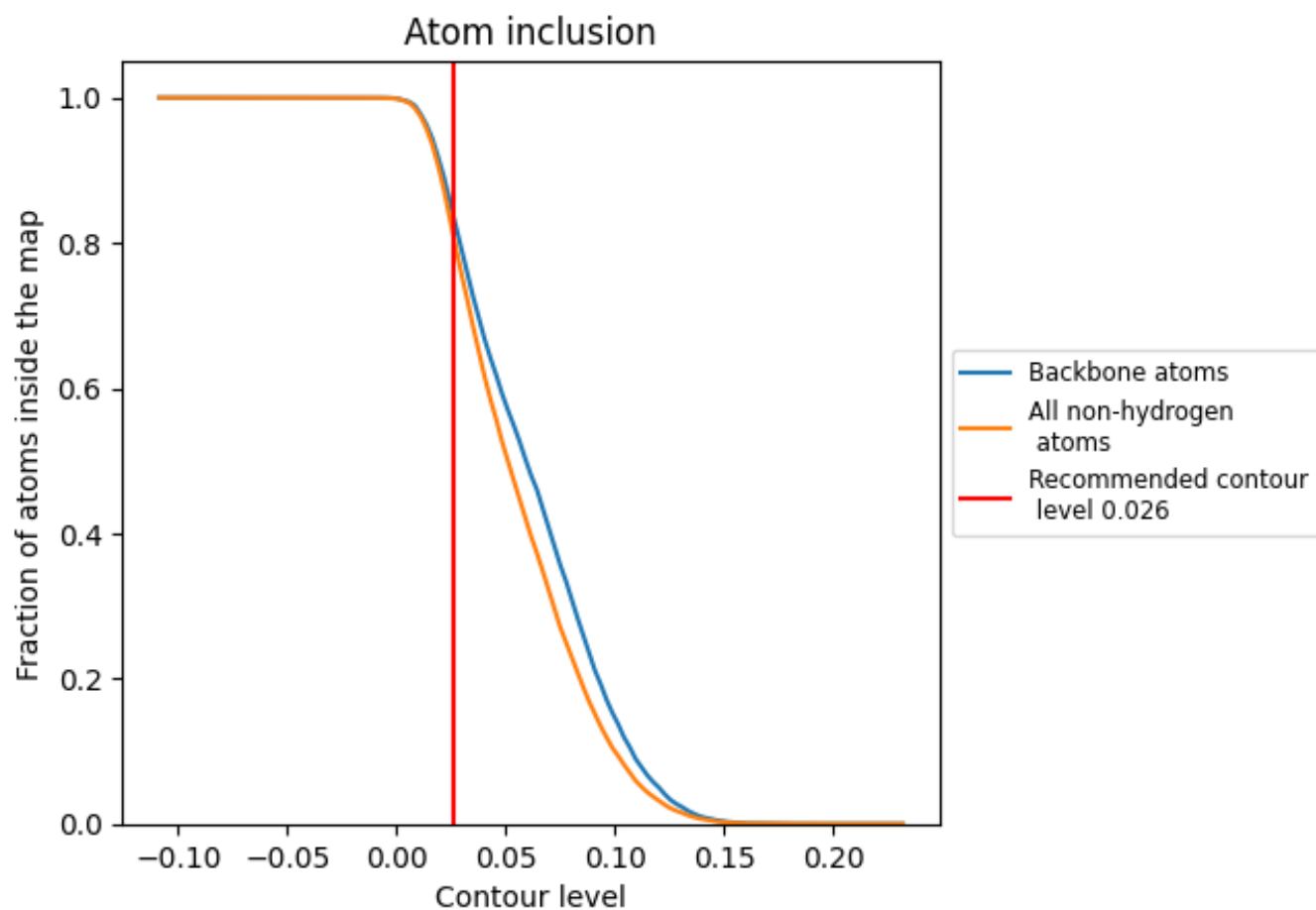
The images above show the model with each residue coloured according to its Q-score. This shows their resolvability in the map with higher Q-score values reflecting better resolvability. Please note: Q-score is calculating the resolvability of atoms, and thus high values are only expected at resolutions at which atoms can be resolved. Low Q-score values may therefore be expected for many entries.

9.3 Atom inclusion mapped to coordinate model [i](#)



The images above show the model with each residue coloured according to its atom inclusion. This shows to what extent they are inside the map at the recommended contour level (0.026).








9.4 Atom inclusion [i](#)



At the recommended contour level, 84% of all backbone atoms, 81% of all non-hydrogen atoms, are inside the map.

9.5 Map-model fit summary [i](#)

The table lists the average atom inclusion at the recommended contour level (0.026) and Q-score for the entire model and for each chain.

Chain	Atom inclusion	Q-score
All	 0.8111	 0.5320
A	 0.8119	 0.5320
D	 0.6885	 0.4750
M	 0.7541	 0.4870

