



# Full wwPDB X-ray Structure Validation Report ⓘ

Mar 10, 2018 – 01:38 am GMT

PDB ID : 3EAH  
Title : Structure of inhibited human eNOS oxygenase domain  
Authors : Garcin, E.D.; Arvai, A.S.; Rosenfeld, R.J.; Kroeger, M.D.; Crane, B.R.; Andersson, G.; Andrews, G.; Hamley, P.J.; Mallinder, P.R.; Nicholls, D.J.; St-Gallay, S.A.; Tinker, A.C.; Gensmantel, N.P.; Mete, A.; Cheshire, D.R.; Connolly, S.; Stuehr, D.J.; Aberg, A.; Wallace, A.V.; Tainer, J.A.; Getzoff, E.D.  
Deposited on : 2008-08-25  
Resolution : 2.44 Å(reported)

This is a Full wwPDB X-ray Structure Validation Report for a publicly released PDB entry.

We welcome your comments at [validation@mail.wwpdb.org](mailto:validation@mail.wwpdb.org)

A user guide is available at

<https://www.wwpdb.org/validation/2017/XrayValidationReportHelp>

with specific help available everywhere you see the ⓘ symbol.

---

The following versions of software and data (see [references ⓘ](#)) were used in the production of this report:

MolProbity : 4.02b-467  
Mogul : 1.7.3 (157068), CSD as539be (2018)  
Xtriage (Phenix) : 1.13  
EDS : trunk30967  
Percentile statistics : 20171227.v01 (using entries in the PDB archive December 27th 2017)  
Refmac : 5.8.0158  
CCP4 : 7.0 (Gargrove)  
Ideal geometry (proteins) : Engh & Huber (2001)  
Ideal geometry (DNA, RNA) : Parkinson et al. (1996)  
Validation Pipeline (wwPDB-VP) : trunk30967

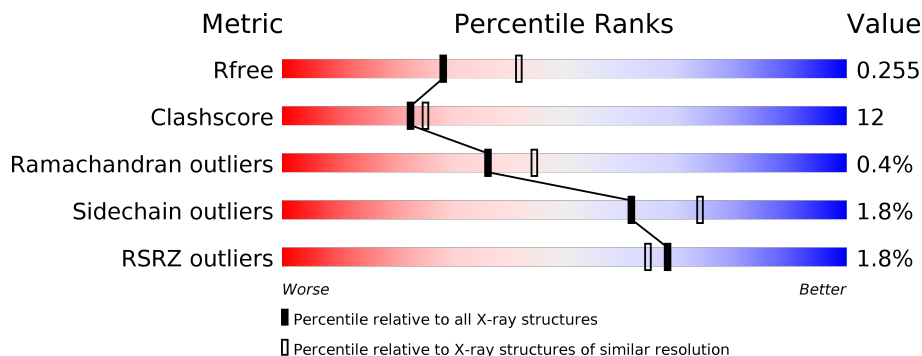
# 1 Overall quality at a glance

The following experimental techniques were used to determine the structure:

*X-RAY DIFFRACTION*

The reported resolution of this entry is 2.44 Å.

Percentile scores (ranging between 0-100) for global validation metrics of the entry are shown in the following graphic. The table shows the number of entries on which the scores are based.



Metric	Whole archive (#Entries)	Similar resolution (#Entries, resolution range(Å))
$R_{free}$	111664	1296 (2.46-2.42)
Clashscore	122126	1359 (2.46-2.42)
Ramachandran outliers	120053	1350 (2.46-2.42)
Sidechain outliers	120020	1350 (2.46-2.42)
RSRZ outliers	108989	1278 (2.46-2.42)

The table below summarises the geometric issues observed across the polymeric chains and their fit to the electron density. The red, orange, yellow and green segments on the lower bar indicate the fraction of residues that contain outliers for  $\geq 3$ , 2, 1 and 0 types of geometric quality criteria. A grey segment represents the fraction of residues that are not modelled. The numeric value for each fraction is indicated below the corresponding segment, with a dot representing fractions  $\leq 5\%$ . The upper red bar (where present) indicates the fraction of residues that have poor fit to the electron density. The numeric value is given above the bar.

Mol	Chain	Length	Quality of chain
1	A	427	<p>75% 17% • 7%</p>
1	B	427	<p>70% 22% • 6%</p>

The following table lists non-polymeric compounds, carbohydrate monomers and non-standard residues in protein, DNA, RNA chains that are outliers for geometric or electron-density-fit criteria:

Mol	Type	Chain	Res	Chirality	Geometry	Clashes	Electron density
4	327	A	864	-	-	X	-
5	MPD	A	866	-	-	-	X
6	CL	A	1865	-	-	X	-
6	CL	B	865	-	-	X	-

## 2 Entry composition [i](#)

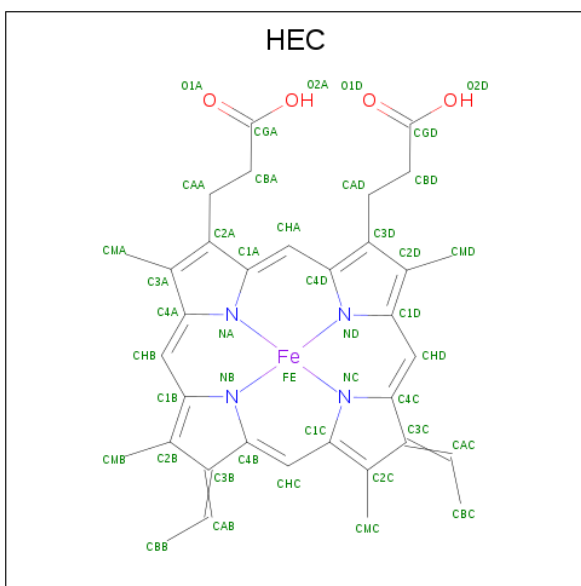
There are 7 unique types of molecules in this entry. The entry contains 6620 atoms, of which 0 are hydrogens and 0 are deuteriums.

In the tables below, the ZeroOcc column contains the number of atoms modelled with zero occupancy, the AltConf column contains the number of residues with at least one atom in alternate conformation and the Trace column contains the number of residues modelled with at most 2 atoms.

- Molecule 1 is a protein called Nitric oxide synthase, endothelial.

Mol	Chain	Residues	Atoms					ZeroOcc	AltConf	Trace
			Total	C	N	O	S			
1	A	399	Total 3157	C 2015	N 553	O 573	S 16	0	0	0
1	B	401	Total 3171	C 2025	N 554	O 576	S 16	0	0	0

- Molecule 2 is HEME C (three-letter code: HEC) (formula:  $C_{34}H_{34}FeN_4O_4$ ).

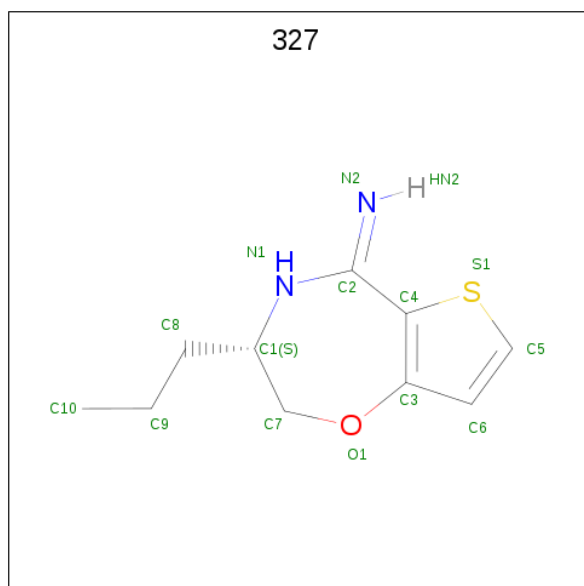


Mol	Chain	Residues	Atoms					ZeroOcc	AltConf
			Total	C	Fe	N	O		
2	A	1	Total 43	C 34	Fe 1	N 4	O 4	0	0
2	B	1	Total 43	C 34	Fe 1	N 4	O 4	0	0

- Molecule 3 is ZINC ION (three-letter code: ZN) (formula: Zn).

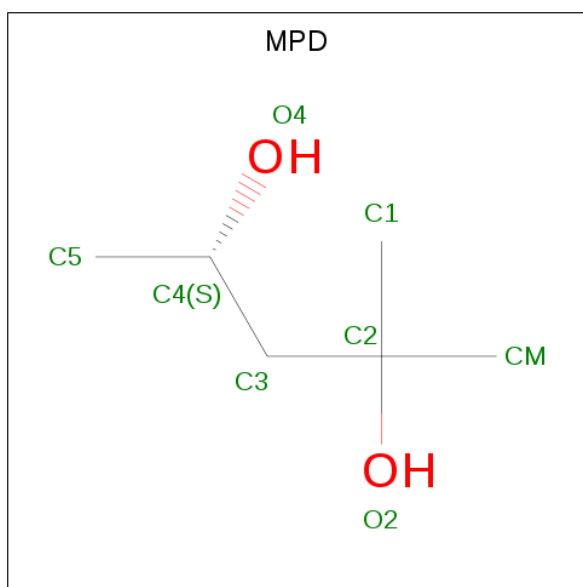
Mol	Chain	Residues	Atoms		ZeroOcc	AltConf
3	A	1	Total	Zn	0	0
			1	1		

- Molecule 4 is (3S,5E)-3-propyl-3,4-dihydrothieno[2,3-f][1,4]oxazepin-5(2H)-imine (three-letter code: 327) (formula: C<sub>10</sub>H<sub>14</sub>N<sub>2</sub>OS).



Mol	Chain	Residues	Atoms					ZeroOcc	AltConf
			Total	C	N	O	S		
4	A	1	Total	C	N	O	S	0	0
			14	10	2	1	1		
4	B	1	Total	C	N	O	S	0	0
			14	10	2	1	1		

- Molecule 5 is (4S)-2-METHYL-2,4-PENTANEDIOL (three-letter code: MPD) (formula: C<sub>6</sub>H<sub>14</sub>O<sub>2</sub>).



Mol	Chain	Residues	Atoms	ZeroOcc	AltConf
5	A	1	Total C O 8 6 2	0	0
5	A	1	Total C O 8 6 2	0	0
5	A	1	Total C O 8 6 2	0	0
5	B	1	Total C O 8 6 2	0	0

- Molecule 6 is CHLORIDE ION (three-letter code: CL) (formula: Cl).

Mol	Chain	Residues	Atoms	ZeroOcc	AltConf
6	B	1	Total Cl 1 1	0	0
6	A	1	Total Cl 1 1	0	0

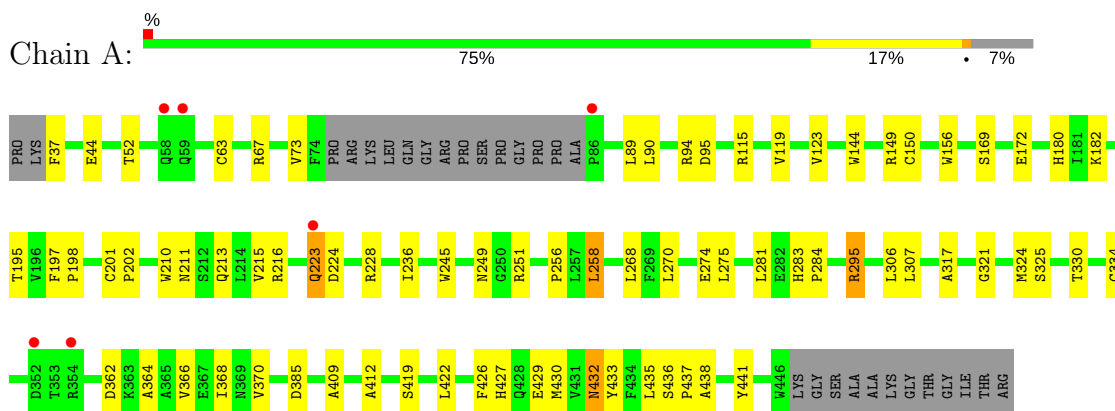
- Molecule 7 is water.

Mol	Chain	Residues	Atoms	ZeroOcc	AltConf
7	A	78	Total O 78 78	0	0
7	B	65	Total O 65 65	0	0

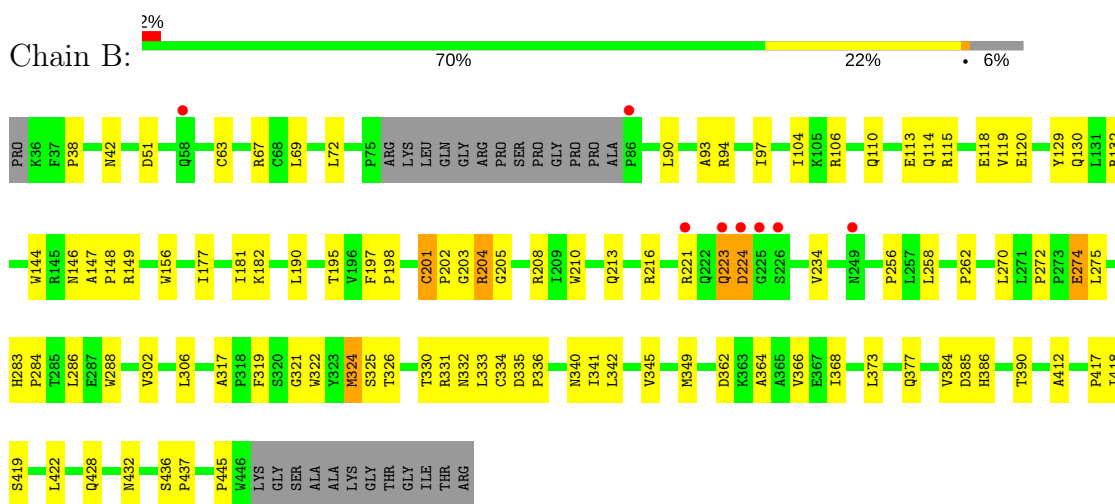
### 3 Residue-property plots

These plots are drawn for all protein, RNA and DNA chains in the entry. The first graphic for a chain summarises the proportions of the various outlier classes displayed in the second graphic. The second graphic shows the sequence view annotated by issues in geometry and electron density. Residues are color-coded according to the number of geometric quality criteria for which they contain at least one outlier: green = 0, yellow = 1, orange = 2 and red = 3 or more. A red dot above a residue indicates a poor fit to the electron density ( $RSRZ > 2$ ). Stretches of 2 or more consecutive residues without any outlier are shown as a green connector. Residues present in the sample, but not in the model, are shown in grey.

- Molecule 1: Nitric oxide synthase, endothelial



- Molecule 1: Nitric oxide synthase, endothelial



## 4 Data and refinement statistics

Property	Value	Source
Space group	P 21 21 21	Depositor
Cell constants a, b, c, $\alpha$ , $\beta$ , $\gamma$	71.09Å 90.15Å 156.10Å 90.00° 90.00° 90.00°	Depositor
Resolution (Å)	25.00 – 2.44 25.00 – 2.44	Depositor EDS
% Data completeness (in resolution range)	95.3 (25.00-2.44) 95.4 (25.00-2.44)	Depositor EDS
$R_{merge}$	(Not available)	Depositor
$R_{sym}$	(Not available)	Depositor
$\langle I/\sigma(I) \rangle$ <sup>1</sup>	1.72 (at 2.44Å)	Xtrriage
Refinement program	CNS 1.1	Depositor
R, $R_{free}$	0.213 , 0.258 0.207 , 0.255	Depositor DCC
$R_{free}$ test set	1803 reflections (4.97%)	wwPDB-VP
Wilson B-factor (Å <sup>2</sup> )	39.9	Xtrriage
Anisotropy	0.517	Xtrriage
Bulk solvent $k_{sol}$ (e/Å <sup>3</sup> ), $B_{sol}$ (Å <sup>2</sup> )	0.32 , 33.6	EDS
L-test for twinning <sup>2</sup>	$\langle  L  \rangle = 0.49$ , $\langle L^2 \rangle = 0.32$	Xtrriage
Estimated twinning fraction	No twinning to report.	Xtrriage
$F_o, F_c$ correlation	0.94	EDS
Total number of atoms	6620	wwPDB-VP
Average B, all atoms (Å <sup>2</sup> )	39.0	wwPDB-VP

Xtrriage's analysis on translational NCS is as follows: *The largest off-origin peak in the Patterson function is 3.88% of the height of the origin peak. No significant pseudotranslation is detected.*

<sup>1</sup>Intensities estimated from amplitudes.

<sup>2</sup>Theoretical values of  $\langle |L| \rangle$ ,  $\langle L^2 \rangle$  for acentric reflections are 0.5, 0.333 respectively for untwinned datasets, and 0.375, 0.2 for perfectly twinned datasets.



## 5 Model quality i

### 5.1 Standard geometry i

Bond lengths and bond angles in the following residue types are not validated in this section: 327, ZN, HEC, MPD, CL

The Z score for a bond length (or angle) is the number of standard deviations the observed value is removed from the expected value. A bond length (or angle) with  $|Z| > 5$  is considered an outlier worth inspection. RMSZ is the root-mean-square of all Z scores of the bond lengths (or angles).

Mol	Chain	Bond lengths		Bond angles	
		RMSZ	# Z  >5	RMSZ	# Z  >5
1	A	0.37	0/3248	0.64	1/4430 (0.0%)
1	B	0.37	0/3263	0.63	1/4451 (0.0%)
All	All	0.37	0/6511	0.63	2/8881 (0.0%)

There are no bond length outliers.

All (2) bond angle outliers are listed below:

Mol	Chain	Res	Type	Atoms	Z	Observed(°)	Ideal(°)
1	A	324	MET	N-CA-C	-5.53	96.07	111.00
1	B	324	MET	N-CA-C	-5.26	96.80	111.00

There are no chirality outliers.

There are no planarity outliers.

### 5.2 Too-close contacts i

In the following table, the Non-H and H(model) columns list the number of non-hydrogen atoms and hydrogen atoms in the chain respectively. The H(added) column lists the number of hydrogen atoms added and optimized by MolProbity. The Clashes column lists the number of clashes within the asymmetric unit, whereas Symm-Clashes lists symmetry related clashes.

Mol	Chain	Non-H	H(model)	H(added)	Clashes	Symm-Clashes
1	A	3157	0	3042	73	0
1	B	3171	0	3057	88	1
2	A	43	0	32	7	0
2	B	43	0	32	4	0
3	A	1	0	0	0	0
4	A	14	0	13	6	0
4	B	14	0	13	5	0

*Continued on next page...*

Continued from previous page...

Mol	Chain	Non-H	H(model)	H(added)	Clashes	Symm-Clashes
5	A	24	0	42	5	0
5	B	8	0	14	0	0
6	A	1	0	0	2	0
6	B	1	0	0	3	0
7	A	78	0	0	0	1
7	B	65	0	0	1	0
All	All	6620	0	6245	158	1

The all-atom clashscore is defined as the number of clashes found per 1000 atoms (including hydrogen atoms). The all-atom clashscore for this structure is 12.

All (158) close contacts within the same asymmetric unit are listed below, sorted by their clash magnitude.

Atom-1	Atom-2	Interatomic distance (Å)	Clash overlap (Å)
1:B:221:ARG:HE	1:B:234:VAL:HG11	1.18	1.04
1:A:258:LEU:HD13	1:A:268:LEU:HD23	1.50	0.92
1:B:221:ARG:NE	1:B:234:VAL:HG11	1.83	0.92
1:A:432:ASN:HD22	1:A:433:TYR:N	1.77	0.83
1:A:258:LEU:HD13	1:A:268:LEU:CD2	2.09	0.82
1:A:210:TRP:HB2	1:A:258:LEU:HB3	1.63	0.81
1:B:144:TRP:HB2	2:B:1861:HEC:HBC3	1.67	0.77
1:B:272:PRO:HD2	1:B:275:LEU:HD12	1.67	0.75
1:A:90:LEU:HD23	1:A:94:ARG:NH2	2.05	0.72
1:A:223:GLN:OE1	1:A:223:GLN:HA	1.89	0.71
6:B:865:CL:CL	4:B:1864:327:H10B	2.28	0.71
1:B:334:CYS:SG	1:B:342:LEU:HD13	2.31	0.70
4:A:864:327:H10B	6:A:1865:CL:CL	2.30	0.69
1:A:432:ASN:HD22	1:A:432:ASN:C	1.97	0.67
1:B:110:GLN:HE21	1:B:114:GLN:HE21	1.41	0.67
1:B:336:PRO:HA	1:B:340:ASN:HB2	1.78	0.66
1:B:256:PRO:HB3	1:B:270:LEU:HD23	1.77	0.66
1:B:144:TRP:CZ3	1:B:156:TRP:HA	2.32	0.65
1:B:342:LEU:HB2	7:B:1867:HOH:O	1.98	0.64
1:A:119:VAL:O	1:A:123:VAL:HG23	1.98	0.63
1:B:144:TRP:CE3	1:B:156:TRP:HA	2.33	0.63
1:B:210:TRP:HB2	1:B:258:LEU:HB3	1.80	0.63
1:A:211:ASN:HA	1:A:236:ILE:CD1	2.29	0.63
1:A:366:VAL:O	1:A:370:VAL:HG23	1.99	0.63
1:A:213:GLN:CD	4:A:864:327:H10	2.19	0.63
1:A:37:PHE:CD2	1:A:52:THR:HA	2.34	0.62
1:A:144:TRP:HB2	2:A:861:HEC:HBC3	1.80	0.62

Continued on next page...

*Continued from previous page...*

Atom-1	Atom-2	Interatomic distance (Å)	Clash overlap (Å)
1:B:69:LEU:HB3	1:B:72:LEU:HD12	1.81	0.62
1:B:331:ARG:NH1	1:B:335:ASP:OD2	2.33	0.61
1:A:429:GLU:OE2	1:B:72:LEU:HD23	2.00	0.61
1:A:182:LYS:HG3	1:A:275:LEU:HD22	1.83	0.60
1:B:208:ARG:NH2	1:B:445:PRO:HD3	2.17	0.60
1:B:325:SER:OG	1:B:385:ASP:HA	2.02	0.60
1:A:211:ASN:HA	1:A:236:ILE:HD12	1.84	0.59
1:A:364:ALA:O	1:A:368:ILE:HG13	2.02	0.59
1:A:213:GLN:NE2	4:A:864:327:H10	2.18	0.59
1:A:37:PHE:HD2	1:A:52:THR:HA	1.68	0.59
1:A:215:VAL:O	1:A:216:ARG:HG2	2.03	0.58
1:B:190:LEU:HD12	1:B:322:TRP:HB3	1.84	0.58
1:B:221:ARG:HE	1:B:234:VAL:CG1	2.04	0.58
1:A:441:TYR:OH	2:A:861:HEC:O2D	2.19	0.56
1:B:90:LEU:HD23	1:B:94:ARG:NH2	2.21	0.56
1:B:182:LYS:HG3	1:B:275:LEU:HD21	1.86	0.56
1:A:426:PHE:O	5:A:866:MPD:H12	2.05	0.55
1:B:213:GLN:CD	1:B:216:ARG:HD3	2.26	0.55
1:A:37:PHE:CD2	1:A:52:THR:HG22	2.41	0.55
1:A:213:GLN:HB2	1:A:216:ARG:CG	2.37	0.55
1:A:169:SER:OG	1:A:172:GLU:HG3	2.07	0.54
1:A:281:LEU:HG	1:A:295:ARG:HA	1.89	0.54
1:A:412:ALA:HB1	5:A:1867:MPD:H52	1.90	0.54
1:A:144:TRP:CE3	1:A:156:TRP:HA	2.43	0.53
1:B:272:PRO:O	1:B:275:LEU:HB2	2.08	0.53
1:B:256:PRO:HB3	1:B:270:LEU:CD2	2.37	0.53
1:B:216:ARG:HG3	1:B:216:ARG:HH11	1.73	0.53
1:B:221:ARG:CZ	1:B:234:VAL:HG11	2.38	0.53
1:A:429:GLU:CD	1:B:72:LEU:HD23	2.29	0.53
1:A:321:GLY:N	4:A:864:327:H5	2.22	0.53
1:A:144:TRP:CZ3	1:A:156:TRP:HA	2.43	0.53
1:B:42:ASN:HD22	1:B:428:GLN:NE2	2.07	0.53
1:A:213:GLN:HB2	1:A:216:ARG:HG2	1.90	0.53
1:A:330:THR:O	1:A:334:CYS:HB2	2.09	0.52
1:B:213:GLN:HB2	1:B:216:ARG:HD3	1.90	0.52
1:A:245:TRP:HB2	1:A:268:LEU:HD13	1.91	0.52
1:A:63:CYS:HB3	1:B:63:CYS:CB	2.40	0.52
1:B:221:ARG:NE	1:B:234:VAL:CG1	2.66	0.52
1:B:321:GLY:N	4:B:1864:327:H5	2.25	0.51
1:A:73:VAL:CG2	5:A:1867:MPD:HM2	2.41	0.51
1:B:203:GLY:O	1:B:204:ARG:HB2	2.09	0.51

*Continued on next page...*

*Continued from previous page...*

Atom-1	Atom-2	Interatomic distance (Å)	Clash overlap (Å)
1:B:364:ALA:O	1:B:368:ILE:HG13	2.10	0.51
1:B:90:LEU:O	1:B:94:ARG:HG3	2.10	0.51
4:A:864:327:C10	6:A:1865:CL:CL	2.96	0.51
1:B:330:THR:HG21	1:B:418:ILE:HG23	1.92	0.51
1:B:213:GLN:OE1	4:B:1864:327:H10	2.12	0.50
1:A:149:ARG:HB2	2:A:861:HEC:HAD2	1.93	0.50
1:B:115:ARG:O	1:B:119:VAL:HG13	2.12	0.50
1:B:286:LEU:HD13	1:B:288:TRP:CZ2	2.47	0.50
1:B:190:LEU:HD12	1:B:322:TRP:CB	2.42	0.49
1:A:436:SER:HA	1:A:437:PRO:C	2.33	0.49
1:B:283:HIS:CG	1:B:284:PRO:HD2	2.47	0.49
1:B:419:SER:HB3	1:B:422:LEU:HD12	1.94	0.48
1:A:195:THR:O	1:A:317:ALA:HA	2.14	0.48
1:B:144:TRP:CH2	2:B:1861:HEC:HMC3	2.48	0.48
1:B:223:GLN:O	1:B:224:ASP:HB3	2.14	0.48
1:A:274:GLU:N	1:A:274:GLU:CD	2.67	0.48
1:A:429:GLU:OE2	1:B:72:LEU:CD2	2.60	0.48
1:B:146:ASN:O	1:B:148:PRO:HD3	2.14	0.48
1:A:306:LEU:HD23	1:A:306:LEU:C	2.35	0.47
1:B:345:VAL:O	1:B:349:MET:HG3	2.14	0.47
1:B:130:GLN:N	1:B:130:GLN:OE1	2.47	0.47
1:B:38:PRO:HD2	1:B:51:ASP:O	2.14	0.47
1:A:258:LEU:HD13	1:A:268:LEU:HD21	1.96	0.47
5:A:866:MPD:H53	1:B:412:ALA:HB1	1.97	0.47
1:A:274:GLU:H	1:A:274:GLU:CD	2.18	0.46
1:B:216:ARG:NH1	1:B:216:ARG:HG3	2.30	0.46
6:B:865:CL:CL	4:B:1864:327:C10	2.97	0.46
1:A:197:PHE:HB3	1:A:198:PRO:HD2	1.98	0.46
1:A:325:SER:OG	1:A:385:ASP:HA	2.15	0.46
1:A:432:ASN:ND2	1:A:432:ASN:C	2.68	0.46
1:A:228:ARG:NH1	1:A:251:ARG:HG3	2.30	0.46
1:A:44:GLU:HG3	1:B:336:PRO:HG2	1.96	0.46
1:A:409:ALA:HB3	1:A:430:MET:HB3	1.97	0.46
1:A:256:PRO:HB3	1:A:270:LEU:CD2	2.47	0.45
1:B:90:LEU:HD11	1:B:120:GLU:HA	1.98	0.45
1:B:118:GLU:OE1	1:B:132:ARG:NH2	2.48	0.45
1:B:213:GLN:HB2	1:B:216:ARG:HG2	1.99	0.45
1:B:213:GLN:CD	4:B:1864:327:H10	2.36	0.45
1:A:63:CYS:HB3	1:B:63:CYS:HB3	1.99	0.45
1:A:283:HIS:CG	1:A:284:PRO:HD2	2.52	0.45
1:B:93:ALA:O	1:B:97:ILE:HG12	2.17	0.45

*Continued on next page...*

*Continued from previous page...*

Atom-1	Atom-2	Interatomic distance (Å)	Clash overlap (Å)
1:A:213:GLN:NE2	4:A:864:327:C10	2.80	0.44
1:A:144:TRP:CH2	2:A:861:HEC:HMC3	2.52	0.44
1:B:201:CYS:HA	1:B:202:PRO:HD3	1.84	0.44
1:B:149:ARG:HB2	2:B:1861:HEC:HAD2	2.00	0.44
1:B:182:LYS:CG	1:B:275:LEU:HD21	2.48	0.44
1:A:435:LEU:O	1:A:438:ALA:HB2	2.18	0.44
1:B:177:ILE:O	1:B:181:ILE:HG13	2.18	0.44
1:B:330:THR:O	1:B:334:CYS:HB2	2.18	0.43
1:B:386:HIS:O	1:B:390:THR:HG23	2.17	0.43
1:A:89:LEU:O	1:A:89:LEU:HD12	2.18	0.43
1:A:412:ALA:HB1	5:A:1867:MPD:C5	2.48	0.43
2:A:861:HEC:HBB3	2:A:861:HEC:HHC	2.00	0.43
1:B:283:HIS:ND1	1:B:284:PRO:HD2	2.34	0.43
1:A:362:ASP:O	1:A:366:VAL:HG23	2.18	0.43
1:B:373:LEU:O	1:B:377:GLN:HG3	2.19	0.43
1:A:144:TRP:HB2	2:A:861:HEC:CBC	2.47	0.43
1:B:274:GLU:HG3	1:B:274:GLU:H	1.46	0.43
1:B:340:ASN:CG	1:B:340:ASN:O	2.57	0.43
1:B:333:LEU:O	1:B:341:ILE:HG12	2.19	0.43
1:A:201:CYS:HA	1:A:202:PRO:HD3	1.89	0.42
1:A:63:CYS:CB	1:B:63:CYS:HB3	2.49	0.42
1:B:330:THR:HG21	1:B:417:PRO:HB2	2.01	0.42
1:A:150:CYS:HB2	2:A:861:HEC:ND	2.34	0.42
1:B:306:LEU:HD23	1:B:306:LEU:C	2.40	0.42
1:B:324:MET:HA	1:B:384:VAL:O	2.20	0.42
1:B:223:GLN:O	1:B:224:ASP:CB	2.67	0.42
1:B:436:SER:HA	1:B:437:PRO:C	2.40	0.42
1:B:332:ASN:ND2	6:B:865:CL:CL	2.85	0.42
1:B:104:ILE:HD12	1:B:106:ARG:HG3	2.02	0.42
1:A:180:HIS:ND1	1:A:195:THR:OG1	2.44	0.41
1:B:197:PHE:HB3	1:B:198:PRO:HD2	2.02	0.41
1:B:326:THR:HB	1:B:417:PRO:HG2	2.01	0.41
1:A:228:ARG:HD3	1:A:249:ASN:O	2.19	0.41
1:A:306:LEU:HD23	1:A:307:LEU:N	2.35	0.41
1:A:182:LYS:HG3	1:A:275:LEU:CD2	2.50	0.41
1:A:197:PHE:HB3	1:A:198:PRO:CD	2.50	0.41
1:B:129:TYR:C	1:B:130:GLN:OE1	2.59	0.41
1:A:427:HIS:HE1	1:B:331:ARG:NH1	2.19	0.41
1:A:211:ASN:HA	1:A:236:ILE:HD11	1.99	0.41
1:B:362:ASP:O	1:B:366:VAL:HG23	2.20	0.41
1:B:147:ALA:HA	1:B:148:PRO:HD3	1.89	0.41

*Continued on next page...*

Continued from previous page...

Atom-1	Atom-2	Interatomic distance (Å)	Clash overlap (Å)
1:B:302:VAL:HB	1:B:319:PHE:CE1	2.55	0.41
1:A:256:PRO:HB3	1:A:270:LEU:HD23	2.03	0.41
2:B:1861:HEC:HBC2	2:B:1861:HEC:HMC1	2.02	0.41
1:B:205:GLY:O	1:B:262:PRO:HB3	2.21	0.41
1:B:69:LEU:HB3	1:B:72:LEU:CD1	2.50	0.41
1:A:419:SER:HB3	1:A:422:LEU:HD12	2.03	0.40
1:B:195:THR:O	1:B:317:ALA:HA	2.21	0.40
1:A:63:CYS:HB3	1:B:63:CYS:HB2	2.04	0.40

All (1) symmetry-related close contacts are listed below. The label for Atom-2 includes the symmetry operator and encoded unit-cell translations to be applied.

Atom-1	Atom-2	Interatomic distance (Å)	Clash overlap (Å)
1:B:113:GLU:OE2	7:A:1906:HOH:O[3_545]	1.89	0.31

## 5.3 Torsion angles [i](#)

### 5.3.1 Protein backbone [i](#)

In the following table, the Percentiles column shows the percent Ramachandran outliers of the chain as a percentile score with respect to all X-ray entries followed by that with respect to entries of similar resolution.

The Analysed column shows the number of residues for which the backbone conformation was analysed, and the total number of residues.

Mol	Chain	Analysed	Favoured	Allowed	Outliers	Percentiles	
1	A	395/427 (92%)	377 (95%)	17 (4%)	1 (0%)	43	52
1	B	397/427 (93%)	371 (94%)	24 (6%)	2 (0%)	31	37
All	All	792/854 (93%)	748 (94%)	41 (5%)	3 (0%)	36	45

All (3) Ramachandran outliers are listed below:

Mol	Chain	Res	Type
1	A	224	ASP
1	B	224	ASP
1	B	204	ARG

### 5.3.2 Protein sidechains [i](#)

In the following table, the Percentiles column shows the percent sidechain outliers of the chain as a percentile score with respect to all X-ray entries followed by that with respect to entries of similar resolution.

The Analysed column shows the number of residues for which the sidechain conformation was analysed, and the total number of residues.

Mol	Chain	Analysed	Rotameric	Outliers	Percentiles	
1	A	332/359 (92%)	325 (98%)	7 (2%)	56	69
1	B	334/359 (93%)	329 (98%)	5 (2%)	67	78
All	All	666/718 (93%)	654 (98%)	12 (2%)	62	74

All (12) residues with a non-rotameric sidechain are listed below:

Mol	Chain	Res	Type
1	A	67	ARG
1	A	95	ASP
1	A	115	ARG
1	A	223	GLN
1	A	258	LEU
1	A	295	ARG
1	A	432	ASN
1	B	67	ARG
1	B	201	CYS
1	B	223	GLN
1	B	274	GLU
1	B	432	ASN

Some sidechains can be flipped to improve hydrogen bonding and reduce clashes. All (7) such sidechains are listed below:

Mol	Chain	Res	Type
1	A	99	GLN
1	A	432	ASN
1	B	99	GLN
1	B	110	GLN
1	B	223	GLN
1	B	428	GLN
1	B	432	ASN

### 5.3.3 RNA [i](#)

There are no RNA molecules in this entry.

## 5.4 Non-standard residues in protein, DNA, RNA chains [i](#)

There are no non-standard protein/DNA/RNA residues in this entry.

## 5.5 Carbohydrates [i](#)

There are no carbohydrates in this entry.

## 5.6 Ligand geometry [i](#)

Of 11 ligands modelled in this entry, 3 are monoatomic - leaving 8 for Mogul analysis.

In the following table, the Counts columns list the number of bonds (or angles) for which Mogul statistics could be retrieved, the number of bonds (or angles) that are observed in the model and the number of bonds (or angles) that are defined in the Chemical Component Dictionary. The Link column lists molecule types, if any, to which the group is linked. The Z score for a bond length (or angle) is the number of standard deviations the observed value is removed from the expected value. A bond length (or angle) with  $|Z| > 2$  is considered an outlier worth inspection. RMSZ is the root-mean-square of all Z scores of the bond lengths (or angles).

Mol	Type	Chain	Res	Link	Bond lengths			Bond angles		
					Counts	RMSZ	# Z  > 2	Counts	RMSZ	# Z  > 2
5	MPD	A	1866	-	7,7,7	0.56	0	9,10,10	0.63	0
5	MPD	A	1867	-	7,7,7	0.42	0	9,10,10	0.48	0
2	HEC	A	861	1	26,50,50	1.74	5 (19%)	18,82,82	2.81	5 (27%)
4	327	A	864	-	10,15,15	2.77	3 (30%)	2,20,20	1.93	1 (50%)
5	MPD	A	866	-	7,7,7	0.66	0	9,10,10	0.50	0
2	HEC	B	1861	1	26,50,50	1.79	6 (23%)	18,82,82	3.06	6 (33%)
4	327	B	1864	-	10,15,15	2.85	2 (20%)	2,20,20	2.14	1 (50%)
5	MPD	B	867	-	7,7,7	0.63	0	9,10,10	0.44	0

In the following table, the Chirals column lists the number of chiral outliers, the number of chiral centers analysed, the number of these observed in the model and the number defined in the Chemical Component Dictionary. Similar counts are reported in the Torsion and Rings columns. '-' means no outliers of that kind were identified.

Mol	Type	Chain	Res	Link	Chirals	Torsions	Rings
5	MPD	A	1866	-	-	0/5/5/5	0/0/0/0

*Continued on next page...*



*Continued from previous page...*

Mol	Type	Chain	Res	Link	Chirals	Torsions	Rings
5	MPD	A	1867	-	-	0/5/5/5	0/0/0/0
2	HEC	A	861	1	-	0/6/54/54	0/0/8/8
4	327	A	864	-	-	0/3/16/16	0/1/2/2
5	MPD	A	866	-	-	0/5/5/5	0/0/0/0
2	HEC	B	1861	1	-	0/6/54/54	0/0/8/8
4	327	B	1864	-	-	0/3/16/16	0/1/2/2
5	MPD	B	867	-	-	0/5/5/5	0/0/0/0

All (16) bond length outliers are listed below:

Mol	Chain	Res	Type	Atoms	Z	Observed(Å)	Ideal(Å)
2	A	861	HEC	C3B-C2B	-5.04	1.35	1.40
2	B	1861	HEC	C3B-C2B	-4.71	1.35	1.40
2	B	1861	HEC	C3C-C2C	-3.68	1.36	1.40
2	A	861	HEC	C3C-C2C	-2.83	1.37	1.40
4	A	864	327	C8-C1	-2.27	1.48	1.53
2	B	1861	HEC	C3B-C4B	2.07	1.46	1.43
2	B	1861	HEC	C4D-ND	2.09	1.40	1.36
2	A	861	HEC	CAA-C2A	2.29	1.56	1.52
2	B	1861	HEC	CAA-C2A	2.52	1.57	1.52
2	A	861	HEC	C1A-C2A	2.54	1.48	1.42
2	A	861	HEC	C3B-C4B	2.56	1.47	1.43
2	B	1861	HEC	C1A-C2A	2.99	1.49	1.42
4	A	864	327	C1-N1	3.77	1.53	1.47
4	B	1864	327	C1-N1	4.33	1.54	1.47
4	A	864	327	C7-C1	6.76	1.59	1.50
4	B	1864	327	C7-C1	6.99	1.59	1.50

All (13) bond angle outliers are listed below:

Mol	Chain	Res	Type	Atoms	Z	Observed(°)	Ideal(°)
2	B	1861	HEC	CBD-CAD-C3D	-9.81	93.73	112.48
2	A	861	HEC	CBD-CAD-C3D	-8.90	95.47	112.48
2	A	861	HEC	CMD-C2D-C1D	-2.32	124.89	128.46
2	B	1861	HEC	CMD-C2D-C1D	-2.31	124.91	128.46
2	B	1861	HEC	CAA-CBA-CGA	2.01	116.09	112.66
2	A	861	HEC	CMB-C2B-C3B	2.09	128.28	125.82
2	B	1861	HEC	CMB-C2B-C3B	2.22	128.43	125.82
2	B	1861	HEC	CMC-C2C-C3C	2.31	128.54	125.82
2	A	861	HEC	CMC-C2C-C3C	2.58	128.85	125.82
4	A	864	327	C7-O1-C3	2.72	122.04	115.58
4	B	1864	327	C7-O1-C3	3.01	122.74	115.58

*Continued on next page...*

*Continued from previous page...*

Mol	Chain	Res	Type	Atoms	Z	Observed(°)	Ideal(°)
2	A	861	HEC	CAD-CBD-CGD	5.28	121.68	112.66
2	B	1861	HEC	CAD-CBD-CGD	5.94	122.81	112.66

There are no chirality outliers.

There are no torsion outliers.

There are no ring outliers.

6 monomers are involved in 27 short contacts:

Mol	Chain	Res	Type	Clashes	Symm-Clashes
5	A	1867	MPD	3	0
2	A	861	HEC	7	0
4	A	864	327	6	0
5	A	866	MPD	2	0
2	B	1861	HEC	4	0
4	B	1864	327	5	0

## 5.7 Other polymers [i](#)

There are no such residues in this entry.

## 5.8 Polymer linkage issues [i](#)

There are no chain breaks in this entry.

## 6 Fit of model and data [i](#)

### 6.1 Protein, DNA and RNA chains [i](#)

In the following table, the column labelled ‘#RSRZ > 2’ contains the number (and percentage) of RSRZ outliers, followed by percent RSRZ outliers for the chain as percentile scores relative to all X-ray entries and entries of similar resolution. The OWAB column contains the minimum, median, 95<sup>th</sup> percentile and maximum values of the occupancy-weighted average B-factor per residue. The column labelled ‘Q < 0.9’ lists the number of (and percentage) of residues with an average occupancy less than 0.9.

Mol	Chain	Analysed	<RSRZ>	#RSRZ>2	OWAB(Å <sup>2</sup> )	Q<0.9
1	A	399/427 (93%)	-0.22	6 (1%) 73 71	24, 36, 54, 66	0
1	B	401/427 (93%)	-0.14	8 (1%) 65 62	23, 40, 58, 70	0
All	All	800/854 (93%)	-0.18	14 (1%) 68 65	23, 38, 56, 70	0

All (14) RSRZ outliers are listed below:

Mol	Chain	Res	Type	RSRZ
1	A	58	GLN	4.3
1	B	249	ASN	3.5
1	A	354	ARG	3.4
1	B	58	GLN	3.4
1	A	223	GLN	3.3
1	B	225	GLY	3.1
1	B	223	GLN	2.9
1	A	59	GLN	2.9
1	A	86	PRO	2.9
1	B	224	ASP	2.7
1	A	352	ASP	2.6
1	B	226	SER	2.3
1	B	221	ARG	2.0
1	B	86	PRO	2.0

### 6.2 Non-standard residues in protein, DNA, RNA chains [i](#)

There are no non-standard protein/DNA/RNA residues in this entry.

### 6.3 Carbohydrates [i](#)

There are no carbohydrates in this entry.

## 6.4 Ligands [i](#)

In the following table, the Atoms column lists the number of modelled atoms in the group and the number defined in the chemical component dictionary. The B-factors column lists the minimum, median, 95<sup>th</sup> percentile and maximum values of B factors of atoms in the group. The column labelled 'Q<0.9' lists the number of atoms with occupancy less than 0.9.

Mol	Type	Chain	Res	Atoms	RSCC	RSR	B-factors(Å <sup>2</sup> )	Q<0.9
5	MPD	A	866	8/8	0.74	0.51	66,67,69,71	0
5	MPD	A	1867	8/8	0.83	0.30	52,53,54,54	0
5	MPD	A	1866	8/8	0.90	0.28	54,56,57,58	0
6	CL	A	1865	1/1	0.91	0.14	52,52,52,52	0
5	MPD	B	867	8/8	0.91	0.23	54,56,56,58	0
4	327	A	864	14/14	0.92	0.24	42,46,49,53	0
6	CL	B	865	1/1	0.92	0.22	71,71,71,71	0
4	327	B	1864	14/14	0.93	0.21	43,45,50,53	0
2	HEC	A	861	43/43	0.95	0.16	33,35,48,53	0
2	HEC	B	1861	43/43	0.95	0.16	30,34,51,59	0
3	ZN	A	862	1/1	0.99	0.03	39,39,39,39	0

## 6.5 Other polymers [i](#)

There are no such residues in this entry.