



Full wwPDB X-ray Structure Validation Report ⓘ

Nov 5, 2023 – 07:22 PM EST

PDB ID : 1ED5
Title : BOVINE ENDOTHELIAL NITRIC OXIDE SYNTHASE HEME DOMAIN
COMPLEXED WITH NNA(H4B FREE)
Authors : Raman, C.S.; Li, H.; Martasek, P.; Southan, G.J.; Masters, B.S.S.; Poulos,
T.L.
Deposited on : 2000-01-26
Resolution : 1.80 Å(reported)

This is a Full wwPDB X-ray Structure Validation Report for a publicly released PDB entry.

We welcome your comments at validation@mail.wwpdb.org

A user guide is available at

<https://www.wwpdb.org/validation/2017/XrayValidationReportHelp>

with specific help available everywhere you see the ⓘ symbol.

The types of validation reports are described at

<http://www.wwpdb.org/validation/2017/FAQs#types>.

The following versions of software and data (see [references ⓘ](#)) were used in the production of this report:

MolProbity : 4.02b-467
Mogul : 1.8.5 (274361), CSD as541be (2020)
Xtrriage (Phenix) : 1.13
EDS : 2.36
buster-report : 1.1.7 (2018)
Percentile statistics : 20191225.v01 (using entries in the PDB archive December 25th 2019)
Refmac : 5.8.0158
CCP4 : 7.0.044 (Gargrove)
Ideal geometry (proteins) : Engh & Huber (2001)
Ideal geometry (DNA, RNA) : Parkinson et al. (1996)
Validation Pipeline (wwPDB-VP) : 2.36

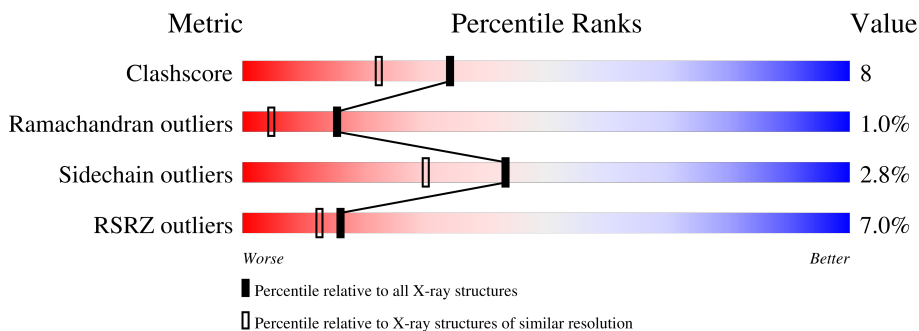
1 Overall quality at a glance

The following experimental techniques were used to determine the structure:

X-RAY DIFFRACTION

The reported resolution of this entry is 1.80 Å.

Percentile scores (ranging between 0-100) for global validation metrics of the entry are shown in the following graphic. The table shows the number of entries on which the scores are based.



Metric	Whole archive (#Entries)	Similar resolution (#Entries, resolution range(Å))
Clashscore	141614	6793 (1.80-1.80)
Ramachandran outliers	138981	6697 (1.80-1.80)
Sidechain outliers	138945	6696 (1.80-1.80)
RSRZ outliers	127900	5850 (1.80-1.80)

The table below summarises the geometric issues observed across the polymeric chains and their fit to the electron density. The red, orange, yellow and green segments of the lower bar indicate the fraction of residues that contain outliers for ≥ 3 , 2, 1 and 0 types of geometric quality criteria respectively. A grey segment represents the fraction of residues that are not modelled. The numeric value for each fraction is indicated below the corresponding segment, with a dot representing fractions $\leq 5\%$. The upper red bar (where present) indicates the fraction of residues that have poor fit to the electron density. The numeric value is given above the bar.

Mol	Chain	Length	Quality of chain
1	A	444	
1	B	444	

The following table lists non-polymeric compounds, carbohydrate monomers and non-standard residues in protein, DNA, RNA chains that are outliers for geometric or electron-density-fit criteria:

Mol	Type	Chain	Res	Chirality	Geometry	Clashes	Electron density
6	GOL	A	1880	-	-	X	-

2 Entry composition [i](#)

There are 8 unique types of molecules in this entry. The entry contains 7381 atoms, of which 0 are hydrogens and 0 are deuteriums.

In the tables below, the ZeroOcc column contains the number of atoms modelled with zero occupancy, the AltConf column contains the number of residues with at least one atom in alternate conformation and the Trace column contains the number of residues modelled with at most 2 atoms.

- Molecule 1 is a protein called NITRIC OXIDE SYNTHASE.

Mol	Chain	Residues	Atoms					ZeroOcc	AltConf	Trace
			Total	C	N	O	S			
1	A	416	3302	2099	584	603	16	0	0	0
1	B	414	3291	2092	582	601	16	0	0	0

There are 2 discrepancies between the modelled and reference sequences:

Chain	Residue	Modelled	Actual	Comment	Reference
A	100	ARG	CYS	conflict	UNP P29473
B	100	ARG	CYS	conflict	UNP P29473

- Molecule 2 is ACETATE ION (three-letter code: ACT) (formula: C₂H₃O₂).



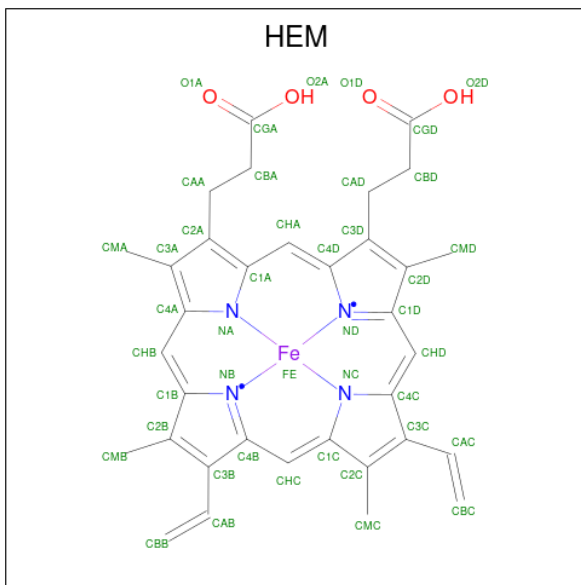
Mol	Chain	Residues	Atoms			ZeroOcc	AltConf
			Total	C	O		
2	A	1	4	2	2	0	0

Continued on next page...

Continued from previous page...

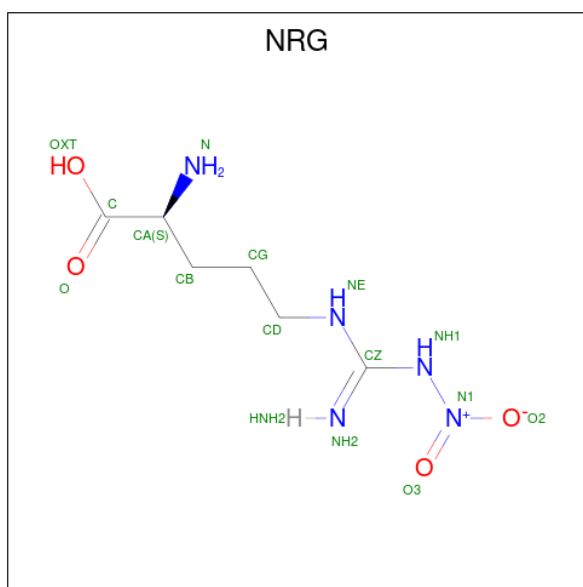
Mol	Chain	Residues	Atoms			ZeroOcc	AltConf
			Total	C	O		
2	B	1	4	2	2	0	0

- Molecule 3 is PROTOPORPHYRIN IX CONTAINING FE (three-letter code: HEM) (formula: $C_{34}H_{32}FeN_4O_4$).



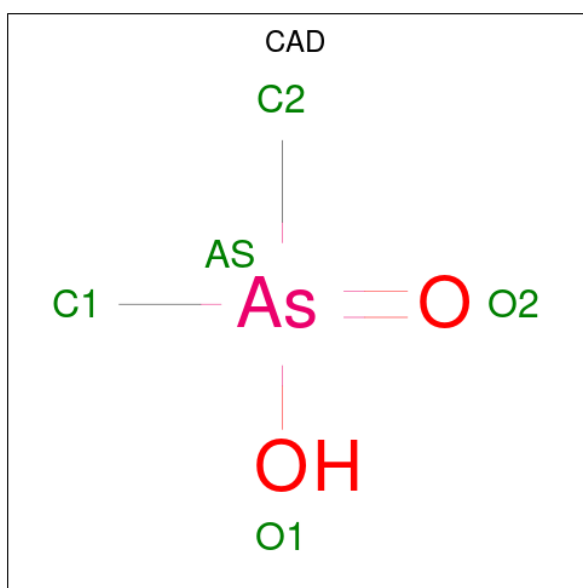
Mol	Chain	Residues	Atoms				ZeroOcc	AltConf	
			Total	C	Fe	N			O
3	A	1	43	34	1	4	4	0	0
3	B	1	43	34	1	4	4	0	0

- Molecule 4 is N-OMEGA-NITRO-L-ARGININE (three-letter code: NRG) (formula: $C_6H_{13}N_5O_4$).



Mol	Chain	Residues	Atoms			ZeroOcc	AltConf	
			Total	C	N			O
4	A	1	Total	C	N	O	0	0
			15	6	5	4		
4	B	1	Total	C	N	O	0	0
			15	6	5	4		

- Molecule 5 is CACODYLIC ACID (three-letter code: CAD) (formula: $C_2H_7AsO_2$).



Mol	Chain	Residues	Atoms		ZeroOcc	AltConf	
			Total	As			C
5	A	1	Total	As	C	0	0
			3	1	2		
5	B	1	Total	As	C	0	0
			3	1	2		

- Molecule 6 is GLYCEROL (three-letter code: GOL) (formula: $C_3H_8O_3$).



Mol	Chain	Residues	Atoms	ZeroOcc	AltConf
6	A	1	Total C O 6 3 3	0	0
6	A	1	Total C O 6 3 3	0	0
6	B	1	Total C O 6 3 3	0	0
6	B	1	Total C O 6 3 3	0	0

- Molecule 7 is ZINC ION (three-letter code: ZN) (formula: Zn).

Mol	Chain	Residues	Atoms	ZeroOcc	AltConf
7	B	1	Total Zn 1 1	0	0

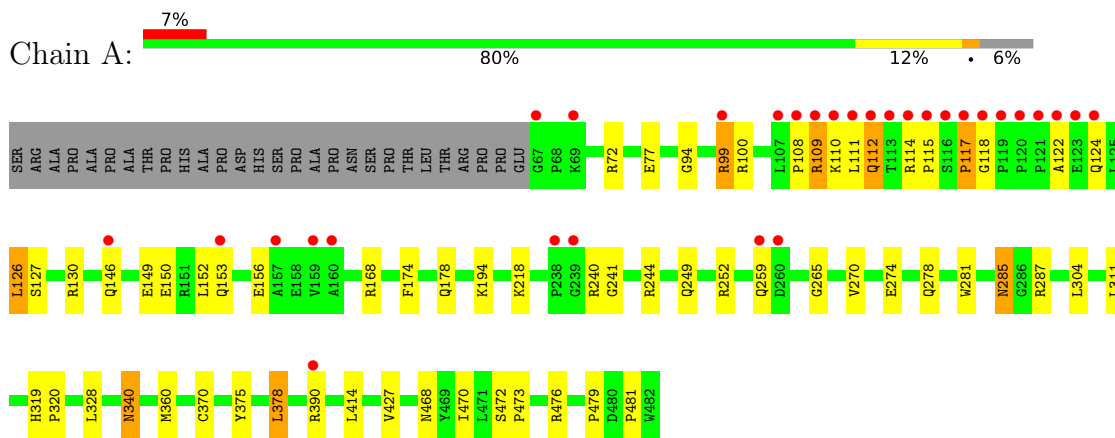
- Molecule 8 is water.

Mol	Chain	Residues	Atoms	ZeroOcc	AltConf
8	A	334	Total O 334 334	0	0
8	B	299	Total O 299 299	0	0

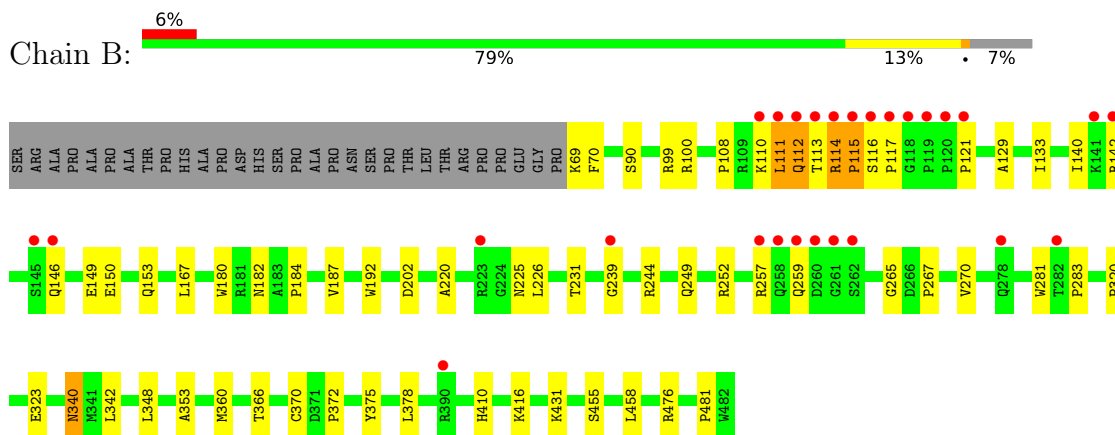
3 Residue-property plots [i](#)

These plots are drawn for all protein, RNA, DNA and oligosaccharide chains in the entry. The first graphic for a chain summarises the proportions of the various outlier classes displayed in the second graphic. The second graphic shows the sequence view annotated by issues in geometry and electron density. Residues are color-coded according to the number of geometric quality criteria for which they contain at least one outlier: green = 0, yellow = 1, orange = 2 and red = 3 or more. A red dot above a residue indicates a poor fit to the electron density ($RSRZ > 2$). Stretches of 2 or more consecutive residues without any outlier are shown as a green connector. Residues present in the sample, but not in the model, are shown in grey.

• Molecule 1: NITRIC OXIDE SYNTHASE



• Molecule 1: NITRIC OXIDE SYNTHASE



4 Data and refinement statistics

Property	Value	Source
Space group	P 21 21 21	Depositor
Cell constants a, b, c, α , β , γ	58.83Å 106.42Å 156.16Å 90.00° 90.00° 90.00°	Depositor
Resolution (Å)	39.46 – 1.80 39.46 – 1.80	Depositor EDS
% Data completeness (in resolution range)	84.3 (39.46-1.80) 86.5 (39.46-1.80)	Depositor EDS
R_{merge}	0.06	Depositor
R_{sym}	(Not available)	Depositor
$\langle I/\sigma(I) \rangle$ ¹	2.37 (at 1.79Å)	Xtrriage
Refinement program	CNS 0.9	Depositor
R, R_{free}	0.206 , 0.238 0.206 , (Not available)	Depositor DCC
R_{free} test set	No test flags present.	wwPDB-VP
Wilson B-factor (Å ²)	26.4	Xtrriage
Anisotropy	0.377	Xtrriage
Bulk solvent k_{sol} (e/Å ³), B_{sol} (Å ²)	0.38 , 58.1	EDS
L-test for twinning ²	$\langle L \rangle = 0.49$, $\langle L^2 \rangle = 0.33$	Xtrriage
Estimated twinning fraction	No twinning to report.	Xtrriage
F_o, F_c correlation	0.96	EDS
Total number of atoms	7381	wwPDB-VP
Average B, all atoms (Å ²)	37.0	wwPDB-VP

Xtrriage's analysis on translational NCS is as follows: *The largest off-origin peak in the Patterson function is 4.11% of the height of the origin peak. No significant pseudotranslation is detected.*

¹Intensities estimated from amplitudes.

²Theoretical values of $\langle |L| \rangle$, $\langle L^2 \rangle$ for acentric reflections are 0.5, 0.333 respectively for untwinned datasets, and 0.375, 0.2 for perfectly twinned datasets.

5 Model quality [i](#)

5.1 Standard geometry [i](#)

Bond lengths and bond angles in the following residue types are not validated in this section: GOL, NRG, ZN, CAD, ACT, HEM

The Z score for a bond length (or angle) is the number of standard deviations the observed value is removed from the expected value. A bond length (or angle) with $|Z| > 5$ is considered an outlier worth inspection. RMSZ is the root-mean-square of all Z scores of the bond lengths (or angles).

Mol	Chain	Bond lengths		Bond angles	
		RMSZ	# Z >5	RMSZ	# Z >5
1	A	0.33	0/3397	0.59	1/4631 (0.0%)
1	B	0.33	0/3385	0.60	1/4614 (0.0%)
All	All	0.33	0/6782	0.59	2/9245 (0.0%)

There are no bond length outliers.

All (2) bond angle outliers are listed below:

Mol	Chain	Res	Type	Atoms	Z	Observed(°)	Ideal(°)
1	B	360	MET	N-CA-C	-5.86	95.17	111.00
1	A	360	MET	N-CA-C	-5.22	96.91	111.00

There are no chirality outliers.

There are no planarity outliers.

5.2 Too-close contacts [i](#)

In the following table, the Non-H and H(model) columns list the number of non-hydrogen atoms and hydrogen atoms in the chain respectively. The H(added) column lists the number of hydrogen atoms added and optimized by MolProbity. The Clashes column lists the number of clashes within the asymmetric unit, whereas Symm-Clashes lists symmetry-related clashes.

Mol	Chain	Non-H	H(model)	H(added)	Clashes	Symm-Clashes
1	A	3302	0	3215	58	0
1	B	3291	0	3205	53	0
2	A	4	0	3	0	0
2	B	4	0	3	0	0
3	A	43	0	30	1	0
3	B	43	0	30	0	0
4	A	15	0	11	1	0

Continued on next page...

Continued from previous page...

Mol	Chain	Non-H	H(model)	H(added)	Clashes	Symm-Clashes
4	B	15	0	11	0	0
5	A	3	0	0	0	0
5	B	3	0	0	0	0
6	A	12	0	16	6	0
6	B	12	0	16	3	0
7	B	1	0	0	0	0
8	A	334	0	0	4	0
8	B	299	0	0	3	0
All	All	7381	0	6540	111	0

The all-atom clashscore is defined as the number of clashes found per 1000 atoms (including hydrogen atoms). The all-atom clashscore for this structure is 8.

All (111) close contacts within the same asymmetric unit are listed below, sorted by their clash magnitude.

Atom-1	Atom-2	Interatomic distance (Å)	Clash overlap (Å)
1:A:99:ARG:HB2	1:A:99:ARG:HH11	1.16	1.03
1:B:112:GLN:HG3	1:B:113:THR:H	1.29	0.98
1:A:115:PRO:HD3	1:A:479:PRO:HG2	1.47	0.96
6:A:1890:GOL:H12	8:A:2041:HOH:O	1.72	0.89
1:A:126:LEU:HD11	1:A:156:GLU:HG2	1.54	0.88
1:B:140:ILE:HD12	1:B:142:ARG:HH11	1.41	0.86
1:B:114:ARG:HA	1:B:114:ARG:HH11	1.46	0.81
1:B:249:GLN:HB2	1:B:252:ARG:HD3	1.63	0.81
1:B:113:THR:HG21	1:B:342:LEU:HD13	1.66	0.77
1:B:375:TYR:HA	6:B:2880:GOL:H31	1.67	0.76
1:A:115:PRO:HD3	1:A:479:PRO:CG	2.17	0.72
1:B:114:ARG:HD3	1:B:115:PRO:HD2	1.72	0.72
1:A:249:GLN:HB2	1:A:252:ARG:HD3	1.72	0.70
1:A:99:ARG:HB2	1:A:99:ARG:NH1	2.00	0.66
1:A:146:GLN:O	1:A:150:GLU:HG3	1.97	0.65
1:B:114:ARG:HH11	1:B:115:PRO:HD3	1.61	0.65
1:B:112:GLN:HG3	1:B:113:THR:N	2.09	0.64
1:A:94:GLY:O	1:A:110:LYS:HE2	1.98	0.64
1:A:99:ARG:HH11	1:A:99:ARG:CB	2.01	0.64
1:B:140:ILE:HB	1:B:142:ARG:NH1	2.12	0.64
1:B:113:THR:HG21	1:B:342:LEU:CD1	2.28	0.63
1:B:375:TYR:HA	6:B:2880:GOL:C3	2.28	0.63
1:A:114:ARG:HD2	1:A:479:PRO:HG3	1.84	0.60
1:A:114:ARG:HD2	1:A:479:PRO:CG	2.31	0.60
1:A:378:LEU:HB2	8:A:1969:HOH:O	2.03	0.59

Continued on next page...

Continued from previous page...

Atom-1	Atom-2	Interatomic distance (Å)	Clash overlap (Å)
1:B:114:ARG:NH1	1:B:115:PRO:HD3	2.19	0.58
1:B:378:LEU:HB2	8:B:2974:HOH:O	2.03	0.58
1:A:122:ALA:O	1:A:126:LEU:HB2	2.04	0.58
1:A:218:LYS:HG2	1:A:311:LEU:HD22	1.86	0.57
1:A:427:VAL:HG23	8:A:2248:HOH:O	2.05	0.56
1:A:265:GLY:O	6:A:1880:GOL:H11	2.05	0.56
1:B:114:ARG:HA	1:B:114:ARG:NH1	2.20	0.56
1:A:259:GLN:HE21	1:A:259:GLN:HA	1.71	0.56
1:A:194:LYS:HG2	1:A:194:LYS:O	2.05	0.56
1:A:370:CYS:SG	1:A:378:LEU:HD13	2.46	0.56
1:A:149:GLU:O	1:A:153:GLN:HG3	2.06	0.56
1:A:109:ARG:O	1:A:110:LYS:HD2	2.06	0.55
1:A:126:LEU:HD12	1:A:130:ARG:HE	1.72	0.54
1:A:115:PRO:CD	1:A:479:PRO:HG2	2.30	0.54
1:B:370:CYS:SG	1:B:378:LEU:HD13	2.47	0.54
1:B:140:ILE:HD12	1:B:142:ARG:NH1	2.18	0.53
1:A:115:PRO:O	1:A:117:PRO:HD3	2.08	0.53
1:B:114:ARG:HD3	1:B:115:PRO:CD	2.37	0.53
1:B:110:LYS:C	1:B:112:GLN:H	2.12	0.53
1:B:340:ASN:HD22	1:B:340:ASN:H	1.57	0.53
1:B:476:ARG:HG2	8:B:3211:HOH:O	2.09	0.52
1:A:114:ARG:HA	1:A:479:PRO:HG2	1.92	0.52
1:B:455:SER:HB3	1:B:458:LEU:HD12	1.90	0.52
1:B:146:GLN:O	1:B:150:GLU:HG3	2.10	0.52
1:A:111:LEU:HG	1:A:470:ILE:HD13	1.92	0.52
1:A:281:TRP:HB2	1:A:304:LEU:HD21	1.92	0.52
1:A:375:TYR:HA	6:A:1880:GOL:H12	1.93	0.51
1:A:111:LEU:O	1:A:112:GLN:C	2.49	0.51
1:B:320:PRO:HG3	1:B:410:HIS:CG	2.46	0.51
1:A:115:PRO:C	1:A:117:PRO:HD3	2.32	0.49
1:B:111:LEU:HD12	1:B:111:LEU:H	1.77	0.49
1:A:249:GLN:HB2	1:A:252:ARG:CD	2.42	0.49
1:A:270:VAL:O	1:A:274:GLU:HG3	2.12	0.49
1:A:319:HIS:CG	1:A:320:PRO:HD2	2.48	0.48
1:B:167:LEU:HG	1:B:348:LEU:HD12	1.95	0.48
1:B:117:PRO:HA	1:B:239:GLY:HA2	1.96	0.48
1:A:259:GLN:HA	1:A:259:GLN:NE2	2.28	0.47
1:B:149:GLU:O	1:B:153:GLN:HG3	2.13	0.47
1:B:249:GLN:HB2	1:B:252:ARG:CD	2.40	0.47
1:B:366:THR:O	1:B:370:CYS:HB2	2.14	0.47
1:B:111:LEU:HD12	1:B:111:LEU:N	2.28	0.47

Continued on next page...

Continued from previous page...

Atom-1	Atom-2	Interatomic distance (Å)	Clash overlap (Å)
1:A:108:PRO:O	1:A:110:LYS:N	2.48	0.47
1:A:472:SER:HA	1:A:473:PRO:C	2.34	0.47
1:B:117:PRO:HA	1:B:239:GLY:H	1.81	0.46
1:B:265:GLY:O	6:B:2880:GOL:H32	2.15	0.46
1:A:287:ARG:NH2	6:A:1880:GOL:O1	2.47	0.46
1:A:375:TYR:HD2	6:A:1880:GOL:HO1	1.63	0.46
1:A:114:ARG:HD2	1:A:479:PRO:HG2	1.97	0.46
1:B:202:ASP:CG	1:B:202:ASP:O	2.54	0.45
1:B:231:THR:O	1:B:353:ALA:HA	2.16	0.45
1:B:431:LYS:HG3	8:B:3011:HOH:O	2.16	0.45
1:A:94:GLY:C	1:A:110:LYS:HE2	2.36	0.44
1:A:244:ARG:NH2	1:A:481:PRO:HD3	2.32	0.44
1:B:281:TRP:O	1:B:283:PRO:HD3	2.17	0.44
1:A:111:LEU:HD23	1:A:476:ARG:NH1	2.32	0.44
1:B:129:ALA:O	1:B:133:ILE:HG12	2.16	0.44
1:B:244:ARG:NH2	1:B:481:PRO:HD3	2.32	0.44
3:A:1500:HEM:HBA2	4:A:1705:NRG:HCG1	2.00	0.44
1:A:114:ARG:HA	1:A:479:PRO:CG	2.48	0.44
1:B:340:ASN:HD22	1:B:340:ASN:N	2.15	0.44
1:B:69:LYS:HB2	1:B:70:PHE:H	1.64	0.43
1:B:110:LYS:O	1:B:112:GLN:N	2.51	0.43
1:A:285:ASN:HD22	1:A:285:ASN:C	2.21	0.43
1:B:108:PRO:HB3	1:B:111:LEU:HB2	2.00	0.43
1:A:240:ARG:HG2	1:A:241:GLY:N	2.34	0.43
1:B:182:ASN:O	1:B:184:PRO:HD3	2.19	0.43
1:B:116:SER:N	1:B:117:PRO:CD	2.81	0.43
1:A:77:GLU:HG3	1:B:372:PRO:HG2	2.00	0.43
1:B:267:PRO:O	1:B:270:VAL:HG23	2.18	0.43
1:B:340:ASN:H	1:B:340:ASN:ND2	2.16	0.43
1:A:274:GLU:O	1:A:278:GLN:HG3	2.19	0.42
1:B:140:ILE:O	1:B:142:ARG:HG3	2.19	0.42
1:A:127:SER:HA	1:A:130:ARG:CZ	2.50	0.42
1:A:152:LEU:O	1:A:156:GLU:HG3	2.20	0.42
1:B:180:TRP:CE3	1:B:192:TRP:HA	2.55	0.42
1:A:126:LEU:HD22	1:A:126:LEU:HA	1.87	0.42
1:B:220:ALA:O	1:B:226:LEU:HA	2.20	0.42
1:A:287:ARG:NE	6:A:1880:GOL:O1	2.52	0.41
1:A:117:PRO:O	1:A:118:GLY:C	2.59	0.41
1:A:109:ARG:HA	1:A:109:ARG:HD3	1.89	0.41
1:A:285:ASN:C	1:A:285:ASN:ND2	2.74	0.41
1:A:168:ARG:HD2	8:A:2049:HOH:O	2.21	0.41

Continued on next page...

Continued from previous page...

Atom-1	Atom-2	Interatomic distance (Å)	Clash overlap (Å)
1:A:174:PHE:CZ	1:A:178:GLN:HG3	2.56	0.41
1:A:340:ASN:H	1:A:340:ASN:HD22	1.68	0.40
1:A:99:ARG:NH2	1:B:90:SER:O	2.54	0.40
1:B:187:VAL:O	1:B:187:VAL:HG22	2.22	0.40

There are no symmetry-related clashes.

5.3 Torsion angles [i](#)

5.3.1 Protein backbone [i](#)

In the following table, the Percentiles column shows the percent Ramachandran outliers of the chain as a percentile score with respect to all X-ray entries followed by that with respect to entries of similar resolution.

The Analysed column shows the number of residues for which the backbone conformation was analysed, and the total number of residues.

Mol	Chain	Analysed	Favoured	Allowed	Outliers	Percentiles	
1	A	414/444 (93%)	391 (94%)	20 (5%)	3 (1%)	22	10
1	B	412/444 (93%)	387 (94%)	20 (5%)	5 (1%)	13	3
All	All	826/888 (93%)	778 (94%)	40 (5%)	8 (1%)	15	5

All (8) Ramachandran outliers are listed below:

Mol	Chain	Res	Type
1	A	117	PRO
1	B	259	GLN
1	A	109	ARG
1	A	112	GLN
1	B	111	LEU
1	B	112	GLN
1	B	115	PRO
1	B	121	PRO

5.3.2 Protein sidechains [i](#)

In the following table, the Percentiles column shows the percent sidechain outliers of the chain as a percentile score with respect to all X-ray entries followed by that with respect to entries of similar resolution.

The Analysed column shows the number of residues for which the sidechain conformation was analysed, and the total number of residues.

Mol	Chain	Analysed	Rotameric	Outliers	Percentiles	
1	A	354/377 (94%)	342 (97%)	12 (3%)	37	22
1	B	353/377 (94%)	345 (98%)	8 (2%)	50	37
All	All	707/754 (94%)	687 (97%)	20 (3%)	43	30

All (20) residues with a non-rotameric sidechain are listed below:

Mol	Chain	Res	Type
1	A	72	ARG
1	A	99	ARG
1	A	100	ARG
1	A	124	GLN
1	A	126	LEU
1	A	285	ASN
1	A	328	LEU
1	A	340	ASN
1	A	378	LEU
1	A	390	ARG
1	A	414	LEU
1	A	468	ASN
1	B	99	ARG
1	B	100	ARG
1	B	114	ARG
1	B	225	ASN
1	B	257	ARG
1	B	323	GLU
1	B	340	ASN
1	B	416	LYS

Sometimes sidechains can be flipped to improve hydrogen bonding and reduce clashes. All (19) such sidechains are listed below:

Mol	Chain	Res	Type
1	A	112	GLN
1	A	124	GLN
1	A	153	GLN
1	A	191	GLN
1	A	259	GLN
1	A	278	GLN
1	A	285	ASN

Continued on next page...

Continued from previous page...

Mol	Chain	Res	Type
1	A	340	ASN
1	A	376	ASN
1	A	468	ASN
1	B	89	GLN
1	B	112	GLN
1	B	191	GLN
1	B	222	ASN
1	B	225	ASN
1	B	258	GLN
1	B	278	GLN
1	B	340	ASN
1	B	405	ASN

5.3.3 RNA [i](#)

There are no RNA molecules in this entry.

5.4 Non-standard residues in protein, DNA, RNA chains [i](#)

There are no non-standard protein/DNA/RNA residues in this entry.

5.5 Carbohydrates [i](#)

There are no monosaccharides in this entry.

5.6 Ligand geometry [i](#)

Of 13 ligands modelled in this entry, 1 is monoatomic - leaving 12 for Mogul analysis.

In the following table, the Counts columns list the number of bonds (or angles) for which Mogul statistics could be retrieved, the number of bonds (or angles) that are observed in the model and the number of bonds (or angles) that are defined in the Chemical Component Dictionary. The Link column lists molecule types, if any, to which the group is linked. The Z score for a bond length (or angle) is the number of standard deviations the observed value is removed from the expected value. A bond length (or angle) with $|Z| > 2$ is considered an outlier worth inspection. RMSZ is the root-mean-square of all Z scores of the bond lengths (or angles).

Mol	Type	Chain	Res	Link	Bond lengths			Bond angles		
					Counts	RMSZ	$\# Z > 2$	Counts	RMSZ	$\# Z > 2$
6	GOL	A	1880	-	5,5,5	0.34	0	5,5,5	0.23	0
2	ACT	A	1860	-	3,3,3	0.87	0	3,3,3	0.78	0

Mol	Type	Chain	Res	Link	Bond lengths			Bond angles		
					Counts	RMSZ	# Z > 2	Counts	RMSZ	# Z > 2
5	CAD	A	1950	1	0,2,4	-	-	0,1,6	-	-
2	ACT	B	2860	-	3,3,3	0.85	0	3,3,3	0.80	0
4	NRG	B	2705	-	9,14,14	1.07	1 (11%)	11,17,17	0.84	0
6	GOL	B	2880	-	5,5,5	0.22	0	5,5,5	0.28	0
6	GOL	B	2890	-	5,5,5	0.19	0	5,5,5	0.24	0
4	NRG	A	1705	-	9,14,14	1.00	0	11,17,17	0.78	0
5	CAD	B	2950	1	0,2,4	-	-	0,1,6	-	-
3	HEM	B	2500	1	41,50,50	1.32	8 (19%)	45,82,82	1.23	4 (8%)
3	HEM	A	1500	1	41,50,50	1.37	6 (14%)	45,82,82	1.13	4 (8%)
6	GOL	A	1890	-	5,5,5	0.22	0	5,5,5	0.39	0

In the following table, the Chirals column lists the number of chiral outliers, the number of chiral centers analysed, the number of these observed in the model and the number defined in the Chemical Component Dictionary. Similar counts are reported in the Torsion and Rings columns. '-' means no outliers of that kind were identified.

Mol	Type	Chain	Res	Link	Chirals	Torsions	Rings
6	GOL	A	1880	-	-	0/4/4/4	-
4	NRG	B	2705	-	-	1/12/15/15	-
6	GOL	B	2880	-	-	2/4/4/4	-
6	GOL	B	2890	-	-	0/4/4/4	-
4	NRG	A	1705	-	-	2/12/15/15	-
3	HEM	B	2500	1	-	2/12/54/54	-
3	HEM	A	1500	1	-	2/12/54/54	-
6	GOL	A	1890	-	-	1/4/4/4	-

All (15) bond length outliers are listed below:

Mol	Chain	Res	Type	Atoms	Z	Observed(Å)	Ideal(Å)
3	A	1500	HEM	C3C-CAC	-3.23	1.41	1.47
3	A	1500	HEM	C4A-NA	3.10	1.42	1.36
3	B	2500	HEM	C3C-CAC	-2.80	1.42	1.47
3	B	2500	HEM	C3C-C2C	-2.55	1.36	1.40
3	A	1500	HEM	CAB-C3B	-2.50	1.40	1.47
3	B	2500	HEM	CHA-C4D	2.45	1.41	1.35
3	B	2500	HEM	CHB-C1B	2.31	1.40	1.35
3	A	1500	HEM	CHA-C4D	2.29	1.40	1.35
3	B	2500	HEM	CAB-C3B	-2.27	1.41	1.47
3	A	1500	HEM	C1A-NA	2.17	1.40	1.36
3	B	2500	HEM	CAA-C2A	2.11	1.55	1.52
3	B	2500	HEM	CMD-C2D	2.10	1.55	1.50

Continued on next page...

Continued from previous page...

Mol	Chain	Res	Type	Atoms	Z	Observed(Å)	Ideal(Å)
3	A	1500	HEM	CAA-C2A	2.04	1.55	1.52
4	B	2705	NRG	OXT-C	-2.03	1.23	1.30
3	B	2500	HEM	C2C-C1C	2.02	1.47	1.42

All (8) bond angle outliers are listed below:

Mol	Chain	Res	Type	Atoms	Z	Observed(°)	Ideal(°)
3	B	2500	HEM	CBA-CAA-C2A	-2.92	107.64	112.62
3	A	1500	HEM	C3B-C2B-C1B	2.77	108.54	106.49
3	B	2500	HEM	C2C-C3C-C4C	-2.73	104.99	106.90
3	A	1500	HEM	CBA-CAA-C2A	-2.52	108.32	112.62
3	B	2500	HEM	C4B-CHC-C1C	2.47	125.82	122.56
3	A	1500	HEM	C4B-C3B-C2B	-2.17	105.39	107.11
3	B	2500	HEM	C4C-CHD-C1D	2.04	125.25	122.56
3	A	1500	HEM	CMC-C2C-C3C	2.04	128.49	124.68

There are no chirality outliers.

All (10) torsion outliers are listed below:

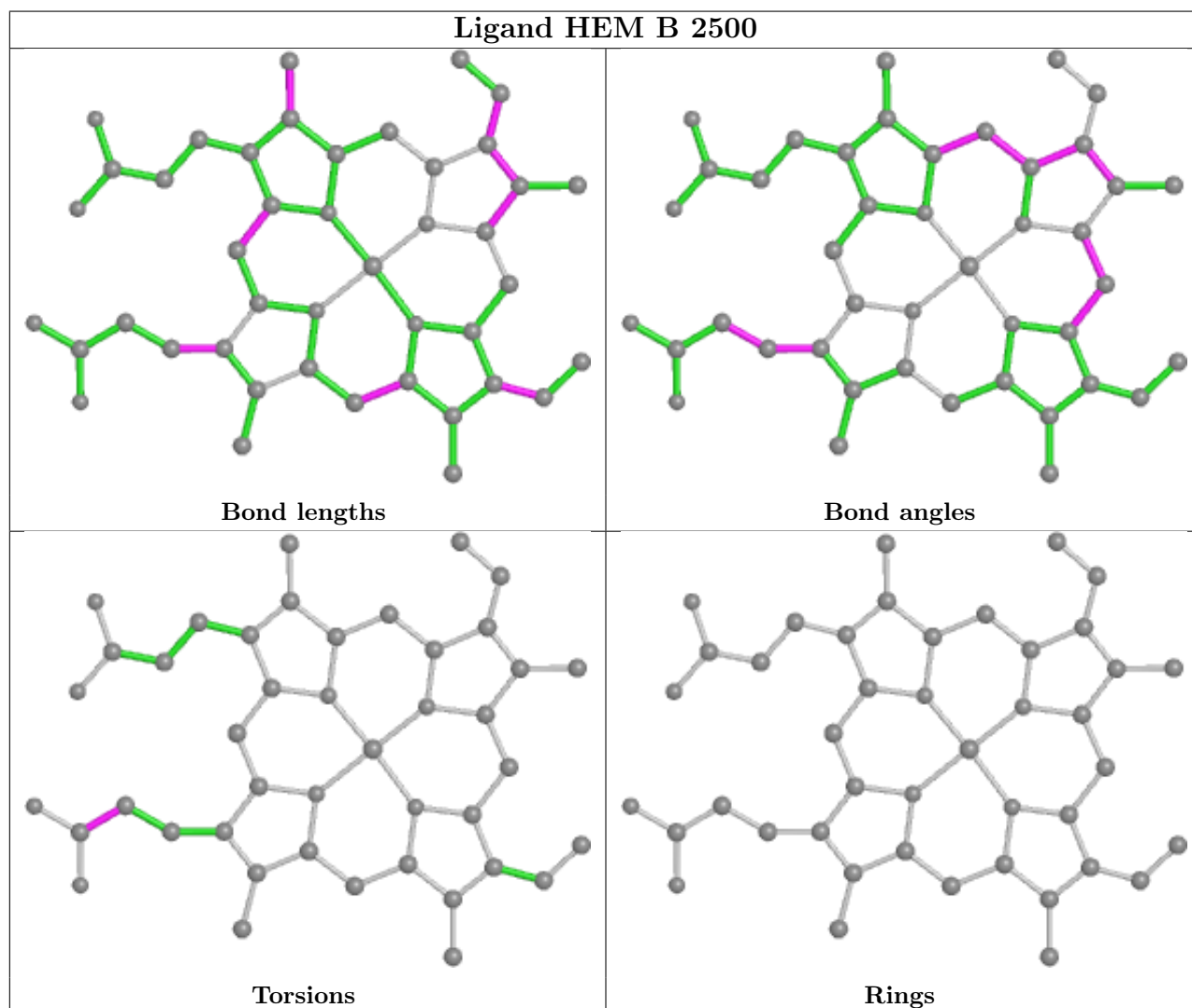
Mol	Chain	Res	Type	Atoms
6	B	2880	GOL	C1-C2-C3-O3
6	A	1890	GOL	O1-C1-C2-C3
6	B	2880	GOL	O2-C2-C3-O3
4	A	1705	NRG	O-C-CA-N
4	B	2705	NRG	O-C-CA-N
3	A	1500	HEM	CAA-CBA-CGA-O2A
3	A	1500	HEM	CAA-CBA-CGA-O1A
4	A	1705	NRG	NE-CD-CG-CB
3	B	2500	HEM	CAA-CBA-CGA-O2A
3	B	2500	HEM	CAA-CBA-CGA-O1A

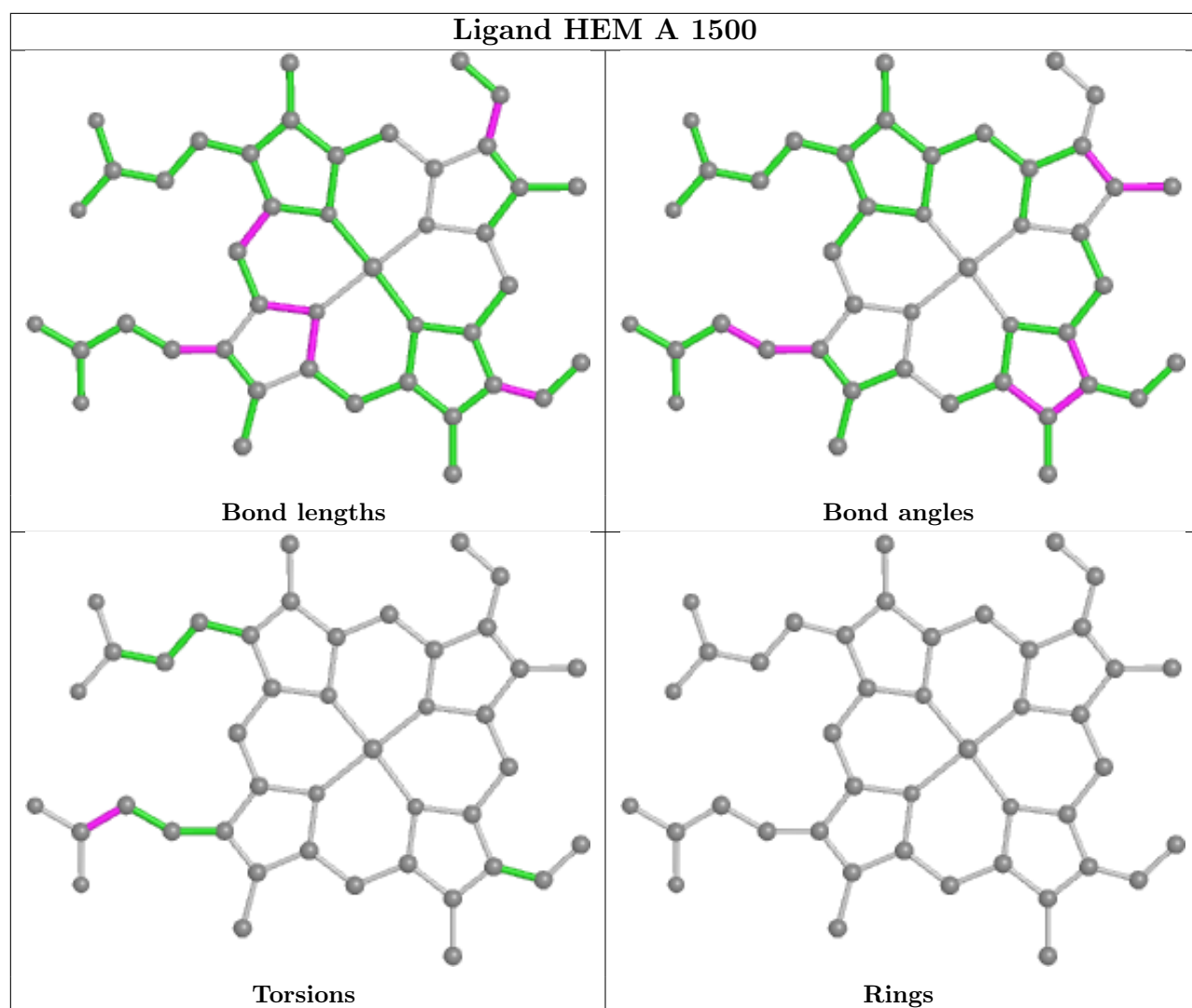
There are no ring outliers.

5 monomers are involved in 10 short contacts:

Mol	Chain	Res	Type	Clashes	Symm-Clashes
6	A	1880	GOL	5	0
6	B	2880	GOL	3	0
4	A	1705	NRG	1	0
3	A	1500	HEM	1	0
6	A	1890	GOL	1	0

The following is a two-dimensional graphical depiction of Mogul quality analysis of bond lengths, bond angles, torsion angles, and ring geometry for all instances of the Ligand of Interest. In addition, ligands with molecular weight > 250 and outliers as shown on the validation Tables will also be included. For torsion angles, if less than 5% of the Mogul distribution of torsion angles is within 10 degrees of the torsion angle in question, then that torsion angle is considered an outlier. Any bond that is central to one or more torsion angles identified as an outlier by Mogul will be highlighted in the graph. For rings, the root-mean-square deviation (RMSD) between the ring in question and similar rings identified by Mogul is calculated over all ring torsion angles. If the average RMSD is greater than 60 degrees and the minimal RMSD between the ring in question and any Mogul-identified rings is also greater than 60 degrees, then that ring is considered an outlier. The outliers are highlighted in purple. The color gray indicates Mogul did not find sufficient equivalents in the CSD to analyse the geometry.





5.7 Other polymers [i](#)

There are no such residues in this entry.

5.8 Polymer linkage issues [i](#)

There are no chain breaks in this entry.

6 Fit of model and data

6.1 Protein, DNA and RNA chains

In the following table, the column labelled ‘#RSRZ > 2’ contains the number (and percentage) of RSRZ outliers, followed by percent RSRZ outliers for the chain as percentile scores relative to all X-ray entries and entries of similar resolution. The OWAB column contains the minimum, median, 95th percentile and maximum values of the occupancy-weighted average B-factor per residue. The column labelled ‘Q < 0.9’ lists the number of (and percentage) of residues with an average occupancy less than 0.9.

Mol	Chain	Analysed	<RSRZ>	#RSRZ>2	OWAB(Å ²)	Q<0.9
1	A	416/444 (93%)	0.27	31 (7%) 14 11	20, 30, 63, 100	0
1	B	414/444 (93%)	0.29	27 (6%) 18 15	21, 33, 69, 100	0
All	All	830/888 (93%)	0.28	58 (6%) 16 13	20, 32, 68, 100	0

All (58) RSRZ outliers are listed below:

Mol	Chain	Res	Type	RSRZ
1	A	117	PRO	12.8
1	B	113	THR	11.8
1	A	115	PRO	10.8
1	A	118	GLY	10.5
1	A	113	THR	10.0
1	B	117	PRO	9.3
1	B	118	GLY	9.3
1	A	119	PRO	8.7
1	B	119	PRO	8.6
1	A	116	SER	8.2
1	B	114	ARG	8.2
1	B	115	PRO	7.8
1	A	111	LEU	7.7
1	B	116	SER	7.4
1	B	261	GLY	7.0
1	A	114	ARG	6.9
1	B	111	LEU	6.8
1	B	120	PRO	6.8
1	A	120	PRO	6.7
1	A	109	ARG	6.6
1	A	121	PRO	6.5
1	B	110	LYS	6.5
1	B	260	ASP	6.2
1	A	239	GLY	5.9

Continued on next page...

Continued from previous page...

Mol	Chain	Res	Type	RSRZ
1	A	110	LYS	5.8
1	B	259	GLN	5.8
1	B	121	PRO	5.2
1	A	123	GLU	5.0
1	A	112	GLN	4.9
1	A	259	GLN	4.7
1	A	122	ALA	4.2
1	B	390	ARG	3.3
1	B	145	SER	2.9
1	A	108	PRO	2.9
1	A	238	PRO	2.9
1	B	223	ARG	2.8
1	B	142	ARG	2.8
1	A	99	ARG	2.8
1	B	258	GLN	2.8
1	A	124	GLN	2.7
1	B	112	GLN	2.7
1	B	278	GLN	2.7
1	A	260	ASP	2.6
1	A	146	GLN	2.6
1	B	282	THR	2.5
1	A	157	ALA	2.5
1	B	262	SER	2.5
1	A	107	LEU	2.4
1	A	69	LYS	2.4
1	A	159	VAL	2.4
1	A	67	GLY	2.3
1	B	146	GLN	2.2
1	A	160	ALA	2.2
1	B	239	GLY	2.2
1	B	141	LYS	2.1
1	A	390	ARG	2.1
1	B	257	ARG	2.0
1	A	153	GLN	2.0

6.2 Non-standard residues in protein, DNA, RNA chains [\(i\)](#)

There are no non-standard protein/DNA/RNA residues in this entry.

6.3 Carbohydrates [i](#)

There are no monosaccharides in this entry.

6.4 Ligands [i](#)

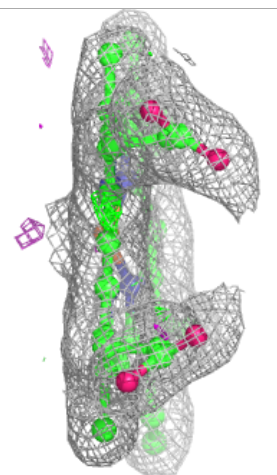
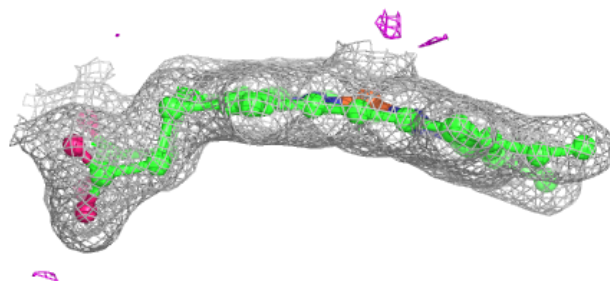
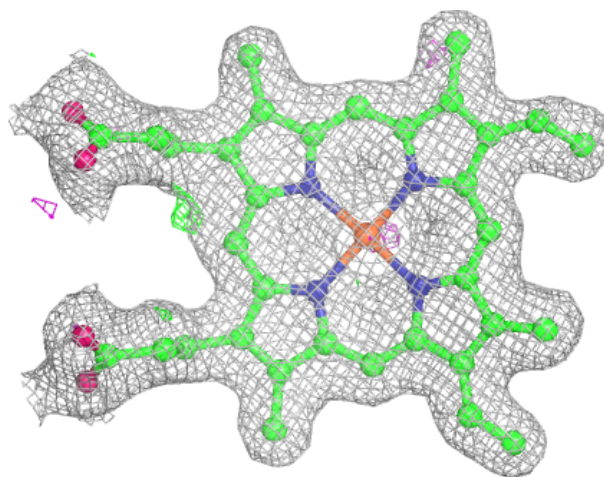
In the following table, the Atoms column lists the number of modelled atoms in the group and the number defined in the chemical component dictionary. The B-factors column lists the minimum, median, 95th percentile and maximum values of B factors of atoms in the group. The column labelled 'Q< 0.9' lists the number of atoms with occupancy less than 0.9.

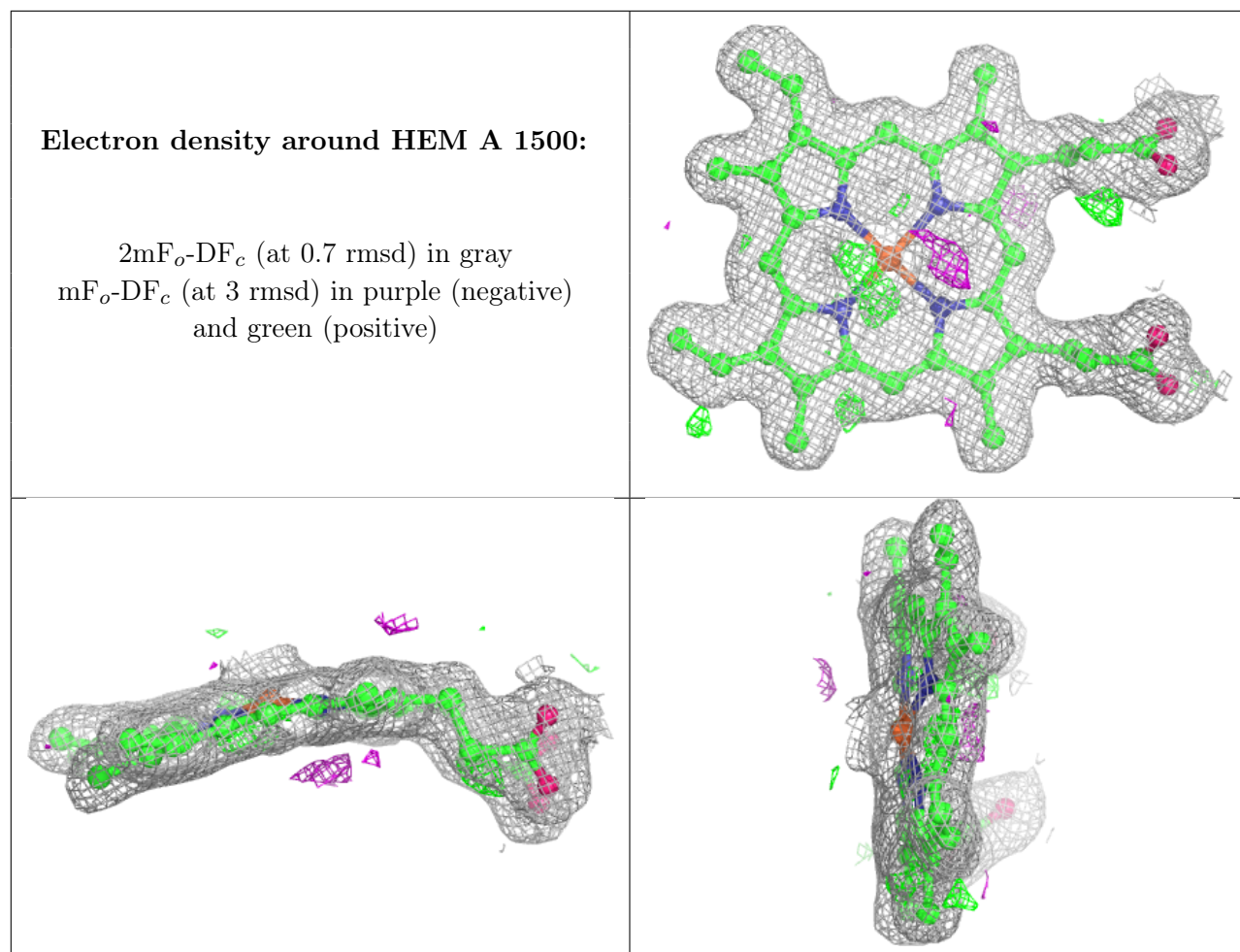
Mol	Type	Chain	Res	Atoms	RSCC	RSR	B-factors(\AA^2)	Q<0.9
6	GOL	B	2890	6/6	0.76	0.23	45,50,51,54	0
6	GOL	A	1880	6/6	0.82	0.28	48,50,54,57	0
6	GOL	B	2880	6/6	0.85	0.26	47,49,52,54	0
6	GOL	A	1890	6/6	0.85	0.30	51,54,57,59	0
4	NRG	A	1705	15/15	0.95	0.16	21,25,29,30	0
4	NRG	B	2705	15/15	0.95	0.15	22,26,28,30	0
5	CAD	A	1950	3/5	0.96	0.15	36,36,41,55	0
2	ACT	B	2860	4/4	0.97	0.10	37,38,38,44	0
2	ACT	A	1860	4/4	0.97	0.06	35,40,40,45	0
3	HEM	B	2500	43/43	0.98	0.12	17,25,33,35	0
3	HEM	A	1500	43/43	0.98	0.15	17,22,32,33	0
5	CAD	B	2950	3/5	0.99	0.08	48,48,49,51	0
7	ZN	B	900	1/1	1.00	0.12	22,22,22,22	0

The following is a graphical depiction of the model fit to experimental electron density of all instances of the Ligand of Interest. In addition, ligands with molecular weight > 250 and outliers as shown on the geometry validation Tables will also be included. Each fit is shown from different orientation to approximate a three-dimensional view.

Electron density around HEM B 2500:

$2mF_o-DF_c$ (at 0.7 rmsd) in gray
 mF_o-DF_c (at 3 rmsd) in purple (negative)
and green (positive)





6.5 Other polymers [i](#)

There are no such residues in this entry.