



## Full wwPDB EM Validation Report ⓘ

Feb 4, 2023 – 10:53 AM EST

PDB ID : 8EEQ  
EMDB ID : EMD-28055  
Title : CryoEM structures of bAE1 captured in multiple states.  
Authors : Zhekova, H.R.; Wang, W.G.; Jiang, J.S.; Tsirulnikov, K.; Muhammad-Khan, G.H.; Azimov, R.; Abuladze, N.; Kao, L.; Newman, D.; Noskov, S.Y.; Tieleman, P.; Zhou, Z.H.; Pushkin, A.; Kurtz, I.  
Deposited on : 2022-09-07  
Resolution : 6.30 Å(reported)

This is a Full wwPDB EM Validation Report for a publicly released PDB entry.

We welcome your comments at [validation@mail.wwpdb.org](mailto:validation@mail.wwpdb.org)

A user guide is available at

<https://www.wwpdb.org/validation/2017/EMValidationReportHelp>

with specific help available everywhere you see the ⓘ symbol.

The types of validation reports are described at

<http://www.wwpdb.org/validation/2017/FAQs#types>.

---

The following versions of software and data (see [references ⓘ](#)) were used in the production of this report:

EMDB validation analysis : 0.0.1.dev43  
MolProbity : 4.02b-467  
Percentile statistics : 20191225.v01 (using entries in the PDB archive December 25th 2019)  
MapQ : 1.9.9  
Ideal geometry (proteins) : Engh & Huber (2001)  
Ideal geometry (DNA, RNA) : Parkinson et al. (1996)  
Validation Pipeline (wwPDB-VP) : 2.32.1

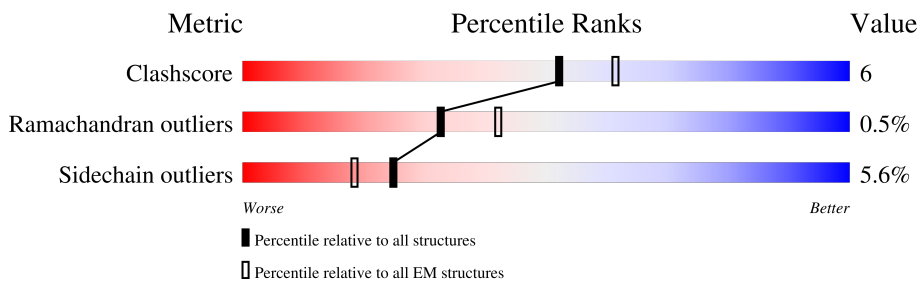
# 1 Overall quality at a glance

The following experimental techniques were used to determine the structure:

*ELECTRON MICROSCOPY*

The reported resolution of this entry is 6.30 Å.

Percentile scores (ranging between 0-100) for global validation metrics of the entry are shown in the following graphic. The table shows the number of entries on which the scores are based.



Metric	Whole archive (#Entries)	EM structures (#Entries)
Clashscore	158937	4297
Ramachandran outliers	154571	4023
Sidechain outliers	154315	3826

The table below summarises the geometric issues observed across the polymeric chains and their fit to the map. The red, orange, yellow and green segments of the bar indicate the fraction of residues that contain outliers for  $\geq 3$ , 2, 1 and 0 types of geometric quality criteria respectively. A grey segment represents the fraction of residues that are not modelled. The numeric value for each fraction is indicated below the corresponding segment, with a dot representing fractions  $\leq 5\%$ . The upper red bar (where present) indicates the fraction of residues that have poor fit to the EM map (all-atom inclusion  $< 40\%$ ). The numeric value is given above the bar.

Mol	Chain	Length	Quality of chain
1	A	930	
1	B	930	
1	C	930	
1	D	930	

## 2 Entry composition

There is only 1 type of molecule in this entry. The entry contains 11516 atoms, of which 0 are hydrogens and 0 are deuteriums.

In the tables below, the AltConf column contains the number of residues with at least one atom in alternate conformation and the Trace column contains the number of residues modelled with at most 2 atoms.

- Molecule 1 is a protein called Anion exchange protein.

Mol	Chain	Residues	Atoms					AltConf	Trace
			Total	C	N	O	S		
1	A	451	Total 3594	2420	563	595	16	0	0
1	C	451	Total 3592	2420	563	593	16	0	0
1	B	272	Total 2165	1395	365	396	9	0	0
1	D	272	Total 2165	1395	365	396	9	0	0







ALA	PRO	GLU	ILE	LEU	GLY	K228	S229	P230	Q231	D232	W233	E234	C242	A243	R244	F253	K257	E258	P259	M260	E261	P262	E263	PRO	LYS	PRO	GLU	GLY	SER	E270	E271	P272	A273	V274	P275	V276	R277	F278	L279	N289	I290	L295	A299	E305	R306	V307	Y313	L314	A315	Q316	S317				
LYS	LEU	PHE	GLY	LEU	VAL	ARG	ASP	ILE	ARG	ARG	ARG	TYR	PRO	SER	ARG	TYR	LEU	LEU	GLY	SER	ASP	ALA	LEU	SER	PRO	SER	ILE	LEU	VAL	PHE	ALA	ALA	PRO	SER	ILE	PHE	LYS	TYR	ASP	LEU	VAL	LYS	LYS	GLY	PRO	GLY	ASP	THR	PRO	GLU	ASN	MET	ILE	GLY	TRP
VAL	SER	GLU	LEU	LEU	SER	THR	ALA	ALA	GLN	LEU	GLY	ILE	PHE	SER	ARG	TYR	LEU	LEU	GLY	ASP	ALA	GLN	LEU	LEU	VAL	LEU	GLY	PHE	ALA	ALA	TYR	THR	SER	THR	TYR	CYS	PRO	ALA	ILE	THR	ASN	THR	ASN	ASN	PHE	LEU	GLY	ASP	THR	ASP	TRP				
LEU	ILE	LEU	THR	VAL	VAL	LEU	VAL	ALA	ALA	GLY	GLY	SER	PHE	LEU	VAL	ARG	PHE	ILE	SER	GLN	GLU	ILE	LEU	LEU	ILE	SER	SER	ILE	LEU	THR	GLY	TYR	THR	PHE	LEU	LYS	VAL	VAL	THR	ASN	ILE	PRO	PHE	LEU	GLN	ARG	VAL	THR	ASN	ASP					
VAL	THR	THR	ASP	LYS	PRO	GLN	ALA	ALA	THR	ASN	THR	ALA	LYS	LEU	LEU	VAL	LEU	VAL	GLY	VAL	GLY	THR	ASP	TRP	LEU	LEU	ARG	LYS	ILE	LEU	THR	ARG	VAL	PHE	ASN	GLY	GLY	ASP	LEU	THR	ALA	SER	PHE	ALA	LEU	VAL	PRO	VAL	THR	ILE					
MET	VAL	MET	VAL	VAL	ALA	LEU	ILE	ASP	THR	THR	THR	GLN	LYS	LEU	SER	VAL	PRO	GLY	GLY	ASN	PRO	THR	GLU	TRP	LEU	LEU	ARG	LYS	ILE	LEU	THR	ARG	VAL	VAL	ILE	GLY	GLY	THR	ILE	THR	ALA	SER	PHE	ALA	LEU	VAL	PRO	THR	ASP	TRP	ILE				
LEU	ILE	PHE	LEU	GLU	SER	GLN	ILE	THR	THR	ILE	ILE	SER	PRO	LYS	ARG	VAL	LYS	MET	GLY	PHE	HIS	LEU	LEU	LEU	LEU	LEU	ILE	ILE	GLY	ILE	GLY	VAL	GLY	GLY	GLY	VAL	VAL	VAL	THR	ILE	THR	ALA	SER	THR	THR	VAL	THR	ASP	TRP	ILE					
ALA	THR	THR	THR	MET	SER	LYS	ASP	THR	THR	THR	ALA	VAL	SER	GLN	ILE	GLY	VAL	LYS	VAL	GLY	HIS	LEU	LEU	VAL	VAL	LEU	LEU	ILE	VAL	VAL	THR	THR	THR	THR	THR	THR	THR	THR	THR	THR	THR	THR	THR	THR	THR	THR	THR	THR	THR	THR	THR	THR			
VAL	THR	SER	LEU	GLY	ILE	GLN	ILE	PHE	THR	THR	VAL	LEU	LEU	LEU	LEU	PRO	ARG	LYS	VAL	THR	TYR	ARG	VAL	VAL	VAL	VAL	VAL	VAL	VAL	VAL	VAL	VAL	VAL	VAL	VAL	VAL	VAL	VAL	VAL	VAL	VAL	VAL	VAL	VAL	VAL	VAL	VAL	VAL	VAL	VAL	VAL				
SER	ALA	PRO	PHE	ILE	LEU	LEU	LEU	THR	THR	VAL	VAL	LEU	ARG	ARG	PRO	LEU	PRO	LYS	PHE	ILE	PHE	ARG	VAL	VAL	VAL	VAL	VAL	VAL	VAL	VAL	VAL	VAL	VAL	VAL	VAL	VAL	VAL	VAL	VAL	VAL	VAL	VAL	VAL	VAL	VAL	VAL	VAL	VAL	VAL	VAL	VAL				

## 4 Experimental information

Property	Value	Source
EM reconstruction method	SINGLE PARTICLE	Depositor
Imposed symmetry	POINT, C1	Depositor
Number of particles used	90818	Depositor
Resolution determination method	FSC 0.143 CUT-OFF	Depositor
CTF correction method	PHASE FLIPPING AND AMPLITUDE CORRECTION; Estimated by CTFFIND4.	Depositor
Microscope	FEI TITAN KRIOS	Depositor
Voltage (kV)	300	Depositor
Electron dose ( $e^-/\text{\AA}^2$ )	52	Depositor
Minimum defocus (nm)	1400	Depositor
Maximum defocus (nm)	3200	Depositor
Magnification	36764	Depositor
Image detector	GATAN K2 SUMMIT (4k x 4k)	Depositor
Maximum map value	0.133	Depositor
Minimum map value	-0.030	Depositor
Average map value	0.000	Depositor
Map value standard deviation	0.008	Depositor
Recommended contour level	0.0496	Depositor
Map size (Å)	261.12, 261.12, 261.12	wwPDB
Map dimensions	192, 192, 192	wwPDB
Map angles (°)	90.0, 90.0, 90.0	wwPDB
Pixel spacing (Å)	1.36, 1.36, 1.36	Depositor



## 5 Model quality [i](#)

### 5.1 Standard geometry [i](#)

The Z score for a bond length (or angle) is the number of standard deviations the observed value is removed from the expected value. A bond length (or angle) with  $|Z| > 5$  is considered an outlier worth inspection. RMSZ is the root-mean-square of all Z scores of the bond lengths (or angles).

Mol	Chain	Bond lengths		Bond angles	
		RMSZ	# Z  >5	RMSZ	# Z  >5
1	A	0.28	0/3684	0.64	0/5014
1	B	0.35	0/2213	0.73	7/3006 (0.2%)
1	C	0.28	0/3682	0.64	0/5012
1	D	0.33	0/2213	0.62	0/3006
All	All	0.31	0/11792	0.65	7/16038 (0.0%)

There are no bond length outliers.

All (7) bond angle outliers are listed below:

Mol	Chain	Res	Type	Atoms	Z	Observed(°)	Ideal(°)
1	B	133	LEU	CA-CB-CG	11.11	140.85	115.30
1	B	132	ASP	CB-CA-C	9.58	129.57	110.40
1	B	255	ARG	CB-CA-C	9.11	128.62	110.40
1	B	305	GLU	CB-CA-C	7.95	126.30	110.40
1	B	131	LEU	CB-CA-C	6.00	121.59	110.20
1	B	329	LEU	CB-CA-C	5.45	120.56	110.20
1	B	329	LEU	N-CA-CB	5.42	121.25	110.40

There are no chirality outliers.

There are no planarity outliers.

### 5.2 Too-close contacts [i](#)

In the following table, the Non-H and H(model) columns list the number of non-hydrogen atoms and hydrogen atoms in the chain respectively. The H(added) column lists the number of hydrogen atoms added and optimized by MolProbity. The Clashes column lists the number of clashes within the asymmetric unit, whereas Symm-Clashes lists symmetry-related clashes.

Mol	Chain	Non-H	H(model)	H(added)	Clashes	Symm-Clashes
1	A	3594	0	3802	5	0
1	B	2165	0	2193	59	0

*Continued on next page...*

*Continued from previous page...*

Mol	Chain	Non-H	H(model)	H(added)	Clashes	Symm-Clashes
1	C	3592	0	3802	5	0
1	D	2165	0	2193	27	0
All	All	11516	0	11990	84	0

The all-atom clashscore is defined as the number of clashes found per 1000 atoms (including hydrogen atoms). The all-atom clashscore for this structure is 6.

All (84) close contacts within the same asymmetric unit are listed below, sorted by their clash magnitude.

Atom-1	Atom-2	Interatomic distance (Å)	Clash overlap (Å)
1:B:203:PRO:CG	1:B:291:ASN:ND2	2.04	1.21
1:B:203:PRO:HG3	1:B:291:ASN:ND2	1.53	1.20
1:B:67:VAL:HA	1:B:233:TRP:HA	1.20	1.18
1:B:203:PRO:HG3	1:B:291:ASN:HD21	1.02	1.04
1:B:203:PRO:HG2	1:B:291:ASN:ND2	1.81	0.94
1:B:67:VAL:HA	1:B:233:TRP:CA	1.99	0.92
1:D:231:GLN:O	1:D:233:TRP:N	2.03	0.91
1:B:204:SER:HA	1:B:294:GLN:NE2	1.90	0.86
1:B:203:PRO:HG2	1:B:291:ASN:HD22	1.41	0.84
1:B:338:LEU:HD13	1:D:109:LEU:HD13	1.65	0.78
1:D:67:VAL:HA	1:D:233:TRP:HA	1.66	0.77
1:B:203:PRO:CG	1:B:291:ASN:HD21	1.81	0.72
1:B:67:VAL:CA	1:B:233:TRP:HA	2.11	0.72
1:B:111:TYR:CD1	1:D:349:LEU:HD11	2.28	0.69
1:B:89:ALA:HA	1:B:104:TRP:HZ3	1.60	0.66
1:B:204:SER:HA	1:B:294:GLN:HE22	1.60	0.66
1:B:202:HIS:N	1:B:203:PRO:HD3	2.13	0.64
1:D:67:VAL:HA	1:D:233:TRP:CA	2.31	0.60
1:B:185:PRO:HG2	1:B:202:HIS:CD2	2.37	0.59
1:D:231:GLN:HG2	1:D:232:ASP:H	1.68	0.59
1:D:231:GLN:C	1:D:233:TRP:H	2.04	0.59
1:B:141:VAL:HG13	1:B:254:VAL:HG11	1.85	0.58
1:B:204:SER:HA	1:B:294:GLN:HE21	1.70	0.57
1:B:68:CYS:SG	1:B:233:TRP:HB3	2.46	0.56
1:B:111:TYR:CG	1:D:349:LEU:HD11	2.42	0.55
1:B:111:TYR:OH	1:D:345:ALA:HB1	2.08	0.54
1:B:207:THR:HG23	1:B:211:CYS:HB2	1.89	0.54
1:B:133:LEU:HG	1:B:254:VAL:HG13	1.91	0.53
1:B:203:PRO:O	1:B:204:SER:C	2.47	0.52
1:D:130:LEU:HD21	1:D:148:ARG:HG2	1.92	0.52
1:B:204:SER:O	1:B:205:LEU:HB3	2.10	0.52

*Continued on next page...*

*Continued from previous page...*

Atom-1	Atom-2	Interatomic distance (Å)	Clash overlap (Å)
1:D:231:GLN:C	1:D:233:TRP:N	2.62	0.52
1:C:462:THR:HG23	1:C:788:VAL:HG11	1.92	0.51
1:B:233:TRP:O	1:B:234:GLU:C	2.47	0.51
1:D:315:ALA:HB2	1:D:321:LEU:HD21	1.93	0.51
1:B:315:ALA:HB2	1:B:321:LEU:HD21	1.93	0.51
1:D:67:VAL:HG13	1:D:233:TRP:HA	1.93	0.51
1:B:204:SER:CA	1:B:294:GLN:NE2	2.70	0.51
1:A:462:THR:HG23	1:A:788:VAL:HG11	1.92	0.51
1:B:335:LEU:HD12	1:D:111:TYR:HE1	1.77	0.50
1:B:117:LEU:CD1	1:D:334:VAL:HG11	2.42	0.49
1:D:231:GLN:O	1:D:232:ASP:OD1	2.31	0.48
1:A:459:LEU:HD23	1:A:792:ILE:HG22	1.95	0.47
1:B:334:VAL:HG22	1:D:334:VAL:HG13	1.97	0.47
1:A:518:LEU:HD13	1:A:521:LEU:HD12	1.97	0.47
1:C:459:LEU:HD23	1:C:792:ILE:HG22	1.95	0.47
1:B:103:ILE:HG22	1:B:104:TRP:H	1.80	0.47
1:B:325:LEU:HD11	1:B:329:LEU:HD11	1.96	0.47
1:B:130:LEU:HB2	1:B:254:VAL:HG22	1.98	0.46
1:D:67:VAL:CG1	1:D:233:TRP:HA	2.45	0.46
1:B:234:GLU:OE1	1:B:277:ARG:HD2	2.16	0.46
1:C:518:LEU:HD13	1:C:521:LEU:HD12	1.97	0.46
1:B:69:VAL:HB	1:B:91:TRP:HB2	1.98	0.46
1:B:98:LEU:HB2	1:B:104:TRP:CZ3	2.51	0.45
1:A:871:ILE:HD12	1:A:874:ILE:HB	1.99	0.45
1:B:346:LEU:O	1:B:347:LEU:HB2	2.17	0.44
1:C:871:ILE:HD12	1:C:874:ILE:HB	1.99	0.44
1:D:346:LEU:O	1:D:347:LEU:HB2	2.17	0.44
1:D:231:GLN:C	1:D:232:ASP:OD1	2.57	0.43
1:B:229:SER:O	1:B:233:TRP:HB2	2.18	0.43
1:B:204:SER:O	1:B:294:GLN:NE2	2.50	0.43
1:B:133:LEU:CD1	1:B:141:VAL:HG22	2.49	0.43
1:B:235:ALA:H	1:B:274:VAL:HG12	1.84	0.42
1:B:103:ILE:HG22	1:B:104:TRP:N	2.35	0.42
1:B:185:PRO:HG2	1:B:202:HIS:HD2	1.82	0.42
1:B:348:SER:O	1:B:351:PRO:HG2	2.19	0.42
1:B:334:VAL:HG22	1:D:334:VAL:HG22	2.01	0.42
1:B:353:GLN:CD	1:D:341:PRO:HB3	2.40	0.42
1:B:347:LEU:HA	1:B:350:VAL:HG23	2.02	0.41
1:B:353:GLN:NE2	1:B:357:LEU:HD22	2.36	0.41
1:D:187:VAL:HG21	1:D:244:ARG:NE	2.36	0.41
1:B:132:ASP:HB3	1:B:257:LYS:HG2	2.03	0.41

*Continued on next page...*

Continued from previous page...

Atom-1	Atom-2	Interatomic distance (Å)	Clash overlap (Å)
1:B:202:HIS:N	1:B:203:PRO:CD	2.83	0.41
1:B:97:ASN:OD1	1:B:108:HIS:NE2	2.37	0.41
1:B:350:VAL:N	1:B:351:PRO:HD2	2.36	0.41
1:A:845:ARG:CZ	1:B:151:PHE:O	2.69	0.41
1:B:204:SER:CA	1:B:294:GLN:HE22	2.30	0.41
1:D:347:LEU:HA	1:D:350:VAL:HG23	2.02	0.41
1:B:92:VAL:HG13	1:B:233:TRP:CZ3	2.55	0.40
1:D:129:VAL:HG13	1:D:253:PHE:HD2	1.86	0.40
1:C:845:ARG:CZ	1:D:151:PHE:O	2.69	0.40
1:B:111:TYR:H	1:B:297:ARG:HH22	1.70	0.40
1:B:129:VAL:HG13	1:B:253:PHE:HD2	1.86	0.40
1:B:111:TYR:OH	1:D:345:ALA:CB	2.68	0.40

There are no symmetry-related clashes.

## 5.3 Torsion angles [i](#)

### 5.3.1 Protein backbone [i](#)

In the following table, the Percentiles column shows the percent Ramachandran outliers of the chain as a percentile score with respect to all PDB entries followed by that with respect to all EM entries.

The Analysed column shows the number of residues for which the backbone conformation was analysed, and the total number of residues.

Mol	Chain	Analysed	Favoured	Allowed	Outliers	Percentiles	
1	A	445/930 (48%)	424 (95%)	21 (5%)	0	100	100
1	B	264/930 (28%)	248 (94%)	12 (4%)	4 (2%)	10	45
1	C	445/930 (48%)	425 (96%)	20 (4%)	0	100	100
1	D	264/930 (28%)	253 (96%)	8 (3%)	3 (1%)	14	52
All	All	1418/3720 (38%)	1350 (95%)	61 (4%)	7 (0%)	32	69

All (7) Ramachandran outliers are listed below:

Mol	Chain	Res	Type
1	B	100	LYS
1	B	262	PRO
1	D	232	ASP

Continued on next page...

*Continued from previous page...*

Mol	Chain	Res	Type
1	D	262	PRO
1	B	204	SER
1	B	234	GLU
1	D	233	TRP

### 5.3.2 Protein sidechains [i](#)

In the following table, the Percentiles column shows the percent sidechain outliers of the chain as a percentile score with respect to all PDB entries followed by that with respect to all EM entries.

The Analysed column shows the number of residues for which the sidechain conformation was analysed, and the total number of residues.

Mol	Chain	Analysed	Rotameric	Outliers	Percentiles	
1	A	399/818 (49%)	374 (94%)	25 (6%)	18	43
1	B	240/818 (29%)	232 (97%)	8 (3%)	38	61
1	C	399/818 (49%)	374 (94%)	25 (6%)	18	43
1	D	240/818 (29%)	227 (95%)	13 (5%)	22	47
All	All	1278/3272 (39%)	1207 (94%)	71 (6%)	25	46

All (71) residues with a non-rotameric sidechain are listed below:

Mol	Chain	Res	Type
1	A	429	PHE
1	A	435	LEU
1	A	436	THR
1	A	440	THR
1	A	457	GLU
1	A	518	LEU
1	A	537	TYR
1	A	545	LEU
1	A	578	THR
1	A	580	LYS
1	A	585	LEU
1	A	591	LEU
1	A	635	MET
1	A	671	LEU
1	A	681	MET
1	A	745	THR
1	A	779	ILE

*Continued on next page...*

*Continued from previous page...*

<b>Mol</b>	<b>Chain</b>	<b>Res</b>	<b>Type</b>
1	A	784	VAL
1	A	818	LEU
1	A	823	LEU
1	A	840	VAL
1	A	851	MET
1	A	862	LEU
1	A	869	ARG
1	A	889	ARG
1	C	429	PHE
1	C	435	LEU
1	C	436	THR
1	C	440	THR
1	C	457	GLU
1	C	518	LEU
1	C	537	TYR
1	C	545	LEU
1	C	578	THR
1	C	580	LYS
1	C	585	LEU
1	C	591	LEU
1	C	635	MET
1	C	671	LEU
1	C	681	MET
1	C	745	THR
1	C	779	ILE
1	C	784	VAL
1	C	818	LEU
1	C	823	LEU
1	C	840	VAL
1	C	851	MET
1	C	862	LEU
1	C	869	ARG
1	C	889	ARG
1	B	67	VAL
1	B	124	PHE
1	B	131	LEU
1	B	158	ASP
1	B	242	CYS
1	B	279	LEU
1	B	329	LEU
1	B	333	LEU
1	D	67	VAL

*Continued on next page...*

*Continued from previous page...*

Mol	Chain	Res	Type
1	D	124	PHE
1	D	158	ASP
1	D	202	HIS
1	D	204	SER
1	D	206	GLU
1	D	207	THR
1	D	242	CYS
1	D	244	ARG
1	D	277	ARG
1	D	279	LEU
1	D	305	GLU
1	D	333	LEU

Sometimes sidechains can be flipped to improve hydrogen bonding and reduce clashes. All (4) such sidechains are listed below:

Mol	Chain	Res	Type
1	B	121	GLN
1	B	202	HIS
1	B	291	ASN
1	B	294	GLN

### 5.3.3 RNA [i](#)

There are no RNA molecules in this entry.

### 5.4 Non-standard residues in protein, DNA, RNA chains [i](#)

There are no non-standard protein/DNA/RNA residues in this entry.

### 5.5 Carbohydrates [i](#)

There are no monosaccharides in this entry.

### 5.6 Ligand geometry [i](#)

There are no ligands in this entry.

## 5.7 Other polymers

There are no such residues in this entry.

## 5.8 Polymer linkage issues

There are no chain breaks in this entry.



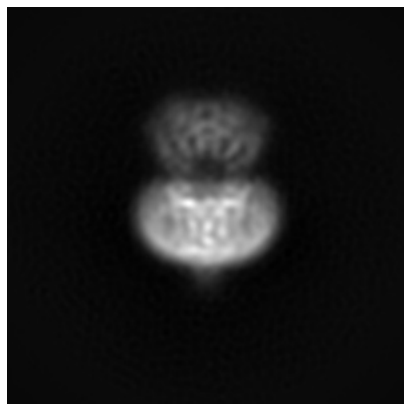
## 6 Map visualisation [i](#)

This section contains visualisations of the EMDB entry EMD-28055. These allow visual inspection of the internal detail of the map and identification of artifacts.

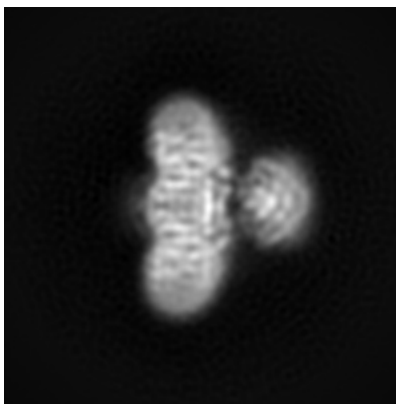
Images derived from a raw map, generated by summing the deposited half-maps, are presented below the corresponding image components of the primary map to allow further visual inspection and comparison with those of the primary map.

### 6.1 Orthogonal projections [i](#)

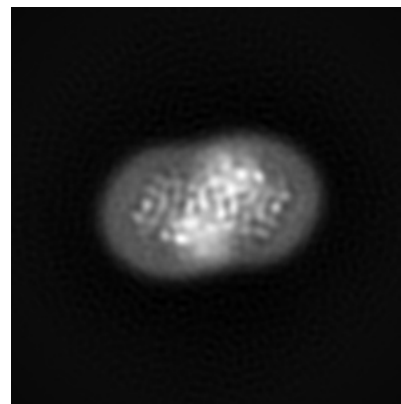
#### 6.1.1 Primary map



X

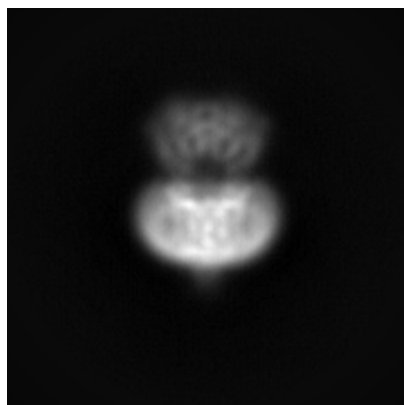


Y

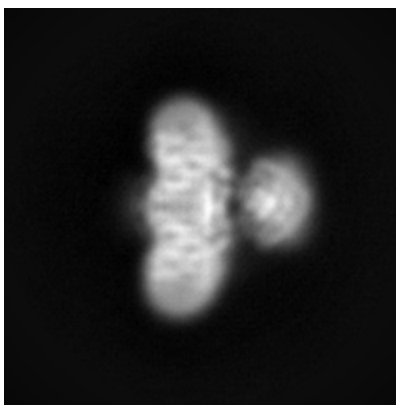


Z

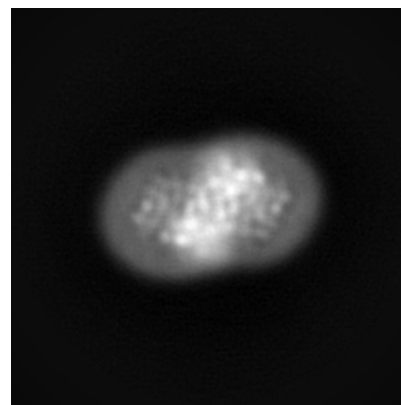
#### 6.1.2 Raw map



X



Y

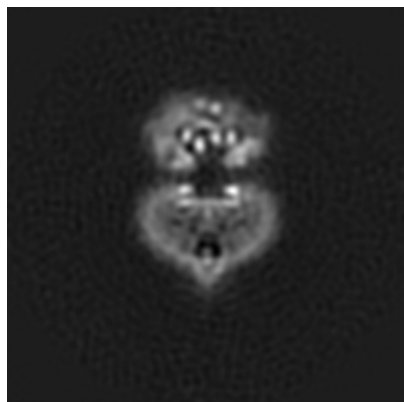


Z

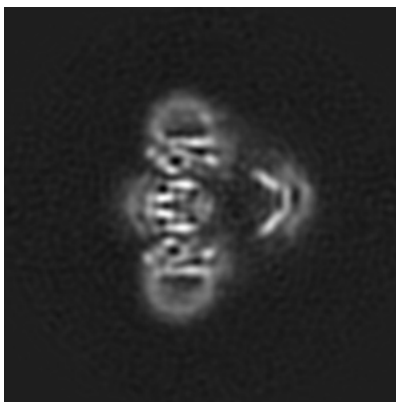
The images above show the map projected in three orthogonal directions.

## 6.2 Central slices [i](#)

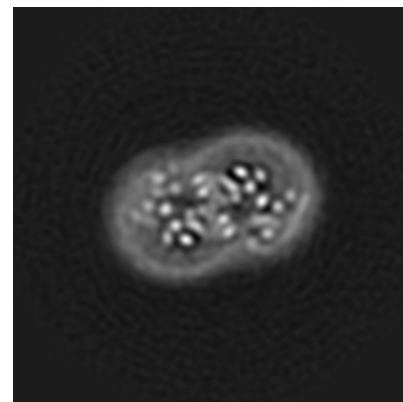
### 6.2.1 Primary map



X Index: 96

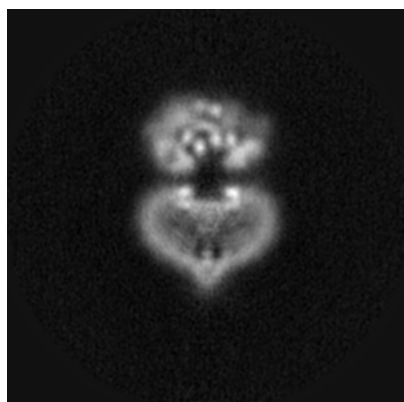


Y Index: 96

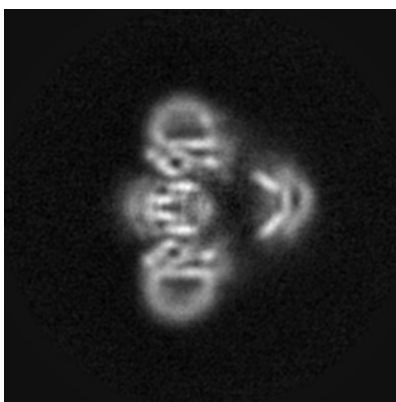


Z Index: 96

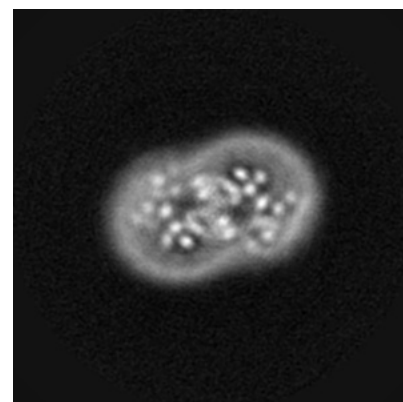
### 6.2.2 Raw map



X Index: 96



Y Index: 96

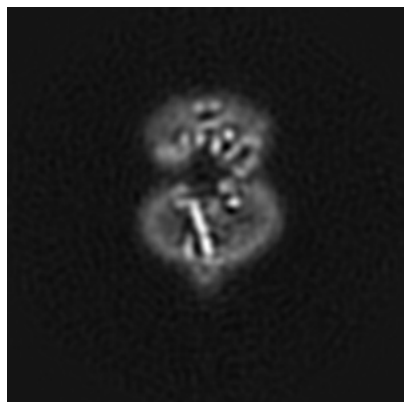


Z Index: 96

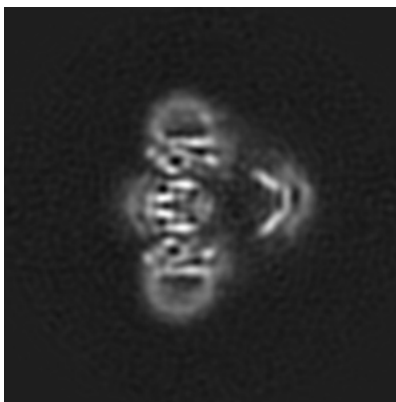
The images above show central slices of the map in three orthogonal directions.

## 6.3 Largest variance slices [i](#)

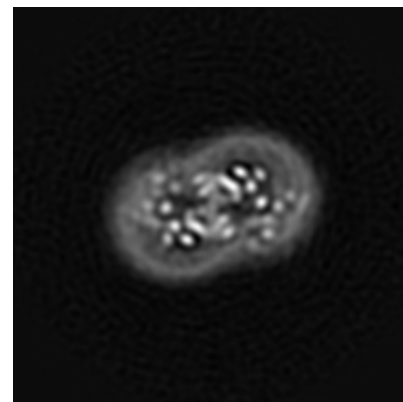
### 6.3.1 Primary map



X Index: 100

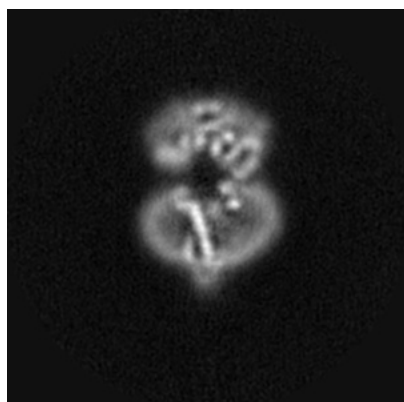


Y Index: 96

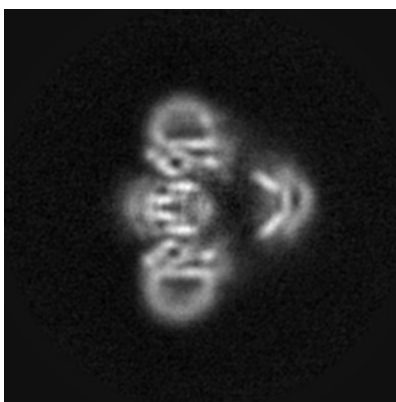


Z Index: 97

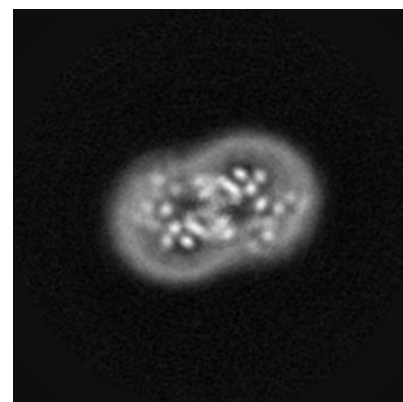
### 6.3.2 Raw map



X Index: 100



Y Index: 96

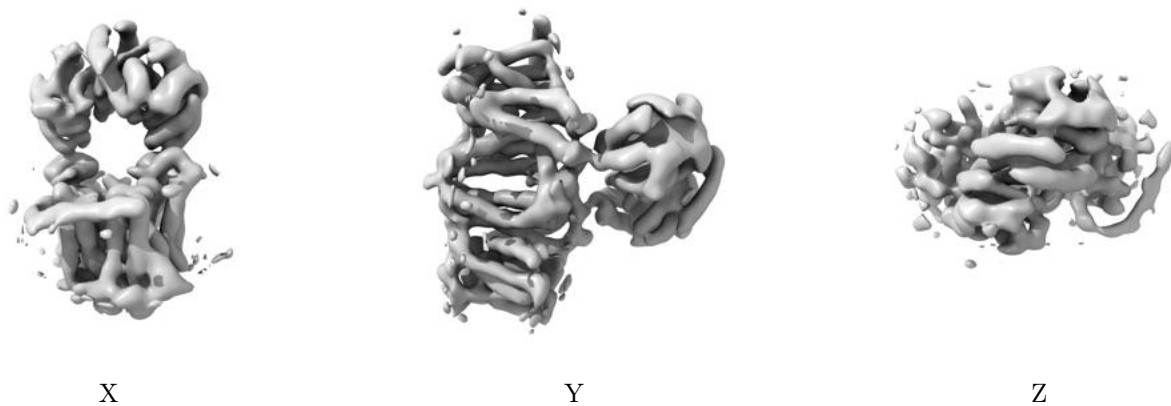


Z Index: 97

The images above show the largest variance slices of the map in three orthogonal directions.

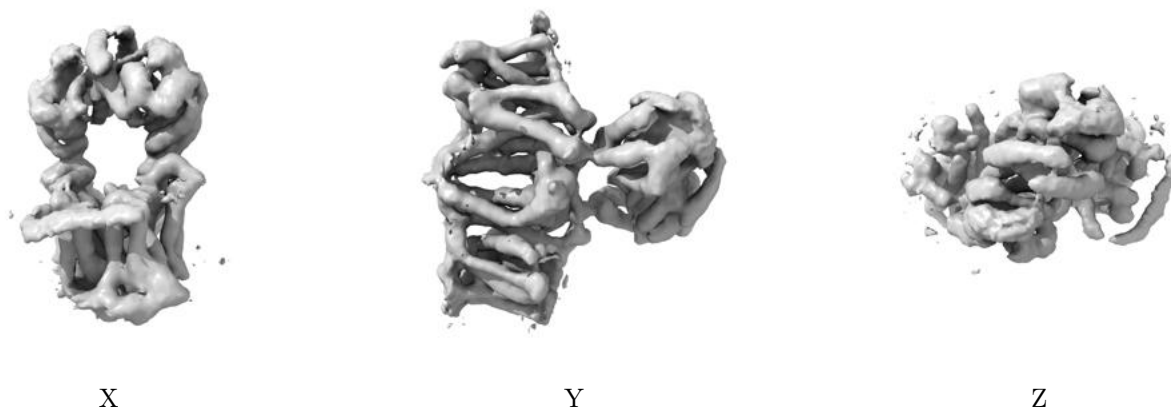
## 6.4 Orthogonal surface views [i](#)

### 6.4.1 Primary map



The images above show the 3D surface view of the map at the recommended contour level 0.0496. These images, in conjunction with the slice images, may facilitate assessment of whether an appropriate contour level has been provided.

### 6.4.2 Raw map



These images show the 3D surface of the raw map. The raw map's contour level was selected so that its surface encloses the same volume as the primary map does at its recommended contour level.

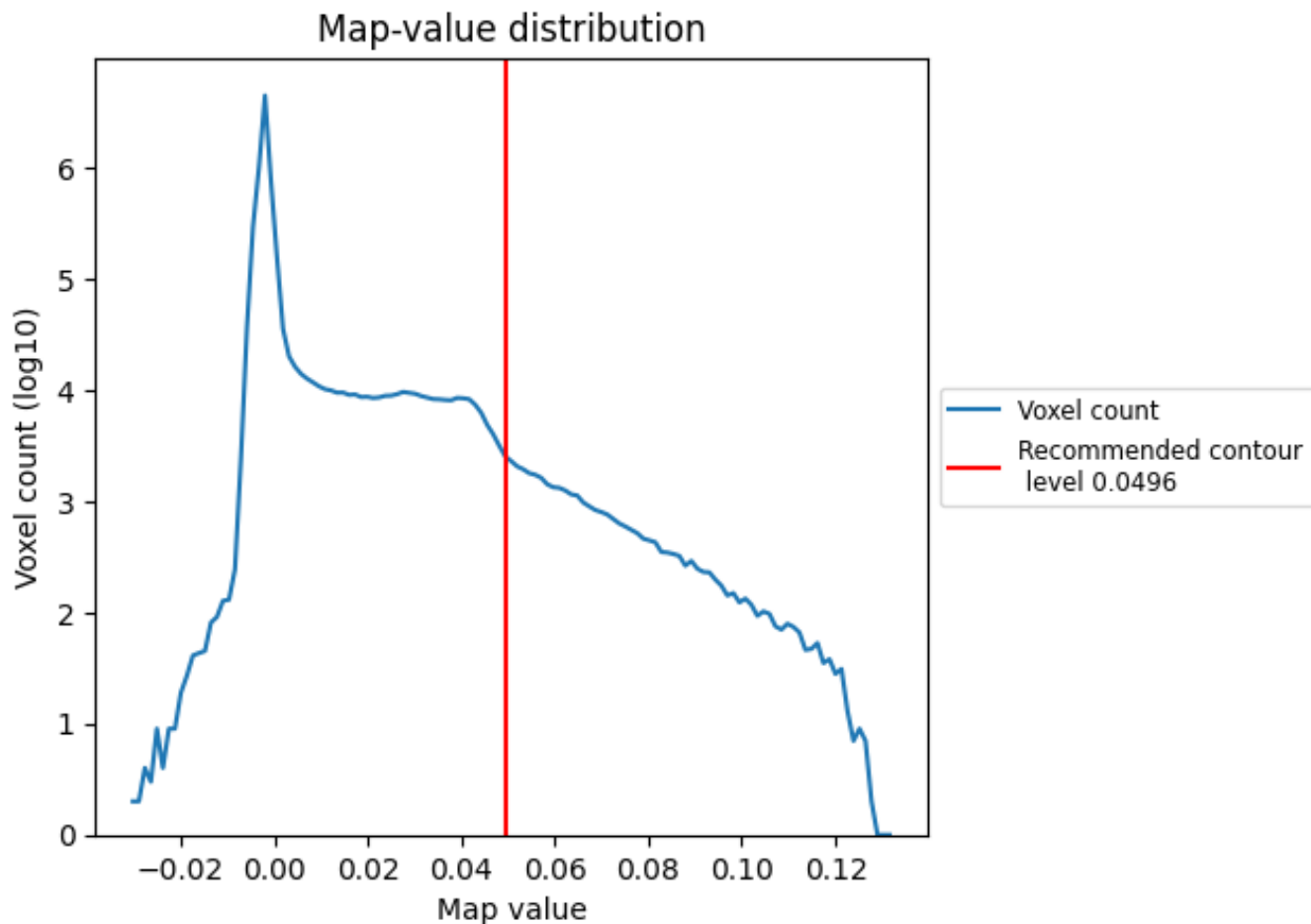
## 6.5 Mask visualisation [i](#)

This section was not generated. No masks/segmentation were deposited.

## 7 Map analysis [i](#)

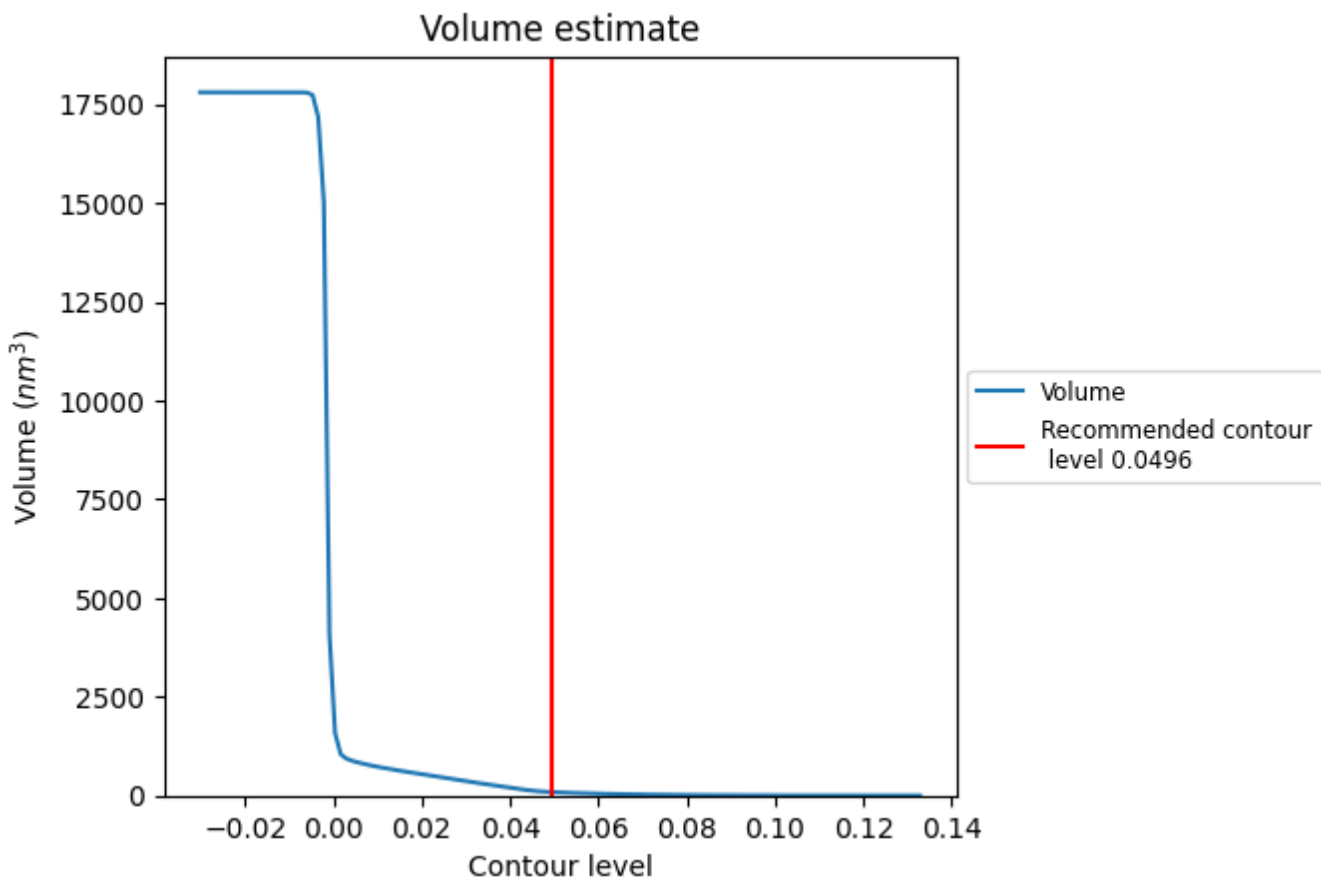
This section contains the results of statistical analysis of the map.

### 7.1 Map-value distribution [i](#)



The map-value distribution is plotted in 128 intervals along the x-axis. The y-axis is logarithmic. A spike in this graph at zero usually indicates that the volume has been masked.

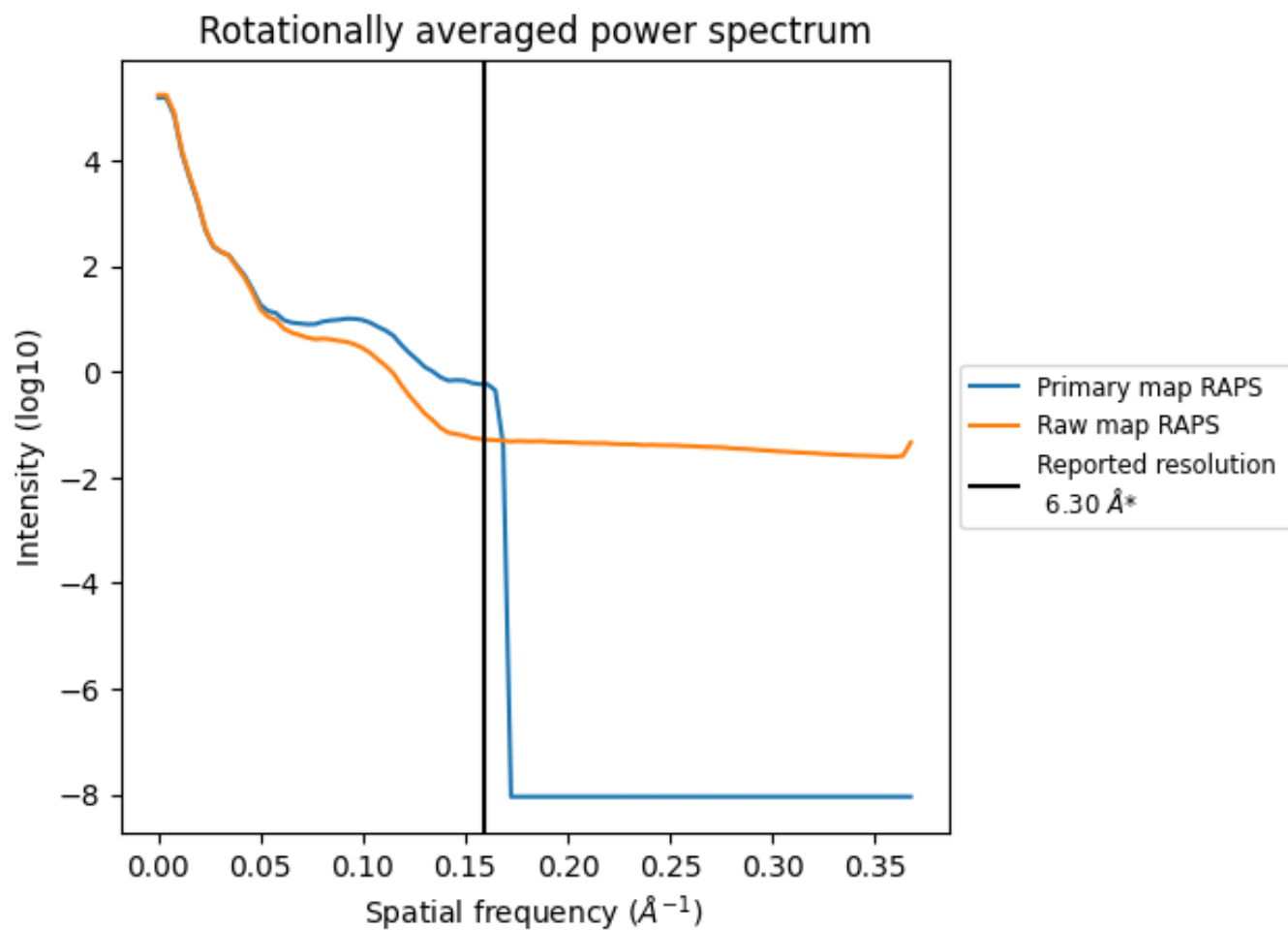
## 7.2 Volume estimate [i](#)



The volume at the recommended contour level is 86 nm<sup>3</sup>; this corresponds to an approximate mass of 78 kDa.

The volume estimate graph shows how the enclosed volume varies with the contour level. The recommended contour level is shown as a vertical line and the intersection between the line and the curve gives the volume of the enclosed surface at the given level.

### 7.3 Rotationally averaged power spectrum [i](#)

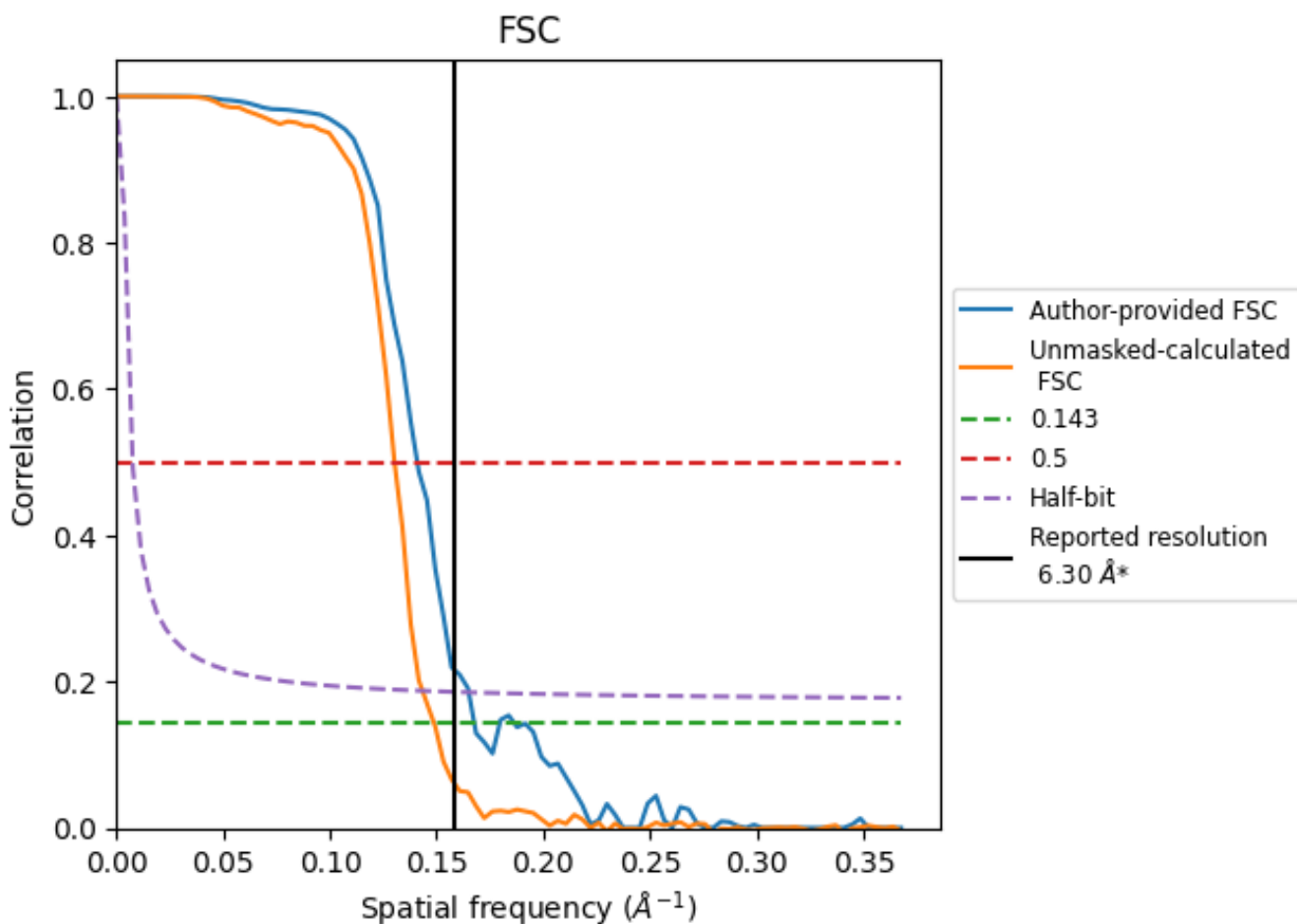


\*Reported resolution corresponds to spatial frequency of 0.159 Å<sup>-1</sup>

## 8 Fourier-Shell correlation [i](#)

Fourier-Shell Correlation (FSC) is the most commonly used method to estimate the resolution of single-particle and subtomogram-averaged maps. The shape of the curve depends on the imposed symmetry, mask and whether or not the two 3D reconstructions used were processed from a common reference. The reported resolution is shown as a black line. A curve is displayed for the half-bit criterion in addition to lines showing the 0.143 gold standard cut-off and 0.5 cut-off.

### 8.1 FSC [i](#)



\*Reported resolution corresponds to spatial frequency of 0.159 Å<sup>-1</sup>



## 8.2 Resolution estimates [i](#)

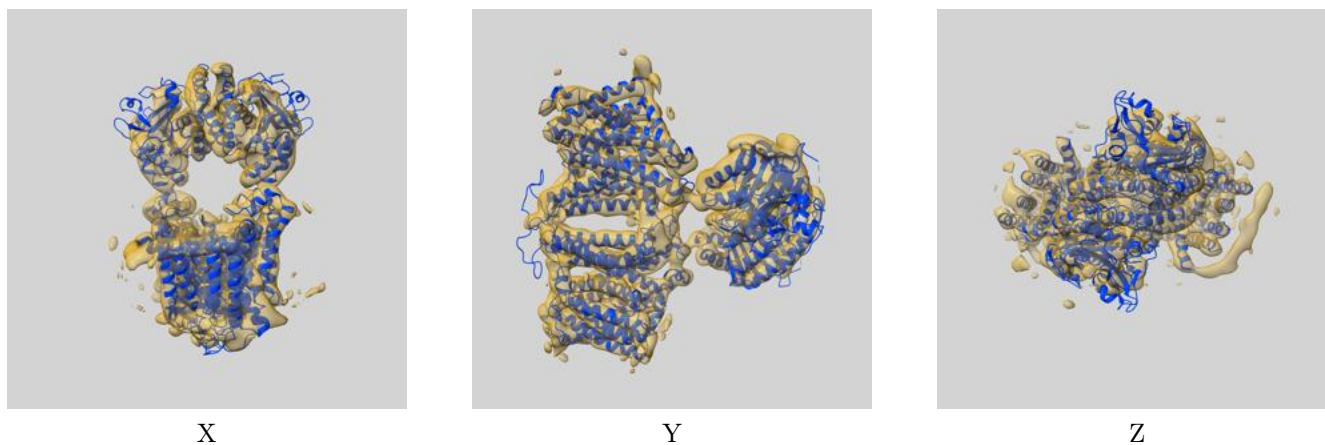
Resolution estimate (Å)	Estimation criterion (FSC cut-off)		
	0.143	0.5	Half-bit
Reported by author	6.30	-	-
Author-provided FSC curve	5.97	7.10	6.06
Unmasked-calculated*	6.72	7.67	6.97

\*Resolution estimate based on FSC curve calculated by comparison of deposited half-maps.

## 9 Map-model fit [i](#)

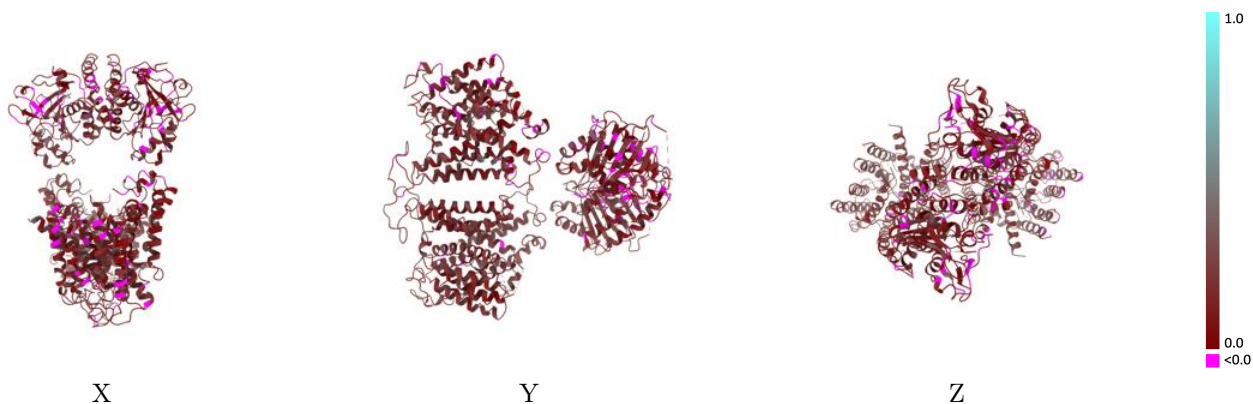
This section contains information regarding the fit between EMDB map EMD-28055 and PDB model 8EEQ. Per-residue inclusion information can be found in section 3 on page 4.

### 9.1 Map-model overlay [i](#)



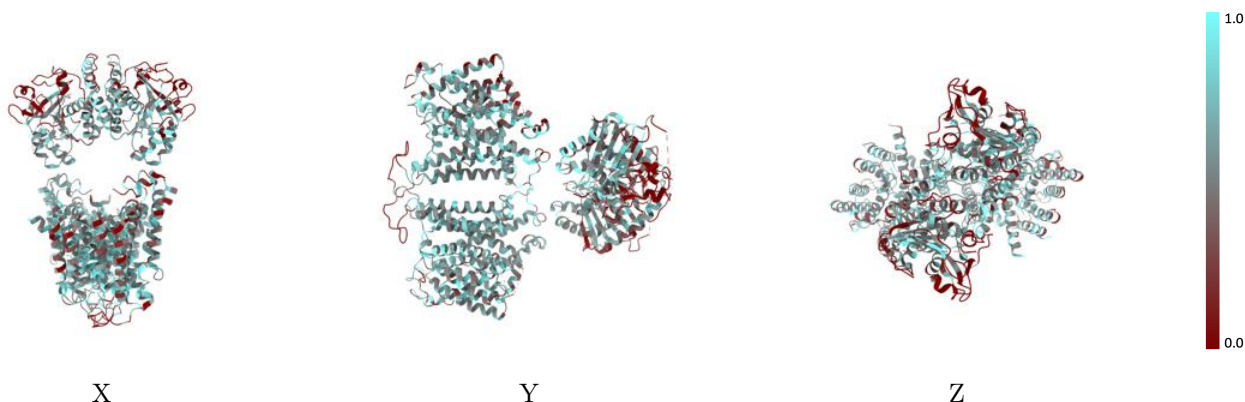
The images above show the 3D surface view of the map at the recommended contour level 0.0496 at 50% transparency in yellow overlaid with a ribbon representation of the model coloured in blue. These images allow for the visual assessment of the quality of fit between the atomic model and the map.

## 9.2 Q-score mapped to coordinate model [i](#)



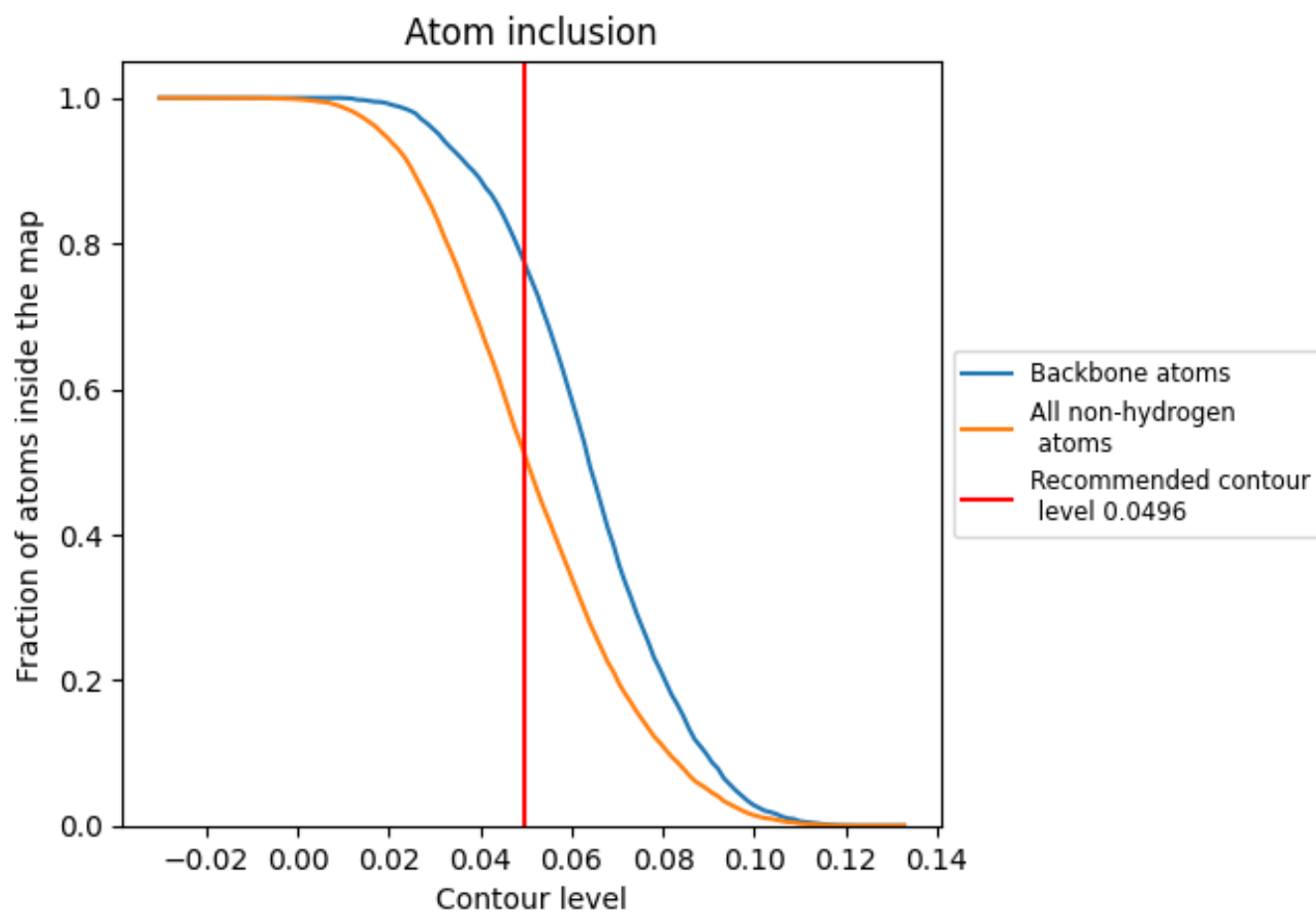
The images above show the model with each residue coloured according to its Q-score. This shows their resolvability in the map with higher Q-score values reflecting better resolvability. Please note: Q-score is calculating the resolvability of atoms, and thus high values are only expected at resolutions at which atoms can be resolved. Low Q-score values may therefore be expected for many entries.

## 9.3 Atom inclusion mapped to coordinate model [i](#)



The images above show the model with each residue coloured according to its atom inclusion. This shows to what extent they are inside the map at the recommended contour level (0.0496).











## 9.4 Atom inclusion [i](#)



At the recommended contour level, 78% of all backbone atoms, 51% of all non-hydrogen atoms, are inside the map.

## 9.5 Map-model fit summary [i](#)

The table lists the average atom inclusion at the recommended contour level (0.0496) and Q-score for the entire model and for each chain.

Chain	Atom inclusion	Q-score
All	 0.5126	 0.1540
A	 0.5554	 0.1580
B	 0.4325	 0.1270
C	 0.5855	 0.1810
D	 0.4006	 0.1320

