



# Full wwPDB X-ray Structure Validation Report ⓘ

Mar 9, 2018 – 05:20 pm GMT

PDB ID : 5EF8  
Title : Crystal structure of Danio rerio histone deacetylase 6 catalytic domain 2 in complex with panobinostat  
Authors : Hai, Y.; Christianson, D.W.  
Deposited on : 2015-10-23  
Resolution : 2.60 Å(reported)

This is a Full wwPDB X-ray Structure Validation Report for a publicly released PDB entry.

We welcome your comments at [validation@mail.wwpdb.org](mailto:validation@mail.wwpdb.org)

A user guide is available at

<https://www.wwpdb.org/validation/2017/XrayValidationReportHelp>

with specific help available everywhere you see the ⓘ symbol.

---

The following versions of software and data (see [references ⓘ](#)) were used in the production of this report:

MolProbity : 4.02b-467  
Mogul : 1.7.3 (157068), CSD as539be (2018)  
Xtriage (Phenix) : 1.13  
EDS : trunk30967  
Percentile statistics : 20171227.v01 (using entries in the PDB archive December 27th 2017)  
Refmac : 5.8.0158  
CCP4 : 7.0 (Gargrove)  
Ideal geometry (proteins) : Engh & Huber (2001)  
Ideal geometry (DNA, RNA) : Parkinson et al. (1996)  
Validation Pipeline (wwPDB-VP) : trunk30967

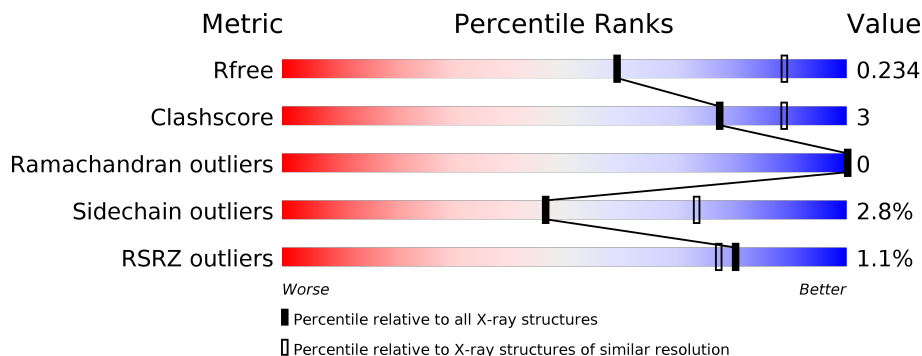
# 1 Overall quality at a glance

The following experimental techniques were used to determine the structure:

*X-RAY DIFFRACTION*



The reported resolution of this entry is 2.60 Å.

Percentile scores (ranging between 0-100) for global validation metrics of the entry are shown in the following graphic. The table shows the number of entries on which the scores are based.



Metric	Whole archive (#Entries)	Similar resolution (#Entries, resolution range(Å))
$R_{free}$	111664	2767 (2.60-2.60)
Clashscore	122126	3110 (2.60-2.60)
Ramachandran outliers	120053	3062 (2.60-2.60)
Sidechain outliers	120020	3062 (2.60-2.60)
RSRZ outliers	108989	2706 (2.60-2.60)

The table below summarises the geometric issues observed across the polymeric chains and their fit to the electron density. The red, orange, yellow and green segments on the lower bar indicate the fraction of residues that contain outliers for  $\geq 3$ , 2, 1 and 0 types of geometric quality criteria. A grey segment represents the fraction of residues that are not modelled. The numeric value for each fraction is indicated below the corresponding segment, with a dot representing fractions  $\leq 5\%$ . The upper red bar (where present) indicates the fraction of residues that have poor fit to the electron density. The numeric value is given above the bar.

Mol	Chain	Length	Quality of chain
1	A	364	 % 88% 10% ••
1	B	364	 % 90% 7% •

## 2 Entry composition [i](#)

There are 7 unique types of molecules in this entry. The entry contains 5879 atoms, of which 0 are hydrogens and 0 are deuteriums.

In the tables below, the ZeroOcc column contains the number of atoms modelled with zero occupancy, the AltConf column contains the number of residues with at least one atom in alternate conformation and the Trace column contains the number of residues modelled with at most 2 atoms.

- Molecule 1 is a protein called Hdac6 protein.

Mol	Chain	Residues	Atoms					ZeroOcc	AltConf	Trace
			Total	C	N	O	S			
1	A	357	2803	1765	498	521	19	0	6	0
1	B	357	2791	1756	498	519	18	0	2	0

There are 10 discrepancies between the modelled and reference sequences:

Chain	Residue	Modelled	Actual	Comment	Reference
A	435	SER	-	expression tag	UNP A7YT55
A	436	ASN	-	expression tag	UNP A7YT55
A	437	ALA	-	expression tag	UNP A7YT55
A	438	GLY	-	expression tag	UNP A7YT55
A	439	GLY	-	expression tag	UNP A7YT55
B	435	SER	-	expression tag	UNP A7YT55
B	436	ASN	-	expression tag	UNP A7YT55
B	437	ALA	-	expression tag	UNP A7YT55
B	438	GLY	-	expression tag	UNP A7YT55
B	439	GLY	-	expression tag	UNP A7YT55

- Molecule 2 is ZINC ION (three-letter code: ZN) (formula: Zn).

Mol	Chain	Residues	Atoms		ZeroOcc	AltConf
2	B	1	Total	Zn	0	0
			1	1		
2	A	1	Total	Zn	0	0
			1	1		

- Molecule 3 is POTASSIUM ION (three-letter code: K) (formula: K).

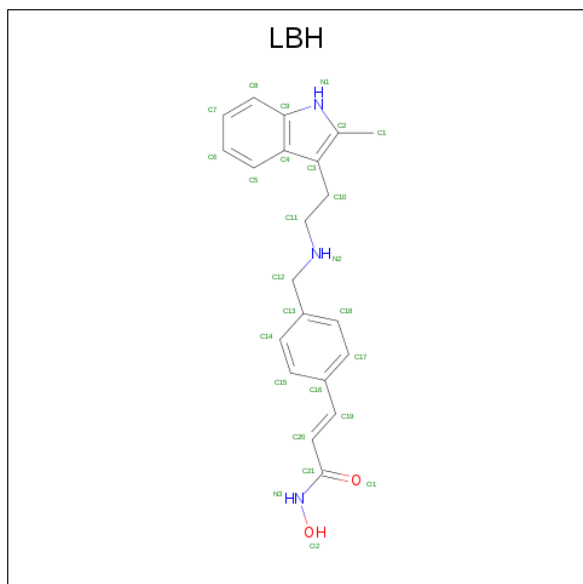
Mol	Chain	Residues	Atoms		ZeroOcc	AltConf
3	B	2	Total	K	0	0
			2	2		

*Continued on next page...*

Continued from previous page...

Mol	Chain	Residues	Atoms	ZeroOcc	AltConf
3	A	2	Total K 2 2	0	0

- Molecule 4 is Panobinostat (three-letter code: LBH) (formula:  $C_{21}H_{23}N_3O_2$ ).



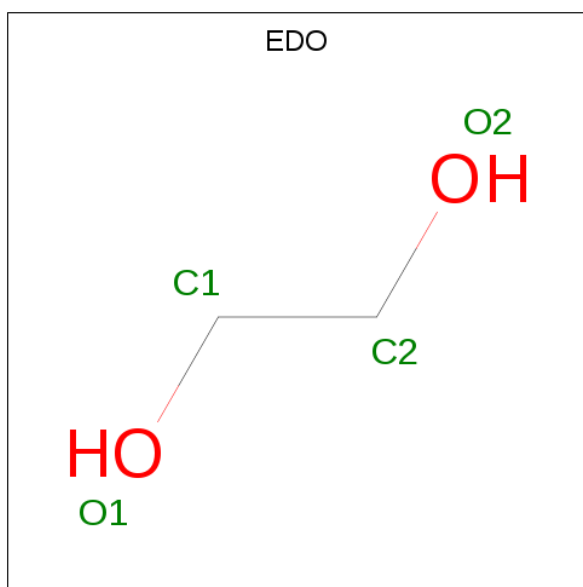
Mol	Chain	Residues	Atoms	ZeroOcc	AltConf
4	A	1	Total C N O 26 21 3 2	0	0
4	B	1	Total C N O 26 21 3 2	0	0

- Molecule 5 is GLYCEROL (three-letter code: GOL) (formula:  $C_3H_8O_3$ ).



Mol	Chain	Residues	Atoms			ZeroOcc	AltConf
5	A	1	Total	C	O	0	0
			6	3	3		
5	B	1	Total	C	O	0	0
			6	3	3		
5	B	1	Total	C	O	0	0
			6	3	3		

- Molecule 6 is 1,2-ETHANEDIOL (three-letter code: EDO) (formula:  $C_2H_6O_2$ ).



Mol	Chain	Residues	Atoms			ZeroOcc	AltConf
6	B	1	Total	C	O	0	0
			4	2	2		

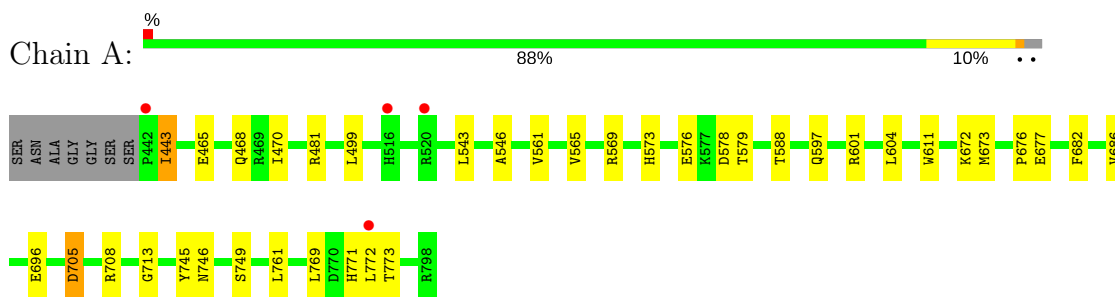
- Molecule 7 is water.

Mol	Chain	Residues	Atoms	ZeroOcc	AltConf
7	A	89	Total O 89 89	0	0
7	B	116	Total O 116 116	0	0

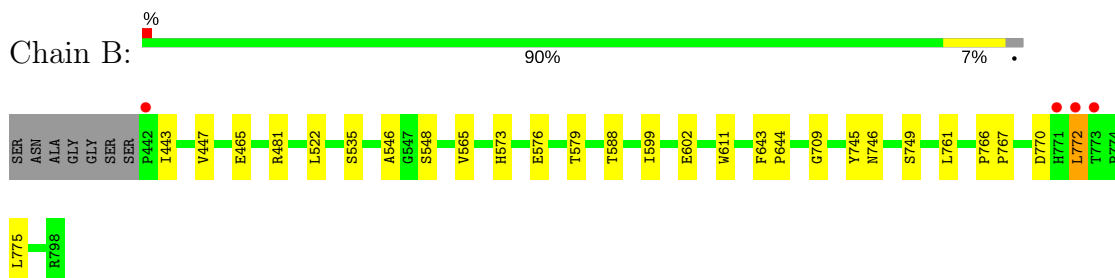
### 3 Residue-property plots [i](#)

These plots are drawn for all protein, RNA and DNA chains in the entry. The first graphic for a chain summarises the proportions of the various outlier classes displayed in the second graphic. The second graphic shows the sequence view annotated by issues in geometry and electron density. Residues are color-coded according to the number of geometric quality criteria for which they contain at least one outlier: green = 0, yellow = 1, orange = 2 and red = 3 or more. A red dot above a residue indicates a poor fit to the electron density ( $RSRZ > 2$ ). Stretches of 2 or more consecutive residues without any outlier are shown as a green connector. Residues present in the sample, but not in the model, are shown in grey.

- Molecule 1: Hdac6 protein



- Molecule 1: Hdac6 protein



## 4 Data and refinement statistics

Property	Value	Source
Space group	P 21 21 2	Depositor
Cell constants a, b, c, $\alpha$ , $\beta$ , $\gamma$	65.17Å 140.40Å 91.86Å 90.00° 90.00° 90.00°	Depositor
Resolution (Å)	49.71 – 2.60 49.71 – 2.59	Depositor EDS
% Data completeness (in resolution range)	98.7 (49.71-2.60) 98.8 (49.71-2.59)	Depositor EDS
$R_{merge}$	0.22	Depositor
$R_{sym}$	(Not available)	Depositor
$\langle I/\sigma(I) \rangle$ <sup>1</sup>	1.41 (at 2.58Å)	Xtrriage
Refinement program	PHENIX 1.8.3_1479	Depositor
R, $R_{free}$	0.189 , 0.234 0.192 , 0.234	Depositor DCC
$R_{free}$ test set	1325 reflections (5.00%)	wwPDB-VP
Wilson B-factor (Å <sup>2</sup> )	24.8	Xtrriage
Anisotropy	0.638	Xtrriage
Bulk solvent $k_{sol}$ (e/Å <sup>3</sup> ), $B_{sol}$ (Å <sup>2</sup> )	0.33 , 29.5	EDS
L-test for twinning <sup>2</sup>	$\langle  L  \rangle = 0.49$ , $\langle L^2 \rangle = 0.33$	Xtrriage
Estimated twinning fraction	No twinning to report.	Xtrriage
$F_o, F_c$ correlation	0.94	EDS
Total number of atoms	5879	wwPDB-VP
Average B, all atoms (Å <sup>2</sup> )	26.0	wwPDB-VP

Xtrriage's analysis on translational NCS is as follows: *The analyses of the Patterson function reveals a significant off-origin peak that is 36.98 % of the origin peak, indicating pseudo-translational symmetry. The chance of finding a peak of this or larger height randomly in a structure without pseudo-translational symmetry is equal to 4.5979e-04. The detected translational NCS is most likely also responsible for the elevated intensity ratio.*

<sup>1</sup>Intensities estimated from amplitudes.

<sup>2</sup>Theoretical values of  $\langle |L| \rangle$ ,  $\langle L^2 \rangle$  for acentric reflections are 0.5, 0.333 respectively for untwinned datasets, and 0.375, 0.2 for perfectly twinned datasets.



## 5 Model quality [i](#)

### 5.1 Standard geometry [i](#)

Bond lengths and bond angles in the following residue types are not validated in this section: LBH, GOL, ZN, K, EDO

The Z score for a bond length (or angle) is the number of standard deviations the observed value is removed from the expected value. A bond length (or angle) with  $|Z| > 5$  is considered an outlier worth inspection. RMSZ is the root-mean-square of all Z scores of the bond lengths (or angles).

Mol	Chain	Bond lengths		Bond angles	
		RMSZ	# Z  >5	RMSZ	# Z  >5
1	A	0.21	0/2893	0.40	0/3925
1	B	0.22	0/2868	0.39	0/3890
All	All	0.21	0/5761	0.39	0/7815

There are no bond length outliers.

There are no bond angle outliers.

There are no chirality outliers.

There are no planarity outliers.

### 5.2 Too-close contacts [i](#)

In the following table, the Non-H and H(model) columns list the number of non-hydrogen atoms and hydrogen atoms in the chain respectively. The H(added) column lists the number of hydrogen atoms added and optimized by MolProbity. The Clashes column lists the number of clashes within the asymmetric unit, whereas Symm-Clashes lists symmetry related clashes.

Mol	Chain	Non-H	H(model)	H(added)	Clashes	Symm-Clashes
1	A	2803	0	2729	23	0
1	B	2791	0	2709	14	0
2	A	1	0	0	0	0
2	B	1	0	0	0	0
3	A	2	0	0	0	0
3	B	2	0	0	0	0
4	A	26	0	0	1	0
4	B	26	0	0	2	0
5	A	6	0	8	1	0
5	B	12	0	16	1	0
6	B	4	0	6	0	0

*Continued on next page...*

*Continued from previous page...*

Mol	Chain	Non-H	H(model)	H(added)	Clashes	Symm-Clashes
7	A	89	0	0	0	0
7	B	116	0	0	0	0
All	All	5879	0	5468	36	0

The all-atom clashscore is defined as the number of clashes found per 1000 atoms (including hydrogen atoms). The all-atom clashscore for this structure is 3.

All (36) close contacts within the same asymmetric unit are listed below, sorted by their clash magnitude.

Atom-1	Atom-2	Interatomic distance (Å)	Clash overlap (Å)
1:A:745:TYR:OH	4:A:2004:LBH:O1	2.17	0.62
1:A:708:ARG:HH11	5:A:2005:GOL:H2	1.65	0.61
1:B:745:TYR:OH	4:B:2004:LBH:O1	2.13	0.57
1:A:499:LEU:HD11	1:A:543:LEU:HD21	1.88	0.56
1:A:546:ALA:HA	1:A:588:THR:HG23	1.87	0.56
1:A:672:LYS:HD2	1:B:602:GLU:HB2	1.89	0.54
1:A:682:PHE:HA	1:A:686:VAL:HB	1.91	0.53
1:A:601:ARG:NH1	1:A:696:GLU:OE1	2.42	0.52
1:A:443:ILE:H	1:A:443:ILE:HD13	1.75	0.50
1:A:576:GLU:HB2	1:A:579:THR:HG22	1.96	0.47
1:B:447:VAL:HG21	1:B:548:SER:HB3	1.97	0.47
1:A:676:PRO:HA	1:A:772:LEU:HD23	1.98	0.46
1:A:470:ILE:HD13	1:A:569:ARG:HG2	1.98	0.46
1:B:576:GLU:HB2	1:B:579:THR:HG22	1.99	0.45
1:A:746:ASN:HB3	1:A:749[A]:SER:HB2	1.99	0.45
1:A:746:ASN:HB3	1:A:749[B]:SER:HB2	1.99	0.44
1:B:772:LEU:HD12	1:B:772:LEU:H	1.82	0.44
1:A:597:GLN:HG2	1:A:604:LEU:HB3	2.00	0.44
1:B:746:ASN:HB3	1:B:749[A]:SER:HB2	1.99	0.44
1:A:705:ASP:O	1:A:713:GLY:HA3	2.18	0.44
1:A:673:MET:SD	1:A:677:GLU:HG2	2.57	0.43
1:B:522:LEU:HD13	1:B:535:SER:HA	2.00	0.43
1:A:676:PRO:HG3	1:A:771:HIS:O	2.19	0.42
1:A:705:ASP:OD1	1:A:705:ASP:N	2.42	0.42
1:A:565[B]:VAL:HG13	1:A:761:LEU:HD12	2.01	0.42
1:B:546:ALA:HA	1:B:588:THR:HG23	2.02	0.42
1:A:708:ARG:HD3	1:B:599:ILE:HA	2.01	0.42
1:A:565[A]:VAL:HG13	1:A:761:LEU:HD12	2.01	0.41
1:B:643:PHE:CD2	1:B:644:PRO:HA	2.56	0.41
1:B:643:PHE:CG	1:B:644:PRO:HA	2.56	0.41
1:B:565:VAL:HG13	1:B:761:LEU:HD12	2.03	0.41

*Continued on next page...*

Continued from previous page...

Atom-1	Atom-2	Interatomic distance (Å)	Clash overlap (Å)
4:B:2004:LBH:C12	5:B:2006:GOL:H31	2.51	0.40
1:B:709:GLY:O	1:B:746:ASN:ND2	2.41	0.40
1:A:769:LEU:HD23	1:A:769:LEU:HA	1.74	0.40
1:B:766:PRO:HA	1:B:767:PRO:HD3	1.89	0.40
1:A:443:ILE:HG12	1:A:561:VAL:HA	2.02	0.40

There are no symmetry-related clashes.

### 5.3 Torsion angles [i](#)

#### 5.3.1 Protein backbone [i](#)

In the following table, the Percentiles column shows the percent Ramachandran outliers of the chain as a percentile score with respect to all X-ray entries followed by that with respect to entries of similar resolution.

The Analysed column shows the number of residues for which the backbone conformation was analysed, and the total number of residues.

Mol	Chain	Analysed	Favoured	Allowed	Outliers	Percentiles	
1	A	361/364 (99%)	347 (96%)	14 (4%)	0	100	100
1	B	357/364 (98%)	341 (96%)	16 (4%)	0	100	100
All	All	718/728 (99%)	688 (96%)	30 (4%)	0	100	100

There are no Ramachandran outliers to report.

#### 5.3.2 Protein sidechains [i](#)

In the following table, the Percentiles column shows the percent sidechain outliers of the chain as a percentile score with respect to all X-ray entries followed by that with respect to entries of similar resolution.

The Analysed column shows the number of residues for which the sidechain conformation was analysed, and the total number of residues.

Mol	Chain	Analysed	Rotameric	Outliers	Percentiles	
1	A	306/305 (100%)	297 (97%)	9 (3%)	45	72
1	B	302/305 (99%)	294 (97%)	8 (3%)	49	75
All	All	608/610 (100%)	591 (97%)	17 (3%)	47	73

All (17) residues with a non-rotameric sidechain are listed below:

Mol	Chain	Res	Type
1	A	443	ILE
1	A	465	GLU
1	A	468	GLN
1	A	481	ARG
1	A	573	HIS
1	A	578	ASP
1	A	611	TRP
1	A	705	ASP
1	A	773	THR
1	B	443	ILE
1	B	465	GLU
1	B	481	ARG
1	B	573	HIS
1	B	611	TRP
1	B	770	ASP
1	B	772	LEU
1	B	775	LEU

Some sidechains can be flipped to improve hydrogen bonding and reduce clashes. All (1) such sidechains are listed below:

Mol	Chain	Res	Type
1	B	727	HIS

### 5.3.3 RNA [i](#)

There are no RNA molecules in this entry.

### 5.4 Non-standard residues in protein, DNA, RNA chains [i](#)

There are no non-standard protein/DNA/RNA residues in this entry.

### 5.5 Carbohydrates [i](#)

There are no carbohydrates in this entry.

### 5.6 Ligand geometry [i](#)

Of 12 ligands modelled in this entry, 6 are monoatomic - leaving 6 for Mogul analysis.

In the following table, the Counts columns list the number of bonds (or angles) for which Mogul statistics could be retrieved, the number of bonds (or angles) that are observed in the model and the number of bonds (or angles) that are defined in the Chemical Component Dictionary. The Link column lists molecule types, if any, to which the group is linked. The Z score for a bond length (or angle) is the number of standard deviations the observed value is removed from the expected value. A bond length (or angle) with  $|Z| > 2$  is considered an outlier worth inspection. RMSZ is the root-mean-square of all Z scores of the bond lengths (or angles).

Mol	Type	Chain	Res	Link	Bond lengths			Bond angles		
					Counts	RMSZ	# Z  > 2	Counts	RMSZ	# Z  > 2
4	LBH	A	2004	2	27,28,28	2.15	10 (37%)	30,37,37	1.27	2 (6%)
5	GOL	A	2005	-	5,5,5	0.35	0	5,5,5	0.45	0
4	LBH	B	2004	2	27,28,28	2.15	10 (37%)	30,37,37	1.21	2 (6%)
5	GOL	B	2005	-	5,5,5	0.37	0	5,5,5	0.30	0
5	GOL	B	2006	-	5,5,5	0.38	0	5,5,5	0.38	0
6	EDO	B	2007	-	3,3,3	0.44	0	2,2,2	0.41	0

In the following table, the Chirals column lists the number of chiral outliers, the number of chiral centers analysed, the number of these observed in the model and the number defined in the Chemical Component Dictionary. Similar counts are reported in the Torsion and Rings columns. '-' means no outliers of that kind were identified.

Mol	Type	Chain	Res	Link	Chirals	Torsions	Rings
4	LBH	A	2004	2	-	0/14/14/14	0/3/3/3
5	GOL	A	2005	-	-	0/4/4/4	0/0/0/0
4	LBH	B	2004	2	-	0/14/14/14	0/3/3/3
5	GOL	B	2005	-	-	0/4/4/4	0/0/0/0
5	GOL	B	2006	-	-	0/4/4/4	0/0/0/0
6	EDO	B	2007	-	-	0/1/1/1	0/0/0/0

All (20) bond length outliers are listed below:

Mol	Chain	Res	Type	Atoms	Z	Observed(Å)	Ideal(Å)
4	B	2004	LBH	O2-N3	-3.56	1.33	1.39
4	A	2004	LBH	O2-N3	-3.52	1.33	1.39
4	A	2004	LBH	C8-C9	2.05	1.45	1.41
4	B	2004	LBH	C8-C9	2.06	1.45	1.41
4	A	2004	LBH	C7-C8	2.10	1.41	1.36
4	B	2004	LBH	C7-C8	2.13	1.41	1.36
4	B	2004	LBH	C20-C19	2.30	1.39	1.33
4	A	2004	LBH	C20-C19	2.30	1.39	1.33
4	B	2004	LBH	C3-C2	2.60	1.43	1.39
4	A	2004	LBH	C3-C2	2.61	1.43	1.39
4	A	2004	LBH	C6-C5	2.69	1.42	1.36

*Continued on next page...*

*Continued from previous page...*

Mol	Chain	Res	Type	Atoms	Z	Observed(Å)	Ideal(Å)
4	B	2004	LBH	C6-C5	2.74	1.43	1.36
4	B	2004	LBH	C10-C3	2.79	1.57	1.52
4	A	2004	LBH	C10-C3	2.84	1.57	1.52
4	A	2004	LBH	C3-C4	3.43	1.47	1.41
4	B	2004	LBH	C3-C4	3.43	1.47	1.41
4	B	2004	LBH	C20-C21	3.53	1.54	1.48
4	A	2004	LBH	C20-C21	3.54	1.54	1.48
4	A	2004	LBH	C21-N3	6.20	1.44	1.33
4	B	2004	LBH	C21-N3	6.25	1.44	1.33

All (4) bond angle outliers are listed below:

Mol	Chain	Res	Type	Atoms	Z	Observed(°)	Ideal(°)
4	A	2004	LBH	C16-C19-C20	-3.38	118.81	126.92
4	B	2004	LBH	C16-C19-C20	-2.79	120.24	126.92
4	A	2004	LBH	C20-C21-N3	2.96	120.14	114.18
4	B	2004	LBH	C20-C21-N3	2.98	120.18	114.18

There are no chirality outliers.

There are no torsion outliers.

There are no ring outliers.

4 monomers are involved in 4 short contacts:

Mol	Chain	Res	Type	Clashes	Symm-Clashes
4	A	2004	LBH	1	0
5	A	2005	GOL	1	0
4	B	2004	LBH	2	0
5	B	2006	GOL	1	0

## 5.7 Other polymers [i](#)

There are no such residues in this entry.

## 5.8 Polymer linkage issues [i](#)

There are no chain breaks in this entry.

## 6 Fit of model and data [i](#)

### 6.1 Protein, DNA and RNA chains [i](#)

In the following table, the column labelled ‘#RSRZ> 2’ contains the number (and percentage) of RSRZ outliers, followed by percent RSRZ outliers for the chain as percentile scores relative to all X-ray entries and entries of similar resolution. The OWAB column contains the minimum, median, 95<sup>th</sup> percentile and maximum values of the occupancy-weighted average B-factor per residue. The column labelled ‘Q< 0.9’ lists the number of (and percentage) of residues with an average occupancy less than 0.9.

Mol	Chain	Analysed	<RSRZ>	#RSRZ>2	OWAB(Å <sup>2</sup> )	Q<0.9
1	A	357/364 (98%)	-0.29	4 (1%) 80 77	19, 27, 42, 64	0
1	B	357/364 (98%)	-0.42	4 (1%) 80 77	16, 23, 35, 67	0
All	All	714/728 (98%)	-0.36	8 (1%) 80 77	16, 24, 39, 67	0

All (8) RSRZ outliers are listed below:

Mol	Chain	Res	Type	RSRZ
1	B	771	HIS	3.2
1	A	772	LEU	3.0
1	A	442	PRO	2.7
1	B	442	PRO	2.6
1	B	772	LEU	2.1
1	A	520	ARG	2.1
1	A	516	HIS	2.1
1	B	773	THR	2.0

### 6.2 Non-standard residues in protein, DNA, RNA chains [i](#)

There are no non-standard protein/DNA/RNA residues in this entry.

### 6.3 Carbohydrates [i](#)

There are no carbohydrates in this entry.

### 6.4 Ligands [i](#)

In the following table, the Atoms column lists the number of modelled atoms in the group and the number defined in the chemical component dictionary. The B-factors column lists the minimum,

median, 95<sup>th</sup> percentile and maximum values of B factors of atoms in the group. The column labelled 'Q< 0.9' lists the number of atoms with occupancy less than 0.9.

Mol	Type	Chain	Res	Atoms	RSCC	RSR	B-factors( $\text{\AA}^2$ )	Q<0.9
5	GOL	A	2005	6/6	0.66	0.39	38,42,42,43	0
5	GOL	B	2005	6/6	0.77	0.24	43,44,45,47	0
6	EDO	B	2007	4/4	0.81	0.32	20,21,22,23	4
4	LBH	A	2004	26/26	0.87	0.26	36,43,46,50	0
5	GOL	B	2006	6/6	0.88	0.30	46,47,48,49	0
4	LBH	B	2004	26/26	0.91	0.22	31,33,39,43	0
3	K	B	2002	1/1	0.97	0.06	22,22,22,22	0
3	K	A	2003	1/1	0.98	0.07	28,28,28,28	0
3	K	B	2003	1/1	0.98	0.05	21,21,21,21	0
3	K	A	2002	1/1	0.98	0.14	24,24,24,24	0
2	ZN	A	2001	1/1	0.99	0.04	34,34,34,34	0
2	ZN	B	2001	1/1	0.99	0.06	39,39,39,39	0

## 6.5 Other polymers [i](#)

There are no such residues in this entry.