



Full wwPDB X-ray Structure Validation Report ⓘ

Mar 10, 2024 – 01:40 AM EST

PDB ID : 4EGW
Title : The structure of the soluble domain of CorA from *Methanocaldococcus jannaschii*
Authors : Guskov, A.; Nordin, N.; Reynaud, A.; Engman, H.; Lundback, A.-K.; Jong, A.J.O.; Cornvik, T.; Phua, T.; Eshaghi, S.
Deposited on : 2012-04-02
Resolution : 2.50 Å(reported)

This is a Full wwPDB X-ray Structure Validation Report for a publicly released PDB entry.

We welcome your comments at validation@mail.wwpdb.org

A user guide is available at

<https://www.wwpdb.org/validation/2017/XrayValidationReportHelp>

with specific help available everywhere you see the ⓘ symbol.

The types of validation reports are described at

<http://www.wwpdb.org/validation/2017/FAQs#types>.

The following versions of software and data (see [references ⓘ](#)) were used in the production of this report:

MolProbity : 4.02b-467
Mogul : 1.8.5 (274361), CSD as541be (2020)
Xtriage (Phenix) : 1.13
EDS : 2.36
Percentile statistics : 20191225.v01 (using entries in the PDB archive December 25th 2019)
Refmac : 5.8.0158
CCP4 : 7.0.044 (Gargrove)
Ideal geometry (proteins) : Engh & Huber (2001)
Ideal geometry (DNA, RNA) : Parkinson et al. (1996)
Validation Pipeline (wwPDB-VP) : 2.36

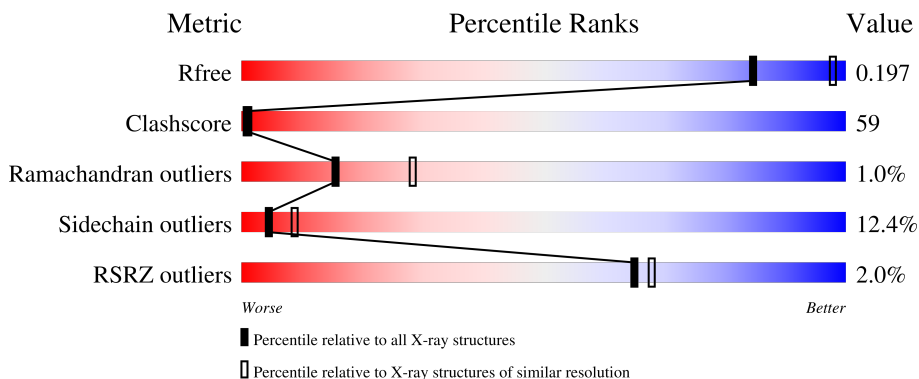
1 Overall quality at a glance

The following experimental techniques were used to determine the structure:

X-RAY DIFFRACTION

The reported resolution of this entry is 2.50 Å.

Percentile scores (ranging between 0-100) for global validation metrics of the entry are shown in the following graphic. The table shows the number of entries on which the scores are based.



Metric	Whole archive (#Entries)	Similar resolution (#Entries, resolution range(Å))
R_{free}	130704	4661 (2.50-2.50)
Clashscore	141614	5346 (2.50-2.50)
Ramachandran outliers	138981	5231 (2.50-2.50)
Sidechain outliers	138945	5233 (2.50-2.50)
RSRZ outliers	127900	4559 (2.50-2.50)

The table below summarises the geometric issues observed across the polymeric chains and their fit to the electron density. The red, orange, yellow and green segments of the lower bar indicate the fraction of residues that contain outliers for ≥ 3 , 2, 1 and 0 types of geometric quality criteria respectively. A grey segment represents the fraction of residues that are not modelled. The numeric value for each fraction is indicated below the corresponding segment, with a dot representing fractions $\leq 5\%$. The upper red bar (where present) indicates the fraction of residues that have poor fit to the electron density. The numeric value is given above the bar.

Mol	Chain	Length	Quality of chain
1	A	280	 2% 29% 49% 9% 11%
1	B	280	 2% 26% 55% 7% 11%

The following table lists non-polymeric compounds, carbohydrate monomers and non-standard residues in protein, DNA, RNA chains that are outliers for geometric or electron-density-fit criteria:

Mol	Type	Chain	Res	Chirality	Geometry	Clashes	Electron density
2	HEZ	A	303	-	-	X	-
3	BU1	A	305	-	-	X	-
3	BU1	A	309	-	-	X	-
3	BU1	B	302	-	-	X	-
4	PGO	A	318	-	-	X	-

2 Entry composition i

There are 6 unique types of molecules in this entry. The entry contains 4433 atoms, of which 0 are hydrogens and 0 are deuteriums.

In the tables below, the ZeroOcc column contains the number of atoms modelled with zero occupancy, the AltConf column contains the number of residues with at least one atom in alternate conformation and the Trace column contains the number of residues modelled with at most 2 atoms.

- Molecule 1 is a protein called Magnesium transport protein CorA.

Mol	Chain	Residues	Atoms					ZeroOcc	AltConf	Trace
			Total	C	N	O	S			
1	A	250	2071	1339	328	397	7	0	1	0
1	B	250	2073	1339	329	397	8	0	2	0

There are 44 discrepancies between the modelled and reference sequences:

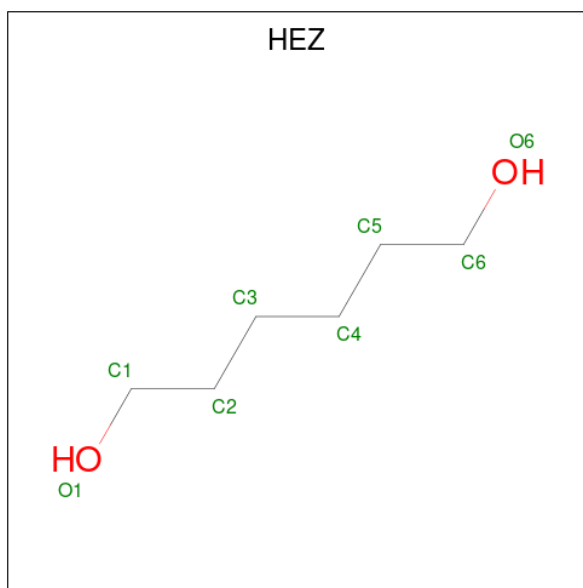
Chain	Residue	Modelled	Actual	Comment	Reference
A	-21	MET	-	expression tag	UNP Q58439
A	-20	HIS	-	expression tag	UNP Q58439
A	-19	HIS	-	expression tag	UNP Q58439
A	-18	HIS	-	expression tag	UNP Q58439
A	-17	HIS	-	expression tag	UNP Q58439
A	-16	HIS	-	expression tag	UNP Q58439
A	-15	HIS	-	expression tag	UNP Q58439
A	-14	SER	-	expression tag	UNP Q58439
A	-13	SER	-	expression tag	UNP Q58439
A	-12	GLY	-	expression tag	UNP Q58439
A	-11	VAL	-	expression tag	UNP Q58439
A	-10	ASP	-	expression tag	UNP Q58439
A	-9	LEU	-	expression tag	UNP Q58439
A	-8	GLY	-	expression tag	UNP Q58439
A	-7	THR	-	expression tag	UNP Q58439
A	-6	GLU	-	expression tag	UNP Q58439
A	-5	ASN	-	expression tag	UNP Q58439
A	-4	LEU	-	expression tag	UNP Q58439
A	-3	TYR	-	expression tag	UNP Q58439
A	-2	PHE	-	expression tag	UNP Q58439
A	-1	GLN	-	expression tag	UNP Q58439
A	0	SER	-	expression tag	UNP Q58439
B	-21	MET	-	expression tag	UNP Q58439
B	-20	HIS	-	expression tag	UNP Q58439
B	-19	HIS	-	expression tag	UNP Q58439

Continued on next page...

Continued from previous page...

Chain	Residue	Modelled	Actual	Comment	Reference
B	-18	HIS	-	expression tag	UNP Q58439
B	-17	HIS	-	expression tag	UNP Q58439
B	-16	HIS	-	expression tag	UNP Q58439
B	-15	HIS	-	expression tag	UNP Q58439
B	-14	SER	-	expression tag	UNP Q58439
B	-13	SER	-	expression tag	UNP Q58439
B	-12	GLY	-	expression tag	UNP Q58439
B	-11	VAL	-	expression tag	UNP Q58439
B	-10	ASP	-	expression tag	UNP Q58439
B	-9	LEU	-	expression tag	UNP Q58439
B	-8	GLY	-	expression tag	UNP Q58439
B	-7	THR	-	expression tag	UNP Q58439
B	-6	GLU	-	expression tag	UNP Q58439
B	-5	ASN	-	expression tag	UNP Q58439
B	-4	LEU	-	expression tag	UNP Q58439
B	-3	TYR	-	expression tag	UNP Q58439
B	-2	PHE	-	expression tag	UNP Q58439
B	-1	GLN	-	expression tag	UNP Q58439
B	0	SER	-	expression tag	UNP Q58439

- Molecule 2 is HEXANE-1,6-DIOL (three-letter code: HEZ) (formula: C₆H₁₄O₂).



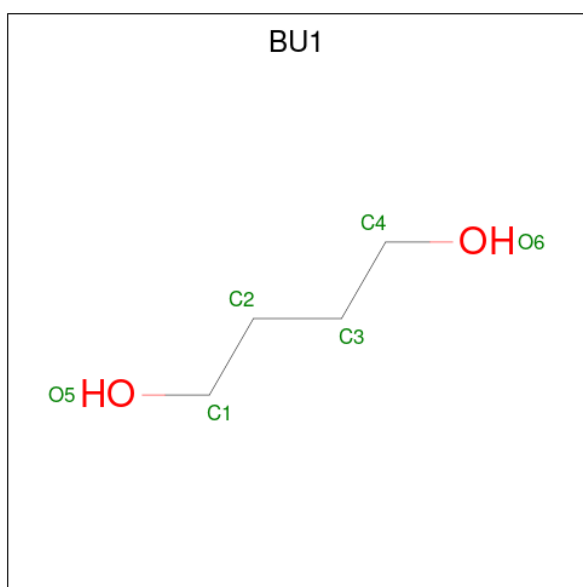
Mol	Chain	Residues	Atoms			ZeroOcc	AltConf
2	A	1	Total	C	O	0	0
			8	6	2		
2	A	1	Total	C	O	0	0
			8	6	2		

Continued on next page...

Continued from previous page...

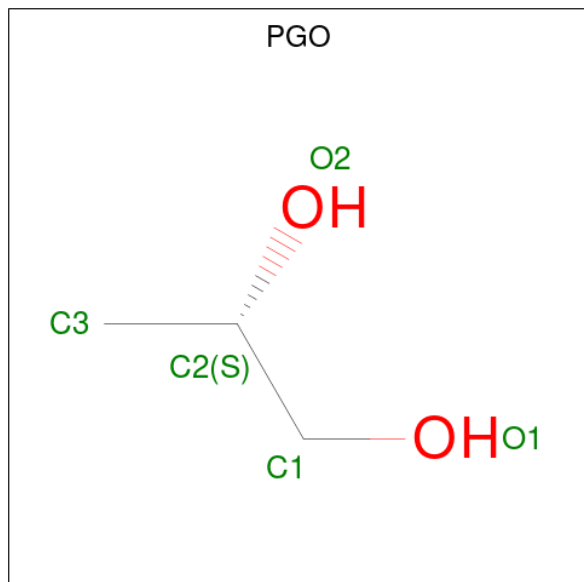
Mol	Chain	Residues	Atoms	ZeroOcc	AltConf
2	A	1	Total C O 8 6 2	0	0
2	A	1	Total C O 8 6 2	0	0
2	A	1	Total C O 8 6 2	0	0
2	A	1	Total C O 8 6 2	0	0
2	A	1	Total C O 8 6 2	0	0
2	A	1	Total C O 8 6 2	0	0
2	B	1	Total C O 8 6 2	0	0
2	B	1	Total C O 8 6 2	0	0
2	B	1	Total C O 8 6 2	0	0
2	B	1	Total C O 8 6 2	0	0
2	B	1	Total C O 8 6 2	0	0

- Molecule 3 is 1,4-BUTANEDIOL (three-letter code: BU1) (formula: C₄H₁₀O₂).



Mol	Chain	Residues	Atoms	ZeroOcc	AltConf
3	A	1	Total C O 6 4 2	0	0
3	A	1	Total C O 6 4 2	0	0
3	A	1	Total C O 6 4 2	0	0
3	A	1	Total C O 6 4 2	0	0
3	B	1	Total C O 6 4 2	0	0
3	B	1	Total C O 6 4 2	0	0

- Molecule 4 is S-1,2-PROPANEDIOL (three-letter code: PGO) (formula: C₃H₈O₂).



Mol	Chain	Residues	Atoms	ZeroOcc	AltConf
4	A	1	Total C O 5 3 2	0	0
4	A	1	Total C O 5 3 2	0	0
4	A	1	Total C O 5 3 2	0	0
4	A	1	Total C O 5 3 2	0	0
4	A	1	Total C O 5 3 2	0	0
4	A	1	Total C O 5 3 2	0	0

Continued on next page...

Continued from previous page...

Mol	Chain	Residues	Atoms			ZeroOcc	AltConf
4	B	1	Total	C	O	0	0
			5	3	2		
4	B	1	Total	C	O	0	0
			5	3	2		
4	B	1	Total	C	O	0	0
			5	3	2		
4	B	1	Total	C	O	0	0
			5	3	2		

- Molecule 5 is MAGNESIUM ION (three-letter code: MG) (formula: Mg).

Mol	Chain	Residues	Atoms		ZeroOcc	AltConf
5	A	2	Total	Mg	0	0
			2	2		
5	B	1	Total	Mg	0	0
			1	1		

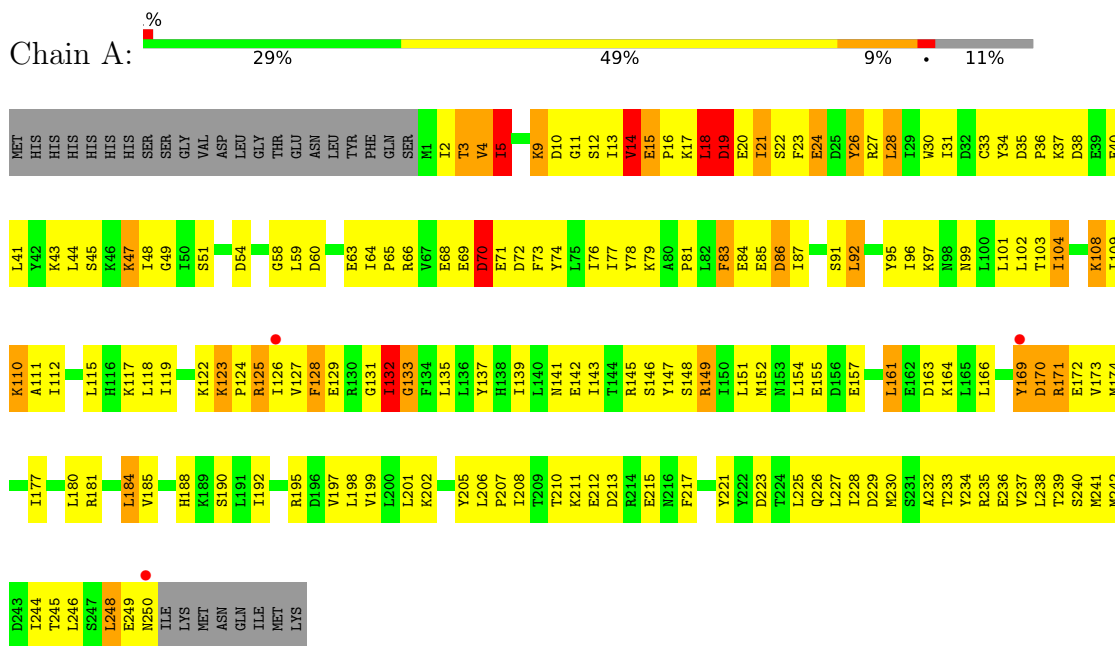
- Molecule 6 is water.

Mol	Chain	Residues	Atoms		ZeroOcc	AltConf
6	A	49	Total	O	0	0
			49	49		
6	B	47	Total	O	0	0
			47	47		

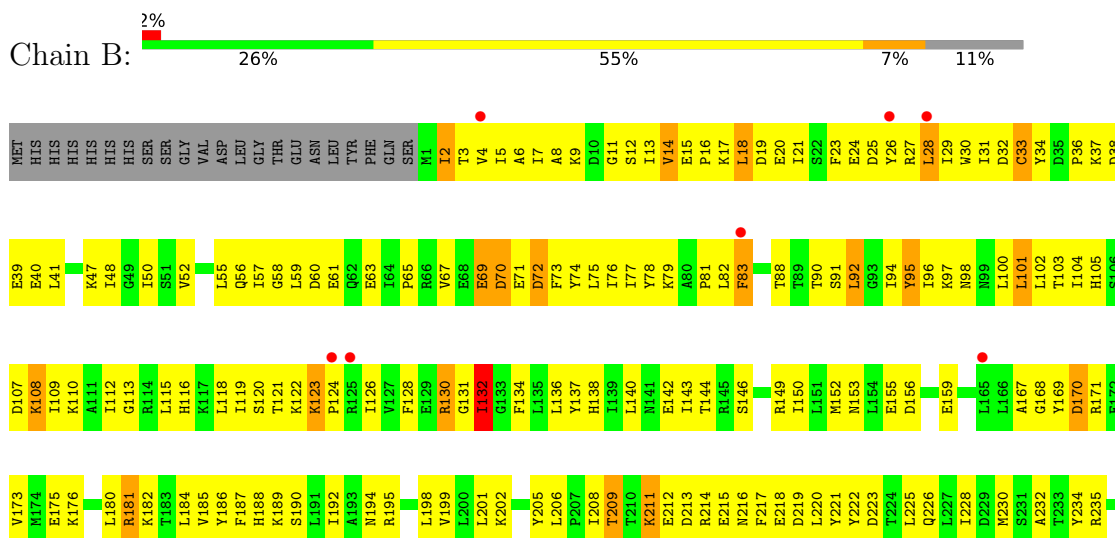
3 Residue-property plots i

These plots are drawn for all protein, RNA, DNA and oligosaccharide chains in the entry. The first graphic for a chain summarises the proportions of the various outlier classes displayed in the second graphic. The second graphic shows the sequence view annotated by issues in geometry and electron density. Residues are color-coded according to the number of geometric quality criteria for which they contain at least one outlier: green = 0, yellow = 1, orange = 2 and red = 3 or more. A red dot above a residue indicates a poor fit to the electron density ($RSRZ > 2$). Stretches of 2 or more consecutive residues without any outlier are shown as a green connector. Residues present in the sample, but not in the model, are shown in grey.

- Molecule 1: Magnesium transport protein CorA



- Molecule 1: Magnesium transport protein CorA



L238	L239	S240	M241	M242	D243	T244	T245	L246	S247	L248	E249	M250	ILE	LYS	MET	ASN	GLN	ILE	MET	LYS
------	------	------	------	------	------	------	------	------	------	------	------	------	-----	-----	-----	-----	-----	-----	-----	-----

4 Data and refinement statistics

Property	Value	Source
Space group	P 61	Depositor
Cell constants a, b, c, α , β , γ	68.29Å 68.29Å 241.94Å 90.00° 90.00° 120.00°	Depositor
Resolution (Å)	47.69 – 2.50 47.69 – 2.50	Depositor EDS
% Data completeness (in resolution range)	99.9 (47.69-2.50) 99.9 (47.69-2.50)	Depositor EDS
R_{merge}	(Not available)	Depositor
R_{sym}	(Not available)	Depositor
$\langle I/\sigma(I) \rangle$ ¹	2.31 (at 2.51Å)	Xtrriage
Refinement program	PHENIX (phenix.refine: 1.7.1_743)	Depositor
R, R_{free}	0.153 , 0.195 0.153 , 0.197	Depositor DCC
R_{free} test set	1099 reflections (5.00%)	wwPDB-VP
Wilson B-factor (Å ²)	51.2	Xtrriage
Anisotropy	0.094	Xtrriage
Bulk solvent k_{sol} (e/Å ³), B_{sol} (Å ²)	0.36 , 76.2	EDS
L-test for twinning ²	$\langle L \rangle = 0.45$, $\langle L^2 \rangle = 0.27$	Xtrriage
Estimated twinning fraction	0.490 for h,-h-k,-l	Xtrriage
Reported twinning fraction	0.500 for k,h,-l	Depositor
Outliers	0 of 21977 reflections	Xtrriage
F_o, F_c correlation	0.96	EDS
Total number of atoms	4433	wwPDB-VP
Average B, all atoms (Å ²)	68.0	wwPDB-VP

Xtrriage's analysis on translational NCS is as follows: *The largest off-origin peak in the Patterson function is 4.28% of the height of the origin peak. No significant pseudotranslation is detected.*

¹Intensities estimated from amplitudes.

²Theoretical values of $\langle |L| \rangle$, $\langle L^2 \rangle$ for acentric reflections are 0.5, 0.333 respectively for untwinned datasets, and 0.375, 0.2 for perfectly twinned datasets.

5 Model quality [i](#)

5.1 Standard geometry [i](#)

Bond lengths and bond angles in the following residue types are not validated in this section: MG, PGO, BU1, HEZ

The Z score for a bond length (or angle) is the number of standard deviations the observed value is removed from the expected value. A bond length (or angle) with $|Z| > 5$ is considered an outlier worth inspection. RMSZ is the root-mean-square of all Z scores of the bond lengths (or angles).

Mol	Chain	Bond lengths		Bond angles	
		RMSZ	# Z >5	RMSZ	# Z >5
1	A	0.39	0/2107	0.67	3/2843 (0.1%)
1	B	0.39	0/2111	0.63	0/2847
All	All	0.39	0/4218	0.65	3/5690 (0.1%)

Chiral center outliers are detected by calculating the chiral volume of a chiral center and verifying if the center is modelled as a planar moiety or with the opposite hand. A planarity outlier is detected by checking planarity of atoms in a peptide group, atoms in a mainchain group or atoms of a sidechain that are expected to be planar.

Mol	Chain	#Chirality outliers	#Planarity outliers
1	A	0	3
1	B	0	1
All	All	0	4

There are no bond length outliers.

All (3) bond angle outliers are listed below:

Mol	Chain	Res	Type	Atoms	Z	Observed(°)	Ideal(°)
1	A	18	LEU	CA-CB-CG	5.82	128.68	115.30
1	A	133	GLY	N-CA-C	-5.34	99.74	113.10
1	A	15	GLU	C-N-CD	-5.22	109.12	120.60

There are no chirality outliers.

All (4) planarity outliers are listed below:

Mol	Chain	Res	Type	Group
1	A	132	ILE	Peptide
1	A	19	ASP	Peptide
1	A	70	ASP	Peptide

Continued on next page...

Continued from previous page...

Mol	Chain	Res	Type	Group
1	B	132	ILE	Peptide

5.2 Too-close contacts [i](#)

In the following table, the Non-H and H(model) columns list the number of non-hydrogen atoms and hydrogen atoms in the chain respectively. The H(added) column lists the number of hydrogen atoms added and optimized by MolProbity. The Clashes column lists the number of clashes within the asymmetric unit, whereas Symm-Clashes lists symmetry-related clashes.

Mol	Chain	Non-H	H(model)	H(added)	Clashes	Symm-Clashes
1	A	2071	0	2131	258	1
1	B	2073	0	2139	257	1
2	A	64	0	112	18	0
2	B	40	0	70	6	0
3	A	24	0	40	12	0
3	B	12	0	20	5	0
4	A	30	0	48	9	0
4	B	20	0	32	1	0
5	A	2	0	0	0	0
5	B	1	0	0	0	0
6	A	49	0	0	12	0
6	B	47	0	0	23	0
All	All	4433	0	4592	526	1

The all-atom clashscore is defined as the number of clashes found per 1000 atoms (including hydrogen atoms). The all-atom clashscore for this structure is 59.

All (526) close contacts within the same asymmetric unit are listed below, sorted by their clash magnitude.

Atom-1	Atom-2	Interatomic distance (Å)	Clash overlap (Å)
1:A:9:LYS:H	1:A:9:LYS:HE2	1.08	1.09
1:B:211:LYS:HG3	1:B:214:ARG:HH22	1.17	1.04
1:B:23:PHE:HA	1:B:26:TYR:CD1	1.94	1.02
1:A:169[B]:TYR:CG	1:A:170:ASP:N	2.28	0.98
1:B:181:ARG:O	1:B:185:VAL:HG23	1.63	0.98
1:A:21:ILE:HG23	1:A:47:LYS:NZ	1.79	0.96
1:A:235:ARG:HD2	4:A:318:PGO:H33	1.47	0.96
1:A:97:LYS:HZ3	2:A:311:HEZ:H51	1.31	0.95
1:B:195:ARG:O	1:B:199:VAL:HG23	1.66	0.95
1:A:85:GLU:OE1	6:A:433:HOH:O	1.83	0.95

Continued on next page...

Continued from previous page...

Atom-1	Atom-2	Interatomic distance (Å)	Clash overlap (Å)
1:B:13:ILE:HG21	1:B:27:ARG:HH11	1.32	0.94
1:A:18:LEU:HD22	1:A:19:ASP:H	1.34	0.92
1:B:171:ARG:NH2	6:B:414:HOH:O	1.98	0.90
1:B:122:LYS:HD2	1:B:126:ILE:HD12	1.53	0.90
1:B:12:SER:HB2	1:B:27:ARG:H	1.35	0.90
1:B:13:ILE:CG2	1:B:27:ARG:HH11	1.84	0.89
1:A:27:ARG:HE	1:A:129:GLU:HG2	1.38	0.88
1:B:205:TYR:HE1	1:B:211:LYS:HE2	1.37	0.88
1:B:211:LYS:HG3	1:B:214:ARG:NH2	1.89	0.88
1:B:17:LYS:NZ	1:B:120:SER:OG	2.07	0.87
1:A:71:GLU:HB3	3:A:309:BU1:H32	1.57	0.87
1:A:155:GLU:OE1	6:A:412:HOH:O	1.91	0.87
1:A:125:ARG:HD2	1:A:126:ILE:H	1.40	0.86
1:B:13:ILE:HG13	1:B:14:VAL:HG13	1.58	0.86
1:A:68:GLU:HG2	2:A:303:HEZ:H22	1.58	0.85
1:A:13:ILE:HD12	1:A:125:ARG:HA	1.59	0.85
1:A:97:LYS:NZ	2:A:311:HEZ:H51	1.89	0.85
1:B:122:LYS:NZ	1:B:123:LYS:O	2.10	0.85
1:B:3:THR:HG21	6:B:427:HOH:O	1.76	0.84
1:A:185:VAL:HG22	4:A:318:PGO:H31	1.60	0.83
1:B:38:ASP:OD2	6:B:411:HOH:O	1.95	0.83
1:A:181:ARG:O	1:A:185:VAL:HG23	1.78	0.83
1:A:9:LYS:H	1:A:9:LYS:CE	1.88	0.83
2:A:303:HEZ:H21	2:A:306:HEZ:H61	1.59	0.83
1:B:223:ASP:O	1:B:226[A]:GLN:HB2	1.80	0.82
2:A:310:HEZ:O1	1:B:226[A]:GLN:NE2	2.11	0.81
1:B:115:LEU:O	1:B:119:ILE:N	2.10	0.81
1:B:28:LEU:HD22	1:B:132:ILE:HB	1.63	0.81
1:B:205:TYR:HD1	3:B:302:BU1:H21	1.45	0.80
1:B:23:PHE:HA	1:B:26:TYR:HD1	1.41	0.80
1:A:12:SER:O	1:A:26:TYR:HB3	1.82	0.80
1:A:14:VAL:O	1:A:15:GLU:HG3	1.83	0.79
1:A:9:LYS:HE2	1:A:9:LYS:N	1.92	0.79
2:A:303:HEZ:H51	4:A:317:PGO:H12	1.64	0.79
1:B:5:ILE:HG21	1:B:37:LYS:HG2	1.65	0.78
2:B:303:HEZ:H62	2:B:305:HEZ:H12	1.66	0.78
1:A:210:THR:N	1:A:213:ASP:OD2	2.14	0.77
1:B:131:GLY:HA2	1:B:134:PHE:HB3	1.67	0.76
1:B:132:ILE:HG23	1:B:132:ILE:O	1.83	0.76
1:A:13:ILE:HG13	2:A:312:HEZ:H61	1.67	0.76
1:A:197:VAL:O	1:A:201:LEU:HD13	1.85	0.76

Continued on next page...

Continued from previous page...

Atom-1	Atom-2	Interatomic distance (Å)	Clash overlap (Å)
1:A:169[A]:TYR:OH	1:A:171:ARG:NH1	2.19	0.76
1:A:155:GLU:OE2	3:A:305:BU1:O6	2.02	0.75
1:B:206:LEU:HB2	1:B:209:THR:HG23	1.66	0.75
1:B:37:LYS:HG3	1:B:40:GLU:H	1.50	0.74
1:B:39:GLU:OE2	6:B:411:HOH:O	2.05	0.74
1:A:71:GLU:HG2	4:A:320:PGO:H11	1.70	0.73
1:A:14:VAL:HG21	1:A:124:PRO:HA	1.71	0.73
1:A:60:ASP:HB3	1:A:63:GLU:HG2	1.71	0.72
1:A:235:ARG:O	1:A:239:THR:HG23	1.89	0.72
1:B:21:ILE:H	1:B:47:LYS:NZ	1.88	0.72
1:A:129:GLU:OE2	6:A:417:HOH:O	2.07	0.72
1:B:21:ILE:H	1:B:47:LYS:CE	2.03	0.72
1:A:173:VAL:O	1:A:177:ILE:HG13	1.90	0.72
2:A:310:HEZ:HO1	1:B:226[A]:GLN:HE21	1.38	0.71
1:A:71:GLU:OE1	3:A:309:BU1:O5	2.07	0.71
1:A:108:LYS:HD3	1:A:109:ILE:N	2.04	0.71
1:A:234:TYR:CE1	3:A:305:BU1:H41	2.25	0.71
1:A:71:GLU:CB	3:A:309:BU1:H32	2.21	0.71
1:B:21:ILE:O	1:B:47:LYS:NZ	2.21	0.70
1:B:205:TYR:CD1	3:B:302:BU1:H21	2.27	0.70
1:B:107:ASP:OD1	6:B:403:HOH:O	2.10	0.70
1:B:105:HIS:HE1	1:B:108:LYS:HE3	1.56	0.70
1:B:12:SER:HB2	1:B:26:TYR:HA	1.73	0.70
1:B:31:ILE:O	1:B:102:LEU:HD12	1.91	0.70
1:A:5:ILE:HG13	1:A:40:GLU:CD	2.12	0.69
2:A:303:HEZ:H52	2:A:303:HEZ:H12	1.74	0.69
1:B:12:SER:HB2	1:B:27:ARG:N	2.06	0.69
1:B:92:LEU:HD13	1:B:94:ILE:HG13	1.74	0.69
4:A:315:PGO:O1	4:A:316:PGO:H2	1.92	0.69
1:B:5:ILE:HG23	1:B:37:LYS:H	1.58	0.69
1:A:45:SER:O	1:A:49:GLY:N	2.24	0.69
1:A:96:ILE:HD12	1:A:208:ILE:HD12	1.75	0.69
1:A:237:VAL:O	1:A:241:MET:HG3	1.92	0.69
1:A:240:SER:O	1:A:244:ILE:HG12	1.92	0.69
1:B:176:LYS:O	1:B:176:LYS:HD3	1.93	0.68
1:B:176:LYS:O	1:B:180:LEU:HG	1.93	0.68
1:B:169:TYR:CD1	1:B:169:TYR:O	2.47	0.68
1:B:21:ILE:H	1:B:47:LYS:HE3	1.59	0.68
1:B:110:LYS:HE3	6:B:426:HOH:O	1.93	0.68
1:A:78:TYR:O	1:A:92:LEU:HD12	1.94	0.67
1:A:174:MET:HG3	1:A:242:MET:CE	2.25	0.67

Continued on next page...

Continued from previous page...

Atom-1	Atom-2	Interatomic distance (Å)	Clash overlap (Å)
1:B:50:ILE:HG22	1:B:55:LEU:HG	1.77	0.67
1:A:151:LEU:CD1	1:A:227:LEU:HD22	2.25	0.67
1:A:249:GLU:O	1:A:250:ASN:HB2	1.94	0.67
1:B:108:LYS:HD3	1:B:109:ILE:N	2.10	0.67
1:A:3:THR:HG23	1:A:35:ASP:O	1.95	0.67
1:A:13:ILE:HG22	1:A:14:VAL:HG23	1.75	0.66
1:A:78:TYR:HB3	1:A:92:LEU:HD11	1.77	0.66
1:A:10:ASP:O	1:A:30:TRP:N	2.24	0.66
1:A:125:ARG:HD2	1:A:126:ILE:HG12	1.76	0.66
1:B:52:VAL:O	1:B:56:GLN:N	2.26	0.66
1:A:92:LEU:HD12	1:A:92:LEU:H	1.59	0.66
1:B:92:LEU:O	1:B:92:LEU:HD12	1.96	0.66
1:A:115:LEU:O	1:A:119:ILE:HG12	1.96	0.65
1:A:108:LYS:HD2	6:A:438:HOH:O	1.96	0.65
1:B:65:PRO:O	6:B:416:HOH:O	2.14	0.65
1:B:131:GLY:HA2	1:B:134:PHE:CB	2.26	0.65
1:A:27:ARG:NE	1:A:129:GLU:HG2	2.11	0.65
1:A:21:ILE:HG23	1:A:47:LYS:HZ1	1.57	0.65
1:A:31:ILE:O	1:A:102:LEU:HD12	1.96	0.65
1:A:212:GLU:N	1:A:212:GLU:CD	2.49	0.65
1:A:212:GLU:N	1:A:212:GLU:OE2	2.29	0.65
1:A:5:ILE:HD13	1:A:36:PRO:HA	1.77	0.65
1:A:244:ILE:O	1:A:248:LEU:HD22	1.96	0.65
1:B:240:SER:O	1:B:243:ASP:HB2	1.96	0.65
1:A:33:CYS:HB3	1:A:104:ILE:HD12	1.78	0.65
1:A:5:ILE:HD12	1:A:5:ILE:C	2.18	0.64
1:A:23:PHE:C	1:A:24:GLU:HG3	2.17	0.64
1:B:69:GLU:HG2	1:B:74:TYR:CZ	2.32	0.64
1:B:60:ASP:HB3	1:B:63:GLU:HG2	1.78	0.64
1:A:125:ARG:CD	1:A:126:ILE:H	2.11	0.64
1:B:69:GLU:HG2	1:B:74:TYR:CE2	2.33	0.64
1:A:148:SER:O	1:A:152:MET:HG3	1.98	0.64
1:A:188:HIS:O	1:A:192:ILE:HG12	1.97	0.64
1:A:13:ILE:CD1	1:A:125:ARG:HA	2.28	0.64
1:B:13:ILE:HA	1:B:14:VAL:HG13	1.79	0.64
2:A:304:HEZ:H11	2:B:308:HEZ:H22	1.80	0.63
1:B:205:TYR:CE1	1:B:211:LYS:HE2	2.27	0.63
1:A:117:LYS:NZ	6:A:426:HOH:O	2.31	0.63
1:A:109:ILE:HA	6:A:410:HOH:O	1.97	0.63
2:A:306:HEZ:H32	6:A:441:HOH:O	1.99	0.63
1:A:234:TYR:HE1	3:A:305:BU1:H41	1.61	0.63

Continued on next page...

Continued from previous page...

Atom-1	Atom-2	Interatomic distance (Å)	Clash overlap (Å)
1:B:94:ILE:HG21	1:B:136:LEU:HD13	1.80	0.63
1:B:105:HIS:CE1	1:B:108:LYS:HE3	2.34	0.62
1:A:71:GLU:HG2	4:A:320:PGO:C1	2.30	0.62
1:B:153:ASN:O	1:B:156:ASP:HB2	1.99	0.62
1:A:17:LYS:O	1:A:21:ILE:HG22	2.00	0.62
1:B:5:ILE:HD13	1:B:37:LYS:NZ	2.15	0.62
1:A:68:GLU:CG	2:A:303:HEZ:H22	2.30	0.61
1:A:198:LEU:O	1:A:202:LYS:HB3	1.99	0.61
1:B:221:TYR:HE2	1:B:222:TYR:CE1	2.18	0.61
1:B:143:ILE:O	1:B:146:SER:HB2	1.99	0.61
1:B:198:LEU:HD13	1:B:221:TYR:HA	1.83	0.61
1:A:13:ILE:HG23	1:A:125:ARG:H	1.66	0.61
1:A:174:MET:HB2	1:A:245:THR:HG21	1.82	0.61
1:B:226[B]:GLN:HG3	1:B:230:MET:HE1	1.83	0.61
1:B:113:GLY:HA2	6:B:432:HOH:O	2.00	0.61
1:A:19:ASP:HA	1:A:47:LYS:HE3	1.83	0.60
1:B:13:ILE:HA	1:B:14:VAL:CG1	2.31	0.60
1:B:30:TRP:CD1	1:B:101:LEU:HD12	2.36	0.60
1:B:189:LYS:HG2	6:B:415:HOH:O	2.00	0.60
1:A:9:LYS:HD2	1:A:16:PRO:HA	1.83	0.60
1:B:101:LEU:HD13	1:B:102:LEU:N	2.16	0.60
1:A:3:THR:O	1:A:5:ILE:HG22	2.02	0.60
1:A:83:PHE:C	1:A:84:GLU:HG3	2.21	0.60
1:B:52:VAL:HG12	1:B:56:GLN:HG3	1.84	0.60
1:A:96:ILE:HG23	1:A:132:ILE:HD11	1.84	0.60
1:A:111:ALA:HB1	1:A:142:GLU:HB3	1.82	0.60
1:B:69:GLU:OE1	1:B:70:ASP:HB2	2.02	0.60
1:A:118:LEU:HD21	1:A:122:LYS:HD3	1.83	0.59
1:B:121:THR:O	1:B:123:LYS:NZ	2.25	0.59
1:B:170:ASP:HB3	1:B:173:VAL:HG23	1.84	0.59
1:A:245:THR:HA	1:A:248:LEU:HD23	1.84	0.59
1:B:130:ARG:O	1:B:130:ARG:HG3	2.03	0.59
1:B:175:GLU:OE1	6:B:444:HOH:O	2.16	0.59
1:B:12:SER:OG	1:B:27:ARG:HG3	2.02	0.59
1:B:205:TYR:HA	6:B:404:HOH:O	2.02	0.59
1:A:18:LEU:HD22	1:A:19:ASP:N	2.12	0.59
1:A:206:LEU:HD12	6:A:402:HOH:O	2.02	0.59
1:A:19:ASP:CG	1:A:19:ASP:O	2.41	0.59
1:B:170:ASP:OD1	6:B:437:HOH:O	2.16	0.59
1:A:13:ILE:HD12	1:A:125:ARG:CA	2.31	0.59
1:A:92:LEU:O	1:A:92:LEU:HD13	2.02	0.59

Continued on next page...

Continued from previous page...

Atom-1	Atom-2	Interatomic distance (Å)	Clash overlap (Å)
1:B:9:LYS:HE2	1:B:19:ASP:HA	1.83	0.59
1:B:81:PRO:HG2	1:B:146:SER:HB3	1.84	0.59
1:A:164:LYS:HD3	1:A:173:VAL:HG22	1.85	0.59
1:A:211:LYS:O	1:A:215:GLU:HG3	2.02	0.59
1:A:44:LEU:O	1:A:48:ILE:HG12	2.03	0.59
1:A:83:PHE:CD1	1:A:83:PHE:N	2.71	0.58
1:B:7:ILE:HG22	1:B:9:LYS:HE3	1.86	0.58
1:A:232:ALA:O	1:A:236:GLU:HG3	2.02	0.58
1:B:65:PRO:HG3	1:B:79:LYS:HG2	1.85	0.58
1:A:5:ILE:HD13	1:A:36:PRO:CA	2.33	0.58
1:A:192:ILE:HD13	1:A:228:ILE:HD13	1.85	0.58
1:B:23:PHE:HB2	1:B:29:ILE:HG12	1.86	0.58
1:B:23:PHE:HB2	1:B:29:ILE:CD1	2.34	0.57
1:B:19:ASP:C	1:B:21:ILE:HG23	2.24	0.57
1:B:30:TRP:HA	1:B:101:LEU:O	2.04	0.57
1:B:239:THR:O	1:B:242[B]:MET:HB3	2.04	0.57
1:B:137:TYR:CE1	1:B:216:ASN:HB3	2.39	0.57
1:A:60:ASP:HB3	1:A:63:GLU:CG	2.33	0.57
1:A:64:ILE:O	1:A:66:ARG:NH1	2.37	0.57
1:B:13:ILE:HG23	1:B:13:ILE:O	2.04	0.57
1:A:21:ILE:HD11	1:A:23:PHE:HE1	1.70	0.57
1:B:249:GLU:O	1:B:250:ASN:HB2	2.04	0.57
1:B:70:ASP:HA	1:B:73:PHE:O	2.04	0.57
1:A:48:ILE:O	1:A:97:LYS:NZ	2.29	0.57
1:A:199:VAL:HG13	1:A:202:LYS:HE3	1.85	0.57
1:B:122:LYS:HD2	1:B:126:ILE:CD1	2.28	0.57
1:A:27:ARG:CB	1:A:28:LEU:HD23	2.36	0.56
1:B:12:SER:CB	1:B:26:TYR:HA	2.35	0.56
1:B:188:HIS:O	1:B:192:ILE:HG13	2.05	0.56
1:B:221:TYR:CE2	1:B:222:TYR:CE1	2.94	0.56
1:B:12:SER:OG	1:B:13:ILE:N	2.39	0.56
1:A:137:TYR:HB2	1:A:217:PHE:CE1	2.40	0.56
1:A:174:MET:HG3	1:A:242:MET:HE3	1.87	0.56
1:A:132:ILE:O	1:A:132:ILE:HG12	2.05	0.56
1:B:211:LYS:CD	1:B:214:ARG:HH12	2.18	0.56
1:A:79:LYS:HE2	1:A:91:SER:OG	2.05	0.56
1:B:5:ILE:HG12	1:B:37:LYS:H	1.70	0.56
1:A:21:ILE:HD11	1:A:23:PHE:CE1	2.40	0.56
1:A:223:ASP:O	1:A:227:LEU:HG	2.05	0.56
1:B:181:ARG:HD2	6:B:409:HOH:O	2.05	0.55
1:B:206:LEU:HB3	1:B:208:ILE:HG12	1.88	0.55

Continued on next page...

Continued from previous page...

Atom-1	Atom-2	Interatomic distance (Å)	Clash overlap (Å)
1:B:211:LYS:CG	1:B:214:ARG:HH22	2.05	0.55
1:B:24:GLU:HA	1:B:24:GLU:OE2	2.05	0.55
1:A:70:ASP:HA	1:A:73:PHE:O	2.06	0.55
1:A:74:TYR:O	1:A:95:TYR:HA	2.07	0.55
1:B:82:LEU:HD22	1:B:90:THR:HB	1.89	0.55
1:B:184:LEU:HD21	1:B:234:TYR:HB2	1.89	0.55
1:A:3:THR:O	1:A:3:THR:HG22	2.06	0.55
1:B:18:LEU:HB2	1:B:21:ILE:CG2	2.37	0.55
1:A:5:ILE:HB	1:A:36:PRO:HA	1.89	0.54
1:A:118:LEU:CD2	1:A:119:ILE:HD13	2.37	0.54
2:A:303:HEZ:H51	4:A:317:PGO:C1	2.36	0.54
1:B:130:ARG:NH1	1:B:213:ASP:OD1	2.41	0.54
1:B:169:TYR:HE1	4:B:306:PGO:HO2	1.55	0.54
1:A:71:GLU:HB3	3:A:309:BU1:C3	2.36	0.54
1:A:122:LYS:HG3	6:A:443:HOH:O	2.07	0.54
1:A:126:ILE:HB	1:A:127:VAL:HG12	1.90	0.54
1:B:5:ILE:HG12	1:B:37:LYS:N	2.23	0.54
1:B:11:GLY:N	1:B:16:PRO:HG2	2.23	0.54
1:B:182:LYS:HZ2	1:B:186:TYR:HE1	1.55	0.54
1:B:7:ILE:HG22	1:B:9:LYS:CE	2.37	0.54
1:A:163:ASP:O	1:A:166:LEU:HG	2.08	0.54
1:A:27:ARG:O	1:A:99:ASN:HB2	2.07	0.54
1:B:7:ILE:CG2	1:B:9:LYS:HE3	2.38	0.54
1:B:5:ILE:HA	1:B:36:PRO:HA	1.88	0.53
1:B:11:GLY:CA	1:B:16:PRO:HG3	2.38	0.53
1:A:5:ILE:HG13	1:A:40:GLU:OE2	2.07	0.53
1:B:214:ARG:NH1	3:B:302:BU1:H11	2.24	0.53
3:B:302:BU1:H12	6:B:407:HOH:O	2.08	0.53
1:A:233:THR:O	1:A:236:GLU:HB2	2.09	0.53
1:B:29:ILE:O	1:B:101:LEU:N	2.31	0.53
1:A:30:TRP:CZ2	1:A:112:ILE:HG23	2.43	0.53
1:B:211:LYS:HG3	1:B:214:ARG:HH12	1.73	0.53
1:B:134:PHE:HD2	6:B:436:HOH:O	1.92	0.53
1:A:87:ILE:N	1:A:87:ILE:HD12	2.24	0.53
1:A:96:ILE:HG12	1:A:101:LEU:HD22	1.91	0.52
1:A:170:ASP:HB3	1:A:173:VAL:HG23	1.90	0.52
1:A:83:PHE:CE1	1:A:110:LYS:HB2	2.43	0.52
1:A:5:ILE:HD13	1:A:36:PRO:HB3	1.91	0.52
1:A:92:LEU:HB3	1:A:109:ILE:HD11	1.91	0.52
1:B:15:GLU:CD	1:B:124:PRO:HG3	2.30	0.52
1:B:222:TYR:HD1	1:B:225:LEU:HD12	1.74	0.52

Continued on next page...

Continued from previous page...

Atom-1	Atom-2	Interatomic distance (Å)	Clash overlap (Å)
1:B:96:ILE:HD11	1:B:136:LEU:HD22	1.91	0.52
1:A:118:LEU:C	1:A:118:LEU:HD23	2.30	0.52
1:A:226:GLN:O	1:A:229:ASP:HB2	2.09	0.52
1:B:184:LEU:HD21	1:B:234:TYR:CB	2.40	0.52
1:A:11:GLY:O	1:A:14:VAL:N	2.43	0.52
1:B:211:LYS:HA	1:B:214:ARG:NH2	2.24	0.52
1:A:13:ILE:CG2	1:A:14:VAL:HG23	2.40	0.52
1:A:128:PHE:CZ	3:A:319:BU1:H12	2.45	0.52
1:B:4:VAL:HG21	1:B:34:TYR:CD2	2.44	0.52
1:B:5:ILE:HD13	1:B:37:LYS:CE	2.39	0.52
1:B:59:LEU:HG	1:B:104:ILE:HD11	1.91	0.51
1:A:21:ILE:HG23	1:A:47:LYS:HZ3	1.68	0.51
1:B:128:PHE:O	1:B:131:GLY:N	2.43	0.51
1:A:5:ILE:CB	1:A:36:PRO:HA	2.40	0.51
1:B:12:SER:O	1:B:14:VAL:HA	2.10	0.51
1:B:16:PRO:O	1:B:17:LYS:HG3	2.11	0.51
1:B:58:GLY:N	1:B:95:TYR:OH	2.41	0.51
1:B:134:PHE:O	1:B:137:TYR:HB3	2.10	0.51
1:B:72:ASP:O	1:B:97:LYS:HG3	2.11	0.51
1:B:211:LYS:HG3	1:B:214:ARG:CZ	2.40	0.51
1:A:171:ARG:NH1	1:A:171:ARG:HB2	2.26	0.50
1:B:75:LEU:C	1:B:76:ILE:HD12	2.31	0.50
1:A:15:GLU:CB	1:A:16:PRO:CD	2.89	0.50
1:A:174:MET:HG3	1:A:242:MET:HE1	1.92	0.50
1:A:192:ILE:O	1:A:195:ARG:HB3	2.10	0.50
1:A:81:PRO:HG2	1:A:146:SER:CB	2.41	0.50
1:B:12:SER:CB	1:B:27:ARG:HG3	2.41	0.50
1:A:17:LYS:O	1:A:17:LYS:HG2	2.12	0.50
1:A:169[B]:TYR:CD1	1:A:170:ASP:N	2.71	0.50
1:B:92:LEU:O	1:B:92:LEU:CD1	2.59	0.50
1:B:96:ILE:HG23	1:B:132:ILE:HD12	1.92	0.50
1:A:18:LEU:CD2	1:A:47:LYS:HD2	2.41	0.50
1:B:5:ILE:HG23	1:B:36:PRO:HA	1.93	0.50
1:B:18:LEU:HB2	1:B:21:ILE:HG21	1.94	0.50
1:B:101:LEU:HD13	1:B:101:LEU:C	2.32	0.50
1:B:32:ASP:OD1	1:B:112:ILE:HD13	2.12	0.50
1:A:125:ARG:CD	1:A:126:ILE:HG12	2.41	0.50
1:A:145:ARG:NH2	1:B:152:MET:HE2	2.27	0.50
1:B:2:ILE:HD12	1:B:2:ILE:H	1.77	0.50
1:A:72:ASP:OD2	1:A:97:LYS:HE3	2.12	0.49
1:A:118:LEU:O	1:A:122:LYS:N	2.33	0.49

Continued on next page...

Continued from previous page...

Atom-1	Atom-2	Interatomic distance (Å)	Clash overlap (Å)
1:A:185:VAL:HA	4:A:318:PGO:H2	1.93	0.49
1:A:249:GLU:O	1:A:250:ASN:CB	2.60	0.49
1:B:14:VAL:O	1:B:15:GLU:HG2	2.11	0.49
1:B:74:TYR:O	1:B:95:TYR:HA	2.12	0.49
1:B:101:LEU:HB2	1:B:132:ILE:HD11	1.94	0.49
1:A:135:LEU:O	1:A:139:ILE:HG13	2.12	0.49
1:B:226[B]:GLN:HG3	1:B:230:MET:CE	2.42	0.49
1:B:238:LEU:HD23	1:B:241:MET:CE	2.43	0.49
1:B:5:ILE:HG22	1:B:40:GLU:OE2	2.13	0.49
1:A:17:LYS:HE2	1:A:20:GLU:HB2	1.93	0.49
1:A:74:TYR:CE2	1:A:207:PRO:HG2	2.47	0.49
1:B:167:ALA:HB1	6:B:437:HOH:O	2.13	0.49
1:B:168:GLY:O	1:B:169:TYR:CD2	2.66	0.49
1:A:128:PHE:CE1	3:A:319:BU1:H12	2.48	0.49
1:A:92:LEU:HD12	1:A:92:LEU:N	2.28	0.49
1:A:117:LYS:HB2	1:A:117:LYS:HE3	1.68	0.49
1:B:140:LEU:HD22	1:B:217:PHE:HE1	1.77	0.48
1:A:20:GLU:O	1:A:21:ILE:HG22	2.13	0.48
1:B:169:TYR:N	1:B:248:LEU:HB3	2.28	0.48
1:A:54:ASP:OD2	3:A:309:BU1:H21	2.14	0.48
1:A:126:ILE:HG13	1:A:126:ILE:O	2.14	0.48
1:A:151:LEU:HD13	1:A:227:LEU:HD22	1.95	0.48
1:A:22:SER:O	1:A:26:TYR:CE1	2.66	0.48
1:A:195:ARG:O	1:A:199:VAL:HG23	2.14	0.48
1:A:123:LYS:HB3	1:A:124:PRO:CD	2.43	0.48
6:A:412:HOH:O	1:B:110:LYS:NZ	2.37	0.48
1:B:65:PRO:CG	1:B:79:LYS:HG2	2.44	0.48
2:B:303:HEZ:H41	6:B:438:HOH:O	2.14	0.48
1:A:37:LYS:O	1:A:40:GLU:N	2.47	0.48
1:B:11:GLY:HA3	1:B:26:TYR:HD2	1.79	0.48
1:B:25:ASP:HB2	1:B:26:TYR:CE1	2.48	0.48
1:A:5:ILE:HG21	1:A:37:LYS:HG2	1.95	0.47
1:A:65:PRO:HA	1:A:77:ILE:HB	1.97	0.47
1:B:211:LYS:HG3	1:B:214:ARG:NH1	2.28	0.47
1:B:211:LYS:CG	1:B:214:ARG:HH12	2.26	0.47
1:A:143:ILE:O	1:A:146:SER:N	2.47	0.47
1:A:171:ARG:HB2	1:A:171:ARG:HH11	1.80	0.47
1:B:212:GLU:O	1:B:215:GLU:HB2	2.13	0.47
1:A:133:GLY:HA3	1:A:213:ASP:OD2	2.15	0.47
1:A:157:GLU:O	1:A:161:LEU:HB2	2.14	0.47
1:B:95:TYR:N	1:B:95:TYR:CD1	2.82	0.47

Continued on next page...

Continued from previous page...

Atom-1	Atom-2	Interatomic distance (Å)	Clash overlap (Å)
1:A:110:LYS:NZ	6:A:407:HOH:O	2.48	0.47
1:B:48:ILE:HG13	1:B:50:ILE:HB	1.96	0.47
1:B:109:ILE:HG22	1:B:112:ILE:H	1.80	0.47
1:B:238:LEU:HA	1:B:241:MET:HE2	1.95	0.47
1:A:5:ILE:CG1	1:A:40:GLU:CD	2.82	0.47
1:B:13:ILE:HB	1:B:27:ARG:HE	1.80	0.47
1:A:5:ILE:HD13	1:A:36:PRO:CB	2.45	0.47
1:A:126:ILE:HA	1:A:127:VAL:HA	1.47	0.47
1:A:131:GLY:O	1:A:132:ILE:HG22	2.15	0.47
1:B:169:TYR:H	1:B:248:LEU:HB3	1.80	0.47
1:A:18:LEU:HD13	1:A:19:ASP:HB3	1.96	0.47
1:A:71:GLU:HB3	3:A:309:BU1:H41	1.96	0.47
1:A:5:ILE:CD1	1:A:36:PRO:HA	2.44	0.47
1:A:83:PHE:CZ	1:A:110:LYS:HB2	2.51	0.47
1:B:7:ILE:HG22	1:B:9:LYS:HD2	1.97	0.47
1:B:17:LYS:C	1:B:18:LEU:CG	2.83	0.47
1:A:212:GLU:HA	1:A:215:GLU:OE1	2.15	0.46
1:B:60:ASP:HB3	1:B:63:GLU:CG	2.45	0.46
1:A:92:LEU:HB3	1:A:109:ILE:CD1	2.46	0.46
1:B:23:PHE:HB2	1:B:29:ILE:CG1	2.45	0.46
1:B:71:GLU:HG3	6:B:424:HOH:O	2.14	0.46
1:A:84:GLU:HB2	1:A:86:ASP:O	2.15	0.46
1:A:126:ILE:HB	1:A:127:VAL:CG1	2.45	0.46
1:B:4:VAL:HG21	1:B:34:TYR:CE2	2.50	0.46
1:A:51:SER:O	1:A:54:ASP:N	2.49	0.46
1:B:140:LEU:HB3	1:B:220:LEU:HD21	1.96	0.46
1:A:5:ILE:CG1	1:A:36:PRO:HA	2.46	0.46
1:A:13:ILE:HG13	2:A:312:HEZ:C6	2.43	0.46
1:A:36:PRO:CG	1:A:59:LEU:HD11	2.46	0.46
1:A:119:ILE:HD12	1:A:122:LYS:HE3	1.98	0.46
1:A:154:LEU:HD12	1:A:180:LEU:HD22	1.98	0.46
1:B:5:ILE:CG2	1:B:37:LYS:H	2.25	0.46
1:B:76:ILE:HD12	1:B:76:ILE:N	2.30	0.46
1:B:218:GLU:HG2	1:B:222:TYR:CE2	2.51	0.46
1:A:70:ASP:OD1	1:A:73:PHE:N	2.49	0.46
1:B:5:ILE:CG2	1:B:40:GLU:HB2	2.45	0.46
1:B:138:HIS:O	1:B:142:GLU:HG2	2.15	0.46
1:A:28:LEU:HD23	1:A:28:LEU:N	2.30	0.46
1:A:71:GLU:O	1:A:73:PHE:CD2	2.68	0.46
1:A:237:VAL:HG21	3:A:305:BU1:H32	1.98	0.46
1:A:132:ILE:O	1:A:132:ILE:CG1	2.65	0.45

Continued on next page...

Continued from previous page...

Atom-1	Atom-2	Interatomic distance (Å)	Clash overlap (Å)
2:A:312:HEZ:H31	6:A:444:HOH:O	2.16	0.45
1:B:5:ILE:HD13	1:B:37:LYS:HE3	1.98	0.45
1:B:21:ILE:N	1:B:47:LYS:NZ	2.60	0.45
1:A:197:VAL:O	1:A:201:LEU:CD1	2.61	0.45
1:B:7:ILE:HA	1:B:32:ASP:O	2.16	0.45
1:B:13:ILE:CG1	1:B:14:VAL:HG13	2.37	0.45
1:B:144:THR:OG1	1:B:220:LEU:HD11	2.16	0.45
1:B:26:TYR:CD1	1:B:26:TYR:N	2.83	0.45
1:A:73:PHE:CD1	1:A:73:PHE:C	2.90	0.45
2:B:303:HEZ:H62	2:B:305:HEZ:C1	2.41	0.45
1:A:4:VAL:HG23	1:A:35:ASP:HB3	1.99	0.45
1:A:108:LYS:HD3	1:A:109:ILE:H	1.80	0.45
1:A:5:ILE:HG21	1:A:37:LYS:NZ	2.32	0.45
1:B:13:ILE:HG22	1:B:27:ARG:HH11	1.75	0.45
1:A:18:LEU:HA	1:A:21:ILE:CG2	2.47	0.45
1:B:32:ASP:HA	1:B:103:THR:OG1	2.17	0.45
1:B:79:LYS:HB2	1:B:194:ASN:HD21	1.82	0.45
1:B:202:LYS:HE2	1:B:221:TYR:CG	2.52	0.45
1:B:28:LEU:HD11	1:B:131:GLY:HA3	1.99	0.45
1:A:14:VAL:O	1:A:15:GLU:CG	2.62	0.45
1:B:71:GLU:OE2	2:B:305:HEZ:H61	2.17	0.45
1:B:101:LEU:C	1:B:101:LEU:CD1	2.85	0.45
1:A:13:ILE:CD1	1:A:27:ARG:HH12	2.30	0.44
1:A:81:PRO:HG2	1:A:146:SER:HB2	1.99	0.44
1:B:14:VAL:C	1:B:15:GLU:HG2	2.38	0.44
1:A:58:GLY:HA3	1:A:104:ILE:CG2	2.48	0.44
1:B:100:LEU:HD12	1:B:101:LEU:N	2.32	0.44
1:B:198:LEU:HD11	1:B:220:LEU:HG	2.00	0.44
1:B:223:ASP:O	1:B:226[B]:GLN:HB3	2.17	0.44
1:A:118:LEU:HD23	1:A:119:ILE:N	2.32	0.44
1:B:211:LYS:O	1:B:215:GLU:HG3	2.17	0.44
1:B:15:GLU:N	1:B:16:PRO:HD3	2.33	0.44
1:B:98:ASN:N	6:B:435:HOH:O	2.50	0.44
1:A:151:LEU:HD12	1:A:227:LEU:HD22	1.97	0.44
1:A:241:MET:O	1:A:244:ILE:HB	2.17	0.44
1:A:27:ARG:HB2	1:A:28:LEU:HD23	1.99	0.44
1:B:249:GLU:OE1	1:B:249:GLU:HA	2.17	0.44
1:A:13:ILE:CG1	2:A:312:HEZ:H61	2.44	0.44
1:A:15:GLU:CB	1:A:16:PRO:HD2	2.48	0.44
1:A:58:GLY:HA3	1:A:104:ILE:HG23	2.00	0.44
1:A:78:TYR:OH	1:A:198:LEU:HD11	2.18	0.44

Continued on next page...

Continued from previous page...

Atom-1	Atom-2	Interatomic distance (Å)	Clash overlap (Å)
1:B:155:GLU:HB2	1:B:234:TYR:CZ	2.53	0.44
1:A:226:GLN:O	1:A:230:MET:HG3	2.18	0.44
1:B:13:ILE:CG2	1:B:27:ARG:NH1	2.68	0.44
1:B:17:LYS:C	1:B:18:LEU:HG	2.25	0.44
1:B:65:PRO:HA	1:B:77:ILE:HB	1.99	0.44
1:A:78:TYR:HB3	1:A:92:LEU:CD1	2.47	0.43
1:A:230:MET:HB3	1:A:234:TYR:CZ	2.52	0.43
1:B:41:LEU:HD12	1:B:41:LEU:O	2.17	0.43
1:B:59:LEU:HG	1:B:104:ILE:CD1	2.47	0.43
1:B:83:PHE:CD1	1:B:83:PHE:N	2.85	0.43
1:A:13:ILE:CG2	1:A:125:ARG:H	2.31	0.43
1:A:64:ILE:HG22	1:A:65:PRO:O	2.19	0.43
1:A:145:ARG:NH2	1:B:152:MET:CE	2.81	0.43
1:A:180:LEU:O	1:A:184:LEU:HD22	2.17	0.43
1:A:213:ASP:O	1:A:217:PHE:CD2	2.71	0.43
1:B:9:LYS:CD	1:B:9:LYS:N	2.81	0.43
1:A:18:LEU:HD13	1:A:19:ASP:N	2.32	0.43
1:A:170:ASP:HB3	1:A:173:VAL:CG2	2.47	0.43
2:A:303:HEZ:H52	2:A:303:HEZ:C1	2.46	0.43
1:B:69:GLU:CD	1:B:70:ASP:H	2.21	0.43
1:B:79:LYS:CB	1:B:190:SER:HB3	2.49	0.43
1:A:137:TYR:O	1:A:141:ASN:N	2.39	0.43
1:B:23:PHE:HB2	1:B:29:ILE:HD11	2.00	0.43
1:A:127:VAL:HG23	1:A:127:VAL:O	2.18	0.43
1:A:213:ASP:HB3	1:A:217:PHE:CE2	2.54	0.43
1:B:5:ILE:HG23	1:B:37:LYS:N	2.31	0.43
1:B:65:PRO:HA	1:B:77:ILE:O	2.19	0.43
1:B:192:ILE:HG12	1:B:228:ILE:HD13	2.00	0.43
1:B:6:ALA:C	1:B:7:ILE:HD12	2.39	0.43
1:A:12:SER:HA	1:A:13:ILE:HA	1.71	0.43
1:A:15:GLU:HA	1:A:16:PRO:HD3	1.64	0.43
1:A:170:ASP:C	1:A:172:GLU:N	2.71	0.43
1:B:110:LYS:HE3	6:B:425:HOH:O	2.18	0.43
1:B:123:LYS:HB3	1:B:124:PRO:CD	2.49	0.43
1:B:189:LYS:HE2	6:B:415:HOH:O	2.18	0.43
1:A:154:LEU:HD13	1:A:184:LEU:HD13	1.99	0.43
1:B:123:LYS:HB3	1:B:124:PRO:HD2	2.01	0.43
1:A:18:LEU:HD22	1:A:47:LYS:HD2	2.02	0.42
1:A:118:LEU:HD22	1:A:119:ILE:HD13	2.01	0.42
1:B:82:LEU:O	1:B:88:THR:N	2.46	0.42
1:B:94:ILE:HG21	1:B:136:LEU:CD1	2.47	0.42

Continued on next page...

Continued from previous page...

Atom-1	Atom-2	Interatomic distance (Å)	Clash overlap (Å)
1:B:15:GLU:OE2	1:B:124:PRO:HG3	2.19	0.42
1:A:5:ILE:HA	1:A:34:TYR:O	2.19	0.42
1:A:13:ILE:HD12	1:A:125:ARG:CB	2.50	0.42
1:A:76:ILE:N	1:A:76:ILE:HD12	2.33	0.42
1:B:57:ILE:O	1:B:63:GLU:HG3	2.20	0.42
1:B:122:LYS:HD2	1:B:126:ILE:CG1	2.48	0.42
1:A:21:ILE:HG12	1:A:47:LYS:HZ3	1.85	0.42
1:B:7:ILE:HG13	1:B:33:CYS:HA	2.01	0.42
1:B:32:ASP:CB	1:B:116:HIS:NE2	2.82	0.42
1:B:61:GLU:HA	1:B:91:SER:HB2	2.01	0.42
1:B:216:ASN:O	1:B:219:ASP:HB2	2.19	0.42
1:B:7:ILE:HG22	1:B:9:LYS:CD	2.50	0.42
1:B:30:TRP:HZ2	1:B:112:ILE:HG12	1.84	0.42
1:B:96:ILE:HG23	1:B:132:ILE:CD1	2.49	0.42
1:B:221:TYR:CZ	1:B:225:LEU:HD11	2.54	0.42
1:A:108:LYS:HE2	1:A:109:ILE:H	1.85	0.42
1:A:199:VAL:O	1:A:202:LYS:HG2	2.19	0.42
1:A:215:GLU:HG3	1:A:215:GLU:H	1.60	0.42
1:B:169:TYR:O	1:B:169:TYR:HD1	2.00	0.42
1:A:30:TRP:HE1	1:A:103:THR:HG23	1.85	0.41
1:B:118:LEU:C	1:B:118:LEU:HD23	2.40	0.41
1:A:15:GLU:HB3	1:A:16:PRO:HD2	2.01	0.41
1:B:11:GLY:N	1:B:16:PRO:CG	2.83	0.41
1:B:67:VAL:HA	1:B:75:LEU:O	2.20	0.41
1:A:221:TYR:CZ	1:A:225:LEU:HD11	2.55	0.41
1:B:202:LYS:HE2	1:B:221:TYR:CD2	2.55	0.41
1:A:92:LEU:O	1:A:92:LEU:CD1	2.68	0.41
1:A:163:ASP:O	1:A:166:LEU:N	2.42	0.41
1:A:184:LEU:HD23	1:A:238:LEU:HD12	2.02	0.41
1:A:238:LEU:HD23	1:A:241:MET:HE2	2.03	0.41
1:B:75:LEU:HD22	1:B:95:TYR:CE2	2.55	0.41
1:A:169[B]:TYR:CD2	1:A:170:ASP:N	2.77	0.41
1:B:78:TYR:CZ	1:B:194:ASN:HB3	2.56	0.41
1:B:184:LEU:CD2	1:B:238:LEU:HD12	2.51	0.41
1:A:147:TYR:OH	1:A:190:SER:HB3	2.20	0.41
1:B:48:ILE:HG13	1:B:50:ILE:H	1.86	0.41
1:A:49:GLY:O	2:A:311:HEZ:H32	2.20	0.41
1:B:182:LYS:NZ	1:B:186:TYR:HE1	2.18	0.41
1:B:195:ARG:NH1	6:B:406:HOH:O	2.52	0.41
1:A:119:ILE:CD1	1:A:122:LYS:HE3	2.51	0.41
1:B:13:ILE:CA	1:B:14:VAL:HG13	2.47	0.41

Continued on next page...

Continued from previous page...

Atom-1	Atom-2	Interatomic distance (Å)	Clash overlap (Å)
1:B:28:LEU:CD1	1:B:131:GLY:HA3	2.51	0.41
1:B:55:LEU:HD23	1:B:55:LEU:HA	1.94	0.41
1:B:59:LEU:HD22	6:B:442:HOH:O	2.20	0.41
1:A:74:TYR:HE2	1:A:207:PRO:HG2	1.86	0.41
1:A:170:ASP:O	1:A:173:VAL:N	2.54	0.41
1:A:199:VAL:HA	1:A:202:LYS:HG2	2.03	0.41
1:A:235:ARG:HB2	4:A:318:PGO:H11	2.02	0.41
1:A:38:ASP:HA	1:A:41:LEU:HB3	2.03	0.40
1:A:72:ASP:CG	1:A:72:ASP:O	2.59	0.40
1:B:13:ILE:HA	1:B:14:VAL:HA	1.76	0.40
1:B:15:GLU:N	1:B:16:PRO:CD	2.84	0.40
1:B:150:ILE:HD13	1:B:187:PHE:HZ	1.86	0.40
1:A:19:ASP:O	1:A:20:GLU:HG2	2.21	0.40
1:A:19:ASP:OD1	1:A:43:LYS:HE2	2.20	0.40
1:B:118:LEU:O	1:B:122:LYS:N	2.54	0.40
1:B:15:GLU:OE1	1:B:124:PRO:HG3	2.21	0.40
1:B:32:ASP:HB3	1:B:116:HIS:NE2	2.37	0.40
2:B:309:HEZ:H41	3:B:312:BU1:H41	2.01	0.40
1:A:123:LYS:N	1:A:123:LYS:HE3	2.36	0.40
1:A:149:ARG:HG2	1:B:149:ARG:HG2	2.02	0.40
1:A:154:LEU:HD13	1:A:184:LEU:CD1	2.51	0.40
1:A:172:GLU:H	1:A:172:GLU:HG3	1.65	0.40
1:B:8:ALA:HB3	1:B:32:ASP:HB3	2.04	0.40
1:B:232:ALA:O	1:B:235:ARG:HB2	2.21	0.40

All (1) symmetry-related close contacts are listed below. The label for Atom-2 includes the symmetry operator and encoded unit-cell translations to be applied.

Atom-1	Atom-2	Interatomic distance (Å)	Clash overlap (Å)
1:A:205:TYR:OH	1:B:60:ASP:OD1[6_545]	2.19	0.01

5.3 Torsion angles [i](#)

5.3.1 Protein backbone [i](#)

In the following table, the Percentiles column shows the percent Ramachandran outliers of the chain as a percentile score with respect to all X-ray entries followed by that with respect to entries of similar resolution.

The Analysed column shows the number of residues for which the backbone conformation was

analysed, and the total number of residues.

Mol	Chain	Analysed	Favoured	Allowed	Outliers	Percentiles	
1	A	249/280 (89%)	231 (93%)	13 (5%)	5 (2%)	7	12
1	B	250/280 (89%)	240 (96%)	9 (4%)	1 (0%)	34	54
All	All	499/560 (89%)	471 (94%)	22 (4%)	6 (1%)	15	24

All (6) Ramachandran outliers are listed below:

Mol	Chain	Res	Type
1	A	169[A]	TYR
1	A	169[B]	TYR
1	B	132	ILE
1	A	5	ILE
1	A	14	VAL
1	A	132	ILE

5.3.2 Protein sidechains [i](#)

In the following table, the Percentiles column shows the percent sidechain outliers of the chain as a percentile score with respect to all X-ray entries followed by that with respect to entries of similar resolution.

The Analysed column shows the number of residues for which the sidechain conformation was analysed, and the total number of residues.

Mol	Chain	Analysed	Rotameric	Outliers	Percentiles	
1	A	235/262 (90%)	203 (86%)	32 (14%)	3	7
1	B	236/262 (90%)	210 (89%)	26 (11%)	6	12
All	All	471/524 (90%)	413 (88%)	58 (12%)	4	9

All (58) residues with a non-rotameric sidechain are listed below:

Mol	Chain	Res	Type
1	A	2	ILE
1	A	3	THR
1	A	4	VAL
1	A	5	ILE
1	A	9	LYS
1	A	14	VAL
1	A	18	LEU
1	A	19	ASP

Continued on next page...

Continued from previous page...

Mol	Chain	Res	Type
1	A	21	ILE
1	A	24	GLU
1	A	26	TYR
1	A	28	LEU
1	A	47	LYS
1	A	69	GLU
1	A	70	ASP
1	A	83	PHE
1	A	86	ASP
1	A	92	LEU
1	A	104	ILE
1	A	108	LYS
1	A	110	LYS
1	A	123	LYS
1	A	125	ARG
1	A	128	PHE
1	A	132	ILE
1	A	149	ARG
1	A	161	LEU
1	A	170	ASP
1	A	171	ARG
1	A	184	LEU
1	A	246	LEU
1	A	248	LEU
1	B	2	ILE
1	B	14	VAL
1	B	18	LEU
1	B	20	GLU
1	B	28	LEU
1	B	33	CYS
1	B	69	GLU
1	B	70	ASP
1	B	72	ASP
1	B	83	PHE
1	B	92	LEU
1	B	95	TYR
1	B	101	LEU
1	B	108	LYS
1	B	123	LYS
1	B	130	ARG
1	B	132	ILE
1	B	159	GLU

Continued on next page...

Continued from previous page...

Mol	Chain	Res	Type
1	B	170	ASP
1	B	181	ARG
1	B	201	LEU
1	B	209	THR
1	B	211	LYS
1	B	245	THR
1	B	246	LEU
1	B	249	GLU

Sometimes sidechains can be flipped to improve hydrogen bonding and reduce clashes. There are no such sidechains identified.

5.3.3 RNA [i](#)

There are no RNA molecules in this entry.

5.4 Non-standard residues in protein, DNA, RNA chains [i](#)

There are no non-standard protein/DNA/RNA residues in this entry.

5.5 Carbohydrates [i](#)

There are no monosaccharides in this entry.

5.6 Ligand geometry [i](#)

Of 32 ligands modelled in this entry, 3 are monoatomic - leaving 29 for Mogul analysis.

In the following table, the Counts columns list the number of bonds (or angles) for which Mogul statistics could be retrieved, the number of bonds (or angles) that are observed in the model and the number of bonds (or angles) that are defined in the Chemical Component Dictionary. The Link column lists molecule types, if any, to which the group is linked. The Z score for a bond length (or angle) is the number of standard deviations the observed value is removed from the expected value. A bond length (or angle) with $|Z| > 2$ is considered an outlier worth inspection. RMSZ is the root-mean-square of all Z scores of the bond lengths (or angles).

Mol	Type	Chain	Res	Link	Bond lengths			Bond angles		
					Counts	RMSZ	$\# Z > 2$	Counts	RMSZ	$\# Z > 2$
4	PGO	A	316	-	3,4,4	0.88	0	1,4,4	0.11	0
4	PGO	B	304	-	3,4,4	0.90	0	1,4,4	0.00	0
2	HEZ	A	304	-	7,7,7	0.48	0	6,6,6	0.60	0

Mol	Type	Chain	Res	Link	Bond lengths			Bond angles		
					Counts	RMSZ	# Z > 2	Counts	RMSZ	# Z > 2
3	BU1	A	308	-	5,5,5	0.48	0	4,4,4	0.80	0
2	HEZ	A	311	-	7,7,7	0.44	0	6,6,6	0.77	0
3	BU1	B	312	-	5,5,5	0.46	0	4,4,4	0.83	0
2	HEZ	A	301	-	7,7,7	0.42	0	6,6,6	0.74	0
2	HEZ	B	308	-	7,7,7	0.45	0	6,6,6	0.69	0
2	HEZ	B	305	-	7,7,7	0.46	0	6,6,6	0.63	0
2	HEZ	A	302	-	7,7,7	0.42	0	6,6,6	0.79	0
3	BU1	A	319	-	5,5,5	0.49	0	4,4,4	0.72	0
2	HEZ	A	310	-	7,7,7	0.42	0	6,6,6	0.71	0
4	PGO	A	317	-	3,4,4	0.95	0	1,4,4	0.21	0
2	HEZ	A	303	-	7,7,7	0.49	0	6,6,6	0.62	0
4	PGO	A	307	-	3,4,4	0.88	0	1,4,4	0.14	0
4	PGO	B	306	-	3,4,4	0.87	0	1,4,4	0.12	0
2	HEZ	B	309	-	7,7,7	0.48	0	6,6,6	0.58	0
3	BU1	B	302	-	5,5,5	0.53	0	4,4,4	0.60	0
2	HEZ	A	312	-	7,7,7	0.47	0	6,6,6	0.70	0
3	BU1	A	309	-	5,5,5	0.51	0	4,4,4	0.61	0
4	PGO	A	320	-	3,4,4	0.97	0	1,4,4	0.11	0
2	HEZ	A	306	-	7,7,7	0.44	0	6,6,6	0.71	0
4	PGO	B	310	-	3,4,4	0.88	0	1,4,4	0.09	0
4	PGO	A	318	-	3,4,4	0.85	0	1,4,4	0.31	0
2	HEZ	B	301	-	7,7,7	0.50	0	6,6,6	0.56	0
3	BU1	A	305	-	5,5,5	0.48	0	4,4,4	0.69	0
4	PGO	A	315	-	3,4,4	0.87	0	1,4,4	0.26	0
2	HEZ	B	303	-	7,7,7	0.46	0	6,6,6	0.65	0
4	PGO	B	311	-	3,4,4	0.83	0	1,4,4	0.08	0

In the following table, the Chirals column lists the number of chiral outliers, the number of chiral centers analysed, the number of these observed in the model and the number defined in the Chemical Component Dictionary. Similar counts are reported in the Torsion and Rings columns. '-' means no outliers of that kind were identified.

Mol	Type	Chain	Res	Link	Chirals	Torsions	Rings
4	PGO	A	316	-	-	1/2/2/2	-
4	PGO	B	304	-	-	2/2/2/2	-
2	HEZ	A	304	-	-	2/5/5/5	-
3	BU1	A	308	-	-	1/3/3/3	-
2	HEZ	A	311	-	-	1/5/5/5	-
3	BU1	B	312	-	-	1/3/3/3	-
2	HEZ	A	301	-	-	3/5/5/5	-
2	HEZ	B	308	-	-	5/5/5/5	-
2	HEZ	B	305	-	-	3/5/5/5	-

Continued on next page...

Continued from previous page...

Mol	Type	Chain	Res	Link	Chirals	Torsions	Rings
2	HEZ	A	302	-	-	2/5/5/5	-
3	BU1	A	319	-	-	1/3/3/3	-
2	HEZ	A	310	-	-	3/5/5/5	-
4	PGO	A	317	-	-	0/2/2/2	-
2	HEZ	A	303	-	-	0/5/5/5	-
4	PGO	A	307	-	-	2/2/2/2	-
4	PGO	B	306	-	-	2/2/2/2	-
2	HEZ	B	309	-	-	1/5/5/5	-
3	BU1	B	302	-	-	1/3/3/3	-
2	HEZ	A	312	-	-	3/5/5/5	-
3	BU1	A	309	-	-	1/3/3/3	-
4	PGO	A	320	-	-	2/2/2/2	-
2	HEZ	A	306	-	-	4/5/5/5	-
4	PGO	B	310	-	-	2/2/2/2	-
4	PGO	A	318	-	-	2/2/2/2	-
2	HEZ	B	301	-	-	3/5/5/5	-
3	BU1	A	305	-	-	1/3/3/3	-
4	PGO	A	315	-	-	2/2/2/2	-
2	HEZ	B	303	-	-	3/5/5/5	-
4	PGO	B	311	-	-	2/2/2/2	-

There are no bond length outliers.

There are no bond angle outliers.

There are no chirality outliers.

All (56) torsion outliers are listed below:

Mol	Chain	Res	Type	Atoms
4	A	307	PGO	O1-C1-C2-C3
4	A	307	PGO	O1-C1-C2-O2
4	A	315	PGO	O1-C1-C2-O2
4	A	316	PGO	O1-C1-C2-C3
4	A	318	PGO	O1-C1-C2-C3
4	A	318	PGO	O1-C1-C2-O2
4	A	320	PGO	O1-C1-C2-C3
4	A	320	PGO	O1-C1-C2-O2
4	B	304	PGO	O1-C1-C2-C3
4	B	304	PGO	O1-C1-C2-O2
4	B	306	PGO	O1-C1-C2-O2

Continued on next page...

Continued from previous page...

Mol	Chain	Res	Type	Atoms
4	B	310	PGO	O1-C1-C2-O2
4	B	311	PGO	O1-C1-C2-C3
4	B	311	PGO	O1-C1-C2-O2
2	A	306	HEZ	C2-C3-C4-C5
3	A	305	BU1	C2-C3-C4-O6
3	A	319	BU1	C2-C3-C4-O6
2	B	305	HEZ	C2-C3-C4-C5
2	B	301	HEZ	C2-C3-C4-C5
3	A	308	BU1	C2-C3-C4-O6
3	B	302	BU1	C2-C3-C4-O6
2	A	301	HEZ	C2-C3-C4-C5
2	A	304	HEZ	C3-C4-C5-C6
2	A	312	HEZ	C3-C4-C5-C6
2	A	306	HEZ	C3-C4-C5-C6
2	A	310	HEZ	C1-C2-C3-C4
2	A	312	HEZ	C2-C3-C4-C5
2	A	304	HEZ	C1-C2-C3-C4
2	B	305	HEZ	C1-C2-C3-C4
2	B	301	HEZ	C1-C2-C3-C4
2	B	309	HEZ	C3-C4-C5-C6
2	A	301	HEZ	O1-C1-C2-C3
2	A	312	HEZ	C4-C5-C6-O6
2	B	303	HEZ	O1-C1-C2-C3
2	A	310	HEZ	C4-C5-C6-O6
2	B	303	HEZ	C4-C5-C6-O6
2	B	305	HEZ	O1-C1-C2-C3
2	B	308	HEZ	C3-C4-C5-C6
3	A	309	BU1	C2-C3-C4-O6
2	A	302	HEZ	C1-C2-C3-C4
2	A	302	HEZ	C3-C4-C5-C6
2	A	310	HEZ	C2-C3-C4-C5
2	A	306	HEZ	C4-C5-C6-O6
2	B	308	HEZ	O1-C1-C2-C3
2	B	303	HEZ	C2-C3-C4-C5
2	B	308	HEZ	C1-C2-C3-C4
2	B	308	HEZ	C2-C3-C4-C5
4	A	315	PGO	O1-C1-C2-C3
4	B	306	PGO	O1-C1-C2-C3
4	B	310	PGO	O1-C1-C2-C3
2	B	308	HEZ	C4-C5-C6-O6
2	A	306	HEZ	C1-C2-C3-C4
2	B	301	HEZ	C4-C5-C6-O6

Continued on next page...

Continued from previous page...

Mol	Chain	Res	Type	Atoms
3	B	312	BU1	O5-C1-C2-C3
2	A	301	HEZ	C3-C4-C5-C6
2	A	311	HEZ	C4-C5-C6-O6

There are no ring outliers.

21 monomers are involved in 47 short contacts:

Mol	Chain	Res	Type	Clashes	Symm-Clashes
4	A	316	PGO	1	0
2	A	304	HEZ	1	0
2	A	311	HEZ	3	0
3	B	312	BU1	1	0
2	B	308	HEZ	1	0
2	B	305	HEZ	3	0
3	A	319	BU1	2	0
2	A	310	HEZ	2	0
4	A	317	PGO	2	0
2	A	303	HEZ	7	0
4	B	306	PGO	1	0
2	B	309	HEZ	1	0
3	B	302	BU1	4	0
2	A	312	HEZ	4	0
3	A	309	BU1	6	0
4	A	320	PGO	2	0
2	A	306	HEZ	2	0
4	A	318	PGO	4	0
3	A	305	BU1	4	0
4	A	315	PGO	1	0
2	B	303	HEZ	3	0

5.7 Other polymers [i](#)

There are no such residues in this entry.

5.8 Polymer linkage issues [i](#)

There are no chain breaks in this entry.

6 Fit of model and data [i](#)

6.1 Protein, DNA and RNA chains [i](#)

In the following table, the column labelled ‘#RSRZ > 2’ contains the number (and percentage) of RSRZ outliers, followed by percent RSRZ outliers for the chain as percentile scores relative to all X-ray entries and entries of similar resolution. The OWAB column contains the minimum, median, 95th percentile and maximum values of the occupancy-weighted average B-factor per residue. The column labelled ‘Q < 0.9’ lists the number of (and percentage) of residues with an average occupancy less than 0.9.

Mol	Chain	Analysed	<RSRZ>	#RSRZ>2	OWAB(Å ²)	Q<0.9
1	A	250/280 (89%)	-0.12	3 (1%) 79 80	33, 61, 109, 144	0
1	B	250/280 (89%)	-0.05	7 (2%) 53 56	38, 64, 107, 151	0
All	All	500/560 (89%)	-0.09	10 (2%) 65 68	33, 63, 109, 151	0

All (10) RSRZ outliers are listed below:

Mol	Chain	Res	Type	RSRZ
1	B	26	TYR	5.9
1	B	4	VAL	3.9
1	B	125	ARG	3.7
1	B	28	LEU	3.6
1	A	169[A]	TYR	3.6
1	A	250	ASN	3.5
1	A	126	ILE	3.3
1	B	83	PHE	3.1
1	B	124	PRO	2.8
1	B	165	LEU	2.3

6.2 Non-standard residues in protein, DNA, RNA chains [i](#)

There are no non-standard protein/DNA/RNA residues in this entry.

6.3 Carbohydrates [i](#)

There are no monosaccharides in this entry.

6.4 Ligands [i](#)

In the following table, the Atoms column lists the number of modelled atoms in the group and the number defined in the chemical component dictionary. The B-factors column lists the minimum, median, 95th percentile and maximum values of B factors of atoms in the group. The column labelled 'Q< 0.9' lists the number of atoms with occupancy less than 0.9.

Mol	Type	Chain	Res	Atoms	RSCC	RSR	B-factors(Å ²)	Q<0.9
2	HEZ	B	308	8/8	0.76	0.21	83,85,88,90	0
2	HEZ	B	303	8/8	0.81	0.18	63,72,74,75	0
4	PGO	B	310	5/5	0.86	0.23	98,99,99,100	0
2	HEZ	B	301	8/8	0.87	0.10	68,74,82,86	0
2	HEZ	A	304	8/8	0.88	0.09	62,79,81,83	0
2	HEZ	A	302	8/8	0.89	0.12	66,68,72,74	0
4	PGO	A	317	5/5	0.89	0.18	76,76,80,84	0
2	HEZ	A	301	8/8	0.89	0.23	61,73,74,75	0
2	HEZ	B	305	8/8	0.90	0.10	68,81,83,84	0
2	HEZ	A	311	8/8	0.90	0.13	71,74,77,77	0
4	PGO	A	315	5/5	0.91	0.23	87,90,94,96	0
3	BU1	A	319	6/6	0.91	0.14	78,83,87,89	0
3	BU1	B	312	6/6	0.91	0.13	74,79,82,83	0
3	BU1	A	309	6/6	0.92	0.14	75,83,84,84	0
2	HEZ	A	312	8/8	0.92	0.16	48,56,70,73	0
2	HEZ	B	309	8/8	0.92	0.12	80,83,86,86	0
2	HEZ	A	306	8/8	0.93	0.10	64,67,70,71	0
4	PGO	A	316	5/5	0.94	0.14	85,87,91,93	0
3	BU1	A	308	6/6	0.94	0.12	68,69,72,72	0
4	PGO	A	318	5/5	0.94	0.32	75,75,85,91	0
4	PGO	B	306	5/5	0.94	0.10	75,77,81,85	0
3	BU1	B	302	6/6	0.94	0.20	58,65,70,71	0
4	PGO	B	311	5/5	0.95	0.13	73,73,76,79	0
5	MG	A	314	1/1	0.95	0.17	63,63,63,63	0
4	PGO	A	307	5/5	0.96	0.09	67,67,69,72	0
2	HEZ	A	303	8/8	0.96	0.11	49,54,69,70	0
2	HEZ	A	310	8/8	0.96	0.12	42,58,63,64	0
3	BU1	A	305	6/6	0.98	0.21	61,62,65,68	0
5	MG	A	313	1/1	0.98	0.04	60,60,60,60	0
4	PGO	A	320	5/5	0.98	0.08	75,76,77,77	0
5	MG	B	307	1/1	0.98	0.16	61,61,61,61	0
4	PGO	B	304	5/5	0.99	0.31	57,63,70,77	0

6.5 Other polymers [i](#)

There are no such residues in this entry.