



# Full wwPDB X-ray Structure Validation Report ⓘ

Nov 20, 2023 – 11:07 PM JST

PDB ID : 7EHS  
Title : Levansucrase from Brenneria sp. EniD 312  
Authors : Xu, W.; Ni, D.W.; Hou, X.D.; Rao, Y.J.; Pijning, T.; Guskov, A.; Mu, W.M.  
Deposited on : 2021-03-30  
Resolution : 1.60 Å(reported)

This is a Full wwPDB X-ray Structure Validation Report for a publicly released PDB entry.

We welcome your comments at [validation@mail.wwpdb.org](mailto:validation@mail.wwpdb.org)

A user guide is available at

<https://www.wwpdb.org/validation/2017/XrayValidationReportHelp>

with specific help available everywhere you see the ⓘ symbol.

The types of validation reports are described at

<http://www.wwpdb.org/validation/2017/FAQs#types>.

---

The following versions of software and data (see [references ⓘ](#)) were used in the production of this report:

MolProbity : 4.02b-467  
Mogul : 1.8.5 (274361), CSD as541be (2020)  
Xtriage (Phenix) : 1.13  
EDS : 2.36  
buster-report : 1.1.7 (2018)  
Percentile statistics : 20191225.v01 (using entries in the PDB archive December 25th 2019)  
Refmac : 5.8.0158  
CCP4 : 7.0.044 (Gargrove)  
Ideal geometry (proteins) : Engh & Huber (2001)  
Ideal geometry (DNA, RNA) : Parkinson et al. (1996)  
Validation Pipeline (wwPDB-VP) : 2.36

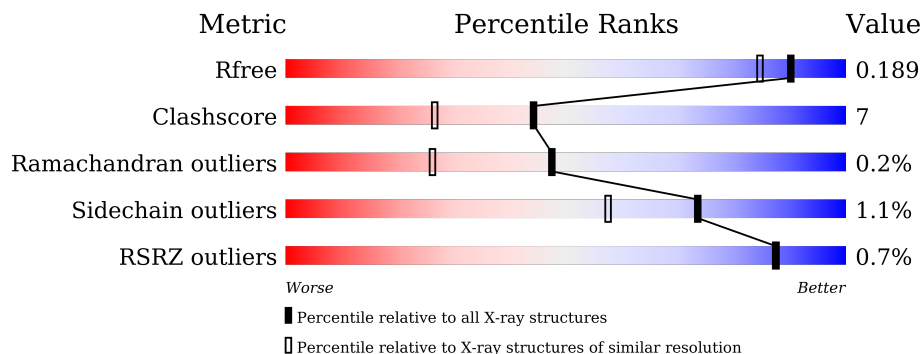
# 1 Overall quality at a glance

The following experimental techniques were used to determine the structure:

*X-RAY DIFFRACTION*

The reported resolution of this entry is 1.60 Å.

Percentile scores (ranging between 0-100) for global validation metrics of the entry are shown in the following graphic. The table shows the number of entries on which the scores are based.



Metric	Whole archive (#Entries)	Similar resolution (#Entries, resolution range(Å))
$R_{free}$	130704	3398 (1.60-1.60)
Clashscore	141614	3665 (1.60-1.60)
Ramachandran outliers	138981	3564 (1.60-1.60)
Sidechain outliers	138945	3563 (1.60-1.60)
RSRZ outliers	127900	3321 (1.60-1.60)

The table below summarises the geometric issues observed across the polymeric chains and their fit to the electron density. The red, orange, yellow and green segments of the lower bar indicate the fraction of residues that contain outliers for  $\geq 3$ , 2, 1 and 0 types of geometric quality criteria respectively. A grey segment represents the fraction of residues that are not modelled. The numeric value for each fraction is indicated below the corresponding segment, with a dot representing fractions  $\leq 5\%$ . The upper red bar (where present) indicates the fraction of residues that have poor fit to the electron density. The numeric value is given above the bar.

Mol	Chain	Length	Quality of chain
1	A	443	

The following table lists non-polymeric compounds, carbohydrate monomers and non-standard residues in protein, DNA, RNA chains that are outliers for geometric or electron-density-fit criteria:

Mol	Type	Chain	Res	Chirality	Geometry	Clashes	Electron density
3	GOL	A	513	-	-	X	-
3	GOL	A	514	-	-	X	-

## 2 Entry composition [i](#)

There are 6 unique types of molecules in this entry. The entry contains 4063 atoms, of which 0 are hydrogens and 0 are deuteriums.

In the tables below, the ZeroOcc column contains the number of atoms modelled with zero occupancy, the AltConf column contains the number of residues with at least one atom in alternate conformation and the Trace column contains the number of residues modelled with at most 2 atoms.

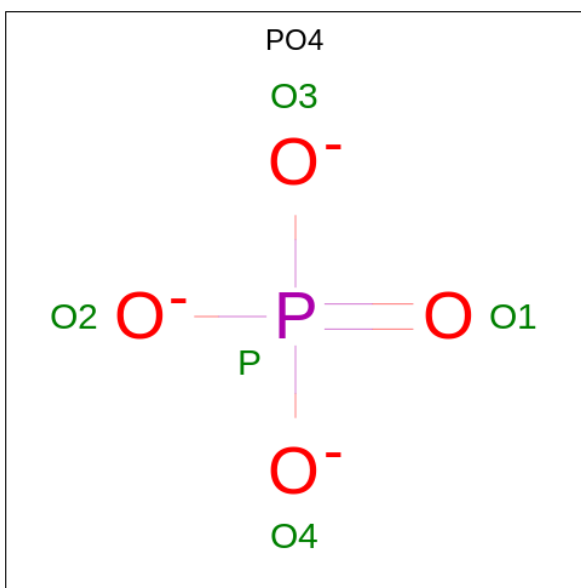
- Molecule 1 is a protein called Levansucrase.

Mol	Chain	Residues	Atoms					ZeroOcc	AltConf	Trace
			Total	C	N	O	S			
1	A	418	3350	2151	541	645	13	0	16	0

There are 7 discrepancies between the modelled and reference sequences:

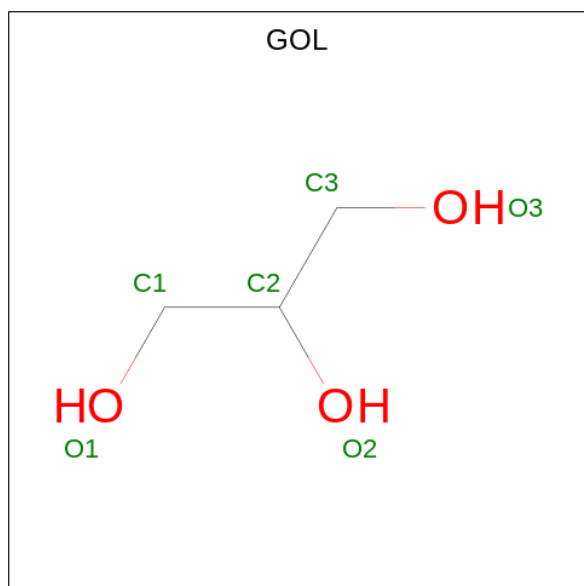
Chain	Residue	Modelled	Actual	Comment	Reference
A	154	SER	ALA	engineered mutation	UNP G7LSK3
A	438	HIS	-	expression tag	UNP G7LSK3
A	439	HIS	-	expression tag	UNP G7LSK3
A	440	HIS	-	expression tag	UNP G7LSK3
A	441	HIS	-	expression tag	UNP G7LSK3
A	442	HIS	-	expression tag	UNP G7LSK3
A	443	HIS	-	expression tag	UNP G7LSK3

- Molecule 2 is PHOSPHATE ION (three-letter code: PO4) (formula: O<sub>4</sub>P).



Mol	Chain	Residues	Atoms			ZeroOcc	AltConf
2	A	1	Total	O	P	0	0
			5	4	1		

- Molecule 3 is GLYCEROL (three-letter code: GOL) (formula:  $C_3H_8O_3$ ).



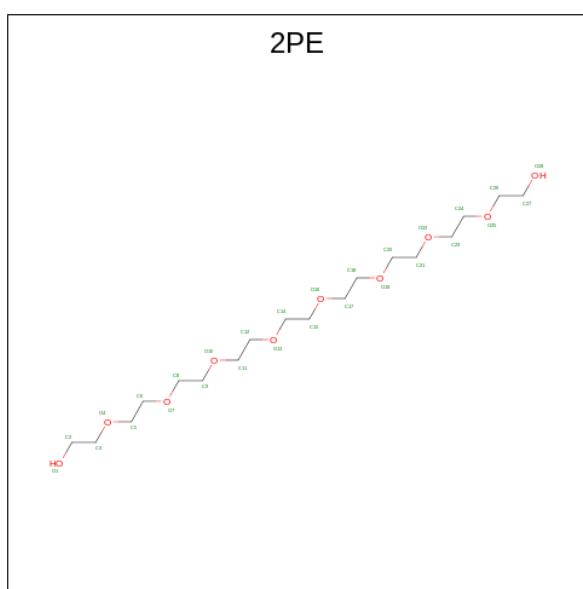
Mol	Chain	Residues	Atoms			ZeroOcc	AltConf
3	A	1	Total	C	O	0	0
			6	3	3		
3	A	1	Total	C	O	0	0
			6	3	3		
3	A	1	Total	C	O	0	0
			6	3	3		
3	A	1	Total	C	O	0	0
			6	3	3		
3	A	1	Total	C	O	0	0
			6	3	3		
3	A	1	Total	C	O	0	1
			12	6	6		
3	A	1	Total	C	O	0	0
			6	3	3		
3	A	1	Total	C	O	0	0
			6	3	3		
3	A	1	Total	C	O	0	0
			6	3	3		
3	A	1	Total	C	O	0	0
			6	3	3		

*Continued on next page...*

Continued from previous page...

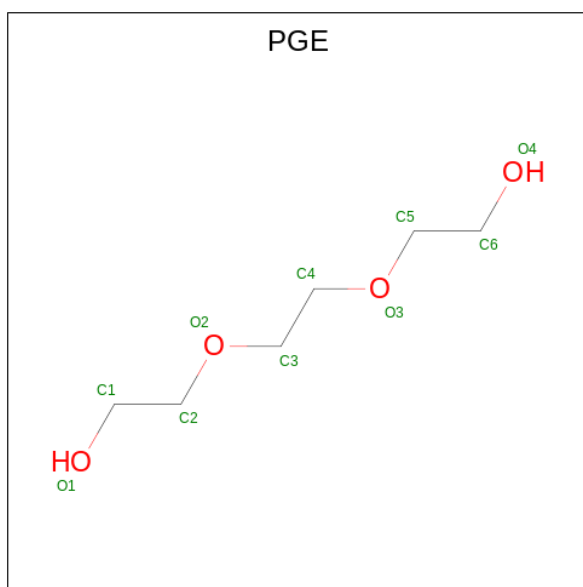
Mol	Chain	Residues	Atoms			ZeroOcc	AltConf
3	A	1	Total	C	O	0	0
			6	3	3		
3	A	1	Total	C	O	0	0
			6	3	3		
3	A	1	Total	C	O	0	0
			6	3	3		
3	A	1	Total	C	O	0	0
			6	3	3		

- Molecule 4 is NONAETHYLENE GLYCOL (three-letter code: 2PE) (formula: C<sub>18</sub>H<sub>38</sub>O<sub>10</sub>).



Mol	Chain	Residues	Atoms			ZeroOcc	AltConf
4	A	1	Total	C	O	0	0
			28	18	10		

- Molecule 5 is TRIETHYLENE GLYCOL (three-letter code: PGE) (formula: C<sub>6</sub>H<sub>14</sub>O<sub>4</sub>).



Mol	Chain	Residues	Atoms	ZeroOcc	AltConf
5	A	1	Total C O 10 6 4	0	0
5	A	1	Total C O 10 6 4	0	0

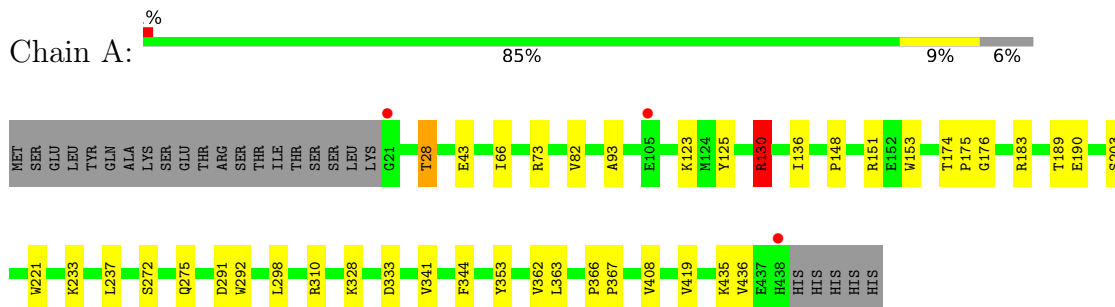
- Molecule 6 is water.

Mol	Chain	Residues	Atoms	ZeroOcc	AltConf
6	A	564	Total O 564 564	0	0

### 3 Residue-property plots [i](#)

These plots are drawn for all protein, RNA, DNA and oligosaccharide chains in the entry. The first graphic for a chain summarises the proportions of the various outlier classes displayed in the second graphic. The second graphic shows the sequence view annotated by issues in geometry and electron density. Residues are color-coded according to the number of geometric quality criteria for which they contain at least one outlier: green = 0, yellow = 1, orange = 2 and red = 3 or more. A red dot above a residue indicates a poor fit to the electron density ( $RSRZ > 2$ ). Stretches of 2 or more consecutive residues without any outlier are shown as a green connector. Residues present in the sample, but not in the model, are shown in grey.

- Molecule 1: Levansucrase



## 4 Data and refinement statistics

Property	Value	Source
Space group	P 61 2 2	Depositor
Cell constants a, b, c, $\alpha$ , $\beta$ , $\gamma$	98.31Å 98.31Å 216.47Å 90.00° 90.00° 120.00°	Depositor
Resolution (Å)	85.14 – 1.60 85.14 – 1.60	Depositor EDS
% Data completeness (in resolution range)	89.2 (85.14-1.60) 89.2 (85.14-1.60)	Depositor EDS
$R_{merge}$	(Not available)	Depositor
$R_{sym}$	(Not available)	Depositor
$\langle I/\sigma(I) \rangle$ <sup>1</sup>	3.00 (at 1.60Å)	Xtrriage
Refinement program	REFMAC 5.8.0258	Depositor
R, $R_{free}$	0.157 , 0.181 0.169 , 0.189	Depositor DCC
$R_{free}$ test set	3686 reflections (5.03%)	wwPDB-VP
Wilson B-factor (Å <sup>2</sup> )	15.5	Xtrriage
Anisotropy	0.024	Xtrriage
Bulk solvent $k_{sol}$ (e/Å <sup>3</sup> ), $B_{sol}$ (Å <sup>2</sup> )	0.36 , 50.8	EDS
L-test for twinning <sup>2</sup>	$\langle  L  \rangle = 0.50$ , $\langle L^2 \rangle = 0.33$	Xtrriage
Estimated twinning fraction	No twinning to report.	Xtrriage
$F_o, F_c$ correlation	0.96	EDS
Total number of atoms	4063	wwPDB-VP
Average B, all atoms (Å <sup>2</sup> )	21.0	wwPDB-VP

Xtrriage's analysis on translational NCS is as follows: *The largest off-origin peak in the Patterson function is 4.72% of the height of the origin peak. No significant pseudotranslation is detected.*

<sup>1</sup>Intensities estimated from amplitudes.

<sup>2</sup>Theoretical values of  $\langle |L| \rangle$ ,  $\langle L^2 \rangle$  for acentric reflections are 0.5, 0.333 respectively for untwinned datasets, and 0.375, 0.2 for perfectly twinned datasets.



## 5 Model quality [i](#)

### 5.1 Standard geometry [i](#)

Bond lengths and bond angles in the following residue types are not validated in this section: PO4, PGE, 2PE, GOL

The Z score for a bond length (or angle) is the number of standard deviations the observed value is removed from the expected value. A bond length (or angle) with  $|Z| > 5$  is considered an outlier worth inspection. RMSZ is the root-mean-square of all Z scores of the bond lengths (or angles).

Mol	Chain	Bond lengths		Bond angles	
		RMSZ	# $ Z  > 5$	RMSZ	# $ Z  > 5$
1	A	0.75	1/3496 (0.0%)	0.91	7/4769 (0.1%)

All (1) bond length outliers are listed below:

Mol	Chain	Res	Type	Atoms	Z	Observed(Å)	Ideal(Å)
1	A	43	GLU	CD-OE1	6.60	1.32	1.25

All (7) bond angle outliers are listed below:

Mol	Chain	Res	Type	Atoms	Z	Observed(°)	Ideal(°)
1	A	73	ARG	NE-CZ-NH1	-9.19	115.71	120.30
1	A	310	ARG	CG-CD-NE	-6.74	97.64	111.80
1	A	130[A]	ARG	NE-CZ-NH1	-6.69	116.96	120.30
1	A	130[B]	ARG	NE-CZ-NH1	-6.69	116.96	120.30
1	A	310	ARG	NE-CZ-NH2	-6.06	117.27	120.30
1	A	73	ARG	NE-CZ-NH2	5.94	123.27	120.30
1	A	333	ASP	CB-CA-C	-5.08	100.24	110.40

There are no chirality outliers.

There are no planarity outliers.

### 5.2 Too-close contacts [i](#)

In the following table, the Non-H and H(model) columns list the number of non-hydrogen atoms and hydrogen atoms in the chain respectively. The H(added) column lists the number of hydrogen atoms added and optimized by MolProbity. The Clashes column lists the number of clashes within the asymmetric unit, whereas Symm-Clashes lists symmetry-related clashes.

Mol	Chain	Non-H	H(model)	H(added)	Clashes	Symm-Clashes
1	A	3350	0	3239	41	0
2	A	5	0	0	0	0
3	A	96	0	128	13	1
4	A	28	0	38	2	0
5	A	20	0	28	4	0
6	A	564	0	0	11	0
All	All	4063	0	3433	46	1

The all-atom clashscore is defined as the number of clashes found per 1000 atoms (including hydrogen atoms). The all-atom clashscore for this structure is 7.

All (46) close contacts within the same asymmetric unit are listed below, sorted by their clash magnitude.

Atom-1	Atom-2	Interatomic distance (Å)	Clash overlap (Å)
1:A:28:THR:HG22	6:A:1058:HOH:O	1.51	1.10
1:A:341[A]:VAL:HG12	1:A:363:LEU:HB3	1.56	0.86
1:A:203[A]:SER:OG	5:A:518:PGE:H5	1.80	0.81
1:A:28:THR:HG23	6:A:888:HOH:O	1.85	0.75
1:A:291[A]:ASP:OD1	6:A:601:HOH:O	2.10	0.69
1:A:408[A]:VAL:HG23	6:A:903:HOH:O	1.93	0.68
1:A:176:GLY:H	3:A:513:GOL:H12	1.60	0.65
1:A:176:GLY:H	3:A:513:GOL:C1	2.10	0.64
1:A:408[A]:VAL:CG2	6:A:903:HOH:O	2.44	0.64
3:A:512:GOL:H31	6:A:708:HOH:O	1.98	0.62
1:A:148:PRO:HG3	5:A:518:PGE:H6	1.81	0.61
1:A:136:ILE:HD11	3:A:507[B]:GOL:H12	1.83	0.60
1:A:175:PRO:HA	3:A:513:GOL:H12	1.83	0.59
1:A:203[A]:SER:OG	5:A:518:PGE:C5	2.51	0.59
1:A:123[B]:LYS:HD3	1:A:125:TYR:HE1	1.68	0.59
3:A:507[B]:GOL:O2	6:A:602:HOH:O	2.18	0.57
1:A:123[B]:LYS:HD3	1:A:125:TYR:CE1	2.43	0.54
1:A:153:TRP:CG	3:A:514:GOL:H31	2.44	0.53
1:A:82[B]:VAL:HG13	1:A:436:VAL:CG2	2.40	0.51
4:A:517:2PE:H262	4:A:517:2PE:H211	1.94	0.50
1:A:176:GLY:N	3:A:513:GOL:H12	2.28	0.49
1:A:341[A]:VAL:CG1	1:A:363:LEU:HB3	2.33	0.48
1:A:93:ALA:HA	1:A:123[B]:LYS:HE3	1.95	0.48
1:A:341[A]:VAL:HG12	1:A:363:LEU:CB	2.37	0.48
1:A:153:TRP:HB3	3:A:514:GOL:H31	1.96	0.48
5:A:518:PGE:H1	6:A:993:HOH:O	2.14	0.46
1:A:233:LYS:HE3	6:A:1063:HOH:O	2.16	0.46
1:A:328:LYS:HD2	6:A:1025:HOH:O	2.14	0.46

*Continued on next page...*

Continued from previous page...

Atom-1	Atom-2	Interatomic distance (Å)	Clash overlap (Å)
1:A:153:TRP:HB3	3:A:514:GOL:C3	2.46	0.45
1:A:82[B]:VAL:HG13	1:A:436:VAL:HG21	1.99	0.45
1:A:189:THR:HA	3:A:504:GOL:H2	1.98	0.44
1:A:130[B]:ARG:NH2	1:A:190:GLU:O	2.43	0.44
1:A:341[A]:VAL:HG13	1:A:362:VAL:HB	1.99	0.44
1:A:153:TRP:CB	3:A:514:GOL:H31	2.48	0.44
1:A:363:LEU:CD1	1:A:419[A]:VAL:CG2	2.97	0.43
1:A:366:PRO:HA	1:A:367:PRO:HD3	1.95	0.43
1:A:435:LYS:HD2	6:A:878:HOH:O	2.19	0.42
1:A:363:LEU:CD1	1:A:419[A]:VAL:HG22	2.50	0.42
1:A:237[B]:LEU:HG	1:A:292:TRP:CH2	2.56	0.41
1:A:66:ILE:C	1:A:66:ILE:HD12	2.41	0.41
1:A:130[A]:ARG:HH11	1:A:130[A]:ARG:CG	2.33	0.41
1:A:344:PHE:HB3	1:A:353:TYR:HB3	2.02	0.41
1:A:272:SER:HA	1:A:275:GLN:OE1	2.20	0.41
4:A:517:2PE:H262	4:A:517:2PE:C21	2.51	0.41
1:A:183:ARG:O	3:A:512:GOL:C3	2.70	0.40
1:A:298:LEU:HD23	1:A:298:LEU:HA	1.97	0.40

All (1) symmetry-related close contacts are listed below. The label for Atom-2 includes the symmetry operator and encoded unit-cell translations to be applied.

Atom-1	Atom-2	Interatomic distance (Å)	Clash overlap (Å)
3:A:513:GOL:O2	3:A:513:GOL:O2[10_664]	1.56	0.64

## 5.3 Torsion angles [i](#)

### 5.3.1 Protein backbone [i](#)

In the following table, the Percentiles column shows the percent Ramachandran outliers of the chain as a percentile score with respect to all X-ray entries followed by that with respect to entries of similar resolution.

The Analysed column shows the number of residues for which the backbone conformation was analysed, and the total number of residues.

Mol	Chain	Analysed	Favoured	Allowed	Outliers	Percentiles
1	A	432/443 (98%)	424 (98%)	7 (2%)	1 (0%)	47 26

All (1) Ramachandran outliers are listed below:

Mol	Chain	Res	Type
1	A	174	THR

### 5.3.2 Protein sidechains [i](#)

In the following table, the Percentiles column shows the percent sidechain outliers of the chain as a percentile score with respect to all X-ray entries followed by that with respect to entries of similar resolution.

The Analysed column shows the number of residues for which the sidechain conformation was analysed, and the total number of residues.

Mol	Chain	Analysed	Rotameric	Outliers	Percentiles
1	A	370/378 (98%)	365 (99%)	5 (1%)	67 47

All (5) residues with a non-rotameric sidechain are listed below:

Mol	Chain	Res	Type
1	A	28	THR
1	A	130[A]	ARG
1	A	130[B]	ARG
1	A	151	ARG
1	A	221	TRP

Sometimes sidechains can be flipped to improve hydrogen bonding and reduce clashes. All (1) such sidechains are listed below:

Mol	Chain	Res	Type
1	A	23	GLN

### 5.3.3 RNA [i](#)

There are no RNA molecules in this entry.

## 5.4 Non-standard residues in protein, DNA, RNA chains [i](#)

There are no non-standard protein/DNA/RNA residues in this entry.

### 5.5 Carbohydrates [i](#)

There are no monosaccharides in this entry.

## 5.6 Ligand geometry

20 ligands are modelled in this entry.

In the following table, the Counts columns list the number of bonds (or angles) for which Mogul statistics could be retrieved, the number of bonds (or angles) that are observed in the model and the number of bonds (or angles) that are defined in the Chemical Component Dictionary. The Link column lists molecule types, if any, to which the group is linked. The Z score for a bond length (or angle) is the number of standard deviations the observed value is removed from the expected value. A bond length (or angle) with  $|Z| > 2$  is considered an outlier worth inspection. RMSZ is the root-mean-square of all Z scores of the bond lengths (or angles).

Mol	Type	Chain	Res	Link	Bond lengths			Bond angles		
					Counts	RMSZ	# Z  > 2	Counts	RMSZ	# Z  > 2
3	GOL	A	509	-	5,5,5	0.17	0	5,5,5	0.69	0
2	PO4	A	501	-	4,4,4	0.82	0	6,6,6	0.48	0
3	GOL	A	504	-	5,5,5	0.23	0	5,5,5	0.50	0
3	GOL	A	516	-	5,5,5	0.15	0	5,5,5	0.50	0
3	GOL	A	505	-	5,5,5	0.12	0	5,5,5	0.42	0
3	GOL	A	514	-	5,5,5	0.20	0	5,5,5	0.57	0
4	2PE	A	517	-	27,27,27	0.27	0	26,26,26	0.45	0
5	PGE	A	518	-	9,9,9	0.33	0	8,8,8	0.23	0
3	GOL	A	507[B]	-	5,5,5	0.22	0	5,5,5	0.34	0
3	GOL	A	512	-	5,5,5	0.24	0	5,5,5	0.63	0
3	GOL	A	510	-	5,5,5	0.17	0	5,5,5	0.31	0
3	GOL	A	507[A]	-	5,5,5	0.18	0	5,5,5	0.61	0
5	PGE	A	519	-	9,9,9	0.36	0	8,8,8	0.28	0
3	GOL	A	511	-	5,5,5	0.23	0	5,5,5	0.46	0
3	GOL	A	513	-	5,5,5	0.25	0	5,5,5	0.44	0
3	GOL	A	503	-	5,5,5	0.22	0	5,5,5	0.27	0
3	GOL	A	515	-	5,5,5	0.25	0	5,5,5	0.54	0
3	GOL	A	502	-	5,5,5	0.11	0	5,5,5	0.41	0
3	GOL	A	508	-	5,5,5	0.20	0	5,5,5	0.33	0
3	GOL	A	506	-	5,5,5	0.21	0	5,5,5	0.56	0

In the following table, the Chirals column lists the number of chiral outliers, the number of chiral centers analysed, the number of these observed in the model and the number defined in the Chemical Component Dictionary. Similar counts are reported in the Torsion and Rings columns. '2' means no outliers of that kind were identified.

Mol	Type	Chain	Res	Link	Chirals	Torsions	Rings
3	GOL	A	509	-	-	0/4/4/4	-
3	GOL	A	504	-	-	2/4/4/4	-
3	GOL	A	516	-	-	2/4/4/4	-
3	GOL	A	505	-	-	4/4/4/4	-

*Continued on next page...*

*Continued from previous page...*

Mol	Type	Chain	Res	Link	Chirals	Torsions	Rings
3	GOL	A	514	-	-	2/4/4/4	-
4	2PE	A	517	-	-	6/25/25/25	-
5	PGE	A	518	-	-	5/7/7/7	-
3	GOL	A	507[B]	-	-	0/4/4/4	-
3	GOL	A	512	-	-	4/4/4/4	-
3	GOL	A	510	-	-	0/4/4/4	-
3	GOL	A	507[A]	-	-	1/4/4/4	-
5	PGE	A	519	-	-	0/7/7/7	-
3	GOL	A	511	-	-	4/4/4/4	-
3	GOL	A	513	-	-	4/4/4/4	-
3	GOL	A	503	-	-	2/4/4/4	-
3	GOL	A	515	-	-	3/4/4/4	-
3	GOL	A	502	-	-	0/4/4/4	-
3	GOL	A	508	-	-	0/4/4/4	-
3	GOL	A	506	-	-	0/4/4/4	-

There are no bond length outliers.

There are no bond angle outliers.

There are no chirality outliers.

All (39) torsion outliers are listed below:

Mol	Chain	Res	Type	Atoms
3	A	504	GOL	O1-C1-C2-C3
3	A	505	GOL	O1-C1-C2-O2
3	A	505	GOL	O1-C1-C2-C3
3	A	505	GOL	C1-C2-C3-O3
3	A	511	GOL	O1-C1-C2-C3
3	A	511	GOL	C1-C2-C3-O3
3	A	512	GOL	C1-C2-C3-O3
3	A	512	GOL	O2-C2-C3-O3
3	A	513	GOL	O1-C1-C2-C3
3	A	514	GOL	O1-C1-C2-C3
3	A	511	GOL	O1-C1-C2-O2
3	A	514	GOL	O1-C1-C2-O2
5	A	518	PGE	O3-C5-C6-O4
3	A	512	GOL	O1-C1-C2-C3
3	A	513	GOL	C1-C2-C3-O3
3	A	515	GOL	O1-C1-C2-C3
3	A	516	GOL	C1-C2-C3-O3

*Continued on next page...*

*Continued from previous page...*

Mol	Chain	Res	Type	Atoms
3	A	504	GOL	O1-C1-C2-O2
3	A	505	GOL	O2-C2-C3-O3
3	A	513	GOL	O1-C1-C2-O2
3	A	515	GOL	O1-C1-C2-O2
4	A	517	2PE	O25-C26-C27-O28
3	A	511	GOL	O2-C2-C3-O3
3	A	513	GOL	O2-C2-C3-O3
3	A	516	GOL	O2-C2-C3-O3
4	A	517	2PE	C23-C24-O25-C26
4	A	517	2PE	O22-C23-C24-O25
5	A	518	PGE	O1-C1-C2-O2
4	A	517	2PE	C24-C23-O22-C21
5	A	518	PGE	O2-C3-C4-O3
5	A	518	PGE	C3-C4-O3-C5
3	A	503	GOL	C1-C2-C3-O3
5	A	518	PGE	C1-C2-O2-C3
3	A	512	GOL	O1-C1-C2-O2
3	A	503	GOL	O2-C2-C3-O3
4	A	517	2PE	O16-C17-C18-O19
3	A	515	GOL	C1-C2-C3-O3
3	A	507[A]	GOL	O2-C2-C3-O3
4	A	517	2PE	O1-C2-C3-O4

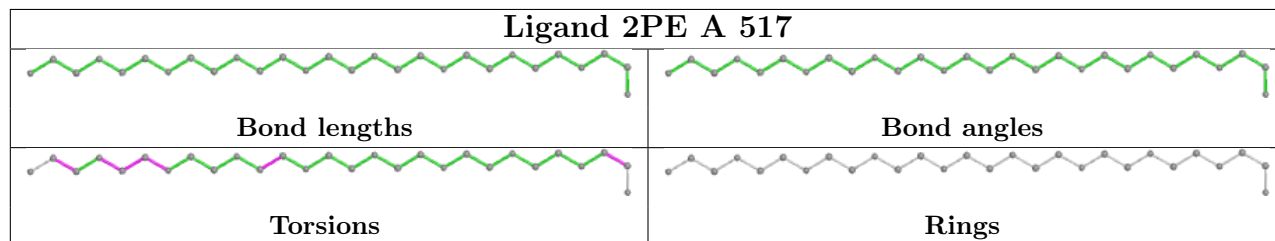
There are no ring outliers.

7 monomers are involved in 20 short contacts:

Mol	Chain	Res	Type	Clashes	Symm-Clashes
3	A	504	GOL	1	0
3	A	514	GOL	4	0
4	A	517	2PE	2	0
5	A	518	PGE	4	0
3	A	507[B]	GOL	2	0
3	A	512	GOL	2	0
3	A	513	GOL	4	1

The following is a two-dimensional graphical depiction of Mogul quality analysis of bond lengths, bond angles, torsion angles, and ring geometry for all instances of the Ligand of Interest. In addition, ligands with molecular weight > 250 and outliers as shown on the validation Tables will also be included. For torsion angles, if less than 5% of the Mogul distribution of torsion angles is within 10 degrees of the torsion angle in question, then that torsion angle is considered an outlier. Any bond that is central to one or more torsion angles identified as an outlier by Mogul will be highlighted in the graph. For rings, the root-mean-square deviation (RMSD) between the ring

in question and similar rings identified by Mogul is calculated over all ring torsion angles. If the average RMSD is greater than 60 degrees and the minimal RMSD between the ring in question and any Mogul-identified rings is also greater than 60 degrees, then that ring is considered an outlier. The outliers are highlighted in purple. The color gray indicates Mogul did not find sufficient equivalents in the CSD to analyse the geometry.



## 5.7 Other polymers [i](#)

There are no such residues in this entry.

## 5.8 Polymer linkage issues [i](#)

There are no chain breaks in this entry.



## 6 Fit of model and data [i](#)

### 6.1 Protein, DNA and RNA chains [i](#)

In the following table, the column labelled '#RSRZ > 2' contains the number (and percentage) of RSRZ outliers, followed by percent RSRZ outliers for the chain as percentile scores relative to all X-ray entries and entries of similar resolution. The OWAB column contains the minimum, median, 95<sup>th</sup> percentile and maximum values of the occupancy-weighted average B-factor per residue. The column labelled 'Q < 0.9' lists the number of (and percentage) of residues with an average occupancy less than 0.9.

Mol	Chain	Analysed	<RSRZ>	#RSRZ>2	OWAB(Å <sup>2</sup> )	Q<0.9
1	A	418/443 (94%)	-0.68	3 (0%) 87 87	10, 15, 35, 76	0

All (3) RSRZ outliers are listed below:

Mol	Chain	Res	Type	RSRZ
1	A	21	GLY	2.4
1	A	105	GLU	2.2
1	A	438	HIS	2.1

### 6.2 Non-standard residues in protein, DNA, RNA chains [i](#)

There are no non-standard protein/DNA/RNA residues in this entry.

### 6.3 Carbohydrates [i](#)

There are no monosaccharides in this entry.

### 6.4 Ligands [i](#)

In the following table, the Atoms column lists the number of modelled atoms in the group and the number defined in the chemical component dictionary. The B-factors column lists the minimum, median, 95<sup>th</sup> percentile and maximum values of B factors of atoms in the group. The column labelled 'Q < 0.9' lists the number of atoms with occupancy less than 0.9.

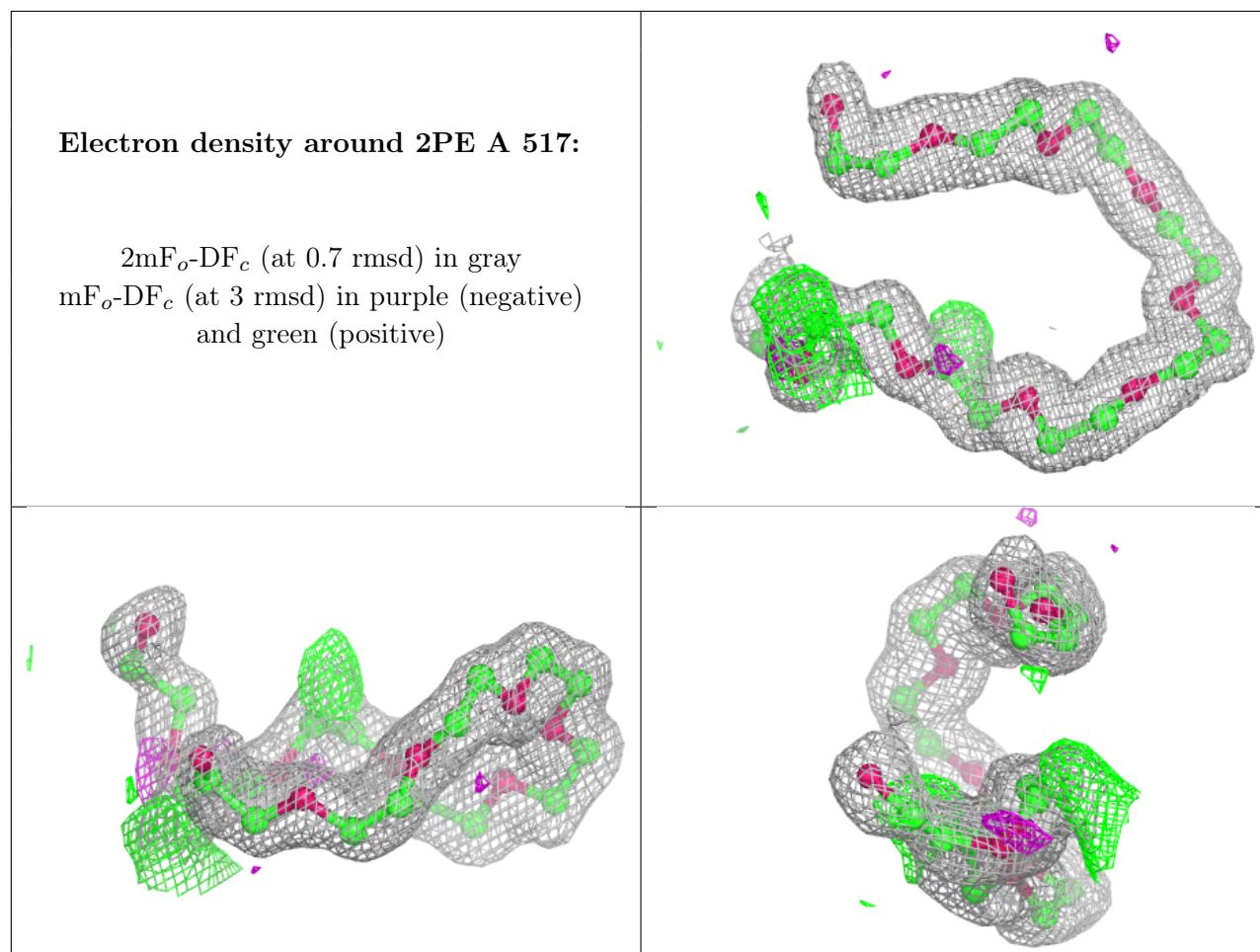
Mol	Type	Chain	Res	Atoms	RSCC	RSR	B-factors(Å <sup>2</sup> )	Q<0.9
3	GOL	A	513	6/6	0.69	0.21	31,39,42,53	0
3	GOL	A	510	6/6	0.75	0.19	51,58,60,63	0
3	GOL	A	516	6/6	0.81	0.17	43,57,63,64	0
3	GOL	A	505	6/6	0.82	0.16	54,57,59,69	0

*Continued on next page...*

*Continued from previous page...*

Mol	Type	Chain	Res	Atoms	RSCC	RSR	B-factors(Å <sup>2</sup> )	Q<0.9
3	GOL	A	509	6/6	0.84	0.17	52,55,58,61	0
3	GOL	A	504	6/6	0.86	0.20	32,40,48,61	0
3	GOL	A	514	6/6	0.88	0.20	20,33,38,43	0
3	GOL	A	515	6/6	0.88	0.26	32,50,55,56	0
3	GOL	A	512	6/6	0.88	0.21	20,36,40,51	0
3	GOL	A	508	6/6	0.89	0.18	37,41,49,51	0
5	PGE	A	519	10/10	0.90	0.18	34,39,44,44	0
3	GOL	A	511	6/6	0.91	0.17	28,40,42,50	0
5	PGE	A	518	10/10	0.92	0.11	34,42,47,48	0
3	GOL	A	506	6/6	0.93	0.13	28,32,39,41	0
4	2PE	A	517	28/28	0.93	0.10	23,30,41,52	0
3	GOL	A	503	6/6	0.94	0.08	23,32,32,33	0
3	GOL	A	502	6/6	0.96	0.07	17,27,30,33	0
3	GOL	A	507[A]	6/6	0.97	0.10	12,13,13,13	6
3	GOL	A	507[B]	6/6	0.97	0.10	20,23,25,25	6
2	PO4	A	501	5/5	0.99	0.06	20,21,22,24	0

The following is a graphical depiction of the model fit to experimental electron density of all instances of the Ligand of Interest. In addition, ligands with molecular weight > 250 and outliers as shown on the geometry validation Tables will also be included. Each fit is shown from different orientation to approximate a three-dimensional view.



## 6.5 Other polymers [i](#)

There are no such residues in this entry.