



# Full wwPDB X-ray Structure Validation Report ⓘ

Oct 17, 2023 – 04:24 PM EDT

PDB ID : 2EIW  
Title : Crystal analysis of delta1-pyrroline-5-carboxylate dehydrogenase from *Thermus thermophilus* with bound L-proline  
Authors : Inagaki, E.; Sakamoto, K.; Yokoyama, S.; RIKEN Structural Genomics/Proteomics Initiative (RSGI)  
Deposited on : 2007-03-13  
Resolution : 1.90 Å(reported)

This is a Full wwPDB X-ray Structure Validation Report for a publicly released PDB entry.

We welcome your comments at [validation@mail.wwpdb.org](mailto:validation@mail.wwpdb.org)

A user guide is available at

<https://www.wwpdb.org/validation/2017/XrayValidationReportHelp>

with specific help available everywhere you see the ⓘ symbol.

The types of validation reports are described at

<http://www.wwpdb.org/validation/2017/FAQs#types>.

---

The following versions of software and data (see [references ⓘ](#)) were used in the production of this report:

MolProbity : 4.02b-467  
Mogul : 1.8.5 (274361), CSD as541be (2020)  
Xtriage (Phenix) : 1.13  
EDS : 2.36  
Percentile statistics : 20191225.v01 (using entries in the PDB archive December 25th 2019)  
Refmac : 5.8.0158  
CCP4 : 7.0.044 (Gargrove)  
Ideal geometry (proteins) : Engh & Huber (2001)  
Ideal geometry (DNA, RNA) : Parkinson et al. (1996)  
Validation Pipeline (wwPDB-VP) : 2.36

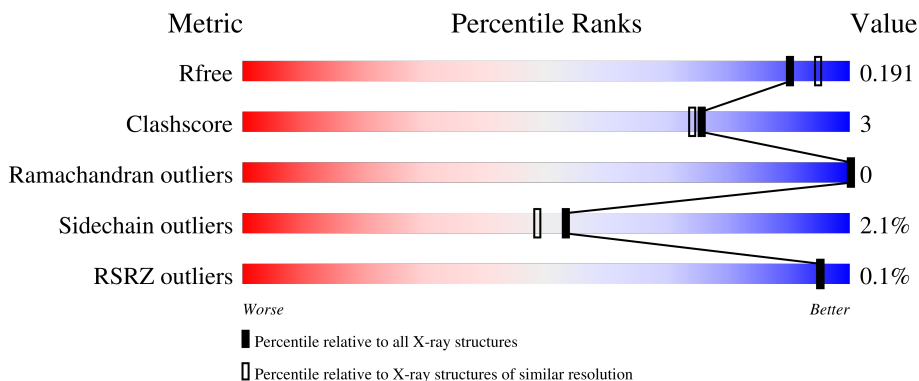
# 1 Overall quality at a glance

The following experimental techniques were used to determine the structure:

*X-RAY DIFFRACTION*

The reported resolution of this entry is 1.90 Å.

Percentile scores (ranging between 0-100) for global validation metrics of the entry are shown in the following graphic. The table shows the number of entries on which the scores are based.



Metric	Whole archive (#Entries)	Similar resolution (#Entries, resolution range(Å))
$R_{free}$	130704	6207 (1.90-1.90)
Clashscore	141614	6847 (1.90-1.90)
Ramachandran outliers	138981	6760 (1.90-1.90)
Sidechain outliers	138945	6760 (1.90-1.90)
RSRZ outliers	127900	6082 (1.90-1.90)

The table below summarises the geometric issues observed across the polymeric chains and their fit to the electron density. The red, orange, yellow and green segments of the lower bar indicate the fraction of residues that contain outliers for  $\geq 3$ , 2, 1 and 0 types of geometric quality criteria respectively. A grey segment represents the fraction of residues that are not modelled. The numeric value for each fraction is indicated below the corresponding segment, with a dot representing fractions  $\leq 5\%$ . The upper red bar (where present) indicates the fraction of residues that have poor fit to the electron density. The numeric value is given above the bar.

Mol	Chain	Length	Quality of chain
1	A	516	
1	B	516	

The following table lists non-polymeric compounds, carbohydrate monomers and non-standard residues in protein, DNA, RNA chains that are outliers for geometric or electron-density-fit criteria:

Mol	Type	Chain	Res	Chirality	Geometry	Clashes	Electron density
5	MPD	A	1531	X	-	-	-
5	MPD	A	1532	X	-	-	-
5	MPD	B	5532	X	-	-	-
5	MPD	B	5535	X	-	-	-

## 2 Entry composition [i](#)

There are 6 unique types of molecules in this entry. The entry contains 9031 atoms, of which 0 are hydrogens and 0 are deuteriums.

In the tables below, the ZeroOcc column contains the number of atoms modelled with zero occupancy, the AltConf column contains the number of residues with at least one atom in alternate conformation and the Trace column contains the number of residues modelled with at most 2 atoms.

- Molecule 1 is a protein called 1-pyrroline-5-carboxylate dehydrogenase.

Mol	Chain	Residues	Atoms					ZeroOcc	AltConf	Trace
			Total	C	N	O	S			
1	A	516	Total 4081	C 2623	N 703	O 745	S 10	0	11	0
1	B	516	Total 4083	C 2624	N 701	O 748	S 10	0	13	0

- Molecule 2 is ACETATE ION (three-letter code: ACT) (formula: C<sub>2</sub>H<sub>3</sub>O<sub>2</sub>).

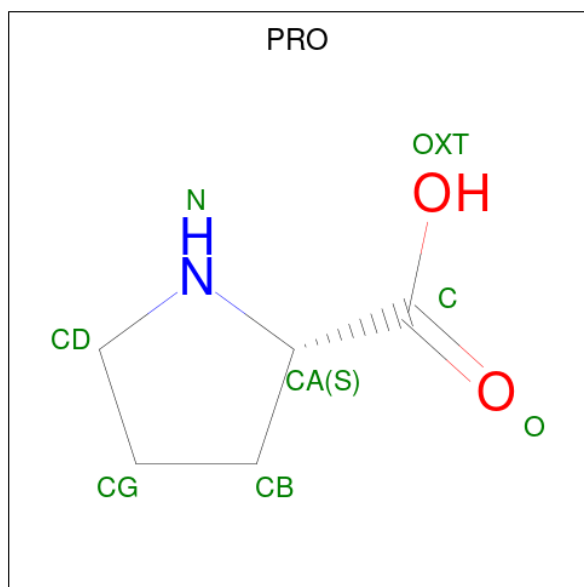


Mol	Chain	Residues	Atoms			ZeroOcc	AltConf
			Total	C	O		
2	A	1	Total 4	C 2	O 2	0	0
2	B	1	Total 4	C 2	O 2	0	0

- Molecule 3 is SODIUM ION (three-letter code: NA) (formula: Na).

Mol	Chain	Residues	Atoms	ZeroOcc	AltConf
3	A	1	Total Na 1 1	0	0
3	B	1	Total Na 1 1	0	0

- Molecule 4 is PROLINE (three-letter code: PRO) (formula: C<sub>5</sub>H<sub>9</sub>NO<sub>2</sub>).



Mol	Chain	Residues	Atoms	ZeroOcc	AltConf
4	A	1	Total C N O 8 5 1 2	0	0
4	B	1	Total C N O 8 5 1 2	0	0

- Molecule 5 is (4S)-2-METHYL-2,4-PENTANEDIOL (three-letter code: MPD) (formula: C<sub>6</sub>H<sub>14</sub>O<sub>2</sub>).



Mol	Chain	Residues	Atoms	ZeroOcc	AltConf
5	A	1	Total C O 8 6 2	0	0
5	A	1	Total C O 8 6 2	0	0
5	A	1	Total C O 8 6 2	0	0
5	A	1	Total C O 8 6 2	0	0
5	A	1	Total C O 8 6 2	0	0
5	B	1	Total C O 8 6 2	0	0
5	B	1	Total C O 8 6 2	0	0
5	B	1	Total C O 8 6 2	0	0
5	B	1	Total C O 8 6 2	0	0
5	B	1	Total C O 8 6 2	0	0

- Molecule 6 is water.

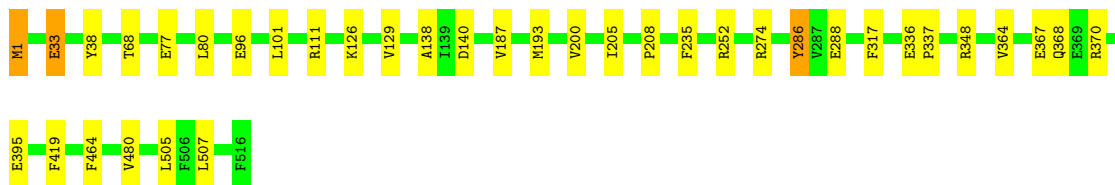
Mol	Chain	Residues	Atoms	ZeroOcc	AltConf
6	A	386	Total O 388 388	0	8
6	B	371	Total O 373 373	0	13

### 3 Residue-property plots [i](#)

These plots are drawn for all protein, RNA, DNA and oligosaccharide chains in the entry. The first graphic for a chain summarises the proportions of the various outlier classes displayed in the second graphic. The second graphic shows the sequence view annotated by issues in geometry and electron density. Residues are color-coded according to the number of geometric quality criteria for which they contain at least one outlier: green = 0, yellow = 1, orange = 2 and red = 3 or more. A red dot above a residue indicates a poor fit to the electron density ( $RSRZ > 2$ ). Stretches of 2 or more consecutive residues without any outlier are shown as a green connector. Residues present in the sample, but not in the model, are shown in grey.

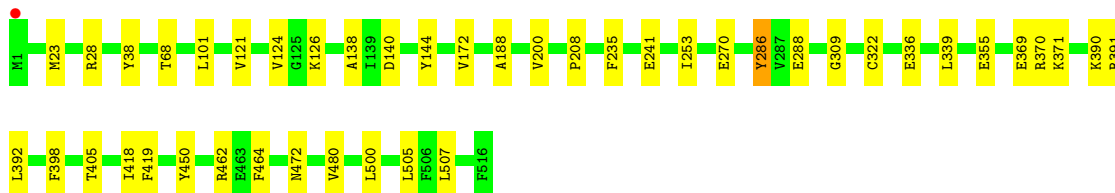
- Molecule 1: 1-pyrroline-5-carboxylate dehydrogenase

Chain A:  93% 7%



- Molecule 1: 1-pyrroline-5-carboxylate dehydrogenase

Chain B:  91% 8%



## 4 Data and refinement statistics i

Property	Value	Source
Space group	H 3	Depositor
Cell constants a, b, c, $\alpha$ , $\beta$ , $\gamma$	100.35Å 100.35Å 279.99Å 90.00° 90.00° 120.00°	Depositor
Resolution (Å)	24.61 – 1.90 24.61 – 1.90	Depositor EDS
% Data completeness (in resolution range)	95.5 (24.61-1.90) 95.5 (24.61-1.90)	Depositor EDS
$R_{merge}$	0.07	Depositor
$R_{sym}$	0.06	Depositor
$\langle I/\sigma(I) \rangle$ <sup>1</sup>	3.39 (at 1.90Å)	Xtrriage
Refinement program	REFMAC 5.2.0005	Depositor
R, $R_{free}$	0.157 , 0.192 0.157 , 0.191	Depositor DCC
$R_{free}$ test set	4145 reflections (5.01%)	wwPDB-VP
Wilson B-factor (Å <sup>2</sup> )	15.9	Xtrriage
Anisotropy	0.529	Xtrriage
Bulk solvent $k_{sol}$ (e/Å <sup>3</sup> ), $B_{sol}$ (Å <sup>2</sup> )	0.35 , 37.6	EDS
L-test for twinning <sup>2</sup>	$\langle  L  \rangle = 0.43$ , $\langle L^2 \rangle = 0.26$	Xtrriage
Estimated twinning fraction	0.116 for -h-k,k,-l	Xtrriage
$F_o, F_c$ correlation	0.96	EDS
Total number of atoms	9031	wwPDB-VP
Average B, all atoms (Å <sup>2</sup> )	17.0	wwPDB-VP

Xtrriage's analysis on translational NCS is as follows: *The largest off-origin peak in the Patterson function is 4.58% of the height of the origin peak. No significant pseudotranslation is detected.*

<sup>1</sup>Intensities estimated from amplitudes.

<sup>2</sup>Theoretical values of  $\langle |L| \rangle$ ,  $\langle L^2 \rangle$  for acentric reflections are 0.5, 0.333 respectively for untwinned datasets, and 0.375, 0.2 for perfectly twinned datasets.



## 5 Model quality

### 5.1 Standard geometry

Bond lengths and bond angles in the following residue types are not validated in this section: ACT, MPD, NA

The Z score for a bond length (or angle) is the number of standard deviations the observed value is removed from the expected value. A bond length (or angle) with  $|Z| > 5$  is considered an outlier worth inspection. RMSZ is the root-mean-square of all Z scores of the bond lengths (or angles).

Mol	Chain	Bond lengths		Bond angles	
		RMSZ	# Z  >5	RMSZ	# Z  >5
1	A	0.69	0/4235	0.67	0/5740
1	B	0.69	0/4248	0.67	0/5759
All	All	0.69	0/8483	0.67	0/11499

There are no bond length outliers.

There are no bond angle outliers.

There are no chirality outliers.

There are no planarity outliers.

### 5.2 Too-close contacts

In the following table, the Non-H and H(model) columns list the number of non-hydrogen atoms and hydrogen atoms in the chain respectively. The H(added) column lists the number of hydrogen atoms added and optimized by MolProbity. The Clashes column lists the number of clashes within the asymmetric unit, whereas Symm-Clashes lists symmetry-related clashes.

Mol	Chain	Non-H	H(model)	H(added)	Clashes	Symm-Clashes
1	A	4081	0	4074	23	0
1	B	4083	0	4073	26	0
2	A	4	0	3	1	0
2	B	4	0	3	1	0
3	A	1	0	0	0	0
3	B	1	0	0	0	0
4	A	8	0	7	0	0
4	B	8	0	7	0	0
5	A	40	0	70	3	0
5	B	40	0	70	5	0
6	A	388	0	0	2	0

*Continued on next page...*

*Continued from previous page...*

Mol	Chain	Non-H	H(model)	H(added)	Clashes	Symm-Clashes
6	B	373	0	0	1	0
All	All	9031	0	8307	52	0

The all-atom clashscore is defined as the number of clashes found per 1000 atoms (including hydrogen atoms). The all-atom clashscore for this structure is 3.

All (52) close contacts within the same asymmetric unit are listed below, sorted by their clash magnitude.

Atom-1	Atom-2	Interatomic distance (Å)	Clash overlap (Å)
1:A:348:ARG:HG3	1:A:348:ARG:HH11	1.51	0.76
1:A:367[A]:GLU:OE2	1:A:370[A]:ARG:NH2	2.20	0.74
1:A:77:GLU:OE2	1:A:252:ARG:NH2	2.21	0.73
1:A:111[A]:ARG:NH2	6:A:5866[A]:HOH:O	2.23	0.66
2:A:1520:ACT:H2	1:B:172:VAL:HG11	1.78	0.65
1:A:286[B]:TYR:CZ	1:A:505:LEU:HB3	2.34	0.62
1:B:336[A]:GLU:HG3	6:B:5746:HOH:O	2.02	0.60
1:A:129:VAL:HG23	6:A:5683:HOH:O	2.06	0.55
1:B:391:ARG:HD2	1:B:398:PHE:O	2.08	0.54
5:B:5534:MPD:C1	5:B:5534:MPD:O4	2.57	0.53
1:A:364:VAL:HG12	1:A:368[A]:GLN:HG3	1.92	0.51
1:B:38:TYR:HB2	1:B:68:THR:HG22	1.94	0.49
1:B:286[B]:TYR:CZ	1:B:505:LEU:HB3	2.48	0.49
1:A:348:ARG:HG3	1:A:348:ARG:NH1	2.23	0.49
1:B:339:LEU:HD21	1:B:405:THR:HG21	1.95	0.48
1:A:140:ASP:HB3	1:A:480:VAL:HB	1.95	0.47
5:B:5536:MPD:H12	5:B:5536:MPD:H52	1.97	0.47
1:A:1[B]:MET:HG2	1:A:96:GLU:HG3	1.96	0.46
1:B:140:ASP:HB3	1:B:480:VAL:HB	1.97	0.46
1:B:371:LYS:HE2	1:B:418:ILE:O	2.15	0.46
1:B:370:ARG:HG2	1:B:370:ARG:HH21	1.80	0.46
1:A:138:ALA:HB2	1:A:187:VAL:HG12	1.97	0.46
1:B:241:GLU:HG2	5:B:5534:MPD:H12	1.98	0.46
1:A:286[B]:TYR:CE2	1:A:505:LEU:HD22	2.51	0.46
1:B:138:ALA:HB2	1:B:188:ALA:HA	1.98	0.46
1:A:200:VAL:HB	1:A:507:LEU:HD21	1.99	0.45
1:B:391:ARG:NH1	1:B:392:LEU:O	2.48	0.45
1:A:80:LEU:HA	1:A:205:ILE:HD11	1.97	0.45
1:B:208:PRO:HG3	1:B:235:PHE:CE2	2.51	0.44
1:B:370:ARG:HG2	1:B:370:ARG:NH2	2.32	0.44
5:B:5534:MPD:O4	5:B:5534:MPD:H12	2.17	0.44
1:B:369:GLU:OE2	1:B:391:ARG:NE	2.51	0.44

*Continued on next page...*

Continued from previous page...

Atom-1	Atom-2	Interatomic distance (Å)	Clash overlap (Å)
1:A:126:LYS:HG2	1:A:317:PHE:CD1	2.53	0.43
1:A:336:GLU:N	1:A:337[A]:PRO:HD2	2.33	0.43
1:B:500:LEU:HD13	5:B:5532:MPD:H51	2.01	0.43
5:A:1531:MPD:H13	5:A:1531:MPD:H4	1.68	0.43
5:A:5530:MPD:HM2	1:B:144:TYR:CD1	2.54	0.43
1:B:309:GLY:HA3	1:B:450:TYR:OH	2.19	0.43
1:B:200:VAL:HB	1:B:507:LEU:HD21	2.00	0.42
1:B:450:TYR:CD2	1:B:472:ASN:HA	2.55	0.42
1:A:274:ARG:HG2	1:B:270:GLU:HG3	2.01	0.41
1:B:121:VAL:HG11	1:B:355:GLU:HA	2.01	0.41
1:B:462:ARG:O	2:B:5520:ACT:H2	2.19	0.41
1:B:253:ILE:HD13	1:B:253:ILE:HA	1.99	0.41
1:A:33:GLU:O	1:A:33:GLU:CG	2.68	0.41
5:A:5530:MPD:HM2	1:B:144:TYR:CE1	2.55	0.41
1:A:138:ALA:CB	1:A:187:VAL:HG12	2.51	0.41
1:A:126:LYS:HG2	1:A:317:PHE:CE1	2.56	0.41
1:A:193[A]:MET:HB3	1:A:193[A]:MET:HE2	1.82	0.40
1:A:38:TYR:O	1:A:68:THR:HA	2.21	0.40
1:A:208:PRO:HG3	1:A:235:PHE:CE2	2.57	0.40
1:B:124:VAL:HG23	1:B:126:LYS:HG3	2.03	0.40

There are no symmetry-related clashes.

## 5.3 Torsion angles [i](#)

### 5.3.1 Protein backbone [i](#)

In the following table, the Percentiles column shows the percent Ramachandran outliers of the chain as a percentile score with respect to all X-ray entries followed by that with respect to entries of similar resolution.

The Analysed column shows the number of residues for which the backbone conformation was analysed, and the total number of residues.

Mol	Chain	Analysed	Favoured	Allowed	Outliers	Percentiles
1	A	524/516 (102%)	516 (98%)	8 (2%)	0	100 100
1	B	526/516 (102%)	515 (98%)	11 (2%)	0	100 100
All	All	1050/1032 (102%)	1031 (98%)	19 (2%)	0	100 100

There are no Ramachandran outliers to report.

### 5.3.2 Protein sidechains [i](#)

In the following table, the Percentiles column shows the percent sidechain outliers of the chain as a percentile score with respect to all X-ray entries followed by that with respect to entries of similar resolution.

The Analysed column shows the number of residues for which the sidechain conformation was analysed, and the total number of residues.

Mol	Chain	Analysed	Rotameric	Outliers	Percentiles	
1	A	418/407 (103%)	408 (98%)	10 (2%)	49	43
1	B	420/407 (103%)	409 (97%)	11 (3%)	46	39
All	All	838/814 (103%)	817 (98%)	21 (2%)	53	41

All (21) residues with a non-rotameric sidechain are listed below:

Mol	Chain	Res	Type
1	A	1[A]	MET
1	A	1[B]	MET
1	A	33	GLU
1	A	101	LEU
1	A	286[A]	TYR
1	A	286[B]	TYR
1	A	288	GLU
1	A	395	GLU
1	A	419	PHE
1	A	464	PHE
1	B	23	MET
1	B	28	ARG
1	B	101	LEU
1	B	286[A]	TYR
1	B	286[B]	TYR
1	B	288	GLU
1	B	322[A]	CYS
1	B	322[B]	CYS
1	B	390	LYS
1	B	419	PHE
1	B	464	PHE

Sometimes sidechains can be flipped to improve hydrogen bonding and reduce clashes. There are no such sidechains identified.

### 5.3.3 RNA [i](#)

There are no RNA molecules in this entry.

## 5.4 Non-standard residues in protein, DNA, RNA chains [i](#)

There are no non-standard protein/DNA/RNA residues in this entry.

## 5.5 Carbohydrates [i](#)

There are no monosaccharides in this entry.

## 5.6 Ligand geometry [i](#)

Of 16 ligands modelled in this entry, 2 are monoatomic - leaving 14 for Mogul analysis.

In the following table, the Counts columns list the number of bonds (or angles) for which Mogul statistics could be retrieved, the number of bonds (or angles) that are observed in the model and the number of bonds (or angles) that are defined in the Chemical Component Dictionary. The Link column lists molecule types, if any, to which the group is linked. The Z score for a bond length (or angle) is the number of standard deviations the observed value is removed from the expected value. A bond length (or angle) with  $|Z| > 2$  is considered an outlier worth inspection. RMSZ is the root-mean-square of all Z scores of the bond lengths (or angles).

Mol	Type	Chain	Res	Link	Bond lengths			Bond angles		
					Counts	RMSZ	$\# Z  > 2$	Counts	RMSZ	$\# Z  > 2$
5	MPD	B	5534	-	7,7,7	0.28	0	9,10,10	0.61	0
2	ACT	A	1520	-	3,3,3	0.75	0	3,3,3	1.67	1 (33%)
5	MPD	B	5532	-	7,7,7	0.25	0	9,10,10	0.27	0
4	PRO	A	5517	-	8,8,8	0.95	1 (12%)	10,10,10	1.21	1 (10%)
5	MPD	B	5536	-	7,7,7	0.42	0	9,10,10	0.49	0
5	MPD	B	5535	-	7,7,7	0.23	0	9,10,10	0.44	0
5	MPD	A	1533	-	7,7,7	0.33	0	9,10,10	0.44	0
5	MPD	A	1532	-	7,7,7	0.30	0	9,10,10	0.74	0
5	MPD	A	1531	-	7,7,7	0.32	0	9,10,10	0.36	0
4	PRO	B	5541	-	8,8,8	0.87	0	10,10,10	1.07	0
5	MPD	A	5530	-	7,7,7	0.29	0	9,10,10	0.96	0
2	ACT	B	5520	-	3,3,3	0.81	0	3,3,3	1.58	1 (33%)
5	MPD	A	5531	-	7,7,7	0.29	0	9,10,10	0.36	0
5	MPD	B	1530	-	7,7,7	0.33	0	9,10,10	0.93	1 (11%)

In the following table, the Chirals column lists the number of chiral outliers, the number of chiral centers analysed, the number of these observed in the model and the number defined in the

Chemical Component Dictionary. Similar counts are reported in the Torsion and Rings columns. '-' means no outliers of that kind were identified.

Mol	Type	Chain	Res	Link	Chirals	Torsions	Rings
5	MPD	B	5534	-	-	4/5/5/5	-
5	MPD	B	5536	-	-	2/5/5/5	-
5	MPD	B	5532	-	1/1/2/2	0/5/5/5	-
4	PRO	A	5517	-	-	1/4/11/11	0/1/1/1
5	MPD	B	5535	-	1/1/2/2	0/5/5/5	-
5	MPD	A	1533	-	-	1/5/5/5	-
5	MPD	A	1532	-	1/1/2/2	0/5/5/5	-
5	MPD	A	1531	-	1/1/2/2	0/5/5/5	-
4	PRO	B	5541	-	-	0/4/11/11	0/1/1/1
5	MPD	A	5530	-	-	1/5/5/5	-
5	MPD	A	5531	-	-	0/5/5/5	-
5	MPD	B	1530	-	-	0/5/5/5	-

All (1) bond length outliers are listed below:

Mol	Chain	Res	Type	Atoms	Z	Observed(Å)	Ideal(Å)
4	A	5517	PRO	OXT-C	-2.34	1.22	1.30

All (4) bond angle outliers are listed below:

Mol	Chain	Res	Type	Atoms	Z	Observed(°)	Ideal(°)
4	A	5517	PRO	OXT-C-O	-2.32	118.82	124.09
2	A	1520	ACT	OXT-C-CH3	2.12	123.94	115.18
2	B	5520	ACT	OXT-C-O	-2.11	114.26	122.05
5	B	1530	MPD	O2-C2-C3	-2.04	102.15	109.80

All (4) chirality outliers are listed below:

Mol	Chain	Res	Type	Atom
5	A	1531	MPD	C4
5	A	1532	MPD	C4
5	B	5532	MPD	C4
5	B	5535	MPD	C4

All (9) torsion outliers are listed below:

Mol	Chain	Res	Type	Atoms
5	B	5534	MPD	C1-C2-C3-C4
5	B	5534	MPD	O2-C2-C3-C4

*Continued on next page...*

*Continued from previous page...*

Mol	Chain	Res	Type	Atoms
5	B	5536	MPD	C2-C3-C4-O4
5	B	5534	MPD	CM-C2-C3-C4
4	A	5517	PRO	O-C-CA-CB
5	B	5536	MPD	O2-C2-C3-C4
5	A	1533	MPD	C2-C3-C4-C5
5	A	5530	MPD	C2-C3-C4-C5
5	B	5534	MPD	C2-C3-C4-O4

There are no ring outliers.

7 monomers are involved in 10 short contacts:

Mol	Chain	Res	Type	Clashes	Symm-Clashes
5	B	5534	MPD	3	0
2	A	1520	ACT	1	0
5	B	5532	MPD	1	0
5	B	5536	MPD	1	0
5	A	1531	MPD	1	0
5	A	5530	MPD	2	0
2	B	5520	ACT	1	0

## 5.7 Other polymers [i](#)

There are no such residues in this entry.

## 5.8 Polymer linkage issues [i](#)

There are no chain breaks in this entry.

## 6 Fit of model and data [i](#)

### 6.1 Protein, DNA and RNA chains [i](#)

In the following table, the column labelled '#RSRZ > 2' contains the number (and percentage) of RSRZ outliers, followed by percent RSRZ outliers for the chain as percentile scores relative to all X-ray entries and entries of similar resolution. The OWAB column contains the minimum, median, 95<sup>th</sup> percentile and maximum values of the occupancy-weighted average B-factor per residue. The column labelled 'Q < 0.9' lists the number of (and percentage) of residues with an average occupancy less than 0.9.

Mol	Chain	Analysed	<RSRZ>	#RSRZ>2	OWAB(Å <sup>2</sup> )	Q<0.9
1	A	516/516 (100%)	-0.71	0 100   100	10, 14, 25, 34	0
1	B	516/516 (100%)	-0.71	1 (0%) 95   95	9, 15, 26, 34	0
All	All	1032/1032 (100%)	-0.71	1 (0%) 95   95	9, 15, 25, 34	0

All (1) RSRZ outliers are listed below:

Mol	Chain	Res	Type	RSRZ
1	B	1[A]	MET	2.8

### 6.2 Non-standard residues in protein, DNA, RNA chains [i](#)

There are no non-standard protein/DNA/RNA residues in this entry.

### 6.3 Carbohydrates [i](#)

There are no monosaccharides in this entry.

### 6.4 Ligands [i](#)

In the following table, the Atoms column lists the number of modelled atoms in the group and the number defined in the chemical component dictionary. The B-factors column lists the minimum, median, 95<sup>th</sup> percentile and maximum values of B factors of atoms in the group. The column labelled 'Q < 0.9' lists the number of atoms with occupancy less than 0.9.

Mol	Type	Chain	Res	Atoms	RSCC	RSR	B-factors(Å <sup>2</sup> )	Q<0.9
5	MPD	B	5536	8/8	0.75	0.22	31,34,38,39	0
5	MPD	A	1533	8/8	0.86	0.21	41,43,43,43	0
5	MPD	A	5531	8/8	0.88	0.17	39,40,42,43	0
5	MPD	B	5534	8/8	0.90	0.13	29,33,34,35	0

*Continued on next page...*



*Continued from previous page...*

Mol	Type	Chain	Res	Atoms	RSCC	RSR	B-factors( $\text{\AA}^2$ )	Q<0.9
5	MPD	A	1531	8/8	0.90	0.16	35,36,40,40	0
4	PRO	B	5541	8/8	0.91	0.12	24,28,28,29	0
5	MPD	B	5535	8/8	0.91	0.15	28,30,31,32	0
5	MPD	A	1532	8/8	0.91	0.16	30,32,32,33	0
5	MPD	B	5532	8/8	0.92	0.16	37,39,41,41	0
4	PRO	A	5517	8/8	0.92	0.13	22,25,26,26	0
2	ACT	B	5520	4/4	0.95	0.11	24,24,24,26	0
2	ACT	A	1520	4/4	0.96	0.10	21,22,22,22	0
5	MPD	B	1530	8/8	0.96	0.14	25,26,28,28	0
5	MPD	A	5530	8/8	0.96	0.14	23,27,28,29	0
3	NA	A	1540	1/1	0.98	0.09	24,24,24,24	0
3	NA	B	5540	1/1	0.98	0.06	26,26,26,26	0

## 6.5 Other polymers [i](#)

There are no such residues in this entry.