



# Full wwPDB X-ray Structure Validation Report ⓘ

Dec 15, 2024 – 05:00 AM EST

PDB ID : 1EKV  
Title : HUMAN BRANCHED CHAIN AMINO ACID AMINOTRANSFERASE (MITOCHONDRIAL): THREE DIMENSIONAL STRUCTURE OF ENZYME INACTIVATED BY TRIS BOUND TO THE PYRIDOXAL-5'-PHOSPHATE ON ONE END AND ACTIVE SITE LYS202 NZ ON THE OTHER.  
Authors : Yennawar, N.H.; Dunbar, J.H.; Conway, M.; Hutson, S.M.; Farber, G.K.  
Deposited on : 2000-03-09  
Resolution : 2.25 Å(reported)

This is a Full wwPDB X-ray Structure Validation Report for a publicly released PDB entry.

We welcome your comments at [validation@mail.wwpdb.org](mailto:validation@mail.wwpdb.org)

A user guide is available at

<https://www.wwpdb.org/validation/2017/XrayValidationReportHelp>

with specific help available everywhere you see the ⓘ symbol.

The types of validation reports are described at

<http://www.wwpdb.org/validation/2017/FAQs#types>.

---

The following versions of software and data (see [references ⓘ](#)) were used in the production of this report:

MolProbity : 4.02b-467  
Mogul : 2022.3.0, CSD as543be (2022)  
Xtrriage (Phenix) : 1.21  
EDS : 3.0  
Percentile statistics : 20231227.v01 (using entries in the PDB archive December 27th 2023)  
CCP4 : 9.0.004 (Gargrove)  
Density-Fitness : 1.0.11  
Ideal geometry (proteins) : Engh & Huber (2001)  
Ideal geometry (DNA, RNA) : Parkinson et al. (1996)  
Validation Pipeline (wwPDB-VP) : 2.40

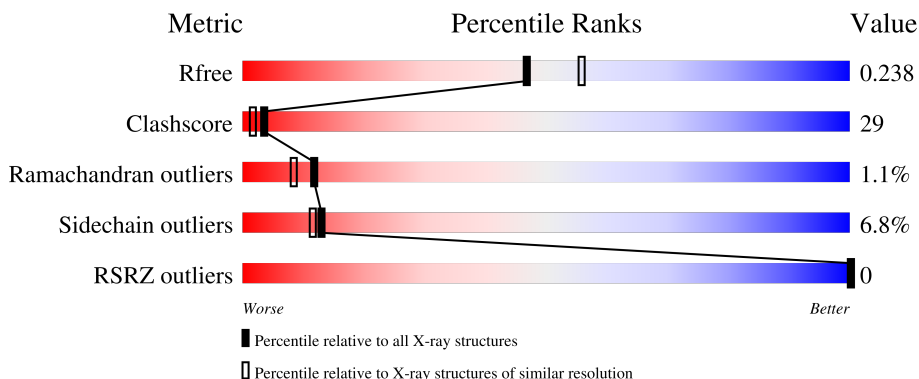
# 1 Overall quality at a glance

The following experimental techniques were used to determine the structure:

*X-RAY DIFFRACTION*

The reported resolution of this entry is 2.25 Å.

Percentile scores (ranging between 0-100) for global validation metrics of the entry are shown in the following graphic. The table shows the number of entries on which the scores are based.



Metric	Whole archive (#Entries)	Similar resolution (#Entries, resolution range(Å))
$R_{free}$	164625	1763 (2.26-2.26)
Clashscore	180529	1919 (2.26-2.26)
Ramachandran outliers	177936	1884 (2.26-2.26)
Sidechain outliers	177891	1885 (2.26-2.26)
RSRZ outliers	164620	1763 (2.26-2.26)

The table below summarises the geometric issues observed across the polymeric chains and their fit to the electron density. The red, orange, yellow and green segments of the lower bar indicate the fraction of residues that contain outliers for  $\geq 3$ , 2, 1 and 0 types of geometric quality criteria respectively. A grey segment represents the fraction of residues that are not modelled. The numeric value for each fraction is indicated below the corresponding segment, with a dot representing fractions  $\leq 5\%$ . The upper red bar (where present) indicates the fraction of residues that have poor fit to the electron density. The numeric value is given above the bar.

Mol	Chain	Length	Quality of chain
1	A	365	
1	B	365	

The following table lists non-polymeric compounds, carbohydrate monomers and non-standard residues in protein, DNA, RNA chains that are outliers for geometric or electron-density-fit criteria:

Mol	Type	Chain	Res	Chirality	Geometry	Clashes	Electron density
3	TRS	B	371	-	X	-	-

## 2 Entry composition [i](#)

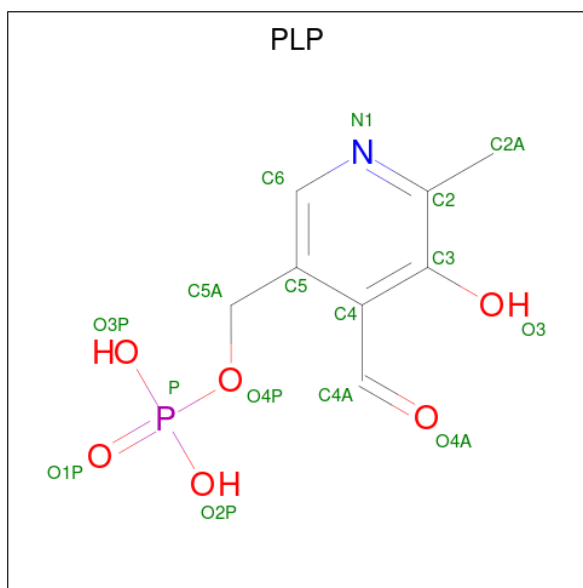
There are 4 unique types of molecules in this entry. The entry contains 6076 atoms, of which 0 are hydrogens and 0 are deuteriums.

In the tables below, the ZeroOcc column contains the number of atoms modelled with zero occupancy, the AltConf column contains the number of residues with at least one atom in alternate conformation and the Trace column contains the number of residues modelled with at most 2 atoms.

- Molecule 1 is a protein called BRANCHED CHAIN AMINO ACID AMINOTRANSFERASE (MITOCHONDRIAL).

Mol	Chain	Residues	Atoms					ZeroOcc	AltConf	Trace
			Total	C	N	O	S			
1	A	365	Total	C	N	O	S	0	0	0
			2910	1875	507	510	18			
1	B	365	Total	C	N	O	S	0	0	0
			2910	1875	507	510	18			

- Molecule 2 is PYRIDOXAL-5'-PHOSPHATE (three-letter code: PLP) (formula: C<sub>8</sub>H<sub>10</sub>NO<sub>6</sub>P).



Mol	Chain	Residues	Atoms					ZeroOcc	AltConf
			Total	C	N	O	P		
2	A	1	Total	C	N	O	P	0	0
			15	8	1	5	1		
2	B	1	Total	C	N	O	P	0	0
			15	8	1	5	1		

- Molecule 3 is 2-AMINO-2-HYDROXYMETHYL-PROPANE-1,3-DIOL (three-letter code: TRS) (formula: C<sub>4</sub>H<sub>12</sub>NO<sub>3</sub>).



Mol	Chain	Residues	Atoms				ZeroOcc	AltConf
			Total	C	N	O		
3	A	1	7	4	1	2	0	0
3	B	1	7	4	1	2	0	0

- Molecule 4 is water.

Mol	Chain	Residues	Atoms		ZeroOcc	AltConf
			Total	O		
4	A	107	107	107	0	0
4	B	105	105	105	0	0



## 4 Data and refinement statistics i

Property	Value	Source
Space group	P 32	Depositor
Cell constants a, b, c, $\alpha$ , $\beta$ , $\gamma$	83.74Å 83.74Å 104.81Å 90.00° 90.00° 120.00°	Depositor
Resolution (Å)	34.27 – 2.25 34.27 – 2.25	Depositor EDS
% Data completeness (in resolution range)	63.3 (34.27-2.25) 80.4 (34.27-2.25)	Depositor EDS
$R_{merge}$	0.13	Depositor
$R_{sym}$	(Not available)	Depositor
$\langle I/\sigma(I) \rangle$ <sup>1</sup>	3.32 (at 2.24Å)	Xtrriage
Refinement program	CNS 0.9	Depositor
R, $R_{free}$	0.189 , 0.250 0.208 , 0.238	Depositor DCC
$R_{free}$ test set	3136 reflections (10.00%)	wwPDB-VP
Wilson B-factor (Å <sup>2</sup> )	19.1	Xtrriage
Anisotropy	0.170	Xtrriage
Bulk solvent $k_{sol}$ (e/Å <sup>3</sup> ), $B_{sol}$ (Å <sup>2</sup> )	0.37 , 16.8	EDS
L-test for twinning <sup>2</sup>	$\langle  L  \rangle = 0.49$ , $\langle L^2 \rangle = 0.32$	Xtrriage
Estimated twinning fraction	0.034 for -h,-k,l 0.439 for h,-h-k,-l 0.039 for -k,-h,-l	Xtrriage
$F_o, F_c$ correlation	0.95	EDS
Total number of atoms	6076	wwPDB-VP
Average B, all atoms (Å <sup>2</sup> )	20.0	wwPDB-VP

Xtrriage's analysis on translational NCS is as follows: *The largest off-origin peak in the Patterson function is 5.16% of the height of the origin peak. No significant pseudotranslation is detected.*

<sup>1</sup>Intensities estimated from amplitudes.

<sup>2</sup>Theoretical values of  $\langle |L| \rangle$ ,  $\langle L^2 \rangle$  for acentric reflections are 0.5, 0.333 respectively for untwinned datasets, and 0.375, 0.2 for perfectly twinned datasets.

## 5 Model quality [i](#)

### 5.1 Standard geometry [i](#)

Bond lengths and bond angles in the following residue types are not validated in this section: TRS, PLP

The Z score for a bond length (or angle) is the number of standard deviations the observed value is removed from the expected value. A bond length (or angle) with  $|Z| > 5$  is considered an outlier worth inspection. RMSZ is the root-mean-square of all Z scores of the bond lengths (or angles).

Mol	Chain	Bond lengths		Bond angles	
		RMSZ	# Z  >5	RMSZ	# Z  >5
1	A	0.56	0/2987	0.77	1/4053 (0.0%)
1	B	0.58	0/2987	0.76	1/4053 (0.0%)
All	All	0.57	0/5974	0.77	2/8106 (0.0%)

There are no bond length outliers.

All (2) bond angle outliers are listed below:

Mol	Chain	Res	Type	Atoms	Z	Observed(°)	Ideal(°)
1	A	248	THR	N-CA-C	-5.28	96.74	111.00
1	B	19	HIS	N-CA-C	-5.04	97.39	111.00

There are no chirality outliers.

There are no planarity outliers.

### 5.2 Too-close contacts [i](#)

In the following table, the Non-H and H(model) columns list the number of non-hydrogen atoms and hydrogen atoms in the chain respectively. The H(added) column lists the number of hydrogen atoms added and optimized by MolProbity. The Clashes column lists the number of clashes within the asymmetric unit, whereas Symm-Clashes lists symmetry-related clashes.

Mol	Chain	Non-H	H(model)	H(added)	Clashes	Symm-Clashes
1	A	2910	0	2938	159	0
1	B	2910	0	2938	194	0
2	A	15	0	6	1	0
2	B	15	0	6	2	0
3	A	7	0	6	1	0
3	B	7	0	7	2	0
4	A	107	0	0	8	0

*Continued on next page...*



*Continued from previous page...*

Mol	Chain	Non-H	H(model)	H(added)	Clashes	Symm-Clashes
4	B	105	0	0	9	0
All	All	6076	0	5901	339	0

The all-atom clashscore is defined as the number of clashes found per 1000 atoms (including hydrogen atoms). The all-atom clashscore for this structure is 29.

All (339) close contacts within the same asymmetric unit are listed below, sorted by their clash magnitude.

Atom-1	Atom-2	Interatomic distance (Å)	Clash overlap (Å)
1:A:84:LYS:HE2	1:A:84:LYS:H	1.16	1.10
1:B:322:ARG:HD2	1:B:329:ASN:ND2	1.67	1.09
1:B:123:ARG:HH11	1:B:123:ARG:HB3	1.04	1.08
1:A:322:ARG:HD2	1:A:329:ASN:ND2	1.68	1.06
1:A:123:ARG:HB3	1:A:123:ARG:HH11	1.24	0.99
1:B:236:THR:HB	1:B:265:ILE:HD11	1.45	0.96
1:A:349:LEU:O	1:A:353:GLN:HG3	1.67	0.93
1:B:200:ASN:H	1:B:200:ASN:HD22	1.13	0.93
1:B:123:ARG:HH11	1:B:123:ARG:CB	1.83	0.92
1:B:349:LEU:O	1:B:353:GLN:HG3	1.69	0.92
1:A:20:LYS:H	1:A:20:LYS:HD2	1.33	0.91
1:B:101:LEU:HD23	1:B:114:LYS:HE3	1.52	0.89
1:A:33:THR:O	1:A:168:CYS:HB3	1.72	0.89
1:A:200:ASN:H	1:A:200:ASN:HD22	1.17	0.89
1:B:82:LYS:HD2	1:B:134:ASP:OD1	1.73	0.88
1:B:123:ARG:HB3	1:B:123:ARG:NH1	1.88	0.87
1:B:33:THR:O	1:B:168:CYS:HB3	1.74	0.86
1:A:123:ARG:HH11	1:A:123:ARG:CB	1.88	0.85
1:B:87:GLN:HB3	1:B:89:ARG:HH21	1.41	0.83
1:A:84:LYS:HE2	1:A:84:LYS:N	1.94	0.82
1:A:271:ARG:O	1:A:275:LEU:HD23	1.80	0.81
1:B:271:ARG:O	1:B:275:LEU:HD23	1.81	0.81
1:B:28:LEU:HA	4:B:416:HOH:O	1.80	0.80
1:A:123:ARG:HB3	1:A:123:ARG:NH1	1.95	0.80
1:B:90:LEU:HB3	1:B:93:PRO:HG3	1.65	0.79
1:B:322:ARG:HD2	1:B:329:ASN:HD22	1.47	0.78
1:A:90:LEU:HB3	1:A:93:PRO:HG3	1.65	0.77
1:A:84:LYS:H	1:A:84:LYS:CE	1.96	0.76
1:B:101:LEU:CD2	1:B:114:LYS:HE3	2.16	0.76
1:A:322:ARG:HD2	1:A:329:ASN:HD22	1.52	0.75
1:A:27:PRO:O	1:A:28:LEU:HB2	1.86	0.74
1:A:44:ASN:OD1	1:A:46:LYS:HB2	1.87	0.74

*Continued on next page...*

*Continued from previous page...*

Atom-1	Atom-2	Interatomic distance (Å)	Clash overlap (Å)
1:A:45:ASP:O	1:A:46:LYS:HD2	1.87	0.74
1:B:237:GLU:HG3	1:B:265:ILE:HD12	1.69	0.73
1:B:298:ARG:O	1:B:302:GLU:HG3	1.87	0.73
1:B:315:CYS:SG	1:B:318:CYS:HB2	2.28	0.73
1:A:315:CYS:SG	1:A:318:CYS:HB2	2.28	0.73
1:A:322:ARG:HD2	1:A:329:ASN:HD21	1.52	0.73
1:B:16:GLN:NE2	1:B:16:GLN:N	2.37	0.72
1:A:338:GLY:HA3	1:A:340:GLU:N	2.05	0.72
1:B:322:ARG:HD2	1:B:329:ASN:HD21	1.51	0.71
1:A:298:ARG:O	1:A:302:GLU:HG3	1.91	0.71
1:B:84:LYS:H	1:B:84:LYS:HD2	1.55	0.71
1:B:44:ASN:HD21	1:B:46:LYS:HE2	1.56	0.71
1:B:237:GLU:CG	1:B:265:ILE:HD12	2.21	0.71
1:A:82:LYS:HB2	1:A:132:VAL:HG11	1.73	0.71
1:A:20:LYS:H	1:A:20:LYS:CD	2.03	0.70
1:A:90:LEU:CB	1:A:93:PRO:HG3	2.22	0.68
1:B:236:THR:HB	1:B:265:ILE:CD1	2.23	0.68
3:B:371:TRS:H21	4:B:414:HOH:O	1.93	0.67
1:B:198:VAL:HG21	1:B:203:LEU:HD11	1.77	0.67
1:A:16:GLN:OE1	1:A:16:GLN:HA	1.94	0.67
1:B:199:GLY:O	4:B:469:HOH:O	2.13	0.66
1:A:78:MET:HG3	1:A:142:VAL:HB	1.76	0.66
1:B:87:GLN:HB3	1:B:89:ARG:NH2	2.11	0.66
1:A:123:ARG:HH11	1:A:123:ARG:CG	2.09	0.65
1:A:324:LEU:HD13	1:A:329:ASN:OD1	1.97	0.65
1:B:90:LEU:CB	1:B:93:PRO:HG3	2.26	0.65
1:A:322:ARG:HH11	1:A:329:ASN:ND2	1.95	0.65
1:B:78:MET:HG3	1:B:142:VAL:HB	1.80	0.64
1:B:236:THR:CB	1:B:265:ILE:HD11	2.26	0.64
1:A:150:GLU:HG3	1:A:151:PRO:HD2	1.80	0.64
1:A:322:ARG:HH11	1:A:329:ASN:HD21	1.45	0.63
1:A:82:LYS:HB2	1:A:132:VAL:CG1	2.29	0.63
1:B:324:LEU:HD13	1:B:329:ASN:OD1	1.98	0.63
1:B:322:ARG:HH11	1:B:329:ASN:ND2	1.96	0.63
1:A:198:VAL:HG21	1:A:203:LEU:HD11	1.80	0.63
1:A:66:SER:HB2	1:A:72:LEU:HD12	1.80	0.63
1:B:289:ARG:HG2	1:B:290:THR:N	2.14	0.62
1:B:264:VAL:HG12	1:B:264:VAL:O	1.99	0.62
1:B:53:ILE:HD13	1:B:124:LEU:HA	1.82	0.62
1:B:304:ARG:NH2	4:B:470:HOH:O	2.29	0.62
1:B:138:THR:HG22	1:B:171:GLY:HA2	1.81	0.62

*Continued on next page...*

*Continued from previous page...*

Atom-1	Atom-2	Interatomic distance (Å)	Clash overlap (Å)
1:B:17:LYS:N	1:B:18:PRO:HD3	2.14	0.62
1:B:322:ARG:NH1	1:B:329:ASN:HD21	1.98	0.62
1:B:200:ASN:HD22	1:B:200:ASN:N	1.87	0.62
1:A:275:LEU:O	1:A:279:GLN:HG3	2.00	0.62
1:B:198:VAL:CG2	1:B:203:LEU:HD11	2.30	0.62
1:B:338:GLY:HA3	1:B:340:GLU:N	2.15	0.61
1:A:322:ARG:NH1	1:A:329:ASN:HD21	1.98	0.61
1:A:71:SER:H	1:B:73:GLN:HE22	1.48	0.60
1:A:79:LYS:HG3	1:A:313:THR:HG22	1.83	0.60
1:B:322:ARG:HH11	1:B:329:ASN:HD21	1.47	0.60
1:A:289:ARG:HG3	1:A:290:THR:N	2.14	0.60
1:B:149:ASN:ND2	1:B:160:ARG:HH22	1.99	0.60
1:A:198:VAL:CG2	1:A:203:LEU:HD11	2.32	0.60
1:A:10:LEU:HD21	1:A:53:ILE:HG13	1.83	0.60
1:B:66:SER:HB2	1:B:72:LEU:HD12	1.84	0.60
1:A:200:ASN:HD22	1:A:200:ASN:N	1.90	0.59
1:B:200:ASN:H	1:B:200:ASN:ND2	1.93	0.59
1:B:79:LYS:HG3	1:B:313:THR:HG22	1.83	0.58
1:B:33:THR:O	1:B:168:CYS:CB	2.49	0.58
1:A:1:ALA:N	4:A:447:HOH:O	2.35	0.58
1:A:215:GLN:OE1	1:B:157:GLN:OE1	2.21	0.58
1:B:239:GLY:HA3	4:B:423:HOH:O	2.03	0.58
1:A:157:GLN:OE1	1:B:215:GLN:OE1	2.22	0.58
1:B:126:GLU:HA	1:B:129:LYS:CD	2.34	0.58
1:B:249:HIS:HB3	1:B:251:ASP:OD2	2.03	0.58
1:A:266:LEU:HD13	1:A:267:PRO:HD2	1.86	0.58
2:B:370:PLP:O3	3:B:371:TRS:H31	2.04	0.58
1:B:72:LEU:HD13	1:B:158:PRO:CG	2.33	0.57
1:B:132:VAL:HG22	1:B:140:LEU:HB2	1.86	0.57
1:A:153:LEU:HB2	1:B:31:GLY:HA3	1.85	0.57
1:B:44:ASN:OD1	1:B:46:LYS:HG2	2.05	0.57
1:B:12:LEU:CD2	1:B:53:ILE:HB	2.35	0.57
1:B:82:LYS:HE3	1:B:132:VAL:HB	1.86	0.57
1:B:150:GLU:OE1	1:B:159:ARG:N	2.35	0.57
1:B:10:LEU:HD12	1:B:51:PRO:HG2	1.86	0.56
1:A:73:GLN:HE21	1:A:204:GLY:HA3	1.70	0.56
1:A:133:PRO:HB2	1:A:138:THR:OG1	2.05	0.56
1:A:73:GLN:HE22	1:B:71:SER:H	1.51	0.56
4:A:462:HOH:O	1:B:205:GLY:HA3	2.04	0.56
1:B:12:LEU:HD23	1:B:53:ILE:HB	1.85	0.56
1:B:243:ILE:HD12	1:B:309:PHE:O	2.05	0.56

*Continued on next page...*

*Continued from previous page...*

Atom-1	Atom-2	Interatomic distance (Å)	Clash overlap (Å)
1:B:28:LEU:HD23	4:B:416:HOH:O	2.06	0.56
1:B:73:GLN:HE21	1:B:204:GLY:HA3	1.69	0.56
1:B:344:ARG:HG3	1:B:344:ARG:HH11	1.69	0.56
1:A:243:ILE:HD12	1:A:309:PHE:O	2.06	0.56
1:A:237:GLU:OE1	2:A:370:PLP:N1	2.39	0.55
1:A:132:VAL:HG12	1:A:133:PRO:O	2.06	0.55
1:B:82:LYS:HB2	1:B:132:VAL:HG11	1.87	0.55
1:B:359:HIS:CE1	1:B:360:GLU:HG3	2.42	0.55
1:A:12:LEU:C	1:A:13:GLU:HG3	2.27	0.55
1:A:185:LEU:HD22	1:A:217:ALA:HA	1.87	0.55
1:B:185:LEU:HD22	1:B:217:ALA:HA	1.89	0.55
1:A:5:PHE:CD2	1:A:41:VAL:HG11	2.41	0.55
1:A:33:THR:O	1:A:168:CYS:CB	2.49	0.55
1:B:266:LEU:HD13	1:B:267:PRO:HD2	1.90	0.54
1:B:242:ASN:O	1:B:310:GLY:HA2	2.08	0.54
1:A:242:ASN:O	1:A:310:GLY:HA2	2.08	0.54
1:B:160:ARG:HG2	1:B:160:ARG:HH11	1.73	0.54
1:A:218:LEU:HD23	1:A:222:CYS:O	2.09	0.53
1:A:72:LEU:HD13	1:A:158:PRO:CG	2.38	0.53
1:A:12:LEU:HB3	1:A:14:MET:CE	2.38	0.53
1:A:200:ASN:H	1:A:200:ASN:ND2	1.97	0.53
1:A:106:ARG:NH1	4:A:453:HOH:O	2.42	0.53
1:B:84:LYS:HD2	1:B:84:LYS:N	2.23	0.53
1:B:126:GLU:HA	1:B:129:LYS:HD3	1.89	0.53
1:B:277:MET:HE1	1:B:348:GLU:HB3	1.91	0.53
1:B:218:LEU:HD23	1:B:222:CYS:O	2.08	0.52
1:B:123:ARG:HH11	1:B:123:ARG:CG	2.23	0.52
1:B:309:PHE:HA	1:B:320:VAL:HG23	1.91	0.52
1:A:10:LEU:HA	1:A:51:PRO:HG2	1.91	0.52
1:B:79:LYS:HG3	1:B:313:THR:CG2	2.40	0.52
1:A:5:PHE:HD2	1:A:48:TRP:CD2	2.28	0.52
1:A:143:ARG:NH2	1:B:70:TYR:OH	2.42	0.52
1:B:89:ARG:HB3	1:B:362:MET:HE3	1.92	0.52
1:A:53:ILE:HD13	1:A:124:LEU:HA	1.92	0.52
1:B:215:GLN:HG2	4:B:474:HOH:O	2.09	0.51
1:B:216:GLU:OE2	1:B:220:ARG:HG2	2.10	0.51
1:B:228:LEU:HD13	1:B:233:HIS:HB3	1.92	0.51
1:B:82:LYS:HB2	1:B:132:VAL:CG1	2.40	0.51
1:B:227:TRP:HE1	1:B:239:GLY:HA2	1.76	0.51
1:B:255:GLU:OE1	1:B:285:ARG:HD2	2.10	0.51
1:A:70:TYR:OH	1:B:143:ARG:NH2	2.43	0.51

*Continued on next page...*

*Continued from previous page...*

Atom-1	Atom-2	Interatomic distance (Å)	Clash overlap (Å)
1:A:247:TRP:O	1:A:254:LEU:HD12	2.10	0.51
1:A:84:LYS:NZ	1:A:356:ILE:HD11	2.26	0.51
1:A:228:LEU:HD13	1:A:233:HIS:HB3	1.93	0.51
1:A:79:LYS:HG3	1:A:313:THR:CG2	2.41	0.50
1:B:23:GLY:C	1:B:25:GLY:H	2.13	0.50
1:B:344:ARG:HH11	1:B:344:ARG:CG	2.25	0.50
1:A:359:HIS:CE1	1:A:361:TRP:CG	3.00	0.50
1:B:23:GLY:N	1:B:26:GLU:HG3	2.26	0.50
1:B:237:GLU:OE1	2:B:370:PLP:N1	2.45	0.50
1:B:264:VAL:O	1:B:265:ILE:HD13	2.12	0.50
1:A:89:ARG:HB3	1:A:362:MET:HE3	1.94	0.50
1:A:325:TYR:O	1:A:328:ARG:HB2	2.12	0.49
1:B:271:ARG:O	1:B:275:LEU:CD2	2.58	0.49
1:A:227:TRP:HE1	1:A:239:GLY:HA2	1.76	0.49
1:B:220:ARG:CZ	1:B:324:LEU:HD21	2.43	0.49
1:A:71:SER:H	1:B:73:GLN:NE2	2.11	0.49
1:A:227:TRP:HB3	4:A:416:HOH:O	2.11	0.49
1:B:184:LEU:CD2	1:B:224:GLN:HB2	2.43	0.49
1:B:198:VAL:HG21	1:B:203:LEU:CD1	2.41	0.49
1:A:23:GLY:C	1:A:25:GLY:H	2.17	0.48
1:A:138:THR:HG22	1:A:171:GLY:HA2	1.95	0.48
1:A:146:LEU:HD12	1:A:162:LEU:O	2.13	0.48
1:A:328:ARG:NH2	4:A:468:HOH:O	2.31	0.48
1:A:20:LYS:HD2	1:A:20:LYS:N	2.16	0.48
1:B:16:GLN:N	1:B:16:GLN:CD	2.67	0.48
1:A:266:LEU:HD13	1:A:267:PRO:CD	2.44	0.48
1:B:277:MET:HE1	1:B:348:GLU:CB	2.44	0.48
1:B:281:TRP:CH2	1:B:344:ARG:HG2	2.48	0.48
1:B:325:TYR:O	1:B:328:ARG:HB2	2.13	0.48
1:A:309:PHE:HA	1:A:320:VAL:HG23	1.95	0.48
1:B:16:GLN:CD	1:B:16:GLN:H	2.16	0.48
1:B:249:HIS:CG	1:B:250:GLU:H	2.32	0.48
1:B:175:PRO:HG2	1:B:178:SER:OG	2.14	0.47
1:A:198:VAL:HG21	1:A:203:LEU:CD1	2.44	0.47
1:B:149:ASN:ND2	1:B:160:ARG:NH2	2.62	0.47
1:A:89:ARG:NH2	4:A:454:HOH:O	2.47	0.47
1:A:106:ARG:HD2	1:A:106:ARG:HA	1.53	0.47
1:A:326:LYS:O	1:A:327:ASP:HB2	2.14	0.47
1:B:93:PRO:HG2	1:B:363:PHE:HB3	1.97	0.47
1:A:198:VAL:HG13	1:A:206:ASN:HD21	1.80	0.47
1:A:277:MET:O	1:A:280:THR:HB	2.15	0.47

*Continued on next page...*

*Continued from previous page...*

Atom-1	Atom-2	Interatomic distance (Å)	Clash overlap (Å)
1:B:20:LYS:HA	1:B:20:LYS:HD3	1.62	0.47
1:A:23:GLY:O	1:A:26:GLU:N	2.48	0.47
1:A:92:ARG:N	1:A:93:PRO:HD3	2.29	0.47
1:B:72:LEU:HD13	1:B:158:PRO:HG2	1.97	0.47
1:B:92:ARG:N	1:B:93:PRO:HD3	2.29	0.47
1:A:262:ASN:OD1	1:A:263:GLY:N	2.45	0.47
1:B:237:GLU:HG3	1:B:265:ILE:CD1	2.42	0.47
1:A:44:ASN:C	1:A:46:LYS:H	2.17	0.47
1:A:39:LEU:HG	1:A:40:MET:N	2.30	0.47
1:B:23:GLY:H	1:B:26:GLU:HG3	1.80	0.47
1:A:271:ARG:O	1:A:275:LEU:CD2	2.56	0.46
1:A:242:ASN:ND2	1:A:268:GLY:HA3	2.30	0.46
1:B:75:PHE:O	1:B:202:LYS:CD	2.62	0.46
1:B:67:SER:HB3	1:B:148:GLY:O	2.16	0.46
1:A:277:MET:HE1	1:A:348:GLU:HB3	1.98	0.46
1:B:106:ARG:HD2	1:B:106:ARG:HA	1.55	0.46
1:A:194:TRP:HB2	1:B:194:TRP:CE3	2.50	0.46
1:B:15:THR:HA	1:B:16:GLN:NE2	2.29	0.46
1:B:19:HIS:N	1:B:19:HIS:CD2	2.83	0.46
1:A:72:LEU:HD13	1:A:158:PRO:HG3	1.96	0.46
1:B:39:LEU:HG	1:B:40:MET:N	2.30	0.46
1:B:266:LEU:HD13	1:B:267:PRO:CD	2.45	0.46
1:A:73:GLN:NE2	1:B:71:SER:H	2.14	0.46
1:A:23:GLY:O	1:A:25:GLY:N	2.49	0.46
1:A:93:PRO:HG2	1:A:363:PHE:HB3	1.97	0.46
1:A:261:LEU:HD23	1:A:265:ILE:HD11	1.98	0.46
1:B:18:PRO:HB2	1:B:20:LYS:HE3	1.98	0.46
1:B:146:LEU:HD12	1:B:162:LEU:O	2.16	0.46
1:B:198:VAL:HG13	1:B:206:ASN:HD21	1.79	0.46
1:A:12:LEU:HD13	1:A:14:MET:CE	2.45	0.46
1:B:72:LEU:HD13	1:B:158:PRO:HG3	1.97	0.46
1:B:100:MET:HA	4:B:435:HOH:O	2.14	0.46
1:A:123:ARG:NH1	1:A:123:ARG:CG	2.76	0.45
1:A:273:SER:O	1:A:277:MET:HG3	2.16	0.45
1:B:242:ASN:ND2	1:B:268:GLY:HA3	2.32	0.45
1:A:67:SER:HB3	1:A:148:GLY:O	2.16	0.45
1:A:27:PRO:O	1:A:28:LEU:CB	2.60	0.45
1:B:23:GLY:O	1:B:25:GLY:N	2.50	0.45
1:A:89:ARG:NH1	1:A:355:GLY:HA3	2.31	0.45
1:A:26:GLU:OE1	1:A:26:GLU:HA	2.16	0.45
1:B:15:THR:HA	1:B:16:GLN:HE22	1.82	0.45

*Continued on next page...*

*Continued from previous page...*

Atom-1	Atom-2	Interatomic distance (Å)	Clash overlap (Å)
1:B:318:CYS:HA	1:B:319:PRO:HD3	1.71	0.45
1:B:108:CYS:HB3	1:B:157:GLN:HG3	1.99	0.45
1:A:338:GLY:HA3	1:A:340:GLU:H	1.79	0.45
1:B:74:LEU:C	1:B:74:LEU:HD22	2.36	0.45
1:B:129:LYS:HE3	1:B:365:VAL:HG12	1.98	0.45
1:B:289:ARG:HD2	4:B:475:HOH:O	2.15	0.45
1:A:17:LYS:N	1:A:18:PRO:HD3	2.32	0.44
1:B:16:GLN:C	1:B:18:PRO:HD3	2.37	0.44
1:B:98:ASP:HA	1:B:114:LYS:HE2	1.99	0.44
1:B:126:GLU:O	1:B:129:LYS:HB2	2.17	0.44
1:B:287:VAL:HG22	1:B:288:GLU:N	2.32	0.44
1:A:249:HIS:CG	1:A:250:GLU:N	2.85	0.44
1:B:248:THR:HB	1:B:304:ARG:HB3	1.99	0.44
1:A:163:LEU:HD23	1:A:164:PHE:N	2.33	0.44
1:B:325:TYR:CE1	1:B:326:LYS:HE2	2.53	0.44
1:B:7:ALA:O	1:B:10:LEU:HB2	2.17	0.44
1:A:80:ALA:HB2	1:A:90:LEU:CD2	2.47	0.44
1:A:108:CYS:HB3	1:A:157:GLN:HG3	1.98	0.44
1:A:207:TYR:CD1	1:A:207:TYR:N	2.86	0.44
1:B:207:TYR:CD1	1:B:207:TYR:N	2.85	0.44
1:A:12:LEU:HB3	1:A:14:MET:HE1	1.99	0.44
1:B:289:ARG:HG2	1:B:290:THR:H	1.81	0.44
1:A:26:GLU:HA	1:A:27:PRO:HD3	1.76	0.43
1:A:277:MET:HE1	1:A:348:GLU:CB	2.47	0.43
1:B:17:LYS:N	1:B:18:PRO:CD	2.80	0.43
1:B:80:ALA:HB2	1:B:90:LEU:CD2	2.48	0.43
1:B:216:GLU:OE2	1:B:220:ARG:CG	2.66	0.43
1:B:259:PRO:HA	1:B:260:PRO:HD3	1.80	0.43
1:A:270:VAL:O	1:A:274:LEU:HG	2.18	0.43
1:B:16:GLN:NE2	1:B:16:GLN:H	2.13	0.43
1:B:198:VAL:CG2	1:B:203:LEU:CD1	2.96	0.43
1:B:233:HIS:CD2	1:B:233:HIS:N	2.87	0.43
1:A:74:LEU:HD13	1:A:146:LEU:O	2.19	0.43
1:A:212:LEU:HD22	1:B:106:ARG:HD2	2.00	0.43
1:A:359:HIS:HE1	1:A:361:TRP:CG	2.37	0.43
1:A:72:LEU:HD23	1:A:72:LEU:HA	1.84	0.43
1:B:76:GLU:HA	1:B:202:LYS:CD	2.48	0.43
1:B:44:ASN:OD1	1:B:46:LYS:CG	2.67	0.43
1:A:44:ASN:HA	1:A:159:ARG:O	2.18	0.43
1:A:238:VAL:HG23	1:A:243:ILE:HB	2.01	0.43
1:A:49:GLY:HA3	4:A:446:HOH:O	2.19	0.42

*Continued on next page...*

*Continued from previous page...*

Atom-1	Atom-2	Interatomic distance (Å)	Clash overlap (Å)
1:B:84:LYS:H	1:B:84:LYS:CD	2.21	0.42
1:B:126:GLU:HA	1:B:129:LYS:HD2	2.00	0.42
1:A:198:VAL:CG2	1:A:203:LEU:CD1	2.98	0.42
1:A:220:ARG:HG3	1:A:220:ARG:O	2.20	0.42
1:B:79:LYS:HE3	1:B:313:THR:O	2.19	0.42
1:A:74:LEU:C	1:A:74:LEU:HD22	2.39	0.42
1:A:106:ARG:NH2	1:B:209:PRO:O	2.53	0.42
1:B:1:ALA:HA	1:B:111:SER:OG	2.18	0.42
1:B:85:ASP:C	1:B:86:GLN:HG2	2.38	0.42
1:A:89:ARG:HB3	1:A:362:MET:CE	2.49	0.42
1:B:12:LEU:HD21	1:B:53:ILE:HD12	2.02	0.42
1:B:89:ARG:HB3	1:B:362:MET:CE	2.49	0.42
1:B:341:LEU:HD11	1:B:345:PHE:CE1	2.55	0.42
1:B:238:VAL:HG23	1:B:243:ILE:HB	2.01	0.42
1:B:28:LEU:HA	1:B:28:LEU:HD23	1.78	0.42
1:B:249:HIS:CG	1:B:250:GLU:N	2.88	0.42
1:A:318:CYS:HA	1:A:319:PRO:HD3	1.72	0.42
1:B:270:VAL:O	1:B:274:LEU:HG	2.19	0.42
1:B:74:LEU:HD13	1:B:146:LEU:O	2.20	0.42
1:B:101:LEU:HD12	1:B:101:LEU:HA	1.81	0.41
1:B:163:LEU:HD23	1:B:164:PHE:N	2.35	0.41
1:B:195:VAL:HG23	1:B:229:TYR:OH	2.20	0.41
1:A:31:GLY:HA3	1:B:153:LEU:HB2	2.01	0.41
1:B:229:TYR:O	1:B:234:GLN:HG2	2.20	0.41
1:A:249:HIS:CG	1:A:250:GLU:H	2.38	0.41
1:B:237:GLU:HB3	1:B:241:MET:O	2.20	0.41
1:A:12:LEU:HB3	1:A:14:MET:HE2	2.01	0.41
1:B:10:LEU:CD1	1:B:51:PRO:HG2	2.48	0.41
1:B:277:MET:O	1:B:280:THR:HB	2.21	0.41
1:A:70:TYR:CZ	1:A:155:VAL:HG22	2.55	0.41
1:A:80:ALA:HB2	1:A:90:LEU:HD23	2.02	0.41
1:A:287:VAL:HG11	1:A:289:ARG:NH2	2.36	0.41
1:B:181:PRO:HA	1:B:319:PRO:O	2.20	0.41
1:B:185:LEU:CD2	1:B:217:ALA:HA	2.51	0.41
1:A:79:LYS:HD3	1:A:139:SER:OG	2.21	0.41
1:A:184:LEU:CD2	1:A:224:GLN:HB2	2.51	0.41
1:A:204:GLY:HA2	1:B:69:HIS:O	2.19	0.41
1:A:233:HIS:CD2	1:A:233:HIS:N	2.88	0.41
1:B:326:LYS:O	1:B:327:ASP:HB2	2.19	0.41
1:A:30:PHE:CD2	1:A:31:GLY:N	2.89	0.41
1:A:90:LEU:HB2	1:A:93:PRO:HG3	2.00	0.41

*Continued on next page...*



Continued from previous page...

Atom-1	Atom-2	Interatomic distance (Å)	Clash overlap (Å)
1:A:97:MET:HB3	1:A:114:LYS:HB3	2.03	0.41
1:A:219:LYS:O	1:A:219:LYS:HG3	2.20	0.41
1:B:29:VAL:O	1:B:32:LYS:HB2	2.20	0.41
1:B:192:ARG:HB2	1:B:227:TRP:CE3	2.56	0.41
1:B:275:LEU:N	1:B:275:LEU:HD22	2.36	0.41
1:B:332:ILE:HA	1:B:333:PRO:HD3	1.81	0.41
1:A:275:LEU:N	1:A:275:LEU:HD22	2.35	0.41
1:B:80:ALA:HB2	1:B:90:LEU:HD23	2.03	0.41
1:B:87:GLN:NE2	1:B:88:VAL:O	2.51	0.41
1:B:273:SER:O	1:B:277:MET:HG3	2.20	0.40
1:A:178:SER:HB3	4:A:405:HOH:O	2.21	0.40
1:A:194:TRP:CB	1:B:194:TRP:CE3	3.05	0.40
1:B:266:LEU:HA	1:B:267:PRO:HD3	1.91	0.40
1:A:74:LEU:HD22	1:A:74:LEU:O	2.21	0.40
1:A:185:LEU:CD2	1:A:217:ALA:HA	2.50	0.40
1:A:209:PRO:O	1:B:106:ARG:NH2	2.54	0.40
1:A:240:THR:HB	3:A:371:TRS:H21	2.03	0.40
1:B:264:VAL:O	1:B:264:VAL:CG1	2.68	0.40
1:A:234:GLN:H	1:A:234:GLN:HG2	1.76	0.40
1:A:359:HIS:CE1	1:A:360:GLU:HG3	2.56	0.40

There are no symmetry-related clashes.

## 5.3 Torsion angles [i](#)

### 5.3.1 Protein backbone [i](#)

In the following table, the Percentiles column shows the percent Ramachandran outliers of the chain as a percentile score with respect to all X-ray entries followed by that with respect to entries of similar resolution.

The Analysed column shows the number of residues for which the backbone conformation was analysed, and the total number of residues.

Mol	Chain	Analysed	Favoured	Allowed	Outliers	Percentiles	
1	A	363/365 (100%)	331 (91%)	28 (8%)	4 (1%)	12	8
1	B	363/365 (100%)	338 (93%)	21 (6%)	4 (1%)	12	8
All	All	726/730 (100%)	669 (92%)	49 (7%)	8 (1%)	12	8

All (8) Ramachandran outliers are listed below:

Mol	Chain	Res	Type
1	A	2	SER
1	A	30	PHE
1	A	28	LEU
1	B	24	PRO
1	A	24	PRO
1	B	4	SER
1	B	2	SER
1	B	21	LYS

### 5.3.2 Protein sidechains [i](#)

In the following table, the Percentiles column shows the percent sidechain outliers of the chain as a percentile score with respect to all X-ray entries followed by that with respect to entries of similar resolution.

The Analysed column shows the number of residues for which the sidechain conformation was analysed, and the total number of residues.

Mol	Chain	Analysed	Rotameric	Outliers	Percentiles
1	A	316/316 (100%)	297 (94%)	19 (6%)	16 15
1	B	316/316 (100%)	292 (92%)	24 (8%)	11 9
All	All	632/632 (100%)	589 (93%)	43 (7%)	13 11

All (43) residues with a non-rotameric sidechain are listed below:

Mol	Chain	Res	Type
1	A	20	LYS
1	A	46	LYS
1	A	61	LEU
1	A	74	LEU
1	A	84	LYS
1	A	106	ARG
1	A	123	ARG
1	A	143	ARG
1	A	168	CYS
1	A	173	TYR
1	A	200	ASN
1	A	224	GLN
1	A	232	ASP
1	A	247	TRP
1	A	266	LEU
1	A	289	ARG

*Continued on next page...*

*Continued from previous page...*

<b>Mol</b>	<b>Chain</b>	<b>Res</b>	<b>Type</b>
1	A	317	VAL
1	A	329	ASN
1	A	360	GLU
1	B	6	LYS
1	B	9	ASP
1	B	16	GLN
1	B	17	LYS
1	B	24	PRO
1	B	45	ASP
1	B	61	LEU
1	B	74	LEU
1	B	84	LYS
1	B	86	GLN
1	B	87	GLN
1	B	106	ARG
1	B	123	ARG
1	B	143	ARG
1	B	168	CYS
1	B	200	ASN
1	B	220	ARG
1	B	224	GLN
1	B	232	ASP
1	B	247	TRP
1	B	266	LEU
1	B	317	VAL
1	B	329	ASN
1	B	360	GLU

Sometimes sidechains can be flipped to improve hydrogen bonding and reduce clashes. All (22) such sidechains are listed below:

<b>Mol</b>	<b>Chain</b>	<b>Res</b>	<b>Type</b>
1	A	50	GLN
1	A	73	GLN
1	A	96	ASN
1	A	157	GLN
1	A	200	ASN
1	A	206	ASN
1	A	224	GLN
1	A	242	ASN
1	A	295	GLN
1	A	329	ASN
1	B	16	GLN

*Continued on next page...*

*Continued from previous page...*

Mol	Chain	Res	Type
1	B	73	GLN
1	B	87	GLN
1	B	96	ASN
1	B	157	GLN
1	B	200	ASN
1	B	206	ASN
1	B	224	GLN
1	B	242	ASN
1	B	272	GLN
1	B	295	GLN
1	B	329	ASN

### 5.3.3 RNA [i](#)

There are no RNA molecules in this entry.

## 5.4 Non-standard residues in protein, DNA, RNA chains [i](#)

There are no non-standard protein/DNA/RNA residues in this entry.

## 5.5 Carbohydrates [i](#)

There are no oligosaccharides in this entry.

## 5.6 Ligand geometry [i](#)

4 ligands are modelled in this entry.

In the following table, the Counts columns list the number of bonds (or angles) for which Mogul statistics could be retrieved, the number of bonds (or angles) that are observed in the model and the number of bonds (or angles) that are defined in the Chemical Component Dictionary. The Link column lists molecule types, if any, to which the group is linked. The Z score for a bond length (or angle) is the number of standard deviations the observed value is removed from the expected value. A bond length (or angle) with  $|Z| > 2$  is considered an outlier worth inspection. RMSZ is the root-mean-square of all Z scores of the bond lengths (or angles).

Mol	Type	Chain	Res	Link	Bond lengths			Bond angles		
					Counts	RMSZ	# Z  > 2	Counts	RMSZ	# Z  > 2
3	TRS	A	371	2	4,6,7	1.27	1 (25%)	5,8,9	1.26	0
3	TRS	B	371	2	4,6,7	0.59	0	5,8,9	5.30	4 (80%)

Mol	Type	Chain	Res	Link	Bond lengths			Bond angles		
					Counts	RMSZ	# Z  > 2	Counts	RMSZ	# Z  > 2
2	PLP	A	370	3	15,15,16	2.00	5 (33%)	21,22,23	1.45	4 (19%)
2	PLP	B	370	3	15,15,16	2.12	6 (40%)	21,22,23	1.28	2 (9%)

In the following table, the Chirals column lists the number of chiral outliers, the number of chiral centers analysed, the number of these observed in the model and the number defined in the Chemical Component Dictionary. Similar counts are reported in the Torsion and Rings columns. '-' means no outliers of that kind were identified.

Mol	Type	Chain	Res	Link	Chirals	Torsions	Rings
3	TRS	A	371	2	-	3/6/6/9	-
3	TRS	B	371	2	-	6/6/6/9	-
2	PLP	A	370	3	-	2/6/6/8	0/1/1/1
2	PLP	B	370	3	-	0/6/6/8	0/1/1/1

All (12) bond length outliers are listed below:

Mol	Chain	Res	Type	Atoms	Z	Observed(Å)	Ideal(Å)
2	B	370	PLP	C4A-C4	4.44	1.60	1.51
2	A	370	PLP	C4A-C4	4.30	1.60	1.51
2	B	370	PLP	C5-C4	3.58	1.44	1.40
2	A	370	PLP	C2-N1	3.37	1.39	1.33
2	B	370	PLP	C2-N1	3.01	1.39	1.33
2	A	370	PLP	C2A-C2	2.79	1.54	1.50
2	A	370	PLP	C5-C4	2.61	1.43	1.40
2	B	370	PLP	C6-N1	2.55	1.39	1.34
3	A	371	TRS	C-N	-2.24	1.41	1.49
2	B	370	PLP	C2A-C2	2.19	1.53	1.50
2	B	370	PLP	C5A-C5	2.05	1.56	1.50
2	A	370	PLP	C6-N1	2.00	1.38	1.34

All (10) bond angle outliers are listed below:

Mol	Chain	Res	Type	Atoms	Z	Observed(°)	Ideal(°)
3	B	371	TRS	C2-C-N	-7.36	89.35	108.16
3	B	371	TRS	C3-C-N	-7.03	90.19	108.16
3	B	371	TRS	C1-C-C2	5.58	128.25	109.94
2	B	370	PLP	O4P-C5A-C5	3.87	116.60	109.36
2	A	370	PLP	O4P-C5A-C5	3.76	116.40	109.36
2	A	370	PLP	C6-C5-C4	2.57	120.20	118.10
2	B	370	PLP	O3P-P-O1P	2.39	120.13	110.83
2	A	370	PLP	O3P-P-O1P	2.36	120.03	110.83

Continued on next page...

Continued from previous page...

Mol	Chain	Res	Type	Atoms	Z	Observed(°)	Ideal(°)
2	A	370	PLP	C5-C6-N1	-2.31	120.08	123.83
3	B	371	TRS	C3-C-C2	2.11	116.03	110.60

There are no chirality outliers.

All (11) torsion outliers are listed below:

Mol	Chain	Res	Type	Atoms
2	A	370	PLP	C5A-O4P-P-O1P
3	A	371	TRS	C1-C-C3-O3
3	A	371	TRS	N-C-C3-O3
3	B	371	TRS	N-C-C2-O2
3	B	371	TRS	N-C-C3-O3
2	A	370	PLP	C5A-O4P-P-O2P
3	A	371	TRS	C2-C-C3-O3
3	B	371	TRS	C3-C-C2-O2
3	B	371	TRS	C2-C-C3-O3
3	B	371	TRS	C1-C-C2-O2
3	B	371	TRS	C1-C-C3-O3

There are no ring outliers.

4 monomers are involved in 5 short contacts:

Mol	Chain	Res	Type	Clashes	Symm-Clashes
3	A	371	TRS	1	0
3	B	371	TRS	2	0
2	A	370	PLP	1	0
2	B	370	PLP	2	0

## 5.7 Other polymers [i](#)

There are no such residues in this entry.

## 5.8 Polymer linkage issues [i](#)

There are no chain breaks in this entry.

## 6 Fit of model and data [i](#)

### 6.1 Protein, DNA and RNA chains [i](#)

In the following table, the column labelled ‘#RSRZ> 2’ contains the number (and percentage) of RSRZ outliers, followed by percent RSRZ outliers for the chain as percentile scores relative to all X-ray entries and entries of similar resolution. The OWAB column contains the minimum, median, 95<sup>th</sup> percentile and maximum values of the occupancy-weighted average B-factor per residue. The column labelled ‘Q< 0.9’ lists the number of (and percentage) of residues with an average occupancy less than 0.9.

Mol	Chain	Analysed	<RSRZ>	#RSRZ>2	OWAB(Å <sup>2</sup> )	Q<0.9
1	A	365/365 (100%)	-1.53	0 100 100	10, 19, 34, 48	0
1	B	365/365 (100%)	-1.54	0 100 100	6, 19, 32, 52	0
All	All	730/730 (100%)	-1.53	0 100 100	6, 19, 34, 52	0

There are no RSRZ outliers to report.

### 6.2 Non-standard residues in protein, DNA, RNA chains [i](#)

There are no non-standard protein/DNA/RNA residues in this entry.

### 6.3 Carbohydrates [i](#)

There are no monosaccharides in this entry.

### 6.4 Ligands [i](#)

In the following table, the Atoms column lists the number of modelled atoms in the group and the number defined in the chemical component dictionary. The B-factors column lists the minimum, median, 95<sup>th</sup> percentile and maximum values of B factors of atoms in the group. The column labelled ‘Q< 0.9’ lists the number of atoms with occupancy less than 0.9.

Mol	Type	Chain	Res	Atoms	RSCC	RSR	B-factors(Å <sup>2</sup> )	Q<0.9
3	TRS	A	371	7/8	0.99	0.04	21,27,28,30	0
3	TRS	B	371	7/8	0.99	0.04	27,30,32,34	0
2	PLP	A	370	15/16	1.00	0.02	7,16,20,21	0
2	PLP	B	370	15/16	1.00	0.02	11,20,22,24	0

## 6.5 Other polymers [i](#)

There are no such residues in this entry.