



wwPDB X-ray Structure Validation Summary Report ⓘ

Aug 5, 2024 – 10:26 am BST

PDB ID : 9ENJ
Title : L-amino acid oxidase 4 (HcLAAO4) from the fungus Hebeloma cylindrosporum
in complex with L-glutamate
Authors : Gilzer, D.; Koopmeiners, S.; Fischer von Mollard, G.; Niemann, H.H.
Deposited on : 2024-03-13
Resolution : 2.10 Å (reported)

This is a wwPDB X-ray Structure Validation Summary Report for a publicly released PDB entry.

We welcome your comments at validation@mail.wwpdb.org

A user guide is available at

<https://www.wwpdb.org/validation/2017/XrayValidationReportHelp>

with specific help available everywhere you see the ⓘ symbol.

The types of validation reports are described at

<http://www.wwpdb.org/validation/2017/FAQs#types>.

The following versions of software and data (see [references ⓘ](#)) were used in the production of this report:

MolProbity : 4.02b-467
Mogul : 1.8.4, CSD as541be (2020)
Xtriage (Phenix) : 1.13
EDS : 2.37.1
buster-report : 1.1.7 (2018)
Percentile statistics : 20191225.v01 (using entries in the PDB archive December 25th 2019)
Refmac : 5.8.0158
CCP4 : 7.0.044 (Gargrove)
Ideal geometry (proteins) : Engh & Huber (2001)
Ideal geometry (DNA, RNA) : Parkinson et al. (1996)
Validation Pipeline (wwPDB-VP) : 2.37.1

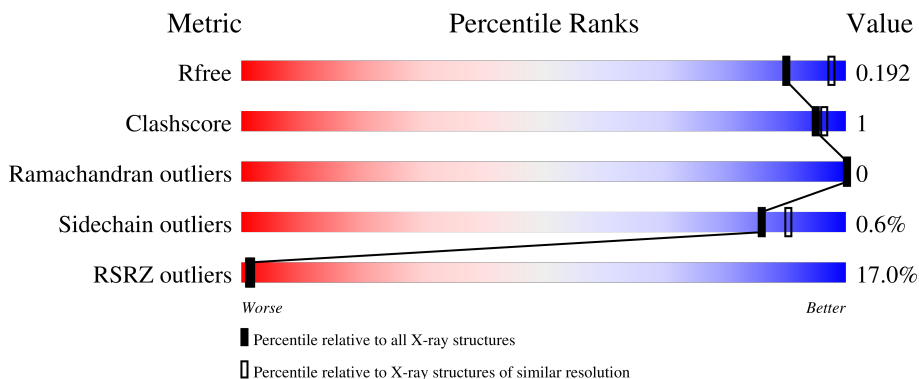
1 Overall quality at a glance

The following experimental techniques were used to determine the structure:

X-RAY DIFFRACTION

The reported resolution of this entry is 2.10 Å.

Percentile scores (ranging between 0-100) for global validation metrics of the entry are shown in the following graphic. The table shows the number of entries on which the scores are based.



Metric	Whole archive (#Entries)	Similar resolution (#Entries, resolution range(Å))
R_{free}	130704	5197 (2.10-2.10)
Clashscore	141614	5710 (2.10-2.10)
Ramachandran outliers	138981	5647 (2.10-2.10)
Sidechain outliers	138945	5648 (2.10-2.10)
RSRZ outliers	127900	5083 (2.10-2.10)

The table below summarises the geometric issues observed across the polymeric chains and their fit to the electron density. The red, orange, yellow and green segments of the lower bar indicate the fraction of residues that contain outliers for ≥ 3 , 2, 1 and 0 types of geometric quality criteria respectively. A grey segment represents the fraction of residues that are not modelled. The numeric value for each fraction is indicated below the corresponding segment, with a dot representing fractions $\leq 5\%$. The upper red bar (where present) indicates the fraction of residues that have poor fit to the electron density. The numeric value is given above the bar.

Mol	Chain	Length	Quality of chain
1	A	562	 16% 92% 5%
1	B	562	 16% 91% 6%
1	C	562	 16% 93% 5%
1	D	562	 17% 92% 5%

The following table lists non-polymeric compounds, carbohydrate monomers and non-standard

residues in protein, DNA, RNA chains that are outliers for geometric or electron-density-fit criteria:

Mol	Type	Chain	Res	Chirality	Geometry	Clashes	Electron density
4	SO4	A	709	-	-	-	X
4	SO4	B	715	-	-	-	X
4	SO4	C	708	-	-	-	X
4	SO4	C	709	-	-	-	X
4	SO4	C	714	-	-	-	X
4	SO4	D	712	-	-	-	X

2 Entry composition [i](#)

There are 7 unique types of molecules in this entry. The entry contains 35332 atoms, of which 16799 are hydrogens and 0 are deuteriums.

In the tables below, the ZeroOcc column contains the number of atoms modelled with zero occupancy, the AltConf column contains the number of residues with at least one atom in alternate conformation and the Trace column contains the number of residues modelled with at most 2 atoms.

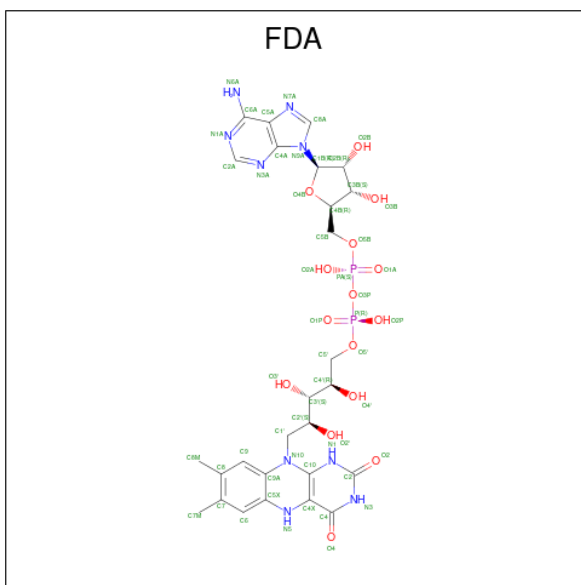
- Molecule 1 is a protein called L-amino acid oxidase 4.

Mol	Chain	Residues	Atoms						ZeroOcc	AltConf	Trace
			Total	C	H	N	O	S			
1	A	532	8343	2725	4113	711	783	11	0	6	0
1	B	531	8311	2718	4092	707	783	11	0	5	0
1	C	534	8404	2746	4140	712	795	11	0	9	0
1	D	533	8319	2716	4098	711	783	11	0	5	0

There are 8 discrepancies between the modelled and reference sequences:

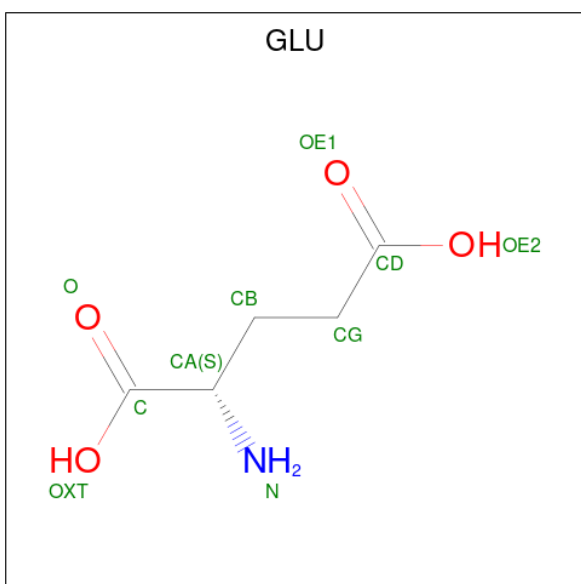
Chain	Residue	Modelled	Actual	Comment	Reference
A	474	ALA	LYS	engineered mutation	UNP S4S6Z0
A	475	ALA	LYS	engineered mutation	UNP S4S6Z0
B	474	ALA	LYS	engineered mutation	UNP S4S6Z0
B	475	ALA	LYS	engineered mutation	UNP S4S6Z0
C	474	ALA	LYS	engineered mutation	UNP S4S6Z0
C	475	ALA	LYS	engineered mutation	UNP S4S6Z0
D	474	ALA	LYS	engineered mutation	UNP S4S6Z0
D	475	ALA	LYS	engineered mutation	UNP S4S6Z0

- Molecule 2 is DIHYDROFLAVINE-ADENINE DINUCLEOTIDE (three-letter code: FDA) (formula: C₂₇H₃₅N₉O₁₅P₂) (labeled as "Ligand of Interest" by depositor).



Mol	Chain	Residues	Atoms					ZeroOcc	AltConf	
			Total	C	H	N	O			P
2	A	1	Total	C	H	N	O	P	0	0
85	27	32	9	15	2					
2	B	1	Total	C	H	N	O	P	0	0
85	27	32	9	15	2					
2	C	1	Total	C	H	N	O	P	0	0
85	27	32	9	15	2					
2	D	1	Total	C	H	N	O	P	0	0
85	27	32	9	15	2					

- Molecule 3 is GLUTAMIC ACID (three-letter code: GLU) (formula: $C_5H_9NO_4$) (labeled as "Ligand of Interest" by depositor).



Mol	Chain	Residues	Atoms				ZeroOcc	AltConf	
3	A	1	Total	C	H	N	O	0	0
			15	5	5	1	4		
3	B	1	Total	C	H	N	O	0	0
			15	5	5	1	4		
3	C	1	Total	C	H	N	O	0	0
			15	5	5	1	4		
3	D	1	Total	C	H	N	O	0	0
			15	5	5	1	4		

- Molecule 4 is SULFATE ION (three-letter code: SO4) (formula: O₄S).



Mol	Chain	Residues	Atoms		ZeroOcc	AltConf
4	A	1	Total	O S	0	0
			5	4 1		
4	A	1	Total	O S	0	0
			5	4 1		
4	A	1	Total	O S	0	0
			5	4 1		
4	A	1	Total	O S	0	0
			5	4 1		
4	A	1	Total	O S	0	0
			5	4 1		
4	A	1	Total	O S	0	0
			5	4 1		

Continued on next page...

Continued from previous page...

Mol	Chain	Residues	Atoms			ZeroOcc	AltConf
4	A	1	Total	O	S	0	0
			5	4	1		
4	A	1	Total	O	S	0	0
			5	4	1		
4	A	1	Total	O	S	0	0
			5	4	1		
4	A	1	Total	O	S	0	0
			5	4	1		
4	A	1	Total	O	S	0	0
			5	4	1		
4	B	1	Total	O	S	0	0
			5	4	1		
4	B	1	Total	O	S	0	0
			5	4	1		
4	B	1	Total	O	S	0	0
			5	4	1		
4	B	1	Total	O	S	0	0
			5	4	1		
4	B	1	Total	O	S	0	0
			5	4	1		
4	B	1	Total	O	S	0	0
			5	4	1		
4	B	1	Total	O	S	0	0
			5	4	1		
4	B	1	Total	O	S	0	0
			5	4	1		
4	B	1	Total	O	S	0	0
			5	4	1		
4	B	1	Total	O	S	0	0
			5	4	1		
4	B	1	Total	O	S	0	0
			5	4	1		
4	C	1	Total	O	S	0	0
			5	4	1		

Continued on next page...

Continued from previous page...

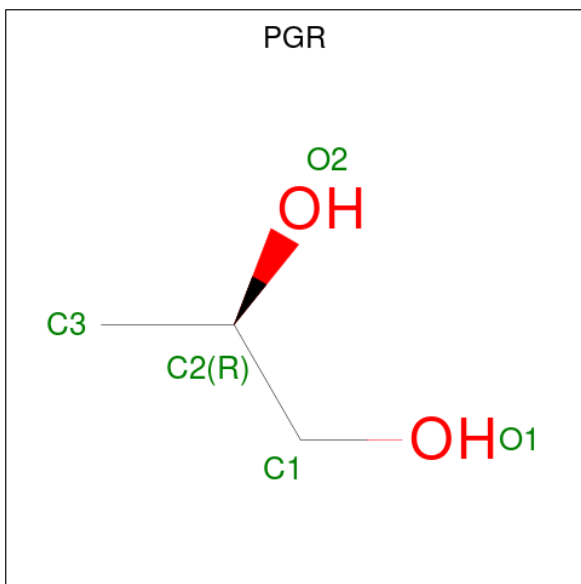
Mol	Chain	Residues	Atoms			ZeroOcc	AltConf
			Total	O	S		
4	C	1	5	4	1	0	0
4	C	1	5	4	1	0	0
4	C	1	5	4	1	0	0
4	C	1	5	4	1	0	0
4	C	1	5	4	1	0	0
4	C	1	5	4	1	0	0
4	C	1	5	4	1	0	0
4	C	1	5	4	1	0	0
4	C	1	5	4	1	0	0
4	C	1	5	4	1	0	0
4	C	1	5	4	1	0	0
4	C	1	5	4	1	0	0
4	D	1	5	4	1	0	0
4	D	1	5	4	1	0	0
4	D	1	5	4	1	0	0
4	D	1	5	4	1	0	0
4	D	1	5	4	1	0	0
4	D	1	5	4	1	0	0
4	D	1	5	4	1	0	0
4	D	1	5	4	1	0	0
4	D	1	5	4	1	0	0
4	D	1	5	4	1	0	0

Continued on next page...

Continued from previous page...

Mol	Chain	Residues	Atoms			ZeroOcc	AltConf
			Total	O	S		
4	D	1	5	4	1	0	0

- Molecule 5 is R-1,2-PROPANEDIOL (three-letter code: PGR) (formula: C₃H₈O₂).



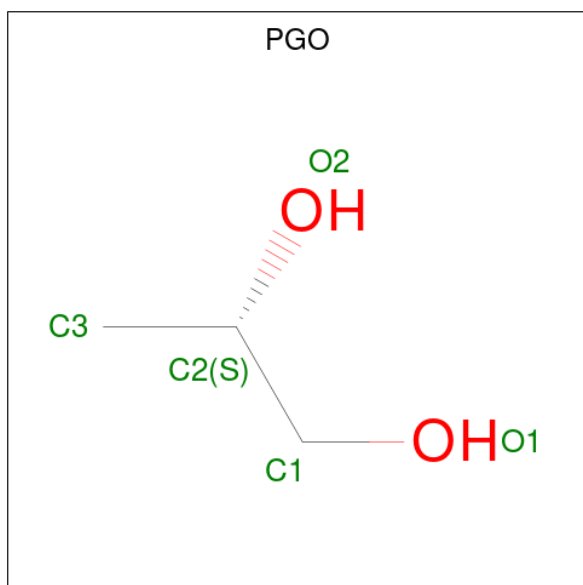
Mol	Chain	Residues	Atoms				ZeroOcc	AltConf
			Total	C	H	O		
5	A	1	13	3	8	2	0	0
5	A	1	13	3	8	2	0	0
5	A	1	13	3	8	2	0	0
5	B	1	13	3	8	2	0	0
5	B	1	13	3	8	2	0	0
5	C	1	13	3	8	2	0	0
5	C	1	13	3	8	2	0	0
5	C	1	13	3	8	2	0	0
5	D	1	13	3	8	2	0	0
5	D	1	13	3	8	2	0	0

Continued on next page...

Continued from previous page...

Mol	Chain	Residues	Atoms				ZeroOcc	AltConf
5	D	1	Total	C	H	O	0	0
			13	3	8	2		
5	D	1	Total	C	H	O	0	0
			13	3	8	2		

- Molecule 6 is S-1,2-PROPANEDIOL (three-letter code: PGO) (formula: C₃H₈O₂).



Mol	Chain	Residues	Atoms				ZeroOcc	AltConf
6	A	1	Total	C	H	O	0	0
			13	3	8	2		
6	A	1	Total	C	H	O	0	0
			13	3	8	2		
6	A	1	Total	C	H	O	0	0
			13	3	8	2		
6	A	1	Total	C	H	O	0	0
			13	3	8	2		
6	B	1	Total	C	H	O	0	0
			13	3	8	2		
6	B	1	Total	C	H	O	0	0
			13	3	8	2		
6	B	1	Total	C	H	O	0	0
			13	3	8	2		
6	B	1	Total	C	H	O	0	0
			13	3	8	2		

Continued on next page...

Continued from previous page...

Mol	Chain	Residues	Atoms				ZeroOcc	AltConf
6	C	1	Total	C	H	O	0	0
			13	3	8	2		
6	C	1	Total	C	H	O	0	0
			13	3	8	2		
6	D	1	Total	C	H	O	0	0
			13	3	8	2		
6	D	1	Total	C	H	O	0	0
			13	3	8	2		
6	D	1	Total	C	H	O	0	0
			13	3	8	2		

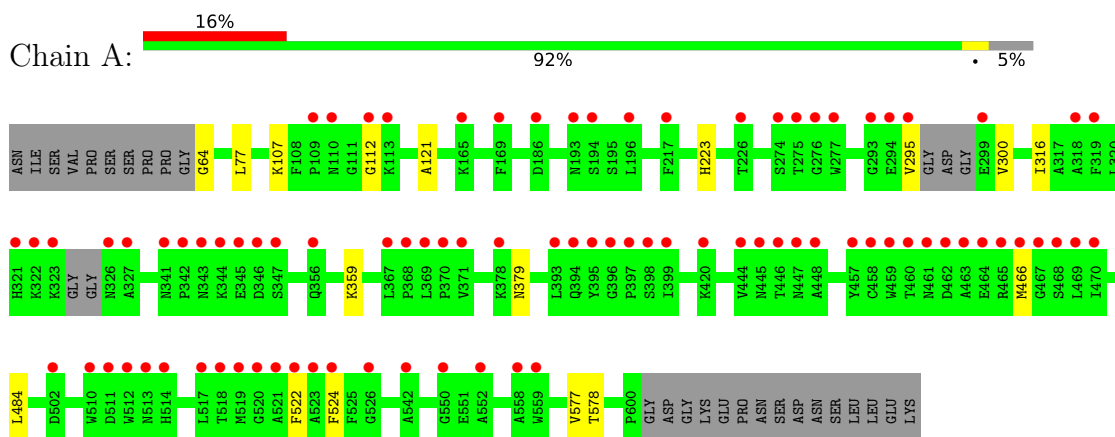
- Molecule 7 is water.

Mol	Chain	Residues	Atoms		ZeroOcc	AltConf
7	A	269	Total	O	0	4
			273	273		
7	B	261	Total	O	0	4
			264	264		
7	C	217	Total	O	0	2
			218	218		
7	D	204	Total	O	0	3
			207	207		

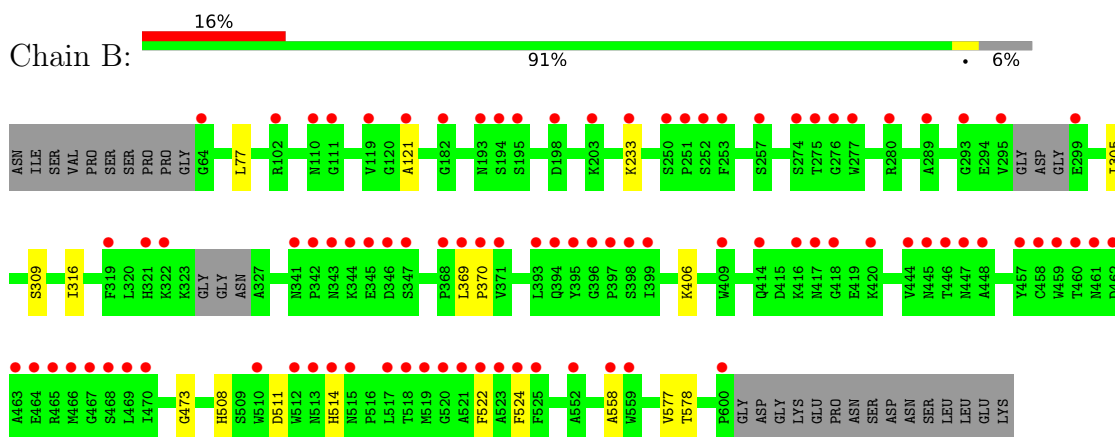
3 Residue-property plots [i](#)

These plots are drawn for all protein, RNA, DNA and oligosaccharide chains in the entry. The first graphic for a chain summarises the proportions of the various outlier classes displayed in the second graphic. The second graphic shows the sequence view annotated by issues in geometry and electron density. Residues are color-coded according to the number of geometric quality criteria for which they contain at least one outlier: green = 0, yellow = 1, orange = 2 and red = 3 or more. A red dot above a residue indicates a poor fit to the electron density ($RSRZ > 2$). Stretches of 2 or more consecutive residues without any outlier are shown as a green connector. Residues present in the sample, but not in the model, are shown in grey.

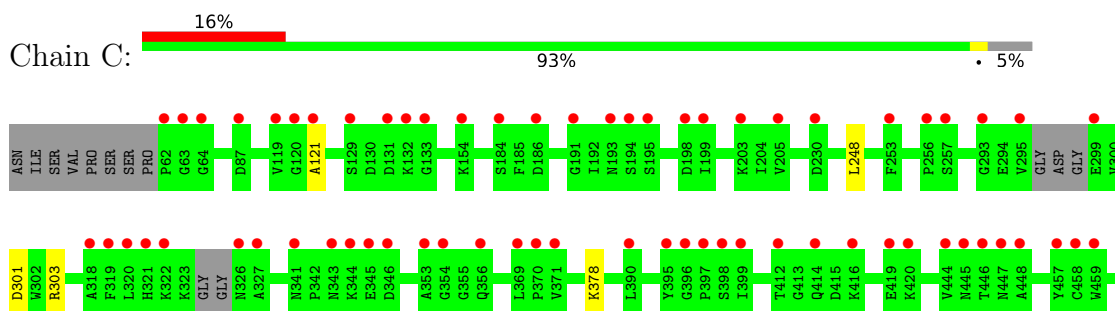
- Molecule 1: L-amino acid oxidase 4

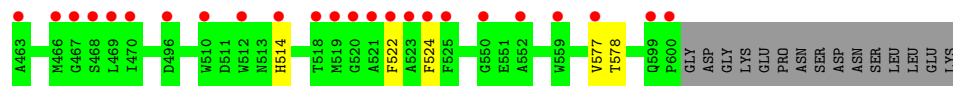


- Molecule 1: L-amino acid oxidase 4



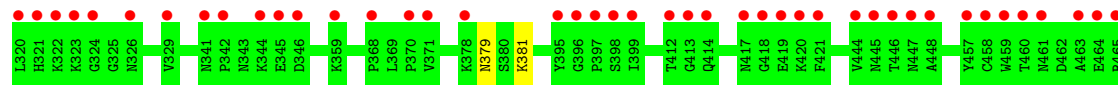
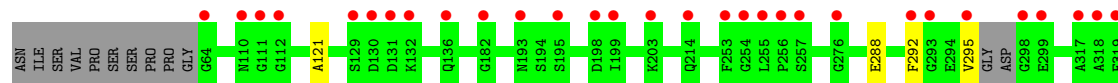
- Molecule 1: L-amino acid oxidase 4





- Molecule 1: L-amino acid oxidase 4

Chain D: 17% 92% 5%



4 Data and refinement statistics

Property	Value	Source
Space group	P 1 21 1	Depositor
Cell constants a, b, c, α , β , γ	84.76Å 130.79Å 107.30Å 90.00° 95.66° 90.00°	Depositor
Resolution (Å)	40.62 – 2.10 44.45 – 2.10	Depositor EDS
% Data completeness (in resolution range)	99.2 (40.62-2.10) 99.2 (44.45-2.10)	Depositor EDS
R_{merge}	(Not available)	Depositor
R_{sym}	(Not available)	Depositor
$\langle I/\sigma(I) \rangle$ ¹	1.44 (at 2.10Å)	Xtrriage
Refinement program	PHENIX 1.21_5207	Depositor
R, R_{free}	0.174 , 0.195 0.172 , 0.192	Depositor DCC
R_{free} test set	6716 reflections (5.00%)	wwPDB-VP
Wilson B-factor (Å ²)	39.3	Xtrriage
Anisotropy	0.091	Xtrriage
Bulk solvent k_{sol} (e/Å ³), B_{sol} (Å ²)	0.41 , 46.6	EDS
L-test for twinning ²	$\langle L \rangle = 0.50$, $\langle L^2 \rangle = 0.33$	Xtrriage
Estimated twinning fraction	No twinning to report.	Xtrriage
F_o, F_c correlation	0.96	EDS
Total number of atoms	35332	wwPDB-VP
Average B, all atoms (Å ²)	48.0	wwPDB-VP

Xtrriage's analysis on translational NCS is as follows: *The largest off-origin peak in the Patterson function is 3.56% of the height of the origin peak. No significant pseudotranslation is detected.*

¹Intensities estimated from amplitudes.

²Theoretical values of $\langle |L| \rangle$, $\langle L^2 \rangle$ for acentric reflections are 0.5, 0.333 respectively for untwinned datasets, and 0.375, 0.2 for perfectly twinned datasets.

5 Model quality [i](#)

5.1 Standard geometry [i](#)

Bond lengths and bond angles in the following residue types are not validated in this section: FDA, PGO, SO4, PGR

The Z score for a bond length (or angle) is the number of standard deviations the observed value is removed from the expected value. A bond length (or angle) with $|Z| > 5$ is considered an outlier worth inspection. RMSZ is the root-mean-square of all Z scores of the bond lengths (or angles).

Mol	Chain	Bond lengths		Bond angles	
		RMSZ	# Z >5	RMSZ	# Z >5
1	A	0.25	0/4368	0.47	0/5938
1	B	0.26	0/4354	0.48	1/5919 (0.0%)
1	C	0.25	0/4415	0.47	0/6001
1	D	0.25	0/4356	0.48	0/5921
All	All	0.25	0/17493	0.48	1/23779 (0.0%)

There are no bond length outliers.

All (1) bond angle outliers are listed below:

Mol	Chain	Res	Type	Atoms	Z	Observed(°)	Ideal(°)
1	B	233	LYS	CD-CE-NZ	5.64	124.68	111.70

There are no chirality outliers.

There are no planarity outliers.

5.2 Too-close contacts [i](#)

In the following table, the Non-H and H(model) columns list the number of non-hydrogen atoms and hydrogen atoms in the chain respectively. The H(added) column lists the number of hydrogen atoms added and optimized by MolProbity. The Clashes column lists the number of clashes within the asymmetric unit, whereas Symm-Clashes lists symmetry-related clashes.

Mol	Chain	Non-H	H(model)	H(added)	Clashes	Symm-Clashes
1	A	4230	4113	4113	11	0
1	B	4219	4092	4093	10	0
1	C	4264	4140	4138	6	0
1	D	4221	4098	4096	9	0
2	A	53	32	33	1	0
2	B	53	32	33	1	0

Continued on next page...

Continued from previous page...

Mol	Chain	Non-H	H(model)	H(added)	Clashes	Symm-Clashes
2	C	53	32	33	1	0
2	D	53	32	33	1	0
3	A	10	5	5	1	0
3	B	10	5	5	2	0
3	C	10	5	5	1	0
3	D	10	5	5	2	0
4	A	65	0	0	2	0
4	B	75	0	0	2	0
4	C	60	0	0	0	0
4	D	55	0	0	1	0
5	A	15	24	24	2	0
5	B	10	16	16	0	0
5	C	15	24	24	0	0
5	D	20	32	32	0	0
6	A	20	32	32	1	0
6	B	25	40	40	1	0
6	C	10	16	16	0	0
6	D	15	24	24	0	0
7	A	273	0	0	1	0
7	B	264	0	0	3	0
7	C	218	0	0	1	0
7	D	207	0	0	0	0
All	All	18533	16799	16800	40	0

The all-atom clashscore is defined as the number of clashes found per 1000 atoms (including hydrogen atoms). The all-atom clashscore for this structure is 1.

The worst 5 of 40 close contacts within the same asymmetric unit are listed below, sorted by their clash magnitude.

Atom-1	Atom-2	Interatomic distance (Å)	Clash overlap (Å)
3:D:702:GLU:N	3:D:702:GLU:OE2	2.21	0.74
3:C:702:GLU:N	3:C:702:GLU:OE2	2.20	0.74
3:A:702:GLU:N	3:A:702:GLU:OE2	2.21	0.73
3:B:702:GLU:N	3:B:702:GLU:OE2	2.22	0.73
4:B:709:SO4:O3	7:B:801:HOH:O	2.08	0.71

There are no symmetry-related clashes.

5.3 Torsion angles [i](#)

5.3.1 Protein backbone [i](#)

In the following table, the Percentiles column shows the percent Ramachandran outliers of the chain as a percentile score with respect to all X-ray entries followed by that with respect to entries of similar resolution.

The Analysed column shows the number of residues for which the backbone conformation was analysed, and the total number of residues.

Mol	Chain	Analysed	Favoured	Allowed	Outliers	Percentiles	
1	A	532/562 (95%)	515 (97%)	17 (3%)	0	100	100
1	B	530/562 (94%)	513 (97%)	17 (3%)	0	100	100
1	C	538/562 (96%)	521 (97%)	17 (3%)	0	100	100
1	D	534/562 (95%)	517 (97%)	17 (3%)	0	100	100
All	All	2134/2248 (95%)	2066 (97%)	68 (3%)	0	100	100

There are no Ramachandran outliers to report.

5.3.2 Protein sidechains [i](#)

In the following table, the Percentiles column shows the percent sidechain outliers of the chain as a percentile score with respect to all X-ray entries followed by that with respect to entries of similar resolution.

The Analysed column shows the number of residues for which the sidechain conformation was analysed, and the total number of residues.

Mol	Chain	Analysed	Rotameric	Outliers	Percentiles	
1	A	450/467 (96%)	447 (99%)	3 (1%)	84	88
1	B	448/467 (96%)	446 (100%)	2 (0%)	91	94
1	C	455/467 (97%)	453 (100%)	2 (0%)	91	94
1	D	447/467 (96%)	443 (99%)	4 (1%)	78	84
All	All	1800/1868 (96%)	1789 (99%)	11 (1%)	86	90

5 of 11 residues with a non-rotameric sidechain are listed below:

Mol	Chain	Res	Type
1	D	514[A]	HIS
1	D	514[B]	HIS
1	D	524	PHE

Continued on next page...

Continued from previous page...

Mol	Chain	Res	Type
1	D	522	PHE
1	B	524	PHE

Sometimes sidechains can be flipped to improve hydrogen bonding and reduce clashes. There are no such sidechains identified.

5.3.3 RNA [i](#)

There are no RNA molecules in this entry.

5.4 Non-standard residues in protein, DNA, RNA chains [i](#)

There are no non-standard protein/DNA/RNA residues in this entry.

5.5 Carbohydrates [i](#)

There are no monosaccharides in this entry.

5.6 Ligand geometry [i](#)

85 ligands are modelled in this entry.

In the following table, the Counts columns list the number of bonds (or angles) for which Mogul statistics could be retrieved, the number of bonds (or angles) that are observed in the model and the number of bonds (or angles) that are defined in the Chemical Component Dictionary. The Link column lists molecule types, if any, to which the group is linked. The Z score for a bond length (or angle) is the number of standard deviations the observed value is removed from the expected value. A bond length (or angle) with $|Z| > 2$ is considered an outlier worth inspection. RMSZ is the root-mean-square of all Z scores of the bond lengths (or angles).

Mol	Type	Chain	Res	Link	Bond lengths			Bond angles		
					Counts	RMSZ	# Z > 2	Counts	RMSZ	# Z > 2
3	GLU	C	702	-	8,9,9	1.04	1 (12%)	10,11,11	1.24	2 (20%)
4	SO4	C	709	-	4,4,4	0.61	0	6,6,6	0.05	0
4	SO4	B	707	-	4,4,4	0.60	0	6,6,6	0.04	0
4	SO4	B	705	-	4,4,4	0.59	0	6,6,6	0.05	0
4	SO4	D	706	-	4,4,4	0.60	0	6,6,6	0.04	0
4	SO4	C	703	-	4,4,4	0.59	0	6,6,6	0.05	0
4	SO4	B	708	-	4,4,4	0.59	0	6,6,6	0.08	0
5	PGR	A	720	-	3,4,4	0.28	0	1,4,4	0.54	0

Mol	Type	Chain	Res	Link	Bond lengths			Bond angles		
					Counts	RMSZ	# Z > 2	Counts	RMSZ	# Z > 2
4	SO4	B	706	-	4,4,4	0.59	0	6,6,6	0.08	0
4	SO4	A	708	-	4,4,4	0.61	0	6,6,6	0.07	0
5	PGR	A	722	-	3,4,4	0.32	0	1,4,4	0.61	0
5	PGR	D	719	-	3,4,4	0.30	0	1,4,4	0.62	0
5	PGR	A	716	-	3,4,4	0.28	0	1,4,4	0.59	0
4	SO4	D	710	-	4,4,4	0.59	0	6,6,6	0.07	0
4	SO4	A	705	-	4,4,4	0.60	0	6,6,6	0.06	0
4	SO4	C	708	-	4,4,4	0.60	0	6,6,6	0.05	0
5	PGR	B	719	-	3,4,4	0.27	0	1,4,4	0.65	0
6	PGO	A	719	-	3,4,4	0.26	0	1,4,4	0.55	0
4	SO4	D	709	-	4,4,4	0.60	0	6,6,6	0.06	0
6	PGO	B	724	-	3,4,4	0.27	0	1,4,4	0.70	0
4	SO4	C	707	-	4,4,4	0.59	0	6,6,6	0.06	0
6	PGO	C	718	-	3,4,4	0.28	0	1,4,4	0.50	0
4	SO4	D	708	-	4,4,4	0.60	0	6,6,6	0.05	0
4	SO4	A	703	-	4,4,4	0.60	0	6,6,6	0.05	0
4	SO4	A	706	-	4,4,4	0.59	0	6,6,6	0.05	0
4	SO4	A	704	-	4,4,4	0.59	0	6,6,6	0.10	0
5	PGR	C	717	-	3,4,4	0.27	0	1,4,4	0.47	0
4	SO4	C	705	-	4,4,4	0.60	0	6,6,6	0.06	0
6	PGO	B	721	-	3,4,4	0.26	0	1,4,4	0.52	0
4	SO4	A	714	-	4,4,4	0.59	0	6,6,6	0.08	0
2	FDA	A	701	-	52,58,58	0.62	0	60,89,89	0.73	2 (3%)
4	SO4	B	715	-	4,4,4	0.58	0	6,6,6	0.05	0
4	SO4	C	714	-	4,4,4	0.61	0	6,6,6	0.11	0
2	FDA	D	701	-	52,58,58	0.62	0	60,89,89	0.73	2 (3%)
4	SO4	D	704	-	4,4,4	0.60	0	6,6,6	0.08	0
4	SO4	D	705	-	4,4,4	0.59	0	6,6,6	0.06	0
4	SO4	A	710	-	4,4,4	0.61	0	6,6,6	0.06	0
6	PGO	D	716	-	3,4,4	0.27	0	1,4,4	0.50	0
4	SO4	B	704	-	4,4,4	0.61	0	6,6,6	0.07	0
2	FDA	B	701	-	52,58,58	0.61	0	60,89,89	0.75	2 (3%)
4	SO4	C	704	-	4,4,4	0.60	0	6,6,6	0.05	0
4	SO4	D	712	-	4,4,4	0.60	0	6,6,6	0.04	0
6	PGO	B	722	-	3,4,4	0.27	0	1,4,4	0.43	0
4	SO4	D	714	-	4,4,4	0.62	0	6,6,6	0.07	0
5	PGR	D	720	-	3,4,4	0.32	0	1,4,4	0.54	0
6	PGO	A	721	-	3,4,4	0.28	0	1,4,4	0.61	0
5	PGR	B	723	-	3,4,4	0.27	0	1,4,4	0.51	0
6	PGO	D	718	-	3,4,4	0.27	0	1,4,4	0.50	0
4	SO4	B	710	-	4,4,4	0.60	0	6,6,6	0.07	0
4	SO4	D	711	-	4,4,4	0.60	0	6,6,6	0.06	0

Mol	Type	Chain	Res	Link	Bond lengths			Bond angles		
					Counts	RMSZ	# Z > 2	Counts	RMSZ	# Z > 2
5	PGR	C	719	-	3,4,4	0.28	0	1,4,4	0.69	0
4	SO4	A	712	-	4,4,4	0.60	0	6,6,6	0.05	0
4	SO4	B	711	-	4,4,4	0.60	0	6,6,6	0.06	0
3	GLU	D	702	-	8,9,9	1.07	1 (12%)	10,11,11	1.31	2 (20%)
6	PGO	A	718	-	3,4,4	0.28	0	1,4,4	0.46	0
2	FDA	C	701	-	52,58,58	0.62	0	60,89,89	0.72	2 (3%)
4	SO4	C	711	-	4,4,4	0.60	0	6,6,6	0.05	0
6	PGO	B	703	-	3,4,4	0.28	0	1,4,4	0.66	0
4	SO4	A	707	-	4,4,4	0.60	0	6,6,6	0.06	0
5	PGR	D	715	-	3,4,4	0.26	0	1,4,4	0.60	0
4	SO4	B	713	-	4,4,4	0.59	0	6,6,6	0.05	0
4	SO4	C	706	-	4,4,4	0.59	0	6,6,6	0.06	0
4	SO4	D	713	-	4,4,4	0.58	0	6,6,6	0.09	0
4	SO4	B	712	-	4,4,4	0.60	0	6,6,6	0.05	0
5	PGR	C	715	-	3,4,4	0.27	0	1,4,4	0.60	0
4	SO4	C	712	-	4,4,4	0.60	0	6,6,6	0.06	0
4	SO4	C	710	-	4,4,4	0.60	0	6,6,6	0.05	0
4	SO4	A	711	-	4,4,4	0.60	0	6,6,6	0.05	0
4	SO4	A	713	-	4,4,4	0.60	0	6,6,6	0.04	0
6	PGO	B	720	-	3,4,4	0.25	0	1,4,4	0.50	0
6	PGO	A	717	-	3,4,4	0.27	0	1,4,4	0.55	0
4	SO4	B	709	-	4,4,4	0.60	0	6,6,6	0.05	0
4	SO4	B	716	-	4,4,4	0.58	0	6,6,6	0.06	0
3	GLU	B	702	-	8,9,9	1.04	1 (12%)	10,11,11	1.34	2 (20%)
4	SO4	A	709	-	4,4,4	0.61	0	6,6,6	0.08	0
4	SO4	B	714	-	4,4,4	0.60	0	6,6,6	0.06	0
4	SO4	A	715	-	4,4,4	0.61	0	6,6,6	0.05	0
4	SO4	B	717	-	4,4,4	0.60	0	6,6,6	0.06	0
6	PGO	D	717	-	3,4,4	0.28	0	1,4,4	0.59	0
4	SO4	C	713	-	4,4,4	0.59	0	6,6,6	0.07	0
6	PGO	C	716	-	3,4,4	0.26	0	1,4,4	0.61	0
3	GLU	A	702	-	8,9,9	1.07	1 (12%)	10,11,11	1.27	2 (20%)
4	SO4	D	707	-	4,4,4	0.60	0	6,6,6	0.05	0
5	PGR	D	703	-	3,4,4	0.27	0	1,4,4	0.65	0
4	SO4	B	718	-	4,4,4	0.59	0	6,6,6	0.08	0

In the following table, the Chirals column lists the number of chiral outliers, the number of chiral centers analysed, the number of these observed in the model and the number defined in the Chemical Component Dictionary. Similar counts are reported in the Torsion and Rings columns. '2' means no outliers of that kind were identified.

Mol	Type	Chain	Res	Link	Chirals	Torsions	Rings
5	PGR	D	720	-	-	2/2/2/2	-
3	GLU	C	702	-	-	4/9/9/9	-
6	PGO	A	721	-	-	0/2/2/2	-
5	PGR	C	715	-	-	0/2/2/2	-
5	PGR	B	723	-	-	1/2/2/2	-
6	PGO	D	718	-	-	2/2/2/2	-
5	PGR	C	717	-	-	0/2/2/2	-
5	PGR	C	719	-	-	0/2/2/2	-
6	PGO	B	720	-	-	2/2/2/2	-
6	PGO	A	717	-	-	1/2/2/2	-
3	GLU	D	702	-	-	3/9/9/9	-
6	PGO	A	718	-	-	1/2/2/2	-
5	PGR	A	720	-	-	0/2/2/2	-
2	FDA	C	701	-	-	2/30/50/50	0/6/6/6
3	GLU	B	702	-	-	4/9/9/9	-
6	PGO	B	721	-	-	2/2/2/2	-
2	FDA	A	701	-	-	2/30/50/50	0/6/6/6
5	PGR	A	722	-	-	0/2/2/2	-
5	PGR	D	719	-	-	0/2/2/2	-
5	PGR	A	716	-	-	0/2/2/2	-
2	FDA	D	701	-	-	2/30/50/50	0/6/6/6
6	PGO	D	717	-	-	0/2/2/2	-
5	PGR	B	719	-	-	0/2/2/2	-
6	PGO	D	716	-	-	0/2/2/2	-
2	FDA	B	701	-	-	2/30/50/50	0/6/6/6
6	PGO	B	703	-	-	1/2/2/2	-
6	PGO	C	718	-	-	2/2/2/2	-
6	PGO	A	719	-	-	1/2/2/2	-
6	PGO	B	722	-	-	0/2/2/2	-
6	PGO	C	716	-	-	1/2/2/2	-
5	PGR	D	715	-	-	0/2/2/2	-
6	PGO	B	724	-	-	2/2/2/2	-
3	GLU	A	702	-	-	3/9/9/9	-
5	PGR	D	703	-	-	0/2/2/2	-

All (4) bond length outliers are listed below:

Mol	Chain	Res	Type	Atoms	Z	Observed(Å)	Ideal(Å)
3	D	702	GLU	OXT-C	-2.14	1.23	1.30
3	A	702	GLU	OXT-C	-2.14	1.23	1.30

Continued on next page...

Continued from previous page...

Mol	Chain	Res	Type	Atoms	Z	Observed(Å)	Ideal(Å)
3	B	702	GLU	OXT-C	-2.08	1.23	1.30
3	C	702	GLU	OXT-C	-2.08	1.23	1.30

The worst 5 of 16 bond angle outliers are listed below:

Mol	Chain	Res	Type	Atoms	Z	Observed(°)	Ideal(°)
3	D	702	GLU	OXT-C-O	-2.74	117.87	124.09
3	B	702	GLU	OXT-C-O	-2.71	117.93	124.09
3	A	702	GLU	OXT-C-O	-2.62	118.13	124.09
3	C	702	GLU	OXT-C-O	-2.49	118.42	124.09
3	B	702	GLU	OXT-C-CA	2.42	121.64	113.38

There are no chirality outliers.

5 of 40 torsion outliers are listed below:

Mol	Chain	Res	Type	Atoms
5	D	720	PGR	O1-C1-C2-C3
5	D	720	PGR	O1-C1-C2-O2
6	B	720	PGO	O1-C1-C2-O2
6	B	721	PGO	O1-C1-C2-C3
6	B	721	PGO	O1-C1-C2-O2

There are no ring outliers.

16 monomers are involved in 19 short contacts:

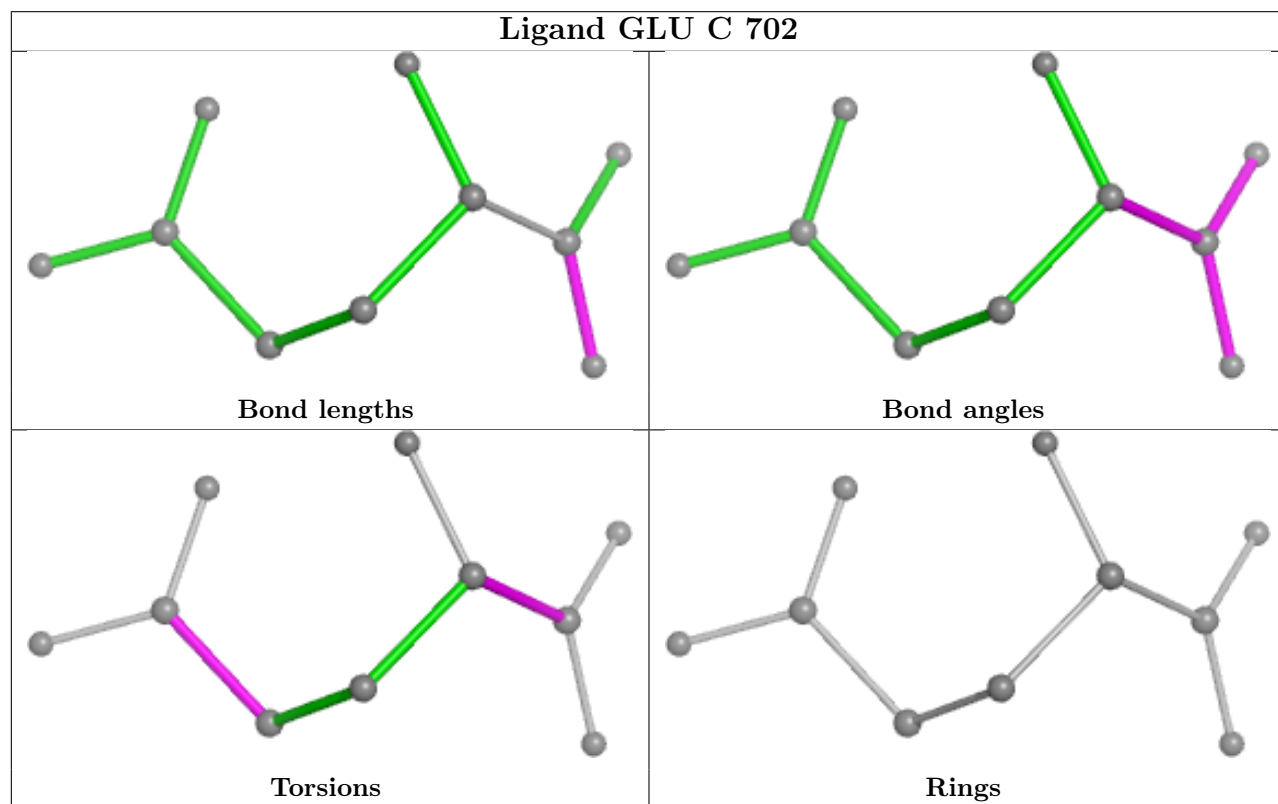
Mol	Chain	Res	Type	Clashes	Symm-Clashes
3	C	702	GLU	1	0
4	D	706	SO4	1	0
4	B	706	SO4	1	0
5	A	722	PGR	2	0
4	A	706	SO4	1	0
4	A	704	SO4	1	0
2	A	701	FDA	1	0
2	D	701	FDA	1	0
2	B	701	FDA	1	0
6	B	722	PGO	1	0
3	D	702	GLU	2	0
6	A	718	PGO	1	0
2	C	701	FDA	1	0
4	B	709	SO4	1	0
3	B	702	GLU	2	0

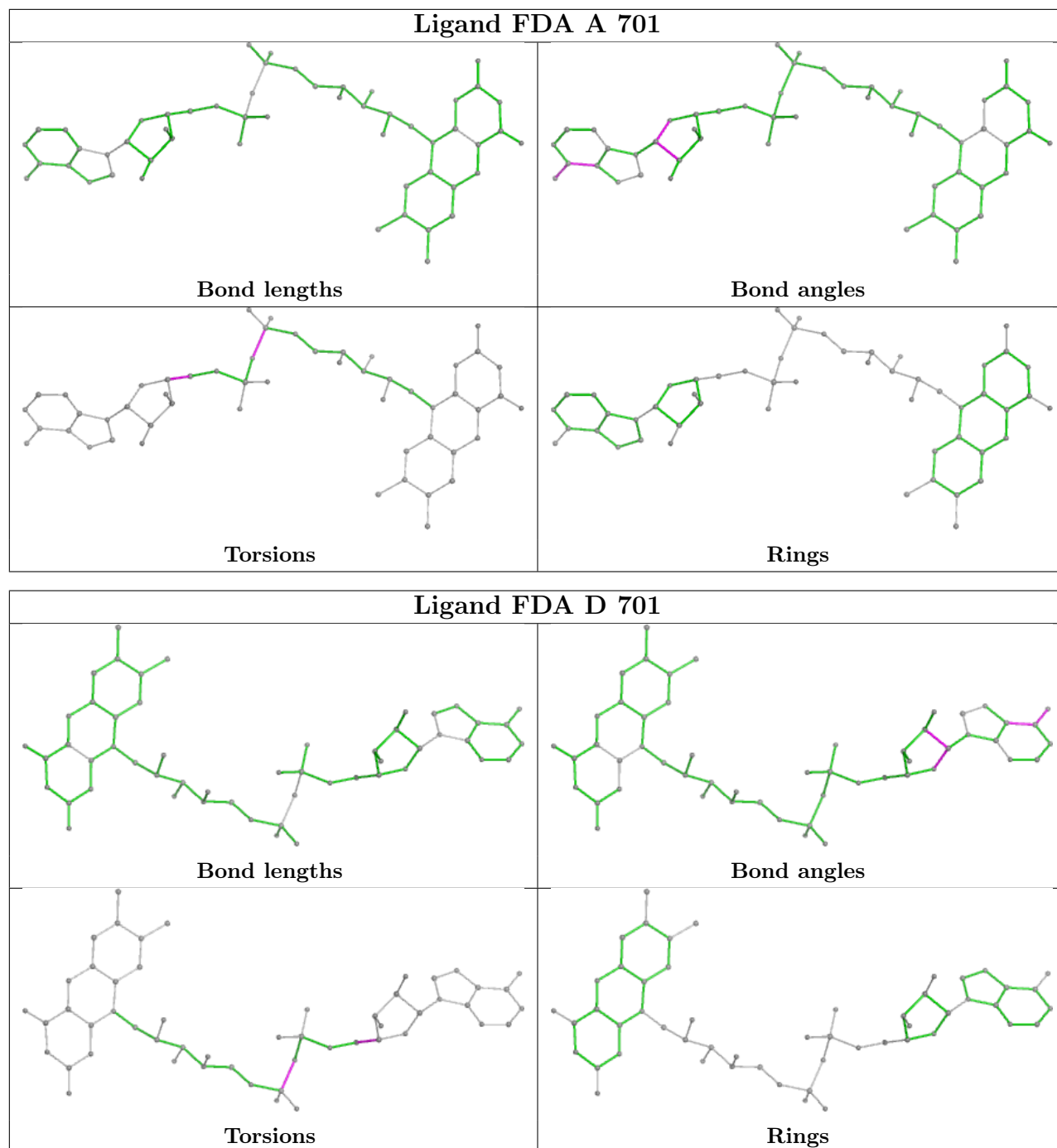
Continued on next page...

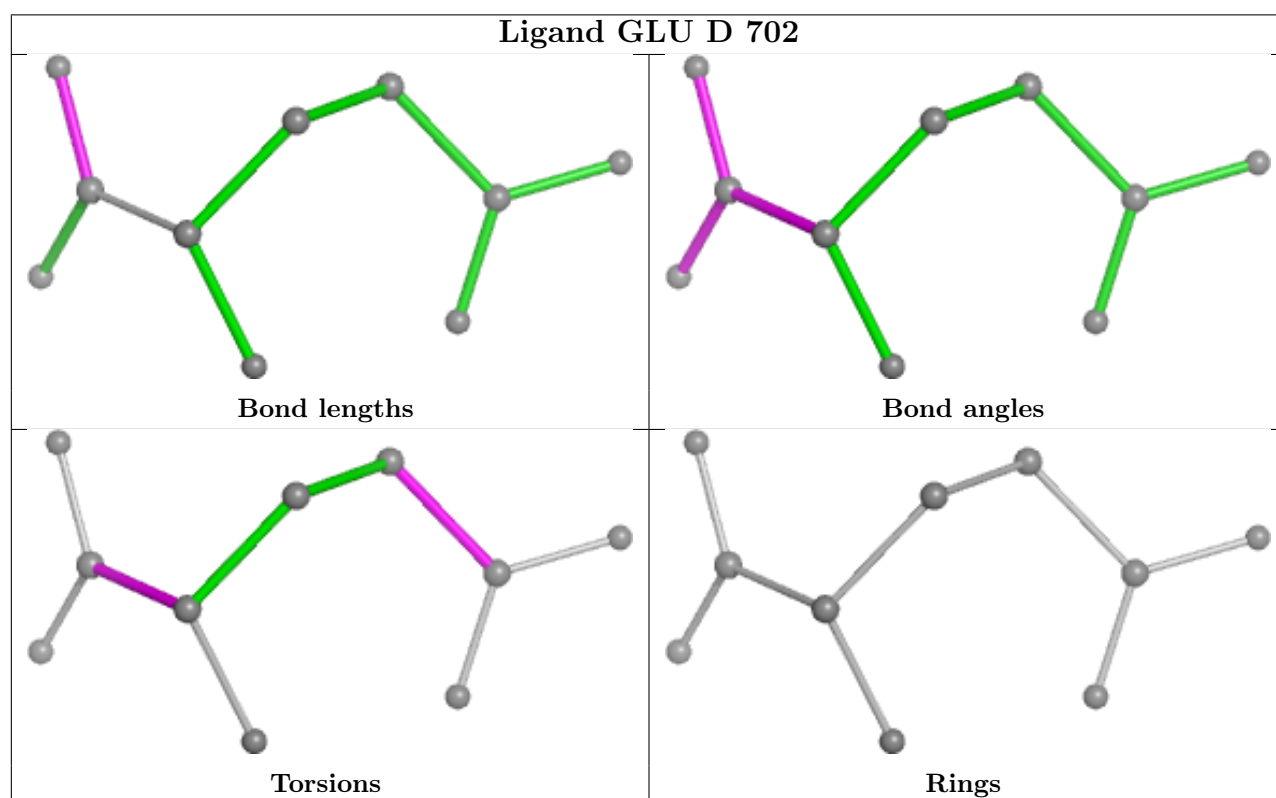
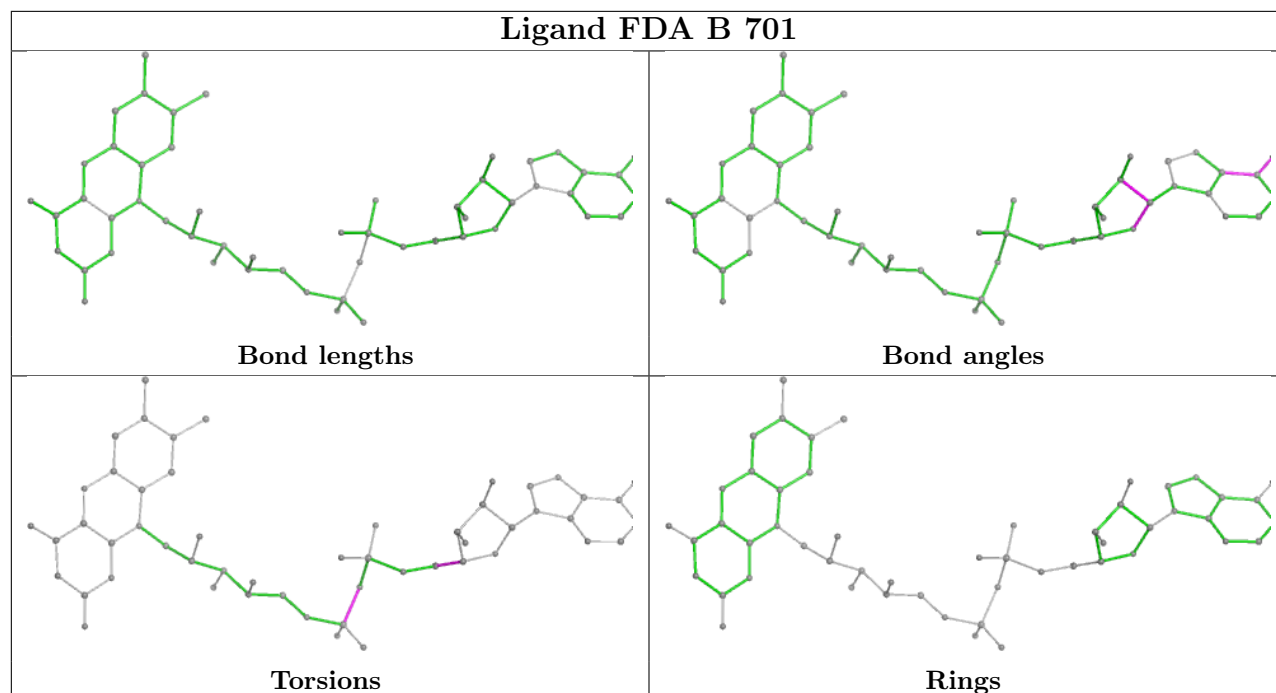
Continued from previous page...

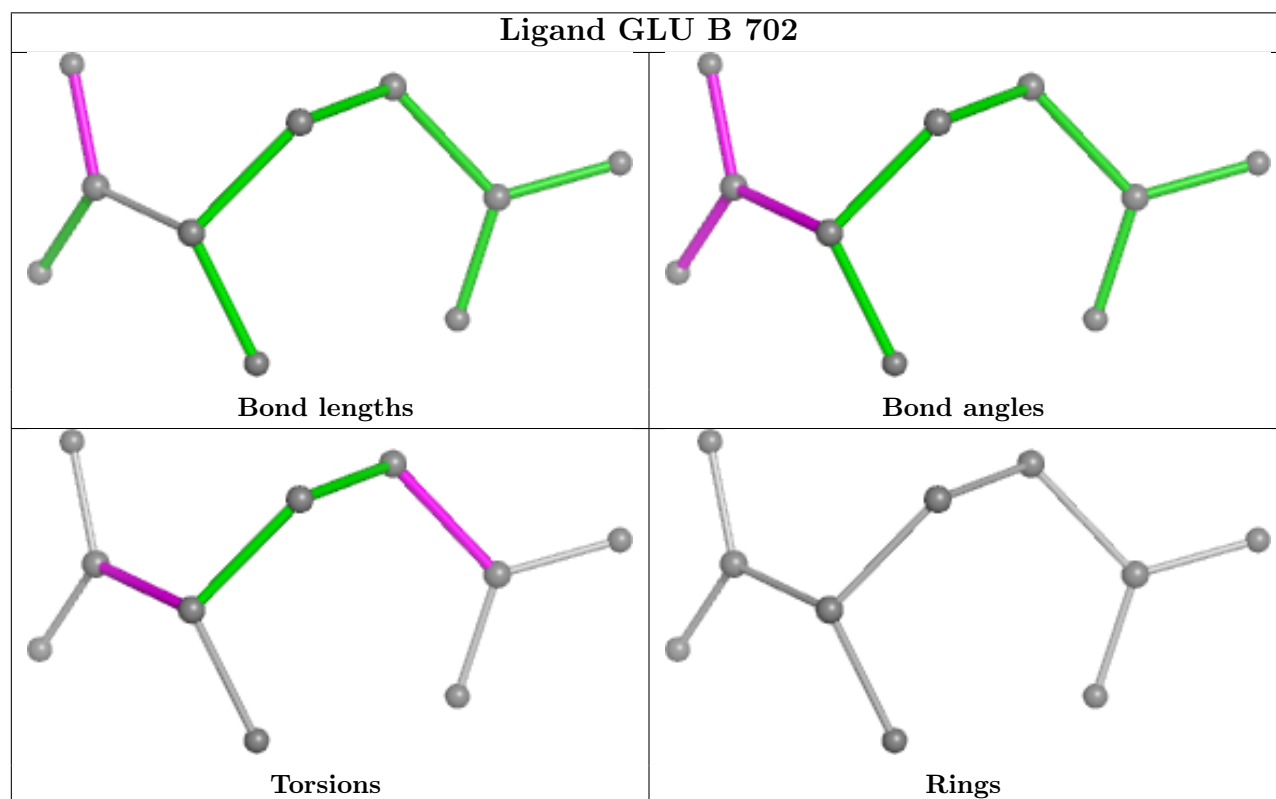
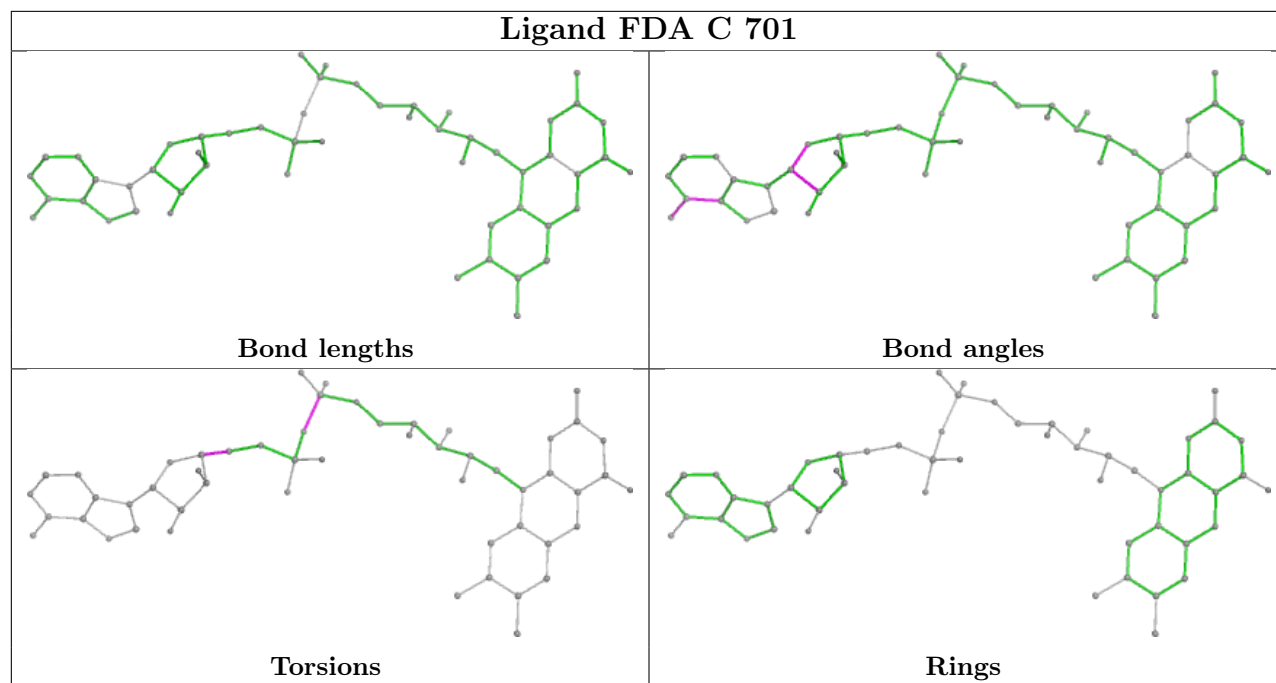
Mol	Chain	Res	Type	Clashes	Symm-Clashes
3	A	702	GLU	1	0

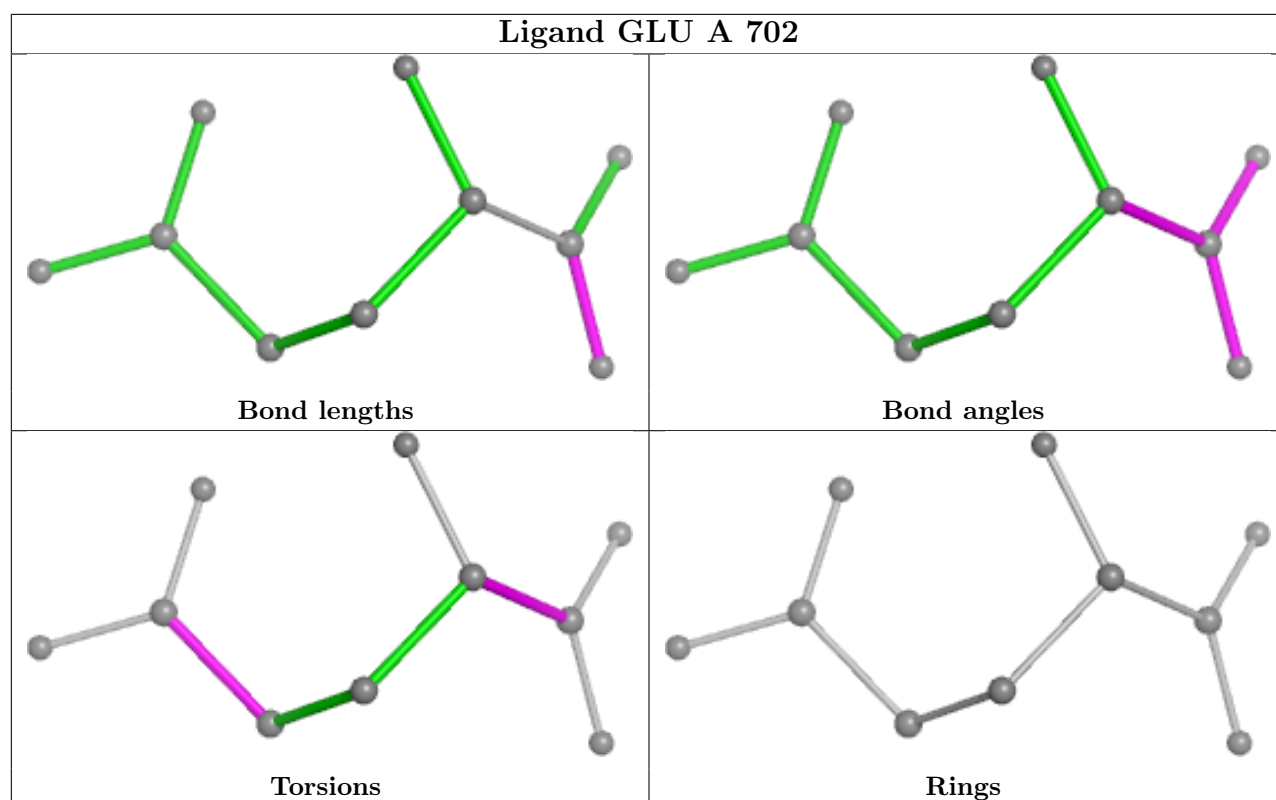
The following is a two-dimensional graphical depiction of Mogul quality analysis of bond lengths, bond angles, torsion angles, and ring geometry for all instances of the Ligand of Interest. In addition, ligands with molecular weight > 250 and outliers as shown on the validation Tables will also be included. For torsion angles, if less than 5% of the Mogul distribution of torsion angles is within 10 degrees of the torsion angle in question, then that torsion angle is considered an outlier. Any bond that is central to one or more torsion angles identified as an outlier by Mogul will be highlighted in the graph. For rings, the root-mean-square deviation (RMSD) between the ring in question and similar rings identified by Mogul is calculated over all ring torsion angles. If the average RMSD is greater than 60 degrees and the minimal RMSD between the ring in question and any Mogul-identified rings is also greater than 60 degrees, then that ring is considered an outlier. The outliers are highlighted in purple. The color gray indicates Mogul did not find sufficient equivalents in the CSD to analyse the geometry.











5.7 Other polymers [i](#)

There are no such residues in this entry.

5.8 Polymer linkage issues [i](#)

There are no chain breaks in this entry.

6 Fit of model and data [i](#)

6.1 Protein, DNA and RNA chains [i](#)

In the following table, the column labelled ‘#RSRZ> 2’ contains the number (and percentage) of RSRZ outliers, followed by percent RSRZ outliers for the chain as percentile scores relative to all X-ray entries and entries of similar resolution. The OWAB column contains the minimum, median, 95th percentile and maximum values of the occupancy-weighted average B-factor per residue. The column labelled ‘Q< 0.9’ lists the number of (and percentage) of residues with an average occupancy less than 0.9.

Mol	Chain	Analysed	<RSRZ>	#RSRZ>2	OWAB(Å ²)	Q<0.9
1	A	532/562 (94%)	0.96	88 (16%) 1 2	30, 40, 57, 106	0
1	B	531/562 (94%)	0.98	91 (17%) 1 1	31, 38, 53, 85	0
1	C	534/562 (95%)	1.07	90 (16%) 1 2	32, 44, 66, 105	0
1	D	533/562 (94%)	1.05	94 (17%) 1 1	33, 45, 71, 112	0
All	All	2130/2248 (94%)	1.02	363 (17%) 1 1	30, 41, 63, 112	0

The worst 5 of 363 RSRZ outliers are listed below:

Mol	Chain	Res	Type	RSRZ
1	C	321	HIS	10.0
1	D	323	LYS	8.3
1	C	299	GLU	7.9
1	D	321	HIS	6.9
1	C	62	PRO	6.9

6.2 Non-standard residues in protein, DNA, RNA chains [i](#)

There are no non-standard protein/DNA/RNA residues in this entry.

6.3 Carbohydrates [i](#)

There are no monosaccharides in this entry.

6.4 Ligands [i](#)

In the following table, the Atoms column lists the number of modelled atoms in the group and the number defined in the chemical component dictionary. The B-factors column lists the minimum, median, 95th percentile and maximum values of B factors of atoms in the group. The column labelled ‘Q< 0.9’ lists the number of atoms with occupancy less than 0.9.

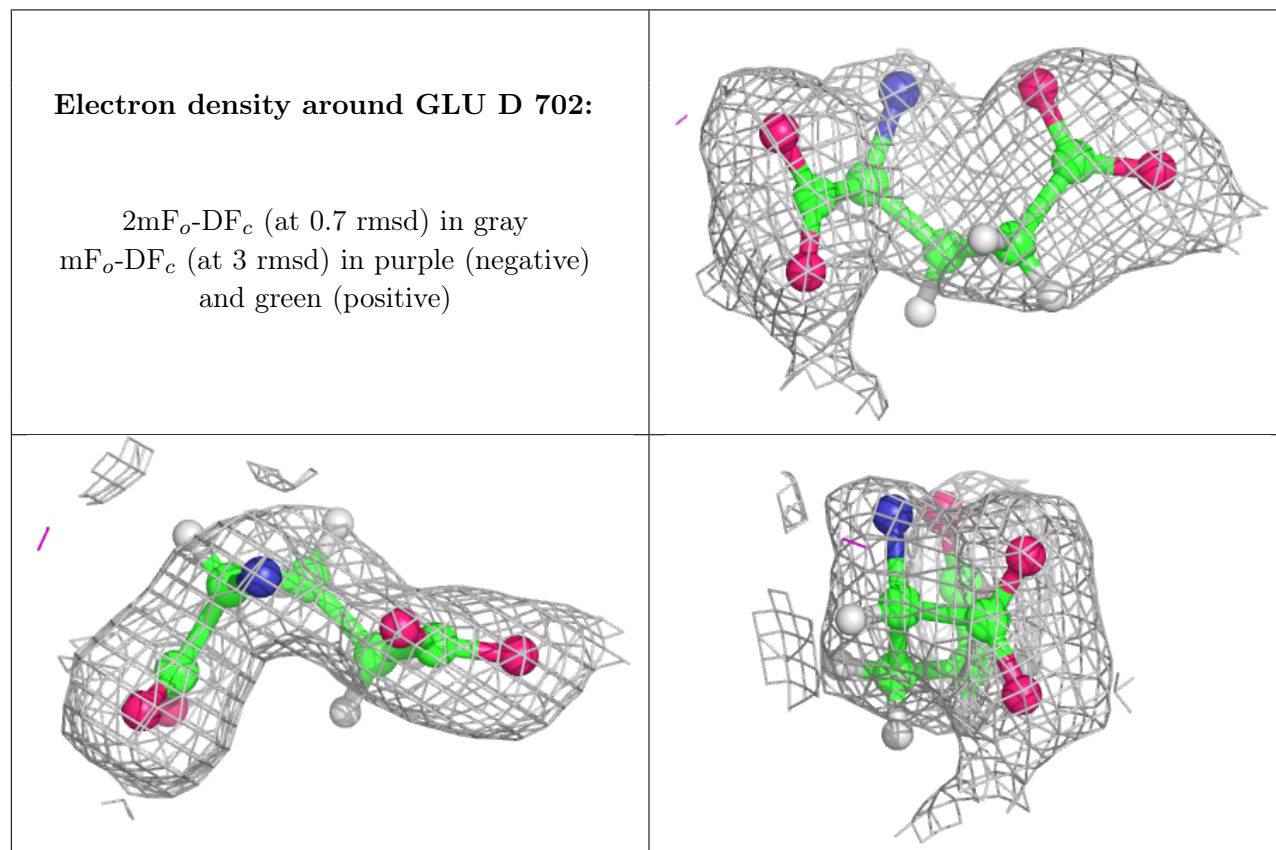
Mol	Type	Chain	Res	Atoms	RSCC	RSR	B-factors(\AA^2)	Q<0.9
4	SO4	C	714	5/5	0.36	0.58	40,44,52,52	5
4	SO4	D	712	5/5	0.61	0.48	54,57,60,62	5
4	SO4	A	709	5/5	0.62	0.50	41,41,48,49	5
4	SO4	A	708	5/5	0.63	0.35	53,54,59,65	5
4	SO4	D	714	5/5	0.64	0.34	44,44,55,56	5
4	SO4	A	713	5/5	0.67	0.30	53,55,56,61	5
4	SO4	B	715	5/5	0.68	0.40	40,44,46,48	5
4	SO4	D	708	5/5	0.68	0.28	51,53,59,62	5
4	SO4	A	712	5/5	0.70	0.39	67,69,73,77	5
4	SO4	C	709	5/5	0.71	0.51	60,60,69,69	5
4	SO4	D	711	5/5	0.71	0.30	61,62,67,67	5
4	SO4	C	710	5/5	0.73	0.40	55,55,58,62	5
4	SO4	C	708	5/5	0.74	0.43	58,59,62,67	5
4	SO4	D	705	5/5	0.74	0.33	47,52,53,54	5
4	SO4	C	711	5/5	0.74	0.21	67,67,76,78	5
6	PGO	D	718	5/5	0.74	0.31	46,55,65,65	13
6	PGO	B	703	5/5	0.76	0.28	44,53,58,58	0
4	SO4	A	715	5/5	0.76	0.28	48,48,57,58	5
6	PGO	B	721	5/5	0.77	0.17	47,57,67,67	0
4	SO4	A	705	5/5	0.78	0.30	42,47,48,52	5
5	PGR	D	703	5/5	0.79	0.19	47,57,66,75	0
4	SO4	B	711	5/5	0.79	0.20	53,56,59,61	5
4	SO4	C	703	5/5	0.80	0.27	53,54,60,61	5
4	SO4	D	707	5/5	0.80	0.30	47,49,55,56	5
4	SO4	D	710	5/5	0.81	0.23	61,65,70,70	5
4	SO4	B	713	5/5	0.81	0.31	56,58,60,60	5
4	SO4	C	712	5/5	0.81	0.38	44,45,50,51	5
4	SO4	B	717	5/5	0.81	0.27	59,61,63,65	5
6	PGO	A	718	5/5	0.82	0.30	47,57,61,66	0
4	SO4	D	709	5/5	0.82	0.34	61,63,68,70	5
4	SO4	B	716	5/5	0.82	0.43	45,50,53,54	5
4	SO4	B	709	5/5	0.82	0.23	45,51,54,55	5
6	PGO	A	721	5/5	0.83	0.19	42,50,52,57	13
4	SO4	B	706	5/5	0.83	0.36	40,46,49,50	5
4	SO4	A	703	5/5	0.84	0.24	42,46,52,52	5
6	PGO	B	722	5/5	0.84	0.48	33,39,46,47	13
4	SO4	C	705	5/5	0.84	0.25	50,51,57,61	5
4	SO4	A	706	5/5	0.85	0.23	47,49,55,57	5
5	PGR	B	719	5/5	0.85	0.42	31,37,43,43	13
5	PGR	B	723	5/5	0.85	0.33	35,43,48,51	13
4	SO4	A	710	5/5	0.85	0.23	56,57,64,65	5
6	PGO	C	718	5/5	0.85	0.24	42,50,57,57	13
4	SO4	B	707	5/5	0.85	0.26	48,52,55,58	5

Continued on next page...

Continued from previous page...

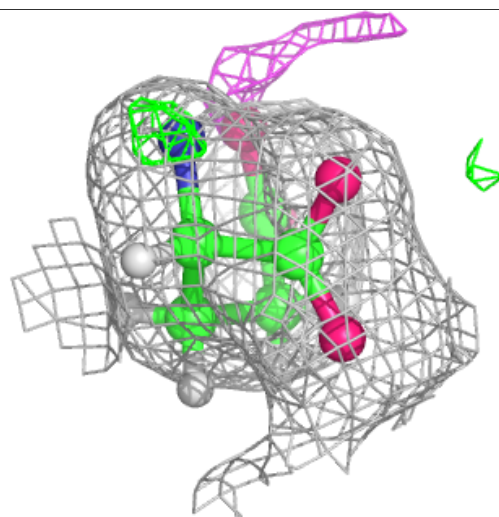
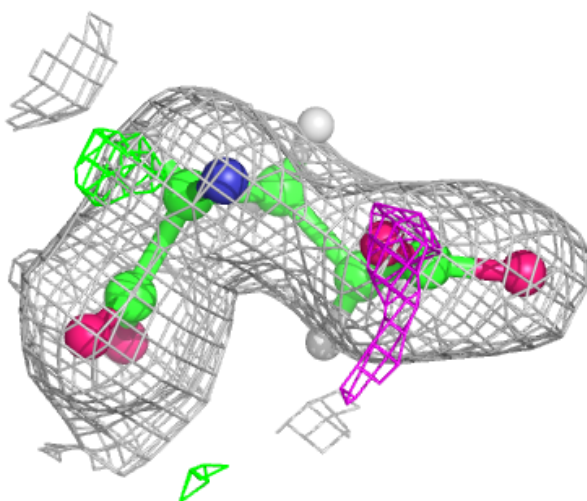
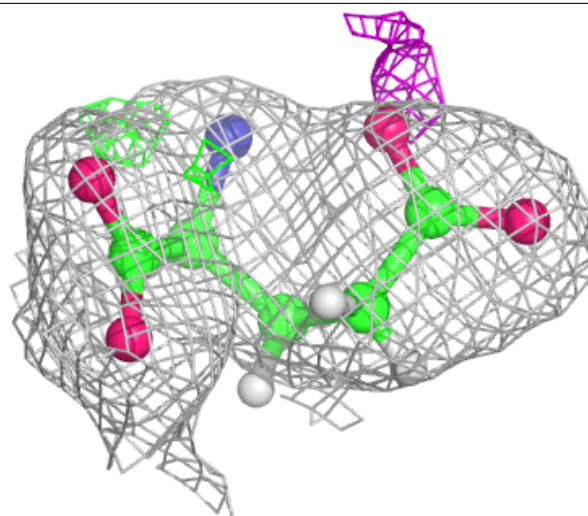
Mol	Type	Chain	Res	Atoms	RSCC	RSR	B-factors(\AA^2)	Q<0.9
4	SO4	B	705	5/5	0.86	0.17	45,47,50,51	5
5	PGR	A	716	5/5	0.86	0.51	35,42,45,47	13
4	SO4	C	706	5/5	0.87	0.16	53,56,57,59	5
4	SO4	A	711	5/5	0.87	0.36	62,63,65,69	5
4	SO4	D	706	5/5	0.87	0.23	53,55,63,64	5
4	SO4	B	712	5/5	0.88	0.28	51,54,59,61	5
3	GLU	D	702	10/10	0.88	0.35	38,43,49,49	0
3	GLU	C	702	10/10	0.88	0.26	37,42,51,51	0
4	SO4	C	704	5/5	0.88	0.18	69,70,74,77	5
5	PGR	D	720	5/5	0.89	0.52	36,43,46,46	13
3	GLU	A	702	10/10	0.89	0.22	35,39,47,47	0
5	PGR	C	715	5/5	0.89	0.42	36,43,46,48	13
4	SO4	A	707	5/5	0.89	0.23	39,41,42,44	5
6	PGO	C	716	5/5	0.90	0.21	34,45,47,54	0
5	PGR	C	719	5/5	0.90	0.50	34,42,44,50	13
4	SO4	D	704	5/5	0.90	0.16	53,55,57,58	5
3	GLU	B	702	10/10	0.91	0.43	31,36,43,43	15
6	PGO	A	717	5/5	0.91	0.19	35,43,47,47	13
6	PGO	B	724	5/5	0.91	0.24	41,50,52,60	13
2	FDA	C	701	53/53	0.91	0.20	31,36,44,45	0
5	PGR	A	720	5/5	0.91	0.20	35,43,46,53	0
4	SO4	C	707	5/5	0.91	0.22	44,46,49,49	5
5	PGR	A	722	5/5	0.92	0.60	32,39,48,48	13
6	PGO	B	720	5/5	0.92	0.22	36,43,50,50	13
4	SO4	B	708	5/5	0.92	0.18	38,39,46,47	5
5	PGR	C	717	5/5	0.92	0.24	36,44,48,53	0
4	SO4	B	704	5/5	0.93	0.14	43,43,47,50	5
4	SO4	B	710	5/5	0.93	0.27	54,61,65,65	5
2	FDA	A	701	53/53	0.93	0.19	31,35,43,45	0
4	SO4	A	704	5/5	0.93	0.29	53,55,58,58	5
5	PGR	D	715	5/5	0.93	0.38	37,44,46,47	13
5	PGR	D	719	5/5	0.93	0.22	34,45,47,54	13
2	FDA	D	701	53/53	0.93	0.19	31,37,44,46	0
4	SO4	B	714	5/5	0.93	0.22	47,49,51,51	5
2	FDA	B	701	53/53	0.93	0.20	25,33,40,42	0
4	SO4	A	714	5/5	0.94	0.17	42,48,51,56	5
6	PGO	D	716	5/5	0.94	0.49	35,42,46,49	13
6	PGO	D	717	5/5	0.94	0.10	49,58,63,64	0
4	SO4	D	713	5/5	0.94	0.24	49,50,55,59	5
6	PGO	A	719	5/5	0.95	0.37	34,42,46,50	13
4	SO4	C	713	5/5	0.96	0.14	45,48,49,50	5
4	SO4	B	718	5/5	0.97	0.15	43,47,50,53	5

The following is a graphical depiction of the model fit to experimental electron density of all instances of the Ligand of Interest. In addition, ligands with molecular weight > 250 and outliers as shown on the geometry validation Tables will also be included. Each fit is shown from different orientation to approximate a three-dimensional view.



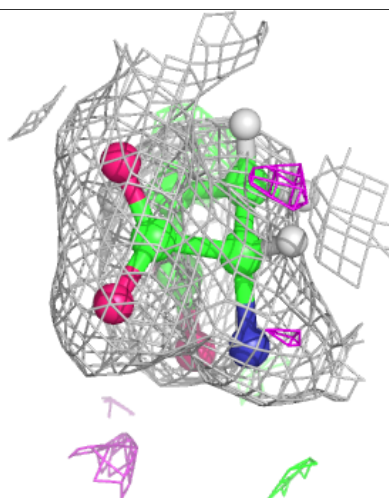
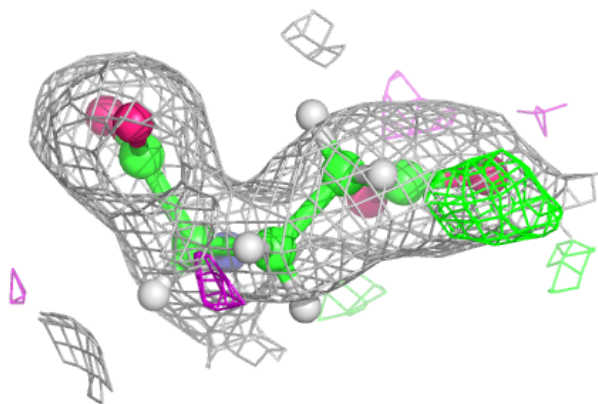
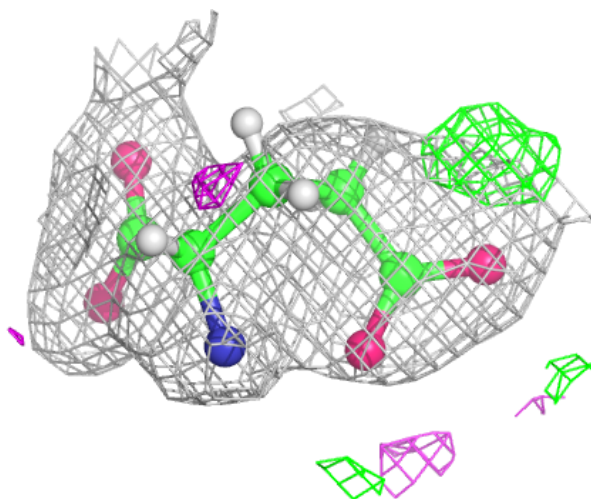
Electron density around GLU C 702:

$2mF_o-DF_c$ (at 0.7 rmsd) in gray
 mF_o-DF_c (at 3 rmsd) in purple (negative)
and green (positive)



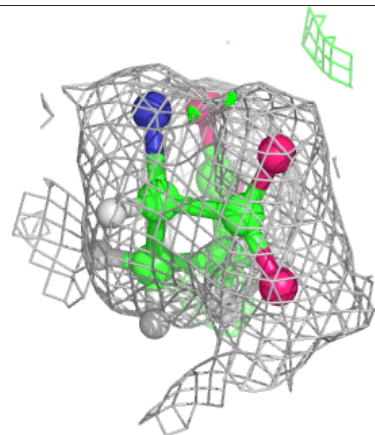
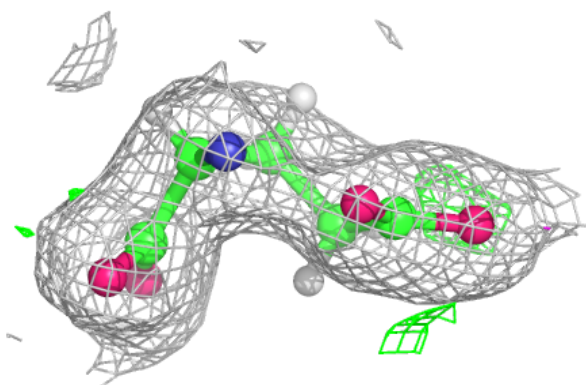
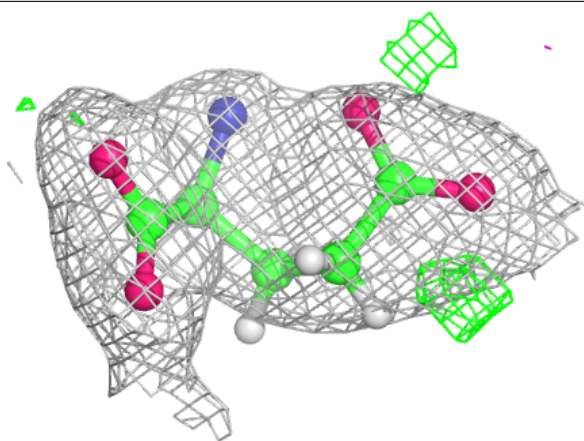
Electron density around GLU A 702:

$2mF_o-DF_c$ (at 0.7 rmsd) in gray
 mF_o-DF_c (at 3 rmsd) in purple (negative)
and green (positive)

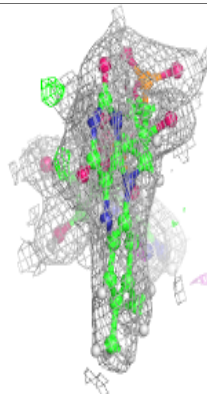
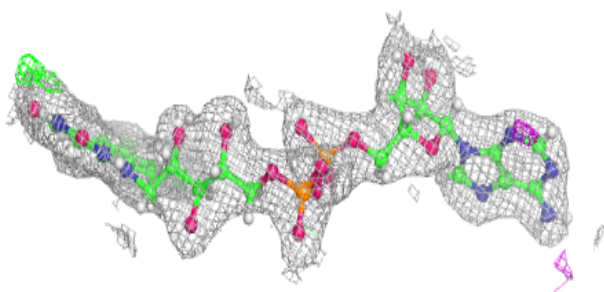
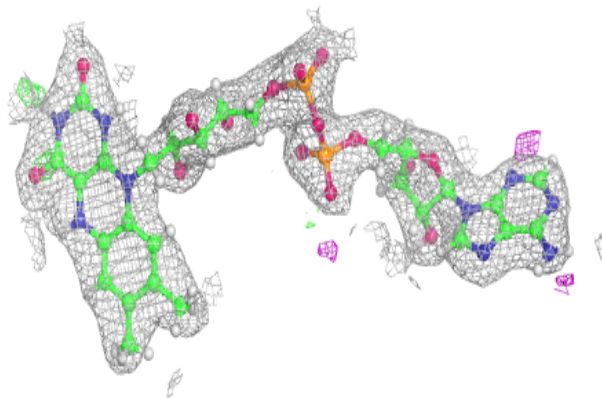


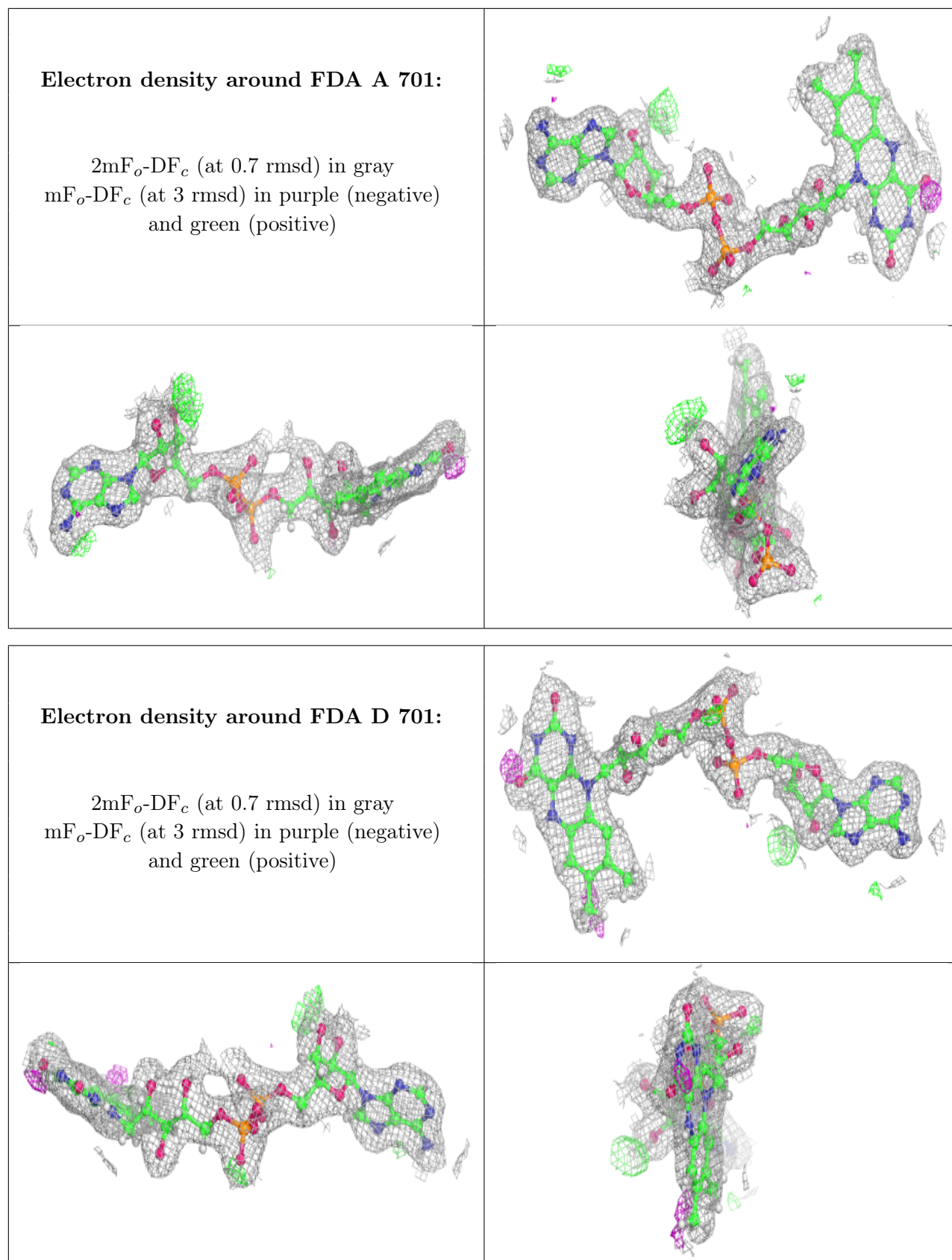
Electron density around GLU B 702:

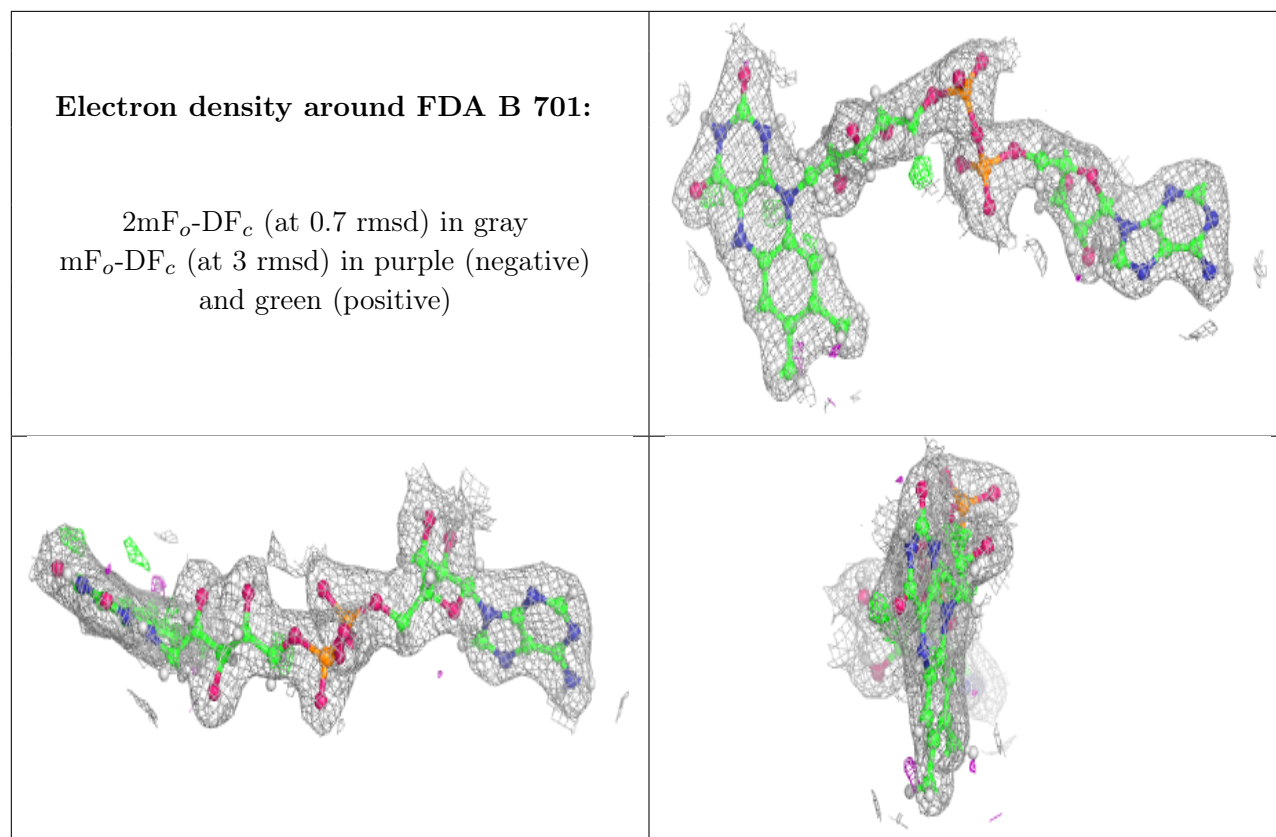
$2mF_o-DF_c$ (at 0.7 rmsd) in gray
 mF_o-DF_c (at 3 rmsd) in purple (negative)
and green (positive)

**Electron density around FDA C 701:**

$2mF_o-DF_c$ (at 0.7 rmsd) in gray
 mF_o-DF_c (at 3 rmsd) in purple (negative)
and green (positive)







6.5 Other polymers [i](#)

There are no such residues in this entry.