



Full wwPDB X-ray Structure Validation Report ⓘ

Mar 5, 2026 – 04:02 PM UTC

PDB ID : 4EOI / pdb_00004eoi
Title : Thr 160 phosphorylated CDK2 K89D, Q131E - human cyclin A3 complex with the inhibitor RO3306
Authors : Echalier, A.; Cot, E.; Camasses, A.; Hodimont, E.; Hoh, F.; Sheinerman, F.; Krasinska, L.; Fisher, D.
Deposited on : 2012-04-14
Resolution : 2.00 Å(reported)

This is a Full wwPDB X-ray Structure Validation Report for a publicly released PDB entry.

We welcome your comments at validation@mail.wwpdb.org

A user guide is available at

<https://www.wwpdb.org/validation/2017/XrayValidationReportHelp>

with specific help available everywhere you see the ⓘ symbol.

The types of validation reports are described at

<http://www.wwpdb.org/validation/2017/FAQs#types>.

The following versions of software and data (see [references ⓘ](#)) were used in the production of this report:

MolProbity	:	4-5-2 with Phenix2.0
Mogul	:	2022.3.0, CSD as543be (2022)
Xtriage (Phenix)	:	2.0
EDS	:	3.0
Buster-report	:	wwPDB partial adaption of 1.1.7 (2018)
Percentile statistics	:	20250101.v01 (using entries in the PDB archive January 1st 2025)
CCP4	:	9.0.010 (Gargrove)
Density-Fitness	:	1.0.12
Ideal geometry (proteins)	:	Engh & Huber (2001)
Ideal geometry (DNA, RNA)	:	Parkinson et al. (1996)
Validation Pipeline (wwPDB-VP)	:	2.49

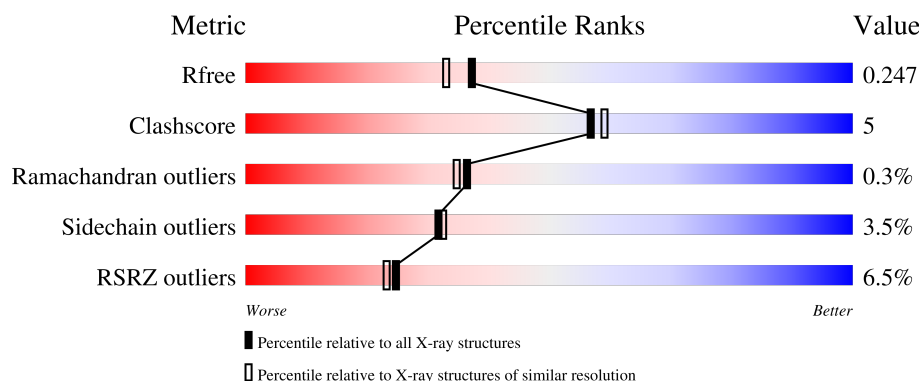
1 Overall quality at a glance

The following experimental techniques were used to determine the structure:

X-RAY DIFFRACTION

The reported resolution of this entry is 2.00 Å.

Percentile scores (ranging between 0-100) for global validation metrics of the entry are shown in the following graphic. The table shows the number of entries on which the scores are based.



Metric	Whole archive (#Entries)	Similar resolution (#Entries, resolution range(Å))
R_{free}	180053	10052 (2.00-2.00)
Clashscore	190562	11152 (2.00-2.00)
Ramachandran outliers	187476	11031 (2.00-2.00)
Sidechain outliers	187428	11029 (2.00-2.00)
RSRZ outliers	180081	10067 (2.00-2.00)

The table below summarises the geometric issues observed across the polymeric chains and their fit to the electron density. The red, orange, yellow and green segments of the lower bar indicate the fraction of residues that contain outliers for ≥ 3 , 2, 1 and 0 types of geometric quality criteria respectively. A grey segment represents the fraction of residues that are not modelled. The numeric value for each fraction is indicated below the corresponding segment, with a dot representing fractions $\leq 5\%$. The upper red bar (where present) indicates the fraction of residues that have poor fit to the electron density. The numeric value is given above the bar.

Mol	Chain	Length	Quality of chain
1	A	299	<div> <div>7%</div> <div>84%</div> <div>13%</div> <div>..</div> </div>
1	C	299	<div> <div>5%</div> <div>87%</div> <div>11%</div> <div>..</div> </div>
2	B	258	<div> <div>5%</div> <div>90%</div> <div>9%</div> <div>.</div> </div>
2	D	258	<div> <div>9%</div> <div>90%</div> <div>9%</div> <div>.</div> </div>

The following table lists non-polymeric compounds, carbohydrate monomers and non-standard residues in protein, DNA, RNA chains that are outliers for geometric or electron-density-fit criteria:

Mol	Type	Chain	Res	Chirality	Geometry	Clashes	Electron density
3	1RO	A	301	-	-	X	-
3	1RO	C	301	-	-	X	-

2 Entry composition

There are 6 unique types of molecules in this entry. The entry contains 9466 atoms, of which 0 are hydrogens and 0 are deuteriums.

In the tables below, the ZeroOcc column contains the number of atoms modelled with zero occupancy, the AltConf column contains the number of residues with at least one atom in alternate conformation and the Trace column contains the number of residues modelled with at most 2 atoms.

- Molecule 1 is a protein called Cyclin-dependent kinase 2.

Mol	Chain	Residues	Atoms						ZeroOcc	AltConf	Trace
1	A	295	Total	C	N	O	P	S	0	2	0
			2390	1552	405	424	1	8			
1	C	297	Total	C	N	O	P	S	0	3	0
			2410	1564	405	432	1	8			

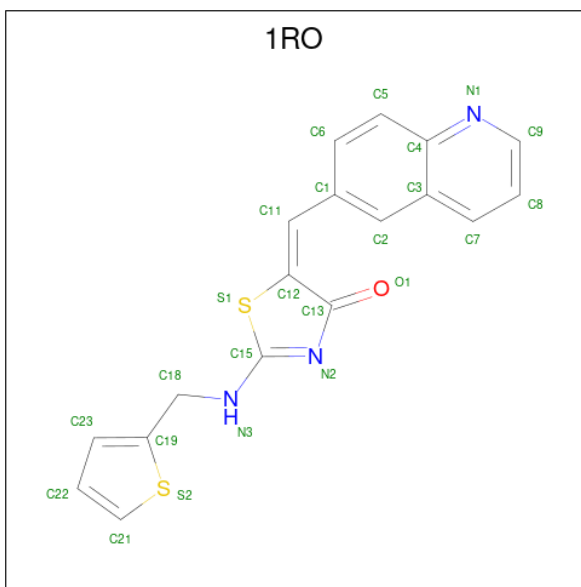
There are 6 discrepancies between the modelled and reference sequences:

Chain	Residue	Modelled	Actual	Comment	Reference
A	0	SER	-	expression tag	UNP P24941
A	89	ASP	LYS	engineered mutation	UNP P24941
A	131	GLU	GLN	engineered mutation	UNP P24941
C	0	SER	-	expression tag	UNP P24941
C	89	ASP	LYS	engineered mutation	UNP P24941
C	131	GLU	GLN	engineered mutation	UNP P24941

- Molecule 2 is a protein called Cyclin-A2.

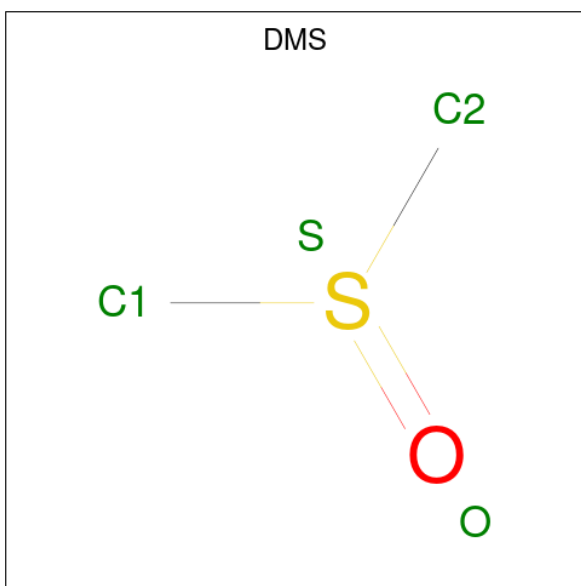
Mol	Chain	Residues	Atoms						ZeroOcc	AltConf	Trace
2	B	258	Total	C	N	O	S		0	3	0
			2108	1364	344	389	11				
2	D	255	Total	C	N	O	S		0	1	0
			2071	1342	339	379	11				

- Molecule 3 is (5E)-5-(quinolin-6-ylmethylidene)-2-[(thiophen-2-ylmethyl)amino]-1,3-thiazol-4(5H)-one (CCD ID: 1RO) (formula: C₁₈H₁₃N₃OS₂).



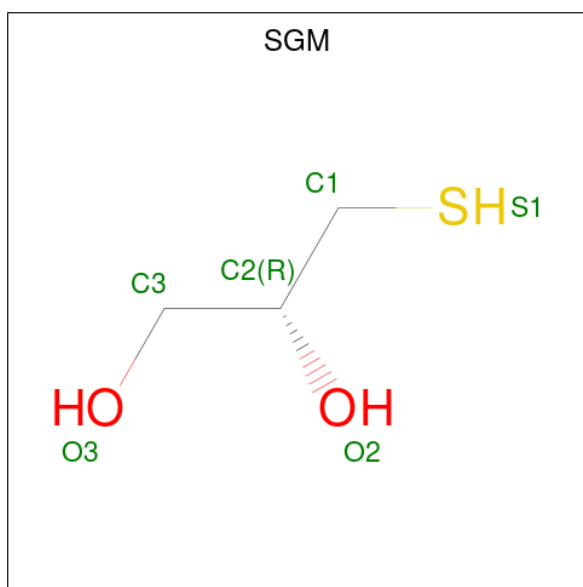
Mol	Chain	Residues	Atoms					ZeroOcc	AltConf
3	A	1	Total	C	N	O	S	0	0
			24	18	3	1	2		
3	C	1	Total	C	N	O	S	0	0
			24	18	3	1	2		

- Molecule 4 is DIMETHYL SULFOXIDE (CCD ID: DMS) (formula: C_2H_6OS).



Mol	Chain	Residues	Atoms				ZeroOcc	AltConf
4	A	1	Total	C	O	S	0	0
			4	2	1	1		

- Molecule 5 is MONOTHIOGLYCEROL (CCD ID: SGM) (formula: $C_3H_8O_2S$).



Mol	Chain	Residues	Atoms				ZeroOcc	AltConf
5	B	1	Total	C	O	S	0	0
			6	3	2	1		
5	D	1	Total	C	O	S	0	0
			6	3	2	1		

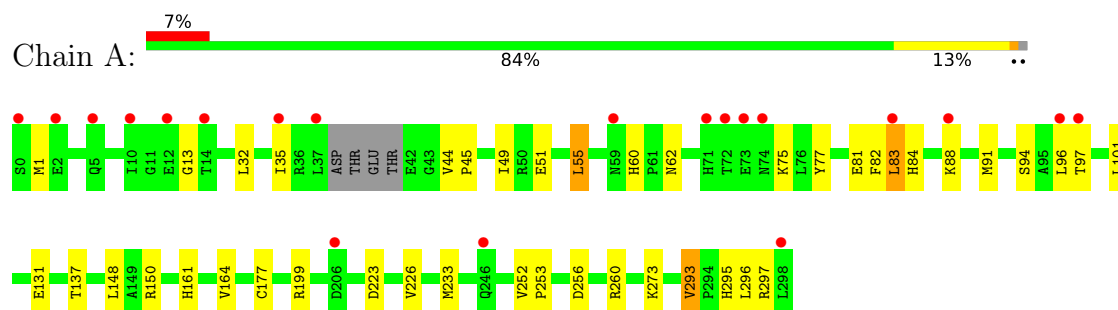
- Molecule 6 is water.

Mol	Chain	Residues	Atoms		ZeroOcc	AltConf
6	A	145	Total	O	0	0
			145	145		
6	B	111	Total	O	0	0
			111	111		
6	C	98	Total	O	0	0
			98	98		
6	D	69	Total	O	0	0
			69	69		

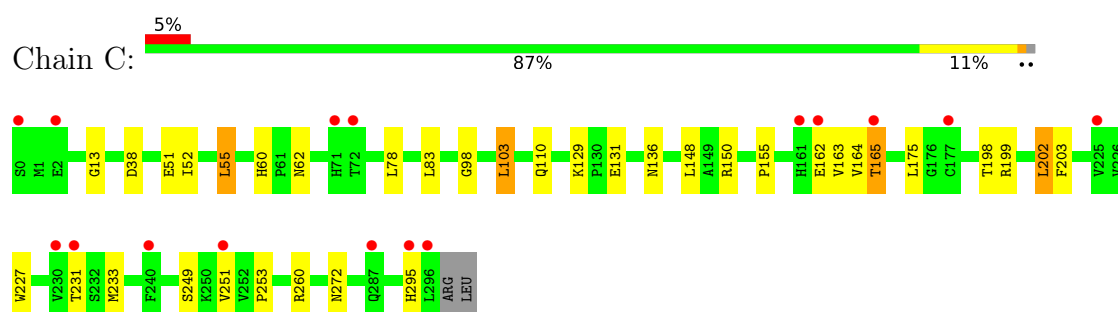
3 Residue-property plots

These plots are drawn for all protein, RNA, DNA and oligosaccharide chains in the entry. The first graphic for a chain summarises the proportions of the various outlier classes displayed in the second graphic. The second graphic shows the sequence view annotated by issues in geometry and electron density. Residues are color-coded according to the number of geometric quality criteria for which they contain at least one outlier: green = 0, yellow = 1, orange = 2 and red = 3 or more. A red dot above a residue indicates a poor fit to the electron density ($RSRZ > 2$). Stretches of 2 or more consecutive residues without any outlier are shown as a green connector. Residues present in the sample, but not in the model, are shown in grey.

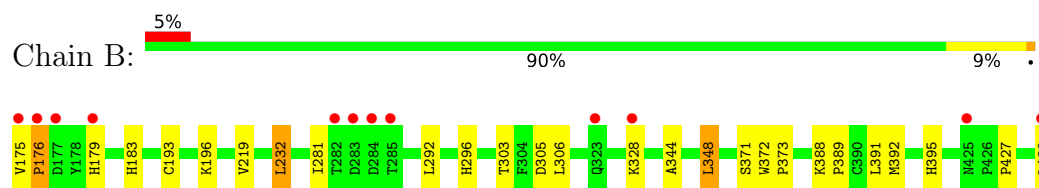
• Molecule 1: Cyclin-dependent kinase 2



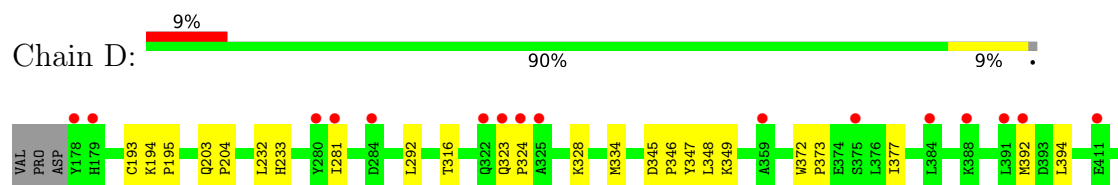
• Molecule 1: Cyclin-dependent kinase 2

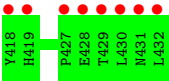


• Molecule 2: Cyclin-A2



• Molecule 2: Cyclin-A2





4 Data and refinement statistics

Property	Value	Source
Space group	P 21 21 21	Depositor
Cell constants a, b, c, α , β , γ	74.13Å 132.93Å 148.08Å 90.00° 90.00° 90.00°	Depositor
Resolution (Å)	30.39 – 2.00 30.39 – 2.00	Depositor EDS
% Data completeness (in resolution range)	98.8 (30.39-2.00) 98.8 (30.39-2.00)	Depositor EDS
R_{merge}	(Not available)	Depositor
R_{sym}	(Not available)	Depositor
$\langle I/\sigma(I) \rangle$ ¹	2.00 (at 2.00Å)	Xtriage
Refinement program	REFMAC 5.5.0109	Depositor
R, R_{free}	0.213 , 0.234 0.228 , 0.247	Depositor DCC
R_{free} test set	4962 reflections (4.99%)	wwPDB-VP
Wilson B-factor (Å ²)	29.9	Xtriage
Anisotropy	0.120	Xtriage
Bulk solvent k_{sol} (e/Å ³), B_{sol} (Å ²)	0.36 , 34.8	EDS
L-test for twinning ²	$\langle L \rangle = 0.44$, $\langle L^2 \rangle = 0.26$	Xtriage
Estimated twinning fraction	No twinning to report.	Xtriage
F_o, F_c correlation	0.94	EDS
Total number of atoms	9466	wwPDB-VP
Average B, all atoms (Å ²)	35.0	wwPDB-VP

Xtriage's analysis on translational NCS is as follows: *The largest off-origin peak in the Patterson function is 2.73% of the height of the origin peak. No significant pseudotranslation is detected.*

¹Intensities estimated from amplitudes.

²Theoretical values of $\langle |L| \rangle$, $\langle L^2 \rangle$ for acentric reflections are 0.5, 0.333 respectively for untwinned datasets, and 0.375, 0.2 for perfectly twinned datasets.

5 Model quality

5.1 Standard geometry

Bond lengths and bond angles in the following residue types are not validated in this section: TPO, SGM, 1RO, DMS

The Z score for a bond length (or angle) is the number of standard deviations the observed value is removed from the expected value. A bond length (or angle) with $|Z| > 5$ is considered an outlier worth inspection. RMSZ is the root-mean-square of all Z scores of the bond lengths (or angles).

Mol	Chain	Bond lengths		Bond angles	
		RMSZ	$\# Z > 5$	RMSZ	$\# Z > 5$
1	A	0.53	1/2439 (0.0%)	0.80	4/3309 (0.1%)
1	C	0.52	0/2460	0.79	2/3340 (0.1%)
2	B	0.44	0/2159	0.81	0/2933
2	D	0.44	0/2121	0.81	0/2879
All	All	0.49	1/9179 (0.0%)	0.80	6/12461 (0.0%)

Chiral center outliers are detected by calculating the chiral volume of a chiral center and verifying if the center is modelled as a planar moiety or with the opposite hand. A planarity outlier is detected by checking planarity of atoms in a peptide group, atoms in a mainchain group or atoms of a sidechain that are expected to be planar.

Mol	Chain	#Chirality outliers	#Planarity outliers
1	C	0	1

All (1) bond length outliers are listed below:

Mol	Chain	Res	Type	Atoms	Z	Observed(Å)	Ideal(Å)
1	A	88	LYS	C-O	-6.03	1.17	1.24

All (6) bond angle outliers are listed below:

Mol	Chain	Res	Type	Atoms	Z	Observed(°)	Ideal(°)
1	A	84	HIS	N-CA-CB	-7.07	99.23	110.19
1	A	84	HIS	N-CA-C	6.46	121.34	112.04
1	A	253	PRO	N-CA-C	6.33	118.42	110.70
1	A	83	LEU	N-CA-C	-6.30	99.08	109.80
1	C	163	VAL	N-CA-C	6.11	119.43	109.78
1	C	253	PRO	N-CA-C	5.76	117.73	110.70

There are no chirality outliers.

All (1) planarity outliers are listed below:

Mol	Chain	Res	Type	Group
1	C	162	GLU	Peptide

5.2 Too-close contacts [i](#)

In the following table, the Non-H and H(model) columns list the number of non-hydrogen atoms and hydrogen atoms in the chain respectively. The H(added) column lists the number of hydrogen atoms added and optimized by MolProbity. The Clashes column lists the number of clashes within the asymmetric unit, whereas Symm-Clashes lists symmetry-related clashes.

Mol	Chain	Non-H	H(model)	H(added)	Clashes	Symm-Clashes
1	A	2390	0	2430	23	0
1	C	2410	0	2445	24	0
2	B	2108	0	2122	15	0
2	D	2071	0	2093	12	0
3	A	24	0	13	9	0
3	C	24	0	13	8	0
4	A	4	0	6	0	0
5	B	6	0	8	1	0
5	D	6	0	8	1	0
6	A	145	0	0	2	0
6	B	111	0	0	1	0
6	C	98	0	0	2	0
6	D	69	0	0	2	0
All	All	9466	0	9138	83	0

The all-atom clashscore is defined as the number of clashes found per 1000 atoms (including hydrogen atoms). The all-atom clashscore for this structure is 5.

All (83) close contacts within the same asymmetric unit are listed below, sorted by their clash magnitude.

Atom-1	Atom-2	Interatomic distance (Å)	Clash overlap (Å)
3:C:301:1RO:O1	3:C:301:1RO:H13	1.62	0.98
3:A:301:1RO:O1	3:A:301:1RO:H13	1.69	0.92
3:A:301:1RO:O1	3:A:301:1RO:C2	2.19	0.91
3:C:301:1RO:O1	3:C:301:1RO:C2	2.20	0.87
2:B:193:CYS:SG	5:B:501:SGM:S1	2.35	0.78
3:A:301:1RO:C19	3:A:301:1RO:N2	2.43	0.78
3:C:301:1RO:N2	3:C:301:1RO:C19	2.47	0.75
1:A:60:HIS:CD2	1:A:62:ASN:H	2.08	0.70

Continued on next page...

Continued from previous page...

Atom-1	Atom-2	Interatomic distance (Å)	Clash overlap (Å)
3:C:301:1RO:H13	3:C:301:1RO:C13	2.19	0.70
1:C:103[B]:LEU:O	1:C:103[B]:LEU:CD2	2.42	0.68
1:A:60:HIS:HD2	1:A:62:ASN:H	1.40	0.68
1:C:103[B]:LEU:O	1:C:103[B]:LEU:HD22	1.95	0.65
1:C:129:LYS:HD3	1:C:165[A]:THR:HG21	1.78	0.65
3:A:301:1RO:H13	3:A:301:1RO:C13	2.24	0.65
2:D:193:CYS:SG	5:D:501:SGM:S1	2.88	0.64
1:A:13:GLY:HA2	3:A:301:1RO:H2	1.79	0.64
1:C:60:HIS:HD2	1:C:62:ASN:H	1.44	0.63
1:C:60:HIS:CD2	1:C:62:ASN:H	2.17	0.61
2:B:219:VAL:HG22	2:B:232:LEU:HD11	1.82	0.60
1:A:82:PHE:CD2	1:A:83:LEU:O	2.55	0.60
1:A:177:CYS:HB2	1:A:233:MET:HE3	1.84	0.59
1:C:103[B]:LEU:CD2	1:C:103[B]:LEU:C	2.75	0.58
1:A:252[B]:VAL:HG13	1:A:252[B]:VAL:O	2.04	0.58
1:A:94:SER:OG	1:A:295:HIS:HE1	1.86	0.57
1:A:295:HIS:HD2	1:A:297:ARG:H	1.52	0.57
3:A:301:1RO:C2	3:A:301:1RO:C13	2.82	0.55
2:B:183:HIS:HD2	6:B:666:HOH:O	1.88	0.55
2:B:176:PRO:HD2	2:B:179[B]:HIS:NE2	2.23	0.53
1:A:81:GLU:O	3:A:301:1RO:H9	2.09	0.53
2:B:344:ALA:HB1	2:B:348:LEU:HD22	1.89	0.53
2:B:391:LEU:HD23	2:B:432:LEU:HD11	1.89	0.53
1:C:103[B]:LEU:O	1:C:103[B]:LEU:HD23	2.09	0.53
1:C:98:GLY:HA2	1:C:199:ARG:HD3	1.89	0.53
2:B:388:LYS:O	2:B:392:MET:HG2	2.10	0.52
2:B:388:LYS:HG3	2:B:432:LEU:HD13	1.93	0.50
1:C:13:GLY:HA3	3:C:301:1RO:H2	1.93	0.50
1:C:103[B]:LEU:HD22	1:C:103[B]:LEU:C	2.36	0.49
3:C:301:1RO:C2	3:C:301:1RO:C13	2.82	0.48
1:C:13:GLY:CA	3:C:301:1RO:H2	2.44	0.48
1:C:131:GLU:O	3:C:301:1RO:H4	2.14	0.48
2:B:395:HIS:HE1	2:B:427:PRO:O	1.97	0.47
2:B:303[A]:THR:HG23	2:B:305:ASP:OD2	2.15	0.47
1:C:52:ILE:HD11	1:C:78:LEU:HD21	1.96	0.46
1:A:97:THR:HG22	6:A:539:HOH:O	2.15	0.46
1:C:198:THR:O	1:C:199:ARG:HB2	2.15	0.46
2:D:347:TYR:OH	2:D:394:LEU:HA	2.15	0.45
1:C:62:ASN:ND2	1:C:110:GLN:HB3	2.32	0.45
1:A:177:CYS:HB2	1:A:233:MET:CE	2.47	0.45
1:C:295:HIS:HD2	6:C:439:HOH:O	1.99	0.45

Continued on next page...

Continued from previous page...

Atom-1	Atom-2	Interatomic distance (Å)	Clash overlap (Å)
2:D:346:PRO:O	2:D:349:LYS:HG2	2.17	0.45
2:B:388:LYS:HB3	2:B:389:PRO:HD3	1.99	0.44
2:D:392:MET:HA	2:D:392:MET:HE2	1.98	0.44
1:A:60:HIS:HE1	6:A:432:HOH:O	2.01	0.44
1:A:55:LEU:HD12	1:A:55:LEU:HA	1.90	0.43
1:A:131:GLU:O	3:A:301:1RO:H4	2.18	0.43
2:B:371:SER:O	2:B:372:TRP:C	2.61	0.43
1:C:55:LEU:HD12	1:C:55:LEU:HA	1.93	0.43
2:D:345:ASP:HA	2:D:346:PRO:HA	1.83	0.43
1:A:137:THR:O	1:A:293:VAL:HG22	2.18	0.43
2:D:233:HIS:HD2	6:D:663:HOH:O	2.01	0.43
1:C:155:PRO:HD2	2:D:316:THR:HB	2.02	0.42
3:A:301:1RO:N2	3:A:301:1RO:C23	2.81	0.42
1:A:223:ASP:H	1:A:226:VAL:HG12	1.83	0.42
2:B:281:ILE:H	2:B:281:ILE:HG13	1.76	0.42
1:C:227:TRP:CZ2	1:C:233:MET:HE1	2.55	0.42
2:D:372:TRP:HA	2:D:373:PRO:HD3	1.91	0.42
2:D:233:HIS:HE1	6:D:656:HOH:O	2.03	0.42
1:A:91:MET:O	1:A:199:ARG:NH1	2.53	0.42
1:C:51:GLU:O	1:C:55:LEU:HB2	2.20	0.41
1:A:75:LYS:HE3	1:A:77:TYR:OH	2.20	0.41
1:C:83[B]:LEU:HD12	1:C:136:ASN:HB3	2.01	0.41
2:D:194:LYS:HA	2:D:195:PRO:HD3	1.95	0.41
1:A:49:ILE:HG23	2:B:306:LEU:HD12	2.02	0.41
1:C:249:SER:HA	1:C:260:ARG:HD2	2.03	0.41
1:C:272:ASN:HB3	6:C:480:HOH:O	2.20	0.41
2:D:323:GLN:HA	2:D:324:PRO:HA	1.84	0.41
1:A:51:GLU:O	1:A:55:LEU:HB2	2.21	0.41
2:D:203:GLN:HA	2:D:204:PRO:HD3	1.92	0.41
1:A:1:MET:HE1	1:A:32:LEU:HD13	2.03	0.41
2:B:372:TRP:HA	2:B:373:PRO:HD3	1.92	0.40
1:A:256:ASP:O	1:A:260:ARG:HG3	2.21	0.40
1:C:202:LEU:HD13	1:C:203:PHE:CE2	2.57	0.40
1:A:44:VAL:HA	1:A:45:PRO:HD3	1.95	0.40

There are no symmetry-related clashes.

5.3 Torsion angles

5.3.1 Protein backbone

In the following table, the Percentiles column shows the percent Ramachandran outliers of the chain as a percentile score with respect to all X-ray entries followed by that with respect to entries of similar resolution.

The Analysed column shows the number of residues for which the backbone conformation was analysed, and the total number of residues.

Mol	Chain	Analysed	Favoured	Allowed	Outliers	Percentiles	
1	A	292/299 (98%)	285 (98%)	6 (2%)	1 (0%)	36	35
1	C	297/299 (99%)	287 (97%)	9 (3%)	1 (0%)	36	35
2	B	259/258 (100%)	255 (98%)	3 (1%)	1 (0%)	30	27
2	D	254/258 (98%)	251 (99%)	3 (1%)	0	100	100
All	All	1102/1114 (99%)	1078 (98%)	21 (2%)	3 (0%)	36	35

All (3) Ramachandran outliers are listed below:

Mol	Chain	Res	Type
2	B	176	PRO
1	A	164	VAL
1	C	164	VAL

5.3.2 Protein sidechains

In the following table, the Percentiles column shows the percent sidechain outliers of the chain as a percentile score with respect to all X-ray entries followed by that with respect to entries of similar resolution.

The Analysed column shows the number of residues for which the sidechain conformation was analysed, and the total number of residues.

Mol	Chain	Analysed	Rotameric	Outliers	Percentiles	
1	A	261/263 (99%)	251 (96%)	10 (4%)	29	29
1	C	264/263 (100%)	252 (96%)	12 (4%)	24	23
2	B	235/232 (101%)	228 (97%)	7 (3%)	36	38
2	D	230/232 (99%)	223 (97%)	7 (3%)	36	38
All	All	990/990 (100%)	954 (96%)	36 (4%)	32	31

All (36) residues with a non-rotameric sidechain are listed below:

Mol	Chain	Res	Type
1	A	35	ILE
1	A	55	LEU
1	A	96	LEU
1	A	101	LEU
1	A	148	LEU
1	A	150	ARG
1	A	161	HIS
1	A	273	LYS
1	A	293	VAL
1	A	296	LEU
2	B	175	VAL
2	B	196	LYS
2	B	232	LEU
2	B	292	LEU
2	B	296	HIS
2	B	328	LYS
2	B	348	LEU
1	C	38	ASP
1	C	55	LEU
1	C	103[A]	LEU
1	C	103[B]	LEU
1	C	148	LEU
1	C	150	ARG
1	C	165[A]	THR
1	C	165[B]	THR
1	C	175	LEU
1	C	202	LEU
1	C	231	THR
1	C	251	VAL
2	D	232	LEU
2	D	281	ILE
2	D	292	LEU
2	D	328	LYS
2	D	334	MET
2	D	348	LEU
2	D	377	ILE

Sometimes sidechains can be flipped to improve hydrogen bonding and reduce clashes. All (25) such sidechains are listed below:

Mol	Chain	Res	Type
1	A	60	HIS
1	A	74	ASN
1	A	84	HIS

Continued on next page...

Continued from previous page...

Mol	Chain	Res	Type
1	A	246	GLN
1	A	265	GLN
1	A	272	ASN
1	A	295	HIS
2	B	183	HIS
2	B	228	GLN
2	B	254	GLN
2	B	296	HIS
2	B	395	HIS
2	B	406	GLN
2	B	425	ASN
1	C	3	ASN
1	C	60	HIS
1	C	62	ASN
1	C	85	GLN
1	C	119	HIS
1	C	265	GLN
1	C	268	HIS
2	D	233	HIS
2	D	254	GLN
2	D	313	GLN
2	D	317	GLN

5.3.3 RNA ⓘ

There are no RNA molecules in this entry.

5.4 Non-standard residues in protein, DNA, RNA chains ⓘ

2 non-standard protein/DNA/RNA residues are modelled in this entry.

In the following table, the Counts columns list the number of bonds (or angles) for which Mogul statistics could be retrieved, the number of bonds (or angles) that are observed in the model and the number of bonds (or angles) that are defined in the Chemical Component Dictionary. The Link column lists molecule types, if any, to which the group is linked. The Z score for a bond length (or angle) is the number of standard deviations the observed value is removed from the expected value. A bond length (or angle) with $|Z| > 2$ is considered an outlier worth inspection. RMSZ is the root-mean-square of all Z scores of the bond lengths (or angles).

Mol	Type	Chain	Res	Link	Bond lengths			Bond angles		
					Counts	RMSZ	$\# Z > 2$	Counts	RMSZ	$\# Z > 2$
1	TPO	A	160	1	8,10,11	0.82	0	10,14,16	1.12	0
1	TPO	C	160	1	8,10,11	0.78	0	10,14,16	1.00	0

In the following table, the Chirals column lists the number of chiral outliers, the number of chiral centers analysed, the number of these observed in the model and the number defined in the Chemical Component Dictionary. Similar counts are reported in the Torsion and Rings columns. '-' means no outliers of that kind were identified.

Mol	Type	Chain	Res	Link	Chirals	Torsions	Rings
1	TPO	A	160	1	-	0/9/11/13	-
1	TPO	C	160	1	-	1/9/11/13	-

There are no bond length outliers.

There are no bond angle outliers.

There are no chirality outliers.

All (1) torsion outliers are listed below:

Mol	Chain	Res	Type	Atoms
1	C	160	TPO	O-C-CA-CB

There are no ring outliers.

No monomer is involved in short contacts.

5.5 Carbohydrates [i](#)

There are no oligosaccharides in this entry.

5.6 Ligand geometry [i](#)

5 ligands are modelled in this entry.

In the following table, the Counts columns list the number of bonds (or angles) for which Mogul statistics could be retrieved, the number of bonds (or angles) that are observed in the model and the number of bonds (or angles) that are defined in the Chemical Component Dictionary. The Link column lists molecule types, if any, to which the group is linked. The Z score for a bond length (or angle) is the number of standard deviations the observed value is removed from the expected value. A bond length (or angle) with $|Z| > 2$ is considered an outlier worth inspection. RMSZ is the root-mean-square of all Z scores of the bond lengths (or angles).

Mol	Type	Chain	Res	Link	Bond lengths			Bond angles		
					Counts	RMSZ	$\# Z > 2$	Counts	RMSZ	$\# Z > 2$
4	DMS	A	302	-	3,3,3	2.71	1 (33%)	3,3,3	0.57	0
3	1RO	C	301	-	27,27,27	2.98	5 (18%)	37,37,37	3.62	13 (35%)
5	SGM	D	501	-	5,5,5	0.32	0	5,5,5	0.49	0
5	SGM	B	501	-	5,5,5	0.37	0	5,5,5	0.58	0

Mol	Type	Chain	Res	Link	Bond lengths			Bond angles		
					Counts	RMSZ	# Z > 2	Counts	RMSZ	# Z > 2
3	1RO	A	301	-	27,27,27	3.17	4 (14%)	37,37,37	3.88	14 (37%)

In the following table, the Chirals column lists the number of chiral outliers, the number of chiral centers analysed, the number of these observed in the model and the number defined in the Chemical Component Dictionary. Similar counts are reported in the Torsion and Rings columns. '-' means no outliers of that kind were identified.

Mol	Type	Chain	Res	Link	Chirals	Torsions	Rings
5	SGM	D	501	-	-	0/4/4/4	-
5	SGM	B	501	-	-	1/4/4/4	-
3	1RO	A	301	-	-	3/9/21/21	0/4/4/4
3	1RO	C	301	-	-	3/9/21/21	0/4/4/4

All (10) bond length outliers are listed below:

Mol	Chain	Res	Type	Atoms	Z	Observed(Å)	Ideal(Å)
3	A	301	1RO	C11-C12	14.53	1.50	1.34
3	C	301	1RO	C11-C12	13.50	1.48	1.34
4	A	302	DMS	O-S	4.54	1.80	1.50
3	C	301	1RO	C3-C4	4.27	1.48	1.42
3	A	301	1RO	C3-C4	4.26	1.48	1.42
3	A	301	1RO	C13-N2	-2.90	1.31	1.38
3	C	301	1RO	C13-N2	-2.62	1.32	1.38
3	C	301	1RO	O1-C13	2.37	1.28	1.23
3	A	301	1RO	O1-C13	2.28	1.27	1.23
3	C	301	1RO	C15-N2	2.03	1.34	1.31

All (27) bond angle outliers are listed below:

Mol	Chain	Res	Type	Atoms	Z	Observed(°)	Ideal(°)
3	A	301	1RO	N3-C15-N2	-13.12	113.68	123.99
3	C	301	1RO	N3-C15-N2	-10.87	115.44	123.99
3	A	301	1RO	C1-C11-C12	-10.13	117.29	130.92
3	C	301	1RO	C1-C11-C12	-10.08	117.36	130.92
3	A	301	1RO	S1-C15-N3	8.14	129.82	121.32
3	A	301	1RO	C12-C13-N2	8.12	118.38	113.43
3	C	301	1RO	C12-C13-N2	7.21	117.82	113.43
3	C	301	1RO	C11-C12-C13	7.01	128.90	122.24
3	C	301	1RO	S1-C15-N3	6.68	128.29	121.32
3	A	301	1RO	C13-C12-S1	-5.84	105.71	109.15
3	C	301	1RO	C13-C12-S1	-5.27	106.04	109.15

Continued on next page...

Continued from previous page...

Mol	Chain	Res	Type	Atoms	Z	Observed(°)	Ideal(°)
3	A	301	1RO	C11-C12-C13	4.69	126.70	122.24
3	A	301	1RO	O1-C13-C12	4.36	125.82	122.59
3	C	301	1RO	O1-C13-C12	4.16	125.67	122.59
3	A	301	1RO	O1-C13-N2	-4.11	115.80	124.27
3	C	301	1RO	O1-C13-N2	-3.76	116.51	124.27
3	C	301	1RO	C11-C12-S1	-3.26	125.06	129.25
3	A	301	1RO	C9-N1-C4	2.85	121.24	116.93
3	A	301	1RO	C5-C4-N1	2.69	122.89	118.55
3	A	301	1RO	C22-C21-S2	-2.66	106.52	113.02
3	C	301	1RO	C22-C21-S2	-2.61	106.64	113.02
3	C	301	1RO	C9-N1-C4	2.56	120.80	116.93
3	A	301	1RO	C3-C4-N1	-2.39	118.74	122.03
3	C	301	1RO	C3-C4-N1	-2.32	118.83	122.03
3	C	301	1RO	C5-C4-N1	2.28	122.23	118.55
3	A	301	1RO	C19-C18-N3	2.15	116.73	112.30
3	A	301	1RO	C18-C19-C23	2.12	133.87	127.56

There are no chirality outliers.

All (7) torsion outliers are listed below:

Mol	Chain	Res	Type	Atoms
3	A	301	1RO	C19-C18-N3-C15
3	A	301	1RO	C1-C11-C12-C13
3	C	301	1RO	C1-C11-C12-C13
3	C	301	1RO	C19-C18-N3-C15
3	A	301	1RO	C1-C11-C12-S1
3	C	301	1RO	C1-C11-C12-S1
5	B	501	SGM	S1-C1-C2-O2

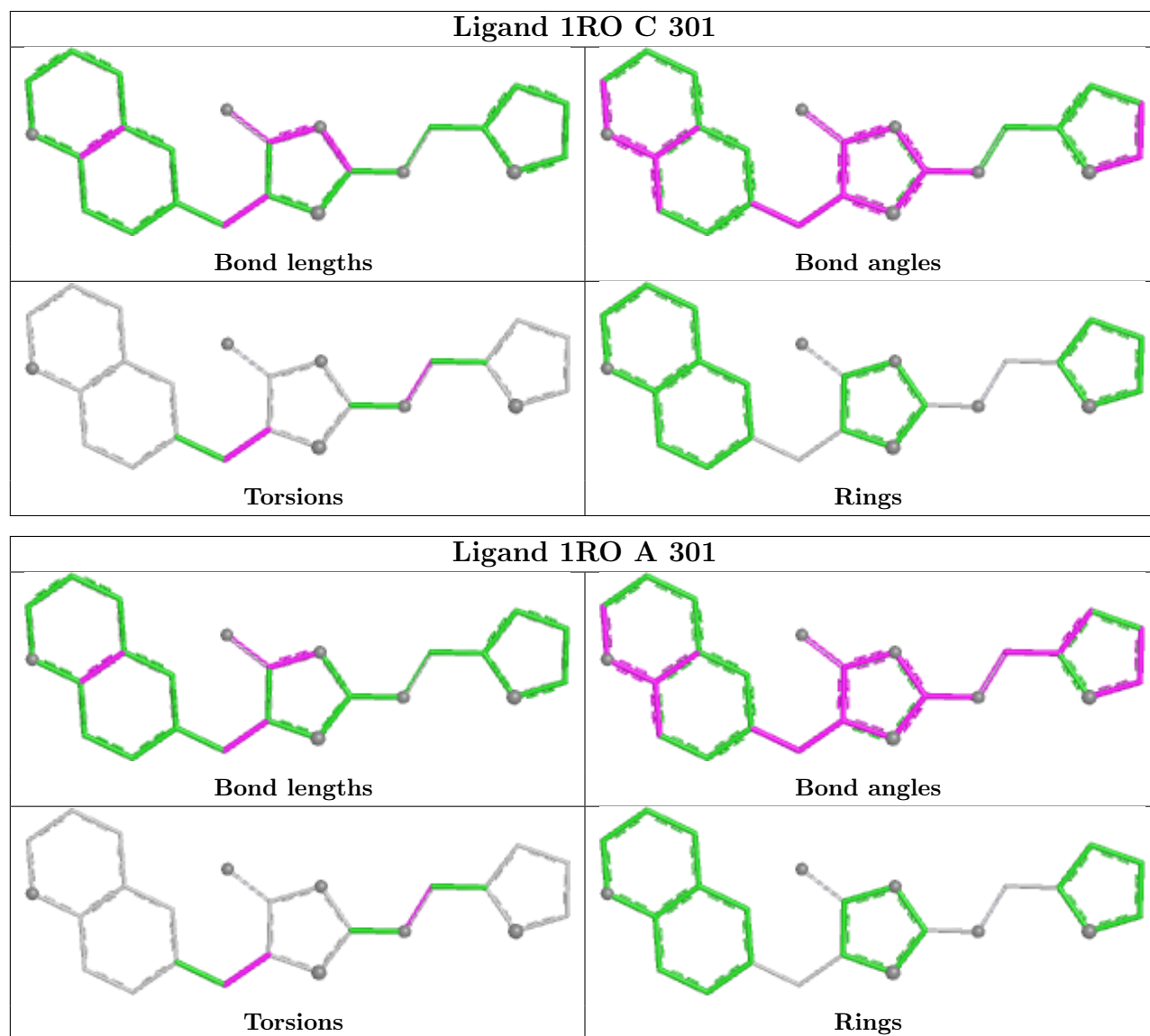
There are no ring outliers.

4 monomers are involved in 19 short contacts:

Mol	Chain	Res	Type	Clashes	Symm-Clashes
3	C	301	1RO	8	0
5	D	501	SGM	1	0
5	B	501	SGM	1	0
3	A	301	1RO	9	0

The following is a two-dimensional graphical depiction of Mogul quality analysis of bond lengths, bond angles, torsion angles, and ring geometry for all instances of the Ligand of Interest. In addition, ligands with molecular weight > 250 and outliers as shown on the validation Tables will

also be included. For torsion angles, if less than 5% of the Mogul distribution of torsion angles is within 10 degrees of the torsion angle in question, then that torsion angle is considered an outlier. Any bond that is central to one or more torsion angles identified as an outlier by Mogul will be highlighted in the graph. For rings, the root-mean-square deviation (RMSD) between the ring in question and similar rings identified by Mogul is calculated over all ring torsion angles. If the average RMSD is greater than 60 degrees and the minimal RMSD between the ring in question and any Mogul-identified rings is also greater than 60 degrees, then that ring is considered an outlier. The outliers are highlighted in purple. The color gray indicates Mogul did not find sufficient equivalents in the CSD to analyse the geometry.



5.7 Other polymers [i](#)

There are no such residues in this entry.

5.8 Polymer linkage issues ⓘ

There are no chain breaks in this entry.

6 Fit of model and data ⓘ

6.1 Protein, DNA and RNA chains ⓘ

In the following table, the column labelled ‘#RSRZ > 2’ contains the number (and percentage) of RSRZ outliers, followed by percent RSRZ outliers for the chain as percentile scores relative to all X-ray entries and entries of similar resolution. The OWAB column contains the minimum, median, 95th percentile and maximum values of the occupancy-weighted average B-factor per residue. The column labelled ‘Q < 0.9’ lists the number of (and percentage) of residues with an average occupancy less than 0.9.

Mol	Chain	Analysed	<RSRZ>	#RSRZ > 2		OWAB(Å ²)	Q < 0.9
1	A	294/299 (98%)	0.11	20 (6%)	23 22	15, 27, 48, 63	3 (1%)
1	C	296/299 (98%)	0.39	16 (5%)	31 30	14, 35, 50, 57	7 (2%)
2	B	258/258 (100%)	0.19	12 (4%)	36 35	13, 32, 50, 63	5 (1%)
2	D	255/258 (98%)	0.63	24 (9%)	14 13	22, 42, 74, 96	1 (0%)
All	All	1103/1114 (99%)	0.32	72 (6%)	25 23	13, 33, 59, 96	16 (1%)

All (72) RSRZ outliers are listed below:

Mol	Chain	Res	Type	RSRZ
2	B	175	VAL	7.1
2	D	179[A]	HIS	5.2
1	A	298	LEU	4.8
2	D	432	LEU	4.5
2	D	323	GLN	4.4
2	B	176	PRO	4.2
1	C	295	HIS	4.1
1	A	72	THR	4.0
1	A	0	SER	3.9
2	D	429	THR	3.9
1	C	162	GLU	3.9
1	C	72	THR	3.8
2	D	280	TYR	3.8
2	B	177[A]	ASP	3.7
2	D	284	ASP	3.5
1	A	71	HIS	3.5
2	D	324	PRO	3.2
1	C	71	HIS	3.1
1	C	161	HIS	3.1
1	C	296	LEU	3.0
2	B	179[A]	HIS	3.0

Continued on next page...

Continued from previous page...

Mol	Chain	Res	Type	RSRZ
2	D	419	HIS	3.0
1	A	74	ASN	2.9
2	D	431	ASN	2.9
2	B	282	THR	2.9
2	D	322	GLN	2.8
1	A	2	GLU	2.8
2	B	432	LEU	2.8
2	D	428	GLU	2.7
2	D	375	SER	2.7
1	C	225	VAL	2.7
1	C	0	SER	2.6
2	B	328	LYS	2.6
1	A	14	THR	2.5
2	B	284	ASP	2.5
1	A	5	GLN	2.5
1	A	206	ASP	2.5
1	C	231	THR	2.5
2	D	178	TYR	2.4
1	A	97	THR	2.4
2	B	283	ASP	2.4
2	D	359	ALA	2.3
1	A	59	ASN	2.3
2	D	388	LYS	2.3
1	C	240	PHE	2.3
1	A	10	ILE	2.3
1	A	35	ILE	2.3
1	C	230	VAL	2.3
2	D	325	ALA	2.3
1	A	37	LEU	2.3
1	C	177	CYS	2.2
1	A	96	LEU	2.2
2	D	391	LEU	2.2
2	D	430	LEU	2.2
1	A	12	GLU	2.2
2	B	285	THR	2.2
2	D	281	ILE	2.1
2	D	411	GLU	2.1
1	A	246	GLN	2.1
2	B	323	GLN	2.1
2	D	384	LEU	2.1
1	A	88	LYS	2.1
2	D	392	MET	2.1

Continued on next page...

Continued from previous page...

Mol	Chain	Res	Type	RSRZ
1	C	287	GLN	2.1
1	C	251	VAL	2.1
1	C	2	GLU	2.1
2	B	425	ASN	2.1
2	D	427	PRO	2.1
1	A	73	GLU	2.0
1	C	165[A]	THR	2.0
2	D	418	TYR	2.0
1	A	83	LEU	2.0

6.2 Non-standard residues in protein, DNA, RNA chains [i](#)

In the following table, the Atoms column lists the number of modelled atoms in the group and the number defined in the chemical component dictionary. The B-factors column lists the minimum, median, 95th percentile and maximum values of B factors of atoms in the group. The column labelled 'Q< 0.9' lists the number of atoms with occupancy less than 0.9.

Mol	Type	Chain	Res	Atoms	RSCC	RSR	B-factors(Å ²)	Q<0.9
1	TPO	C	160	11/12	0.98	0.06	26,30,33,34	0
1	TPO	A	160	11/12	0.99	0.05	19,22,22,23	0

6.3 Carbohydrates [i](#)

There are no oligosaccharides in this entry.

6.4 Ligands [i](#)

In the following table, the Atoms column lists the number of modelled atoms in the group and the number defined in the chemical component dictionary. The B-factors column lists the minimum, median, 95th percentile and maximum values of B factors of atoms in the group. The column labelled 'Q< 0.9' lists the number of atoms with occupancy less than 0.9.

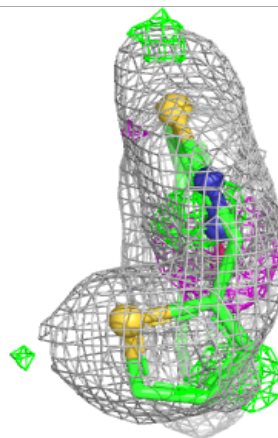
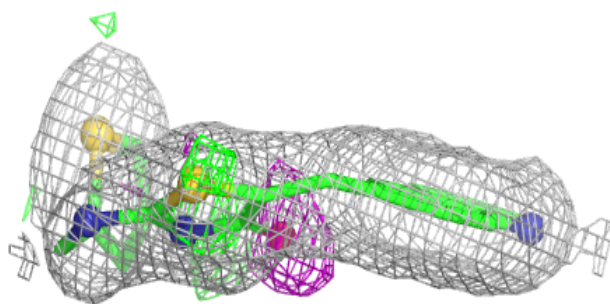
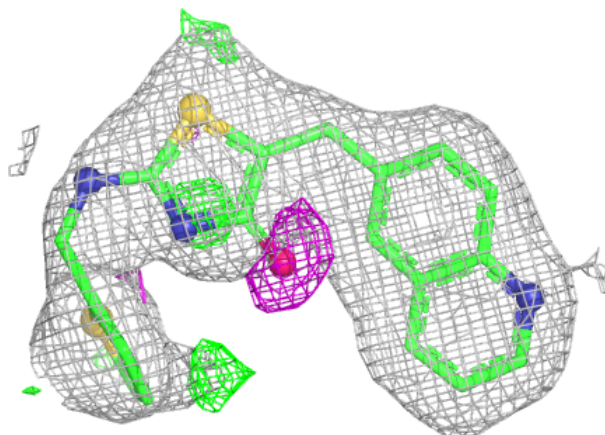
Mol	Type	Chain	Res	Atoms	RSCC	RSR	B-factors(Å ²)	Q<0.9
5	SGM	D	501	6/6	0.81	0.16	51,51,51,51	0
3	1RO	C	301	24/24	0.88	0.12	33,42,48,48	0
3	1RO	A	301	24/24	0.88	0.11	33,41,42,44	0
5	SGM	B	501	6/6	0.90	0.13	41,42,43,43	0
4	DMS	A	302	4/4	0.92	0.17	58,59,59,59	0

The following is a graphical depiction of the model fit to experimental electron density of all instances of the Ligand of Interest. In addition, ligands with molecular weight > 250 and outliers

as shown on the geometry validation Tables will also be included. Each fit is shown from different orientation to approximate a three-dimensional view.

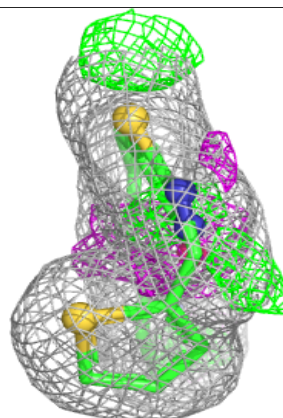
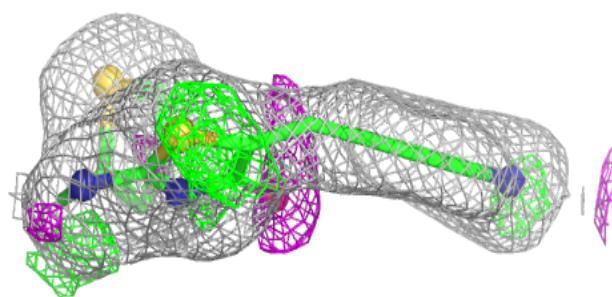
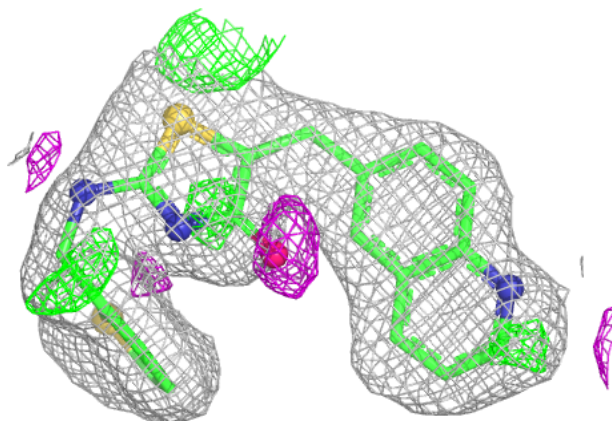
Electron density around 1RO C 301:

$2mF_o-DF_c$ (at 0.7 rmsd) in gray
 mF_o-DF_c (at 3 rmsd) in purple (negative)
and green (positive)



Electron density around 1RO A 301:

$2mF_o-DF_c$ (at 0.7 rmsd) in gray
 mF_o-DF_c (at 3 rmsd) in purple (negative)
and green (positive)



6.5 Other polymers ⓘ

There are no such residues in this entry.