



Full wwPDB X-ray Structure Validation Report ⓘ

Jan 15, 2025 – 12:07 pm GMT

PDB ID : 9EPN
Title : Crystal structure of HprS histidine kinase cytoplasmic fragment from Escherichia coli
Authors : Koczurowska, A.; Bujacz, G.; Pietrzyk-Brzezinska, A.J.
Deposited on : 2024-03-19
Resolution : 1.70 Å(reported)

This is a Full wwPDB X-ray Structure Validation Report for a publicly released PDB entry.

We welcome your comments at validation@mail.wwpdb.org

A user guide is available at

<https://www.wwpdb.org/validation/2017/XrayValidationReportHelp>

with specific help available everywhere you see the ⓘ symbol.

The types of validation reports are described at

<http://www.wwpdb.org/validation/2017/FAQs#types>.

The following versions of software and data (see [references ⓘ](#)) were used in the production of this report:

MolProbity : 4.02b-467
Mogul : 1.8.4, CSD as541be (2020)
Xtrriage (Phenix) : 1.13
EDS : 3.0
buster-report : 1.1.7 (2018)
Percentile statistics : 20231227.v01 (using entries in the PDB archive December 27th 2023)
CCP4 : 9.0.003 (Gargrove)
Density-Fitness : 1.0.11
Ideal geometry (proteins) : Engh & Huber (2001)
Ideal geometry (DNA, RNA) : Parkinson et al. (1996)
Validation Pipeline (wwPDB-VP) : 2.40

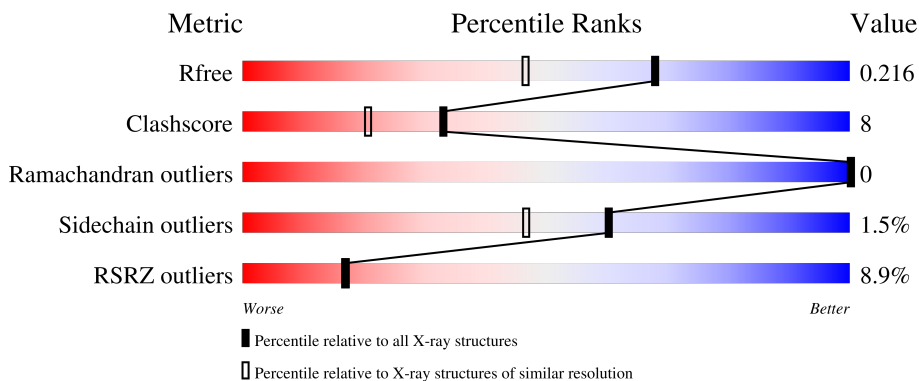
1 Overall quality at a glance

The following experimental techniques were used to determine the structure:

X-RAY DIFFRACTION

The reported resolution of this entry is 1.70 Å.

Percentile scores (ranging between 0-100) for global validation metrics of the entry are shown in the following graphic. The table shows the number of entries on which the scores are based.



Metric	Whole archive (#Entries)	Similar resolution (#Entries, resolution range(Å))
R_{free}	164625	5161 (1.70-1.70)
Clashscore	180529	5671 (1.70-1.70)
Ramachandran outliers	177936	5594 (1.70-1.70)
Sidechain outliers	177891	5594 (1.70-1.70)
RSRZ outliers	164620	5159 (1.70-1.70)

The table below summarises the geometric issues observed across the polymeric chains and their fit to the electron density. The red, orange, yellow and green segments of the lower bar indicate the fraction of residues that contain outliers for ≥ 3 , 2, 1 and 0 types of geometric quality criteria respectively. A grey segment represents the fraction of residues that are not modelled. The numeric value for each fraction is indicated below the corresponding segment, with a dot representing fractions $\leq 5\%$. The upper red bar (where present) indicates the fraction of residues that have poor fit to the electron density. The numeric value is given above the bar.

Mol	Chain	Length	Quality of chain
1	A	277	 9% 78% 18%
1	B	277	 8% 78% 11% 10%

2 Entry composition i

There are 7 unique types of molecules in this entry. The entry contains 4703 atoms, of which 0 are hydrogens and 0 are deuteriums.

In the tables below, the ZeroOcc column contains the number of atoms modelled with zero occupancy, the AltConf column contains the number of residues with at least one atom in alternate conformation and the Trace column contains the number of residues modelled with at most 2 atoms.

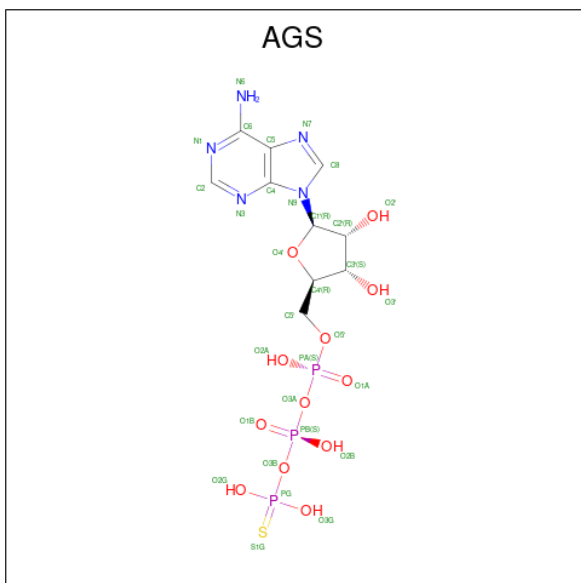
- Molecule 1 is a protein called Sensor histidine kinase HprS.

Mol	Chain	Residues	Atoms					ZeroOcc	AltConf	Trace
			Total	C	N	O	S			
1	A	267	Total 2158	C 1364	N 387	O 402	S 5	0	3	0
1	B	249	Total 2038	C 1291	N 361	O 382	S 4	0	5	0

There are 4 discrepancies between the modelled and reference sequences:

Chain	Residue	Modelled	Actual	Comment	Reference
A	176	MET	-	expression tag	UNP P76339
A	177	ALA	-	expression tag	UNP P76339
B	176	MET	-	expression tag	UNP P76339
B	177	ALA	-	expression tag	UNP P76339

- Molecule 2 is PHOSPHOTHIOPHOSPHORIC ACID-ADENYLATE ESTER (three-letter code: AGS) (formula: $C_{10}H_{16}N_5O_{12}P_3S$) (labeled as "Ligand of Interest" by depositor).

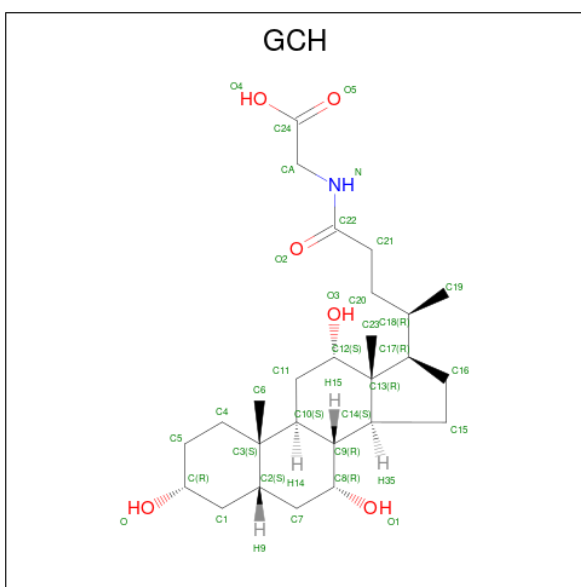


Mol	Chain	Residues	Atoms					ZeroOcc	AltConf	
			Total	C	N	O	P			S
2	A	1	31	10	5	12	3	1	0	0
2	B	1	31	10	5	12	3	1	0	0

- Molecule 3 is MAGNESIUM ION (three-letter code: MG) (formula: Mg) (labeled as "Ligand of Interest" by depositor).

Mol	Chain	Residues	Atoms		ZeroOcc	AltConf
			Total	Mg		
3	A	1	1	1	0	0
3	B	1	1	1	0	0

- Molecule 4 is GLYCOCHOLIC ACID (three-letter code: GCH) (formula: C₂₆H₄₃NO₆).



Mol	Chain	Residues	Atoms				ZeroOcc	AltConf
			Total	C	N	O		
4	A	1	33	26	1	6	0	0
4	B	1	33	26	1	6	0	0

- Molecule 5 is 1,2-ETHANEDIOL (three-letter code: EDO) (formula: C₂H₆O₂).



Mol	Chain	Residues	Atoms	ZeroOcc	AltConf
5	A	1	Total C O 4 2 2	0	0
5	A	1	Total C O 4 2 2	0	0
5	A	1	Total C O 4 2 2	0	0
5	A	1	Total C O 4 2 2	0	0
5	A	1	Total C O 4 2 2	0	0
5	A	1	Total C O 4 2 2	0	0
5	B	1	Total C O 4 2 2	0	0
5	B	1	Total C O 4 2 2	0	0
5	B	1	Total C O 4 2 2	0	0
5	B	1	Total C O 4 2 2	0	0
5	B	1	Total C O 4 2 2	0	0
5	B	1	Total C O 4 2 2	0	0

- Molecule 6 is IMIDAZOLE (three-letter code: IMD) (formula: C₃H₅N₂).



Mol	Chain	Residues	Atoms			ZeroOcc	AltConf
6	A	1	Total	C	N	0	0
			5	3	2		

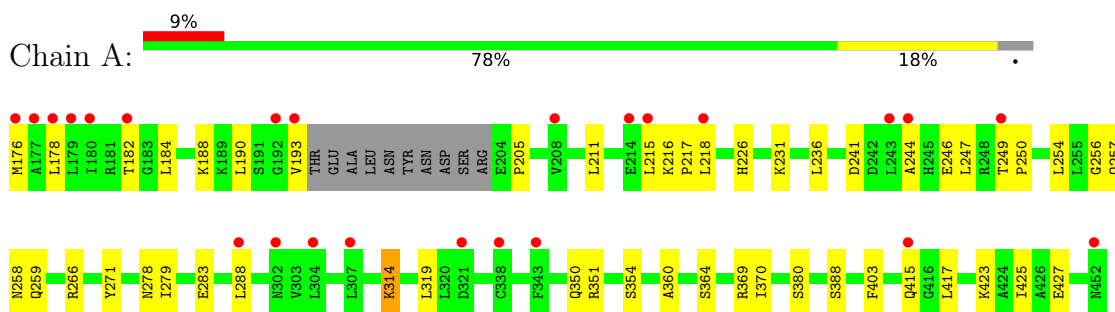
- Molecule 7 is water.

Mol	Chain	Residues	Atoms		ZeroOcc	AltConf
7	A	162	Total	O	0	0
			162	162		
7	B	158	Total	O	0	0
			158	158		

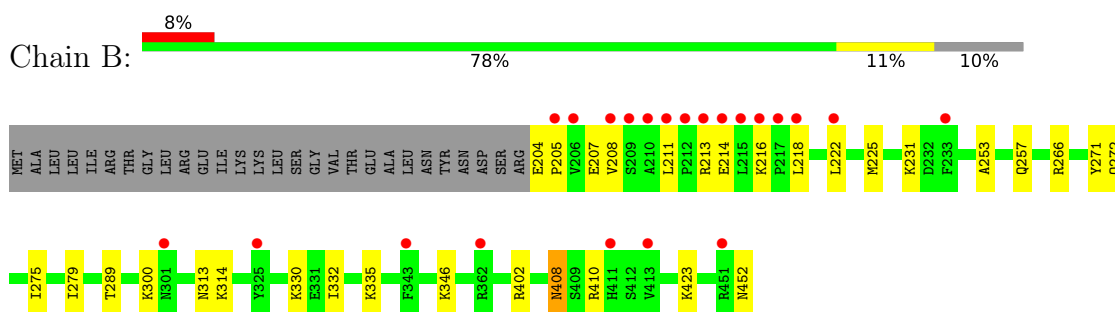
3 Residue-property plots [i](#)

These plots are drawn for all protein, RNA, DNA and oligosaccharide chains in the entry. The first graphic for a chain summarises the proportions of the various outlier classes displayed in the second graphic. The second graphic shows the sequence view annotated by issues in geometry and electron density. Residues are color-coded according to the number of geometric quality criteria for which they contain at least one outlier: green = 0, yellow = 1, orange = 2 and red = 3 or more. A red dot above a residue indicates a poor fit to the electron density ($RSRZ > 2$). Stretches of 2 or more consecutive residues without any outlier are shown as a green connector. Residues present in the sample, but not in the model, are shown in grey.

- Molecule 1: Sensor histidine kinase HprS



- Molecule 1: Sensor histidine kinase HprS



4 Data and refinement statistics

Property	Value	Source
Space group	P 21 21 21	Depositor
Cell constants a, b, c, α , β , γ	64.89Å 92.51Å 118.16Å 90.00° 90.00° 90.00°	Depositor
Resolution (Å)	36.42 – 1.70 36.42 – 1.70	Depositor EDS
% Data completeness (in resolution range)	99.6 (36.42-1.70) 99.7 (36.42-1.70)	Depositor EDS
R_{merge}	(Not available)	Depositor
R_{sym}	(Not available)	Depositor
$\langle I/\sigma(I) \rangle$ ¹	1.10 (at 1.70Å)	Xtrriage
Refinement program	PHENIX (1.20.1_4487: ???)	Depositor
R, R_{free}	0.189 , 0.217 0.188 , 0.216	Depositor DCC
R_{free} test set	2363 reflections (2.67%)	wwPDB-VP
Wilson B-factor (Å ²)	39.4	Xtrriage
Anisotropy	0.391	Xtrriage
Bulk solvent k_{sol} (e/Å ³), B_{sol} (Å ²)	0.35 , 52.9	EDS
L-test for twinning ²	$\langle L \rangle = 0.50$, $\langle L^2 \rangle = 0.33$	Xtrriage
Estimated twinning fraction	No twinning to report.	Xtrriage
F_o, F_c correlation	0.97	EDS
Total number of atoms	4703	wwPDB-VP
Average B, all atoms (Å ²)	59.0	wwPDB-VP

Xtrriage's analysis on translational NCS is as follows: *The largest off-origin peak in the Patterson function is 3.70% of the height of the origin peak. No significant pseudotranslation is detected.*

¹Intensities estimated from amplitudes.

²Theoretical values of $\langle |L| \rangle$, $\langle L^2 \rangle$ for acentric reflections are 0.5, 0.333 respectively for untwinned datasets, and 0.375, 0.2 for perfectly twinned datasets.

5 Model quality [i](#)

5.1 Standard geometry [i](#)

Bond lengths and bond angles in the following residue types are not validated in this section: AGS, EDO, MG, GCH, IMD

The Z score for a bond length (or angle) is the number of standard deviations the observed value is removed from the expected value. A bond length (or angle) with $|Z| > 5$ is considered an outlier worth inspection. RMSZ is the root-mean-square of all Z scores of the bond lengths (or angles).

Mol	Chain	Bond lengths		Bond angles	
		RMSZ	# Z >5	RMSZ	# Z >5
1	A	0.40	0/2199	0.62	0/2964
1	B	0.43	0/2084	0.62	0/2815
All	All	0.42	0/4283	0.62	0/5779

There are no bond length outliers.

There are no bond angle outliers.

There are no chirality outliers.

There are no planarity outliers.

5.2 Too-close contacts [i](#)

In the following table, the Non-H and H(model) columns list the number of non-hydrogen atoms and hydrogen atoms in the chain respectively. The H(added) column lists the number of hydrogen atoms added and optimized by MolProbity. The Clashes column lists the number of clashes within the asymmetric unit, whereas Symm-Clashes lists symmetry-related clashes.

Mol	Chain	Non-H	H(model)	H(added)	Clashes	Symm-Clashes
1	A	2158	0	2217	40	0
1	B	2038	0	2074	35	0
2	A	31	0	12	1	0
2	B	31	0	12	0	0
3	A	1	0	0	0	0
3	B	1	0	0	0	0
4	A	33	0	42	2	0
4	B	33	0	42	1	0
5	A	24	0	36	0	0
5	B	28	0	42	4	0
6	A	5	0	5	0	0

Continued on next page...

Continued from previous page...

Mol	Chain	Non-H	H(model)	H(added)	Clashes	Symm-Clashes
7	A	162	0	0	5	0
7	B	158	0	0	5	0
All	All	4703	0	4482	68	0

The all-atom clashscore is defined as the number of clashes found per 1000 atoms (including hydrogen atoms). The all-atom clashscore for this structure is 8.

All (68) close contacts within the same asymmetric unit are listed below, sorted by their clash magnitude.

Atom-1	Atom-2	Interatomic distance (Å)	Clash overlap (Å)
1:B:408:ASN:HD22	1:B:408:ASN:H	1.17	0.91
1:A:231:LYS:NZ	7:A:601:HOH:O	2.24	0.71
1:A:257:GLN:NE2	7:A:602:HOH:O	2.26	0.68
1:B:257:GLN:NE2	7:B:602:HOH:O	2.27	0.66
1:A:217:PRO:HD2	7:A:603:HOH:O	1.97	0.65
1:B:313:ASN:ND2	7:B:605:HOH:O	2.30	0.64
1:B:314:LYS:NZ	7:B:606:HOH:O	2.31	0.63
1:A:249:THR:HG23	1:A:250:PRO:HD3	1.81	0.63
1:A:217:PRO:CD	7:A:603:HOH:O	2.47	0.63
1:A:279:ILE:O	1:A:283:GLU:HG3	2.01	0.61
1:A:178:LEU:O	1:A:182:THR:HG23	2.01	0.60
1:A:215:LEU:HD12	1:B:218:LEU:HD23	1.86	0.57
1:A:188:LYS:HG2	1:A:193:VAL:HB	1.85	0.57
1:A:319:LEU:HD13	1:A:350[B]:GLN:OE1	2.04	0.57
1:A:360:ALA:HB1	1:A:370:ILE:HD13	1.87	0.56
1:A:314:LYS:N	1:A:314:LYS:HD3	2.21	0.55
1:B:408:ASN:HD22	1:B:408:ASN:N	1.94	0.54
1:B:402:ARG:NH1	5:B:505:EDO:H11	2.23	0.54
1:B:408:ASN:H	1:B:408:ASN:ND2	1.95	0.54
1:A:423:LYS:NZ	7:A:605:HOH:O	2.42	0.53
1:A:266:ARG:HB2	1:A:271:TYR:CE1	2.43	0.53
1:A:271:TYR:HE2	1:B:272:GLN:HG3	1.74	0.52
1:A:226:HIS:NE2	4:A:503:GCH:H25	2.25	0.51
1:A:256:GLY:HA2	1:A:259:GLN:HE21	1.76	0.51
1:B:208:VAL:HA	1:B:211:LEU:HD12	1.94	0.50
1:B:423:LYS:HE3	7:B:714:HOH:O	2.11	0.50
1:A:415:GLN:HB2	2:A:501:AGS:O3G	2.12	0.50
1:A:218:LEU:HD21	1:B:222:LEU:HB3	1.95	0.49
1:B:330:LYS:HB2	1:B:332:ILE:HD12	1.94	0.49
4:A:503:GCH:H9	5:B:505:EDO:H12	1.95	0.49
1:B:207:GLU:HA	1:B:207:GLU:OE1	2.14	0.48

Continued on next page...

Continued from previous page...

Atom-1	Atom-2	Interatomic distance (Å)	Clash overlap (Å)
1:A:351:ARG:HD2	1:A:425:ILE:HD11	1.94	0.48
1:B:204:GLU:O	1:B:204:GLU:HG3	2.13	0.48
1:B:213:ARG:HA	1:B:216:LYS:HD2	1.95	0.48
1:B:275:ILE:O	1:B:279:ILE:HG13	2.14	0.48
1:A:258:ASN:HD22	1:B:275:ILE:HG23	1.79	0.47
1:A:249:THR:HG23	1:A:250:PRO:CD	2.44	0.47
1:B:300:LYS:HG3	5:B:507:EDO:C2	2.46	0.46
1:B:410:ARG:HD3	1:B:410:ARG:HA	1.62	0.46
1:A:423:LYS:O	1:A:427:GLU:HG3	2.15	0.46
1:A:415:GLN:OE1	1:A:417:LEU:HD12	2.15	0.46
1:A:184:LEU:HD22	1:A:205:PRO:O	2.15	0.46
1:A:271:TYR:CD2	1:B:271:TYR:HB3	2.51	0.45
1:B:300:LYS:HB3	1:B:300:LYS:HE3	1.76	0.45
1:A:247:LEU:HD23	1:A:288:LEU:HD12	1.98	0.45
1:B:335:LYS:HA	1:B:335:LYS:HD2	1.78	0.45
1:A:190:LEU:HB3	1:B:218:LEU:HD13	2.00	0.43
1:A:254:LEU:HD11	1:A:278:ASN:HD22	1.83	0.43
1:B:208:VAL:HG22	1:B:216:LYS:HG2	2.00	0.43
1:A:360:ALA:CB	1:A:370:ILE:HD13	2.48	0.43
1:B:204:GLU:N	1:B:205:PRO:CD	2.82	0.42
1:B:214:GLU:HA	1:B:214:GLU:OE1	2.19	0.42
1:B:253:ALA:O	1:B:257:GLN:HG3	2.20	0.42
1:A:211:LEU:O	1:A:216:LYS:NZ	2.53	0.42
1:A:231:LYS:HA	1:A:231:LYS:HD3	1.88	0.42
1:B:231:LYS:HA	1:B:231:LYS:HD2	1.70	0.41
1:A:319:LEU:HD11	1:A:354[A]:SER:OG	2.19	0.41
1:A:288:LEU:HD23	1:A:415:GLN:CD	2.41	0.41
1:A:244:ALA:HA	1:B:289:THR:HB	2.03	0.41
1:A:319:LEU:HD21	1:A:354[A]:SER:OG	2.21	0.41
1:A:184:LEU:HG	1:B:225:MET:HE3	2.03	0.41
1:B:402:ARG:CZ	5:B:505:EDO:H11	2.50	0.41
1:A:364:SER:OG	1:A:388:SER:HB2	2.21	0.40
1:A:246:GLU:HG3	1:A:403:PHE:CE1	2.55	0.40
1:B:266:ARG:HB2	1:B:271:TYR:CE2	2.57	0.40
1:A:236:LEU:HD12	1:A:236:LEU:HA	1.93	0.40
1:B:452:ASN:HB2	4:B:510:GCH:H16	2.03	0.40
1:B:410:ARG:NH2	7:B:610:HOH:O	2.43	0.40

There are no symmetry-related clashes.

5.3 Torsion angles [i](#)

5.3.1 Protein backbone [i](#)

In the following table, the Percentiles column shows the percent Ramachandran outliers of the chain as a percentile score with respect to all X-ray entries followed by that with respect to entries of similar resolution.

The Analysed column shows the number of residues for which the backbone conformation was analysed, and the total number of residues.

Mol	Chain	Analysed	Favoured	Allowed	Outliers	Percentiles	
1	A	266/277 (96%)	263 (99%)	3 (1%)	0	100	100
1	B	252/277 (91%)	249 (99%)	3 (1%)	0	100	100
All	All	518/554 (94%)	512 (99%)	6 (1%)	0	100	100

There are no Ramachandran outliers to report.

5.3.2 Protein sidechains [i](#)

In the following table, the Percentiles column shows the percent sidechain outliers of the chain as a percentile score with respect to all X-ray entries followed by that with respect to entries of similar resolution.

The Analysed column shows the number of residues for which the sidechain conformation was analysed, and the total number of residues.

Mol	Chain	Analysed	Rotameric	Outliers	Percentiles	
1	A	241/247 (98%)	236 (98%)	5 (2%)	48	32
1	B	228/247 (92%)	226 (99%)	2 (1%)	75	67
All	All	469/494 (95%)	462 (98%)	7 (2%)	60	47

All (7) residues with a non-rotameric sidechain are listed below:

Mol	Chain	Res	Type
1	A	176	MET
1	A	241	ASP
1	A	314	LYS
1	A	369	ARG
1	A	380	SER
1	B	346	LYS
1	B	408	ASN

Sometimes sidechains can be flipped to improve hydrogen bonding and reduce clashes. All (10) such sidechains are listed below:

Mol	Chain	Res	Type
1	A	220	GLN
1	A	257	GLN
1	A	258	ASN
1	A	259	GLN
1	A	278	ASN
1	A	339	ASN
1	A	341	GLN
1	A	355	ASN
1	B	257	GLN
1	B	408	ASN

5.3.3 RNA [i](#)

There are no RNA molecules in this entry.

5.4 Non-standard residues in protein, DNA, RNA chains [i](#)

There are no non-standard protein/DNA/RNA residues in this entry.

5.5 Carbohydrates [i](#)

There are no oligosaccharides in this entry.

5.6 Ligand geometry [i](#)

Of 20 ligands modelled in this entry, 2 are monoatomic - leaving 18 for Mogul analysis.

In the following table, the Counts columns list the number of bonds (or angles) for which Mogul statistics could be retrieved, the number of bonds (or angles) that are observed in the model and the number of bonds (or angles) that are defined in the Chemical Component Dictionary. The Link column lists molecule types, if any, to which the group is linked. The Z score for a bond length (or angle) is the number of standard deviations the observed value is removed from the expected value. A bond length (or angle) with $|Z| > 2$ is considered an outlier worth inspection. RMSZ is the root-mean-square of all Z scores of the bond lengths (or angles).

Mol	Type	Chain	Res	Link	Bond lengths			Bond angles		
					Counts	RMSZ	$\# Z > 2$	Counts	RMSZ	$\# Z > 2$
5	EDO	A	508	-	3,3,3	0.59	0	2,2,2	0.14	0
2	AGS	B	508	3	26,33,33	0.61	0	26,52,52	0.88	1 (3%)

Mol	Type	Chain	Res	Link	Bond lengths			Bond angles		
					Counts	RMSZ	# Z > 2	Counts	RMSZ	# Z > 2
5	EDO	A	506	-	3,3,3	0.54	0	2,2,2	0.59	0
6	IMD	A	510	-	3,5,5	0.42	0	4,5,5	0.62	0
5	EDO	B	501	-	3,3,3	0.49	0	2,2,2	0.31	0
5	EDO	B	506	-	3,3,3	0.47	0	2,2,2	0.57	0
4	GCH	A	503	-	36,36,36	0.59	0	56,56,56	0.94	2 (3%)
5	EDO	B	505	-	3,3,3	0.47	0	2,2,2	0.48	0
2	AGS	A	501	3	26,33,33	0.85	1 (3%)	26,52,52	1.09	2 (7%)
4	GCH	B	510	-	36,36,36	0.59	0	56,56,56	0.94	2 (3%)
5	EDO	B	502	-	3,3,3	0.60	0	2,2,2	0.13	0
5	EDO	A	509	-	3,3,3	0.55	0	2,2,2	0.19	0
5	EDO	B	504	-	3,3,3	0.41	0	2,2,2	0.34	0
5	EDO	A	504	-	3,3,3	0.50	0	2,2,2	0.26	0
5	EDO	A	505	-	3,3,3	0.60	0	2,2,2	0.13	0
5	EDO	B	503	-	3,3,3	0.52	0	2,2,2	0.21	0
5	EDO	A	507	-	3,3,3	0.51	0	2,2,2	0.29	0
5	EDO	B	507	-	3,3,3	0.49	0	2,2,2	0.21	0

In the following table, the Chirals column lists the number of chiral outliers, the number of chiral centers analysed, the number of these observed in the model and the number defined in the Chemical Component Dictionary. Similar counts are reported in the Torsion and Rings columns. '-' means no outliers of that kind were identified.

Mol	Type	Chain	Res	Link	Chirals	Torsions	Rings
5	EDO	A	508	-	-	0/1/1/1	-
2	AGS	B	508	3	-	3/17/38/38	0/3/3/3
5	EDO	A	506	-	-	0/1/1/1	-
6	IMD	A	510	-	-	-	0/1/1/1
5	EDO	B	501	-	-	0/1/1/1	-
5	EDO	B	506	-	-	0/1/1/1	-
4	GCH	A	503	-	-	3/14/79/79	0/4/4/4
5	EDO	B	505	-	-	1/1/1/1	-
2	AGS	A	501	3	-	3/17/38/38	0/3/3/3
4	GCH	B	510	-	-	3/14/79/79	0/4/4/4
5	EDO	B	502	-	-	0/1/1/1	-
5	EDO	A	509	-	-	0/1/1/1	-
5	EDO	B	504	-	-	1/1/1/1	-
5	EDO	A	504	-	-	0/1/1/1	-
5	EDO	A	505	-	-	1/1/1/1	-
5	EDO	B	503	-	-	0/1/1/1	-
5	EDO	A	507	-	-	0/1/1/1	-
5	EDO	B	507	-	-	1/1/1/1	-

All (1) bond length outliers are listed below:

Mol	Chain	Res	Type	Atoms	Z	Observed(Å)	Ideal(Å)
2	A	501	AGS	PG-S1G	2.18	1.95	1.90

All (7) bond angle outliers are listed below:

Mol	Chain	Res	Type	Atoms	Z	Observed(°)	Ideal(°)
4	B	510	GCH	C7-C2-C1	2.66	114.26	111.19
2	A	501	AGS	C5-C6-N6	2.40	124.00	120.35
4	A	503	GCH	C6-C3-C4	-2.37	104.44	108.26
2	B	508	AGS	C5-C6-N6	2.36	123.93	120.35
2	A	501	AGS	O2A-PA-O1A	2.15	122.88	112.24
4	B	510	GCH	C7-C2-C3	-2.04	110.49	112.66
4	A	503	GCH	O-C-C1	-2.03	105.82	109.85

There are no chirality outliers.

All (16) torsion outliers are listed below:

Mol	Chain	Res	Type	Atoms
2	A	501	AGS	PB-O3B-PG-O2G
2	A	501	AGS	PB-O3B-PG-O3G
2	B	508	AGS	PB-O3B-PG-O2G
4	A	503	GCH	C19-C18-C20-C21
4	A	503	GCH	C17-C18-C20-C21
4	B	510	GCH	O5-C24-CA-N
4	B	510	GCH	O4-C24-CA-N
4	B	510	GCH	C19-C18-C20-C21
2	A	501	AGS	PA-O3A-PB-O2B
2	B	508	AGS	PA-O3A-PB-O2B
5	A	505	EDO	O1-C1-C2-O2
2	B	508	AGS	PB-O3B-PG-O3G
5	B	504	EDO	O1-C1-C2-O2
5	B	505	EDO	O1-C1-C2-O2
5	B	507	EDO	O1-C1-C2-O2
4	A	503	GCH	C24-CA-N-C22

There are no ring outliers.

5 monomers are involved in 7 short contacts:

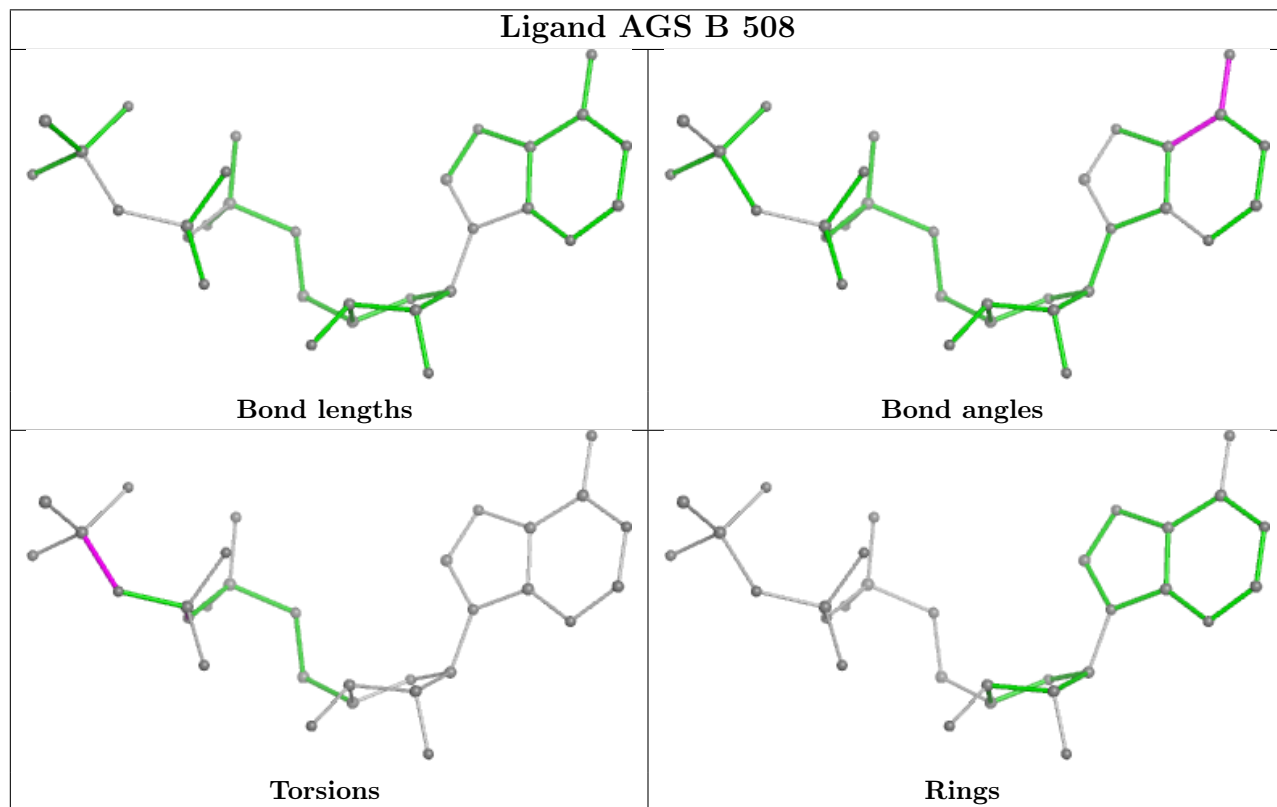
Mol	Chain	Res	Type	Clashes	Symm-Clashes
4	A	503	GCH	2	0
5	B	505	EDO	3	0

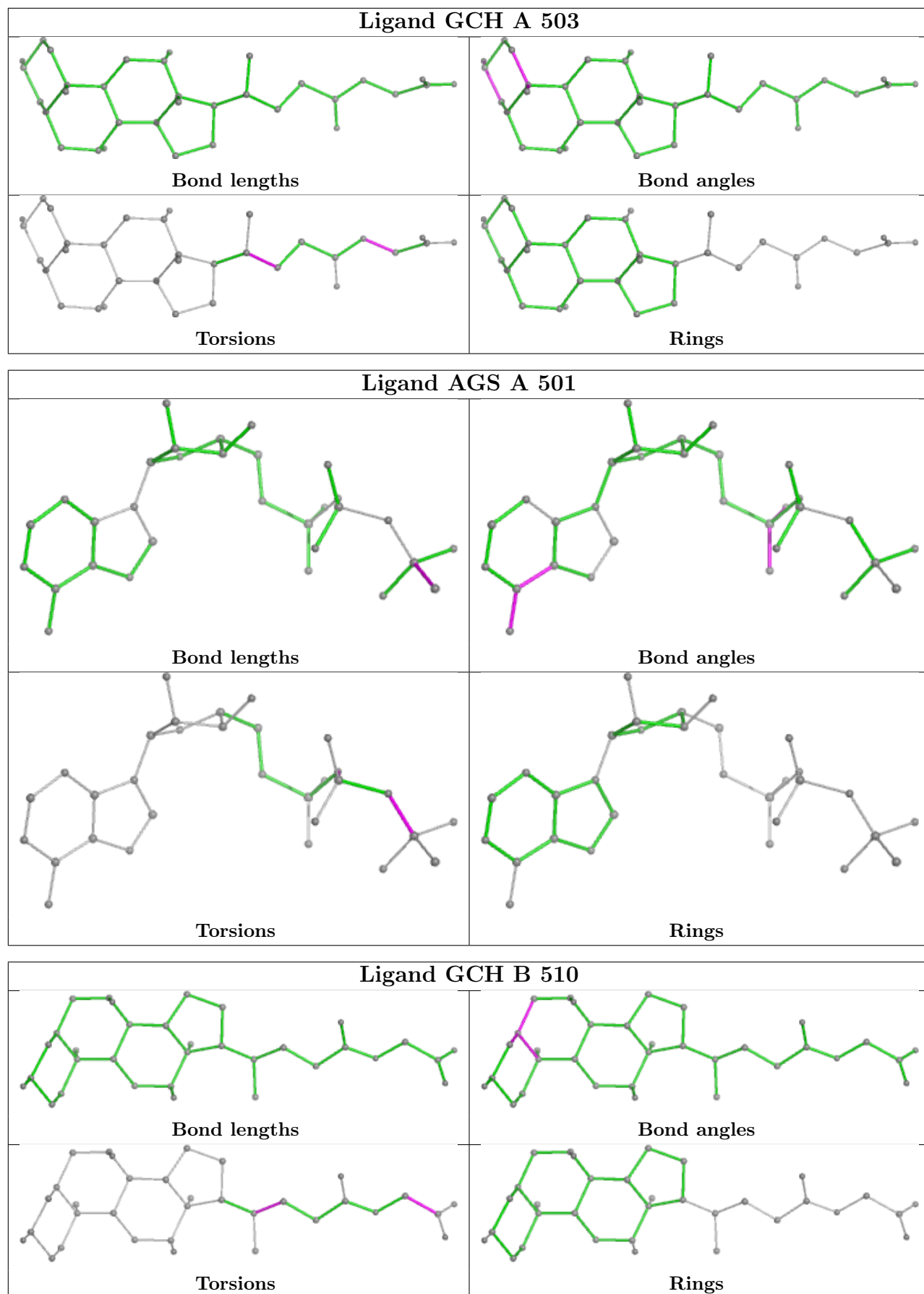
Continued on next page...

Continued from previous page...

Mol	Chain	Res	Type	Clashes	Symm-Clashes
2	A	501	AGS	1	0
4	B	510	GCH	1	0
5	B	507	EDO	1	0

The following is a two-dimensional graphical depiction of Mogul quality analysis of bond lengths, bond angles, torsion angles, and ring geometry for all instances of the Ligand of Interest. In addition, ligands with molecular weight > 250 and outliers as shown on the validation Tables will also be included. For torsion angles, if less than 5% of the Mogul distribution of torsion angles is within 10 degrees of the torsion angle in question, then that torsion angle is considered an outlier. Any bond that is central to one or more torsion angles identified as an outlier by Mogul will be highlighted in the graph. For rings, the root-mean-square deviation (RMSD) between the ring in question and similar rings identified by Mogul is calculated over all ring torsion angles. If the average RMSD is greater than 60 degrees and the minimal RMSD between the ring in question and any Mogul-identified rings is also greater than 60 degrees, then that ring is considered an outlier. The outliers are highlighted in purple. The color gray indicates Mogul did not find sufficient equivalents in the CSD to analyse the geometry.





5.7 Other polymers [i](#)

There are no such residues in this entry.

5.8 Polymer linkage issues [i](#)

There are no chain breaks in this entry.

6 Fit of model and data

6.1 Protein, DNA and RNA chains

In the following table, the column labelled ‘#RSRZ > 2’ contains the number (and percentage) of RSRZ outliers, followed by percent RSRZ outliers for the chain as percentile scores relative to all X-ray entries and entries of similar resolution. The OWAB column contains the minimum, median, 95th percentile and maximum values of the occupancy-weighted average B-factor per residue. The column labelled ‘Q < 0.9’ lists the number of (and percentage) of residues with an average occupancy less than 0.9.

Mol	Chain	Analysed	<RSRZ>	#RSRZ>2	OWAB(Å ²)	Q<0.9
1	A	267/277 (96%)	0.68	24 (8%) 17 16	27, 55, 104, 132	3 (1%)
1	B	249/277 (89%)	0.66	22 (8%) 17 17	22, 51, 116, 144	5 (2%)
All	All	516/554 (93%)	0.67	46 (8%) 17 17	22, 53, 106, 144	8 (1%)

All (46) RSRZ outliers are listed below:

Mol	Chain	Res	Type	RSRZ
1	A	193	VAL	7.8
1	A	178	LEU	5.6
1	B	325[A]	TYR	4.7
1	B	451[A]	ARG	4.6
1	B	212	PRO	4.5
1	B	211	LEU	4.3
1	B	413	VAL	4.3
1	B	206	VAL	4.3
1	A	179	LEU	4.0
1	B	208	VAL	3.9
1	B	217	PRO	3.5
1	B	205	PRO	3.4
1	B	213	ARG	3.4
1	B	343	PHE	3.3
1	A	244	ALA	3.2
1	A	180	ILE	3.1
1	A	243	LEU	3.1
1	A	452	ASN	3.1
1	B	216	LYS	3.0
1	A	177	ALA	2.9
1	B	215	LEU	2.9
1	A	338	CYS	2.6
1	A	288	LEU	2.6
1	A	307	LEU	2.6

Continued on next page...

Continued from previous page...

Mol	Chain	Res	Type	RSRZ
1	B	222	LEU	2.5
1	B	411	HIS	2.4
1	A	343	PHE	2.4
1	A	214	GLU	2.3
1	A	176	MET	2.2
1	A	302	ASN	2.2
1	A	208	VAL	2.2
1	A	218	LEU	2.2
1	B	210	ALA	2.2
1	A	192	GLY	2.2
1	A	215	LEU	2.2
1	B	218	LEU	2.2
1	B	233	PHE	2.1
1	A	304	LEU	2.1
1	B	362	ARG	2.1
1	A	415	GLN	2.1
1	B	301	ASN	2.1
1	A	249	THR	2.1
1	A	182	THR	2.1
1	A	321	ASP	2.0
1	B	214	GLU	2.0
1	B	209	SER	2.0

6.2 Non-standard residues in protein, DNA, RNA chains [\(i\)](#)

There are no non-standard protein/DNA/RNA residues in this entry.

6.3 Carbohydrates [\(i\)](#)

There are no monosaccharides in this entry.

6.4 Ligands [\(i\)](#)

In the following table, the Atoms column lists the number of modelled atoms in the group and the number defined in the chemical component dictionary. The B-factors column lists the minimum, median, 95th percentile and maximum values of B factors of atoms in the group. The column labelled 'Q< 0.9' lists the number of atoms with occupancy less than 0.9.

Mol	Type	Chain	Res	Atoms	RSCC	RSR	B-factors(Å ²)	Q<0.9
5	EDO	A	507	4/4	0.68	0.15	78,82,83,84	0

Continued on next page...

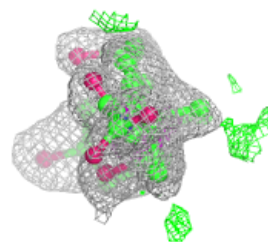
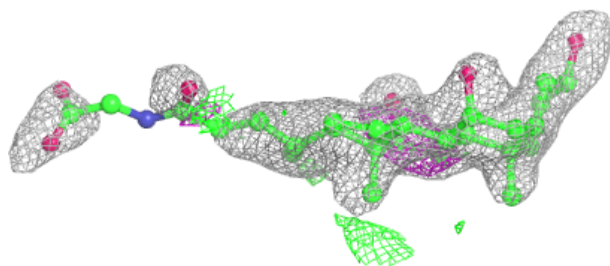
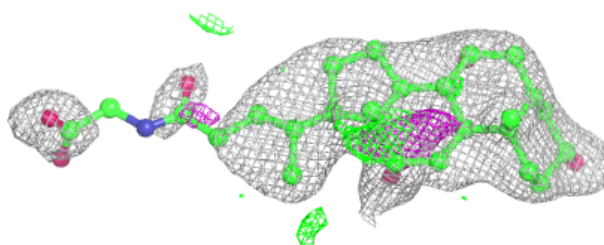
Continued from previous page...

Mol	Type	Chain	Res	Atoms	RSCC	RSR	B-factors(\AA^2)	Q<0.9
5	EDO	A	504	4/4	0.70	0.15	75,80,80,85	0
6	IMD	A	510	5/5	0.74	0.17	84,85,86,88	0
5	EDO	B	502	4/4	0.80	0.15	51,67,69,71	0
4	GCH	B	510	33/33	0.81	0.16	59,68,100,102	0
5	EDO	B	503	4/4	0.81	0.14	76,77,77,77	0
5	EDO	A	508	4/4	0.81	0.15	58,70,72,80	0
5	EDO	B	504	4/4	0.82	0.14	65,69,69,71	0
5	EDO	A	506	4/4	0.83	0.15	55,55,57,61	0
5	EDO	B	507	4/4	0.86	0.16	67,69,74,80	0
5	EDO	B	501	4/4	0.86	0.12	63,64,70,70	0
5	EDO	A	505	4/4	0.87	0.16	57,68,74,74	0
5	EDO	B	505	4/4	0.89	0.12	65,66,67,73	0
5	EDO	A	509	4/4	0.90	0.12	52,55,55,57	0
5	EDO	B	506	4/4	0.91	0.12	63,65,68,73	0
4	GCH	A	503	33/33	0.92	0.10	55,63,87,90	0
2	AGS	A	501	31/31	0.98	0.05	33,36,42,50	0
2	AGS	B	508	31/31	0.98	0.06	33,37,44,47	0
3	MG	A	502	1/1	0.99	0.04	36,36,36,36	0
3	MG	B	509	1/1	0.99	0.06	38,38,38,38	0

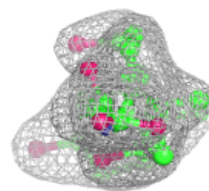
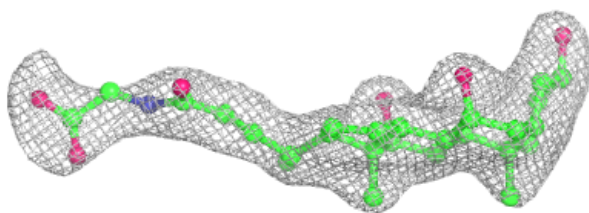
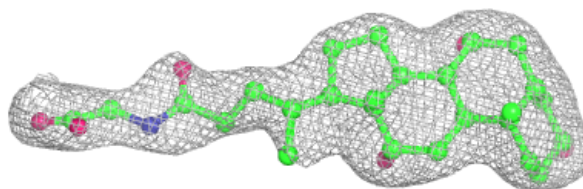
The following is a graphical depiction of the model fit to experimental electron density of all instances of the Ligand of Interest. In addition, ligands with molecular weight > 250 and outliers as shown on the geometry validation Tables will also be included. Each fit is shown from different orientation to approximate a three-dimensional view.

Electron density around GCH B 510:

$2mF_o-DF_c$ (at 0.7 rmsd) in gray
 mF_o-DF_c (at 3 rmsd) in purple (negative)
and green (positive)

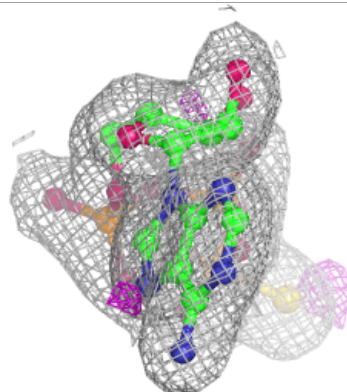
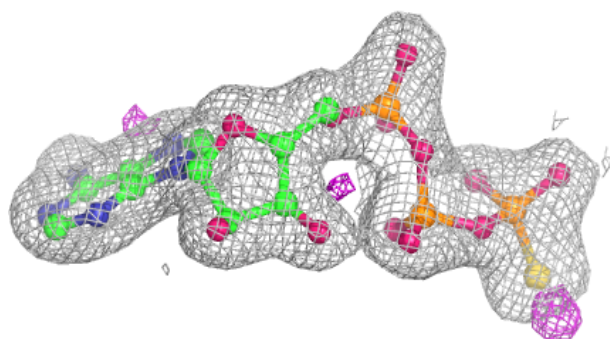
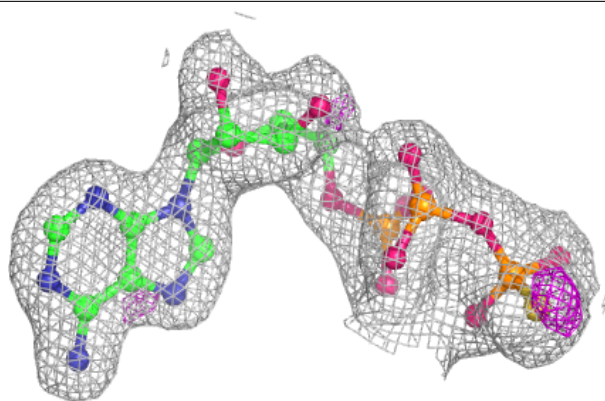
**Electron density around GCH A 503:**

$2mF_o-DF_c$ (at 0.7 rmsd) in gray
 mF_o-DF_c (at 3 rmsd) in purple (negative)
and green (positive)

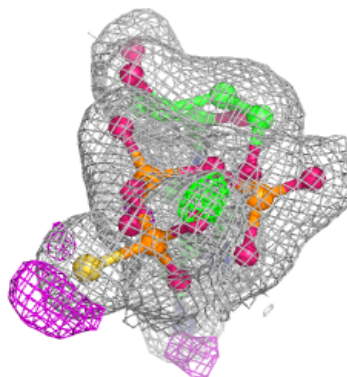
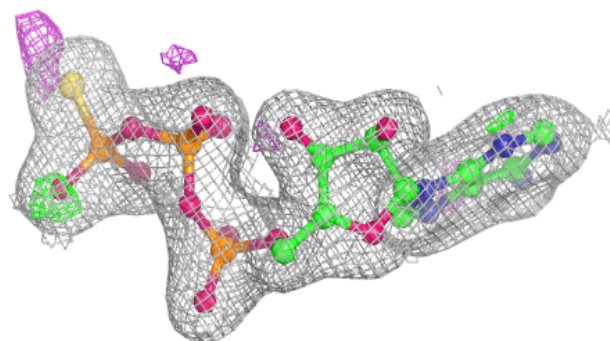
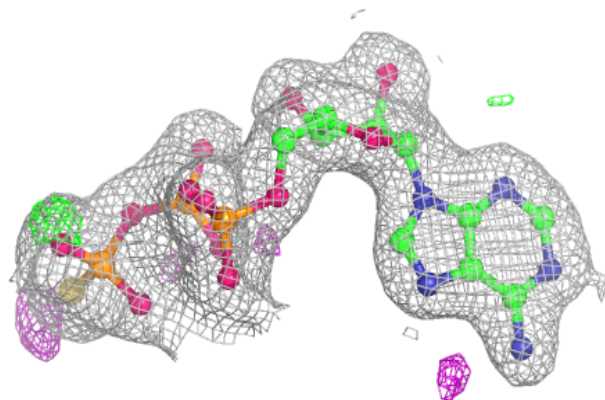


Electron density around AGS A 501:

$2mF_o-DF_c$ (at 0.7 rmsd) in gray
 mF_o-DF_c (at 3 rmsd) in purple (negative)
and green (positive)

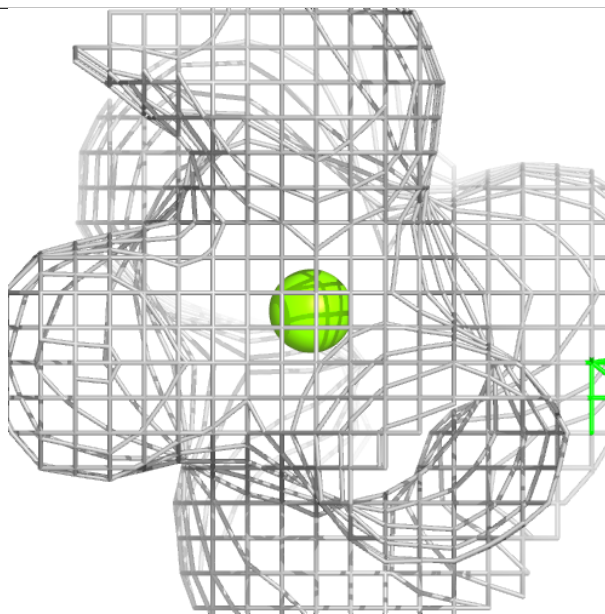
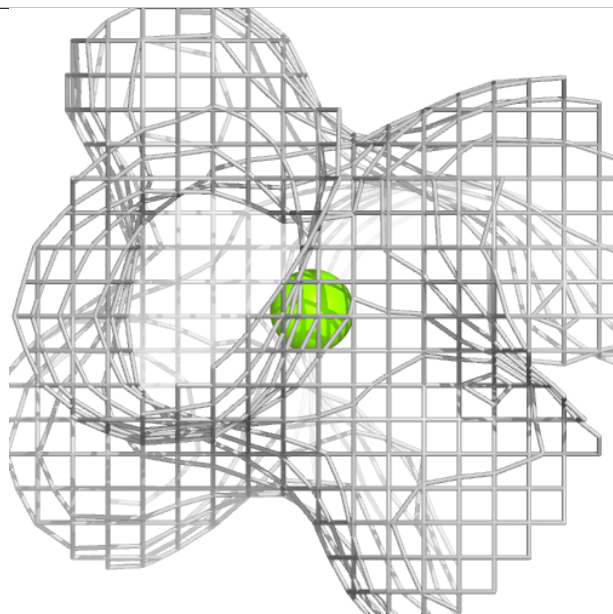
**Electron density around AGS B 508:**

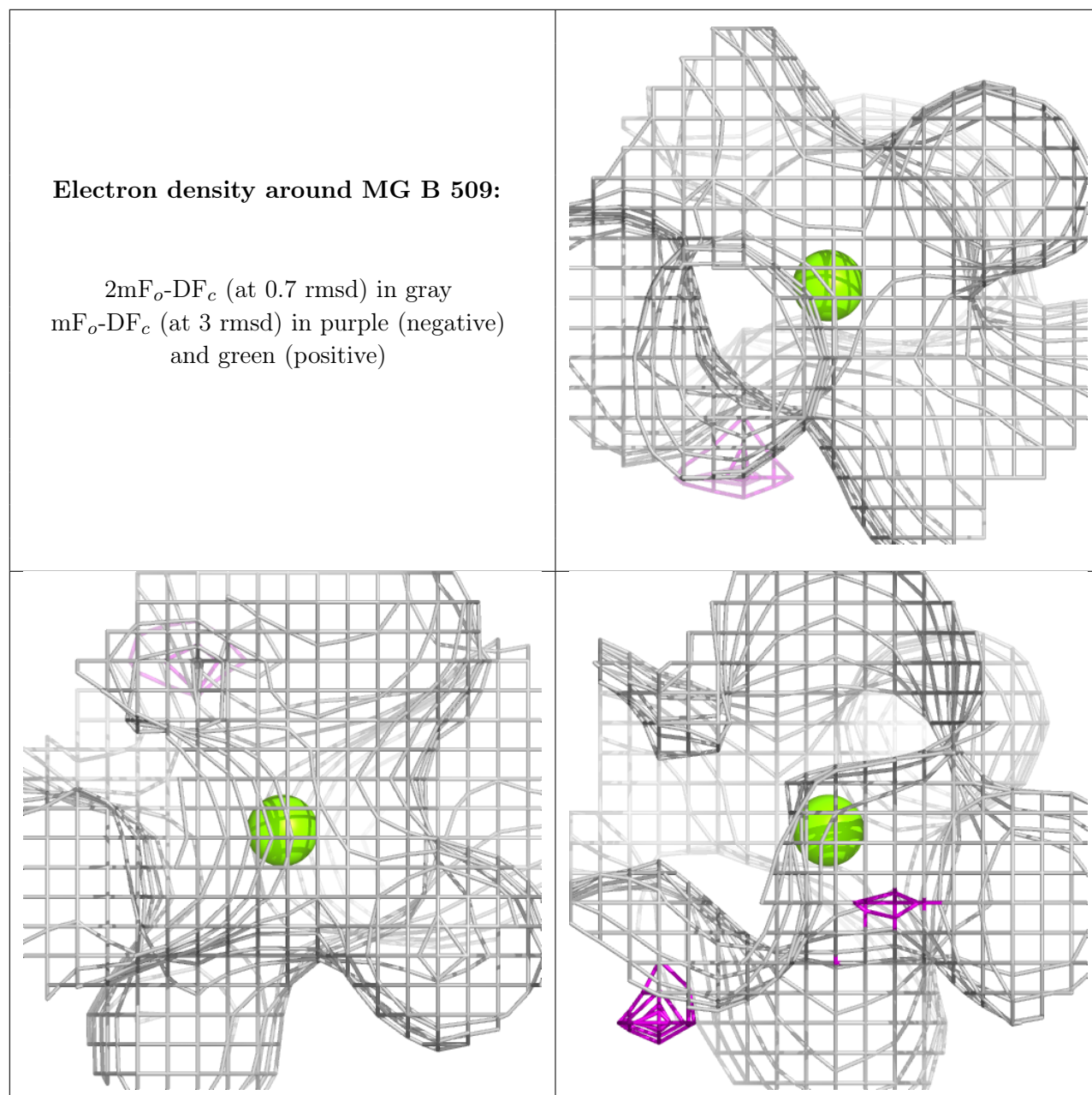
$2mF_o-DF_c$ (at 0.7 rmsd) in gray
 mF_o-DF_c (at 3 rmsd) in purple (negative)
and green (positive)



Electron density around MG A 502:

$2mF_o-DF_c$ (at 0.7 rmsd) in gray
 mF_o-DF_c (at 3 rmsd) in purple (negative)
and green (positive)





6.5 Other polymers [i](#)

There are no such residues in this entry.