



Full wwPDB X-ray Structure Validation Report ⓘ

Jul 31, 2023 – 09:59 PM EDT

PDB ID : 4ERK
Title : THE COMPLEX STRUCTURE OF THE MAP KINASE
ERK2/OLOMOUCINE
Authors : Wang, Z.; Canagarajah, B.; Boehm, J.C.; Cobb, M.H.; Young, P.R.; Abdel-
Meguid, S.; Adams, J.L.; Goldsmith, E.J.
Deposited on : 1998-07-09
Resolution : 2.20 Å(reported)

This is a Full wwPDB X-ray Structure Validation Report for a publicly released PDB entry.

We welcome your comments at validation@mail.wwpdb.org

A user guide is available at

<https://www.wwpdb.org/validation/2017/XrayValidationReportHelp>

with specific help available everywhere you see the ⓘ symbol.

The types of validation reports are described at

<http://www.wwpdb.org/validation/2017/FAQs#types>.

The following versions of software and data (see [references ⓘ](#)) were used in the production of this report:

MolProbity : 4.02b-467
Mogul : 1.8.5 (274361), CSD as541be (2020)
Xtrriage (Phenix) : **NOT EXECUTED**
EDS : **NOT EXECUTED**
buster-report : 1.1.7 (2018)
Percentile statistics : 20191225.v01 (using entries in the PDB archive December 25th 2019)
Ideal geometry (proteins) : Engh & Huber (2001)
Ideal geometry (DNA, RNA) : Parkinson et al. (1996)
Validation Pipeline (wwPDB-VP) : 2.34

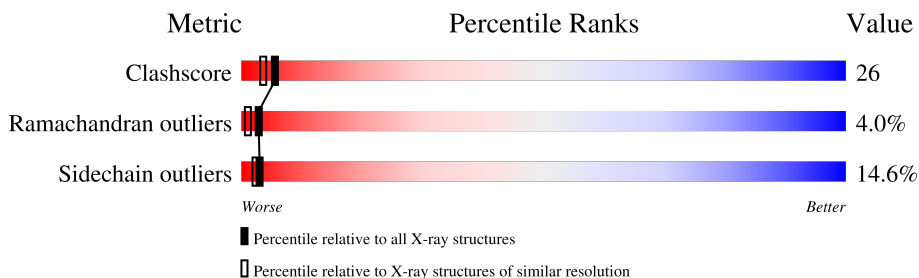
1 Overall quality at a glance

The following experimental techniques were used to determine the structure:

X-RAY DIFFRACTION

The reported resolution of this entry is 2.20 Å.

Percentile scores (ranging between 0-100) for global validation metrics of the entry are shown in the following graphic. The table shows the number of entries on which the scores are based.



Metric	Whole archive (#Entries)	Similar resolution (#Entries, resolution range(Å))
Clashscore	141614	5594 (2.20-2.20)
Ramachandran outliers	138981	5503 (2.20-2.20)
Sidechain outliers	138945	5504 (2.20-2.20)

The table below summarises the geometric issues observed across the polymeric chains and their fit to the electron density. The red, orange, yellow and green segments of the lower bar indicate the fraction of residues that contain outliers for ≥ 3 , 2, 1 and 0 types of geometric quality criteria respectively. A grey segment represents the fraction of residues that are not modelled. The numeric value for each fraction is indicated below the corresponding segment, with a dot representing fractions $\leq 5\%$.

Note EDS was not executed.

Mol	Chain	Length	Quality of chain
1	A	364	 46% 41% 8% . .

2 Entry composition [i](#)

There are 4 unique types of molecules in this entry. The entry contains 3005 atoms, of which 0 are hydrogens and 0 are deuteriums.

In the tables below, the ZeroOcc column contains the number of atoms modelled with zero occupancy, the AltConf column contains the number of residues with at least one atom in alternate conformation and the Trace column contains the number of residues modelled with at most 2 atoms.

- Molecule 1 is a protein called EXTRACELLULAR REGULATED KINASE 2.

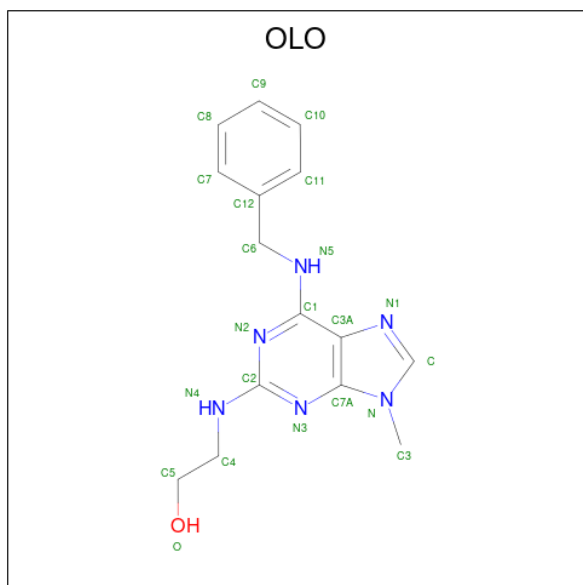
Mol	Chain	Residues	Atoms					ZeroOcc	AltConf	Trace
			Total	C	N	O	S			
1	A	350	2849	1829	487	518	15	0	0	0

- Molecule 2 is SULFATE ION (three-letter code: SO4) (formula: O₄S).



Mol	Chain	Residues	Atoms			ZeroOcc	AltConf
			Total	O	S		
2	A	1	5	4	1	0	0

- Molecule 3 is OLOMOUCINE (three-letter code: OLO) (formula: C₁₅H₁₈N₆O).



Mol	Chain	Residues	Atoms				ZeroOcc	AltConf
			Total	C	N	O		
3	A	1	22	15	6	1	0	0

- Molecule 4 is water.

Mol	Chain	Residues	Atoms		ZeroOcc	AltConf
			Total	O		
4	A	129	129	129	0	0

4 Data and refinement statistics

Xtrriage (Phenix) and EDS were not executed - this section is therefore incomplete.

Property	Value	Source
Space group	P 1 21 1	Depositor
Cell constants a, b, c, α , β , γ	48.87Å 70.26Å 59.97Å 90.00° 109.05° 90.00°	Depositor
Resolution (Å)	20.00 – 2.20	Depositor
% Data completeness (in resolution range)	85.0 (20.00-2.20)	Depositor
R_{merge}	(Not available)	Depositor
R_{sym}	0.03	Depositor
Refinement program	X-PLOR 3.8	Depositor
R, R_{free}	0.214 , 0.317	Depositor
Estimated twinning fraction	No twinning to report.	Xtrriage
Total number of atoms	3005	wwPDB-VP
Average B, all atoms (Å ²)	40.0	wwPDB-VP

5 Model quality [i](#)

5.1 Standard geometry [i](#)

Bond lengths and bond angles in the following residue types are not validated in this section: SO4, OLO

The Z score for a bond length (or angle) is the number of standard deviations the observed value is removed from the expected value. A bond length (or angle) with $|Z| > 5$ is considered an outlier worth inspection. RMSZ is the root-mean-square of all Z scores of the bond lengths (or angles).

Mol	Chain	Bond lengths		Bond angles	
		RMSZ	# Z >5	RMSZ	# Z >5
1	A	0.35	0/2918	0.56	0/3955

There are no bond length outliers.

There are no bond angle outliers.

There are no chirality outliers.

There are no planarity outliers.

5.2 Too-close contacts [i](#)

In the following table, the Non-H and H(model) columns list the number of non-hydrogen atoms and hydrogen atoms in the chain respectively. The H(added) column lists the number of hydrogen atoms added and optimized by MolProbity. The Clashes column lists the number of clashes within the asymmetric unit, whereas Symm-Clashes lists symmetry-related clashes.

Mol	Chain	Non-H	H(model)	H(added)	Clashes	Symm-Clashes
1	A	2849	0	2850	149	0
2	A	5	0	0	0	0
3	A	22	0	18	1	0
4	A	129	0	0	15	1
All	All	3005	0	2868	149	1

The all-atom clashscore is defined as the number of clashes found per 1000 atoms (including hydrogen atoms). The all-atom clashscore for this structure is 26.

All (149) close contacts within the same asymmetric unit are listed below, sorted by their clash magnitude.

Atom-1	Atom-2	Interatomic distance (Å)	Clash overlap (Å)
1:A:78:HIS:HD2	1:A:80:ASN:H	1.04	0.98
1:A:128:LEU:HB2	4:A:528:HOH:O	1.74	0.87
1:A:78:HIS:CD2	1:A:80:ASN:H	1.95	0.82
1:A:329:PHE:O	1:A:332:GLU:HG2	1.84	0.78
1:A:83:GLY:O	1:A:103:GLN:HG2	1.84	0.78
1:A:348:GLU:HG2	4:A:469:HOH:O	1.85	0.77
1:A:340:LYS:HD3	1:A:344:LEU:HD21	1.67	0.76
1:A:18:ASP:O	1:A:19:VAL:HG13	1.87	0.75
1:A:67:LEU:HD22	1:A:71:LYS:HD2	1.70	0.74
1:A:89:ARG:NH2	1:A:353:GLN:HG3	2.02	0.73
1:A:74:LEU:HD13	1:A:84:ILE:HD12	1.71	0.73
1:A:87:ILE:HD13	1:A:349:THR:HG22	1.70	0.72
1:A:65:ARG:NH1	1:A:168:LEU:HD23	2.04	0.71
1:A:336:LEU:HD22	1:A:337:PRO:HD2	1.73	0.70
1:A:259:ARG:HB2	1:A:259:ARG:HH11	1.57	0.70
1:A:64:GLN:O	1:A:68:ARG:HG2	1.94	0.68
1:A:332:GLU:O	1:A:333:LEU:HB2	1.93	0.68
1:A:295:ASN:ND2	1:A:297:HIS:H	1.92	0.67
1:A:340:LYS:HD3	1:A:344:LEU:CD2	2.25	0.67
1:A:146:ARG:HH21	1:A:170:ARG:NH1	1.94	0.66
1:A:189:ARG:HD3	1:A:230:HIS:O	1.96	0.66
1:A:153:LEU:HD11	1:A:215:ILE:HD13	1.78	0.65
1:A:128:LEU:HD13	1:A:216:LEU:HG	1.79	0.65
1:A:196:ILE:HD11	1:A:207:ILE:HD11	1.79	0.65
1:A:253:ILE:O	1:A:259:ARG:NH1	2.30	0.65
1:A:113:LEU:HD21	1:A:119:LEU:CD1	2.27	0.64
1:A:230:HIS:CE1	1:A:233:ASP:HB2	2.33	0.64
1:A:37:VAL:HG22	1:A:52:LYS:HG2	1.79	0.64
1:A:171:VAL:HG21	1:A:328:LYS:HA	1.79	0.64
1:A:295:ASN:HD22	1:A:295:ASN:C	2.00	0.63
1:A:35:GLY:HA2	1:A:53:LYS:O	1.99	0.62
1:A:259:ARG:HH11	1:A:259:ARG:CB	2.12	0.62
1:A:68:ARG:HH22	1:A:170:ARG:CZ	2.14	0.61
1:A:113:LEU:HD21	1:A:119:LEU:HD11	1.82	0.61
1:A:57:PHE:HA	1:A:63:CYS:SG	2.41	0.60
1:A:19:VAL:HB	1:A:23:TYR:HB2	1.84	0.60
1:A:284:ALA:HB2	1:A:310:TYR:CE1	2.37	0.60
1:A:227:PRO:HD2	1:A:237:HIS:CD2	2.37	0.60
1:A:178:HIS:HE1	4:A:480:HOH:O	1.85	0.59
1:A:300:ILE:HG12	1:A:304:GLN:HB3	1.83	0.59
1:A:23:TYR:HA	1:A:41:TYR:O	2.03	0.58
1:A:295:ASN:HD22	1:A:297:HIS:H	1.52	0.57

Continued on next page...

Continued from previous page...

Atom-1	Atom-2	Interatomic distance (Å)	Clash overlap (Å)
1:A:88:ILE:HB	1:A:100:TYR:HB2	1.86	0.56
1:A:61:THR:O	1:A:64:GLN:HG3	2.05	0.56
1:A:300:ILE:CG1	1:A:304:GLN:HB3	2.35	0.56
1:A:184:GLU:HG2	4:A:521:HOH:O	2.05	0.56
1:A:29:ILE:HG22	1:A:29:ILE:O	2.05	0.55
1:A:162:LYS:HE3	4:A:444:HOH:O	2.07	0.55
1:A:87:ILE:HG21	1:A:349:THR:CG2	2.37	0.55
1:A:129:TYR:HB2	1:A:311:LEU:HD22	1.88	0.55
1:A:295:ASN:HD22	1:A:296:PRO:N	2.05	0.54
1:A:78:HIS:HD2	1:A:80:ASN:N	1.88	0.54
1:A:29:ILE:HG12	1:A:39:SER:H	1.73	0.54
1:A:313:GLN:HG2	4:A:430:HOH:O	2.08	0.54
1:A:108:THR:OG1	1:A:109:ASP:N	2.40	0.53
1:A:185:TYR:CE2	1:A:187:ALA:HB3	2.45	0.52
1:A:57:PHE:O	1:A:338:LYS:HD2	2.10	0.52
1:A:127:PHE:O	1:A:131:ILE:HG13	2.09	0.52
1:A:146:ARG:NH2	1:A:170:ARG:NH1	2.58	0.51
1:A:227:PRO:HD2	1:A:237:HIS:HD2	1.76	0.51
1:A:121:ASN:ND2	4:A:440:HOH:O	2.44	0.50
1:A:68:ARG:NH2	1:A:170:ARG:CZ	2.75	0.50
1:A:86:ASP:HA	1:A:352:PHE:CE2	2.46	0.50
1:A:67:LEU:HD22	1:A:71:LYS:CD	2.41	0.50
1:A:67:LEU:HD22	1:A:71:LYS:HG3	1.94	0.50
1:A:29:ILE:HD11	1:A:39:SER:OG	2.11	0.50
1:A:17:PHE:CE2	1:A:53:LYS:HB2	2.47	0.49
1:A:162:LYS:HD2	4:A:444:HOH:O	2.11	0.49
1:A:246:SER:HB2	4:A:505:HOH:O	2.11	0.49
1:A:10:GLU:OE1	1:A:18:ASP:HA	2.12	0.49
1:A:27:SER:HB2	1:A:48:ARG:HH22	1.78	0.49
1:A:113:LEU:HD23	1:A:114:LEU:N	2.28	0.49
1:A:146:ARG:HH21	1:A:170:ARG:HH11	1.61	0.49
1:A:31:GLU:HB3	1:A:32:GLY:H	1.50	0.48
1:A:54:ILE:HB	1:A:99:VAL:HG22	1.94	0.48
1:A:89:ARG:CZ	1:A:353:GLN:HG3	2.42	0.48
1:A:104:ASP:HA	4:A:526:HOH:O	2.13	0.48
1:A:86:ASP:HA	1:A:352:PHE:CD2	2.49	0.48
1:A:247:GLN:HB3	4:A:481:HOH:O	2.14	0.48
1:A:315:TYR:CZ	1:A:317:PRO:HG3	2.49	0.48
1:A:109:ASP:OD1	1:A:109:ASP:C	2.52	0.48
1:A:46:LYS:N	1:A:46:LYS:HD2	2.28	0.47
1:A:136:LYS:O	1:A:140:SER:HB3	2.15	0.47

Continued on next page...

Continued from previous page...

Atom-1	Atom-2	Interatomic distance (Å)	Clash overlap (Å)
1:A:196:ILE:CD1	1:A:207:ILE:HD11	2.44	0.47
1:A:182:LEU:HD21	1:A:232:LEU:HD13	1.95	0.47
1:A:19:VAL:CB	1:A:23:TYR:HB2	2.45	0.47
1:A:272:PRO:HB2	1:A:275:ARG:HB3	1.97	0.47
1:A:87:ILE:HA	1:A:100:TYR:O	2.14	0.46
1:A:204:THR:HG22	1:A:206:SER:H	1.80	0.46
1:A:86:ASP:HB3	1:A:102:VAL:HG21	1.98	0.46
1:A:86:ASP:HB3	1:A:102:VAL:CG2	2.45	0.46
1:A:107:GLU:HA	1:A:107:GLU:OE1	2.16	0.46
1:A:279:ASN:H	1:A:279:ASN:ND2	2.13	0.46
1:A:34:TYR:CG	1:A:34:TYR:O	2.69	0.46
1:A:110:LEU:HD12	1:A:153:LEU:HD12	1.99	0.45
1:A:196:ILE:HD11	1:A:207:ILE:CD1	2.46	0.45
1:A:313:GLN:NE2	4:A:435:HOH:O	2.50	0.45
1:A:29:ILE:HG12	1:A:39:SER:N	2.31	0.45
1:A:337:PRO:O	1:A:341:LEU:HG	2.17	0.44
1:A:335:ASP:N	1:A:335:ASP:OD1	2.49	0.44
1:A:28:TYR:O	1:A:29:ILE:HD13	2.18	0.44
1:A:96:MET:HE3	1:A:342:LYS:HE2	1.99	0.44
1:A:283:LYS:HD3	1:A:309:PRO:HB2	1.98	0.44
1:A:78:HIS:HB3	1:A:81:ILE:HD12	2.00	0.44
1:A:324:GLU:H	1:A:324:GLU:CD	2.21	0.44
1:A:120:SER:O	1:A:123:HIS:HB2	2.18	0.44
1:A:54:ILE:HB	1:A:99:VAL:CG2	2.48	0.43
1:A:328:LYS:NZ	1:A:328:LYS:HB2	2.33	0.43
1:A:68:ARG:HH22	1:A:170:ARG:NH1	2.15	0.43
1:A:189:ARG:NH1	1:A:229:LYS:O	2.52	0.43
1:A:302:VAL:HG13	1:A:303:GLU:N	2.33	0.43
1:A:29:ILE:HB	1:A:37:VAL:HG12	2.00	0.43
1:A:74:LEU:HD23	1:A:351:ARG:NH2	2.33	0.43
1:A:74:LEU:CD1	1:A:84:ILE:HB	2.49	0.43
1:A:82:ILE:HG13	1:A:83:GLY:N	2.34	0.43
1:A:336:LEU:CD2	1:A:337:PRO:HD2	2.45	0.43
1:A:226:PHE:CE1	1:A:238:ILE:HA	2.53	0.43
1:A:165:ASP:HA	4:A:522:HOH:O	2.18	0.43
1:A:51:ILE:HD13	1:A:102:VAL:HG22	2.01	0.42
1:A:68:ARG:NH2	1:A:170:ARG:NH1	2.68	0.42
1:A:158:THR:O	1:A:159:CYS:HB2	2.18	0.42
1:A:22:ARG:NH2	1:A:42:ASP:OD2	2.52	0.42
1:A:42:ASP:O	1:A:46:LYS:N	2.48	0.42
1:A:90:ALA:HB1	1:A:91:PRO:HD2	2.00	0.42

Continued on next page...

Continued from previous page...

Atom-1	Atom-2	Interatomic distance (Å)	Clash overlap (Å)
1:A:189:ARG:HG2	1:A:234:GLN:OE1	2.19	0.42
1:A:198:LEU:CD1	1:A:262:LEU:HD21	2.49	0.42
1:A:114:LEU:HD23	1:A:114:LEU:HA	1.90	0.42
1:A:29:ILE:O	1:A:29:ILE:CG2	2.67	0.42
1:A:329:PHE:O	1:A:332:GLU:CG	2.63	0.41
1:A:79:GLU:HG3	4:A:503:HOH:O	2.21	0.41
1:A:53:LYS:HD2	1:A:100:TYR:CE2	2.55	0.41
1:A:72:ILE:HD11	1:A:329:PHE:HZ	1.85	0.41
1:A:73:LEU:HD23	1:A:73:LEU:HA	1.89	0.41
1:A:223:ARG:HA	1:A:224:PRO:HD3	1.90	0.41
1:A:75:ARG:HB3	1:A:327:PHE:CE2	2.55	0.41
1:A:17:PHE:CE1	1:A:26:LEU:HD11	2.55	0.41
1:A:92:THR:OG1	1:A:95:GLN:HG3	2.21	0.41
1:A:199:ASN:ND2	4:A:480:HOH:O	2.51	0.41
1:A:24:THR:HB	1:A:25:ASN:H	1.80	0.41
1:A:332:GLU:O	1:A:333:LEU:CB	2.64	0.41
1:A:10:GLU:N	1:A:10:GLU:OE2	2.54	0.40
1:A:29:ILE:HG23	3:A:800:OLO:H11	2.02	0.40
1:A:225:ILE:HG23	1:A:226:PHE:CD2	2.56	0.40
1:A:254:ILE:O	1:A:254:ILE:HG13	2.20	0.40
1:A:54:ILE:HD12	1:A:101:ILE:CD1	2.51	0.40
1:A:23:TYR:HE2	1:A:88:ILE:HD11	1.86	0.40
1:A:259:ARG:HH11	1:A:259:ARG:CG	2.35	0.40
1:A:67:LEU:HD22	1:A:71:LYS:CG	2.51	0.40
1:A:170:ARG:HG2	1:A:203:TYR:HE1	1.86	0.40

All (1) symmetry-related close contacts are listed below. The label for Atom-2 includes the symmetry operator and encoded unit-cell translations to be applied.

Atom-1	Atom-2	Interatomic distance (Å)	Clash overlap (Å)
4:A:470:HOH:O	4:A:497:HOH:O[2_647]	1.53	0.67

5.3 Torsion angles [i](#)

5.3.1 Protein backbone [i](#)

In the following table, the Percentiles column shows the percent Ramachandran outliers of the chain as a percentile score with respect to all X-ray entries followed by that with respect to entries of similar resolution.

The Analysed column shows the number of residues for which the backbone conformation was analysed, and the total number of residues.

Mol	Chain	Analysed	Favoured	Allowed	Outliers	Percentiles
1	A	348/364 (96%)	299 (86%)	35 (10%)	14 (4%)	3 1

All (14) Ramachandran outliers are listed below:

Mol	Chain	Res	Type
1	A	19	VAL
1	A	332	GLU
1	A	333	LEU
1	A	354	PRO
1	A	199	ASN
1	A	15	GLN
1	A	330	ASP
1	A	41	TYR
1	A	31	GLU
1	A	40	ALA
1	A	43	ASN
1	A	278	PRO
1	A	33	ALA
1	A	56	PRO

5.3.2 Protein sidechains [i](#)

In the following table, the Percentiles column shows the percent sidechain outliers of the chain as a percentile score with respect to all X-ray entries followed by that with respect to entries of similar resolution.

The Analysed column shows the number of residues for which the sidechain conformation was analysed, and the total number of residues.

Mol	Chain	Analysed	Rotameric	Outliers	Percentiles
1	A	314/324 (97%)	268 (85%)	46 (15%)	3 2

All (46) residues with a non-rotameric sidechain are listed below:

Mol	Chain	Res	Type
1	A	11	MET
1	A	13	ARG
1	A	19	VAL
1	A	24	THR
1	A	27	SER

Continued on next page...

Continued from previous page...

Mol	Chain	Res	Type
1	A	45	ASN
1	A	51	ILE
1	A	55	SER
1	A	58	GLU
1	A	59	HIS
1	A	64	GLN
1	A	65	ARG
1	A	67	LEU
1	A	68	ARG
1	A	69	GLU
1	A	71	LYS
1	A	74	LEU
1	A	75	ARG
1	A	89	ARG
1	A	98	ASP
1	A	110	LEU
1	A	115	LYS
1	A	118	HIS
1	A	155	LEU
1	A	158	THR
1	A	165	ASP
1	A	216	LEU
1	A	223	ARG
1	A	257	LYS
1	A	259	ARG
1	A	260	ASN
1	A	262	LEU
1	A	265	LEU
1	A	268	LYS
1	A	270	LYS
1	A	275	ARG
1	A	282	SER
1	A	295	ASN
1	A	327	PHE
1	A	328	LYS
1	A	332	GLU
1	A	333	LEU
1	A	335	ASP
1	A	336	LEU
1	A	343	GLU
1	A	344	LEU

Sometimes sidechains can be flipped to improve hydrogen bonding and reduce clashes. All (15)

such sidechains are listed below:

Mol	Chain	Res	Type
1	A	43	ASN
1	A	45	ASN
1	A	78	HIS
1	A	85	ASN
1	A	118	HIS
1	A	121	ASN
1	A	142	ASN
1	A	152	ASN
1	A	178	HIS
1	A	237	HIS
1	A	251	ASN
1	A	260	ASN
1	A	267	HIS
1	A	279	ASN
1	A	295	ASN

5.3.3 RNA [i](#)

There are no RNA molecules in this entry.

5.4 Non-standard residues in protein, DNA, RNA chains [i](#)

There are no non-standard protein/DNA/RNA residues in this entry.

5.5 Carbohydrates [i](#)

There are no monosaccharides in this entry.

5.6 Ligand geometry [i](#)

2 ligands are modelled in this entry.

In the following table, the Counts columns list the number of bonds (or angles) for which Mogul statistics could be retrieved, the number of bonds (or angles) that are observed in the model and the number of bonds (or angles) that are defined in the Chemical Component Dictionary. The Link column lists molecule types, if any, to which the group is linked. The Z score for a bond length (or angle) is the number of standard deviations the observed value is removed from the expected value. A bond length (or angle) with $|Z| > 2$ is considered an outlier worth inspection. RMSZ is the root-mean-square of all Z scores of the bond lengths (or angles).

Mol	Type	Chain	Res	Link	Bond lengths			Bond angles		
					Counts	RMSZ	# Z > 2	Counts	RMSZ	# Z > 2
3	OLO	A	800	-	21,24,24	3.16	8 (38%)	22,32,32	2.52	7 (31%)
2	SO4	A	990	-	4,4,4	0.71	0	6,6,6	0.61	0

In the following table, the Chirals column lists the number of chiral outliers, the number of chiral centers analysed, the number of these observed in the model and the number defined in the Chemical Component Dictionary. Similar counts are reported in the Torsion and Rings columns. '-' means no outliers of that kind were identified.

Mol	Type	Chain	Res	Link	Chirals	Torsions	Rings
3	OLO	A	800	-	-	5/9/9/9	0/3/3/3

All (8) bond length outliers are listed below:

Mol	Chain	Res	Type	Atoms	Z	Observed(Å)	Ideal(Å)
3	A	800	OLO	C2-N4	7.33	1.45	1.34
3	A	800	OLO	C1-N2	6.88	1.42	1.32
3	A	800	OLO	C1-N5	6.47	1.46	1.34
3	A	800	OLO	C7A-N3	4.98	1.43	1.35
3	A	800	OLO	C7-C12	2.45	1.44	1.38
3	A	800	OLO	C-N1	2.43	1.39	1.34
3	A	800	OLO	C2-N2	2.37	1.41	1.34
3	A	800	OLO	C2-N3	2.23	1.41	1.34

All (7) bond angle outliers are listed below:

Mol	Chain	Res	Type	Atoms	Z	Observed(°)	Ideal(°)
3	A	800	OLO	C6-N5-C1	7.21	132.72	123.11
3	A	800	OLO	N3-C2-N2	-4.16	119.64	126.23
3	A	800	OLO	C2-N3-C7A	3.91	119.72	115.28
3	A	800	OLO	C3A-C1-N2	-3.58	117.84	120.81
3	A	800	OLO	C3-N-C7A	3.54	131.82	124.18
3	A	800	OLO	C4-N4-C2	2.81	128.61	123.75
3	A	800	OLO	C2-N2-C1	2.75	122.69	116.39

There are no chirality outliers.

All (5) torsion outliers are listed below:

Mol	Chain	Res	Type	Atoms
3	A	800	OLO	C12-C6-N5-C1
3	A	800	OLO	C5-C4-N4-C2
3	A	800	OLO	N4-C4-C5-O

Continued on next page...

Continued from previous page...

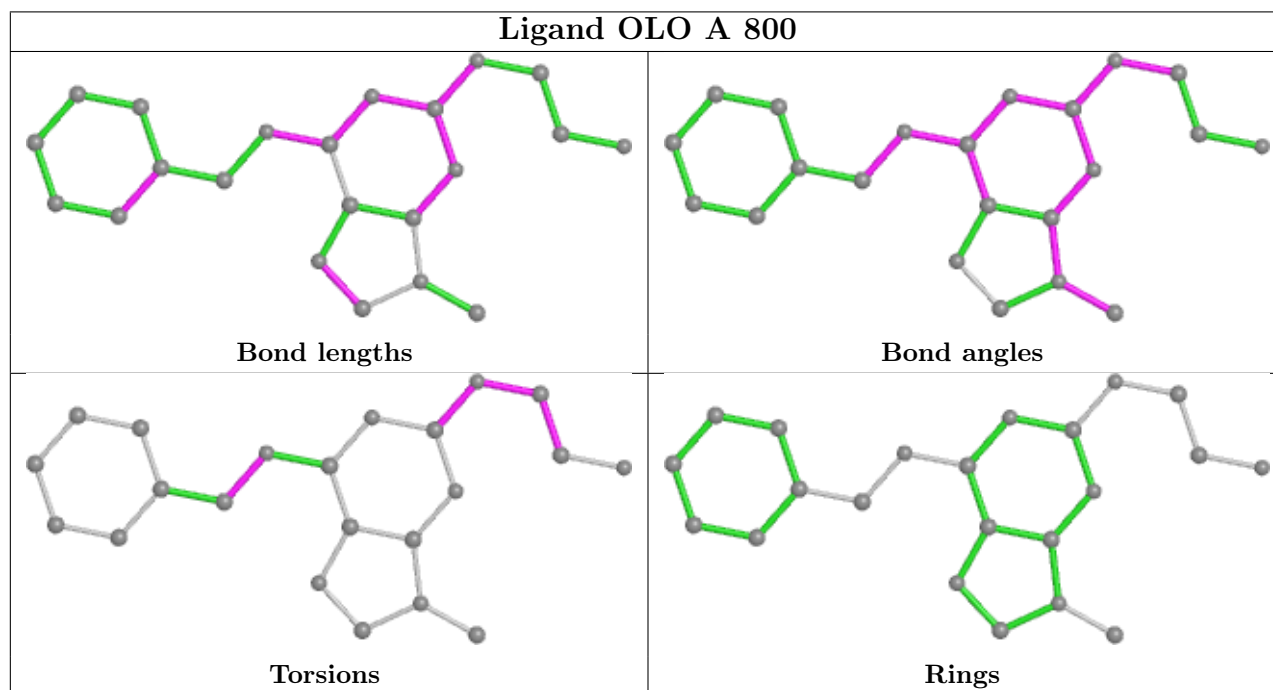
Mol	Chain	Res	Type	Atoms
3	A	800	OLO	N2-C2-N4-C4
3	A	800	OLO	N3-C2-N4-C4

There are no ring outliers.

1 monomer is involved in 1 short contact:

Mol	Chain	Res	Type	Clashes	Symm-Clashes
3	A	800	OLO	1	0

The following is a two-dimensional graphical depiction of Mogul quality analysis of bond lengths, bond angles, torsion angles, and ring geometry for all instances of the Ligand of Interest. In addition, ligands with molecular weight > 250 and outliers as shown on the validation Tables will also be included. For torsion angles, if less than 5% of the Mogul distribution of torsion angles is within 10 degrees of the torsion angle in question, then that torsion angle is considered an outlier. Any bond that is central to one or more torsion angles identified as an outlier by Mogul will be highlighted in the graph. For rings, the root-mean-square deviation (RMSD) between the ring in question and similar rings identified by Mogul is calculated over all ring torsion angles. If the average RMSD is greater than 60 degrees and the minimal RMSD between the ring in question and any Mogul-identified rings is also greater than 60 degrees, then that ring is considered an outlier. The outliers are highlighted in purple. The color gray indicates Mogul did not find sufficient equivalents in the CSD to analyse the geometry.



5.7 Other polymers [i](#)

There are no such residues in this entry.

5.8 Polymer linkage issues [i](#)

There are no chain breaks in this entry.

6 Fit of model and data

6.1 Protein, DNA and RNA chains

EDS was not executed - this section is therefore empty.

6.2 Non-standard residues in protein, DNA, RNA chains

EDS was not executed - this section is therefore empty.

6.3 Carbohydrates

EDS was not executed - this section is therefore empty.

6.4 Ligands

EDS was not executed - this section is therefore empty.

6.5 Other polymers

EDS was not executed - this section is therefore empty.