



Full wwPDB X-ray Structure Validation Report ⓘ

May 29, 2024 – 12:30 PM EDT

PDB ID : 1ESB
Title : DIRECT STRUCTURE OBSERVATION OF AN ACYL-ENZYME INTERMEDIATE IN THE HYDROLYSIS OF AN ESTER SUBSTRATE BY ELASTASE
Authors : Ding, X.; Rasmussen, B.; Petsko, G.A.; Ringe, D.
Deposited on : 1994-02-04
Resolution : 2.30 Å(reported)

This is a Full wwPDB X-ray Structure Validation Report for a publicly released PDB entry.

We welcome your comments at validation@mail.wwpdb.org

A user guide is available at

<https://www.wwpdb.org/validation/2017/XrayValidationReportHelp>

with specific help available everywhere you see the ⓘ symbol.

The types of validation reports are described at

<http://www.wwpdb.org/validation/2017/FAQs#types>.

The following versions of software and data (see [references ⓘ](#)) were used in the production of this report:

MolProbity : 4.02b-467
Mogul : 1.8.5 (274361), CSD as541be (2020)
Xtrriage (Phenix) : **NOT EXECUTED**
EDS : **NOT EXECUTED**
Percentile statistics : 20191225.v01 (using entries in the PDB archive December 25th 2019)
Ideal geometry (proteins) : Engh & Huber (2001)
Ideal geometry (DNA, RNA) : Parkinson et al. (1996)
Validation Pipeline (wwPDB-VP) : 2.36.2

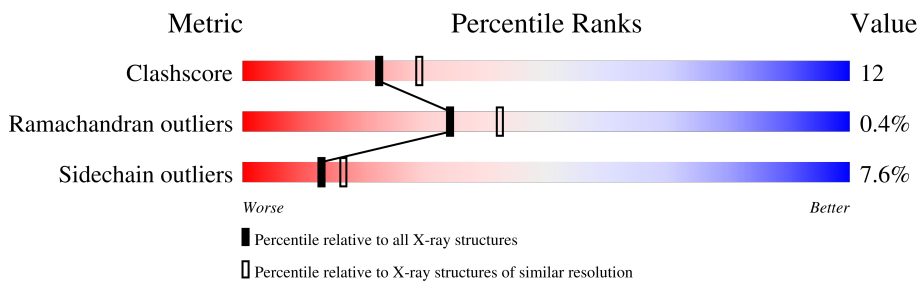
1 Overall quality at a glance

The following experimental techniques were used to determine the structure:

X-RAY DIFFRACTION

The reported resolution of this entry is 2.30 Å.

Percentile scores (ranging between 0-100) for global validation metrics of the entry are shown in the following graphic. The table shows the number of entries on which the scores are based.



Metric	Whole archive (#Entries)	Similar resolution (#Entries, resolution range(Å))
Clashscore	141614	5643 (2.30-2.30)
Ramachandran outliers	138981	5575 (2.30-2.30)
Sidechain outliers	138945	5575 (2.30-2.30)

The table below summarises the geometric issues observed across the polymeric chains and their fit to the electron density. The red, orange, yellow and green segments of the lower bar indicate the fraction of residues that contain outliers for ≥ 3 , 2, 1 and 0 types of geometric quality criteria respectively. A grey segment represents the fraction of residues that are not modelled. The numeric value for each fraction is indicated below the corresponding segment, with a dot representing fractions $\leq 5\%$.

Note EDS was not executed.

Mol	Chain	Length	Quality of chain
1	A	240	

The following table lists non-polymeric compounds, carbohydrate monomers and non-standard residues in protein, DNA, RNA chains that are outliers for geometric or electron-density-fit criteria:

Mol	Type	Chain	Res	Chirality	Geometry	Clashes	Electron density
2	BBL	A	256	-	-	X	-

2 Entry composition [i](#)

There are 5 unique types of molecules in this entry. The entry contains 1968 atoms, of which 0 are hydrogens and 0 are deuteriums.

In the tables below, the ZeroOcc column contains the number of atoms modelled with zero occupancy, the AltConf column contains the number of residues with at least one atom in alternate conformation and the Trace column contains the number of residues modelled with at most 2 atoms.

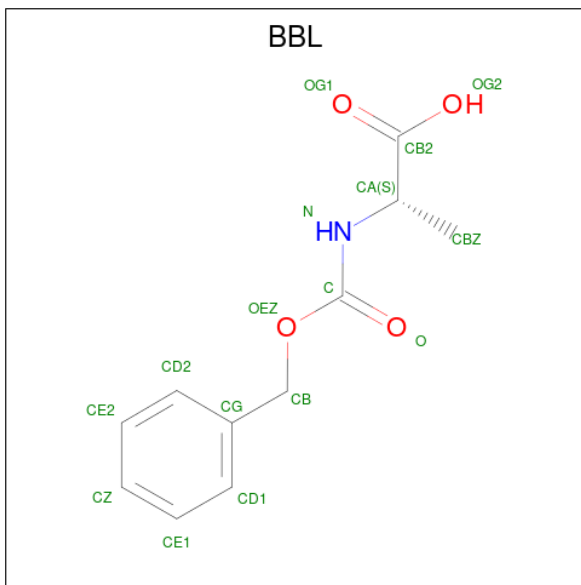
- Molecule 1 is a protein called PORCINE PANCREATIC ELASTASE.

Mol	Chain	Residues	Atoms					ZeroOcc	AltConf	Trace
			Total	C	N	O	S			
1	A	240	1821	1135	330	346	10	0	0	0

There is a discrepancy between the modelled and reference sequences:

Chain	Residue	Modelled	Actual	Comment	Reference
A	81	ASN	ASP	conflict	UNP P00772

- Molecule 2 is N-[(BENZYLOXY)CARBONYL]-L-ALANINE (three-letter code: BBL) (formula: $C_{11}H_{13}NO_4$).



Mol	Chain	Residues	Atoms				ZeroOcc	AltConf
			Total	C	N	O		
2	A	1	15	11	1	3	0	0

- Molecule 3 is CALCIUM ION (three-letter code: CA) (formula: Ca).

Mol	Chain	Residues	Atoms		ZeroOcc	AltConf
3	A	1	Total	Ca	0	0
			1	1		

- Molecule 4 is SULFATE ION (three-letter code: SO4) (formula: O₄S).



Mol	Chain	Residues	Atoms			ZeroOcc	AltConf
4	A	1	Total	O	S	0	0
			5	4	1		

- Molecule 5 is water.

Mol	Chain	Residues	Atoms		ZeroOcc	AltConf
5	A	126	Total	O	0	0
			126	126		

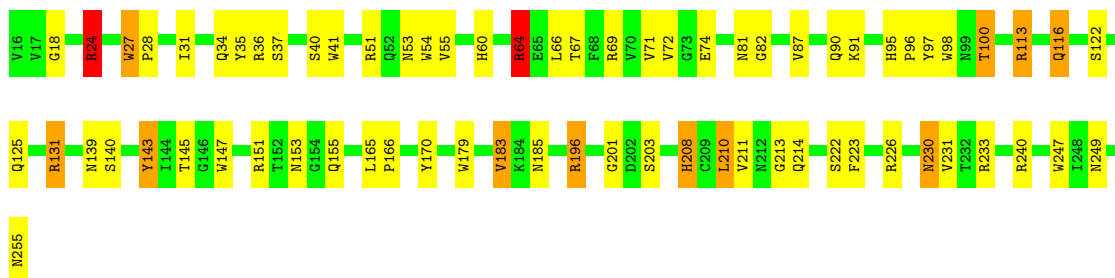
3 Residue-property plots [i](#)

These plots are drawn for all protein, RNA, DNA and oligosaccharide chains in the entry. The first graphic for a chain summarises the proportions of the various outlier classes displayed in the second graphic. The second graphic shows the sequence view annotated by issues in geometry. Residues are color-coded according to the number of geometric quality criteria for which they contain at least one outlier: green = 0, yellow = 1, orange = 2 and red = 3 or more. Stretches of 2 or more consecutive residues without any outlier are shown as a green connector. Residues present in the sample, but not in the model, are shown in grey.

Note EDS was not executed.

- Molecule 1: PORCINE PANCREATIC ELASTASE

Chain A:  71% 24% 5%



4 Data and refinement statistics

Xtrriage (Phenix) and EDS were not executed - this section is therefore incomplete.

Property	Value	Source
Space group	P 21 21 21	Depositor
Cell constants a, b, c, α , β , γ	52.02Å 57.22Å 74.66Å 90.00° 90.00° 90.00°	Depositor
Resolution (Å)	10.00 – 2.30	Depositor
% Data completeness (in resolution range)	(Not available) (10.00-2.30)	Depositor
R_{merge}	(Not available)	Depositor
R_{sym}	(Not available)	Depositor
Refinement program	X-PLOR	Depositor
R, R_{free}	0.210 , (Not available)	Depositor
Estimated twinning fraction	No twinning to report.	Xtrriage
Total number of atoms	1968	wwPDB-VP
Average B, all atoms (Å ²)	12.0	wwPDB-VP

5 Model quality i

5.1 Standard geometry i

Bond lengths and bond angles in the following residue types are not validated in this section: CA, SO4, BBL

The Z score for a bond length (or angle) is the number of standard deviations the observed value is removed from the expected value. A bond length (or angle) with $|Z| > 5$ is considered an outlier worth inspection. RMSZ is the root-mean-square of all Z scores of the bond lengths (or angles).

Mol	Chain	Bond lengths		Bond angles	
		RMSZ	# Z >5	RMSZ	# Z >5
1	A	0.97	0/1861	1.75	49/2543 (1.9%)

There are no bond length outliers.

All (49) bond angle outliers are listed below:

Mol	Chain	Res	Type	Atoms	Z	Observed(°)	Ideal(°)
1	A	24	ARG	NE-CZ-NH2	-11.43	114.58	120.30
1	A	24	ARG	NE-CZ-NH1	10.39	125.50	120.30
1	A	41	TRP	CD1-CG-CD2	9.86	114.19	106.30
1	A	240	ARG	NE-CZ-NH2	-9.56	115.52	120.30
1	A	179	TRP	CD1-CG-CD2	9.49	113.89	106.30
1	A	51	ARG	NE-CZ-NH2	-9.28	115.66	120.30
1	A	151	ARG	NE-CZ-NH1	8.30	124.45	120.30
1	A	247	TRP	CD1-CG-CD2	8.26	112.91	106.30
1	A	51	ARG	NE-CZ-NH1	7.56	124.08	120.30
1	A	179	TRP	CE2-CD2-CG	-7.45	101.34	107.30
1	A	247	TRP	CE2-CD2-CG	-7.33	101.43	107.30
1	A	41	TRP	CE2-CD2-CG	-7.26	101.50	107.30
1	A	64	ARG	NE-CZ-NH1	6.86	123.73	120.30
1	A	98	TRP	CD1-CG-CD2	6.83	111.76	106.30
1	A	41	TRP	CG-CD1-NE1	-6.82	103.28	110.10
1	A	131	ARG	CA-CB-CG	6.62	127.95	113.40
1	A	98	TRP	CE2-CD2-CG	-6.49	102.11	107.30
1	A	147	TRP	CD1-CG-CD2	6.49	111.49	106.30
1	A	226	ARG	NE-CZ-NH2	-6.39	117.11	120.30
1	A	196	ARG	NE-CZ-NH2	-6.34	117.13	120.30
1	A	147	TRP	CE2-CD2-CG	-6.27	102.28	107.30
1	A	100	THR	CA-CB-CG2	-6.22	103.69	112.40
1	A	196	ARG	NE-CZ-NH1	6.20	123.40	120.30
1	A	36	ARG	NE-CZ-NH1	6.14	123.37	120.30

Continued on next page...

Continued from previous page...

Mol	Chain	Res	Type	Atoms	Z	Observed(°)	Ideal(°)
1	A	231	VAL	CG1-CB-CG2	-6.04	101.24	110.90
1	A	27	TRP	CE2-CD2-CG	-6.01	102.49	107.30
1	A	41	TRP	CG-CD2-CE3	5.98	139.28	133.90
1	A	55	VAL	CG1-CB-CG2	-5.98	101.34	110.90
1	A	113	ARG	CA-CB-CG	5.94	126.48	113.40
1	A	27	TRP	CB-CG-CD1	-5.91	119.32	127.00
1	A	27	TRP	CG-CD2-CE3	5.89	139.20	133.90
1	A	179	TRP	CG-CD1-NE1	-5.85	104.25	110.10
1	A	247	TRP	CG-CD1-NE1	-5.78	104.32	110.10
1	A	54	TRP	CG-CD2-CE3	5.65	138.99	133.90
1	A	247	TRP	CG-CD2-CE3	5.64	138.98	133.90
1	A	183	VAL	CA-CB-CG2	-5.59	102.51	110.90
1	A	54	TRP	CE2-CD2-CG	-5.53	102.87	107.30
1	A	98	TRP	CG-CD1-NE1	-5.47	104.63	110.10
1	A	247	TRP	CB-CG-CD1	-5.31	120.10	127.00
1	A	240	ARG	CB-CG-CD	-5.30	97.83	111.60
1	A	41	TRP	CB-CG-CD1	-5.28	120.13	127.00
1	A	95	HIS	CA-CB-CG	-5.26	104.65	113.60
1	A	143	TYR	CB-CG-CD1	-5.24	117.86	121.00
1	A	27	TRP	CD1-CG-CD2	5.18	110.44	106.30
1	A	179	TRP	CG-CD2-CE3	5.17	138.55	133.90
1	A	36	ARG	NE-CZ-NH2	-5.14	117.73	120.30
1	A	170	TYR	CB-CG-CD2	-5.12	117.93	121.00
1	A	97	TYR	CB-CG-CD1	-5.06	117.97	121.00
1	A	131	ARG	NE-CZ-NH1	5.00	122.80	120.30

There are no chirality outliers.

There are no planarity outliers.

5.2 Too-close contacts

In the following table, the Non-H and H(model) columns list the number of non-hydrogen atoms and hydrogen atoms in the chain respectively. The H(added) column lists the number of hydrogen atoms added and optimized by MolProbity. The Clashes column lists the number of clashes within the asymmetric unit, whereas Symm-Clashes lists symmetry-related clashes.

Mol	Chain	Non-H	H(model)	H(added)	Clashes	Symm-Clashes
1	A	1821	0	1758	40	5
2	A	15	0	12	12	0
3	A	1	0	0	0	0
4	A	5	0	0	0	1

Continued on next page...

Continued from previous page...

Mol	Chain	Non-H	H(model)	H(added)	Clashes	Symm-Clashes
5	A	126	0	0	7	3
All	All	1968	0	1770	41	7

The all-atom clashscore is defined as the number of clashes found per 1000 atoms (including hydrogen atoms). The all-atom clashscore for this structure is 12.

All (41) close contacts within the same asymmetric unit are listed below, sorted by their clash magnitude.

Atom-1	Atom-2	Interatomic distance (Å)	Clash overlap (Å)
1:A:203:SER:CB	2:A:256:BBL:CB2	2.38	1.01
1:A:213:GLY:N	5:A:349:HOH:O	1.96	0.97
1:A:81:ASN:HB3	5:A:310:HOH:O	1.66	0.94
2:A:256:BBL:HD1	5:A:505:HOH:O	1.72	0.90
1:A:222:SER:O	2:A:256:BBL:HE1	1.85	0.77
1:A:34:GLN:HE22	1:A:69:ARG:HH21	1.31	0.77
1:A:230:ASN:H	1:A:230:ASN:HD22	1.36	0.71
1:A:122:SER:O	5:A:393:HOH:O	2.07	0.71
1:A:203:SER:HB2	2:A:256:BBL:CB2	2.20	0.71
1:A:34:GLN:NE2	1:A:69:ARG:HH21	1.91	0.68
1:A:91:LYS:HB3	1:A:113:ARG:HG2	1.78	0.66
1:A:28:PRO:HB2	1:A:125:GLN:HB2	1.82	0.62
1:A:60:HIS:CD2	2:A:256:BBL:CE2	2.82	0.62
1:A:223:PHE:HB3	2:A:256:BBL:HE1	1.83	0.60
1:A:222:SER:O	2:A:256:BBL:CE1	2.51	0.58
1:A:31:ILE:HG22	1:A:72:VAL:HG12	1.85	0.58
1:A:24:ARG:HH22	1:A:81:ASN:HD22	1.50	0.57
1:A:60:HIS:CG	2:A:256:BBL:HE2	2.40	0.56
1:A:87:VAL:HG23	1:A:116:GLN:HE21	1.70	0.56
1:A:60:HIS:CE1	2:A:256:BBL:CZ	2.89	0.55
1:A:28:PRO:HD2	5:A:334:HOH:O	2.08	0.54
1:A:60:HIS:CG	2:A:256:BBL:CE2	2.92	0.52
1:A:230:ASN:H	1:A:230:ASN:ND2	2.06	0.51
1:A:34:GLN:HE21	1:A:69:ARG:HE	1.60	0.49
1:A:24:ARG:NH2	1:A:81:ASN:HD22	2.11	0.48
1:A:64:ARG:HB3	1:A:66:LEU:HG	1.96	0.48
1:A:201:GLY:N	2:A:256:BBL:OG1	2.46	0.47
1:A:210:LEU:HD12	5:A:536:HOH:O	2.15	0.47
1:A:211:VAL:O	1:A:214:GLN:HG2	2.16	0.46
1:A:18:GLY:O	1:A:196:ARG:HG2	2.15	0.46
1:A:31:ILE:CG2	1:A:72:VAL:HG12	2.46	0.46
1:A:35:TYR:HA	1:A:67:THR:O	2.16	0.45

Continued on next page...

Continued from previous page...

Atom-1	Atom-2	Interatomic distance (Å)	Clash overlap (Å)
1:A:27:TRP:CD1	1:A:145:THR:HG21	2.53	0.44
1:A:140:SER:O	1:A:166:PRO:HA	2.19	0.43
1:A:64:ARG:HE	1:A:66:LEU:HD21	1.84	0.43
1:A:74:GLU:HB3	5:A:322:HOH:O	2.19	0.42
1:A:143:TYR:O	1:A:208:HIS:HD2	2.02	0.42
1:A:71:VAL:HG12	1:A:74:GLU:HB2	2.02	0.42
1:A:233:ARG:HH11	1:A:233:ARG:HD3	1.73	0.41
1:A:201:GLY:H	2:A:256:BBL:HBZ3	1.86	0.40
1:A:53:ASN:HD22	1:A:113:ARG:NH2	2.19	0.40

All (7) symmetry-related close contacts are listed below. The label for Atom-2 includes the symmetry operator and encoded unit-cell translations to be applied.

Atom-1	Atom-2	Interatomic distance (Å)	Clash overlap (Å)
1:A:82:GLY:O	5:A:502:HOH:O[4_566]	1.44	0.76
4:A:290:SO4:O1	5:A:513:HOH:O[2_665]	1.56	0.64
1:A:81:ASN:O	1:A:196:ARG:NH1[4_566]	1.70	0.50
5:A:520:HOH:O	5:A:558:HOH:O[4_566]	1.99	0.21
1:A:131:ARG:NH2	1:A:153:ASN:ND2[2_665]	2.15	0.05
1:A:155:GLN:OE1	1:A:185:ASN:OD1[2_664]	2.16	0.04
1:A:131:ARG:NE	1:A:153:ASN:ND2[2_665]	2.17	0.03

5.3 Torsion angles [i](#)

5.3.1 Protein backbone [i](#)

In the following table, the Percentiles column shows the percent Ramachandran outliers of the chain as a percentile score with respect to all X-ray entries followed by that with respect to entries of similar resolution.

The Analysed column shows the number of residues for which the backbone conformation was analysed, and the total number of residues.

Mol	Chain	Analysed	Favoured	Allowed	Outliers	Percentiles
1	A	238/240 (99%)	228 (96%)	9 (4%)	1 (0%)	34 42

All (1) Ramachandran outliers are listed below:

Mol	Chain	Res	Type
1	A	96	PRO

5.3.2 Protein sidechains [i](#)

In the following table, the Percentiles column shows the percent sidechain outliers of the chain as a percentile score with respect to all X-ray entries followed by that with respect to entries of similar resolution.

The Analysed column shows the number of residues for which the sidechain conformation was analysed, and the total number of residues.

Mol	Chain	Analysed	Rotameric	Outliers	Percentiles
1	A	198/198 (100%)	183 (92%)	15 (8%)	13 16

All (15) residues with a non-rotameric sidechain are listed below:

Mol	Chain	Res	Type
1	A	24	ARG
1	A	37	SER
1	A	40	SER
1	A	64	ARG
1	A	90	GLN
1	A	100	THR
1	A	116	GLN
1	A	139	ASN
1	A	165	LEU
1	A	183	VAL
1	A	208	HIS
1	A	210	LEU
1	A	230	ASN
1	A	249	ASN
1	A	255	ASN

Sometimes sidechains can be flipped to improve hydrogen bonding and reduce clashes. All (10) such sidechains are listed below:

Mol	Chain	Res	Type
1	A	34	GLN
1	A	78	ASN
1	A	95	HIS
1	A	116	GLN
1	A	125	GLN
1	A	155	GLN
1	A	158	GLN
1	A	230	ASN
1	A	249	ASN
1	A	250	ASN

5.3.3 RNA [i](#)

There are no RNA molecules in this entry.

5.4 Non-standard residues in protein, DNA, RNA chains [i](#)

There are no non-standard protein/DNA/RNA residues in this entry.

5.5 Carbohydrates [i](#)

There are no monosaccharides in this entry.

5.6 Ligand geometry [i](#)

Of 3 ligands modelled in this entry, 1 is monoatomic - leaving 2 for Mogul analysis.

In the following table, the Counts columns list the number of bonds (or angles) for which Mogul statistics could be retrieved, the number of bonds (or angles) that are observed in the model and the number of bonds (or angles) that are defined in the Chemical Component Dictionary. The Link column lists molecule types, if any, to which the group is linked. The Z score for a bond length (or angle) is the number of standard deviations the observed value is removed from the expected value. A bond length (or angle) with $|Z| > 2$ is considered an outlier worth inspection. RMSZ is the root-mean-square of all Z scores of the bond lengths (or angles).

Mol	Type	Chain	Res	Link	Bond lengths			Bond angles		
					Counts	RMSZ	# Z > 2	Counts	RMSZ	# Z > 2
4	SO4	A	290	-	4,4,4	0.60	0	6,6,6	0.35	0
2	BBL	A	256	1	14,15,16	2.43	2 (14%)	14,18,20	1.77	1 (7%)

In the following table, the Chirals column lists the number of chiral outliers, the number of chiral centers analysed, the number of these observed in the model and the number defined in the Chemical Component Dictionary. Similar counts are reported in the Torsion and Rings columns. '-' means no outliers of that kind were identified.

Mol	Type	Chain	Res	Link	Chirals	Torsions	Rings
2	BBL	A	256	1	-	4/9/11/13	0/1/1/1

All (2) bond length outliers are listed below:

Mol	Chain	Res	Type	Atoms	Z	Observed(Å)	Ideal(Å)
2	A	256	BBL	OEZ-C	7.97	1.50	1.35
2	A	256	BBL	CA-N	-3.28	1.43	1.46

All (1) bond angle outliers are listed below:

Mol	Chain	Res	Type	Atoms	Z	Observed(°)	Ideal(°)
2	A	256	BBL	CBZ-CA-N	-6.19	102.74	109.61

There are no chirality outliers.

All (4) torsion outliers are listed below:

Mol	Chain	Res	Type	Atoms
2	A	256	BBL	CB2-CA-N-C
2	A	256	BBL	CG-CB-OEZ-C
2	A	256	BBL	N-C-OEZ-CB
2	A	256	BBL	O-C-OEZ-CB

There are no ring outliers.

2 monomers are involved in 13 short contacts:

Mol	Chain	Res	Type	Clashes	Symm-Clashes
4	A	290	SO4	0	1
2	A	256	BBL	12	0

5.7 Other polymers [i](#)

There are no such residues in this entry.

5.8 Polymer linkage issues [i](#)

There are no chain breaks in this entry.

6 Fit of model and data

6.1 Protein, DNA and RNA chains

EDS was not executed - this section is therefore empty.

6.2 Non-standard residues in protein, DNA, RNA chains

EDS was not executed - this section is therefore empty.

6.3 Carbohydrates

EDS was not executed - this section is therefore empty.

6.4 Ligands

EDS was not executed - this section is therefore empty.

6.5 Other polymers

EDS was not executed - this section is therefore empty.