



Full wwPDB X-ray Structure Validation Report ⓘ

May 26, 2020 – 05:14 pm BST

PDB ID : 3ETC
Title : 2.1 Å structure of acyl-adenylate synthetase from *Methanosarcina acetivorans* containing a link between Lys256 and Cys298
Authors : Shah, M.B.; Gulick, A.M.; Smith, K.S.; Ingram-Smith, C.
Deposited on : 2008-10-07
Resolution : 2.10 Å (reported)

This is a Full wwPDB X-ray Structure Validation Report for a publicly released PDB entry.

We welcome your comments at validation@mail.wwpdb.org

A user guide is available at

<https://www.wwpdb.org/validation/2017/XrayValidationReportHelp>

with specific help available everywhere you see the ⓘ symbol.

The following versions of software and data (see [references ⓘ](#)) were used in the production of this report:

MolProbity : 4.02b-467
Mogul : 1.8.5 (274361), CSD as541be (2020)
Xtriage (Phenix) : 1.13
EDS : 2.11
Percentile statistics : 20191225.v01 (using entries in the PDB archive December 25th 2019)
Refmac : 5.8.0158
CCP4 : 7.0.044 (Gargrove)
Ideal geometry (proteins) : Engh & Huber (2001)
Ideal geometry (DNA, RNA) : Parkinson et al. (1996)
Validation Pipeline (wwPDB-VP) : 2.11

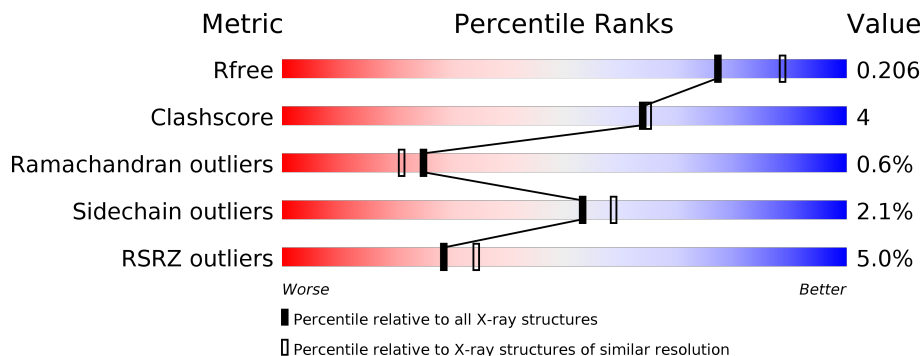
1 Overall quality at a glance

The following experimental techniques were used to determine the structure:

X-RAY DIFFRACTION

The reported resolution of this entry is 2.10 Å.

Percentile scores (ranging between 0-100) for global validation metrics of the entry are shown in the following graphic. The table shows the number of entries on which the scores are based.



Metric	Whole archive (#Entries)	Similar resolution (#Entries, resolution range(Å))
R_{free}	130704	5197 (2.10-2.10)
Clashscore	141614	5710 (2.10-2.10)
Ramachandran outliers	138981	5647 (2.10-2.10)
Sidechain outliers	138945	5648 (2.10-2.10)
RSRZ outliers	127900	5083 (2.10-2.10)

The table below summarises the geometric issues observed across the polymeric chains and their fit to the electron density. The red, orange, yellow and green segments on the lower bar indicate the fraction of residues that contain outliers for ≥ 3 , 2, 1 and 0 types of geometric quality criteria respectively. A grey segment represents the fraction of residues that are not modelled. The numeric value for each fraction is indicated below the corresponding segment, with a dot representing fractions $\leq 5\%$. The upper red bar (where present) indicates the fraction of residues that have poor fit to the electron density. The numeric value is given above the bar.

Mol	Chain	Length	Quality of chain
1	A	580	 6% 84% 7% 8%
1	B	580	 3% 84% 7% 7%

The following table lists non-polymeric compounds, carbohydrate monomers and non-standard residues in protein, DNA, RNA chains that are outliers for geometric or electron-density-fit criteria:

Mol	Type	Chain	Res	Chirality	Geometry	Clashes	Electron density
2	FOR	B	999	-	-	X	-
8	GOL	A	1005	-	-	X	-

2 Entry composition [i](#)

There are 9 unique types of molecules in this entry. The entry contains 9016 atoms, of which 0 are hydrogens and 0 are deuteriums.

In the tables below, the ZeroOcc column contains the number of atoms modelled with zero occupancy, the AltConf column contains the number of residues with at least one atom in alternate conformation and the Trace column contains the number of residues modelled with at most 2 atoms.

- Molecule 1 is a protein called AMP-binding protein.

Mol	Chain	Residues	Atoms					ZeroOcc	AltConf	Trace
			Total	C	N	O	S			
1	A	531	4191	2719	663	786	23	0	3	0
1	B	537	4233	2746	668	796	23	0	2	0

There are 46 discrepancies between the modelled and reference sequences:

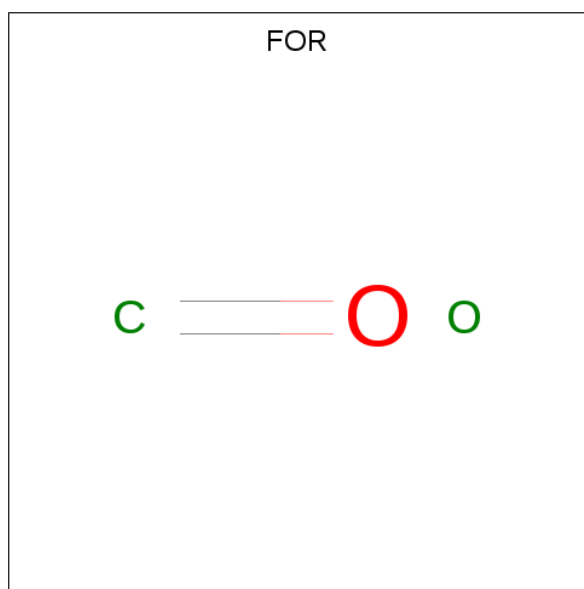
Chain	Residue	Modelled	Actual	Comment	Reference
A	-22	MET	-	EXPRESSION TAG	UNP Q8TLW1
A	-21	GLY	-	EXPRESSION TAG	UNP Q8TLW1
A	-20	HIS	-	EXPRESSION TAG	UNP Q8TLW1
A	-19	HIS	-	EXPRESSION TAG	UNP Q8TLW1
A	-18	HIS	-	EXPRESSION TAG	UNP Q8TLW1
A	-17	HIS	-	EXPRESSION TAG	UNP Q8TLW1
A	-16	HIS	-	EXPRESSION TAG	UNP Q8TLW1
A	-15	HIS	-	EXPRESSION TAG	UNP Q8TLW1
A	-14	HIS	-	EXPRESSION TAG	UNP Q8TLW1
A	-13	HIS	-	EXPRESSION TAG	UNP Q8TLW1
A	-12	HIS	-	EXPRESSION TAG	UNP Q8TLW1
A	-11	HIS	-	EXPRESSION TAG	UNP Q8TLW1
A	-10	SER	-	EXPRESSION TAG	UNP Q8TLW1
A	-9	SER	-	EXPRESSION TAG	UNP Q8TLW1
A	-8	GLY	-	EXPRESSION TAG	UNP Q8TLW1
A	-7	HIS	-	EXPRESSION TAG	UNP Q8TLW1
A	-6	ILE	-	EXPRESSION TAG	UNP Q8TLW1
A	-5	ASP	-	EXPRESSION TAG	UNP Q8TLW1
A	-4	ASP	-	EXPRESSION TAG	UNP Q8TLW1
A	-3	ASP	-	EXPRESSION TAG	UNP Q8TLW1
A	-2	ASP	-	EXPRESSION TAG	UNP Q8TLW1
A	-1	LYS	-	EXPRESSION TAG	UNP Q8TLW1
A	0	HIS	-	EXPRESSION TAG	UNP Q8TLW1
B	-22	MET	-	EXPRESSION TAG	UNP Q8TLW1
B	-21	GLY	-	EXPRESSION TAG	UNP Q8TLW1

Continued on next page...

Continued from previous page...

Chain	Residue	Modelled	Actual	Comment	Reference
B	-20	HIS	-	EXPRESSION TAG	UNP Q8TLW1
B	-19	HIS	-	EXPRESSION TAG	UNP Q8TLW1
B	-18	HIS	-	EXPRESSION TAG	UNP Q8TLW1
B	-17	HIS	-	EXPRESSION TAG	UNP Q8TLW1
B	-16	HIS	-	EXPRESSION TAG	UNP Q8TLW1
B	-15	HIS	-	EXPRESSION TAG	UNP Q8TLW1
B	-14	HIS	-	EXPRESSION TAG	UNP Q8TLW1
B	-13	HIS	-	EXPRESSION TAG	UNP Q8TLW1
B	-12	HIS	-	EXPRESSION TAG	UNP Q8TLW1
B	-11	HIS	-	EXPRESSION TAG	UNP Q8TLW1
B	-10	SER	-	EXPRESSION TAG	UNP Q8TLW1
B	-9	SER	-	EXPRESSION TAG	UNP Q8TLW1
B	-8	GLY	-	EXPRESSION TAG	UNP Q8TLW1
B	-7	HIS	-	EXPRESSION TAG	UNP Q8TLW1
B	-6	ILE	-	EXPRESSION TAG	UNP Q8TLW1
B	-5	ASP	-	EXPRESSION TAG	UNP Q8TLW1
B	-4	ASP	-	EXPRESSION TAG	UNP Q8TLW1
B	-3	ASP	-	EXPRESSION TAG	UNP Q8TLW1
B	-2	ASP	-	EXPRESSION TAG	UNP Q8TLW1
B	-1	LYS	-	EXPRESSION TAG	UNP Q8TLW1
B	0	HIS	-	EXPRESSION TAG	UNP Q8TLW1

- Molecule 2 is FORMYL GROUP (three-letter code: FOR) (formula: CH₂O).



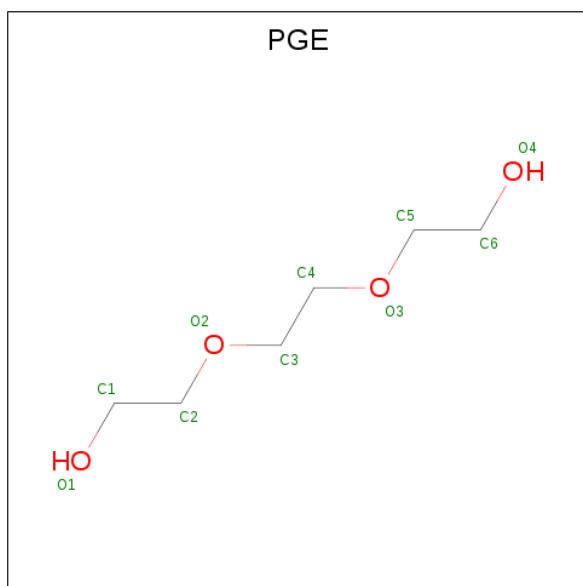
Mol	Chain	Residues	Atoms			ZeroOcc	AltConf
			Total	C	O		
2	A	1	2	1	1	0	0

Continued on next page...

Continued from previous page...

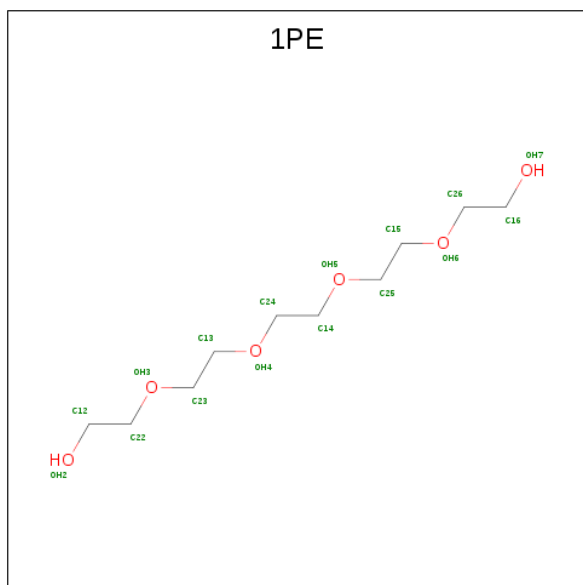
Mol	Chain	Residues	Atoms			ZeroOcc	AltConf
			Total	C	O		
2	B	1	2	1	1	0	0

- Molecule 3 is TRIETHYLENE GLYCOL (three-letter code: PGE) (formula: $C_6H_{14}O_4$).



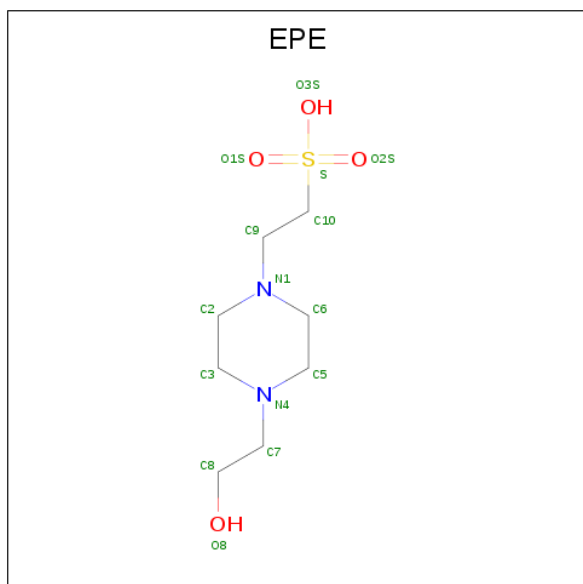
Mol	Chain	Residues	Atoms			ZeroOcc	AltConf
			Total	C	O		
3	A	1	10	6	4	0	0
3	B	1	10	6	4	0	0
3	B	1	10	6	4	0	0

- Molecule 4 is PENTAETHYLENE GLYCOL (three-letter code: 1PE) (formula: $C_{10}H_{22}O_6$).



Mol	Chain	Residues	Atoms			ZeroOcc	AltConf
4	A	1	Total	C	O	0	0
			16	10	6		
4	A	1	Total	C	O	0	0
			16	10	6		

- Molecule 5 is 4-(2-HYDROXYETHYL)-1-PIPERAZINE ETHANESULFONIC ACID (three-letter code: EPE) (formula: C₈H₁₈N₂O₄S).



Mol	Chain	Residues	Atoms					ZeroOcc	AltConf
5	A	1	Total	C	N	O	S	0	0
			15	8	2	4	1		

Continued on next page...

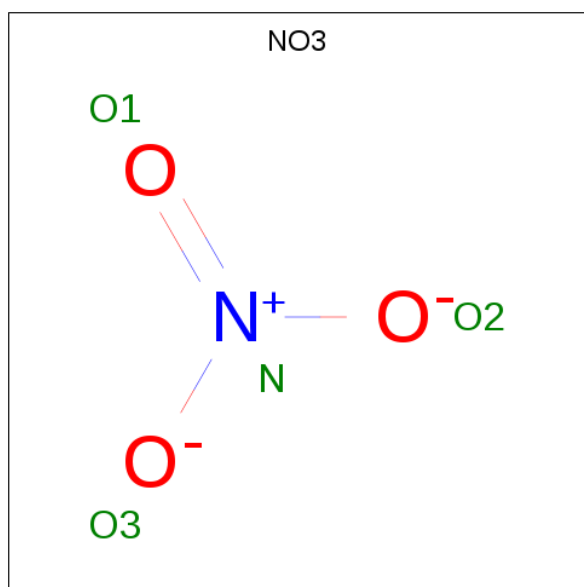
Continued from previous page...

Mol	Chain	Residues	Atoms					ZeroOcc	AltConf
			Total	C	N	O	S		
5	A	1	Total 15	C 8	N 2	O 4	S 1	0	0
5	B	1	Total 15	C 8	N 2	O 4	S 1	0	0

- Molecule 6 is MAGNESIUM ION (three-letter code: MG) (formula: Mg).

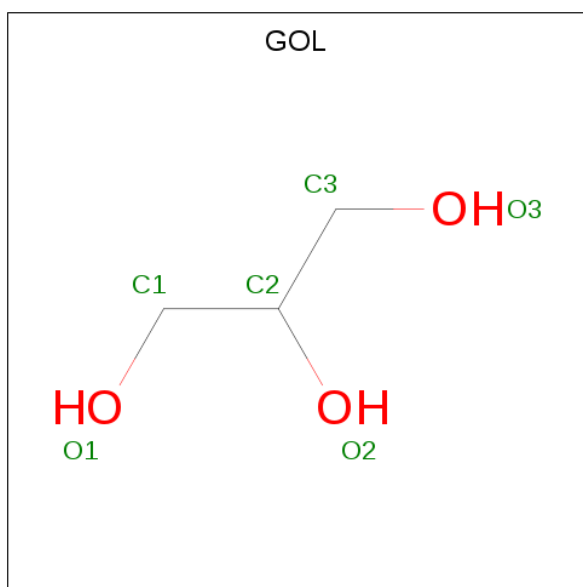
Mol	Chain	Residues	Atoms		ZeroOcc	AltConf
			Total	Mg		
6	B	1	Total 1	Mg 1	0	0
6	A	1	Total 1	Mg 1	0	0

- Molecule 7 is NITRATE ION (three-letter code: NO3) (formula: NO₃).



Mol	Chain	Residues	Atoms			ZeroOcc	AltConf
			Total	N	O		
7	A	1	Total 4	N 1	O 3	0	0
7	B	1	Total 4	N 1	O 3	0	0

- Molecule 8 is GLYCEROL (three-letter code: GOL) (formula: C₃H₈O₃).



Mol	Chain	Residues	Atoms	ZeroOcc	AltConf
8	A	1	Total C O 6 3 3	0	0
8	A	1	Total C O 6 3 3	0	0
8	A	1	Total C O 6 3 3	0	0
8	A	1	Total C O 6 3 3	0	0
8	B	1	Total C O 6 3 3	0	0
8	B	1	Total C O 6 3 3	0	0
8	B	1	Total C O 6 3 3	0	0

- Molecule 9 is water.

Mol	Chain	Residues	Atoms	ZeroOcc	AltConf
9	A	204	Total O 204 204	0	0
9	B	225	Total O 225 225	0	0

4 Data and refinement statistics

Property	Value	Source
Space group	P 21 21 21	Depositor
Cell constants a, b, c, α , β , γ	91.70Å 96.37Å 141.54Å 90.00° 90.00° 90.00°	Depositor
Resolution (Å)	29.88 – 2.10 29.88 – 2.00	Depositor EDS
% Data completeness (in resolution range)	99.9 (29.88-2.10) 99.9 (29.88-2.00)	Depositor EDS
R_{merge}	0.08	Depositor
R_{sym}	(Not available)	Depositor
$\langle I/\sigma(I) \rangle$ ¹	2.29 (at 2.00Å)	Xtrriage
Refinement program	REFMAC 5.2.0005	Depositor
R, R_{free}	0.175 , 0.207 0.176 , 0.206	Depositor DCC
R_{free} test set	4326 reflections (5.08%)	wwPDB-VP
Wilson B-factor (Å ²)	27.7	Xtrriage
Anisotropy	0.339	Xtrriage
Bulk solvent k_{sol} (e/Å ³), B_{sol} (Å ²)	0.40 , 61.8	EDS
L-test for twinning ²	$\langle L \rangle = 0.49$, $\langle L^2 \rangle = 0.33$	Xtrriage
Estimated twinning fraction	0.014 for k,h,-l	Xtrriage
F_o, F_c correlation	0.95	EDS
Total number of atoms	9016	wwPDB-VP
Average B, all atoms (Å ²)	27.0	wwPDB-VP

Xtrriage's analysis on translational NCS is as follows: *The largest off-origin peak in the Patterson function is 3.75% of the height of the origin peak. No significant pseudotranslation is detected.*

¹Intensities estimated from amplitudes.

²Theoretical values of $\langle |L| \rangle$, $\langle L^2 \rangle$ for acentric reflections are 0.5, 0.333 respectively for untwinned datasets, and 0.375, 0.2 for perfectly twinned datasets.

5 Model quality [i](#)

5.1 Standard geometry [i](#)

Bond lengths and bond angles in the following residue types are not validated in this section: GOL, MG, PGE, FOR, 1PE, EPE, NO3

The Z score for a bond length (or angle) is the number of standard deviations the observed value is removed from the expected value. A bond length (or angle) with $|Z| > 5$ is considered an outlier worth inspection. RMSZ is the root-mean-square of all Z scores of the bond lengths (or angles).

Mol	Chain	Bond lengths		Bond angles	
		RMSZ	# Z >5	RMSZ	# Z >5
1	A	0.49	1/4317 (0.0%)	0.56	0/5869
1	B	0.49	0/4360	0.57	0/5933
All	All	0.49	1/8677 (0.0%)	0.57	0/11802

All (1) bond length outliers are listed below:

Mol	Chain	Res	Type	Atoms	Z	Observed(Å)	Ideal(Å)
1	A	504	TYR	C-O	5.00	1.32	1.23

There are no bond angle outliers.

There are no chirality outliers.

There are no planarity outliers.

5.2 Too-close contacts [i](#)

In the following table, the Non-H and H(model) columns list the number of non-hydrogen atoms and hydrogen atoms in the chain respectively. The H(added) column lists the number of hydrogen atoms added and optimized by MolProbity. The Clashes column lists the number of clashes within the asymmetric unit, whereas Symm-Clashes lists symmetry related clashes.

Mol	Chain	Non-H	H(model)	H(added)	Clashes	Symm-Clashes
1	A	4191	0	3993	32	0
1	B	4233	0	4033	38	0
2	A	2	0	0	0	0
2	B	2	0	0	4	0
3	A	10	0	14	5	0
3	B	20	0	28	2	0
4	A	32	0	44	2	0
5	A	30	0	34	2	0

Continued on next page...

Continued from previous page...

Mol	Chain	Non-H	H(model)	H(added)	Clashes	Symm-Clashes
5	B	15	0	17	1	0
6	A	1	0	0	0	0
6	B	1	0	0	0	0
7	A	4	0	0	0	0
7	B	4	0	0	0	0
8	A	24	0	32	9	0
8	B	18	0	24	1	0
9	A	204	0	0	4	0
9	B	225	0	0	3	0
All	All	9016	0	8219	71	0

The all-atom clashscore is defined as the number of clashes found per 1000 atoms (including hydrogen atoms). The all-atom clashscore for this structure is 4.

All (71) close contacts within the same asymmetric unit are listed below, sorted by their clash magnitude.

Atom-1	Atom-2	Interatomic distance (Å)	Clash overlap (Å)
1:B:256:LYS:NZ	2:B:999:FOR:C	1.76	1.39
1:B:256:LYS:HZ3	2:B:999:FOR:C	1.32	1.23
1:B:242:ASP:O	1:B:243:ASP:CB	1.91	1.14
1:B:242:ASP:O	1:B:243:ASP:HB2	1.23	1.00
1:B:256:LYS:HZ1	2:B:999:FOR:C	1.59	0.95
1:B:315:TYR:O	1:B:317:PHE:N	2.18	0.76
1:B:56:ASP:HB3	1:B:58:TYR:H	1.50	0.74
9:A:1093:HOH:O	1:B:218:LYS:HE3	1.89	0.73
1:A:454:ILE:HD13	1:A:461:LYS:HE2	1.72	0.71
1:A:56:ASP:HB3	1:A:58:TYR:H	1.53	0.70
8:A:1005:GOL:H31	9:A:1169:HOH:O	1.94	0.67
1:B:391:CYS:HB3	1:B:395:GLU:HG3	1.77	0.66
1:B:485:VAL:HG21	1:B:530:ILE:HD12	1.77	0.66
1:A:485:VAL:HG21	1:A:530:ILE:HD12	1.79	0.64
1:A:353:THR:HG23	8:A:1005:GOL:H12	1.80	0.64
1:B:277:TYR:CZ	5:B:998:EPE:H61	2.34	0.62
8:A:1005:GOL:C3	9:A:1169:HOH:O	2.47	0.62
1:B:447:PHE:CD2	8:B:1003:GOL:H12	2.36	0.61
1:A:415:TYR:CE1	8:A:1004:GOL:H31	2.36	0.61
1:B:352:GLN:HG2	1:B:354:GLU:OE1	2.03	0.59
1:B:256:LYS:NZ	1:B:298:CYS:SG	2.77	0.57
1:A:277:TYR:CZ	5:A:996:EPE:H61	2.40	0.57
1:A:417:LYS:O	1:B:133:LYS:HE3	2.05	0.56
1:B:392:GLU:O	1:B:395:GLU:HG2	2.04	0.56

Continued on next page...

Continued from previous page...

Atom-1	Atom-2	Interatomic distance (Å)	Clash overlap (Å)
1:B:421:ARG:O	1:B:425:THR:HG23	2.06	0.55
1:B:304:TYR:O	1:B:308:ILE:HG12	2.08	0.54
1:A:353:THR:CG2	8:A:1005:GOL:H12	2.38	0.54
1:B:256:LYS:CE	2:B:999:FOR:C	2.73	0.53
1:A:421:ARG:O	1:A:425:THR:HG23	2.10	0.52
1:A:312:LEU:HD12	1:A:341:PHE:HB3	1.92	0.51
1:B:351:GLY:H	3:B:993:PGE:H52	1.75	0.51
1:B:278:ASP:OD2	9:B:1270:HOH:O	2.19	0.51
1:A:378:GLY:HA3	8:A:1002:GOL:H2	1.93	0.51
1:A:392:GLU:HG3	1:A:393:VAL:N	2.26	0.51
1:A:461:LYS:H	4:A:994:1PE:H261	1.77	0.50
1:A:326:ALA:HB1	4:A:994:1PE:H221	1.93	0.49
1:B:454:ILE:HD13	1:B:461:LYS:HE3	1.94	0.49
1:B:287:GLU:HG3	1:B:315:TYR:CE1	2.47	0.49
1:A:96:LYS:HG3	1:A:142:ILE:HD13	1.93	0.48
1:A:447:PHE:CD2	8:A:1003:GOL:H31	2.49	0.48
1:B:242:ASP:O	1:B:243:ASP:HB3	2.03	0.48
1:B:506:PRO:HB3	1:B:533:PHE:CD2	2.48	0.48
1:B:287:GLU:HG3	1:B:315:TYR:CD1	2.50	0.47
1:B:392:GLU:HG3	1:B:393:VAL:N	2.30	0.47
1:B:235:LYS:HE2	9:B:1115:HOH:O	2.14	0.46
1:B:96:LYS:HD3	1:B:120:HIS:CG	2.50	0.46
1:A:288:LYS:HE2	3:A:991:PGE:H32	1.98	0.46
1:B:193:PRO:HB3	1:B:197:VAL:HG13	1.96	0.46
1:B:425:THR:HG21	9:B:1320:HOH:O	2.16	0.46
1:A:288:LYS:HZ3	3:A:991:PGE:H62	1.81	0.45
1:A:425:THR:HG21	9:A:1189:HOH:O	2.15	0.45
1:A:255:GLY:H	8:A:1005:GOL:H11	1.80	0.45
1:A:277:TYR:CE2	5:A:996:EPE:H61	2.52	0.44
1:B:194:THR:O	1:B:197:VAL:HG12	2.18	0.44
1:B:242:ASP:OD2	1:B:242:ASP:O	2.36	0.43
1:A:288:LYS:NZ	3:A:991:PGE:H62	2.33	0.43
1:B:315:TYR:O	1:B:316:ASN:C	2.56	0.43
1:A:392:GLU:CG	1:A:393:VAL:N	2.82	0.43
1:A:288:LYS:NZ	3:A:991:PGE:H22	2.34	0.43
1:A:259:TRP:HH2	1:A:351:GLY:HA3	1.84	0.42
1:A:21:GLN:HA	1:A:377:PRO:HG3	2.01	0.42
1:A:288:LYS:HZ3	3:A:991:PGE:H22	1.84	0.42
1:A:312:LEU:HD12	1:A:341:PHE:CB	2.50	0.42
1:A:353:THR:HG23	8:A:1005:GOL:C1	2.48	0.42
1:B:308:ILE:HD12	1:B:337:ARG:HD3	2.02	0.41

Continued on next page...

Continued from previous page...

Atom-1	Atom-2	Interatomic distance (Å)	Clash overlap (Å)
1:B:52:MET:HB2	1:B:52:MET:HE2	1.71	0.41
1:A:476:ALA:HA	1:A:504:TYR:CD2	2.56	0.41
1:A:219:MET:O	1:A:415:TYR:HA	2.21	0.40
1:B:287:GLU:HB3	3:B:992:PGE:H2	2.03	0.40
1:A:392:GLU:CG	1:A:393:VAL:H	2.34	0.40
1:B:52:MET:HE1	1:B:102:TRP:CE2	2.56	0.40

There are no symmetry-related clashes.

5.3 Torsion angles [i](#)

5.3.1 Protein backbone [i](#)

In the following table, the Percentiles column shows the percent Ramachandran outliers of the chain as a percentile score with respect to all X-ray entries followed by that with respect to entries of similar resolution.

The Analysed column shows the number of residues for which the backbone conformation was analysed, and the total number of residues.

Mol	Chain	Analysed	Favoured	Allowed	Outliers	Percentiles	
1	A	530/580 (91%)	522 (98%)	6 (1%)	2 (0%)	34	32
1	B	537/580 (93%)	524 (98%)	9 (2%)	4 (1%)	22	18
All	All	1067/1160 (92%)	1046 (98%)	15 (1%)	6 (1%)	25	21

All (6) Ramachandran outliers are listed below:

Mol	Chain	Res	Type
1	B	243	ASP
1	B	316	ASN
1	A	262	LEU
1	B	262	LEU
1	A	356	VAL
1	B	356	VAL

5.3.2 Protein sidechains [i](#)

In the following table, the Percentiles column shows the percent sidechain outliers of the chain as a percentile score with respect to all X-ray entries followed by that with respect to entries of similar resolution.

The Analysed column shows the number of residues for which the sidechain conformation was analysed, and the total number of residues.

Mol	Chain	Analysed	Rotameric	Outliers	Percentiles	
1	A	438/503 (87%)	427 (98%)	11 (2%)	47	52
1	B	444/503 (88%)	437 (98%)	7 (2%)	62	69
All	All	882/1006 (88%)	864 (98%)	18 (2%)	53	60

All (18) residues with a non-rotameric sidechain are listed below:

Mol	Chain	Res	Type
1	A	3	SER
1	A	15	GLU
1	A	57	ASP
1	A	125	ARG
1	A	182	GLU
1	A	200	LYS
1	A	279	ARG
1	A	288	LYS
1	A	317	PHE
1	A	412	PHE
1	A	414	HIS
1	B	56	ASP
1	B	125	ARG
1	B	133	LYS
1	B	317	PHE
1	B	318	SER
1	B	341	PHE
1	B	412	PHE

Some sidechains can be flipped to improve hydrogen bonding and reduce clashes. All (3) such sidechains are listed below:

Mol	Chain	Res	Type
1	A	7	GLN
1	A	336	ASN
1	B	336	ASN

5.3.3 RNA [i](#)

There are no RNA molecules in this entry.

5.4 Non-standard residues in protein, DNA, RNA chains [i](#)

There are no non-standard protein/DNA/RNA residues in this entry.

5.5 Carbohydrates [i](#)

There are no carbohydrates in this entry.

5.6 Ligand geometry [i](#)

Of 21 ligands modelled in this entry, 2 are monoatomic - leaving 19 for Mogul analysis.

In the following table, the Counts columns list the number of bonds (or angles) for which Mogul statistics could be retrieved, the number of bonds (or angles) that are observed in the model and the number of bonds (or angles) that are defined in the Chemical Component Dictionary. The Link column lists molecule types, if any, to which the group is linked. The Z score for a bond length (or angle) is the number of standard deviations the observed value is removed from the expected value. A bond length (or angle) with $|Z| > 2$ is considered an outlier worth inspection. RMSZ is the root-mean-square of all Z scores of the bond lengths (or angles).

Mol	Type	Chain	Res	Link	Bond lengths			Bond angles		
					Counts	RMSZ	# Z > 2	Counts	RMSZ	# Z > 2
8	GOL	B	1004	-	5,5,5	0.43	0	5,5,5	0.35	0
8	GOL	A	1004	-	5,5,5	0.28	0	5,5,5	0.71	0
3	PGE	A	991	-	9,9,9	0.55	0	8,8,8	0.24	0
5	EPE	A	997	-	15,15,15	0.87	1 (6%)	18,20,20	1.85	3 (16%)
8	GOL	A	1003	-	5,5,5	0.36	0	5,5,5	0.28	0
3	PGE	B	992	-	9,9,9	0.46	0	8,8,8	0.20	0
5	EPE	B	998	-	15,15,15	0.91	1 (6%)	18,20,20	1.91	4 (22%)
7	NO3	B	1001	-	1,3,3	3.44	1 (100%)	0,3,3	0.00	-
2	FOR	B	999	-	0,1,1	0.00	-	-	-	-
2	FOR	A	999	-	0,1,1	0.00	-	-	-	-
7	NO3	A	1001	-	1,3,3	3.36	1 (100%)	0,3,3	0.00	-
4	1PE	A	994	-	15,15,15	0.51	0	14,14,14	0.37	0
8	GOL	B	1002	-	5,5,5	0.32	0	5,5,5	0.38	0
8	GOL	B	1003	-	5,5,5	0.33	0	5,5,5	0.46	0
8	GOL	A	1005	-	5,5,5	0.51	0	5,5,5	0.60	0
8	GOL	A	1002	-	5,5,5	0.39	0	5,5,5	0.68	0
3	PGE	B	993	-	9,9,9	0.58	0	8,8,8	0.36	0
5	EPE	A	996	-	15,15,15	1.05	1 (6%)	18,20,20	1.92	4 (22%)
4	1PE	A	995	-	15,15,15	0.53	0	14,14,14	0.20	0

In the following table, the Chirals column lists the number of chiral outliers, the number of chiral

centers analysed, the number of these observed in the model and the number defined in the Chemical Component Dictionary. Similar counts are reported in the Torsion and Rings columns. '-' means no outliers of that kind were identified.

Mol	Type	Chain	Res	Link	Chirals	Torsions	Rings
8	GOL	B	1004	-	-	2/4/4/4	-
8	GOL	A	1004	-	-	3/4/4/4	-
3	PGE	A	991	-	-	6/7/7/7	-
5	EPE	A	997	-	-	6/9/19/19	0/1/1/1
8	GOL	A	1003	-	-	0/4/4/4	-
3	PGE	B	992	-	-	2/7/7/7	-
5	EPE	B	998	-	-	1/9/19/19	0/1/1/1
5	EPE	A	996	-	-	1/9/19/19	0/1/1/1
4	1PE	A	994	-	-	10/13/13/13	-
8	GOL	B	1002	-	-	0/4/4/4	-
8	GOL	B	1003	-	-	2/4/4/4	-
8	GOL	A	1005	-	-	2/4/4/4	-
8	GOL	A	1002	-	-	2/4/4/4	-
3	PGE	B	993	-	-	4/7/7/7	-
4	1PE	A	995	-	-	10/13/13/13	-

All (5) bond length outliers are listed below:

Mol	Chain	Res	Type	Atoms	Z	Observed(Å)	Ideal(Å)
5	A	996	EPE	C10-S	3.65	1.82	1.77
7	B	1001	NO3	O1-N	3.44	1.39	1.24
7	A	1001	NO3	O1-N	3.36	1.39	1.24
5	B	998	EPE	C10-S	3.15	1.82	1.77
5	A	997	EPE	C10-S	2.98	1.81	1.77

All (11) bond angle outliers are listed below:

Mol	Chain	Res	Type	Atoms	Z	Observed(°)	Ideal(°)
5	B	998	EPE	C5-N4-C3	4.87	119.78	108.83
5	A	996	EPE	O1S-S-C10	4.56	112.40	106.92
5	A	996	EPE	C5-N4-C3	4.44	118.82	108.83
5	A	997	EPE	O3S-S-C10	4.38	112.85	105.77
5	A	997	EPE	C5-N4-C3	3.96	117.75	108.83
5	B	998	EPE	O1S-S-C10	3.38	110.99	106.92
5	A	997	EPE	C7-N4-C5	3.19	119.40	111.23
5	A	996	EPE	C7-N4-C5	2.69	118.11	111.23
5	A	996	EPE	C7-N4-C3	2.50	117.62	111.23

Continued on next page...

Continued from previous page...

Mol	Chain	Res	Type	Atoms	Z	Observed(°)	Ideal(°)
5	B	998	EPE	C7-N4-C3	2.34	117.21	111.23
5	B	998	EPE	C7-N4-C5	2.23	116.95	111.23

There are no chirality outliers.

All (51) torsion outliers are listed below:

Mol	Chain	Res	Type	Atoms
8	B	1004	GOL	C1-C2-C3-O3
8	B	1004	GOL	O2-C2-C3-O3
8	A	1004	GOL	O1-C1-C2-C3
5	A	997	EPE	C9-C10-S-O1S
5	A	997	EPE	C9-C10-S-O3S
8	A	1005	GOL	C1-C2-C3-O3
8	A	1005	GOL	O2-C2-C3-O3
8	A	1002	GOL	O1-C1-C2-C3
3	A	991	PGE	O2-C3-C4-O3
4	A	995	1PE	OH4-C13-C23-OH3
4	A	994	1PE	OH4-C13-C23-OH3
3	B	993	PGE	O2-C3-C4-O3
4	A	995	1PE	OH6-C15-C25-OH5
3	B	993	PGE	O1-C1-C2-O2
3	A	991	PGE	O1-C1-C2-O2
3	A	991	PGE	O3-C5-C6-O4
4	A	995	1PE	OH2-C12-C22-OH3
8	B	1003	GOL	O1-C1-C2-C3
4	A	995	1PE	OH5-C14-C24-OH4
8	A	1004	GOL	O1-C1-C2-O2
8	A	1002	GOL	O1-C1-C2-O2
4	A	994	1PE	OH7-C16-C26-OH6
4	A	994	1PE	C24-C14-OH5-C25
4	A	994	1PE	OH2-C12-C22-OH3
5	A	997	EPE	C10-C9-N1-C2
5	A	997	EPE	C10-C9-N1-C6
8	A	1004	GOL	O2-C2-C3-O3
5	B	998	EPE	C8-C7-N4-C3
3	A	991	PGE	C4-C3-O2-C2
4	A	994	1PE	C12-C22-OH3-C23
4	A	994	1PE	C25-C15-OH6-C26
3	B	993	PGE	C4-C3-O2-C2
4	A	995	1PE	C13-C23-OH3-C22
4	A	995	1PE	C24-C14-OH5-C25
8	B	1003	GOL	O1-C1-C2-O2

Continued on next page...

Continued from previous page...

Mol	Chain	Res	Type	Atoms
4	A	995	1PE	C12-C22-OH3-C23
4	A	994	1PE	OH5-C14-C24-OH4
4	A	995	1PE	OH7-C16-C26-OH6
5	A	997	EPE	C9-C10-S-O2S
4	A	995	1PE	C15-C25-OH5-C14
4	A	994	1PE	C23-C13-OH4-C24
5	A	996	EPE	C8-C7-N4-C3
3	B	992	PGE	O3-C5-C6-O4
3	B	992	PGE	C3-C4-O3-C5
3	B	993	PGE	C3-C4-O3-C5
3	A	991	PGE	C1-C2-O2-C3
3	A	991	PGE	C3-C4-O3-C5
4	A	995	1PE	C25-C15-OH6-C26
5	A	997	EPE	N4-C7-C8-O8
4	A	994	1PE	C16-C26-OH6-C15
4	A	994	1PE	OH6-C15-C25-OH5

There are no ring outliers.

12 monomers are involved in 26 short contacts:

Mol	Chain	Res	Type	Clashes	Symm-Clashes
8	A	1004	GOL	1	0
3	A	991	PGE	5	0
8	A	1003	GOL	1	0
3	B	992	PGE	1	0
5	B	998	EPE	1	0
2	B	999	FOR	4	0
4	A	994	1PE	2	0
8	B	1003	GOL	1	0
8	A	1005	GOL	6	0
8	A	1002	GOL	1	0
3	B	993	PGE	1	0
5	A	996	EPE	2	0

5.7 Other polymers [i](#)

There are no such residues in this entry.

5.8 Polymer linkage issues [i](#)

There are no chain breaks in this entry.

6 Fit of model and data

6.1 Protein, DNA and RNA chains

In the following table, the column labelled ‘#RSRZ> 2’ contains the number (and percentage) of RSRZ outliers, followed by percent RSRZ outliers for the chain as percentile scores relative to all X-ray entries and entries of similar resolution. The OWAB column contains the minimum, median, 95th percentile and maximum values of the occupancy-weighted average B-factor per residue. The column labelled ‘Q< 0.9’ lists the number of (and percentage) of residues with an average occupancy less than 0.9.

Mol	Chain	Analysed	<RSRZ>	#RSRZ>2	OWAB(Å ²)	Q<0.9
1	A	531/580 (91%)	0.23	33 (6%) 20 25	18, 27, 38, 44	0
1	B	537/580 (92%)	0.17	20 (3%) 41 48	17, 25, 38, 49	0
All	All	1068/1160 (92%)	0.20	53 (4%) 28 34	17, 26, 38, 49	0

All (53) RSRZ outliers are listed below:

Mol	Chain	Res	Type	RSRZ
1	B	315	TYR	6.2
1	A	318	SER	6.0
1	A	172	VAL	5.7
1	B	314	HIS	5.4
1	A	503	ASP	5.0
1	A	171	ASP	4.3
1	A	504	TYR	3.9
1	B	538	PRO	3.9
1	A	196	GLU	3.8
1	B	313	SER	3.6
1	A	501	THR	3.5
1	B	243	ASP	3.4
1	A	506	PRO	3.4
1	A	489	VAL	3.3
1	B	505	THR	3.2
1	B	506	PRO	3.2
1	B	488	PRO	3.1
1	B	312	LEU	3.0
1	A	488	PRO	3.0
1	A	510	LEU	2.8
1	A	316	ASN	2.8
1	A	500	LEU	2.8
1	A	197	VAL	2.7
1	B	537	LEU	2.7

Continued on next page...

Continued from previous page...

Mol	Chain	Res	Type	RSRZ
1	B	539	LYS	2.6
1	B	58	TYR	2.6
1	B	311	ASP	2.5
1	B	316	ASN	2.5
1	A	194	THR	2.5
1	B	405	GLU	2.5
1	A	305	ARG	2.4
1	A	162	PRO	2.4
1	A	387	ASP	2.4
1	A	508	ASP	2.4
1	A	173	LEU	2.4
1	A	15	GLU	2.3
1	B	258	VAL	2.3
1	A	93	LEU	2.2
1	A	475	PRO	2.2
1	A	257	CYS	2.2
1	A	102	TRP	2.2
1	A	535	PRO	2.2
1	A	502	LYS	2.2
1	A	106	LEU	2.1
1	A	30[A]	GLU	2.1
1	A	258	VAL	2.1
1	A	306	PHE	2.1
1	A	509	SER	2.1
1	B	237	TRP	2.1
1	B	319	THR	2.0
1	B	259	TRP	2.0
1	A	505	THR	2.0
1	B	257	CYS	2.0

6.2 Non-standard residues in protein, DNA, RNA chains [i](#)

There are no non-standard protein/DNA/RNA residues in this entry.

6.3 Carbohydrates [i](#)

There are no carbohydrates in this entry.

6.4 Ligands [i](#)

In the following table, the Atoms column lists the number of modelled atoms in the group and the number defined in the chemical component dictionary. The B-factors column lists the minimum, median, 95th percentile and maximum values of B factors of atoms in the group. The column labelled 'Q< 0.9' lists the number of atoms with occupancy less than 0.9.

Mol	Type	Chain	Res	Atoms	RSCC	RSR	B-factors(Å ²)	Q<0.9
3	PGE	A	991	10/10	0.69	0.22	51,55,58,58	0
6	MG	B	1000	1/1	0.71	0.12	58,58,58,58	0
4	1PE	A	995	16/16	0.76	0.17	56,57,59,59	0
3	PGE	B	993	10/10	0.81	0.26	40,43,45,46	0
8	GOL	A	1002	6/6	0.81	0.21	39,41,41,41	0
4	1PE	A	994	16/16	0.85	0.24	45,48,55,55	0
8	GOL	A	1005	6/6	0.86	0.26	42,44,46,46	0
8	GOL	B	1004	6/6	0.86	0.22	41,43,44,45	0
6	MG	A	1000	1/1	0.87	0.13	47,47,47,47	0
8	GOL	B	1003	6/6	0.91	0.13	33,37,38,40	0
3	PGE	B	992	10/10	0.92	0.19	49,50,51,51	0
5	EPE	A	997	15/15	0.92	0.15	42,44,49,52	0
8	GOL	A	1003	6/6	0.93	0.12	46,47,48,49	0
5	EPE	A	996	15/15	0.94	0.17	31,40,44,44	0
7	NO3	A	1001	4/4	0.95	0.13	37,37,38,38	0
8	GOL	A	1004	6/6	0.95	0.13	25,27,27,28	0
5	EPE	B	998	15/15	0.95	0.17	34,43,47,47	0
7	NO3	B	1001	4/4	0.96	0.17	37,37,37,38	0
2	FOR	A	999	2/2	0.97	0.09	19,19,19,20	0
2	FOR	B	999	2/2	0.97	0.08	20,20,20,21	0
8	GOL	B	1002	6/6	0.98	0.15	24,26,27,29	0

6.5 Other polymers [i](#)

There are no such residues in this entry.