



Full wwPDB X-ray Structure Validation Report ⓘ

Aug 26, 2023 – 10:23 PM EDT

PDB ID : 3ETJ
Title : Crystal structure E. coli Purk in complex with Mg, ADP, and Pi
Authors : Holden, H.M.; Thoden, J.B.
Deposited on : 2008-10-08
Resolution : 1.60 Å(reported)

This is a Full wwPDB X-ray Structure Validation Report for a publicly released PDB entry.

We welcome your comments at validation@mail.wwpdb.org

A user guide is available at

<https://www.wwpdb.org/validation/2017/XrayValidationReportHelp>

with specific help available everywhere you see the ⓘ symbol.

The types of validation reports are described at

<http://www.wwpdb.org/validation/2017/FAQs#types>.

The following versions of software and data (see [references ⓘ](#)) were used in the production of this report:

MolProbity : 4.02b-467
Mogul : 1.8.5 (274361), CSD as541be (2020)
Xtriage (Phenix) : 1.13
EDS : 2.35
buster-report : 1.1.7 (2018)
Percentile statistics : 20191225.v01 (using entries in the PDB archive December 25th 2019)
Refmac : 5.8.0158
CCP4 : 7.0.044 (Gargrove)
Ideal geometry (proteins) : Engh & Huber (2001)
Ideal geometry (DNA, RNA) : Parkinson et al. (1996)
Validation Pipeline (wwPDB-VP) : 2.35

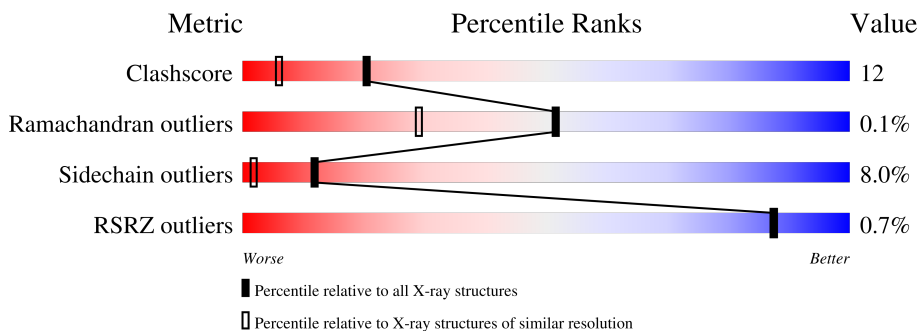
1 Overall quality at a glance

The following experimental techniques were used to determine the structure:

X-RAY DIFFRACTION



The reported resolution of this entry is 1.60 Å.

Percentile scores (ranging between 0-100) for global validation metrics of the entry are shown in the following graphic. The table shows the number of entries on which the scores are based.



Metric	Whole archive (#Entries)	Similar resolution (#Entries, resolution range(Å))
Clashscore	141614	3665 (1.60-1.60)
Ramachandran outliers	138981	3564 (1.60-1.60)
Sidechain outliers	138945	3563 (1.60-1.60)
RSRZ outliers	127900	3321 (1.60-1.60)

The table below summarises the geometric issues observed across the polymeric chains and their fit to the electron density. The red, orange, yellow and green segments of the lower bar indicate the fraction of residues that contain outliers for ≥ 3 , 2, 1 and 0 types of geometric quality criteria respectively. A grey segment represents the fraction of residues that are not modelled. The numeric value for each fraction is indicated below the corresponding segment, with a dot representing fractions $\leq 5\%$. The upper red bar (where present) indicates the fraction of residues that have poor fit to the electron density. The numeric value is given above the bar.

Mol	Chain	Length	Quality of chain
1	A	355	 72% 23% . .
1	B	355	 % 73% 19% 7% ..

The following table lists non-polymeric compounds, carbohydrate monomers and non-standard residues in protein, DNA, RNA chains that are outliers for geometric or electron-density-fit criteria:

Mol	Type	Chain	Res	Chirality	Geometry	Clashes	Electron density
4	PI	B	403	-	X	-	-

2 Entry composition [i](#)

There are 6 unique types of molecules in this entry. The entry contains 6305 atoms, of which 0 are hydrogens and 0 are deuteriums.

In the tables below, the ZeroOcc column contains the number of atoms modelled with zero occupancy, the AltConf column contains the number of residues with at least one atom in alternate conformation and the Trace column contains the number of residues modelled with at most 2 atoms.

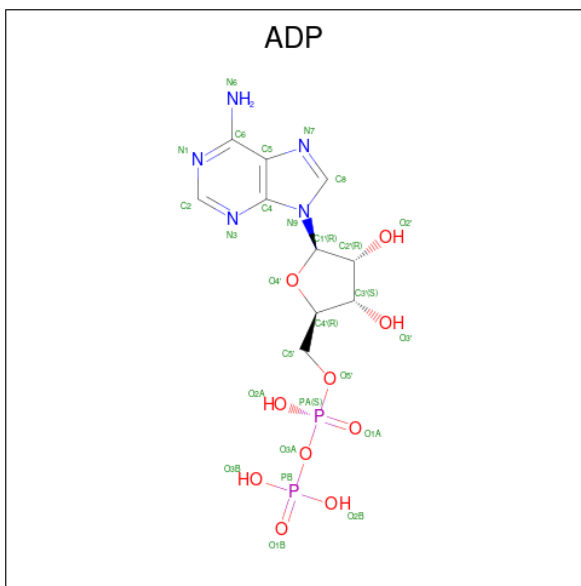
- Molecule 1 is a protein called Phosphoribosylaminoimidazole carboxylase ATPase subunit.

Mol	Chain	Residues	Atoms					ZeroOcc	AltConf	Trace
			Total	C	N	O	S			
1	A	355	Total 2793	C 1777	N 495	O 510	S 11	0	2	0
1	B	351	Total 2762	C 1758	N 491	O 502	S 11	0	3	0

There are 4 discrepancies between the modelled and reference sequences:

Chain	Residue	Modelled	Actual	Comment	Reference
A	61	GLN	GLU	engineered mutation	UNP P09029
A	205	ARG	GLN	engineered mutation	UNP P09029
B	61	GLN	GLU	engineered mutation	UNP P09029
B	205	ARG	GLN	engineered mutation	UNP P09029

- Molecule 2 is ADENOSINE-5'-DIPHOSPHATE (three-letter code: ADP) (formula: $C_{10}H_{15}N_5O_{10}P_2$).

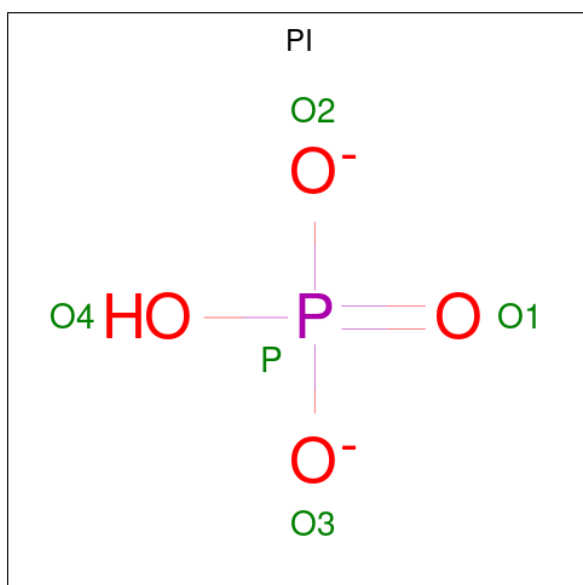


Mol	Chain	Residues	Atoms					ZeroOcc	AltConf
			Total	C	N	O	P		
2	A	1	27	10	5	10	2	0	0
2	B	1	27	10	5	10	2	0	0

- Molecule 3 is MAGNESIUM ION (three-letter code: MG) (formula: Mg).

Mol	Chain	Residues	Atoms		ZeroOcc	AltConf
			Total	Mg		
3	A	2	2	2	0	0
3	B	2	2	2	0	0

- Molecule 4 is HYDROGENPHOSPHATE ION (three-letter code: PI) (formula: HO₄P).



Mol	Chain	Residues	Atoms			ZeroOcc	AltConf
			Total	O	P		
4	A	1	5	4	1	0	0
4	B	1	5	4	1	0	0

- Molecule 5 is CHLORIDE ION (three-letter code: CL) (formula: Cl).

Mol	Chain	Residues	Atoms		ZeroOcc	AltConf
			Total	Cl		
5	A	1	1	1	0	0

- Molecule 6 is water.

Mol	Chain	Residues	Atoms		ZeroOcc	AltConf
6	A	384	Total 384	O 384	0	0
6	B	297	Total 297	O 297	0	0

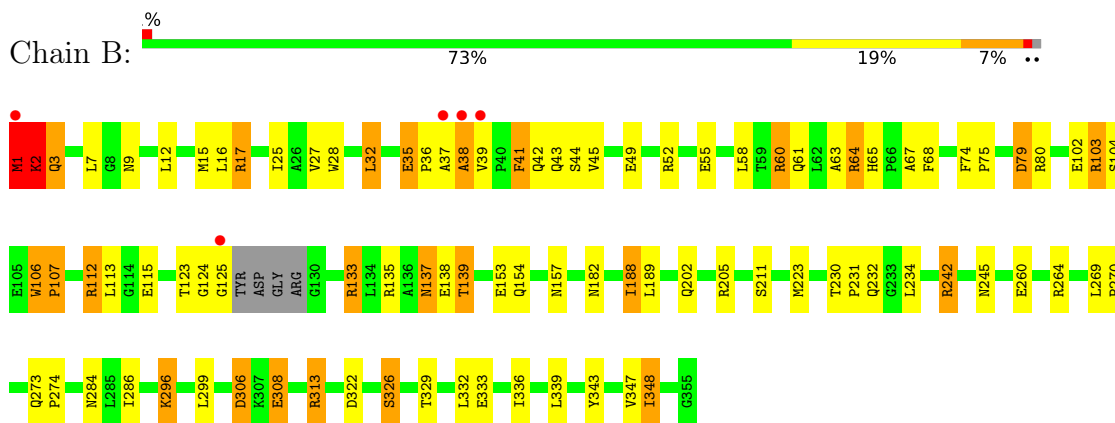
3 Residue-property plots

These plots are drawn for all protein, RNA, DNA and oligosaccharide chains in the entry. The first graphic for a chain summarises the proportions of the various outlier classes displayed in the second graphic. The second graphic shows the sequence view annotated by issues in geometry and electron density. Residues are color-coded according to the number of geometric quality criteria for which they contain at least one outlier: green = 0, yellow = 1, orange = 2 and red = 3 or more. A red dot above a residue indicates a poor fit to the electron density ($RSRZ > 2$). Stretches of 2 or more consecutive residues without any outlier are shown as a green connector. Residues present in the sample, but not in the model, are shown in grey.

- Molecule 1: Phosphoribosylaminoimidazole carboxylase ATPase subunit



- Molecule 1: Phosphoribosylaminoimidazole carboxylase ATPase subunit



4 Data and refinement statistics

Property	Value	Source
Space group	C 1 2 1	Depositor
Cell constants a, b, c, α , β , γ	128.80Å 70.50Å 88.70Å 90.00° 124.30° 90.00°	Depositor
Resolution (Å)	30.00 – 1.60 36.63 – 1.60	Depositor EDS
% Data completeness (in resolution range)	93.6 (30.00-1.60) 93.5 (36.63-1.60)	Depositor EDS
R_{merge}	0.05	Depositor
R_{sym}	0.05	Depositor
$\langle I/\sigma(I) \rangle$ ¹	0.77 (at 1.60Å)	Xtrriage
Refinement program	TNT	Depositor
R, R_{free}	0.158 , 0.215 0.158 , (Not available)	Depositor DCC
R_{free} test set	No test flags present.	wwPDB-VP
Wilson B-factor (Å ²)	15.4	Xtrriage
Anisotropy	0.274	Xtrriage
Bulk solvent k_{sol} (e/Å ³), B_{sol} (Å ²)	0.31 , 99.5	EDS
L-test for twinning ²	$\langle L \rangle = 0.48$, $\langle L^2 \rangle = 0.31$	Xtrriage
Estimated twinning fraction	No twinning to report.	Xtrriage
F_o, F_c correlation	0.98	EDS
Total number of atoms	6305	wwPDB-VP
Average B, all atoms (Å ²)	28.0	wwPDB-VP

Xtrriage's analysis on translational NCS is as follows: *The largest off-origin peak in the Patterson function is 7.50% of the height of the origin peak. No significant pseudotranslation is detected.*

¹Intensities estimated from amplitudes.

²Theoretical values of $\langle |L| \rangle$, $\langle L^2 \rangle$ for acentric reflections are 0.5, 0.333 respectively for untwinned datasets, and 0.375, 0.2 for perfectly twinned datasets.

5 Model quality i

5.1 Standard geometry i

Bond lengths and bond angles in the following residue types are not validated in this section: MG, ADP, CL, PI

The Z score for a bond length (or angle) is the number of standard deviations the observed value is removed from the expected value. A bond length (or angle) with $|Z| > 5$ is considered an outlier worth inspection. RMSZ is the root-mean-square of all Z scores of the bond lengths (or angles).

Mol	Chain	Bond lengths		Bond angles	
		RMSZ	# Z >5	RMSZ	# Z >5
1	A	0.80	0/2871	1.45	27/3912 (0.7%)
1	B	0.80	0/2842	1.47	33/3871 (0.9%)
All	All	0.80	0/5713	1.46	60/7783 (0.8%)

There are no bond length outliers.

All (60) bond angle outliers are listed below:

Mol	Chain	Res	Type	Atoms	Z	Observed(°)	Ideal(°)
1	A	320	LEU	CB-CG-CD2	-11.40	91.62	111.00
1	B	103	ARG	NE-CZ-NH2	-9.65	115.47	120.30
1	B	17	ARG	NE-CZ-NH2	-9.29	115.66	120.30
1	B	242	ARG	NE-CZ-NH1	9.09	124.84	120.30
1	A	235	LEU	CB-CG-CD2	-8.92	95.84	111.00
1	B	103	ARG	NE-CZ-NH1	8.40	124.50	120.30
1	A	269	LEU	CB-CG-CD1	8.25	125.02	111.00
1	B	322	ASP	CB-CG-OD2	8.02	125.51	118.30
1	A	81	LEU	CB-CG-CD1	-7.81	97.73	111.00
1	A	133	ARG	NE-CZ-NH2	-7.59	116.50	120.30
1	A	99	LEU	CB-CG-CD1	-7.48	98.29	111.00
1	A	264	ARG	NE-CZ-NH1	7.44	124.02	120.30
1	B	313	ARG	NE-CZ-NH1	-7.44	116.58	120.30
1	B	45	VAL	N-CA-C	-7.41	91.01	111.00
1	B	80	ARG	NE-CZ-NH2	-7.30	116.65	120.30
1	B	242	ARG	NE-CZ-NH2	-7.26	116.67	120.30
1	A	60	ARG	NE-CZ-NH2	-7.04	116.78	120.30
1	B	133	ARG	NE-CZ-NH1	-6.88	116.86	120.30
1	A	320	LEU	CA-CB-CG	6.88	131.13	115.30
1	B	41	PHE	CB-CA-C	6.78	123.95	110.40
1	A	327	ARG	CB-CA-C	-6.50	97.39	110.40
1	A	80	ARG	NE-CZ-NH1	-6.47	117.06	120.30

Continued on next page...

Continued from previous page...

Mol	Chain	Res	Type	Atoms	Z	Observed(°)	Ideal(°)
1	A	162	VAL	CG1-CB-CG2	6.37	121.08	110.90
1	B	106	TRP	N-CA-C	6.37	128.19	111.00
1	B	339	LEU	CB-CG-CD2	-6.28	100.33	111.00
1	B	299	LEU	CB-CG-CD1	-6.27	100.35	111.00
1	B	1	MET	CA-CB-CG	6.25	123.92	113.30
1	B	264	ARG	NE-CZ-NH2	-6.13	117.23	120.30
1	A	197	GLN	CB-CA-C	-6.13	98.14	110.40
1	A	168	ARG	NE-CZ-NH1	5.91	123.26	120.30
1	B	32	LEU	CB-CG-CD1	-5.86	101.04	111.00
1	B	260	GLU	OE1-CD-OE2	-5.83	116.31	123.30
1	B	211	SER	CB-CA-C	-5.74	99.20	110.10
1	A	153	GLU	OE1-CD-OE2	-5.71	116.45	123.30
1	A	44	SER	CB-CA-C	-5.67	99.32	110.10
1	A	239	LEU	CB-CG-CD1	-5.64	101.41	111.00
1	B	16	LEU	CB-CG-CD2	5.53	120.41	111.00
1	B	79	ASP	CB-CG-OD1	-5.53	113.32	118.30
1	A	102	GLU	CB-CA-C	-5.51	99.38	110.40
1	B	15	MET	CA-CB-CG	-5.50	103.94	113.30
1	B	12	LEU	CB-CG-CD1	-5.50	101.65	111.00
1	B	306	ASP	CB-CG-OD2	-5.45	113.39	118.30
1	A	86	LEU	CB-CG-CD2	-5.39	101.84	111.00
1	A	62	LEU	CB-CG-CD2	5.38	120.15	111.00
1	B	2	LYS	CD-CE-NZ	5.37	124.05	111.70
1	A	264	ARG	NE-CZ-NH2	-5.36	117.62	120.30
1	A	60	ARG	CG-CD-NE	-5.31	100.64	111.80
1	B	348	ILE	CB-CG1-CD1	-5.28	99.12	113.90
1	A	62	LEU	CB-CA-C	-5.22	100.29	110.20
1	B	296	LYS	CD-CE-NZ	5.22	123.70	111.70
1	B	64	ARG	NE-CZ-NH2	-5.18	117.71	120.30
1	B	306	ASP	CB-CG-OD1	-5.15	113.66	118.30
1	A	189	LEU	CB-CG-CD1	5.14	119.74	111.00
1	B	322	ASP	CB-CG-OD1	-5.14	113.68	118.30
1	B	139	THR	OG1-CB-CG2	5.11	121.76	110.00
1	B	139	THR	N-CA-CB	-5.11	100.59	110.30
1	A	133	ARG	NE-CZ-NH1	5.07	122.83	120.30
1	B	223	MET	CG-SD-CE	-5.03	92.14	100.20
1	A	121	ARG	CB-CA-C	-5.02	100.37	110.40
1	A	135	ARG	NE-CZ-NH1	5.01	122.81	120.30

There are no chirality outliers.

There are no planarity outliers.

5.2 Too-close contacts

In the following table, the Non-H and H(model) columns list the number of non-hydrogen atoms and hydrogen atoms in the chain respectively. The H(added) column lists the number of hydrogen atoms added and optimized by MolProbity. The Clashes column lists the number of clashes within the asymmetric unit, whereas Symm-Clashes lists symmetry-related clashes.

Mol	Chain	Non-H	H(model)	H(added)	Clashes	Symm-Clashes
1	A	2793	0	2769	68	1
1	B	2762	0	2747	68	1
2	A	27	0	12	1	0
2	B	27	0	12	1	0
3	A	2	0	0	0	0
3	B	2	0	0	0	0
4	A	5	0	0	1	0
4	B	5	0	0	1	0
5	A	1	0	0	1	0
6	A	384	0	0	3	2
6	B	297	0	0	6	2
All	All	6305	0	5540	138	4

The all-atom clashscore is defined as the number of clashes found per 1000 atoms (including hydrogen atoms). The all-atom clashscore for this structure is 12.

All (138) close contacts within the same asymmetric unit are listed below, sorted by their clash magnitude.

Atom-1	Atom-2	Interatomic distance (Å)	Clash overlap (Å)
1:A:324:ASP:HB3	1:A:327:ARG:HG3	1.21	1.13
1:B:1:MET:HG2	1:B:2:LYS:H	1.11	1.11
1:B:202:GLN:HA	1:B:205:ARG:HH12	1.07	1.11
1:B:135[A]:ARG:HH11	1:B:135[A]:ARG:HG2	1.16	1.05
1:B:202:GLN:HA	1:B:205:ARG:NH1	1.73	1.03
1:B:102:GLU:HG3	1:B:104:SER:HB2	1.51	0.92
1:A:230:THR:HB	1:A:231:PRO:HD2	1.56	0.87
1:B:1:MET:HG2	1:B:2:LYS:N	1.89	0.86
1:B:135[A]:ARG:HG2	1:B:135[A]:ARG:NH1	1.88	0.85
1:B:35:GLU:H	1:B:35:GLU:CD	1.76	0.84
1:B:36:PRO:HG3	1:B:58:LEU:HA	1.61	0.81
1:A:2:LYS:HE3	1:A:267:THR:HB	1.64	0.79
1:A:126:TYR:OH	1:A:129:ARG:NH1	2.16	0.79
1:B:308:GLU:O	1:B:313:ARG:NH1	2.17	0.78
1:B:112:ARG:HG2	1:B:112:ARG:HH11	1.50	0.77
1:B:1:MET:CG	1:B:2:LYS:H	1.90	0.76

Continued on next page...

Continued from previous page...

Atom-1	Atom-2	Interatomic distance (Å)	Clash overlap (Å)
1:B:112:ARG:HH11	1:B:112:ARG:CG	1.98	0.76
1:A:143:PRO:HB3	1:A:145:GLU:OE1	1.87	0.74
1:A:2:LYS:HE2	1:A:269:LEU:HD11	1.71	0.72
1:B:113:LEU:O	1:B:154:GLN:HG3	1.92	0.70
1:A:230:THR:HB	1:A:231:PRO:CD	2.22	0.68
1:A:1:MET:HG2	1:A:2:LYS:O	1.94	0.67
1:A:7:LEU:CD2	1:A:50:ILE:HD11	2.23	0.67
1:B:242:ARG:HB3	6:B:459:HOH:O	1.95	0.66
1:B:326[A]:SER:OG	6:B:653:HOH:O	2.12	0.66
1:A:204:ALA:HB3	6:A:757:HOH:O	1.95	0.65
1:A:230:THR:CB	1:A:231:PRO:HD2	2.27	0.65
1:B:1:MET:CG	1:B:2:LYS:N	2.55	0.65
1:A:324:ASP:OD1	1:A:326:SER:OG	2.15	0.64
1:A:143:PRO:O	1:A:146:CYS:HB2	1.97	0.64
1:A:42:GLN:H	1:A:42:GLN:CD	2.00	0.64
1:B:55:GLU:HG3	6:B:680:HOH:O	1.97	0.64
1:A:73:VAL:HG12	1:A:77:ILE:HD12	1.78	0.64
1:A:73:VAL:CG1	1:A:77:ILE:HD11	2.27	0.64
1:A:110:PHE:CE1	1:A:136:ALA:HA	2.33	0.64
1:A:324:ASP:CG	1:A:326:SER:HG	2.01	0.64
1:A:324:ASP:CB	1:A:327:ARG:HG3	2.12	0.63
1:A:73:VAL:HG12	1:A:77:ILE:CD1	2.29	0.62
1:B:273:GLN:NE2	6:B:521:HOH:O	2.32	0.62
1:B:39:VAL:HG12	1:B:41:PHE:HB3	1.80	0.61
1:B:242:ARG:HD3	6:B:459:HOH:O	1.99	0.61
1:B:188:ILE:C	1:B:188:ILE:HD13	2.21	0.60
1:A:116:LEU:H	1:A:116:LEU:HD23	1.66	0.60
1:B:1:MET:HG2	1:B:2:LYS:HG2	1.83	0.60
1:A:127:ASP:OD1	1:A:314:LYS:NZ	2.34	0.59
1:A:7:LEU:HD23	1:A:50:ILE:HD11	1.85	0.59
1:A:137:ASN:HD22	1:A:138:GLU:HG3	1.68	0.59
1:A:126:TYR:CD2	1:A:126:TYR:N	2.71	0.58
1:A:324:ASP:O	1:A:327:ARG:HB2	2.04	0.58
1:A:73:VAL:CG1	1:A:77:ILE:CD1	2.82	0.58
1:A:17:ARG:HA	1:A:27:VAL:HB	1.85	0.57
1:A:324:ASP:HB3	1:A:327:ARG:CG	2.14	0.57
1:A:116:LEU:HD23	1:A:116:LEU:N	2.18	0.57
1:B:65:HIS:CE1	1:B:67:ALA:HB3	2.41	0.56
1:A:7:LEU:HD21	1:A:50:ILE:HD11	1.86	0.56
1:A:324:ASP:OD1	1:A:327:ARG:N	2.36	0.56
1:A:1:MET:HG2	1:A:2:LYS:N	2.18	0.56

Continued on next page...

Continued from previous page...

Atom-1	Atom-2	Interatomic distance (Å)	Clash overlap (Å)
1:A:230:THR:CB	1:A:231:PRO:CD	2.82	0.56
1:B:188:ILE:HD13	1:B:189:LEU:O	2.05	0.56
1:B:202:GLN:CA	1:B:205:ARG:HH12	1.99	0.55
1:B:17:ARG:HA	1:B:27:VAL:HB	1.89	0.55
1:B:135[A]:ARG:NH1	1:B:135[A]:ARG:CG	2.61	0.55
1:B:137:ASN:OD1	1:B:137:ASN:N	2.38	0.55
1:A:78:ALA:O	1:A:123:THR:HG22	2.07	0.54
1:A:322:ASP:CG	1:A:327:ARG:HD2	2.29	0.53
1:B:55:GLU:OE2	1:B:60:ARG:HG3	2.08	0.53
1:A:2:LYS:HE2	1:A:269:LEU:CD1	2.37	0.53
1:B:3:GLN:CD	1:B:28:TRP:HE1	2.11	0.52
1:B:202:GLN:CG	1:B:205:ARG:HH12	2.22	0.52
1:A:141:GLN:O	1:A:143:PRO:HD3	2.09	0.52
1:A:30:VAL:HG11	1:A:58:LEU:HD21	1.93	0.51
1:B:35:GLU:OE2	1:B:38:ALA:HB3	2.11	0.51
1:A:208:GLU:HB2	6:A:632:HOH:O	2.10	0.50
1:B:124:GLY:O	1:B:125:GLY:O	2.28	0.50
1:B:36:PRO:HB3	1:B:61:GLN:HG3	1.94	0.50
1:B:205:ARG:HD2	1:B:234:LEU:HB2	1.93	0.50
1:B:1:MET:HG2	1:B:2:LYS:CG	2.42	0.49
1:B:188:ILE:HD13	1:B:189:LEU:N	2.27	0.49
1:A:21:GLU:HB3	1:A:22:PRO:HD3	1.94	0.49
1:B:273:GLN:NE2	1:B:274:PRO:HD2	2.28	0.49
2:B:400:ADP:O2B	4:B:403:PI:O4	2.32	0.48
1:A:1:MET:HB2	6:A:532:HOH:O	2.14	0.48
1:A:90:LEU:HB2	1:A:92:LEU:HG	1.96	0.48
1:B:230:THR:HB	1:B:231:PRO:HD2	1.95	0.47
1:A:325:THR:O	1:A:329:THR:HG23	2.13	0.47
1:B:37:ALA:C	1:B:39:VAL:H	2.18	0.47
1:A:39:VAL:HA	1:A:40:PRO:HD3	1.75	0.47
1:A:42:GLN:H	1:A:42:GLN:NE2	2.12	0.47
1:B:55:GLU:OE1	6:B:681:HOH:O	2.20	0.47
1:A:28:TRP:CD1	1:A:28:TRP:N	2.83	0.46
1:A:154:GLN:HE21	1:A:156:ILE:HD13	1.80	0.46
1:B:39:VAL:O	1:B:41:PHE:N	2.42	0.46
1:A:142:LEU:HG	1:A:146:CYS:SG	2.56	0.46
1:A:73:VAL:HG13	1:A:77:ILE:HD11	1.97	0.46
1:B:182:ASN:HB3	1:B:189:LEU:CD1	2.46	0.45
1:B:74:PHE:HB2	1:B:75:PRO:HD3	1.98	0.45
1:A:132:TRP:N	1:A:132:TRP:CE3	2.85	0.45
1:A:176:PHE:O	1:A:273:GLN:NE2	2.37	0.45

Continued on next page...

Continued from previous page...

Atom-1	Atom-2	Interatomic distance (Å)	Clash overlap (Å)
1:A:117:ALA:HB1	1:A:152:VAL:HG21	1.99	0.44
1:A:119:VAL:O	1:A:131:GLN:HA	2.16	0.44
1:A:127:ASP:HB3	1:A:188:ILE:HD12	1.99	0.44
1:B:286:ILE:HA	1:B:313:ARG:O	2.17	0.44
1:A:142:LEU:HA	1:A:143:PRO:HD2	1.93	0.44
1:B:2:LYS:HB3	1:B:25:ILE:HG12	2.00	0.44
1:B:112:ARG:HG2	1:B:112:ARG:NH1	2.26	0.44
1:B:231:PRO:HB2	1:B:232:GLN:NE2	2.32	0.44
1:A:291:ASN:OD1	1:A:293:ASP:HB2	2.18	0.43
1:B:3:GLN:HG2	1:B:44:SER:OG	2.18	0.43
1:B:329:THR:HA	1:B:332:LEU:HD12	2.00	0.43
1:A:221:GLY:HA2	1:A:265:ALA:HB3	1.99	0.43
1:B:188:ILE:CD1	1:B:189:LEU:O	2.67	0.43
1:B:205:ARG:NH1	1:B:205:ARG:HB3	2.34	0.43
1:B:269:LEU:HB3	1:B:270:PRO:CD	2.49	0.42
1:A:243:VAL:HG22	5:A:404:CL:CL	2.56	0.42
1:B:42:GLN:H	1:B:42:GLN:CD	2.22	0.42
1:B:7:LEU:HD11	1:B:32:LEU:HD23	2.01	0.42
1:A:194:ALA:O	1:A:279:PRO:HA	2.20	0.41
1:A:1:MET:HG3	1:A:24:GLY:O	2.20	0.41
1:B:202:GLN:HG3	1:B:205:ARG:HH12	1.86	0.41
1:B:348:ILE:HG21	1:B:348:ILE:HD13	1.60	0.41
1:B:63:ALA:O	1:B:64:ARG:HB2	2.21	0.41
1:B:284:ASN:O	1:B:343:TYR:HE2	2.03	0.41
1:B:2:LYS:HB2	1:B:25:ILE:HA	2.03	0.41
1:A:117:ALA:HB1	1:A:152:VAL:CG2	2.51	0.41
1:B:35:GLU:CD	1:B:35:GLU:N	2.56	0.41
2:A:400:ADP:O2B	4:A:403:PI:O4	2.38	0.41
1:B:39:VAL:HG21	1:B:58:LEU:HD13	2.03	0.41
1:B:205:ARG:HB3	1:B:205:ARG:HH11	1.85	0.41
1:B:336:ILE:HG13	1:B:347:VAL:HG11	2.02	0.41
1:B:79:ASP:HA	1:B:123:THR:HG22	2.03	0.41
1:A:40:PRO:HA	1:A:42:GLN:HE22	1.86	0.40
1:A:182:ASN:HB3	1:A:189:LEU:HD13	2.02	0.40
1:B:106:TRP:HB2	1:B:107:PRO:HD3	2.03	0.40
1:B:308:GLU:N	1:B:313:ARG:HH12	2.19	0.40
1:A:340:PRO:HA	1:A:341:PRO:HD3	1.90	0.40
1:A:190:ARG:CZ	1:A:286:ILE:HD12	2.51	0.40

All (4) symmetry-related close contacts are listed below. The label for Atom-2 includes the symmetry operator and encoded unit-cell translations to be applied.

Atom-1	Atom-2	Interatomic distance (Å)	Clash overlap (Å)
1:A:215:GLN:NE2	6:B:681:HOH:O[3_445]	2.15	0.05
1:B:135[A]:ARG:NH1	6:A:698:HOH:O[4_546]	2.16	0.04
6:B:646:HOH:O	6:B:646:HOH:O[2_657]	2.17	0.03
6:A:753:HOH:O	6:A:753:HOH:O[2_557]	2.19	0.01

5.3 Torsion angles [i](#)

5.3.1 Protein backbone [i](#)

In the following table, the Percentiles column shows the percent Ramachandran outliers of the chain as a percentile score with respect to all X-ray entries followed by that with respect to entries of similar resolution.

The Analysed column shows the number of residues for which the backbone conformation was analysed, and the total number of residues.

Mol	Chain	Analysed	Favoured	Allowed	Outliers	Percentiles	
1	A	355/355 (100%)	348 (98%)	7 (2%)	0	100	100
1	B	350/355 (99%)	343 (98%)	6 (2%)	1 (0%)	41	21
All	All	705/710 (99%)	691 (98%)	13 (2%)	1 (0%)	51	29

All (1) Ramachandran outliers are listed below:

Mol	Chain	Res	Type
1	B	38	ALA

5.3.2 Protein sidechains [i](#)

In the following table, the Percentiles column shows the percent sidechain outliers of the chain as a percentile score with respect to all X-ray entries followed by that with respect to entries of similar resolution.

The Analysed column shows the number of residues for which the sidechain conformation was analysed, and the total number of residues.

Mol	Chain	Analysed	Rotameric	Outliers	Percentiles	
1	A	298/296 (101%)	277 (93%)	21 (7%)	15	3
1	B	296/296 (100%)	268 (90%)	28 (10%)	8	1
All	All	594/592 (100%)	545 (92%)	49 (8%)	12	2

All (49) residues with a non-rotameric sidechain are listed below:

Mol	Chain	Res	Type
1	A	1	MET
1	A	42	GLN
1	A	43	GLN
1	A	49	GLU
1	A	52	ARG
1	A	137	ASN
1	A	140[A]	GLU
1	A	140[B]	GLU
1	A	143	PRO
1	A	145	GLU
1	A	146	CYS
1	A	197	GLN
1	A	215	GLN
1	A	232	GLN
1	A	235	LEU
1	A	245	ASN
1	A	269	LEU
1	A	320	LEU
1	A	323	SER
1	A	326	SER
1	A	327	ARG
1	B	1	MET
1	B	2	LYS
1	B	3	GLN
1	B	9	ASN
1	B	35	GLU
1	B	43	GLN
1	B	49	GLU
1	B	52	ARG
1	B	60	ARG
1	B	68	PHE
1	B	103	ARG
1	B	107	PRO
1	B	112	ARG
1	B	115	GLU
1	B	133	ARG
1	B	137	ASN
1	B	138	GLU
1	B	139	THR
1	B	153	GLU
1	B	157	ASN
1	B	188	ILE

Continued on next page...

Continued from previous page...

Mol	Chain	Res	Type
1	B	245	ASN
1	B	296	LYS
1	B	306	ASP
1	B	308	GLU
1	B	326[A]	SER
1	B	326[B]	SER
1	B	333	GLU

Sometimes sidechains can be flipped to improve hydrogen bonding and reduce clashes. All (12) such sidechains are listed below:

Mol	Chain	Res	Type
1	A	3	GLN
1	A	42	GLN
1	A	43	GLN
1	A	137	ASN
1	A	154	GLN
1	A	182	ASN
1	B	9	ASN
1	B	61	GLN
1	B	141	GLN
1	B	182	ASN
1	B	232	GLN
1	B	273	GLN

5.3.3 RNA [i](#)

There are no RNA molecules in this entry.

5.4 Non-standard residues in protein, DNA, RNA chains [i](#)

There are no non-standard protein/DNA/RNA residues in this entry.

5.5 Carbohydrates [i](#)

There are no monosaccharides in this entry.

5.6 Ligand geometry [i](#)

Of 9 ligands modelled in this entry, 5 are monoatomic - leaving 4 for Mogul analysis.

In the following table, the Counts columns list the number of bonds (or angles) for which Mogul statistics could be retrieved, the number of bonds (or angles) that are observed in the model and the number of bonds (or angles) that are defined in the Chemical Component Dictionary. The Link column lists molecule types, if any, to which the group is linked. The Z score for a bond length (or angle) is the number of standard deviations the observed value is removed from the expected value. A bond length (or angle) with $|Z| > 2$ is considered an outlier worth inspection. RMSZ is the root-mean-square of all Z scores of the bond lengths (or angles).

Mol	Type	Chain	Res	Link	Bond lengths			Bond angles		
					Counts	RMSZ	# Z > 2	Counts	RMSZ	# Z > 2
4	PI	B	403	3	4,4,4	2.39	4 (100%)	6,6,6	1.82	2 (33%)
2	ADP	A	400	3	24,29,29	1.05	3 (12%)	29,45,45	2.01	7 (24%)
4	PI	A	403	3	4,4,4	1.74	2 (50%)	6,6,6	0.72	0
2	ADP	B	400	3	24,29,29	0.89	2 (8%)	29,45,45	2.06	8 (27%)

In the following table, the Chirals column lists the number of chiral outliers, the number of chiral centers analysed, the number of these observed in the model and the number defined in the Chemical Component Dictionary. Similar counts are reported in the Torsion and Rings columns. '-' means no outliers of that kind were identified.

Mol	Type	Chain	Res	Link	Chirals	Torsions	Rings
2	ADP	A	400	3	-	2/12/32/32	0/3/3/3
2	ADP	B	400	3	-	2/12/32/32	0/3/3/3

All (11) bond length outliers are listed below:

Mol	Chain	Res	Type	Atoms	Z	Observed(Å)	Ideal(Å)
4	B	403	PI	P-O4	-2.47	1.47	1.54
2	A	400	ADP	C2-N1	2.46	1.38	1.33
4	B	403	PI	P-O3	-2.42	1.47	1.54
4	B	403	PI	P-O2	-2.38	1.47	1.54
2	A	400	ADP	C6-N6	-2.32	1.25	1.34
4	B	403	PI	P-O1	-2.27	1.45	1.50
4	A	403	PI	P-O3	-2.27	1.47	1.54
2	B	400	ADP	PB-O2B	2.11	1.63	1.54
2	B	400	ADP	C6-N6	-2.08	1.26	1.34
4	A	403	PI	P-O2	-2.05	1.48	1.54
2	A	400	ADP	PB-O2B	2.02	1.62	1.54

All (17) bond angle outliers are listed below:

Mol	Chain	Res	Type	Atoms	Z	Observed(°)	Ideal(°)
2	A	400	ADP	C5-C6-N6	6.36	130.01	120.35

Continued on next page...

Continued from previous page...

Mol	Chain	Res	Type	Atoms	Z	Observed(°)	Ideal(°)
2	B	400	ADP	C5-C6-N6	6.27	129.88	120.35
2	A	400	ADP	N3-C2-N1	-4.22	122.08	128.68
2	B	400	ADP	O4'-C1'-C2'	-4.11	100.93	106.93
2	B	400	ADP	O4'-C4'-C3'	-3.88	97.44	105.11
2	A	400	ADP	N6-C6-N1	-2.89	112.58	118.57
2	A	400	ADP	O4'-C1'-C2'	-2.86	102.74	106.93
4	B	403	PI	O4-P-O1	-2.78	100.74	110.89
4	B	403	PI	O4-P-O3	2.70	116.64	107.97
2	A	400	ADP	C3'-C2'-C1'	2.50	104.75	100.98
2	B	400	ADP	N3-C2-N1	-2.41	124.92	128.68
2	B	400	ADP	O2A-PA-O5'	2.28	118.34	107.75
2	A	400	ADP	C2-N1-C6	2.22	122.56	118.75
2	B	400	ADP	N6-C6-N1	-2.15	114.11	118.57
2	B	400	ADP	O3'-C3'-C2'	2.15	118.77	111.82
2	A	400	ADP	O3'-C3'-C2'	2.06	118.49	111.82
2	B	400	ADP	O2B-PB-O3A	2.03	111.45	104.64

There are no chirality outliers.

All (4) torsion outliers are listed below:

Mol	Chain	Res	Type	Atoms
2	A	400	ADP	PB-O3A-PA-O2A
2	B	400	ADP	PB-O3A-PA-O2A
2	A	400	ADP	PB-O3A-PA-O1A
2	B	400	ADP	PB-O3A-PA-O1A

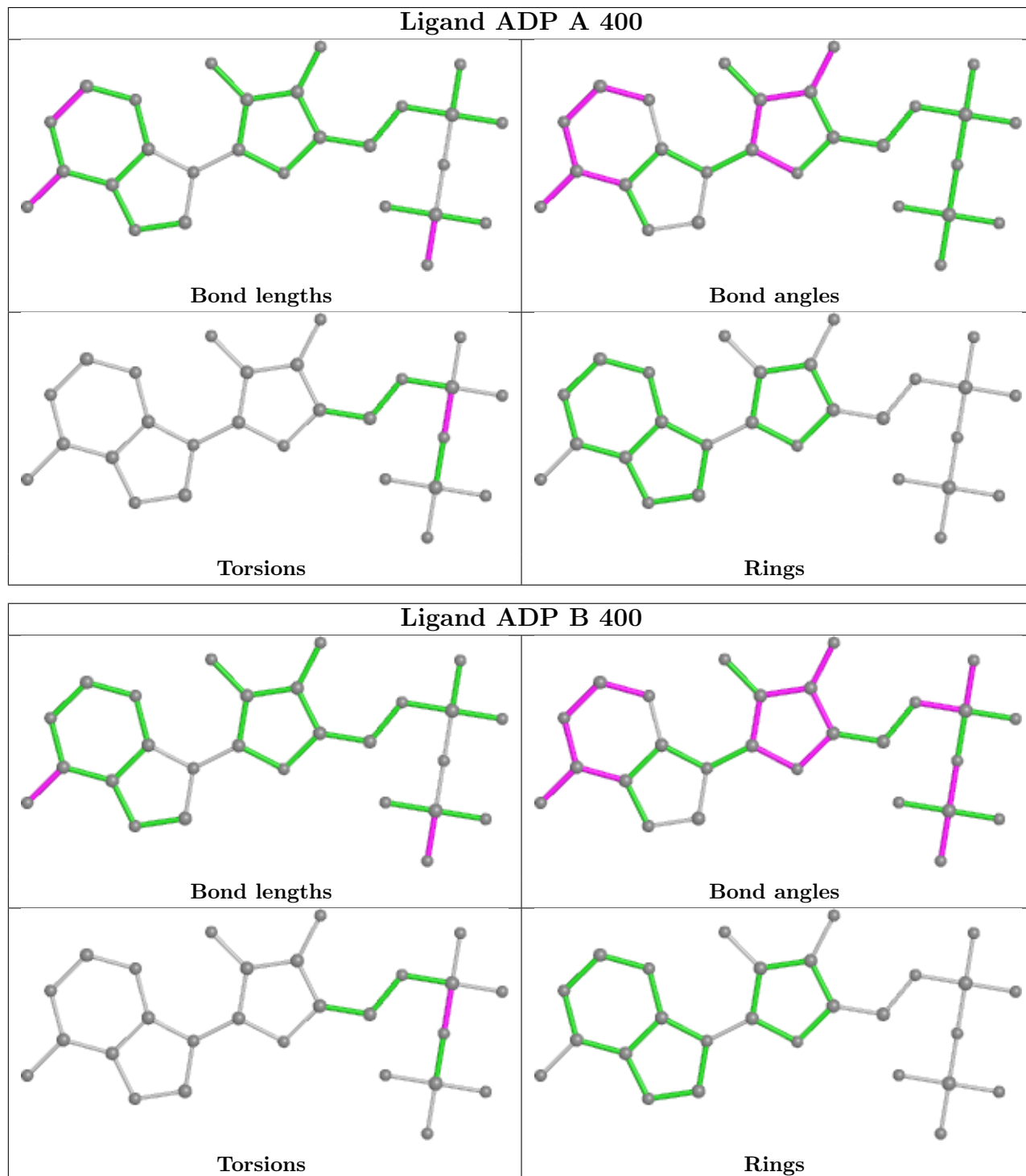
There are no ring outliers.

4 monomers are involved in 2 short contacts:

Mol	Chain	Res	Type	Clashes	Symm-Clashes
4	B	403	PI	1	0
2	A	400	ADP	1	0
4	A	403	PI	1	0
2	B	400	ADP	1	0

The following is a two-dimensional graphical depiction of Mogul quality analysis of bond lengths, bond angles, torsion angles, and ring geometry for all instances of the Ligand of Interest. In addition, ligands with molecular weight > 250 and outliers as shown on the validation Tables will also be included. For torsion angles, if less than 5% of the Mogul distribution of torsion angles is within 10 degrees of the torsion angle in question, then that torsion angle is considered an outlier. Any bond that is central to one or more torsion angles identified as an outlier by Mogul will be highlighted in the graph. For rings, the root-mean-square deviation (RMSD) between the ring

in question and similar rings identified by Mogul is calculated over all ring torsion angles. If the average RMSD is greater than 60 degrees and the minimal RMSD between the ring in question and any Mogul-identified rings is also greater than 60 degrees, then that ring is considered an outlier. The outliers are highlighted in purple. The color gray indicates Mogul did not find sufficient equivalents in the CSD to analyse the geometry.



5.7 Other polymers [i](#)

There are no such residues in this entry.

5.8 Polymer linkage issues [i](#)

There are no chain breaks in this entry.

6 Fit of model and data [i](#)

6.1 Protein, DNA and RNA chains [i](#)

In the following table, the column labelled ‘#RSRZ> 2’ contains the number (and percentage) of RSRZ outliers, followed by percent RSRZ outliers for the chain as percentile scores relative to all X-ray entries and entries of similar resolution. The OWAB column contains the minimum, median, 95th percentile and maximum values of the occupancy-weighted average B-factor per residue. The column labelled ‘Q< 0.9’ lists the number of (and percentage) of residues with an average occupancy less than 0.9.

Mol	Chain	Analysed	<RSRZ>	#RSRZ>2	OWAB(Å ²)	Q<0.9
1	A	355/355 (100%)	-0.69	0 100 100	13, 20, 58, 90	0
1	B	351/355 (98%)	-0.63	5 (1%) 75 75	13, 21, 63, 100	0
All	All	706/710 (99%)	-0.66	5 (0%) 87 87	13, 21, 61, 100	0

All (5) RSRZ outliers are listed below:

Mol	Chain	Res	Type	RSRZ
1	B	125	GLY	4.4
1	B	39	VAL	4.4
1	B	1	MET	4.1
1	B	37	ALA	3.1
1	B	38	ALA	2.0

6.2 Non-standard residues in protein, DNA, RNA chains [i](#)

There are no non-standard protein/DNA/RNA residues in this entry.

6.3 Carbohydrates [i](#)

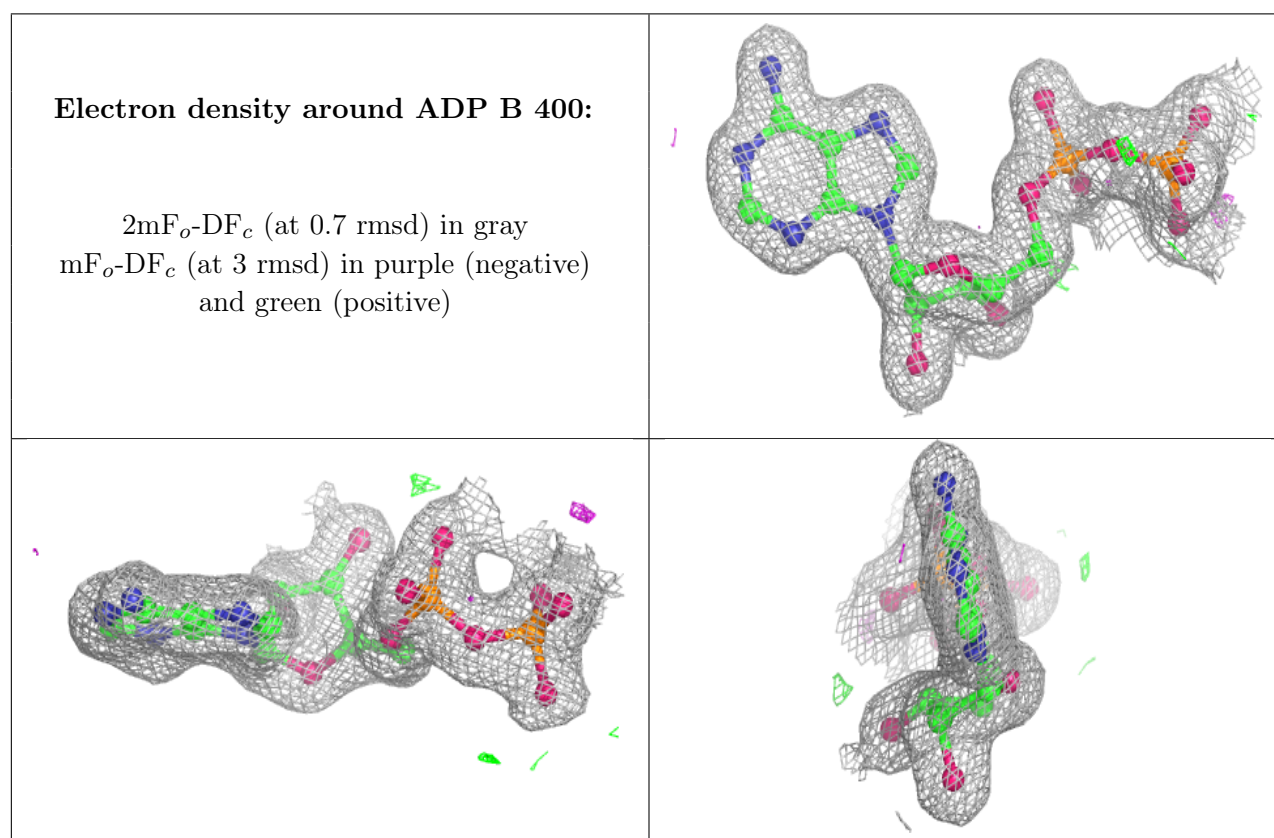
There are no monosaccharides in this entry.

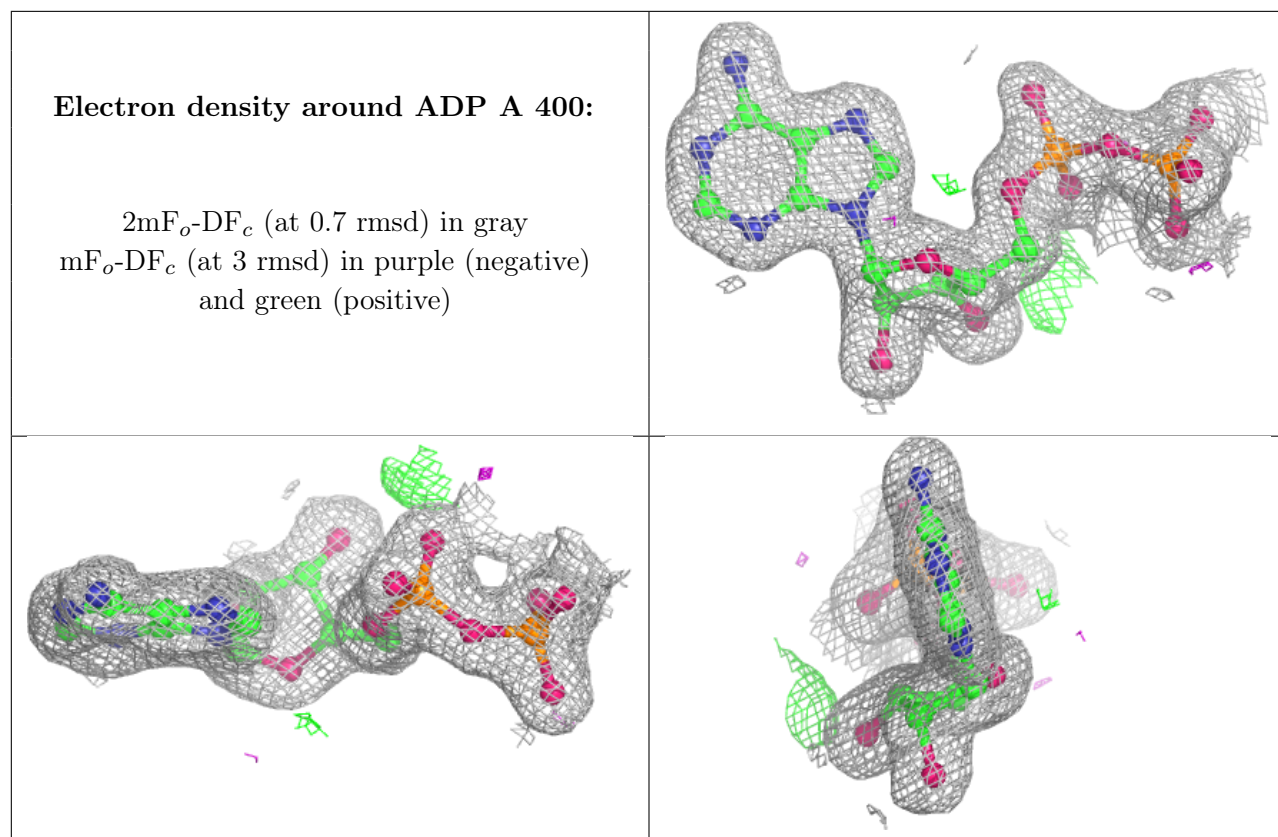
6.4 Ligands [i](#)

In the following table, the Atoms column lists the number of modelled atoms in the group and the number defined in the chemical component dictionary. The B-factors column lists the minimum, median, 95th percentile and maximum values of B factors of atoms in the group. The column labelled ‘Q< 0.9’ lists the number of atoms with occupancy less than 0.9.

Mol	Type	Chain	Res	Atoms	RSCC	RSR	B-factors(\AA^2)	Q<0.9
4	PI	B	403	5/5	0.86	0.11	28,32,37,99	0
2	ADP	B	400	27/27	0.98	0.05	15,21,32,47	0
5	CL	A	404	1/1	0.98	0.08	43,43,43,43	0
3	MG	B	401	1/1	0.99	0.02	17,17,17,17	0
3	MG	B	402	1/1	0.99	0.05	25,25,25,25	0
4	PI	A	403	5/5	0.99	0.04	19,21,27,27	0
2	ADP	A	400	27/27	0.99	0.05	15,19,25,31	0
3	MG	A	402	1/1	0.99	0.02	18,18,18,18	0
3	MG	A	401	1/1	1.00	0.03	15,15,15,15	0

The following is a graphical depiction of the model fit to experimental electron density of all instances of the Ligand of Interest. In addition, ligands with molecular weight > 250 and outliers as shown on the geometry validation Tables will also be included. Each fit is shown from different orientation to approximate a three-dimensional view.





6.5 Other polymers [i](#)

There are no such residues in this entry.