



Full wwPDB X-ray Structure Validation Report ⓘ

Jun 15, 2020 – 10:58 pm BST

PDB ID : 3EU9
Title : The ankyrin repeat domain of Huntingtin interacting protein 14
Authors : Gao, T.; Collins, R.E.; Horton, J.R.; Zhang, R.; Zhang, X.; Cheng, X.
Deposited on : 2008-10-09
Resolution : 1.99 Å(reported)

This is a Full wwPDB X-ray Structure Validation Report for a publicly released PDB entry.

We welcome your comments at validation@mail.wwpdb.org

A user guide is available at

<https://www.wwpdb.org/validation/2017/XrayValidationReportHelp>

with specific help available everywhere you see the ⓘ symbol.

The following versions of software and data (see [references ⓘ](#)) were used in the production of this report:

MolProbity : 4.02b-467
Mogul : 1.8.5 (274361), CSD as541be (2020)
Xtriage (Phenix) : 1.13
EDS : 2.11
Percentile statistics : 20191225.v01 (using entries in the PDB archive December 25th 2019)
Refmac : 5.8.0158
CCP4 : 7.0.044 (Gargrove)
Ideal geometry (proteins) : Engh & Huber (2001)
Ideal geometry (DNA, RNA) : Parkinson et al. (1996)
Validation Pipeline (wwPDB-VP) : 2.11

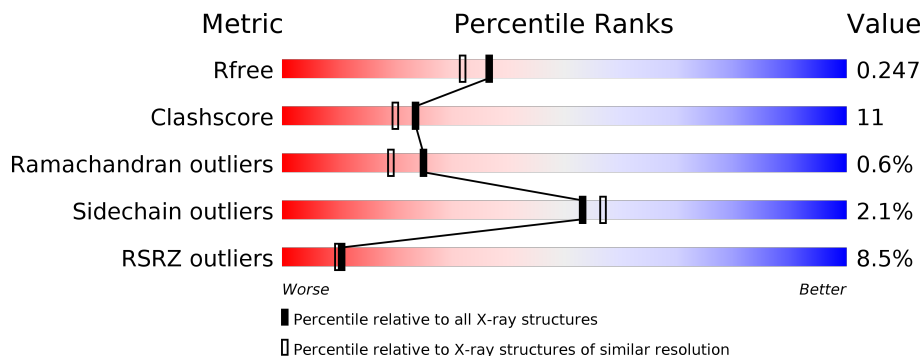
1 Overall quality at a glance i

The following experimental techniques were used to determine the structure:

X-RAY DIFFRACTION

The reported resolution of this entry is 1.99 Å.

Percentile scores (ranging between 0-100) for global validation metrics of the entry are shown in the following graphic. The table shows the number of entries on which the scores are based.



Metric	Whole archive (#Entries)	Similar resolution (#Entries, resolution range(Å))
R_{free}	130704	8085 (2.00-2.00)
Clashscore	141614	9178 (2.00-2.00)
Ramachandran outliers	138981	9054 (2.00-2.00)
Sidechain outliers	138945	9053 (2.00-2.00)
RSRZ outliers	127900	7900 (2.00-2.00)

The table below summarises the geometric issues observed across the polymeric chains and their fit to the electron density. The red, orange, yellow and green segments on the lower bar indicate the fraction of residues that contain outliers for ≥ 3 , 2, 1 and 0 types of geometric quality criteria respectively. A grey segment represents the fraction of residues that are not modelled. The numeric value for each fraction is indicated below the corresponding segment, with a dot representing fractions $\leq 5\%$. The upper red bar (where present) indicates the fraction of residues that have poor fit to the electron density. The numeric value is given above the bar.

Mol	Chain	Length	Quality of chain
1	A	240	<div style="display: flex; align-items: center;"> <div style="width: 6%; height: 10px; background-color: red; margin-right: 5px;"></div> <div style="width: 78%; height: 10px; background-color: green; margin-right: 5px;"></div> <div style="width: 18%; height: 10px; background-color: yellow; margin-right: 5px;"></div> <div style="width: 2%; height: 10px; background-color: grey; margin-right: 5px;"></div> <div style="margin-left: 5px;">••</div> </div>
1	B	240	<div style="display: flex; align-items: center;"> <div style="width: 16%; height: 10px; background-color: red; margin-right: 5px;"></div> <div style="width: 63%; height: 10px; background-color: green; margin-right: 5px;"></div> <div style="width: 31%; height: 10px; background-color: yellow; margin-right: 5px;"></div> <div style="width: 5%; height: 10px; background-color: grey; margin-right: 5px;"></div> <div style="margin-left: 5px;">• 5%</div> </div>
1	C	240	<div style="display: flex; align-items: center;"> <div style="width: 2%; height: 10px; background-color: red; margin-right: 5px;"></div> <div style="width: 78%; height: 10px; background-color: green; margin-right: 5px;"></div> <div style="width: 16%; height: 10px; background-color: yellow; margin-right: 5px;"></div> <div style="width: 6%; height: 10px; background-color: grey; margin-right: 5px;"></div> </div>

The following table lists non-polymeric compounds, carbohydrate monomers and non-standard residues in protein, DNA, RNA chains that are outliers for geometric or electron-density-fit criteria:

Mol	Type	Chain	Res	Chirality	Geometry	Clashes	Electron density
4	GOL	C	449	-	X	-	-
4	GOL	C	450	-	X	-	-

2 Entry composition

There are 5 unique types of molecules in this entry. The entry contains 5620 atoms, of which 0 are hydrogens and 0 are deuteriums.

In the tables below, the ZeroOcc column contains the number of atoms modelled with zero occupancy, the AltConf column contains the number of residues with at least one atom in alternate conformation and the Trace column contains the number of residues modelled with at most 2 atoms.

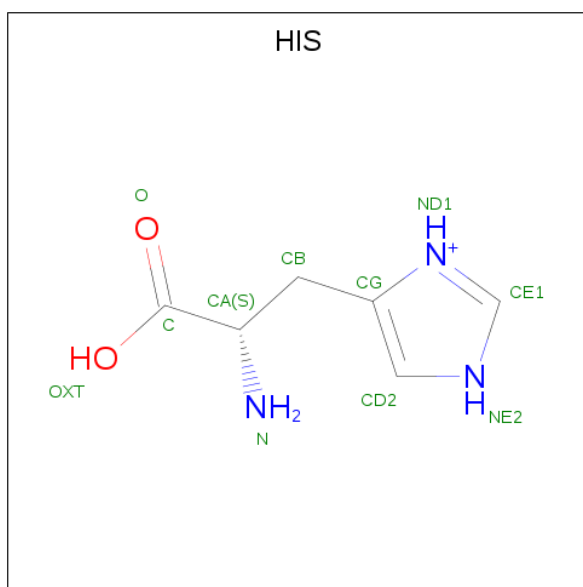
- Molecule 1 is a protein called Huntingtin-interacting protein 14.

Mol	Chain	Residues	Atoms					ZeroOcc	AltConf	Trace
			Total	C	N	O	S			
1	A	232	1775	1119	311	335	10	0	1	0
1	B	227	1696	1069	296	321	10	0	0	0
1	C	226	1750	1106	312	322	10	0	0	0

There are 6 discrepancies between the modelled and reference sequences:

Chain	Residue	Modelled	Actual	Comment	Reference
A	49	HIS	-	expression tag	UNP Q8IUH5
A	50	MET	-	expression tag	UNP Q8IUH5
B	49	HIS	-	expression tag	UNP Q8IUH5
B	50	MET	-	expression tag	UNP Q8IUH5
C	49	HIS	-	expression tag	UNP Q8IUH5
C	50	MET	-	expression tag	UNP Q8IUH5

- Molecule 2 is HISTIDINE (three-letter code: HIS) (formula: C₆H₁₀N₃O₂).



Mol	Chain	Residues	Atoms				ZeroOcc	AltConf
			Total	C	N	O		
2	A	1	10	6	3	1	0	0

- Molecule 3 is SULFATE ION (three-letter code: SO4) (formula: O₄S).



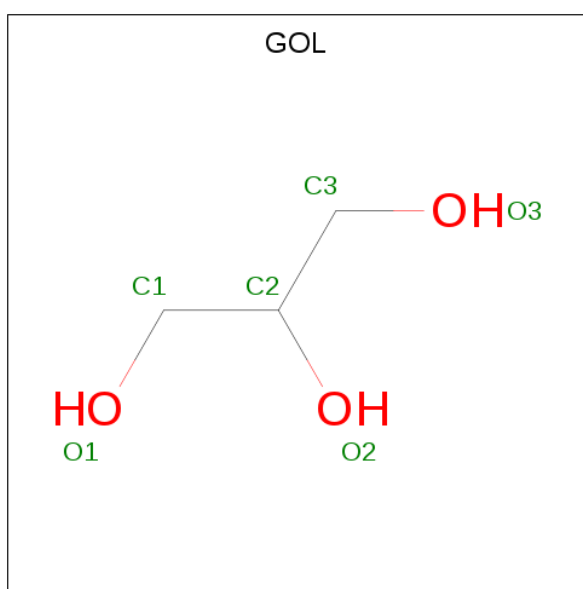
Mol	Chain	Residues	Atoms			ZeroOcc	AltConf
			Total	O	S		
3	A	1	5	4	1	0	0
3	A	1	5	4	1	0	0
3	A	1	5	4	1	0	0

Continued on next page...

Continued from previous page...

Mol	Chain	Residues	Atoms			ZeroOcc	AltConf
3	B	1	Total	O	S	0	0
			5	4	1		
3	B	1	Total	O	S	0	0
			5	4	1		
3	C	1	Total	O	S	0	0
			5	4	1		
3	C	1	Total	O	S	0	0
			5	4	1		

- Molecule 4 is GLYCEROL (three-letter code: GOL) (formula: C₃H₈O₃).



Mol	Chain	Residues	Atoms			ZeroOcc	AltConf
4	C	1	Total	C	O	0	0
			6	3	3		
4	C	1	Total	C	O	0	0
			6	3	3		

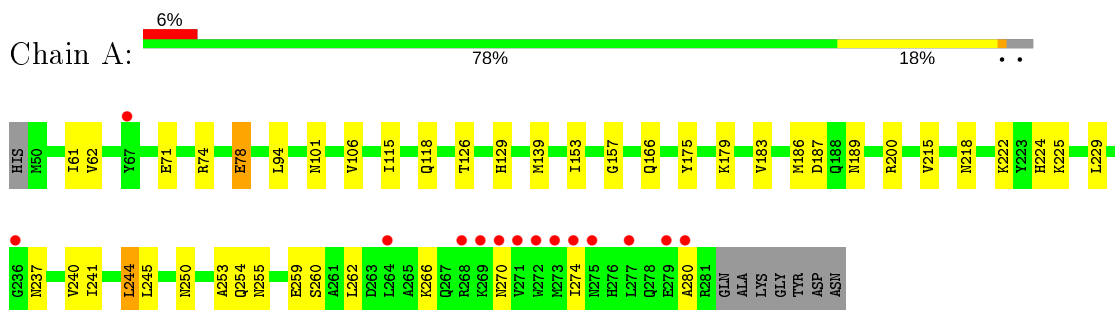
- Molecule 5 is water.

Mol	Chain	Residues	Atoms		ZeroOcc	AltConf
5	A	137	Total	O	0	0
			137	137		
5	B	65	Total	O	0	0
			65	65		
5	C	140	Total	O	0	0
			140	140		

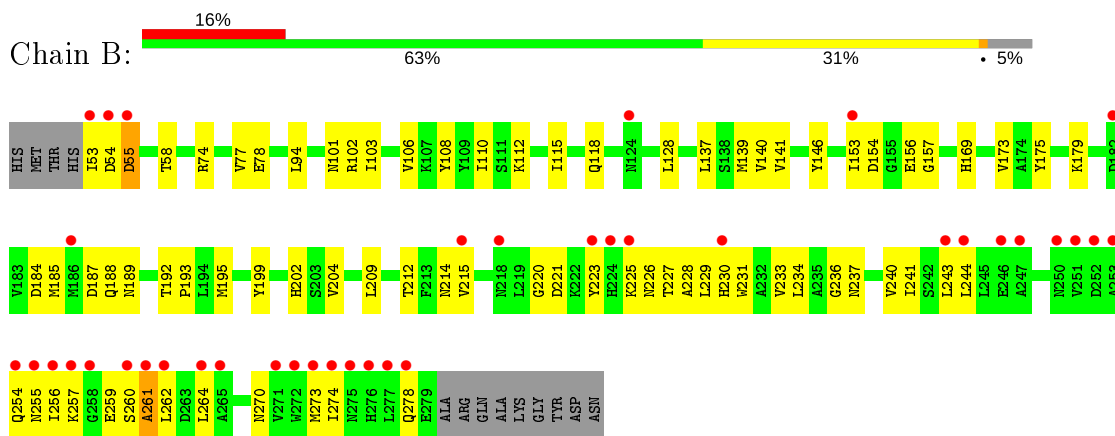
3 Residue-property plots [i](#)

These plots are drawn for all protein, RNA and DNA chains in the entry. The first graphic for a chain summarises the proportions of the various outlier classes displayed in the second graphic. The second graphic shows the sequence view annotated by issues in geometry and electron density. Residues are color-coded according to the number of geometric quality criteria for which they contain at least one outlier: green = 0, yellow = 1, orange = 2 and red = 3 or more. A red dot above a residue indicates a poor fit to the electron density ($RSRZ > 2$). Stretches of 2 or more consecutive residues without any outlier are shown as a green connector. Residues present in the sample, but not in the model, are shown in grey.

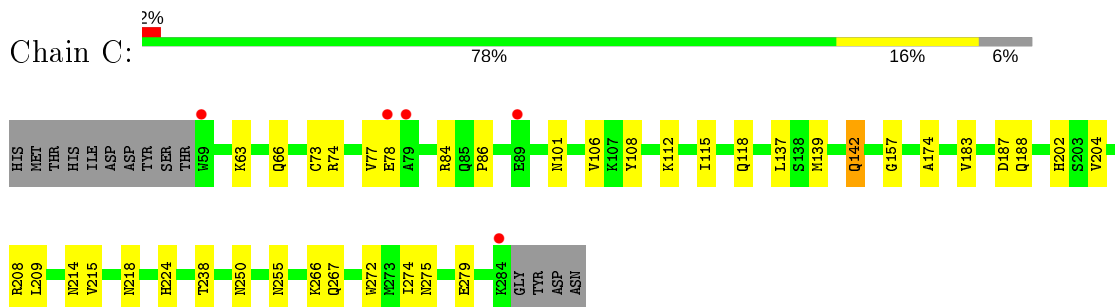
- Molecule 1: Huntingtin-interacting protein 14



- Molecule 1: Huntingtin-interacting protein 14



- Molecule 1: Huntingtin-interacting protein 14



4 Data and refinement statistics

Property	Value	Source
Space group	P 61 2 2	Depositor
Cell constants a, b, c, α , β , γ	106.66Å 106.66Å 255.53Å 90.00° 90.00° 120.00°	Depositor
Resolution (Å)	34.27 – 1.99 34.27 – 1.99	Depositor EDS
% Data completeness (in resolution range)	97.5 (34.27-1.99) 97.6 (34.27-1.99)	Depositor EDS
R_{merge}	0.08	Depositor
R_{sym}	(Not available)	Depositor
$\langle I/\sigma(I) \rangle$ ¹	4.05 (at 2.00Å)	Xtrriage
Refinement program	CNS 1.1	Depositor
R, R_{free}	0.222 , 0.251 0.219 , 0.247	Depositor DCC
R_{free} test set	3004 reflections (5.05%)	wwPDB-VP
Wilson B-factor (Å ²)	32.3	Xtrriage
Anisotropy	0.029	Xtrriage
Bulk solvent k_{sol} (e/Å ³), B_{sol} (Å ²)	0.35 , 55.6	EDS
L-test for twinning ²	$\langle L \rangle = 0.49$, $\langle L^2 \rangle = 0.32$	Xtrriage
Estimated twinning fraction	No twinning to report.	Xtrriage
F_o, F_c correlation	0.94	EDS
Total number of atoms	5620	wwPDB-VP
Average B, all atoms (Å ²)	40.0	wwPDB-VP

Xtrriage's analysis on translational NCS is as follows: *The largest off-origin peak in the Patterson function is 2.56% of the height of the origin peak. No significant pseudotranslation is detected.*

¹Intensities estimated from amplitudes.

²Theoretical values of $\langle |L| \rangle$, $\langle L^2 \rangle$ for acentric reflections are 0.5, 0.333 respectively for untwinned datasets, and 0.375, 0.2 for perfectly twinned datasets.

5 Model quality [i](#)

5.1 Standard geometry [i](#)

Bond lengths and bond angles in the following residue types are not validated in this section: GOL, SO4

The Z score for a bond length (or angle) is the number of standard deviations the observed value is removed from the expected value. A bond length (or angle) with $|Z| > 5$ is considered an outlier worth inspection. RMSZ is the root-mean-square of all Z scores of the bond lengths (or angles).

Mol	Chain	Bond lengths		Bond angles	
		RMSZ	# Z >5	RMSZ	# Z >5
1	A	0.30	0/1811	0.55	0/2469
1	B	0.26	0/1731	0.47	0/2365
1	C	0.31	0/1786	0.56	0/2430
All	All	0.29	0/5328	0.53	0/7264

There are no bond length outliers.

There are no bond angle outliers.

There are no chirality outliers.

There are no planarity outliers.

5.2 Too-close contacts [i](#)

In the following table, the Non-H and H(model) columns list the number of non-hydrogen atoms and hydrogen atoms in the chain respectively. The H(added) column lists the number of hydrogen atoms added and optimized by MolProbity. The Clashes column lists the number of clashes within the asymmetric unit, whereas Symm-Clashes lists symmetry related clashes.

Mol	Chain	Non-H	H(model)	H(added)	Clashes	Symm-Clashes
1	A	1775	0	1707	28	0
1	B	1696	0	1588	63	0
1	C	1750	0	1723	30	0
2	A	10	0	6	1	0
3	A	15	0	0	0	0
3	B	10	0	0	0	0
3	C	10	0	0	0	0
4	C	12	0	8	0	0
5	A	137	0	0	2	0
5	B	65	0	0	0	0

Continued on next page...

Continued from previous page...

Mol	Chain	Non-H	H(model)	H(added)	Clashes	Symm-Clashes
5	C	140	0	0	4	0
All	All	5620	0	5032	115	0

The all-atom clashscore is defined as the number of clashes found per 1000 atoms (including hydrogen atoms). The all-atom clashscore for this structure is 11.

All (115) close contacts within the same asymmetric unit are listed below, sorted by their clash magnitude.

Atom-1	Atom-2	Interatomic distance (Å)	Clash overlap (Å)
1:A:218:ASN:HD21	1:A:250:ASN:H	1.12	0.94
1:B:53:ILE:HG13	1:B:54:ASP:H	1.41	0.86
1:B:153:ILE:HD13	1:B:188:GLN:HG2	1.64	0.80
1:B:192:THR:HG22	1:B:195:MET:HG3	1.66	0.78
1:B:192:THR:N	1:B:195:MET:HE3	1.99	0.78
1:B:192:THR:H	1:B:195:MET:HE3	1.49	0.76
1:B:53:ILE:HG22	1:C:238:THR:HB	1.66	0.76
1:C:218:ASN:HD21	1:C:250:ASN:H	1.35	0.75
1:A:218:ASN:ND2	1:A:250:ASN:H	1.84	0.73
1:A:126:THR:H	1:A:129:HIS:HD2	1.37	0.72
1:B:53:ILE:HG22	1:C:238:THR:CB	2.19	0.72
1:A:240:VAL:HG12	1:A:244:LEU:HD22	1.73	0.70
1:A:262:LEU:HG	1:A:266:LYS:HE3	1.72	0.70
1:B:264:LEU:HD12	1:B:264:LEU:H	1.57	0.70
1:B:157:GLY:O	1:B:187:ASP:HB2	1.94	0.67
1:A:126:THR:H	1:A:129:HIS:CD2	2.12	0.67
1:C:218:ASN:ND2	1:C:250:ASN:H	1.96	0.63
1:B:77:VAL:HG21	1:B:108:TYR:CE2	2.34	0.62
1:A:71:GLU:CD	1:A:71:GLU:H	2.04	0.60
1:A:270:ASN:O	1:A:274:ILE:HG13	2.01	0.60
1:A:218:ASN:HD21	1:A:250:ASN:N	1.92	0.60
1:C:275:ASN:O	1:C:279:GLU:HG3	2.02	0.60
1:C:183:VAL:HG22	1:C:215:VAL:HG12	1.83	0.59
1:A:183:VAL:HG22	1:A:215:VAL:HG22	1.85	0.58
1:B:264:LEU:N	1:B:264:LEU:HD12	2.18	0.58
1:B:236:GLY:HA2	1:B:273:MET:HE1	1.85	0.58
1:B:77:VAL:HG21	1:B:108:TYR:HE2	1.69	0.58
1:A:189:ASN:OD1	2:A:322:HIS:N	2.38	0.57
1:A:245:LEU:HD13	1:A:280:ALA:HB2	1.86	0.57
1:B:274:ILE:O	1:B:278:GLN:HB2	2.06	0.56
1:B:53:ILE:HG23	1:C:272:TRP:CD2	2.41	0.56
1:B:229:LEU:O	1:B:233:VAL:HG23	2.05	0.55

Continued on next page...

Continued from previous page...

Atom-1	Atom-2	Interatomic distance (Å)	Clash overlap (Å)
1:B:115:ILE:HB	1:B:118:GLN:HB2	1.87	0.55
1:A:115:ILE:HB	1:A:118:GLN:HB2	1.88	0.54
1:B:153:ILE:CG2	1:B:157:GLY:HA2	2.38	0.54
1:A:74:ARG:HG2	1:A:78:GLU:OE1	2.09	0.52
1:C:73:CYS:O	1:C:77:VAL:HG23	2.10	0.52
1:B:110:ILE:HD12	1:B:146:TYR:CD1	2.44	0.52
1:B:199:TYR:HB2	1:B:231:TRP:HB3	1.91	0.52
1:B:234:LEU:HD21	1:B:264:LEU:HD23	1.92	0.52
1:B:106:VAL:HG21	1:B:139:MET:SD	2.50	0.52
1:A:166:GLN:HE21	1:A:200:ARG:NH1	2.07	0.51
1:B:221:ASP:O	1:B:225:LYS:HA	2.10	0.51
1:B:237:ASN:O	1:B:241:ILE:HG12	2.11	0.51
1:A:222:LYS:HD2	5:A:412:HOH:O	2.11	0.51
1:C:202:HIS:HE1	5:C:525:HOH:O	1.93	0.51
1:B:264:LEU:H	1:B:264:LEU:CD1	2.22	0.51
1:C:183:VAL:CG2	1:C:215:VAL:HG12	2.41	0.51
1:B:53:ILE:HG13	1:B:54:ASP:N	2.20	0.50
1:B:202:HIS:HA	1:B:237:ASN:ND2	2.27	0.50
1:A:153:ILE:HD12	5:A:372:HOH:O	2.11	0.50
1:B:202:HIS:HA	1:B:237:ASN:HD21	1.76	0.50
1:B:255:ASN:C	1:B:257:LYS:H	2.14	0.50
1:B:175:TYR:O	1:B:179:LYS:HG2	2.12	0.49
1:B:53:ILE:HA	1:C:238:THR:HG21	1.94	0.49
1:B:128:LEU:HD11	1:B:140:VAL:HG13	1.95	0.49
1:B:270:ASN:O	1:B:274:ILE:HG13	2.13	0.49
1:C:183:VAL:HG22	1:C:215:VAL:CG1	2.42	0.49
1:C:63:LYS:HD3	1:C:66:GLN:NE2	2.28	0.48
1:A:61:ILE:HG23	1:A:62:VAL:N	2.28	0.47
1:C:188:GLN:HG3	5:C:574:HOH:O	2.13	0.47
1:A:224:HIS:O	1:A:255:ASN:HB2	2.14	0.47
1:B:187:ASP:C	1:B:189:ASN:H	2.17	0.47
1:C:218:ASN:HD21	1:C:250:ASN:N	2.07	0.47
1:B:102:ARG:O	1:B:106:VAL:HG23	2.15	0.47
1:C:157:GLY:O	1:C:187:ASP:HB2	2.15	0.47
1:C:74:ARG:O	1:C:78:GLU:HG3	2.14	0.47
1:C:84:ARG:O	1:C:86:PRO:HD3	2.15	0.47
1:C:108:TYR:O	1:C:112:LYS:HG2	2.15	0.46
1:A:186:MET:SD	1:A:222:LYS:HE3	2.54	0.46
1:B:227:THR:HB	1:B:230:HIS:ND1	2.29	0.46
1:B:227:THR:HG22	1:B:228:ALA:N	2.31	0.46
1:A:175:TYR:O	1:A:179:LYS:HG2	2.16	0.46

Continued on next page...

Continued from previous page...

Atom-1	Atom-2	Interatomic distance (Å)	Clash overlap (Å)
1:B:103:ILE:HD13	1:B:139:MET:CE	2.46	0.46
1:B:185:MET:O	1:B:193:PRO:HD3	2.15	0.46
1:C:106:VAL:HG21	1:C:139:MET:SD	2.55	0.46
1:A:157:GLY:O	1:A:187:ASP:HB2	2.15	0.45
1:B:153:ILE:HG21	1:B:157:GLY:HA2	1.97	0.45
1:B:55:ASP:OD2	1:B:58:THR:HG23	2.17	0.45
1:B:209:LEU:O	1:B:212:THR:HB	2.15	0.45
1:B:260:SER:O	1:B:262:LEU:N	2.50	0.44
1:B:154:ASP:OD1	1:B:156:GLU:N	2.45	0.44
1:B:77:VAL:HG21	1:B:108:TYR:OH	2.17	0.44
1:B:240:VAL:O	1:B:244:LEU:HD13	2.18	0.44
1:B:204:VAL:HA	1:B:243:LEU:HD11	1.99	0.44
1:A:166:GLN:HB2	1:A:200:ARG:HD3	2.00	0.43
1:B:77:VAL:CG2	1:B:108:TYR:OH	2.67	0.43
1:C:267:GLN:HG3	5:C:543:HOH:O	2.18	0.43
1:A:224:HIS:O	1:A:225:LYS:HB2	2.19	0.43
1:A:106:VAL:HG21	1:A:139:MET:SD	2.59	0.42
1:B:184:ASP:OD1	1:B:215:VAL:HG23	2.19	0.42
1:B:54:ASP:O	1:B:55:ASP:HB3	2.19	0.42
1:B:254:GLN:HA	1:B:259:GLU:O	2.20	0.42
1:B:261:ALA:HA	1:B:264:LEU:HD13	2.01	0.42
1:B:137:LEU:O	1:B:141:VAL:HG23	2.19	0.42
1:C:224:HIS:O	1:C:255:ASN:HB2	2.19	0.42
1:C:115:ILE:HB	1:C:118:GLN:HB2	2.00	0.42
1:B:108:TYR:OH	1:B:112:LYS:HE3	2.20	0.42
1:C:266:LYS:HA	1:C:274:ILE:HD11	2.01	0.41
1:B:53:ILE:HG22	1:C:238:THR:CG2	2.50	0.41
1:B:106:VAL:O	1:B:110:ILE:HG13	2.19	0.41
1:A:237:ASN:O	1:A:241:ILE:HG13	2.21	0.41
1:B:74:ARG:O	1:B:77:VAL:HG22	2.21	0.41
1:A:253:ALA:O	1:A:260:SER:HA	2.21	0.41
1:B:212:THR:C	1:B:214:ASN:H	2.23	0.41
1:B:53:ILE:HG23	1:C:272:TRP:CE2	2.56	0.41
1:C:142:GLN:HA	1:C:142:GLN:HE21	1.85	0.41
1:C:174:ALA:HB2	1:C:209:LEU:HD21	2.03	0.41
1:A:254:GLN:HA	1:A:259:GLU:O	2.20	0.41
1:B:254:GLN:HA	1:B:260:SER:HA	2.03	0.41
1:C:84:ARG:HD2	5:C:578:HOH:O	2.21	0.41
1:B:169:HIS:O	1:B:173:VAL:HG23	2.21	0.40
1:B:220:GLY:HA2	1:B:226:ASN:O	2.21	0.40
1:B:77:VAL:HG23	1:B:78:GLU:N	2.37	0.40

Continued on next page...

Continued from previous page...

Atom-1	Atom-2	Interatomic distance (Å)	Clash overlap (Å)
1:C:204:VAL:HG11	1:C:208:ARG:NH1	2.37	0.40

There are no symmetry-related clashes.

5.3 Torsion angles [i](#)

5.3.1 Protein backbone [i](#)

In the following table, the Percentiles column shows the percent Ramachandran outliers of the chain as a percentile score with respect to all X-ray entries followed by that with respect to entries of similar resolution.

The Analysed column shows the number of residues for which the backbone conformation was analysed, and the total number of residues.

Mol	Chain	Analysed	Favoured	Allowed	Outliers	Percentiles	
1	A	231/240 (96%)	227 (98%)	4 (2%)	0	100	100
1	B	225/240 (94%)	202 (90%)	19 (8%)	4 (2%)	8	3
1	C	224/240 (93%)	220 (98%)	4 (2%)	0	100	100
All	All	680/720 (94%)	649 (95%)	27 (4%)	4 (1%)	25	19

All (4) Ramachandran outliers are listed below:

Mol	Chain	Res	Type
1	B	223	TYR
1	B	261	ALA
1	B	55	ASP
1	B	256	ILE

5.3.2 Protein sidechains [i](#)

In the following table, the Percentiles column shows the percent sidechain outliers of the chain as a percentile score with respect to all X-ray entries followed by that with respect to entries of similar resolution.

The Analysed column shows the number of residues for which the sidechain conformation was analysed, and the total number of residues.

Mol	Chain	Analysed	Rotameric	Outliers	Percentiles	
1	A	182/200 (91%)	177 (97%)	5 (3%)	44	46
1	B	167/200 (84%)	165 (99%)	2 (1%)	71	76
1	C	182/200 (91%)	178 (98%)	4 (2%)	52	55
All	All	531/600 (88%)	520 (98%)	11 (2%)	53	57

All (11) residues with a non-rotameric sidechain are listed below:

Mol	Chain	Res	Type
1	A	78	GLU
1	A	94	LEU
1	A	101	ASN
1	A	229	LEU
1	A	244	LEU
1	B	94	LEU
1	B	101	ASN
1	C	101	ASN
1	C	137	LEU
1	C	142	GLN
1	C	214	ASN

Some sidechains can be flipped to improve hydrogen bonding and reduce clashes. All (23) such sidechains are listed below:

Mol	Chain	Res	Type
1	A	66	GLN
1	A	90	ASN
1	A	101	ASN
1	A	118	GLN
1	A	129	HIS
1	A	166	GLN
1	A	189	ASN
1	A	218	ASN
1	B	66	GLN
1	B	90	ASN
1	B	101	ASN
1	B	118	GLN
1	B	134	GLN
1	B	136	HIS
1	B	275	ASN
1	C	66	GLN
1	C	101	ASN
1	C	118	GLN

Continued on next page...

Continued from previous page...

Mol	Chain	Res	Type
1	C	134	GLN
1	C	202	HIS
1	C	214	ASN
1	C	218	ASN
1	C	275	ASN

5.3.3 RNA [i](#)

There are no RNA molecules in this entry.

5.4 Non-standard residues in protein, DNA, RNA chains [i](#)

There are no non-standard protein/DNA/RNA residues in this entry.

5.5 Carbohydrates [i](#)

There are no carbohydrates in this entry.

5.6 Ligand geometry [i](#)

10 ligands are modelled in this entry.

In the following table, the Counts columns list the number of bonds (or angles) for which Mogul statistics could be retrieved, the number of bonds (or angles) that are observed in the model and the number of bonds (or angles) that are defined in the Chemical Component Dictionary. The Link column lists molecule types, if any, to which the group is linked. The Z score for a bond length (or angle) is the number of standard deviations the observed value is removed from the expected value. A bond length (or angle) with $|Z| > 2$ is considered an outlier worth inspection. RMSZ is the root-mean-square of all Z scores of the bond lengths (or angles).

Mol	Type	Chain	Res	Link	Bond lengths			Bond angles		
					Counts	RMSZ	$\# Z > 2$	Counts	RMSZ	$\# Z > 2$
3	SO4	C	452	-	4,4,4	0.24	0	6,6,6	0.06	0
3	SO4	B	323	-	4,4,4	0.25	0	6,6,6	0.06	0
3	SO4	A	325	-	4,4,4	0.23	0	6,6,6	0.06	0
3	SO4	C	451	-	4,4,4	0.24	0	6,6,6	0.06	0
3	SO4	A	324	-	4,4,4	0.27	0	6,6,6	0.05	0
4	GOL	C	449	-	5,5,5	4.51	5 (100%)	5,5,5	5.70	3 (60%)
3	SO4	A	323	-	4,4,4	0.23	0	6,6,6	0.10	0
4	GOL	C	450	-	5,5,5	4.56	5 (100%)	5,5,5	5.71	3 (60%)
3	SO4	B	322	-	4,4,4	0.26	0	6,6,6	0.06	0

In the following table, the Chirals column lists the number of chiral outliers, the number of chiral centers analysed, the number of these observed in the model and the number defined in the Chemical Component Dictionary. Similar counts are reported in the Torsion and Rings columns. '-' means no outliers of that kind were identified.

Mol	Type	Chain	Res	Link	Chirals	Torsions	Rings
4	GOL	C	450	-	-	4/4/4/4	-
4	GOL	C	449	-	-	3/4/4/4	-

All (10) bond length outliers are listed below:

Mol	Chain	Res	Type	Atoms	Z	Observed(Å)	Ideal(Å)
4	C	450	GOL	C3-C2	-7.59	1.20	1.51
4	C	449	GOL	C3-C2	-7.32	1.21	1.51
4	C	449	GOL	O1-C1	4.60	1.61	1.42
4	C	450	GOL	O1-C1	4.59	1.61	1.42
4	C	449	GOL	O3-C3	3.44	1.56	1.42
4	C	450	GOL	O3-C3	3.18	1.55	1.42
4	C	449	GOL	O2-C2	-2.81	1.35	1.43
4	C	450	GOL	O2-C2	-2.78	1.35	1.43
4	C	450	GOL	C1-C2	-2.70	1.40	1.51
4	C	449	GOL	C1-C2	-2.69	1.40	1.51

All (6) bond angle outliers are listed below:

Mol	Chain	Res	Type	Atoms	Z	Observed(°)	Ideal(°)
4	C	449	GOL	O3-C3-C2	10.43	160.23	110.20
4	C	450	GOL	O3-C3-C2	10.43	160.23	110.20
4	C	449	GOL	O2-C2-C3	6.48	137.66	109.12
4	C	450	GOL	O2-C2-C3	6.48	137.65	109.12
4	C	450	GOL	O1-C1-C2	3.39	126.48	110.20
4	C	449	GOL	O1-C1-C2	3.28	125.93	110.20

There are no chirality outliers.

All (7) torsion outliers are listed below:

Mol	Chain	Res	Type	Atoms
4	C	450	GOL	C1-C2-C3-O3
4	C	449	GOL	O1-C1-C2-C3
4	C	449	GOL	O1-C1-C2-O2
4	C	450	GOL	O1-C1-C2-O2
4	C	449	GOL	O2-C2-C3-O3
4	C	450	GOL	O1-C1-C2-C3

Continued on next page...

Continued from previous page...

Mol	Chain	Res	Type	Atoms
4	C	450	GOL	O2-C2-C3-O3

There are no ring outliers.

No monomer is involved in short contacts.

5.7 Other polymers [i](#)

There are no such residues in this entry.

5.8 Polymer linkage issues [i](#)

There are no chain breaks in this entry.

6 Fit of model and data

6.1 Protein, DNA and RNA chains

In the following table, the column labelled ‘#RSRZ> 2’ contains the number (and percentage) of RSRZ outliers, followed by percent RSRZ outliers for the chain as percentile scores relative to all X-ray entries and entries of similar resolution. The OWAB column contains the minimum, median, 95th percentile and maximum values of the occupancy-weighted average B-factor per residue. The column labelled ‘Q< 0.9’ lists the number of (and percentage) of residues with an average occupancy less than 0.9.

Mol	Chain	Analysed	<RSRZ>	#RSRZ>2	OWAB(Å ²)	Q<0.9
1	A	232/240 (96%)	0.48	14 (6%) 21 20	18, 33, 62, 68	0
1	B	227/240 (94%)	1.17	39 (17%) 1 1	28, 52, 79, 83	0
1	C	226/240 (94%)	0.29	5 (2%) 62 60	18, 28, 53, 64	0
All	All	685/720 (95%)	0.64	58 (8%) 10 10	18, 37, 72, 83	0

All (58) RSRZ outliers are listed below:

Mol	Chain	Res	Type	RSRZ
1	B	53	ILE	7.5
1	B	54	ASP	7.0
1	B	253	ALA	6.6
1	B	223	TYR	5.2
1	B	251	VAL	4.9
1	B	264	LEU	4.7
1	B	262	LEU	4.6
1	B	278	GLN	4.5
1	B	260	SER	4.2
1	A	272	TRP	4.1
1	C	79	ALA	4.1
1	C	284	LYS	4.1
1	B	252	ASP	4.0
1	A	269	LYS	3.9
1	A	67	TYR	3.8
1	B	247	ALA	3.6
1	A	274	ILE	3.6
1	B	275	ASN	3.5
1	B	224	HIS	3.3
1	B	257	LYS	3.3
1	B	271	VAL	3.3
1	B	261	ALA	3.3
1	B	272	TRP	3.2

Continued on next page...

Continued from previous page...

Mol	Chain	Res	Type	RSRZ
1	B	277	LEU	3.1
1	B	246	GLU	3.1
1	B	244	LEU	3.0
1	B	276	HIS	3.0
1	A	280	ALA	2.9
1	C	59	TRP	2.8
1	B	258	GLY	2.8
1	B	218	ASN	2.8
1	A	279	GLU	2.7
1	A	273	MET	2.7
1	B	254	GLN	2.7
1	A	277	LEU	2.7
1	B	186	MET	2.6
1	B	256	ILE	2.6
1	A	275	ASN	2.6
1	A	271	VAL	2.6
1	A	236	GLY	2.6
1	B	265	ALA	2.6
1	A	270	ASN	2.5
1	B	255	ASN	2.5
1	C	78	GLU	2.4
1	B	153	ILE	2.4
1	B	225	LYS	2.4
1	A	268	ARG	2.3
1	B	230	HIS	2.3
1	B	215	VAL	2.3
1	B	250	ASN	2.2
1	B	274	ILE	2.2
1	B	124	ASN	2.1
1	A	264	LEU	2.1
1	B	273	MET	2.1
1	B	243	LEU	2.1
1	B	182	ASP	2.0
1	B	55	ASP	2.0
1	C	89	GLU	2.0

6.2 Non-standard residues in protein, DNA, RNA chains

There are no non-standard protein/DNA/RNA residues in this entry.

6.3 Carbohydrates [i](#)

There are no carbohydrates in this entry.

6.4 Ligands [i](#)

In the following table, the Atoms column lists the number of modelled atoms in the group and the number defined in the chemical component dictionary. The B-factors column lists the minimum, median, 95th percentile and maximum values of B factors of atoms in the group. The column labelled 'Q< 0.9' lists the number of atoms with occupancy less than 0.9.

Mol	Type	Chain	Res	Atoms	RSCC	RSR	B-factors(Å ²)	Q<0.9
2	HIS	A	322	10/11	0.69	0.26	60,60,60,61	0
4	GOL	C	449	6/6	0.78	0.15	57,58,59,59	0
4	GOL	C	450	6/6	0.82	0.24	44,46,47,48	0
3	SO4	C	451	5/5	0.83	0.20	87,87,88,88	0
3	SO4	A	325	5/5	0.86	0.25	93,93,93,93	0
3	SO4	B	323	5/5	0.88	0.24	98,98,99,99	0
3	SO4	B	322	5/5	0.89	0.14	88,89,89,89	0
3	SO4	A	324	5/5	0.90	0.16	108,108,108,108	0
3	SO4	C	452	5/5	0.91	0.32	83,83,84,84	0
3	SO4	A	323	5/5	0.96	0.13	51,52,53,53	0

6.5 Other polymers [i](#)

There are no such residues in this entry.