



# Full wwPDB X-ray Structure Validation Report ⓘ

Nov 21, 2023 – 05:36 AM JST

PDB ID : 7EVU  
Title : Co-crystal Structure of Toxoplasma gondii Prolyl tRNA Synthetase (TgPRS) in complex with HFG and JE6  
Authors : Mishra, S.; Malhotra, N.; Manickam, Y.; Sharma, A.  
Deposited on : 2021-05-22  
Resolution : 1.70 Å(reported)

This is a Full wwPDB X-ray Structure Validation Report for a publicly released PDB entry.

We welcome your comments at [validation@mail.wwpdb.org](mailto:validation@mail.wwpdb.org)

A user guide is available at

<https://www.wwpdb.org/validation/2017/XrayValidationReportHelp>

with specific help available everywhere you see the ⓘ symbol.

The types of validation reports are described at

<http://www.wwpdb.org/validation/2017/FAQs#types>.

---

The following versions of software and data (see [references ⓘ](#)) were used in the production of this report:

MolProbity : 4.02b-467  
Mogul : 1.8.5 (274361), CSD as541be (2020)  
Xtriage (Phenix) : 1.13  
EDS : 2.36  
buster-report : 1.1.7 (2018)  
Percentile statistics : 20191225.v01 (using entries in the PDB archive December 25th 2019)  
Refmac : 5.8.0158  
CCP4 : 7.0.044 (Gargrove)  
Ideal geometry (proteins) : Engh & Huber (2001)  
Ideal geometry (DNA, RNA) : Parkinson et al. (1996)  
Validation Pipeline (wwPDB-VP) : 2.36

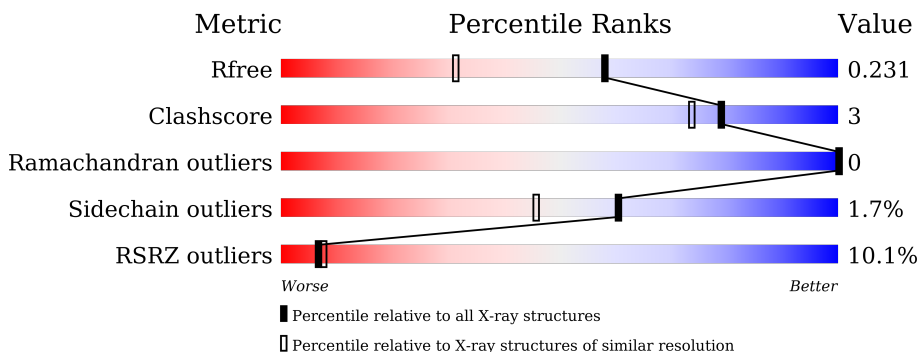
# 1 Overall quality at a glance

The following experimental techniques were used to determine the structure:

*X-RAY DIFFRACTION*

The reported resolution of this entry is 1.70 Å.

Percentile scores (ranging between 0-100) for global validation metrics of the entry are shown in the following graphic. The table shows the number of entries on which the scores are based.



Metric	Whole archive (#Entries)	Similar resolution (#Entries, resolution range(Å))
$R_{free}$	130704	4298 (1.70-1.70)
Clashscore	141614	4695 (1.70-1.70)
Ramachandran outliers	138981	4610 (1.70-1.70)
Sidechain outliers	138945	4610 (1.70-1.70)
RSRZ outliers	127900	4222 (1.70-1.70)

The table below summarises the geometric issues observed across the polymeric chains and their fit to the electron density. The red, orange, yellow and green segments of the lower bar indicate the fraction of residues that contain outliers for  $\geq 3$ , 2, 1 and 0 types of geometric quality criteria respectively. A grey segment represents the fraction of residues that are not modelled. The numeric value for each fraction is indicated below the corresponding segment, with a dot representing fractions  $\leq 5\%$ . The upper red bar (where present) indicates the fraction of residues that have poor fit to the electron density. The numeric value is given above the bar.

Mol	Chain	Length	Quality of chain
1	A	500	 7% 90% 7%
1	B	500	 12% 89% 6%

## 2 Entry composition

There are 5 unique types of molecules in this entry. The entry contains 8557 atoms, of which 0 are hydrogens and 0 are deuteriums.

In the tables below, the ZeroOcc column contains the number of atoms modelled with zero occupancy, the AltConf column contains the number of residues with at least one atom in alternate conformation and the Trace column contains the number of residues modelled with at most 2 atoms.

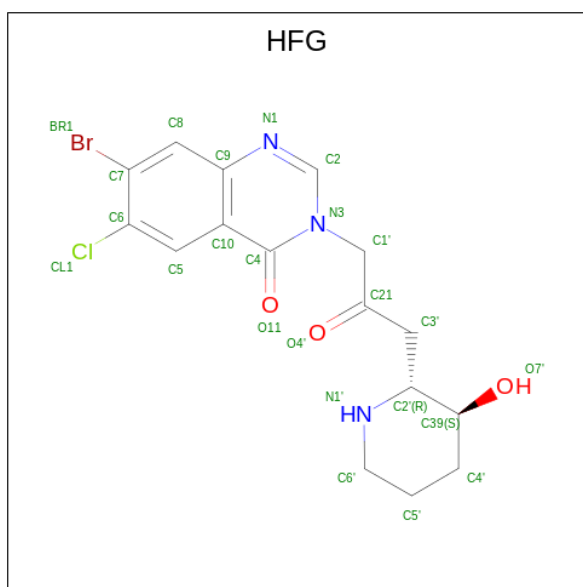
- Molecule 1 is a protein called Prolyl-tRNA synthetase (ProRS).

Mol	Chain	Residues	Atoms					ZeroOcc	AltConf	Trace
			Total	C	N	O	S			
1	A	484	Total	C	N	O	S	0	0	0
			3948	2535	676	714	23			
1	B	480	Total	C	N	O	S	0	1	0
			3938	2526	676	714	22			

There are 6 discrepancies between the modelled and reference sequences:

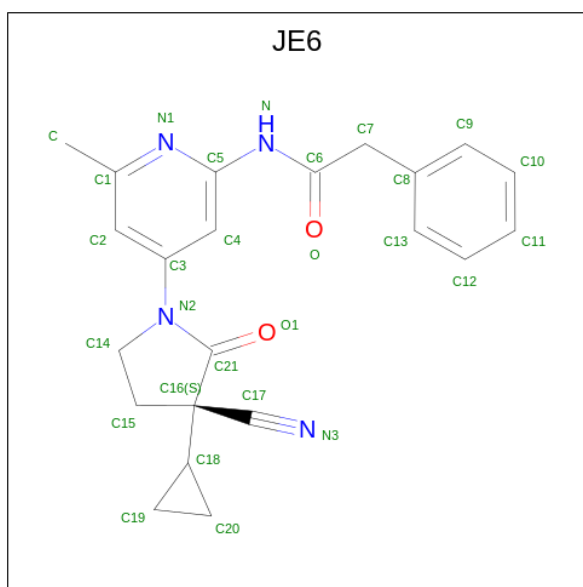
Chain	Residue	Modelled	Actual	Comment	Reference
A	331	GLY	-	expression tag	UNP A0A7J6JUK2
A	332	ALA	-	expression tag	UNP A0A7J6JUK2
A	333	MET	-	expression tag	UNP A0A7J6JUK2
B	331	GLY	-	expression tag	UNP A0A7J6JUK2
B	332	ALA	-	expression tag	UNP A0A7J6JUK2
B	333	MET	-	expression tag	UNP A0A7J6JUK2

- Molecule 2 is 7-bromo-6-chloro-3-{3-[(2R,3S)-3-hydroxypiperidin-2-yl]-2-oxopropyl}quinazolin-4(3H)-one (three-letter code: HFG) (formula: C<sub>16</sub>H<sub>17</sub>BrClN<sub>3</sub>O<sub>3</sub>) (labeled as "Ligand of Interest" by depositor).



Mol	Chain	Residues	Atoms					ZeroOcc	AltConf	
			Total	Br	C	Cl	N			O
2	A	1	24	1	16	1	3	3	0	0
2	B	1	24	1	16	1	3	3	0	0

- Molecule 3 is {N}-[4-[(3 {S})-3-cyano-3-cyclopropyl-2-oxidanylidene-pyrrolidin-1-yl]-6-methyl-pyridin-2-yl]-2-phenyl-ethanamide (three-letter code: JE6) (formula: C<sub>22</sub>H<sub>22</sub>N<sub>4</sub>O<sub>2</sub>) (labeled as "Ligand of Interest" by depositor).



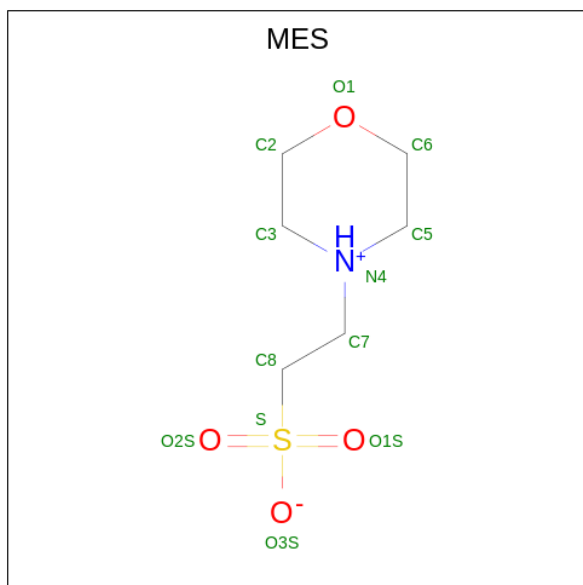
Mol	Chain	Residues	Atoms			ZeroOcc	AltConf	
			Total	C	N			O
3	A	1	28	22	4	2	0	0

*Continued on next page...*

Continued from previous page...

Mol	Chain	Residues	Atoms				ZeroOcc	AltConf
			Total	C	N	O		
3	B	1	28	22	4	2	0	0

- Molecule 4 is 2-(N-MORPHOLINO)-ETHANESULFONIC ACID (three-letter code: MES) (formula: C<sub>6</sub>H<sub>13</sub>NO<sub>4</sub>S).



Mol	Chain	Residues	Atoms					ZeroOcc	AltConf
			Total	C	N	O	S		
4	B	1	12	6	1	4	1	0	0

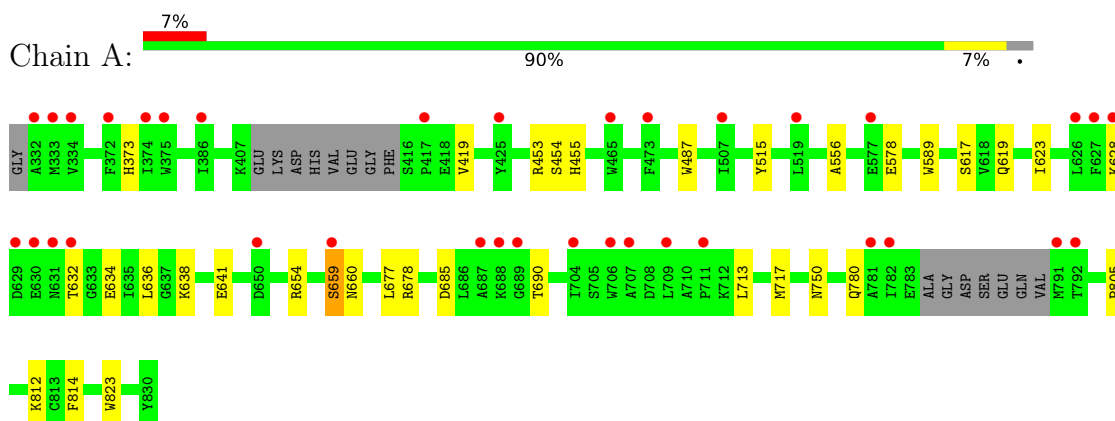
- Molecule 5 is water.

Mol	Chain	Residues	Atoms		ZeroOcc	AltConf
			Total	O		
5	A	277	277	277	0	0
5	B	278	278	278	0	0

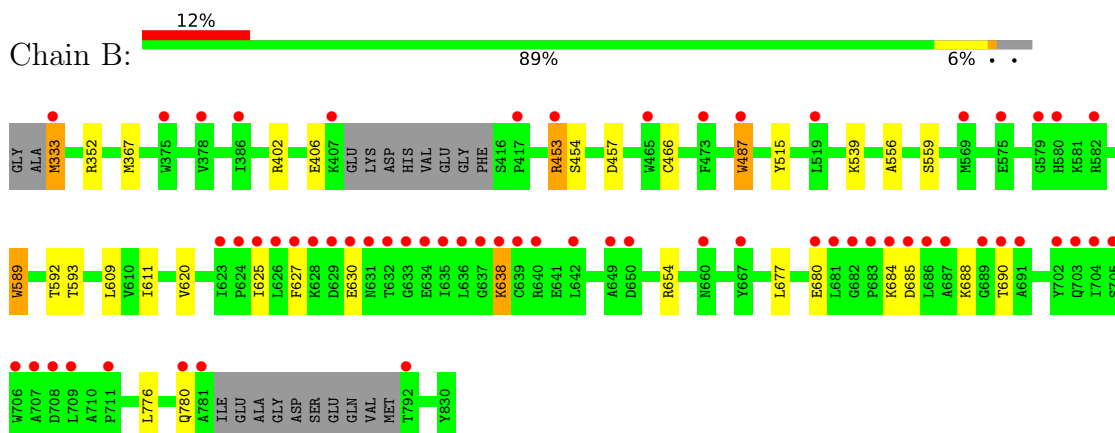
### 3 Residue-property plots [i](#)

These plots are drawn for all protein, RNA, DNA and oligosaccharide chains in the entry. The first graphic for a chain summarises the proportions of the various outlier classes displayed in the second graphic. The second graphic shows the sequence view annotated by issues in geometry and electron density. Residues are color-coded according to the number of geometric quality criteria for which they contain at least one outlier: green = 0, yellow = 1, orange = 2 and red = 3 or more. A red dot above a residue indicates a poor fit to the electron density ( $RSRZ > 2$ ). Stretches of 2 or more consecutive residues without any outlier are shown as a green connector. Residues present in the sample, but not in the model, are shown in grey.

- Molecule 1: Prolyl-tRNA synthetase (ProRS)



- Molecule 1: Prolyl-tRNA synthetase (ProRS)



## 4 Data and refinement statistics

Property	Value	Source
Space group	P 1	Depositor
Cell constants a, b, c, $\alpha$ , $\beta$ , $\gamma$	70.75Å 70.83Å 76.04Å 92.16° 101.44° 115.61°	Depositor
Resolution (Å)	54.24 – 1.70 59.62 – 1.70	Depositor EDS
% Data completeness (in resolution range)	96.8 (54.24-1.70) 96.9 (59.62-1.70)	Depositor EDS
$R_{merge}$	(Not available)	Depositor
$R_{sym}$	(Not available)	Depositor
$\langle I/\sigma(I) \rangle$ <sup>1</sup>	1.33 (at 1.70Å)	Xtrriage
Refinement program	PHENIX 1.15rc2_3428	Depositor
R, $R_{free}$	0.195 , 0.227 0.202 , 0.231	Depositor DCC
$R_{free}$ test set	6805 reflections (4.91%)	wwPDB-VP
Wilson B-factor (Å <sup>2</sup> )	28.1	Xtrriage
Anisotropy	0.264	Xtrriage
Bulk solvent $k_{sol}$ (e/Å <sup>3</sup> ), $B_{sol}$ (Å <sup>2</sup> )	0.34 , 47.3	EDS
L-test for twinning <sup>2</sup>	$\langle  L  \rangle = 0.49$ , $\langle L^2 \rangle = 0.32$	Xtrriage
Estimated twinning fraction	No twinning to report.	Xtrriage
$F_o, F_c$ correlation	0.96	EDS
Total number of atoms	8557	wwPDB-VP
Average B, all atoms (Å <sup>2</sup> )	39.0	wwPDB-VP

Xtrriage's analysis on translational NCS is as follows: *The analyses of the Patterson function reveals a significant off-origin peak that is 20.32 % of the origin peak, indicating pseudo-translational symmetry. The chance of finding a peak of this or larger height randomly in a structure without pseudo-translational symmetry is equal to 8.9190e-03. The detected translational NCS is most likely also responsible for the elevated intensity ratio.*

<sup>1</sup>Intensities estimated from amplitudes.

<sup>2</sup>Theoretical values of  $\langle |L| \rangle$ ,  $\langle L^2 \rangle$  for acentric reflections are 0.5, 0.333 respectively for untwinned datasets, and 0.375, 0.2 for perfectly twinned datasets.

## 5 Model quality [i](#)

### 5.1 Standard geometry [i](#)

Bond lengths and bond angles in the following residue types are not validated in this section: JE6, MES, HFG

The Z score for a bond length (or angle) is the number of standard deviations the observed value is removed from the expected value. A bond length (or angle) with  $|Z| > 5$  is considered an outlier worth inspection. RMSZ is the root-mean-square of all Z scores of the bond lengths (or angles).

Mol	Chain	Bond lengths		Bond angles	
		RMSZ	# Z  >5	RMSZ	# Z  >5
1	A	0.59	0/4053	0.69	0/5481
1	B	0.57	0/4043	0.70	0/5465
All	All	0.58	0/8096	0.70	0/10946

There are no bond length outliers.

There are no bond angle outliers.

There are no chirality outliers.

There are no planarity outliers.

### 5.2 Too-close contacts [i](#)

In the following table, the Non-H and H(model) columns list the number of non-hydrogen atoms and hydrogen atoms in the chain respectively. The H(added) column lists the number of hydrogen atoms added and optimized by MolProbity. The Clashes column lists the number of clashes within the asymmetric unit, whereas Symm-Clashes lists symmetry-related clashes.

Mol	Chain	Non-H	H(model)	H(added)	Clashes	Symm-Clashes
1	A	3948	0	3915	20	0
1	B	3938	0	3904	23	0
2	A	24	0	17	1	0
2	B	24	0	17	0	0
3	A	28	0	0	0	0
3	B	28	0	0	0	0
4	B	12	0	13	2	0
5	A	277	0	0	2	0
5	B	278	0	0	3	0
All	All	8557	0	7866	44	0

The all-atom clashscore is defined as the number of clashes found per 1000 atoms (including



hydrogen atoms). The all-atom clashscore for this structure is 3.

All (44) close contacts within the same asymmetric unit are listed below, sorted by their clash magnitude.

Atom-1	Atom-2	Interatomic distance (Å)	Clash overlap (Å)
1:B:487:TRP:CD1	1:B:487:TRP:O	1.87	1.28
1:B:487:TRP:O	1:B:487:TRP:HD1	1.18	1.11
1:B:487:TRP:CD1	1:B:487:TRP:C	2.53	0.81
1:A:632:THR:HG23	1:A:634:GLU:H	1.51	0.74
1:A:632:THR:HG21	1:A:634:GLU:OE1	1.95	0.67
1:B:627:PHE:O	1:B:630:GLU:HG3	2.01	0.60
1:A:628:LYS:HG2	1:A:659:SER:O	2.04	0.58
1:A:578:GLU:O	1:A:578:GLU:HG3	2.04	0.57
1:A:628:LYS:HE3	1:A:660:ASN:HA	1.86	0.56
1:B:539:LYS:NZ	5:B:1012:HOH:O	2.40	0.55
1:B:515:TYR:CZ	1:B:556:ALA:HB1	2.42	0.55
1:A:515:TYR:CZ	1:A:556:ALA:HB1	2.43	0.53
1:B:402:ARG:O	1:B:406:GLU:HG3	2.10	0.52
1:B:367:MET:HE1	1:B:593:THR:HG21	1.91	0.52
1:B:487:TRP:HB2	1:B:592:THR:HG22	1.91	0.51
1:A:623:ILE:HD12	1:A:678:ARG:HD2	1.93	0.51
1:A:750:ASN:CG	1:A:780:GLN:HE22	2.13	0.51
1:B:333:MET:O	1:B:352:ARG:NH1	2.34	0.50
1:B:466:CYS:HA	4:B:903:MES:H32	1.94	0.50
1:B:625:ILE:HD11	1:B:680:GLU:HB3	1.94	0.49
1:B:776:LEU:O	1:B:780:GLN:HG3	2.11	0.49
4:B:903:MES:H82	5:B:1212:HOH:O	2.12	0.48
1:B:684:LYS:O	1:B:688:LYS:HG3	2.13	0.48
1:A:638:LYS:HD3	1:A:641:GLU:OE1	2.14	0.48
1:A:453:ARG:HD3	1:A:453:ARG:HA	1.62	0.46
1:A:677:LEU:HD13	1:A:713:LEU:HD22	1.96	0.46
1:A:455:HIS:HE1	5:A:1240:HOH:O	1.99	0.46
1:B:638:LYS:HD3	1:B:638:LYS:HA	1.48	0.45
1:A:685:ASP:HB3	1:A:690:THR:O	2.17	0.44
1:A:805:PRO:HG2	1:A:823:TRP:CD1	2.52	0.44
1:B:620:VAL:HG22	1:B:677:LEU:HB2	1.99	0.44
1:A:373:HIS:CE1	5:A:1082:HOH:O	2.70	0.44
1:B:685:ASP:HB3	1:B:690:THR:O	2.18	0.44
1:B:487:TRP:CB	1:B:592:THR:HG22	2.49	0.43
1:B:453:ARG:HG2	1:B:457:ASP:OD2	2.18	0.43
1:B:684:LYS:HD3	1:B:688:LYS:HE2	2.00	0.43
1:A:638:LYS:HD3	1:A:638:LYS:HA	1.85	0.43
1:A:619:GLN:HB3	1:A:717:MET:SD	2.59	0.42

*Continued on next page...*

Continued from previous page...

Atom-1	Atom-2	Interatomic distance (Å)	Clash overlap (Å)
1:A:419:VAL:HG13	2:A:901:HFG:BR1	2.75	0.41
1:B:559:SER:HA	1:B:589:TRP:HB3	2.01	0.41
1:B:609:LEU:HD13	1:B:611:ILE:HD11	2.03	0.41
1:A:373:HIS:HB3	1:A:617:SER:HB3	2.02	0.41
1:A:636:LEU:HD23	1:A:636:LEU:HA	1.87	0.41
1:B:685:ASP:OD2	5:B:1001:HOH:O	2.22	0.40

There are no symmetry-related clashes.

## 5.3 Torsion angles [i](#)

### 5.3.1 Protein backbone [i](#)

In the following table, the Percentiles column shows the percent Ramachandran outliers of the chain as a percentile score with respect to all X-ray entries followed by that with respect to entries of similar resolution.

The Analysed column shows the number of residues for which the backbone conformation was analysed, and the total number of residues.

Mol	Chain	Analysed	Favoured	Allowed	Outliers	Percentiles	
1	A	478/500 (96%)	471 (98%)	7 (2%)	0	100	100
1	B	475/500 (95%)	468 (98%)	7 (2%)	0	100	100
All	All	953/1000 (95%)	939 (98%)	14 (2%)	0	100	100

There are no Ramachandran outliers to report.

### 5.3.2 Protein sidechains [i](#)

In the following table, the Percentiles column shows the percent sidechain outliers of the chain as a percentile score with respect to all X-ray entries followed by that with respect to entries of similar resolution.

The Analysed column shows the number of residues for which the sidechain conformation was analysed, and the total number of residues.

Mol	Chain	Analysed	Rotameric	Outliers	Percentiles	
1	A	422/436 (97%)	415 (98%)	7 (2%)	60	46
1	B	422/436 (97%)	414 (98%)	8 (2%)	57	41

Continued on next page...

*Continued from previous page...*

Mol	Chain	Analysed	Rotameric	Outliers	Percentiles
All	All	844/872 (97%)	829 (98%)	15 (2%)	60 43

All (15) residues with a non-rotameric sidechain are listed below:

Mol	Chain	Res	Type
1	A	454	SER
1	A	487	TRP
1	A	589	TRP
1	A	654	ARG
1	A	659	SER
1	A	812	LYS
1	A	814	PHE
1	B	333	MET
1	B	453	ARG
1	B	454	SER
1	B	487	TRP
1	B	589	TRP
1	B	638	LYS
1	B	654[A]	ARG
1	B	654[B]	ARG

Sometimes sidechains can be flipped to improve hydrogen bonding and reduce clashes. All (8) such sidechains are listed below:

Mol	Chain	Res	Type
1	A	488	GLN
1	A	631	ASN
1	A	774	GLN
1	A	780	GLN
1	B	488	GLN
1	B	668	ASN
1	B	774	GLN
1	B	780	GLN

### 5.3.3 RNA [i](#)

There are no RNA molecules in this entry.

## 5.4 Non-standard residues in protein, DNA, RNA chains [i](#)

There are no non-standard protein/DNA/RNA residues in this entry.

## 5.5 Carbohydrates [i](#)

There are no monosaccharides in this entry.

## 5.6 Ligand geometry [i](#)

5 ligands are modelled in this entry.

In the following table, the Counts columns list the number of bonds (or angles) for which Mogul statistics could be retrieved, the number of bonds (or angles) that are observed in the model and the number of bonds (or angles) that are defined in the Chemical Component Dictionary. The Link column lists molecule types, if any, to which the group is linked. The Z score for a bond length (or angle) is the number of standard deviations the observed value is removed from the expected value. A bond length (or angle) with  $|Z| > 2$  is considered an outlier worth inspection. RMSZ is the root-mean-square of all Z scores of the bond lengths (or angles).

Mol	Type	Chain	Res	Link	Bond lengths			Bond angles		
					Counts	RMSZ	# Z  > 2	Counts	RMSZ	# Z  > 2
4	MES	B	903	-	12,12,12	2.28	1 (8%)	14,16,16	1.30	2 (14%)
3	JE6	B	902	-	29,31,31	0.37	0	39,45,45	0.73	1 (2%)
2	HFG	A	901	-	25,26,26	0.25	0	27,37,37	0.83	1 (3%)
3	JE6	A	902	-	29,31,31	0.33	0	39,45,45	0.67	1 (2%)
2	HFG	B	901	-	25,26,26	0.28	0	27,37,37	0.90	1 (3%)

In the following table, the Chirals column lists the number of chiral outliers, the number of chiral centers analysed, the number of these observed in the model and the number defined in the Chemical Component Dictionary. Similar counts are reported in the Torsion and Rings columns. '-' means no outliers of that kind were identified.

Mol	Type	Chain	Res	Link	Chirals	Torsions	Rings
4	MES	B	903	-	-	5/6/14/14	0/1/1/1
3	JE6	B	902	-	-	0/14/39/39	0/4/4/4
2	HFG	A	901	-	-	0/8/19/19	0/3/3/3
3	JE6	A	902	-	-	0/14/39/39	0/4/4/4
2	HFG	B	901	-	-	0/8/19/19	0/3/3/3

All (1) bond length outliers are listed below:

Mol	Chain	Res	Type	Atoms	Z	Observed(Å)	Ideal(Å)
4	B	903	MES	C8-S	-7.75	1.66	1.77

All (6) bond angle outliers are listed below:

Mol	Chain	Res	Type	Atoms	Z	Observed(°)	Ideal(°)
2	B	901	HFG	C6'-N1'-C2'	-3.32	109.55	111.62
4	B	903	MES	O2S-S-C8	2.87	110.37	106.92
3	A	902	JE6	C15-C16-C17	2.68	115.77	111.47
2	A	901	HFG	C5'-C4'-C39	-2.64	106.64	111.47
3	B	902	JE6	C15-C16-C17	2.57	115.61	111.47
4	B	903	MES	O3S-S-C8	2.12	109.20	105.77

There are no chirality outliers.

All (5) torsion outliers are listed below:

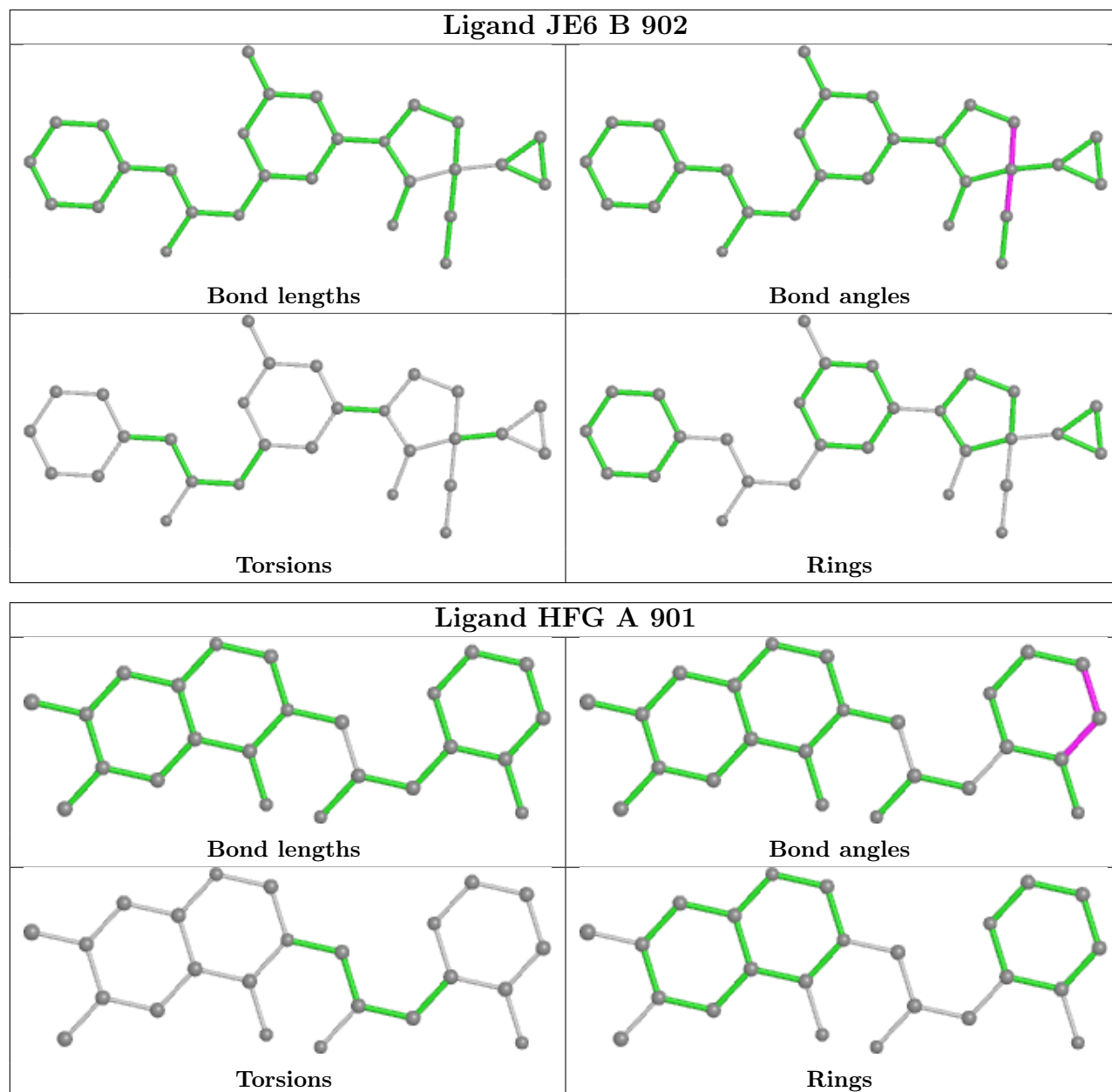
Mol	Chain	Res	Type	Atoms
4	B	903	MES	C7-C8-S-O1S
4	B	903	MES	C7-C8-S-O3S
4	B	903	MES	C8-C7-N4-C3
4	B	903	MES	C7-C8-S-O2S
4	B	903	MES	C8-C7-N4-C5

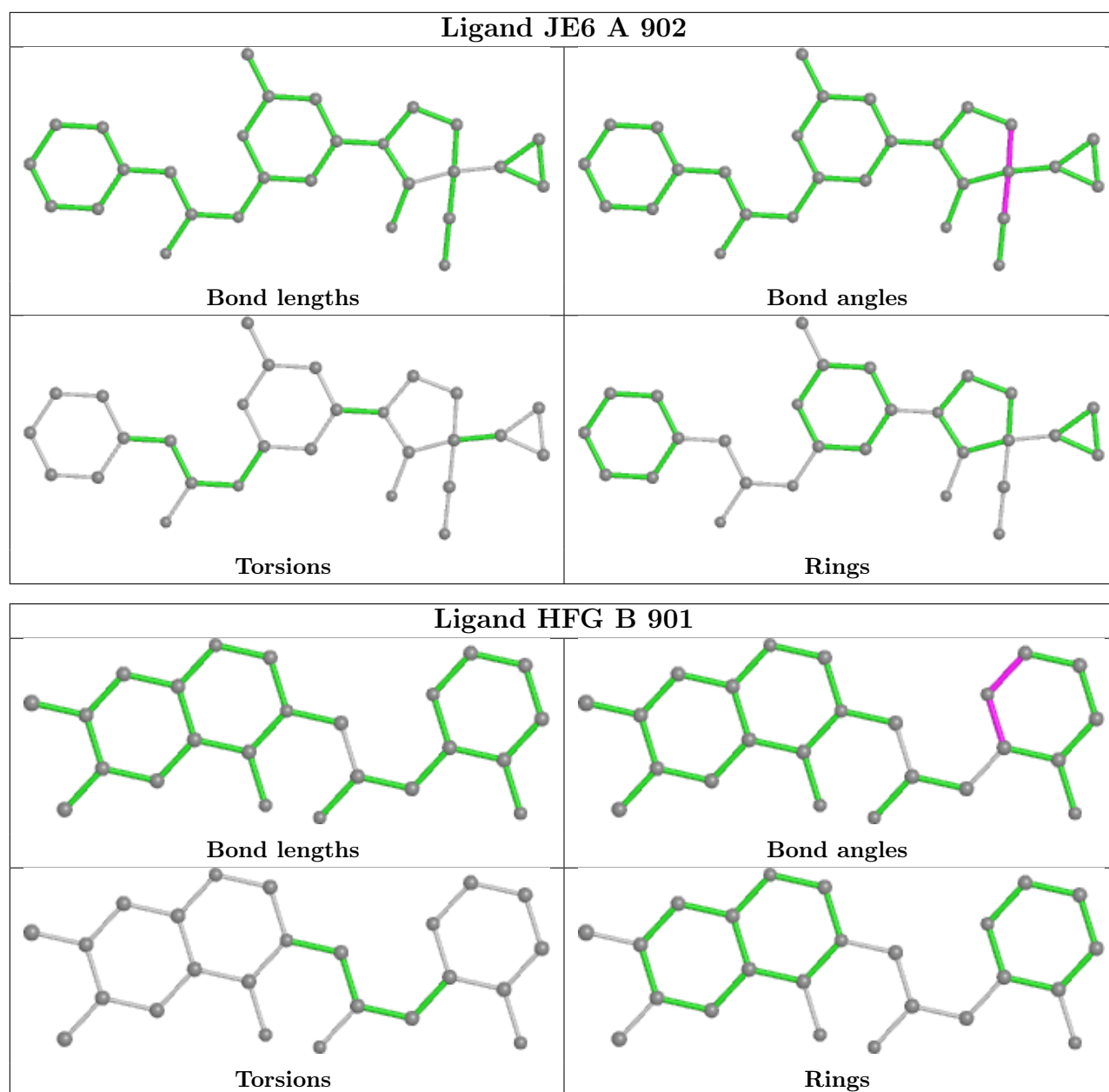
There are no ring outliers.

2 monomers are involved in 3 short contacts:

Mol	Chain	Res	Type	Clashes	Symm-Clashes
4	B	903	MES	2	0
2	A	901	HFG	1	0

The following is a two-dimensional graphical depiction of Mogul quality analysis of bond lengths, bond angles, torsion angles, and ring geometry for all instances of the Ligand of Interest. In addition, ligands with molecular weight > 250 and outliers as shown on the validation Tables will also be included. For torsion angles, if less than 5% of the Mogul distribution of torsion angles is within 10 degrees of the torsion angle in question, then that torsion angle is considered an outlier. Any bond that is central to one or more torsion angles identified as an outlier by Mogul will be highlighted in the graph. For rings, the root-mean-square deviation (RMSD) between the ring in question and similar rings identified by Mogul is calculated over all ring torsion angles. If the average RMSD is greater than 60 degrees and the minimal RMSD between the ring in question and any Mogul-identified rings is also greater than 60 degrees, then that ring is considered an outlier. The outliers are highlighted in purple. The color gray indicates Mogul did not find sufficient equivalents in the CSD to analyse the geometry.





## 5.7 Other polymers [i](#)

There are no such residues in this entry.

## 5.8 Polymer linkage issues [i](#)

There are no chain breaks in this entry.

## 6 Fit of model and data

### 6.1 Protein, DNA and RNA chains

In the following table, the column labelled ‘#RSRZ > 2’ contains the number (and percentage) of RSRZ outliers, followed by percent RSRZ outliers for the chain as percentile scores relative to all X-ray entries and entries of similar resolution. The OWAB column contains the minimum, median, 95<sup>th</sup> percentile and maximum values of the occupancy-weighted average B-factor per residue. The column labelled ‘Q < 0.9’ lists the number of (and percentage) of residues with an average occupancy less than 0.9.

Mol	Chain	Analysed	<RSRZ>	#RSRZ>2	OWAB(Å <sup>2</sup> )	Q<0.9
1	A	484/500 (96%)	0.50	35 (7%) 15 17	20, 35, 61, 87	0
1	B	480/500 (96%)	0.69	62 (12%) 3 4	21, 36, 66, 87	0
All	All	964/1000 (96%)	0.60	97 (10%) 7 8	20, 35, 64, 87	0

All (97) RSRZ outliers are listed below:

Mol	Chain	Res	Type	RSRZ
1	B	627	PHE	8.0
1	B	686	LEU	7.9
1	A	473	PHE	7.5
1	B	632	THR	6.9
1	B	706	TRP	6.7
1	A	332	ALA	6.3
1	B	333	MET	6.2
1	B	709	LEU	5.1
1	B	626	LEU	5.0
1	A	333	MET	4.6
1	A	781	ALA	4.6
1	B	687	ALA	4.6
1	B	682	GLY	4.6
1	A	782	ILE	4.5
1	B	629	ASP	4.5
1	B	689	GLY	4.3
1	A	629	ASP	4.3
1	B	630	GLU	4.3
1	B	631	ASN	4.2
1	B	704	ILE	4.2
1	B	635	ILE	4.1
1	B	473	PHE	4.1
1	B	683	PRO	4.1
1	B	628	LYS	4.0

*Continued on next page...*



*Continued from previous page...*

<b>Mol</b>	<b>Chain</b>	<b>Res</b>	<b>Type</b>	<b>RSRZ</b>
1	A	631	ASN	4.0
1	B	633	GLY	4.0
1	A	628	LYS	3.9
1	B	684	LYS	3.9
1	A	706	TRP	3.6
1	B	690	THR	3.4
1	B	580	HIS	3.2
1	B	705	SER	3.2
1	B	417	PRO	3.2
1	B	624	PRO	3.1
1	B	681	LEU	3.1
1	A	627	PHE	3.1
1	A	417	PRO	3.1
1	A	630	GLU	3.1
1	B	649	ALA	3.1
1	B	465	TRP	3.0
1	B	487	TRP	2.9
1	B	636	LEU	2.9
1	B	634	GLU	2.9
1	B	702	TYR	2.9
1	B	792	THR	2.9
1	A	709	LEU	2.8
1	B	703	GLN	2.8
1	B	685	ASP	2.8
1	B	386	ILE	2.8
1	A	687	ALA	2.8
1	A	707	ALA	2.8
1	A	334	VAL	2.7
1	B	519	LEU	2.7
1	A	792	THR	2.7
1	B	407	LYS	2.7
1	B	637	GLY	2.6
1	B	638	LYS	2.6
1	A	632	THR	2.6
1	A	507	ILE	2.6
1	B	623	ILE	2.6
1	B	579	GLY	2.5
1	B	708	ASP	2.5
1	A	791	MET	2.5
1	A	689	GLY	2.5
1	B	582	ARG	2.5
1	A	386	ILE	2.5

*Continued on next page...*

*Continued from previous page...*

Mol	Chain	Res	Type	RSRZ
1	A	704	ILE	2.5
1	B	453	ARG	2.4
1	A	425	TYR	2.4
1	A	519	LEU	2.4
1	A	465	TRP	2.4
1	B	781	ALA	2.4
1	A	650	ASP	2.4
1	B	569	MET	2.4
1	A	372	PHE	2.3
1	A	577	GLU	2.3
1	A	626	LEU	2.3
1	B	660	ASN	2.3
1	B	625	ILE	2.3
1	A	659	SER	2.3
1	B	650	ASP	2.3
1	B	680	GLU	2.2
1	B	640	ARG	2.2
1	A	374	ILE	2.2
1	B	639	CYS	2.1
1	A	688	LYS	2.1
1	B	375	TRP	2.1
1	B	711	PRO	2.1
1	B	667	TYR	2.1
1	B	707	ALA	2.1
1	A	711	PRO	2.1
1	B	780	GLN	2.1
1	B	691	ALA	2.0
1	B	378	VAL	2.0
1	B	642	LEU	2.0
1	B	575	GLU	2.0
1	A	375	TRP	2.0

## 6.2 Non-standard residues in protein, DNA, RNA chains [i](#)

There are no non-standard protein/DNA/RNA residues in this entry.

## 6.3 Carbohydrates [i](#)

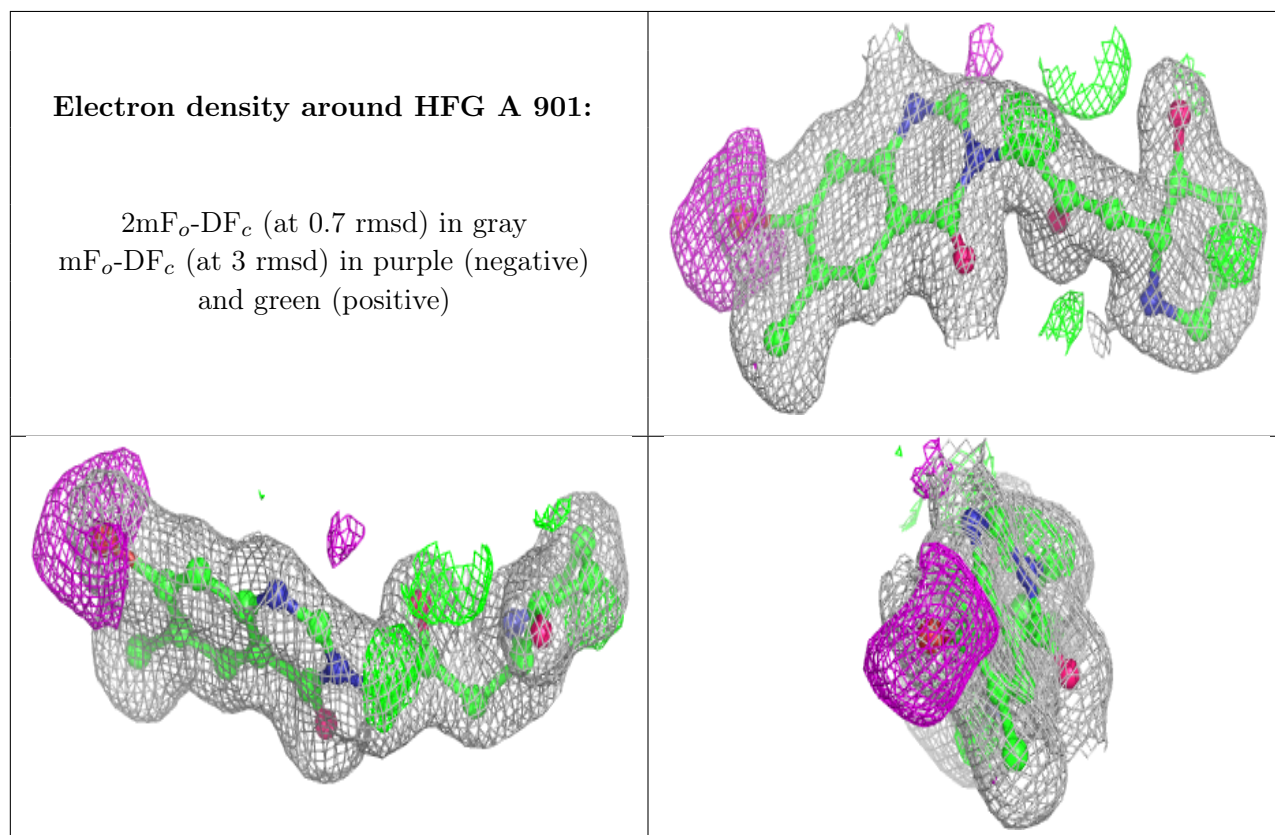
There are no monosaccharides in this entry.

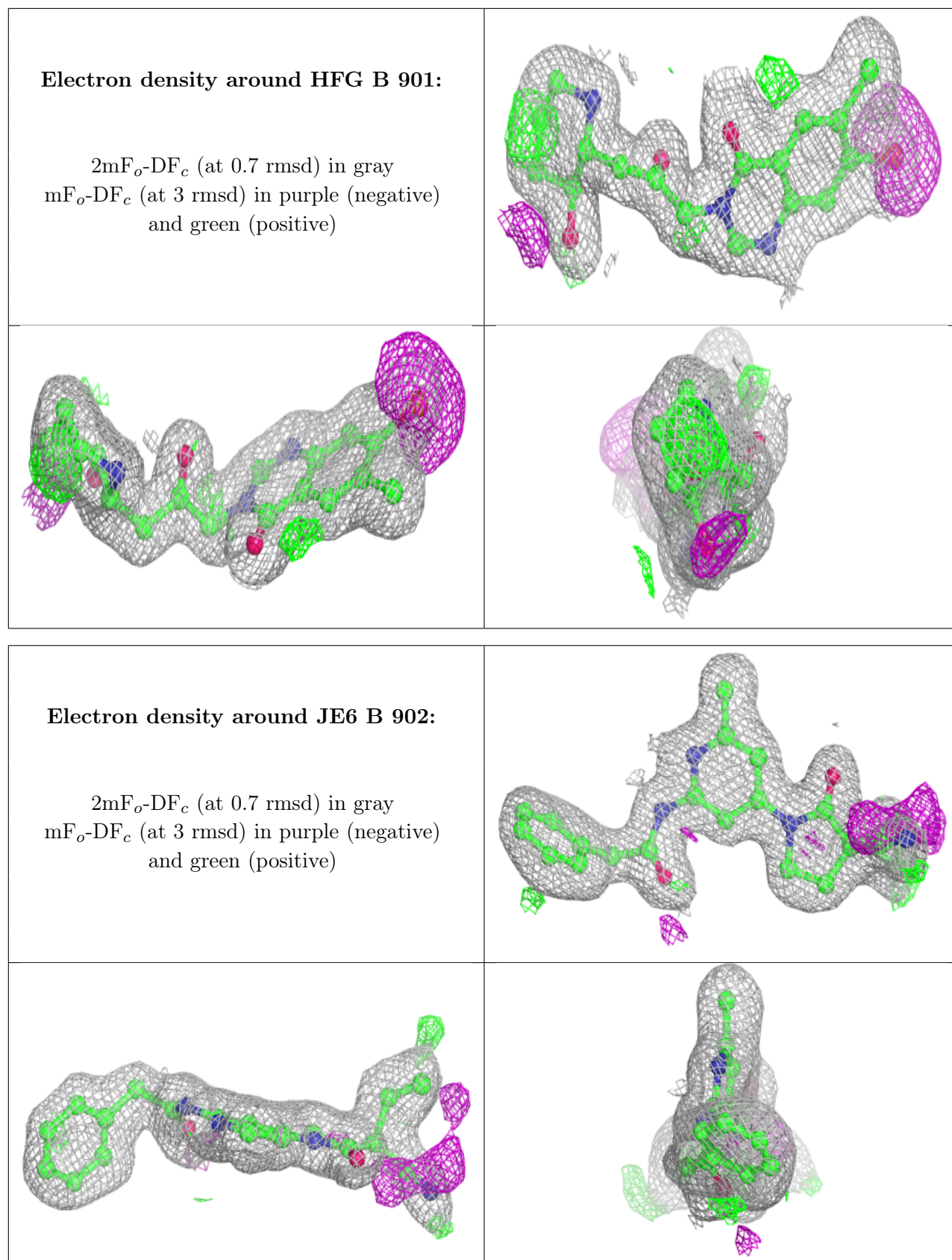
## 6.4 Ligands [i](#)

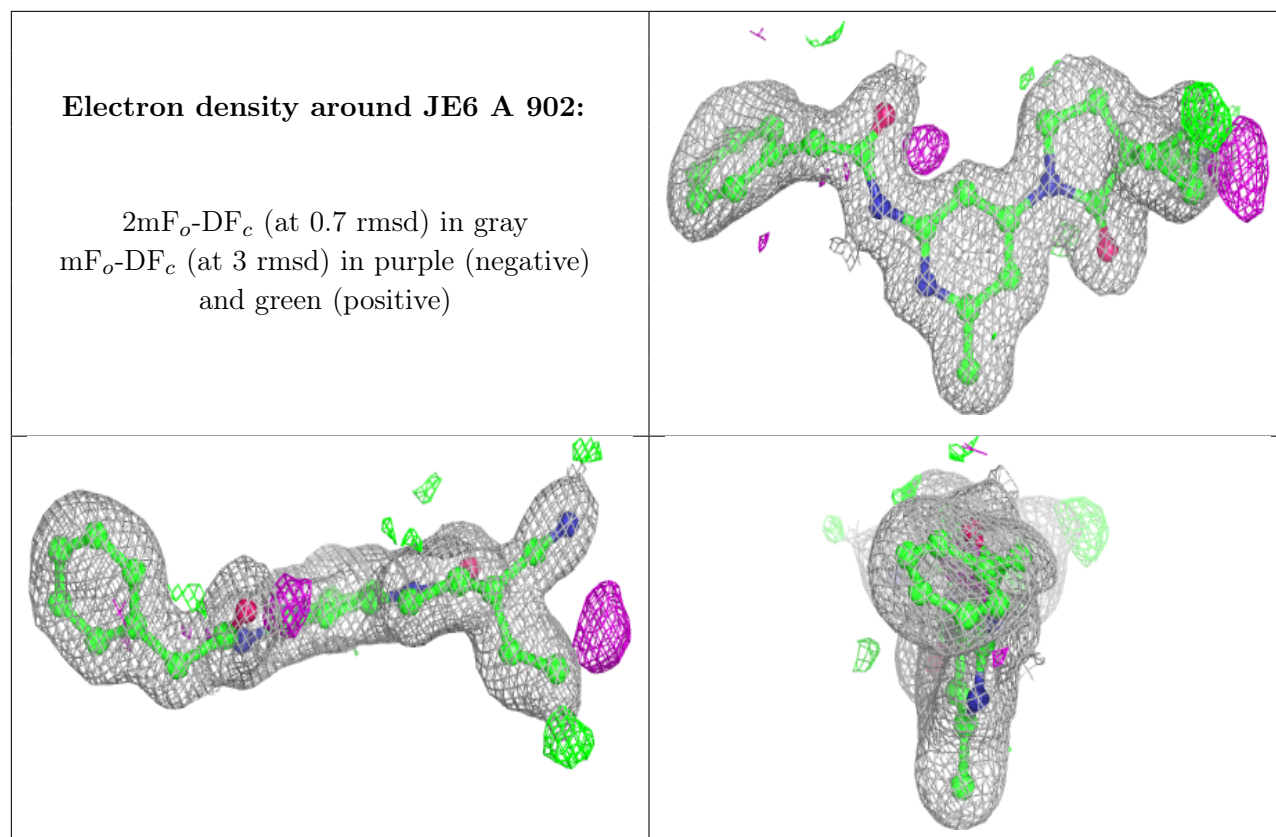
In the following table, the Atoms column lists the number of modelled atoms in the group and the number defined in the chemical component dictionary. The B-factors column lists the minimum, median, 95<sup>th</sup> percentile and maximum values of B factors of atoms in the group. The column labelled 'Q < 0.9' lists the number of atoms with occupancy less than 0.9.

Mol	Type	Chain	Res	Atoms	RSCC	RSR	B-factors(Å <sup>2</sup> )	Q<0.9
2	HFG	A	901	24/24	0.82	0.15	17,23,33,78	24
2	HFG	B	901	24/24	0.82	0.14	19,25,33,71	24
4	MES	B	903	12/12	0.82	0.21	25,30,46,47	12
3	JE6	B	902	28/28	0.91	0.11	19,27,37,42	0
3	JE6	A	902	28/28	0.92	0.11	21,28,38,39	0

The following is a graphical depiction of the model fit to experimental electron density of all instances of the Ligand of Interest. In addition, ligands with molecular weight > 250 and outliers as shown on the geometry validation Tables will also be included. Each fit is shown from different orientation to approximate a three-dimensional view.







## 6.5 Other polymers [i](#)

There are no such residues in this entry.