



Full wwPDB X-ray Structure Validation Report ⓘ

Oct 26, 2024 – 02:46 PM EDT

PDB ID : 2EX9
Title : Crystal structure of penicillin binding protein 4 (dacB) from Escherichia coli, complexed with penicillin-V
Authors : Kishida, H.; Unzai, S.; Roper, D.I.; Lloyd, A.; Park, S.-Y.; Tame, J.R.H.
Deposited on : 2005-11-08
Resolution : 1.65 Å(reported)

This is a Full wwPDB X-ray Structure Validation Report for a publicly released PDB entry.

We welcome your comments at validation@mail.wwpdb.org

A user guide is available at

<https://www.wwpdb.org/validation/2017/XrayValidationReportHelp>

with specific help available everywhere you see the ⓘ symbol.

The types of validation reports are described at

<http://www.wwpdb.org/validation/2017/FAQs#types>.

The following versions of software and data (see [references ⓘ](#)) were used in the production of this report:

MolProbity : 4.02b-467
Mogul : 2022.3.0, CSD as543be (2022)
Xtrriage (Phenix) : 1.20.1
EDS : 3.0
buster-report : 1.1.7 (2018)
Percentile statistics : 20231227.v01 (using entries in the PDB archive December 27th 2023)
CCP4 : 9.0.003 (Gargrove)
Density-Fitness : 1.0.11
Ideal geometry (proteins) : Engh & Huber (2001)
Ideal geometry (DNA, RNA) : Parkinson et al. (1996)
Validation Pipeline (wwPDB-VP) : 2.39

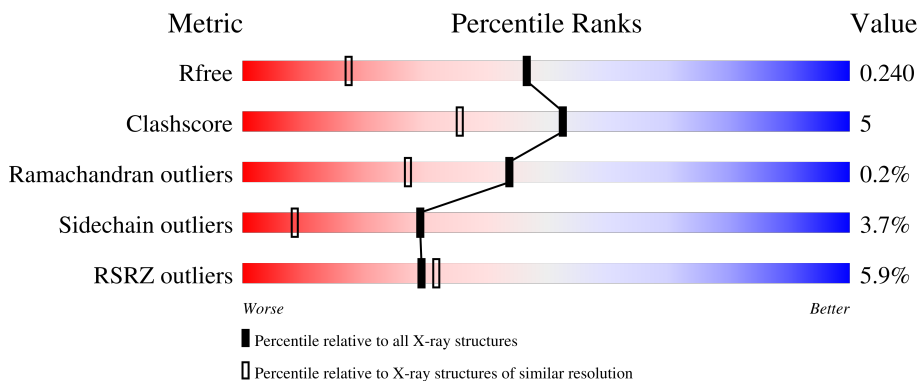
1 Overall quality at a glance i

The following experimental techniques were used to determine the structure:

X-RAY DIFFRACTION

The reported resolution of this entry is 1.65 Å.

Percentile scores (ranging between 0-100) for global validation metrics of the entry are shown in the following graphic. The table shows the number of entries on which the scores are based.



Metric	Whole archive (#Entries)	Similar resolution (#Entries, resolution range(Å))
R_{free}	164625	2328 (1.66-1.66)
Clashscore	180529	2515 (1.66-1.66)
Ramachandran outliers	177936	2475 (1.66-1.66)
Sidechain outliers	177891	2475 (1.66-1.66)
RSRZ outliers	164620	2328 (1.66-1.66)

The table below summarises the geometric issues observed across the polymeric chains and their fit to the electron density. The red, orange, yellow and green segments of the lower bar indicate the fraction of residues that contain outliers for ≥ 3 , 2, 1 and 0 types of geometric quality criteria respectively. A grey segment represents the fraction of residues that are not modelled. The numeric value for each fraction is indicated below the corresponding segment, with a dot representing fractions $\leq 5\%$. The upper red bar (where present) indicates the fraction of residues that have poor fit to the electron density. The numeric value is given above the bar.

Mol	Chain	Length	Quality of chain
1	A	458	

2 Entry composition [i](#)

There are 4 unique types of molecules in this entry. The entry contains 3636 atoms, of which 0 are hydrogens and 0 are deuteriums.

In the tables below, the ZeroOcc column contains the number of atoms modelled with zero occupancy, the AltConf column contains the number of residues with at least one atom in alternate conformation and the Trace column contains the number of residues modelled with at most 2 atoms.

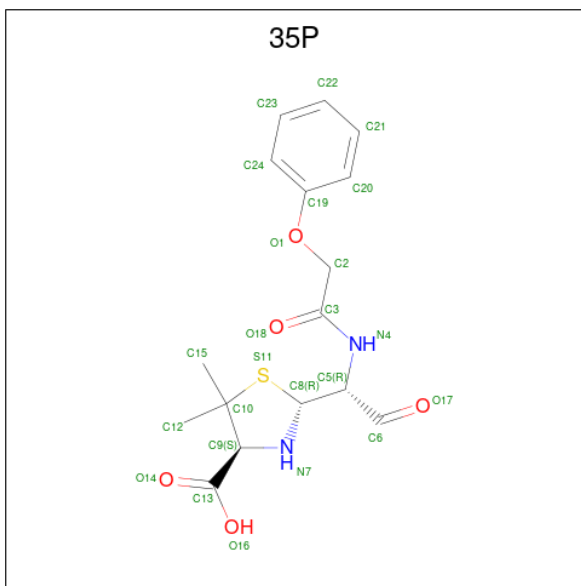
- Molecule 1 is a protein called Penicillin-binding protein 4.

Mol	Chain	Residues	Atoms					ZeroOcc	AltConf	Trace
			Total	C	N	O	S			
1	A	442	3363	2128	589	629	17	0	3	0

There are 2 discrepancies between the modelled and reference sequences:

Chain	Residue	Modelled	Actual	Comment	Reference
A	20	MET	-	initiating methionine	UNP P24228
A	261	TYR	ASP	engineered mutation	UNP P24228

- Molecule 2 is (2R,4S)-5,5-dimethyl-2-[(1R)-2-oxo-1-[(phenoxyacetyl)amino]ethyl]-1,3-thiazolidine-4-carboxylic acid (three-letter code: 35P) (formula: C₁₆H₂₀N₂O₅S).



Mol	Chain	Residues	Atoms					ZeroOcc	AltConf
			Total	C	N	O	S		
2	A	1	24	16	2	5	1	0	0

- Molecule 3 is GLYCEROL (three-letter code: GOL) (formula: C₃H₈O₃).



Mol	Chain	Residues	Atoms	ZeroOcc	AltConf
3	A	1	Total C O 6 3 3	0	0

- Molecule 4 is water.

Mol	Chain	Residues	Atoms	ZeroOcc	AltConf
4	A	243	Total O 243 243	0	0

4 Data and refinement statistics

Property	Value	Source
Space group	P 41 21 2	Depositor
Cell constants a, b, c, α , β , γ	95.76Å 95.76Å 115.88Å 90.00° 90.00° 90.00°	Depositor
Resolution (Å)	20.00 – 1.65 20.00 – 1.65	Depositor EDS
% Data completeness (in resolution range)	100.0 (20.00-1.65) 94.4 (20.00-1.65)	Depositor EDS
R_{merge}	0.06	Depositor
R_{sym}	(Not available)	Depositor
$\langle I/\sigma(I) \rangle$ ¹	1.39 (at 1.65Å)	Xtrriage
Refinement program	REFMAC 5.2.0003	Depositor
R, R_{free}	0.205 , 0.240 0.208 , 0.240	Depositor DCC
R_{free} test set	3122 reflections (5.07%)	wwPDB-VP
Wilson B-factor (Å ²)	24.6	Xtrriage
Anisotropy	0.073	Xtrriage
Bulk solvent k_{sol} (e/Å ³), B_{sol} (Å ²)	0.41 , 41.9	EDS
L-test for twinning ²	$\langle L \rangle = 0.48$, $\langle L^2 \rangle = 0.32$	Xtrriage
Estimated twinning fraction	No twinning to report.	Xtrriage
F_o, F_c correlation	0.96	EDS
Total number of atoms	3636	wwPDB-VP
Average B, all atoms (Å ²)	32.0	wwPDB-VP

Xtrriage's analysis on translational NCS is as follows: *The largest off-origin peak in the Patterson function is 4.76% of the height of the origin peak. No significant pseudotranslation is detected.*

¹Intensities estimated from amplitudes.

²Theoretical values of $\langle |L| \rangle$, $\langle L^2 \rangle$ for acentric reflections are 0.5, 0.333 respectively for untwinned datasets, and 0.375, 0.2 for perfectly twinned datasets.

5 Model quality i

5.1 Standard geometry i

Bond lengths and bond angles in the following residue types are not validated in this section: 35P, GOL

The Z score for a bond length (or angle) is the number of standard deviations the observed value is removed from the expected value. A bond length (or angle) with $|Z| > 5$ is considered an outlier worth inspection. RMSZ is the root-mean-square of all Z scores of the bond lengths (or angles).

Mol	Chain	Bond lengths		Bond angles	
		RMSZ	# Z >5	RMSZ	# Z >5
1	A	0.67	1/3430 (0.0%)	0.86	15/4657 (0.3%)

Chiral center outliers are detected by calculating the chiral volume of a chiral center and verifying if the center is modelled as a planar moiety or with the opposite hand. A planarity outlier is detected by checking planarity of atoms in a peptide group, atoms in a mainchain group or atoms of a sidechain that are expected to be planar.

Mol	Chain	#Chirality outliers	#Planarity outliers
1	A	0	1

All (1) bond length outliers are listed below:

Mol	Chain	Res	Type	Atoms	Z	Observed(Å)	Ideal(Å)
1	A	439	MET	CB-CG	5.88	1.70	1.51

All (15) bond angle outliers are listed below:

Mol	Chain	Res	Type	Atoms	Z	Observed(°)	Ideal(°)
1	A	100	ASP	CB-CG-OD2	7.25	124.83	118.30
1	A	396	ASP	CB-CG-OD1	7.15	124.73	118.30
1	A	297	ASP	CB-CG-OD2	6.62	124.26	118.30
1	A	220	ASP	CB-CG-OD2	6.40	124.06	118.30
1	A	51	ASP	CB-CG-OD2	6.01	123.71	118.30
1	A	186	ASP	CB-CG-OD2	5.93	123.64	118.30
1	A	355	ASP	CB-CG-OD2	5.80	123.52	118.30
1	A	312	ASP	CB-CG-OD2	5.54	123.29	118.30
1	A	170	ASP	CB-CG-OD2	5.53	123.27	118.30
1	A	472	ASP	CB-CG-OD2	5.47	123.22	118.30
1	A	138	ASP	CB-CG-OD2	5.45	123.20	118.30
1	A	307	ASP	CB-CG-OD2	5.39	123.15	118.30

Continued on next page...

Continued from previous page...

Mol	Chain	Res	Type	Atoms	Z	Observed(°)	Ideal(°)
1	A	381	ASP	CB-CG-OD2	5.18	122.96	118.30
1	A	361	ARG	NE-CZ-NH2	-5.14	117.73	120.30
1	A	108	ASP	CB-CG-OD2	5.06	122.85	118.30

There are no chirality outliers.

All (1) planarity outliers are listed below:

Mol	Chain	Res	Type	Group
1	A	212	ALA	Peptide

5.2 Too-close contacts

In the following table, the Non-H and H(model) columns list the number of non-hydrogen atoms and hydrogen atoms in the chain respectively. The H(added) column lists the number of hydrogen atoms added and optimized by MolProbity. The Clashes column lists the number of clashes within the asymmetric unit, whereas Symm-Clashes lists symmetry-related clashes.

Mol	Chain	Non-H	H(model)	H(added)	Clashes	Symm-Clashes
1	A	3363	0	3355	33	0
2	A	24	0	18	0	0
3	A	6	0	8	0	0
4	A	243	0	0	6	0
All	All	3636	0	3381	33	0

The all-atom clashscore is defined as the number of clashes found per 1000 atoms (including hydrogen atoms). The all-atom clashscore for this structure is 5.

All (33) close contacts within the same asymmetric unit are listed below, sorted by their clash magnitude.

Atom-1	Atom-2	Interatomic distance (Å)	Clash overlap (Å)
1:A:225:ASP:O	1:A:228:ARG:HD3	1.53	1.08
1:A:468:ARG:HH21	1:A:468:ARG:HG3	1.33	0.93
1:A:354:ALA:H	1:A:363:ASN:ND2	1.84	0.75
1:A:83:THR:HB	1:A:291:GLN:HG2	1.71	0.71
1:A:468:ARG:HG3	1:A:468:ARG:NH2	2.12	0.63
1:A:468:ARG:HH21	1:A:468:ARG:CG	2.12	0.60
1:A:460:ILE:N	1:A:461:PRO:CD	2.67	0.57
1:A:134:ASN:HD22	1:A:273:THR:H	1.58	0.52
1:A:42:LYS:HB2	1:A:437:GLN:HE21	1.75	0.51

Continued on next page...

Continued from previous page...

Atom-1	Atom-2	Interatomic distance (Å)	Clash overlap (Å)
1:A:83:THR:HG23	4:A:1072:HOH:O	2.10	0.50
1:A:59:LEU:HD11	1:A:361:ARG:HA	1.95	0.48
1:A:95:GLY:HA2	1:A:127:GLY:O	2.13	0.48
1:A:195:TYR:HE1	4:A:1218:HOH:O	1.96	0.48
1:A:463:VAL:O	1:A:467:SER:OG	2.28	0.47
1:A:426:ASN:HD22	1:A:445:LEU:H	1.63	0.47
1:A:154:ASN:H	1:A:154:ASN:ND2	2.13	0.46
1:A:435:SER:OG	1:A:477:ASN:O	2.33	0.46
1:A:362:HIS:CE1	4:A:1148:HOH:O	2.68	0.45
1:A:238:ARG:HD3	1:A:240:GLU:O	2.16	0.45
1:A:402:ARG:HG2	1:A:405:LEU:HG	1.99	0.45
1:A:102:VAL:HG22	1:A:136:LEU:HD12	1.99	0.45
1:A:322:ARG:HH12	1:A:343:GLN:HE22	1.65	0.44
1:A:218:GLU:O	1:A:233:GLY:HA3	2.18	0.44
1:A:154:ASN:H	1:A:154:ASN:HD22	1.67	0.43
1:A:53:HIS:HB3	1:A:56:GLN:HG2	2.02	0.42
1:A:53:HIS:HB3	1:A:56:GLN:CG	2.51	0.41
1:A:55:GLN:HG3	4:A:1091:HOH:O	2.20	0.41
1:A:354:ALA:H	1:A:363:ASN:HD22	1.64	0.41
1:A:464:ARG:HA	1:A:464:ARG:HD3	1.94	0.41
1:A:113:ARG:HD2	4:A:1196:HOH:O	2.21	0.40
1:A:208:PRO:O	1:A:210:GLY:N	2.54	0.40
1:A:468:ARG:NH2	1:A:468:ARG:CG	2.76	0.40
1:A:362:HIS:HE1	4:A:1148:HOH:O	2.03	0.40

There are no symmetry-related clashes.

5.3 Torsion angles [i](#)

5.3.1 Protein backbone [i](#)

In the following table, the Percentiles column shows the percent Ramachandran outliers of the chain as a percentile score with respect to all X-ray entries followed by that with respect to entries of similar resolution.

The Analysed column shows the number of residues for which the backbone conformation was analysed, and the total number of residues.

Mol	Chain	Analysed	Favoured	Allowed	Outliers	Percentiles
1	A	438/458 (96%)	427 (98%)	10 (2%)	1 (0%)	44 27

All (1) Ramachandran outliers are listed below:

Mol	Chain	Res	Type
1	A	209	ARG

5.3.2 Protein sidechains [i](#)

In the following table, the Percentiles column shows the percent sidechain outliers of the chain as a percentile score with respect to all X-ray entries followed by that with respect to entries of similar resolution.

The Analysed column shows the number of residues for which the sidechain conformation was analysed, and the total number of residues.

Mol	Chain	Analysed	Rotameric	Outliers	Percentiles
1	A	356/370 (96%)	343 (96%)	13 (4%)	29 8

All (13) residues with a non-rotameric sidechain are listed below:

Mol	Chain	Res	Type
1	A	28	THR
1	A	83	THR
1	A	97	LEU
1	A	114	GLN
1	A	176	VAL
1	A	191	ARG
1	A	228	ARG
1	A	231	LEU
1	A	238	ARG
1	A	364	LEU
1	A	460	ILE
1	A	464	ARG
1	A	467	SER

Sometimes sidechains can be flipped to improve hydrogen bonding and reduce clashes. All (15) such sidechains are listed below:

Mol	Chain	Res	Type
1	A	41	GLN
1	A	53	HIS
1	A	130	GLN
1	A	134	ASN
1	A	154	ASN
1	A	237	GLN

Continued on next page...

Continued from previous page...

Mol	Chain	Res	Type
1	A	249	GLN
1	A	277	GLN
1	A	343	GLN
1	A	363	ASN
1	A	382	ASN
1	A	385	ASN
1	A	400	GLN
1	A	426	ASN
1	A	437	GLN

5.3.3 RNA [i](#)

There are no RNA molecules in this entry.

5.4 Non-standard residues in protein, DNA, RNA chains [i](#)

There are no non-standard protein/DNA/RNA residues in this entry.

5.5 Carbohydrates [i](#)

There are no oligosaccharides in this entry.

5.6 Ligand geometry [i](#)

2 ligands are modelled in this entry.

In the following table, the Counts columns list the number of bonds (or angles) for which Mogul statistics could be retrieved, the number of bonds (or angles) that are observed in the model and the number of bonds (or angles) that are defined in the Chemical Component Dictionary. The Link column lists molecule types, if any, to which the group is linked. The Z score for a bond length (or angle) is the number of standard deviations the observed value is removed from the expected value. A bond length (or angle) with $|Z| > 2$ is considered an outlier worth inspection. RMSZ is the root-mean-square of all Z scores of the bond lengths (or angles).

Mol	Type	Chain	Res	Link	Bond lengths			Bond angles		
					Counts	RMSZ	$\# Z > 2$	Counts	RMSZ	$\# Z > 2$
2	35P	A	501	1	20,25,25	1.42	1 (5%)	26,35,35	1.26	4 (15%)
3	GOL	A	601	-	5,5,5	0.20	0	5,5,5	0.41	0

In the following table, the Chirals column lists the number of chiral outliers, the number of chiral

centers analysed, the number of these observed in the model and the number defined in the Chemical Component Dictionary. Similar counts are reported in the Torsion and Rings columns. '-' means no outliers of that kind were identified.

Mol	Type	Chain	Res	Link	Chirals	Torsions	Rings
2	35P	A	501	1	-	0/13/34/34	0/2/2/2
3	GOL	A	601	-	-	3/4/4/4	-

All (1) bond length outliers are listed below:

Mol	Chain	Res	Type	Atoms	Z	Observed(Å)	Ideal(Å)
2	A	501	35P	C10-S11	-4.68	1.76	1.85

All (4) bond angle outliers are listed below:

Mol	Chain	Res	Type	Atoms	Z	Observed(°)	Ideal(°)
2	A	501	35P	C2-C3-N4	2.80	121.26	116.41
2	A	501	35P	C10-S11-C8	2.71	100.28	93.41
2	A	501	35P	C9-C10-S11	-2.28	99.52	103.86
2	A	501	35P	C10-C9-C13	-2.17	108.27	112.37

There are no chirality outliers.

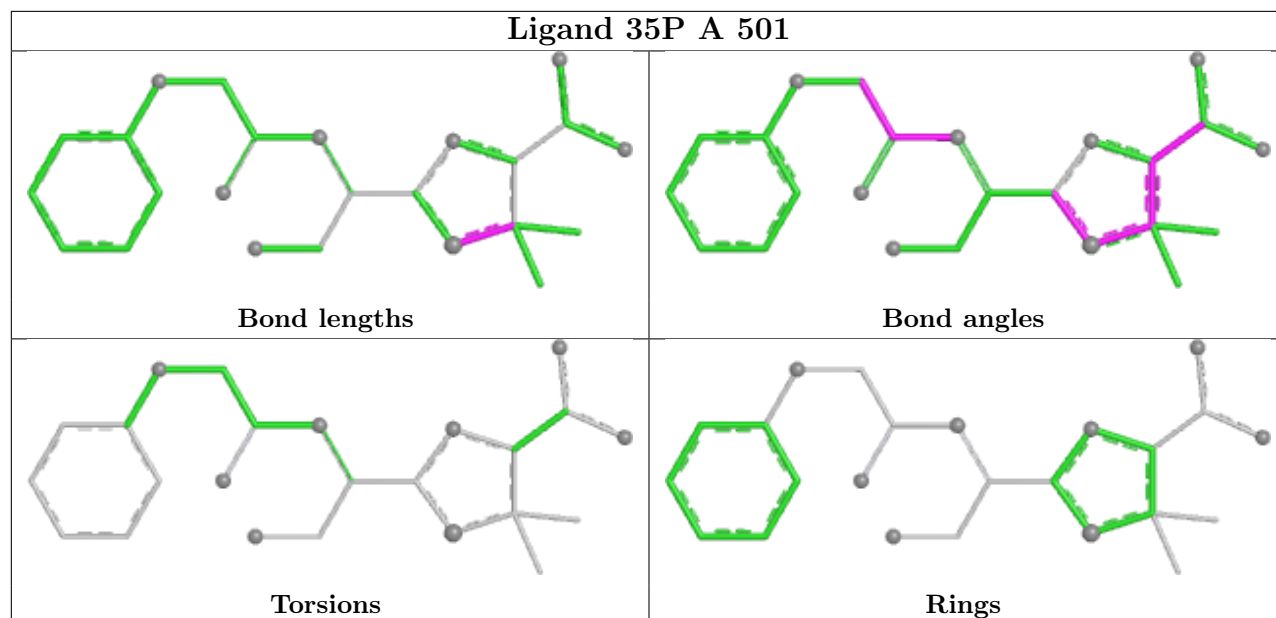
All (3) torsion outliers are listed below:

Mol	Chain	Res	Type	Atoms
3	A	601	GOL	O1-C1-C2-O2
3	A	601	GOL	O1-C1-C2-C3
3	A	601	GOL	O2-C2-C3-O3

There are no ring outliers.

No monomer is involved in short contacts.

The following is a two-dimensional graphical depiction of Mogul quality analysis of bond lengths, bond angles, torsion angles, and ring geometry for all instances of the Ligand of Interest. In addition, ligands with molecular weight > 250 and outliers as shown on the validation Tables will also be included. For torsion angles, if less than 5% of the Mogul distribution of torsion angles is within 10 degrees of the torsion angle in question, then that torsion angle is considered an outlier. Any bond that is central to one or more torsion angles identified as an outlier by Mogul will be highlighted in the graph. For rings, the root-mean-square deviation (RMSD) between the ring in question and similar rings identified by Mogul is calculated over all ring torsion angles. If the average RMSD is greater than 60 degrees and the minimal RMSD between the ring in question and any Mogul-identified rings is also greater than 60 degrees, then that ring is considered an outlier. The outliers are highlighted in purple. The color gray indicates Mogul did not find sufficient equivalents in the CSD to analyse the geometry.



5.7 Other polymers [i](#)

There are no such residues in this entry.

5.8 Polymer linkage issues [i](#)

There are no chain breaks in this entry.

6 Fit of model and data

6.1 Protein, DNA and RNA chains

In the following table, the column labelled ‘#RSRZ > 2’ contains the number (and percentage) of RSRZ outliers, followed by percent RSRZ outliers for the chain as percentile scores relative to all X-ray entries and entries of similar resolution. The OWAB column contains the minimum, median, 95th percentile and maximum values of the occupancy-weighted average B-factor per residue. The column labelled ‘Q < 0.9’ lists the number of (and percentage) of residues with an average occupancy less than 0.9.

Mol	Chain	Analysed	<RSRZ>	#RSRZ>2	OWAB(Å ²)	Q<0.9
1	A	442/458 (96%)	0.26	26 (5%) 29 32	20, 29, 51, 67	0

All (26) RSRZ outliers are listed below:

Mol	Chain	Res	Type	RSRZ
1	A	28	THR	5.0
1	A	210	GLY	4.8
1	A	212	ALA	4.4
1	A	31	PRO	4.2
1	A	460	ILE	4.1
1	A	32	ALA	3.9
1	A	211	SER	3.7
1	A	30	LEU	3.4
1	A	461	PRO	3.3
1	A	468	ARG	3.0
1	A	195	TYR	3.0
1	A	450	VAL	3.0
1	A	437	GLN	2.8
1	A	208	PRO	2.7
1	A	447	GLY	2.7
1	A	207	LEU	2.7
1	A	181	ALA	2.6
1	A	187	MET	2.5
1	A	449	ALA	2.3
1	A	401[A]	TYR	2.3
1	A	189	PHE	2.3
1	A	35	ASN	2.3
1	A	396	ASP	2.2
1	A	184	PRO	2.2
1	A	92	VAL	2.1
1	A	463	VAL	2.1

6.2 Non-standard residues in protein, DNA, RNA chains [i](#)

There are no non-standard protein/DNA/RNA residues in this entry.

6.3 Carbohydrates [i](#)

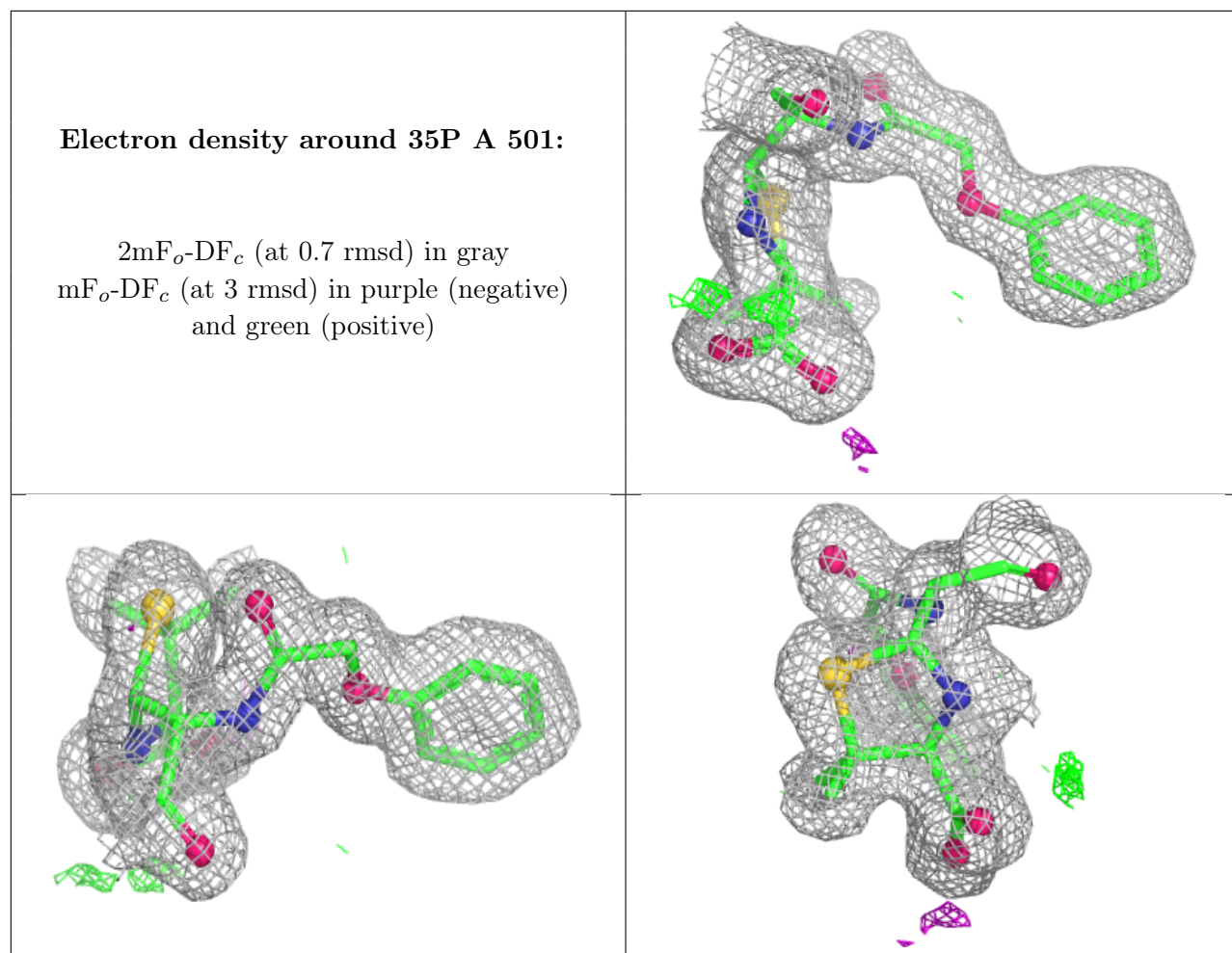
There are no monosaccharides in this entry.

6.4 Ligands [i](#)

In the following table, the Atoms column lists the number of modelled atoms in the group and the number defined in the chemical component dictionary. The B-factors column lists the minimum, median, 95th percentile and maximum values of B factors of atoms in the group. The column labelled 'Q< 0.9' lists the number of atoms with occupancy less than 0.9.

Mol	Type	Chain	Res	Atoms	RSCC	RSR	B-factors(\AA^2)	Q<0.9
3	GOL	A	601	6/6	0.85	0.14	32,43,44,48	0
2	35P	A	501	24/24	0.96	0.08	21,31,37,38	0

The following is a graphical depiction of the model fit to experimental electron density of all instances of the Ligand of Interest. In addition, ligands with molecular weight > 250 and outliers as shown on the geometry validation Tables will also be included. Each fit is shown from different orientation to approximate a three-dimensional view.



6.5 Other polymers [i](#)

There are no such residues in this entry.