



Full wwPDB X-ray Structure Validation Report ⓘ

Nov 21, 2023 – 07:26 AM JST

PDB ID : 7F08
Title : Crystal Structure of K8
Authors : Huang, S.X.; Yan, Y.J.
Deposited on : 2021-06-03
Resolution : 3.16 Å(reported)

This is a Full wwPDB X-ray Structure Validation Report for a publicly released PDB entry.

We welcome your comments at validation@mail.wwpdb.org

A user guide is available at

<https://www.wwpdb.org/validation/2017/XrayValidationReportHelp>

with specific help available everywhere you see the ⓘ symbol.

The types of validation reports are described at

<http://www.wwpdb.org/validation/2017/FAQs#types>.

The following versions of software and data (see [references ⓘ](#)) were used in the production of this report:

MolProbity : 4.02b-467
Mogul : 1.8.5 (274361), CSD as541be (2020)
Xtriage (Phenix) : 1.13
EDS : 2.36
buster-report : 1.1.7 (2018)
Percentile statistics : 20191225.v01 (using entries in the PDB archive December 25th 2019)
Refmac : 5.8.0158
CCP4 : 7.0.044 (Gargrove)
Ideal geometry (proteins) : Engh & Huber (2001)
Ideal geometry (DNA, RNA) : Parkinson et al. (1996)
Validation Pipeline (wwPDB-VP) : 2.36

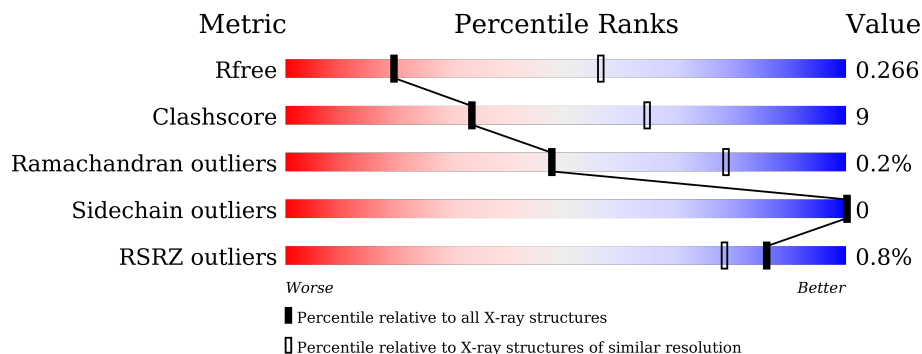
1 Overall quality at a glance

The following experimental techniques were used to determine the structure:

X-RAY DIFFRACTION

The reported resolution of this entry is 3.16 Å.

Percentile scores (ranging between 0-100) for global validation metrics of the entry are shown in the following graphic. The table shows the number of entries on which the scores are based.



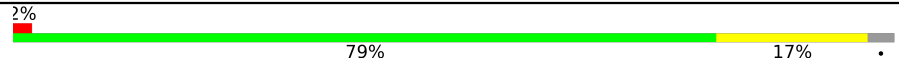

Metric	Whole archive (#Entries)	Similar resolution (#Entries, resolution range(Å))
R_{free}	130704	1665 (3.20-3.12)
Clashscore	141614	1804 (3.20-3.12)
Ramachandran outliers	138981	1770 (3.20-3.12)
Sidechain outliers	138945	1769 (3.20-3.12)
RSRZ outliers	127900	1616 (3.20-3.12)

The table below summarises the geometric issues observed across the polymeric chains and their fit to the electron density. The red, orange, yellow and green segments of the lower bar indicate the fraction of residues that contain outliers for ≥ 3 , 2, 1 and 0 types of geometric quality criteria respectively. A grey segment represents the fraction of residues that are not modelled. The numeric value for each fraction is indicated below the corresponding segment, with a dot representing fractions $\leq 5\%$. The upper red bar (where present) indicates the fraction of residues that have poor fit to the electron density. The numeric value is given above the bar.

Mol	Chain	Length	Quality of chain
1	B	393	
1	D	393	
1	F	393	
1	H	393	
1	J	393	
1	L	393	

Continued on next page...

Continued from previous page...

Mol	Chain	Length	Quality of chain
1	N	393	 2% 79% 17%
1	P	393	 2% 78% 18%

2 Entry composition

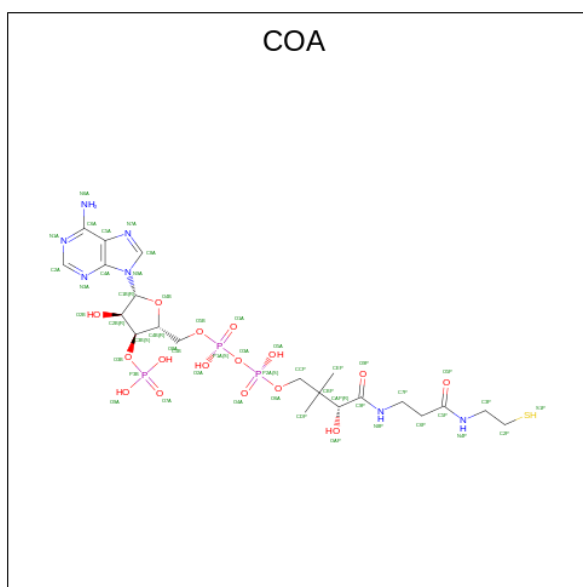
There are 2 unique types of molecules in this entry. The entry contains 23432 atoms, of which 0 are hydrogens and 0 are deuteriums.

In the tables below, the ZeroOcc column contains the number of atoms modelled with zero occupancy, the AltConf column contains the number of residues with at least one atom in alternate conformation and the Trace column contains the number of residues modelled with at most 2 atoms.

- Molecule 1 is a protein called chalcone synthase.

Mol	Chain	Residues	Atoms					ZeroOcc	AltConf	Trace
			Total	C	N	O	S			
1	B	377	2896	1841	502	539	14	0	0	0
1	D	377	2896	1841	502	539	14	0	0	0
1	F	377	2896	1841	502	539	14	0	0	0
1	H	379	2918	1853	510	541	14	0	0	0
1	J	379	2914	1852	507	541	14	0	0	0
1	L	377	2896	1841	502	539	14	0	0	0
1	N	380	2925	1858	511	542	14	0	0	0
1	P	378	2903	1846	503	540	14	0	0	0

- Molecule 2 is COENZYME A (three-letter code: COA) (formula: $C_{21}H_{36}N_7O_{16}P_3S$).

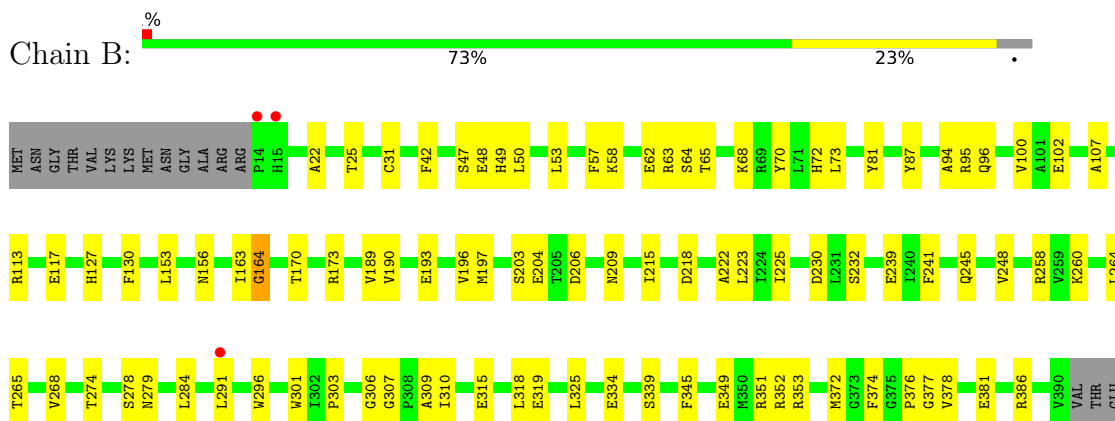


Mol	Chain	Residues	Atoms					ZeroOcc	AltConf
			Total	C	N	O	P		
2	B	1	Total 47	C 21	N 7	O 16	P 3	0	0
2	D	1	Total 47	C 21	N 7	O 16	P 3	0	0
2	J	1	Total 47	C 21	N 7	O 16	P 3	0	0
2	L	1	Total 47	C 21	N 7	O 16	P 3	0	0

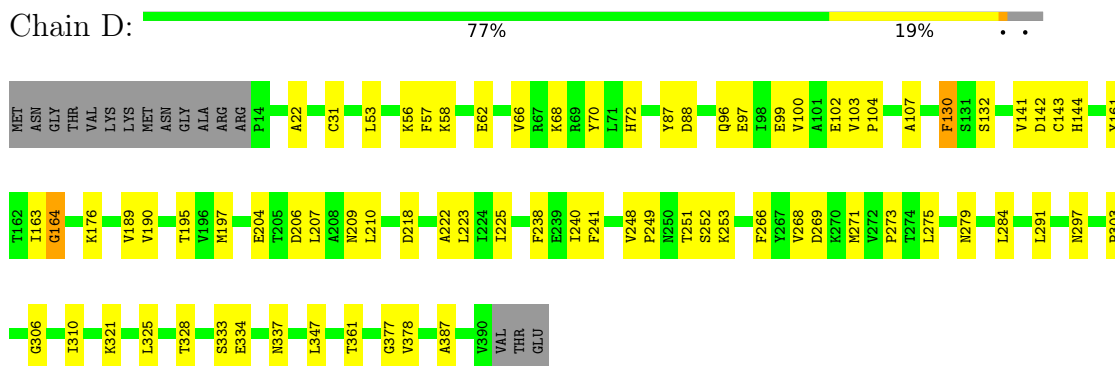
3 Residue-property plots [i](#)

These plots are drawn for all protein, RNA, DNA and oligosaccharide chains in the entry. The first graphic for a chain summarises the proportions of the various outlier classes displayed in the second graphic. The second graphic shows the sequence view annotated by issues in geometry and electron density. Residues are color-coded according to the number of geometric quality criteria for which they contain at least one outlier: green = 0, yellow = 1, orange = 2 and red = 3 or more. A red dot above a residue indicates a poor fit to the electron density ($RSRZ > 2$). Stretches of 2 or more consecutive residues without any outlier are shown as a green connector. Residues present in the sample, but not in the model, are shown in grey.

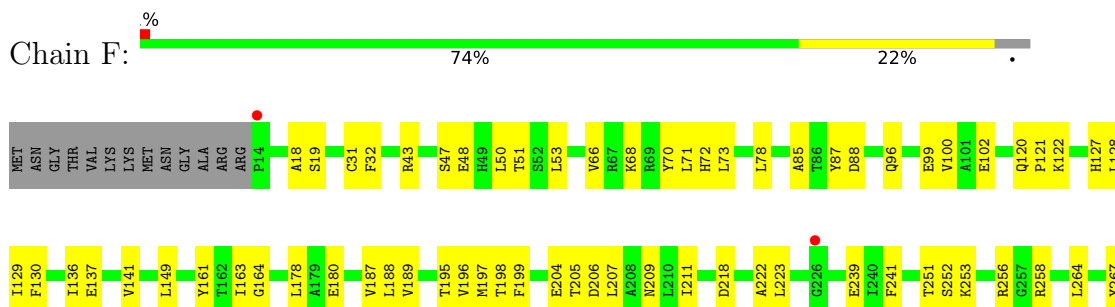
- Molecule 1: chalcone synthase

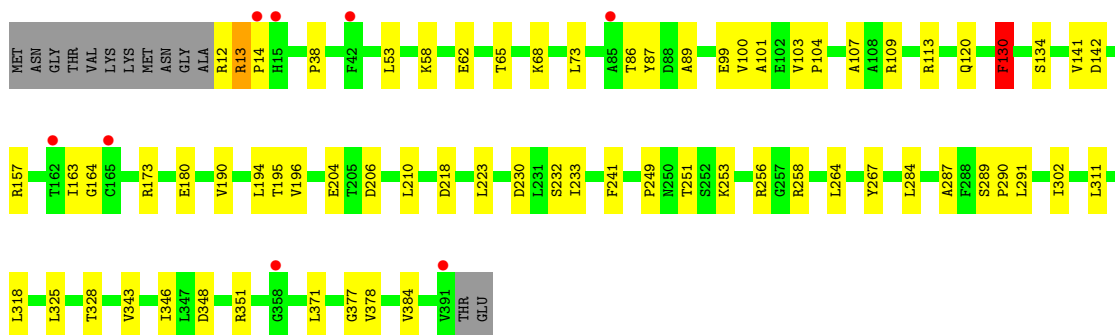


- Molecule 1: chalcone synthase

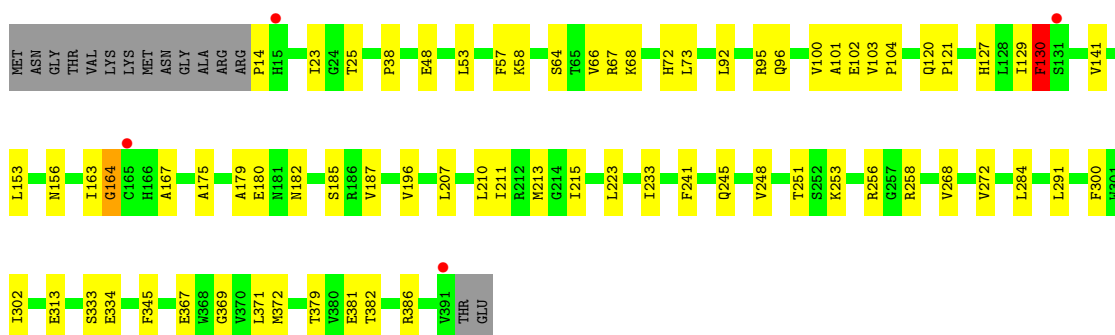
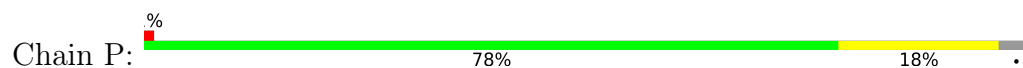


- Molecule 1: chalcone synthase





- Molecule 1: chalcone synthase



4 Data and refinement statistics

Property	Value	Source
Space group	P 1	Depositor
Cell constants a, b, c, α , β , γ	52.15Å 117.33Å 132.88Å 109.73° 90.19° 91.18°	Depositor
Resolution (Å)	45.18 – 3.16 45.18 – 3.16	Depositor EDS
% Data completeness (in resolution range)	89.9 (45.18-3.16) 89.9 (45.18-3.16)	Depositor EDS
R_{merge}	0.10	Depositor
R_{sym}	(Not available)	Depositor
$\langle I/\sigma(I) \rangle$ ¹	2.14 (at 3.19Å)	Xtrriage
Refinement program	REFMAC 1.18.1_3865	Depositor
R, R_{free}	0.180 , 0.263 0.186 , 0.266	Depositor DCC
R_{free} test set	2286 reflections (5.00%)	wwPDB-VP
Wilson B-factor (Å ²)	71.4	Xtrriage
Anisotropy	0.022	Xtrriage
Bulk solvent k_{sol} (e/Å ³), B_{sol} (Å ²)	0.30 , 33.2	EDS
L-test for twinning ²	$\langle L \rangle = 0.49$, $\langle L^2 \rangle = 0.31$	Xtrriage
Estimated twinning fraction	0.079 for h,-k,-l	Xtrriage
F_o, F_c correlation	0.93	EDS
Total number of atoms	23432	wwPDB-VP
Average B, all atoms (Å ²)	61.0	wwPDB-VP

Xtrriage's analysis on translational NCS is as follows: *The largest off-origin peak in the Patterson function is 4.43% of the height of the origin peak. No significant pseudotranslation is detected.*

¹Intensities estimated from amplitudes.

²Theoretical values of $\langle |L| \rangle$, $\langle L^2 \rangle$ for acentric reflections are 0.5, 0.333 respectively for untwinned datasets, and 0.375, 0.2 for perfectly twinned datasets.

5 Model quality i

5.1 Standard geometry i

Bond lengths and bond angles in the following residue types are not validated in this section: COA

The Z score for a bond length (or angle) is the number of standard deviations the observed value is removed from the expected value. A bond length (or angle) with $|Z| > 5$ is considered an outlier worth inspection. RMSZ is the root-mean-square of all Z scores of the bond lengths (or angles).

Mol	Chain	Bond lengths		Bond angles	
		RMSZ	# Z >5	RMSZ	# Z >5
1	B	0.50	0/2953	0.74	3/4000 (0.1%)
1	D	0.53	1/2953 (0.0%)	0.75	1/4000 (0.0%)
1	F	0.57	1/2953 (0.0%)	0.79	2/4000 (0.1%)
1	H	0.54	2/2975 (0.1%)	0.80	2/4029 (0.0%)
1	J	0.49	0/2971	0.74	3/4025 (0.1%)
1	L	0.52	2/2953 (0.1%)	0.74	4/4000 (0.1%)
1	N	0.50	0/2982	0.75	3/4039 (0.1%)
1	P	0.54	0/2960	0.75	2/4010 (0.0%)
All	All	0.52	6/23700 (0.0%)	0.76	20/32103 (0.1%)

Chiral center outliers are detected by calculating the chiral volume of a chiral center and verifying if the center is modelled as a planar moiety or with the opposite hand. A planarity outlier is detected by checking planarity of atoms in a peptide group, atoms in a mainchain group or atoms of a sidechain that are expected to be planar.

Mol	Chain	#Chirality outliers	#Planarity outliers
1	B	0	2
1	D	0	1
1	J	0	1
1	N	0	1
1	P	0	1
All	All	0	6

All (6) bond length outliers are listed below:

Mol	Chain	Res	Type	Atoms	Z	Observed(Å)	Ideal(Å)
1	H	80	GLU	CG-CD	-7.52	1.40	1.51
1	L	116	GLU	CG-CD	6.51	1.61	1.51
1	D	97	GLU	CD-OE1	6.18	1.32	1.25
1	L	116	GLU	CB-CG	5.88	1.63	1.52
1	F	321	LYS	CB-CG	-5.69	1.37	1.52

Continued on next page...

Continued from previous page...

Mol	Chain	Res	Type	Atoms	Z	Observed(Å)	Ideal(Å)
1	H	80	GLU	CB-CG	-5.50	1.41	1.52

All (20) bond angle outliers are listed below:

Mol	Chain	Res	Type	Atoms	Z	Observed(°)	Ideal(°)
1	H	284	LEU	CA-CB-CG	8.71	135.32	115.30
1	J	284	LEU	CA-CB-CG	7.61	132.80	115.30
1	L	178	LEU	CB-CG-CD2	-6.81	99.42	111.00
1	N	130	PHE	CB-CG-CD2	-6.36	116.35	120.80
1	L	284	LEU	CA-CB-CG	6.27	129.71	115.30
1	F	73	LEU	CB-CG-CD2	-6.21	100.44	111.00
1	H	148	LEU	CA-CB-CG	6.15	129.45	115.30
1	N	284	LEU	CA-CB-CG	6.06	129.24	115.30
1	P	284	LEU	CA-CB-CG	5.93	128.94	115.30
1	B	53	LEU	CA-CB-CG	5.77	128.58	115.30
1	J	130	PHE	CB-CG-CD2	-5.73	116.79	120.80
1	B	284	LEU	CA-CB-CG	5.68	128.36	115.30
1	J	351	ARG	NE-CZ-NH1	-5.63	117.49	120.30
1	F	284	LEU	CA-CB-CG	5.46	127.87	115.30
1	P	130	PHE	CB-CG-CD2	-5.45	116.98	120.80
1	N	223	LEU	CA-CB-CG	5.42	127.76	115.30
1	L	319	GLU	CA-CB-CG	5.35	125.16	113.40
1	B	73	LEU	CB-CG-CD2	-5.16	102.23	111.00
1	D	284	LEU	CA-CB-CG	5.13	127.09	115.30
1	L	63	ARG	NE-CZ-NH1	5.10	122.85	120.30

There are no chirality outliers.

All (6) planarity outliers are listed below:

Mol	Chain	Res	Type	Group
1	B	130	PHE	Sidechain
1	B	87	TYR	Peptide
1	D	130	PHE	Sidechain
1	J	130	PHE	Sidechain
1	N	130	PHE	Sidechain
1	P	130	PHE	Sidechain

5.2 Too-close contacts [\(i\)](#)

In the following table, the Non-H and H(model) columns list the number of non-hydrogen atoms and hydrogen atoms in the chain respectively. The H(added) column lists the number of hydrogen

atoms added and optimized by MolProbity. The Clashes column lists the number of clashes within the asymmetric unit, whereas Symm-Clashes lists symmetry-related clashes.

Mol	Chain	Non-H	H(model)	H(added)	Clashes	Symm-Clashes
1	B	2896	0	2952	62	0
1	D	2896	0	2952	49	0
1	F	2896	0	2953	63	0
1	H	2918	0	2978	54	1
1	J	2914	0	2973	53	0
1	L	2896	0	2952	55	0
1	N	2925	0	2987	49	0
1	P	2903	0	2962	48	0
2	B	47	0	29	8	0
2	D	47	0	29	1	0
2	J	47	0	29	4	0
2	L	47	0	27	6	0
All	All	23432	0	23823	406	1

The all-atom clashscore is defined as the number of clashes found per 1000 atoms (including hydrogen atoms). The all-atom clashscore for this structure is 9.

All (406) close contacts within the same asymmetric unit are listed below, sorted by their clash magnitude.

Atom-1	Atom-2	Interatomic distance (Å)	Clash overlap (Å)
1:L:248:VAL:HG22	1:L:279:ASN:HD22	1.31	0.94
1:B:206:ASP:OD2	1:B:209:ASN:ND2	2.04	0.90
1:H:297:ASN:HB3	1:H:321:LYS:NZ	1.88	0.89
1:B:309:ALA:HB3	2:B:401:COA:H133	1.56	0.87
1:J:67:ARG:NH1	1:L:116:GLU:O	2.10	0.83
1:D:248:VAL:HG22	1:D:279:ASN:HD22	1.43	0.83
1:D:141:VAL:HA	1:D:144:HIS:HD2	1.45	0.81
1:L:68:LYS:NZ	1:L:334:GLU:OE1	2.12	0.81
1:B:307:GLY:HA3	2:B:401:COA:H141	1.61	0.81
1:P:48:GLU:N	1:P:48:GLU:OE1	2.13	0.80
1:L:307:GLY:HA3	2:L:401:COA:H131	1.65	0.77
1:H:13:ARG:HD2	1:N:13:ARG:HD3	1.64	0.77
1:B:48:GLU:OE1	1:B:48:GLU:N	2.16	0.77
1:F:206:ASP:OD2	1:F:209:ASN:ND2	2.17	0.76
1:B:248:VAL:HG22	1:B:279:ASN:HD22	1.50	0.76
1:H:297:ASN:HB3	1:H:321:LYS:HZ1	1.51	0.75
1:L:206:ASP:OD2	1:L:209:ASN:ND2	2.20	0.75
1:H:223:LEU:HD21	1:H:344:LEU:HD22	1.69	0.74
1:J:206:ASP:OD2	1:J:209:ASN:ND2	2.20	0.74

Continued on next page...

Continued from previous page...

Atom-1	Atom-2	Interatomic distance (Å)	Clash overlap (Å)
1:D:141:VAL:HA	1:D:144:HIS:CD2	2.23	0.74
1:D:72:HIS:CE1	1:D:102:GLU:HG3	2.22	0.74
1:F:321:LYS:NZ	1:L:231:LEU:O	2.21	0.73
1:B:113:ARG:NH1	1:D:62:GLU:OE1	2.22	0.73
1:P:127:HIS:HB2	1:P:187:VAL:HG22	1.71	0.72
1:B:268:VAL:HG21	2:B:401:COA:H62	1.72	0.71
1:J:195:THR:N	1:J:218:ASP:OD1	2.21	0.70
1:H:13:ARG:NH1	1:H:181:ASN:OD1	2.24	0.70
1:J:185:SER:O	1:J:186:ARG:NH1	2.25	0.69
1:F:241:PHE:CE2	1:F:291:LEU:HD21	2.27	0.68
1:F:51:THR:OG1	1:N:253:LYS:HE2	1.93	0.68
1:F:128:LEU:HD13	1:F:188:LEU:HD23	1.75	0.68
1:F:321:LYS:HZ1	1:L:231:LEU:HB3	1.59	0.68
1:J:248:VAL:HG22	1:J:279:ASN:HD22	1.58	0.68
1:F:96:GLN:O	1:F:100:VAL:HG22	1.94	0.67
1:F:68:LYS:NZ	1:F:334:GLU:OE1	2.25	0.67
1:B:113:ARG:HH11	1:D:58:LYS:HE3	1.59	0.67
1:F:53:LEU:HD13	1:F:204:GLU:HG2	1.76	0.67
1:J:241:PHE:CE2	1:J:291:LEU:HD21	2.30	0.67
1:N:73:LEU:HG	1:N:196:VAL:HG22	1.75	0.67
1:F:205:THR:HB	1:H:80:GLU:CD	2.15	0.66
1:F:78:LEU:HD22	1:F:85:ALA:HB2	1.78	0.66
1:D:87:TYR:HD2	1:D:88:ASP:HB2	1.61	0.65
1:B:47:SER:HB3	1:B:50:LEU:HD12	1.78	0.65
1:L:163:ILE:HB	1:L:164:GLY:HA2	1.78	0.65
1:F:251:THR:HB	1:F:378:VAL:HG23	1.78	0.64
1:B:63:ARG:HG2	2:B:401:COA:O1A	1.95	0.64
1:D:268:VAL:HG11	2:D:401:COA:H61	1.79	0.64
1:L:281:GLU:O	1:L:285:ASP:HB2	1.97	0.64
1:B:248:VAL:HG22	1:B:279:ASN:ND2	2.13	0.64
1:F:122:LYS:NZ	1:F:149:LEU:O	2.29	0.63
1:F:205:THR:HB	1:H:80:GLU:OE1	1.98	0.63
1:F:99:GLU:OE2	1:F:196:VAL:HB	1.98	0.63
1:P:67:ARG:NH2	1:P:334:GLU:OE2	2.21	0.63
1:H:297:ASN:HB3	1:H:321:LYS:HZ3	1.63	0.63
1:H:72:HIS:NE2	1:H:102:GLU:HG3	2.13	0.63
1:H:241:PHE:CE2	1:H:291:LEU:HD21	2.33	0.63
1:J:248:VAL:HG22	1:J:279:ASN:ND2	2.12	0.63
1:H:251:THR:HB	1:H:378:VAL:HG23	1.80	0.62
1:H:53:LEU:HD11	1:H:210:LEU:HD11	1.82	0.62
1:H:137:GLU:OE2	1:N:258:ARG:NH1	2.31	0.62

Continued on next page...

Continued from previous page...

Atom-1	Atom-2	Interatomic distance (Å)	Clash overlap (Å)
1:D:56:LYS:HE2	1:D:207:LEU:HD13	1.82	0.62
1:N:53:LEU:HD11	1:N:210:LEU:HD11	1.82	0.62
1:F:328:THR:HG23	1:F:346:ILE:HD13	1.83	0.61
1:H:53:LEU:HD22	1:H:204:GLU:HG3	1.82	0.61
1:F:47:SER:HB3	1:F:50:LEU:HD12	1.83	0.61
1:J:302:ILE:HD12	1:J:346:ILE:HG22	1.82	0.61
1:P:302:ILE:HG21	1:P:371:LEU:HD12	1.81	0.61
1:L:343:VAL:HA	1:L:346:ILE:HD12	1.84	0.60
1:P:72:HIS:CE1	1:P:102:GLU:HG3	2.36	0.59
1:B:306:GLY:HA3	1:B:310:ILE:HD12	1.83	0.59
1:N:12:ARG:O	1:N:13:ARG:HB2	2.02	0.59
1:D:72:HIS:NE2	1:D:102:GLU:HG3	2.18	0.59
1:B:25:THR:HB	1:B:345:PHE:CZ	2.37	0.58
1:F:300:PHE:CE1	1:F:369:GLY:HA3	2.38	0.58
1:J:31:CYS:SG	1:J:68:LYS:HD2	2.43	0.58
1:N:87:TYR:OH	1:N:206:ASP:OD2	2.15	0.58
1:F:223:LEU:HD21	1:F:344:LEU:HD22	1.85	0.58
1:H:298:SER:O	1:H:366:LEU:HD13	2.02	0.58
1:P:248:VAL:O	1:P:251:THR:OG1	2.21	0.58
1:L:309:ALA:HB3	2:L:401:COA:H132	1.85	0.58
1:D:249:PRO:O	1:D:251:THR:HG23	2.04	0.58
1:L:146:VAL:HA	1:L:151:LEU:HD12	1.86	0.58
1:B:193:GLU:HG3	1:B:339:SER:HB2	1.86	0.58
1:F:130:PHE:CE2	1:F:141:VAL:HG23	2.39	0.58
1:H:348:ASP:O	1:H:351:ARG:HG2	2.03	0.58
1:J:72:HIS:CE1	1:J:102:GLU:HG3	2.38	0.58
1:D:241:PHE:CE2	1:D:291:LEU:HD21	2.38	0.58
1:L:47:SER:HB3	1:L:50:LEU:HD12	1.86	0.58
1:N:163:ILE:HB	1:N:164:GLY:HA2	1.86	0.58
1:L:211:ILE:HD11	2:L:401:COA:N1A	2.19	0.57
1:H:248:VAL:HG22	1:H:279:ASN:HD22	1.68	0.57
1:J:32:PHE:CE2	1:J:71:LEU:HB2	2.40	0.57
1:L:173:ARG:NH2	1:L:381:GLU:OE1	2.37	0.57
1:J:87:TYR:HD2	1:J:88:ASP:HB2	1.70	0.57
1:F:129:ILE:HD11	1:F:178:LEU:HD22	1.85	0.57
1:P:72:HIS:NE2	1:P:102:GLU:HG3	2.19	0.57
1:F:127:HIS:HB2	1:F:187:VAL:HG22	1.88	0.56
1:N:14:PRO:HD2	1:N:180:GLU:O	2.05	0.56
1:B:309:ALA:HB3	2:B:401:COA:CDP	2.33	0.56
1:F:321:LYS:NZ	1:L:231:LEU:HB3	2.20	0.56
1:F:198:THR:HG22	1:F:264:LEU:HB3	1.88	0.56

Continued on next page...

Continued from previous page...

Atom-1	Atom-2	Interatomic distance (Å)	Clash overlap (Å)
1:F:136:ILE:HG13	1:F:161:TYR:CD1	2.40	0.56
1:J:223:LEU:HD21	1:J:344:LEU:HD22	1.88	0.56
1:P:23:ILE:HG12	1:P:223:LEU:CD2	2.35	0.56
1:F:137:GLU:OE2	1:P:258:ARG:NH1	2.26	0.56
1:F:251:THR:OG1	1:F:378:VAL:N	2.33	0.56
1:N:38:PRO:HG2	1:N:58:LYS:HG3	1.87	0.56
1:F:31:CYS:SG	1:F:68:LYS:HD2	2.46	0.55
1:F:195:THR:N	1:F:218:ASP:OD1	2.40	0.55
1:F:321:LYS:CE	1:L:231:LEU:HB3	2.37	0.55
1:D:303:PRO:HD2	1:D:328:THR:OG1	2.07	0.54
1:H:87:TYR:HD2	1:H:88:ASP:HB2	1.71	0.54
1:D:142:ASP:OD1	1:D:143:CYS:N	2.41	0.54
1:N:302:ILE:HB	1:N:371:LEU:HA	1.89	0.54
1:P:130:PHE:CE2	1:P:141:VAL:HG23	2.42	0.54
1:H:20:ILE:HD12	1:H:238:PHE:HB2	1.89	0.54
1:B:309:ALA:CB	2:B:401:COA:H133	2.36	0.54
1:L:311:LEU:HD22	1:L:325:LEU:HD23	1.89	0.54
1:J:117:GLU:OE1	1:J:351:ARG:NH2	2.37	0.54
1:D:195:THR:N	1:D:218:ASP:OD1	2.33	0.53
1:L:268:VAL:HG13	1:L:272:VAL:HG21	1.90	0.53
1:B:274:THR:O	1:B:278:SER:HB2	2.09	0.53
1:L:326:ARG:HD3	1:L:353:ARG:HD3	1.91	0.53
1:B:372:MET:HB3	1:B:374:PHE:CE1	2.43	0.53
1:J:55:ASP:O	1:J:59:ARG:HG3	2.09	0.53
1:J:211:ILE:HD12	2:J:401:COA:H131	1.90	0.53
1:N:311:LEU:HD22	1:N:325:LEU:HD23	1.90	0.53
1:B:203:SER:HA	1:N:62:GLU:OE2	2.09	0.53
1:B:197:MET:HG2	1:B:264:LEU:HB2	1.91	0.53
1:J:127:HIS:CD2	1:J:156:ASN:HB2	2.43	0.53
1:D:107:ALA:HB1	1:D:190:VAL:HG11	1.92	0.52
1:L:195:THR:HG23	1:L:218:ASP:OD1	2.08	0.52
1:P:241:PHE:CE2	1:P:291:LEU:HD21	2.43	0.52
2:B:401:COA:O9A	2:B:401:COA:O2B	2.27	0.52
1:B:96:GLN:O	1:B:100:VAL:HG22	2.09	0.52
1:F:100:VAL:HG21	1:P:258:ARG:NH1	2.24	0.52
1:P:96:GLN:O	1:P:100:VAL:HG22	2.09	0.52
1:B:70:TYR:O	1:B:218:ASP:HB2	2.10	0.52
1:J:233:ILE:HG13	1:J:234:GLU:HG3	1.92	0.52
1:B:349:GLU:OE1	1:B:353:ARG:NH2	2.43	0.52
1:H:137:GLU:OE2	1:N:258:ARG:NE	2.42	0.52
1:H:142:ASP:OD2	1:H:157:ARG:HD2	2.10	0.52

Continued on next page...

Continued from previous page...

Atom-1	Atom-2	Interatomic distance (Å)	Clash overlap (Å)
1:B:95:ARG:NH1	1:B:196:VAL:O	2.43	0.51
1:L:327:ALA:HB1	1:L:349:GLU:HG3	1.91	0.51
1:P:207:LEU:O	1:P:211:ILE:HG12	2.10	0.51
1:J:13:ARG:NH1	1:J:181:ASN:OD1	2.43	0.51
1:N:253:LYS:HA	1:N:256:ARG:HG3	1.92	0.51
1:N:253:LYS:HD2	1:N:256:ARG:HD3	1.93	0.51
1:F:256:ARG:HB2	1:F:267:TYR:HB3	1.93	0.51
1:B:31:CYS:SG	1:B:68:LYS:HD2	2.51	0.51
1:J:127:HIS:HB2	1:J:187:VAL:HG22	1.92	0.51
1:L:101:ALA:O	1:L:104:PRO:HD2	2.11	0.51
1:D:176:LYS:NZ	1:D:240:ILE:O	2.39	0.51
1:B:163:ILE:HB	1:B:164:GLY:HA2	1.93	0.51
1:B:248:VAL:CG2	1:B:279:ASN:HD22	2.22	0.51
1:N:287:ALA:HB1	1:N:384:VAL:CG2	2.41	0.51
1:P:179:ALA:HA	1:P:185:SER:OG	2.11	0.50
1:N:302:ILE:HG21	1:N:371:LEU:HD12	1.93	0.50
1:N:289:SER:HB2	1:N:290:PRO:HD3	1.92	0.50
1:B:72:HIS:CE1	1:B:102:GLU:HG3	2.47	0.50
1:F:72:HIS:CE1	1:F:102:GLU:HG3	2.47	0.50
1:B:63:ARG:HG3	1:B:63:ARG:O	2.12	0.50
1:B:268:VAL:HG11	2:B:401:COA:H71	1.93	0.50
1:D:248:VAL:HG22	1:D:279:ASN:ND2	2.18	0.50
1:D:68:LYS:NZ	1:D:334:GLU:HG3	2.26	0.50
1:B:315:GLU:HG3	1:B:325:LEU:HD22	1.94	0.50
1:H:131:SER:HB3	1:H:191:CYS:SG	2.51	0.49
1:H:248:VAL:HG22	1:H:279:ASN:ND2	2.27	0.49
1:F:315:GLU:OE2	1:F:329:ARG:NH1	2.35	0.49
1:H:73:LEU:HA	1:H:77:LEU:HD12	1.95	0.49
1:B:258:ARG:NE	1:J:137:GLU:OE2	2.37	0.49
1:B:296:TRP:CD1	1:B:318:LEU:HD22	2.47	0.49
1:J:311:LEU:HD22	1:J:325:LEU:HD23	1.93	0.49
1:H:197:MET:HG2	1:H:264:LEU:HB2	1.94	0.49
1:N:109:ARG:HH11	1:N:113:ARG:NH2	2.11	0.49
1:F:66:VAL:HA	1:F:333:SER:HA	1.95	0.49
1:D:96:GLN:O	1:D:100:VAL:HG22	2.13	0.49
1:F:87:TYR:HD1	1:F:88:ASP:HB2	1.78	0.49
1:L:297:ASN:HB3	1:L:321:LYS:HE2	1.95	0.49
1:P:14:PRO:HD2	1:P:180:GLU:O	2.13	0.49
1:P:372:MET:HA	1:P:381:GLU:O	2.13	0.49
1:F:252:SER:O	1:F:253:LYS:HB2	2.13	0.48
1:H:258:ARG:NH1	1:N:100:VAL:HG21	2.28	0.48

Continued on next page...

Continued from previous page...

Atom-1	Atom-2	Interatomic distance (Å)	Clash overlap (Å)
1:H:315:GLU:OE2	1:H:329:ARG:NH1	2.38	0.48
1:F:302:ILE:HB	1:F:371:LEU:HA	1.95	0.48
1:L:96:GLN:O	1:L:100:VAL:HG22	2.13	0.48
1:D:297:ASN:HB3	1:D:321:LYS:HE2	1.96	0.48
1:F:18:ALA:HB2	1:F:180:GLU:HG3	1.95	0.48
1:F:163:ILE:HB	1:F:164:GLY:HA2	1.96	0.48
1:B:22:ALA:HA	1:B:117:GLU:OE2	2.13	0.48
1:H:14:PRO:HD2	1:H:180:GLU:O	2.13	0.48
1:H:130:PHE:CE2	1:H:141:VAL:HG23	2.49	0.48
1:H:268:VAL:HG13	1:H:272:VAL:HG21	1.95	0.48
1:P:302:ILE:HB	1:P:371:LEU:HA	1.95	0.48
1:B:245:GLN:NE2	1:B:381:GLU:OE1	2.46	0.48
1:J:107:ALA:HB1	1:J:190:VAL:HG11	1.94	0.48
1:D:130:PHE:CE2	1:D:141:VAL:HG23	2.49	0.48
1:F:51:THR:OG1	1:N:253:LYS:HG3	2.14	0.48
1:F:120:GLN:HB3	1:F:121:PRO:HD2	1.96	0.48
1:H:303:PRO:HD2	1:H:328:THR:OG1	2.14	0.48
1:P:120:GLN:NE2	1:P:233:ILE:HD12	2.29	0.48
1:B:189:VAL:O	1:B:222:ALA:HA	2.14	0.47
1:B:107:ALA:HB1	1:B:190:VAL:HG11	1.95	0.47
1:J:56:LYS:HA	1:J:59:ARG:HD2	1.97	0.47
1:N:99:GLU:OE2	1:N:196:VAL:HB	2.14	0.47
1:N:343:VAL:HA	1:N:346:ILE:HD12	1.97	0.47
1:B:318:LEU:O	1:B:319:GLU:HB2	2.14	0.47
1:H:189:VAL:HG21	1:H:225:ILE:HD12	1.95	0.47
1:N:230:ASP:OD1	1:N:232:SER:HB3	2.14	0.47
1:H:133:THR:HA	1:H:162:THR:HA	1.96	0.47
1:B:49:HIS:CD2	1:N:65:THR:HA	2.50	0.47
1:D:87:TYR:CD2	1:D:88:ASP:HB2	2.46	0.47
1:F:258:ARG:NH1	1:P:100:VAL:HG21	2.29	0.47
1:D:70:TYR:O	1:D:218:ASP:HB2	2.15	0.47
1:L:211:ILE:O	1:L:215:ILE:HG12	2.15	0.47
1:N:195:THR:HG23	1:N:218:ASP:OD1	2.15	0.47
1:F:43:ARG:HG2	1:F:48:GLU:OE2	2.15	0.47
1:F:377:GLY:N	1:F:378:VAL:HA	2.29	0.47
1:L:31:CYS:SG	1:L:68:LYS:HD2	2.55	0.47
1:H:163:ILE:HB	1:H:164:GLY:HA2	1.97	0.46
1:P:73:LEU:HG	1:P:196:VAL:HG22	1.96	0.46
1:J:239:GLU:HB2	1:J:386:ARG:HB3	1.98	0.46
1:P:182:ASN:HB2	1:P:185:SER:HB3	1.96	0.46
1:F:68:LYS:HE2	1:F:70:TYR:OH	2.16	0.46

Continued on next page...

Continued from previous page...

Atom-1	Atom-2	Interatomic distance (Å)	Clash overlap (Å)
1:H:306:GLY:HA3	1:H:310:ILE:HD12	1.96	0.46
1:L:139:PRO:HB2	1:L:143:CYS:SG	2.54	0.46
1:N:109:ARG:HH11	1:N:113:ARG:HH21	1.63	0.46
1:F:347:LEU:HD21	1:F:385:LEU:HD11	1.97	0.46
1:D:266:PHE:CZ	1:D:268:VAL:HG23	2.51	0.46
1:H:66:VAL:HA	1:H:333:SER:HA	1.97	0.46
1:B:113:ARG:HH12	1:D:62:GLU:CG	2.29	0.46
1:D:163:ILE:HB	1:D:164:GLY:HA2	1.98	0.46
1:L:301:TRP:O	1:L:302:ILE:HD13	2.15	0.46
1:F:32:PHE:CE1	1:F:71:LEU:HB2	2.51	0.46
1:L:120:GLN:HB3	1:L:121:PRO:HD2	1.97	0.46
1:N:142:ASP:OD2	1:N:157:ARG:HD2	2.16	0.46
1:N:348:ASP:O	1:N:351:ARG:HG2	2.15	0.46
1:B:58:LYS:HE2	1:B:62:GLU:OE1	2.16	0.46
1:B:230:ASP:OD1	1:B:232:SER:HB3	2.16	0.46
1:H:156:ASN:HB3	1:N:173:ARG:NH1	2.31	0.46
1:N:249:PRO:O	1:N:251:THR:HG23	2.15	0.46
1:D:206:ASP:OD2	1:D:209:ASN:ND2	2.47	0.46
1:H:129:ILE:HD12	1:H:189:VAL:HG22	1.97	0.46
1:J:211:ILE:O	1:J:215:ILE:HG12	2.15	0.46
1:L:248:VAL:HG22	1:L:279:ASN:ND2	2.14	0.45
1:J:95:ARG:NH1	1:J:196:VAL:O	2.46	0.45
1:J:306:GLY:O	2:J:401:COA:H61	2.15	0.45
1:D:238:PHE:CE2	1:D:347:LEU:HD22	2.50	0.45
1:F:268:VAL:HG13	1:F:272:VAL:HG21	1.99	0.45
1:D:104:PRO:HG3	1:D:141:VAL:HB	1.98	0.45
1:H:306:GLY:HA2	1:H:337:ASN:ND2	2.32	0.45
1:J:99:GLU:OE2	1:J:197:MET:N	2.49	0.45
1:F:136:ILE:HA	1:F:161:TYR:CE1	2.52	0.45
1:L:298:SER:O	1:L:366:LEU:HD13	2.16	0.45
1:H:269:ASP:OD2	1:H:271:MET:HB2	2.17	0.45
1:N:53:LEU:HD13	1:N:204:GLU:HG2	1.99	0.45
1:N:68:LYS:HB2	1:N:68:LYS:HE3	1.76	0.45
1:B:377:GLY:N	1:B:378:VAL:HA	2.32	0.45
1:D:275:LEU:HD23	1:D:275:LEU:HA	1.78	0.45
1:F:19:SER:OG	1:F:239:GLU:HG2	2.17	0.45
1:F:136:ILE:HA	1:F:161:TYR:CZ	2.52	0.45
1:J:68:LYS:HE2	1:J:70:TYR:OH	2.17	0.45
1:J:255:ILE:HB	1:J:376:PRO:HA	1.99	0.45
1:L:268:VAL:HG11	2:L:401:COA:H71	1.99	0.45
1:B:81:TYR:CD1	1:B:94:ALA:HB1	2.52	0.45

Continued on next page...

Continued from previous page...

Atom-1	Atom-2	Interatomic distance (Å)	Clash overlap (Å)
1:J:163:ILE:HB	1:J:164:GLY:HA2	1.98	0.45
1:D:31:CYS:SG	1:D:68:LYS:HD2	2.57	0.44
1:L:189:VAL:O	1:L:222:ALA:HA	2.16	0.44
1:N:256:ARG:HB2	1:N:267:TYR:HB3	1.99	0.44
1:P:103:VAL:HB	1:P:104:PRO:HD3	1.99	0.44
1:H:230:ASP:OD1	1:H:232:SER:HB3	2.17	0.44
1:N:130:PHE:CE2	1:N:141:VAL:HG23	2.51	0.44
1:H:189:VAL:O	1:H:222:ALA:HA	2.16	0.44
1:L:23:ILE:HG21	1:L:348:ASP:HB2	1.98	0.44
1:L:330:HIS:CE1	1:L:334:GLU:HG3	2.52	0.44
1:P:25:THR:HB	1:P:345:PHE:CZ	2.52	0.44
1:H:95:ARG:NH1	1:H:196:VAL:O	2.49	0.44
1:L:77:LEU:HD23	1:L:77:LEU:HA	1.79	0.44
1:L:211:ILE:HD11	2:L:401:COA:C6A	2.47	0.44
1:D:53:LEU:HD13	1:D:204:GLU:HG3	1.99	0.44
1:B:223:LEU:CD1	1:B:225:ILE:HD11	2.48	0.44
1:D:223:LEU:CD1	1:D:225:ILE:HD11	2.48	0.44
1:F:199:PHE:CD1	1:F:199:PHE:C	2.91	0.44
1:J:255:ILE:HD12	1:J:378:VAL:HG22	1.98	0.44
1:P:68:LYS:NZ	1:P:334:GLU:OE1	2.50	0.44
1:H:108:ALA:O	1:H:112:SER:OG	2.25	0.44
1:P:38:PRO:HG2	1:P:58:LYS:HG3	2.00	0.44
1:J:248:VAL:CG2	1:J:279:ASN:HD22	2.27	0.44
1:N:241:PHE:CE1	1:N:291:LEU:HD21	2.53	0.44
1:J:347:LEU:HA	1:J:347:LEU:HD23	1.79	0.43
1:B:376:PRO:HG2	1:J:138:LYS:HD2	2.00	0.43
1:B:127:HIS:CD2	1:B:156:ASN:HB2	2.54	0.43
1:F:197:MET:HG2	1:F:264:LEU:HB2	2.01	0.43
1:L:372:MET:HA	1:L:381:GLU:O	2.18	0.43
1:D:269:ASP:OD2	1:D:271:MET:HB2	2.18	0.43
1:J:101:ALA:O	1:J:104:PRO:HD2	2.19	0.43
1:J:189:VAL:O	1:J:222:ALA:HA	2.18	0.43
1:B:170:THR:HG23	1:B:173:ARG:NH2	2.33	0.43
1:J:73:LEU:HG	1:J:196:VAL:HG22	2.01	0.43
1:D:361:THR:HB	1:D:387:ALA:HB1	2.00	0.43
1:F:207:LEU:O	1:F:211:ILE:HG12	2.19	0.43
1:L:42:PHE:HB2	1:L:54:LYS:HE3	2.00	0.43
1:L:70:TYR:O	1:L:218:ASP:HB2	2.18	0.43
1:L:149:LEU:HD13	1:L:151:LEU:HD21	2.00	0.43
1:H:41:SER:O	1:H:45:THR:HG23	2.18	0.43
1:J:120:GLN:NE2	1:J:233:ILE:HD12	2.33	0.43

Continued on next page...

Continued from previous page...

Atom-1	Atom-2	Interatomic distance (Å)	Clash overlap (Å)
1:L:17:LEU:HD13	1:L:241:PHE:HA	2.00	0.43
1:P:153:LEU:HA	1:P:153:LEU:HD23	1.81	0.43
1:P:367:GLU:OE2	1:P:386:ARG:NH2	2.52	0.43
1:B:64:SER:HB2	1:B:215:ILE:HD13	2.01	0.43
1:B:301:TRP:HB3	1:B:303:PRO:HD3	2.01	0.43
1:L:149:LEU:HD12	1:L:151:LEU:HD11	2.01	0.43
1:P:268:VAL:HG13	1:P:272:VAL:HG21	2.01	0.43
1:B:31:CYS:HB2	1:B:70:TYR:CE1	2.54	0.43
1:D:252:SER:O	1:D:253:LYS:HB2	2.19	0.43
1:B:153:LEU:HD22	1:J:247:LEU:HB2	2.00	0.42
1:N:99:GLU:CD	1:N:134:SER:HB3	2.39	0.42
1:N:103:VAL:HG23	1:N:194:LEU:HD12	2.01	0.42
1:F:53:LEU:HD22	1:F:204:GLU:HG3	2.01	0.42
1:J:59:ARG:HG2	1:J:59:ARG:HH11	1.83	0.42
1:N:107:ALA:HB1	1:N:190:VAL:HG11	2.01	0.42
1:P:64:SER:HB2	1:P:215:ILE:CD1	2.48	0.42
1:D:306:GLY:HA2	1:D:337:ASN:ND2	2.34	0.42
1:J:17:LEU:HD13	1:J:241:PHE:HA	2.01	0.42
1:P:163:ILE:HB	1:P:164:GLY:HA2	2.00	0.42
1:P:211:ILE:O	1:P:215:ILE:HG12	2.19	0.42
1:B:260:LYS:HD3	1:B:265:THR:HG21	2.02	0.42
1:J:59:ARG:HG2	1:J:59:ARG:NH1	2.35	0.42
1:J:81:TYR:OH	1:J:97:GLU:OE2	2.28	0.42
1:N:120:GLN:OE1	1:N:233:ILE:HD12	2.18	0.42
1:D:57:PHE:CD1	1:D:210:LEU:HD22	2.54	0.42
1:N:101:ALA:O	1:N:104:PRO:HD2	2.19	0.42
1:P:253:LYS:CD	1:P:256:ARG:HD3	2.49	0.42
1:B:239:GLU:OE1	1:B:386:ARG:HD3	2.20	0.42
1:B:241:PHE:CE2	1:B:291:LEU:HD21	2.54	0.42
1:F:43:ARG:HA	1:F:48:GLU:OE2	2.20	0.42
1:J:268:VAL:O	2:J:401:COA:N6A	2.51	0.42
1:H:194:LEU:HD23	1:H:218:ASP:HB3	2.01	0.42
1:P:92:LEU:HA	1:P:95:ARG:HD2	2.02	0.42
1:P:372:MET:HE3	1:P:382:THR:HG23	2.02	0.42
1:D:210:LEU:HA	1:D:210:LEU:HD23	1.55	0.42
1:H:99:GLU:CD	1:H:134:SER:HB3	2.39	0.42
1:J:210:LEU:HA	1:J:210:LEU:HD23	1.79	0.42
1:D:325:LEU:HA	1:D:325:LEU:HD23	1.74	0.41
1:L:223:LEU:HD21	1:L:344:LEU:HD22	2.02	0.41
1:P:66:VAL:HA	1:P:333:SER:HA	2.02	0.41
1:F:280:ILE:HG13	1:F:372:MET:SD	2.60	0.41

Continued on next page...

Continued from previous page...

Atom-1	Atom-2	Interatomic distance (Å)	Clash overlap (Å)
1:F:300:PHE:CD1	1:F:369:GLY:HA3	2.55	0.41
1:N:53:LEU:HD22	1:N:204:GLU:HG3	2.02	0.41
1:B:64:SER:HB2	1:B:215:ILE:CD1	2.50	0.41
1:J:372:MET:HA	1:J:381:GLU:O	2.20	0.41
1:N:318:LEU:HD23	1:N:318:LEU:HA	1.77	0.41
1:P:57:PHE:CE1	1:P:213:MET:HG3	2.56	0.41
1:P:313:GLU:OE1	1:P:313:GLU:HA	2.21	0.41
1:D:377:GLY:N	1:D:378:VAL:HA	2.35	0.41
1:J:371:LEU:HD22	1:J:383:ILE:HD12	2.01	0.41
1:L:14:PRO:HD2	1:L:180:GLU:O	2.20	0.41
1:L:239:GLU:HG3	1:L:388:ILE:HD11	2.01	0.41
1:P:127:HIS:CD2	1:P:156:ASN:HB2	2.55	0.41
1:P:245:GLN:HE21	1:P:379:THR:HG21	1.86	0.41
1:P:253:LYS:HD3	1:P:253:LYS:HA	1.73	0.41
1:F:205:THR:HB	1:H:80:GLU:OE2	2.20	0.41
1:F:205:THR:O	1:H:80:GLU:OE2	2.38	0.41
1:L:132:SER:O	1:L:161:TYR:HA	2.20	0.41
1:N:328:THR:HG23	1:N:346:ILE:HD13	2.01	0.41
1:B:68:LYS:HE2	1:B:334:GLU:OE1	2.21	0.41
1:D:66:VAL:HA	1:D:333:SER:HA	2.03	0.41
1:F:300:PHE:CZ	1:F:369:GLY:HA3	2.55	0.41
1:J:252:SER:O	1:J:253:LYS:HB2	2.20	0.41
1:B:372:MET:HA	1:B:381:GLU:O	2.20	0.41
1:D:103:VAL:HB	1:D:104:PRO:HD3	2.02	0.41
1:D:189:VAL:O	1:D:222:ALA:HA	2.21	0.41
1:F:189:VAL:O	1:F:222:ALA:HA	2.20	0.41
1:J:241:PHE:HE2	1:J:291:LEU:HD21	1.79	0.41
1:P:101:ALA:O	1:P:104:PRO:HD2	2.20	0.41
1:B:64:SER:O	1:B:65:THR:OG1	2.23	0.41
1:D:99:GLU:OE2	1:D:197:MET:HB2	2.20	0.41
1:L:142:ASP:OD2	1:L:159:MET:HB2	2.21	0.41
1:L:246:THR:HG21	1:L:283:CYS:SG	2.60	0.41
1:P:163:ILE:HB	1:P:167:ALA:HB2	2.02	0.41
1:D:132:SER:O	1:D:161:TYR:HA	2.21	0.41
1:J:194:LEU:HD23	1:J:218:ASP:HB3	2.03	0.41
1:P:129:ILE:HD12	1:P:175:ALA:HB2	2.02	0.41
1:P:300:PHE:CE2	1:P:369:GLY:HA3	2.56	0.41
1:D:22:ALA:O	1:D:223:LEU:HA	2.21	0.40
1:H:103:VAL:HB	1:H:104:PRO:HD3	2.04	0.40
1:H:107:ALA:HB1	1:H:190:VAL:HG11	2.02	0.40
1:H:197:MET:HG2	1:H:264:LEU:CB	2.51	0.40

Continued on next page...

Continued from previous page...

Atom-1	Atom-2	Interatomic distance (Å)	Clash overlap (Å)
1:L:53:LEU:HD11	1:L:210:LEU:HD11	2.02	0.40
1:L:130:PHE:CE2	1:L:141:VAL:HG23	2.56	0.40
1:L:216:PHE:HZ	2:L:401:COA:HN4	1.68	0.40
1:L:252:SER:O	1:L:253:LYS:HB2	2.20	0.40
1:P:53:LEU:HD11	1:P:210:LEU:HD11	2.02	0.40
1:H:149:LEU:HD23	1:H:149:LEU:HA	1.88	0.40
1:N:377:GLY:N	1:N:378:VAL:HA	2.37	0.40
1:B:204:GLU:HB2	1:N:58:LYS:HE2	2.03	0.40
1:B:351:ARG:HH21	1:B:352:ARG:NH2	2.19	0.40
1:H:111:ALA:HA	1:H:222:ALA:HB3	2.04	0.40
1:N:258:ARG:O	1:N:264:LEU:HD12	2.20	0.40
1:D:273:PRO:HA	1:D:310:ILE:HG12	2.03	0.40
1:L:368:TRP:CZ3	1:L:386:ARG:HB2	2.57	0.40
1:N:86:THR:OG1	1:N:89:ALA:HB3	2.21	0.40
1:P:23:ILE:HG12	1:P:223:LEU:HD22	2.02	0.40
1:P:120:GLN:HB3	1:P:121:PRO:HD2	2.03	0.40
1:B:42:PHE:HE1	1:B:57:PHE:CD2	2.39	0.40
1:J:211:ILE:HD11	2:J:401:COA:C8A	2.52	0.40

All (1) symmetry-related close contacts are listed below. The label for Atom-2 includes the symmetry operator and encoded unit-cell translations to be applied.

Atom-1	Atom-2	Interatomic distance (Å)	Clash overlap (Å)
1:H:232:SER:O	1:H:250:ASN:ND2[1_655]	2.14	0.06

5.3 Torsion angles [i](#)

5.3.1 Protein backbone [i](#)

In the following table, the Percentiles column shows the percent Ramachandran outliers of the chain as a percentile score with respect to all X-ray entries followed by that with respect to entries of similar resolution.

The Analysed column shows the number of residues for which the backbone conformation was analysed, and the total number of residues.

Mol	Chain	Analysed	Favoured	Allowed	Outliers	Percentiles
1	B	375/393 (95%)	361 (96%)	13 (4%)	1 (0%)	41 73
1	D	375/393 (95%)	359 (96%)	15 (4%)	1 (0%)	41 73

Continued on next page...

Continued from previous page...

Mol	Chain	Analysed	Favoured	Allowed	Outliers	Percentiles	
1	F	375/393 (95%)	362 (96%)	13 (4%)	0	100	100
1	H	377/393 (96%)	361 (96%)	15 (4%)	1 (0%)	41	73
1	J	377/393 (96%)	363 (96%)	14 (4%)	0	100	100
1	L	375/393 (95%)	361 (96%)	14 (4%)	0	100	100
1	N	378/393 (96%)	360 (95%)	17 (4%)	1 (0%)	41	73
1	P	376/393 (96%)	364 (97%)	11 (3%)	1 (0%)	41	73
All	All	3008/3144 (96%)	2891 (96%)	112 (4%)	5 (0%)	47	78

All (5) Ramachandran outliers are listed below:

Mol	Chain	Res	Type
1	N	13	ARG
1	H	13	ARG
1	P	164	GLY
1	B	164	GLY
1	D	164	GLY

5.3.2 Protein sidechains [i](#)

In the following table, the Percentiles column shows the percent sidechain outliers of the chain as a percentile score with respect to all X-ray entries followed by that with respect to entries of similar resolution.

The Analysed column shows the number of residues for which the sidechain conformation was analysed, and the total number of residues.

Mol	Chain	Analysed	Rotameric	Outliers	Percentiles	
1	B	316/329 (96%)	316 (100%)	0	100	100
1	D	316/329 (96%)	316 (100%)	0	100	100
1	F	316/329 (96%)	316 (100%)	0	100	100
1	H	318/329 (97%)	318 (100%)	0	100	100
1	J	318/329 (97%)	318 (100%)	0	100	100
1	L	316/329 (96%)	316 (100%)	0	100	100
1	N	319/329 (97%)	319 (100%)	0	100	100
1	P	317/329 (96%)	317 (100%)	0	100	100
All	All	2536/2632 (96%)	2536 (100%)	0	100	100

There are no protein residues with a non-rotameric sidechain to report.

Sometimes sidechains can be flipped to improve hydrogen bonding and reduce clashes. All (12) such sidechains are listed below:

Mol	Chain	Res	Type
1	B	279	ASN
1	D	144	HIS
1	D	279	ASN
1	F	279	ASN
1	H	279	ASN
1	J	27	ASN
1	J	72	HIS
1	J	279	ASN
1	L	279	ASN
1	N	27	ASN
1	P	120	GLN
1	P	304	HIS

5.3.3 RNA [i](#)

There are no RNA molecules in this entry.

5.4 Non-standard residues in protein, DNA, RNA chains [i](#)

There are no non-standard protein/DNA/RNA residues in this entry.

5.5 Carbohydrates [i](#)

There are no monosaccharides in this entry.

5.6 Ligand geometry [i](#)

4 ligands are modelled in this entry.

In the following table, the Counts columns list the number of bonds (or angles) for which Mogul statistics could be retrieved, the number of bonds (or angles) that are observed in the model and the number of bonds (or angles) that are defined in the Chemical Component Dictionary. The Link column lists molecule types, if any, to which the group is linked. The Z score for a bond length (or angle) is the number of standard deviations the observed value is removed from the expected value. A bond length (or angle) with $|Z| > 2$ is considered an outlier worth inspection. RMSZ is the root-mean-square of all Z scores of the bond lengths (or angles).

Mol	Type	Chain	Res	Link	Bond lengths			Bond angles		
					Counts	RMSZ	# Z > 2	Counts	RMSZ	# Z > 2
2	COA	L	401	1	41,49,50	0.85	1 (2%)	51,74,75	1.07	5 (9%)
2	COA	J	401	1	41,49,50	0.69	1 (2%)	51,74,75	1.09	3 (5%)
2	COA	B	401	1	41,49,50	0.71	1 (2%)	51,74,75	1.05	5 (9%)
2	COA	D	401	1	41,49,50	0.70	0	51,74,75	1.15	5 (9%)

In the following table, the Chirals column lists the number of chiral outliers, the number of chiral centers analysed, the number of these observed in the model and the number defined in the Chemical Component Dictionary. Similar counts are reported in the Torsion and Rings columns. '-' means no outliers of that kind were identified.

Mol	Type	Chain	Res	Link	Chirals	Torsions	Rings
2	COA	L	401	1	-	20/43/63/64	0/3/3/3
2	COA	J	401	1	-	14/43/63/64	0/3/3/3
2	COA	B	401	1	-	23/43/63/64	0/3/3/3
2	COA	D	401	1	-	19/43/63/64	0/3/3/3

All (3) bond length outliers are listed below:

Mol	Chain	Res	Type	Atoms	Z	Observed(Å)	Ideal(Å)
2	L	401	COA	P3B-O3B	3.68	1.66	1.59
2	B	401	COA	P3B-O3B	2.33	1.63	1.59
2	J	401	COA	P3B-O3B	2.10	1.63	1.59

All (18) bond angle outliers are listed below:

Mol	Chain	Res	Type	Atoms	Z	Observed(°)	Ideal(°)
2	J	401	COA	C7P-C6P-C5P	4.42	119.72	112.36
2	D	401	COA	C7P-C6P-C5P	3.96	118.95	112.36
2	B	401	COA	P2A-O3A-P1A	3.55	144.99	132.83
2	D	401	COA	O4B-C1B-C2B	-3.06	102.45	106.93
2	L	401	COA	P2A-O3A-P1A	2.94	142.93	132.83
2	D	401	COA	OAP-CAP-CBP	-2.87	103.48	110.25
2	B	401	COA	C7P-C6P-C5P	2.63	116.73	112.36
2	B	401	COA	OAP-CAP-CBP	-2.45	104.47	110.25
2	J	401	COA	C5A-C6A-N6A	2.39	123.98	120.35
2	L	401	COA	O2B-C2B-C3B	2.34	117.80	111.17
2	J	401	COA	O2B-C2B-C3B	2.28	117.65	111.17
2	B	401	COA	C5A-C6A-N6A	2.27	123.80	120.35
2	D	401	COA	C5A-C6A-N6A	2.17	123.65	120.35
2	D	401	COA	C7P-N8P-C9P	2.15	126.43	122.59

Continued on next page...

Continued from previous page...

Mol	Chain	Res	Type	Atoms	Z	Observed(°)	Ideal(°)
2	B	401	COA	O4B-C1B-C2B	-2.12	103.82	106.93
2	L	401	COA	C5A-C6A-N6A	2.09	123.53	120.35
2	L	401	COA	O4B-C1B-C2B	-2.08	103.89	106.93
2	L	401	COA	C7P-N8P-C9P	2.07	126.27	122.59

There are no chirality outliers.

All (76) torsion outliers are listed below:

Mol	Chain	Res	Type	Atoms
2	B	401	COA	C5B-O5B-P1A-O1A
2	B	401	COA	C5B-O5B-P1A-O2A
2	B	401	COA	CCP-O6A-P2A-O5A
2	B	401	COA	CAP-CBP-CCP-O6A
2	B	401	COA	OAP-CAP-CBP-CCP
2	B	401	COA	C9P-CAP-CBP-CCP
2	B	401	COA	OAP-CAP-CBP-CDP
2	B	401	COA	C9P-CAP-CBP-CDP
2	B	401	COA	OAP-CAP-CBP-CEP
2	B	401	COA	C9P-CAP-CBP-CEP
2	B	401	COA	CAP-C9P-N8P-C7P
2	D	401	COA	CBP-CCP-O6A-P2A
2	D	401	COA	CAP-CBP-CCP-O6A
2	D	401	COA	OAP-CAP-CBP-CCP
2	D	401	COA	C9P-CAP-CBP-CCP
2	D	401	COA	OAP-CAP-CBP-CDP
2	D	401	COA	C9P-CAP-CBP-CDP
2	D	401	COA	OAP-CAP-CBP-CEP
2	D	401	COA	C9P-CAP-CBP-CEP
2	D	401	COA	CAP-C9P-N8P-C7P
2	D	401	COA	O9P-C9P-N8P-C7P
2	J	401	COA	C5B-O5B-P1A-O3A
2	L	401	COA	C3B-C4B-C5B-O5B
2	L	401	COA	O4B-C4B-C5B-O5B
2	L	401	COA	CCP-O6A-P2A-O4A
2	L	401	COA	CBP-CCP-O6A-P2A
2	L	401	COA	CDP-CBP-CCP-O6A
2	L	401	COA	CEP-CBP-CCP-O6A
2	L	401	COA	CAP-CBP-CCP-O6A
2	L	401	COA	OAP-CAP-CBP-CCP
2	L	401	COA	OAP-CAP-CBP-CEP
2	L	401	COA	O9P-C9P-CAP-OAP
2	B	401	COA	O9P-C9P-N8P-C7P

Continued on next page...

Continued from previous page...

Mol	Chain	Res	Type	Atoms
2	L	401	COA	C2B-C3B-O3B-P3B
2	D	401	COA	C6P-C5P-N4P-C3P
2	D	401	COA	O5P-C5P-N4P-C3P
2	L	401	COA	C4B-C3B-O3B-P3B
2	D	401	COA	CDP-CBP-CCP-O6A
2	D	401	COA	CEP-CBP-CCP-O6A
2	J	401	COA	O9P-C9P-CAP-OAP
2	B	401	COA	CEP-CBP-CCP-O6A
2	L	401	COA	OAP-CAP-CBP-CDP
2	L	401	COA	O9P-C9P-CAP-CBP
2	L	401	COA	C4B-C5B-O5B-P1A
2	D	401	COA	N8P-C9P-CAP-CBP
2	L	401	COA	N8P-C9P-CAP-CBP
2	B	401	COA	P2A-O3A-P1A-O5B
2	L	401	COA	N8P-C9P-CAP-OAP
2	L	401	COA	C5P-C6P-C7P-N8P
2	B	401	COA	CCP-O6A-P2A-O3A
2	D	401	COA	C3B-O3B-P3B-O8A
2	J	401	COA	C3B-O3B-P3B-O8A
2	J	401	COA	C3B-O3B-P3B-O9A
2	L	401	COA	CCP-O6A-P2A-O3A
2	D	401	COA	O4B-C4B-C5B-O5B
2	B	401	COA	CCP-O6A-P2A-O4A
2	J	401	COA	C5B-O5B-P1A-O1A
2	L	401	COA	CCP-O6A-P2A-O5A
2	J	401	COA	O5P-C5P-N4P-C3P
2	J	401	COA	C6P-C5P-N4P-C3P
2	J	401	COA	P2A-O3A-P1A-O2A
2	B	401	COA	O9P-C9P-CAP-CBP
2	D	401	COA	O9P-C9P-CAP-CBP
2	D	401	COA	C3B-C4B-C5B-O5B
2	B	401	COA	CDP-CBP-CCP-O6A
2	J	401	COA	CDP-CBP-CCP-O6A
2	B	401	COA	N8P-C9P-CAP-CBP
2	J	401	COA	N8P-C9P-CAP-CBP
2	J	401	COA	N8P-C9P-CAP-OAP
2	B	401	COA	C5B-O5B-P1A-O3A
2	B	401	COA	CBP-CCP-O6A-P2A
2	B	401	COA	C4B-C3B-O3B-P3B
2	J	401	COA	C5B-O5B-P1A-O2A
2	J	401	COA	CCP-O6A-P2A-O4A
2	B	401	COA	C2B-C3B-O3B-P3B

Continued on next page...

Continued from previous page...

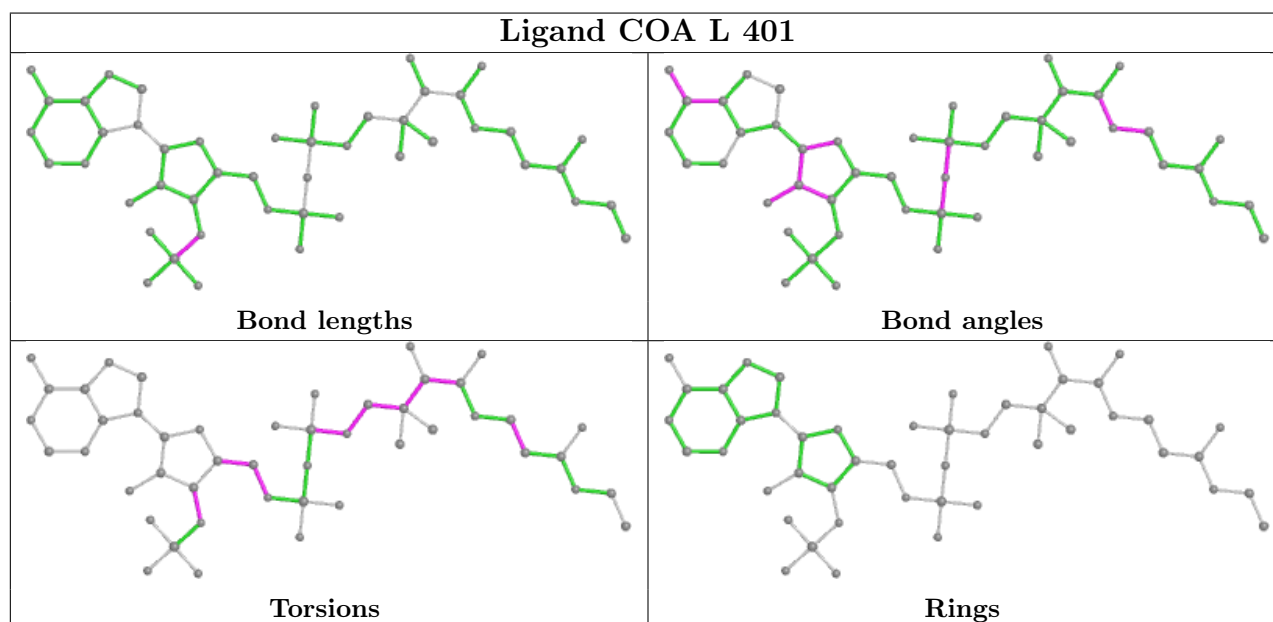
Mol	Chain	Res	Type	Atoms
2	J	401	COA	C4B-C3B-O3B-P3B

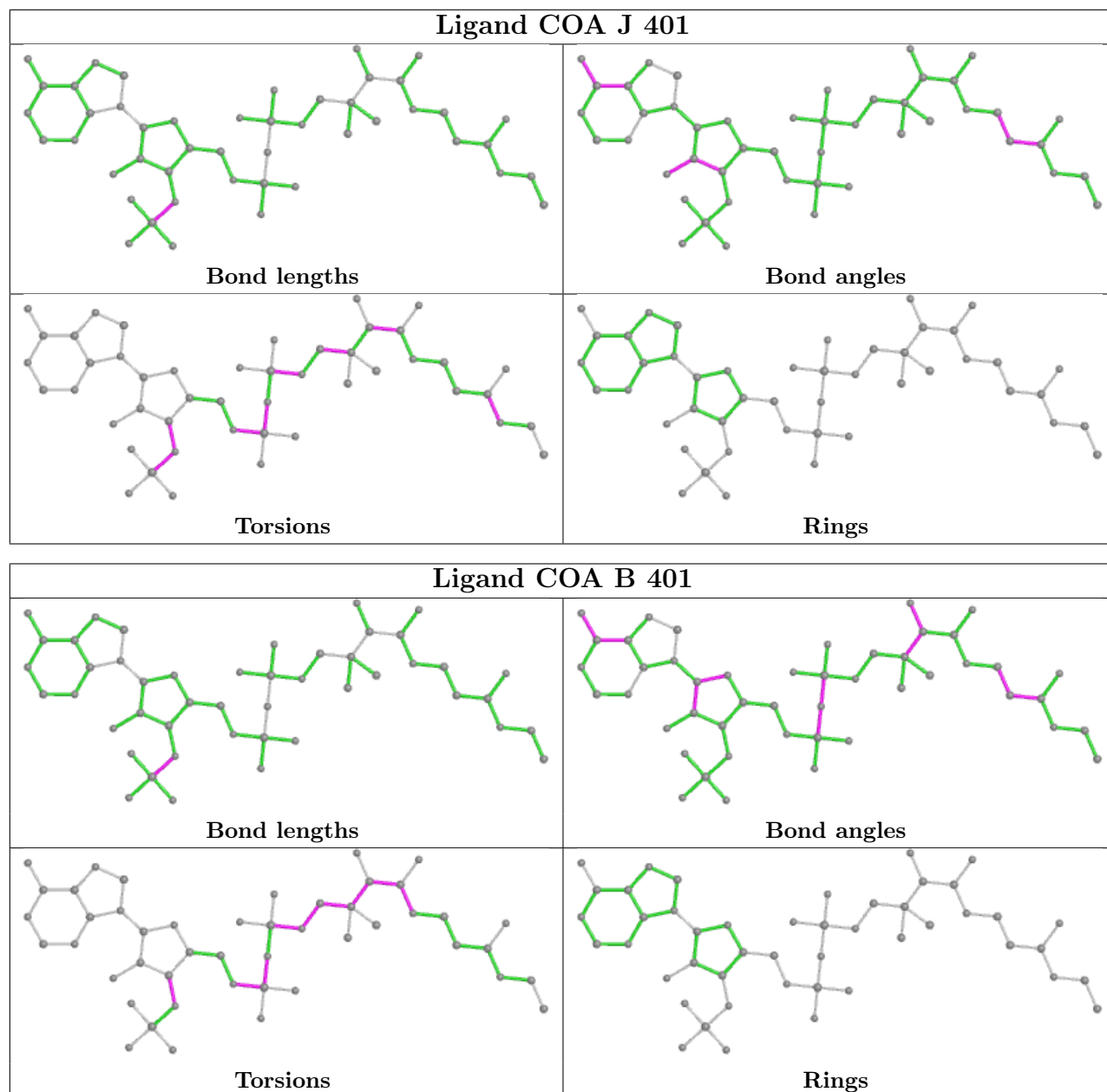
There are no ring outliers.

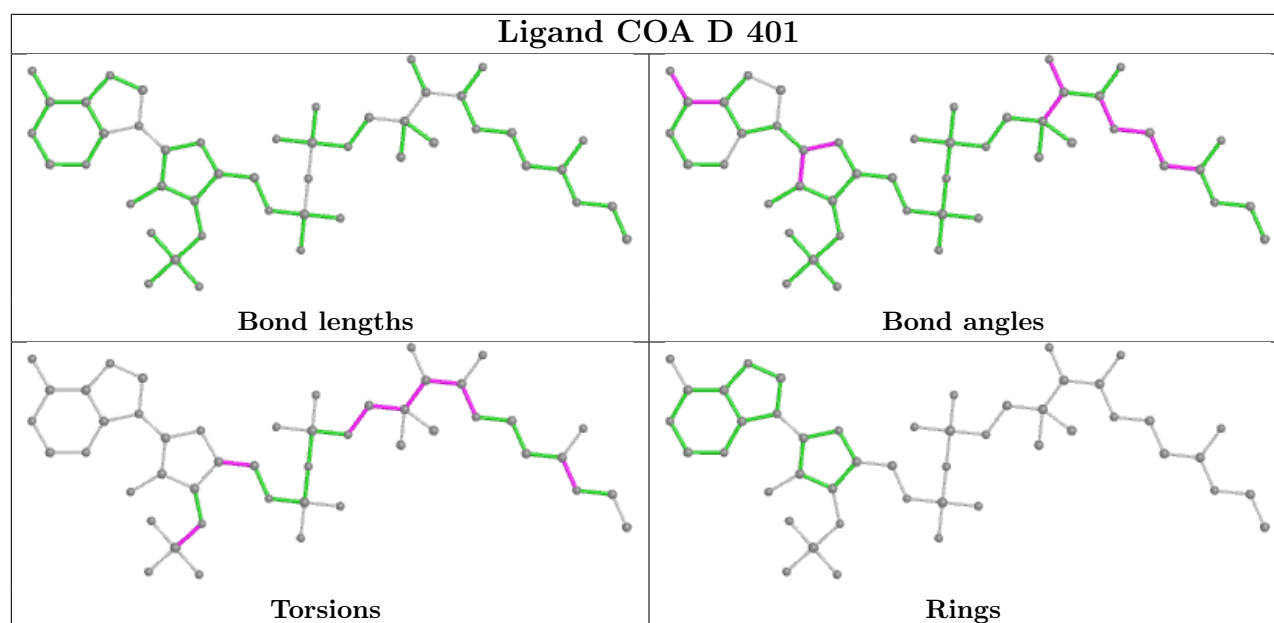
4 monomers are involved in 19 short contacts:

Mol	Chain	Res	Type	Clashes	Symm-Clashes
2	L	401	COA	6	0
2	J	401	COA	4	0
2	B	401	COA	8	0
2	D	401	COA	1	0

The following is a two-dimensional graphical depiction of Mogul quality analysis of bond lengths, bond angles, torsion angles, and ring geometry for all instances of the Ligand of Interest. In addition, ligands with molecular weight > 250 and outliers as shown on the validation Tables will also be included. For torsion angles, if less than 5% of the Mogul distribution of torsion angles is within 10 degrees of the torsion angle in question, then that torsion angle is considered an outlier. Any bond that is central to one or more torsion angles identified as an outlier by Mogul will be highlighted in the graph. For rings, the root-mean-square deviation (RMSD) between the ring in question and similar rings identified by Mogul is calculated over all ring torsion angles. If the average RMSD is greater than 60 degrees and the minimal RMSD between the ring in question and any Mogul-identified rings is also greater than 60 degrees, then that ring is considered an outlier. The outliers are highlighted in purple. The color gray indicates Mogul did not find sufficient equivalents in the CSD to analyse the geometry.







5.7 Other polymers [i](#)

There are no such residues in this entry.

5.8 Polymer linkage issues [i](#)

There are no chain breaks in this entry.

6 Fit of model and data

6.1 Protein, DNA and RNA chains

In the following table, the column labelled ‘#RSRZ > 2’ contains the number (and percentage) of RSRZ outliers, followed by percent RSRZ outliers for the chain as percentile scores relative to all X-ray entries and entries of similar resolution. The OWAB column contains the minimum, median, 95th percentile and maximum values of the occupancy-weighted average B-factor per residue. The column labelled ‘Q < 0.9’ lists the number of (and percentage) of residues with an average occupancy less than 0.9.

Mol	Chain	Analysed	<RSRZ>	#RSRZ>2	OWAB(Å ²)	Q<0.9
1	B	377/393 (95%)	-0.50	3 (0%) 86 78	40, 57, 79, 123	0
1	D	377/393 (95%)	-0.54	0 100 100	38, 57, 73, 100	0
1	F	377/393 (95%)	-0.35	2 (0%) 91 86	43, 56, 78, 117	0
1	H	379/393 (96%)	-0.34	2 (0%) 91 86	45, 59, 82, 125	0
1	J	379/393 (96%)	-0.50	2 (0%) 91 86	42, 60, 77, 109	0
1	L	377/393 (95%)	-0.41	2 (0%) 91 86	42, 62, 86, 100	0
1	N	380/393 (96%)	-0.16	8 (2%) 63 49	42, 60, 78, 115	0
1	P	378/393 (96%)	-0.20	4 (1%) 80 70	44, 60, 80, 120	0
All	All	3024/3144 (96%)	-0.37	23 (0%) 86 78	38, 58, 80, 125	0

All (23) RSRZ outliers are listed below:

Mol	Chain	Res	Type	RSRZ
1	N	391	VAL	3.5
1	N	14	PRO	3.2
1	N	165	CYS	3.2
1	P	15	HIS	3.0
1	N	85	ALA	3.0
1	H	235	LYS	2.9
1	J	290	PRO	2.8
1	B	15	HIS	2.7
1	F	14	PRO	2.6
1	N	42	PHE	2.6
1	B	14	PRO	2.6
1	P	131	SER	2.5
1	P	391	VAL	2.4
1	J	386	ARG	2.2
1	L	294	ASN	2.2
1	H	390	VAL	2.2

Continued on next page...

Continued from previous page...

Mol	Chain	Res	Type	RSRZ
1	F	226	GLY	2.2
1	N	15	HIS	2.1
1	B	291	LEU	2.1
1	N	358	GLY	2.1
1	N	162	THR	2.0
1	L	291	LEU	2.0
1	P	165	CYS	2.0

6.2 Non-standard residues in protein, DNA, RNA chains [i](#)

There are no non-standard protein/DNA/RNA residues in this entry.

6.3 Carbohydrates [i](#)

There are no monosaccharides in this entry.

6.4 Ligands [i](#)

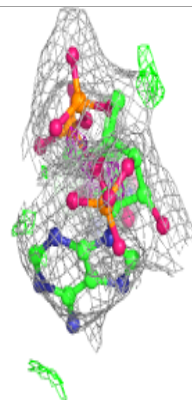
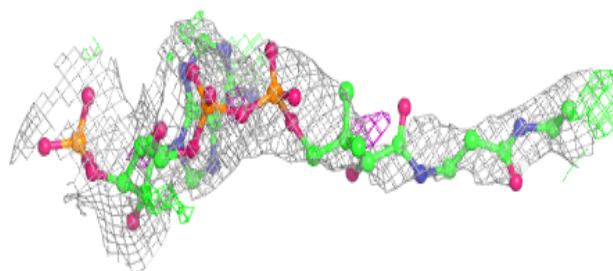
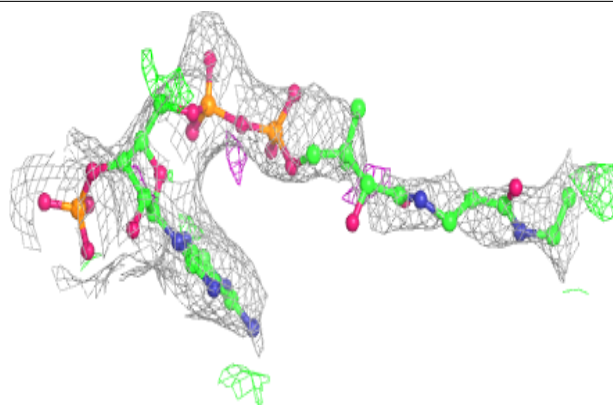
In the following table, the Atoms column lists the number of modelled atoms in the group and the number defined in the chemical component dictionary. The B-factors column lists the minimum, median, 95th percentile and maximum values of B factors of atoms in the group. The column labelled 'Q< 0.9' lists the number of atoms with occupancy less than 0.9.

Mol	Type	Chain	Res	Atoms	RSCC	RSR	B-factors(Å ²)	Q<0.9
2	COA	L	401	47/48	0.79	0.25	78,107,125,128	0
2	COA	B	401	47/48	0.84	0.29	63,90,110,119	0
2	COA	J	401	47/48	0.86	0.22	65,86,106,111	0
2	COA	D	401	47/48	0.89	0.20	58,75,95,109	0

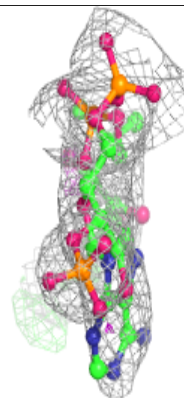
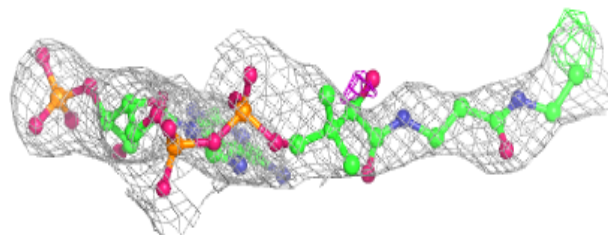
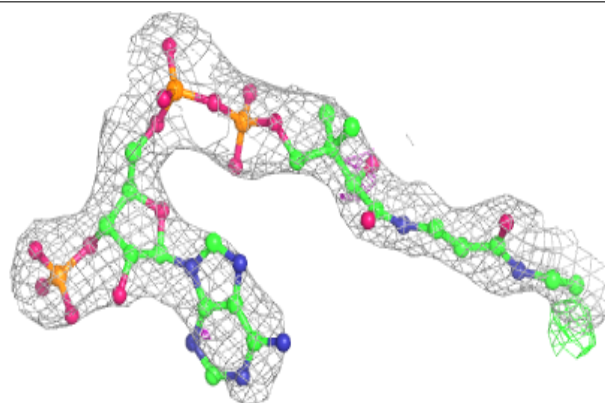
The following is a graphical depiction of the model fit to experimental electron density of all instances of the Ligand of Interest. In addition, ligands with molecular weight > 250 and outliers as shown on the geometry validation Tables will also be included. Each fit is shown from different orientation to approximate a three-dimensional view.

Electron density around COA L 401:

$2mF_o-DF_c$ (at 0.7 rmsd) in gray
 mF_o-DF_c (at 3 rmsd) in purple (negative)
and green (positive)

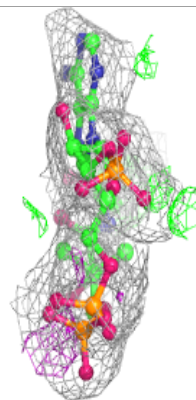
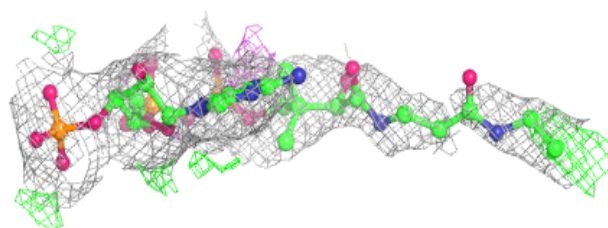
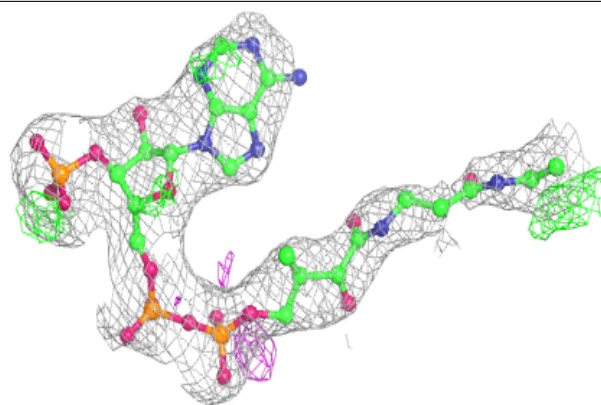
**Electron density around COA B 401:**

$2mF_o-DF_c$ (at 0.7 rmsd) in gray
 mF_o-DF_c (at 3 rmsd) in purple (negative)
and green (positive)

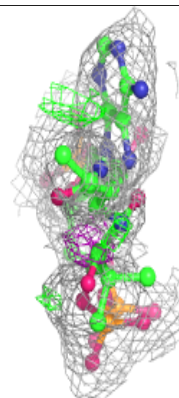
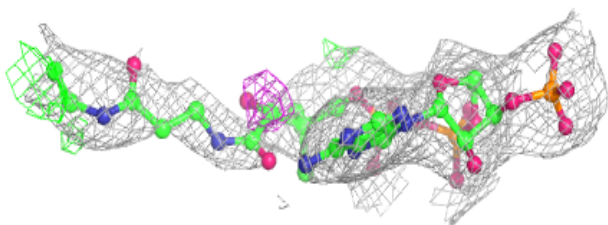
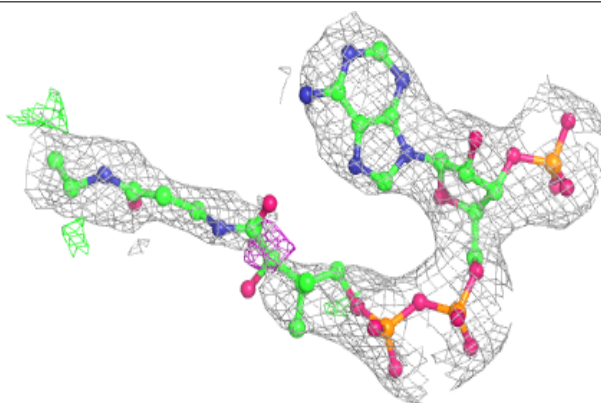


Electron density around COA J 401:

$2mF_o-DF_c$ (at 0.7 rmsd) in gray
 mF_o-DF_c (at 3 rmsd) in purple (negative)
and green (positive)

**Electron density around COA D 401:**

$2mF_o-DF_c$ (at 0.7 rmsd) in gray
 mF_o-DF_c (at 3 rmsd) in purple (negative)
and green (positive)



6.5 Other polymers [i](#)

There are no such residues in this entry.