



Full wwPDB X-ray Structure Validation Report ⓘ

Nov 3, 2024 – 01:19 PM EST

PDB ID : 1F34
Title : CRYSTAL STRUCTURE OF ASCARIS PEPSIN INHIBITOR-3 BOUND TO PORCINE PEPSIN
Authors : Ng, K.K.; Petersen, J.F.; Cherney, M.M.; Garen, C.; James, M.N.
Deposited on : 2000-05-31
Resolution : 2.45 Å(reported)

This is a Full wwPDB X-ray Structure Validation Report for a publicly released PDB entry.

We welcome your comments at validation@mail.wwpdb.org

A user guide is available at

<https://www.wwpdb.org/validation/2017/XrayValidationReportHelp>

with specific help available everywhere you see the ⓘ symbol.

The types of validation reports are described at

<http://www.wwpdb.org/validation/2017/FAQs#types>.

The following versions of software and data (see [references ⓘ](#)) were used in the production of this report:

MolProbity : 4.02b-467
Mogul : 2022.3.0, CSD as543be (2022)
Xtriage (Phenix) : 1.20.1
EDS : 3.0
Percentile statistics : 20231227.v01 (using entries in the PDB archive December 27th 2023)
CCP4 : 9.0.003 (Gargrove)
Density-Fitness : 1.0.11
Ideal geometry (proteins) : Engh & Huber (2001)
Ideal geometry (DNA, RNA) : Parkinson et al. (1996)
Validation Pipeline (wwPDB-VP) : 2.39

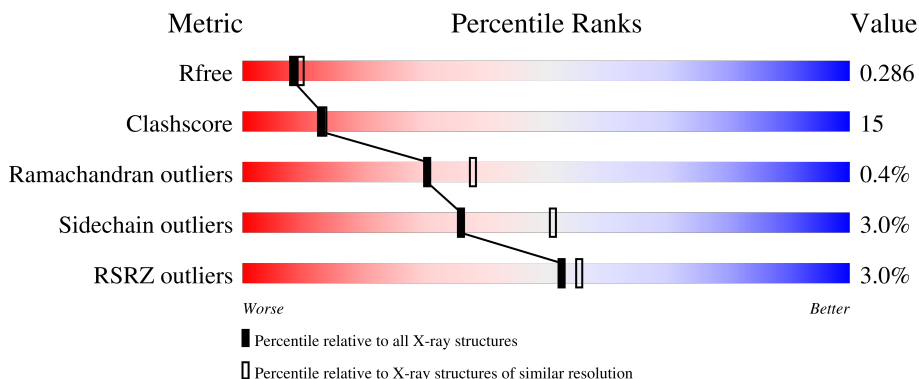
1 Overall quality at a glance

The following experimental techniques were used to determine the structure:

X-RAY DIFFRACTION

The reported resolution of this entry is 2.45 Å.

Percentile scores (ranging between 0-100) for global validation metrics of the entry are shown in the following graphic. The table shows the number of entries on which the scores are based.



Metric	Whole archive (#Entries)	Similar resolution (#Entries, resolution range(Å))
R_{free}	164625	1096 (2.46-2.46)
Clashscore	180529	1178 (2.46-2.46)
Ramachandran outliers	177936	1170 (2.46-2.46)
Sidechain outliers	177891	1170 (2.46-2.46)
RSRZ outliers	164620	1096 (2.46-2.46)

The table below summarises the geometric issues observed across the polymeric chains and their fit to the electron density. The red, orange, yellow and green segments of the lower bar indicate the fraction of residues that contain outliers for ≥ 3 , 2, 1 and 0 types of geometric quality criteria respectively. A grey segment represents the fraction of residues that are not modelled. The numeric value for each fraction is indicated below the corresponding segment, with a dot representing fractions $\leq 5\%$. The upper red bar (where present) indicates the fraction of residues that have poor fit to the electron density. The numeric value is given above the bar.

Mol	Chain	Length	Quality of chain
1	A	326	 4% 72% 26%
2	B	149	 % 63% 29% 7%

2 Entry composition [i](#)

There are 4 unique types of molecules in this entry. The entry contains 3617 atoms, of which 0 are hydrogens and 0 are deuteriums.

In the tables below, the ZeroOcc column contains the number of atoms modelled with zero occupancy, the AltConf column contains the number of residues with at least one atom in alternate conformation and the Trace column contains the number of residues modelled with at most 2 atoms.

- Molecule 1 is a protein called PEPSIN A.

Mol	Chain	Residues	Atoms						ZeroOcc	AltConf	Trace
			Total	C	N	O	P	S			
1	A	326	2433	1530	366	526	1	10	0	0	0

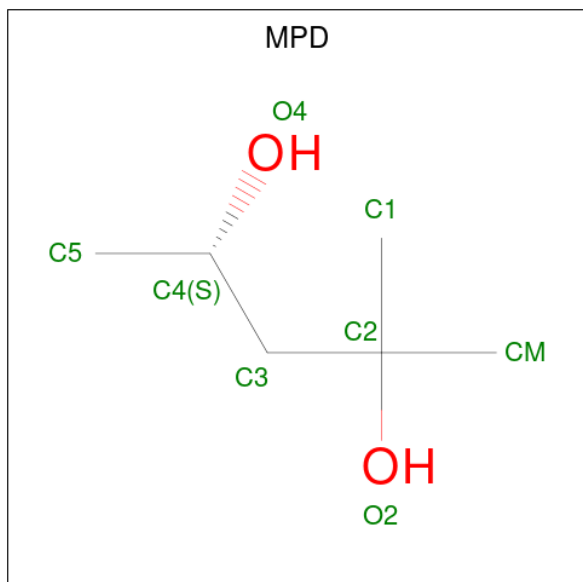
There are 2 discrepancies between the modelled and reference sequences:

Chain	Residue	Modelled	Actual	Comment	Reference
A	68	SEP	SER	modified residue	UNP P00791
A	?	-	ILE	SEE REMARK 999	UNP P00791

- Molecule 2 is a protein called MAJOR PEPSIN INHIBITOR PI-3.

Mol	Chain	Residues	Atoms					ZeroOcc	AltConf	Trace
			Total	C	N	O	S			
2	B	138	1074	685	176	202	11	0	0	0

- Molecule 3 is (4S)-2-METHYL-2,4-PENTANEDIOL (three-letter code: MPD) (formula: $C_6H_{14}O_2$).



Mol	Chain	Residues	Atoms			ZeroOcc	AltConf
3	A	1	Total	C	O	0	0
			8	6	2		

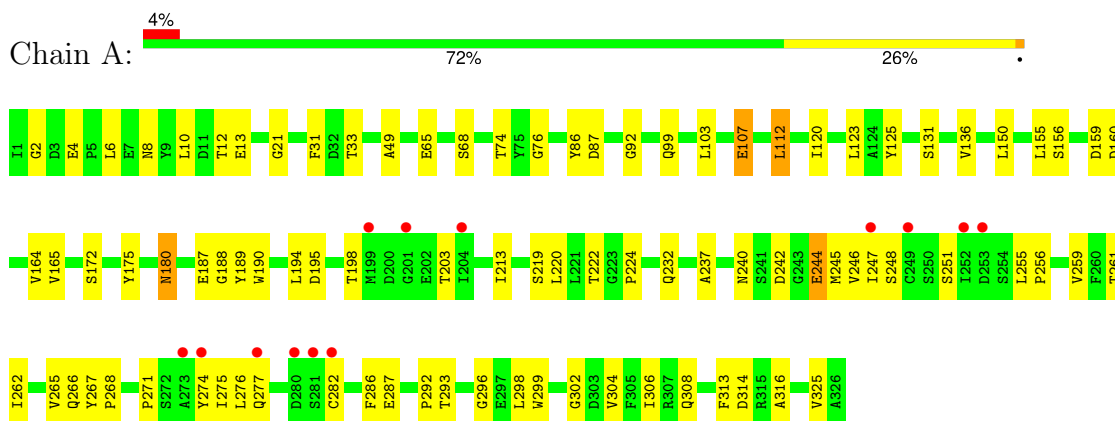
- Molecule 4 is water.

Mol	Chain	Residues	Atoms		ZeroOcc	AltConf
4	A	73	Total	O	0	0
			73	73		
4	B	29	Total	O	0	0
			29	29		

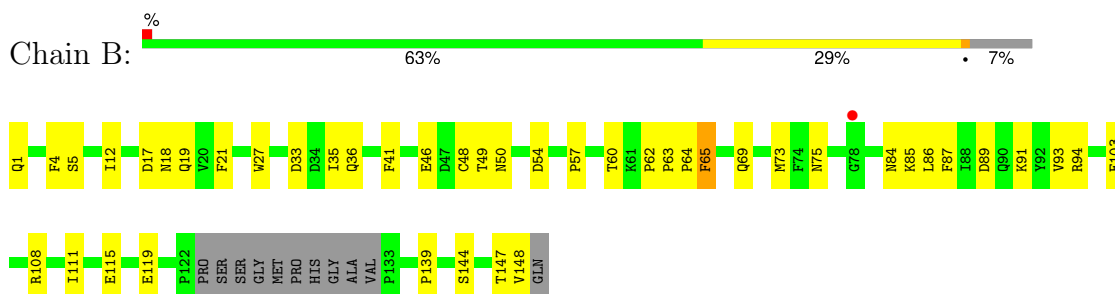
3 Residue-property plots [i](#)

These plots are drawn for all protein, RNA, DNA and oligosaccharide chains in the entry. The first graphic for a chain summarises the proportions of the various outlier classes displayed in the second graphic. The second graphic shows the sequence view annotated by issues in geometry and electron density. Residues are color-coded according to the number of geometric quality criteria for which they contain at least one outlier: green = 0, yellow = 1, orange = 2 and red = 3 or more. A red dot above a residue indicates a poor fit to the electron density ($RSRZ > 2$). Stretches of 2 or more consecutive residues without any outlier are shown as a green connector. Residues present in the sample, but not in the model, are shown in grey.

• Molecule 1: PEPSIN A



• Molecule 2: MAJOR PEPSIN INHIBITOR PI-3



4 Data and refinement statistics

Property	Value	Source
Space group	C 2 2 21	Depositor
Cell constants a, b, c, α , β , γ	65.37Å 97.59Å 136.39Å 90.00° 90.00° 90.00°	Depositor
Resolution (Å)	18.66 – 2.45 18.66 – 2.45	Depositor EDS
% Data completeness (in resolution range)	99.4 (18.66-2.45) 99.1 (18.66-2.45)	Depositor EDS
R_{merge}	0.08	Depositor
R_{sym}	(Not available)	Depositor
$\langle I/\sigma(I) \rangle$ ¹	5.21 (at 2.46Å)	Xtrriage
Refinement program	CNS 1.0	Depositor
R, R_{free}	0.218 , 0.290 0.211 , 0.286	Depositor DCC
R_{free} test set	1629 reflections (10.01%)	wwPDB-VP
Wilson B-factor (Å ²)	35.4	Xtrriage
Anisotropy	0.150	Xtrriage
Bulk solvent k_{sol} (e/Å ³), B_{sol} (Å ²)	0.31 , 46.5	EDS
L-test for twinning ²	$\langle L \rangle = 0.49$, $\langle L^2 \rangle = 0.33$	Xtrriage
Estimated twinning fraction	No twinning to report.	Xtrriage
F_o, F_c correlation	0.93	EDS
Total number of atoms	3617	wwPDB-VP
Average B, all atoms (Å ²)	41.0	wwPDB-VP

Xtrriage's analysis on translational NCS is as follows: *The largest off-origin peak in the Patterson function is 6.62% of the height of the origin peak. No significant pseudotranslation is detected.*

¹Intensities estimated from amplitudes.

²Theoretical values of $\langle |L| \rangle$, $\langle L^2 \rangle$ for acentric reflections are 0.5, 0.333 respectively for untwinned datasets, and 0.375, 0.2 for perfectly twinned datasets.

5 Model quality [i](#)

5.1 Standard geometry [i](#)

Bond lengths and bond angles in the following residue types are not validated in this section: MPD, SEP

The Z score for a bond length (or angle) is the number of standard deviations the observed value is removed from the expected value. A bond length (or angle) with $|Z| > 5$ is considered an outlier worth inspection. RMSZ is the root-mean-square of all Z scores of the bond lengths (or angles).

Mol	Chain	Bond lengths		Bond angles	
		RMSZ	# Z >5	RMSZ	# Z >5
1	A	0.41	0/2477	0.68	1/3389 (0.0%)
2	B	0.42	0/1103	0.59	0/1496
All	All	0.41	0/3580	0.65	1/4885 (0.0%)

There are no bond length outliers.

All (1) bond angle outliers are listed below:

Mol	Chain	Res	Type	Atoms	Z	Observed(°)	Ideal(°)
1	A	189	TYR	N-CA-C	-5.90	95.06	111.00

There are no chirality outliers.

There are no planarity outliers.

5.2 Too-close contacts [i](#)

In the following table, the Non-H and H(model) columns list the number of non-hydrogen atoms and hydrogen atoms in the chain respectively. The H(added) column lists the number of hydrogen atoms added and optimized by MolProbity. The Clashes column lists the number of clashes within the asymmetric unit, whereas Symm-Clashes lists symmetry-related clashes.

Mol	Chain	Non-H	H(model)	H(added)	Clashes	Symm-Clashes
1	A	2433	0	2253	69	0
2	B	1074	0	1035	35	0
3	A	8	0	14	4	0
4	A	73	0	0	0	0
4	B	29	0	0	4	0
All	All	3617	0	3302	101	0

The all-atom clashscore is defined as the number of clashes found per 1000 atoms (including

hydrogen atoms). The all-atom clashscore for this structure is 15.

All (101) close contacts within the same asymmetric unit are listed below, sorted by their clash magnitude.

Atom-1	Atom-2	Interatomic distance (Å)	Clash overlap (Å)
1:A:198:THR:HG22	1:A:203:THR:HA	1.33	1.10
2:B:60:THR:HG22	2:B:62:PRO:HD3	1.44	0.99
1:A:277:GLN:HG3	1:A:282:CYS:SG	2.22	0.79
2:B:18:ASN:ND2	2:B:35:ILE:HG12	2.00	0.77
1:A:76:GLY:HA3	2:B:1:GLN:NE2	2.01	0.76
1:A:112:LEU:HD11	3:A:327:MPD:H13	1.70	0.72
1:A:265:VAL:HG13	1:A:267:TYR:HE1	1.55	0.70
1:A:265:VAL:HG13	1:A:267:TYR:CE1	2.28	0.69
2:B:115:GLU:O	2:B:119:GLU:HG2	1.91	0.69
1:A:222:THR:HG22	1:A:287:GLU:HB3	1.74	0.68
1:A:107:GLU:HB2	1:A:112:LEU:HD23	1.76	0.67
1:A:240:ASN:HD21	1:A:244:GLU:HG3	1.59	0.67
1:A:248:SER:HB2	1:A:251:SER:OG	1.95	0.67
2:B:64:PRO:HG2	4:B:155:HOH:O	1.96	0.64
1:A:86:TYR:OH	2:B:12:ILE:HD11	1.99	0.63
2:B:60:THR:HG22	2:B:62:PRO:CD	2.25	0.63
1:A:232:GLN:HG3	1:A:245:MET:HE2	1.82	0.60
1:A:293:THR:HG22	1:A:296:GLY:O	2.01	0.60
1:A:180:ASN:HD22	1:A:180:ASN:N	2.00	0.60
1:A:172:SER:HA	1:A:175:TYR:CE1	2.37	0.60
1:A:10:LEU:HA	1:A:159:ASP:OD1	2.02	0.59
1:A:125:TYR:CE2	1:A:187:GLU:HG2	2.36	0.59
1:A:237:ALA:HB2	1:A:247:ILE:HD12	1.84	0.59
1:A:6:LEU:HD11	1:A:165:VAL:HG23	1.85	0.59
1:A:198:THR:HG22	1:A:203:THR:CA	2.22	0.58
1:A:240:ASN:HD22	1:A:246:VAL:CG1	2.18	0.57
1:A:240:ASN:ND2	1:A:246:VAL:HG13	2.20	0.56
1:A:219:SER:O	1:A:304:VAL:HG23	2.05	0.56
2:B:17:ASP:O	2:B:18:ASN:HB2	2.06	0.55
1:A:302:GLY:O	1:A:306:ILE:HG12	2.06	0.55
1:A:255:LEU:HD22	1:A:256:PRO:HD2	1.90	0.54
1:A:262:ILE:O	1:A:265:VAL:HG12	2.07	0.53
2:B:89:ASP:O	2:B:91:LYS:HG3	2.08	0.53
1:A:120:ILE:HD11	3:A:327:MPD:H11	1.91	0.53
1:A:271:PRO:O	1:A:275:ILE:HB	2.09	0.52
1:A:99:GLN:OE1	1:A:136:VAL:HA	2.09	0.52
2:B:18:ASN:HD21	2:B:35:ILE:HG23	1.73	0.52
1:A:4:GLU:HG2	1:A:31:PHE:CZ	2.45	0.52

Continued on next page...

Continued from previous page...

Atom-1	Atom-2	Interatomic distance (Å)	Clash overlap (Å)
1:A:259:VAL:HG22	1:A:268:PRO:HA	1.91	0.51
2:B:60:THR:CG2	2:B:62:PRO:HD3	2.30	0.51
1:A:155:LEU:HD12	1:A:306:ILE:HB	1.92	0.51
1:A:164:VAL:HG22	1:A:165:VAL:N	2.25	0.51
1:A:240:ASN:HD22	1:A:246:VAL:HG11	1.77	0.50
1:A:274:TYR:HB2	1:A:286:PHE:CE1	2.47	0.49
2:B:5:SER:OG	2:B:75:ASN:HB2	2.13	0.48
2:B:41:PHE:HE1	2:B:60:THR:HG23	1.78	0.48
2:B:63:PRO:HG2	2:B:65:PHE:CZ	2.47	0.48
1:A:240:ASN:HD21	1:A:244:GLU:CG	2.25	0.48
2:B:27:TRP:CZ3	2:B:85:LYS:HD2	2.48	0.48
1:A:49:ALA:CB	1:A:112:LEU:HB3	2.44	0.48
1:A:131:SER:HA	2:B:73:MET:SD	2.54	0.47
1:A:125:TYR:CZ	1:A:187:GLU:HG2	2.49	0.47
2:B:147:THR:O	2:B:148:VAL:C	2.53	0.47
2:B:18:ASN:HD21	2:B:35:ILE:HG12	1.77	0.47
1:A:232:GLN:HE22	1:A:286:PHE:HB2	1.79	0.46
3:A:327:MPD:H53	4:B:174:HOH:O	2.15	0.46
1:A:195:ASP:HB2	1:A:261:THR:HB	1.98	0.46
1:A:120:ILE:HD11	3:A:327:MPD:H4	1.99	0.46
1:A:150:LEU:HB3	1:A:314:ASP:HA	1.98	0.45
1:A:255:LEU:CD2	1:A:256:PRO:HD2	2.46	0.45
1:A:292:PRO:HD2	2:B:139:PRO:HG2	1.98	0.45
2:B:84:ASN:ND2	4:B:160:HOH:O	2.49	0.45
1:A:224:PRO:HD2	1:A:299:TRP:CE2	2.52	0.45
2:B:65:PHE:C	2:B:65:PHE:CD1	2.90	0.45
2:B:69:GLN:HA	4:B:168:HOH:O	2.17	0.44
1:A:255:LEU:HB2	1:A:271:PRO:HG3	1.99	0.44
1:A:220:LEU:HD21	1:A:276:LEU:HD11	1.97	0.44
2:B:48:CYS:HB3	2:B:54:ASP:O	2.17	0.44
1:A:274:TYR:CD1	1:A:286:PHE:HE1	2.36	0.44
2:B:19:GLN:HG2	2:B:21:PHE:CZ	2.53	0.44
1:A:65:GLU:HB2	1:A:86:TYR:HB2	2.00	0.43
1:A:308:GLN:C	1:A:325:VAL:HG13	2.38	0.43
2:B:18:ASN:HD22	2:B:35:ILE:HG12	1.81	0.43
1:A:12:THR:O	1:A:13:GLU:HG3	2.18	0.43
1:A:308:GLN:O	1:A:325:VAL:HG13	2.19	0.43
2:B:108:ARG:O	2:B:111:ILE:HG22	2.19	0.43
1:A:240:ASN:ND2	1:A:246:VAL:CG1	2.79	0.43
1:A:262:ILE:O	1:A:265:VAL:CG1	2.66	0.43
2:B:148:VAL:O	2:B:148:VAL:HG22	2.19	0.43

Continued on next page...

Continued from previous page...

Atom-1	Atom-2	Interatomic distance (Å)	Clash overlap (Å)
1:A:21:GLY:HA2	1:A:87:ASP:OD1	2.19	0.42
1:A:220:LEU:HD12	1:A:287:GLU:OE1	2.19	0.42
2:B:93:VAL:O	2:B:94:ARG:HB3	2.19	0.42
2:B:103:GLU:OE1	2:B:144:SER:N	2.53	0.42
1:A:33:THR:HA	1:A:123:LEU:HB2	2.01	0.42
1:A:259:VAL:HG11	1:A:266:GLN:HB3	2.01	0.42
1:A:103:LEU:HD12	1:A:103:LEU:N	2.35	0.41
1:A:314:ASP:OD1	1:A:316:ALA:HB3	2.20	0.41
2:B:49:THR:HG22	2:B:50:ASN:HD22	1.84	0.41
2:B:86:LEU:HD12	2:B:87:PHE:N	2.35	0.41
2:B:57:PRO:HA	2:B:60:THR:HB	2.01	0.41
2:B:119:GLU:HG2	2:B:119:GLU:H	1.68	0.41
1:A:112:LEU:HA	1:A:112:LEU:HD12	1.85	0.41
1:A:237:ALA:HA	1:A:247:ILE:HB	2.03	0.41
1:A:267:TYR:HA	1:A:268:PRO:HD2	1.96	0.41
1:A:190:TRP:CZ2	1:A:313:PHE:HB3	2.55	0.41
1:A:213:ILE:HG23	1:A:298:LEU:HD22	2.03	0.41
1:A:6:LEU:HD11	1:A:165:VAL:CG2	2.49	0.41
2:B:18:ASN:HD21	2:B:35:ILE:CG2	2.33	0.41
1:A:2:GLY:HA2	1:A:92:GLY:O	2.22	0.40
1:A:8:ASN:ND2	1:A:156:SER:OG	2.47	0.40
2:B:18:ASN:ND2	2:B:35:ILE:HG23	2.37	0.40

There are no symmetry-related clashes.

5.3 Torsion angles [i](#)

5.3.1 Protein backbone [i](#)

In the following table, the Percentiles column shows the percent Ramachandran outliers of the chain as a percentile score with respect to all X-ray entries followed by that with respect to entries of similar resolution.

The Analysed column shows the number of residues for which the backbone conformation was analysed, and the total number of residues.

Mol	Chain	Analysed	Favoured	Allowed	Outliers	Percentiles	
1	A	323/326 (99%)	297 (92%)	24 (7%)	2 (1%)	22	28
2	B	134/149 (90%)	124 (92%)	10 (8%)	0	100	100
All	All	457/475 (96%)	421 (92%)	34 (7%)	2 (0%)	30	38

All (2) Ramachandran outliers are listed below:

Mol	Chain	Res	Type
1	A	244	GLU
1	A	188	GLY

5.3.2 Protein sidechains [i](#)

In the following table, the Percentiles column shows the percent sidechain outliers of the chain as a percentile score with respect to all X-ray entries followed by that with respect to entries of similar resolution.

The Analysed column shows the number of residues for which the sidechain conformation was analysed, and the total number of residues.

Mol	Chain	Analysed	Rotameric	Outliers	Percentiles
1	A	274/274 (100%)	267 (97%)	7 (3%)	41 57
2	B	121/129 (94%)	116 (96%)	5 (4%)	26 39
All	All	395/403 (98%)	383 (97%)	12 (3%)	36 51

All (12) residues with a non-rotameric sidechain are listed below:

Mol	Chain	Res	Type
1	A	74	THR
1	A	107	GLU
1	A	112	LEU
1	A	160	ASP
1	A	180	ASN
1	A	194	LEU
1	A	242	ASP
2	B	4	PHE
2	B	33	ASP
2	B	36	GLN
2	B	46	GLU
2	B	65	PHE

Sometimes sidechains can be flipped to improve hydrogen bonding and reduce clashes. All (8) such sidechains are listed below:

Mol	Chain	Res	Type
1	A	55	GLN
1	A	143	GLN
1	A	180	ASN

Continued on next page...

Continued from previous page...

Mol	Chain	Res	Type
1	A	277	GLN
2	B	18	ASN
2	B	50	ASN
2	B	84	ASN
2	B	90	GLN

5.3.3 RNA [i](#)

There are no RNA molecules in this entry.

5.4 Non-standard residues in protein, DNA, RNA chains [i](#)

1 non-standard protein/DNA/RNA residue is modelled in this entry.

In the following table, the Counts columns list the number of bonds (or angles) for which Mogul statistics could be retrieved, the number of bonds (or angles) that are observed in the model and the number of bonds (or angles) that are defined in the Chemical Component Dictionary. The Link column lists molecule types, if any, to which the group is linked. The Z score for a bond length (or angle) is the number of standard deviations the observed value is removed from the expected value. A bond length (or angle) with $|Z| > 2$ is considered an outlier worth inspection. RMSZ is the root-mean-square of all Z scores of the bond lengths (or angles).

Mol	Type	Chain	Res	Link	Bond lengths			Bond angles		
					Counts	RMSZ	# Z > 2	Counts	RMSZ	# Z > 2
1	SEP	A	68	1	8,9,10	0.96	0	7,12,14	1.43	1 (14%)

In the following table, the Chirals column lists the number of chiral outliers, the number of chiral centers analysed, the number of these observed in the model and the number defined in the Chemical Component Dictionary. Similar counts are reported in the Torsion and Rings columns. '-' means no outliers of that kind were identified.

Mol	Type	Chain	Res	Link	Chirals	Torsions	Rings
1	SEP	A	68	1	-	3/6/8/10	-

There are no bond length outliers.

All (1) bond angle outliers are listed below:

Mol	Chain	Res	Type	Atoms	Z	Observed(°)	Ideal(°)
1	A	68	SEP	OG-CB-CA	3.25	111.30	108.14

There are no chirality outliers.

All (3) torsion outliers are listed below:

Mol	Chain	Res	Type	Atoms
1	A	68	SEP	CB-OG-P-O2P
1	A	68	SEP	CB-OG-P-O3P
1	A	68	SEP	CB-OG-P-O1P

There are no ring outliers.

No monomer is involved in short contacts.

5.5 Carbohydrates [i](#)

There are no oligosaccharides in this entry.

5.6 Ligand geometry [i](#)

1 ligand is modelled in this entry.

In the following table, the Counts columns list the number of bonds (or angles) for which Mogul statistics could be retrieved, the number of bonds (or angles) that are observed in the model and the number of bonds (or angles) that are defined in the Chemical Component Dictionary. The Link column lists molecule types, if any, to which the group is linked. The Z score for a bond length (or angle) is the number of standard deviations the observed value is removed from the expected value. A bond length (or angle) with $|Z| > 2$ is considered an outlier worth inspection. RMSZ is the root-mean-square of all Z scores of the bond lengths (or angles).

Mol	Type	Chain	Res	Link	Bond lengths			Bond angles		
					Counts	RMSZ	$\# Z > 2$	Counts	RMSZ	$\# Z > 2$
3	MPD	A	327	-	7,7,7	0.74	0	9,10,10	0.34	0

In the following table, the Chirals column lists the number of chiral outliers, the number of chiral centers analysed, the number of these observed in the model and the number defined in the Chemical Component Dictionary. Similar counts are reported in the Torsion and Rings columns. '-' means no outliers of that kind were identified.

Mol	Type	Chain	Res	Link	Chirals	Torsions	Rings
3	MPD	A	327	-	-	3/5/5/5	-

There are no bond length outliers.

There are no bond angle outliers.

There are no chirality outliers.

All (3) torsion outliers are listed below:

Mol	Chain	Res	Type	Atoms
3	A	327	MPD	C1-C2-C3-C4
3	A	327	MPD	CM-C2-C3-C4
3	A	327	MPD	O2-C2-C3-C4

There are no ring outliers.

1 monomer is involved in 4 short contacts:

Mol	Chain	Res	Type	Clashes	Symm-Clashes
3	A	327	MPD	4	0

5.7 Other polymers [i](#)

There are no such residues in this entry.

5.8 Polymer linkage issues [i](#)

There are no chain breaks in this entry.

6 Fit of model and data [i](#)

6.1 Protein, DNA and RNA chains [i](#)

In the following table, the column labelled ‘#RSRZ > 2’ contains the number (and percentage) of RSRZ outliers, followed by percent RSRZ outliers for the chain as percentile scores relative to all X-ray entries and entries of similar resolution. The OWAB column contains the minimum, median, 95th percentile and maximum values of the occupancy-weighted average B-factor per residue. The column labelled ‘Q < 0.9’ lists the number of (and percentage) of residues with an average occupancy less than 0.9.

Mol	Chain	Analysed	<RSRZ>	#RSRZ>2	OWAB(Å ²)	Q<0.9
1	A	325/326 (99%)	-0.03	13 (4%) 43 44	13, 33, 90, 110	0
2	B	138/149 (92%)	0.03	1 (0%) 84 85	12, 39, 64, 82	0
All	All	463/475 (97%)	-0.01	14 (3%) 52 55	12, 37, 85, 110	0

All (14) RSRZ outliers are listed below:

Mol	Chain	Res	Type	RSRZ
1	A	252	ILE	3.1
1	A	281	SER	2.9
1	A	280	ASP	2.9
1	A	247	ILE	2.8
1	A	204	ILE	2.6
1	A	274	TYR	2.5
1	A	249	CYS	2.5
1	A	199	MET	2.4
1	A	253	ASP	2.3
1	A	201	GLY	2.2
1	A	282	CYS	2.2
1	A	277	GLN	2.1
1	A	273	ALA	2.1
2	B	78	GLY	2.0

6.2 Non-standard residues in protein, DNA, RNA chains [i](#)

In the following table, the Atoms column lists the number of modelled atoms in the group and the number defined in the chemical component dictionary. The B-factors column lists the minimum, median, 95th percentile and maximum values of B factors of atoms in the group. The column labelled ‘Q < 0.9’ lists the number of atoms with occupancy less than 0.9.

Mol	Type	Chain	Res	Atoms	RSCC	RSR	B-factors(\AA^2)	Q<0.9
1	SEP	A	68	10/11	0.83	0.11	38,47,63,65	0

6.3 Carbohydrates [i](#)

There are no monosaccharides in this entry.

6.4 Ligands [i](#)

In the following table, the Atoms column lists the number of modelled atoms in the group and the number defined in the chemical component dictionary. The B-factors column lists the minimum, median, 95th percentile and maximum values of B factors of atoms in the group. The column labelled 'Q< 0.9' lists the number of atoms with occupancy less than 0.9.

Mol	Type	Chain	Res	Atoms	RSCC	RSR	B-factors(\AA^2)	Q<0.9
3	MPD	A	327	8/8	0.89	0.12	45,50,51,53	0

6.5 Other polymers [i](#)

There are no such residues in this entry.