



# Full wwPDB X-ray Structure Validation Report ⓘ

Mar 11, 2018 – 12:50 am GMT

PDB ID : 6F6I  
Title : CRYSTAL STRUCTURE OF EBOLAVIRUS GLYCOPROTEIN IN COM-  
PLEX WITH PAROXETINE  
Authors : Ren, J.; Zhao, Y.; Fry, E.E.; Stuart, D.I.  
Deposited on : 2017-12-05  
Resolution : 2.40 Å(reported)

This is a Full wwPDB X-ray Structure Validation Report for a publicly released PDB entry.

We welcome your comments at [validation@mail.wwpdb.org](mailto:validation@mail.wwpdb.org)

A user guide is available at

<https://www.wwpdb.org/validation/2017/XrayValidationReportHelp>

with specific help available everywhere you see the ⓘ symbol.

---

The following versions of software and data (see [references ⓘ](#)) were used in the production of this report:

MolProbity : 4.02b-467  
Mogul : 1.7.3 (157068), CSD as539be (2018)  
Xtrriage (Phenix) : 1.13  
EDS : trunk30967  
Percentile statistics : 20171227.v01 (using entries in the PDB archive December 27th 2017)  
Refmac : 5.8.0158  
CCP4 : 7.0 (Gargrove)  
Ideal geometry (proteins) : Engh & Huber (2001)  
Ideal geometry (DNA, RNA) : Parkinson et al. (1996)  
Validation Pipeline (wwPDB-VP) : trunk30967

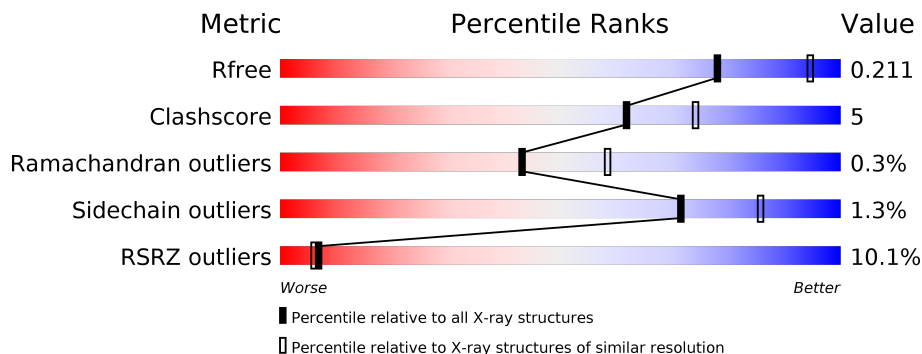
# 1 Overall quality at a glance

The following experimental techniques were used to determine the structure:

*X-RAY DIFFRACTION*

The reported resolution of this entry is 2.40 Å.

Percentile scores (ranging between 0-100) for global validation metrics of the entry are shown in the following graphic. The table shows the number of entries on which the scores are based.



Metric	Whole archive (#Entries)	Similar resolution (#Entries, resolution range(Å))
$R_{free}$	111664	3481 (2.40-2.40)
Clashscore	122126	3956 (2.40-2.40)
Ramachandran outliers	120053	3897 (2.40-2.40)
Sidechain outliers	120020	3898 (2.40-2.40)
RSRZ outliers	108989	3386 (2.40-2.40)

The table below summarises the geometric issues observed across the polymeric chains and their fit to the electron density. The red, orange, yellow and green segments on the lower bar indicate the fraction of residues that contain outliers for  $\geq 3$ , 2, 1 and 0 types of geometric quality criteria. A grey segment represents the fraction of residues that are not modelled. The numeric value for each fraction is indicated below the corresponding segment, with a dot representing fractions  $\leq 5\%$ . The upper red bar (where present) indicates the fraction of residues that have poor fit to the electron density. The numeric value is given above the bar.

Mol	Chain	Length	Quality of chain
1	A	330	 5% 67% 9% 24%
2	B	168	 13% 68% 10% 22%

The following table lists non-polymeric compounds, carbohydrate monomers and non-standard residues in protein, DNA, RNA chains that are outliers for geometric or electron-density-fit criteria:

Mol	Type	Chain	Res	Chirality	Geometry	Clashes	Electron density
3	NAG	A	502	-	-	-	X
8	MAN	B	704	-	-	-	X

## 2 Entry composition [i](#)

There are 9 unique types of molecules in this entry. The entry contains 3320 atoms, of which 0 are hydrogens and 0 are deuteriums.

In the tables below, the ZeroOcc column contains the number of atoms modelled with zero occupancy, the AltConf column contains the number of residues with at least one atom in alternate conformation and the Trace column contains the number of residues modelled with at most 2 atoms.

- Molecule 1 is a protein called Envelope glycoprotein,GP,GP1.

Mol	Chain	Residues	Atoms					ZeroOcc	AltConf	Trace
			Total	C	N	O	S			
1	A	251	2018	1289	342	382	5	0	9	0

There are 5 discrepancies between the modelled and reference sequences:

Chain	Residue	Modelled	Actual	Comment	Reference
A	28	GLU	-	expression tag	UNP A0A0E3NBB1
A	29	THR	-	expression tag	UNP A0A0E3NBB1
A	30	GLY	-	expression tag	UNP A0A0E3NBB1
A	31	ARG	-	expression tag	UNP A0A0E3NBB1
A	42	ALA	THR	engineered mutation	UNP A0A0E3NBB1

- Molecule 2 is a protein called Envelope glycoprotein.

Mol	Chain	Residues	Atoms					ZeroOcc	AltConf	Trace
			Total	C	N	O	S			
2	B	131	1035	660	177	192	6	0	0	0

There are 38 discrepancies between the modelled and reference sequences:

Chain	Residue	Modelled	Actual	Comment	Reference
B	613	ALA	HIS	engineered mutation	UNP A0A0U3BWW0
B	633	GLY	-	expression tag	UNP A0A0U3BWW0
B	634	SER	-	expression tag	UNP A0A0U3BWW0
B	635	GLY	-	expression tag	UNP A0A0U3BWW0
B	636	TYR	-	expression tag	UNP A0A0U3BWW0
B	637	ILE	-	expression tag	UNP A0A0U3BWW0
B	638	PRO	-	expression tag	UNP A0A0U3BWW0
B	639	GLU	-	expression tag	UNP A0A0U3BWW0
B	640	ALA	-	expression tag	UNP A0A0U3BWW0
B	641	PRO	-	expression tag	UNP A0A0U3BWW0
B	642	ARG	-	expression tag	UNP A0A0U3BWW0

*Continued on next page...*

*Continued from previous page...*

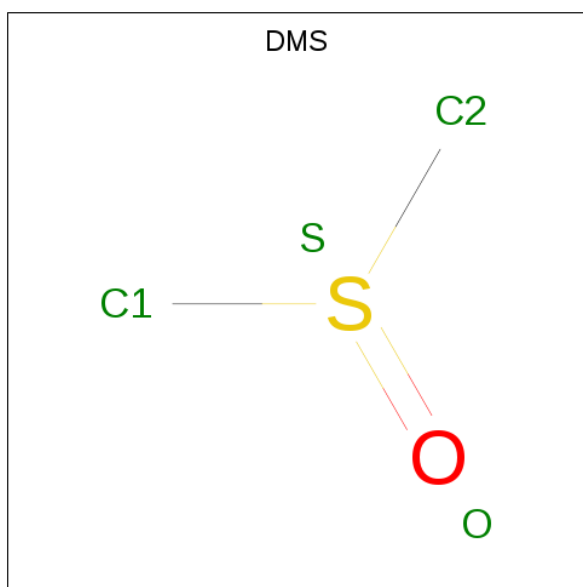
Chain	Residue	Modelled	Actual	Comment	Reference
B	643	ASP	-	expression tag	UNP A0A0U3BWW0
B	644	GLY	-	expression tag	UNP A0A0U3BWW0
B	645	GLN	-	expression tag	UNP A0A0U3BWW0
B	646	ALA	-	expression tag	UNP A0A0U3BWW0
B	647	TYR	-	expression tag	UNP A0A0U3BWW0
B	648	VAL	-	expression tag	UNP A0A0U3BWW0
B	649	ARG	-	expression tag	UNP A0A0U3BWW0
B	650	LYS	-	expression tag	UNP A0A0U3BWW0
B	651	ASP	-	expression tag	UNP A0A0U3BWW0
B	652	GLY	-	expression tag	UNP A0A0U3BWW0
B	653	GLU	-	expression tag	UNP A0A0U3BWW0
B	654	TRP	-	expression tag	UNP A0A0U3BWW0
B	655	VAL	-	expression tag	UNP A0A0U3BWW0
B	656	LEU	-	expression tag	UNP A0A0U3BWW0
B	657	LEU	-	expression tag	UNP A0A0U3BWW0
B	658	SER	-	expression tag	UNP A0A0U3BWW0
B	659	THR	-	expression tag	UNP A0A0U3BWW0
B	660	PHE	-	expression tag	UNP A0A0U3BWW0
B	661	LEU	-	expression tag	UNP A0A0U3BWW0
B	662	GLY	-	expression tag	UNP A0A0U3BWW0
B	663	THR	-	expression tag	UNP A0A0U3BWW0
B	664	HIS	-	expression tag	UNP A0A0U3BWW0
B	665	HIS	-	expression tag	UNP A0A0U3BWW0
B	666	HIS	-	expression tag	UNP A0A0U3BWW0
B	667	HIS	-	expression tag	UNP A0A0U3BWW0
B	668	HIS	-	expression tag	UNP A0A0U3BWW0
B	669	HIS	-	expression tag	UNP A0A0U3BWW0

- Molecule 3 is N-ACETYL-D-GLUCOSAMINE (three-letter code: NAG) (formula: C<sub>8</sub>H<sub>15</sub>NO<sub>6</sub>).



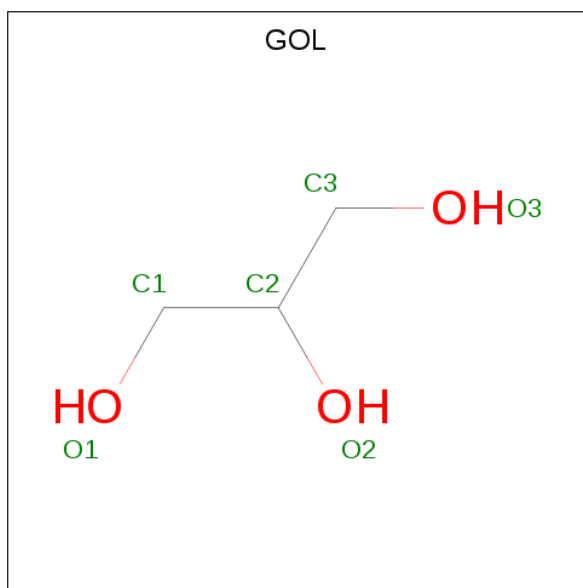
Mol	Chain	Residues	Atoms				ZeroOcc	AltConf
			Total	C	N	O		
3	A	1	Total 14	8	1	5	0	0
3	A	1	Total 14	8	1	5	0	0
3	A	1	Total 14	8	1	5	0	0
3	A	1	Total 14	8	1	5	0	0
3	B	1	Total 14	8	1	5	0	0
3	B	1	Total 14	8	1	5	0	0

- Molecule 4 is DIMETHYL SULFOXIDE (three-letter code: DMS) (formula: C<sub>2</sub>H<sub>6</sub>OS).



Mol	Chain	Residues	Atoms			ZeroOcc	AltConf	
			Total	C	O			S
4	A	1	4	2	1	1	0	0

- Molecule 5 is GLYCEROL (three-letter code: GOL) (formula:  $C_3H_8O_3$ ).



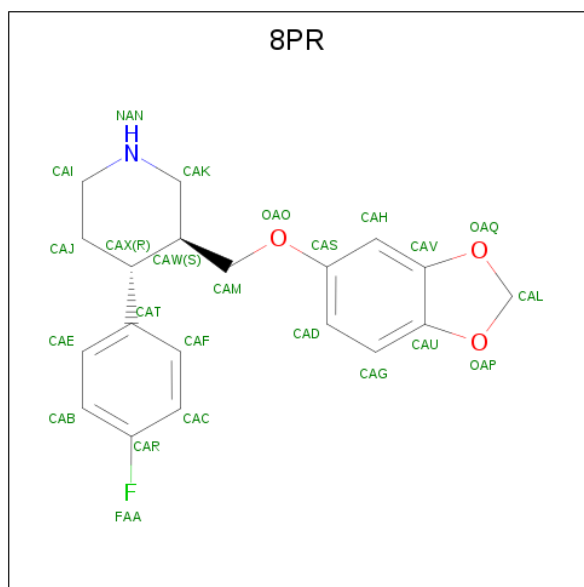
Mol	Chain	Residues	Atoms			ZeroOcc	AltConf
			Total	C	O		
5	A	1	6	3	3	0	0
5	A	1	6	3	3	0	0
5	A	1	6	3	3	0	0

*Continued on next page...*

Continued from previous page...

Mol	Chain	Residues	Atoms			ZeroOcc	AltConf
5	B	1	Total	C	O	0	0
			6	3	3		
5	B	1	Total	C	O	0	0
			6	3	3		

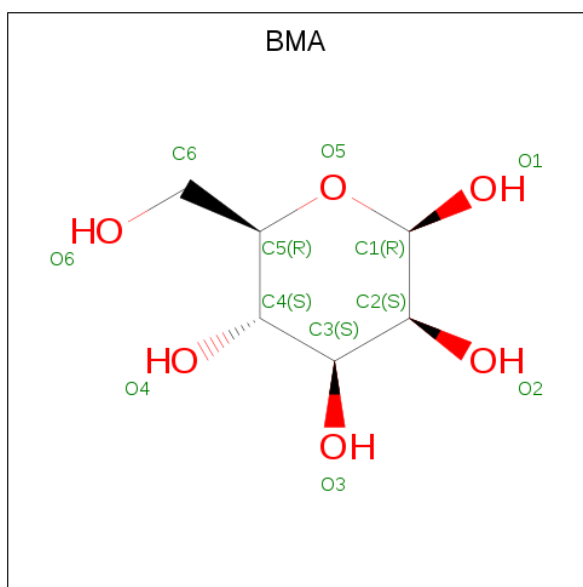
- Molecule 6 is Paroxetine (three-letter code: 8PR) (formula: C<sub>19</sub>H<sub>20</sub>FNO<sub>3</sub>).



Mol	Chain	Residues	Atoms					ZeroOcc	AltConf
6	A	1	Total	C	F	N	O	0	0
			24	19	1	1	3		

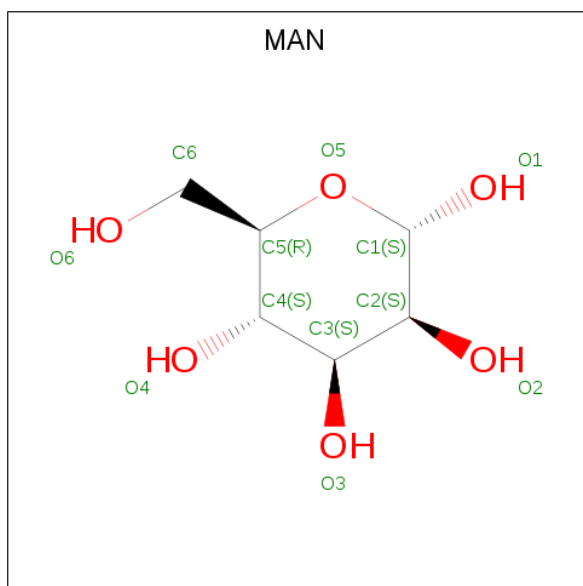
- Molecule 7 is BETA-D-MANNOSE (three-letter code: BMA) (formula: C<sub>6</sub>H<sub>12</sub>O<sub>6</sub>).





Mol	Chain	Residues	Atoms			ZeroOcc	AltConf
7	B	1	Total	C	O	0	0
			11	6	5		

- Molecule 8 is ALPHA-D-MANNOSE (three-letter code: MAN) (formula: C<sub>6</sub>H<sub>12</sub>O<sub>6</sub>).



Mol	Chain	Residues	Atoms			ZeroOcc	AltConf
8	B	1	Total	C	O	0	0
			11	6	5		

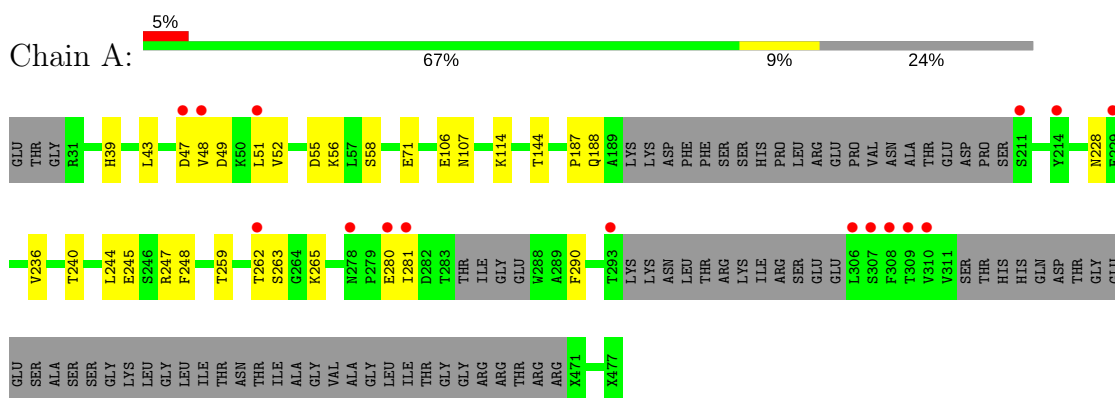
- Molecule 9 is water.

<b>Mol</b>	<b>Chain</b>	<b>Residues</b>	<b>Atoms</b>		<b>ZeroOcc</b>	<b>AltConf</b>
9	A	68	Total 68	O 68	0	0
9	B	35	Total 35	O 35	0	0

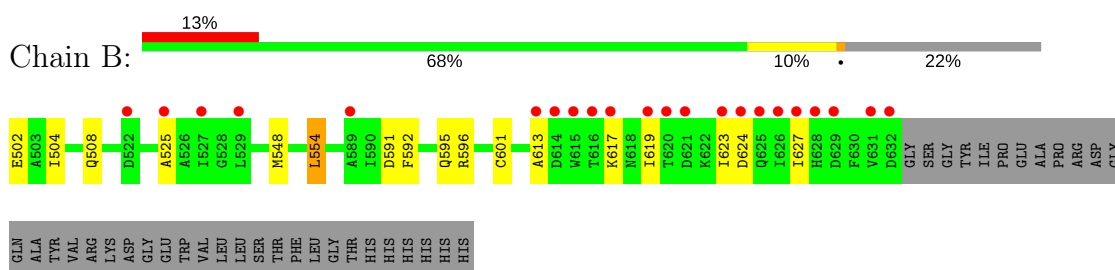
### 3 Residue-property plots [i](#)

These plots are drawn for all protein, RNA and DNA chains in the entry. The first graphic for a chain summarises the proportions of the various outlier classes displayed in the second graphic. The second graphic shows the sequence view annotated by issues in geometry and electron density. Residues are color-coded according to the number of geometric quality criteria for which they contain at least one outlier: green = 0, yellow = 1, orange = 2 and red = 3 or more. A red dot above a residue indicates a poor fit to the electron density ( $RSRZ > 2$ ). Stretches of 2 or more consecutive residues without any outlier are shown as a green connector. Residues present in the sample, but not in the model, are shown in grey.

- Molecule 1: Envelope glycoprotein, GP, GP1



- Molecule 2: Envelope glycoprotein



## 4 Data and refinement statistics

Property	Value	Source
Space group	H 3 2	Depositor
Cell constants a, b, c, $\alpha$ , $\beta$ , $\gamma$	113.68Å 113.68Å 306.26Å 90.00° 90.00° 120.00°	Depositor
Resolution (Å)	52.01 – 2.40 52.01 – 2.40	Depositor EDS
% Data completeness (in resolution range)	99.7 (52.01-2.40) 99.8 (52.01-2.40)	Depositor EDS
$R_{merge}$	0.09	Depositor
$R_{sym}$	(Not available)	Depositor
$\langle I/\sigma(I) \rangle$ <sup>1</sup>	1.71 (at 2.39Å)	Xtrriage
Refinement program	PHENIX (dev_2940: ???)	Depositor
R, $R_{free}$	0.192 , 0.212 0.192 , 0.211	Depositor DCC
$R_{free}$ test set	1521 reflections (5.04%)	wwPDB-VP
Wilson B-factor (Å <sup>2</sup> )	61.8	Xtrriage
Anisotropy	0.401	Xtrriage
Bulk solvent $k_{sol}$ (e/Å <sup>3</sup> ), $B_{sol}$ (Å <sup>2</sup> )	0.33 , 67.2	EDS
L-test for twinning <sup>2</sup>	$\langle  L  \rangle = 0.49$ , $\langle L^2 \rangle = 0.33$	Xtrriage
Estimated twinning fraction	No twinning to report.	Xtrriage
$F_o, F_c$ correlation	0.96	EDS
Total number of atoms	3320	wwPDB-VP
Average B, all atoms (Å <sup>2</sup> )	84.0	wwPDB-VP

Xtrriage's analysis on translational NCS is as follows: *The largest off-origin peak in the Patterson function is 3.11% of the height of the origin peak. No significant pseudotranslation is detected.*

<sup>1</sup>Intensities estimated from amplitudes.

<sup>2</sup>Theoretical values of  $\langle |L| \rangle$ ,  $\langle L^2 \rangle$  for acentric reflections are 0.5, 0.333 respectively for untwinned datasets, and 0.375, 0.2 for perfectly twinned datasets.

## 5 Model quality

### 5.1 Standard geometry

Bond lengths and bond angles in the following residue types are not validated in this section: GOL, BMA, NAG, DMS, 8PR, MAN

The Z score for a bond length (or angle) is the number of standard deviations the observed value is removed from the expected value. A bond length (or angle) with  $|Z| > 5$  is considered an outlier worth inspection. RMSZ is the root-mean-square of all Z scores of the bond lengths (or angles).

Mol	Chain	Bond lengths		Bond angles	
		RMSZ	# Z  >5	RMSZ	# Z  >5
1	A	0.25	0/2036	0.45	0/2766
2	B	0.27	0/1060	0.44	0/1445
All	All	0.25	0/3096	0.45	0/4211

There are no bond length outliers.

There are no bond angle outliers.

There are no chirality outliers.

There are no planarity outliers.

### 5.2 Too-close contacts

In the following table, the Non-H and H(model) columns list the number of non-hydrogen atoms and hydrogen atoms in the chain respectively. The H(added) column lists the number of hydrogen atoms added and optimized by MolProbity. The Clashes column lists the number of clashes within the asymmetric unit, whereas Symm-Clashes lists symmetry related clashes.

Mol	Chain	Non-H	H(model)	H(added)	Clashes	Symm-Clashes
1	A	2018	0	1938	22	0
2	B	1035	0	1001	14	0
3	A	56	0	52	0	0
3	B	28	0	24	1	0
4	A	4	0	6	0	0
5	A	18	0	24	1	0
5	B	12	0	16	0	0
6	A	24	0	20	0	0
7	B	11	0	9	0	0
8	B	11	0	10	0	0
9	A	68	0	0	0	0

*Continued on next page...*

Continued from previous page...

Mol	Chain	Non-H	H(model)	H(added)	Clashes	Symm-Clashes
9	B	35	0	0	0	0
All	All	3320	0	3100	30	0

The all-atom clashscore is defined as the number of clashes found per 1000 atoms (including hydrogen atoms). The all-atom clashscore for this structure is 5.

All (30) close contacts within the same asymmetric unit are listed below, sorted by their clash magnitude.

Atom-1	Atom-2	Interatomic distance (Å)	Clash overlap (Å)
1:A:52[B]:VAL:O	2:B:596:ARG:NH2	2.35	0.59
1:A:187:PRO:HA	5:A:508:GOL:H32	1.84	0.59
1:A:56:LYS:HZ3	1:A:58:SER:HB3	1.68	0.58
1:A:106:GLU:HG3	1:A:290:PHE:CD1	2.39	0.58
1:A:56:LYS:NZ	1:A:58:SER:HB3	2.23	0.54
1:A:71:GLU:OE2	1:A:107:ASN:N	2.36	0.54
2:B:623:ILE:HD12	2:B:627:ILE:HG12	1.90	0.53
1:A:247:ARG:NH1	1:A:281:ILE:O	2.40	0.53
1:A:52[A]:VAL:O	2:B:596:ARG:NH2	2.41	0.53
1:A:228:ASN:OD1	1:A:228:ASN:N	2.41	0.52
1:A:48[B]:VAL:HG21	2:B:591:ASP:HB3	1.91	0.52
2:B:613:ALA:O	2:B:617:LYS:HG2	2.15	0.46
2:B:624:ASP:HA	2:B:627:ILE:HG13	1.99	0.44
1:A:236:VAL:HB	1:A:240:THR:HB	1.98	0.44
2:B:548:MET:HE3	2:B:548:MET:HB2	1.80	0.44
2:B:504:ILE:H	2:B:504:ILE:HG13	1.65	0.44
2:B:619:ILE:O	2:B:623:ILE:HG23	2.18	0.44
1:A:48[B]:VAL:HB	2:B:592:PHE:HA	2.00	0.43
1:A:47[A]:ASP:OD1	2:B:502:GLU:N	2.50	0.43
1:A:56:LYS:O	1:A:188:GLN:NE2	2.52	0.43
1:A:49[B]:ASP:HA	2:B:595:GLN:HG2	2.01	0.43
1:A:39[A]:HIS:HE2	1:A:55:ASP:CG	2.22	0.43
1:A:244:LEU:HD12	1:A:248:PHE:HD2	1.85	0.42
2:B:554:LEU:HD12	2:B:554:LEU:HA	1.89	0.42
2:B:508:GLN:NE2	3:B:701:NAG:O6	2.53	0.41
1:A:259:THR:HA	1:A:262:THR:HG22	2.03	0.41
1:A:263:SER:HB3	1:A:265:LYS:NZ	2.35	0.41
1:A:245:GLU:OE2	1:A:247:ARG:NH2	2.55	0.40
1:A:114:LYS:O	1:A:144:THR:HA	2.21	0.40
1:A:280:GLU:HG2	1:A:281:ILE:HG13	2.03	0.40

There are no symmetry-related clashes.

## 5.3 Torsion angles [i](#)

### 5.3.1 Protein backbone [i](#)

In the following table, the Percentiles column shows the percent Ramachandran outliers of the chain as a percentile score with respect to all X-ray entries followed by that with respect to entries of similar resolution.

The Analysed column shows the number of residues for which the backbone conformation was analysed, and the total number of residues.

Mol	Chain	Analysed	Favoured	Allowed	Outliers	Percentiles	
1	A	245/330 (74%)	237 (97%)	8 (3%)	0	100	100
2	B	129/168 (77%)	119 (92%)	9 (7%)	1 (1%)	21	31
All	All	374/498 (75%)	356 (95%)	17 (4%)	1 (0%)	43	58

All (1) Ramachandran outliers are listed below:

Mol	Chain	Res	Type
2	B	525	ALA

### 5.3.2 Protein sidechains [i](#)

In the following table, the Percentiles column shows the percent sidechain outliers of the chain as a percentile score with respect to all X-ray entries followed by that with respect to entries of similar resolution.

The Analysed column shows the number of residues for which the sidechain conformation was analysed, and the total number of residues.

Mol	Chain	Analysed	Rotameric	Outliers	Percentiles	
1	A	216/273 (79%)	213 (99%)	3 (1%)	69	84
2	B	109/139 (78%)	107 (98%)	2 (2%)	62	79
All	All	325/412 (79%)	320 (98%)	5 (2%)	71	83

All (5) residues with a non-rotameric sidechain are listed below:

Mol	Chain	Res	Type
1	A	43	LEU
1	A	51[A]	LEU
1	A	51[B]	LEU
2	B	554	LEU
2	B	601	CYS

Some sidechains can be flipped to improve hydrogen bonding and reduce clashes. All (6) such sidechains are listed below:

Mol	Chain	Res	Type
1	A	40	ASN
1	A	139	HIS
1	A	243	GLN
2	B	508	GLN
2	B	514	ASN
2	B	595	GLN

### 5.3.3 RNA [i](#)

There are no RNA molecules in this entry.

### 5.4 Non-standard residues in protein, DNA, RNA chains [i](#)

There are no non-standard protein/DNA/RNA residues in this entry.

### 5.5 Carbohydrates [i](#)

There are no carbohydrates in this entry.

### 5.6 Ligand geometry [i](#)

15 ligands are modelled in this entry.

In the following table, the Counts columns list the number of bonds (or angles) for which Mogul statistics could be retrieved, the number of bonds (or angles) that are observed in the model and the number of bonds (or angles) that are defined in the Chemical Component Dictionary. The Link column lists molecule types, if any, to which the group is linked. The Z score for a bond length (or angle) is the number of standard deviations the observed value is removed from the expected value. A bond length (or angle) with  $|Z| > 2$  is considered an outlier worth inspection. RMSZ is the root-mean-square of all Z scores of the bond lengths (or angles).

Mol	Type	Chain	Res	Link	Bond lengths			Bond angles		
					Counts	RMSZ	# Z  > 2	Counts	RMSZ	# Z  > 2
3	NAG	A	501	1	14,14,15	0.22	0	17,19,21	0.51	0
3	NAG	A	502	1	14,14,15	0.19	0	17,19,21	0.54	0
3	NAG	A	503	1	14,14,15	0.28	0	17,19,21	0.49	0
3	NAG	A	504	1	14,14,15	0.73	1 (7%)	17,19,21	0.94	1 (5%)
4	DMS	A	505	-	3,3,3	0.65	0	3,3,3	0.48	0
5	GOL	A	506	-	5,5,5	0.91	0	5,5,5	0.99	0



Mol	Type	Chain	Res	Link	Bond lengths			Bond angles		
					Counts	RMSZ	# Z  > 2	Counts	RMSZ	# Z  > 2
5	GOL	A	507	-	5,5,5	0.90	0	5,5,5	0.99	0
5	GOL	A	508	-	5,5,5	0.91	0	5,5,5	0.97	0
6	8PR	A	509	-	26,27,27	1.47	5 (19%)	33,37,37	2.14	15 (45%)
3	NAG	B	701	3,2	14,14,15	0.21	0	17,19,21	0.57	0
3	NAG	B	702	3,7	14,14,15	0.20	0	17,19,21	0.52	0
7	BMA	B	703	8,3	11,11,12	0.52	0	15,15,17	0.78	0
8	MAN	B	704	7	11,11,12	1.56	2 (18%)	15,15,17	2.11	4 (26%)
5	GOL	B	705	-	5,5,5	0.92	0	5,5,5	1.02	0
5	GOL	B	706	-	5,5,5	0.92	0	5,5,5	0.97	0

In the following table, the Chirals column lists the number of chiral outliers, the number of chiral centers analysed, the number of these observed in the model and the number defined in the Chemical Component Dictionary. Similar counts are reported in the Torsion and Rings columns. '-' means no outliers of that kind were identified.

Mol	Type	Chain	Res	Link	Chirals	Torsions	Rings
3	NAG	A	501	1	-	0/6/23/26	0/1/1/1
3	NAG	A	502	1	-	0/6/23/26	0/1/1/1
3	NAG	A	503	1	-	0/6/23/26	0/1/1/1
3	NAG	A	504	1	-	0/6/23/26	0/1/1/1
4	DMS	A	505	-	-	0/0/0/0	0/0/0/0
5	GOL	A	506	-	-	0/4/4/4	0/0/0/0
5	GOL	A	507	-	-	0/4/4/4	0/0/0/0
5	GOL	A	508	-	-	0/4/4/4	0/0/0/0
6	8PR	A	509	-	-	0/9/26/26	0/4/4/4
3	NAG	B	701	3,2	-	0/6/23/26	0/1/1/1
3	NAG	B	702	3,7	-	0/6/23/26	0/1/1/1
7	BMA	B	703	8,3	-	0/2/19/22	0/1/1/1
8	MAN	B	704	7	-	0/2/19/22	0/1/1/1
5	GOL	B	705	-	-	0/4/4/4	0/0/0/0
5	GOL	B	706	-	-	0/4/4/4	0/0/0/0

All (8) bond length outliers are listed below:

Mol	Chain	Res	Type	Atoms	Z	Observed(Å)	Ideal(Å)
6	A	509	8PR	CAJ-CAX	-2.02	1.51	1.53
6	A	509	8PR	CAK-NAN	2.30	1.50	1.46
3	A	504	NAG	C1-C2	2.58	1.56	1.52
8	B	704	MAN	O5-C1	2.62	1.48	1.43
6	A	509	8PR	OAP-CAU	2.82	1.41	1.38
6	A	509	8PR	OAQ-CAV	2.90	1.42	1.38
6	A	509	8PR	CAT-CAX	4.00	1.58	1.51

Continued on next page...

Continued from previous page...

Mol	Chain	Res	Type	Atoms	Z	Observed(Å)	Ideal(Å)
8	B	704	MAN	C1-C2	4.17	1.62	1.52

All (20) bond angle outliers are listed below:

Mol	Chain	Res	Type	Atoms	Z	Observed(°)	Ideal(°)
6	A	509	8PR	CAE-CAT-CAX	-4.71	111.98	121.08
6	A	509	8PR	OAD-CAS-CAH	-2.97	105.58	119.84
6	A	509	8PR	CAT-CAX-CAW	-2.86	108.55	114.05
6	A	509	8PR	CAJ-CAX-CAT	-2.74	107.83	112.82
8	B	704	MAN	O2-C2-C3	-2.38	105.54	110.19
6	A	509	8PR	CAC-CAR-CAB	-2.03	120.09	122.86
6	A	509	8PR	CAL-OAQ-CAV	2.09	108.11	105.34
6	A	509	8PR	FAA-CAR-CAB	2.10	122.21	118.53
6	A	509	8PR	CAI-CAJ-CAX	2.28	113.32	111.42
6	A	509	8PR	CAL-OAP-CAU	2.28	108.37	105.34
6	A	509	8PR	OAP-CAU-CAG	2.44	131.98	127.85
6	A	509	8PR	CAK-CAW-CAX	2.74	114.42	110.03
6	A	509	8PR	OAD-CAS-CAD	2.82	133.86	119.95
8	B	704	MAN	O5-C1-C2	2.91	115.31	110.78
6	A	509	8PR	OAQ-CAV-CAH	2.96	131.87	127.86
3	A	504	NAG	C1-O5-C5	3.18	116.56	112.19
6	A	509	8PR	CAJ-CAX-CAW	3.52	113.90	109.64
6	A	509	8PR	CAF-CAT-CAX	3.61	128.06	121.08
8	B	704	MAN	C1-C2-C3	3.87	114.56	109.66
8	B	704	MAN	C1-O5-C5	5.68	120.01	112.19

There are no chirality outliers.

There are no torsion outliers.

There are no ring outliers.

2 monomers are involved in 2 short contacts:

Mol	Chain	Res	Type	Clashes	Symm-Clashes
5	A	508	GOL	1	0
3	B	701	NAG	1	0

## 5.7 Other polymers [i](#)

There are no such residues in this entry.

## 5.8 Polymer linkage issues

There are no chain breaks in this entry.

## 6 Fit of model and data [i](#)

### 6.1 Protein, DNA and RNA chains [i](#)

In the following table, the column labelled ‘#RSRZ > 2’ contains the number (and percentage) of RSRZ outliers, followed by percent RSRZ outliers for the chain as percentile scores relative to all X-ray entries and entries of similar resolution. The OWAB column contains the minimum, median, 95<sup>th</sup> percentile and maximum values of the occupancy-weighted average B-factor per residue. The column labelled ‘Q < 0.9’ lists the number of (and percentage) of residues with an average occupancy less than 0.9.

Mol	Chain	Analysed	<RSRZ>	#RSRZ>2	OWAB(Å <sup>2</sup> )	Q<0.9
1	A	244/330 (73%)	0.44	16 (6%) 18 16	43, 70, 143, 197	0
2	B	131/168 (77%)	0.92	22 (16%) 1 1	48, 67, 198, 210	0
All	All	375/498 (75%)	0.61	38 (10%) 7 6	43, 69, 175, 210	0

All (38) RSRZ outliers are listed below:

Mol	Chain	Res	Type	RSRZ
2	B	620	THR	9.1
2	B	522	ASP	7.3
1	A	308	PHE	7.0
1	A	293	THR	6.9
2	B	615	TRP	6.7
2	B	619	ILE	6.5
2	B	625	GLN	5.7
2	B	629	ASP	5.4
2	B	623	ILE	5.2
2	B	616	THR	5.2
1	A	309	THR	4.9
2	B	613	ALA	4.8
2	B	621	ASP	4.7
2	B	626	ILE	4.6
1	A	307	SER	4.5
1	A	211	SER	4.0
2	B	628	HIS	3.9
1	A	310	VAL	3.8
1	A	229	GLU	3.8
1	A	306	LEU	3.8
2	B	617	LYS	3.5
2	B	627	ILE	3.5
2	B	631	VAL	3.3
2	B	632	ASP	3.0

*Continued on next page...*

*Continued from previous page...*

Mol	Chain	Res	Type	RSRZ
1	A	278	ASN	3.0
1	A	262	THR	3.0
1	A	280	GLU	2.8
1	A	48[A]	VAL	2.8
2	B	527	ILE	2.8
1	A	214	TYR	2.7
2	B	614	ASP	2.7
1	A	281	ILE	2.7
2	B	589	ALA	2.6
2	B	525	ALA	2.5
2	B	624	ASP	2.3
1	A	47[A]	ASP	2.1
2	B	529	LEU	2.1
1	A	51[A]	LEU	2.0

## 6.2 Non-standard residues in protein, DNA, RNA chains [i](#)

There are no non-standard protein/DNA/RNA residues in this entry.

## 6.3 Carbohydrates [i](#)

There are no carbohydrates in this entry.

## 6.4 Ligands [i](#)

In the following table, the Atoms column lists the number of modelled atoms in the group and the number defined in the chemical component dictionary. The B-factors column lists the minimum, median, 95<sup>th</sup> percentile and maximum values of B factors of atoms in the group. The column labelled 'Q<0.9' lists the number of atoms with occupancy less than 0.9.

Mol	Type	Chain	Res	Atoms	RSCC	RSR	B-factors(Å <sup>2</sup> )	Q<0.9
3	NAG	A	502	14/15	0.59	0.58	137,162,167,167	0
8	MAN	B	704	11/12	0.73	0.50	164,169,174,174	0
5	GOL	A	506	6/6	0.77	0.33	95,110,113,118	0
5	GOL	B	706	6/6	0.78	0.34	98,107,110,112	0
5	GOL	A	507	6/6	0.80	0.19	92,101,105,113	0
7	BMA	B	703	11/12	0.80	0.35	129,134,148,158	0
3	NAG	A	504	14/15	0.81	0.63	128,142,149,153	0
3	NAG	A	503	14/15	0.86	0.17	117,122,136,139	0
5	GOL	A	508	6/6	0.86	0.17	99,102,106,107	0

*Continued on next page...*

*Continued from previous page...*

Mol	Type	Chain	Res	Atoms	RSCC	RSR	B-factors( $\text{\AA}^2$ )	Q<0.9
3	NAG	B	702	14/15	0.88	0.28	98,107,119,125	0
5	GOL	B	705	6/6	0.91	0.34	78,88,92,99	0
6	8PR	A	509	24/24	0.92	0.18	66,85,96,98	0
4	DMS	A	505	4/4	0.92	0.15	94,94,102,106	0
3	NAG	A	501	14/15	0.94	0.17	66,82,90,91	0
3	NAG	B	701	14/15	0.97	0.12	49,64,75,79	0

## 6.5 Other polymers [i](#)

There are no such residues in this entry.