



# Full wwPDB X-ray Structure Validation Report ⓘ

Mar 9, 2018 – 10:52 pm GMT

PDB ID : 5F8I  
Title : Enterovirus 71 Polymerase Elongation Complex (C1S2/3 Form)  
Authors : Shu, B.; Gong, P.  
Deposited on : 2015-12-09  
Resolution : 2.50 Å(reported)

This is a Full wwPDB X-ray Structure Validation Report for a publicly released PDB entry.

We welcome your comments at [validation@mail.wwpdb.org](mailto:validation@mail.wwpdb.org)

A user guide is available at

<https://www.wwpdb.org/validation/2017/XrayValidationReportHelp>

with specific help available everywhere you see the ⓘ symbol.

---

The following versions of software and data (see [references ⓘ](#)) were used in the production of this report:

MolProbity : 4.02b-467  
Mogul : 1.7.3 (157068), CSD as539be (2018)  
Xtriage (Phenix) : 1.13  
EDS : trunk30967  
Percentile statistics : 20171227.v01 (using entries in the PDB archive December 27th 2017)  
Refmac : 5.8.0158  
CCP4 : 7.0 (Gargrove)  
Ideal geometry (proteins) : Engh & Huber (2001)  
Ideal geometry (DNA, RNA) : Parkinson et al. (1996)  
Validation Pipeline (wwPDB-VP) : trunk30967

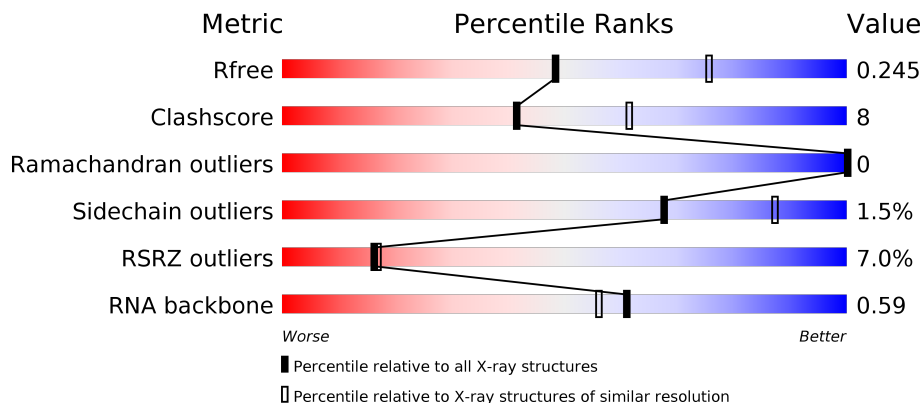
# 1 Overall quality at a glance

The following experimental techniques were used to determine the structure:

*X-RAY DIFFRACTION*

The reported resolution of this entry is 2.50 Å.

Percentile scores (ranging between 0-100) for global validation metrics of the entry are shown in the following graphic. The table shows the number of entries on which the scores are based.



Metric	Whole archive (#Entries)	Similar resolution (#Entries, resolution range(Å))
$R_{free}$	111664	4155 (2.50-2.50)
Clashscore	122126	4827 (2.50-2.50)
Ramachandran outliers	120053	4735 (2.50-2.50)
Sidechain outliers	120020	4737 (2.50-2.50)
RSRZ outliers	108989	4058 (2.50-2.50)
RNA backbone	2636	1092 (2.90-2.10)

The table below summarises the geometric issues observed across the polymeric chains and their fit to the electron density. The red, orange, yellow and green segments on the lower bar indicate the fraction of residues that contain outliers for  $\geq 3$ , 2, 1 and 0 types of geometric quality criteria. A grey segment represents the fraction of residues that are not modelled. The numeric value for each fraction is indicated below the corresponding segment, with a dot representing fractions  $\leq 5\%$ . The upper red bar (where present) indicates the fraction of residues that have poor fit to the electron density. The numeric value is given above the bar.

Mol	Chain	Length	Quality of chain
1	A	468	
2	B	35	
3	C	16	

The following table lists non-polymeric compounds, carbohydrate monomers and non-standard

residues in protein, DNA, RNA chains that are outliers for geometric or electron-density-fit criteria:

Mol	Type	Chain	Res	Chirality	Geometry	Clashes	Electron density
4	CTP	A	1001	-	-	-	X

## 2 Entry composition

There are 9 unique types of molecules in this entry. The entry contains 4339 atoms, of which 0 are hydrogens and 0 are deuteriums.

In the tables below, the ZeroOcc column contains the number of atoms modelled with zero occupancy, the AltConf column contains the number of residues with at least one atom in alternate conformation and the Trace column contains the number of residues modelled with at most 2 atoms.

- Molecule 1 is a protein called Genome polyprotein.

Mol	Chain	Residues	Atoms					ZeroOcc	AltConf	Trace
			Total	C	N	O	S			
1	A	462	3681	2354	611	698	18	0	0	0

There are 6 discrepancies between the modelled and reference sequences:

Chain	Residue	Modelled	Actual	Comment	Reference
A	463	HIS	-	expression tag	UNP E5RPG2
A	464	HIS	-	expression tag	UNP E5RPG2
A	465	HIS	-	expression tag	UNP E5RPG2
A	466	HIS	-	expression tag	UNP E5RPG2
A	467	HIS	-	expression tag	UNP E5RPG2
A	468	HIS	-	expression tag	UNP E5RPG2

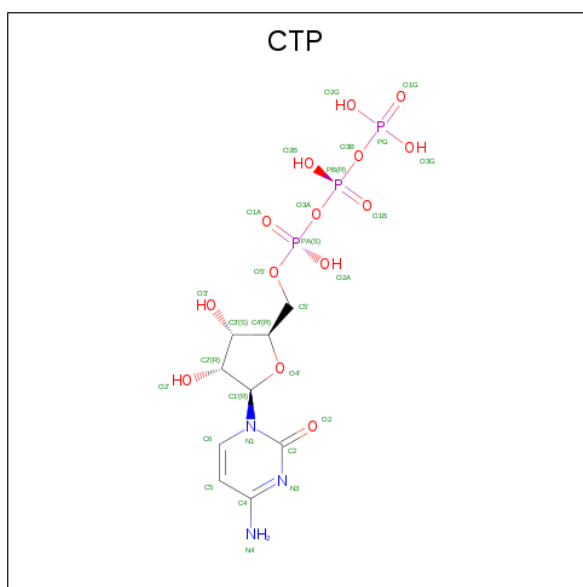
- Molecule 2 is a RNA chain called RNA (35-MER).

Mol	Chain	Residues	Atoms					ZeroOcc	AltConf	Trace
			Total	C	N	O	P			
2	B	12	249	111	37	89	12	0	0	0

- Molecule 3 is a RNA chain called RNA (5'-R(\*UP\*GP\*UP\*UP\*CP\*GP\*AP\*CP\*GP\*AP\*GP\*AP\*GP\*AP\*GP\*A)-3').

Mol	Chain	Residues	Atoms					ZeroOcc	AltConf	Trace
			Total	C	N	O	P			
3	C	10	222	99	48	65	10	0	0	0

- Molecule 4 is CYTIDINE-5'-TRIPHOSPHATE (three-letter code: CTP) (formula:  $C_9H_{16}N_3O_{14}P_3$ ).

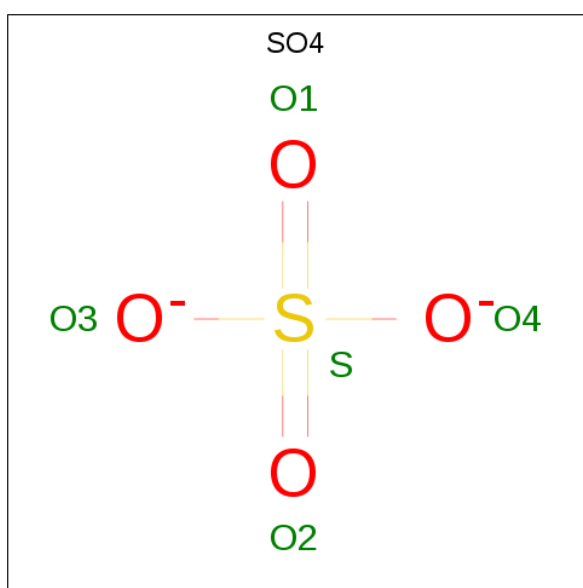


Mol	Chain	Residues	Atoms					ZeroOcc	AltConf
			Total	C	N	O	P		
4	A	1	29	9	3	14	3	0	0

- Molecule 5 is ZINC ION (three-letter code: ZN) (formula: Zn).

Mol	Chain	Residues	Atoms		ZeroOcc	AltConf
			Total	Zn		
5	A	1	1	1	0	0

- Molecule 6 is SULFATE ION (three-letter code: SO4) (formula: O<sub>4</sub>S).

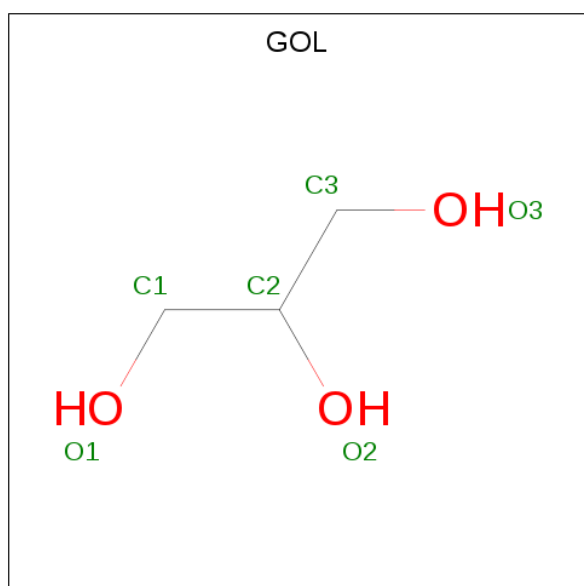


Mol	Chain	Residues	Atoms	ZeroOcc	AltConf
6	A	1	Total O S 5 4 1	0	0

- Molecule 7 is MAGNESIUM ION (three-letter code: MG) (formula: Mg).

Mol	Chain	Residues	Atoms	ZeroOcc	AltConf
7	A	2	Total Mg 2 2	0	0

- Molecule 8 is GLYCEROL (three-letter code: GOL) (formula: C<sub>3</sub>H<sub>8</sub>O<sub>3</sub>).



Mol	Chain	Residues	Atoms	ZeroOcc	AltConf
8	B	1	Total C O 6 3 3	0	0

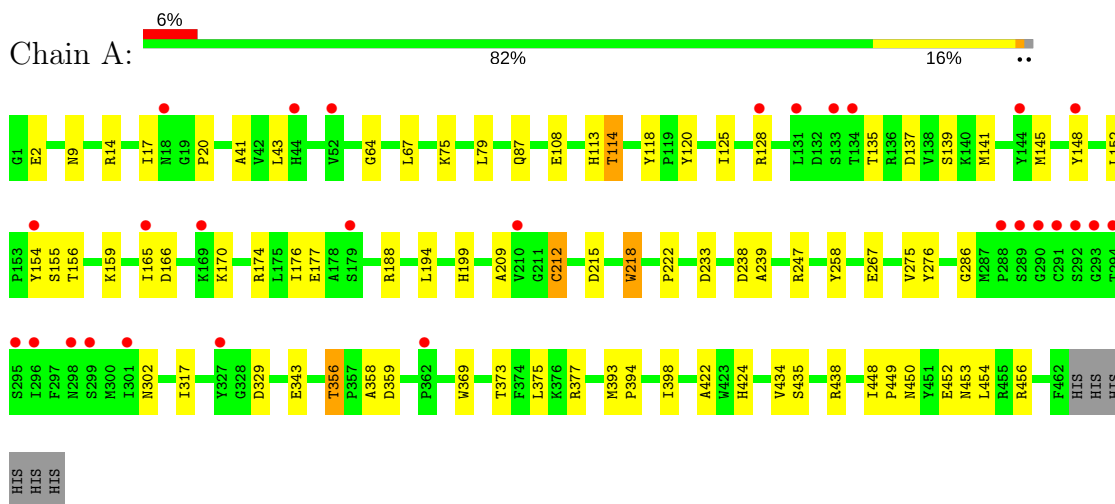
- Molecule 9 is water.

Mol	Chain	Residues	Atoms	ZeroOcc	AltConf
9	A	119	Total O 119 119	0	0
9	B	16	Total O 16 16	0	0
9	C	9	Total O 9 9	0	0

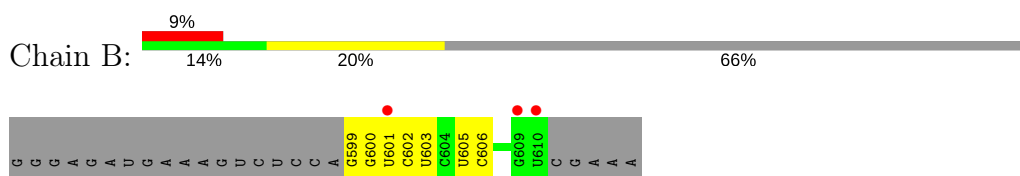
### 3 Residue-property plots [i](#)

These plots are drawn for all protein, RNA and DNA chains in the entry. The first graphic for a chain summarises the proportions of the various outlier classes displayed in the second graphic. The second graphic shows the sequence view annotated by issues in geometry and electron density. Residues are color-coded according to the number of geometric quality criteria for which they contain at least one outlier: green = 0, yellow = 1, orange = 2 and red = 3 or more. A red dot above a residue indicates a poor fit to the electron density ( $RSRZ > 2$ ). Stretches of 2 or more consecutive residues without any outlier are shown as a green connector. Residues present in the sample, but not in the model, are shown in grey.

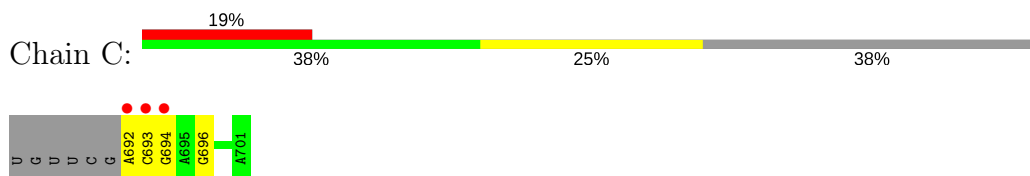
- Molecule 1: Genome polyprotein



- Molecule 2: RNA (35-MER)



- Molecule 3: RNA (5'-R(\*UP\*GP\*UP\*UP\*CP\*GP\*AP\*CP\*GP\*AP\*GP\*AP\*GP\*AP\*GP\*A)-3')



## 4 Data and refinement statistics

Property	Value	Source
Space group	P 21 21 21	Depositor
Cell constants a, b, c, $\alpha$ , $\beta$ , $\gamma$	63.67Å 77.31Å 149.66Å 90.00° 90.00° 90.00°	Depositor
Resolution (Å)	32.27 – 2.50 32.27 – 2.50	Depositor EDS
% Data completeness (in resolution range)	99.5 (32.27-2.50) 99.5 (32.27-2.50)	Depositor EDS
$R_{merge}$	0.06	Depositor
$R_{sym}$	(Not available)	Depositor
$\langle I/\sigma(I) \rangle$ <sup>1</sup>	2.82 (at 2.51Å)	Xtrriage
Refinement program	PHENIX phenix.refine: 1.9_1692	Depositor
R, $R_{free}$	0.199 , 0.244 0.201 , 0.245	Depositor DCC
$R_{free}$ test set	1328 reflections (5.10%)	wwPDB-VP
Wilson B-factor (Å <sup>2</sup> )	54.0	Xtrriage
Anisotropy	0.539	Xtrriage
Bulk solvent $k_{sol}$ (e/Å <sup>3</sup> ), $B_{sol}$ (Å <sup>2</sup> )	0.36 , 47.3	EDS
L-test for twinning <sup>2</sup>	$\langle  L  \rangle = 0.44$ , $\langle L^2 \rangle = 0.26$	Xtrriage
Estimated twinning fraction	No twinning to report.	Xtrriage
$F_o, F_c$ correlation	0.94	EDS
Total number of atoms	4339	wwPDB-VP
Average B, all atoms (Å <sup>2</sup> )	59.0	wwPDB-VP

Xtrriage's analysis on translational NCS is as follows: *The largest off-origin peak in the Patterson function is 4.45% of the height of the origin peak. No significant pseudotranslation is detected.*

<sup>1</sup>Intensities estimated from amplitudes.

<sup>2</sup>Theoretical values of  $\langle |L| \rangle$ ,  $\langle L^2 \rangle$  for acentric reflections are 0.5, 0.333 respectively for untwinned datasets, and 0.375, 0.2 for perfectly twinned datasets.



## 5 Model quality [i](#)

### 5.1 Standard geometry [i](#)

Bond lengths and bond angles in the following residue types are not validated in this section: GOL, MG, CTP, ZN, SO4

The Z score for a bond length (or angle) is the number of standard deviations the observed value is removed from the expected value. A bond length (or angle) with  $|Z| > 5$  is considered an outlier worth inspection. RMSZ is the root-mean-square of all Z scores of the bond lengths (or angles).

Mol	Chain	Bond lengths		Bond angles	
		RMSZ	# Z  >5	RMSZ	# Z  >5
1	A	0.44	0/3775	0.58	1/5124 (0.0%)
2	B	0.68	0/275	0.92	0/425
3	C	0.70	0/250	1.12	0/389
All	All	0.48	0/4300	0.66	1/5938 (0.0%)

There are no bond length outliers.

All (1) bond angle outliers are listed below:

Mol	Chain	Res	Type	Atoms	Z	Observed(°)	Ideal(°)
1	A	174	ARG	NE-CZ-NH1	-5.03	117.78	120.30

There are no chirality outliers.

There are no planarity outliers.

### 5.2 Too-close contacts [i](#)

In the following table, the Non-H and H(model) columns list the number of non-hydrogen atoms and hydrogen atoms in the chain respectively. The H(added) column lists the number of hydrogen atoms added and optimized by MolProbity. The Clashes column lists the number of clashes within the asymmetric unit, whereas Symm-Clashes lists symmetry related clashes.

Mol	Chain	Non-H	H(model)	H(added)	Clashes	Symm-Clashes
1	A	3681	0	3583	54	1
2	B	249	0	128	8	0
3	C	222	0	111	3	0
4	A	29	0	12	4	0
5	A	1	0	0	0	1
6	A	5	0	0	0	0
7	A	2	0	0	0	0

*Continued on next page...*

Continued from previous page...

Mol	Chain	Non-H	H(model)	H(added)	Clashes	Symm-Clashes
8	B	6	0	8	0	0
9	A	119	0	0	4	0
9	B	16	0	0	1	0
9	C	9	0	0	0	0
All	All	4339	0	3842	60	1

The all-atom clashscore is defined as the number of clashes found per 1000 atoms (including hydrogen atoms). The all-atom clashscore for this structure is 8.

All (60) close contacts within the same asymmetric unit are listed below, sorted by their clash magnitude.

Atom-1	Atom-2	Interatomic distance (Å)	Clash overlap (Å)
1:A:233:ASP:HB2	1:A:356:THR:HG23	1.58	0.85
1:A:453:ASN:OD1	1:A:456:ARG:NH2	2.22	0.72
1:A:233:ASP:N	9:A:1101:HOH:O	2.22	0.72
1:A:108:GLU:O	1:A:188:ARG:NH2	2.24	0.69
1:A:238:ASP:OD1	1:A:239:ALA:N	2.25	0.69
1:A:114:THR:HG21	2:B:601:U:OP2	1.93	0.68
1:A:356:THR:O	9:A:1101:HOH:O	2.12	0.68
1:A:17:ILE:HG21	1:A:155:SER:HB3	1.78	0.64
1:A:159:LYS:NZ	2:B:600:G:O6	2.27	0.64
1:A:176:ILE:HD13	2:B:600:G:C8	2.35	0.62
2:B:602:C:H2'	2:B:603:U:C6	2.40	0.57
1:A:329:ASP:OD1	4:A:1001:CTP:H5'2	2.04	0.56
1:A:114:THR:HG21	2:B:601:U:P	2.46	0.56
1:A:177:GLU:OE1	9:A:1102:HOH:O	2.18	0.55
1:A:247:ARG:NH2	1:A:267:GLU:OE2	2.37	0.55
1:A:238:ASP:HB3	4:A:1001:CTP:O2'	2.07	0.55
1:A:20:PRO:HG2	2:B:599:G:C4	2.42	0.54
1:A:141:MET:O	1:A:145:MET:HG2	2.09	0.53
3:C:692:A:H2'	3:C:693:C:C6	2.45	0.51
1:A:113:HIS:NE2	3:C:696:G:OP2	2.44	0.51
1:A:449:PRO:HB2	1:A:454:LEU:HD11	1.91	0.51
1:A:120:TYR:HB3	1:A:125:ILE:HB	1.93	0.51
2:B:602:C:H2'	2:B:603:U:H6	1.74	0.50
2:B:605:U:H2'	2:B:606:C:C6	2.47	0.50
1:A:17:ILE:HD11	1:A:118:TYR:HD2	1.77	0.49
1:A:128:ARG:HH11	1:A:128:ARG:HG2	1.78	0.49
1:A:209:ALA:O	1:A:212:CYS:HB3	2.13	0.49
1:A:166:ASP:OD2	1:A:170:LYS:NZ	2.34	0.49
1:A:238:ASP:O	1:A:286:GLY:HA2	2.13	0.48

Continued on next page...

Continued from previous page...

Atom-1	Atom-2	Interatomic distance (Å)	Clash overlap (Å)
1:A:238:ASP:HB3	4:A:1001:CTP:O3'	2.14	0.47
1:A:87:GLN:N	9:A:1106:HOH:O	2.36	0.46
1:A:194:LEU:HB2	1:A:258:TYR:OH	2.15	0.46
1:A:154:TYR:HB3	1:A:177:GLU:HB3	1.98	0.46
1:A:2:GLU:HB2	1:A:64:GLY:HA2	1.97	0.45
1:A:75:LYS:O	1:A:79:LEU:HD13	2.17	0.45
1:A:9:ASN:HB3	1:A:14:ARG:O	2.17	0.44
1:A:165:ILE:HA	1:A:165:ILE:HD13	1.73	0.44
1:A:218:TRP:HH2	1:A:375:LEU:HD12	1.84	0.43
1:A:215:ASP:OD1	1:A:424:HIS:NE2	2.51	0.42
1:A:302:ASN:ND2	1:A:329:ASP:HA	2.35	0.42
1:A:222:PRO:HA	1:A:369:TRP:CZ2	2.55	0.42
1:A:450:ASN:HB3	1:A:453:ASN:ND2	2.34	0.42
4:A:1001:CTP:H6	4:A:1001:CTP:O5'	2.03	0.42
1:A:373:THR:HA	1:A:377:ARG:O	2.20	0.42
1:A:358:ALA:O	1:A:359:ASP:HB2	2.20	0.42
1:A:67:LEU:HA	1:A:67:LEU:HD12	1.84	0.42
3:C:692:A:H2'	3:C:693:C:H6	1.82	0.42
1:A:398:ILE:HD13	1:A:422:ALA:HB2	2.02	0.41
1:A:135:THR:HB	1:A:137:ASP:H	1.85	0.41
1:A:148:TYR:O	1:A:152:LEU:HD21	2.20	0.41
1:A:434:VAL:O	1:A:438:ARG:HG2	2.20	0.41
1:A:199:HIS:HB3	9:B:813:HOH:O	2.20	0.41
1:A:41:ALA:O	1:A:43:LEU:HD13	2.20	0.41
1:A:393:MET:HA	1:A:394:PRO:HD3	1.95	0.41
1:A:317:ILE:HD13	1:A:317:ILE:HA	1.89	0.41
1:A:448:ILE:HA	1:A:449:PRO:HD3	1.93	0.40
1:A:128:ARG:NH1	1:A:128:ARG:HG2	2.36	0.40
1:A:156:THR:HB	1:A:276:TYR:HB2	2.03	0.40
1:A:137:ASP:OD1	1:A:139:SER:HB3	2.22	0.40
1:A:17:ILE:HD12	1:A:275:VAL:HB	2.04	0.40

All (1) symmetry-related close contacts are listed below. The label for Atom-2 includes the symmetry operator and encoded unit-cell translations to be applied.

Atom-1	Atom-2	Interatomic distance (Å)	Clash overlap (Å)
1:A:343:GLU:OE1	5:A:1002:ZN:ZN[4_445]	1.69	0.51

## 5.3 Torsion angles [i](#)

### 5.3.1 Protein backbone [i](#)

In the following table, the Percentiles column shows the percent Ramachandran outliers of the chain as a percentile score with respect to all X-ray entries followed by that with respect to entries of similar resolution.

The Analysed column shows the number of residues for which the backbone conformation was analysed, and the total number of residues.

Mol	Chain	Analysed	Favoured	Allowed	Outliers	Percentiles
1	A	460/468 (98%)	446 (97%)	14 (3%)	0	100 100

There are no Ramachandran outliers to report.

### 5.3.2 Protein sidechains [i](#)

In the following table, the Percentiles column shows the percent sidechain outliers of the chain as a percentile score with respect to all X-ray entries followed by that with respect to entries of similar resolution.

The Analysed column shows the number of residues for which the sidechain conformation was analysed, and the total number of residues.

Mol	Chain	Analysed	Rotameric	Outliers	Percentiles
1	A	402/412 (98%)	396 (98%)	6 (2%)	67 87

All (6) residues with a non-rotameric sidechain are listed below:

Mol	Chain	Res	Type
1	A	114	THR
1	A	212	CYS
1	A	218	TRP
1	A	356	THR
1	A	435	SER
1	A	452	GLU

Some sidechains can be flipped to improve hydrogen bonding and reduce clashes. There are no such sidechains identified.

### 5.3.3 RNA [i](#)

Mol	Chain	Analysed	Backbone Outliers	Pucker Outliers
2	B	11/35 (31%)	0	0
3	C	9/16 (56%)	1 (11%)	0
All	All	20/51 (39%)	1 (5%)	0

All (1) RNA backbone outliers are listed below:

Mol	Chain	Res	Type
3	C	694	G

There are no RNA pucker outliers to report.

## 5.4 Non-standard residues in protein, DNA, RNA chains [i](#)

There are no non-standard protein/DNA/RNA residues in this entry.

## 5.5 Carbohydrates [i](#)

There are no carbohydrates in this entry.

## 5.6 Ligand geometry [i](#)

Of 6 ligands modelled in this entry, 3 are monoatomic - leaving 3 for Mogul analysis.

In the following table, the Counts columns list the number of bonds (or angles) for which Mogul statistics could be retrieved, the number of bonds (or angles) that are observed in the model and the number of bonds (or angles) that are defined in the Chemical Component Dictionary. The Link column lists molecule types, if any, to which the group is linked. The Z score for a bond length (or angle) is the number of standard deviations the observed value is removed from the expected value. A bond length (or angle) with  $|Z| > 2$  is considered an outlier worth inspection. RMSZ is the root-mean-square of all Z scores of the bond lengths (or angles).

Mol	Type	Chain	Res	Link	Bond lengths			Bond angles		
					Counts	RMSZ	# Z  > 2	Counts	RMSZ	# Z  > 2
4	CTP	A	1001	7	23,30,30	0.87	1 (4%)	26,47,47	0.94	1 (3%)
6	SO4	A	1003	-	4,4,4	0.25	0	6,6,6	0.37	0
8	GOL	B	701	-	5,5,5	0.45	0	5,5,5	0.32	0

In the following table, the Chirals column lists the number of chiral outliers, the number of chiral centers analysed, the number of these observed in the model and the number defined in the Chemical Component Dictionary. Similar counts are reported in the Torsion and Rings columns. '2' means no outliers of that kind were identified.

Mol	Type	Chain	Res	Link	Chirals	Torsions	Rings
4	CTP	A	1001	7	-	0/18/38/38	0/2/2/2
6	SO4	A	1003	-	-	0/0/0/0	0/0/0/0
8	GOL	B	701	-	-	0/4/4/4	0/0/0/0

All (1) bond length outliers are listed below:

Mol	Chain	Res	Type	Atoms	Z	Observed(Å)	Ideal(Å)
4	A	1001	CTP	PG-O3B	2.76	1.64	1.60

All (1) bond angle outliers are listed below:

Mol	Chain	Res	Type	Atoms	Z	Observed(°)	Ideal(°)
4	A	1001	CTP	N4-C4-N3	2.09	119.97	116.56

There are no chirality outliers.

There are no torsion outliers.

There are no ring outliers.

1 monomer is involved in 4 short contacts:

Mol	Chain	Res	Type	Clashes	Symm-Clashes
4	A	1001	CTP	4	0

## 5.7 Other polymers [i](#)

There are no such residues in this entry.

## 5.8 Polymer linkage issues [i](#)

There are no chain breaks in this entry.

## 6 Fit of model and data

### 6.1 Protein, DNA and RNA chains

In the following table, the column labelled ‘#RSRZ > 2’ contains the number (and percentage) of RSRZ outliers, followed by percent RSRZ outliers for the chain as percentile scores relative to all X-ray entries and entries of similar resolution. The OWAB column contains the minimum, median, 95<sup>th</sup> percentile and maximum values of the occupancy-weighted average B-factor per residue. The column labelled ‘Q < 0.9’ lists the number of (and percentage) of residues with an average occupancy less than 0.9.

Mol	Chain	Analysed	<RSRZ>	#RSRZ>2	OWAB(Å <sup>2</sup> )	Q<0.9
1	A	462/468 (98%)	0.23	28 (6%) 21 22	41, 55, 77, 90	0
2	B	12/35 (34%)	1.06	3 (25%) 0 0	48, 57, 101, 106	0
3	C	10/16 (62%)	1.33	3 (30%) 0 0	53, 65, 107, 109	0
All	All	484/519 (93%)	0.27	34 (7%) 16 17	41, 55, 80, 109	0

All (34) RSRZ outliers are listed below:

Mol	Chain	Res	Type	RSRZ
2	B	610	U	5.3
3	C	692	A	4.9
1	A	131	LEU	4.7
1	A	362	PRO	4.5
3	C	693	C	4.4
1	A	291	CYS	4.3
1	A	294	THR	4.0
1	A	290	GLY	3.8
1	A	295	SER	3.8
2	B	609	G	3.7
1	A	144	TYR	3.7
3	C	694	G	3.6
1	A	134	THR	3.5
1	A	289	SER	3.4
1	A	292	SER	3.3
1	A	288	PRO	3.0
1	A	165	ILE	2.8
1	A	44	HIS	2.7
1	A	296	ILE	2.6
1	A	298	ASN	2.5
1	A	293	GLY	2.5
1	A	301	ILE	2.5
2	B	601	U	2.5

*Continued on next page...*

*Continued from previous page...*

Mol	Chain	Res	Type	RSRZ
1	A	299	SER	2.5
1	A	133	SER	2.4
1	A	148	TYR	2.4
1	A	154	TYR	2.4
1	A	52	VAL	2.3
1	A	179	SER	2.3
1	A	18	ASN	2.2
1	A	169	LYS	2.2
1	A	210	VAL	2.1
1	A	128	ARG	2.1
1	A	327	TYR	2.0

## 6.2 Non-standard residues in protein, DNA, RNA chains [i](#)

There are no non-standard protein/DNA/RNA residues in this entry.

## 6.3 Carbohydrates [i](#)

There are no carbohydrates in this entry.

## 6.4 Ligands [i](#)

In the following table, the Atoms column lists the number of modelled atoms in the group and the number defined in the chemical component dictionary. The B-factors column lists the minimum, median, 95<sup>th</sup> percentile and maximum values of B factors of atoms in the group. The column labelled 'Q<0.9' lists the number of atoms with occupancy less than 0.9.

Mol	Type	Chain	Res	Atoms	RSCC	RSR	B-factors(Å <sup>2</sup> )	Q<0.9
4	CTP	A	1001	29/29	0.71	0.43	42,50,58,70	29
7	MG	A	1004	1/1	0.73	0.19	51,51,51,51	1
7	MG	A	1005	1/1	0.89	0.14	47,47,47,47	1
8	GOL	B	701	6/6	0.96	0.33	50,66,68,71	0
5	ZN	A	1002	1/1	0.99	0.14	60,60,60,60	1
6	SO4	A	1003	5/5	0.99	0.19	45,45,45,45	5

## 6.5 Other polymers [i](#)

There are no such residues in this entry.