



# wwPDB X-ray Structure Validation Summary Report ⓘ

Aug 19, 2023 – 09:40 PM EDT

PDB ID : 2F93  
Title : K Intermediate Structure of Sensory Rhodopsin II/Transducer Complex in Combination with the Ground State Structure  
Authors : Moukhametzianov, R.I.; Klare, J.P.; Efremov, R.G.; Baecken, C.; Goepner, A.; Labahn, J.; Engelhard, M.; Bueldt, G.; Gordeliy, V.I.  
Deposited on : 2005-12-05  
Resolution : 2.00 Å(reported)

This is a wwPDB X-ray Structure Validation Summary Report for a publicly released PDB entry.

We welcome your comments at [validation@mail.wwpdb.org](mailto:validation@mail.wwpdb.org)

A user guide is available at

<https://www.wwpdb.org/validation/2017/XrayValidationReportHelp>

with specific help available everywhere you see the ⓘ symbol.

The types of validation reports are described at

<http://www.wwpdb.org/validation/2017/FAQs#types>.

---

The following versions of software and data (see [references ⓘ](#)) were used in the production of this report:

MolProbity : 4.02b-467  
Mogul : 1.8.5 (274361), CSD as541be (2020)  
Xtrriage (Phenix) : **NOT EXECUTED**  
EDS : **NOT EXECUTED**  
buster-report : 1.1.7 (2018)  
Percentile statistics : 20191225.v01 (using entries in the PDB archive December 25th 2019)  
Ideal geometry (proteins) : Engh & Huber (2001)  
Ideal geometry (DNA, RNA) : Parkinson et al. (1996)  
Validation Pipeline (wwPDB-VP) : 2.35

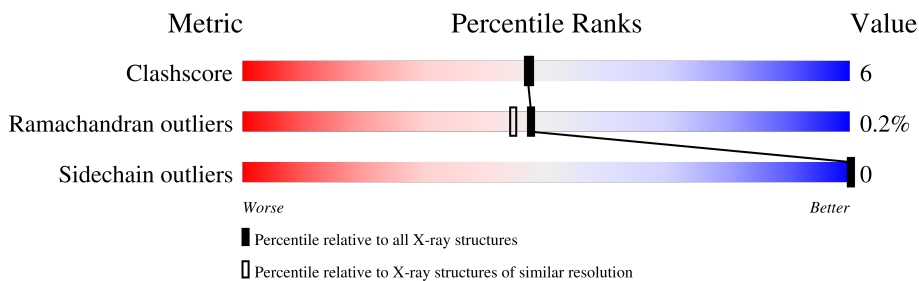
# 1 Overall quality at a glance

The following experimental techniques were used to determine the structure:

*X-RAY DIFFRACTION*

The reported resolution of this entry is 2.00 Å.

Percentile scores (ranging between 0-100) for global validation metrics of the entry are shown in the following graphic. The table shows the number of entries on which the scores are based.



Metric	Whole archive (#Entries)	Similar resolution (#Entries, resolution range(Å))
Clashscore	141614	9178 (2.00-2.00)
Ramachandran outliers	138981	9054 (2.00-2.00)
Sidechain outliers	138945	9053 (2.00-2.00)

The table below summarises the geometric issues observed across the polymeric chains and their fit to the electron density. The red, orange, yellow and green segments of the lower bar indicate the fraction of residues that contain outliers for  $\geq 3$ , 2, 1 and 0 types of geometric quality criteria respectively. A grey segment represents the fraction of residues that are not modelled. The numeric value for each fraction is indicated below the corresponding segment, with a dot representing fractions  $\leq 5\%$ .

Note EDS was not executed.

Mol	Chain	Length	Quality of chain
1	1-A	248	
1	2-A	248	
2	1-B	122	
2	2-B	122	

## 2 Entry composition [i](#)

There are 5 unique types of molecules in this entry. The entry contains 4150 atoms, of which 0 are hydrogens and 0 are deuteriums.

In the tables below, the ZeroOcc column contains the number of atoms modelled with zero occupancy, the AltConf column contains the number of residues with at least one atom in alternate conformation and the Trace column contains the number of residues modelled with at most 2 atoms.

- Molecule 1 is a protein called Sensory rhodopsin II.

Mol	Chain	Residues	Atoms					ZeroOcc	AltConf	Trace
			Total	C	N	O	S			
1	1-A	220	Total 1664	C 1113	N 264	O 281	S 6	0	220	0
1	2-A	220	Total 1664	C 1113	N 264	O 281	S 6	0	220	0

There are 10 discrepancies between the modelled and reference sequences:

Chain	Residue	Modelled	Actual	Comment	Reference
A	240	GLU	-	cloning artifact	UNP P42196
A	241	ASN	-	cloning artifact	UNP P42196
A	242	SER	-	cloning artifact	UNP P42196
A	243	HIS	-	expression tag	UNP P42196
A	244	HIS	-	expression tag	UNP P42196
A	245	HIS	-	expression tag	UNP P42196
A	246	HIS	-	expression tag	UNP P42196
A	247	HIS	-	expression tag	UNP P42196
A	248	HIS	-	expression tag	UNP P42196
A	249	HIS	-	expression tag	UNP P42196

- Molecule 2 is a protein called Sensory rhodopsin II transducer.

Mol	Chain	Residues	Atoms				ZeroOcc	AltConf	Trace
			Total	C	N	O			
2	1-B	51	Total 337	C 220	N 53	O 64	0	51	0
2	2-B	51	Total 337	C 220	N 53	O 64	0	51	0

There are 10 discrepancies between the modelled and reference sequences:

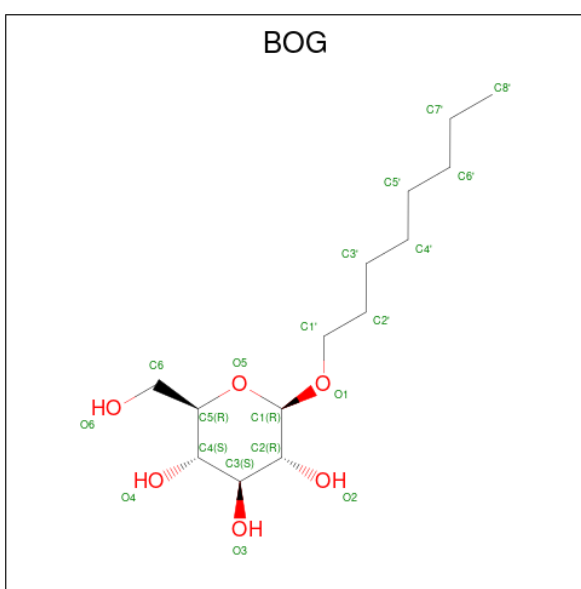
Chain	Residue	Modelled	Actual	Comment	Reference
B	2	ALA	-	cloning artifact	UNP P42259
B	115	ASN	-	cloning artifact	UNP P42259

*Continued on next page...*

Continued from previous page...

Chain	Residue	Modelled	Actual	Comment	Reference
B	116	SER	-	cloning artifact	UNP P42259
B	117	HIS	-	expression tag	UNP P42259
B	118	HIS	-	expression tag	UNP P42259
B	119	HIS	-	expression tag	UNP P42259
B	120	HIS	-	expression tag	UNP P42259
B	121	HIS	-	expression tag	UNP P42259
B	122	HIS	-	expression tag	UNP P42259
B	123	HIS	-	expression tag	UNP P42259

- Molecule 3 is octyl beta-D-glucopyranoside (three-letter code: BOG) (formula: C<sub>14</sub>H<sub>28</sub>O<sub>6</sub>).



Mol	Chain	Residues	Atoms			ZeroOcc	AltConf
3	1-A	1	Total	C	O	0	1
			20	14	6		
3	2-A	1	Total	C	O	0	1
			20	14	6		

- Molecule 4 is RETINAL (three-letter code: RET) (formula: C<sub>20</sub>H<sub>28</sub>O).



Mol	Chain	Residues	Atoms	ZeroOcc	AltConf
4	1-A	1	Total C 20 20	0	1
4	2-A	1	Total C 20 20	0	1

- Molecule 5 is water.

Mol	Chain	Residues	Atoms	ZeroOcc	AltConf
5	1-A	34	Total O 34 34	0	34
5	2-A	31	Total O 31 31	0	31
5	1-B	1	Total O 1 1	0	1
5	2-B	2	Total O 2 2	0	2

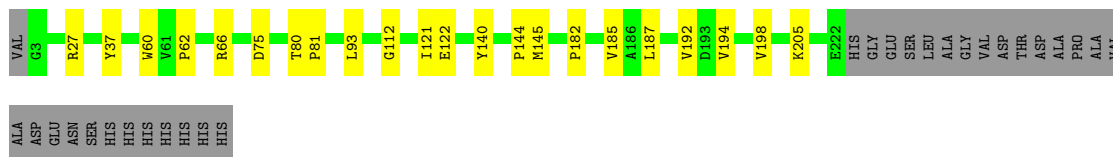
### 3 Residue-property plots i

These plots are drawn for all protein, RNA, DNA and oligosaccharide chains in the entry. The first graphic for a chain summarises the proportions of the various outlier classes displayed in the second graphic. The second graphic shows the sequence view annotated by issues in geometry. Residues are color-coded according to the number of geometric quality criteria for which they contain at least one outlier: green = 0, yellow = 1, orange = 2 and red = 3 or more. Stretches of 2 or more consecutive residues without any outlier are shown as a green connector. Residues present in the sample, but not in the model, are shown in grey.

Note EDS was not executed.

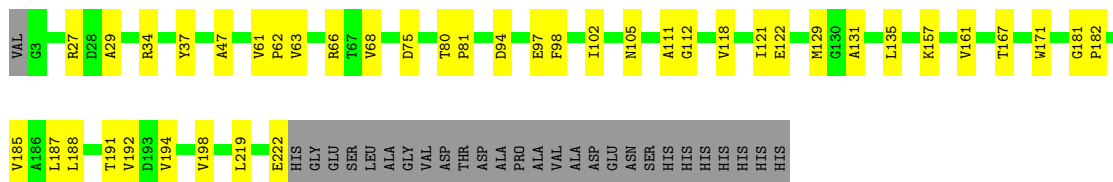
- Molecule 1: Sensory rhodopsin II

Chain 1-A:     
80% 9% 11%



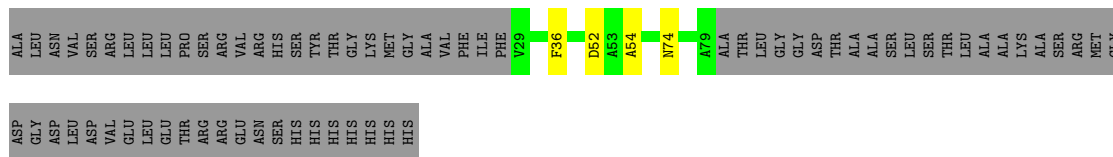
- Molecule 1: Sensory rhodopsin II

Chain 2-A:     
72% 17% 11%



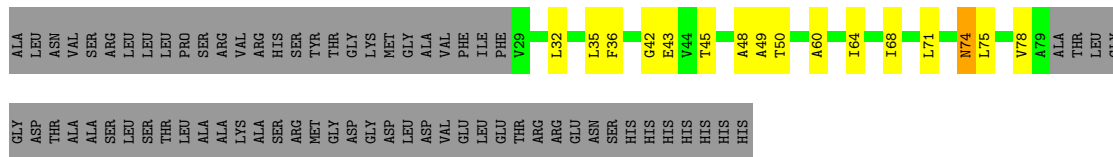
- Molecule 2: Sensory rhodopsin II transducer

Chain 1-B:     
39% 0% 58%



- Molecule 2: Sensory rhodopsin II transducer

Chain 2-B:      
29% 12% 0% 58%



## 4 Data and refinement statistics

Xtriage (Phenix) and EDS were not executed - this section is therefore incomplete.

Property	Value	Source
Space group	P 21 21 2	Depositor
Cell constants a, b, c, $\alpha$ , $\beta$ , $\gamma$	124.34Å 47.03Å 53.82Å 90.00° 90.00° 90.00°	Depositor
Resolution (Å)	34.06 – 2.00	Depositor
% Data completeness (in resolution range)	92.2 (34.06-2.00)	Depositor
$R_{merge}$	0.09	Depositor
$R_{sym}$	(Not available)	Depositor
Refinement program	CNS 1.1	Depositor
R, $R_{free}$	0.218 , 0.245	Depositor
Estimated twinning fraction	No twinning to report.	Xtriage
Total number of atoms	4150	wwPDB-VP
Average B, all atoms (Å <sup>2</sup> )	26.0	wwPDB-VP

## 5 Model quality [i](#)

### 5.1 Standard geometry [i](#)

Bond lengths and bond angles in the following residue types are not validated in this section: BOG, RET

The Z score for a bond length (or angle) is the number of standard deviations the observed value is removed from the expected value. A bond length (or angle) with  $|Z| > 5$  is considered an outlier worth inspection. RMSZ is the root-mean-square of all Z scores of the bond lengths (or angles).

Mol	Chain	Bond lengths		Bond angles	
		RMSZ	$\# Z  > 5$	RMSZ	$\# Z  > 5$
1	1-A	0.35	0/1706	0.52	0/2335
2	1-B	0.38	1/338 (0.3%)	0.46	0/463
All	All	0.35	1/2044 (0.0%)	0.51	0/2798

Chiral center outliers are detected by calculating the chiral volume of a chiral center and verifying if the center is modelled as a planar moiety or with the opposite hand. A planarity outlier is detected by checking planarity of atoms in a peptide group, atoms in a mainchain group or atoms of a sidechain that are expected to be planar.

Mol	Chain	#Chirality outliers	#Planarity outliers
2	2-B	0	1

All (1) bond length outliers are listed below:

Mol	Chain	Res	Type	Atoms	Z	Observed(Å)	Ideal(Å)
2	1-B	74[A]	ASN	C-N	-5.32	1.21	1.34

There are no bond angle outliers.

There are no chirality outliers.

All (1) planarity outliers are listed below:

Mol	Chain	Res	Type	Group
2	2-B	74[B]	ASN	Mainchain

### 5.2 Too-close contacts [i](#)

In the following table, the Non-H and H(model) columns list the number of non-hydrogen atoms and hydrogen atoms in the chain respectively. The H(added) column lists the number of hydrogen atoms added and optimized by MolProbity. The Clashes column lists the number of clashes within



the asymmetric unit, whereas Symm-Clashes lists symmetry-related clashes.

Mol	Chain	Non-H	H(model)	H(added)	Clashes	Symm-Clashes
1	1-A	1664	0	1730	16	0
1	2-A	1664	0	1730	26	0
2	1-B	337	0	361	2	0
2	2-B	337	0	361	9	0
3	1-A	20	0	28	1	0
3	2-A	20	0	28	1	0
4	1-A	20	0	27	2	0
4	2-A	20	0	27	3	0
5	1-A	34	0	0	1	0
5	1-B	1	0	0	0	0
5	2-A	31	0	0	0	0
5	2-B	2	0	0	0	0
All	All	4150	0	4292	52	0

The all-atom clashscore is defined as the number of clashes found per 1000 atoms (including hydrogen atoms). The all-atom clashscore for this structure is 6.

The worst 5 of 52 close contacts within the same asymmetric unit are listed below, sorted by their clash magnitude.

Atom-1	Atom-2	Interatomic distance (Å)	Clash overlap (Å)
1:A:61[B]:VAL:HB	1:A:68[B]:VAL:HG22	1.54	0.88
1:A:118[B]:VAL:HG11	1:A:122[B]:GLU:OE2	1.88	0.74
1:A:47[B]:ALA:HA	1:A:75[B]:ASP:OD1	1.96	0.66
1:A:121[A]:ILE:HD12	1:A:122[A]:GLU:N	2.14	0.63
1:A:194[B]:VAL:O	1:A:198[B]:VAL:HG23	2.00	0.62

There are no symmetry-related clashes.

## 5.3 Torsion angles [i](#)

### 5.3.1 Protein backbone [i](#)

In the following table, the Percentiles column shows the percent Ramachandran outliers of the chain as a percentile score with respect to all X-ray entries followed by that with respect to entries of similar resolution.

The Analysed column shows the number of residues for which the backbone conformation was analysed, and the total number of residues.

Mol	Chain	Analysed	Favoured	Allowed	Outliers	Percentiles	
1	1-A	218/248 (88%)	215 (99%)	3 (1%)	0	100	100
1	2-A	218/248 (88%)	216 (99%)	2 (1%)	0	100	100
2	1-B	49/122 (40%)	49 (100%)	0	0	100	100
2	2-B	49/122 (40%)	48 (98%)	0	1 (2%)	7	3
All	All	534/740 (72%)	528 (99%)	5 (1%)	1 (0%)	47	44

All (1) Ramachandran outliers are listed below:

Mol	Chain	Res	Type
2	2-B	49[B]	ALA

### 5.3.2 Protein sidechains [i](#)

In the following table, the Percentiles column shows the percent sidechain outliers of the chain as a percentile score with respect to all X-ray entries followed by that with respect to entries of similar resolution.

The Analysed column shows the number of residues for which the sidechain conformation was analysed, and the total number of residues.

Mol	Chain	Analysed	Rotameric	Outliers	Percentiles	
1	1-A	167/189 (88%)	167 (100%)	0	100	100
2	1-B	30/87 (34%)	30 (100%)	0	100	100
All	All	197/276 (71%)	197 (100%)	0	100	100

There are no protein residues with a non-rotameric sidechain to report.

Sometimes sidechains can be flipped to improve hydrogen bonding and reduce clashes. All (1) such sidechains are listed below:

Mol	Chain	Res	Type
1	1-A	105[A]	ASN

### 5.3.3 RNA [i](#)

There are no RNA molecules in this entry.

## 5.4 Non-standard residues in protein, DNA, RNA chains [i](#)

There are no non-standard protein/DNA/RNA residues in this entry.

## 5.5 Carbohydrates [i](#)

There are no monosaccharides in this entry.

## 5.6 Ligand geometry [i](#)

4 ligands are modelled in this entry.

In the following table, the Counts columns list the number of bonds (or angles) for which Mogul statistics could be retrieved, the number of bonds (or angles) that are observed in the model and the number of bonds (or angles) that are defined in the Chemical Component Dictionary. The Link column lists molecule types, if any, to which the group is linked. The Z score for a bond length (or angle) is the number of standard deviations the observed value is removed from the expected value. A bond length (or angle) with  $|Z| > 2$  is considered an outlier worth inspection. RMSZ is the root-mean-square of all Z scores of the bond lengths (or angles).

Mol	Type	Chain	Res	Link	Bond lengths			Bond angles		
					Counts	RMSZ	# Z  > 2	Counts	RMSZ	# Z  > 2
3	BOG	1-A	300[A]	-	20,20,20	1.14	2 (10%)	25,25,25	0.71	0
3	BOG	2-A	300[B]	-	20,20,20	1.14	2 (10%)	25,25,25	0.71	0
4	RET	1-A	301[A]	1	20,20,21	1.78	5 (25%)	27,27,28	2.22	11 (40%)
4	RET	2-A	301[B]	-	20,20,21	1.80	9 (45%)	27,27,28	2.37	11 (40%)

In the following table, the Chirals column lists the number of chiral outliers, the number of chiral centers analysed, the number of these observed in the model and the number defined in the Chemical Component Dictionary. Similar counts are reported in the Torsion and Rings columns. '-' means no outliers of that kind were identified.

Mol	Type	Chain	Res	Link	Chirals	Torsions	Rings
3	BOG	1-A	300[A]	-	-	2/11/31/31	0/1/1/1
3	BOG	2-A	300[B]	-	-	2/11/31/31	0/1/1/1
4	RET	1-A	301[A]	1	-	2/13/30/31	0/1/1/1
4	RET	2-A	301[B]	-	-	0/13/30/31	0/1/1/1

The worst 5 of 18 bond length outliers are listed below:

Mol	Chain	Res	Type	Atoms	Z	Observed(Å)	Ideal(Å)
4	1-A	301[A]	RET	C14-C13	3.75	1.36	1.33
3	1-A	300[A]	BOG	O5-C1	3.44	1.50	1.41
3	2-A	300[B]	BOG	O5-C1	3.44	1.50	1.41
4	1-A	301[A]	RET	C1-C6	3.28	1.58	1.53
4	2-A	301[B]	RET	C17-C1	3.26	1.60	1.53

The worst 5 of 22 bond angle outliers are listed below:

Mol	Chain	Res	Type	Atoms	Z	Observed(°)	Ideal(°)
4	2-A	301[B]	RET	C11-C10-C9	-5.88	118.91	127.31
4	1-A	301[A]	RET	C18-C5-C6	5.20	130.36	124.53
4	2-A	301[B]	RET	C18-C5-C6	5.10	130.26	124.53
4	1-A	301[A]	RET	C11-C10-C9	-4.49	120.90	127.31
4	1-A	301[A]	RET	C8-C9-C10	-3.82	113.08	118.94

There are no chirality outliers.

5 of 6 torsion outliers are listed below:

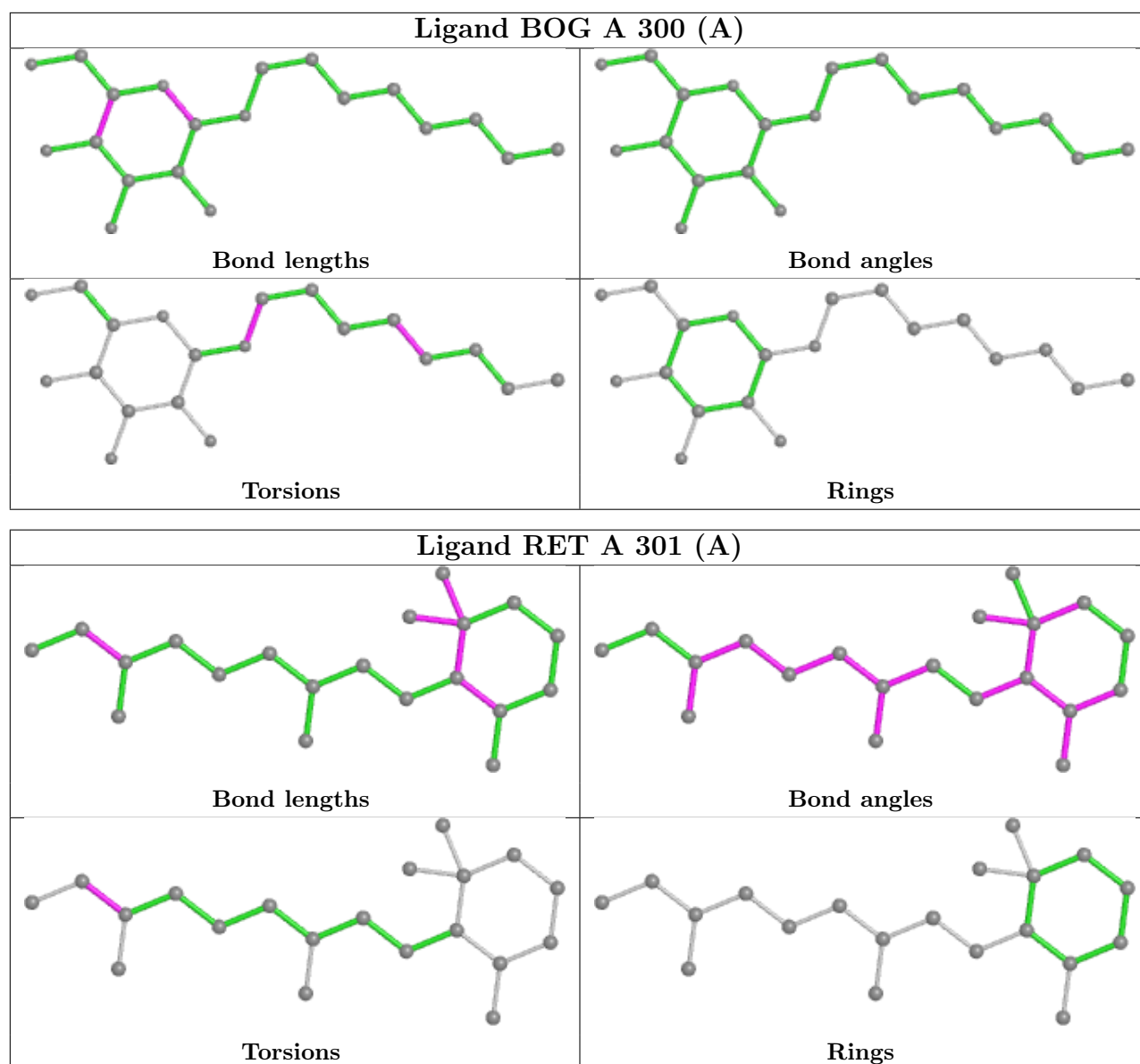
Mol	Chain	Res	Type	Atoms
4	1-A	301[A]	RET	C20-C13-C14-C15
3	1-A	300[A]	BOG	C2'-C1'-O1-C1
3	2-A	300[B]	BOG	C2'-C1'-O1-C1
4	1-A	301[A]	RET	C12-C13-C14-C15
3	1-A	300[A]	BOG	C3'-C4'-C5'-C6'

There are no ring outliers.

4 monomers are involved in 7 short contacts:

Mol	Chain	Res	Type	Clashes	Symm-Clashes
3	1-A	300[A]	BOG	1	0
3	2-A	300[B]	BOG	1	0
4	1-A	301[A]	RET	2	0
4	2-A	301[B]	RET	3	0

The following is a two-dimensional graphical depiction of Mogul quality analysis of bond lengths, bond angles, torsion angles, and ring geometry for all instances of the Ligand of Interest. In addition, ligands with molecular weight > 250 and outliers as shown on the validation Tables will also be included. For torsion angles, if less than 5% of the Mogul distribution of torsion angles is within 10 degrees of the torsion angle in question, then that torsion angle is considered an outlier. Any bond that is central to one or more torsion angles identified as an outlier by Mogul will be highlighted in the graph. For rings, the root-mean-square deviation (RMSD) between the ring in question and similar rings identified by Mogul is calculated over all ring torsion angles. If the average RMSD is greater than 60 degrees and the minimal RMSD between the ring in question and any Mogul-identified rings is also greater than 60 degrees, then that ring is considered an outlier. The outliers are highlighted in purple. The color gray indicates Mogul did not find sufficient equivalents in the CSD to analyse the geometry.



## 5.7 Other polymers [i](#)

There are no such residues in this entry.

## 5.8 Polymer linkage issues [i](#)

There are no chain breaks in this entry.

## 6 Fit of model and data

### 6.1 Protein, DNA and RNA chains

EDS was not executed - this section is therefore empty.

### 6.2 Non-standard residues in protein, DNA, RNA chains

EDS was not executed - this section is therefore empty.

### 6.3 Carbohydrates

EDS was not executed - this section is therefore empty.

### 6.4 Ligands

EDS was not executed - this section is therefore empty.

### 6.5 Other polymers

EDS was not executed - this section is therefore empty.