



Full wwPDB X-ray Structure Validation Report ⓘ

Feb 18, 2024 – 12:34 PM EST

PDB ID : 4F9B
Title : Human CDC7 kinase in complex with DBF4 and PHA767491
Authors : Hughes, S.; Cherepanov, P.
Deposited on : 2012-05-18
Resolution : 2.50 Å(reported)

This is a Full wwPDB X-ray Structure Validation Report for a publicly released PDB entry.

We welcome your comments at validation@mail.wwpdb.org

A user guide is available at

<https://www.wwpdb.org/validation/2017/XrayValidationReportHelp>

with specific help available everywhere you see the ⓘ symbol.

The types of validation reports are described at

<http://www.wwpdb.org/validation/2017/FAQs#types>.

The following versions of software and data (see [references ⓘ](#)) were used in the production of this report:

MolProbity : 4.02b-467
Mogul : 1.8.5 (274361), CSD as541be (2020)
Xtrriage (Phenix) : 1.13
EDS : 2.36
Percentile statistics : 20191225.v01 (using entries in the PDB archive December 25th 2019)
Refmac : 5.8.0158
CCP4 : 7.0.044 (Gargrove)
Ideal geometry (proteins) : Engh & Huber (2001)
Ideal geometry (DNA, RNA) : Parkinson et al. (1996)
Validation Pipeline (wwPDB-VP) : 2.36

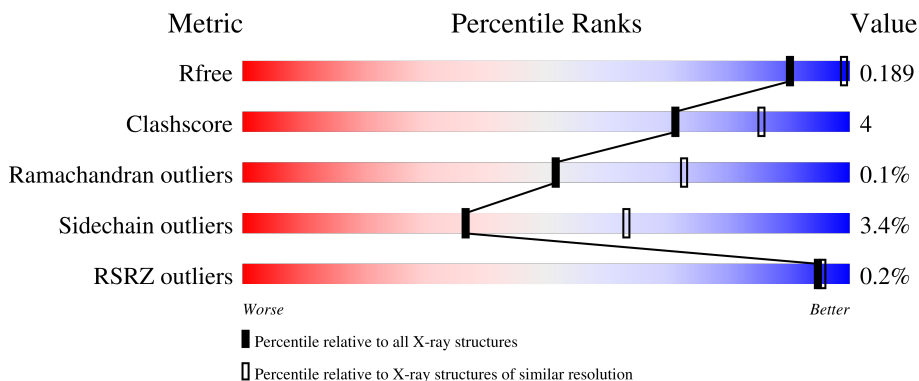
1 Overall quality at a glance

The following experimental techniques were used to determine the structure:

X-RAY DIFFRACTION

The reported resolution of this entry is 2.50 Å.

Percentile scores (ranging between 0-100) for global validation metrics of the entry are shown in the following graphic. The table shows the number of entries on which the scores are based.



Metric	Whole archive (#Entries)	Similar resolution (#Entries, resolution range(Å))
R_{free}	130704	4661 (2.50-2.50)
Clashscore	141614	5346 (2.50-2.50)
Ramachandran outliers	138981	5231 (2.50-2.50)
Sidechain outliers	138945	5233 (2.50-2.50)
RSRZ outliers	127900	4559 (2.50-2.50)

The table below summarises the geometric issues observed across the polymeric chains and their fit to the electron density. The red, orange, yellow and green segments of the lower bar indicate the fraction of residues that contain outliers for ≥ 3 , 2, 1 and 0 types of geometric quality criteria respectively. A grey segment represents the fraction of residues that are not modelled. The numeric value for each fraction is indicated below the corresponding segment, with a dot representing fractions $\leq 5\%$. The upper red bar (where present) indicates the fraction of residues that have poor fit to the electron density. The numeric value is given above the bar.

Mol	Chain	Length	Quality of chain
1	A	361	78% 10% 12%
1	C	361	77% 10% 12%
2	B	144	% 54% 8% 38%
2	D	144	55% 7% 38%

2 Entry composition i

There are 5 unique types of molecules in this entry. The entry contains 6669 atoms, of which 0 are hydrogens and 0 are deuteriums.

In the tables below, the ZeroOcc column contains the number of atoms modelled with zero occupancy, the AltConf column contains the number of residues with at least one atom in alternate conformation and the Trace column contains the number of residues modelled with at most 2 atoms.

- Molecule 1 is a protein called Cell division cycle 7-related protein kinase.

Mol	Chain	Residues	Atoms					ZeroOcc	AltConf	Trace
			Total	C	N	O	S			
1	A	318	Total	C	N	O	S	0	0	0
			2521	1618	432	460	11			
1	C	316	Total	C	N	O	S	0	0	0
			2500	1606	426	457	11			

There are 2 discrepancies between the modelled and reference sequences:

Chain	Residue	Modelled	Actual	Comment	Reference
A	36	MET	-	expression tag	UNP O00311
C	36	MET	-	expression tag	UNP O00311

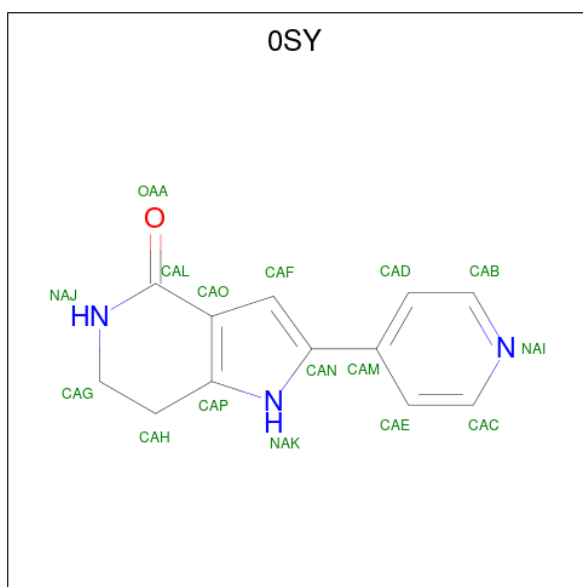
- Molecule 2 is a protein called Protein DBF4 homolog A.

Mol	Chain	Residues	Atoms					ZeroOcc	AltConf	Trace
			Total	C	N	O	S			
2	B	90	Total	C	N	O	S	0	0	0
			758	490	121	141	6			
2	D	90	Total	C	N	O	S	0	0	0
			752	487	118	141	6			

There are 6 discrepancies between the modelled and reference sequences:

Chain	Residue	Modelled	Actual	Comment	Reference
B	207	GLY	-	expression tag	UNP Q9UBU7
B	208	PRO	-	expression tag	UNP Q9UBU7
B	209	GLY	-	expression tag	UNP Q9UBU7
D	207	GLY	-	expression tag	UNP Q9UBU7
D	208	PRO	-	expression tag	UNP Q9UBU7
D	209	GLY	-	expression tag	UNP Q9UBU7

- Molecule 3 is 2-(pyridin-4-yl)-1,5,6,7-tetrahydro-4H-pyrrolo[3,2-c]pyridin-4-one (three-letter code: 0SY) (formula: C₁₂H₁₁N₃O).



Mol	Chain	Residues	Atoms				ZeroOcc	AltConf
3	A	1	Total	C	N	O	0	0
			16	12	3	1		
3	C	1	Total	C	N	O	0	0
			16	12	3	1		

- Molecule 4 is ZINC ION (three-letter code: ZN) (formula: Zn).

Mol	Chain	Residues	Atoms		ZeroOcc	AltConf
4	B	1	Total	Zn	0	0
			1	1		
4	D	1	Total	Zn	0	0
			1	1		

- Molecule 5 is water.

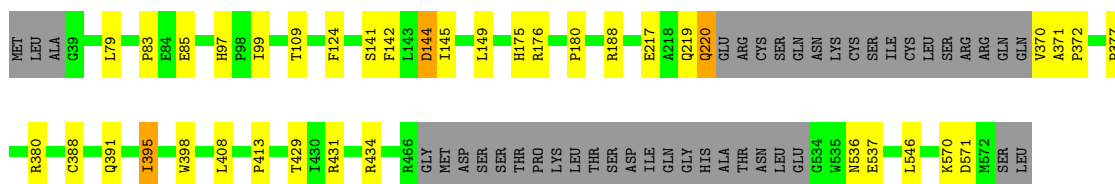
Mol	Chain	Residues	Atoms		ZeroOcc	AltConf
5	A	53	Total	O	0	0
			53	53		
5	B	12	Total	O	0	0
			12	12		
5	C	33	Total	O	0	0
			33	33		
5	D	6	Total	O	0	0
			6	6		

3 Residue-property plots [i](#)


These plots are drawn for all protein, RNA, DNA and oligosaccharide chains in the entry. The first graphic for a chain summarises the proportions of the various outlier classes displayed in the second graphic. The second graphic shows the sequence view annotated by issues in geometry and electron density. Residues are color-coded according to the number of geometric quality criteria for which they contain at least one outlier: green = 0, yellow = 1, orange = 2 and red = 3 or more. A red dot above a residue indicates a poor fit to the electron density ($RSRZ > 2$). Stretches of 2 or more consecutive residues without any outlier are shown as a green connector. Residues present in the sample, but not in the model, are shown in grey.

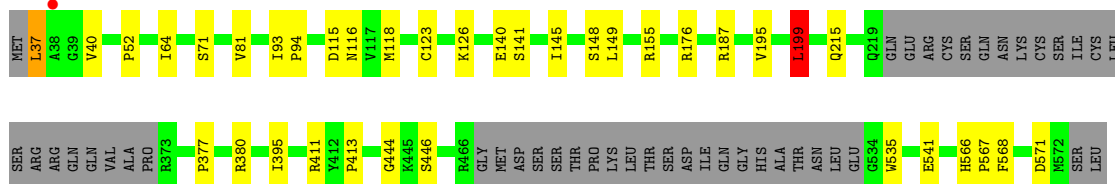
- Molecule 1: Cell division cycle 7-related protein kinase

Chain A: 



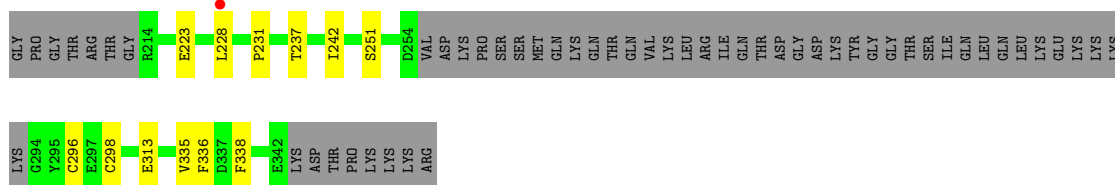
- Molecule 1: Cell division cycle 7-related protein kinase

Chain C: 



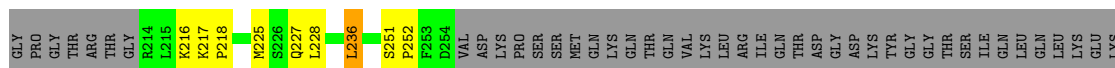
- Molecule 2: Protein DBF4 homolog A

Chain B: 



- Molecule 2: Protein DBF4 homolog A

Chain D: 



LYS	LYS	LYS	G254	L300	V331	E342	LYS	ASP	THR	PRO	LYS	LYS	LYS	ARG
-----	-----	-----	------	------	------	------	-----	-----	-----	-----	-----	-----	-----	-----

4 Data and refinement statistics

Property	Value	Source
Space group	P 21 21 21	Depositor
Cell constants a, b, c, α , β , γ	60.92Å 67.88Å 238.16Å 90.00° 90.00° 90.00°	Depositor
Resolution (Å)	59.54 – 2.50 65.28 – 2.50	Depositor EDS
% Data completeness (in resolution range)	99.8 (59.54-2.50) 99.9 (65.28-2.50)	Depositor EDS
R_{merge}	0.07	Depositor
R_{sym}	(Not available)	Depositor
$\langle I/\sigma(I) \rangle$ ¹	3.08 (at 2.51Å)	Xtrriage
Refinement program	REFMAC 5.6.0117	Depositor
R, R_{free}	0.187 , 0.239 0.188 , 0.189	Depositor DCC
R_{free} test set	1760 reflections (5.02%)	wwPDB-VP
Wilson B-factor (Å ²)	52.2	Xtrriage
Anisotropy	0.483	Xtrriage
Bulk solvent k_{sol} (e/Å ³), B_{sol} (Å ²)	0.34 , 46.2	EDS
L-test for twinning ²	$\langle L \rangle = 0.48$, $\langle L^2 \rangle = 0.31$	Xtrriage
Estimated twinning fraction	No twinning to report.	Xtrriage
F_o, F_c correlation	0.96	EDS
Total number of atoms	6669	wwPDB-VP
Average B, all atoms (Å ²)	56.0	wwPDB-VP

Xtrriage's analysis on translational NCS is as follows: *The largest off-origin peak in the Patterson function is 4.27% of the height of the origin peak. No significant pseudotranslation is detected.*

¹Intensities estimated from amplitudes.

²Theoretical values of $\langle |L| \rangle$, $\langle L^2 \rangle$ for acentric reflections are 0.5, 0.333 respectively for untwinned datasets, and 0.375, 0.2 for perfectly twinned datasets.

5 Model quality [i](#)

5.1 Standard geometry [i](#)

Bond lengths and bond angles in the following residue types are not validated in this section: ZN, OSY

The Z score for a bond length (or angle) is the number of standard deviations the observed value is removed from the expected value. A bond length (or angle) with $|Z| > 5$ is considered an outlier worth inspection. RMSZ is the root-mean-square of all Z scores of the bond lengths (or angles).

Mol	Chain	Bond lengths		Bond angles	
		RMSZ	# Z >5	RMSZ	# Z >5
1	A	0.66	1/2571 (0.0%)	0.75	1/3472 (0.0%)
1	C	0.58	1/2549 (0.0%)	0.69	1/3442 (0.0%)
2	B	0.56	0/777	0.70	0/1049
2	D	0.51	0/771	0.62	0/1042
All	All	0.60	2/6668 (0.0%)	0.71	2/9005 (0.0%)

All (2) bond length outliers are listed below:

Mol	Chain	Res	Type	Atoms	Z	Observed(Å)	Ideal(Å)
1	A	398	TRP	CD2-CE2	6.30	1.49	1.41
1	C	535	TRP	CD2-CE2	5.46	1.48	1.41

All (2) bond angle outliers are listed below:

Mol	Chain	Res	Type	Atoms	Z	Observed(°)	Ideal(°)
1	A	431	ARG	NE-CZ-NH1	5.48	123.04	120.30
1	C	199	LEU	CA-CB-CG	5.36	127.63	115.30

There are no chirality outliers.

There are no planarity outliers.

5.2 Too-close contacts [i](#)

In the following table, the Non-H and H(model) columns list the number of non-hydrogen atoms and hydrogen atoms in the chain respectively. The H(added) column lists the number of hydrogen atoms added and optimized by MolProbity. The Clashes column lists the number of clashes within the asymmetric unit, whereas Symm-Clashes lists symmetry-related clashes.

Mol	Chain	Non-H	H(model)	H(added)	Clashes	Symm-Clashes
1	A	2521	0	2562	19	0
1	C	2500	0	2538	21	0
2	B	758	0	723	5	0
2	D	752	0	712	7	0
3	A	16	0	11	0	0
3	C	16	0	11	0	0
4	B	1	0	0	0	0
4	D	1	0	0	0	0
5	A	53	0	0	0	0
5	B	12	0	0	0	0
5	C	33	0	0	1	0
5	D	6	0	0	0	0
All	All	6669	0	6557	46	0

The all-atom clashscore is defined as the number of clashes found per 1000 atoms (including hydrogen atoms). The all-atom clashscore for this structure is 4.

All (46) close contacts within the same asymmetric unit are listed below, sorted by their clash magnitude.

Atom-1	Atom-2	Interatomic distance (Å)	Clash overlap (Å)
1:C:377:PRO:HA	1:C:380:ARG:HD3	1.66	0.77
1:A:97:HIS:CE1	1:A:99:ILE:HD12	2.26	0.70
1:C:413:PRO:O	2:D:251:SER:HB2	1.97	0.64
1:C:566:HIS:CG	1:C:567:PRO:HD2	2.37	0.59
2:D:216:LYS:HG2	2:D:217:LYS:H	1.73	0.54
2:B:336:PHE:CE2	2:B:338:PHE:O	2.61	0.53
1:A:175:HIS:O	1:A:176:ARG:HB2	2.09	0.53
1:C:145:ILE:HD12	1:C:149:LEU:HD11	1.92	0.51
1:A:142:PHE:CD1	1:A:180:PRO:HB3	2.45	0.51
2:D:218:PRO:HD2	2:D:236:LEU:O	2.12	0.50
1:C:37:LEU:HA	1:C:40:VAL:HB	1.94	0.49
1:C:541:GLU:HG2	1:C:567:PRO:HB2	1.93	0.49
1:A:97:HIS:HE1	1:A:99:ILE:HD12	1.75	0.48
1:C:199:LEU:N	1:C:199:LEU:HD23	2.28	0.48
2:B:223:GLU:HG3	2:B:231:PRO:HB3	1.97	0.47
1:C:199:LEU:N	1:C:199:LEU:CD2	2.77	0.47
1:A:429:THR:HG22	2:B:242:ILE:HD11	1.95	0.47
1:A:141:SER:HB3	1:A:144:ASP:HB2	1.96	0.47
1:A:370:VAL:HG22	1:A:371:ALA:N	2.29	0.47
1:C:444:GLY:HA2	2:D:225:MET:HE2	1.96	0.46
1:C:155:ARG:HG3	1:C:568:PHE:CZ	2.50	0.46
1:A:408:LEU:HD12	1:A:546:LEU:HD22	1.97	0.46

Continued on next page...

Continued from previous page...

Atom-1	Atom-2	Interatomic distance (Å)	Clash overlap (Å)
1:C:566:HIS:ND1	1:C:567:PRO:HD2	2.32	0.45
1:A:176:ARG:HG2	1:A:395:ILE:HD11	1.99	0.45
1:A:413:PRO:O	2:B:251:SER:HB2	2.17	0.44
1:C:199:LEU:HD23	1:C:199:LEU:H	1.81	0.44
1:C:140:GLU:OE2	1:C:187:ARG:N	2.39	0.43
1:A:217:GLU:HG3	1:A:372:PRO:HB2	1.99	0.43
1:A:570:LYS:HA	1:A:571:ASP:HA	1.82	0.43
1:C:411:ARG:HG3	2:D:252:PRO:HD3	1.99	0.43
1:C:115:ASP:O	1:C:116:ASN:HB2	2.17	0.43
1:A:388:CYS:O	1:A:391:GLN:HG3	2.19	0.43
2:B:296:CYS:SG	2:B:298:CYS:HB2	2.59	0.43
1:C:380:ARG:NH1	5:C:709:HOH:O	2.52	0.42
1:C:123:CYS:HB3	2:D:331:VAL:HG22	2.01	0.42
1:C:176:ARG:HG2	1:C:395:ILE:HD11	2.02	0.41
1:A:124:PHE:CD2	1:A:124:PHE:N	2.88	0.41
1:A:219:GLN:O	1:A:220:GLN:HB2	2.20	0.41
1:A:145:ILE:HD13	1:A:149:LEU:HD11	2.03	0.41
2:D:216:LYS:HG2	2:D:217:LYS:N	2.36	0.41
1:A:377:PRO:HA	1:A:380:ARG:HD3	2.02	0.40
1:C:93:ILE:HA	1:C:94:PRO:HD3	1.74	0.40
1:C:118:MET:HB2	1:C:195:VAL:HG12	2.02	0.40
1:A:536:ASN:HB2	1:A:537:GLU:OE1	2.22	0.40
1:A:79:LEU:HD12	1:A:83:PRO:HG2	2.03	0.40
1:C:52:PRO:CD	1:C:126:LYS:HD2	2.51	0.40

There are no symmetry-related clashes.

5.3 Torsion angles [\(i\)](#)

5.3.1 Protein backbone [\(i\)](#)

In the following table, the Percentiles column shows the percent Ramachandran outliers of the chain as a percentile score with respect to all X-ray entries followed by that with respect to entries of similar resolution.

The Analysed column shows the number of residues for which the backbone conformation was analysed, and the total number of residues.

Mol	Chain	Analysed	Favoured	Allowed	Outliers	Percentiles
1	A	312/361 (86%)	295 (95%)	17 (5%)	0	100 100

Continued on next page...

Continued from previous page...

Mol	Chain	Analysed	Favoured	Allowed	Outliers	Percentiles	
1	C	310/361 (86%)	300 (97%)	10 (3%)	0	100	100
2	B	86/144 (60%)	83 (96%)	3 (4%)	0	100	100
2	D	86/144 (60%)	81 (94%)	4 (5%)	1 (1%)	13	24
All	All	794/1010 (79%)	759 (96%)	34 (4%)	1 (0%)	51	73

All (1) Ramachandran outliers are listed below:

Mol	Chain	Res	Type
2	D	300	LEU

5.3.2 Protein sidechains [i](#)

In the following table, the Percentiles column shows the percent sidechain outliers of the chain as a percentile score with respect to all X-ray entries followed by that with respect to entries of similar resolution.

The Analysed column shows the number of residues for which the sidechain conformation was analysed, and the total number of residues.

Mol	Chain	Analysed	Rotameric	Outliers	Percentiles	
1	A	273/313 (87%)	266 (97%)	7 (3%)	46	72
1	C	270/313 (86%)	260 (96%)	10 (4%)	34	60
2	B	87/136 (64%)	83 (95%)	4 (5%)	27	50
2	D	86/136 (63%)	83 (96%)	3 (4%)	36	62
All	All	716/898 (80%)	692 (97%)	24 (3%)	37	63

All (24) residues with a non-rotameric sidechain are listed below:

Mol	Chain	Res	Type
1	A	85	GLU
1	A	109	THR
1	A	144	ASP
1	A	188	ARG
1	A	220	GLN
1	A	395	ILE
1	A	434	ARG
2	B	228	LEU
2	B	237	THR
2	B	313	GLU

Continued on next page...

Continued from previous page...

Mol	Chain	Res	Type
2	B	335	VAL
1	C	37	LEU
1	C	64	ILE
1	C	71	SER
1	C	81	VAL
1	C	141	SER
1	C	148	SER
1	C	199	LEU
1	C	215	GLN
1	C	446	SER
1	C	571	ASP
2	D	227	GLN
2	D	228	LEU
2	D	236	LEU

Sometimes sidechains can be flipped to improve hydrogen bonding and reduce clashes. All (3) such sidechains are listed below:

Mol	Chain	Res	Type
2	B	317	ASN
1	C	114	GLN
1	C	201	GLN

5.3.3 RNA [i](#)

There are no RNA molecules in this entry.

5.4 Non-standard residues in protein, DNA, RNA chains [i](#)

There are no non-standard protein/DNA/RNA residues in this entry.

5.5 Carbohydrates [i](#)

There are no monosaccharides in this entry.

5.6 Ligand geometry [i](#)

Of 4 ligands modelled in this entry, 2 are monoatomic - leaving 2 for Mogul analysis.

In the following table, the Counts columns list the number of bonds (or angles) for which Mogul statistics could be retrieved, the number of bonds (or angles) that are observed in the model and the number of bonds (or angles) that are defined in the Chemical Component Dictionary. The Link column lists molecule types, if any, to which the group is linked. The Z score for a bond length (or angle) is the number of standard deviations the observed value is removed from the expected value. A bond length (or angle) with $|Z| > 2$ is considered an outlier worth inspection. RMSZ is the root-mean-square of all Z scores of the bond lengths (or angles).

Mol	Type	Chain	Res	Link	Bond lengths			Bond angles		
					Counts	RMSZ	# Z > 2	Counts	RMSZ	# Z > 2
3	OSY	C	601	-	16,18,18	3.28	7 (43%)	17,25,25	1.76	5 (29%)
3	OSY	A	601	-	16,18,18	3.68	8 (50%)	17,25,25	2.15	6 (35%)

In the following table, the Chirals column lists the number of chiral outliers, the number of chiral centers analysed, the number of these observed in the model and the number defined in the Chemical Component Dictionary. Similar counts are reported in the Torsion and Rings columns. '-' means no outliers of that kind were identified.

Mol	Type	Chain	Res	Link	Chirals	Torsions	Rings
3	OSY	C	601	-	-	0/4/14/14	0/3/3/3
3	OSY	A	601	-	-	0/4/14/14	0/3/3/3

All (15) bond length outliers are listed below:

Mol	Chain	Res	Type	Atoms	Z	Observed(Å)	Ideal(Å)
3	A	601	OSY	CAO-CAL	-8.21	1.33	1.47
3	C	601	OSY	CAM-CAN	-8.20	1.36	1.48
3	A	601	OSY	CAM-CAN	-8.18	1.36	1.48
3	C	601	OSY	CAO-CAL	-7.08	1.35	1.47
3	A	601	OSY	CAH-CAP	-5.20	1.42	1.50
3	C	601	OSY	CAH-CAP	-4.85	1.43	1.50
3	A	601	OSY	CAO-CAP	-3.92	1.34	1.38
3	C	601	OSY	CAC-NAI	3.13	1.43	1.33
3	A	601	OSY	CAF-CAO	-2.90	1.34	1.40
3	A	601	OSY	CAF-CAN	-2.88	1.34	1.40
3	A	601	OSY	CAC-NAI	2.87	1.42	1.33
3	C	601	OSY	CAB-NAI	2.50	1.41	1.33
3	A	601	OSY	CAB-NAI	2.47	1.41	1.33
3	C	601	OSY	CAO-CAP	-2.16	1.36	1.38
3	C	601	OSY	CAF-CAO	-2.09	1.36	1.40

All (11) bond angle outliers are listed below:

Mol	Chain	Res	Type	Atoms	Z	Observed(°)	Ideal(°)
3	A	601	0SY	CAO-CAL-NAJ	4.70	122.44	116.03
3	C	601	0SY	CAO-CAL-NAJ	4.04	121.54	116.03
3	A	601	0SY	CAF-CAN-CAM	-3.45	124.65	129.44
3	A	601	0SY	CAM-CAN-NAK	3.37	126.44	120.78
3	C	601	0SY	CAE-CAC-NAI	-2.74	118.85	123.62
3	C	601	0SY	CAG-CAH-CAP	2.44	117.50	113.00
3	A	601	0SY	CAG-CAH-CAP	2.36	117.36	113.00
3	A	601	0SY	CAH-CAG-NAJ	2.33	114.21	110.13
3	A	601	0SY	OAA-CAL-CAO	-2.10	119.66	123.30
3	C	601	0SY	CAD-CAB-NAI	-2.07	120.02	123.62
3	C	601	0SY	CAH-CAG-NAJ	2.06	113.73	110.13

There are no chirality outliers.

There are no torsion outliers.

There are no ring outliers.

No monomer is involved in short contacts.

5.7 Other polymers [i](#)

There are no such residues in this entry.

5.8 Polymer linkage issues [i](#)

There are no chain breaks in this entry.

6 Fit of model and data [i](#)

6.1 Protein, DNA and RNA chains [i](#)

In the following table, the column labelled ‘#RSRZ> 2’ contains the number (and percentage) of RSRZ outliers, followed by percent RSRZ outliers for the chain as percentile scores relative to all X-ray entries and entries of similar resolution. The OWAB column contains the minimum, median, 95th percentile and maximum values of the occupancy-weighted average B-factor per residue. The column labelled ‘Q< 0.9’ lists the number of (and percentage) of residues with an average occupancy less than 0.9.

Mol	Chain	Analysed	<RSRZ>	#RSRZ>2	OWAB(Å ²)	Q<0.9
1	A	318/361 (88%)	-0.13	0 100 100	26, 46, 78, 126	0
1	C	316/361 (87%)	-0.12	1 (0%) 94 94	34, 50, 85, 118	0
2	B	90/144 (62%)	0.11	1 (1%) 80 82	31, 64, 93, 99	0
2	D	90/144 (62%)	0.22	0 100 100	46, 72, 106, 113	0
All	All	814/1010 (80%)	-0.06	2 (0%) 95 95	26, 52, 93, 126	0

All (2) RSRZ outliers are listed below:

Mol	Chain	Res	Type	RSRZ
1	C	38	ALA	4.3
2	B	228	LEU	3.0

6.2 Non-standard residues in protein, DNA, RNA chains [i](#)

There are no non-standard protein/DNA/RNA residues in this entry.

6.3 Carbohydrates [i](#)

There are no monosaccharides in this entry.

6.4 Ligands [i](#)

In the following table, the Atoms column lists the number of modelled atoms in the group and the number defined in the chemical component dictionary. The B-factors column lists the minimum, median, 95th percentile and maximum values of B factors of atoms in the group. The column labelled ‘Q< 0.9’ lists the number of atoms with occupancy less than 0.9.

Mol	Type	Chain	Res	Atoms	RSCC	RSR	B-factors(\AA^2)	Q<0.9
3	OSY	C	601	16/16	0.97	0.14	36,39,43,45	0
4	ZN	B	401	1/1	0.98	0.14	71,71,71,71	0
3	OSY	A	601	16/16	0.99	0.14	34,36,40,42	0
4	ZN	D	401	1/1	0.99	0.12	81,81,81,81	0

6.5 Other polymers [i](#)

There are no such residues in this entry.