



## Full wwPDB EM Validation Report ⓘ

Nov 4, 2024 – 05:43 AM JST

PDB ID : 7FB1  
EMDB ID : EMD-31512  
Title : SARS-CoV-2 spike protein in one-RBD open state  
Authors : Zhu, Y.; Tai, L.H.; Sun, F.  
Deposited on : 2021-07-08  
Resolution : 3.70 Å (reported)

This is a Full wwPDB EM Validation Report for a publicly released PDB entry.

We welcome your comments at [validation@mail.wwpdb.org](mailto:validation@mail.wwpdb.org)

A user guide is available at

<https://www.wwpdb.org/validation/2017/EMValidationReportHelp>

with specific help available everywhere you see the ⓘ symbol.

The types of validation reports are described at

<http://www.wwpdb.org/validation/2017/FAQs#types>.

---

The following versions of software and data (see [references ⓘ](#)) were used in the production of this report:

EMDB validation analysis : 0.0.1.dev113  
MolProbity : 4.02b-467  
Percentile statistics : 20231227.v01 (using entries in the PDB archive December 27th 2023)  
MapQ : 1.9.13  
Ideal geometry (proteins) : Engh & Huber (2001)  
Ideal geometry (DNA, RNA) : Parkinson et al. (1996)  
Validation Pipeline (wwPDB-VP) : 2.39

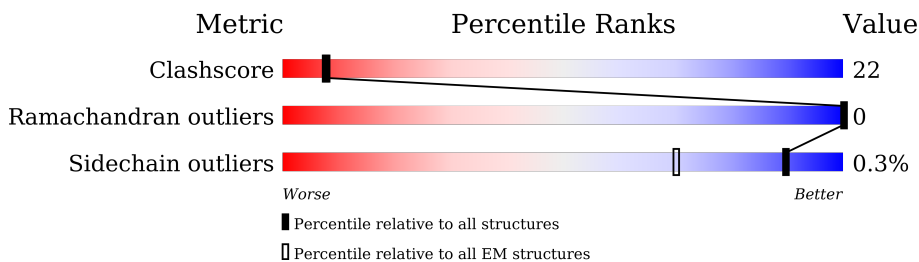
# 1 Overall quality at a glance

The following experimental techniques were used to determine the structure:

*ELECTRON MICROSCOPY*

The reported resolution of this entry is 3.70 Å.

Percentile scores (ranging between 0-100) for global validation metrics of the entry are shown in the following graphic. The table shows the number of entries on which the scores are based.



Metric	Whole archive (#Entries)	EM structures (#Entries)
Clashscore	210492	15764
Ramachandran outliers	207382	16835
Sidechain outliers	206894	16415

The table below summarises the geometric issues observed across the polymeric chains and their fit to the map. The red, orange, yellow and green segments of the bar indicate the fraction of residues that contain outliers for  $\geq 3$ , 2, 1 and 0 types of geometric quality criteria respectively. A grey segment represents the fraction of residues that are not modelled. The numeric value for each fraction is indicated below the corresponding segment, with a dot representing fractions  $\leq 5\%$ . The upper red bar (where present) indicates the fraction of residues that have poor fit to the EM map (all-atom inclusion  $< 40\%$ ). The numeric value is given above the bar.

Mol	Chain	Length	Quality of chain
1	A	1247	 6% 49% 34% 17%
1	B	1247	 6% 48% 35% 17%
1	C	1247	 47% 35% 17%

## 2 Entry composition i

There is only 1 type of molecule in this entry. The entry contains 24168 atoms, of which 0 are hydrogens and 0 are deuteriums.

In the tables below, the AltConf column contains the number of residues with at least one atom in alternate conformation and the Trace column contains the number of residues modelled with at most 2 atoms.

- Molecule 1 is a protein called Spike glycoprotein.

Mol	Chain	Residues	Atoms					AltConf	Trace
			Total	C	N	O	S		
1	A	1029	8039	5133	1338	1530	38	0	0
1	B	1036	8091	5168	1346	1540	37	0	0
1	C	1029	8038	5136	1336	1529	37	0	0

There are 132 discrepancies between the modelled and reference sequences:

Chain	Residue	Modelled	Actual	Comment	Reference
A	682	GLY	ARG	engineered mutation	UNP P0DTC2
A	683	ALA	ARG	engineered mutation	UNP P0DTC2
A	685	SER	ARG	engineered mutation	UNP P0DTC2
A	986	PRO	LYS	engineered mutation	UNP P0DTC2
A	987	PRO	VAL	engineered mutation	UNP P0DTC2
A	1209	LEU	-	expression tag	UNP P0DTC2
A	1210	VAL	-	expression tag	UNP P0DTC2
A	1211	PRO	-	expression tag	UNP P0DTC2
A	1212	ARG	-	expression tag	UNP P0DTC2
A	1213	GLY	-	expression tag	UNP P0DTC2
A	1214	SER	-	expression tag	UNP P0DTC2
A	1215	GLY	-	expression tag	UNP P0DTC2
A	1216	TYR	-	expression tag	UNP P0DTC2
A	1217	ILE	-	expression tag	UNP P0DTC2
A	1218	PRO	-	expression tag	UNP P0DTC2
A	1219	GLU	-	expression tag	UNP P0DTC2
A	1220	ALA	-	expression tag	UNP P0DTC2
A	1221	PRO	-	expression tag	UNP P0DTC2
A	1222	ARG	-	expression tag	UNP P0DTC2
A	1223	ASP	-	expression tag	UNP P0DTC2
A	1224	GLY	-	expression tag	UNP P0DTC2
A	1225	GLN	-	expression tag	UNP P0DTC2
A	1226	ALA	-	expression tag	UNP P0DTC2
A	1227	TYR	-	expression tag	UNP P0DTC2

*Continued on next page...*

*Continued from previous page...*

Chain	Residue	Modelled	Actual	Comment	Reference
A	1228	VAL	-	expression tag	UNP P0DTC2
A	1229	ARG	-	expression tag	UNP P0DTC2
A	1230	LYS	-	expression tag	UNP P0DTC2
A	1231	ASP	-	expression tag	UNP P0DTC2
A	1232	GLY	-	expression tag	UNP P0DTC2
A	1233	GLU	-	expression tag	UNP P0DTC2
A	1234	TRP	-	expression tag	UNP P0DTC2
A	1235	VAL	-	expression tag	UNP P0DTC2
A	1236	LEU	-	expression tag	UNP P0DTC2
A	1237	LEU	-	expression tag	UNP P0DTC2
A	1238	SER	-	expression tag	UNP P0DTC2
A	1239	THR	-	expression tag	UNP P0DTC2
A	1240	PHE	-	expression tag	UNP P0DTC2
A	1241	LEU	-	expression tag	UNP P0DTC2
A	1242	HIS	-	expression tag	UNP P0DTC2
A	1243	HIS	-	expression tag	UNP P0DTC2
A	1244	HIS	-	expression tag	UNP P0DTC2
A	1245	HIS	-	expression tag	UNP P0DTC2
A	1246	HIS	-	expression tag	UNP P0DTC2
A	1247	HIS	-	expression tag	UNP P0DTC2
B	682	GLY	ARG	engineered mutation	UNP P0DTC2
B	683	ALA	ARG	engineered mutation	UNP P0DTC2
B	685	SER	ARG	engineered mutation	UNP P0DTC2
B	986	PRO	LYS	engineered mutation	UNP P0DTC2
B	987	PRO	VAL	engineered mutation	UNP P0DTC2
B	1209	LEU	-	expression tag	UNP P0DTC2
B	1210	VAL	-	expression tag	UNP P0DTC2
B	1211	PRO	-	expression tag	UNP P0DTC2
B	1212	ARG	-	expression tag	UNP P0DTC2
B	1213	GLY	-	expression tag	UNP P0DTC2
B	1214	SER	-	expression tag	UNP P0DTC2
B	1215	GLY	-	expression tag	UNP P0DTC2
B	1216	TYR	-	expression tag	UNP P0DTC2
B	1217	ILE	-	expression tag	UNP P0DTC2
B	1218	PRO	-	expression tag	UNP P0DTC2
B	1219	GLU	-	expression tag	UNP P0DTC2
B	1220	ALA	-	expression tag	UNP P0DTC2
B	1221	PRO	-	expression tag	UNP P0DTC2
B	1222	ARG	-	expression tag	UNP P0DTC2
B	1223	ASP	-	expression tag	UNP P0DTC2
B	1224	GLY	-	expression tag	UNP P0DTC2
B	1225	GLN	-	expression tag	UNP P0DTC2

*Continued on next page...*

*Continued from previous page...*

Chain	Residue	Modelled	Actual	Comment	Reference
B	1226	ALA	-	expression tag	UNP P0DTC2
B	1227	TYR	-	expression tag	UNP P0DTC2
B	1228	VAL	-	expression tag	UNP P0DTC2
B	1229	ARG	-	expression tag	UNP P0DTC2
B	1230	LYS	-	expression tag	UNP P0DTC2
B	1231	ASP	-	expression tag	UNP P0DTC2
B	1232	GLY	-	expression tag	UNP P0DTC2
B	1233	GLU	-	expression tag	UNP P0DTC2
B	1234	TRP	-	expression tag	UNP P0DTC2
B	1235	VAL	-	expression tag	UNP P0DTC2
B	1236	LEU	-	expression tag	UNP P0DTC2
B	1237	LEU	-	expression tag	UNP P0DTC2
B	1238	SER	-	expression tag	UNP P0DTC2
B	1239	THR	-	expression tag	UNP P0DTC2
B	1240	PHE	-	expression tag	UNP P0DTC2
B	1241	LEU	-	expression tag	UNP P0DTC2
B	1242	HIS	-	expression tag	UNP P0DTC2
B	1243	HIS	-	expression tag	UNP P0DTC2
B	1244	HIS	-	expression tag	UNP P0DTC2
B	1245	HIS	-	expression tag	UNP P0DTC2
B	1246	HIS	-	expression tag	UNP P0DTC2
B	1247	HIS	-	expression tag	UNP P0DTC2
C	682	GLY	ARG	engineered mutation	UNP P0DTC2
C	683	ALA	ARG	engineered mutation	UNP P0DTC2
C	685	SER	ARG	engineered mutation	UNP P0DTC2
C	986	PRO	LYS	engineered mutation	UNP P0DTC2
C	987	PRO	VAL	engineered mutation	UNP P0DTC2
C	1209	LEU	-	expression tag	UNP P0DTC2
C	1210	VAL	-	expression tag	UNP P0DTC2
C	1211	PRO	-	expression tag	UNP P0DTC2
C	1212	ARG	-	expression tag	UNP P0DTC2
C	1213	GLY	-	expression tag	UNP P0DTC2
C	1214	SER	-	expression tag	UNP P0DTC2
C	1215	GLY	-	expression tag	UNP P0DTC2
C	1216	TYR	-	expression tag	UNP P0DTC2
C	1217	ILE	-	expression tag	UNP P0DTC2
C	1218	PRO	-	expression tag	UNP P0DTC2
C	1219	GLU	-	expression tag	UNP P0DTC2
C	1220	ALA	-	expression tag	UNP P0DTC2
C	1221	PRO	-	expression tag	UNP P0DTC2
C	1222	ARG	-	expression tag	UNP P0DTC2
C	1223	ASP	-	expression tag	UNP P0DTC2

*Continued on next page...*

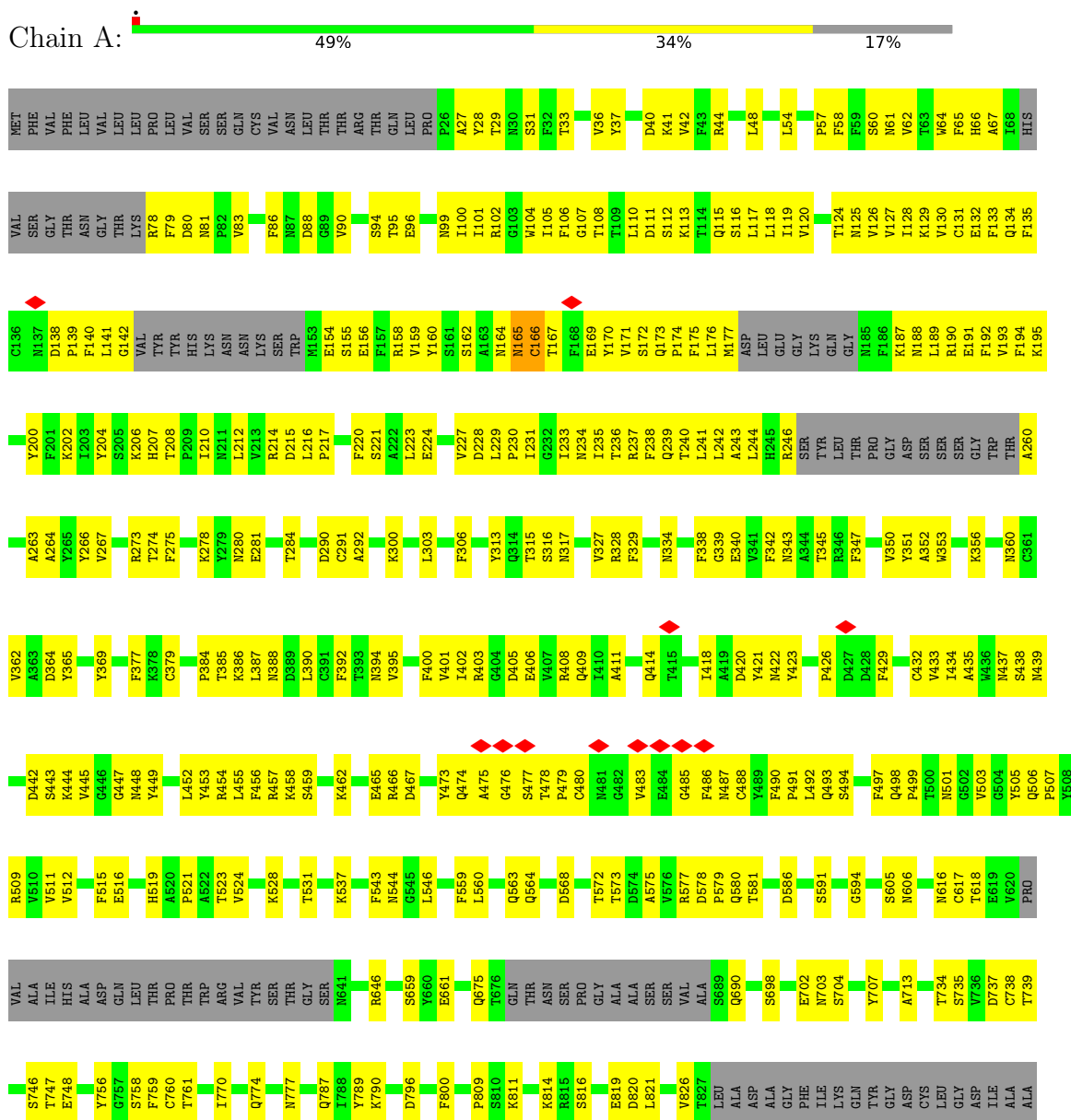
*Continued from previous page...*

Chain	Residue	Modelled	Actual	Comment	Reference
C	1224	GLY	-	expression tag	UNP P0DTC2
C	1225	GLN	-	expression tag	UNP P0DTC2
C	1226	ALA	-	expression tag	UNP P0DTC2
C	1227	TYR	-	expression tag	UNP P0DTC2
C	1228	VAL	-	expression tag	UNP P0DTC2
C	1229	ARG	-	expression tag	UNP P0DTC2
C	1230	LYS	-	expression tag	UNP P0DTC2
C	1231	ASP	-	expression tag	UNP P0DTC2
C	1232	GLY	-	expression tag	UNP P0DTC2
C	1233	GLU	-	expression tag	UNP P0DTC2
C	1234	TRP	-	expression tag	UNP P0DTC2
C	1235	VAL	-	expression tag	UNP P0DTC2
C	1236	LEU	-	expression tag	UNP P0DTC2
C	1237	LEU	-	expression tag	UNP P0DTC2
C	1238	SER	-	expression tag	UNP P0DTC2
C	1239	THR	-	expression tag	UNP P0DTC2
C	1240	PHE	-	expression tag	UNP P0DTC2
C	1241	LEU	-	expression tag	UNP P0DTC2
C	1242	HIS	-	expression tag	UNP P0DTC2
C	1243	HIS	-	expression tag	UNP P0DTC2
C	1244	HIS	-	expression tag	UNP P0DTC2
C	1245	HIS	-	expression tag	UNP P0DTC2
C	1246	HIS	-	expression tag	UNP P0DTC2
C	1247	HIS	-	expression tag	UNP P0DTC2

### 3 Residue-property plots

These plots are drawn for all protein, RNA, DNA and oligosaccharide chains in the entry. The first graphic for a chain summarises the proportions of the various outlier classes displayed in the second graphic. The second graphic shows the sequence view annotated by issues in geometry and atom inclusion in map density. Residues are color-coded according to the number of geometric quality criteria for which they contain at least one outlier: green = 0, yellow = 1, orange = 2 and red = 3 or more. A red diamond above a residue indicates a poor fit to the EM map for this residue (all-atom inclusion < 40%). Stretches of 2 or more consecutive residues without any outlier are shown as a green connector. Residues present in the sample, but not in the model, are shown in grey.

#### • Molecule 1: Spike glycoprotein







GLN	THR	ASN	SER	PRO	GLY	ALA	ALA	SER	SER	VAL	ALA	S689	Q690	S691	I692	Y695	T696	M697	S698	S708	S711	I712	A713	T716	T719	I720	V722	M731	T734	S735	V736	D737	C738	T739	S746	T747	E748	L753	L754	Q755	S758	F759	L763	L767	Q774						
M777	E760	Y769	K790	P791	F800	S803	Q804	P807	D808	K811	K814	R815	S816	F817	I818	E819	D820	L821	L828	ALA	ASP	ALA	GLY	PHE	ILE	LYS	GLN	TYR	GLY	ASP	GLY	ASP	D737	CYS	C738	LEU	GLY	ASP	ILE	ALA	ALA	ALA	ARG	ASP	L849	I850	K854	L858	T859	V860	L870
T874	L877	L878	A879	T883	L894	F898	Q901	R905	F906	T912	Q913	N914	V915	Y917	E918	L922	Q926	A930	K933	A1056	L938	S939	V1065	A1070	Q1071	E1072	K1073	N1074	F1075	T1076	T1077	A1078	I1081	C1082	H1083	D1084	G1085	K1086	F1089	F1095	V1096	S1097	N978								
D979	S982	R983	L984	P987	E988	A989	E990	I993	R1000	S1003	F1007	S1030	E1031	S1037	K1038	C1043	H1048	L1049	F1052	S1055	A1056	V1065	A1070	Q1071	E1072	K1073	N1074	F1075	T1076	T1077	A1078	I1081	C1082	H1083	D1084	G1085	K1086	F1089	F1095	V1096	S1097	N978									
W1102	Q1106	I1115	T1116	T1117	D1118	N1125	C1126	I1132	M1135	T1136	V1137	P1140	L1141	L1145	SER	PHE	LYS	GLU	GLU	GLU	GLU	VAL	PRO	GLU	LEU	LEU	GLY	THR	SER	PRO	ASP	VAL	VAL	ASN	ALA	ALA	VAL	VAL	VAL	ASN	ILE	GLN	LYS	GLU	GLU	ILE					
ASP	ARG	LEU	ASN	GLU	VAL	ALA	LYS	ASN	LEU	ASN	ASN	GLU	SER	LEU	ILE	LYS	LEU	GLN	GLU	GLY	VAL	PRO	ARG	GLY	GLY	GLY	THR	PRO	GLU	ASP	GLY	GLN	ALA	ALA	TRP	VAL	LEU	LEU	SER	THR	PHE	LEU	HIS								
HIS	HIS	HIS	HIS	HIS	HIS	HIS	HIS	HIS	HIS	HIS	HIS	HIS	HIS	HIS	HIS	HIS	HIS	HIS	HIS	HIS	HIS	HIS	HIS	HIS	HIS	HIS	HIS	HIS	HIS	HIS	HIS	HIS	HIS	HIS	HIS	HIS	HIS	HIS	HIS	HIS	HIS	HIS	HIS	HIS	HIS	HIS	HIS				

• Molecule 1: Spike glycoprotein



MET	PHE	VAL	PHE	VAL	LEU	VAL	LEU	LEU	PHO	R78	F79	D80	N81	P82	V83	F86	N87	D88	G89	Y90	Y91	T95	E96	K97	S98	N99	I100	R101	T102	G103	R104	G105	V106	Y107	D108	K109	V110	F111	D112	S113	K114	L115	L116	L117	L118	I119	V120	M121	M125	V126	F127	I128	K129	V130	C131	E132	F133	Q134	I135	H69
V70	SER	GLY	THR	ASN	GLY	T76	K77	R78	F79	D80	N81	P82	V83	F86	N87	D88	G89	Y90	Y91	T95	E96	K97	S98	N99	I100	R101	T102	G103	R104	G105	V106	Y107	D108	K109	V110	F111	D112	S113	K114	L115	L116	L117	L118	I119	V120	M121	M125	V126	F127	I128	K129	V130	C131	E132	F133	Q134	I135	H69		
C136	P139	F140	A141	G142	VAL	T143	T144	HIS	L145	D146	ASN	ASN	LYS	SER	TRP	TRP	GLU	SER	E156	F157	A163	M164	M165	F168	F169	Y170	V171	S172	F175	L176	M177	ASP	LEU	GLY	GLY	LYS	GLN	GLY	M185	F186	L189	R190	E191	F192	F194	L197	D198	G199	Y200	F201										
K202	L203	K206	H207	T208	P209	L210	M211	L212	V213	R214	D215	Q218	A222	L223	L226	V227	D228	L229	P230	C232	I233	M234	L235	T236	R237	F238	Q239	T240	L241	L242	A243	L244	HIS	ARG	SER	TYR	L249	THR	PRO	GLY	ASP	SER	R346	F347	A419	D420	Y421	M422	L425	C432	M433	I434	A435	R437	V438	S359				
V267	G268	Y269	L270	D364	R273	T274	M280	G283	T284	D287	A288	V289	C291	P295	L296	E297	E298	T299	T302	S316	N317	V320	G321	P322	E324	R328	N331	N334	P337	E340	V341	R346	F347	A348	S349	V350	W353	N354	R355	K356	R357	L358	S359																	
N360	C361	V362	A363	D364	Y365	S366	V367	S371	A372	S373	F374	F377	K378	C379	V382	S383	P384	L387	N388	D389	L390	C391	F392	V395	Y396	I402	R403	T404	D405	R408	Q409	I410	A411	Q414	T415	G416	G417	I418	D420	Y421	M422	L425	C432	M433	I434	A435	R437	V438	S359											
S438	M439	M440	L441	D442	S443	K444	G447	M448	Y449	M450	Y451	L452	Y453	R454	L455	F456	R457	M460	L461	K462	E465	R466	D467	I468	S469	Y473	Q474	S477	T478	L560	P479	C480	V483	E484	G485	C488	Y489	F490	P491	L492	Q493	S494	Y495	G496	F497	Q498	Q506	P507	Y508	R509	V510	P589								
S514	F515	E516	H519	A520	P521	A522	T523	V524	C525	G526	P527	K528	T531	K535	N536	K537	V539	T547	G548	T549	T553	F554	S555	F559	L560	P561	F562	Q563	Q564	R567	D568	A570	I569	D571	T572	T573	D574	A575	V576	R577	Q580	L584	L585	D586	L587	T588	V510	P589												



## 4 Experimental information

Property	Value	Source
EM reconstruction method	SINGLE PARTICLE	Depositor
Imposed symmetry	POINT, Not provided	
Number of particles used	50585	Depositor
Resolution determination method	FSC 0.143 CUT-OFF	Depositor
CTF correction method	PHASE FLIPPING AND AMPLITUDE CORRECTION	Depositor
Microscope	FEI TITAN KRIOS	Depositor
Voltage (kV)	300	Depositor
Electron dose ( $e^-/\text{\AA}^2$ )	3	Depositor
Minimum defocus (nm)	Not provided	
Maximum defocus (nm)	Not provided	
Magnification	Not provided	
Image detector	GATAN K2 QUANTUM (4k x 4k)	Depositor
Maximum map value	2.334	Depositor
Minimum map value	-0.912	Depositor
Average map value	0.001	Depositor
Map value standard deviation	0.070	Depositor
Recommended contour level	0.25	Depositor
Map size (Å)	348.16, 348.16, 348.16	wwPDB
Map dimensions	256, 256, 256	wwPDB
Map angles (°)	90.0, 90.0, 90.0	wwPDB
Pixel spacing (Å)	1.36, 1.36, 1.36	Depositor

## 5 Model quality [i](#)

### 5.1 Standard geometry [i](#)

The Z score for a bond length (or angle) is the number of standard deviations the observed value is removed from the expected value. A bond length (or angle) with  $|Z| > 5$  is considered an outlier worth inspection. RMSZ is the root-mean-square of all Z scores of the bond lengths (or angles).

Mol	Chain	Bond lengths		Bond angles	
		RMSZ	# Z  >5	RMSZ	# Z  >5
1	A	0.39	0/8220	0.51	0/11181
1	B	0.39	0/8274	0.51	1/11258 (0.0%)
1	C	0.40	0/8219	0.51	1/11183 (0.0%)
All	All	0.39	0/24713	0.51	2/33622 (0.0%)

Chiral center outliers are detected by calculating the chiral volume of a chiral center and verifying if the center is modelled as a planar moiety or with the opposite hand. A planarity outlier is detected by checking planarity of atoms in a peptide group, atoms in a mainchain group or atoms of a sidechain that are expected to be planar.

Mol	Chain	#Chirality outliers	#Planarity outliers
1	B	0	1

There are no bond length outliers.

All (2) bond angle outliers are listed below:

Mol	Chain	Res	Type	Atoms	Z	Observed(°)	Ideal(°)
1	B	83	VAL	C-N-CA	6.89	138.94	121.70
1	C	559	PHE	C-N-CA	-5.10	108.96	121.70

There are no chirality outliers.

All (1) planarity outliers are listed below:

Mol	Chain	Res	Type	Group
1	B	329	PHE	Peptide

### 5.2 Too-close contacts [i](#)

In the following table, the Non-H and H(model) columns list the number of non-hydrogen atoms and hydrogen atoms in the chain respectively. The H(added) column lists the number of hydrogen atoms added and optimized by MolProbity. The Clashes column lists the number of clashes within

the asymmetric unit, whereas Symm-Clashes lists symmetry-related clashes.

Mol	Chain	Non-H	H(model)	H(added)	Clashes	Symm-Clashes
1	A	8039	0	7854	374	0
1	B	8091	0	7907	366	0
1	C	8038	0	7859	357	0
All	All	24168	0	23620	1068	0

The all-atom clashscore is defined as the number of clashes found per 1000 atoms (including hydrogen atoms). The all-atom clashscore for this structure is 22.

All (1068) close contacts within the same asymmetric unit are listed below, sorted by their clash magnitude.

Atom-1	Atom-2	Interatomic distance (Å)	Clash overlap (Å)
1:C:825:LYS:HE2	1:C:942:ALA:CB	1.57	1.33
1:C:825:LYS:CE	1:C:942:ALA:HB2	1.70	1.20
1:C:825:LYS:CE	1:C:942:ALA:CB	2.26	1.11
1:C:945:LEU:HD23	1:C:945:LEU:H	1.21	1.04
1:C:379:CYS:HA	1:C:432:CYS:HB3	1.40	1.04
1:A:379:CYS:HA	1:A:432:CYS:HB3	1.39	1.01
1:C:86:PHE:H	1:C:237:ARG:HA	1.31	0.96
1:B:86:PHE:H	1:B:237:ARG:HA	1.34	0.92
1:C:213:VAL:HG13	1:C:214:ARG:HG2	1.53	0.90
1:C:825:LYS:HE2	1:C:942:ALA:HB2	0.88	0.88
1:B:65:PHE:HB3	1:B:78:ARG:HH22	1.39	0.87
1:B:133:PHE:HA	1:B:160:TYR:HB3	1.60	0.83
1:B:67:ALA:HB2	1:B:78:ARG:HE	1.45	0.82
1:B:81:ASN:ND2	1:B:240:THR:O	2.13	0.81
1:B:363:ALA:HB2	1:B:524:VAL:HG12	1.60	0.81
1:C:109:THR:O	1:C:237:ARG:NH2	2.14	0.81
1:C:825:LYS:CE	1:C:942:ALA:HB1	2.07	0.81
1:B:452:LEU:HB3	1:B:492:LEU:HB3	1.60	0.81
1:B:403:ARG:HE	1:B:406:GLU:HG3	1.44	0.81
1:A:116:SER:HB2	1:A:135:PHE:HZ	1.47	0.79
1:B:142:GLY:HA2	1:B:155:SER:H	1.47	0.79
1:B:402:ILE:HD13	1:B:410:ILE:HG13	1.66	0.78
1:B:738:CYS:SG	1:B:739:THR:N	2.58	0.77
1:B:965:GLN:HE21	1:C:758:SER:HB2	1.48	0.76
1:C:825:LYS:NZ	1:C:942:ALA:CB	2.47	0.76
1:C:367:VAL:HG22	1:C:371:SER:HB3	1.66	0.76
1:A:170:TYR:O	1:A:173:GLN:NE2	2.17	0.75
1:A:403:ARG:HG2	1:A:497:PHE:HE1	1.51	0.75
1:A:94:SER:HB3	1:A:190:ARG:HB2	1.68	0.75

*Continued on next page...*

*Continued from previous page...*

Atom-1	Atom-2	Interatomic distance (Å)	Clash overlap (Å)
1:C:792:PRO:O	1:C:795:LYS:NZ	2.20	0.75
1:C:825:LYS:NZ	1:C:942:ALA:HA	2.02	0.75
1:A:971:GLY:H	1:B:755:GLN:HE21	1.35	0.74
1:C:945:LEU:HD23	1:C:945:LEU:N	2.01	0.74
1:C:945:LEU:H	1:C:945:LEU:CD2	1.98	0.74
1:C:816:SER:N	1:C:819:GLU:OE1	2.20	0.74
1:A:439:ASN:HB2	1:A:507:PRO:HD2	1.69	0.74
1:A:1092:GLU:O	1:A:1107:ARG:NH2	2.20	0.73
1:A:116:SER:HB2	1:A:135:PHE:CZ	2.22	0.73
1:C:676:THR:OG1	1:C:690:GLN:NE2	2.21	0.73
1:C:104:TRP:HB2	1:C:119:ILE:HB	1.71	0.73
1:B:280:ASN:ND2	1:B:284:THR:OG1	2.22	0.73
1:B:578:ASP:OD2	1:B:581:THR:N	2.22	0.73
1:B:34:ARG:NH1	1:B:219:GLY:O	2.22	0.72
1:A:617:CYS:SG	1:A:618:THR:N	2.63	0.71
1:C:139:PRO:HB3	1:C:158:ARG:HB2	1.72	0.71
1:C:480:CYS:HB3	1:C:483:VAL:HG22	1.71	0.71
1:B:392:PHE:HB2	1:B:524:VAL:HB	1.71	0.71
1:C:112:SER:HA	1:C:135:PHE:H	1.55	0.71
1:B:642:VAL:HG12	1:B:651:ILE:HG12	1.71	0.71
1:A:819:GLU:OE2	1:A:1055:SER:N	2.23	0.71
1:B:177:MET:SD	1:B:190:ARG:NH1	2.64	0.71
1:B:346:ARG:HH22	1:B:401:VAL:HG22	1.55	0.71
1:C:1091:ARG:NH1	1:C:1118:ASP:O	2.24	0.71
1:B:393:THR:OG1	1:B:516:GLU:O	2.09	0.71
1:C:353:TRP:O	1:C:466:ARG:NH1	2.25	0.70
1:C:280:ASN:ND2	1:C:284:THR:OG1	2.24	0.70
1:C:337:PRO:HB2	1:C:340:GLU:HG2	1.73	0.70
1:A:133:PHE:HD1	1:A:160:TYR:HB3	1.56	0.70
1:A:102:ARG:N	1:A:241:LEU:O	2.25	0.70
1:A:826:VAL:HG11	1:A:1057:PRO:HG3	1.74	0.70
1:B:120:VAL:HG21	1:B:141:LEU:HD13	1.74	0.70
1:A:126:VAL:HG22	1:A:177:MET:H	1.55	0.70
1:B:331:ASN:HB3	1:B:579:PRO:HB2	1.73	0.69
1:C:905:ARG:NH1	1:C:1049:LEU:O	2.23	0.69
1:C:199:GLY:HA3	1:C:232:GLY:HA2	1.75	0.69
1:C:731:MET:N	1:C:774:GLN:OE1	2.24	0.69
1:A:426:PRO:HD2	1:A:429:PHE:HB2	1.74	0.69
1:B:391:CYS:HA	1:B:525:CYS:HA	1.75	0.69
1:B:592:PHE:HE1	1:B:615:VAL:HG22	1.57	0.69
1:C:825:LYS:NZ	1:C:938:LEU:O	2.26	0.69

*Continued on next page...*

*Continued from previous page...*

Atom-1	Atom-2	Interatomic distance (Å)	Clash overlap (Å)
1:B:125:ASN:ND2	1:B:172:SER:O	2.26	0.68
1:A:128:ILE:H	1:A:171:VAL:HG12	1.57	0.68
1:B:731:MET:N	1:B:774:GLN:OE1	2.25	0.68
1:A:66:HIS:O	1:A:78:ARG:NE	2.26	0.68
1:A:1135:ASN:OD1	1:A:1136:THR:N	2.27	0.68
1:B:134:GLN:H	1:B:160:TYR:HA	1.58	0.68
1:B:1086:LYS:HA	1:B:1125:ASN:HA	1.76	0.68
1:A:156:GLU:OE2	1:A:158:ARG:NE	2.23	0.68
1:B:347:PHE:HB2	1:B:400:PHE:HA	1.74	0.68
1:A:108:THR:O	1:A:236:THR:OG1	2.10	0.68
1:B:439:ASN:HB3	1:B:506:GLN:HG2	1.76	0.68
1:A:244:LEU:HG	1:A:246:ARG:HG3	1.75	0.67
1:B:106:PHE:O	1:B:116:SER:OG	2.12	0.67
1:B:121:ASN:HB3	1:B:177:MET:HB3	1.76	0.67
1:C:1010:GLN:HB3	1:C:1014:ARG:HH12	1.60	0.67
1:B:23:GLN:NE2	1:B:77:LYS:O	2.27	0.67
1:B:53:ASP:OD1	1:B:54:LEU:N	2.26	0.67
1:C:1028:LYS:NZ	1:C:1042:PHE:O	2.28	0.67
1:A:101:ILE:HA	1:A:242:LEU:HA	1.75	0.67
1:A:976:VAL:HG12	1:A:979:ASP:H	1.58	0.67
1:C:560:LEU:O	1:C:562:PHE:N	2.26	0.67
1:A:401:VAL:HG22	1:A:509:ARG:HA	1.76	0.67
1:B:324:GLU:OE1	1:B:537:LYS:NZ	2.26	0.67
1:B:81:ASN:HB2	1:B:239:GLN:HB2	1.77	0.67
1:C:299:THR:HG22	1:C:597:VAL:HG11	1.76	0.67
1:A:901:GLN:HE21	1:A:905:ARG:HE	1.43	0.66
1:B:1135:ASN:OD1	1:B:1136:THR:N	2.26	0.66
1:B:400:PHE:HE2	1:B:402:ILE:HD11	1.60	0.66
1:C:228:ASP:OD1	1:C:229:LEU:N	2.27	0.66
1:C:328:ARG:NH1	1:C:531:THR:O	2.28	0.66
1:C:457:ARG:NH1	1:C:460:ASN:O	2.28	0.66
1:C:67:ALA:HA	1:C:78:ARG:HG2	1.78	0.66
1:C:121:ASN:ND2	1:C:177:MET:O	2.28	0.66
1:A:352:ALA:HA	1:A:466:ARG:HD3	1.78	0.66
1:B:280:ASN:HD21	1:B:284:THR:HG1	1.41	0.66
1:A:141:LEU:HB3	1:A:154:GLU:HA	1.78	0.66
1:B:984:LEU:HB3	1:B:989:ALA:HB2	1.78	0.66
1:C:67:ALA:HB2	1:C:265:TYR:HD1	1.60	0.65
1:C:924:ALA:O	1:C:928:ASN:ND2	2.29	0.65
1:C:290:ASP:OD1	1:C:291:CYS:N	2.28	0.65
1:A:949:GLN:HG3	1:A:953:ASN:HD21	1.60	0.65

*Continued on next page...*

Continued from previous page...

Atom-1	Atom-2	Interatomic distance (Å)	Clash overlap (Å)
1:B:922:LEU:HD11	1:B:926:GLN:HE21	1.61	0.65
1:B:403:ARG:HD2	1:B:405:ASP:H	1.62	0.65
1:A:214:ARG:NH2	1:A:216:LEU:O	2.30	0.65
1:A:578:ASP:OD2	1:A:581:THR:N	2.23	0.65
1:B:189:LEU:HD22	1:B:210:ILE:HD13	1.79	0.65
1:C:395:VAL:HA	1:C:515:PHE:HB3	1.79	0.65
1:A:1031:GLU:OE2	1:C:1039:ARG:NH2	2.31	0.64
1:A:445:VAL:HA	1:A:499:PRO:HD2	1.79	0.64
1:A:1106:GLN:NE2	1:A:1111:GLU:OE1	2.31	0.64
1:B:746:SER:OG	1:B:748:GLU:OE1	2.14	0.64
1:C:100:ILE:O	1:C:243:ALA:N	2.30	0.64
1:C:974:SER:HB2	1:C:980:ILE:HD11	1.79	0.64
1:A:774:GLN:HA	1:A:777:ASN:HD22	1.61	0.64
1:B:132:GLU:HB2	1:B:165:ASN:H	1.61	0.64
1:C:1135:ASN:OD1	1:C:1136:THR:N	2.30	0.64
1:A:80:ASP:OD1	1:A:260:ALA:N	2.30	0.64
1:A:403:ARG:NH1	1:A:405:ASP:OD2	2.31	0.64
1:B:661:GLU:O	1:B:695:TYR:OH	2.15	0.64
1:B:473:TYR:HB3	1:B:489:TYR:HB3	1.79	0.64
1:A:280:ASN:ND2	1:A:284:THR:OG1	2.29	0.64
1:B:29:THR:OG1	1:B:215:ASP:OD2	2.15	0.64
1:C:132:GLU:OE1	1:C:164:ASN:ND2	2.31	0.64
1:C:189:LEU:HD22	1:C:210:ILE:HD13	1.80	0.64
1:B:290:ASP:OD1	1:B:291:CYS:N	2.31	0.63
1:A:94:SER:OG	1:A:188:ASN:O	2.16	0.63
1:B:676:THR:OG1	1:B:690:GLN:OE1	2.14	0.63
1:C:936:ASP:O	1:C:940:SER:N	2.30	0.63
1:A:108:THR:OG1	1:A:234:ASN:O	2.16	0.63
1:A:29:THR:HG23	1:A:62:VAL:HG13	1.80	0.63
1:A:475:ALA:HB3	1:A:487:ASN:HB3	1.81	0.63
1:A:442:ASP:OD2	1:A:509:ARG:NH2	2.31	0.63
1:B:418:ILE:HG23	1:B:422:ASN:HD22	1.62	0.63
1:C:69:HIS:HD2	1:C:77:LYS:HA	1.63	0.63
1:B:316:SER:OG	1:B:317:ASN:N	2.30	0.63
1:B:435:ALA:HB1	1:B:508:TYR:HB3	1.80	0.63
1:C:101:ILE:HA	1:C:242:LEU:HA	1.79	0.63
1:C:421:TYR:HB3	1:C:454:ARG:HD3	1.81	0.63
1:C:521:PRO:HG2	1:C:564:GLN:HE21	1.62	0.63
1:A:345:THR:O	1:A:509:ARG:NH2	2.26	0.62
1:A:493:GLN:NE2	1:A:494:SER:O	2.31	0.62
1:B:563:GLN:H	1:B:577:ARG:HH21	1.44	0.62

Continued on next page...



*Continued from previous page...*

Atom-1	Atom-2	Interatomic distance (Å)	Clash overlap (Å)
1:B:556:ASN:O	1:B:557:LYS:NZ	2.26	0.62
1:C:125:ASN:ND2	1:C:172:SER:OG	2.33	0.62
1:C:280:ASN:OD1	1:C:284:THR:N	2.25	0.62
1:A:1125:ASN:ND2	1:A:1127:ASP:OD1	2.33	0.62
1:B:229:LEU:HD12	1:B:230:PRO:HD2	1.81	0.62
1:C:102:ARG:HE	1:C:243:ALA:HB2	1.64	0.62
1:B:112:SER:HA	1:B:135:PHE:N	2.15	0.62
1:C:350:VAL:HG12	1:C:402:ILE:HG22	1.80	0.62
1:C:825:LYS:HZ1	1:C:942:ALA:HA	1.63	0.62
1:A:134:GLN:H	1:A:160:TYR:HA	1.64	0.62
1:C:273:ARG:NH2	1:C:290:ASP:OD2	2.32	0.62
1:A:81:ASN:ND2	1:A:240:THR:O	2.33	0.61
1:A:300:LYS:NZ	1:A:306:PHE:O	2.30	0.61
1:B:65:PHE:HB3	1:B:78:ARG:NH2	2.14	0.61
1:C:364:ASP:HA	1:C:388:ASN:HD21	1.65	0.61
1:C:1028:LYS:O	1:C:1032:CYS:HB2	2.00	0.61
1:A:439:ASN:O	1:A:443:SER:OG	2.16	0.61
1:B:1116:THR:OG1	1:B:1118:ASP:OD1	2.17	0.61
1:A:516:GLU:HB3	1:A:519:HIS:CE1	2.35	0.61
1:A:922:LEU:HG	1:A:926:GLN:HE21	1.65	0.61
1:C:79:PHE:HB2	1:C:260:ALA:HB1	1.81	0.61
1:A:96:GLU:OE1	1:A:101:ILE:N	2.25	0.61
1:B:713:ALA:HB3	1:C:894:LEU:HB3	1.81	0.61
1:C:379:CYS:CA	1:C:432:CYS:HB3	2.25	0.61
1:C:36:VAL:HG23	1:C:222:ALA:HA	1.83	0.61
1:A:411:ALA:HB3	1:A:414:GLN:HB2	1.82	0.61
1:A:904:TYR:CZ	1:C:1107:ARG:HD3	2.36	0.61
1:C:976:VAL:HG12	1:C:979:ASP:H	1.64	0.60
1:B:660:TYR:H	1:B:695:TYR:HE2	1.48	0.60
1:A:353:TRP:O	1:A:466:ARG:NE	2.31	0.60
1:A:458:LYS:NZ	1:A:474:GLN:O	2.34	0.60
1:B:128:ILE:HB	1:B:170:TYR:HB3	1.83	0.60
1:C:334:ASN:HB2	1:C:361:CYS:HA	1.84	0.60
1:C:100:ILE:HD13	1:C:102:ARG:HH21	1.66	0.60
1:A:904:TYR:CE2	1:C:1107:ARG:HD3	2.35	0.60
1:B:392:PHE:N	1:B:524:VAL:O	2.33	0.60
1:C:811:LYS:NZ	1:C:813:SER:O	2.33	0.60
1:A:28:TYR:HB3	1:A:61:ASN:OD1	2.02	0.60
1:A:403:ARG:HG2	1:A:497:PHE:CE1	2.36	0.60
1:C:825:LYS:NZ	1:C:942:ALA:CA	2.65	0.60
1:A:1043:CYS:HB3	1:A:1048:HIS:ND1	2.17	0.60

*Continued on next page...*

*Continued from previous page...*

Atom-1	Atom-2	Interatomic distance (Å)	Clash overlap (Å)
1:A:675:GLN:HA	1:A:690:GLN:HE22	1.67	0.60
1:C:175:PHE:HE2	1:C:190:ARG:HH22	1.47	0.60
1:A:974:SER:OG	1:A:975:SER:N	2.34	0.60
1:B:79:PHE:HE1	1:B:242:LEU:H	1.50	0.60
1:A:135:PHE:CD1	1:A:159:VAL:HA	2.37	0.60
1:B:529:LYS:NZ	1:B:530:SER:O	2.34	0.60
1:B:568:ASP:OD1	1:B:572:THR:N	2.33	0.60
1:C:437:ASN:ND2	1:C:506:GLN:OE1	2.25	0.60
1:A:914:ASN:HA	1:C:1089:PHE:HE2	1.67	0.59
1:B:212:LEU:HD21	1:B:214:ARG:HH11	1.67	0.59
1:B:574:ASP:OD1	1:B:575:ALA:N	2.35	0.59
1:B:950:ASP:HA	1:B:953:ASN:HD22	1.67	0.59
1:C:107:GLY:HA2	1:C:235:ILE:HG12	1.84	0.59
1:A:546:LEU:HD21	1:A:573:THR:HG21	1.83	0.59
1:C:67:ALA:HB2	1:C:265:TYR:CD1	2.36	0.59
1:C:364:ASP:OD1	1:C:365:TYR:N	2.35	0.59
1:A:190:ARG:HB3	1:A:192:PHE:CZ	2.37	0.59
1:A:207:HIS:O	1:A:207:HIS:ND1	2.35	0.59
1:B:102:ARG:NH1	1:B:141:LEU:O	2.33	0.59
1:C:68:ILE:HA	1:C:262:ALA:HA	1.84	0.59
1:A:403:ARG:HD2	1:A:505:TYR:HA	1.83	0.59
1:B:615:VAL:HG12	1:B:616:ASN:O	2.03	0.59
1:C:69:HIS:ND1	1:C:260:ALA:HB3	2.17	0.59
1:B:377:PHE:H	1:B:378:LYS:HE2	1.67	0.59
1:C:105:ILE:HG13	1:C:110:LEU:HD23	1.84	0.59
1:A:328:ARG:NH1	1:A:531:THR:O	2.36	0.59
1:A:455:LEU:N	1:A:491:PRO:O	2.35	0.59
1:A:1043:CYS:HB3	1:A:1048:HIS:HD1	1.68	0.59
1:B:106:PHE:HB2	1:B:117:LEU:HB2	1.84	0.59
1:C:125:ASN:HB3	1:C:175:PHE:H	1.67	0.59
1:A:281:GLU:OE1	1:A:281:GLU:N	2.32	0.59
1:B:108:THR:O	1:B:236:THR:OG1	2.16	0.59
1:C:736:VAL:HG22	1:C:858:LEU:HD13	1.85	0.59
1:B:40:ASP:OD1	1:B:41:LYS:N	2.25	0.58
1:B:357:ARG:HD3	1:B:394:ASN:HD22	1.68	0.58
1:B:578:ASP:HB3	1:B:583:GLU:H	1.68	0.58
1:C:127:VAL:HG22	1:C:171:VAL:HG23	1.85	0.58
1:C:809:PRO:O	1:C:814:LYS:NZ	2.35	0.58
1:B:126:VAL:HG23	1:B:175:PHE:HB3	1.85	0.58
1:A:31:SER:OG	1:A:60:SER:N	2.36	0.58
1:A:340:GLU:OE2	1:A:356:LYS:NZ	2.35	0.58

*Continued on next page...*

*Continued from previous page...*

Atom-1	Atom-2	Interatomic distance (Å)	Clash overlap (Å)
1:B:406:GLU:HA	1:B:409:GLN:HB2	1.85	0.58
1:C:170:TYR:CZ	1:C:172:SER:HA	2.38	0.58
1:A:127:VAL:HA	1:A:171:VAL:HB	1.86	0.58
1:A:1028:LYS:NZ	1:A:1042:PHE:O	2.36	0.58
1:B:100:ILE:HG22	1:B:242:LEU:HD11	1.86	0.58
1:A:224:GLU:N	1:A:224:GLU:OE1	2.33	0.58
1:B:578:ASP:N	1:B:583:GLU:O	2.27	0.58
1:C:454:ARG:NH1	1:C:469:SER:OG	2.36	0.58
1:B:804:GLN:O	1:B:816:SER:OG	2.21	0.58
1:C:215:ASP:HA	1:C:266:TYR:OH	2.03	0.58
1:A:1100:THR:OG1	1:A:1101:HIS:ND1	2.29	0.58
1:B:64:TRP:CD2	1:B:266:TYR:HE1	2.21	0.58
1:B:163:ALA:HB1	1:B:166:CYS:HB2	1.85	0.58
1:C:377:PHE:H	1:C:378:LYS:HE2	1.69	0.58
1:C:738:CYS:SG	1:C:739:THR:N	2.77	0.58
1:A:131:CYS:SG	1:A:167:THR:N	2.77	0.58
1:C:441:LEU:HD22	1:C:509:ARG:HH21	1.68	0.58
1:C:906:PHE:HE1	1:C:1049:LEU:HD11	1.68	0.58
1:A:195:LYS:HD3	1:A:204:TYR:HE2	1.69	0.57
1:B:451:TYR:HB2	1:B:495:TYR:CD2	2.38	0.57
1:C:67:ALA:H	1:C:264:ALA:HA	1.69	0.57
1:A:395:VAL:HA	1:A:515:PHE:HB3	1.86	0.57
1:C:403:ARG:HB2	1:C:497:PHE:HE1	1.68	0.57
1:A:212:LEU:HD13	1:A:217:PRO:HD3	1.86	0.57
1:A:438:SER:HB3	1:A:509:ARG:HG3	1.85	0.57
1:B:346:ARG:NE	1:B:347:PHE:O	2.37	0.57
1:B:411:ALA:HB3	1:B:414:GLN:HG2	1.85	0.57
1:C:26:PRO:HA	1:C:78:ARG:HH22	1.68	0.57
1:C:83:VAL:HB	1:C:237:ARG:HD2	1.85	0.57
1:C:189:LEU:HB2	1:C:210:ILE:HG12	1.85	0.57
1:A:105:ILE:HD11	1:A:239:GLN:HB3	1.86	0.57
1:A:758:SER:HB3	1:C:965:GLN:HE21	1.70	0.57
1:A:191:GLU:HG3	1:A:223:LEU:HD13	1.85	0.57
1:B:748:GLU:H	1:B:748:GLU:CD	2.08	0.57
1:A:360:ASN:H	1:A:523:THR:HG23	1.69	0.57
1:C:879:ALA:O	1:C:883:THR:OG1	2.18	0.57
1:B:1072:GLU:N	1:B:1072:GLU:OE1	2.38	0.57
1:A:206:LYS:HZ1	1:A:221:SER:HB2	1.70	0.57
1:A:379:CYS:CA	1:A:432:CYS:HB3	2.25	0.57
1:A:737:ASP:OD1	1:A:737:ASP:N	2.36	0.57
1:B:77:LYS:HZ3	1:B:259:THR:N	2.02	0.56

*Continued on next page...*

*Continued from previous page...*

Atom-1	Atom-2	Interatomic distance (Å)	Clash overlap (Å)
1:B:93:ALA:HB3	1:B:266:TYR:HB2	1.87	0.56
1:A:738:CYS:SG	1:A:739:THR:N	2.77	0.56
1:A:1077:THR:OG1	1:A:1078:ALA:N	2.38	0.56
1:B:379:CYS:HA	1:B:432:CYS:HA	1.88	0.56
1:B:563:GLN:NE2	1:C:42:VAL:O	2.38	0.56
1:B:748:GLU:OE1	1:B:748:GLU:N	2.36	0.56
1:A:40:ASP:OD1	1:A:41:LYS:N	2.36	0.56
1:A:189:LEU:HG	1:A:191:GLU:HB3	1.85	0.56
1:A:661:GLU:N	1:A:661:GLU:OE1	2.38	0.56
1:B:365:TYR:H	1:B:388:ASN:HD22	1.53	0.56
1:C:168:PHE:CZ	1:C:170:TYR:HB2	2.40	0.56
1:C:287:ASP:OD1	1:C:288:ALA:N	2.38	0.56
1:C:474:GLN:NE2	1:C:477:SER:O	2.38	0.56
1:B:409:GLN:HB3	1:B:418:ILE:HB	1.85	0.56
1:A:1097:SER:HB2	1:A:1102:TRP:CD2	2.41	0.56
1:B:879:ALA:O	1:B:883:THR:OG1	2.19	0.56
1:A:100:ILE:O	1:A:243:ALA:N	2.39	0.56
1:B:309:GLU:N	1:B:309:GLU:OE1	2.38	0.56
1:B:393:THR:HG22	1:B:522:ALA:HA	1.88	0.56
1:C:1083:HIS:HB2	1:C:1137:VAL:HG23	1.86	0.56
1:C:110:LEU:HD13	1:C:237:ARG:HE	1.69	0.56
1:C:208:THR:HG23	1:C:210:ILE:HG23	1.87	0.56
1:A:917:TYR:HB3	1:C:1129:VAL:HG23	1.87	0.56
1:B:646:ARG:O	1:B:646:ARG:NH1	2.39	0.56
1:C:908:GLY:HA3	1:C:1036:GLN:HE22	1.71	0.56
1:C:816:SER:OG	1:C:817:PHE:N	2.39	0.55
1:B:716:THR:N	1:B:1071:GLN:O	2.32	0.55
1:C:53:ASP:HB2	1:C:55:PHE:CZ	2.41	0.55
1:A:386:LYS:NZ	1:B:982:SER:O	2.23	0.55
1:B:274:THR:HG23	1:B:291:CYS:HB2	1.88	0.55
1:B:736:VAL:HG22	1:B:858:LEU:HG	1.87	0.55
1:C:69:HIS:CD2	1:C:77:LYS:HA	2.41	0.55
1:C:106:PHE:HB3	1:C:235:ILE:HD13	1.88	0.55
1:C:160:TYR:CE2	1:C:163:ALA:HA	2.41	0.55
1:B:356:LYS:O	1:B:397:ALA:N	2.38	0.55
1:C:67:ALA:HB3	1:C:263:ALA:HB3	1.89	0.55
1:C:86:PHE:HB2	1:C:238:PHE:HB3	1.89	0.55
1:C:391:CYS:HA	1:C:525:CYS:CB	2.37	0.55
1:C:1093:GLY:O	1:C:1107:ARG:NH1	2.39	0.55
1:A:192:PHE:HB3	1:A:194:PHE:CZ	2.41	0.55
1:A:365:TYR:OH	1:A:385:THR:O	2.23	0.55

*Continued on next page...*

*Continued from previous page...*

Atom-1	Atom-2	Interatomic distance (Å)	Clash overlap (Å)
1:A:646:ARG:O	1:A:646:ARG:NE	2.38	0.55
1:B:190:ARG:HB3	1:B:192:PHE:CZ	2.41	0.55
1:C:100:ILE:HG22	1:C:242:LEU:HB3	1.89	0.55
1:A:191:GLU:HG3	1:A:223:LEU:HD22	1.88	0.55
1:A:215:ASP:OD1	1:A:216:LEU:N	2.40	0.55
1:B:290:ASP:OD1	1:B:292:ALA:N	2.33	0.55
1:C:31:SER:OG	1:C:60:SER:N	2.39	0.55
1:C:410:ILE:HA	1:C:425:LEU:HD11	1.89	0.55
1:A:90:VAL:HG13	1:A:267:VAL:HG23	1.87	0.55
1:A:990:GLU:HA	1:A:993:ILE:HD12	1.87	0.55
1:C:52:GLN:HB2	1:C:274:THR:HG23	1.87	0.55
1:C:825:LYS:HD2	1:C:942:ALA:HB1	1.89	0.55
1:A:317:ASN:HA	1:A:594:GLY:HA2	1.89	0.55
1:A:365:TYR:HE2	1:A:388:ASN:H	1.54	0.55
1:B:327:VAL:HG23	1:B:542:ASN:HD22	1.71	0.55
1:B:395:VAL:HG23	1:B:515:PHE:HB3	1.88	0.55
1:C:825:LYS:CD	1:C:942:ALA:HB1	2.36	0.55
1:A:112:SER:HA	1:A:135:PHE:N	2.22	0.55
1:A:713:ALA:HB3	1:B:894:LEU:HB3	1.87	0.55
1:A:329:PHE:CE2	1:A:528:LYS:HB2	2.41	0.55
1:C:975:SER:OG	1:C:975:SER:O	2.24	0.55
1:B:424:LYS:HB3	1:B:461:LEU:HB2	1.88	0.54
1:B:974:SER:OG	1:B:975:SER:N	2.40	0.54
1:C:941:THR:O	1:C:941:THR:HG23	2.07	0.54
1:C:1000:ARG:O	1:C:1003:SER:OG	2.22	0.54
1:A:99:ASN:O	1:A:102:ARG:NH1	2.40	0.54
1:A:347:PHE:CE2	1:A:509:ARG:HB3	2.43	0.54
1:B:363:ALA:N	1:B:525:CYS:O	2.40	0.54
1:B:1097:SER:HB3	1:B:1102:TRP:CE3	2.42	0.54
1:C:560:LEU:HB2	1:C:562:PHE:HE1	1.72	0.54
1:A:126:VAL:HG23	1:A:175:PHE:O	2.08	0.54
1:A:490:PHE:HD2	1:A:492:LEU:HB2	1.73	0.54
1:A:914:ASN:OD1	1:A:914:ASN:N	2.40	0.54
1:B:1097:SER:HB3	1:B:1102:TRP:CD2	2.41	0.54
1:C:140:PHE:HD2	1:C:141:LEU:HG	1.71	0.54
1:B:1082:CYS:HB2	1:B:1132:ILE:HD11	1.88	0.54
1:A:242:LEU:HD21	1:A:263:ALA:HB3	1.90	0.54
1:A:328:ARG:HG3	1:A:543:PHE:HE1	1.72	0.54
1:A:478:THR:OG1	1:A:487:ASN:OD1	2.18	0.54
1:A:433:VAL:HG22	1:A:512:VAL:HG12	1.90	0.54
1:B:23:GLN:NE2	1:B:80:ASP:OD1	2.40	0.54

*Continued on next page...*

*Continued from previous page...*

Atom-1	Atom-2	Interatomic distance (Å)	Clash overlap (Å)
1:B:95:THR:OG1	1:B:264:ALA:O	2.19	0.54
1:C:24:LEU:HB3	1:C:78:ARG:HD2	1.89	0.54
1:B:1083:HIS:CD2	1:B:1136:THR:HA	2.43	0.54
1:C:103:GLY:HA3	1:C:241:LEU:HB3	1.89	0.54
1:A:83:VAL:HG22	1:A:237:ARG:HB3	1.89	0.54
1:A:115:GLN:HG2	1:A:233:ILE:HD13	1.90	0.54
1:A:334:ASN:ND2	1:A:360:ASN:OD1	2.41	0.54
1:A:365:TYR:CD2	1:A:387:LEU:HB2	2.42	0.54
1:A:988:GLU:OE1	1:A:988:GLU:N	2.41	0.54
1:C:665:PRO:HA	1:C:671:CYS:HB3	1.90	0.54
1:A:95:THR:OG1	1:A:264:ALA:O	2.23	0.54
1:C:320:VAL:HB	1:C:590:CYS:HB2	1.89	0.54
1:C:590:CYS:HA	1:C:592:PHE:CZ	2.43	0.54
1:B:215:ASP:OD1	1:B:216:LEU:N	2.41	0.53
1:C:560:LEU:HB2	1:C:562:PHE:CE1	2.43	0.53
1:A:191:GLU:OE1	1:A:191:GLU:N	2.38	0.53
1:A:675:GLN:OE1	1:A:690:GLN:NE2	2.41	0.53
1:B:102:ARG:HB2	1:B:243:ALA:HB2	1.90	0.53
1:B:734:THR:OG1	1:B:735:SER:N	2.41	0.53
1:A:387:LEU:HD12	1:A:392:PHE:CZ	2.43	0.53
1:C:24:LEU:HD23	1:C:66:HIS:HB2	1.89	0.53
1:C:81:ASN:O	1:C:239:GLN:NE2	2.41	0.53
1:C:296:LEU:O	1:C:299:THR:OG1	2.22	0.53
1:C:819:GLU:HG3	1:C:1054:GLN:HE21	1.73	0.53
1:A:402:ILE:HG21	1:A:418:ILE:HD13	1.91	0.53
1:B:567:ARG:NH1	1:B:571:ASP:OD1	2.41	0.53
1:B:691:SER:OG	1:B:692:ILE:N	2.41	0.53
1:C:88:ASP:N	1:C:88:ASP:OD1	2.42	0.53
1:C:605:SER:OG	1:C:606:ASN:N	2.41	0.53
1:C:661:GLU:OE1	1:C:661:GLU:N	2.42	0.53
1:A:108:THR:HA	1:A:236:THR:H	1.73	0.53
1:B:116:SER:OG	1:B:117:LEU:N	2.40	0.53
1:C:435:ALA:HB2	1:C:510:VAL:HG23	1.90	0.53
1:C:474:GLN:NE2	1:C:478:THR:O	2.41	0.53
1:A:351:TYR:HE1	1:A:452:LEU:HB2	1.74	0.53
1:A:990:GLU:N	1:A:990:GLU:OE1	2.42	0.53
1:B:110:LEU:HA	1:B:135:PHE:CD2	2.44	0.53
1:A:418:ILE:HA	1:A:422:ASN:HB2	1.91	0.53
1:A:177:MET:O	1:A:190:ARG:NH1	2.42	0.53
1:A:1019:ARG:HH21	1:A:1023:ASN:HD21	1.57	0.53
1:B:330:PRO:HD2	1:B:530:SER:HB2	1.91	0.53

*Continued on next page...*

*Continued from previous page...*

Atom-1	Atom-2	Interatomic distance (Å)	Clash overlap (Å)
1:B:384:PRO:HA	1:B:387:LEU:HD13	1.90	0.53
1:C:442:ASP:HB3	1:C:451:TYR:HE2	1.74	0.53
1:A:208:THR:O	1:A:210:ILE:N	2.40	0.52
1:A:365:TYR:HD2	1:A:387:LEU:HB2	1.74	0.52
1:A:770:ILE:HD11	1:A:1012:LEU:HA	1.91	0.52
1:B:43:PHE:CE1	1:B:283:GLY:HA3	2.44	0.52
1:B:112:SER:HA	1:B:135:PHE:H	1.75	0.52
1:B:131:CYS:HA	1:B:166:CYS:HA	1.91	0.52
1:B:134:GLN:N	1:B:159:VAL:O	2.42	0.52
1:B:353:TRP:O	1:B:466:ARG:NE	2.41	0.52
1:C:97:LYS:HD3	1:C:186:PHE:HA	1.91	0.52
1:A:191:GLU:O	1:A:193:VAL:N	2.42	0.52
1:A:790:LYS:HB3	1:C:704:SER:OG	2.10	0.52
1:A:1142:GLN:HB3	1:A:1143:PRO:HD3	1.90	0.52
1:B:344:ALA:HB3	1:B:347:PHE:CE1	2.43	0.52
1:B:518:LEU:O	1:B:519:HIS:ND1	2.43	0.52
1:A:191:GLU:O	1:A:191:GLU:HG2	2.09	0.52
1:A:347:PHE:HE2	1:A:509:ARG:HB3	1.74	0.52
1:A:770:ILE:HD11	1:A:1012:LEU:HD23	1.92	0.52
1:B:29:THR:O	1:B:62:VAL:N	2.42	0.52
1:B:133:PHE:CD1	1:B:159:VAL:HG12	2.45	0.52
1:A:62:VAL:HG23	1:A:267:VAL:O	2.08	0.52
1:A:394:ASN:H	1:A:524:VAL:HG21	1.75	0.52
1:A:485:GLY:N	1:A:488:CYS:SG	2.83	0.52
1:B:294:ASP:O	1:B:297:SER:N	2.43	0.52
1:C:197:ILE:O	1:C:200:TYR:N	2.43	0.52
1:C:673:SER:OG	1:C:674:TYR:N	2.41	0.52
1:A:115:GLN:HA	1:A:133:PHE:H	1.73	0.52
1:A:142:GLY:O	1:A:155:SER:OG	2.26	0.52
1:A:418:ILE:O	1:A:423:TYR:N	2.38	0.52
1:A:478:THR:HG21	1:A:486:PHE:HD2	1.74	0.52
1:B:65:PHE:CB	1:B:78:ARG:HH22	2.18	0.52
1:C:388:ASN:HB3	1:C:527:PRO:HD2	1.91	0.52
1:C:389:ASP:O	1:C:528:LYS:NZ	2.23	0.52
1:A:108:THR:OG1	1:A:234:ASN:OD1	2.26	0.52
1:A:703:ASN:OD1	1:A:704:SER:N	2.43	0.52
1:B:294:ASP:O	1:B:297:SER:OG	2.14	0.52
1:B:330:PRO:HG3	1:B:528:LYS:HB2	1.92	0.52
1:A:327:VAL:N	1:A:531:THR:OG1	2.37	0.52
1:A:342:PHE:HE1	1:A:511:VAL:HG21	1.75	0.52
1:A:457:ARG:NH1	1:A:459:SER:O	2.42	0.52

*Continued on next page...*

*Continued from previous page...*

Atom-1	Atom-2	Interatomic distance (Å)	Clash overlap (Å)
1:A:858:LEU:HD12	1:A:858:LEU:H	1.75	0.52
1:B:405:ASP:N	1:B:504:GLY:O	2.42	0.52
1:A:141:LEU:HD23	1:A:156:GLU:O	2.10	0.52
1:A:949:GLN:HG3	1:A:953:ASN:ND2	2.25	0.52
1:B:79:PHE:HE1	1:B:242:LEU:N	2.08	0.52
1:A:983:ARG:O	1:C:382:VAL:HA	2.10	0.52
1:A:796:ASP:OD1	1:A:796:ASP:N	2.32	0.51
1:A:809:PRO:O	1:A:814:LYS:NZ	2.43	0.51
1:B:905:ARG:HB3	1:B:1049:LEU:HD22	1.92	0.51
1:C:732:THR:HG22	1:C:1058:HIS:HE1	1.75	0.51
1:A:128:ILE:HD11	1:A:170:TYR:H	1.75	0.51
1:A:702:GLU:HG2	1:B:790:LYS:HZ2	1.73	0.51
1:B:57:PRO:O	1:B:60:SER:OG	2.24	0.51
1:C:800:PHE:HD1	1:C:927:PHE:HD2	1.56	0.51
1:A:86:PHE:N	1:A:236:THR:O	2.38	0.51
1:A:905:ARG:NH1	1:A:1049:LEU:O	2.36	0.51
1:B:721:SER:OG	1:B:722:VAL:N	2.43	0.51
1:C:1077:THR:OG1	1:C:1078:ALA:N	2.43	0.51
1:A:444:LYS:HD2	1:A:448:ASN:HA	1.92	0.51
1:C:119:ILE:HG22	1:C:126:VAL:HB	1.91	0.51
1:C:666:ILE:HB	1:C:670:ILE:O	2.10	0.51
1:B:560:LEU:O	1:B:562:PHE:N	2.38	0.51
1:C:825:LYS:HZ3	1:C:942:ALA:HA	1.74	0.51
1:C:1049:LEU:HB2	1:C:1065:VAL:O	2.10	0.51
1:B:365:TYR:HB3	1:B:388:ASN:HB2	1.92	0.51
1:C:811:LYS:O	1:C:814:LYS:NZ	2.38	0.51
1:A:162:SER:OG	1:A:164:ASN:ND2	2.44	0.51
1:B:816:SER:OG	1:B:817:PHE:N	2.44	0.51
1:B:1073:LYS:HB2	1:B:1075:PHE:CE1	2.45	0.51
1:A:112:SER:HA	1:A:135:PHE:H	1.75	0.51
1:A:229:LEU:O	1:A:231:ILE:N	2.43	0.51
1:C:379:CYS:SG	1:C:384:PRO:HB3	2.51	0.51
1:C:950:ASP:HA	1:C:953:ASN:HB2	1.92	0.51
1:A:350:VAL:HG12	1:A:400:PHE:HB2	1.93	0.51
1:A:616:ASN:O	1:A:616:ASN:ND2	2.44	0.51
1:A:707:TYR:HB3	1:B:792:PRO:HG3	1.93	0.51
1:A:912:THR:HG23	1:A:914:ASN:OD1	2.11	0.51
1:A:924:ALA:O	1:A:928:ASN:ND2	2.43	0.51
1:B:24:LEU:HD12	1:B:69:HIS:HB2	1.93	0.51
1:B:138:ASP:HB2	1:B:140:PHE:HE1	1.75	0.51
1:B:643:PHE:CD2	1:B:655:HIS:HB2	2.46	0.51

*Continued on next page...*



*Continued from previous page...*

Atom-1	Atom-2	Interatomic distance (Å)	Clash overlap (Å)
1:C:128:ILE:HD13	1:C:170:TYR:CD2	2.46	0.51
1:A:133:PHE:CD1	1:A:160:TYR:HB3	2.43	0.50
1:A:190:ARG:O	1:A:192:PHE:N	2.44	0.50
1:A:402:ILE:HD12	1:A:406:GLU:HB2	1.93	0.50
1:C:455:LEU:N	1:C:491:PRO:O	2.33	0.50
1:C:615:VAL:HG12	1:C:617:CYS:N	2.26	0.50
1:A:133:PHE:HA	1:A:160:TYR:HB3	1.92	0.50
1:B:43:PHE:HE1	1:B:283:GLY:HA3	1.76	0.50
1:C:474:GLN:HE22	1:C:478:THR:C	2.14	0.50
1:C:759:PHE:O	1:C:763:LEU:HG	2.11	0.50
1:A:102:ARG:HG2	1:A:242:LEU:O	2.11	0.50
1:A:568:ASP:OD2	1:A:572:THR:OG1	2.23	0.50
1:B:95:THR:HG22	1:B:189:LEU:HD11	1.92	0.50
1:B:774:GLN:HA	1:B:777:ASN:HD22	1.77	0.50
1:B:850:ILE:O	1:B:854:LYS:HG2	2.11	0.50
1:C:568:ASP:CG	1:C:570:ALA:H	2.15	0.50
1:C:1048:HIS:CD2	1:C:1049:LEU:N	2.80	0.50
1:A:1055:SER:OG	1:A:1056:ALA:N	2.45	0.50
1:B:346:ARG:NH2	1:B:401:VAL:HG22	2.25	0.50
1:B:990:GLU:HA	1:B:993:ILE:HD12	1.94	0.50
1:A:67:ALA:HB3	1:A:263:ALA:O	2.12	0.50
1:A:395:VAL:HG13	1:A:524:VAL:HG11	1.94	0.50
1:A:544:ASN:HD21	1:A:579:PRO:HB3	1.77	0.50
1:A:859:THR:OG1	1:A:860:VAL:N	2.44	0.50
1:C:357:ARG:HD3	1:C:396:TYR:CE1	2.47	0.50
1:A:36:VAL:HG21	1:A:220:PHE:CZ	2.46	0.50
1:A:131:CYS:HB2	1:A:133:PHE:CE1	2.47	0.50
1:A:748:GLU:OE1	1:A:748:GLU:N	2.28	0.50
1:B:109:THR:O	1:B:237:ARG:NH2	2.43	0.50
1:C:33:THR:HA	1:C:58:PHE:CE1	2.47	0.50
1:C:322:PRO:HA	1:C:538:CYS:O	2.12	0.50
1:A:79:PHE:O	1:A:81:ASN:N	2.44	0.50
1:B:616:ASN:O	1:B:618:THR:N	2.44	0.50
1:C:106:PHE:HB2	1:C:117:LEU:HD22	1.94	0.50
1:C:331:ASN:OD1	1:C:580:GLN:NE2	2.45	0.50
1:B:189:LEU:HB2	1:B:210:ILE:HG12	1.94	0.50
1:C:409:GLN:OE1	1:C:419:ALA:N	2.37	0.50
1:C:737:ASP:OD1	1:C:740:MET:N	2.34	0.50
1:C:922:LEU:HD11	1:C:926:GLN:HE21	1.77	0.50
1:A:132:GLU:OE1	1:A:134:GLN:NE2	2.43	0.50
1:C:365:TYR:HE1	1:C:388:ASN:HB2	1.77	0.50

*Continued on next page...*

*Continued from previous page...*

Atom-1	Atom-2	Interatomic distance (Å)	Clash overlap (Å)
1:A:124:THR:O	1:A:125:ASN:ND2	2.44	0.49
1:A:125:ASN:ND2	1:A:174:PRO:O	2.34	0.49
1:C:105:ILE:HD12	1:C:117:LEU:O	2.12	0.49
1:A:129:LYS:HA	1:A:169:GLU:HG2	1.94	0.49
1:A:800:PHE:CD2	1:A:927:PHE:HD2	2.29	0.49
1:B:365:TYR:H	1:B:388:ASN:ND2	2.10	0.49
1:B:533:LEU:HD21	1:B:535:LYS:HG3	1.93	0.49
1:B:1118:ASP:OD1	1:B:1118:ASP:N	2.45	0.49
1:C:100:ILE:O	1:C:102:ARG:HG2	2.12	0.49
1:B:116:SER:HB2	1:B:135:PHE:HZ	1.78	0.49
1:A:387:LEU:HD13	1:A:390:LEU:HD21	1.94	0.49
1:C:100:ILE:HG23	1:C:243:ALA:HB3	1.94	0.49
1:C:483:VAL:O	1:C:484:GLU:HG3	2.13	0.49
1:C:969:ASN:O	1:C:972:ALA:N	2.45	0.49
1:B:287:ASP:OD1	1:B:288:ALA:N	2.44	0.49
1:C:901:GLN:HE21	1:C:905:ARG:HE	1.61	0.49
1:A:456:PHE:HD2	1:A:491:PRO:HA	1.78	0.49
1:B:214:ARG:NH2	1:B:215:ASP:HB3	2.27	0.49
1:B:281:GLU:OE1	1:B:281:GLU:N	2.46	0.49
1:B:451:TYR:O	1:B:495:TYR:N	2.46	0.49
1:B:551:VAL:O	1:B:553:THR:HG23	2.12	0.49
1:C:78:ARG:NE	1:C:80:ASP:OD2	2.45	0.49
1:C:91:TYR:OH	1:C:191:GLU:OE2	2.30	0.49
1:C:535:LYS:HB2	1:C:536:ASN:ND2	2.27	0.49
1:A:115:GLN:HB2	1:A:132:GLU:HA	1.94	0.49
1:A:165:ASN:N	1:A:165:ASN:OD1	2.45	0.49
1:B:1055:SER:OG	1:B:1056:ALA:N	2.46	0.49
1:A:83:VAL:HG22	1:A:237:ARG:HD2	1.95	0.49
1:A:141:LEU:HG	1:A:159:VAL:HB	1.95	0.49
1:A:275:PHE:CD1	1:A:290:ASP:HA	2.48	0.49
1:A:989:ALA:O	1:A:993:ILE:HG13	2.13	0.49
1:A:57:PRO:O	1:A:60:SER:OG	2.19	0.48
1:A:315:THR:OG1	1:A:316:SER:N	2.46	0.48
1:A:787:GLN:HB2	1:A:789:TYR:CE1	2.48	0.48
1:B:342:PHE:HD2	1:B:511:VAL:HG11	1.78	0.48
1:B:1089:PHE:HE2	1:C:917:TYR:HD2	1.59	0.48
1:C:1055:SER:OG	1:C:1056:ALA:N	2.45	0.48
1:A:111:ASP:O	1:A:113:LYS:HG2	2.13	0.48
1:B:132:GLU:CB	1:B:165:ASN:H	2.26	0.48
1:C:403:ARG:HG2	1:C:405:ASP:H	1.78	0.48
1:A:64:TRP:HB3	1:A:66:HIS:NE2	2.29	0.48

*Continued on next page...*

*Continued from previous page...*

Atom-1	Atom-2	Interatomic distance (Å)	Clash overlap (Å)
1:A:131:CYS:HA	1:A:167:THR:H	1.77	0.48
1:A:408:ARG:HH11	1:A:414:GLN:NE2	2.12	0.48
1:A:912:THR:HG22	1:A:1106:GLN:OE1	2.12	0.48
1:B:382:VAL:HG21	1:B:390:LEU:HD11	1.96	0.48
1:B:448:ASN:N	1:B:498:GLN:OE1	2.37	0.48
1:C:233:ILE:HD11	1:C:235:ILE:HD11	1.96	0.48
1:C:391:CYS:HA	1:C:525:CYS:HB2	1.95	0.48
1:A:188:ASN:HA	1:A:208:THR:O	2.13	0.48
1:A:922:LEU:O	1:A:926:GLN:HG3	2.13	0.48
1:A:949:GLN:O	1:A:953:ASN:ND2	2.47	0.48
1:B:498:GLN:HG3	1:B:500:THR:HG22	1.95	0.48
1:B:290:ASP:O	1:B:297:SER:HB2	2.14	0.48
1:C:109:THR:OG1	1:C:111:ASP:OD1	2.30	0.48
1:C:298:GLU:O	1:C:302:THR:HG23	2.14	0.48
1:C:387:LEU:HD22	1:C:392:PHE:HZ	1.79	0.48
1:A:911:VAL:HG12	1:A:915:VAL:HG11	1.96	0.48
1:B:157:PHE:CG	1:B:157:PHE:O	2.66	0.48
1:B:378:LYS:HB2	1:B:433:VAL:HG23	1.95	0.48
1:A:141:LEU:HA	1:A:156:GLU:O	2.14	0.48
1:A:591:SER:O	1:A:591:SER:OG	2.25	0.48
1:A:746:SER:OG	1:A:747:THR:N	2.46	0.48
1:B:1077:THR:OG1	1:B:1078:ALA:N	2.47	0.48
1:C:34:ARG:NH2	1:C:218:GLN:O	2.47	0.48
1:A:130:VAL:HG22	1:A:169:GLU:HG3	1.95	0.48
1:A:950:ASP:N	1:A:950:ASP:OD1	2.46	0.48
1:A:950:ASP:OD1	1:A:951:VAL:N	2.46	0.48
1:B:850:ILE:HG23	1:B:854:LYS:HE2	1.94	0.48
1:C:89:GLY:HA3	1:C:270:LEU:HG	1.95	0.48
1:C:660:TYR:H	1:C:695:TYR:HE2	1.62	0.48
1:A:105:ILE:O	1:A:238:PHE:HB2	2.14	0.48
1:A:120:VAL:HG23	1:A:127:VAL:HB	1.96	0.48
1:A:457:ARG:NH2	1:A:467:ASP:OD2	2.47	0.48
1:A:563:GLN:HE22	1:B:43:PHE:HD1	1.61	0.48
1:B:64:TRP:HE1	1:B:264:ALA:HB1	1.79	0.48
1:B:116:SER:HG	1:B:117:LEU:H	1.61	0.48
1:B:125:ASN:HB2	1:B:173:GLN:O	2.13	0.48
1:B:1141:LEU:HG	1:B:1145:LEU:HD21	1.96	0.48
1:C:65:PHE:HA	1:C:78:ARG:CZ	2.43	0.48
1:A:1037:SER:OG	1:A:1038:LYS:N	2.47	0.47
1:B:271:GLN:N	1:B:271:GLN:OE1	2.47	0.47
1:C:186:PHE:CE2	1:C:213:VAL:HG23	2.48	0.47

*Continued on next page...*

*Continued from previous page...*

Atom-1	Atom-2	Interatomic distance (Å)	Clash overlap (Å)
1:A:756:TYR:HB3	1:A:759:PHE:HD2	1.78	0.47
1:B:305:SER:OG	1:B:306:PHE:N	2.47	0.47
1:C:748:GLU:O	1:C:752:LEU:HG	2.14	0.47
1:B:673:SER:OG	1:B:674:TYR:N	2.46	0.47
1:B:738:CYS:SG	1:B:739:THR:HG23	2.55	0.47
1:A:116:SER:H	1:A:133:PHE:HD2	1.61	0.47
1:A:907:ASN:ND2	1:A:913:GLN:HE21	2.12	0.47
1:C:340:GLU:OE1	1:C:341:VAL:HG13	2.14	0.47
1:A:369:TYR:OH	1:A:384:PRO:O	2.28	0.47
1:A:409:GLN:C	1:A:414:GLN:HG2	2.35	0.47
1:B:212:LEU:HD21	1:B:214:ARG:NH1	2.29	0.47
1:B:130:VAL:HG12	1:B:168:PHE:HB3	1.97	0.47
1:C:136:CYS:SG	1:C:158:ARG:HD3	2.54	0.47
1:C:411:ALA:HB3	1:C:414:GLN:HB2	1.97	0.47
1:A:105:ILE:HG22	1:A:118:LEU:HD13	1.96	0.47
1:A:675:GLN:HA	1:A:690:GLN:NE2	2.28	0.47
1:B:34:ARG:HG3	1:B:216:LEU:HD22	1.95	0.47
1:B:68:ILE:H	1:B:264:ALA:HB2	1.78	0.47
1:B:329:PHE:HB3	1:B:579:PRO:HG3	1.96	0.47
1:B:739:THR:HG22	1:B:753:LEU:HD23	1.96	0.47
1:C:360:ASN:HA	1:C:523:THR:OG1	2.15	0.47
1:B:195:LYS:HE2	1:B:204:TYR:HE2	1.79	0.47
1:A:131:CYS:HB3	1:A:166:CYS:HA	1.96	0.47
1:A:403:ARG:HH11	1:A:505:TYR:HA	1.79	0.47
1:A:474:GLN:NE2	1:A:479:PRO:HA	2.30	0.47
1:A:605:SER:OG	1:A:606:ASN:N	2.47	0.47
1:B:328:ARG:HG3	1:B:579:PRO:HG2	1.97	0.47
1:B:878:LEU:HD21	1:B:1052:PHE:HB3	1.97	0.47
1:C:78:ARG:HG3	1:C:80:ASP:OD1	2.15	0.47
1:A:36:VAL:HG21	1:A:220:PHE:CE1	2.50	0.47
1:A:338:PHE:HB3	1:A:342:PHE:CE2	2.49	0.47
1:A:800:PHE:HD2	1:A:927:PHE:HD2	1.63	0.47
1:B:102:ARG:HB3	1:B:241:LEU:HG	1.96	0.47
1:B:426:PRO:HB3	1:B:463:PRO:HG3	1.97	0.47
1:B:719:THR:HG23	1:B:1070:ALA:HB2	1.96	0.47
1:C:868:GLU:N	1:C:868:GLU:OE1	2.48	0.47
1:A:503:VAL:HA	1:A:506:GLN:HG3	1.97	0.46
1:A:118:LEU:O	1:A:129:LYS:N	2.46	0.46
1:B:708:SER:OG	1:B:711:SER:N	2.48	0.46
1:C:936:ASP:O	1:C:940:SER:CB	2.63	0.46
1:A:202:LYS:HZ2	1:A:227:VAL:C	2.18	0.46

*Continued on next page...*

Continued from previous page...

Atom-1	Atom-2	Interatomic distance (Å)	Clash overlap (Å)
1:A:473:TYR:HB2	1:A:491:PRO:HD3	1.98	0.46
1:A:904:TYR:OH	1:C:1094:VAL:HB	2.15	0.46
1:A:130:VAL:O	1:A:167:THR:HB	2.16	0.46
1:B:989:ALA:O	1:B:993:ILE:HG13	2.16	0.46
1:C:69:HIS:CD2	1:C:77:LYS:HD2	2.50	0.46
1:C:494:SER:OG	1:C:495:TYR:N	2.49	0.46
1:C:811:LYS:HZ1	1:C:815:ARG:HB2	1.80	0.46
1:B:1083:HIS:CG	1:B:1137:VAL:HG12	2.50	0.46
1:C:357:ARG:NE	1:C:359:SER:OG	2.25	0.46
1:A:27:ALA:HB3	1:A:66:HIS:NE2	2.30	0.46
1:B:298:GLU:HB3	1:B:315:THR:OG1	2.15	0.46
1:B:1000:ARG:O	1:B:1003:SER:OG	2.22	0.46
1:C:95:THR:HG22	1:C:189:LEU:HD11	1.98	0.46
1:C:477:SER:OG	1:C:478:THR:N	2.46	0.46
1:A:37:TYR:CZ	1:A:195:LYS:HD2	2.51	0.46
1:A:244:LEU:HD11	1:A:246:ARG:CZ	2.45	0.46
1:A:364:ASP:OD1	1:A:365:TYR:N	2.49	0.46
1:B:800:PHE:CD2	1:B:898:PHE:HE2	2.34	0.46
1:B:821:LEU:HD11	1:B:939:SER:HA	1.97	0.46
1:C:64:TRP:CD2	1:C:66:HIS:CE1	3.03	0.46
1:C:402:ILE:O	1:C:508:TYR:N	2.29	0.46
1:C:555:SER:OG	1:C:584:ILE:HB	2.16	0.46
1:A:33:THR:HA	1:A:58:PHE:CE1	2.50	0.46
1:A:187:LYS:O	1:A:210:ILE:N	2.49	0.46
1:A:906:PHE:HD2	1:A:916:LEU:HB2	1.80	0.46
1:A:36:VAL:O	1:A:223:LEU:HG	2.16	0.46
1:A:977:LEU:O	1:A:981:LEU:HG	2.15	0.46
1:C:96:GLU:HG2	1:C:99:ASN:H	1.81	0.46
1:C:1083:HIS:HD2	1:C:1136:THR:HA	1.81	0.46
1:A:364:ASP:HA	1:A:388:ASN:HD21	1.81	0.46
1:A:563:GLN:O	1:A:577:ARG:NH2	2.40	0.46
1:A:575:ALA:HA	1:A:586:ASP:HA	1.98	0.46
1:B:57:PRO:HG3	1:B:273:ARG:HE	1.80	0.46
1:C:349:SER:OG	1:C:350:VAL:N	2.49	0.46
1:A:1041:ASP:HB3	1:B:1030:SER:OG	2.16	0.45
1:B:396:TYR:N	1:B:514:SER:O	2.49	0.45
1:C:231:ILE:HD12	1:C:233:ILE:HG12	1.98	0.45
1:C:416:GLY:O	1:C:420:ASP:N	2.49	0.45
1:A:870:ILE:O	1:A:874:THR:HG23	2.16	0.45
1:A:906:PHE:CD2	1:A:916:LEU:HB2	2.51	0.45
1:A:975:SER:O	1:A:975:SER:OG	2.34	0.45

Continued on next page...

*Continued from previous page...*

Atom-1	Atom-2	Interatomic distance (Å)	Clash overlap (Å)
1:B:95:THR:HB	1:B:186:PHE:CD2	2.52	0.45
1:C:452:LEU:HA	1:C:494:SER:HA	1.97	0.45
1:C:1138:TYR:OH	1:C:1143:PRO:HG2	2.17	0.45
1:A:1089:PHE:CE2	1:B:917:TYR:HD2	2.34	0.45
1:B:26:PRO:HB3	1:B:65:PHE:HD1	1.80	0.45
1:B:530:SER:OG	1:B:531:THR:N	2.48	0.45
1:B:659:SER:HB3	1:B:698:SER:HB2	1.97	0.45
1:C:128:ILE:HB	1:C:170:TYR:HB3	1.97	0.45
1:C:421:TYR:CD1	1:C:457:ARG:HB3	2.51	0.45
1:C:767:LEU:HD23	1:C:770:ILE:HD12	1.97	0.45
1:C:912:THR:HG22	1:C:1106:GLN:OE1	2.16	0.45
1:A:27:ALA:H	1:A:66:HIS:CD2	2.35	0.45
1:A:37:TYR:OH	1:A:54:LEU:O	2.29	0.45
1:A:327:VAL:O	1:A:531:THR:N	2.49	0.45
1:B:403:ARG:HD3	1:B:505:TYR:HA	1.98	0.45
1:B:968:SER:O	1:B:975:SER:OG	2.33	0.45
1:C:379:CYS:HB2	1:C:384:PRO:HD3	1.97	0.45
1:A:171:VAL:C	1:A:173:GLN:HG2	2.36	0.45
1:A:329:PHE:O	1:A:580:GLN:HG2	2.17	0.45
1:A:521:PRO:HG3	1:A:564:GLN:HG2	1.98	0.45
1:B:816:SER:HB3	1:B:819:GLU:CD	2.37	0.45
1:B:1084:ASP:HB2	1:B:1086:LYS:HZ3	1.80	0.45
1:C:65:PHE:HA	1:C:78:ARG:NH2	2.31	0.45
1:C:659:SER:HB3	1:C:698:SER:HB3	1.98	0.45
1:B:34:ARG:HH21	1:B:217:PRO:HG2	1.81	0.45
1:B:168:PHE:CE2	1:B:170:TYR:HB2	2.52	0.45
1:B:722:VAL:HG22	1:B:1065:VAL:HG22	1.98	0.45
1:C:730:SER:OG	1:C:731:MET:N	2.49	0.45
1:A:83:VAL:HG13	1:A:83:VAL:O	2.17	0.45
1:B:116:SER:HB2	1:B:135:PHE:CZ	2.51	0.45
1:C:983:ARG:O	1:C:984:LEU:HD23	2.16	0.45
1:A:702:GLU:HG2	1:B:790:LYS:NZ	2.32	0.45
1:A:1039:ARG:NE	1:B:1031:GLU:OE2	2.34	0.45
1:B:737:ASP:OD1	1:B:737:ASP:N	2.34	0.45
1:B:850:ILE:O	1:B:854:LYS:NZ	2.35	0.45
1:C:547:THR:OG1	1:C:548:GLY:N	2.50	0.45
1:C:1083:HIS:CD2	1:C:1136:THR:HA	2.52	0.45
1:A:129:LYS:HA	1:A:129:LYS:HD2	1.88	0.45
1:A:334:ASN:O	1:A:362:VAL:HG12	2.17	0.45
1:A:734:THR:OG1	1:A:735:SER:N	2.50	0.45
1:B:87:ASN:O	1:B:89:GLY:N	2.50	0.45

*Continued on next page...*

*Continued from previous page...*

Atom-1	Atom-2	Interatomic distance (Å)	Clash overlap (Å)
1:B:362:VAL:HG11	1:B:527:PRO:HB3	1.98	0.45
1:C:410:ILE:HG23	1:C:425:LEU:HD21	1.97	0.45
1:A:172:SER:OG	1:A:173:GLN:N	2.49	0.45
1:A:273:ARG:HG3	1:A:274:THR:H	1.80	0.45
1:A:112:SER:O	1:A:113:LYS:HE2	2.17	0.44
1:A:950:ASP:O	1:A:954:GLN:HG3	2.18	0.44
1:B:450:ASN:OD1	1:B:450:ASN:N	2.43	0.44
1:B:977:LEU:HD23	1:B:977:LEU:HA	1.80	0.44
1:B:1082:CYS:HB2	1:B:1126:CYS:HB2	1.71	0.44
1:C:417:LYS:HD2	1:C:455:LEU:HA	1.98	0.44
1:C:454:ARG:NE	1:C:456:PHE:O	2.50	0.44
1:C:1085:GLY:O	1:C:1126:CYS:N	2.50	0.44
1:A:454:ARG:HH11	1:A:457:ARG:HD2	1.82	0.44
1:B:52:GLN:HG2	1:B:273:ARG:O	2.18	0.44
1:B:518:LEU:HD23	1:B:518:LEU:HA	1.80	0.44
1:C:434:ILE:O	1:C:511:VAL:HG22	2.17	0.44
1:C:442:ASP:OD2	1:C:509:ARG:NE	2.50	0.44
1:C:516:GLU:HG2	1:C:519:HIS:CE1	2.53	0.44
1:B:156:GLU:HA	1:B:158:ARG:NH1	2.32	0.44
1:B:331:ASN:HA	1:B:580:GLN:HG3	2.00	0.44
1:B:814:LYS:HD3	1:B:814:LYS:HA	1.60	0.44
1:C:192:PHE:HB3	1:C:194:PHE:CE1	2.52	0.44
1:C:553:THR:HG23	1:C:586:ASP:HB2	1.98	0.44
1:C:856:ASN:HB2	1:C:858:LEU:HD23	1.99	0.44
1:C:1125:ASN:OD1	1:C:1125:ASN:N	2.49	0.44
1:A:88:ASP:N	1:A:88:ASP:OD1	2.49	0.44
1:A:125:ASN:HB3	1:A:173:GLN:O	2.18	0.44
1:A:140:PHE:H	1:A:158:ARG:HB2	1.82	0.44
1:A:1009:THR:O	1:A:1013:ILE:HG13	2.18	0.44
1:B:190:ARG:HB3	1:B:192:PHE:CE1	2.53	0.44
1:B:373:SER:O	1:B:436:TRP:HB2	2.18	0.44
1:B:435:ALA:HA	1:B:509:ARG:O	2.18	0.44
1:C:937:SER:O	1:C:941:THR:HG22	2.16	0.44
1:A:377:PHE:HD1	1:A:434:ILE:HG13	1.83	0.44
1:A:821:LEU:HD23	1:A:821:LEU:HA	1.71	0.44
1:A:909:ILE:HG13	1:A:911:VAL:HG23	2.00	0.44
1:A:1100:THR:HG1	1:A:1101:HIS:CE1	2.25	0.44
1:B:979:ASP:O	1:B:983:ARG:HG2	2.17	0.44
1:C:101:ILE:HG12	1:C:242:LEU:HG	2.00	0.44
1:C:135:PHE:HE1	1:C:159:VAL:HA	1.83	0.44
1:C:160:TYR:OH	1:C:165:ASN:N	2.50	0.44

*Continued on next page...*

*Continued from previous page...*

Atom-1	Atom-2	Interatomic distance (Å)	Clash overlap (Å)
1:B:53:ASP:HB3	1:B:55:PHE:CE2	2.52	0.44
1:B:310:LYS:HE2	1:B:310:LYS:HB3	1.62	0.44
1:B:914:ASN:OD1	1:B:915:VAL:N	2.50	0.44
1:A:290:ASP:OD1	1:A:291:CYS:N	2.50	0.44
1:A:339:GLY:O	1:A:343:ASN:N	2.50	0.44
1:B:424:LYS:H	1:B:461:LEU:HB2	1.82	0.44
1:B:1116:THR:HB	1:B:1140:PRO:HD3	1.99	0.44
1:C:109:THR:OG1	1:C:114:THR:HG21	2.18	0.44
1:C:185:ASN:HD21	1:C:211:ASN:HA	1.83	0.44
1:C:189:LEU:HD12	1:C:189:LEU:HA	1.81	0.44
1:C:441:LEU:HD22	1:C:509:ARG:NH2	2.33	0.44
1:C:778:THR:O	1:C:781:VAL:HG12	2.18	0.44
1:C:784:GLN:N	1:C:784:GLN:OE1	2.51	0.44
1:A:770:ILE:O	1:A:774:GLN:HG2	2.17	0.44
1:B:102:ARG:HG2	1:B:120:VAL:HG13	1.98	0.44
1:B:328:ARG:NH2	1:B:531:THR:OG1	2.36	0.44
1:C:444:LYS:HB2	1:C:448:ASN:N	2.33	0.44
1:C:462:LYS:N	1:C:465:GLU:OE1	2.44	0.44
1:A:105:ILE:HG12	1:A:239:GLN:O	2.18	0.44
1:A:965:GLN:OE1	1:B:758:SER:OG	2.20	0.44
1:B:33:THR:HA	1:B:58:PHE:CE1	2.53	0.44
1:B:64:TRP:HA	1:B:266:TYR:HD1	1.82	0.44
1:B:296:LEU:HB2	1:B:608:VAL:HG11	1.99	0.44
1:B:560:LEU:O	1:B:563:GLN:HG3	2.18	0.44
1:C:133:PHE:HD1	1:C:160:TYR:HD1	1.66	0.44
1:C:191:GLU:HB2	1:C:223:LEU:HD11	2.00	0.44
1:C:477:SER:O	1:C:478:THR:OG1	2.35	0.44
1:C:1072:GLU:N	1:C:1072:GLU:OE1	2.51	0.44
1:A:191:GLU:O	1:A:193:VAL:HG23	2.18	0.43
1:A:474:GLN:NE2	1:A:476:GLY:O	2.46	0.43
1:B:426:PRO:HG3	1:B:463:PRO:HB3	1.99	0.43
1:B:563:GLN:N	1:B:577:ARG:HH21	2.14	0.43
1:B:807:PRO:HA	1:B:816:SER:HB2	1.99	0.43
1:B:870:ILE:O	1:B:874:THR:HG23	2.18	0.43
1:B:949:GLN:O	1:B:953:ASN:ND2	2.50	0.43
1:C:140:PHE:CE2	1:C:244:LEU:HB2	2.53	0.43
1:C:353:TRP:HZ3	1:C:355:ARG:HB2	1.83	0.43
1:C:675:GLN:HG3	1:C:676:THR:H	1.82	0.43
1:C:736:VAL:O	1:C:764:ASN:ND2	2.50	0.43
1:A:141:LEU:HD13	1:A:154:GLU:HB2	2.00	0.43
1:B:355:ARG:H	1:B:466:ARG:HH21	1.65	0.43

*Continued on next page...*



Continued from previous page...

Atom-1	Atom-2	Interatomic distance (Å)	Clash overlap (Å)
1:A:280:ASN:OD1	1:A:284:THR:N	2.30	0.43
1:A:816:SER:O	1:A:819:GLU:HB2	2.18	0.43
1:B:93:ALA:O	1:B:95:THR:HG23	2.18	0.43
1:B:537:LYS:HB3	1:B:537:LYS:HE2	1.64	0.43
1:B:767:LEU:HD23	1:B:767:LEU:HA	1.77	0.43
1:C:408:ARG:O	1:C:414:GLN:HG2	2.18	0.43
1:A:81:ASN:HD22	1:A:240:THR:HG23	1.83	0.43
1:A:107:GLY:HA3	1:A:116:SER:OG	2.17	0.43
1:A:387:LEU:HD12	1:A:392:PHE:CE2	2.54	0.43
1:A:537:LYS:HE2	1:A:537:LYS:HB3	1.77	0.43
1:B:142:GLY:N	1:B:156:GLU:O	2.52	0.43
1:C:316:SER:OG	1:C:317:ASN:N	2.52	0.43
1:C:357:ARG:NH1	1:C:396:TYR:OH	2.52	0.43
1:C:811:LYS:HG3	1:C:812:PRO:HD2	2.00	0.43
1:A:1123:SER:OG	1:B:918:GLU:OE2	2.35	0.43
1:B:67:ALA:HB3	1:B:263:ALA:C	2.39	0.43
1:B:190:ARG:O	1:B:192:PHE:N	2.51	0.43
1:B:216:LEU:H	1:B:216:LEU:HD12	1.84	0.43
1:B:803:SER:OG	1:B:804:GLN:NE2	2.52	0.43
1:C:90:VAL:HG23	1:C:268:GLY:H	1.82	0.43
1:C:103:GLY:HA3	1:C:241:LEU:HD22	2.00	0.43
1:A:107:GLY:N	1:A:235:ILE:HG23	2.34	0.43
1:A:200:TYR:HA	1:A:228:ASP:OD1	2.18	0.43
1:A:1092:GLU:N	1:A:1092:GLU:OE1	2.51	0.43
1:B:280:ASN:OD1	1:B:283:GLY:N	2.46	0.43
1:B:408:ARG:NE	1:B:414:GLN:OE1	2.51	0.43
1:B:563:GLN:H	1:B:577:ARG:NH2	2.14	0.43
1:C:357:ARG:HD2	1:C:358:ILE:N	2.33	0.43
1:C:474:GLN:OE1	1:C:479:PRO:HA	2.18	0.43
1:A:560:LEU:HB2	1:A:563:GLN:HG3	2.01	0.43
1:A:977:LEU:HD23	1:A:977:LEU:HA	1.85	0.43
1:B:42:VAL:HG23	1:B:42:VAL:O	2.18	0.43
1:B:453:TYR:HB3	1:B:495:TYR:HE1	1.83	0.43
1:B:821:LEU:HD21	1:B:939:SER:N	2.33	0.43
1:B:1083:HIS:HD2	1:B:1136:THR:HA	1.81	0.43
1:C:24:LEU:HD22	1:C:76:THR:N	2.33	0.43
1:C:43:PHE:HE1	1:C:283:GLY:HA3	1.84	0.43
1:C:201:PHE:CD2	1:C:203:ILE:HD11	2.54	0.43
1:C:567:ARG:HA	1:C:572:THR:O	2.18	0.43
1:C:874:THR:O	1:C:878:LEU:HG	2.18	0.43
1:A:117:LEU:HD12	1:A:118:LEU:N	2.34	0.43

Continued on next page...

*Continued from previous page...*

Atom-1	Atom-2	Interatomic distance (Å)	Clash overlap (Å)
1:A:290:ASP:OD1	1:A:292:ALA:N	2.51	0.43
1:A:1102:TRP:CZ2	1:A:1133:VAL:HG21	2.54	0.43
1:B:187:LYS:HE3	1:B:209:PRO:HB2	2.00	0.43
1:C:133:PHE:HD1	1:C:160:TYR:CD1	2.37	0.43
1:B:141:LEU:HG	1:B:154:GLU:HG3	2.01	0.43
1:B:359:SER:OG	1:B:394:ASN:HA	2.18	0.43
1:B:454:ARG:NH1	1:B:491:PRO:HB2	2.34	0.43
1:B:617:CYS:HA	1:B:619:GLU:OE2	2.19	0.43
1:B:1073:LYS:HB3	1:B:1073:LYS:HE2	1.71	0.43
1:B:1081:ILE:HG13	1:B:1095:PHE:CE2	2.53	0.43
1:C:24:LEU:HD12	1:C:25:PRO:HD2	2.01	0.43
1:C:806:LEU:HD23	1:C:806:LEU:HA	1.75	0.43
1:A:453:TYR:CE1	1:A:493:GLN:HG3	2.54	0.42
1:B:136:CYS:SG	1:B:158:ARG:HB3	2.59	0.42
1:B:244:LEU:HA	1:B:259:THR:HG21	2.00	0.42
1:B:355:ARG:H	1:B:466:ARG:NH2	2.17	0.42
1:B:410:ILE:HG23	1:B:425:LEU:HD11	2.01	0.42
1:B:938:LEU:HA	1:B:938:LEU:HD23	1.78	0.42
1:B:1037:SER:OG	1:B:1038:LYS:N	2.51	0.42
1:C:69:HIS:HB2	1:C:78:ARG:H	1.84	0.42
1:C:396:TYR:HB2	1:C:514:SER:OG	2.18	0.42
1:A:274:THR:HG22	1:A:291:CYS:SG	2.59	0.42
1:A:1141:LEU:HA	1:A:1144:GLU:HB2	2.01	0.42
1:B:328:ARG:HH22	1:B:532:ASN:C	2.22	0.42
1:B:877:LEU:HD23	1:B:877:LEU:HA	1.82	0.42
1:B:962:LEU:HD12	1:B:1007:TYR:CG	2.55	0.42
1:B:966:LEU:HD23	1:B:966:LEU:HA	1.78	0.42
1:C:334:ASN:O	1:C:362:VAL:HG22	2.19	0.42
1:C:538:CYS:HA	1:C:550:GLY:O	2.18	0.42
1:A:110:LEU:O	1:A:139:PRO:HG3	2.19	0.42
1:A:480:CYS:O	1:A:483:VAL:HG22	2.19	0.42
1:A:659:SER:HB2	1:A:698:SER:HB3	2.00	0.42
1:A:1100:THR:OG1	1:A:1101:HIS:N	2.52	0.42
1:C:884:SER:OG	1:C:894:LEU:N	2.52	0.42
1:A:175:PHE:CG	1:A:176:LEU:N	2.88	0.42
1:A:408:ARG:HH11	1:A:414:GLN:HE21	1.66	0.42
1:A:703:ASN:O	1:B:789:TYR:HA	2.20	0.42
1:A:1003:SER:O	1:A:1006:THR:HG22	2.20	0.42
1:A:1028:LYS:O	1:A:1032:CYS:HB2	2.19	0.42
1:B:31:SER:OG	1:B:32:PHE:N	2.52	0.42
1:B:214:ARG:NH1	1:B:215:ASP:O	2.52	0.42

*Continued on next page...*

Continued from previous page...

Atom-1	Atom-2	Interatomic distance (Å)	Clash overlap (Å)
1:C:64:TRP:CD1	1:C:266:TYR:CE1	3.07	0.42
1:C:177:MET:HG2	1:C:190:ARG:CZ	2.49	0.42
1:C:324:GLU:H	1:C:539:VAL:HG12	1.85	0.42
1:C:358:ILE:HB	1:C:395:VAL:HG13	2.01	0.42
1:A:231:ILE:HG22	1:A:233:ILE:HG23	2.01	0.42
1:B:393:THR:HG21	1:B:518:LEU:H	1.85	0.42
1:B:398:ASP:HB3	1:B:400:PHE:HE1	1.83	0.42
1:C:70:VAL:H	1:C:262:ALA:HB2	1.84	0.42
1:C:295:PRO:O	1:C:299:THR:HG23	2.18	0.42
1:C:439:ASN:O	1:C:443:SER:HB2	2.20	0.42
1:A:408:ARG:CZ	1:A:409:GLN:HG2	2.49	0.42
1:A:774:GLN:HA	1:A:777:ASN:ND2	2.33	0.42
1:B:97:LYS:HD3	1:B:185:ASN:O	2.19	0.42
1:A:104:TRP:HB3	1:A:106:PHE:CZ	2.55	0.42
1:B:125:ASN:HD21	1:B:171:VAL:HG12	1.84	0.42
1:C:83:VAL:HG11	1:C:237:ARG:CZ	2.50	0.42
1:C:97:LYS:HG2	1:C:186:PHE:CD1	2.55	0.42
1:C:449:TYR:HD1	1:C:495:TYR:O	2.02	0.42
1:C:909:ILE:O	1:C:911:VAL:N	2.43	0.42
1:A:134:GLN:N	1:A:160:TYR:HA	2.33	0.42
1:B:53:ASP:OD1	1:B:195:LYS:NZ	2.53	0.42
1:B:619:GLU:N	1:B:619:GLU:OE1	2.52	0.42
1:B:759:PHE:O	1:B:763:LEU:HG	2.20	0.42
1:B:777:ASN:O	1:B:780:GLU:N	2.50	0.42
1:B:930:ALA:O	1:B:933:LYS:HB2	2.20	0.42
1:B:1049:LEU:HB2	1:B:1065:VAL:O	2.20	0.42
1:B:1102:TRP:C	1:B:1115:ILE:HD11	2.40	0.42
1:C:347:PHE:CE2	1:C:509:ARG:HB3	2.54	0.42
1:C:365:TYR:CE1	1:C:388:ASN:HB2	2.54	0.42
1:C:490:PHE:O	1:C:493:GLN:NE2	2.53	0.42
1:C:577:ARG:HE	1:C:584:ILE:HD11	1.85	0.42
1:A:228:ASP:OD1	1:A:229:LEU:N	2.52	0.42
1:A:1091:ARG:N	1:A:1119:ASN:O	2.47	0.42
1:B:101:ILE:HA	1:B:242:LEU:HA	2.01	0.42
1:B:229:LEU:HD12	1:B:229:LEU:HA	1.83	0.42
1:B:245:HIS:H	1:B:259:THR:HB	1.84	0.42
1:B:746:SER:OG	1:B:747:THR:N	2.52	0.42
1:B:808:ASP:HB3	1:B:811:LYS:HG2	2.02	0.42
1:C:201:PHE:CE2	1:C:203:ILE:HD11	2.55	0.42
1:C:442:ASP:OD1	1:C:451:TYR:OH	2.29	0.42
1:A:127:VAL:HG13	1:A:171:VAL:HG11	2.02	0.42

Continued on next page...

*Continued from previous page...*

Atom-1	Atom-2	Interatomic distance (Å)	Clash overlap (Å)
1:A:138:ASP:HB2	1:A:140:PHE:HE1	1.85	0.42
1:A:438:SER:O	1:A:442:ASP:N	2.53	0.42
1:A:477:SER:O	1:A:478:THR:OG1	2.37	0.42
1:A:497:PHE:CD2	1:A:507:PRO:HB3	2.55	0.42
1:B:95:THR:HB	1:B:186:PHE:CG	2.54	0.42
1:B:112:SER:H	1:B:135:PHE:HB2	1.85	0.42
1:B:296:LEU:O	1:B:300:LYS:HG3	2.19	0.42
1:B:859:THR:OG1	1:B:860:VAL:N	2.53	0.42
1:C:374:PHE:HA	1:C:436:TRP:HB3	2.02	0.42
1:C:422:ASN:OD1	1:C:454:ARG:N	2.40	0.42
1:C:473:TYR:HB3	1:C:489:TYR:O	2.20	0.42
1:C:1097:SER:OG	1:C:1102:TRP:CD2	2.73	0.42
1:A:94:SER:HB3	1:A:190:ARG:CB	2.43	0.41
1:A:353:TRP:CZ2	1:A:466:ARG:HB2	2.54	0.41
1:B:350:VAL:HG23	1:B:495:TYR:OH	2.20	0.41
1:B:1043:CYS:O	1:B:1048:HIS:HD2	2.03	0.41
1:C:454:ARG:HD2	1:C:467:ASP:OD2	2.20	0.41
1:A:452:LEU:HD13	1:A:492:LEU:HD12	2.01	0.41
1:A:800:PHE:HD2	1:A:927:PHE:CD2	2.38	0.41
1:B:49:HIS:NE2	1:B:50:SER:O	2.53	0.41
1:C:57:PRO:HB3	1:C:273:ARG:CZ	2.50	0.41
1:C:396:TYR:N	1:C:514:SER:O	2.48	0.41
1:C:617:CYS:SG	1:C:644:GLN:HB2	2.60	0.41
1:A:42:VAL:HG21	1:A:44:ARG:NH2	2.36	0.41
1:A:437:ASN:OD1	1:A:506:GLN:HB3	2.20	0.41
1:A:447:GLY:HA3	1:A:449:TYR:CZ	2.54	0.41
1:A:559:PHE:HB3	1:A:577:ARG:HH22	1.86	0.41
1:A:811:LYS:NZ	1:A:820:ASP:OD2	2.45	0.41
1:A:996:LEU:HD23	1:A:996:LEU:HA	1.82	0.41
1:B:95:THR:OG1	1:B:95:THR:O	2.38	0.41
1:B:375:SER:HB3	1:B:437:ASN:H	1.85	0.41
1:B:811:LYS:NZ	1:B:820:ASP:OD2	2.45	0.41
1:B:1125:ASN:OD1	1:B:1125:ASN:N	2.49	0.41
1:C:58:PHE:HD1	1:C:58:PHE:HA	1.77	0.41
1:C:118:LEU:HD11	1:C:120:VAL:HB	2.01	0.41
1:C:747:THR:OG1	1:C:748:GLU:N	2.53	0.41
1:C:797:PHE:O	1:C:799:GLY:N	2.53	0.41
1:A:230:PRO:HB2	1:C:357:ARG:HH12	1.85	0.41
1:A:273:ARG:HG3	1:A:274:THR:N	2.35	0.41
1:A:303:LEU:HD11	1:A:313:TYR:CD2	2.56	0.41
1:A:350:VAL:HG23	1:A:422:ASN:HB3	2.02	0.41

*Continued on next page...*

*Continued from previous page...*

Atom-1	Atom-2	Interatomic distance (Å)	Clash overlap (Å)
1:A:934:ILE:HD13	1:A:934:ILE:HA	1.86	0.41
1:B:901:GLN:NE2	1:B:905:ARG:HE	2.19	0.41
1:B:949:GLN:HG3	1:B:953:ASN:HD21	1.85	0.41
1:B:958:ALA:O	1:B:961:THR:OG1	2.31	0.41
1:C:40:ASP:OD1	1:C:41:LYS:N	2.50	0.41
1:C:45:SER:O	1:C:47:VAL:HG13	2.20	0.41
1:A:48:LEU:HD23	1:A:278:LYS:HA	2.02	0.41
1:A:435:ALA:HA	1:A:509:ARG:O	2.20	0.41
1:A:971:GLY:N	1:B:755:GLN:HE21	2.12	0.41
1:B:156:GLU:HA	1:B:158:ARG:HH11	1.86	0.41
1:B:592:PHE:CE1	1:B:615:VAL:HG22	2.47	0.41
1:B:811:LYS:HD2	1:B:811:LYS:HA	1.85	0.41
1:C:34:ARG:O	1:C:56:LEU:HD23	2.21	0.41
1:C:126:VAL:HG22	1:C:175:PHE:CZ	2.56	0.41
1:A:119:ILE:HA	1:A:128:ILE:HA	2.03	0.41
1:A:1062:PHE:O	1:A:1063:LEU:HD23	2.20	0.41
1:B:955:ASN:O	1:B:959:LEU:HD23	2.20	0.41
1:B:987:PRO:HG2	1:B:988:GLU:OE1	2.21	0.41
1:C:108:THR:HA	1:C:236:THR:HG22	2.01	0.41
1:C:120:VAL:O	1:C:126:VAL:HA	2.20	0.41
1:C:714:ILE:HD13	1:C:714:ILE:HA	1.89	0.41
1:B:187:LYS:HE3	1:B:187:LYS:HB3	1.79	0.41
1:B:187:LYS:HA	1:B:210:ILE:O	2.21	0.41
1:C:360:ASN:ND2	1:C:523:THR:HG21	2.36	0.41
1:A:64:TRP:HD1	1:A:65:PHE:N	2.19	0.41
1:B:476:GLY:N	1:B:487:ASN:OD1	2.54	0.41
1:B:819:GLU:H	1:B:819:GLU:HG3	1.72	0.41
1:C:976:VAL:O	1:C:980:ILE:HG12	2.21	0.41
1:A:188:ASN:HB3	1:A:207:HIS:HB2	2.01	0.41
1:A:216:LEU:HG	1:A:266:TYR:CE2	2.55	0.41
1:A:462:LYS:CG	1:A:465:GLU:HB2	2.50	0.41
1:A:498:GLN:HB2	1:A:501:ASN:OD1	2.21	0.41
1:B:53:ASP:HB3	1:B:55:PHE:CZ	2.56	0.41
1:B:115:GLN:HE21	1:B:130:VAL:HG22	1.85	0.41
1:B:127:VAL:O	1:B:128:ILE:HD13	2.21	0.41
1:B:136:CYS:O	1:B:139:PRO:HD3	2.21	0.41
1:B:350:VAL:O	1:B:353:TRP:HD1	2.04	0.41
1:B:402:ILE:HG13	1:B:510:VAL:HG11	2.02	0.41
1:B:474:GLN:NE2	1:B:477:SER:O	2.54	0.41
1:B:854:LYS:HA	1:B:854:LYS:HD3	1.97	0.41
1:B:993:ILE:HG13	1:B:993:ILE:H	1.73	0.41

*Continued on next page...*

*Continued from previous page...*

Atom-1	Atom-2	Interatomic distance (Å)	Clash overlap (Å)
1:C:37:TYR:HB3	1:C:223:LEU:HB2	2.02	0.41
1:C:130:VAL:HG21	1:C:233:ILE:HD13	2.02	0.41
1:C:324:GLU:O	1:C:539:VAL:HB	2.20	0.41
1:A:275:PHE:HD1	1:A:290:ASP:HA	1.85	0.41
1:A:490:PHE:CD2	1:A:492:LEU:HB2	2.55	0.41
1:B:697:MET:HB2	1:B:697:MET:HE3	1.91	0.41
1:C:226:LEU:HD12	1:C:226:LEU:HA	1.83	0.41
1:C:323:THR:OG1	1:C:324:GLU:HG3	2.21	0.41
1:C:365:TYR:HB3	1:C:387:LEU:HB2	2.02	0.41
1:C:574:ASP:OD1	1:C:575:ALA:N	2.54	0.41
1:C:748:GLU:H	1:C:748:GLU:CD	2.22	0.41
1:C:851:CYS:HA	1:C:854:LYS:NZ	2.36	0.41
1:A:81:ASN:HD22	1:A:240:THR:CG2	2.34	0.40
1:A:761:THR:H	1:A:761:THR:HG23	1.67	0.40
1:B:38:TYR:CE1	1:B:285:ILE:HG13	2.56	0.40
1:B:139:PRO:HA	1:B:158:ARG:O	2.21	0.40
1:B:774:GLN:HA	1:B:777:ASN:ND2	2.35	0.40
1:C:53:ASP:HB2	1:C:55:PHE:CE2	2.56	0.40
1:C:69:HIS:H	1:C:262:ALA:HA	1.86	0.40
1:C:206:LYS:HE2	1:C:207:HIS:O	2.21	0.40
1:C:346:ARG:HA	1:C:509:ARG:NH2	2.36	0.40
1:C:775:ASP:OD2	1:C:864:LEU:HB2	2.21	0.40
1:A:214:ARG:NE	1:A:215:ASP:O	2.40	0.40
1:A:497:PHE:CG	1:A:507:PRO:HB3	2.57	0.40
1:B:559:PHE:CD2	1:B:577:ARG:HB2	2.57	0.40
1:C:69:HIS:CE1	1:C:260:ALA:HB3	2.56	0.40
1:C:537:LYS:O	1:C:539:VAL:HG13	2.21	0.40
1:C:966:LEU:HD23	1:C:966:LEU:HA	1.83	0.40
1:A:207:HIS:O	1:A:207:HIS:CG	2.75	0.40
1:A:420:ASP:OD1	1:A:421:TYR:N	2.54	0.40
1:B:472:ILE:HG13	1:B:482:GLY:HA2	2.03	0.40
1:B:557:LYS:HA	1:B:557:LYS:HD3	1.89	0.40
1:B:598:ILE:HG23	1:B:664:ILE:HG21	2.02	0.40
1:C:136:CYS:O	1:C:139:PRO:HD3	2.21	0.40
1:C:186:PHE:CD2	1:C:213:VAL:HG23	2.56	0.40
1:C:200:TYR:HA	1:C:229:LEU:O	2.22	0.40
1:C:485:GLY:N	1:C:488:CYS:HB2	2.36	0.40
1:C:588:THR:HA	1:C:589:PRO:HD3	1.97	0.40
1:C:774:GLN:HA	1:C:777:ASN:HD22	1.86	0.40
1:C:866:THR:O	1:C:870:ILE:HG13	2.21	0.40
1:A:135:PHE:HD1	1:A:158:ARG:O	2.03	0.40

*Continued on next page...*

Continued from previous page...

Atom-1	Atom-2	Interatomic distance (Å)	Clash overlap (Å)
1:A:865:LEU:HD23	1:A:865:LEU:HA	1.76	0.40
1:A:969:ASN:HB2	1:B:755:GLN:HE22	1.86	0.40
1:A:979:ASP:O	1:A:982:SER:OG	2.22	0.40
1:B:233:ILE:HG13	1:B:235:ILE:HD11	2.02	0.40
1:B:379:CYS:HB2	1:B:432:CYS:HB3	1.90	0.40
1:B:906:PHE:HD1	1:B:906:PHE:HA	1.75	0.40
1:B:912:THR:CG2	1:B:1106:GLN:HE22	2.35	0.40
1:C:353:TRP:CZ3	1:C:355:ARG:HB2	2.57	0.40
1:B:23:GLN:HG2	1:B:80:ASP:OD2	2.22	0.40
1:B:82:PRO:O	1:B:84:LEU:N	2.54	0.40
1:C:373:SER:O	1:C:373:SER:OG	2.35	0.40
1:C:447:GLY:HA2	1:C:498:GLN:HG2	2.03	0.40
1:C:675:GLN:CG	1:C:676:THR:H	2.34	0.40
1:C:1141:LEU:HA	1:C:1144:GLU:OE1	2.21	0.40

There are no symmetry-related clashes.

## 5.3 Torsion angles [i](#)

### 5.3.1 Protein backbone [i](#)

In the following table, the Percentiles column shows the percent Ramachandran outliers of the chain as a percentile score with respect to all PDB entries followed by that with respect to all EM entries.

The Analysed column shows the number of residues for which the backbone conformation was analysed, and the total number of residues.

Mol	Chain	Analysed	Favoured	Allowed	Outliers	Percentiles	
1	A	1013/1247 (81%)	869 (86%)	144 (14%)	0	100	100
1	B	1020/1247 (82%)	886 (87%)	134 (13%)	0	100	100
1	C	1012/1247 (81%)	878 (87%)	134 (13%)	0	100	100
All	All	3045/3741 (81%)	2633 (86%)	412 (14%)	0	100	100

There are no Ramachandran outliers to report.

### 5.3.2 Protein sidechains [i](#)

In the following table, the Percentiles column shows the percent sidechain outliers of the chain as a percentile score with respect to all PDB entries followed by that with respect to all EM entries.

The Analysed column shows the number of residues for which the sidechain conformation was analysed, and the total number of residues.

Mol	Chain	Analysed	Rotameric	Outliers	Percentiles	
1	A	898/1085 (83%)	893 (99%)	5 (1%)	84	90
1	B	905/1085 (83%)	905 (100%)	0	100	100
1	C	899/1085 (83%)	896 (100%)	3 (0%)	91	94
All	All	2702/3255 (83%)	2694 (100%)	8 (0%)	90	94

All (8) residues with a non-rotameric sidechain are listed below:

Mol	Chain	Res	Type
1	A	165	ASN
1	A	166	CYS
1	A	760	CYS
1	A	873	TYR
1	A	906	PHE
1	C	538	CYS
1	C	945	LEU
1	C	983	ARG

Sometimes sidechains can be flipped to improve hydrogen bonding and reduce clashes. All (70) such sidechains are listed below:

Mol	Chain	Res	Type
1	A	164	ASN
1	A	314	GLN
1	A	388	ASN
1	A	519	HIS
1	A	536	ASN
1	A	564	GLN
1	A	657	ASN
1	A	777	ASN
1	A	787	GLN
1	A	901	GLN
1	A	907	ASN
1	A	926	GLN
1	A	928	ASN

*Continued on next page...*



*Continued from previous page...*

<b>Mol</b>	<b>Chain</b>	<b>Res</b>	<b>Type</b>
1	A	953	ASN
1	A	969	ASN
1	A	978	ASN
1	A	1011	GLN
1	A	1083	HIS
1	B	115	GLN
1	B	239	GLN
1	B	317	ASN
1	B	388	ASN
1	B	394	ASN
1	B	422	ASN
1	B	439	ASN
1	B	542	ASN
1	B	544	ASN
1	B	564	GLN
1	B	644	GLN
1	B	657	ASN
1	B	751	ASN
1	B	755	GLN
1	B	777	ASN
1	B	949	GLN
1	B	953	ASN
1	B	954	GLN
1	B	955	ASN
1	B	965	GLN
1	B	1005	GLN
1	B	1010	GLN
1	B	1048	HIS
1	B	1071	GLN
1	B	1088	HIS
1	C	61	ASN
1	C	69	HIS
1	C	125	ASN
1	C	185	ASN
1	C	317	ASN
1	C	321	GLN
1	C	360	ASN
1	C	519	HIS
1	C	536	ASN
1	C	564	GLN
1	C	580	GLN
1	C	675	GLN

*Continued on next page...*

*Continued from previous page...*

Mol	Chain	Res	Type
1	C	690	GLN
1	C	703	ASN
1	C	717	ASN
1	C	777	ASN
1	C	901	GLN
1	C	925	ASN
1	C	935	GLN
1	C	954	GLN
1	C	955	ASN
1	C	1005	GLN
1	C	1036	GLN
1	C	1054	GLN
1	C	1058	HIS
1	C	1064	HIS
1	C	1088	HIS

### 5.3.3 RNA [i](#)

There are no RNA molecules in this entry.

### 5.4 Non-standard residues in protein, DNA, RNA chains [i](#)

There are no non-standard protein/DNA/RNA residues in this entry.

### 5.5 Carbohydrates [i](#)

There are no oligosaccharides in this entry.

### 5.6 Ligand geometry [i](#)

There are no ligands in this entry.

### 5.7 Other polymers [i](#)

There are no such residues in this entry.

### 5.8 Polymer linkage issues [i](#)

There are no chain breaks in this entry.

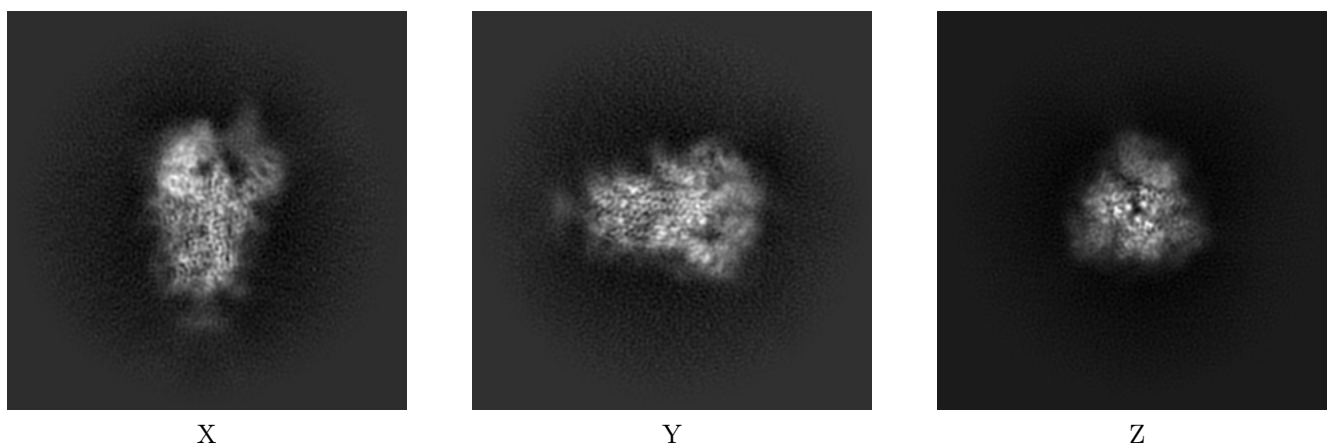
## 6 Map visualisation [i](#)

This section contains visualisations of the EMDB entry EMD-31512. These allow visual inspection of the internal detail of the map and identification of artifacts.

No raw map or half-maps were deposited for this entry and therefore no images, graphs, etc. pertaining to the raw map can be shown.

### 6.1 Orthogonal projections [i](#)

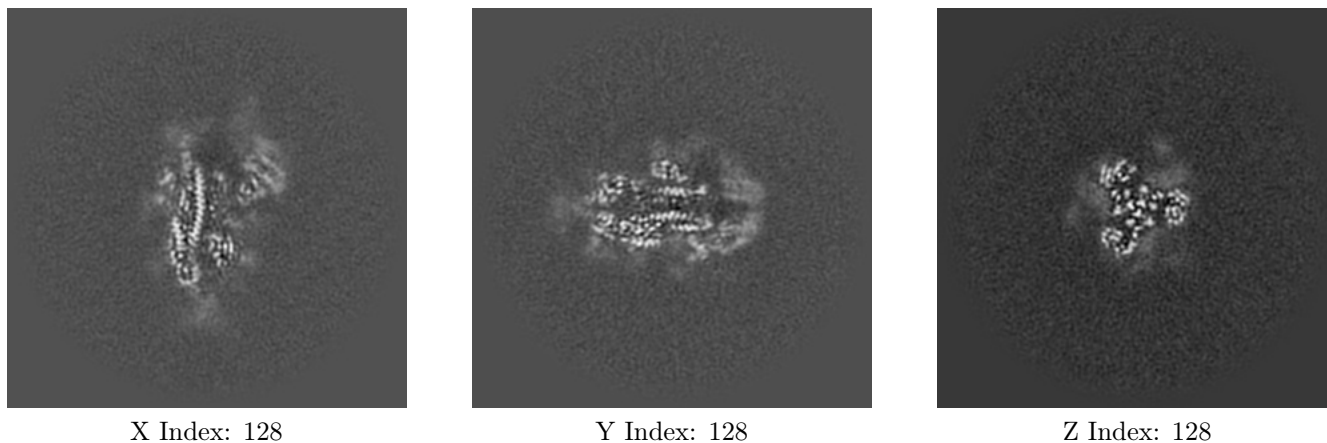
#### 6.1.1 Primary map



The images above show the map projected in three orthogonal directions.

### 6.2 Central slices [i](#)

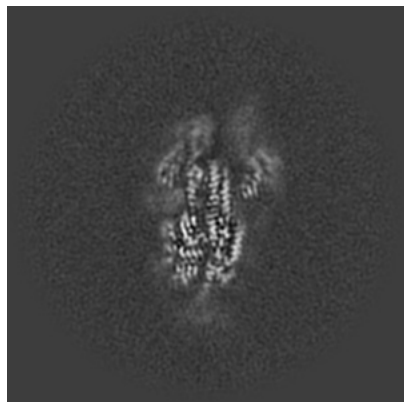
#### 6.2.1 Primary map



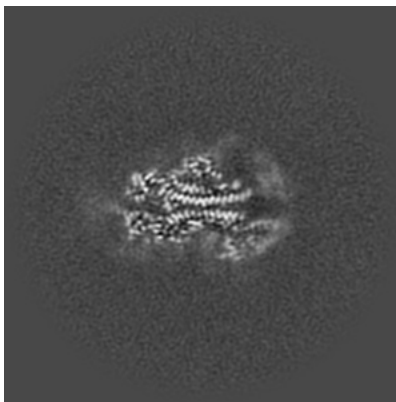
The images above show central slices of the map in three orthogonal directions.

## 6.3 Largest variance slices [i](#)

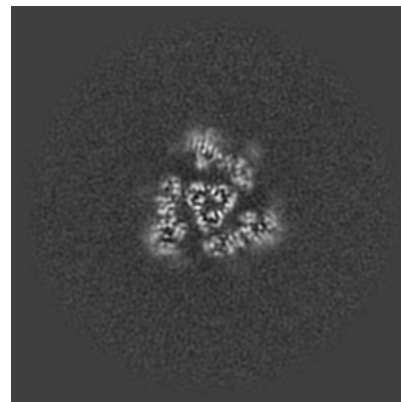
### 6.3.1 Primary map



X Index: 133



Y Index: 131

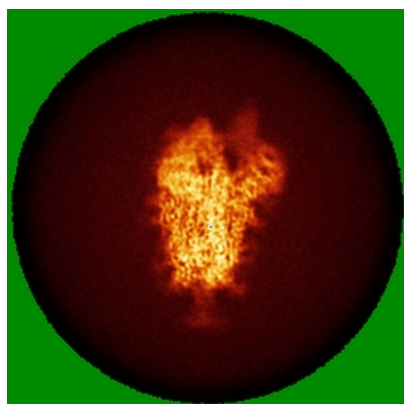


Z Index: 147

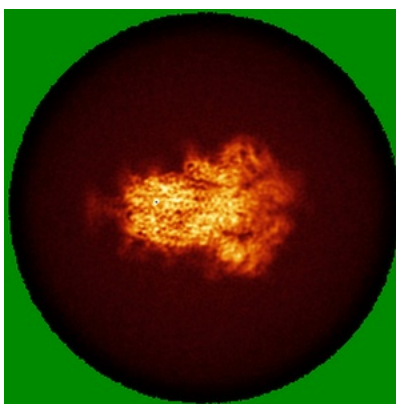
The images above show the largest variance slices of the map in three orthogonal directions.

## 6.4 Orthogonal standard-deviation projections (False-color) [i](#)

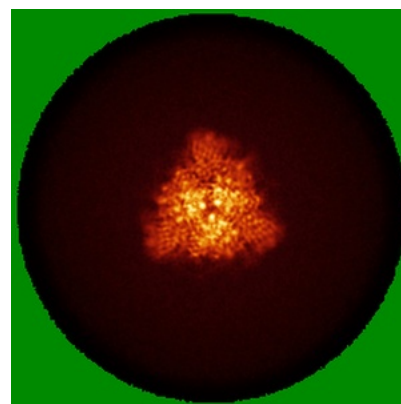
### 6.4.1 Primary map



X



Y

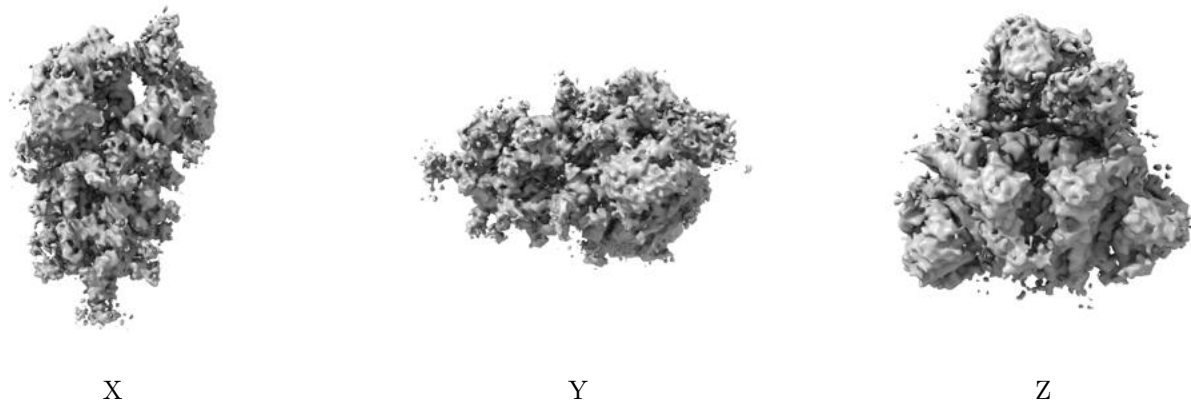


Z

The images above show the map standard deviation projections with false color in three orthogonal directions. Minimum values are shown in green, max in blue, and dark to light orange shades represent small to large values respectively.

## 6.5 Orthogonal surface views [i](#)

### 6.5.1 Primary map



The images above show the 3D surface view of the map at the recommended contour level 0.25. These images, in conjunction with the slice images, may facilitate assessment of whether an appropriate contour level has been provided.

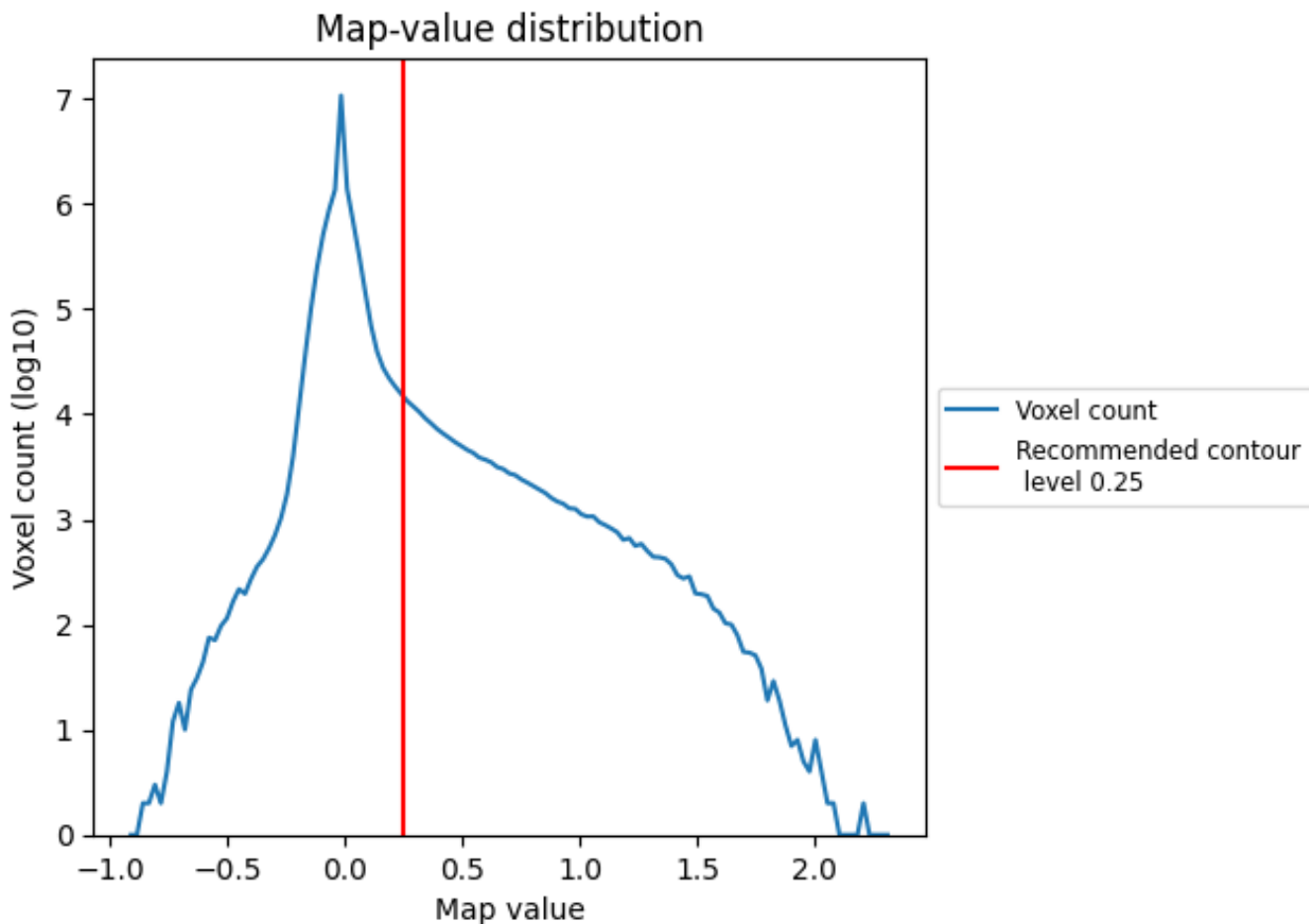
## 6.6 Mask visualisation [i](#)

This section was not generated. No masks/segmentation were deposited.

## 7 Map analysis [i](#)

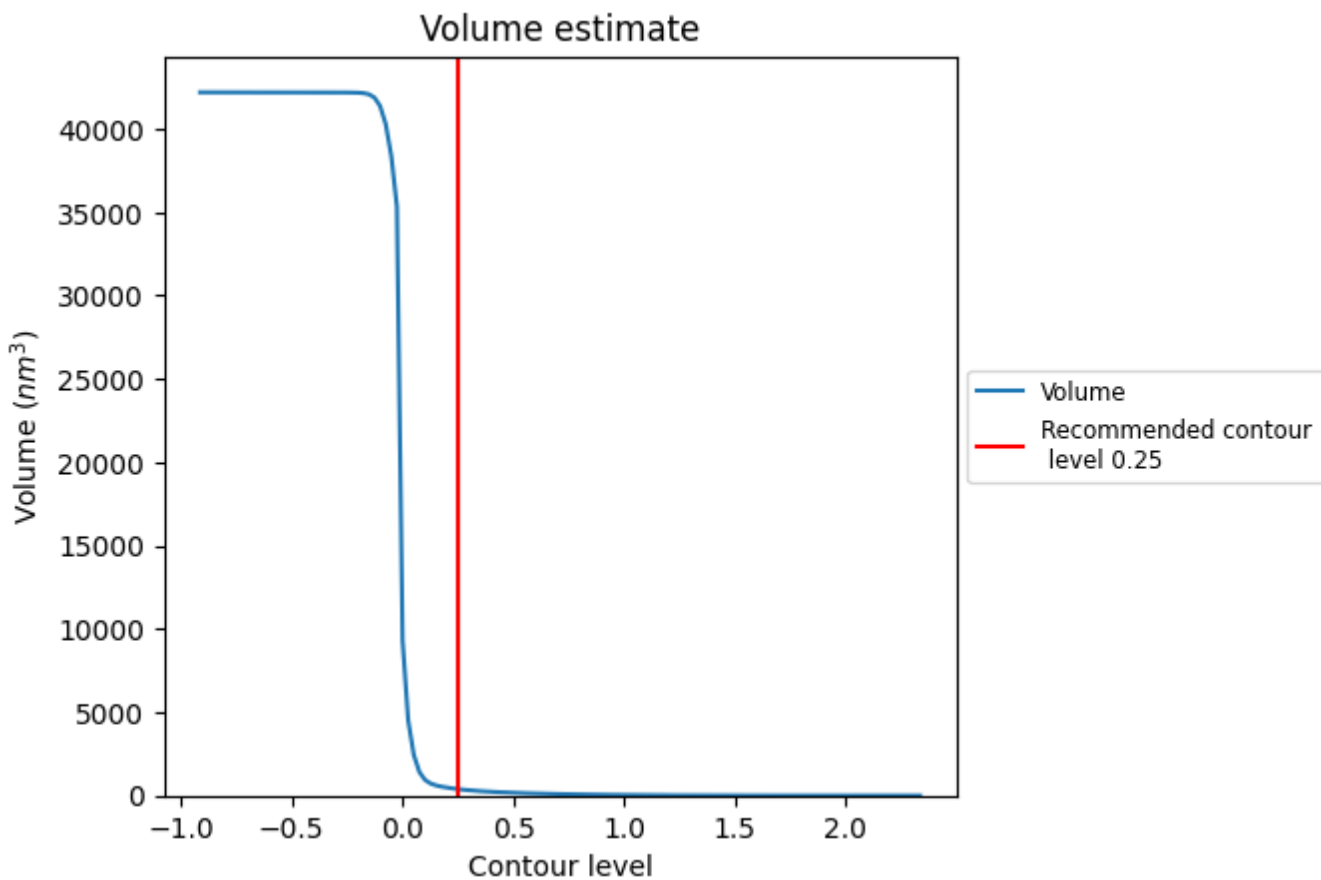
This section contains the results of statistical analysis of the map.

### 7.1 Map-value distribution [i](#)



The map-value distribution is plotted in 128 intervals along the x-axis. The y-axis is logarithmic. A spike in this graph at zero usually indicates that the volume has been masked.

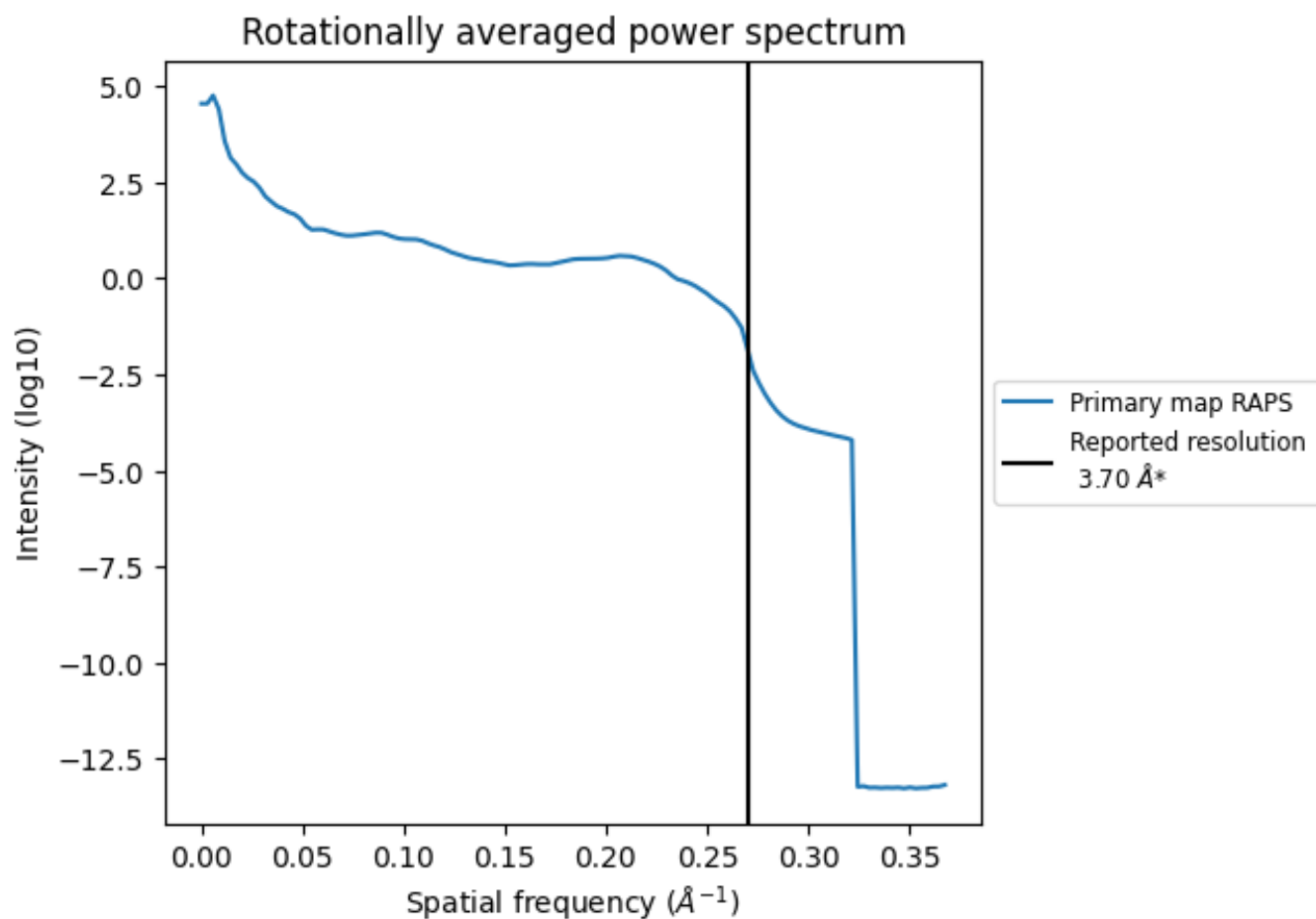
## 7.2 Volume estimate [i](#)



The volume at the recommended contour level is 387  $\text{nm}^3$ ; this corresponds to an approximate mass of 350 kDa.

The volume estimate graph shows how the enclosed volume varies with the contour level. The recommended contour level is shown as a vertical line and the intersection between the line and the curve gives the volume of the enclosed surface at the given level.

### 7.3 Rotationally averaged power spectrum [i](#)



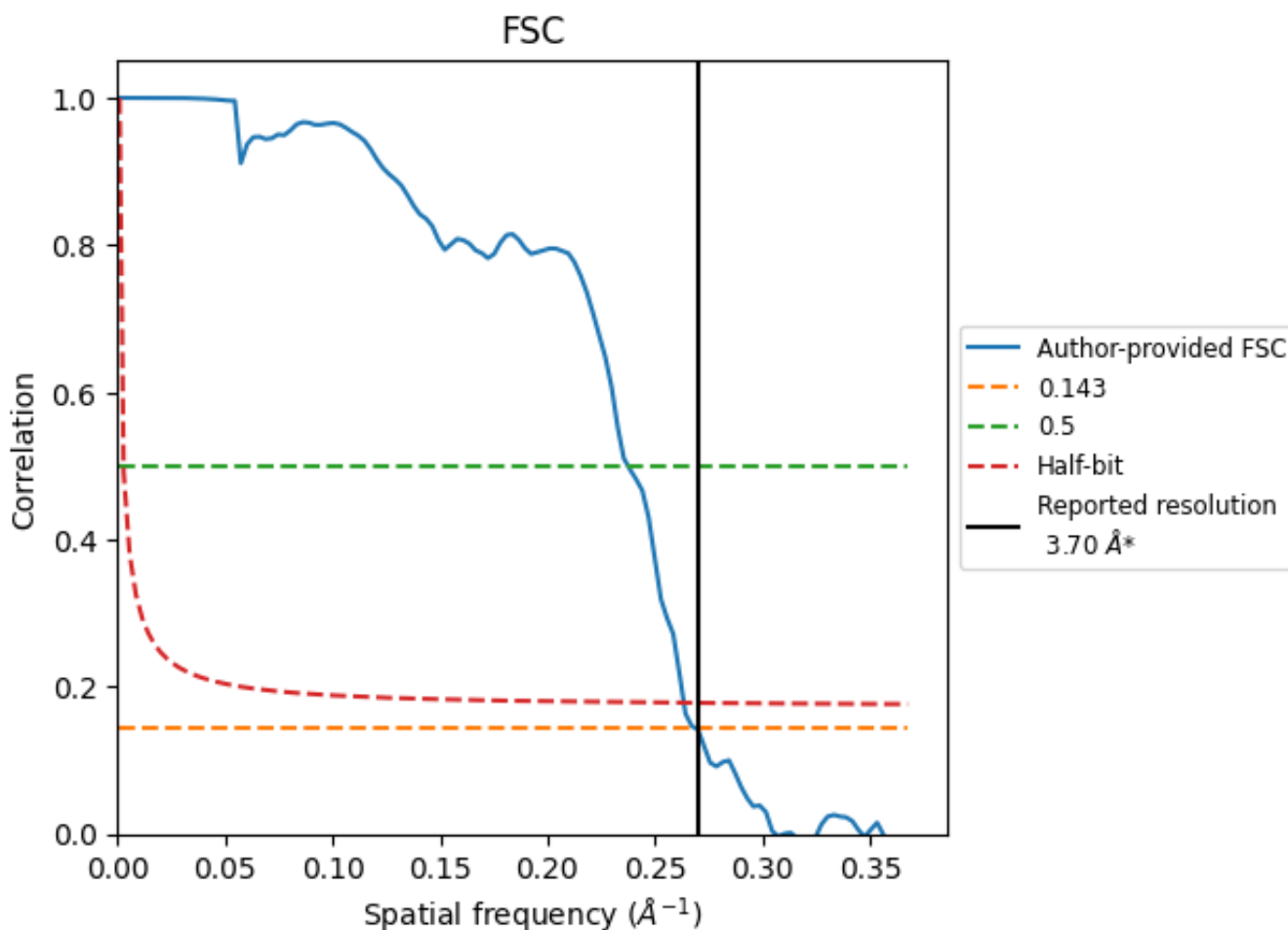
\*Reported resolution corresponds to spatial frequency of  $0.270 \text{\AA}^{-1}$



## 8 Fourier-Shell correlation [i](#)

Fourier-Shell Correlation (FSC) is the most commonly used method to estimate the resolution of single-particle and subtomogram-averaged maps. The shape of the curve depends on the imposed symmetry, mask and whether or not the two 3D reconstructions used were processed from a common reference. The reported resolution is shown as a black line. A curve is displayed for the half-bit criterion in addition to lines showing the 0.143 gold standard cut-off and 0.5 cut-off.

### 8.1 FSC [i](#)



\*Reported resolution corresponds to spatial frequency of 0.270 Å<sup>-1</sup>

## 8.2 Resolution estimates [i](#)

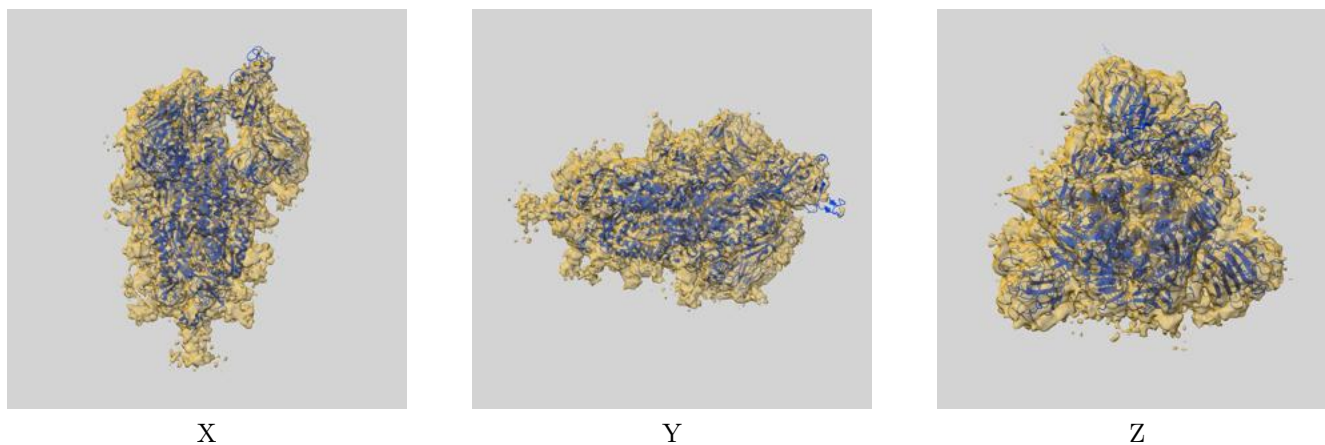
Resolution estimate (Å)	Estimation criterion (FSC cut-off)		
	0.143	0.5	Half-bit
Reported by author	3.70	-	-
Author-provided FSC curve	3.72	4.21	3.80
Unmasked-calculated*	-	-	-

\*Resolution estimate based on FSC curve calculated by comparison of deposited half-maps.

## 9 Map-model fit [i](#)

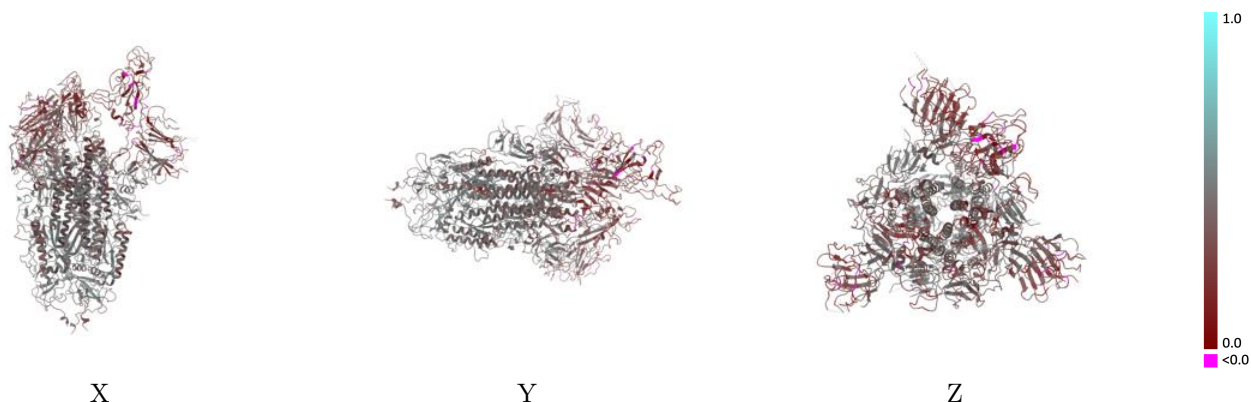
This section contains information regarding the fit between EMDB map EMD-31512 and PDB model 7FB1. Per-residue inclusion information can be found in section 3 on page 7.

### 9.1 Map-model overlay [i](#)



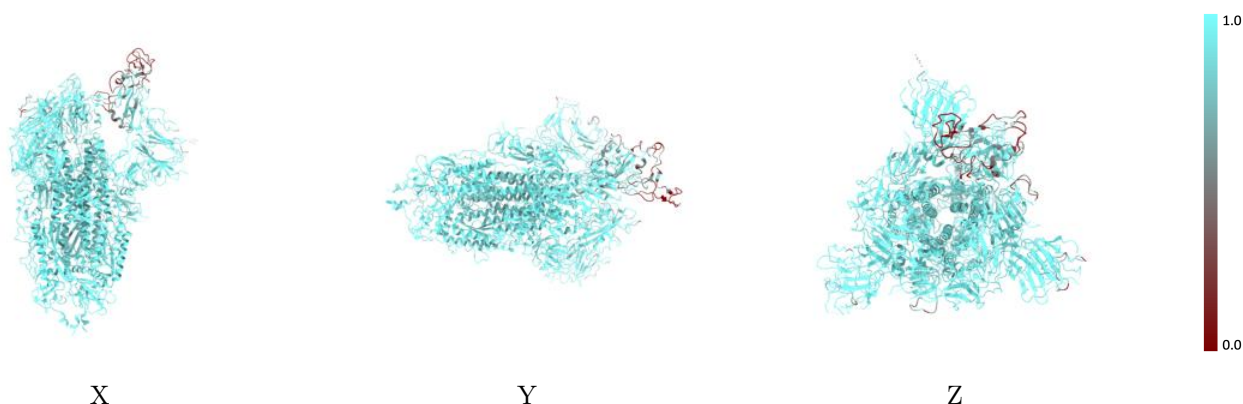
The images above show the 3D surface view of the map at the recommended contour level 0.25 at 50% transparency in yellow overlaid with a ribbon representation of the model coloured in blue. These images allow for the visual assessment of the quality of fit between the atomic model and the map.

## 9.2 Q-score mapped to coordinate model [i](#)



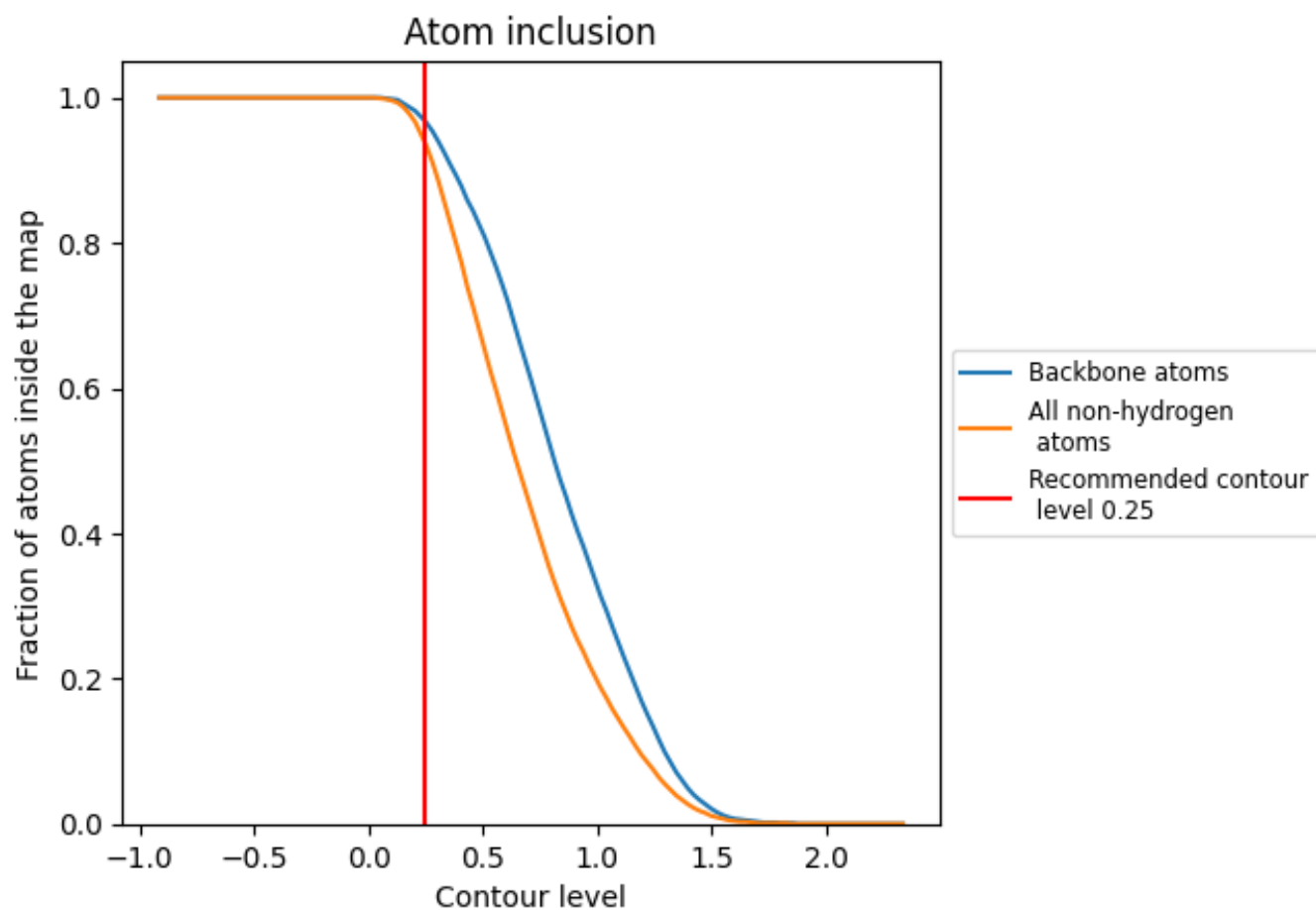
The images above show the model with each residue coloured according to its Q-score. This shows their resolvability in the map with higher Q-score values reflecting better resolvability. Please note: Q-score is calculating the resolvability of atoms, and thus high values are only expected at resolutions at which atoms can be resolved. Low Q-score values may therefore be expected for many entries.

## 9.3 Atom inclusion mapped to coordinate model [i](#)



The images above show the model with each residue coloured according to its atom inclusion. This shows to what extent they are inside the map at the recommended contour level (0.25).








## 9.4 Atom inclusion [i](#)



At the recommended contour level, 97% of all backbone atoms, 94% of all non-hydrogen atoms, are inside the map.

## 9.5 Map-model fit summary

The table lists the average atom inclusion at the recommended contour level (0.25) and Q-score for the entire model and for each chain.

Chain	Atom inclusion	Q-score
All	 0.9360	 0.3820
A	 0.9540	 0.3860
B	 0.8920	 0.3750
C	 0.9630	 0.3860

