



wwPDB X-ray Structure Validation Summary Report ⓘ

Aug 26, 2024 – 11:30 AM EDT

PDB ID : 8FBM
Title : Crystal structure of *Cryptosporidium parvum* N-myristoyltransferase with bound myristoyl-CoA and inhibitor 1
Authors : Staker, B.L.; Fenwick, M.K.; Seattle Structural Genomics Center for Infectious Disease (SSGCID)
Deposited on : 2022-11-29
Resolution : 1.90 Å(reported)

This is a wwPDB X-ray Structure Validation Summary Report for a publicly released PDB entry.

We welcome your comments at validation@mail.wwpdb.org

A user guide is available at

<https://www.wwpdb.org/validation/2017/XrayValidationReportHelp>

with specific help available everywhere you see the ⓘ symbol.

The types of validation reports are described at

<http://www.wwpdb.org/validation/2017/FAQs#types>.

The following versions of software and data (see [references ⓘ](#)) were used in the production of this report:

MolProbity : 4.02b-467
Mogul : 2022.3.0, CSD as543be (2022)
Xtriage (Phenix) : 1.20.1
EDS : 3.0
buster-report : 1.1.7 (2018)
Percentile statistics : 20231227.v01 (using entries in the PDB archive December 27th 2023)
CCP4 : 9.0.002 (Gargrove)
Density-Fitness : 1.0.11
Ideal geometry (proteins) : Engh & Huber (2001)
Ideal geometry (DNA, RNA) : Parkinson et al. (1996)
Validation Pipeline (wwPDB-VP) : 2.38.3

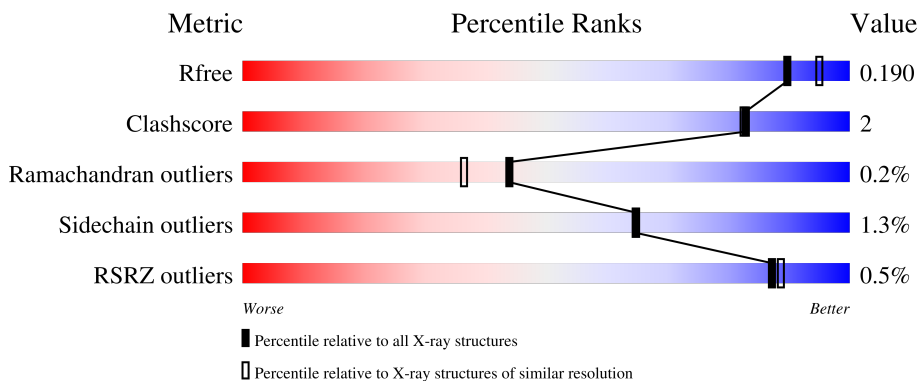
1 Overall quality at a glance

The following experimental techniques were used to determine the structure:

X-RAY DIFFRACTION

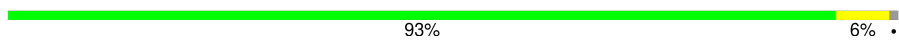

The reported resolution of this entry is 1.90 Å.

Percentile scores (ranging between 0-100) for global validation metrics of the entry are shown in the following graphic. The table shows the number of entries on which the scores are based.



Metric	Whole archive (#Entries)	Similar resolution (#Entries, resolution range(Å))
R_{free}	164625	7293 (1.90-1.90)
Clashscore	180529	8090 (1.90-1.90)
Ramachandran outliers	177936	8022 (1.90-1.90)
Sidechain outliers	177891	8022 (1.90-1.90)
RSRZ outliers	164620	7292 (1.90-1.90)

The table below summarises the geometric issues observed across the polymeric chains and their fit to the electron density. The red, orange, yellow and green segments of the lower bar indicate the fraction of residues that contain outliers for ≥ 3 , 2, 1 and 0 types of geometric quality criteria respectively. A grey segment represents the fraction of residues that are not modelled. The numeric value for each fraction is indicated below the corresponding segment, with a dot representing fractions $\leq 5\%$. The upper red bar (where present) indicates the fraction of residues that have poor fit to the electron density. The numeric value is given above the bar.

Mol	Chain	Length	Quality of chain
1	A	431	 93% 6%
1	B	431	 92% 6%

2 Entry composition

There are 8 unique types of molecules in this entry. The entry contains 15842 atoms, of which 7426 are hydrogens and 0 are deuteriums.

In the tables below, the ZeroOcc column contains the number of atoms modelled with zero occupancy, the AltConf column contains the number of residues with at least one atom in alternate conformation and the Trace column contains the number of residues modelled with at most 2 atoms.

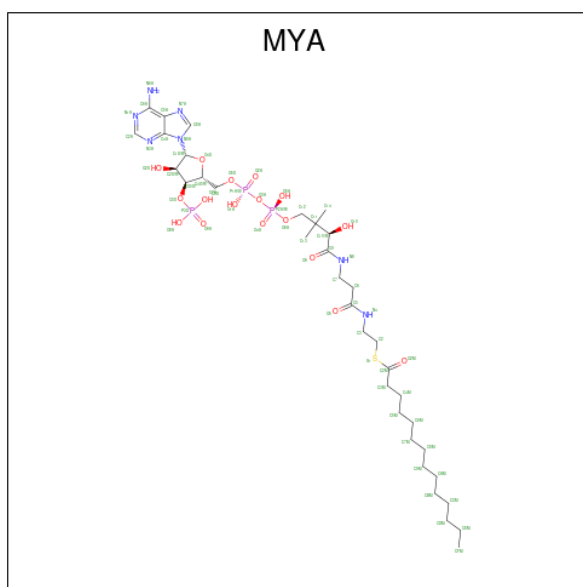
- Molecule 1 is a protein called Glycylpeptide N-tetradecanoyltransferase.

Mol	Chain	Residues	Atoms						ZeroOcc	AltConf	Trace
			Total	C	H	N	O	S			
1	A	426	7241	2334	3611	616	660	20	0	16	0
1	B	426	7134	2310	3549	602	653	20	0	14	0

There are 8 discrepancies between the modelled and reference sequences:

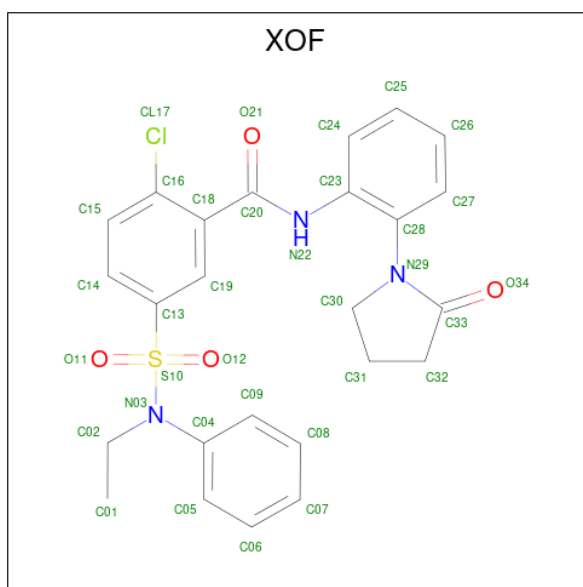
Chain	Residue	Modelled	Actual	Comment	Reference
A	36	GLY	-	expression tag	UNP Q5CV46
A	37	PRO	-	expression tag	UNP Q5CV46
A	38	GLY	-	expression tag	UNP Q5CV46
A	39	SER	-	expression tag	UNP Q5CV46
B	36	GLY	-	expression tag	UNP Q5CV46
B	37	PRO	-	expression tag	UNP Q5CV46
B	38	GLY	-	expression tag	UNP Q5CV46
B	39	SER	-	expression tag	UNP Q5CV46

- Molecule 2 is TETRADECANOYL-COA (three-letter code: MYA) (formula: C₃₅H₆₂N₇O₁₇P₃S) (labeled as "Ligand of Interest" by depositor).



Mol	Chain	Residues	Atoms							ZeroOcc	AltConf
			Total	C	H	N	O	P	S		
2	A	1	Total	C	H	N	O	P	S	0	0
			121	35	58	7	17	3	1		
2	B	1	Total	C	H	N	O	P	S	0	0
			121	35	58	7	17	3	1		

- Molecule 3 is 2-chloro-5-[ethyl(phenyl)sulfamoyl]-N-[2-(2-oxopyrrolidin-1-yl)phenyl]benzamide (three-letter code: XOF) (formula: C₂₅H₂₄ClN₃O₄S) (labeled as "Ligand of Interest" by depositor).



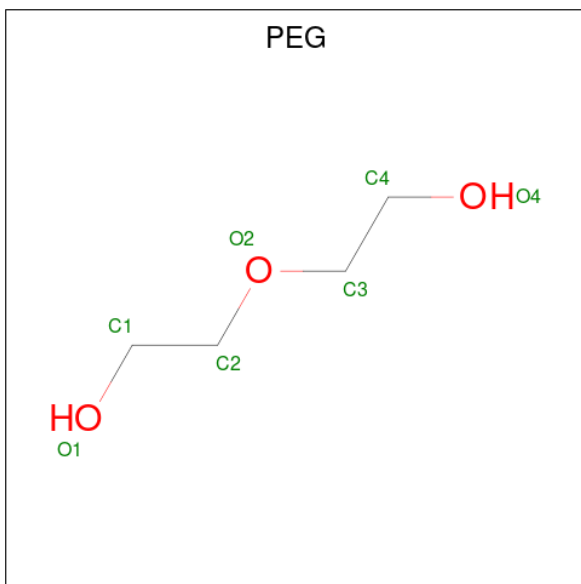
Mol	Chain	Residues	Atoms							ZeroOcc	AltConf
			Total	C	Cl	H	N	O	S		
3	A	1	Total	C	Cl	H	N	O	S	0	0
			58	25	1	24	3	4	1		

Continued on next page...

Continued from previous page...

Mol	Chain	Residues	Atoms							ZeroOcc	AltConf
			Total	C	Cl	H	N	O	S		
3	B	1	58	25	1	24	3	4	1	0	0

- Molecule 4 is DI(HYDROXYETHYL)ETHER (three-letter code: PEG) (formula: C₄H₁₀O₃).

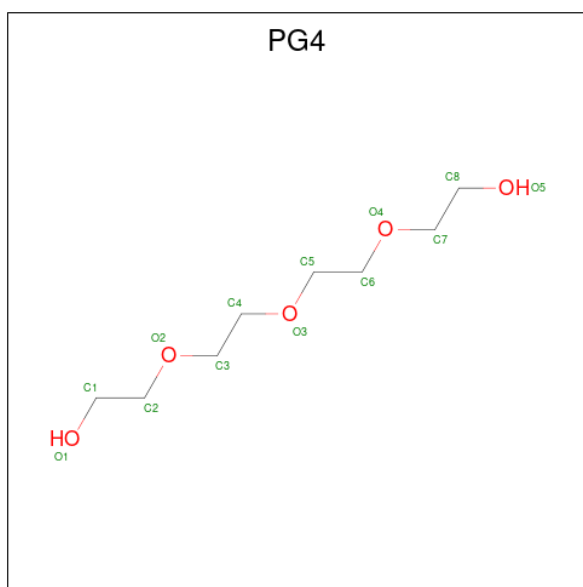


Mol	Chain	Residues	Atoms				ZeroOcc	AltConf
			Total	C	H	O		
4	A	1	17	4	10	3	0	0
4	A	1	17	4	10	3	0	0
4	A	1	17	4	10	3	0	0
4	B	1	17	4	10	3	0	0

- Molecule 5 is CHLORIDE ION (three-letter code: CL) (formula: Cl).

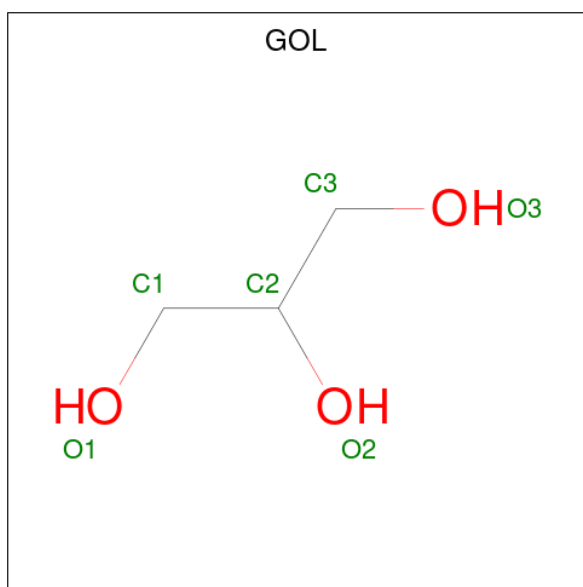
Mol	Chain	Residues	Atoms		ZeroOcc	AltConf
			Total	Cl		
5	A	2	2	2	0	0
5	B	3	3	3	0	0

- Molecule 6 is TETRAETHYLENE GLYCOL (three-letter code: PG4) (formula: C₈H₁₈O₅).



Mol	Chain	Residues	Atoms				ZeroOcc	AltConf
6	A	1	Total	C	H	O	0	0
			31	8	18	5		
6	B	1	Total	C	H	O	0	0
			31	8	18	5		
6	B	1	Total	C	H	O	0	0
			31	8	18	5		

- Molecule 7 is GLYCEROL (three-letter code: GOL) (formula: $C_3H_8O_3$).



Mol	Chain	Residues	Atoms				ZeroOcc	AltConf
7	B	1	Total	C	H	O	0	1
			14	3	8	3		

- Molecule 8 is water.

Mol	Chain	Residues	Atoms		ZeroOcc	AltConf
8	A	521	Total 521	O 521	0	36
8	B	408	Total 408	O 408	0	17

3 Residue-property plots [i](#)

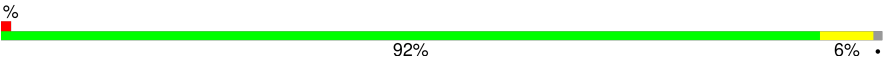
These plots are drawn for all protein, RNA, DNA and oligosaccharide chains in the entry. The first graphic for a chain summarises the proportions of the various outlier classes displayed in the second graphic. The second graphic shows the sequence view annotated by issues in geometry and electron density. Residues are color-coded according to the number of geometric quality criteria for which they contain at least one outlier: green = 0, yellow = 1, orange = 2 and red = 3 or more. A red dot above a residue indicates a poor fit to the electron density ($RSRZ > 2$). Stretches of 2 or more consecutive residues without any outlier are shown as a green connector. Residues present in the sample, but not in the model, are shown in grey.

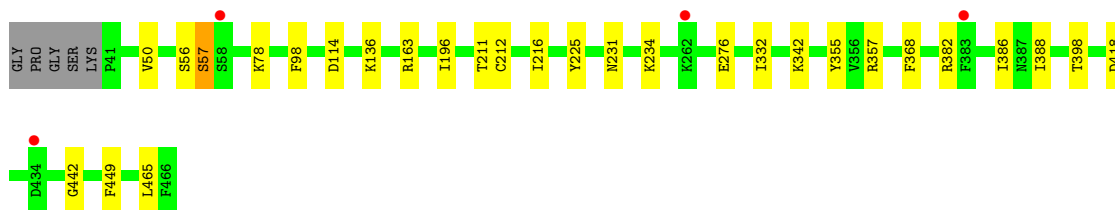
- Molecule 1: Glycylpeptide N-tetradecanoyltransferase

Chain A:  93% 6%



- Molecule 1: Glycylpeptide N-tetradecanoyltransferase

Chain B:  % 92% 6%



4 Data and refinement statistics

Property	Value	Source
Space group	P 1 21 1	Depositor
Cell constants a, b, c, α , β , γ	54.04Å 88.33Å 98.32Å 90.00° 97.67° 90.00°	Depositor
Resolution (Å)	45.79 – 1.90 45.79 – 1.90	Depositor EDS
% Data completeness (in resolution range)	99.6 (45.79-1.90) 99.6 (45.79-1.90)	Depositor EDS
R_{merge}	(Not available)	Depositor
R_{sym}	(Not available)	Depositor
$\langle I/\sigma(I) \rangle$ ¹	1.70 (at 1.89Å)	Xtrriage
Refinement program	PHENIX 1.20.1-4887	Depositor
R, R_{free}	0.148 , 0.190 0.148 , 0.190	Depositor DCC
R_{free} test set	3614 reflections (5.01%)	wwPDB-VP
Wilson B-factor (Å ²)	22.6	Xtrriage
Anisotropy	0.235	Xtrriage
Bulk solvent k_{sol} (e/Å ³), B_{sol} (Å ²)	0.40 , 61.5	EDS
L-test for twinning ²	$\langle L \rangle = 0.48$, $\langle L^2 \rangle = 0.32$	Xtrriage
Estimated twinning fraction	No twinning to report.	Xtrriage
F_o, F_c correlation	0.97	EDS
Total number of atoms	15842	wwPDB-VP
Average B, all atoms (Å ²)	32.0	wwPDB-VP

Xtrriage's analysis on translational NCS is as follows: *The largest off-origin peak in the Patterson function is 4.41% of the height of the origin peak. No significant pseudotranslation is detected.*

¹Intensities estimated from amplitudes.

²Theoretical values of $\langle |L| \rangle$, $\langle L^2 \rangle$ for acentric reflections are 0.5, 0.333 respectively for untwinned datasets, and 0.375, 0.2 for perfectly twinned datasets.

5 Model quality [i](#)

5.1 Standard geometry [i](#)

Bond lengths and bond angles in the following residue types are not validated in this section: GOL, XOF, MYA, PEG, PG4, CL

The Z score for a bond length (or angle) is the number of standard deviations the observed value is removed from the expected value. A bond length (or angle) with $|Z| > 5$ is considered an outlier worth inspection. RMSZ is the root-mean-square of all Z scores of the bond lengths (or angles).

Mol	Chain	Bond lengths		Bond angles	
		RMSZ	# $ Z > 5$	RMSZ	# $ Z > 5$
1	A	0.60	2/3714 (0.1%)	0.67	0/5014
1	B	0.51	0/3669	0.67	0/4958
All	All	0.56	2/7383 (0.0%)	0.67	0/9972

All (2) bond length outliers are listed below:

Mol	Chain	Res	Type	Atoms	Z	Observed(Å)	Ideal(Å)
1	A	212[A]	CYS	CB-SG	-10.71	1.64	1.82
1	A	212[B]	CYS	CB-SG	-10.71	1.64	1.82

There are no bond angle outliers.

There are no chirality outliers.

There are no planarity outliers.

5.2 Too-close contacts [i](#)

In the following table, the Non-H and H(model) columns list the number of non-hydrogen atoms and hydrogen atoms in the chain respectively. The H(added) column lists the number of hydrogen atoms added and optimized by MolProbity. The Clashes column lists the number of clashes within the asymmetric unit, whereas Symm-Clashes lists symmetry-related clashes.

Mol	Chain	Non-H	H(model)	H(added)	Clashes	Symm-Clashes
1	A	3630	3611	3594	12	0
1	B	3585	3549	3534	18	0
2	A	63	58	56	1	0
2	B	63	58	57	0	0
3	A	34	24	0	0	0
3	B	34	24	0	1	0
4	A	21	30	30	0	0

Continued on next page...

Continued from previous page...

Mol	Chain	Non-H	H(model)	H(added)	Clashes	Symm-Clashes
4	B	7	10	10	0	0
5	A	2	0	0	0	0
5	B	3	0	0	0	0
6	A	13	18	18	1	0
6	B	26	36	36	3	0
7	B	6	8	8	0	0
8	A	521	0	0	5	0
8	B	408	0	0	11	0
All	All	8416	7426	7343	34	0

The all-atom clashscore is defined as the number of clashes found per 1000 atoms (including hydrogen atoms). The all-atom clashscore for this structure is 2.

The worst 5 of 34 close contacts within the same asymmetric unit are listed below, sorted by their clash magnitude.

Atom-1	Atom-2	Interatomic distance (Å)	Clash overlap (Å)
1:B:442:GLY:O	8:B:601:HOH:O	2.10	0.69
1:B:57:SER:N	8:B:610:HOH:O	2.41	0.52
1:A:137:LYS:NZ	8:A:606:HOH:O	2.38	0.52
1:B:114[A]:ASP:CG	1:B:114[A]:ASP:O	2.51	0.48
6:B:509:PG4:H21	8:B:613:HOH:O	2.12	0.48

There are no symmetry-related clashes.

5.3 Torsion angles [i](#)

5.3.1 Protein backbone [i](#)

In the following table, the Percentiles column shows the percent Ramachandran outliers of the chain as a percentile score with respect to all X-ray entries followed by that with respect to entries of similar resolution.

The Analysed column shows the number of residues for which the backbone conformation was analysed, and the total number of residues.

Mol	Chain	Analysed	Favoured	Allowed	Outliers	Percentiles
1	A	437/431 (101%)	419 (96%)	17 (4%)	1 (0%)	44 36
1	B	434/431 (101%)	413 (95%)	20 (5%)	1 (0%)	44 36
All	All	871/862 (101%)	832 (96%)	37 (4%)	2 (0%)	44 36

All (2) Ramachandran outliers are listed below:

Mol	Chain	Res	Type
1	B	57	SER
1	A	57	SER

5.3.2 Protein sidechains [i](#)

In the following table, the Percentiles column shows the percent sidechain outliers of the chain as a percentile score with respect to all X-ray entries followed by that with respect to entries of similar resolution.

The Analysed column shows the number of residues for which the sidechain conformation was analysed, and the total number of residues.

Mol	Chain	Analysed	Rotameric	Outliers	Percentiles	
1	A	409/404 (101%)	403 (98%)	6 (2%)	60	59
1	B	402/404 (100%)	397 (99%)	5 (1%)	67	68
All	All	811/808 (100%)	800 (99%)	11 (1%)	65	62

5 of 11 residues with a non-rotameric sidechain are listed below:

Mol	Chain	Res	Type
1	B	98	PHE
1	B	136	LYS
1	B	342	LYS
1	B	276	GLU
1	A	322[B]	LYS

Sometimes sidechains can be flipped to improve hydrogen bonding and reduce clashes. There are no such sidechains identified.

5.3.3 RNA [i](#)

There are no RNA molecules in this entry.

5.4 Non-standard residues in protein, DNA, RNA chains [i](#)

There are no non-standard protein/DNA/RNA residues in this entry.

5.5 Carbohydrates [i](#)

There are no oligosaccharides in this entry.

5.6 Ligand geometry [i](#)

Of 17 ligands modelled in this entry, 5 are monoatomic - leaving 12 for Mogul analysis.

In the following table, the Counts columns list the number of bonds (or angles) for which Mogul statistics could be retrieved, the number of bonds (or angles) that are observed in the model and the number of bonds (or angles) that are defined in the Chemical Component Dictionary. The Link column lists molecule types, if any, to which the group is linked. The Z score for a bond length (or angle) is the number of standard deviations the observed value is removed from the expected value. A bond length (or angle) with $|Z| > 2$ is considered an outlier worth inspection. RMSZ is the root-mean-square of all Z scores of the bond lengths (or angles).

Mol	Type	Chain	Res	Link	Bond lengths			Bond angles		
					Counts	RMSZ	# Z > 2	Counts	RMSZ	# Z > 2
6	PG4	A	507	-	12,12,12	0.21	0	11,11,11	0.63	0
3	XOF	B	502	-	37,37,37	2.20	9 (24%)	50,53,53	2.17	11 (22%)
3	XOF	A	502	-	37,37,37	2.07	7 (18%)	50,53,53	2.49	17 (34%)
4	PEG	B	508	-	6,6,6	0.19	0	5,5,5	0.09	0
4	PEG	A	504	-	6,6,6	0.14	0	5,5,5	0.16	0
2	MYA	B	501	-	59,65,65	2.89	13 (22%)	72,91,91	1.31	7 (9%)
6	PG4	B	503	-	12,12,12	0.24	0	11,11,11	0.44	0
4	PEG	A	503	-	6,6,6	0.17	0	5,5,5	0.13	0
4	PEG	A	508	-	6,6,6	0.20	0	5,5,5	0.05	0
6	PG4	B	509	-	12,12,12	0.20	0	11,11,11	0.42	0
7	GOL	B	504[B]	-	5,5,5	0.91	0	5,5,5	0.91	0
2	MYA	A	501	-	59,65,65	2.84	12 (20%)	72,91,91	1.24	11 (15%)

In the following table, the Chirals column lists the number of chiral outliers, the number of chiral centers analysed, the number of these observed in the model and the number defined in the Chemical Component Dictionary. Similar counts are reported in the Torsion and Rings columns. '-' means no outliers of that kind were identified.

Mol	Type	Chain	Res	Link	Chirals	Torsions	Rings
6	PG4	A	507	-	-	4/10/10/10	-
3	XOF	B	502	-	-	8/30/40/40	0/4/4/4
3	XOF	A	502	-	-	5/30/40/40	0/4/4/4
4	PEG	B	508	-	-	1/4/4/4	-
4	PEG	A	504	-	-	3/4/4/4	-
2	MYA	B	501	-	-	2/60/80/80	0/3/3/3

Continued on next page...

Continued from previous page...

Mol	Type	Chain	Res	Link	Chirals	Torsions	Rings
6	PG4	B	503	-	-	2/10/10/10	-
4	PEG	A	503	-	-	3/4/4/4	-
4	PEG	A	508	-	-	3/4/4/4	-
6	PG4	B	509	-	-	4/10/10/10	-
7	GOL	B	504[B]	-	-	4/4/4/4	-
2	MYA	A	501	-	-	2/60/80/80	0/3/3/3

The worst 5 of 41 bond length outliers are listed below:

Mol	Chain	Res	Type	Atoms	Z	Observed(Å)	Ideal(Å)
2	B	501	MYA	C2X-C3X	-11.64	1.27	1.53
2	A	501	MYA	C2X-C3X	-11.29	1.28	1.53
2	B	501	MYA	O4X-C1X	10.82	1.55	1.40
2	A	501	MYA	O4X-C1X	9.48	1.53	1.40
3	B	502	XOF	C30-N29	7.44	1.58	1.47

The worst 5 of 46 bond angle outliers are listed below:

Mol	Chain	Res	Type	Atoms	Z	Observed(°)	Ideal(°)
3	B	502	XOF	O12-S10-O11	-8.41	106.46	119.59
3	A	502	XOF	O12-S10-O11	-7.45	107.97	119.59
3	A	502	XOF	O11-S10-N03	7.04	114.89	106.69
3	B	502	XOF	C30-N29-C33	-5.64	107.49	112.85
3	B	502	XOF	O12-S10-N03	5.47	113.06	106.69

There are no chirality outliers.

5 of 41 torsion outliers are listed below:

Mol	Chain	Res	Type	Atoms
3	A	502	XOF	C23-C28-N29-C30
3	A	502	XOF	C01-C02-N03-C04
7	B	504[B]	GOL	O1-C1-C2-C3
4	A	503	PEG	O1-C1-C2-O2
4	A	504	PEG	O1-C1-C2-O2

There are no ring outliers.

4 monomers are involved in 6 short contacts:

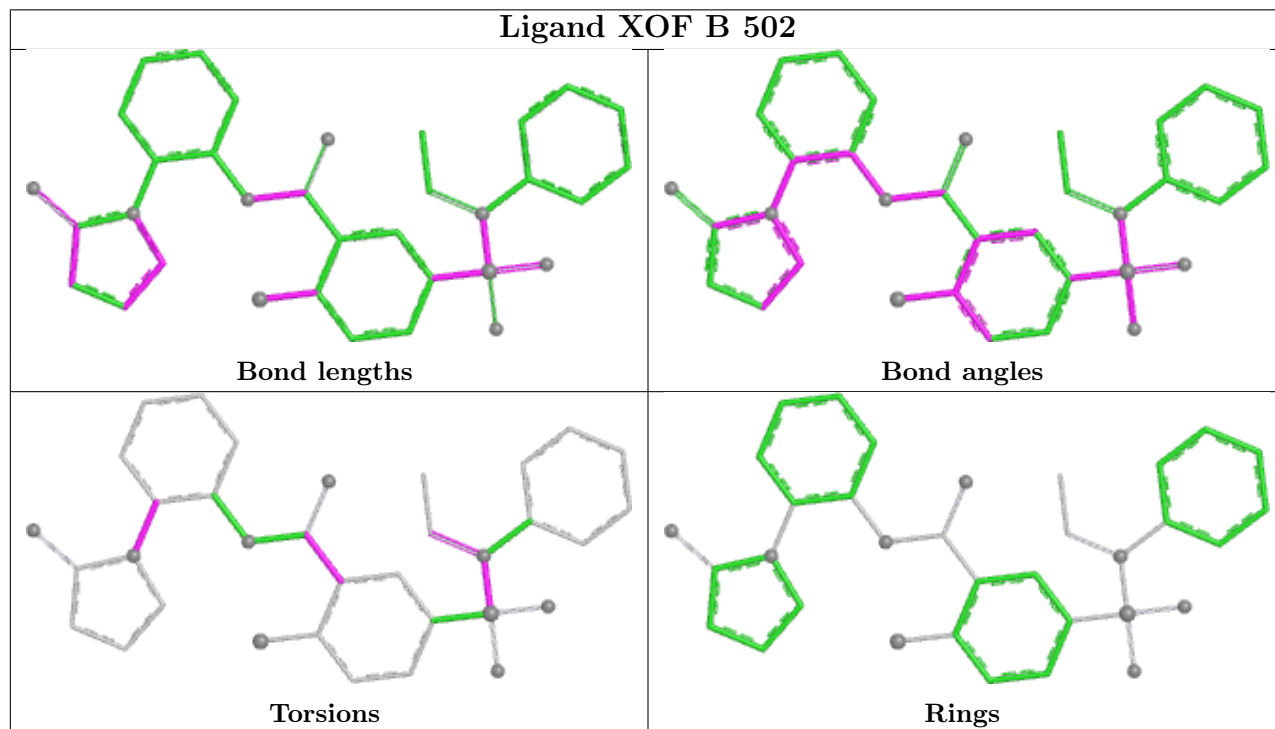
Mol	Chain	Res	Type	Clashes	Symm-Clashes
6	A	507	PG4	1	0

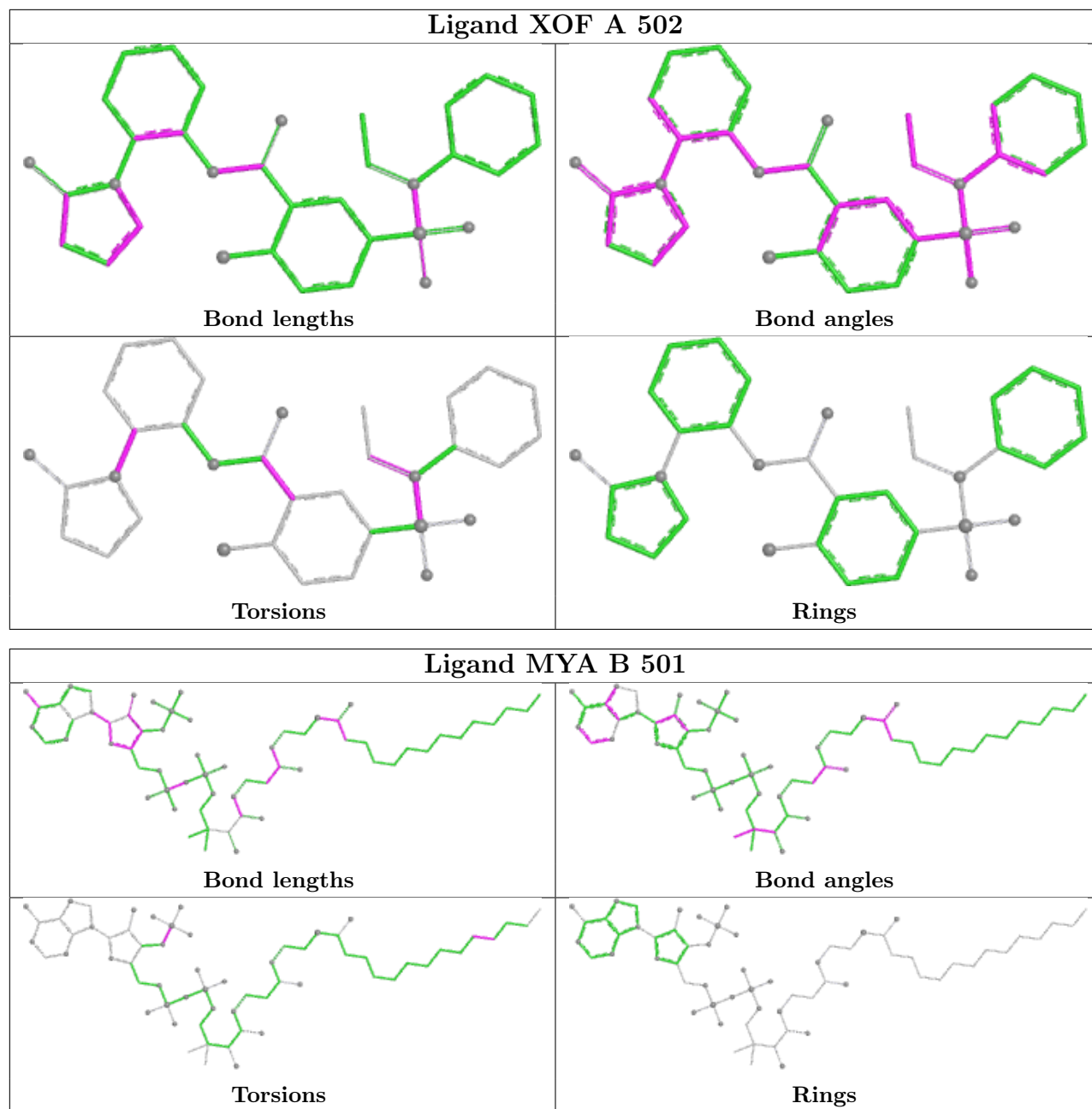
Continued on next page...

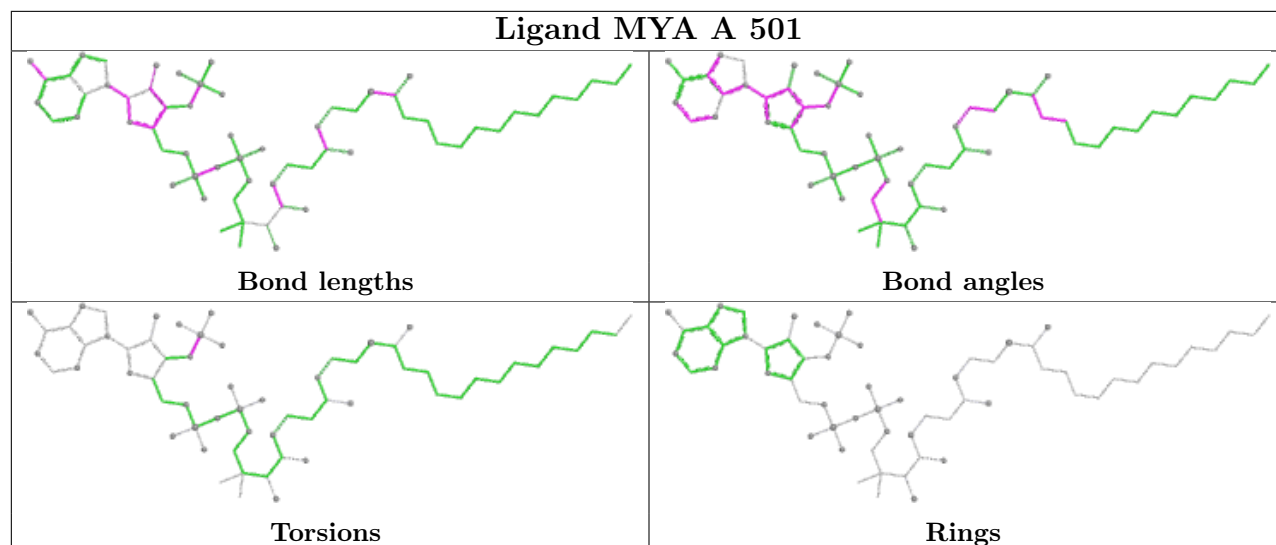
Continued from previous page...

Mol	Chain	Res	Type	Clashes	Symm-Clashes
3	B	502	XOF	1	0
6	B	509	PG4	3	0
2	A	501	MYA	1	0

The following is a two-dimensional graphical depiction of Mogul quality analysis of bond lengths, bond angles, torsion angles, and ring geometry for all instances of the Ligand of Interest. In addition, ligands with molecular weight > 250 and outliers as shown on the validation Tables will also be included. For torsion angles, if less than 5% of the Mogul distribution of torsion angles is within 10 degrees of the torsion angle in question, then that torsion angle is considered an outlier. Any bond that is central to one or more torsion angles identified as an outlier by Mogul will be highlighted in the graph. For rings, the root-mean-square deviation (RMSD) between the ring in question and similar rings identified by Mogul is calculated over all ring torsion angles. If the average RMSD is greater than 60 degrees and the minimal RMSD between the ring in question and any Mogul-identified rings is also greater than 60 degrees, then that ring is considered an outlier. The outliers are highlighted in purple. The color gray indicates Mogul did not find sufficient equivalents in the CSD to analyse the geometry.







5.7 Other polymers [i](#)

There are no such residues in this entry.

5.8 Polymer linkage issues [i](#)

There are no chain breaks in this entry.

6 Fit of model and data [i](#)

6.1 Protein, DNA and RNA chains [i](#)

In the following table, the column labelled '#RSRZ > 2' contains the number (and percentage) of RSRZ outliers, followed by percent RSRZ outliers for the chain as percentile scores relative to all X-ray entries and entries of similar resolution. The OWAB column contains the minimum, median, 95th percentile and maximum values of the occupancy-weighted average B-factor per residue. The column labelled 'Q < 0.9' lists the number of (and percentage) of residues with an average occupancy less than 0.9.

Mol	Chain	Analysed	<RSRZ>	#RSRZ>2	OWAB(Å ²)	Q<0.9
1	A	426/431 (98%)	-0.79	0 100 100	11, 25, 52, 108	14 (3%)
1	B	426/431 (98%)	-0.58	4 (0%) 81 82	11, 30, 63, 112	10 (2%)
All	All	852/862 (98%)	-0.68	4 (0%) 87 88	11, 28, 60, 112	24 (2%)

All (4) RSRZ outliers are listed below:

Mol	Chain	Res	Type	RSRZ
1	B	383	PHE	2.6
1	B	58	SER	2.4
1	B	262	LYS	2.1
1	B	434	ASP	2.1

6.2 Non-standard residues in protein, DNA, RNA chains [i](#)

There are no non-standard protein/DNA/RNA residues in this entry.

6.3 Carbohydrates [i](#)

There are no monosaccharides in this entry.

6.4 Ligands [i](#)

In the following table, the Atoms column lists the number of modelled atoms in the group and the number defined in the chemical component dictionary. The B-factors column lists the minimum, median, 95th percentile and maximum values of B factors of atoms in the group. The column labelled 'Q < 0.9' lists the number of atoms with occupancy less than 0.9.

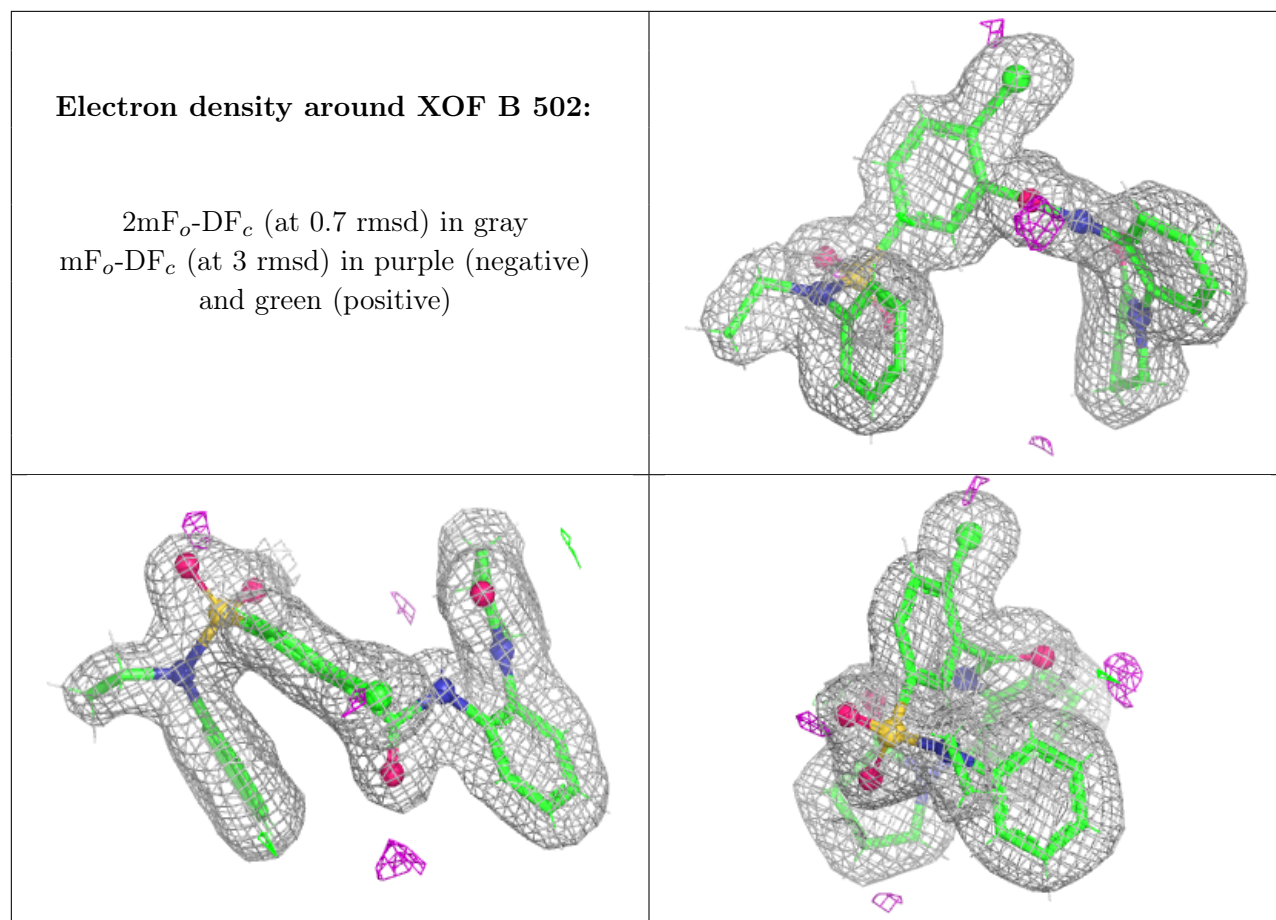
Mol	Type	Chain	Res	Atoms	RSCC	RSR	B-factors(Å ²)	Q<0.9
6	PG4	A	507	13/13	0.82	0.12	46,63,75,75	0

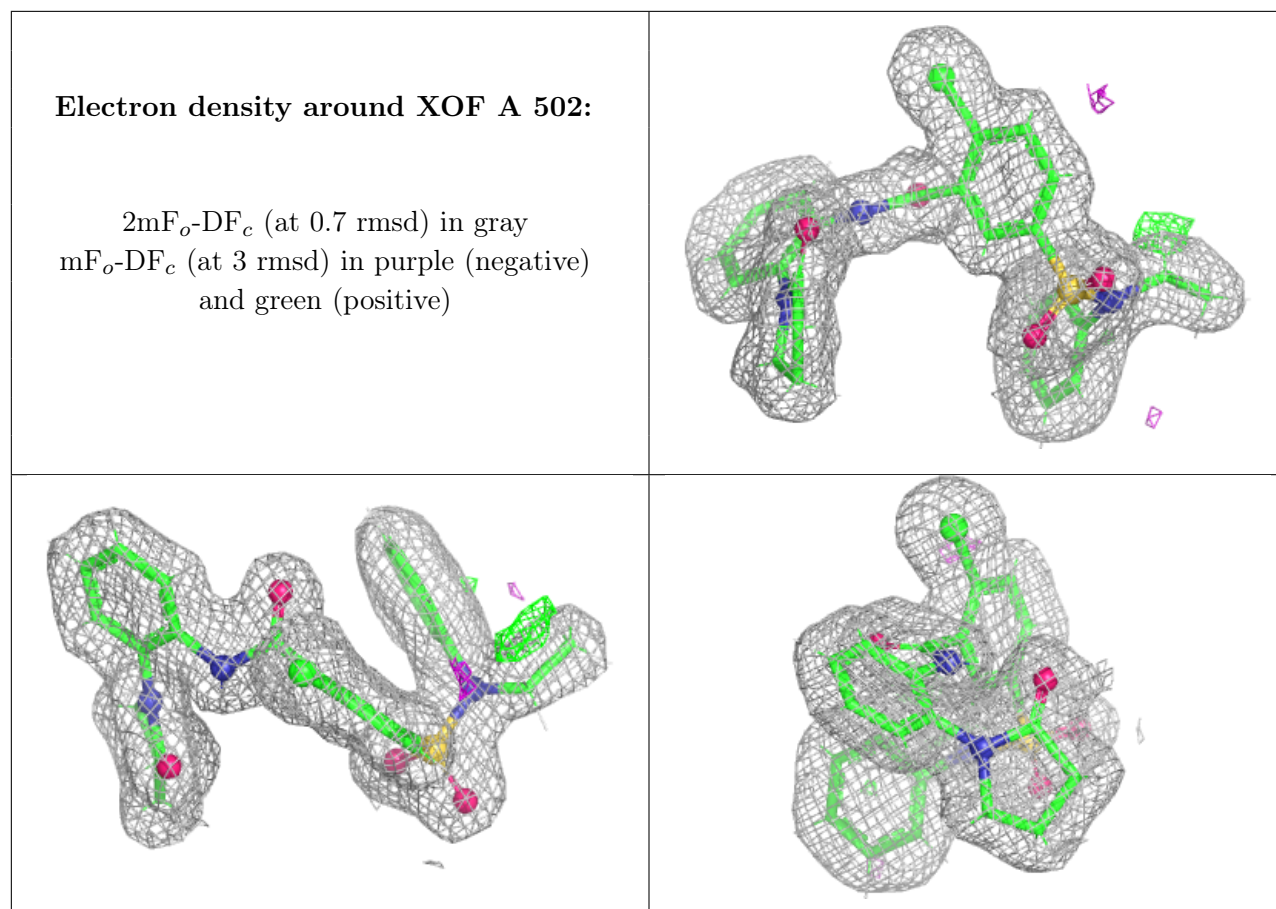
Continued on next page...

Continued from previous page...

Mol	Type	Chain	Res	Atoms	RSCC	RSR	B-factors(\AA^2)	Q<0.9
4	PEG	A	508	7/7	0.85	0.11	40,61,79,79	0
7	GOL	B	504[B]	6/6	0.85	0.11	40,52,63,68	0
6	PG4	B	509	13/13	0.86	0.10	43,53,72,80	0
4	PEG	A	503	7/7	0.86	0.10	51,62,74,74	0
4	PEG	B	508	7/7	0.88	0.09	47,57,68,74	0
4	PEG	A	504	7/7	0.89	0.09	36,60,80,87	0
6	PG4	B	503	13/13	0.90	0.09	37,57,70,74	0
5	CL	A	506	1/1	0.95	0.08	41,41,41,41	0
5	CL	B	506	1/1	0.96	0.06	41,41,41,41	0
5	CL	B	505	1/1	0.97	0.06	43,43,43,43	0
3	XOF	B	502	34/34	0.97	0.05	16,24,45,48	0
3	XOF	A	502	34/34	0.98	0.05	14,20,31,37	0
2	MYA	A	501	63/63	0.98	0.04	12,20,26,32	0
2	MYA	B	501	63/63	0.98	0.05	17,24,31,39	0
5	CL	B	507	1/1	0.98	0.09	36,36,36,36	0
5	CL	A	505	1/1	0.99	0.06	32,32,32,32	0

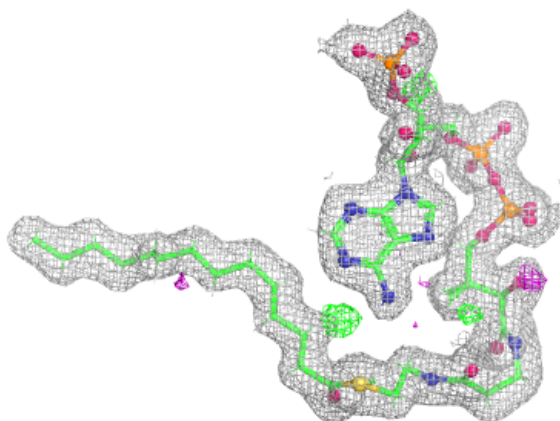
The following is a graphical depiction of the model fit to experimental electron density of all instances of the Ligand of Interest. In addition, ligands with molecular weight > 250 and outliers as shown on the geometry validation Tables will also be included. Each fit is shown from different orientation to approximate a three-dimensional view.



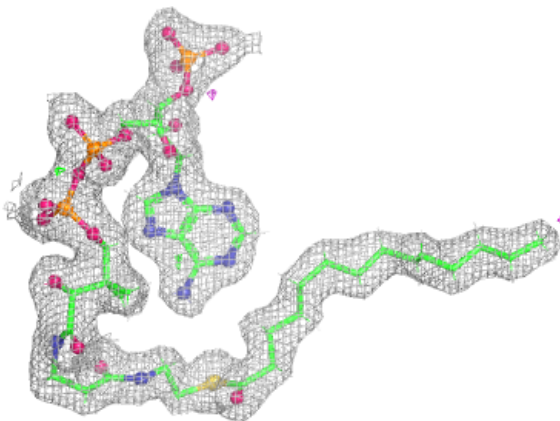


Electron density around MYA A 501:

$2mF_o-DF_c$ (at 0.7 rmsd) in gray
 mF_o-DF_c (at 3 rmsd) in purple (negative)
and green (positive)

**Electron density around MYA B 501:**

$2mF_o-DF_c$ (at 0.7 rmsd) in gray
 mF_o-DF_c (at 3 rmsd) in purple (negative)
and green (positive)



6.5 Other polymers [i](#)

There are no such residues in this entry.