



# Full wwPDB X-ray Structure Validation Report ⓘ

Sep 21, 2020 – 04:59 PM BST

PDB ID : 6FCU  
Title : The X-ray Structure of Lytic Transglycosylase Slt inactive mutant E503Q from *Pseudomonas aeruginosa* in complex with 4(NAG-NAM)pentapeptide  
Authors : Batuecas, M.T.; Dominguez-Gil, T.; Hermoso, J.A.  
Deposited on : 2017-12-21  
Resolution : 3.20 Å(reported)

This is a Full wwPDB X-ray Structure Validation Report for a publicly released PDB entry.

We welcome your comments at [validation@mail.wwpdb.org](mailto:validation@mail.wwpdb.org)

A user guide is available at

<https://www.wwpdb.org/validation/2017/XrayValidationReportHelp>

with specific help available everywhere you see the ⓘ symbol.

---

The following versions of software and data (see [references ⓘ](#)) were used in the production of this report:

MolProbity : 4.02b-467  
Mogul : 1.8.5 (274361), CSD as541be (2020)  
Xtriage (Phenix) : 1.13  
EDS : 2.14.6  
Percentile statistics : 20191225.v01 (using entries in the PDB archive December 25th 2019)  
Refmac : 5.8.0158  
CCP4 : 7.0.044 (Gargrove)  
Ideal geometry (proteins) : Engh & Huber (2001)  
Ideal geometry (DNA, RNA) : Parkinson et al. (1996)  
Validation Pipeline (wwPDB-VP) : 2.14.6

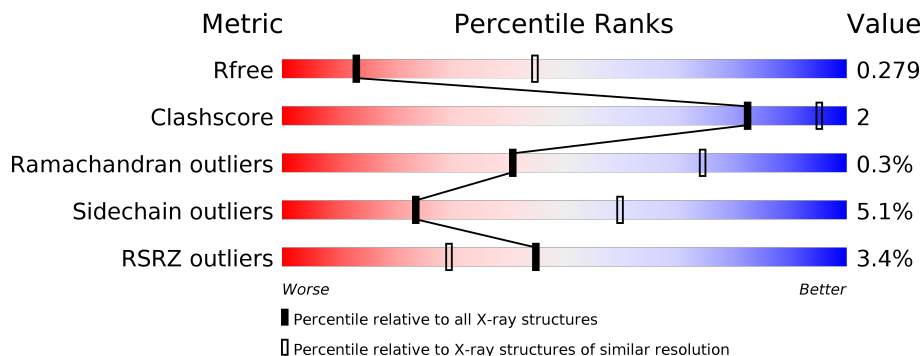
# 1 Overall quality at a glance

The following experimental techniques were used to determine the structure:

*X-RAY DIFFRACTION*

The reported resolution of this entry is 3.20 Å.

Percentile scores (ranging between 0-100) for global validation metrics of the entry are shown in the following graphic. The table shows the number of entries on which the scores are based.



Metric	Whole archive (#Entries)	Similar resolution (#Entries, resolution range(Å))
$R_{free}$	130704	1133 (3.20-3.20)
Clashscore	141614	1253 (3.20-3.20)
Ramachandran outliers	138981	1234 (3.20-3.20)
Sidechain outliers	138945	1233 (3.20-3.20)
RSRZ outliers	127900	1095 (3.20-3.20)

The table below summarises the geometric issues observed across the polymeric chains and their fit to the electron density. The red, orange, yellow and green segments on the lower bar indicate the fraction of residues that contain outliers for  $\geq 3$ , 2, 1 and 0 types of geometric quality criteria respectively. A grey segment represents the fraction of residues that are not modelled. The numeric value for each fraction is indicated below the corresponding segment, with a dot representing fractions  $\leq 5\%$ . The upper red bar (where present) indicates the fraction of residues that have poor fit to the electron density. The numeric value is given above the bar.

Mol	Chain	Length	Quality of chain
1	A	613	 3% 90% 9%
2	B	8	 63% 38%

The following table lists non-polymeric compounds, carbohydrate monomers and non-standard residues in protein, DNA, RNA chains that are outliers for geometric or electron-density-fit criteria:

Mol	Type	Chain	Res	Chirality	Geometry	Clashes	Electron density
2	NAG	B	2	-	-	-	X
5	DGL	A	712	-	-	-	X

## 2 Entry composition [i](#)

There are 6 unique types of molecules in this entry. The entry contains 5173 atoms, of which 0 are hydrogens and 0 are deuteriums.

In the tables below, the ZeroOcc column contains the number of atoms modelled with zero occupancy, the AltConf column contains the number of residues with at least one atom in alternate conformation and the Trace column contains the number of residues modelled with at most 2 atoms.

- Molecule 1 is a protein called Soluble lytic murein transglycosylase.

Mol	Chain	Residues	Atoms					ZeroOcc	AltConf	Trace
			Total	C	N	O	S			
1	A	613	4972	3154	913	894	11	0	0	0

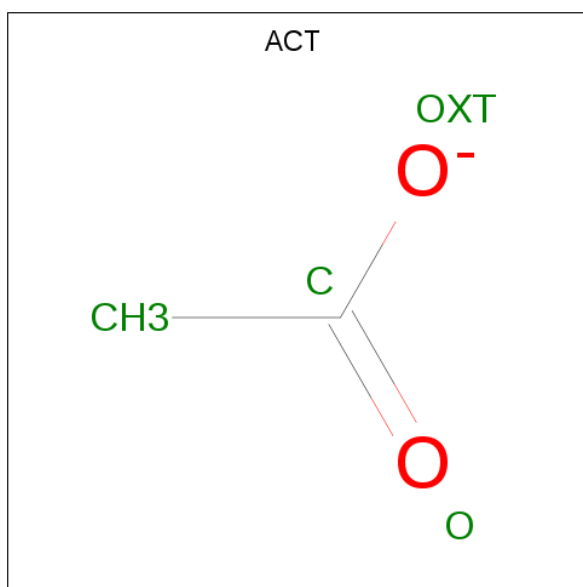
There is a discrepancy between the modelled and reference sequences:

Chain	Residue	Modelled	Actual	Comment	Reference
A	503	GLN	GLU	engineered mutation	UNP A0A069QJX4

- Molecule 2 is an oligosaccharide called 2-acetamido-2-deoxy-beta-D-glucopyranose-(1-4)-2-acetamido-3-O-[(2R)-1-amino-1-oxopropan-2-yl]-2-deoxy-beta-D-glucopyranose-(1-4)-2-acetamido-2-deoxy-beta-D-glucopyranose-(1-4)-N-acetyl-beta-muramic acid-(1-4)-2-acetamido-2-deoxy-beta-D-glucopyranose-(1-4)-N-acetyl-beta-muramic acid-(1-4)-2-acetamido-2-deoxy-beta-D-glucopyranose-(1-4)-methyl 2-acetamido-2-deoxy-beta-D-glucopyranoside.

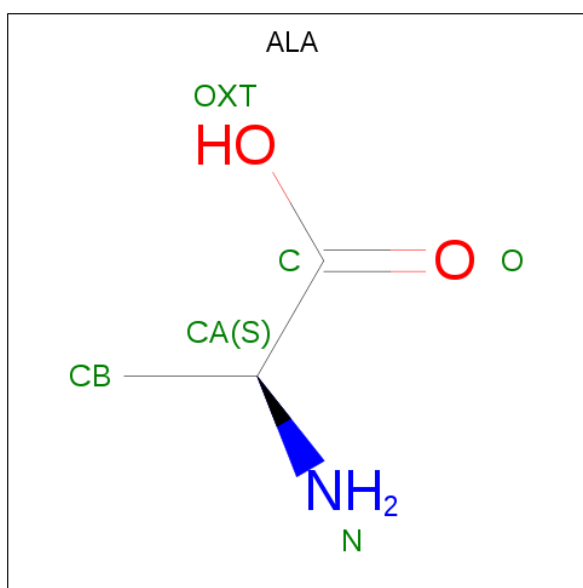
Mol	Chain	Residues	Atoms				ZeroOcc	AltConf	Trace
			Total	C	N	O			
2	B	8	127	74	9	44	0	0	0

- Molecule 3 is ACETATE ION (three-letter code: ACT) (formula: C<sub>2</sub>H<sub>3</sub>O<sub>2</sub>).



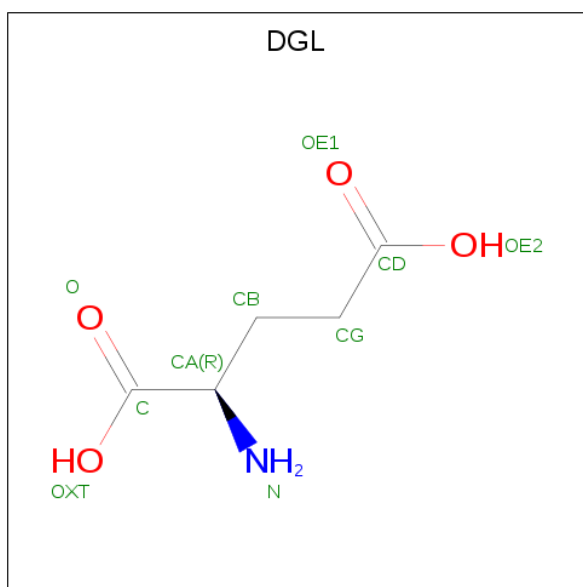
Mol	Chain	Residues	Atoms			ZeroOcc	AltConf
3	A	1	Total	C	O	0	0
			4	2	2		
3	A	1	Total	C	O	0	0
			4	2	2		

- Molecule 4 is ALANINE (three-letter code: ALA) (formula:  $C_3H_7NO_2$ ).



Mol	Chain	Residues	Atoms				ZeroOcc	AltConf
4	A	1	Total	C	N	O	0	0
			5	3	1	1		

- Molecule 5 is D-GLUTAMIC ACID (three-letter code: DGL) (formula:  $C_5H_9NO_4$ ).



Mol	Chain	Residues	Atoms				ZeroOcc	AltConf
			Total	C	N	O		
5	A	1	9	5	1	3	0	0

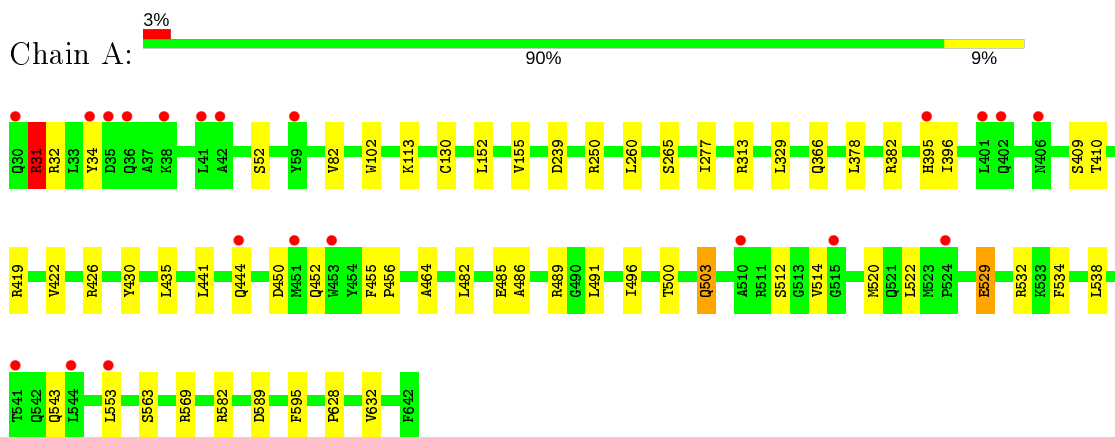
- Molecule 6 is water.

Mol	Chain	Residues	Atoms		ZeroOcc	AltConf
6	A	52	Total	O	0	0
			52	52		

### 3 Residue-property plots [i](#)

These plots are drawn for all protein, RNA, DNA and oligosaccharide chains in the entry. The first graphic for a chain summarises the proportions of the various outlier classes displayed in the second graphic. The second graphic shows the sequence view annotated by issues in geometry and electron density. Residues are color-coded according to the number of geometric quality criteria for which they contain at least one outlier: green = 0, yellow = 1, orange = 2 and red = 3 or more. A red dot above a residue indicates a poor fit to the electron density ( $RSRZ > 2$ ). Stretches of 2 or more consecutive residues without any outlier are shown as a green connector. Residues present in the sample, but not in the model, are shown in grey.

- Molecule 1: Soluble lytic murein transglycosylase



- Molecule 2: 2-acetamido-2-deoxy-beta-D-glucopyranose-(1-4)-2-acetamido-3-O-[(2R)-1-amino-1-oxopropan-2-yl]-2-deoxy-beta-D-glucopyranose-(1-4)-2-acetamido-2-deoxy-beta-D-glucopyranose-(1-4)-N-acetyl-beta-muramic acid-(1-4)-2-acetamido-2-deoxy-beta-D-glucopyranose-(1-4)-N-acetyl-beta-muramic acid-(1-4)-2-acetamido-2-deoxy-beta-D-glucopyranose-(1-4)-methyl 2-acetamido-2-deoxy-beta-D-glucopyranoside



## 4 Data and refinement statistics

Property	Value	Source
Space group	P 63	Depositor
Cell constants a, b, c, $\alpha$ , $\beta$ , $\gamma$	164.29 Å 164.29 Å 55.95 Å 90.00° 90.00° 120.00°	Depositor
Resolution (Å)	142.28 – 3.20 47.43 – 3.20	Depositor EDS
% Data completeness (in resolution range)	99.9 (142.28-3.20) 100.0 (47.43-3.20)	Depositor EDS
$R_{merge}$	(Not available)	Depositor
$R_{sym}$	(Not available)	Depositor
$\langle I/\sigma(I) \rangle$ <sup>1</sup>	1.45 (at 3.19 Å)	Xtrriage
Refinement program	REFMAC 5.8.0189	Depositor
R, $R_{free}$	0.193 , 0.272 0.201 , 0.279	Depositor DCC
$R_{free}$ test set	681 reflections (4.69%)	wwPDB-VP
Wilson B-factor (Å <sup>2</sup> )	92.2	Xtrriage
Anisotropy	0.087	Xtrriage
Bulk solvent $k_{sol}$ (e/Å <sup>3</sup> ), $B_{sol}$ (Å <sup>2</sup> )	0.33 , 61.1	EDS
L-test for twinning <sup>2</sup>	$\langle  L  \rangle = 0.49$ , $\langle L^2 \rangle = 0.32$	Xtrriage
Estimated twinning fraction	0.038 for h,-h-k,-l	Xtrriage
$F_o, F_c$ correlation	0.94	EDS
Total number of atoms	5173	wwPDB-VP
Average B, all atoms (Å <sup>2</sup> )	97.0	wwPDB-VP

Xtrriage's analysis on translational NCS is as follows: *The largest off-origin peak in the Patterson function is 3.29% of the height of the origin peak. No significant pseudotranslation is detected.*

<sup>1</sup>Intensities estimated from amplitudes.

<sup>2</sup>Theoretical values of  $\langle |L| \rangle$ ,  $\langle L^2 \rangle$  for acentric reflections are 0.5, 0.333 respectively for untwinned datasets, and 0.375, 0.2 for perfectly twinned datasets.



## 5 Model quality [i](#)

### 5.1 Standard geometry [i](#)

Bond lengths and bond angles in the following residue types are not validated in this section: NM6, NAG, DGL, MAG, ACT, AMU

The Z score for a bond length (or angle) is the number of standard deviations the observed value is removed from the expected value. A bond length (or angle) with  $|Z| > 5$  is considered an outlier worth inspection. RMSZ is the root-mean-square of all Z scores of the bond lengths (or angles).

Mol	Chain	Bond lengths		Bond angles	
		RMSZ	# Z  >5	RMSZ	# Z  >5
1	A	0.45	0/5096	0.73	2/6909 (0.0%)

There are no bond length outliers.

All (2) bond angle outliers are listed below:

Mol	Chain	Res	Type	Atoms	Z	Observed(°)	Ideal(°)
1	A	31	ARG	NE-CZ-NH1	5.92	123.26	120.30
1	A	569	ARG	NE-CZ-NH1	5.32	122.96	120.30

There are no chirality outliers.

There are no planarity outliers.

### 5.2 Too-close contacts [i](#)

In the following table, the Non-H and H(model) columns list the number of non-hydrogen atoms and hydrogen atoms in the chain respectively. The H(added) column lists the number of hydrogen atoms added and optimized by MolProbity. The Clashes column lists the number of clashes within the asymmetric unit, whereas Symm-Clashes lists symmetry related clashes.

Mol	Chain	Non-H	H(model)	H(added)	Clashes	Symm-Clashes
1	A	4972	0	4903	24	0
2	B	127	0	99	4	0
3	A	8	0	6	1	0
4	A	5	0	4	0	0
5	A	9	0	6	0	0
6	A	52	0	0	1	0
All	All	5173	0	5018	25	0

The all-atom clashscore is defined as the number of clashes found per 1000 atoms (including

hydrogen atoms). The all-atom clashscore for this structure is 2.

All (25) close contacts within the same asymmetric unit are listed below, sorted by their clash magnitude.

Atom-1	Atom-2	Interatomic distance (Å)	Clash overlap (Å)
1:A:503:GLN:HE21	1:A:503:GLN:HA	1.45	0.80
3:A:701:ACT:C	6:A:801:HOH:O	2.44	0.66
1:A:529:GLU:HG3	2:B:8:NAG:H81	1.82	0.61
1:A:313:ARG:HD2	1:A:329:LEU:HD11	1.89	0.54
1:A:500:THR:HG22	1:A:520:MET:HG2	1.89	0.54
1:A:422:VAL:O	1:A:426:ARG:HB2	2.12	0.50
1:A:130:CYS:SG	1:A:152:LEU:HD13	2.52	0.49
1:A:503:GLN:NE2	1:A:503:GLN:HA	2.23	0.48
1:A:514:VAL:HG22	2:B:5:AMU:H82	1.94	0.48
1:A:260:LEU:HD13	1:A:277:ILE:HG21	1.96	0.48
1:A:31:ARG:HH11	1:A:31:ARG:HB2	1.79	0.46
1:A:82:VAL:HG11	1:A:102:TRP:CD2	2.51	0.46
1:A:485:GLU:OE1	1:A:489:ARG:NH1	2.49	0.45
1:A:595:PHE:CE2	1:A:632:VAL:HG21	2.52	0.44
1:A:378:LEU:O	1:A:382:ARG:HG2	2.19	0.43
1:A:435:LEU:O	1:A:435:LEU:HD12	2.18	0.43
1:A:430:TYR:CE2	2:B:2:NAG:H81	2.55	0.41
1:A:512:SER:HB2	2:B:5:AMU:H81	2.01	0.41
1:A:441:LEU:HB3	1:A:464:ALA:HB2	2.02	0.41
1:A:500:THR:HG22	1:A:520:MET:CG	2.50	0.41
1:A:522:LEU:HG	1:A:553:LEU:HD11	2.02	0.41
1:A:482:LEU:HD22	1:A:496:ILE:HG22	2.03	0.41
1:A:595:PHE:CE1	1:A:632:VAL:HG11	2.56	0.41
1:A:455:PHE:HB3	1:A:456:PRO:HD3	2.02	0.40
1:A:486:ALA:HB1	1:A:491:LEU:O	2.22	0.40

There are no symmetry-related clashes.

## 5.3 Torsion angles [i](#)

### 5.3.1 Protein backbone [i](#)

In the following table, the Percentiles column shows the percent Ramachandran outliers of the chain as a percentile score with respect to all X-ray entries followed by that with respect to entries of similar resolution.

The Analysed column shows the number of residues for which the backbone conformation was analysed, and the total number of residues.

Mol	Chain	Analysed	Favoured	Allowed	Outliers	Percentiles
1	A	611/613 (100%)	572 (94%)	37 (6%)	2 (0%)	41 74

All (2) Ramachandran outliers are listed below:

Mol	Chain	Res	Type
1	A	155	VAL
1	A	628	PRO

### 5.3.2 Protein sidechains [i](#)

In the following table, the Percentiles column shows the percent sidechain outliers of the chain as a percentile score with respect to all X-ray entries followed by that with respect to entries of similar resolution.

The Analysed column shows the number of residues for which the sidechain conformation was analysed, and the total number of residues.

Mol	Chain	Analysed	Rotameric	Outliers	Percentiles
1	A	507/507 (100%)	481 (95%)	26 (5%)	24 60

All (26) residues with a non-rotameric sidechain are listed below:

Mol	Chain	Res	Type
1	A	31	ARG
1	A	32	ARG
1	A	34	TYR
1	A	52	SER
1	A	113	LYS
1	A	239	ASP
1	A	250	ARG
1	A	265	SER
1	A	366	GLN
1	A	395	HIS
1	A	396	ILE
1	A	409	SER
1	A	410	THR
1	A	419	ARG
1	A	444	GLN
1	A	450	ASP
1	A	452	GLN
1	A	503	GLN
1	A	529	GLU

*Continued on next page...*

*Continued from previous page...*

Mol	Chain	Res	Type
1	A	532	ARG
1	A	534	PHE
1	A	538	LEU
1	A	543	GLN
1	A	563	SER
1	A	582	ARG
1	A	589	ASP

Some sidechains can be flipped to improve hydrogen bonding and reduce clashes. All (3) such sidechains are listed below:

Mol	Chain	Res	Type
1	A	347	GLN
1	A	355	GLN
1	A	577	ASN

### 5.3.3 RNA [i](#)

There are no RNA molecules in this entry.

### 5.4 Non-standard residues in protein, DNA, RNA chains [i](#)

There are no non-standard protein/DNA/RNA residues in this entry.

### 5.5 Carbohydrates [i](#)

8 monosaccharides are modelled in this entry.

In the following table, the Counts columns list the number of bonds (or angles) for which Mogul statistics could be retrieved, the number of bonds (or angles) that are observed in the model and the number of bonds (or angles) that are defined in the Chemical Component Dictionary. The Link column lists molecule types, if any, to which the group is linked. The Z score for a bond length (or angle) is the number of standard deviations the observed value is removed from the expected value. A bond length (or angle) with  $|Z| > 2$  is considered an outlier worth inspection. RMSZ is the root-mean-square of all Z scores of the bond lengths (or angles).

Mol	Type	Chain	Res	Link	Bond lengths			Bond angles		
					Counts	RMSZ	# Z  > 2	Counts	RMSZ	# Z  > 2
2	MAG	B	1	2	16,16,16	2.64	2 (12%)	22,22,22	2.25	7 (31%)
2	NAG	B	2	2	14,14,15	2.43	6 (42%)	17,19,21	4.09	8 (47%)
2	AMU	B	3	2	17,18,20	1.66	4 (23%)	21,24,28	3.79	9 (42%)

Mol	Type	Chain	Res	Link	Bond lengths			Bond angles		
					Counts	RMSZ	# Z  > 2	Counts	RMSZ	# Z  > 2
2	NAG	B	4	2	14,14,15	1.40	3 (21%)	17,19,21	2.89	7 (41%)
2	AMU	B	5	2,4	17,18,20	1.93	5 (29%)	21,24,28	2.92	8 (38%)
2	NAG	B	6	2	14,14,15	1.18	1 (7%)	17,19,21	1.95	4 (23%)
2	NM6	B	7	2	19,19,20	1.76	3 (15%)	22,26,28	1.96	9 (40%)
2	NAG	B	8	2	14,14,15	0.90	0	17,19,21	1.31	3 (17%)

In the following table, the Chirals column lists the number of chiral outliers, the number of chiral centers analysed, the number of these observed in the model and the number defined in the Chemical Component Dictionary. Similar counts are reported in the Torsion and Rings columns. '-' means no outliers of that kind were identified.

Mol	Type	Chain	Res	Link	Chirals	Torsions	Rings
2	MAG	B	1	2	-	5/8/28/28	0/1/1/1
2	NAG	B	2	2	-	3/6/23/26	0/1/1/1
2	AMU	B	3	2	-	4/10/29/34	0/1/1/1
2	NAG	B	4	2	-	2/6/23/26	0/1/1/1
2	AMU	B	5	2,4	-	3/10/29/34	0/1/1/1
2	NAG	B	6	2	-	1/6/23/26	0/1/1/1
2	NM6	B	7	2	-	3/14/31/34	0/1/1/1
2	NAG	B	8	2	-	2/6/23/26	0/1/1/1

All (24) bond length outliers are listed below:

Mol	Chain	Res	Type	Atoms	Z	Observed(Å)	Ideal(Å)
2	B	1	MAG	O7-C7	8.92	1.43	1.23
2	B	7	NM6	C3C-N3A	5.80	1.47	1.32
2	B	2	NAG	O4-C4	5.11	1.55	1.43
2	B	2	NAG	C7-N2	4.16	1.48	1.34
2	B	5	AMU	C1-C2	3.68	1.57	1.52
2	B	5	AMU	C3-C2	3.53	1.57	1.52
2	B	2	NAG	C1-C2	3.36	1.57	1.52
2	B	2	NAG	O5-C1	3.25	1.48	1.43
2	B	5	AMU	O3-C9	-3.25	1.39	1.45
2	B	6	NAG	C1-C2	3.24	1.57	1.52
2	B	5	AMU	C7-N2	3.11	1.45	1.34
2	B	3	AMU	C3-C2	2.71	1.56	1.52
2	B	7	NM6	C4-C5	2.62	1.58	1.53
2	B	3	AMU	C4-C5	2.47	1.58	1.53
2	B	1	MAG	O4-C4	2.41	1.48	1.43

*Continued on next page...*

*Continued from previous page...*

Mol	Chain	Res	Type	Atoms	Z	Observed(Å)	Ideal(Å)
2	B	2	NAG	O5-C5	2.38	1.48	1.43
2	B	3	AMU	O5-C5	2.29	1.48	1.43
2	B	4	NAG	C4-C5	2.24	1.57	1.53
2	B	7	NM6	O3-C3A	-2.13	1.39	1.44
2	B	4	NAG	C8-C7	2.11	1.54	1.50
2	B	5	AMU	C11-C9	2.09	1.55	1.51
2	B	3	AMU	C8-C7	2.05	1.54	1.50
2	B	2	NAG	C2-N2	2.04	1.49	1.46
2	B	4	NAG	O5-C1	2.01	1.46	1.43

All (55) bond angle outliers are listed below:

Mol	Chain	Res	Type	Atoms	Z	Observed(°)	Ideal(°)
2	B	2	NAG	C1-O5-C5	12.18	128.69	112.19
2	B	3	AMU	C2-N2-C7	11.47	139.23	122.90
2	B	4	NAG	C1-O5-C5	7.98	123.00	112.19
2	B	5	AMU	C1-C2-C3	6.71	118.74	109.17
2	B	2	NAG	C4-C3-C2	-6.21	101.92	111.02
2	B	3	AMU	O5-C1-C2	-6.02	101.78	111.29
2	B	1	MAG	C1-O5-C5	5.97	125.41	113.69
2	B	4	NAG	C2-N2-C7	5.64	130.93	122.90
2	B	5	AMU	C1-O5-C5	5.59	119.76	112.19
2	B	1	MAG	CM-O1-C1	5.47	121.71	113.27
2	B	6	NAG	C1-O5-C5	5.43	119.54	112.19
2	B	5	AMU	O7-C7-C8	-5.41	112.02	122.06
2	B	3	AMU	C1-C2-C3	-5.37	101.50	109.17
2	B	3	AMU	C1-O5-C5	4.90	118.83	112.19
2	B	2	NAG	C2-N2-C7	4.84	129.80	122.90
2	B	5	AMU	O5-C5-C4	-4.18	100.66	110.83
2	B	3	AMU	C3-C2-N2	4.12	118.20	110.58
2	B	2	NAG	O5-C5-C6	4.11	113.65	107.20
2	B	3	AMU	O3-C3-C4	4.08	118.13	107.28
2	B	2	NAG	O7-C7-C8	-3.94	114.74	122.06
2	B	5	AMU	O7-C7-N2	3.93	129.18	121.95
2	B	7	NM6	O5-C1-C2	-3.93	105.09	111.29
2	B	5	AMU	O5-C5-C6	3.80	113.16	107.20
2	B	3	AMU	O5-C5-C6	3.75	113.08	107.20
2	B	2	NAG	O7-C7-N2	3.46	128.31	121.95
2	B	3	AMU	C3-C4-C5	3.36	116.83	109.66
2	B	2	NAG	O4-C4-C5	3.35	117.62	109.30
2	B	1	MAG	O1-C1-C2	3.24	113.11	108.14
2	B	7	NM6	O5-C5-C6	-3.10	102.34	107.20

*Continued on next page...*

*Continued from previous page...*

Mol	Chain	Res	Type	Atoms	Z	Observed(°)	Ideal(°)
2	B	8	NAG	O7-C7-N2	2.93	127.34	121.95
2	B	6	NAG	O5-C5-C6	-2.90	102.67	107.20
2	B	5	AMU	O5-C1-C2	-2.76	106.92	111.29
2	B	7	NM6	C1-O5-C5	2.74	115.90	112.19
2	B	4	NAG	C3-C4-C5	-2.72	105.39	110.24
2	B	4	NAG	O7-C7-C8	-2.70	117.03	122.06
2	B	2	NAG	C1-C2-N2	2.67	115.04	110.49
2	B	8	NAG	C2-N2-C7	2.54	126.51	122.90
2	B	7	NM6	O3-C3-C2	2.53	114.77	108.85
2	B	7	NM6	O3-C3A-C3B	2.50	114.78	107.56
2	B	1	MAG	O5-C1-C2	-2.46	105.77	110.58
2	B	5	AMU	C1-C2-N2	-2.45	106.30	110.49
2	B	7	NM6	O7-C7-N2	2.44	126.44	121.95
2	B	7	NM6	O3-C3-C4	2.44	113.77	107.28
2	B	6	NAG	O7-C7-C8	-2.41	117.58	122.06
2	B	3	AMU	O7-C7-C8	-2.33	117.72	122.06
2	B	4	NAG	C8-C7-N2	2.28	119.96	116.10
2	B	7	NM6	C4-C3-C2	-2.23	107.29	111.18
2	B	8	NAG	O7-C7-C8	-2.23	117.91	122.06
2	B	1	MAG	C1-C2-N2	-2.22	107.17	111.00
2	B	1	MAG	C8-C7-N2	2.21	119.84	116.10
2	B	1	MAG	O5-C1-O1	2.19	116.06	110.97
2	B	7	NM6	O4-C4-C5	2.16	114.66	109.30
2	B	4	NAG	C6-C5-C4	2.11	117.95	113.00
2	B	6	NAG	O3-C3-C2	-2.09	105.14	109.47
2	B	4	NAG	O5-C5-C6	2.02	110.38	107.20

There are no chirality outliers.

All (23) torsion outliers are listed below:

Mol	Chain	Res	Type	Atoms
2	B	3	AMU	C3-C2-N2-C7
2	B	3	AMU	C10-C9-O3-C3
2	B	1	MAG	C2-C1-O1-CM
2	B	7	NM6	O3-C3A-C3C-N3A
2	B	4	NAG	C4-C5-C6-O6
2	B	2	NAG	O5-C5-C6-O6
2	B	1	MAG	O5-C1-O1-CM
2	B	4	NAG	O5-C5-C6-O6
2	B	2	NAG	C4-C5-C6-O6
2	B	2	NAG	C1-C2-N2-C7
2	B	3	AMU	C4-C5-C6-O6

*Continued on next page...*

*Continued from previous page...*

Mol	Chain	Res	Type	Atoms
2	B	6	NAG	O5-C5-C6-O6
2	B	1	MAG	O5-C5-C6-O6
2	B	1	MAG	C4-C5-C6-O6
2	B	7	NM6	C4-C5-C6-O6
2	B	1	MAG	C1-C2-N2-C7
2	B	8	NAG	O5-C5-C6-O6
2	B	3	AMU	O5-C5-C6-O6
2	B	7	NM6	O5-C5-C6-O6
2	B	5	AMU	O5-C5-C6-O6
2	B	5	AMU	C11-C9-O3-C3
2	B	8	NAG	C3-C2-N2-C7
2	B	5	AMU	C4-C5-C6-O6

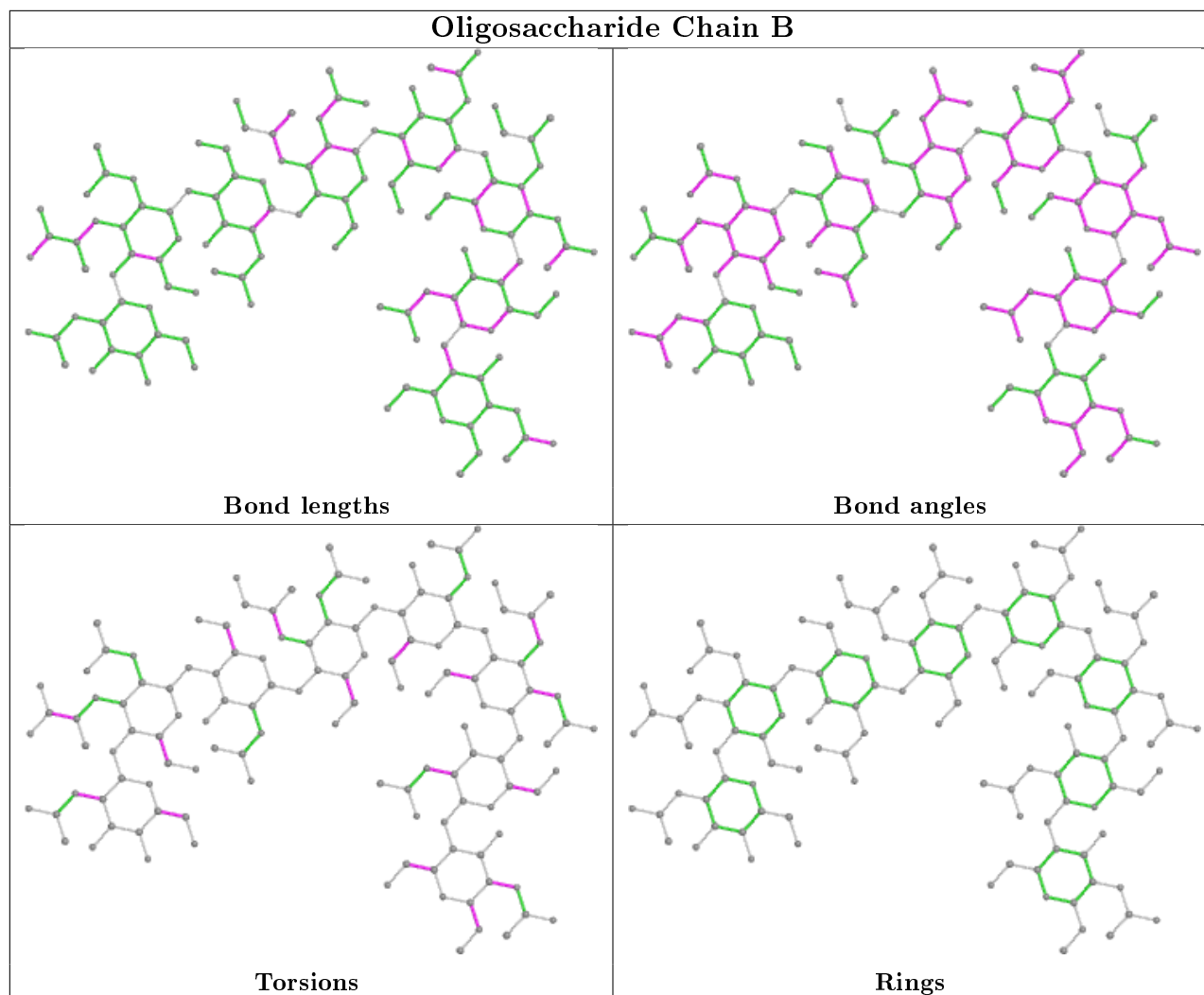
There are no ring outliers.

3 monomers are involved in 4 short contacts:

Mol	Chain	Res	Type	Clashes	Symm-Clashes
2	B	2	NAG	1	0
2	B	8	NAG	1	0
2	B	5	AMU	2	0

The following is a two-dimensional graphical depiction of Mogul quality analysis of bond lengths, bond angles, torsion angles, and ring geometry for oligosaccharide.





## 5.6 Ligand geometry [\(i\)](#)

4 ligands are modelled in this entry.

In the following table, the Counts columns list the number of bonds (or angles) for which Mogul statistics could be retrieved, the number of bonds (or angles) that are observed in the model and the number of bonds (or angles) that are defined in the Chemical Component Dictionary. The Link column lists molecule types, if any, to which the group is linked. The Z score for a bond length (or angle) is the number of standard deviations the observed value is removed from the expected value. A bond length (or angle) with  $|Z| > 2$  is considered an outlier worth inspection. RMSZ is the root-mean-square of all Z scores of the bond lengths (or angles).

Mol	Type	Chain	Res	Link	Bond lengths			Bond angles		
					Counts	RMSZ	$\# Z  > 2$	Counts	RMSZ	$\# Z  > 2$
3	ACT	A	702	-	1,3,3	2.36	1 (100%)	0,3,3	0.00	-
3	ACT	A	701	-	1,3,3	1.43	0	0,3,3	0.00	-
5	DGL	A	712	4	4,8,9	0.60	0	2,9,11	1.30	0
4	ALA	A	711	2,5	3,4,5	0.53	0	2,4,6	1.13	0

In the following table, the Chirals column lists the number of chiral outliers, the number of chiral centers analysed, the number of these observed in the model and the number defined in the Chemical Component Dictionary. Similar counts are reported in the Torsion and Rings columns. '-' means no outliers of that kind were identified.

Mol	Type	Chain	Res	Link	Chirals	Torsions	Rings
4	ALA	A	711	2,5	-	0/0/2/4	-
5	DGL	A	712	4	-	2/3/8/9	-

All (1) bond length outliers are listed below:

Mol	Chain	Res	Type	Atoms	Z	Observed(Å)	Ideal(Å)
3	A	702	ACT	CH3-C	2.36	1.51	1.48

There are no bond angle outliers.

There are no chirality outliers.

All (2) torsion outliers are listed below:

Mol	Chain	Res	Type	Atoms
5	A	712	DGL	N-CA-CB-CG
5	A	712	DGL	C-CA-CB-CG

There are no ring outliers.

1 monomer is involved in 1 short contact:

Mol	Chain	Res	Type	Clashes	Symm-Clashes
3	A	701	ACT	1	0

## 5.7 Other polymers [i](#)

There are no such residues in this entry.

## 5.8 Polymer linkage issues [i](#)

There are no chain breaks in this entry.

## 6 Fit of model and data [i](#)

### 6.1 Protein, DNA and RNA chains [i](#)

In the following table, the column labelled ‘#RSRZ> 2’ contains the number (and percentage) of RSRZ outliers, followed by percent RSRZ outliers for the chain as percentile scores relative to all X-ray entries and entries of similar resolution. The OWAB column contains the minimum, median, 95<sup>th</sup> percentile and maximum values of the occupancy-weighted average B-factor per residue. The column labelled ‘Q< 0.9’ lists the number of (and percentage) of residues with an average occupancy less than 0.9.

Mol	Chain	Analysed	<RSRZ>	#RSRZ>2	OWAB(Å <sup>2</sup> )	Q<0.9
1	A	613/613 (100%)	0.14	21 (3%) 45 29	58, 89, 142, 172	0

All (21) RSRZ outliers are listed below:

Mol	Chain	Res	Type	RSRZ
1	A	544	LEU	4.2
1	A	36	GLN	2.9
1	A	59	TYR	2.9
1	A	34	TYR	2.7
1	A	541	THR	2.6
1	A	451	MET	2.5
1	A	402	GLN	2.4
1	A	444	GLN	2.4
1	A	515	GLY	2.3
1	A	553	LEU	2.3
1	A	41	LEU	2.2
1	A	395	HIS	2.2
1	A	30	GLN	2.2
1	A	406	ASN	2.2
1	A	524	PRO	2.1
1	A	401	LEU	2.1
1	A	453	TRP	2.1
1	A	510	ALA	2.1
1	A	42	ALA	2.1
1	A	35	ASP	2.1
1	A	38	LYS	2.0

### 6.2 Non-standard residues in protein, DNA, RNA chains [i](#)

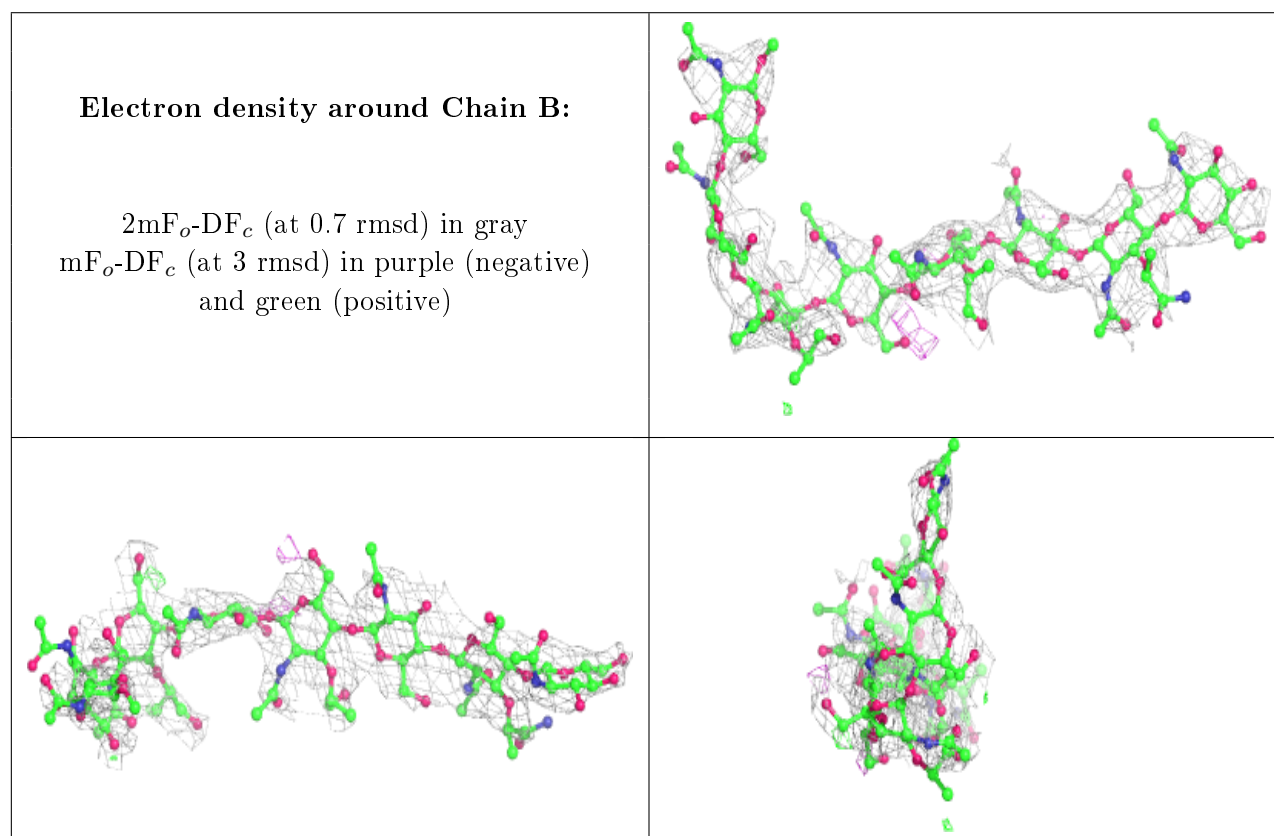
There are no non-standard protein/DNA/RNA residues in this entry.

### 6.3 Carbohydrates i

In the following table, the Atoms column lists the number of modelled atoms in the group and the number defined in the chemical component dictionary. The B-factors column lists the minimum, median, 95<sup>th</sup> percentile and maximum values of B factors of atoms in the group. The column labelled 'Q<0.9' lists the number of atoms with occupancy less than 0.9.

Mol	Type	Chain	Res	Atoms	RSCC	RSR	B-factors(Å <sup>2</sup> )	Q<0.9
2	NAG	B	2	14/15	0.51	0.49	140,179,189,195	0
2	AMU	B	3	18/20	0.68	0.32	120,155,169,172	0
2	NAG	B	8	14/15	0.81	0.34	138,144,146,150	0
2	MAG	B	1	16/16	0.82	0.38	124,154,165,172	0
2	NAG	B	4	14/15	0.85	0.34	133,143,149,152	0
2	NM6	B	7	19/20	0.87	0.33	132,145,154,155	0
2	AMU	B	5	18/20	0.93	0.26	112,121,143,151	0
2	NAG	B	6	14/15	0.94	0.27	103,120,134,142	0

The following is a graphical depiction of the model fit to experimental electron density for oligosaccharide. Each fit is shown from different orientation to approximate a three-dimensional view.



## 6.4 Ligands [i](#)

In the following table, the Atoms column lists the number of modelled atoms in the group and the number defined in the chemical component dictionary. The B-factors column lists the minimum, median, 95<sup>th</sup> percentile and maximum values of B factors of atoms in the group. The column labelled 'Q<0.9' lists the number of atoms with occupancy less than 0.9.

Mol	Type	Chain	Res	Atoms	RSCC	RSR	B-factors(Å <sup>2</sup> )	Q<0.9
5	DGL	A	712	9/10	0.45	0.63	124,141,152,155	0
3	ACT	A	701	4/4	0.81	0.30	95,100,102,105	0
4	ALA	A	711	5/6	0.87	0.26	142,142,151,152	0
3	ACT	A	702	4/4	0.89	0.43	79,81,83,84	0

## 6.5 Other polymers [i](#)

There are no such residues in this entry.