



## wwPDB EM Validation Summary Report ⓘ

Nov 6, 2024 – 04:16 am GMT

PDB ID : 9FD2  
EMDB ID : EMD-50325  
Title : Structure of Pol II-TC-NER-STK19 complex  
Authors : Lee, S.-H.; Sixma, T.K.  
Deposited on : 2024-05-16  
Resolution : 3.40 Å (reported)

This is a wwPDB EM Validation Summary Report for a publicly released PDB entry.

We welcome your comments at [validation@mail.wwpdb.org](mailto:validation@mail.wwpdb.org)

A user guide is available at

<https://www.wwpdb.org/validation/2017/EMValidationReportHelp>

with specific help available everywhere you see the ⓘ symbol.

The types of validation reports are described at

<http://www.wwpdb.org/validation/2017/FAQs#types>.

---

The following versions of software and data (see [references ⓘ](#)) were used in the production of this report:

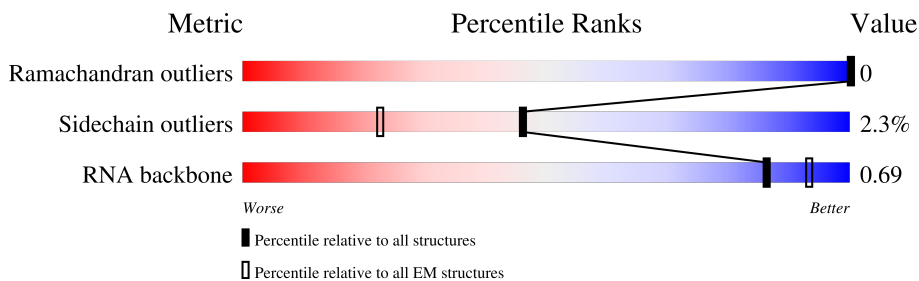
EMDB validation analysis : 0.0.1.dev113  
MolProbity : 4.02b-467  
Percentile statistics : 20231227.v01 (using entries in the PDB archive December 27th 2023)  
MapQ : 1.9.13  
Ideal geometry (proteins) : Engh & Huber (2001)  
Ideal geometry (DNA, RNA) : Parkinson et al. (1996)  
Validation Pipeline (wwPDB-VP) : 2.39

# 1 Overall quality at a glance

The following experimental techniques were used to determine the structure:  
*ELECTRON MICROSCOPY*

The reported resolution of this entry is 3.40 Å.

Percentile scores (ranging between 0-100) for global validation metrics of the entry are shown in the following graphic. The table shows the number of entries on which the scores are based.



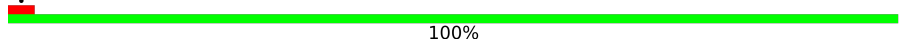






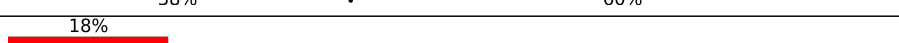
| Metric                | Whole archive<br>(#Entries) | EM structures<br>(#Entries) |
|-----------------------|-----------------------------|-----------------------------|
| Ramachandran outliers | 207382                      | 16835                       |
| Sidechain outliers    | 206894                      | 16415                       |
| RNA backbone          | 6643                        | 2191                        |

The table below summarises the geometric issues observed across the polymeric chains and their fit to the map. The red, orange, yellow and green segments of the bar indicate the fraction of residues that contain outliers for  $\geq 3$ , 2, 1 and 0 types of geometric quality criteria respectively. A grey segment represents the fraction of residues that are not modelled. The numeric value for each fraction is indicated below the corresponding segment, with a dot representing fractions  $\leq 5\%$ . The upper red bar (where present) indicates the fraction of residues that have poor fit to the EM map (all-atom inclusion  $< 40\%$ ). The numeric value is given above the bar.

| Mol | Chain | Length | Quality of chain |
|-----|-------|--------|------------------|
| 1   | A     | 1970   |                  |
| 2   | B     | 1300   |                  |
| 3   | C     | 275    |                  |
| 4   | D     | 142    |                  |
| 5   | E     | 210    |                  |
| 6   | F     | 127    |                  |
| 7   | G     | 172    |                  |
| 8   | H     | 150    |                  |

Continued on next page...

Continued from previous page...

| Mol | Chain | Length | Quality of chain   |
|-----|-------|--------|--|
| 9   | I     | 125    |    |
| 10  | J     | 67     |    |
| 11  | K     | 117    |    |
| 12  | L     | 58     |    |
| 13  | f     | 85     |    |
| 14  | N     | 60     |    |
| 15  | M     | 25     |    |
| 16  | T     | 60     |    |
| 17  | a     | 408    |    |
| 18  | b     | 1160   |    |
| 19  | c     | 152    |    |
| 20  | g     | 257    |    |
| 21  | e     | 1493   |  |
| 22  | d     | 729    |  |

## 2 Entry composition [i](#)

There are 24 unique types of molecules in this entry. The entry contains 51949 atoms, of which 0 are hydrogens and 0 are deuteriums.

In the tables below, the AltConf column contains the number of residues with at least one atom in alternate conformation and the Trace column contains the number of residues modelled with at most 2 atoms.

- Molecule 1 is a protein called DNA-directed RNA polymerase subunit.

| Mol | Chain | Residues | Atoms |      |      |      |    | AltConf | Trace |
|-----|-------|----------|-------|------|------|------|----|---------|-------|
|     |       |          | Total | C    | N    | O    | S  |         |       |
| 1   | A     | 1409     | 11161 | 7022 | 1998 | 2070 | 71 | 0       | 0     |

- Molecule 2 is a protein called DNA-directed RNA polymerase subunit beta.

| Mol | Chain | Residues | Atoms |      |      |      |    | AltConf | Trace |
|-----|-------|----------|-------|------|------|------|----|---------|-------|
|     |       |          | Total | C    | N    | O    | S  |         |       |
| 2   | B     | 1130     | 9048  | 5725 | 1591 | 1668 | 64 | 0       | 0     |

- Molecule 3 is a protein called DNA-directed RNA polymerase II subunit RPB3.

| Mol | Chain | Residues | Atoms |      |     |     |   | AltConf | Trace |
|-----|-------|----------|-------|------|-----|-----|---|---------|-------|
|     |       |          | Total | C    | N   | O   | S |         |       |
| 3   | C     | 260      | 2089  | 1309 | 359 | 415 | 6 | 0       | 0     |

- Molecule 4 is a protein called RNA polymerase II subunit D.

| Mol | Chain | Residues | Atoms |     |     |     |   | AltConf | Trace |
|-----|-------|----------|-------|-----|-----|-----|---|---------|-------|
|     |       |          | Total | C   | N   | O   | S |         |       |
| 4   | D     | 128      | 1050  | 656 | 178 | 212 | 4 | 0       | 0     |

- Molecule 5 is a protein called DNA-directed RNA polymerase II subunit E.

| Mol | Chain | Residues | Atoms |      |     |     |   | AltConf | Trace |
|-----|-------|----------|-------|------|-----|-----|---|---------|-------|
|     |       |          | Total | C    | N   | O   | S |         |       |
| 5   | E     | 209      | 1720  | 1089 | 300 | 323 | 8 | 0       | 0     |

- Molecule 6 is a protein called DNA-directed RNA polymerases I, II, and III subunit RPABC2.

| Mol | Chain | Residues | Atoms |     |     |     |   | AltConf | Trace |
|-----|-------|----------|-------|-----|-----|-----|---|---------|-------|
|     |       |          | Total | C   | N   | O   | S |         |       |
| 6   | F     | 82       | 657   | 418 | 113 | 121 | 5 | 0       | 0     |

- Molecule 7 is a protein called DNA-directed RNA polymerase subunit.

| Mol | Chain | Residues | Atoms |     |     |     |   | AltConf | Trace |
|-----|-------|----------|-------|-----|-----|-----|---|---------|-------|
|     |       |          | Total | C   | N   | O   | S |         |       |
| 7   | G     | 171      | 1351  | 875 | 219 | 249 | 8 | 0       | 0     |

- Molecule 8 is a protein called DNA-directed RNA polymerases I, II, and III subunit RPABC3.

| Mol | Chain | Residues | Atoms |     |     |     |   | AltConf | Trace |
|-----|-------|----------|-------|-----|-----|-----|---|---------|-------|
|     |       |          | Total | C   | N   | O   | S |         |       |
| 8   | H     | 148      | 1186  | 750 | 194 | 237 | 5 | 0       | 0     |

- Molecule 9 is a protein called DNA-directed RNA polymerase II subunit RPB9.

| Mol | Chain | Residues | Atoms |     |     |     |    | AltConf | Trace |
|-----|-------|----------|-------|-----|-----|-----|----|---------|-------|
|     |       |          | Total | C   | N   | O   | S  |         |       |
| 9   | I     | 117      | 949   | 587 | 169 | 182 | 11 | 0       | 0     |

- Molecule 10 is a protein called DNA-directed RNA polymerases I, II, and III subunit RPABC5.

| Mol | Chain | Residues | Atoms |     |    |    |   | AltConf | Trace |
|-----|-------|----------|-------|-----|----|----|---|---------|-------|
|     |       |          | Total | C   | N  | O  | S |         |       |
| 10  | J     | 67       | 533   | 345 | 90 | 92 | 6 | 0       | 0     |

- Molecule 11 is a protein called DNA-directed RNA polymerase II subunit RPB11-a.

| Mol | Chain | Residues | Atoms |     |     |     |   | AltConf | Trace |
|-----|-------|----------|-------|-----|-----|-----|---|---------|-------|
|     |       |          | Total | C   | N   | O   | S |         |       |
| 11  | K     | 115      | 920   | 593 | 152 | 173 | 2 | 0       | 0     |

- Molecule 12 is a protein called RNA polymerase II, I and III subunit K.

| Mol | Chain | Residues | Atoms |     |    |    |   | AltConf | Trace |
|-----|-------|----------|-------|-----|----|----|---|---------|-------|
|     |       |          | Total | C   | N  | O  | S |         |       |
| 12  | L     | 46       | 388   | 241 | 75 | 66 | 6 | 0       | 0     |

- Molecule 13 is a protein called Transcription elongation factor 1 homolog.

| Mol | Chain | Residues | Atoms |     |    |     |   | AltConf | Trace |
|-----|-------|----------|-------|-----|----|-----|---|---------|-------|
|     |       |          | Total | C   | N  | O   | S |         |       |
| 13  | f     | 64       | 505   | 312 | 81 | 105 | 7 | 0       | 0     |

There are 2 discrepancies between the modelled and reference sequences:

| Chain | Residue | Modelled | Actual | Comment        | Reference  |
|-------|---------|----------|--------|----------------|------------|
| f     | -1      | GLY      | -      | expression tag | UNP P60002 |
| f     | 0       | ALA      | -      | expression tag | UNP P60002 |

- Molecule 14 is a DNA chain called Non-template DNA.

| Mol | Chain | Residues | Atoms |     |     |     |    | AltConf | Trace |
|-----|-------|----------|-------|-----|-----|-----|----|---------|-------|
|     |       |          | Total | C   | N   | O   | P  |         |       |
| 14  | N     | 40       | 831   | 393 | 162 | 236 | 40 | 0       | 0     |

- Molecule 15 is a RNA chain called RNA.

| Mol | Chain | Residues | Atoms |    |    |    |    | AltConf | Trace |
|-----|-------|----------|-------|----|----|----|----|---------|-------|
|     |       |          | Total | C  | N  | O  | P  |         |       |
| 15  | M     | 10       | 220   | 98 | 45 | 67 | 10 | 0       | 0     |

- Molecule 16 is a DNA chain called Template DNA.

| Mol | Chain | Residues | Atoms |     |     |     |    | AltConf | Trace |
|-----|-------|----------|-------|-----|-----|-----|----|---------|-------|
|     |       |          | Total | C   | N   | O   | P  |         |       |
| 16  | T     | 54       | 1091  | 521 | 187 | 329 | 54 | 0       | 0     |

- Molecule 17 is a protein called DNA excision repair protein ERCC-8.

| Mol | Chain | Residues | Atoms |      |     |     |    | AltConf | Trace |
|-----|-------|----------|-------|------|-----|-----|----|---------|-------|
|     |       |          | Total | C    | N   | O   | S  |         |       |
| 17  | a     | 377      | 2951  | 1842 | 520 | 570 | 19 | 0       | 0     |

There are 12 discrepancies between the modelled and reference sequences:

| Chain | Residue | Modelled | Actual | Comment        | Reference  |
|-------|---------|----------|--------|----------------|------------|
| a     | 397     | GLY      | -      | expression tag | UNP Q13216 |
| a     | 398     | THR      | -      | expression tag | UNP Q13216 |
| a     | 399     | SER      | -      | expression tag | UNP Q13216 |
| a     | 400     | ALA      | -      | expression tag | UNP Q13216 |
| a     | 401     | TRP      | -      | expression tag | UNP Q13216 |
| a     | 402     | SER      | -      | expression tag | UNP Q13216 |
| a     | 403     | HIS      | -      | expression tag | UNP Q13216 |
| a     | 404     | PRO      | -      | expression tag | UNP Q13216 |
| a     | 405     | GLN      | -      | expression tag | UNP Q13216 |
| a     | 406     | PHE      | -      | expression tag | UNP Q13216 |
| a     | 407     | GLU      | -      | expression tag | UNP Q13216 |
| a     | 408     | LYS      | -      | expression tag | UNP Q13216 |

- Molecule 18 is a protein called DNA damage-binding protein 1.

| Mol | Chain | Residues | Atoms |      |      |      |    | AltConf | Trace |
|-----|-------|----------|-------|------|------|------|----|---------|-------|
|     |       |          | Total | C    | N    | O    | S  |         |       |
| 18  | b     | 814      | 6405  | 4059 | 1079 | 1231 | 36 | 0       | 0     |

There are 20 discrepancies between the modelled and reference sequences:

| Chain | Residue | Modelled | Actual | Comment               | Reference  |
|-------|---------|----------|--------|-----------------------|------------|
| b     | -19     | MET      | -      | initiating methionine | UNP Q16531 |
| b     | -18     | ALA      | -      | expression tag        | UNP Q16531 |
| b     | -17     | HIS      | -      | expression tag        | UNP Q16531 |
| b     | -16     | HIS      | -      | expression tag        | UNP Q16531 |
| b     | -15     | HIS      | -      | expression tag        | UNP Q16531 |
| b     | -14     | HIS      | -      | expression tag        | UNP Q16531 |
| b     | -13     | HIS      | -      | expression tag        | UNP Q16531 |
| b     | -12     | HIS      | -      | expression tag        | UNP Q16531 |
| b     | -11     | SER      | -      | expression tag        | UNP Q16531 |
| b     | -10     | ALA      | -      | expression tag        | UNP Q16531 |
| b     | -9      | ALA      | -      | expression tag        | UNP Q16531 |
| b     | -8      | LEU      | -      | expression tag        | UNP Q16531 |
| b     | -7      | GLU      | -      | expression tag        | UNP Q16531 |
| b     | -6      | VAL      | -      | expression tag        | UNP Q16531 |
| b     | -5      | LEU      | -      | expression tag        | UNP Q16531 |
| b     | -4      | PHE      | -      | expression tag        | UNP Q16531 |
| b     | -3      | GLN      | -      | expression tag        | UNP Q16531 |
| b     | -2      | GLY      | -      | expression tag        | UNP Q16531 |
| b     | -1      | PRO      | -      | expression tag        | UNP Q16531 |
| b     | 0       | GLY      | -      | expression tag        | UNP Q16531 |

- Molecule 19 is a protein called DET1- and DDB1-associated protein 1.

| Mol | Chain | Residues | Atoms |     |    |    | AltConf | Trace |
|-----|-------|----------|-------|-----|----|----|---------|-------|
|     |       |          | Total | C   | N  | O  |         |       |
| 19  | c     | 36       | 302   | 199 | 49 | 54 | 0       | 0     |

There are 50 discrepancies between the modelled and reference sequences:

| Chain | Residue | Modelled | Actual | Comment        | Reference  |
|-------|---------|----------|--------|----------------|------------|
| c     | 103     | ASP      | -      | expression tag | UNP Q9BW61 |
| c     | 104     | VAL      | -      | expression tag | UNP Q9BW61 |
| c     | 105     | LEU      | -      | expression tag | UNP Q9BW61 |
| c     | 106     | PHE      | -      | expression tag | UNP Q9BW61 |
| c     | 107     | GLN      | -      | expression tag | UNP Q9BW61 |

*Continued on next page...*

*Continued from previous page...*

| Chain | Residue | Modelled | Actual | Comment        | Reference  |
|-------|---------|----------|--------|----------------|------------|
| c     | 108     | GLY      | -      | expression tag | UNP Q9BW61 |
| c     | 109     | PRO      | -      | expression tag | UNP Q9BW61 |
| c     | 110     | GLY      | -      | expression tag | UNP Q9BW61 |
| c     | 111     | ALA      | -      | expression tag | UNP Q9BW61 |
| c     | 112     | TRP      | -      | expression tag | UNP Q9BW61 |
| c     | 113     | SER      | -      | expression tag | UNP Q9BW61 |
| c     | 114     | HIS      | -      | expression tag | UNP Q9BW61 |
| c     | 115     | PRO      | -      | expression tag | UNP Q9BW61 |
| c     | 116     | GLN      | -      | expression tag | UNP Q9BW61 |
| c     | 117     | PHE      | -      | expression tag | UNP Q9BW61 |
| c     | 118     | GLU      | -      | expression tag | UNP Q9BW61 |
| c     | 119     | LYS      | -      | expression tag | UNP Q9BW61 |
| c     | 120     | GLY      | -      | expression tag | UNP Q9BW61 |
| c     | 121     | GLY      | -      | expression tag | UNP Q9BW61 |
| c     | 122     | GLY      | -      | expression tag | UNP Q9BW61 |
| c     | 123     | SER      | -      | expression tag | UNP Q9BW61 |
| c     | 124     | GLY      | -      | expression tag | UNP Q9BW61 |
| c     | 125     | GLY      | -      | expression tag | UNP Q9BW61 |
| c     | 126     | GLY      | -      | expression tag | UNP Q9BW61 |
| c     | 127     | SER      | -      | expression tag | UNP Q9BW61 |
| c     | 128     | GLY      | -      | expression tag | UNP Q9BW61 |
| c     | 129     | GLY      | -      | expression tag | UNP Q9BW61 |
| c     | 130     | GLY      | -      | expression tag | UNP Q9BW61 |
| c     | 131     | SER      | -      | expression tag | UNP Q9BW61 |
| c     | 132     | TRP      | -      | expression tag | UNP Q9BW61 |
| c     | 133     | SER      | -      | expression tag | UNP Q9BW61 |
| c     | 134     | HIS      | -      | expression tag | UNP Q9BW61 |
| c     | 135     | PRO      | -      | expression tag | UNP Q9BW61 |
| c     | 136     | GLN      | -      | expression tag | UNP Q9BW61 |
| c     | 137     | PHE      | -      | expression tag | UNP Q9BW61 |
| c     | 138     | GLU      | -      | expression tag | UNP Q9BW61 |
| c     | 139     | LYS      | -      | expression tag | UNP Q9BW61 |
| c     | 140     | GLY      | -      | expression tag | UNP Q9BW61 |
| c     | 141     | ALA      | -      | expression tag | UNP Q9BW61 |
| c     | 142     | SER      | -      | expression tag | UNP Q9BW61 |
| c     | 143     | GLY      | -      | expression tag | UNP Q9BW61 |
| c     | 144     | GLU      | -      | expression tag | UNP Q9BW61 |
| c     | 145     | ASP      | -      | expression tag | UNP Q9BW61 |
| c     | 146     | TYR      | -      | expression tag | UNP Q9BW61 |
| c     | 147     | LYS      | -      | expression tag | UNP Q9BW61 |
| c     | 148     | ASP      | -      | expression tag | UNP Q9BW61 |
| c     | 149     | ASP      | -      | expression tag | UNP Q9BW61 |

*Continued on next page...*



*Continued from previous page...*

| Chain | Residue | Modelled | Actual | Comment        | Reference  |
|-------|---------|----------|--------|----------------|------------|
| c     | 150     | ASP      | -      | expression tag | UNP Q9BW61 |
| c     | 151     | ASP      | -      | expression tag | UNP Q9BW61 |
| c     | 152     | LYS      | -      | expression tag | UNP Q9BW61 |

- Molecule 20 is a protein called Inactive serine/threonine-protein kinase 19.

| Mol | Chain | Residues | Atoms |      |     |     |   | AltConf | Trace |
|-----|-------|----------|-------|------|-----|-----|---|---------|-------|
|     |       |          | Total | C    | N   | O   | S |         |       |
| 20  | g     | 220      | 1721  | 1098 | 308 | 309 | 6 | 0       | 0     |

There are 3 discrepancies between the modelled and reference sequences:

| Chain | Residue | Modelled | Actual | Comment        | Reference  |
|-------|---------|----------|--------|----------------|------------|
| g     | -2      | GLY      | -      | expression tag | UNP P49842 |
| g     | -1      | PRO      | -      | expression tag | UNP P49842 |
| g     | 0       | GLY      | -      | expression tag | UNP P49842 |

- Molecule 21 is a protein called DNA excision repair protein ERCC-6.

| Mol | Chain | Residues | Atoms |      |     |     |    | AltConf | Trace |
|-----|-------|----------|-------|------|-----|-----|----|---------|-------|
|     |       |          | Total | C    | N   | O   | S  |         |       |
| 21  | e     | 590      | 4820  | 3091 | 847 | 859 | 23 | 0       | 0     |

- Molecule 22 is a protein called UV-stimulated scaffold protein A.

| Mol | Chain | Residues | Atoms |      |     |     |   | AltConf | Trace |
|-----|-------|----------|-------|------|-----|-----|---|---------|-------|
|     |       |          | Total | C    | N   | O   | S |         |       |
| 22  | d     | 249      | 2040  | 1274 | 397 | 361 | 8 | 0       | 0     |

There are 20 discrepancies between the modelled and reference sequences:

| Chain | Residue | Modelled | Actual | Comment               | Reference  |
|-------|---------|----------|--------|-----------------------|------------|
| d     | -19     | MET      | -      | initiating methionine | UNP Q2YD98 |
| d     | -18     | ALA      | -      | expression tag        | UNP Q2YD98 |
| d     | -17     | HIS      | -      | expression tag        | UNP Q2YD98 |
| d     | -16     | HIS      | -      | expression tag        | UNP Q2YD98 |
| d     | -15     | HIS      | -      | expression tag        | UNP Q2YD98 |
| d     | -14     | HIS      | -      | expression tag        | UNP Q2YD98 |
| d     | -13     | HIS      | -      | expression tag        | UNP Q2YD98 |
| d     | -12     | HIS      | -      | expression tag        | UNP Q2YD98 |
| d     | -11     | SER      | -      | expression tag        | UNP Q2YD98 |

*Continued on next page...*

*Continued from previous page...*

| Chain | Residue | Modelled | Actual | Comment        | Reference  |
|-------|---------|----------|--------|----------------|------------|
| d     | -10     | ALA      | -      | expression tag | UNP Q2YD98 |
| d     | -9      | ALA      | -      | expression tag | UNP Q2YD98 |
| d     | -8      | LEU      | -      | expression tag | UNP Q2YD98 |
| d     | -7      | GLU      | -      | expression tag | UNP Q2YD98 |
| d     | -6      | VAL      | -      | expression tag | UNP Q2YD98 |
| d     | -5      | LEU      | -      | expression tag | UNP Q2YD98 |
| d     | -4      | PHE      | -      | expression tag | UNP Q2YD98 |
| d     | -3      | GLN      | -      | expression tag | UNP Q2YD98 |
| d     | -2      | GLY      | -      | expression tag | UNP Q2YD98 |
| d     | -1      | PRO      | -      | expression tag | UNP Q2YD98 |
| d     | 0       | GLY      | -      | expression tag | UNP Q2YD98 |

- Molecule 23 is ZINC ION (three-letter code: ZN) (formula: Zn) (labeled as "Ligand of Interest" by depositor).

| Mol | Chain | Residues | Atoms           | AltConf |
|-----|-------|----------|-----------------|---------|
| 23  | A     | 2        | Total Zn<br>2 2 | 0       |
| 23  | B     | 1        | Total Zn<br>1 1 | 0       |
| 23  | C     | 1        | Total Zn<br>1 1 | 0       |
| 23  | I     | 2        | Total Zn<br>2 2 | 0       |
| 23  | J     | 1        | Total Zn<br>1 1 | 0       |
| 23  | L     | 1        | Total Zn<br>1 1 | 0       |
| 23  | f     | 1        | Total Zn<br>1 1 | 0       |
| 23  | d     | 1        | Total Zn<br>1 1 | 0       |

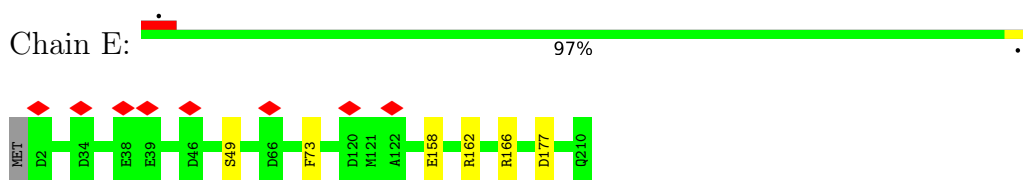
- Molecule 24 is MAGNESIUM ION (three-letter code: MG) (formula: Mg) (labeled as "Ligand of Interest" by depositor).

| Mol | Chain | Residues | Atoms           | AltConf |
|-----|-------|----------|-----------------|---------|
| 24  | A     | 1        | Total Mg<br>1 1 | 0       |

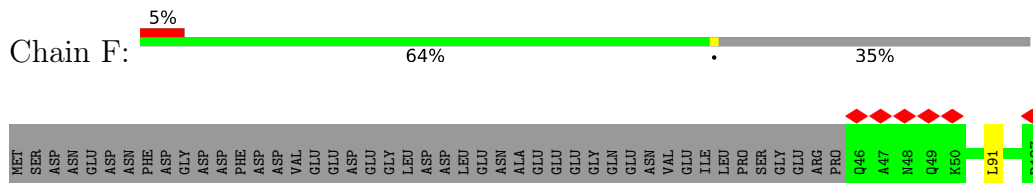




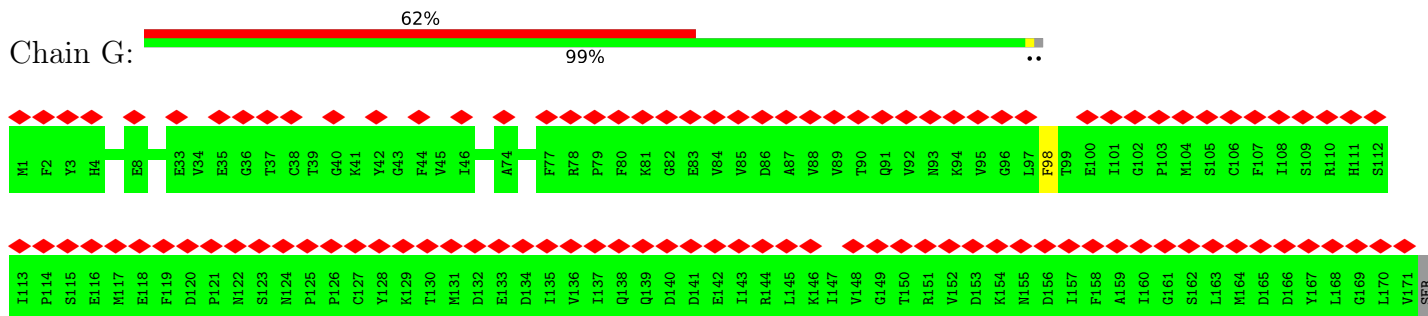
- Molecule 5: DNA-directed RNA polymerase II subunit E



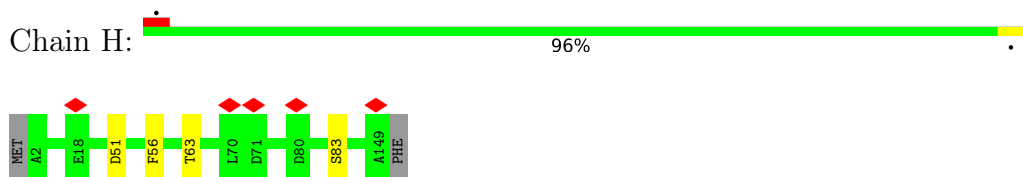
- Molecule 6: DNA-directed RNA polymerases I, II, and III subunit RPABC2



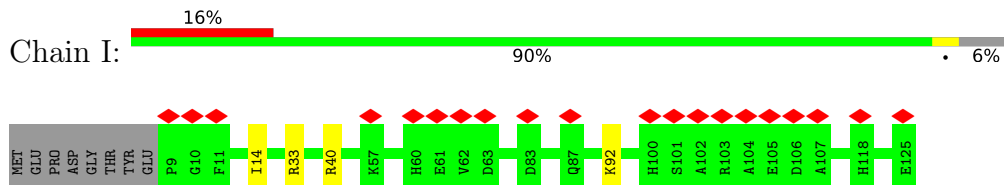
- Molecule 7: DNA-directed RNA polymerase subunit



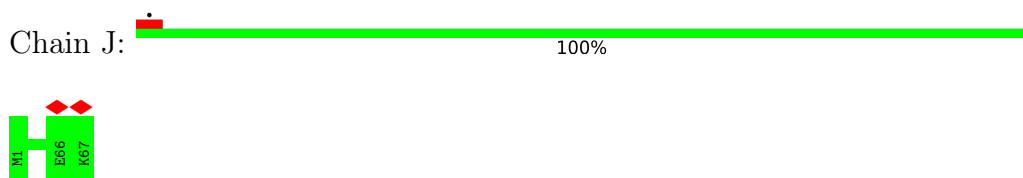
- Molecule 8: DNA-directed RNA polymerases I, II, and III subunit RPABC3



- Molecule 9: DNA-directed RNA polymerase II subunit RPB9



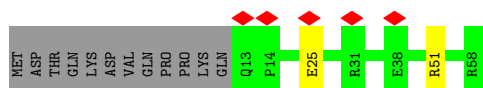
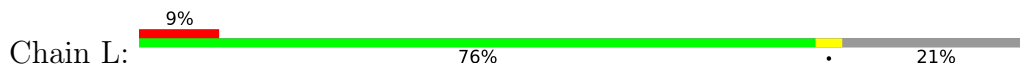
- Molecule 10: DNA-directed RNA polymerases I, II, and III subunit RPABC5



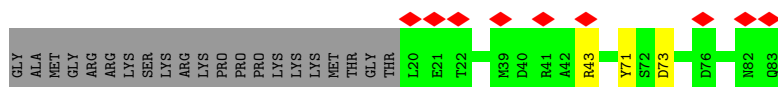
- Molecule 11: DNA-directed RNA polymerase II subunit RPB11-a



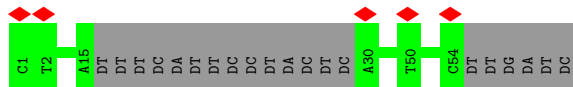
- Molecule 12: RNA polymerase II, I and III subunit K



- Molecule 13: Transcription elongation factor 1 homolog



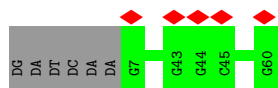
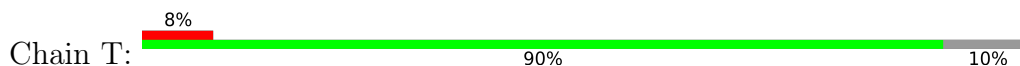
- Molecule 14: Non-template DNA



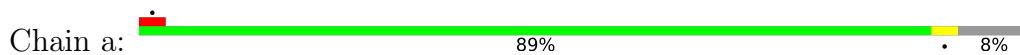
- Molecule 15: RNA



- Molecule 16: Template DNA



- Molecule 17: DNA excision repair protein ERCC-8











## 4 Experimental information

| Property                             | Value                                   | Source    |
|--------------------------------------|---|-----------|
| EM reconstruction method             | SINGLE PARTICLE                         | Depositor |
| Imposed symmetry                     | POINT, Not provided                     |           |
| Number of particles used             | 257539                                  | Depositor |
| Resolution determination method      | OTHER                                   | Depositor |
| CTF correction method                | PHASE FLIPPING AND AMPLITUDE CORRECTION | Depositor |
| Microscope                           | FEI TITAN KRIOS                         | Depositor |
| Voltage (kV)                         | 300                                     | Depositor |
| Electron dose ( $e^-/\text{\AA}^2$ ) | 50                                      | Depositor |
| Minimum defocus (nm)                 | 800                                     | Depositor |
| Maximum defocus (nm)                 | 2200                                    | Depositor |
| Magnification                        | 81000                                   | Depositor |
| Image detector                       | GATAN K3 BIOQUANTUM (6k x 4k)           | Depositor |
| Maximum map value                    | 114.502                                 | Depositor |
| Minimum map value                    | -1.609                                  | Depositor |
| Average map value                    | 0.029                                   | Depositor |
| Map value standard deviation         | 1.373                                   | Depositor |
| Recommended contour level            | 4.4                                     | Depositor |
| Map size (Å)                         | 423.99997, 423.99997, 423.99997         | wwPDB     |
| Map dimensions                       | 400, 400, 400                           | wwPDB     |
| Map angles (°)                       | 90.0, 90.0, 90.0                        | wwPDB     |
| Pixel spacing (Å)                    | 1.06, 1.06, 1.06                        | Depositor |

## 5 Model quality i

### 5.1 Standard geometry i

Bond lengths and bond angles in the following residue types are not validated in this section: MG, ZN

The Z score for a bond length (or angle) is the number of standard deviations the observed value is removed from the expected value. A bond length (or angle) with  $|Z| > 5$  is considered an outlier worth inspection. RMSZ is the root-mean-square of all Z scores of the bond lengths (or angles).

| Mol | Chain | Bond lengths |         | Bond angles |         |
|-----|-------|--------------|---------|-------------|---------|
|     |       | RMSZ         | # Z  >5 | RMSZ        | # Z  >5 |
| 1   | A     | 0.25         | 0/11364 | 0.50        | 0/15342 |
| 2   | B     | 0.26         | 0/9229  | 0.50        | 0/12458 |
| 3   | C     | 0.26         | 0/2132  | 0.48        | 0/2896  |
| 4   | D     | 0.24         | 0/1064  | 0.44        | 0/1428  |
| 5   | E     | 0.26         | 0/1751  | 0.52        | 0/2366  |
| 6   | F     | 0.26         | 0/667   | 0.50        | 0/901   |
| 7   | G     | 0.25         | 0/1382  | 0.48        | 0/1874  |
| 8   | H     | 0.26         | 0/1207  | 0.51        | 0/1628  |
| 9   | I     | 0.24         | 0/972   | 0.48        | 0/1316  |
| 10  | J     | 0.27         | 0/542   | 0.48        | 0/730   |
| 11  | K     | 0.26         | 0/939   | 0.43        | 0/1271  |
| 12  | L     | 0.26         | 0/394   | 0.58        | 0/524   |
| 13  | f     | 0.24         | 0/515   | 0.46        | 0/700   |
| 14  | N     | 0.54         | 0/934   | 0.89        | 0/1439  |
| 15  | M     | 0.29         | 0/247   | 0.77        | 0/384   |
| 16  | T     | 0.53         | 0/1218  | 0.96        | 0/1874  |
| 17  | a     | 0.28         | 0/3015  | 0.53        | 0/4086  |
| 18  | b     | 0.28         | 0/6518  | 0.51        | 0/8810  |
| 19  | c     | 0.25         | 0/311   | 0.45        | 0/420   |
| 20  | g     | 0.24         | 0/1753  | 0.55        | 0/2374  |
| 21  | e     | 0.25         | 0/4929  | 0.50        | 0/6642  |
| 22  | d     | 0.24         | 0/2077  | 0.51        | 0/2783  |
| All | All   | 0.28         | 0/53160 | 0.53        | 0/72246 |

Chiral center outliers are detected by calculating the chiral volume of a chiral center and verifying if the center is modelled as a planar moiety or with the opposite hand. A planarity outlier is detected by checking planarity of atoms in a peptide group, atoms in a mainchain group or atoms of a sidechain that are expected to be planar.

| Mol | Chain | #Chirality outliers | #Planarity outliers |
|-----|-------|---------------------|---------------------|
| 1   | A     | 0                   | 3                   |

*Continued on next page...*

*Continued from previous page...*

| Mol | Chain | #Chirality outliers | #Planarity outliers |
|-----|-------|---------------------|---------------------|
| 2   | B     | 0                   | 1                   |
| 5   | E     | 0                   | 2                   |
| 9   | I     | 0                   | 1                   |
| 12  | L     | 0                   | 1                   |
| 13  | f     | 0                   | 1                   |
| 17  | a     | 0                   | 1                   |
| 18  | b     | 0                   | 3                   |
| 20  | g     | 0                   | 3                   |
| 21  | e     | 0                   | 4                   |
| 22  | d     | 0                   | 1                   |
| All | All   | 0                   | 21                  |

There are no bond length outliers.

There are no bond angle outliers.

There are no chirality outliers.

5 of 21 planarity outliers are listed below:

| Mol | Chain | Res  | Type | Group     |
|-----|-------|------|------|-----------|
| 1   | A     | 1160 | ARG  | Sidechain |
| 1   | A     | 20   | ARG  | Sidechain |
| 1   | A     | 532  | ARG  | Sidechain |
| 2   | B     | 975  | ARG  | Sidechain |
| 5   | E     | 162  | ARG  | Sidechain |

## 5.2 Too-close contacts [i](#)

Due to software issues we are unable to calculate clashes - this section is therefore empty.

## 5.3 Torsion angles [i](#)

### 5.3.1 Protein backbone [i](#)

In the following table, the Percentiles column shows the percent Ramachandran outliers of the chain as a percentile score with respect to all PDB entries followed by that with respect to all EM entries.

The Analysed column shows the number of residues for which the backbone conformation was analysed, and the total number of residues.

| Mol | Chain | Analysed        | Favoured   | Allowed  | Outliers | Percentiles |     |
|-----|-------|-----------------|------------|----------|----------|-------------|-----|
| 1   | A     | 1399/1970 (71%) | 1349 (96%) | 50 (4%)  | 0        | 100         | 100 |
| 2   | B     | 1122/1300 (86%) | 1078 (96%) | 44 (4%)  | 0        | 100         | 100 |
| 3   | C     | 256/275 (93%)   | 250 (98%)  | 6 (2%)   | 0        | 100         | 100 |
| 4   | D     | 126/142 (89%)   | 123 (98%)  | 3 (2%)   | 0        | 100         | 100 |
| 5   | E     | 207/210 (99%)   | 203 (98%)  | 4 (2%)   | 0        | 100         | 100 |
| 6   | F     | 80/127 (63%)    | 77 (96%)   | 3 (4%)   | 0        | 100         | 100 |
| 7   | G     | 169/172 (98%)   | 161 (95%)  | 8 (5%)   | 0        | 100         | 100 |
| 8   | H     | 146/150 (97%)   | 144 (99%)  | 2 (1%)   | 0        | 100         | 100 |
| 9   | I     | 115/125 (92%)   | 104 (90%)  | 11 (10%) | 0        | 100         | 100 |
| 10  | J     | 65/67 (97%)     | 64 (98%)   | 1 (2%)   | 0        | 100         | 100 |
| 11  | K     | 113/117 (97%)   | 112 (99%)  | 1 (1%)   | 0        | 100         | 100 |
| 12  | L     | 44/58 (76%)     | 42 (96%)   | 2 (4%)   | 0        | 100         | 100 |
| 13  | f     | 62/85 (73%)     | 60 (97%)   | 2 (3%)   | 0        | 100         | 100 |
| 17  | a     | 371/408 (91%)   | 345 (93%)  | 26 (7%)  | 0        | 100         | 100 |
| 18  | b     | 806/1160 (70%)  | 766 (95%)  | 40 (5%)  | 0        | 100         | 100 |
| 19  | c     | 32/152 (21%)    | 32 (100%)  | 0        | 0        | 100         | 100 |
| 20  | g     | 218/257 (85%)   | 210 (96%)  | 8 (4%)   | 0        | 100         | 100 |
| 21  | e     | 574/1493 (38%)  | 546 (95%)  | 28 (5%)  | 0        | 100         | 100 |
| 22  | d     | 243/729 (33%)   | 234 (96%)  | 9 (4%)   | 0        | 100         | 100 |
| All | All   | 6148/8997 (68%) | 5900 (96%) | 248 (4%) | 0        | 100         | 100 |

There are no Ramachandran outliers to report.

### 5.3.2 Protein sidechains [i](#)

In the following table, the Percentiles column shows the percent sidechain outliers of the chain as a percentile score with respect to all PDB entries followed by that with respect to all EM entries.

The Analysed column shows the number of residues for which the sidechain conformation was analysed, and the total number of residues.

| Mol | Chain | Analysed        | Rotameric  | Outliers | Percentiles |    |
|-----|-------|-----------------|------------|----------|-------------|----|
| 1   | A     | 1241/1749 (71%) | 1211 (98%) | 30 (2%)  | 44          | 66 |
| 2   | B     | 992/1127 (88%)  | 974 (98%)  | 18 (2%)  | 54          | 73 |

*Continued on next page...*

*Continued from previous page...*

| Mol | Chain | Analysed        | Rotameric  | Outliers | Percentiles |     |
|-----|-------|-----------------|------------|----------|-------------|-----|
| 3   | C     | 237/252 (94%)   | 232 (98%)  | 5 (2%)   | 48          | 69  |
| 4   | D     | 118/126 (94%)   | 116 (98%)  | 2 (2%)   | 56          | 74  |
| 5   | E     | 191/192 (100%)  | 187 (98%)  | 4 (2%)   | 48          | 69  |
| 6   | F     | 71/111 (64%)    | 70 (99%)   | 1 (1%)   | 62          | 77  |
| 7   | G     | 152/153 (99%)   | 151 (99%)  | 1 (1%)   | 81          | 88  |
| 8   | H     | 129/131 (98%)   | 125 (97%)  | 4 (3%)   | 35          | 60  |
| 9   | I     | 105/112 (94%)   | 102 (97%)  | 3 (3%)   | 37          | 61  |
| 10  | J     | 56/56 (100%)    | 56 (100%)  | 0        | 100         | 100 |
| 11  | K     | 104/106 (98%)   | 102 (98%)  | 2 (2%)   | 52          | 71  |
| 12  | L     | 43/55 (78%)     | 42 (98%)   | 1 (2%)   | 45          | 67  |
| 13  | f     | 59/76 (78%)     | 57 (97%)   | 2 (3%)   | 32          | 57  |
| 17  | a     | 331/358 (92%)   | 319 (96%)  | 12 (4%)  | 30          | 56  |
| 18  | b     | 712/1014 (70%)  | 700 (98%)  | 12 (2%)  | 56          | 74  |
| 19  | c     | 35/128 (27%)    | 35 (100%)  | 0        | 100         | 100 |
| 20  | g     | 183/215 (85%)   | 175 (96%)  | 8 (4%)   | 24          | 50  |
| 21  | e     | 527/1297 (41%)  | 509 (97%)  | 18 (3%)  | 32          | 57  |
| 22  | d     | 216/623 (35%)   | 213 (99%)  | 3 (1%)   | 62          | 77  |
| All | All   | 5502/7881 (70%) | 5376 (98%) | 126 (2%) | 46          | 67  |

5 of 126 residues with a non-rotameric sidechain are listed below:

| Mol | Chain | Res  | Type |
|-----|-------|------|------|
| 5   | E     | 158  | GLU  |
| 21  | e     | 689  | PHE  |
| 13  | f     | 71   | TYR  |
| 21  | e     | 642  | TYR  |
| 21  | e     | 1001 | LEU  |

Sometimes sidechains can be flipped to improve hydrogen bonding and reduce clashes. 5 of 24 such sidechains are listed below:

| Mol | Chain | Res | Type |
|-----|-------|-----|------|
| 17  | a     | 228 | GLN  |
| 21  | e     | 772 | GLN  |
| 21  | e     | 641 | HIS  |
| 21  | e     | 773 | HIS  |

*Continued on next page...*

*Continued from previous page...*

| Mol | Chain | Res | Type |
|-----|-------|-----|------|
| 2   | B     | 968 | ASN  |

### 5.3.3 RNA [i](#)

| Mol | Chain | Analysed   | Backbone Outliers | Pucker Outliers |
|-----|-------|------------|-------------------|-----------------|
| 15  | M     | 9/25 (36%) | 1 (11%)           | 0               |

All (1) RNA backbone outliers are listed below:

| Mol | Chain | Res | Type |
|-----|-------|-----|------|
| 15  | M     | 8   | G    |

There are no RNA pucker outliers to report.

## 5.4 Non-standard residues in protein, DNA, RNA chains [i](#)

There are no non-standard protein/DNA/RNA residues in this entry.

## 5.5 Carbohydrates [i](#)

There are no oligosaccharides in this entry.

## 5.6 Ligand geometry [i](#)

Of 11 ligands modelled in this entry, 11 are monoatomic - leaving 0 for Mogul analysis.

There are no bond length outliers.

There are no bond angle outliers.

There are no chirality outliers.

There are no torsion outliers.

There are no ring outliers.

No monomer is involved in short contacts.

## 5.7 Other polymers [i](#)

There are no such residues in this entry.

## 5.8 Polymer linkage issues

There are no chain breaks in this entry.



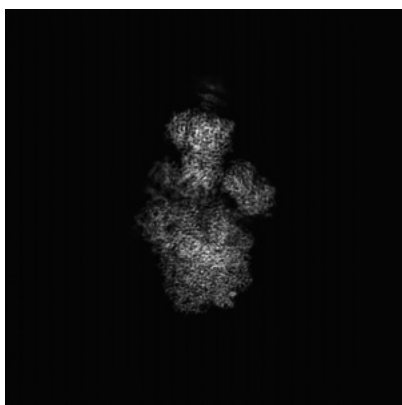
## 6 Map visualisation [i](#)

This section contains visualisations of the EMDB entry EMD-50325. These allow visual inspection of the internal detail of the map and identification of artifacts.

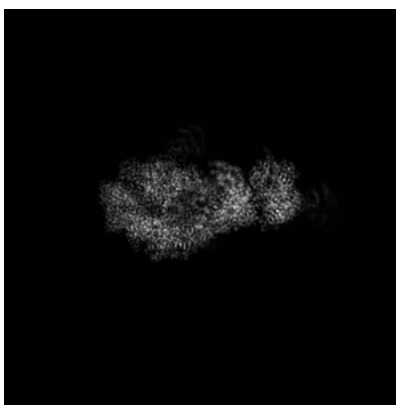
No raw map or half-maps were deposited for this entry and therefore no images, graphs, etc. pertaining to the raw map can be shown.

### 6.1 Orthogonal projections [i](#)

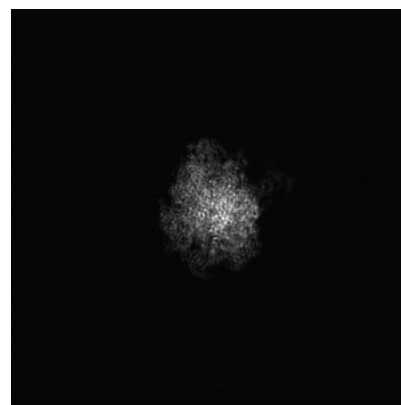
#### 6.1.1 Primary map



X



Y



Z

The images above show the map projected in three orthogonal directions.

### 6.2 Central slices [i](#)

#### 6.2.1 Primary map



X Index: 200



Y Index: 200



Z Index: 200

The images above show central slices of the map in three orthogonal directions.

## 6.3 Largest variance slices [i](#)

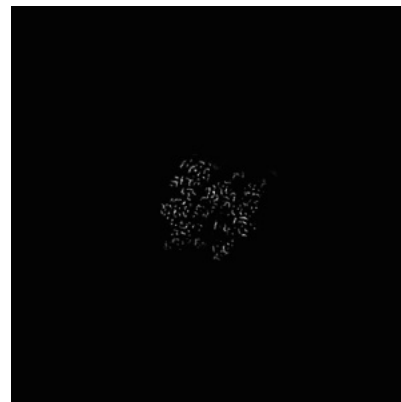
### 6.3.1 Primary map



X Index: 214



Y Index: 191

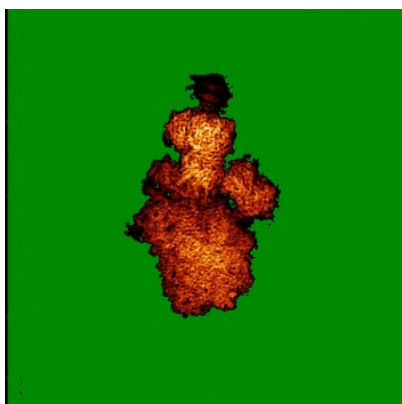


Z Index: 160

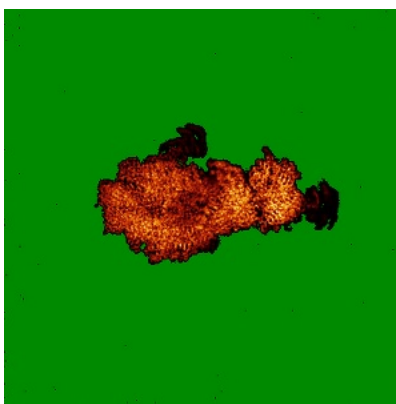
The images above show the largest variance slices of the map in three orthogonal directions.

## 6.4 Orthogonal standard-deviation projections (False-color) [i](#)

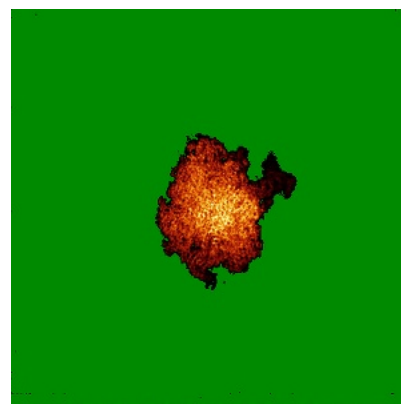
### 6.4.1 Primary map



X



Y

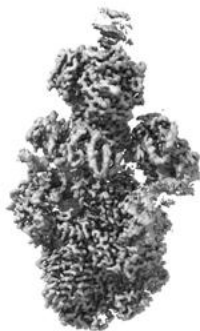


Z

The images above show the map standard deviation projections with false color in three orthogonal directions. Minimum values are shown in green, max in blue, and dark to light orange shades represent small to large values respectively.

## 6.5 Orthogonal surface views [i](#)

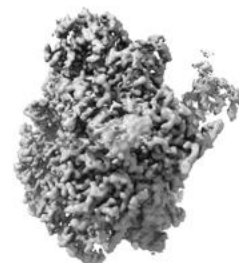
### 6.5.1 Primary map



X



Y



Z

The images above show the 3D surface view of the map at the recommended contour level 4.4. These images, in conjunction with the slice images, may facilitate assessment of whether an appropriate contour level has been provided.

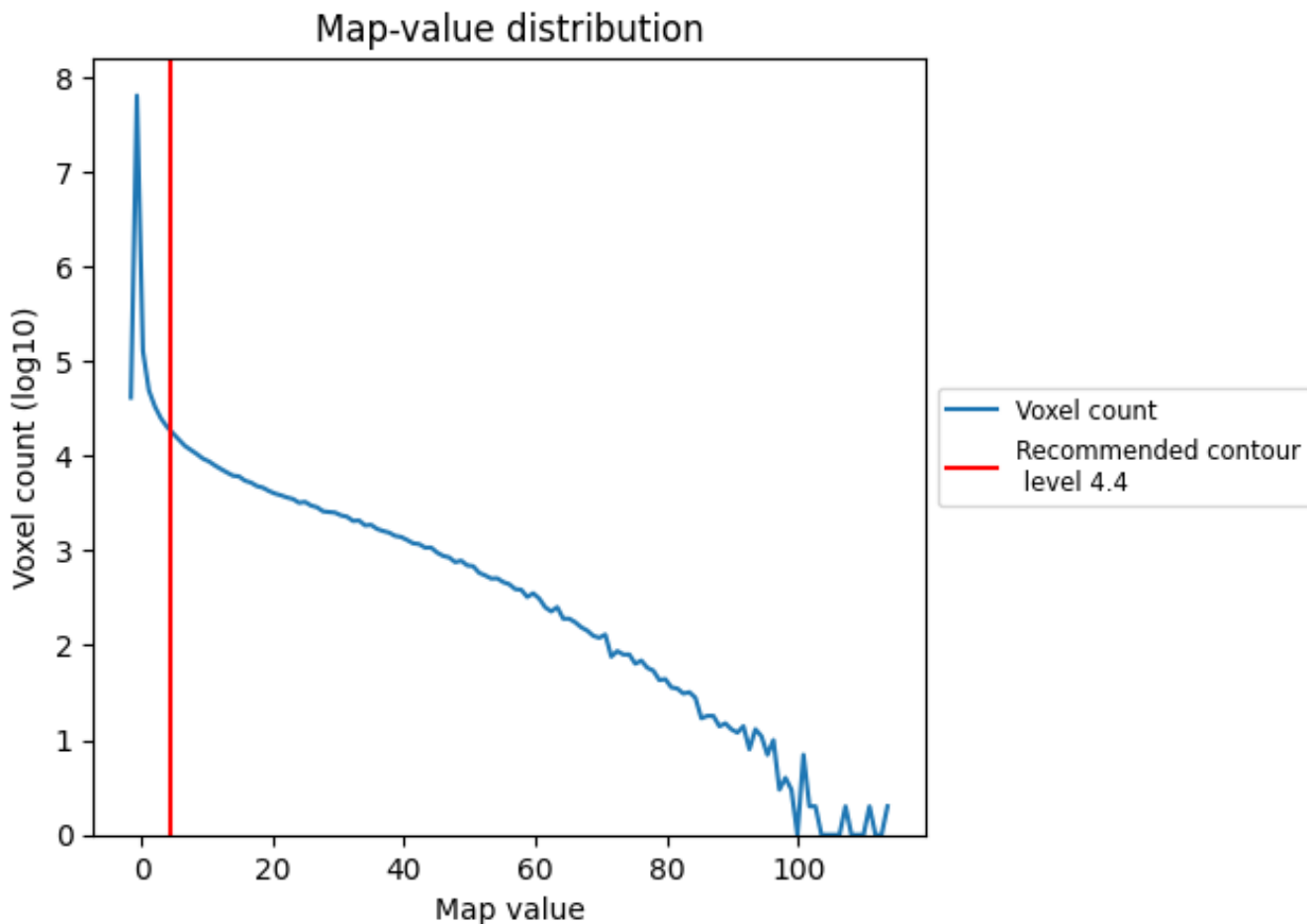
## 6.6 Mask visualisation [i](#)

This section was not generated. No masks/segmentation were deposited.

## 7 Map analysis [i](#)

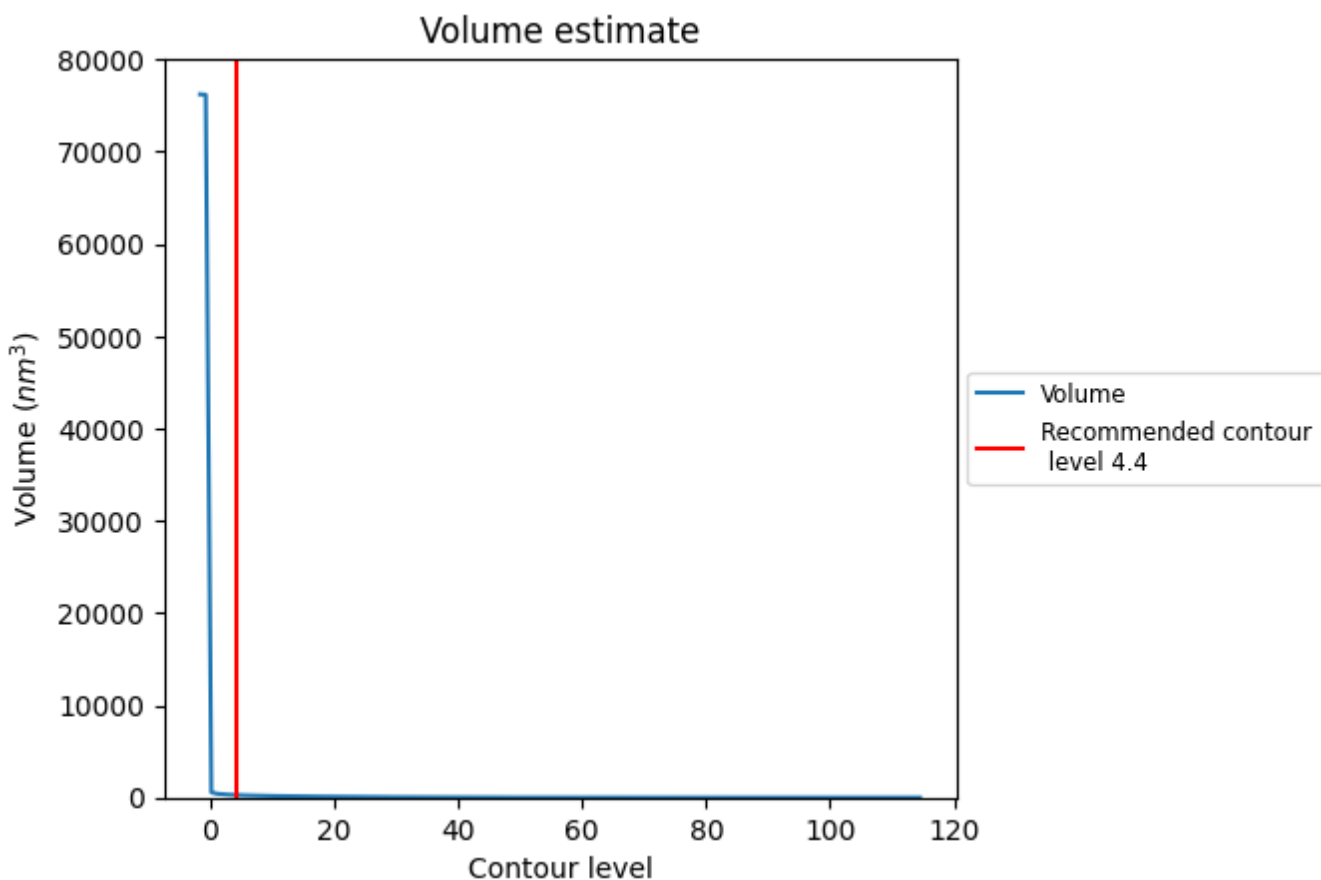
This section contains the results of statistical analysis of the map.

### 7.1 Map-value distribution [i](#)



The map-value distribution is plotted in 128 intervals along the x-axis. The y-axis is logarithmic. A spike in this graph at zero usually indicates that the volume has been masked.

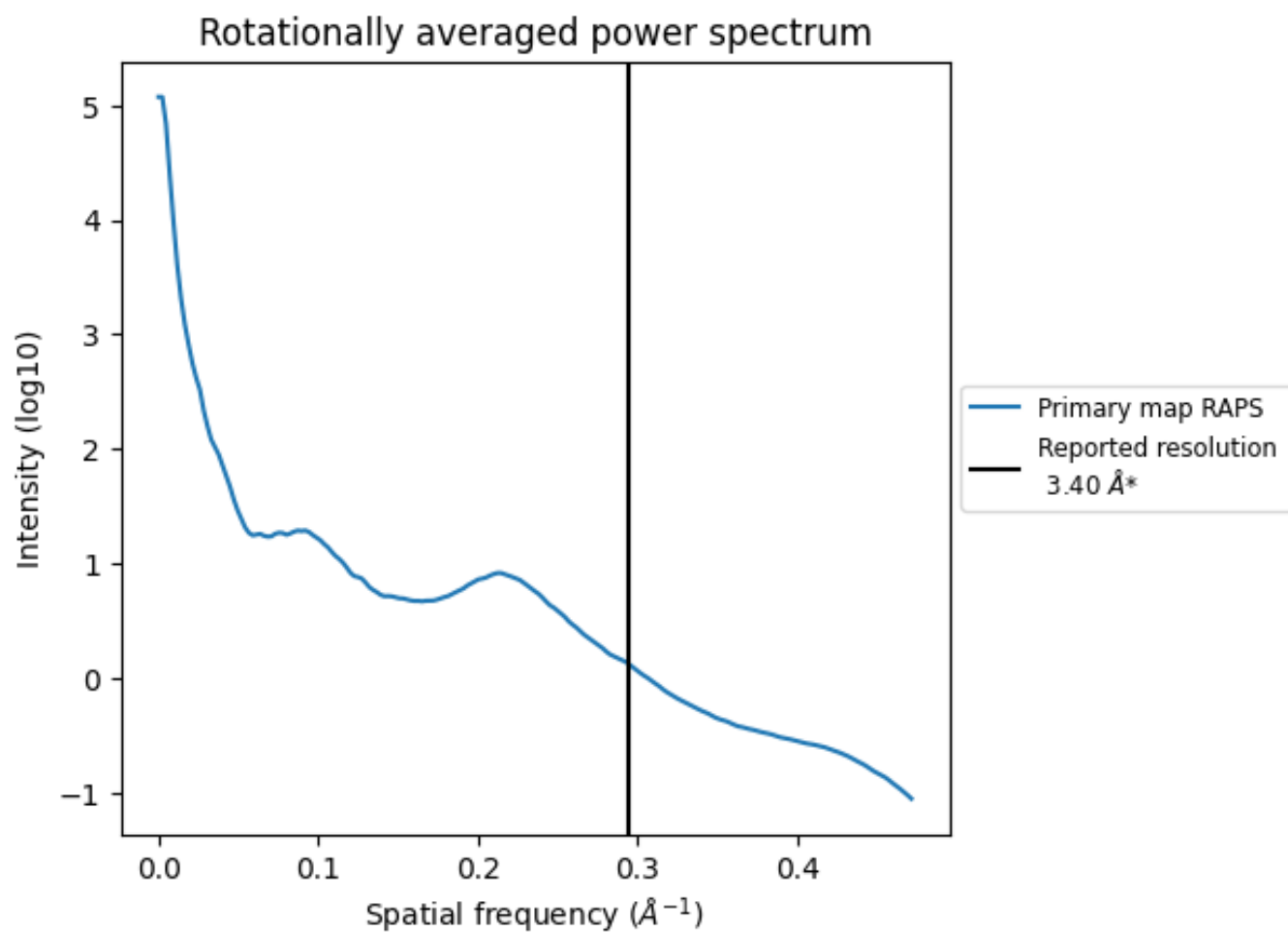
## 7.2 Volume estimate [i](#)



The volume at the recommended contour level is 269 nm<sup>3</sup>; this corresponds to an approximate mass of 243 kDa.

The volume estimate graph shows how the enclosed volume varies with the contour level. The recommended contour level is shown as a vertical line and the intersection between the line and the curve gives the volume of the enclosed surface at the given level.

### 7.3 Rotationally averaged power spectrum i



\*Reported resolution corresponds to spatial frequency of  $0.294 \text{ \AA}^{-1}$

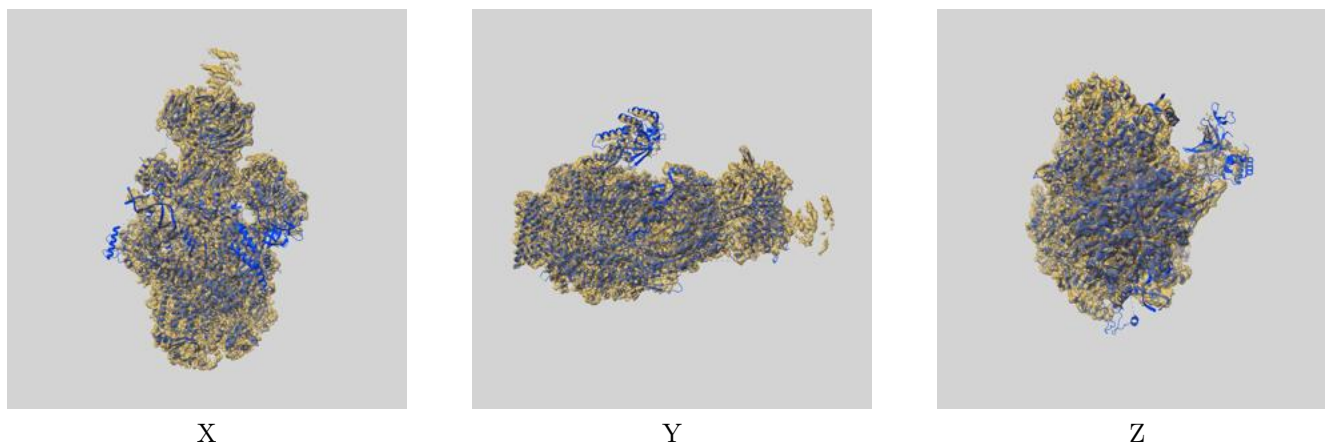
## 8 Fourier-Shell correlation

This section was not generated. No FSC curve or half-maps provided.

## 9 Map-model fit [i](#)

This section contains information regarding the fit between EMDB map EMD-50325 and PDB model 9FD2. Per-residue inclusion information can be found in section 3 on page 11.

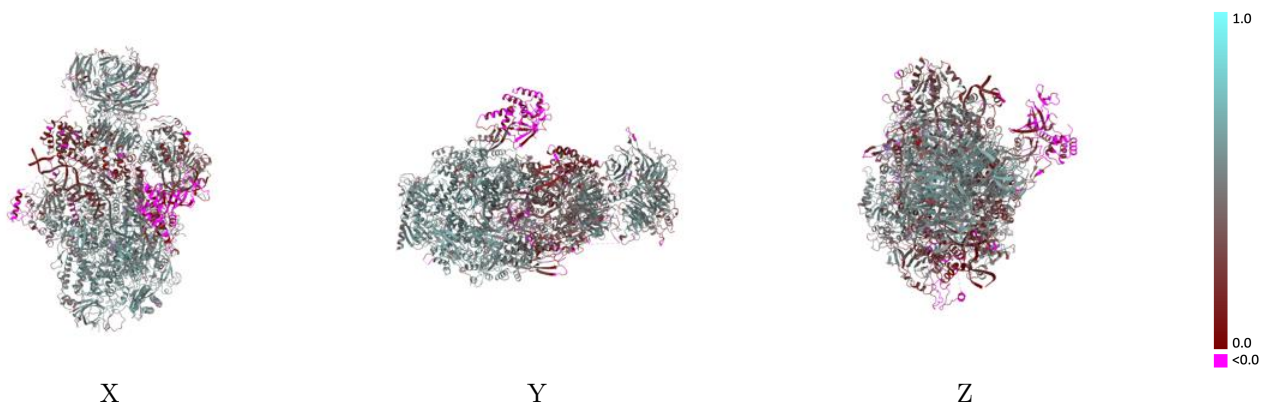
### 9.1 Map-model overlay [i](#)



The images above show the 3D surface view of the map at the recommended contour level 4.4 at 50% transparency in yellow overlaid with a ribbon representation of the model coloured in blue. These images allow for the visual assessment of the quality of fit between the atomic model and the map.

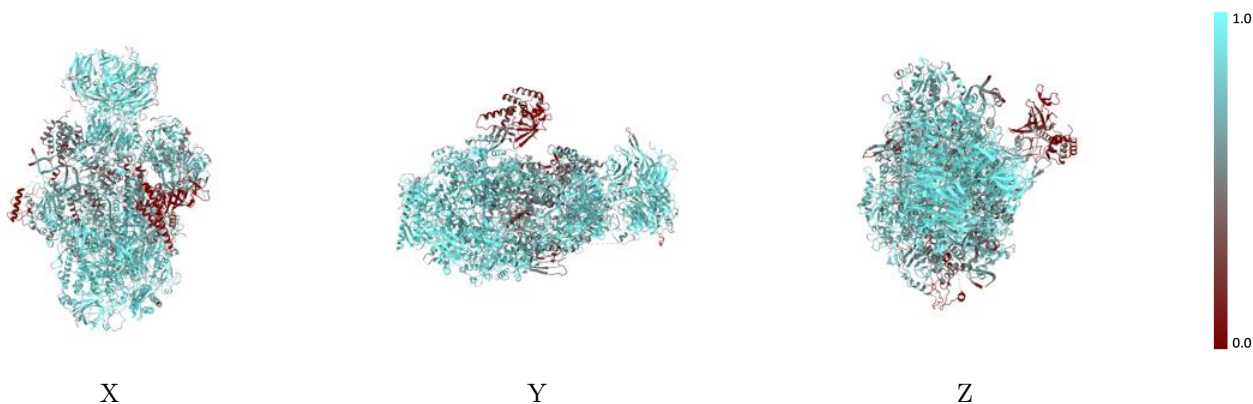


## 9.2 Q-score mapped to coordinate model [i](#)



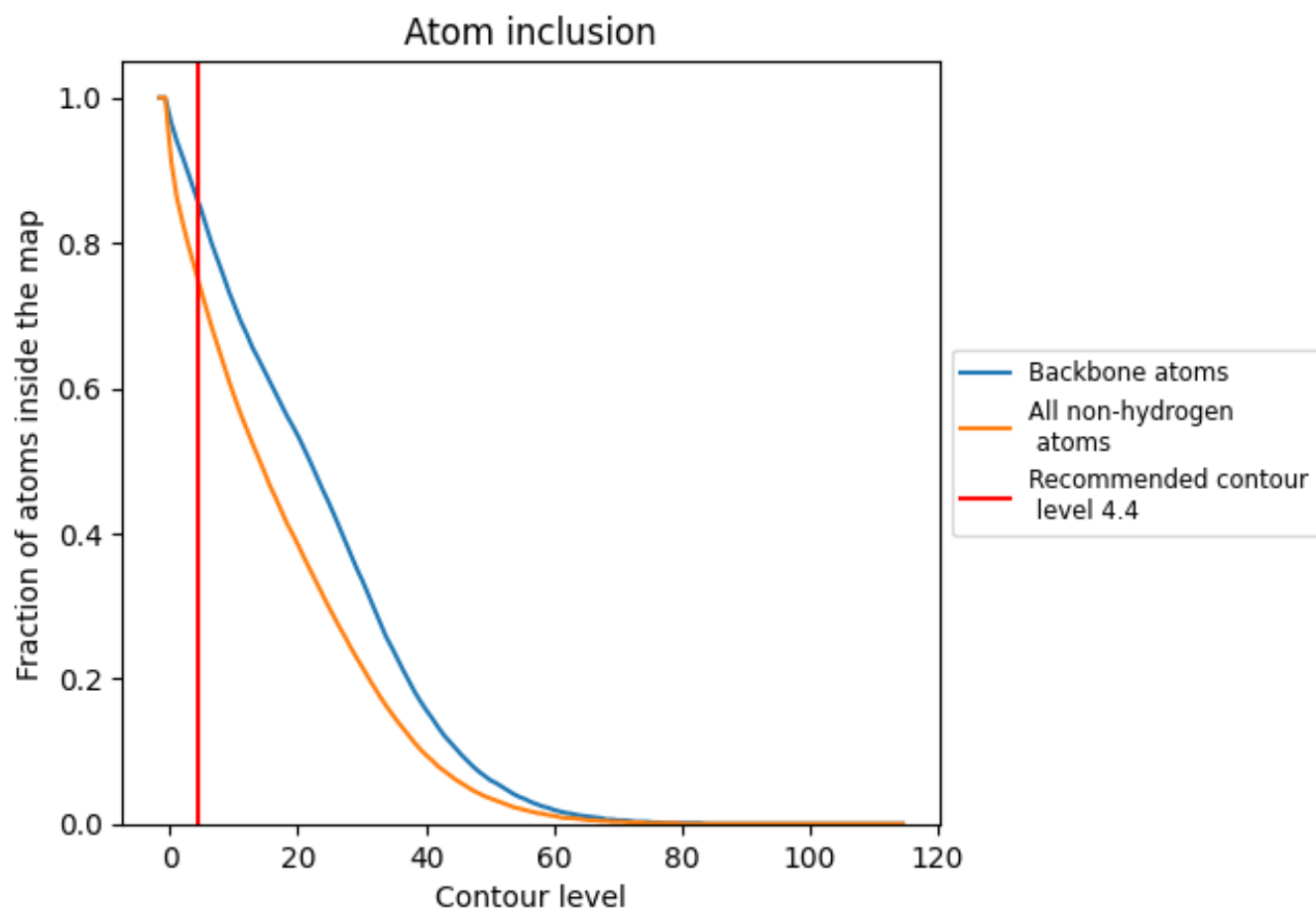
The images above show the model with each residue coloured according to its Q-score. This shows their resolvability in the map with higher Q-score values reflecting better resolvability. Please note: Q-score is calculating the resolvability of atoms, and thus high values are only expected at resolutions at which atoms can be resolved. Low Q-score values may therefore be expected for many entries.

## 9.3 Atom inclusion mapped to coordinate model [i](#)



The images above show the model with each residue coloured according to its atom inclusion. This shows to what extent they are inside the map at the recommended contour level (4.4).































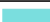















## 9.4 Atom inclusion [i](#)



At the recommended contour level, 86% of all backbone atoms, 75% of all non-hydrogen atoms, are inside the map.

## 9.5 Map-model fit summary

The table lists the average atom inclusion at the recommended contour level (4.4) and Q-score for the entire model and for each chain.

| Chain | Atom inclusion   | Q-score  |
|-------|--|--|
| All   |  0.7490   |  0.4360   |
| A     |  0.7920   |  0.4980   |
| B     |  0.8130   |  0.5090   |
| C     |  0.8510   |  0.5400   |
| D     |  0.1360   |  -0.0040  |
| E     |  0.7950   |  0.4840   |
| F     |  0.8290   |  0.5120   |
| G     |  0.3060   |  0.1540   |
| H     |  0.8190   |  0.5180   |
| I     |  0.6570   |  0.3880   |
| J     |  0.8870   |  0.5680   |
| K     |  0.8580   |  0.5480   |
| L     |  0.7290   |  0.4390   |
| M     |  0.8910   |  0.4930   |
| N     |  0.6400  |  0.2460  |
| T     |  0.7120 |  0.3270 |
| a     |  0.8710 |  0.5110 |
| b     |  0.8450 |  0.4820 |
| c     |  0.5360 |  0.3050 |
| d     |  0.3510 |  0.1260 |
| e     |  0.7330 |  0.3740 |
| f     |  0.6370 |  0.3180 |
| g     |  0.6310 |  0.2400 |

