



Full wwPDB X-ray Structure Validation Report ⓘ

Oct 26, 2023 – 12:36 PM EDT

PDB ID : 8FE7
Title : Crystal structure of human O-GlcNAc transferase (OGT) in complex with an exosite-binding peptide (SMG9) and UDP-GlcNAc
Authors : Xie, J.; Jiang, J.
Deposited on : 2022-12-05
Resolution : 2.98 Å(reported)

This is a Full wwPDB X-ray Structure Validation Report for a publicly released PDB entry.

We welcome your comments at validation@mail.wwpdb.org

A user guide is available at

<https://www.wwpdb.org/validation/2017/XrayValidationReportHelp>

with specific help available everywhere you see the ⓘ symbol.

The types of validation reports are described at

<http://www.wwpdb.org/validation/2017/FAQs#types>.

The following versions of software and data (see [references ⓘ](#)) were used in the production of this report:

MolProbity : 4.02b-467
Mogul : 1.8.5 (274361), CSD as541be (2020)
Xtriage (Phenix) : 1.13
EDS : 2.36
buster-report : 1.1.7 (2018)
Percentile statistics : 20191225.v01 (using entries in the PDB archive December 25th 2019)
Refmac : 5.8.0158
CCP4 : 7.0.044 (Gargrove)
Ideal geometry (proteins) : Engh & Huber (2001)
Ideal geometry (DNA, RNA) : Parkinson et al. (1996)
Validation Pipeline (wwPDB-VP) : 2.36

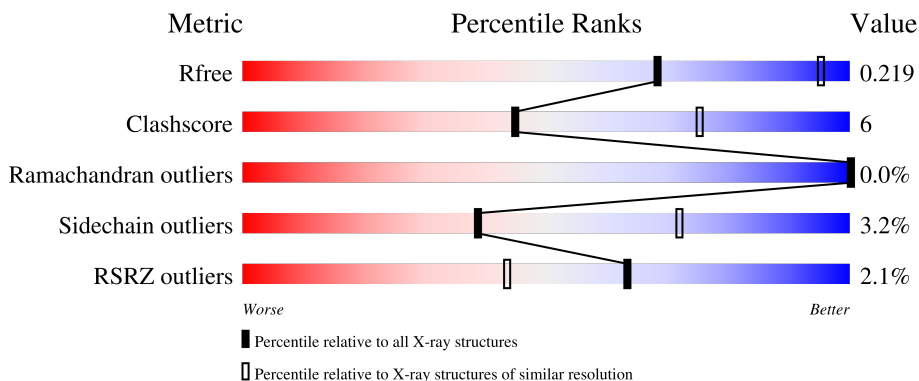
1 Overall quality at a glance i

The following experimental techniques were used to determine the structure:

X-RAY DIFFRACTION

The reported resolution of this entry is 2.98 Å.

Percentile scores (ranging between 0-100) for global validation metrics of the entry are shown in the following graphic. The table shows the number of entries on which the scores are based.



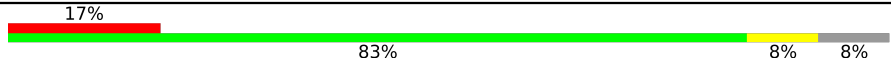


Metric	Whole archive (#Entries)	Similar resolution (#Entries, resolution range(Å))
R_{free}	130704	2754 (3.00-2.96)
Clashscore	141614	3103 (3.00-2.96)
Ramachandran outliers	138981	2993 (3.00-2.96)
Sidechain outliers	138945	2996 (3.00-2.96)
RSRZ outliers	127900	2644 (3.00-2.96)

The table below summarises the geometric issues observed across the polymeric chains and their fit to the electron density. The red, orange, yellow and green segments of the lower bar indicate the fraction of residues that contain outliers for ≥ 3 , 2, 1 and 0 types of geometric quality criteria respectively. A grey segment represents the fraction of residues that are not modelled. The numeric value for each fraction is indicated below the corresponding segment, with a dot representing fractions $\leq 5\%$. The upper red bar (where present) indicates the fraction of residues that have poor fit to the electron density. The numeric value is given above the bar.

Mol	Chain	Length	Quality of chain
1	A	723	<div style="display: flex; align-items: center;"> <div style="width: 4%; height: 10px; background-color: red; margin-right: 5px;"></div> <div style="width: 79%; height: 10px; background-color: green; margin-right: 5px;"></div> <div style="width: 18%; height: 10px; background-color: yellow; margin-right: 5px;"></div> <div style="width: 1%; height: 10px; background-color: orange; margin-right: 5px;"></div> <div style="width: 1%; height: 10px; background-color: grey;"></div> </div> <p style="text-align: center;">4% 79% 18% ..</p>
1	C	723	<div style="display: flex; align-items: center;"> <div style="width: 2%; height: 10px; background-color: red; margin-right: 5px;"></div> <div style="width: 80%; height: 10px; background-color: green; margin-right: 5px;"></div> <div style="width: 16%; height: 10px; background-color: yellow; margin-right: 5px;"></div> <div style="width: 1%; height: 10px; background-color: orange; margin-right: 5px;"></div> <div style="width: 1%; height: 10px; background-color: grey;"></div> </div> <p style="text-align: center;">2% 80% 16% ..</p>
1	E	723	<div style="display: flex; align-items: center;"> <div style="width: 0%; height: 10px; background-color: red; margin-right: 5px;"></div> <div style="width: 83%; height: 10px; background-color: green; margin-right: 5px;"></div> <div style="width: 14%; height: 10px; background-color: yellow; margin-right: 5px;"></div> <div style="width: 1%; height: 10px; background-color: orange; margin-right: 5px;"></div> <div style="width: 1%; height: 10px; background-color: grey;"></div> </div> <p style="text-align: center;">% 83% 14% ..</p>
1	G	723	<div style="display: flex; align-items: center;"> <div style="width: 0%; height: 10px; background-color: red; margin-right: 5px;"></div> <div style="width: 79%; height: 10px; background-color: green; margin-right: 5px;"></div> <div style="width: 17%; height: 10px; background-color: yellow; margin-right: 5px;"></div> <div style="width: 1%; height: 10px; background-color: orange; margin-right: 5px;"></div> <div style="width: 1%; height: 10px; background-color: grey;"></div> </div> <p style="text-align: center;">% 79% 17% ..</p>
2	B	12	<div style="display: flex; align-items: center;"> <div style="width: 58%; height: 10px; background-color: green; margin-right: 5px;"></div> <div style="width: 33%; height: 10px; background-color: yellow; margin-right: 5px;"></div> <div style="width: 8%; height: 10px; background-color: grey;"></div> </div> <p style="text-align: center;">58% 33% 8%</p>

Continued on next page...

Continued from previous page...

Mol	Chain	Length	Quality of chain
2	D	12	 17% 83% 8% 8%
2	F	12	 83% 8% 8%
2	H	12	 8% 83% 8% 8%

2 Entry composition

There are 3 unique types of molecules in this entry. The entry contains 22788 atoms, of which 0 are hydrogens and 0 are deuteriums.

In the tables below, the ZeroOcc column contains the number of atoms modelled with zero occupancy, the AltConf column contains the number of residues with at least one atom in alternate conformation and the Trace column contains the number of residues modelled with at most 2 atoms.

- Molecule 1 is a protein called UDP-N-acetylglucosamine--peptide N-acetylglucosaminyltransferase 110 kDa subunit.

Mol	Chain	Residues	Atoms					ZeroOcc	AltConf	Trace
			Total	C	N	O	S			
1	A	705	5563	3528	975	1022	38	0	0	0
1	C	705	5563	3528	975	1022	38	0	0	0
1	E	705	5563	3528	975	1022	38	0	0	0
1	G	705	5563	3528	975	1022	38	0	0	0

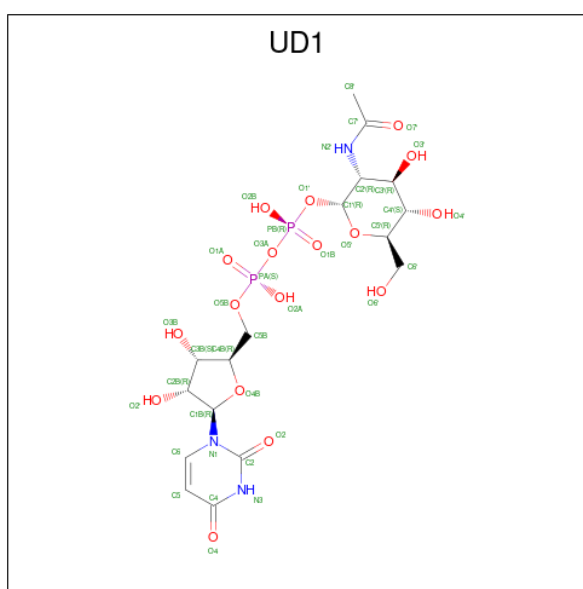
There are 16 discrepancies between the modelled and reference sequences:

Chain	Residue	Modelled	Actual	Comment	Reference
A	309	GLY	-	expression tag	UNP O15294
A	310	PRO	-	expression tag	UNP O15294
A	311	GLY	-	expression tag	UNP O15294
A	312	SER	-	expression tag	UNP O15294
C	309	GLY	-	expression tag	UNP O15294
C	310	PRO	-	expression tag	UNP O15294
C	311	GLY	-	expression tag	UNP O15294
C	312	SER	-	expression tag	UNP O15294
E	309	GLY	-	expression tag	UNP O15294
E	310	PRO	-	expression tag	UNP O15294
E	311	GLY	-	expression tag	UNP O15294
E	312	SER	-	expression tag	UNP O15294
G	309	GLY	-	expression tag	UNP O15294
G	310	PRO	-	expression tag	UNP O15294
G	311	GLY	-	expression tag	UNP O15294
G	312	SER	-	expression tag	UNP O15294

- Molecule 2 is a protein called Nonsense-mediated mRNA decay factor SMG9.

Mol	Chain	Residues	Atoms				ZeroOcc	AltConf	Trace
2	B	11	Total	C	N	O	0	0	0
			95	60	18	17			
2	D	11	Total	C	N	O	0	0	0
			95	60	18	17			
2	F	11	Total	C	N	O	0	0	0
			95	60	18	17			
2	H	11	Total	C	N	O	0	0	0
			95	60	18	17			

- Molecule 3 is URIDINE-DIPHOSPHATE-N-ACETYLGLUCOSAMINE (three-letter code: UD1) (formula: $C_{17}H_{27}N_3O_{17}P_2$) (labeled as "Ligand of Interest" by depositor).

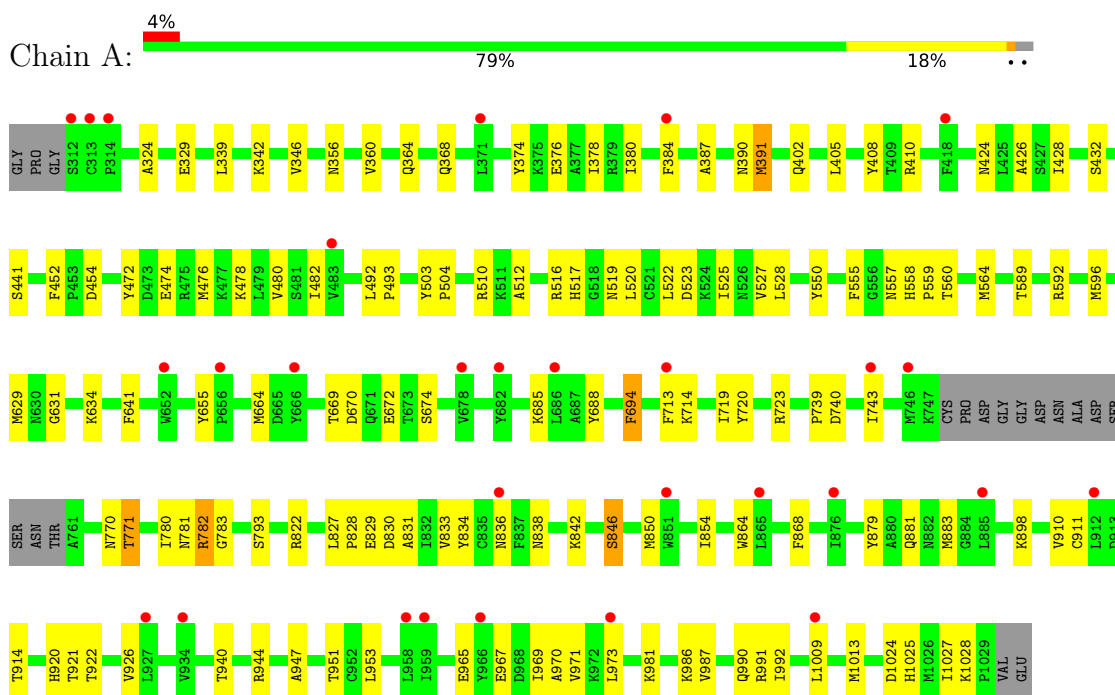


Mol	Chain	Residues	Atoms					ZeroOcc	AltConf
3	A	1	Total	C	N	O	P	0	0
			39	17	3	17	2		
3	C	1	Total	C	N	O	P	0	0
			39	17	3	17	2		
3	E	1	Total	C	N	O	P	0	0
			39	17	3	17	2		
3	G	1	Total	C	N	O	P	0	0
			39	17	3	17	2		

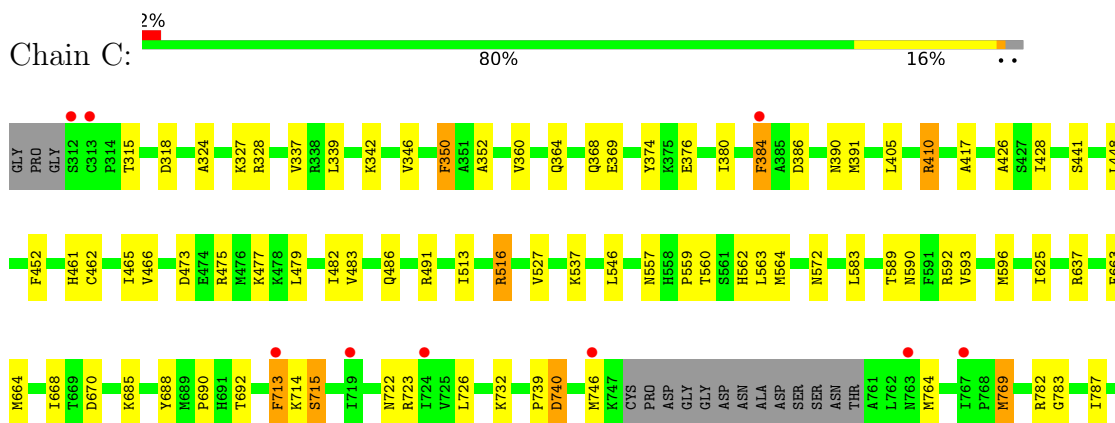
3 Residue-property plots

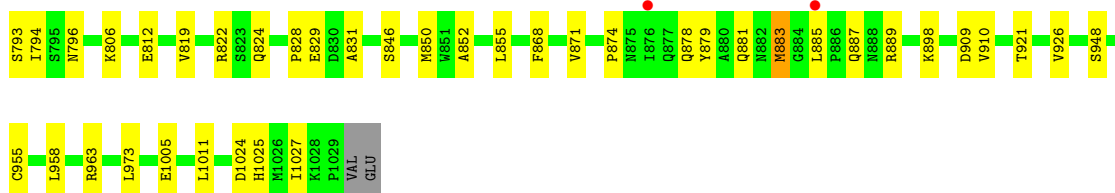
These plots are drawn for all protein, RNA, DNA and oligosaccharide chains in the entry. The first graphic for a chain summarises the proportions of the various outlier classes displayed in the second graphic. The second graphic shows the sequence view annotated by issues in geometry and electron density. Residues are color-coded according to the number of geometric quality criteria for which they contain at least one outlier: green = 0, yellow = 1, orange = 2 and red = 3 or more. A red dot above a residue indicates a poor fit to the electron density ($RSRZ > 2$). Stretches of 2 or more consecutive residues without any outlier are shown as a green connector. Residues present in the sample, but not in the model, are shown in grey.

- Molecule 1: UDP-N-acetylglucosamine--peptide N-acetylglucosaminyltransferase 110 kDa subunit

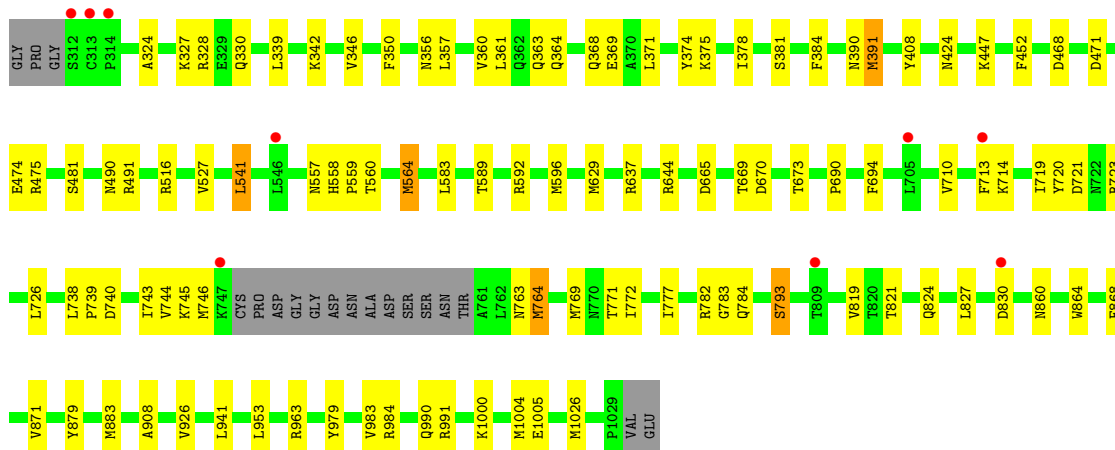
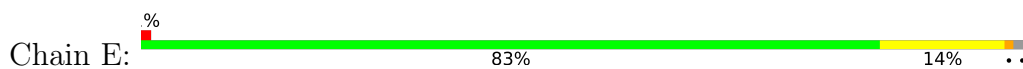


- Molecule 1: UDP-N-acetylglucosamine--peptide N-acetylglucosaminyltransferase 110 kDa subunit

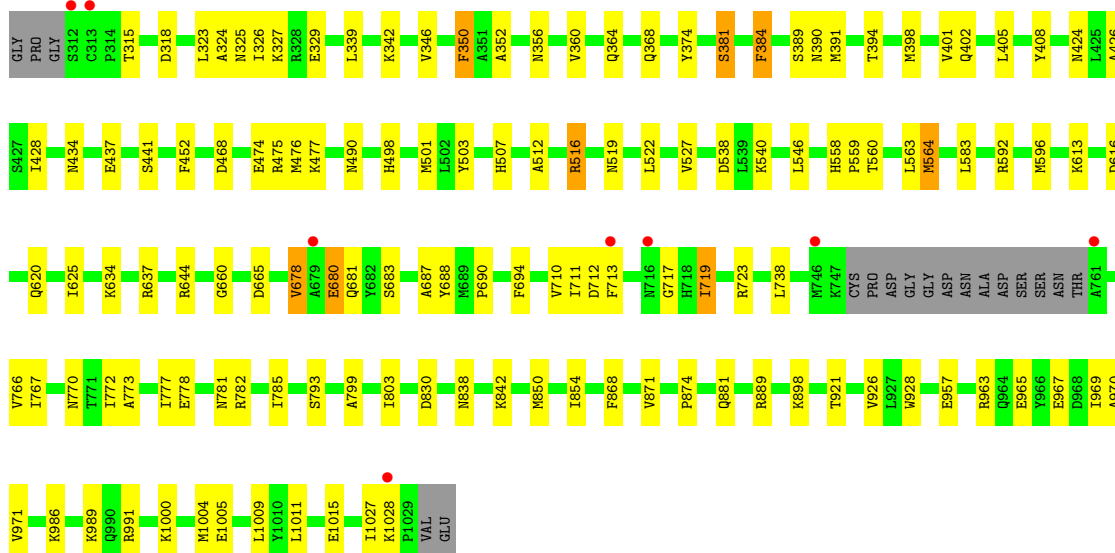
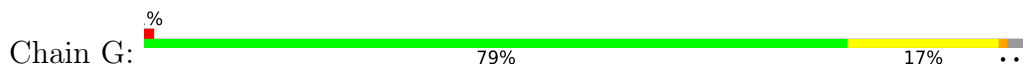




- Molecule 1: UDP-N-acetylglucosamine--peptide N-acetylglucosaminyltransferase 110 kDa subunit



- Molecule 1: UDP-N-acetylglucosamine--peptide N-acetylglucosaminyltransferase 110 kDa subunit




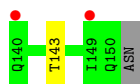
- Molecule 2: Nonsense-mediated mRNA decay factor SMG9

Chain B:  58% 33% 8%




- Molecule 2: Nonsense-mediated mRNA decay factor SMG9

Chain D:  17% 83% 8% 8%




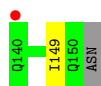
- Molecule 2: Nonsense-mediated mRNA decay factor SMG9

Chain F:  83% 8% 8%



- Molecule 2: Nonsense-mediated mRNA decay factor SMG9

Chain H:  8% 83% 8% 8%



4 Data and refinement statistics i

Property	Value	Source
Space group	P 3 2 1	Depositor
Cell constants a, b, c, α , β , γ	273.67Å 273.67Å 143.14Å 90.00° 90.00° 120.00°	Depositor
Resolution (Å)	118.50 – 2.98 118.50 – 2.98	Depositor EDS
% Data completeness (in resolution range)	99.4 (118.50-2.98) 99.4 (118.50-2.98)	Depositor EDS
R_{merge}	(Not available)	Depositor
R_{sym}	(Not available)	Depositor
$\langle I/\sigma(I) \rangle$ ¹	2.25 (at 2.96Å)	Xtrriage
Refinement program	PHENIX 1.20.1_4487	Depositor
R, R_{free}	0.186 , 0.217 0.188 , 0.219	Depositor DCC
R_{free} test set	1987 reflections (1.59%)	wwPDB-VP
Wilson B-factor (Å ²)	71.9	Xtrriage
Anisotropy	0.398	Xtrriage
Bulk solvent k_{sol} (e/Å ³), B_{sol} (Å ²)	0.33 , 40.3	EDS
L-test for twinning ²	$\langle L \rangle = 0.50$, $\langle L^2 \rangle = 0.33$	Xtrriage
Estimated twinning fraction	0.009 for -h,-k,l	Xtrriage
F_o, F_c correlation	0.95	EDS
Total number of atoms	22788	wwPDB-VP
Average B, all atoms (Å ²)	74.0	wwPDB-VP

Xtrriage's analysis on translational NCS is as follows: *The largest off-origin peak in the Patterson function is 2.38% of the height of the origin peak. No significant pseudotranslation is detected.*

¹Intensities estimated from amplitudes.

²Theoretical values of $\langle |L| \rangle$, $\langle L^2 \rangle$ for acentric reflections are 0.5, 0.333 respectively for untwinned datasets, and 0.375, 0.2 for perfectly twinned datasets.

5 Model quality [i](#)

5.1 Standard geometry [i](#)

Bond lengths and bond angles in the following residue types are not validated in this section: UD1

The Z score for a bond length (or angle) is the number of standard deviations the observed value is removed from the expected value. A bond length (or angle) with $|Z| > 5$ is considered an outlier worth inspection. RMSZ is the root-mean-square of all Z scores of the bond lengths (or angles).

Mol	Chain	Bond lengths		Bond angles	
		RMSZ	# Z >5	RMSZ	# Z >5
1	A	0.26	0/5693	0.49	0/7722
1	C	0.26	0/5693	0.49	0/7722
1	E	0.26	0/5693	0.47	0/7722
1	G	0.26	0/5693	0.48	0/7722
2	B	0.26	0/97	0.62	0/132
2	D	0.23	0/97	0.52	0/132
2	F	0.24	0/97	0.52	0/132
2	H	0.25	0/97	0.54	0/132
All	All	0.26	0/23160	0.48	0/31416

There are no bond length outliers.

There are no bond angle outliers.

There are no chirality outliers.

There are no planarity outliers.

5.2 Too-close contacts [i](#)

In the following table, the Non-H and H(model) columns list the number of non-hydrogen atoms and hydrogen atoms in the chain respectively. The H(added) column lists the number of hydrogen atoms added and optimized by MolProbity. The Clashes column lists the number of clashes within the asymmetric unit, whereas Symm-Clashes lists symmetry-related clashes.

Mol	Chain	Non-H	H(model)	H(added)	Clashes	Symm-Clashes
1	A	5563	0	5536	83	0
1	C	5563	0	5536	74	0
1	E	5563	0	5536	61	0
1	G	5563	0	5536	74	0
2	B	95	0	94	3	0

Continued on next page...

Continued from previous page...

Mol	Chain	Non-H	H(model)	H(added)	Clashes	Symm-Clashes
2	D	95	0	94	1	0
2	F	95	0	94	1	0
2	H	95	0	94	1	0
3	A	39	0	25	5	0
3	C	39	0	25	3	0
3	E	39	0	25	2	0
3	G	39	0	25	4	0
All	All	22788	0	22620	293	0

The all-atom clashscore is defined as the number of clashes found per 1000 atoms (including hydrogen atoms). The all-atom clashscore for this structure is 6.

All (293) close contacts within the same asymmetric unit are listed below, sorted by their clash magnitude.

Atom-1	Atom-2	Interatomic distance (Å)	Clash overlap (Å)
1:A:770:ASN:OD1	1:A:771:THR:N	2.17	0.77
1:G:364:GLN:HB3	1:G:527:VAL:HG21	1.68	0.75
1:G:368:GLN:OE1	1:G:368:GLN:N	2.18	0.73
1:C:878:GLN:NE2	1:C:881:GLN:OE1	2.22	0.72
1:E:559:PRO:HB2	3:E:1101:UD1:H6'2	1.72	0.71
1:C:563:LEU:HD21	1:C:921:THR:HG23	1.73	0.70
1:G:315:THR:HG23	1:G:318:ASP:H	1.57	0.70
1:G:616:ASP:O	1:G:620:GLN:HG3	1.92	0.70
1:C:670:ASP:OD2	1:C:692:THR:HA	1.92	0.69
1:G:850:MET:O	1:G:854:ILE:HD12	1.92	0.69
1:E:583:LEU:HD22	1:E:637:ARG:HD3	1.74	0.69
1:G:583:LEU:HD22	1:G:637:ARG:HD3	1.75	0.69
1:A:836:ASN:HD21	1:A:914:THR:HG23	1.59	0.68
1:A:720:TYR:HD2	1:A:723:ARG:HG3	1.60	0.67
1:C:557:ASN:HB2	1:C:589:THR:HG21	1.76	0.66
1:E:745:LYS:H	1:E:745:LYS:HD2	1.59	0.66
1:A:991:ARG:HG2	1:A:992:ILE:HD12	1.76	0.66
1:G:519:ASN:HA	1:G:522:LEU:HD23	1.78	0.65
1:G:559:PRO:HB2	3:G:1101:UD1:H6'2	1.78	0.65
1:G:592:ARG:O	1:G:596:MET:HG3	1.95	0.65
1:C:559:PRO:HB2	3:C:1101:UD1:H6'2	1.78	0.65
1:A:474:GLU:OE2	1:A:474:GLU:N	2.17	0.65
1:C:955:CYS:HB3	1:C:958:LEU:HD12	1.79	0.65
1:C:482:ILE:O	1:C:486:GLN:HG3	1.98	0.64
1:E:740:ASP:OD1	1:E:740:ASP:N	2.32	0.62
1:C:787:ILE:HG13	1:C:794:ILE:HB	1.80	0.62

Continued on next page...

Continued from previous page...

Atom-1	Atom-2	Interatomic distance (Å)	Clash overlap (Å)
1:C:590:ASN:HA	1:C:593:VAL:HG12	1.81	0.62
1:E:719:ILE:HG21	1:E:744:VAL:HG21	1.83	0.61
1:G:356:ASN:O	1:G:360:VAL:HG23	2.00	0.61
1:C:740:ASP:OD1	1:C:740:ASP:N	2.34	0.61
1:C:846:SER:O	1:C:850:MET:HG3	2.01	0.61
1:E:324:ALA:HB2	1:E:339:LEU:HB2	1.83	0.61
1:G:512:ALA:O	1:G:516:ARG:HG2	2.01	0.61
1:E:560:THR:HG22	1:E:564:MET:HE3	1.83	0.60
1:G:476:MET:HE3	1:G:503:TYR:HD1	1.66	0.60
1:A:558:HIS:HD2	1:A:560:THR:H	1.50	0.60
1:A:559:PRO:HB2	3:A:1101:UD1:H6'2	1.84	0.60
1:A:410:ARG:HH21	1:C:410:ARG:NH2	1.99	0.60
1:C:690:PRO:HG2	1:C:1005:GLU:HG2	1.83	0.60
1:A:947:ALA:O	1:A:951:THR:HG23	2.02	0.60
1:C:461:HIS:CE1	1:C:465:ILE:HD11	2.37	0.60
1:C:324:ALA:HB2	1:C:339:LEU:HB2	1.85	0.59
1:G:773:ALA:O	1:G:777:ILE:HD12	2.02	0.59
1:E:979:TYR:O	1:E:983:VAL:HG23	2.03	0.59
1:A:525:ILE:HA	1:A:528:LEU:HD23	1.84	0.59
1:A:965:GLU:O	1:A:969:ILE:HG13	2.03	0.59
1:C:405:LEU:HD13	1:C:428:ILE:HG21	1.84	0.59
1:E:557:ASN:HB2	1:E:589:THR:HG21	1.83	0.59
1:A:476:MET:O	1:A:480:VAL:HG23	2.02	0.58
1:A:740:ASP:OD1	1:A:740:ASP:N	2.35	0.58
1:G:738:LEU:HD22	1:G:772:ILE:HD13	1.84	0.58
1:C:376:GLU:O	1:C:380:ILE:HD12	2.04	0.58
1:A:472:TYR:O	1:A:476:MET:HG2	2.04	0.57
1:G:770:ASN:ND2	1:G:772:ILE:H	2.03	0.57
1:C:592:ARG:O	1:C:596:MET:HG3	2.04	0.56
1:E:644:ARG:NH2	1:E:665:ASP:OD2	2.38	0.56
1:A:376:GLU:O	1:A:380:ILE:HD12	2.04	0.56
1:E:471:ASP:HB3	1:E:474:GLU:HG2	1.87	0.56
1:C:713:PHE:HD1	1:C:713:PHE:H	1.53	0.56
1:G:563:LEU:HD21	1:G:921:THR:HG23	1.87	0.56
1:C:723:ARG:NE	1:C:829:GLU:O	2.34	0.56
1:C:714:LYS:HD3	1:C:715:SER:N	2.20	0.56
1:C:337:VAL:HG13	1:C:360:VAL:HG11	1.89	0.55
1:A:854:ILE:HG12	1:A:970:ALA:HB3	1.87	0.55
1:E:491:ARG:N	1:E:516:ARG:HH22	2.04	0.55
1:G:678:VAL:O	1:G:681:GLN:HG2	2.06	0.55
1:E:592:ARG:O	1:E:596:MET:HG3	2.07	0.55

Continued on next page...

Continued from previous page...

Atom-1	Atom-2	Interatomic distance (Å)	Clash overlap (Å)
1:C:560:THR:O	1:C:564:MET:HG3	2.07	0.55
1:G:546:LEU:HD21	1:G:625:ILE:HD12	1.88	0.55
1:E:558:HIS:CD2	1:E:559:PRO:HD2	2.42	0.55
1:G:342:LYS:O	1:G:346:VAL:HG23	2.07	0.55
1:A:739:PRO:HG2	1:A:740:ASP:OD1	2.07	0.54
1:C:739:PRO:HG2	1:C:740:ASP:OD1	2.07	0.54
1:C:583:LEU:HD22	1:C:637:ARG:HD3	1.88	0.54
1:A:558:HIS:CD2	1:A:560:THR:H	2.26	0.54
1:A:634:LYS:N	1:A:634:LYS:HD2	2.23	0.54
1:A:364:GLN:HB3	1:A:527:VAL:HG21	1.89	0.54
1:C:783:GLY:O	2:D:143:THR:OG1	2.25	0.54
1:E:374:TYR:CZ	1:E:390:ASN:HB3	2.42	0.54
1:A:557:ASN:HB2	1:A:589:THR:HG21	1.91	0.53
1:E:739:PRO:HG2	1:E:740:ASP:OD1	2.08	0.53
1:C:688:TYR:CD2	1:C:1027:ILE:HG23	2.44	0.53
1:E:782:ARG:HD3	1:E:784:GLN:NE2	2.23	0.53
1:G:401:VAL:HG13	1:G:428:ILE:HD12	1.90	0.53
1:C:364:GLN:HB3	1:C:527:VAL:HG11	1.90	0.53
1:C:663:PHE:HD1	1:C:664:MET:HE2	1.73	0.53
1:A:922:THR:O	1:A:926:VAL:HG12	2.10	0.52
1:E:746:MET:HE3	1:E:764:MET:HB2	1.90	0.52
1:A:879:TYR:O	1:A:883:MET:HG3	2.07	0.52
1:A:986:LYS:O	1:A:990:GLN:HG2	2.09	0.52
1:G:723:ARG:NH2	1:G:830:ASP:HA	2.24	0.52
1:C:670:ASP:OD2	1:C:948:SER:OG	2.28	0.52
1:A:555:PHE:O	1:A:592:ARG:HD3	2.09	0.52
1:A:967:GLU:O	1:A:971:VAL:HG13	2.09	0.52
1:E:560:THR:O	1:E:564:MET:HG3	2.09	0.52
1:G:778:GLU:OE2	1:G:782:ARG:HD2	2.10	0.52
1:E:327:LYS:HD3	1:E:330:GLN:OE1	2.10	0.51
1:G:688:TYR:HD2	1:G:1027:ILE:HG23	1.74	0.51
1:E:368:GLN:H	1:E:368:GLN:CD	2.12	0.51
1:A:781:ASN:HD21	2:B:149:ILE:H	1.59	0.51
1:A:476:MET:HE2	1:A:504:PRO:HD3	1.92	0.51
1:A:342:LYS:O	1:A:346:VAL:HG23	2.10	0.51
1:A:405:LEU:HD13	1:A:428:ILE:HG21	1.91	0.51
1:C:828:PRO:HG2	1:C:831:ALA:HB3	1.93	0.51
1:E:491:ARG:O	1:E:516:ARG:NH2	2.44	0.51
1:G:468:ASP:O	1:G:475:ARG:NH2	2.43	0.51
1:G:434:ASN:HB3	1:G:437:GLU:OE1	2.11	0.50
1:G:560:THR:O	1:G:564:MET:HG3	2.11	0.50

Continued on next page...

Continued from previous page...

Atom-1	Atom-2	Interatomic distance (Å)	Clash overlap (Å)
1:G:957:GLU:OE2	1:G:986:LYS:HE2	2.11	0.50
1:G:854:ILE:HG12	1:G:970:ALA:HB3	1.92	0.50
1:G:963:ARG:O	1:G:967:GLU:HG3	2.11	0.50
1:E:328:ARG:NH2	1:E:363:GLN:OE1	2.44	0.50
1:G:838:ASN:HB3	1:G:842:LYS:HD2	1.93	0.50
1:G:325:ASN:O	1:G:329:GLU:HG2	2.12	0.50
1:C:426:ALA:HB2	1:C:441:SER:HB2	1.93	0.50
1:G:1000:LYS:O	1:G:1004:MET:HG3	2.11	0.50
1:C:516:ARG:HG2	1:C:516:ARG:HH11	1.76	0.49
1:E:726:LEU:HG	1:E:819:VAL:HG22	1.94	0.49
1:G:690:PRO:HG2	1:G:1005:GLU:HG2	1.94	0.49
1:E:468:ASP:O	1:E:475:ARG:NH2	2.45	0.49
1:E:713:PHE:HA	1:E:769:MET:HE3	1.93	0.49
3:E:1101:UD1:H1'	3:E:1101:UD1:O1A	2.11	0.49
1:E:720:TYR:CD2	1:E:723:ARG:HG3	2.48	0.49
1:E:738:LEU:HD11	1:E:772:ILE:HG21	1.95	0.49
1:G:688:TYR:CD2	1:G:1027:ILE:HG23	2.47	0.49
1:C:878:GLN:HE21	1:C:878:GLN:HA	1.77	0.49
1:A:503:TYR:O	1:A:510:ARG:NH1	2.46	0.49
1:E:447:LYS:HB3	1:E:447:LYS:HE2	1.53	0.49
1:G:644:ARG:NH2	1:G:665:ASP:OD1	2.46	0.49
1:A:846:SER:O	1:A:850:MET:HG3	2.13	0.48
1:G:315:THR:H	1:G:318:ASP:HB2	1.78	0.48
1:C:878:GLN:NE2	1:C:878:GLN:HA	2.28	0.48
1:E:541:LEU:HD12	1:E:541:LEU:H	1.78	0.48
1:G:538:ASP:OD1	1:G:540:LYS:HG3	2.13	0.48
1:E:783:GLY:O	2:F:143:THR:OG1	2.31	0.48
1:G:898:LYS:NZ	3:G:1101:UD1:O3B	2.47	0.48
1:A:1009:LEU:O	1:A:1013:MET:HG3	2.12	0.48
1:C:350:PHE:CE1	1:C:352:ALA:HB3	2.49	0.48
1:E:490:ASN:C	1:E:516:ARG:HH22	2.17	0.48
1:E:723:ARG:HH21	1:E:830:ASP:H	1.61	0.48
1:A:1027:ILE:HG22	1:A:1028:LYS:HD3	1.96	0.48
1:A:921:THR:N	3:A:1101:UD1:O2B	2.46	0.48
1:C:417:ALA:HA	1:C:448:LEU:HD22	1.95	0.48
1:C:852:ALA:HA	1:C:885:LEU:HD11	1.95	0.48
1:A:828:PRO:HB2	1:A:831:ALA:HB3	1.96	0.48
1:A:842:LYS:NZ	3:A:1101:UD1:O1B	2.41	0.48
1:E:710:VAL:HG11	1:E:721:ASP:HA	1.96	0.48
1:G:781:ASN:HD21	2:H:149:ILE:H	1.61	0.48
1:G:1011:LEU:O	1:G:1015:GLU:HG2	2.14	0.47

Continued on next page...

Continued from previous page...

Atom-1	Atom-2	Interatomic distance (Å)	Clash overlap (Å)
1:G:324:ALA:HB2	1:G:339:LEU:HB2	1.96	0.47
1:G:921:THR:N	3:G:1101:UD1:O2B	2.47	0.47
1:G:323:LEU:HA	1:G:326:ILE:HG12	1.97	0.47
1:G:957:GLU:OE1	1:G:957:GLU:N	2.26	0.47
1:A:374:TYR:CZ	1:A:390:ASN:HB3	2.50	0.47
1:G:326:ILE:HG13	1:G:327:LYS:N	2.30	0.47
1:E:342:LYS:O	1:E:346:VAL:HG12	2.15	0.47
1:E:356:ASN:O	1:E:360:VAL:HG22	2.15	0.47
1:E:371:LEU:HD21	1:E:375:LYS:HE3	1.96	0.47
1:G:408:TYR:CZ	1:G:424:ASN:HB3	2.50	0.47
1:G:799:ALA:O	1:G:803:ILE:HD12	2.14	0.47
1:E:491:ARG:C	1:E:516:ARG:HH22	2.19	0.47
3:G:1101:UD1:H1'	3:G:1101:UD1:O1A	2.15	0.47
1:C:342:LYS:O	1:C:346:VAL:HG13	2.15	0.46
1:E:364:GLN:HB3	1:E:527:VAL:HG21	1.96	0.46
1:E:821:THR:OG1	1:E:824:GLN:HG3	2.15	0.46
1:A:685:LYS:HD2	1:A:1025:HIS:CE1	2.50	0.46
1:A:782:ARG:HH11	1:A:782:ARG:HG2	1.81	0.46
1:A:953:LEU:HD21	1:A:987:VAL:HG13	1.96	0.46
1:C:491:ARG:HD2	1:C:491:ARG:HA	1.80	0.46
1:E:1000:LYS:O	1:E:1004:MET:HG3	2.15	0.46
1:G:778:GLU:O	1:G:782:ARG:HG3	2.14	0.46
1:C:572:ASN:OD1	1:E:793:SER:HB3	2.15	0.46
1:E:690:PRO:HG2	1:E:1005:GLU:HG2	1.96	0.46
1:A:723:ARG:HA	1:A:822:ARG:HG3	1.96	0.46
1:G:967:GLU:O	1:G:971:VAL:HG23	2.15	0.46
1:E:629:MET:HE3	1:E:629:MET:HB3	1.78	0.46
1:A:910:VAL:HG21	1:A:973:LEU:HB3	1.98	0.46
1:C:726:LEU:HD22	1:C:819:VAL:HG22	1.97	0.46
1:G:389:SER:OG	1:G:424:ASN:ND2	2.49	0.46
1:C:473:ASP:O	1:C:477:LYS:HG3	2.16	0.45
1:C:546:LEU:HD21	1:C:625:ILE:HD12	1.97	0.45
1:C:963:ARG:H	1:C:963:ARG:HE	1.63	0.45
1:A:324:ALA:HB2	1:A:339:LEU:HB2	1.98	0.45
1:C:663:PHE:CD1	1:C:664:MET:HE2	2.51	0.45
1:C:722:ASN:OD1	1:C:723:ARG:NH1	2.39	0.45
1:G:871:VAL:O	1:G:874:PRO:HD2	2.17	0.45
1:E:743:ILE:HG23	1:E:763:ASN:HB2	1.99	0.45
1:A:898:LYS:NZ	3:A:1101:UD1:O3B	2.49	0.45
1:E:673:THR:HG22	1:E:941:LEU:HG	1.99	0.45
1:C:327:LYS:HA	1:C:327:LYS:HD3	1.70	0.45

Continued on next page...

Continued from previous page...

Atom-1	Atom-2	Interatomic distance (Å)	Clash overlap (Å)
1:E:769:MET:HE1	1:E:777:ILE:HD12	1.99	0.45
1:G:712:ASP:OD1	1:G:717:GLY:HA3	2.16	0.45
1:A:478:LYS:O	1:A:482:ILE:HG13	2.16	0.45
1:A:827:LEU:HD13	1:A:833:VAL:HG11	1.97	0.45
1:C:746:MET:HE2	1:C:764:MET:HB2	1.98	0.44
1:E:669:THR:OG1	1:E:670:ASP:N	2.49	0.44
1:A:631:GLY:HA3	1:A:655:TYR:HB2	1.98	0.44
1:A:356:ASN:O	1:A:360:VAL:HG23	2.18	0.44
3:A:1101:UD1:H1'	3:A:1101:UD1:O1A	2.17	0.44
1:C:479:LEU:O	1:C:483:VAL:HG23	2.18	0.44
1:G:405:LEU:HG	1:G:428:ILE:HG21	2.00	0.44
1:A:378:ILE:HD12	1:A:391:MET:CE	2.48	0.44
1:A:592:ARG:HG3	1:A:596:MET:HE3	1.98	0.44
1:A:713:PHE:CG	1:A:714:LYS:N	2.85	0.44
1:C:806:LYS:HB3	1:C:812:GLU:HG3	1.99	0.44
1:C:1025:HIS:HB3	1:C:1027:ILE:HD11	2.00	0.44
1:A:669:THR:OG1	1:A:670:ASP:N	2.51	0.44
1:A:854:ILE:HD11	1:A:967:GLU:HA	1.99	0.44
1:G:426:ALA:HB2	1:G:441:SER:CB	2.48	0.44
1:A:408:TYR:CZ	1:A:424:ASN:HB3	2.52	0.44
1:A:834:TYR:O	1:A:864:TRP:N	2.47	0.44
1:A:713:PHE:HE2	1:A:829:GLU:CD	2.21	0.43
1:C:462:CYS:O	1:C:466:VAL:HG22	2.17	0.43
1:G:394:THR:O	1:G:398:MET:HG3	2.18	0.43
1:A:378:ILE:HD12	1:A:391:MET:HE2	1.98	0.43
1:A:674:SER:O	1:A:688:TYR:OH	2.25	0.43
1:E:714:LYS:HD3	1:E:714:LYS:HA	1.71	0.43
1:G:889:ARG:HD2	1:G:889:ARG:HA	1.76	0.43
1:G:965:GLU:O	1:G:969:ILE:HG13	2.18	0.43
1:A:940:THR:O	1:A:944:ARG:HG3	2.18	0.43
3:C:1101:UD1:H1'	3:C:1101:UD1:O1A	2.18	0.43
1:A:782:ARG:HG2	1:A:782:ARG:NH1	2.33	0.43
1:C:324:ALA:HB2	1:C:339:LEU:CB	2.48	0.43
1:E:361:LEU:HD13	1:E:369:GLU:HB3	2.00	0.43
1:G:374:TYR:CZ	1:G:390:ASN:HB3	2.53	0.43
1:C:879:TYR:O	1:C:883:MET:HG3	2.19	0.43
1:E:738:LEU:HD11	1:E:772:ILE:HG12	2.00	0.43
1:G:680:GLU:H	1:G:680:GLU:HG3	1.66	0.43
1:E:879:TYR:O	1:E:883:MET:HG3	2.19	0.43
1:A:512:ALA:O	1:A:516:ARG:HG2	2.19	0.43
1:A:780:ILE:O	2:B:145:PRO:HG3	2.19	0.43

Continued on next page...

Continued from previous page...

Atom-1	Atom-2	Interatomic distance (Å)	Clash overlap (Å)
1:A:981:LYS:HB2	1:A:981:LYS:HE3	1.80	0.43
1:E:408:TYR:CZ	1:E:424:ASN:HB3	2.53	0.43
1:G:507:HIS:HB3	1:G:681:GLN:HB3	2.01	0.43
1:G:711:ILE:HG12	1:G:767:ILE:HB	2.01	0.43
1:A:410:ARG:HH21	1:C:410:ARG:HH22	1.66	0.43
1:A:911:CYS:CB	1:A:926:VAL:HG21	2.49	0.43
1:C:562:HIS:ND1	1:C:898:LYS:HE3	2.34	0.43
1:C:921:THR:N	3:C:1101:UD1:O2B	2.52	0.42
1:E:378:ILE:HD12	1:E:391:MET:HE2	2.01	0.42
1:E:378:ILE:HD12	1:E:391:MET:CE	2.48	0.42
1:G:928:TRP:O	1:G:991:ARG:NH1	2.50	0.42
1:A:550:TYR:HB3	1:A:629:MET:SD	2.59	0.42
1:C:796:ASN:OD1	1:C:824:GLN:NE2	2.51	0.42
1:C:855:LEU:O	1:C:889:ARG:NH2	2.44	0.42
1:G:558:HIS:CG	1:G:559:PRO:HD2	2.54	0.42
1:A:378:ILE:HD11	1:A:387:ALA:C	2.39	0.42
1:C:714:LYS:HD3	1:C:715:SER:H	1.85	0.42
1:A:368:GLN:CD	1:A:368:GLN:H	2.22	0.42
1:A:519:ASN:O	1:A:523:ASP:OD2	2.38	0.42
1:C:713:PHE:HA	1:C:769:MET:HG2	2.01	0.42
1:A:522:LEU:O	1:A:525:ILE:HG13	2.19	0.42
1:C:746:MET:CE	1:C:764:MET:HB2	2.49	0.42
1:E:357:LEU:O	1:E:361:LEU:HG	2.19	0.42
1:E:953:LEU:HD12	1:E:990:GLN:HB3	2.02	0.42
1:A:672:GLU:O	1:A:944:ARG:NH2	2.50	0.42
1:G:660:GLY:HA2	1:G:683:SER:HB3	2.02	0.42
1:G:785:ILE:HG23	1:G:803:ILE:HD11	2.01	0.42
1:C:483:VAL:HG11	1:C:513:ILE:HD11	2.02	0.42
1:A:838:ASN:HB3	1:A:842:LYS:HD2	2.02	0.42
1:G:770:ASN:HD21	1:G:772:ILE:HB	1.85	0.42
1:A:641:PHE:HB3	1:A:664:MET:HE2	2.02	0.41
1:A:719:ILE:O	1:A:719:ILE:HD12	2.20	0.41
1:C:822:ARG:NH2	1:C:909:ASP:OD1	2.53	0.41
1:C:1011:LEU:HD23	1:C:1011:LEU:HA	1.90	0.41
1:E:908:ALA:O	1:E:984:ARG:NH1	2.53	0.41
1:A:492:LEU:HD12	1:A:493:PRO:HD2	2.02	0.41
1:C:685:LYS:HG2	1:C:1024:ASP:HA	2.01	0.41
1:C:910:VAL:HG21	1:C:973:LEU:HB3	2.02	0.41
1:C:368:GLN:HG2	1:C:369:GLU:N	2.36	0.41
1:G:360:VAL:O	1:G:364:GLN:HG3	2.21	0.41
1:G:719:ILE:HG13	1:G:719:ILE:O	2.21	0.41

Continued on next page...

Continued from previous page...

Atom-1	Atom-2	Interatomic distance (Å)	Clash overlap (Å)
1:A:694:PHE:CZ	1:A:920:HIS:HB3	2.56	0.41
1:C:391:MET:HE2	1:C:391:MET:HB3	1.86	0.41
1:G:381:SER:HB3	1:G:384:PHE:HB2	2.02	0.41
1:G:490:ASN:HA	1:G:516:ARG:NH2	2.35	0.41
1:E:745:LYS:HD2	1:E:745:LYS:N	2.31	0.41
1:A:685:LYS:HE3	1:A:1024:ASP:HA	2.02	0.41
1:A:783:GLY:O	2:B:143:THR:OG1	2.38	0.41
1:A:911:CYS:HB2	1:A:926:VAL:HG21	2.02	0.41
1:E:827:LEU:HD11	1:E:864:TRP:CZ3	2.56	0.41
1:G:474:GLU:OE2	1:G:477:LYS:HE2	2.21	0.41
1:G:350:PHE:CE1	1:G:352:ALA:HB3	2.56	0.41
1:C:315:THR:HG23	1:C:318:ASP:OD1	2.20	0.40
1:A:743:ILE:N	1:A:743:ILE:HD12	2.36	0.40
1:A:426:ALA:HB2	1:A:441:SER:CB	2.51	0.40
1:E:327:LYS:HD3	1:E:327:LYS:HA	1.79	0.40
1:C:384:PHE:CE1	1:C:386:ASP:HB3	2.56	0.40
1:G:687:ALA:HB1	1:G:1009:LEU:HD21	2.03	0.40
1:A:517:HIS:HA	1:A:520:LEU:HD12	2.04	0.40
1:C:374:TYR:CZ	1:C:390:ASN:HB3	2.57	0.40
1:C:871:VAL:O	1:C:874:PRO:HD2	2.21	0.40
1:G:710:VAL:HG23	1:G:766:VAL:HG13	2.03	0.40

There are no symmetry-related clashes.

5.3 Torsion angles [i](#)

5.3.1 Protein backbone [i](#)

In the following table, the Percentiles column shows the percent Ramachandran outliers of the chain as a percentile score with respect to all X-ray entries followed by that with respect to entries of similar resolution.

The Analysed column shows the number of residues for which the backbone conformation was analysed, and the total number of residues.

Mol	Chain	Analysed	Favoured	Allowed	Outliers	Percentiles	
1	A	701/723 (97%)	680 (97%)	21 (3%)	0	100	100
1	C	701/723 (97%)	685 (98%)	16 (2%)	0	100	100
1	E	701/723 (97%)	688 (98%)	13 (2%)	0	100	100
1	G	701/723 (97%)	682 (97%)	18 (3%)	1 (0%)	51	83

Continued on next page...

Continued from previous page...

Mol	Chain	Analysed	Favoured	Allowed	Outliers	Percentiles	
2	B	9/12 (75%)	9 (100%)	0	0	100	100
2	D	9/12 (75%)	7 (78%)	2 (22%)	0	100	100
2	F	9/12 (75%)	9 (100%)	0	0	100	100
2	H	9/12 (75%)	9 (100%)	0	0	100	100
All	All	2840/2940 (97%)	2769 (98%)	70 (2%)	1 (0%)	100	100

All (1) Ramachandran outliers are listed below:

Mol	Chain	Res	Type
1	G	719	ILE

5.3.2 Protein sidechains [i](#)

In the following table, the Percentiles column shows the percent sidechain outliers of the chain as a percentile score with respect to all X-ray entries followed by that with respect to entries of similar resolution.

The Analysed column shows the number of residues for which the sidechain conformation was analysed, and the total number of residues.

Mol	Chain	Analysed	Rotameric	Outliers	Percentiles	
1	A	605/618 (98%)	589 (97%)	16 (3%)	46	76
1	C	605/618 (98%)	585 (97%)	20 (3%)	38	71
1	E	605/618 (98%)	586 (97%)	19 (3%)	40	73
1	G	605/618 (98%)	583 (96%)	22 (4%)	35	68
2	B	11/12 (92%)	10 (91%)	1 (9%)	9	32
2	D	11/12 (92%)	11 (100%)	0	100	100
2	F	11/12 (92%)	11 (100%)	0	100	100
2	H	11/12 (92%)	11 (100%)	0	100	100
All	All	2464/2520 (98%)	2386 (97%)	78 (3%)	39	72

All (78) residues with a non-rotameric sidechain are listed below:

Mol	Chain	Res	Type
1	A	329	GLU
1	A	384	PHE
1	A	391	MET

Continued on next page...

Continued from previous page...

Mol	Chain	Res	Type
1	A	402	GLN
1	A	432	SER
1	A	452	PHE
1	A	454	ASP
1	A	564	MET
1	A	694	PHE
1	A	771	THR
1	A	782	ARG
1	A	793	SER
1	A	830	ASP
1	A	846	SER
1	A	868	PHE
1	A	881	GLN
2	B	141	ARG
1	C	328	ARG
1	C	350	PHE
1	C	384	PHE
1	C	410	ARG
1	C	452	PHE
1	C	475	ARG
1	C	516	ARG
1	C	537	LYS
1	C	668	ILE
1	C	713	PHE
1	C	715	SER
1	C	732	LYS
1	C	740	ASP
1	C	769	MET
1	C	782	ARG
1	C	793	SER
1	C	868	PHE
1	C	883	MET
1	C	887	GLN
1	C	926	VAL
1	E	350	PHE
1	E	381	SER
1	E	384	PHE
1	E	391	MET
1	E	452	PHE
1	E	481	SER
1	E	541	LEU
1	E	564	MET

Continued on next page...

Continued from previous page...

Mol	Chain	Res	Type
1	E	694	PHE
1	E	764	MET
1	E	771	THR
1	E	793	SER
1	E	860	ASN
1	E	868	PHE
1	E	871	VAL
1	E	926	VAL
1	E	963	ARG
1	E	991	ARG
1	E	1026	MET
1	G	350	PHE
1	G	381	SER
1	G	384	PHE
1	G	391	MET
1	G	402	GLN
1	G	452	PHE
1	G	498	HIS
1	G	501	MET
1	G	516	ARG
1	G	564	MET
1	G	613	LYS
1	G	634	LYS
1	G	678	VAL
1	G	680	GLU
1	G	694	PHE
1	G	713	PHE
1	G	793	SER
1	G	868	PHE
1	G	881	GLN
1	G	926	VAL
1	G	989	LYS
1	G	1028	LYS

Sometimes sidechains can be flipped to improve hydrogen bonding and reduce clashes. All (12) such sidechains are listed below:

Mol	Chain	Res	Type
1	A	322	ASN
1	A	368	GLN
1	A	558	HIS
1	C	322	ASN
1	C	878	GLN

Continued on next page...

Continued from previous page...

Mol	Chain	Res	Type
1	E	784	GLN
1	E	1021	ASN
1	G	770	ASN
1	G	781	ASN
1	G	882	ASN
1	G	990	GLN
2	H	144	GLN

5.3.3 RNA [i](#)

There are no RNA molecules in this entry.

5.4 Non-standard residues in protein, DNA, RNA chains [i](#)

There are no non-standard protein/DNA/RNA residues in this entry.

5.5 Carbohydrates [i](#)

There are no monosaccharides in this entry.

5.6 Ligand geometry [i](#)

4 ligands are modelled in this entry.

In the following table, the Counts columns list the number of bonds (or angles) for which Mogul statistics could be retrieved, the number of bonds (or angles) that are observed in the model and the number of bonds (or angles) that are defined in the Chemical Component Dictionary. The Link column lists molecule types, if any, to which the group is linked. The Z score for a bond length (or angle) is the number of standard deviations the observed value is removed from the expected value. A bond length (or angle) with $|Z| > 2$ is considered an outlier worth inspection. RMSZ is the root-mean-square of all Z scores of the bond lengths (or angles).

Mol	Type	Chain	Res	Link	Bond lengths			Bond angles		
					Counts	RMSZ	$\# Z > 2$	Counts	RMSZ	$\# Z > 2$
3	UD1	C	1101	-	38,41,41	0.33	0	57,62,62	0.67	2 (3%)
3	UD1	E	1101	-	38,41,41	0.34	0	57,62,62	0.71	2 (3%)
3	UD1	G	1101	-	38,41,41	0.34	0	57,62,62	0.69	2 (3%)
3	UD1	A	1101	-	38,41,41	0.34	0	57,62,62	0.71	2 (3%)

In the following table, the Chirals column lists the number of chiral outliers, the number of chiral

centers analysed, the number of these observed in the model and the number defined in the Chemical Component Dictionary. Similar counts are reported in the Torsion and Rings columns. '-' means no outliers of that kind were identified.

Mol	Type	Chain	Res	Link	Chirals	Torsions	Rings
3	UD1	C	1101	-	-	5/26/63/63	0/3/3/3
3	UD1	E	1101	-	-	5/26/63/63	0/3/3/3
3	UD1	G	1101	-	-	3/26/63/63	0/3/3/3
3	UD1	A	1101	-	-	3/26/63/63	0/3/3/3

There are no bond length outliers.

All (8) bond angle outliers are listed below:

Mol	Chain	Res	Type	Atoms	Z	Observed(°)	Ideal(°)
3	G	1101	UD1	O3A-PB-O1'	3.36	109.27	102.48
3	C	1101	UD1	O3A-PB-O1'	3.35	109.24	102.48
3	A	1101	UD1	PB-O1'-C1'	-3.32	106.92	119.74
3	E	1101	UD1	O3A-PB-O1'	3.32	109.17	102.48
3	A	1101	UD1	O3A-PB-O1'	3.09	108.72	102.48
3	E	1101	UD1	PB-O1'-C1'	-2.93	108.40	119.74
3	C	1101	UD1	PB-O1'-C1'	-2.76	109.06	119.74
3	G	1101	UD1	PB-O1'-C1'	-2.72	109.22	119.74

There are no chirality outliers.

All (16) torsion outliers are listed below:

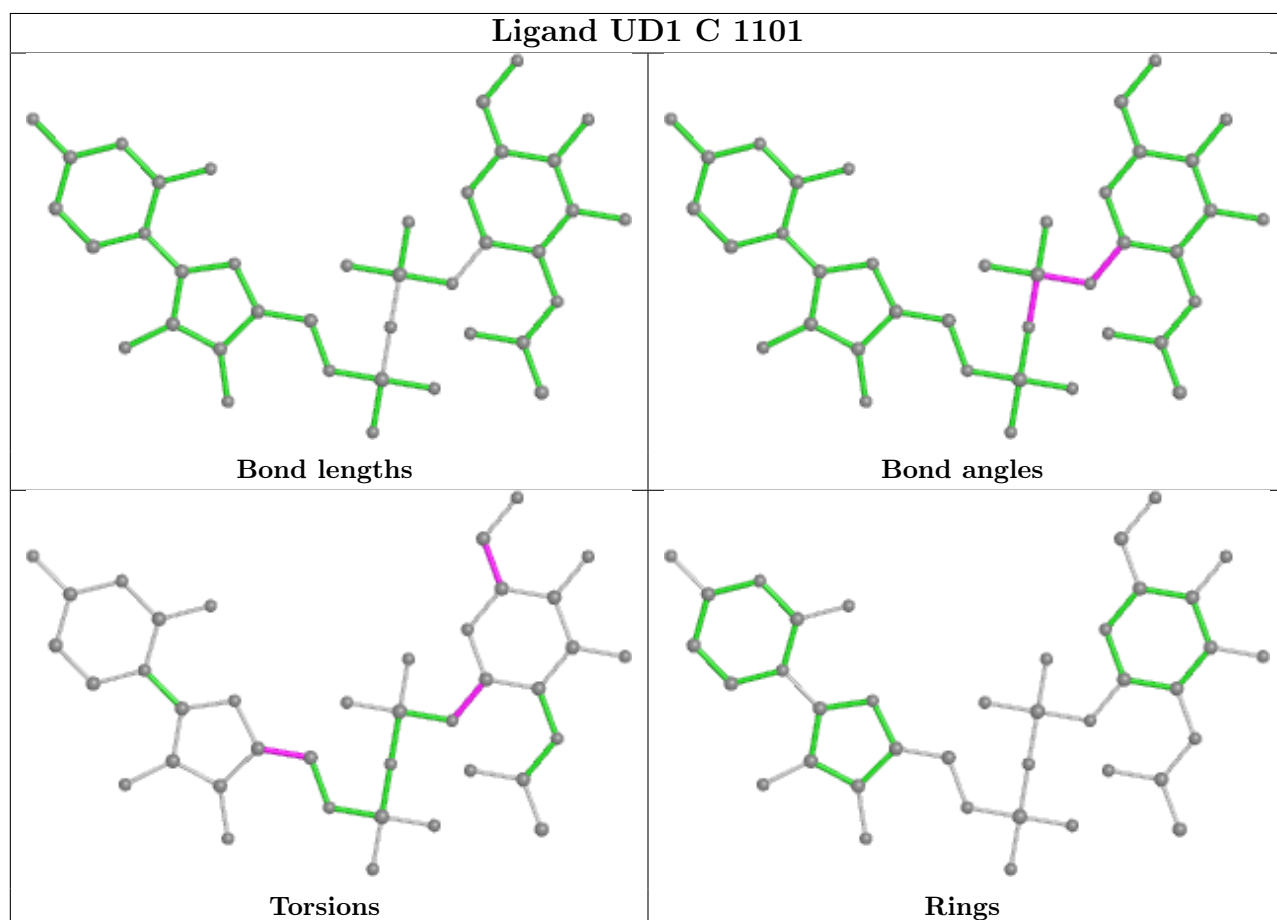
Mol	Chain	Res	Type	Atoms
3	C	1101	UD1	C3B-C4B-C5B-O5B
3	C	1101	UD1	O4B-C4B-C5B-O5B
3	E	1101	UD1	C3B-C4B-C5B-O5B
3	E	1101	UD1	O4B-C4B-C5B-O5B
3	A	1101	UD1	C3B-C4B-C5B-O5B
3	A	1101	UD1	O4B-C4B-C5B-O5B
3	G	1101	UD1	C3B-C4B-C5B-O5B
3	G	1101	UD1	O4B-C4B-C5B-O5B
3	C	1101	UD1	C4'-C5'-C6'-O6'
3	A	1101	UD1	O5'-C1'-O1'-PB
3	C	1101	UD1	O5'-C1'-O1'-PB
3	E	1101	UD1	O5'-C1'-O1'-PB
3	G	1101	UD1	O5'-C1'-O1'-PB
3	C	1101	UD1	O5'-C5'-C6'-O6'
3	E	1101	UD1	C4'-C5'-C6'-O6'
3	E	1101	UD1	O5'-C5'-C6'-O6'

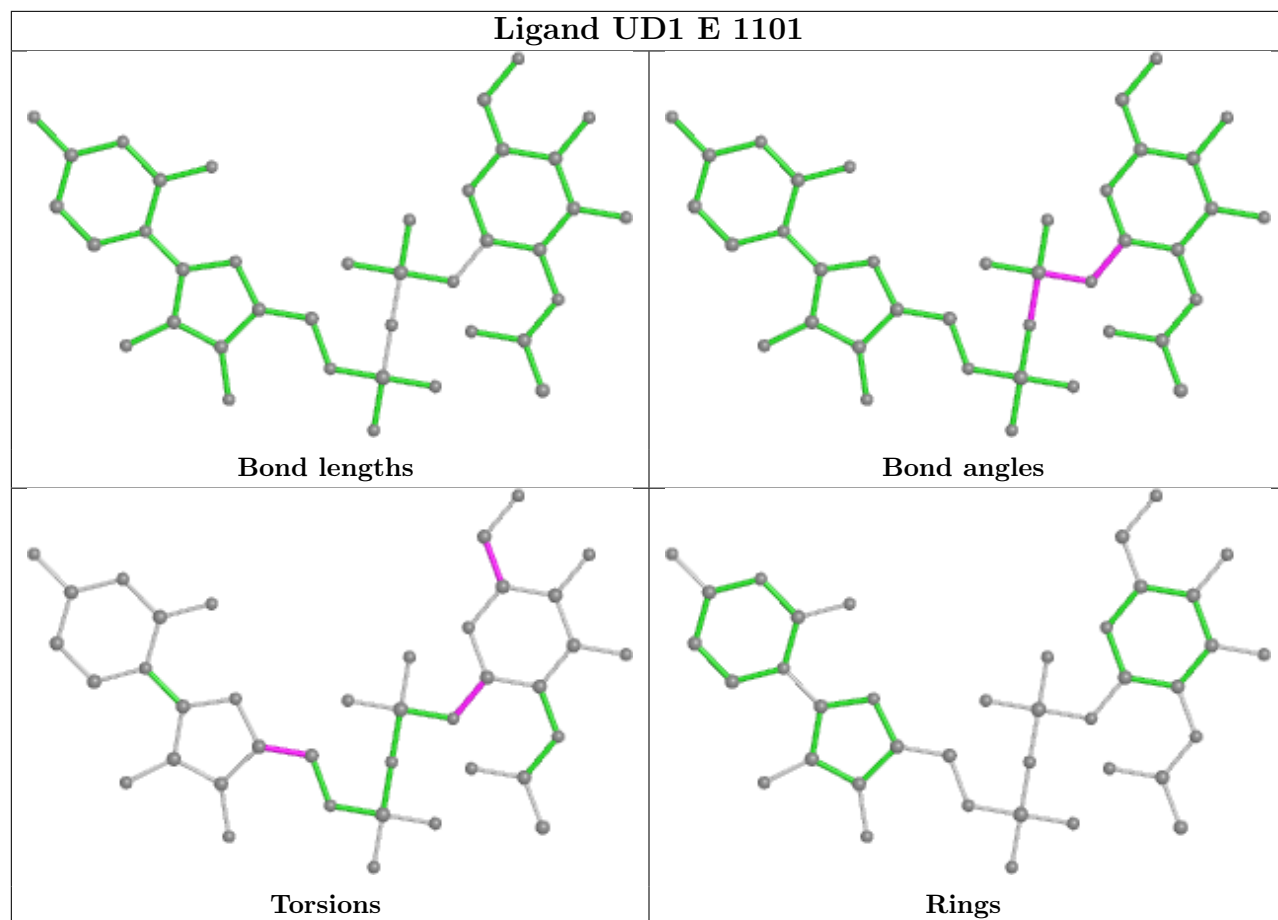
There are no ring outliers.

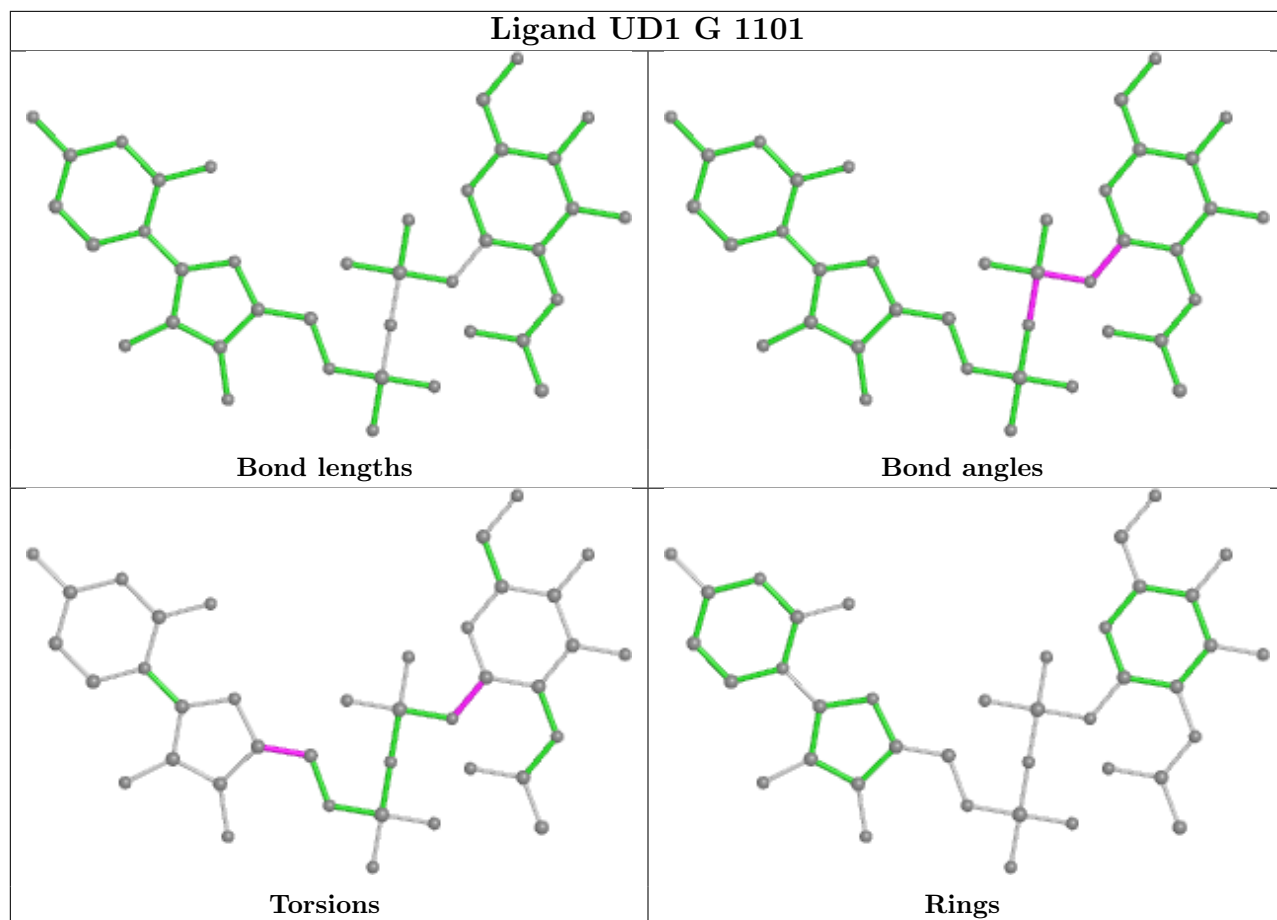
4 monomers are involved in 14 short contacts:

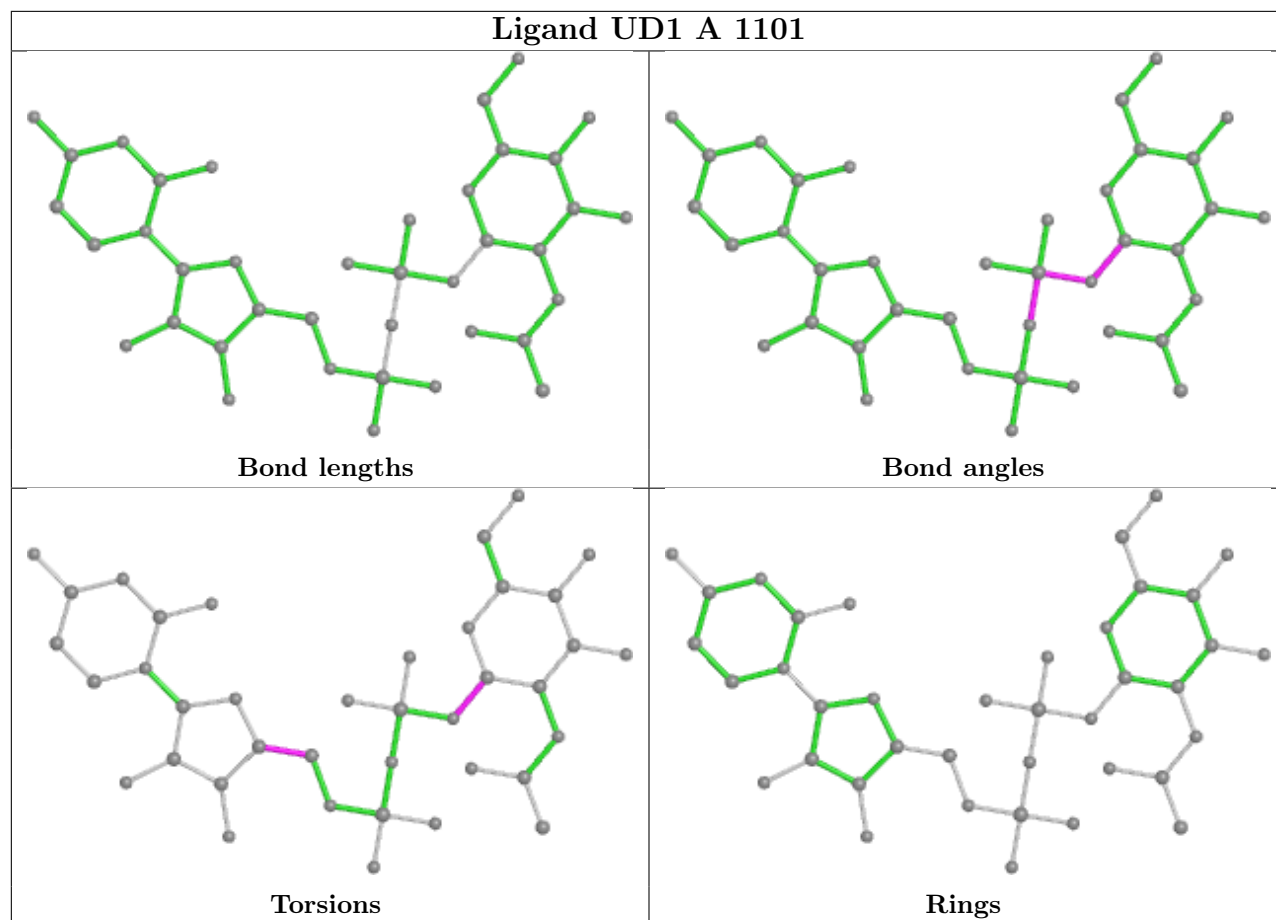
Mol	Chain	Res	Type	Clashes	Symm-Clashes
3	C	1101	UD1	3	0
3	E	1101	UD1	2	0
3	G	1101	UD1	4	0
3	A	1101	UD1	5	0

The following is a two-dimensional graphical depiction of Mogul quality analysis of bond lengths, bond angles, torsion angles, and ring geometry for all instances of the Ligand of Interest. In addition, ligands with molecular weight > 250 and outliers as shown on the validation Tables will also be included. For torsion angles, if less than 5% of the Mogul distribution of torsion angles is within 10 degrees of the torsion angle in question, then that torsion angle is considered an outlier. Any bond that is central to one or more torsion angles identified as an outlier by Mogul will be highlighted in the graph. For rings, the root-mean-square deviation (RMSD) between the ring in question and similar rings identified by Mogul is calculated over all ring torsion angles. If the average RMSD is greater than 60 degrees and the minimal RMSD between the ring in question and any Mogul-identified rings is also greater than 60 degrees, then that ring is considered an outlier. The outliers are highlighted in purple. The color gray indicates Mogul did not find sufficient equivalents in the CSD to analyse the geometry.









5.7 Other polymers [i](#)

There are no such residues in this entry.

5.8 Polymer linkage issues [i](#)

There are no chain breaks in this entry.

6 Fit of model and data

6.1 Protein, DNA and RNA chains

In the following table, the column labelled ‘#RSRZ > 2’ contains the number (and percentage) of RSRZ outliers, followed by percent RSRZ outliers for the chain as percentile scores relative to all X-ray entries and entries of similar resolution. The OWAB column contains the minimum, median, 95th percentile and maximum values of the occupancy-weighted average B-factor per residue. The column labelled ‘Q < 0.9’ lists the number of (and percentage) of residues with an average occupancy less than 0.9.

Mol	Chain	Analysed	<RSRZ>	#RSRZ>2	OWAB(Å ²)	Q<0.9
1	A	705/723 (97%)	0.55	29 (4%) 37 22	53, 80, 108, 172	0
1	C	705/723 (97%)	0.42	11 (1%) 72 52	50, 69, 101, 156	0
1	E	705/723 (97%)	0.42	9 (1%) 77 59	48, 66, 101, 154	0
1	G	705/723 (97%)	0.43	8 (1%) 80 63	52, 66, 98, 166	0
2	B	11/12 (91%)	0.39	0 100 100	78, 84, 122, 137	0
2	D	11/12 (91%)	0.75	2 (18%) 1 0	74, 85, 123, 133	0
2	F	11/12 (91%)	0.25	0 100 100	57, 65, 114, 130	0
2	H	11/12 (91%)	0.41	1 (9%) 9 5	62, 71, 108, 122	0
All	All	2864/2940 (97%)	0.45	60 (2%) 63 43	48, 70, 105, 172	0

All (60) RSRZ outliers are listed below:

Mol	Chain	Res	Type	RSRZ
1	A	713	PHE	3.8
1	G	713	PHE	3.5
1	E	313	CYS	3.5
1	A	973	LEU	3.3
1	A	686	LEU	3.2
1	A	313	CYS	3.1
1	G	746	MET	3.0
1	G	1028	LYS	3.0
1	C	713	PHE	2.9
1	G	313	CYS	2.9
1	A	312	SER	2.9
1	A	656	PRO	2.9
1	E	747	LYS	2.8
1	E	312	SER	2.8
1	C	885	LEU	2.8
1	A	652	TRP	2.6

Continued on next page...

Continued from previous page...

Mol	Chain	Res	Type	RSRZ
1	G	312	SER	2.6
1	G	716	ASN	2.6
1	A	743	ILE	2.6
1	C	724	ILE	2.6
1	A	371	LEU	2.5
1	A	876	ILE	2.5
1	A	851	TRP	2.5
1	A	934	VAL	2.5
1	A	958	LEU	2.4
1	C	746	MET	2.4
1	E	314	PRO	2.4
1	A	682	TYR	2.4
1	E	546	LEU	2.3
1	A	927	LEU	2.3
1	C	767	ILE	2.3
1	A	483	VAL	2.3
1	A	865	LEU	2.3
1	A	912	LEU	2.3
1	A	966	TYR	2.3
1	E	830	ASP	2.2
1	G	761	ALA	2.2
2	D	140	GLN	2.2
1	A	885	LEU	2.2
2	D	149	ILE	2.2
1	C	719	ILE	2.2
1	A	666	TYR	2.2
1	A	384	PHE	2.2
1	G	679	ALA	2.2
1	C	763	ASN	2.1
1	C	313	CYS	2.1
1	A	314	PRO	2.1
1	E	705	LEU	2.1
1	E	809	THR	2.1
1	C	384	PHE	2.1
2	H	140	GLN	2.1
1	A	959	ILE	2.1
1	C	876	ILE	2.1
1	A	678	VAL	2.1
1	A	836	ASN	2.1
1	C	312	SER	2.1
1	A	746	MET	2.1
1	A	1009	LEU	2.0

Continued on next page...

Continued from previous page...

Mol	Chain	Res	Type	RSRZ
1	E	713	PHE	2.0
1	A	418	PHE	2.0

6.2 Non-standard residues in protein, DNA, RNA chains [i](#)

There are no non-standard protein/DNA/RNA residues in this entry.

6.3 Carbohydrates [i](#)

There are no monosaccharides in this entry.

6.4 Ligands [i](#)

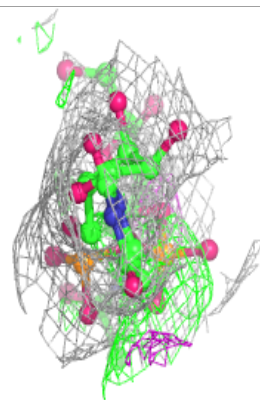
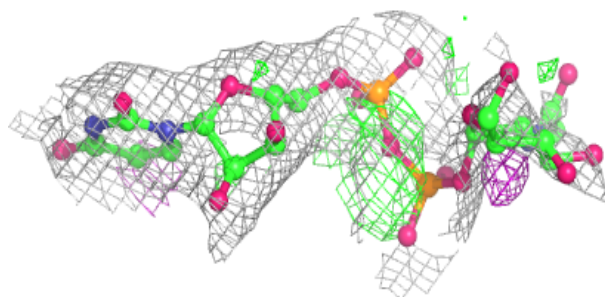
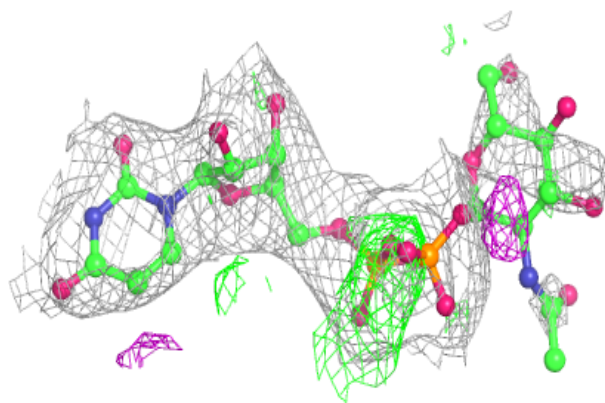
In the following table, the Atoms column lists the number of modelled atoms in the group and the number defined in the chemical component dictionary. The B-factors column lists the minimum, median, 95th percentile and maximum values of B factors of atoms in the group. The column labelled 'Q<0.9' lists the number of atoms with occupancy less than 0.9.

Mol	Type	Chain	Res	Atoms	RSCC	RSR	B-factors(\AA^2)	Q<0.9
3	UD1	G	1101	39/39	0.96	0.29	47,63,83,87	15
3	UD1	C	1101	39/39	0.97	0.29	51,62,83,84	15
3	UD1	A	1101	39/39	0.97	0.30	61,76,97,98	15
3	UD1	E	1101	39/39	0.98	0.30	46,63,83,86	15

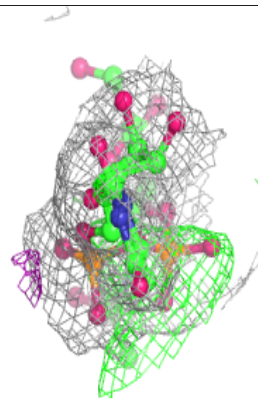
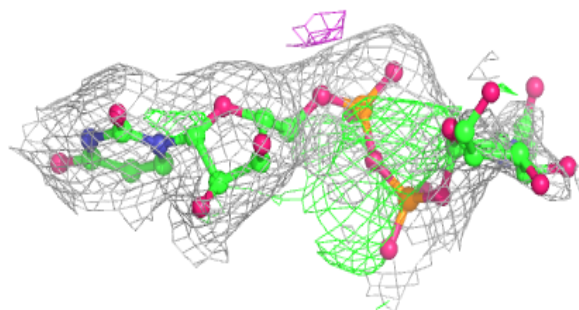
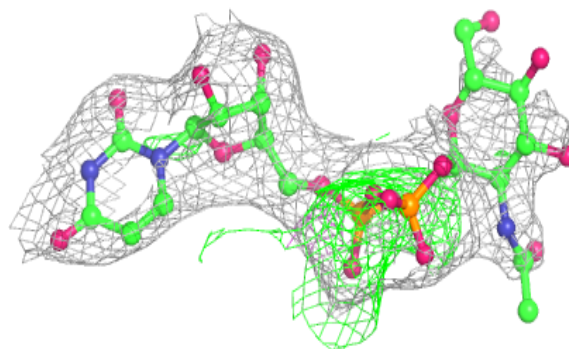
The following is a graphical depiction of the model fit to experimental electron density of all instances of the Ligand of Interest. In addition, ligands with molecular weight > 250 and outliers as shown on the geometry validation Tables will also be included. Each fit is shown from different orientation to approximate a three-dimensional view.

Electron density around UD1 G 1101:

$2mF_o-DF_c$ (at 0.7 rmsd) in gray
 mF_o-DF_c (at 3 rmsd) in purple (negative)
and green (positive)

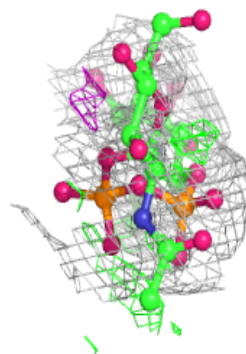
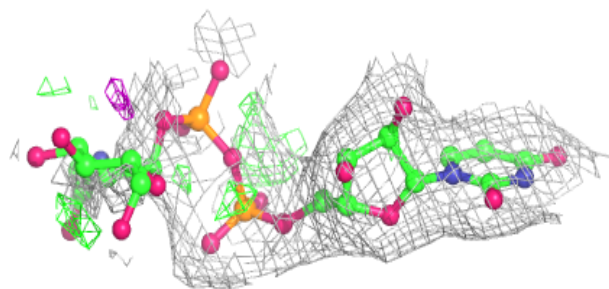
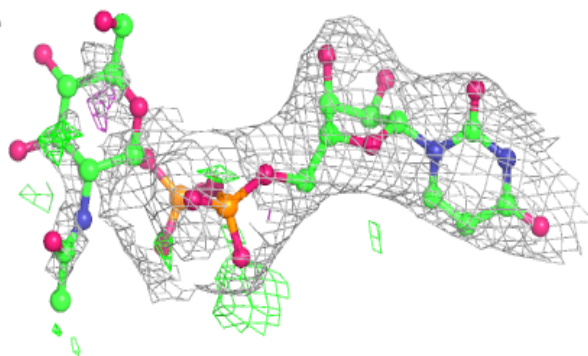
**Electron density around UD1 C 1101:**

$2mF_o-DF_c$ (at 0.7 rmsd) in gray
 mF_o-DF_c (at 3 rmsd) in purple (negative)
and green (positive)

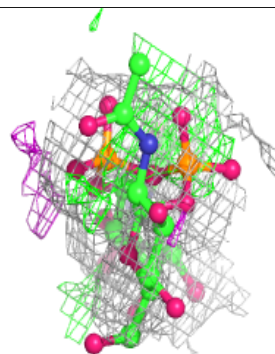
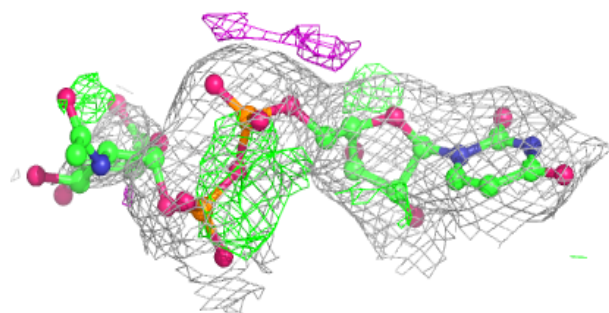
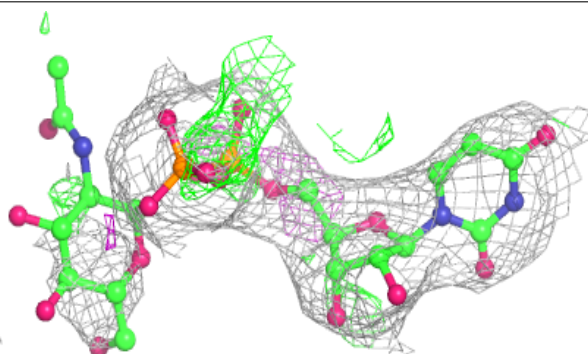


Electron density around UD1 A 1101:

$2mF_o-DF_c$ (at 0.7 rmsd) in gray
 mF_o-DF_c (at 3 rmsd) in purple (negative)
and green (positive)

**Electron density around UD1 E 1101:**

$2mF_o-DF_c$ (at 0.7 rmsd) in gray
 mF_o-DF_c (at 3 rmsd) in purple (negative)
and green (positive)



6.5 Other polymers [i](#)

There are no such residues in this entry.