



# Full wwPDB X-ray Structure Validation Report ⓘ

Jul 10, 2024 – 01:03 am BST

PDB ID : 9FE7  
Title : Crystal Structure of oxidized NuoEF variant P228R(NuoF) from Aquifex aeolicus  
Authors : Wohlwend, D.; Friedrich, T.; Goeppert-Asadollahpour, S.  
Deposited on : 2024-05-17  
Resolution : 2.28 Å(reported)

This is a Full wwPDB X-ray Structure Validation Report for a publicly released PDB entry.

We welcome your comments at [validation@mail.wwpdb.org](mailto:validation@mail.wwpdb.org)

A user guide is available at

<https://www.wwpdb.org/validation/2017/XrayValidationReportHelp>

with specific help available everywhere you see the ⓘ symbol.

The types of validation reports are described at

<http://www.wwpdb.org/validation/2017/FAQs#types>.

---

The following versions of software and data (see [references ⓘ](#)) were used in the production of this report:

MolProbity : 4.02b-467  
Mogul : 1.8.4, CSD as541be (2020)  
Xtriage (Phenix) : 1.13  
EDS : 2.37.1  
buster-report : 1.1.7 (2018)  
Percentile statistics : 20191225.v01 (using entries in the PDB archive December 25th 2019)  
Refmac : 5.8.0158  
CCP4 : 7.0.044 (Gargrove)  
Ideal geometry (proteins) : Engh & Huber (2001)  
Ideal geometry (DNA, RNA) : Parkinson et al. (1996)  
Validation Pipeline (wwPDB-VP) : 2.37.1

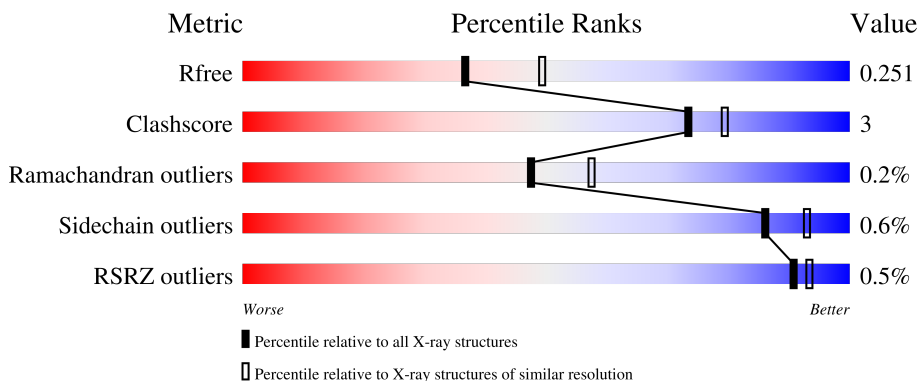
# 1 Overall quality at a glance

The following experimental techniques were used to determine the structure:

*X-RAY DIFFRACTION*

The reported resolution of this entry is 2.28 Å.

Percentile scores (ranging between 0-100) for global validation metrics of the entry are shown in the following graphic. The table shows the number of entries on which the scores are based.



Metric	Whole archive (#Entries)	Similar resolution (#Entries, resolution range(Å))
$R_{free}$	130704	6980 (2.30-2.26)
Clashscore	141614	7711 (2.30-2.26)
Ramachandran outliers	138981	7597 (2.30-2.26)
Sidechain outliers	138945	7598 (2.30-2.26)
RSRZ outliers	127900	6849 (2.30-2.26)

The table below summarises the geometric issues observed across the polymeric chains and their fit to the electron density. The red, orange, yellow and green segments of the lower bar indicate the fraction of residues that contain outliers for  $\geq 3$ , 2, 1 and 0 types of geometric quality criteria respectively. A grey segment represents the fraction of residues that are not modelled. The numeric value for each fraction is indicated below the corresponding segment, with a dot representing fractions  $\leq 5\%$ . The upper red bar (where present) indicates the fraction of residues that have poor fit to the electron density. The numeric value is given above the bar.

Mol	Chain	Length	Quality of chain
1	A	160	
1	C	160	
2	B	434	
2	D	434	

## 2 Entry composition [i](#)

There are 11 unique types of molecules in this entry. The entry contains 9995 atoms, of which 0 are hydrogens and 0 are deuteriums.

In the tables below, the ZeroOcc column contains the number of atoms modelled with zero occupancy, the AltConf column contains the number of residues with at least one atom in alternate conformation and the Trace column contains the number of residues modelled with at most 2 atoms.

- Molecule 1 is a protein called NADH-quinone oxidoreductase subunit E.

Mol	Chain	Residues	Atoms					ZeroOcc	AltConf	Trace
			Total	C	N	O	S			
1	A	156	1268	821	204	234	9	0	0	0
1	C	156	1264	819	204	232	9	0	0	0

- Molecule 2 is a protein called NADH-quinone oxidoreductase subunit F.

Mol	Chain	Residues	Atoms					ZeroOcc	AltConf	Trace
			Total	C	N	O	S			
2	B	417	3287	2113	546	615	13	0	1	0
2	D	417	3288	2115	547	613	13	0	1	0

There are 18 discrepancies between the modelled and reference sequences:

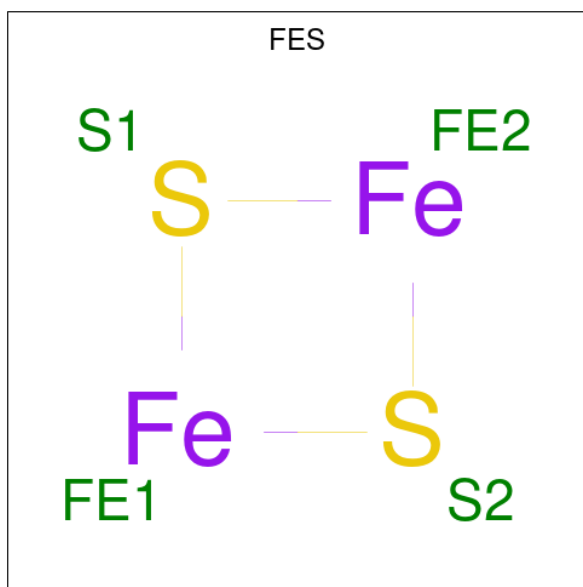
Chain	Residue	Modelled	Actual	Comment	Reference
B	228	ARG	PRO	engineered mutation	UNP O66841
B	427	ALA	-	expression tag	UNP O66841
B	428	GLY	-	expression tag	UNP O66841
B	429	HIS	-	expression tag	UNP O66841
B	430	HIS	-	expression tag	UNP O66841
B	431	HIS	-	expression tag	UNP O66841
B	432	HIS	-	expression tag	UNP O66841
B	433	HIS	-	expression tag	UNP O66841
B	434	HIS	-	expression tag	UNP O66841
D	228	ARG	PRO	engineered mutation	UNP O66841
D	427	ALA	-	expression tag	UNP O66841
D	428	GLY	-	expression tag	UNP O66841
D	429	HIS	-	expression tag	UNP O66841
D	430	HIS	-	expression tag	UNP O66841
D	431	HIS	-	expression tag	UNP O66841
D	432	HIS	-	expression tag	UNP O66841

*Continued on next page...*

Continued from previous page...

Chain	Residue	Modelled	Actual	Comment	Reference
D	433	HIS	-	expression tag	UNP O66841
D	434	HIS	-	expression tag	UNP O66841

- Molecule 3 is FE2/S2 (INORGANIC) CLUSTER (three-letter code: FES) (formula: Fe<sub>2</sub>S<sub>2</sub>) (labeled as "Ligand of Interest" by depositor).



Mol	Chain	Residues	Atoms	ZeroOcc	AltConf
3	A	1	Total Fe S 4 2 2	0	0
3	C	1	Total Fe S 4 2 2	0	0

- Molecule 4 is SULFATE ION (three-letter code: SO4) (formula: O<sub>4</sub>S).



Mol	Chain	Residues	Atoms	ZeroOcc	AltConf
4	A	1	Total O S 5 4 1	0	0
4	A	1	Total O S 5 4 1	0	0
4	C	1	Total O S 5 4 1	0	0
4	C	1	Total O S 5 4 1	0	0

- Molecule 5 is SODIUM ION (three-letter code: NA) (formula: Na).

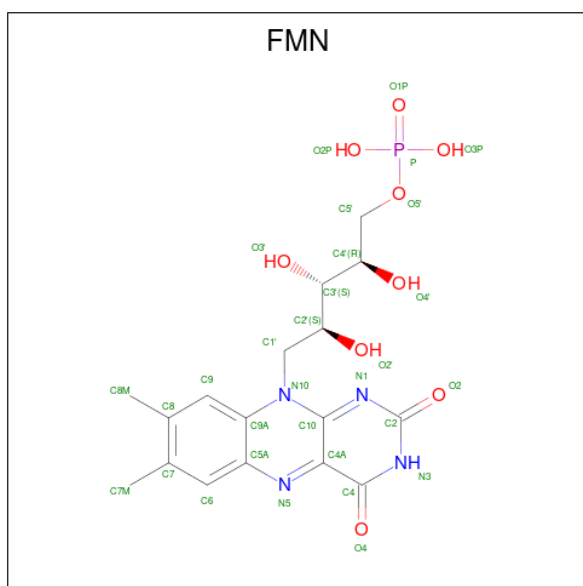
Mol	Chain	Residues	Atoms	ZeroOcc	AltConf
5	A	1	Total Na 1 1	0	0
5	B	3	Total Na 3 3	0	0
5	C	2	Total Na 2 2	0	0
5	D	5	Total Na 5 5	0	0

- Molecule 6 is IRON/SULFUR CLUSTER (three-letter code: SF4) (formula: Fe<sub>4</sub>S<sub>4</sub>) (labeled as "Ligand of Interest" by depositor).



Mol	Chain	Residues	Atoms				ZeroOcc	AltConf
6	B	1	Total	Fe	S			
			8	4	4	0	0	
6	D	1	Total	Fe	S			
			8	4	4	0	0	

- Molecule 7 is FLAVIN MONONUCLEOTIDE (three-letter code: FMN) (formula:  $C_{17}H_{21}N_4O_9P$ ) (labeled as "Ligand of Interest" by depositor).



Mol	Chain	Residues	Atoms				ZeroOcc	AltConf	
7	B	1	Total	C	N	O	P		
			31	17	4	9	1	0	0

*Continued on next page...*

Continued from previous page...

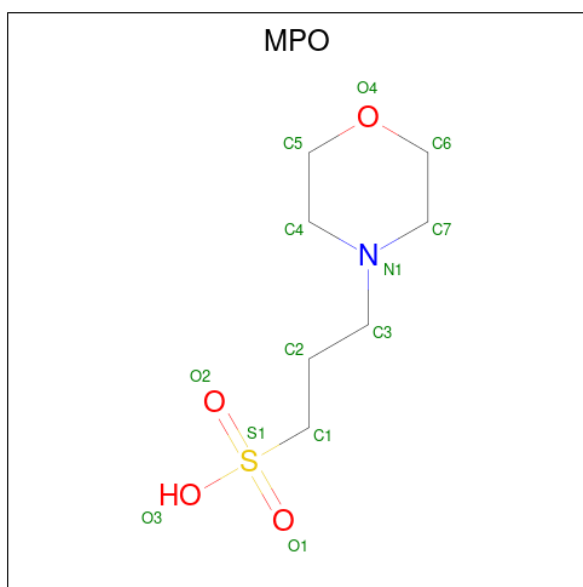
Mol	Chain	Residues	Atoms					ZeroOcc	AltConf
			Total	C	N	O	P		
7	D	1	31	17	4	9	1	0	0

- Molecule 8 is GLYCEROL (three-letter code: GOL) (formula:  $C_3H_8O_3$ ).



Mol	Chain	Residues	Atoms			ZeroOcc	AltConf
			Total	C	O		
8	B	1	6	3	3	0	0
8	D	1	6	3	3	0	0

- Molecule 9 is 3[N-MORPHOLINO]PROPANE SULFONIC ACID (three-letter code: MPO) (formula:  $C_7H_{15}NO_4S$ ).



Mol	Chain	Residues	Atoms					ZeroOcc	AltConf
9	B	1	Total	C	N	O	S	0	0
			13	7	1	4	1		
9	B	1	Total	C	N	O	S	0	0
			8	3	1	3	1		
9	D	1	Total	C	N	O	S	0	0
			8	3	1	3	1		

- Molecule 10 is CHLORIDE ION (three-letter code: CL) (formula: Cl).

Mol	Chain	Residues	Atoms		ZeroOcc	AltConf
10	B	1	Total	Cl	0	0
			1	1		
10	C	1	Total	Cl	0	0
			1	1		
10	D	1	Total	Cl	0	0
			1	1		

- Molecule 11 is water.

Mol	Chain	Residues	Atoms		ZeroOcc	AltConf
11	A	116	Total	O	0	0
			116	116		
11	B	250	Total	O	0	0
			250	250		
11	C	86	Total	O	0	0
			86	86		

*Continued on next page...*



*Continued from previous page...*

<b>Mol</b>	<b>Chain</b>	<b>Residues</b>	<b>Atoms</b>		<b>ZeroOcc</b>	<b>AltConf</b>
11	D	274	Total	O	0	1
			275	275		



## 4 Data and refinement statistics

Property	Value	Source
Space group	P 21 21 21	Depositor
Cell constants a, b, c, $\alpha$ , $\beta$ , $\gamma$	63.28Å 116.13Å 189.84Å 90.00° 90.00° 90.00°	Depositor
Resolution (Å)	48.00 – 2.28 47.96 – 2.28	Depositor EDS
% Data completeness (in resolution range)	97.3 (48.00-2.28) 97.3 (47.96-2.28)	Depositor EDS
$R_{merge}$	(Not available)	Depositor
$R_{sym}$	(Not available)	Depositor
$\langle I/\sigma(I) \rangle$ <sup>1</sup>	2.23 (at 2.29Å)	Xtrriage
Refinement program	REFMAC 5.8.0425	Depositor
R, $R_{free}$	0.198 , 0.244 0.205 , 0.251	Depositor DCC
$R_{free}$ test set	3160 reflections (5.02%)	wwPDB-VP
Wilson B-factor (Å <sup>2</sup> )	19.7	Xtrriage
Anisotropy	0.398	Xtrriage
Bulk solvent $k_{sol}$ (e/Å <sup>3</sup> ), $B_{sol}$ (Å <sup>2</sup> )	0.34 , 42.0	EDS
L-test for twinning <sup>2</sup>	$\langle  L  \rangle = 0.51$ , $\langle L^2 \rangle = 0.34$	Xtrriage
Estimated twinning fraction	No twinning to report.	Xtrriage
$F_o, F_c$ correlation	0.94	EDS
Total number of atoms	9995	wwPDB-VP
Average B, all atoms (Å <sup>2</sup> )	25.0	wwPDB-VP

Xtrriage's analysis on translational NCS is as follows: *The analyses of the Patterson function reveals a significant off-origin peak that is 43.72 % of the origin peak, indicating pseudo-translational symmetry. The chance of finding a peak of this or larger height randomly in a structure without pseudo-translational symmetry is equal to 1.6941e-04. The detected translational NCS is most likely also responsible for the elevated intensity ratio.*

<sup>1</sup>Intensities estimated from amplitudes.

<sup>2</sup>Theoretical values of  $\langle |L| \rangle$ ,  $\langle L^2 \rangle$  for acentric reflections are 0.5, 0.333 respectively for untwinned datasets, and 0.375, 0.2 for perfectly twinned datasets.

## 5 Model quality [i](#)

### 5.1 Standard geometry [i](#)

Bond lengths and bond angles in the following residue types are not validated in this section: CL, FES, NA, SO4, SF4, GOL, FMN, MPO

The Z score for a bond length (or angle) is the number of standard deviations the observed value is removed from the expected value. A bond length (or angle) with  $|Z| > 5$  is considered an outlier worth inspection. RMSZ is the root-mean-square of all Z scores of the bond lengths (or angles).

Mol	Chain	Bond lengths		Bond angles	
		RMSZ	# Z  >5	RMSZ	# Z  >5
1	A	0.37	0/1297	0.74	0/1752
1	C	0.37	0/1293	0.70	0/1747
2	B	0.39	0/3367	0.73	3/4556 (0.1%)
2	D	0.39	0/3368	0.72	1/4556 (0.0%)
All	All	0.38	0/9325	0.73	4/12611 (0.0%)

Chiral center outliers are detected by calculating the chiral volume of a chiral center and verifying if the center is modelled as a planar moiety or with the opposite hand. A planarity outlier is detected by checking planarity of atoms in a peptide group, atoms in a mainchain group or atoms of a sidechain that are expected to be planar.

Mol	Chain	#Chirality outliers	#Planarity outliers
1	C	0	1
2	D	0	3
All	All	0	4

There are no bond length outliers.

All (4) bond angle outliers are listed below:

Mol	Chain	Res	Type	Atoms	Z	Observed( $^{\circ}$ )	Ideal( $^{\circ}$ )
2	B	208	GLN	N-CA-CB	-6.00	99.81	110.60
2	B	208	GLN	CB-CA-C	5.93	122.26	110.40
2	B	129	GLU	CB-CA-C	5.36	121.12	110.40
2	D	303	GLU	CB-CA-C	-5.13	100.13	110.40

There are no chirality outliers.

All (4) planarity outliers are listed below:

Mol	Chain	Res	Type	Group
1	C	82	ARG	Sidechain
2	D	239	ARG	Sidechain
2	D	64	ARG	Sidechain
2	D	87	ARG	Sidechain

## 5.2 Too-close contacts

In the following table, the Non-H and H(model) columns list the number of non-hydrogen atoms and hydrogen atoms in the chain respectively. The H(added) column lists the number of hydrogen atoms added and optimized by MolProbity. The Clashes column lists the number of clashes within the asymmetric unit, whereas Symm-Clashes lists symmetry-related clashes.

Mol	Chain	Non-H	H(model)	H(added)	Clashes	Symm-Clashes
1	A	1268	0	1269	9	0
1	C	1264	0	1265	8	0
2	B	3287	0	3253	24	0
2	D	3288	0	3262	24	0
3	A	4	0	0	0	0
3	C	4	0	0	0	0
4	A	10	0	0	0	0
4	C	10	0	0	0	0
5	A	1	0	0	0	0
5	B	3	0	0	0	0
5	C	2	0	0	0	0
5	D	5	0	0	0	0
6	B	8	0	0	0	0
6	D	8	0	0	0	0
7	B	31	0	19	0	0
7	D	31	0	19	0	0
8	B	6	0	8	1	0
8	D	6	0	8	0	0
9	B	21	0	22	4	0
9	D	8	0	7	2	0
10	B	1	0	0	0	0
10	C	1	0	0	0	0
10	D	1	0	0	0	0
11	A	116	0	0	1	0
11	B	250	0	0	2	0
11	C	86	0	0	1	0
11	D	275	0	0	7	0
All	All	9995	0	9132	61	0

The all-atom clashscore is defined as the number of clashes found per 1000 atoms (including

hydrogen atoms). The all-atom clashscore for this structure is 3.

All (61) close contacts within the same asymmetric unit are listed below, sorted by their clash magnitude.

Atom-1	Atom-2	Interatomic distance (Å)	Clash overlap (Å)
2:D:27:ARG:HH11	9:D:504:MPO:H11	1.54	0.72
2:D:375:GLN:HG2	11:D:797:HOH:O	1.89	0.72
2:B:27:ARG:HH11	9:B:505:MPO:H11	1.55	0.72
2:B:27:ARG:HH11	9:B:505:MPO:C1	2.05	0.68
1:C:133:GLU:HG3	2:D:8:PRO:HB2	1.80	0.64
2:D:229:PHE:O	2:D:233:MET:HG2	1.97	0.64
2:D:362:ASN:ND2	11:D:602:HOH:O	2.31	0.62
2:D:384:ASN:HD22	2:D:404:ARG:HH21	1.47	0.62
2:D:27:ARG:HH11	9:D:504:MPO:C1	2.16	0.57
2:B:226:ASN:ND2	2:B:238:TYR:OH	2.38	0.56
2:D:347:CYS:SG	2:D:349:GLN:HG2	2.45	0.56
2:B:384:ASN:HD22	2:B:404:ARG:HH21	1.53	0.56
2:B:52:GLU:HG2	11:B:847:HOH:O	2.06	0.56
2:D:64:ARG:HD2	2:D:311:TYR:CD2	2.42	0.55
2:B:64:ARG:HD3	11:B:785:HOH:O	2.08	0.53
2:D:64:ARG:HG3	2:D:70:GLY:O	2.09	0.52
2:D:129:GLU:HG3	2:D:172:TYR:HE2	1.74	0.51
2:B:150:GLU:O	2:B:154:LYS:HG2	2.10	0.51
2:B:351:THR:HB	2:B:352:PRO:HD3	1.92	0.51
2:D:311:TYR:CE2	11:D:603:HOH:O	2.64	0.51
2:B:94:ASP:O	2:B:95:GLU:C	2.49	0.50
2:D:311:TYR:CZ	11:D:603:HOH:O	2.55	0.49
1:A:135:PRO:HG2	1:A:146:PHE:HB3	1.94	0.49
2:D:419:LYS:C	11:D:786:HOH:O	2.50	0.49
2:B:27:ARG:HH11	9:B:505:MPO:H12	1.78	0.48
1:A:17:GLN:HE21	1:A:21:ASN:ND2	2.13	0.47
1:C:17:GLN:HG3	11:C:384:HOH:O	2.13	0.47
1:A:100:LEU:HD22	1:A:111:PRO:HG3	1.97	0.47
2:B:388[A]:GLN:N	2:B:389:PRO:CD	2.78	0.47
2:B:388[B]:GLN:N	2:B:389:PRO:CD	2.78	0.46
1:A:78:LYS:HE2	11:A:369:HOH:O	2.16	0.45
2:D:351:THR:HB	2:D:352:PRO:HD3	1.98	0.45
2:B:252:PHE:CE1	2:B:309:MET:HB3	2.51	0.45
2:D:236:GLU:HG2	11:D:662:HOH:O	2.15	0.45
1:A:133:GLU:HG3	2:B:8:PRO:HB2	1.99	0.44
1:A:25:LYS:HD2	2:B:212:TRP:CZ2	2.53	0.44
2:D:415:GLU:HG3	2:D:419:LYS:HE3	1.99	0.44
2:B:292:VAL:CG1	2:B:322:VAL:HG13	2.48	0.43

*Continued on next page...*

Continued from previous page...

Atom-1	Atom-2	Interatomic distance (Å)	Clash overlap (Å)
2:B:294:SER:HA	2:B:321:THR:O	2.18	0.43
1:C:80:LYS:HG2	1:C:81:TYR:CE2	2.53	0.43
2:D:384:ASN:HD21	2:D:404:ARG:HB2	1.82	0.43
1:C:91:CYS:HA	1:C:134:ALA:HB1	2.00	0.43
2:B:87:ARG:HH12	8:B:503:GOL:H12	1.82	0.43
2:B:134:ILE:O	2:B:175:ARG:HA	2.20	0.42
1:C:50:LYS:O	1:C:53:ALA:HB3	2.18	0.42
2:B:27:ARG:NH1	9:B:505:MPO:H11	2.29	0.42
1:A:23:PHE:HE2	1:A:32:LEU:HD12	1.85	0.41
1:C:77:ASP:HB3	1:C:114:VAL:HG21	2.02	0.41
2:D:412:GLU:HB3	11:D:608:HOH:O	2.20	0.41
2:B:89:PHE:O	2:B:130:ALA:HA	2.20	0.41
1:C:135:PRO:HG2	1:C:146:PHE:HB3	2.02	0.41
2:D:350:CYS:SG	2:D:392:ILE:HG12	2.61	0.41
1:A:52:LEU:HG	1:A:56:LEU:HD12	2.02	0.41
2:D:89:PHE:O	2:D:130:ALA:HA	2.21	0.41
2:B:402:LEU:C	2:B:402:LEU:HD23	2.41	0.40
2:D:266:LEU:HD13	2:D:270:THR:HG21	2.03	0.40
1:C:131:CYS:SG	2:D:99:GLY:HA2	2.61	0.40
2:D:54:ILE:HG23	2:D:231:ILE:HD11	2.03	0.40
1:A:110:LYS:HB3	1:A:111:PRO:HD2	2.03	0.40
2:B:18:MET:SD	2:B:241:ILE:HD13	2.61	0.40
2:B:392:ILE:HD13	2:B:392:ILE:HG21	1.88	0.40

There are no symmetry-related clashes.

## 5.3 Torsion angles [i](#)

### 5.3.1 Protein backbone [i](#)

In the following table, the Percentiles column shows the percent Ramachandran outliers of the chain as a percentile score with respect to all X-ray entries followed by that with respect to entries of similar resolution.

The Analysed column shows the number of residues for which the backbone conformation was analysed, and the total number of residues.

Mol	Chain	Analysed	Favoured	Allowed	Outliers	Percentiles
1	A	154/160 (96%)	149 (97%)	5 (3%)	0	100 100
1	C	154/160 (96%)	150 (97%)	4 (3%)	0	100 100

Continued on next page...

Continued from previous page...

Mol	Chain	Analysed	Favoured	Allowed	Outliers	Percentiles	
2	B	416/434 (96%)	404 (97%)	11 (3%)	1 (0%)	47	57
2	D	416/434 (96%)	405 (97%)	10 (2%)	1 (0%)	47	57
All	All	1140/1188 (96%)	1108 (97%)	30 (3%)	2 (0%)	47	57

All (2) Ramachandran outliers are listed below:

Mol	Chain	Res	Type
2	B	95	GLU
2	D	95	GLU

### 5.3.2 Protein sidechains [i](#)

In the following table, the Percentiles column shows the percent sidechain outliers of the chain as a percentile score with respect to all X-ray entries followed by that with respect to entries of similar resolution.

The Analysed column shows the number of residues for which the sidechain conformation was analysed, and the total number of residues.

Mol	Chain	Analysed	Rotameric	Outliers	Percentiles	
1	A	142/146 (97%)	142 (100%)	0	100	100
1	C	141/146 (97%)	140 (99%)	1 (1%)	84	91
2	B	342/357 (96%)	341 (100%)	1 (0%)	92	96
2	D	342/357 (96%)	338 (99%)	4 (1%)	71	82
All	All	967/1006 (96%)	961 (99%)	6 (1%)	86	93

All (6) residues with a non-rotameric sidechain are listed below:

Mol	Chain	Res	Type
2	B	412	GLU
1	C	12	LEU
2	D	78	LYS
2	D	228	ARG
2	D	393	CYS
2	D	412	GLU

Sometimes sidechains can be flipped to improve hydrogen bonding and reduce clashes. All (16) such sidechains are listed below:



Mol	Chain	Res	Type
1	A	17	GLN
1	A	28	GLN
1	A	39	ASN
2	B	83	ASN
2	B	220	ASN
2	B	226	ASN
2	B	360	GLN
2	B	384	ASN
1	C	17	GLN
1	C	19	HIS
1	C	21	ASN
2	D	220	ASN
2	D	226	ASN
2	D	360	GLN
2	D	362	ASN
2	D	384	ASN

### 5.3.3 RNA [i](#)

There are no RNA molecules in this entry.

### 5.4 Non-standard residues in protein, DNA, RNA chains [i](#)

There are no non-standard protein/DNA/RNA residues in this entry.

### 5.5 Carbohydrates [i](#)

There are no monosaccharides in this entry.

### 5.6 Ligand geometry [i](#)

Of 29 ligands modelled in this entry, 14 are monoatomic - leaving 15 for Mogul analysis.

In the following table, the Counts columns list the number of bonds (or angles) for which Mogul statistics could be retrieved, the number of bonds (or angles) that are observed in the model and the number of bonds (or angles) that are defined in the Chemical Component Dictionary. The Link column lists molecule types, if any, to which the group is linked. The Z score for a bond length (or angle) is the number of standard deviations the observed value is removed from the expected value. A bond length (or angle) with  $|Z| > 2$  is considered an outlier worth inspection. RMSZ is the root-mean-square of all Z scores of the bond lengths (or angles).

Mol	Type	Chain	Res	Link	Bond lengths			Bond angles		
					Counts	RMSZ	# Z  > 2	Counts	RMSZ	# Z  > 2
4	SO4	A	203	-	4,4,4	0.32	0	6,6,6	0.10	0
4	SO4	A	202	-	4,4,4	0.35	0	6,6,6	0.10	0
8	GOL	D	503	-	5,5,5	0.21	0	5,5,5	0.54	0
6	SF4	D	501	2	0,12,12	-	-	-		
9	MPO	D	504	-	7,7,13	1.13	1 (14%)	9,9,17	0.59	0
9	MPO	B	505	-	7,7,13	1.09	1 (14%)	9,9,17	2.13	3 (33%)
4	SO4	C	202	-	4,4,4	0.27	0	6,6,6	0.12	0
6	SF4	B	501	2	0,12,12	-	-	-		
8	GOL	B	503	-	5,5,5	0.12	0	5,5,5	0.34	0
7	FMN	B	502	-	33,33,33	0.47	0	48,50,50	0.60	0
9	MPO	B	504	-	13,13,13	0.69	1 (7%)	17,17,17	0.61	0
3	FES	C	201	1	0,4,4	-	-	-		
7	FMN	D	502	-	33,33,33	0.53	0	48,50,50	0.50	0
4	SO4	C	203	-	4,4,4	0.34	0	6,6,6	0.09	0
3	FES	A	201	1	0,4,4	-	-	-		

In the following table, the Chirals column lists the number of chiral outliers, the number of chiral centers analysed, the number of these observed in the model and the number defined in the Chemical Component Dictionary. Similar counts are reported in the Torsion and Rings columns. '2' means no outliers of that kind were identified.

Mol	Type	Chain	Res	Link	Chirals	Torsions	Rings
8	GOL	D	503	-	-	2/4/4/4	-
9	MPO	D	504	-	-	0/5/5/15	-
9	MPO	B	505	-	-	0/5/5/15	-
3	FES	C	201	1	-	-	0/1/1/1
8	GOL	B	503	-	-	2/4/4/4	-
6	SF4	B	501	2	-	-	0/6/5/5
7	FMN	B	502	-	-	6/18/18/18	0/3/3/3
9	MPO	B	504	-	-	2/7/15/15	0/1/1/1
3	FES	A	201	1	-	-	0/1/1/1
7	FMN	D	502	-	-	4/18/18/18	0/3/3/3
6	SF4	D	501	2	-	-	0/6/5/5

All (3) bond length outliers are listed below:

Mol	Chain	Res	Type	Atoms	Z	Observed(Å)	Ideal(Å)
9	D	504	MPO	O3-S1	2.92	1.58	1.47
9	B	505	MPO	O3-S1	2.76	1.57	1.47
9	B	504	MPO	O3-S1	2.30	1.55	1.47

All (3) bond angle outliers are listed below:

Mol	Chain	Res	Type	Atoms	Z	Observed(°)	Ideal(°)
9	B	505	MPO	O3-S1-C1	4.74	113.44	105.77
9	B	505	MPO	O3-S1-O1	-2.81	104.42	111.27
9	B	505	MPO	O2-S1-C1	-2.66	103.72	106.92

There are no chirality outliers.

All (16) torsion outliers are listed below:

Mol	Chain	Res	Type	Atoms
8	D	503	GOL	C1-C2-C3-O3
8	D	503	GOL	O2-C2-C3-O3
7	B	502	FMN	O2'-C2'-C3'-O3'
7	B	502	FMN	O2'-C2'-C3'-C4'
7	D	502	FMN	C5'-O5'-P-O1P
7	D	502	FMN	C5'-O5'-P-O3P
7	B	502	FMN	C4'-C5'-O5'-P
8	B	503	GOL	O1-C1-C2-O2
9	B	504	MPO	C1-C2-C3-N1
7	B	502	FMN	C5'-O5'-P-O1P
7	D	502	FMN	C4'-C5'-O5'-P
9	B	504	MPO	C2-C1-S1-O1
8	B	503	GOL	O1-C1-C2-C3
7	B	502	FMN	C1'-C2'-C3'-O3'
7	B	502	FMN	C2'-C3'-C4'-O4'
7	D	502	FMN	N10-C1'-C2'-O2'

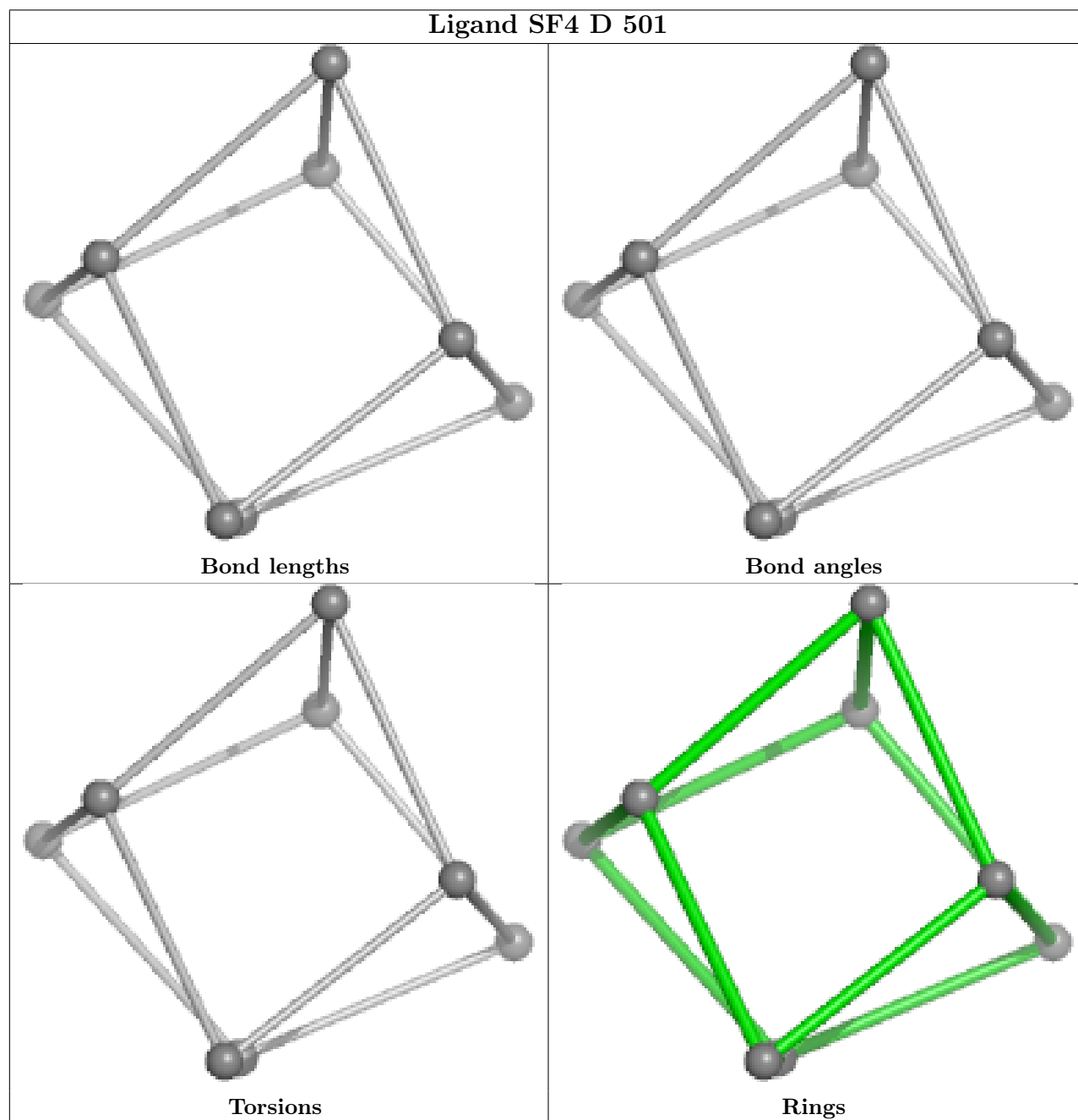
There are no ring outliers.

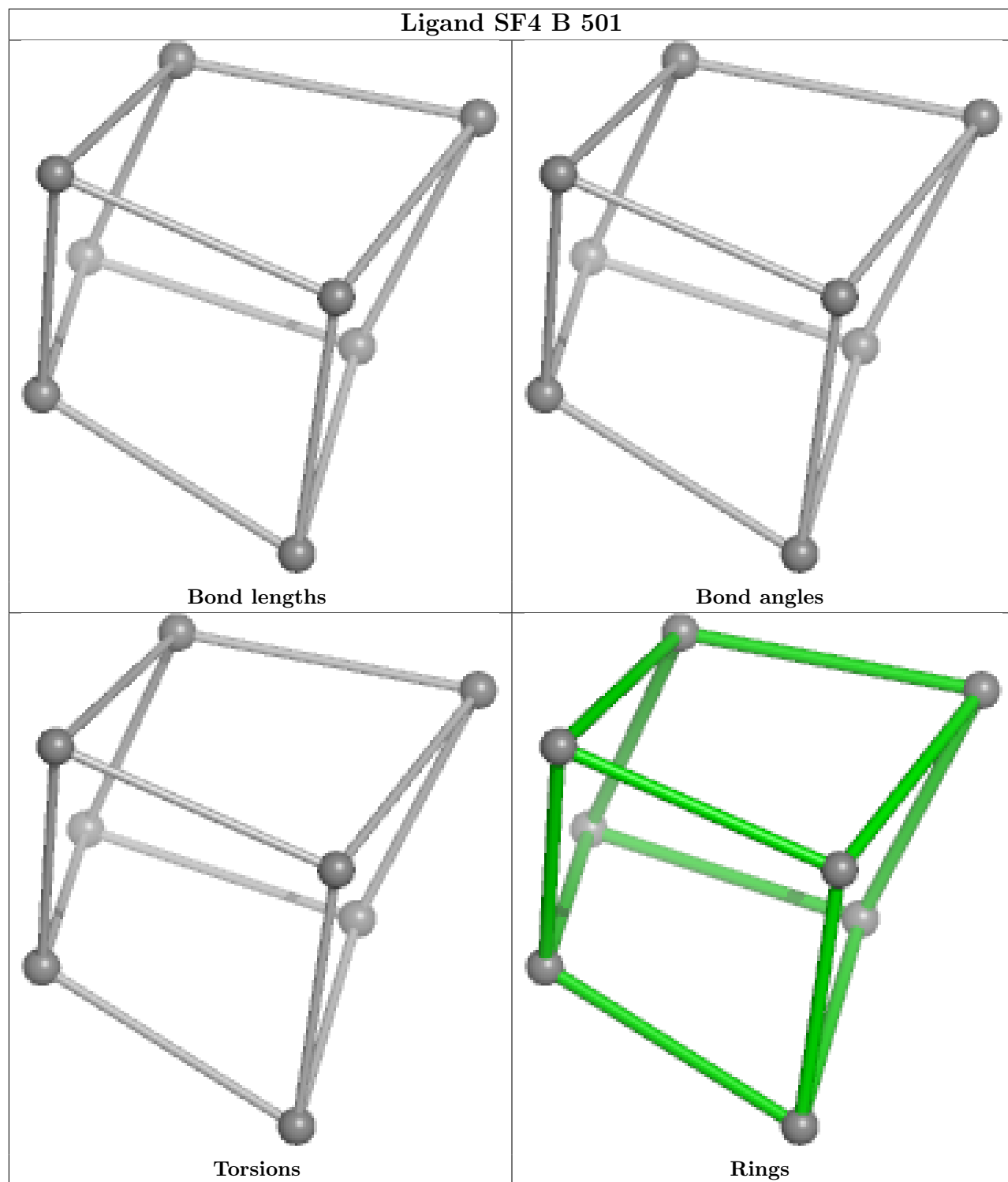
3 monomers are involved in 7 short contacts:

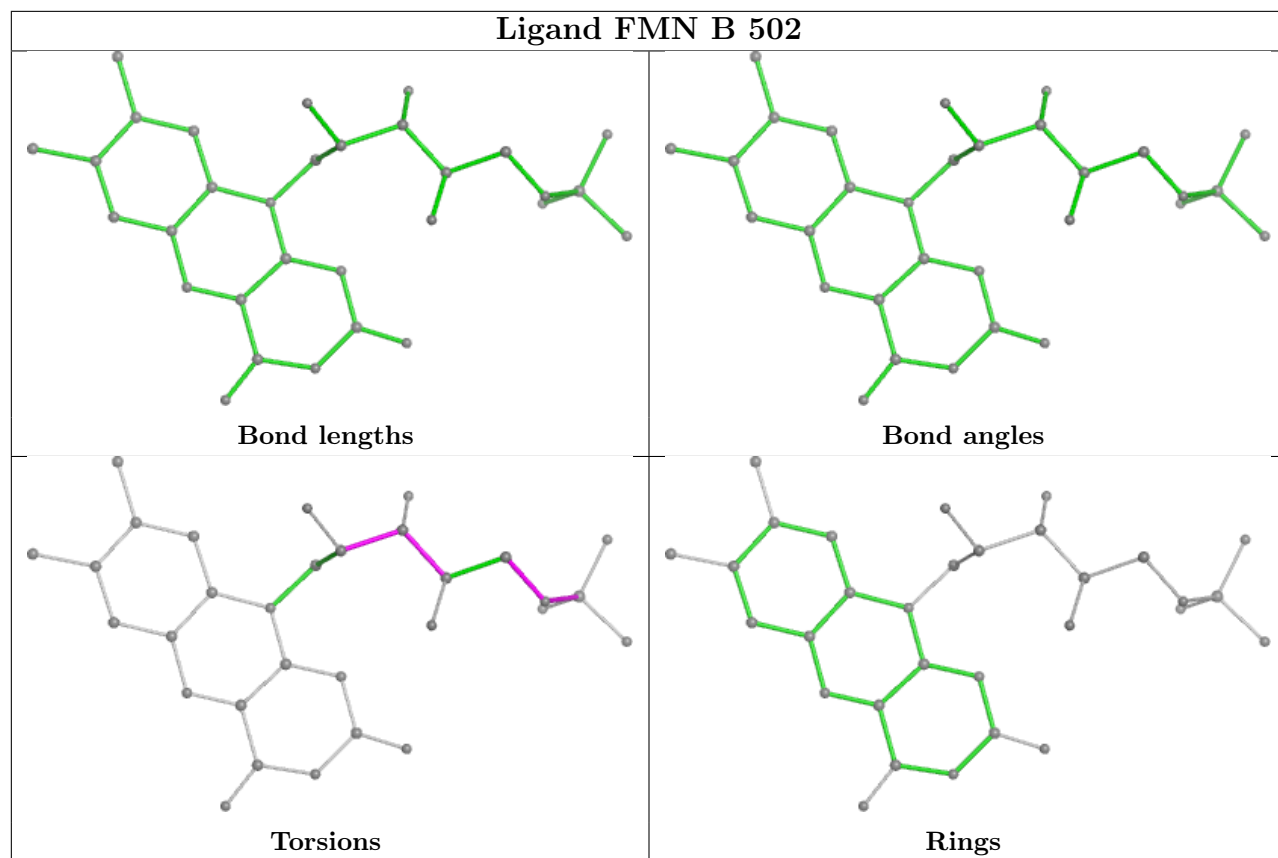
Mol	Chain	Res	Type	Clashes	Symm-Clashes
9	D	504	MPO	2	0
9	B	505	MPO	4	0
8	B	503	GOL	1	0

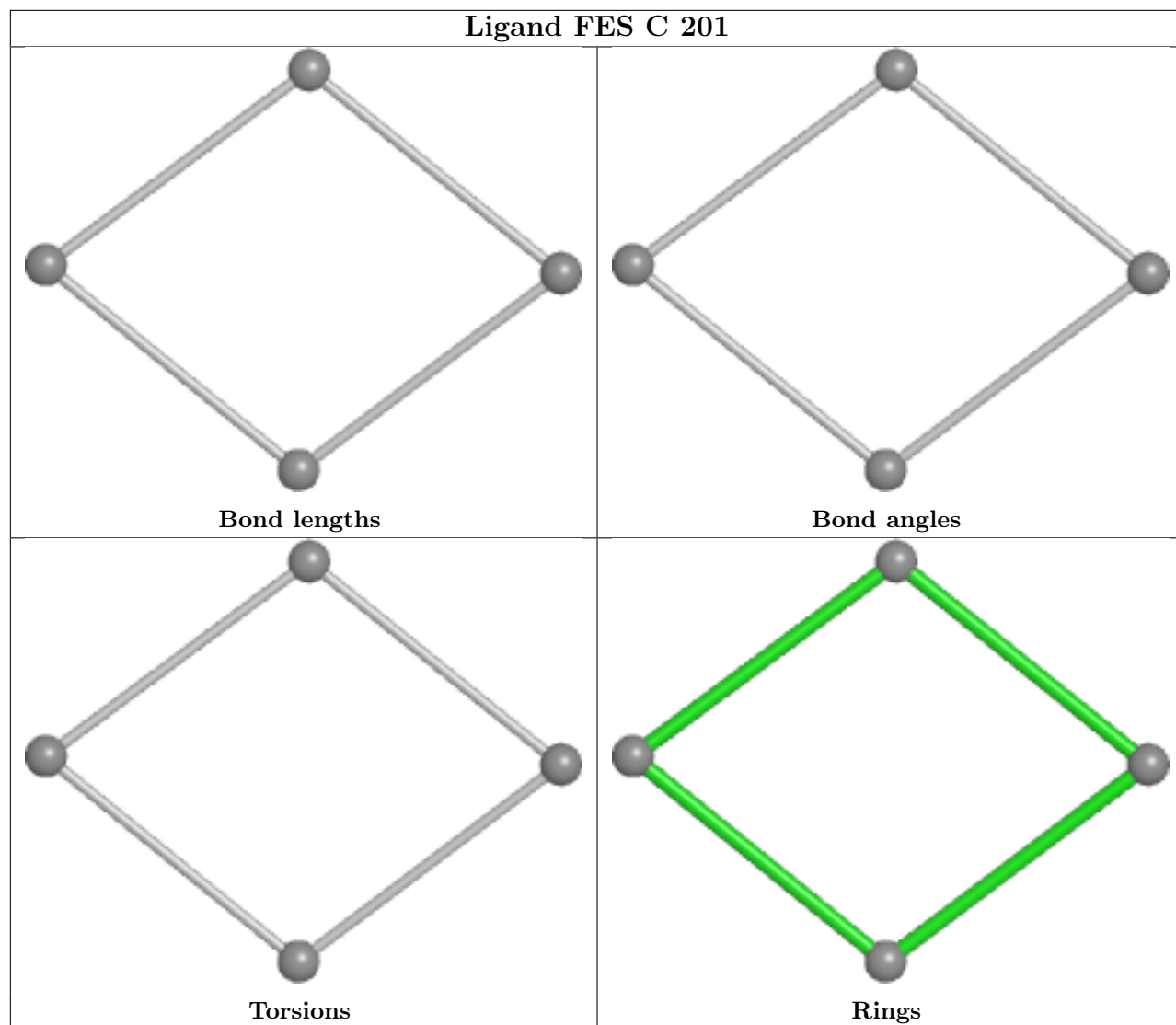
The following is a two-dimensional graphical depiction of Mogul quality analysis of bond lengths, bond angles, torsion angles, and ring geometry for all instances of the Ligand of Interest. In addition, ligands with molecular weight > 250 and outliers as shown on the validation Tables will also be included. For torsion angles, if less than 5% of the Mogul distribution of torsion angles is within 10 degrees of the torsion angle in question, then that torsion angle is considered an outlier. Any bond that is central to one or more torsion angles identified as an outlier by Mogul will be highlighted in the graph. For rings, the root-mean-square deviation (RMSD) between the ring in question and similar rings identified by Mogul is calculated over all ring torsion angles. If the

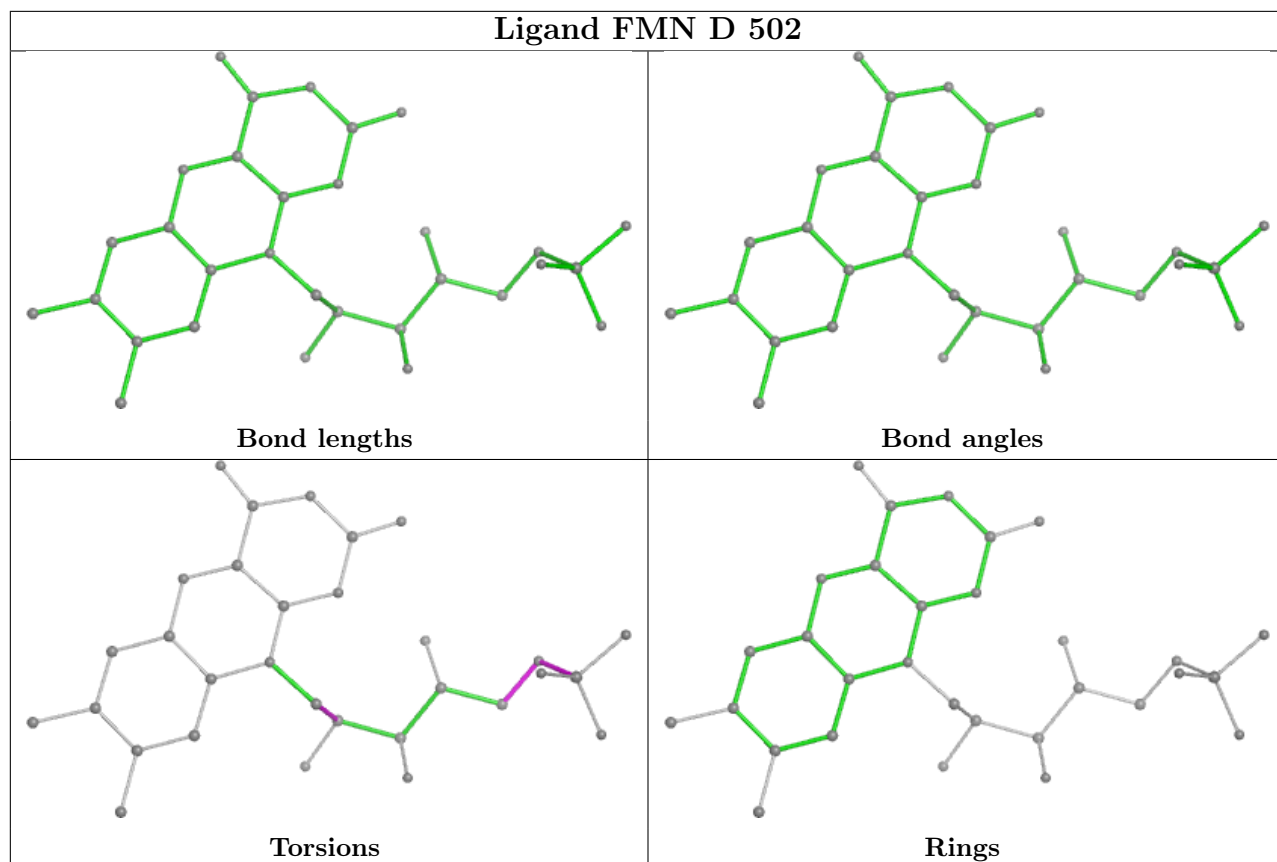
average RMSD is greater than 60 degrees and the minimal RMSD between the ring in question and any Mogul-identified rings is also greater than 60 degrees, then that ring is considered an outlier. The outliers are highlighted in purple. The color gray indicates Mogul did not find sufficient equivalents in the CSD to analyse the geometry.



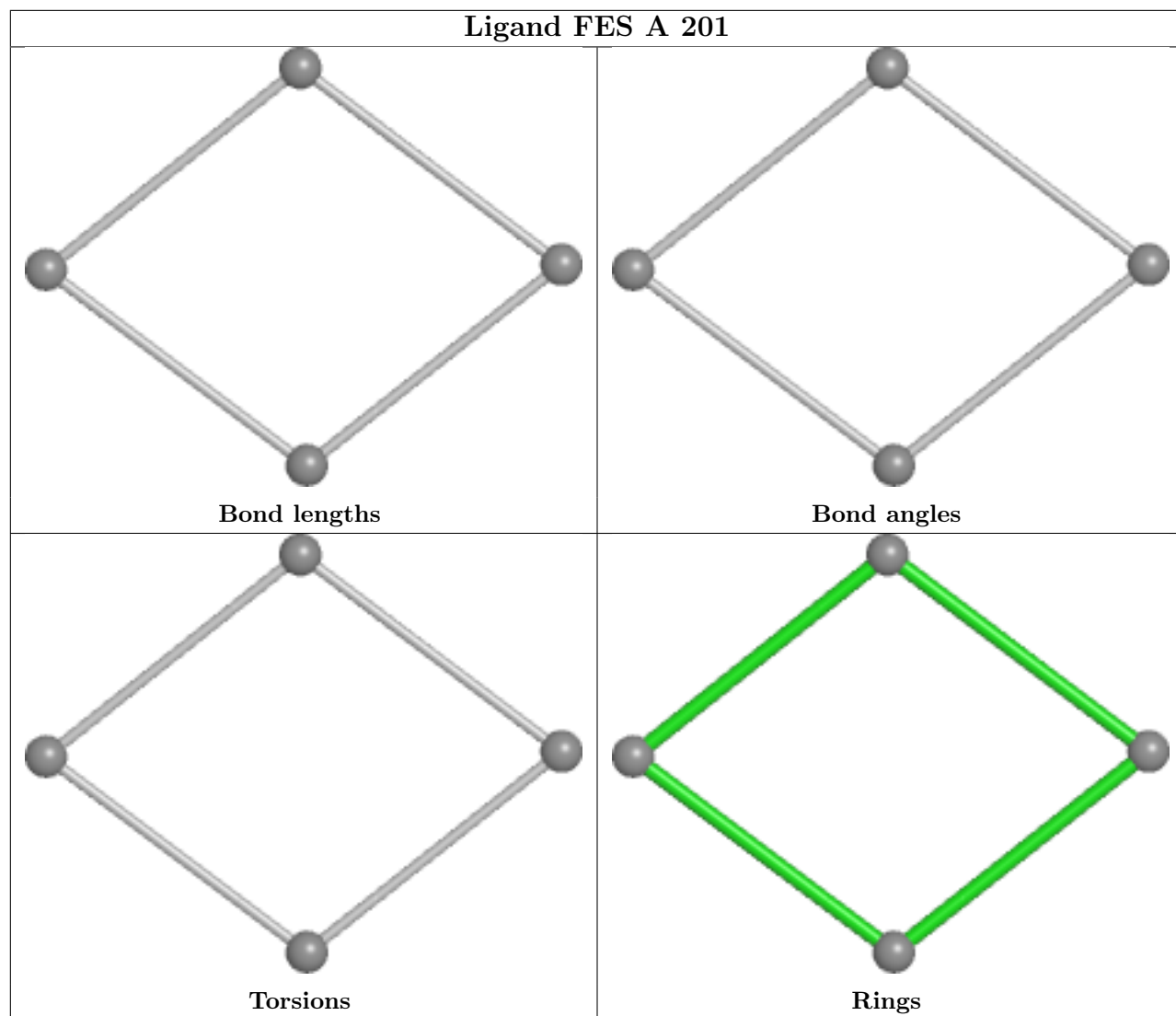












## 5.7 Other polymers [i](#)

There are no such residues in this entry.

## 5.8 Polymer linkage issues [i](#)

There are no chain breaks in this entry.

## 6 Fit of model and data [i](#)

### 6.1 Protein, DNA and RNA chains [i](#)

In the following table, the column labelled ‘#RSRZ> 2’ contains the number (and percentage) of RSRZ outliers, followed by percent RSRZ outliers for the chain as percentile scores relative to all X-ray entries and entries of similar resolution. The OWAB column contains the minimum, median, 95<sup>th</sup> percentile and maximum values of the occupancy-weighted average B-factor per residue. The column labelled ‘Q< 0.9’ lists the number of (and percentage) of residues with an average occupancy less than 0.9.

Mol	Chain	Analysed	<RSRZ>	#RSRZ>2	OWAB(Å <sup>2</sup> )	Q<0.9
1	A	156/160 (97%)	-0.17	1 (0%) 89 91	14, 27, 44, 63	0
1	C	156/160 (97%)	0.02	3 (1%) 66 72	16, 31, 50, 69	0
2	B	417/434 (96%)	-0.44	1 (0%) 95 96	13, 21, 35, 51	0
2	D	417/434 (96%)	-0.38	1 (0%) 95 96	13, 22, 37, 65	0
All	All	1146/1188 (96%)	-0.32	6 (0%) 91 93	13, 23, 41, 69	0

All (6) RSRZ outliers are listed below:

Mol	Chain	Res	Type	RSRZ
1	C	6	PHE	3.1
2	B	240	TYR	2.8
1	C	40	TYR	2.5
1	A	6	PHE	2.4
1	C	10	GLU	2.3
2	D	246	TYR	2.1

### 6.2 Non-standard residues in protein, DNA, RNA chains [i](#)

There are no non-standard protein/DNA/RNA residues in this entry.

### 6.3 Carbohydrates [i](#)

There are no monosaccharides in this entry.

### 6.4 Ligands [i](#)

In the following table, the Atoms column lists the number of modelled atoms in the group and the number defined in the chemical component dictionary. The B-factors column lists the minimum,

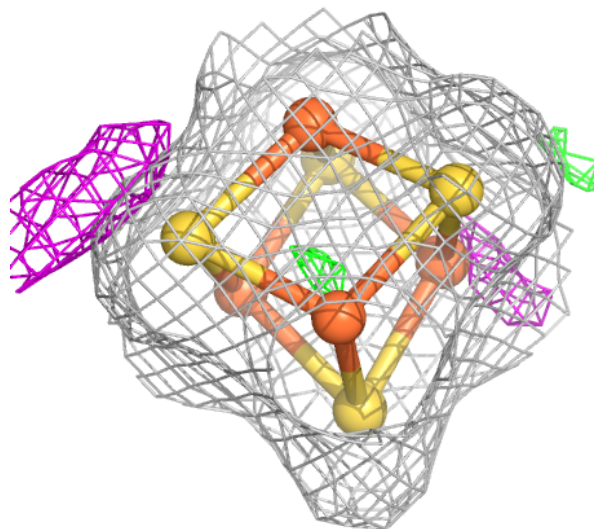
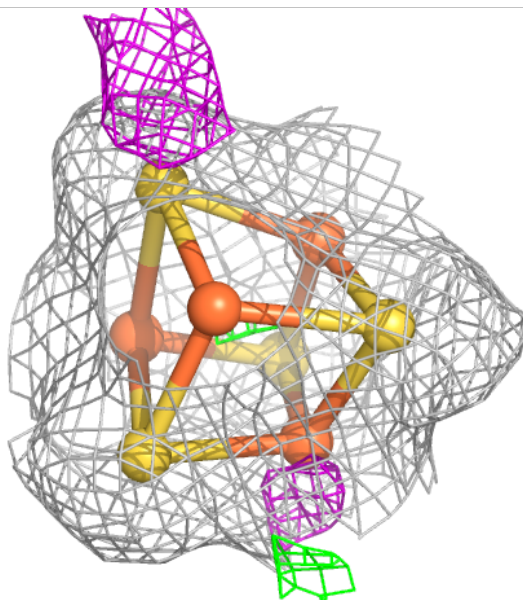
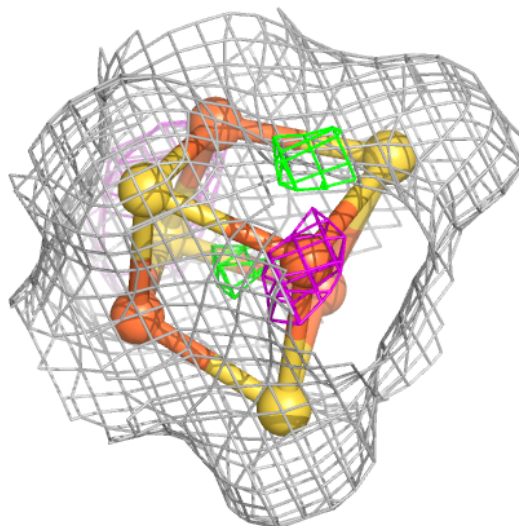
median, 95<sup>th</sup> percentile and maximum values of B factors of atoms in the group. The column labelled 'Q< 0.9' lists the number of atoms with occupancy less than 0.9.

Mol	Type	Chain	Res	Atoms	RSCC	RSR	B-factors(Å <sup>2</sup> )	Q<0.9
5	NA	B	508	1/1	0.78	0.35	51,51,51,51	0
8	GOL	D	503	6/6	0.80	0.20	38,42,47,49	0
5	NA	D	509	1/1	0.83	0.20	44,44,44,44	0
9	MPO	D	504	8/13	0.85	0.22	43,52,58,65	0
10	CL	C	204	1/1	0.88	0.16	56,56,56,56	0
8	GOL	B	503	6/6	0.89	0.11	45,46,46,47	0
5	NA	C	205	1/1	0.90	0.34	36,36,36,36	0
5	NA	D	510	1/1	0.93	0.39	46,46,46,46	0
10	CL	B	506	1/1	0.93	0.06	45,45,45,45	0
9	MPO	B	504	13/13	0.93	0.15	32,48,61,64	0
5	NA	D	508	1/1	0.94	0.13	41,41,41,41	0
5	NA	B	509	1/1	0.94	0.13	46,46,46,46	0
4	SO4	A	202	5/5	0.94	0.21	61,61,63,65	0
5	NA	D	507	1/1	0.95	0.10	42,42,42,42	0
4	SO4	C	202	5/5	0.95	0.20	52,53,56,61	0
9	MPO	B	505	8/13	0.96	0.13	33,38,39,45	0
4	SO4	A	203	5/5	0.96	0.10	44,46,50,60	0
10	CL	D	505	1/1	0.96	0.08	33,33,33,33	0
4	SO4	C	203	5/5	0.97	0.13	49,52,57,61	0
5	NA	D	506	1/1	0.97	0.06	24,24,24,24	0
5	NA	B	507	1/1	0.98	0.06	25,25,25,25	0
5	NA	A	204	1/1	0.98	0.09	25,25,25,25	0
6	SF4	B	501	8/8	0.98	0.07	14,15,16,17	0
6	SF4	D	501	8/8	0.98	0.07	14,15,16,17	0
7	FMN	B	502	31/31	0.98	0.10	11,19,21,22	0
7	FMN	D	502	31/31	0.98	0.09	13,18,19,19	0
5	NA	C	206	1/1	0.98	0.11	21,21,21,21	0
3	FES	C	201	4/4	0.99	0.07	11,11,12,14	0
3	FES	A	201	4/4	0.99	0.07	12,12,13,15	0

The following is a graphical depiction of the model fit to experimental electron density of all instances of the Ligand of Interest. In addition, ligands with molecular weight > 250 and outliers as shown on the geometry validation Tables will also be included. Each fit is shown from different orientation to approximate a three-dimensional view.

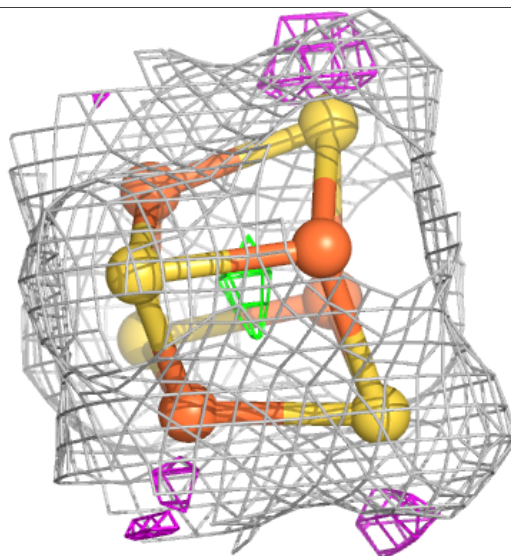
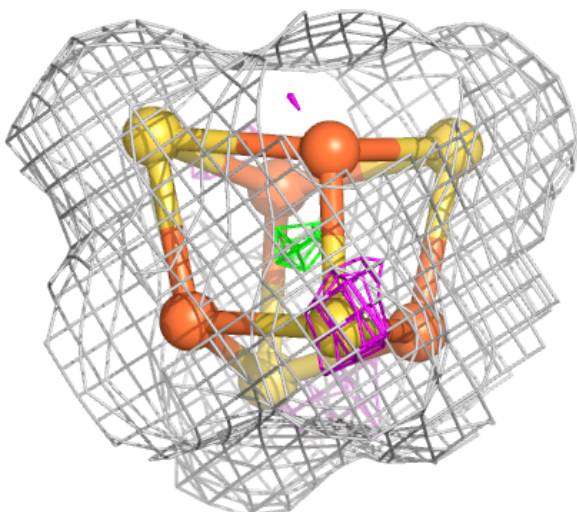
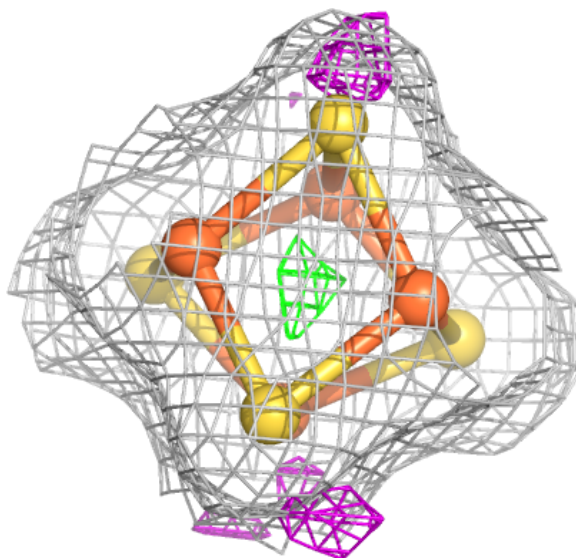
**Electron density around SF4 B 501:**

$2mF_o-DF_c$  (at 0.7 rmsd) in gray  
 $mF_o-DF_c$  (at 3 rmsd) in purple (negative)  
and green (positive)



**Electron density around SF4 D 501:**

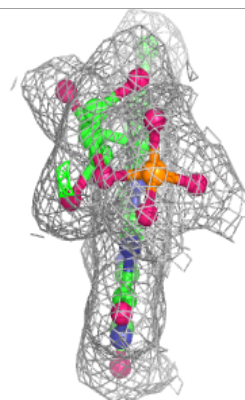
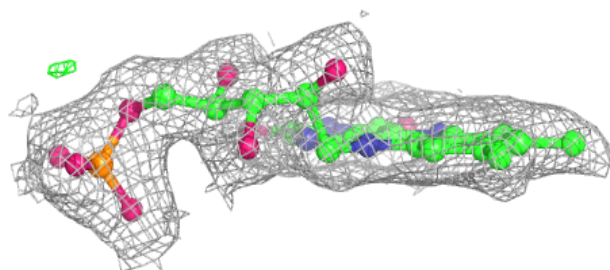
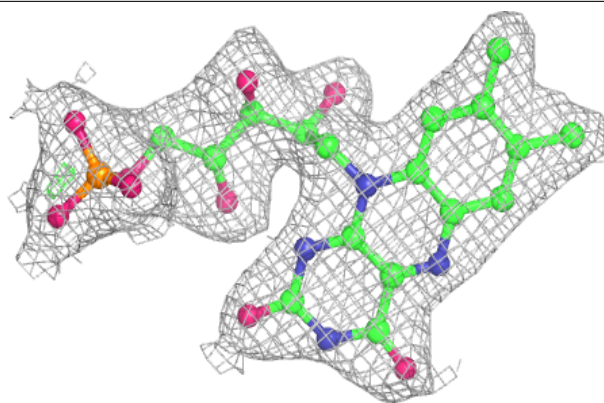
$2mF_o-DF_c$  (at 0.7 rmsd) in gray  
 $mF_o-DF_c$  (at 3 rmsd) in purple (negative)  
and green (positive)



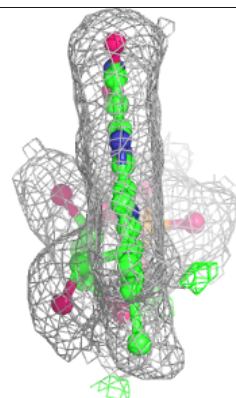
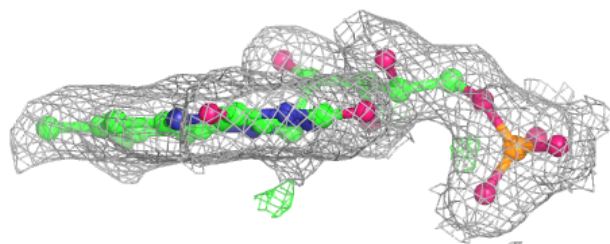
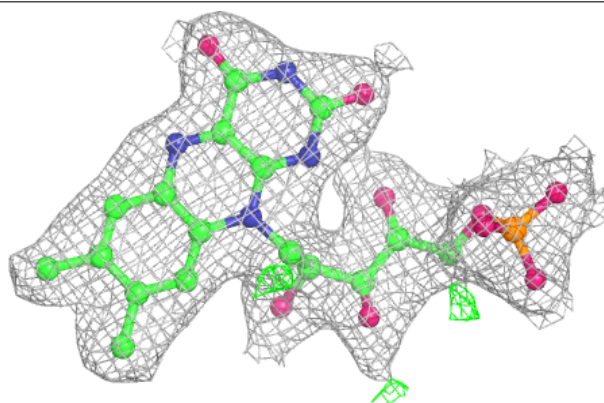


**Electron density around FMN B 502:**

$2mF_o-DF_c$  (at 0.7 rmsd) in gray  
 $mF_o-DF_c$  (at 3 rmsd) in purple (negative)  
and green (positive)

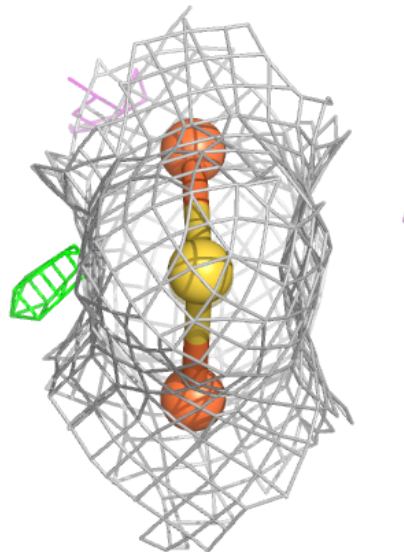
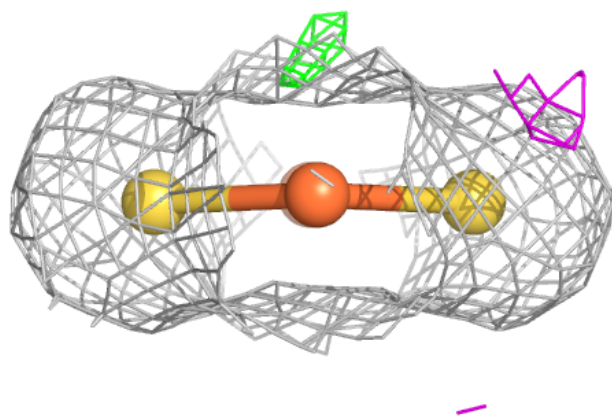
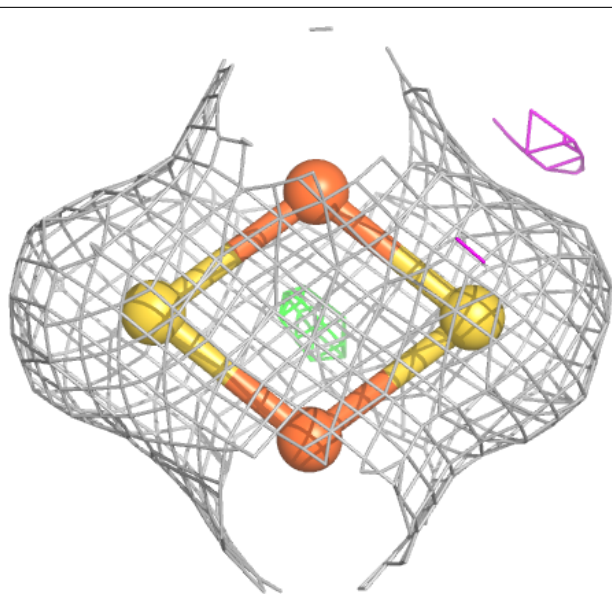
**Electron density around FMN D 502:**

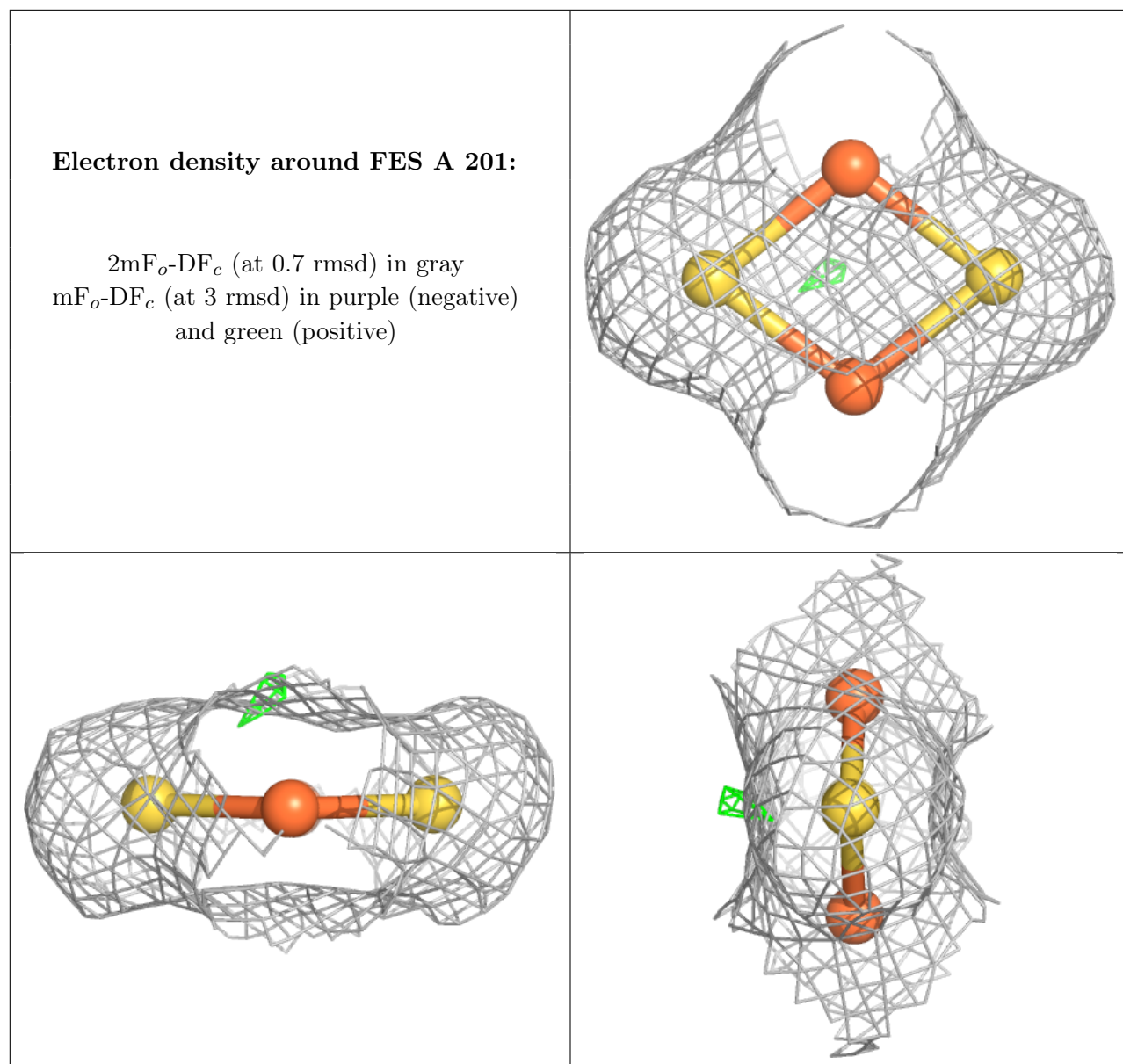
$2mF_o-DF_c$  (at 0.7 rmsd) in gray  
 $mF_o-DF_c$  (at 3 rmsd) in purple (negative)  
and green (positive)



**Electron density around FES C 201:**

$2mF_o-DF_c$  (at 0.7 rmsd) in gray  
 $mF_o-DF_c$  (at 3 rmsd) in purple (negative)  
and green (positive)





## 6.5 Other polymers [i](#)

There are no such residues in this entry.