



# Full wwPDB X-ray Structure Validation Report ⓘ

Mar 8, 2018 – 11:57 pm GMT

PDB ID : 2FFA  
Title : Crystal structure of ABC-ATPase H662A of the ABC-transporter HlyB in complex with ADP  
Authors : Zaitseva, J.; Oswald, C.; Jumpertz, T.; Jenewein, S.; Holland, I.B.; Schmitt, L.  
Deposited on : 2005-12-19  
Resolution : 1.70 Å(reported)

This is a Full wwPDB X-ray Structure Validation Report for a publicly released PDB entry.

We welcome your comments at [validation@mail.wwpdb.org](mailto:validation@mail.wwpdb.org)

A user guide is available at

<https://www.wwpdb.org/validation/2017/XrayValidationReportHelp>

with specific help available everywhere you see the ⓘ symbol.

---

The following versions of software and data (see [references ⓘ](#)) were used in the production of this report:

MolProbity : 4.02b-467  
Mogul : 1.7.3 (157068), CSD as539be (2018)  
Xtriage (Phenix) : 1.13  
EDS : trunk30967  
Percentile statistics : 20171227.v01 (using entries in the PDB archive December 27th 2017)  
Refmac : 5.8.0158  
CCP4 : 7.0 (Gargrove)  
Ideal geometry (proteins) : Engh & Huber (2001)  
Ideal geometry (DNA, RNA) : Parkinson et al. (1996)  
Validation Pipeline (wwPDB-VP) : trunk30967

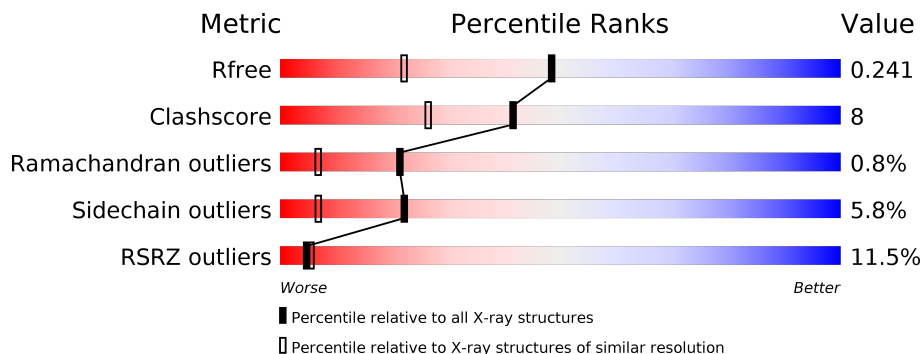
# 1 Overall quality at a glance

The following experimental techniques were used to determine the structure:

*X-RAY DIFFRACTION*

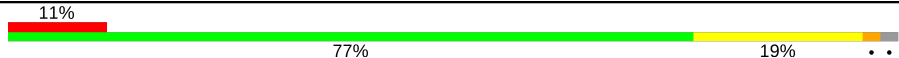
The reported resolution of this entry is 1.70 Å.

Percentile scores (ranging between 0-100) for global validation metrics of the entry are shown in the following graphic. The table shows the number of entries on which the scores are based.



Metric	Whole archive (#Entries)	Similar resolution (#Entries, resolution range(Å))
$R_{free}$	111664	3793 (1.70-1.70)
Clashscore	122126	4167 (1.70-1.70)
Ramachandran outliers	120053	4100 (1.70-1.70)
Sidechain outliers	120020	4100 (1.70-1.70)
RSRZ outliers	108989	3718 (1.70-1.70)

The table below summarises the geometric issues observed across the polymeric chains and their fit to the electron density. The red, orange, yellow and green segments on the lower bar indicate the fraction of residues that contain outliers for  $\geq 3$ , 2, 1 and 0 types of geometric quality criteria. A grey segment represents the fraction of residues that are not modelled. The numeric value for each fraction is indicated below the corresponding segment, with a dot representing fractions  $\leq 5\%$ . The upper red bar (where present) indicates the fraction of residues that have poor fit to the electron density. The numeric value is given above the bar.

Mol	Chain	Length	Quality of chain
1	A	247	

## 2 Entry composition i

There are 4 unique types of molecules in this entry. The entry contains 2185 atoms, of which 0 are hydrogens and 0 are deuteriums.

In the tables below, the ZeroOcc column contains the number of atoms modelled with zero occupancy, the AltConf column contains the number of residues with at least one atom in alternate conformation and the Trace column contains the number of residues modelled with at most 2 atoms.

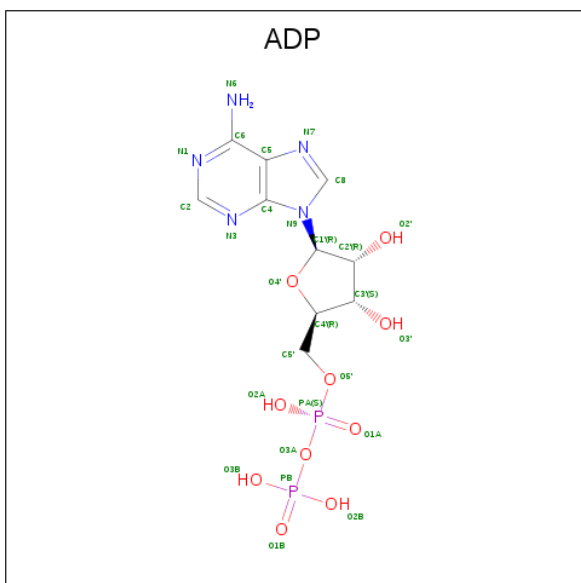
- Molecule 1 is a protein called Alpha-hemolysin translocation ATP-binding protein hlyB.

Mol	Chain	Residues	Atoms					ZeroOcc	AltConf	Trace
			Total	C	N	O	S			
1	A	243	1907	1203	345	354	5	0	0	0

There are 7 discrepancies between the modelled and reference sequences:

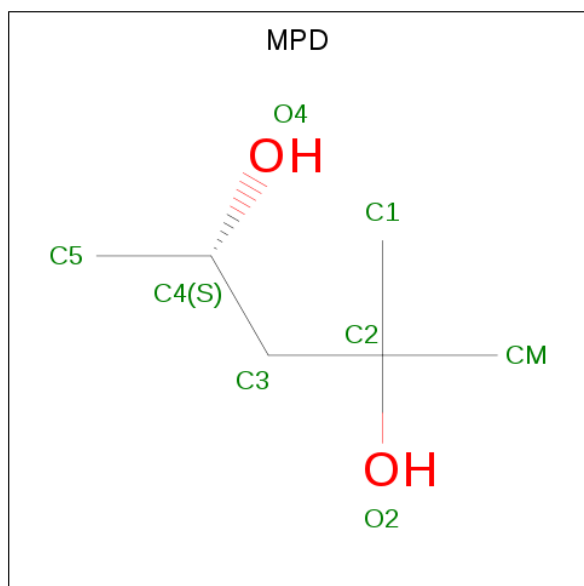
Chain	Residue	Modelled	Actual	Comment	Reference
A	461	HIS	-	EXPRESSION TAG	UNP P08716
A	462	HIS	-	EXPRESSION TAG	UNP P08716
A	463	HIS	-	EXPRESSION TAG	UNP P08716
A	464	HIS	-	EXPRESSION TAG	UNP P08716
A	465	HIS	-	EXPRESSION TAG	UNP P08716
A	466	HIS	-	EXPRESSION TAG	UNP P08716
A	662	ALA	HIS	ENGINEERED	UNP P08716

- Molecule 2 is ADENOSINE-5'-DIPHOSPHATE (three-letter code: ADP) (formula:  $C_{10}H_{15}N_5O_{10}P_2$ ).



Mol	Chain	Residues	Atoms					ZeroOcc	AltConf
			Total	C	N	O	P		
2	A	1	27	10	5	10	2	0	0

- Molecule 3 is (4S)-2-METHYL-2,4-PENTANEDIOL (three-letter code: MPD) (formula: C<sub>6</sub>H<sub>14</sub>O<sub>2</sub>).



Mol	Chain	Residues	Atoms			ZeroOcc	AltConf
			Total	C	O		
3	A	1	8	6	2	0	0

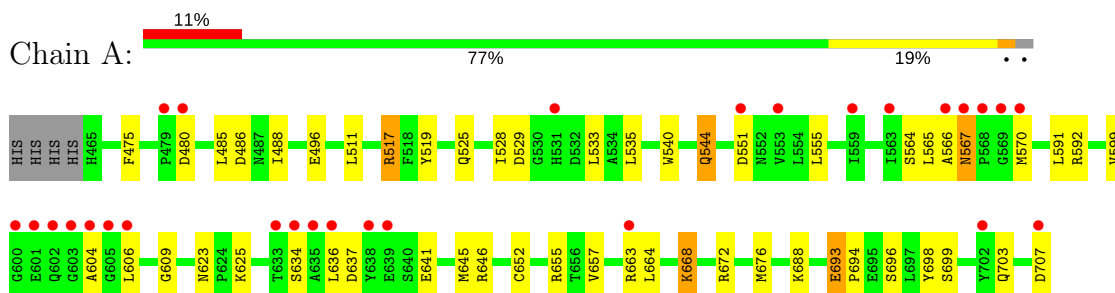
- Molecule 4 is water.

Mol	Chain	Residues	Atoms		ZeroOcc	AltConf
			Total	O		
4	A	243	243	243	0	0

### 3 Residue-property plots [i](#)

These plots are drawn for all protein, RNA and DNA chains in the entry. The first graphic for a chain summarises the proportions of the various outlier classes displayed in the second graphic. The second graphic shows the sequence view annotated by issues in geometry and electron density. Residues are color-coded according to the number of geometric quality criteria for which they contain at least one outlier: green = 0, yellow = 1, orange = 2 and red = 3 or more. A red dot above a residue indicates a poor fit to the electron density ( $RSRZ > 2$ ). Stretches of 2 or more consecutive residues without any outlier are shown as a green connector. Residues present in the sample, but not in the model, are shown in grey.

- Molecule 1: Alpha-hemolysin translocation ATP-binding protein hlyB



## 4 Data and refinement statistics

Property	Value	Source
Space group	C 1 2 1	Depositor
Cell constants a, b, c, $\alpha$ , $\beta$ , $\gamma$	180.16Å 34.77Å 38.10Å 90.00° 98.58° 90.00°	Depositor
Resolution (Å)	20.00 – 1.70 16.69 – 1.70	Depositor EDS
% Data completeness (in resolution range)	99.2 (20.00-1.70) 99.3 (16.69-1.70)	Depositor EDS
$R_{merge}$	(Not available)	Depositor
$R_{sym}$	0.06	Depositor
$\langle I/\sigma(I) \rangle$ <sup>1</sup>	6.71 (at 1.70Å)	Xtrriage
Refinement program	REFMAC 5.1.24	Depositor
R, $R_{free}$	0.205 , 0.240 0.207 , 0.241	Depositor DCC
$R_{free}$ test set	1276 reflections (4.93%)	wwPDB-VP
Wilson B-factor (Å <sup>2</sup> )	23.6	Xtrriage
Anisotropy	0.139	Xtrriage
Bulk solvent $k_{sol}$ (e/Å <sup>3</sup> ), $B_{sol}$ (Å <sup>2</sup> )	0.35 , 45.5	EDS
L-test for twinning <sup>2</sup>	$\langle  L  \rangle = 0.50$ , $\langle L^2 \rangle = 0.33$	Xtrriage
Estimated twinning fraction	No twinning to report.	Xtrriage
$F_o, F_c$ correlation	0.95	EDS
Total number of atoms	2185	wwPDB-VP
Average B, all atoms (Å <sup>2</sup> )	25.0	wwPDB-VP

Xtrriage's analysis on translational NCS is as follows: *The largest off-origin peak in the Patterson function is 8.03% of the height of the origin peak. No significant pseudotranslation is detected.*

<sup>1</sup>Intensities estimated from amplitudes.

<sup>2</sup>Theoretical values of  $\langle |L| \rangle$ ,  $\langle L^2 \rangle$  for acentric reflections are 0.5, 0.333 respectively for untwinned datasets, and 0.375, 0.2 for perfectly twinned datasets.

## 5 Model quality [i](#)

### 5.1 Standard geometry [i](#)

Bond lengths and bond angles in the following residue types are not validated in this section: MPD, ADP

The Z score for a bond length (or angle) is the number of standard deviations the observed value is removed from the expected value. A bond length (or angle) with  $|Z| > 5$  is considered an outlier worth inspection. RMSZ is the root-mean-square of all Z scores of the bond lengths (or angles).

Mol	Chain	Bond lengths		Bond angles	
		RMSZ	# Z  >5	RMSZ	# Z  >5
1	A	0.66	1/1935 (0.1%)	0.88	6/2611 (0.2%)

All (1) bond length outliers are listed below:

Mol	Chain	Res	Type	Atoms	Z	Observed(Å)	Ideal(Å)
1	A	693	GLU	CD-OE1	5.60	1.31	1.25

All (6) bond angle outliers are listed below:

Mol	Chain	Res	Type	Atoms	Z	Observed(°)	Ideal(°)
1	A	486	ASP	CB-CG-OD2	6.95	124.55	118.30
1	A	480	ASP	CB-CG-OD2	5.63	123.37	118.30
1	A	637	ASP	CB-CG-OD2	5.44	123.20	118.30
1	A	517	ARG	NE-CZ-NH1	5.43	123.02	120.30
1	A	551	ASP	CB-CG-OD2	5.37	123.14	118.30
1	A	707	ASP	CB-CG-OD2	5.10	122.89	118.30

There are no chirality outliers.

There are no planarity outliers.

### 5.2 Too-close contacts [i](#)

In the following table, the Non-H and H(model) columns list the number of non-hydrogen atoms and hydrogen atoms in the chain respectively. The H(added) column lists the number of hydrogen atoms added and optimized by MolProbity. The Clashes column lists the number of clashes within the asymmetric unit, whereas Symm-Clashes lists symmetry related clashes.

Mol	Chain	Non-H	H(model)	H(added)	Clashes	Symm-Clashes
1	A	1907	0	1959	30	0

*Continued on next page...*

*Continued from previous page...*

Mol	Chain	Non-H	H(model)	H(added)	Clashes	Symm-Clashes
2	A	27	0	12	0	0
3	A	8	0	14	0	0
4	A	243	0	0	3	0
All	All	2185	0	1985	30	0

The all-atom clashscore is defined as the number of clashes found per 1000 atoms (including hydrogen atoms). The all-atom clashscore for this structure is 8.

All (30) close contacts within the same asymmetric unit are listed below, sorted by their clash magnitude.

Atom-1	Atom-2	Interatomic distance (Å)	Clash overlap (Å)
1:A:623:ASN:HD22	1:A:655:ARG:HH12	1.26	0.79
1:A:544:GLN:N	1:A:544:GLN:HE21	1.89	0.69
1:A:496:GLU:OE1	1:A:672:ARG:HD3	1.93	0.68
1:A:623:ASN:ND2	1:A:655:ARG:HH12	1.94	0.66
1:A:664:LEU:HD13	1:A:698:TYR:CE1	2.34	0.63
1:A:567:ASN:O	1:A:570:MET:HB2	2.00	0.61
1:A:496:GLU:OE1	1:A:672:ARG:CD	2.49	0.61
1:A:699:SER:O	1:A:703:GLN:HG3	2.01	0.60
1:A:567:ASN:HD22	1:A:567:ASN:C	2.05	0.59
1:A:592:ARG:NH2	4:A:927:HOH:O	2.36	0.59
1:A:693:GLU:HB3	1:A:696:SER:HB3	1.86	0.57
1:A:688:LYS:HE2	4:A:893:HOH:O	2.06	0.55
1:A:567:ASN:HB3	1:A:570:MET:HE2	1.91	0.52
1:A:488:ILE:HG21	1:A:511:LEU:HD11	1.92	0.51
1:A:525:GLN:HG3	4:A:872:HOH:O	2.15	0.46
1:A:529:ASP:HB2	1:A:625:LYS:HE3	1.97	0.46
1:A:668:LYS:HB2	1:A:668:LYS:HE2	1.55	0.45
1:A:540:TRP:O	1:A:544:GLN:NE2	2.50	0.45
1:A:636:LEU:HB2	1:A:641:GLU:HG2	1.98	0.44
1:A:652:CYS:SG	1:A:657:VAL:HG21	2.58	0.44
1:A:511:LEU:HD22	1:A:676:MET:SD	2.58	0.44
1:A:528:ILE:HB	1:A:533:LEU:HD21	2.01	0.43
1:A:564:SER:O	1:A:566:ALA:N	2.51	0.43
1:A:567:ASN:HB3	1:A:570:MET:CE	2.49	0.41
1:A:529:ASP:OD2	1:A:625:LYS:NZ	2.51	0.41
1:A:475:PHE:CE1	1:A:519:TYR:HB3	2.56	0.41
1:A:544:GLN:N	1:A:544:GLN:NE2	2.64	0.40
1:A:535:LEU:HD23	1:A:535:LEU:HA	1.80	0.40
1:A:609:GLY:HA2	1:A:636:LEU:HD22	2.03	0.40
1:A:599:VAL:HG13	1:A:606:LEU:HD12	2.02	0.40



There are no symmetry-related clashes.

## 5.3 Torsion angles [i](#)

### 5.3.1 Protein backbone [i](#)

In the following table, the Percentiles column shows the percent Ramachandran outliers of the chain as a percentile score with respect to all X-ray entries followed by that with respect to entries of similar resolution.

The Analysed column shows the number of residues for which the backbone conformation was analysed, and the total number of residues.

Mol	Chain	Analysed	Favoured	Allowed	Outliers	Percentiles
1	A	241/247 (98%)	230 (95%)	9 (4%)	2 (1%)	21 7

All (2) Ramachandran outliers are listed below:

Mol	Chain	Res	Type
1	A	604	ALA
1	A	565	LEU

### 5.3.2 Protein sidechains [i](#)

In the following table, the Percentiles column shows the percent sidechain outliers of the chain as a percentile score with respect to all X-ray entries followed by that with respect to entries of similar resolution.

The Analysed column shows the number of residues for which the sidechain conformation was analysed, and the total number of residues.

Mol	Chain	Analysed	Rotameric	Outliers	Percentiles
1	A	208/212 (98%)	196 (94%)	12 (6%)	22 7

All (12) residues with a non-rotameric sidechain are listed below:

Mol	Chain	Res	Type
1	A	485	LEU
1	A	517	ARG
1	A	544	GLN
1	A	555	LEU
1	A	567	ASN
1	A	591	LEU

*Continued on next page...*

*Continued from previous page...*

Mol	Chain	Res	Type
1	A	634	SER
1	A	645	MET
1	A	646	ARG
1	A	663	ARG
1	A	668	LYS
1	A	694	PRO

Some sidechains can be flipped to improve hydrogen bonding and reduce clashes. All (10) such sidechains are listed below:

Mol	Chain	Res	Type
1	A	466	HIS
1	A	523	ASN
1	A	525	GLN
1	A	544	GLN
1	A	552	ASN
1	A	567	ASN
1	A	610	GLN
1	A	622	ASN
1	A	623	ASN
1	A	647	ASN

### 5.3.3 RNA [i](#)

There are no RNA molecules in this entry.

### 5.4 Non-standard residues in protein, DNA, RNA chains [i](#)

There are no non-standard protein/DNA/RNA residues in this entry.

### 5.5 Carbohydrates [i](#)

There are no carbohydrates in this entry.

### 5.6 Ligand geometry [i](#)

2 ligands are modelled in this entry.

In the following table, the Counts columns list the number of bonds (or angles) for which Mogul statistics could be retrieved, the number of bonds (or angles) that are observed in the model and

the number of bonds (or angles) that are defined in the Chemical Component Dictionary. The Link column lists molecule types, if any, to which the group is linked. The Z score for a bond length (or angle) is the number of standard deviations the observed value is removed from the expected value. A bond length (or angle) with  $|Z| > 2$  is considered an outlier worth inspection. RMSZ is the root-mean-square of all Z scores of the bond lengths (or angles).

Mol	Type	Chain	Res	Link	Bond lengths			Bond angles		
					Counts	RMSZ	# Z  > 2	Counts	RMSZ	# Z  > 2
2	ADP	A	708	-	25,29,29	1.34	2 (8%)	25,45,45	3.00	2 (8%)
3	MPD	A	869	-	7,7,7	0.34	0	9,10,10	0.57	0

In the following table, the Chirals column lists the number of chiral outliers, the number of chiral centers analysed, the number of these observed in the model and the number defined in the Chemical Component Dictionary. Similar counts are reported in the Torsion and Rings columns. '-' means no outliers of that kind were identified.

Mol	Type	Chain	Res	Link	Chirals	Torsions	Rings
2	ADP	A	708	-	-	0/12/32/32	0/3/3/3
3	MPD	A	869	-	-	0/5/5/5	0/0/0/0

All (2) bond length outliers are listed below:

Mol	Chain	Res	Type	Atoms	Z	Observed(Å)	Ideal(Å)
2	A	708	ADP	C2-N1	2.61	1.38	1.33
2	A	708	ADP	C2-N3	4.52	1.39	1.32

All (2) bond angle outliers are listed below:

Mol	Chain	Res	Type	Atoms	Z	Observed(°)	Ideal(°)
2	A	708	ADP	N3-C2-N1	-14.04	116.85	128.86
2	A	708	ADP	C2-N1-C6	2.86	123.62	118.75

There are no chirality outliers.

There are no torsion outliers.

There are no ring outliers.

No monomer is involved in short contacts.

## 5.7 Other polymers [i](#)

There are no such residues in this entry.

## 5.8 Polymer linkage issues

There are no chain breaks in this entry.

## 6 Fit of model and data

### 6.1 Protein, DNA and RNA chains

In the following table, the column labelled ‘#RSRZ> 2’ contains the number (and percentage) of RSRZ outliers, followed by percent RSRZ outliers for the chain as percentile scores relative to all X-ray entries and entries of similar resolution. The OWAB column contains the minimum, median, 95<sup>th</sup> percentile and maximum values of the occupancy-weighted average B-factor per residue. The column labelled ‘Q< 0.9’ lists the number of (and percentage) of residues with an average occupancy less than 0.9.

Mol	Chain	Analysed	<RSRZ>	#RSRZ>2	OWAB(Å <sup>2</sup> )	Q<0.9
1	A	243/247 (98%)	0.65	28 (11%) <b>5</b>   <b>5</b>	10, 20, 44, 66	0

All (28) RSRZ outliers are listed below:

Mol	Chain	Res	Type	RSRZ
1	A	569	GLY	8.5
1	A	604	ALA	7.6
1	A	707	ASP	7.5
1	A	601	GLU	7.2
1	A	602	GLN	7.1
1	A	600	GLY	5.6
1	A	603	GLY	4.7
1	A	480	ASP	4.7
1	A	605	GLY	4.3
1	A	633	THR	4.2
1	A	636	LEU	3.9
1	A	634	SER	3.7
1	A	551	ASP	3.6
1	A	567	ASN	3.5
1	A	568	PRO	3.4
1	A	566	ALA	3.3
1	A	663	ARG	3.2
1	A	479	PRO	3.1
1	A	531	HIS	3.0
1	A	635	ALA	2.9
1	A	570	MET	2.8
1	A	563	ILE	2.7
1	A	702	TYR	2.5
1	A	606	LEU	2.3
1	A	638	TYR	2.3
1	A	553	VAL	2.3
1	A	559	ILE	2.2

*Continued on next page...*

*Continued from previous page...*

Mol	Chain	Res	Type	RSRZ
1	A	639	GLU	2.0

## 6.2 Non-standard residues in protein, DNA, RNA chains [i](#)

There are no non-standard protein/DNA/RNA residues in this entry.

## 6.3 Carbohydrates [i](#)

There are no carbohydrates in this entry.

## 6.4 Ligands [i](#)

In the following table, the Atoms column lists the number of modelled atoms in the group and the number defined in the chemical component dictionary. The B-factors column lists the minimum, median, 95<sup>th</sup> percentile and maximum values of B factors of atoms in the group. The column labelled 'Q< 0.9' lists the number of atoms with occupancy less than 0.9.

Mol	Type	Chain	Res	Atoms	RSCC	RSR	B-factors(Å <sup>2</sup> )	Q<0.9
3	MPD	A	869	8/8	0.88	0.26	37,38,42,42	0
2	ADP	A	708	27/27	0.97	0.09	21,24,27,30	0

## 6.5 Other polymers [i](#)

There are no such residues in this entry.