



Full wwPDB X-ray Structure Validation Report ⓘ

Aug 20, 2023 – 01:36 AM EDT

PDB ID : 2FHJ
Title : Crystal structure of formylmethanofuran: tetrahydromethanopterin formyl-transferase in complex with its coenzymes
Authors : Acharya, P.; Warkentin, E.; Thauer, R.K.; Shima, S.; Ermler, U.
Deposited on : 2005-12-25
Resolution : 2.00 Å(reported)

This is a Full wwPDB X-ray Structure Validation Report for a publicly released PDB entry.

We welcome your comments at validation@mail.wwpdb.org

A user guide is available at

<https://www.wwpdb.org/validation/2017/XrayValidationReportHelp>

with specific help available everywhere you see the ⓘ symbol.

The types of validation reports are described at

<http://www.wwpdb.org/validation/2017/FAQs#types>.

The following versions of software and data (see [references ⓘ](#)) were used in the production of this report:

MolProbity : 4.02b-467
Mogul : 1.8.5 (274361), CSD as541be (2020)
Xtriage (Phenix) : 1.13
EDS : 2.35
buster-report : 1.1.7 (2018)
Percentile statistics : 20191225.v01 (using entries in the PDB archive December 25th 2019)
Refmac : 5.8.0158
CCP4 : 7.0.044 (Gargrove)
Ideal geometry (proteins) : Engh & Huber (2001)
Ideal geometry (DNA, RNA) : Parkinson et al. (1996)
Validation Pipeline (wwPDB-VP) : 2.35

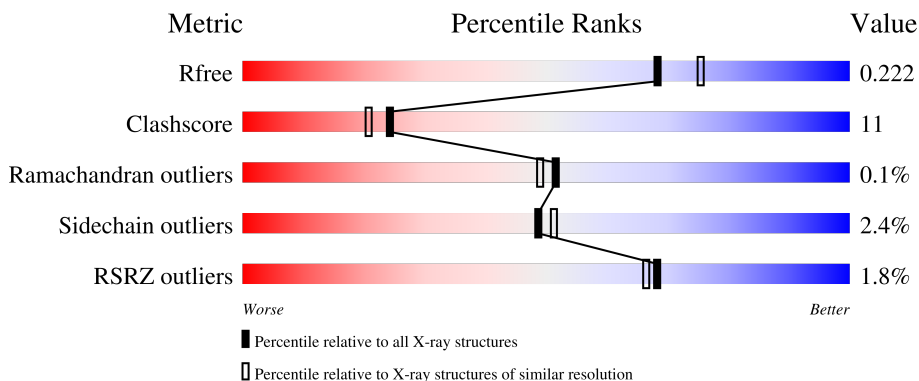
1 Overall quality at a glance i

The following experimental techniques were used to determine the structure:

X-RAY DIFFRACTION

The reported resolution of this entry is 2.00 Å.

Percentile scores (ranging between 0-100) for global validation metrics of the entry are shown in the following graphic. The table shows the number of entries on which the scores are based.



Metric	Whole archive (#Entries)	Similar resolution (#Entries, resolution range(Å))
R_{free}	130704	8085 (2.00-2.00)
Clashscore	141614	9178 (2.00-2.00)
Ramachandran outliers	138981	9054 (2.00-2.00)
Sidechain outliers	138945	9053 (2.00-2.00)
RSRZ outliers	127900	7900 (2.00-2.00)

The table below summarises the geometric issues observed across the polymeric chains and their fit to the electron density. The red, orange, yellow and green segments of the lower bar indicate the fraction of residues that contain outliers for ≥ 3 , 2, 1 and 0 types of geometric quality criteria respectively. A grey segment represents the fraction of residues that are not modelled. The numeric value for each fraction is indicated below the corresponding segment, with a dot representing fractions $\leq 5\%$. The upper red bar (where present) indicates the fraction of residues that have poor fit to the electron density. The numeric value is given above the bar.

Mol	Chain	Length	Quality of chain
1	A	296	<div style="display: flex; align-items: center;"> <div style="width: 2%; height: 10px; background-color: red; margin-right: 2px;"></div> <div style="width: 83%; height: 10px; background-color: green; margin-right: 2px;"></div> <div style="width: 16%; height: 10px; background-color: yellow; margin-right: 2px;"></div> <div style="width: 1%; height: 10px; background-color: orange; margin-right: 2px;"></div> <div style="width: 1%; height: 10px; background-color: grey;"></div> </div> <p style="margin-left: 20px;">2% 83% 16% .</p>
1	B	296	<div style="display: flex; align-items: center;"> <div style="width: 3%; height: 10px; background-color: red; margin-right: 2px;"></div> <div style="width: 84%; height: 10px; background-color: green; margin-right: 2px;"></div> <div style="width: 14%; height: 10px; background-color: yellow; margin-right: 2px;"></div> <div style="width: 1%; height: 10px; background-color: orange; margin-right: 2px;"></div> <div style="width: 1%; height: 10px; background-color: grey;"></div> </div> <p style="margin-left: 20px;">3% 84% 14% .</p>
1	C	296	<div style="display: flex; align-items: center;"> <div style="width: 0%; height: 10px; background-color: red; margin-right: 2px;"></div> <div style="width: 83%; height: 10px; background-color: green; margin-right: 2px;"></div> <div style="width: 16%; height: 10px; background-color: yellow; margin-right: 2px;"></div> <div style="width: 1%; height: 10px; background-color: orange; margin-right: 2px;"></div> <div style="width: 1%; height: 10px; background-color: grey;"></div> </div> <p style="margin-left: 20px;">% 83% 16%</p>
2	D	296	<div style="display: flex; align-items: center;"> <div style="width: 0%; height: 10px; background-color: red; margin-right: 2px;"></div> <div style="width: 80%; height: 10px; background-color: green; margin-right: 2px;"></div> <div style="width: 20%; height: 10px; background-color: yellow; margin-right: 2px;"></div> <div style="width: 1%; height: 10px; background-color: orange; margin-right: 2px;"></div> <div style="width: 1%; height: 10px; background-color: grey;"></div> </div> <p style="margin-left: 20px;">% 80% 20%</p>

The following table lists non-polymeric compounds, carbohydrate monomers and non-standard

residues in protein, DNA, RNA chains that are outliers for geometric or electron-density-fit criteria:

Mol	Type	Chain	Res	Chirality	Geometry	Clashes	Electron density
4	MFN	A	900[A]	X	-	-	-
4	MFN	A	900[B]	X	-	-	-
4	MFN	A	902[A]	-	X	-	-
4	MFN	A	902[B]	-	X	-	-
4	MFN	C	901[A]	X	-	-	-
4	MFN	C	901[B]	X	-	-	-
4	MFN	D	903	X	-	-	-
5	H4Z	A	905[A]	-	-	-	X
5	H4Z	A	905[B]	-	-	-	X
6	PE4	A	922	-	-	X	-
6	PE4	D	921	-	-	-	X

2 Entry composition

There are 8 unique types of molecules in this entry. The entry contains 9818 atoms, of which 0 are hydrogens and 0 are deuteriums.

In the tables below, the ZeroOcc column contains the number of atoms modelled with zero occupancy, the AltConf column contains the number of residues with at least one atom in alternate conformation and the Trace column contains the number of residues modelled with at most 2 atoms.

- Molecule 1 is a protein called Formylmethanofuran--tetrahydromethanopterin formyltransferase.

Mol	Chain	Residues	Atoms					ZeroOcc	AltConf	Trace
			Total	C	N	O	S			
1	A	296	2255	1423	362	453	17	0	9	0
1	B	296	2218	1398	358	446	16	0	6	0
1	C	296	2216	1398	357	446	15	0	2	0

- Molecule 2 is a protein called Formylmethanofuran--tetrahydromethanopterin formyltransferase.

Mol	Chain	Residues	Atoms					ZeroOcc	AltConf	Trace
			Total	C	N	O	S			
2	D	296	2261	1426	364	455	16	0	14	0

There is a discrepancy between the modelled and reference sequences:

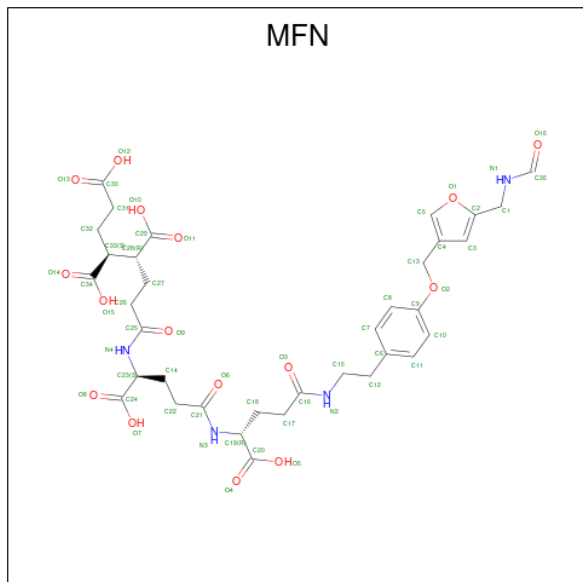
Chain	Residue	Modelled	Actual	Comment	Reference
D	58	CSO	CYS	modified residue	UNP Q49610

- Molecule 3 is POTASSIUM ION (three-letter code: K) (formula: K).

Mol	Chain	Residues	Atoms		ZeroOcc	AltConf
3	A	4	Total	K	0	0
			4	4		
3	B	5	Total	K	0	0
			5	5		
3	C	4	Total	K	0	0
			4	4		
3	D	4	Total	K	0	0
			4	4		

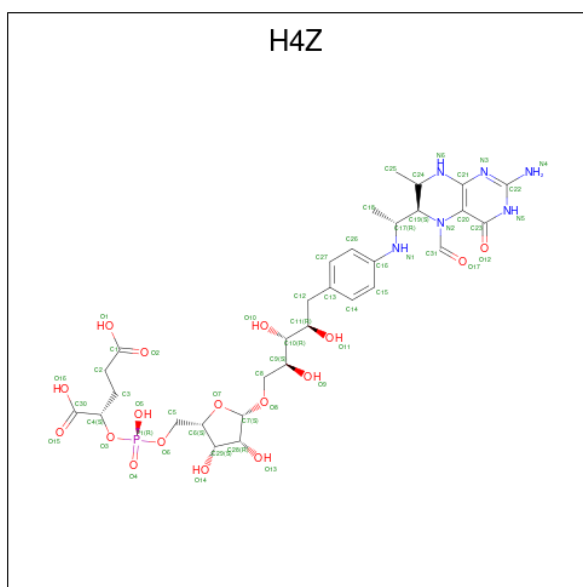
- Molecule 4 is N-[4,5,7-TRICARBOXYHEPTANOYL]-L-GAMMA-GLUTAMYL-N-{2-[4-({

5-[(FORMYLAMINO)METHYL]-3-FURYL}METHOXY)PHENYL]ETHYL}-D-GLUTAMINE (three-letter code: MFN) (formula: $C_{35}H_{44}N_4O_{16}$).



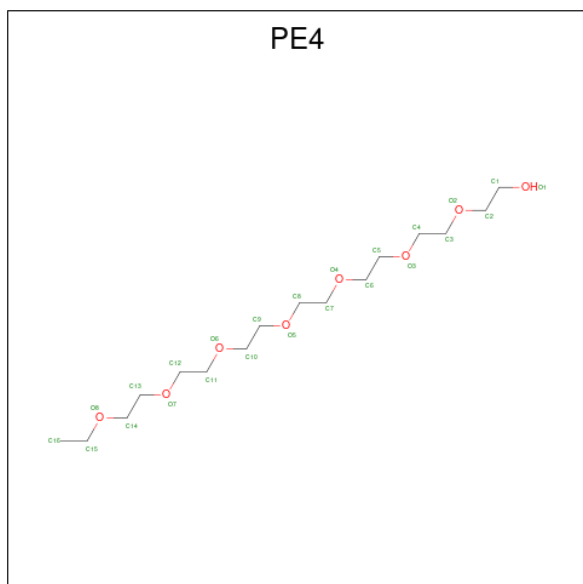
Mol	Chain	Residues	Atoms			ZeroOcc	AltConf	
			Total	C	N			O
4	A	1	Total	C	N	O	0	1
			80	53	8	19		
4	A	1	Total	C	N	O	0	1
			90	59	8	23		
4	C	1	Total	C	N	O	0	1
			64	44	6	14		
4	D	1	Total	C	N	O	0	0
			32	22	3	7		

- Molecule 5 is 5-(4-{[1-(2-AMINO-5-FORMYL-7-METHYL-4-OXO-3,4,5,6,7,8-HEXAHYDROPTERIDIN-6-YL)ETHYL]AMINO}PHENYL)-5-DEOXY-1-O-{5-O-[(1,3-DICARBOXYPROPOXY)(HYDROXY)PHOSPHORYL]PENTOFURANOSYL}PENTITOL (three-letter code: H4Z) (formula: $C_{31}H_{45}N_6O_{17}P$).



Mol	Chain	Residues	Atoms			ZeroOcc	AltConf	
			Total	C	N			O
5	A	1	47	32	12	3	0	1
5	C	1	18	10	6	2	0	0

- Molecule 6 is 2-{2-[2-(2-{2-[2-(2-ETHOXY-ETHOXY)-ETHOXY]-ETHOXY}-ETHOXY)-ETHOXY]-ETHOXY}-ETHANOL (three-letter code: PE4) (formula: C₁₆H₃₄O₈).



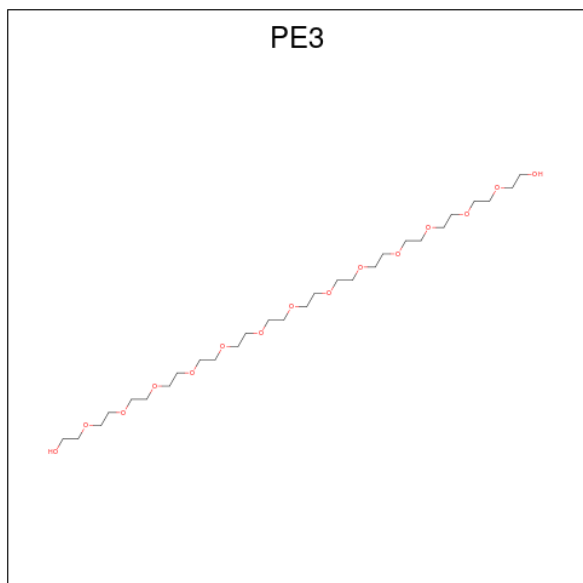
Mol	Chain	Residues	Atoms			ZeroOcc	AltConf
			Total	C	O		
6	A	1	18	12	6	0	0

Continued on next page...

Continued from previous page...

Mol	Chain	Residues	Atoms			ZeroOcc	AltConf
6	D	1	Total	C	O	0	0
			24	16	8		
6	D	1	Total	C	O	0	0
			18	12	6		

- Molecule 7 is 3,6,9,12,15,18,21,24,27,30,33,36,39-TRIDECAXAHENTETRACONTANE-1,41-DIOL (three-letter code: PE3) (formula: $C_{28}H_{58}O_{15}$).



Mol	Chain	Residues	Atoms			ZeroOcc	AltConf
7	C	1	Total	C	O	0	0
			9	6	3		

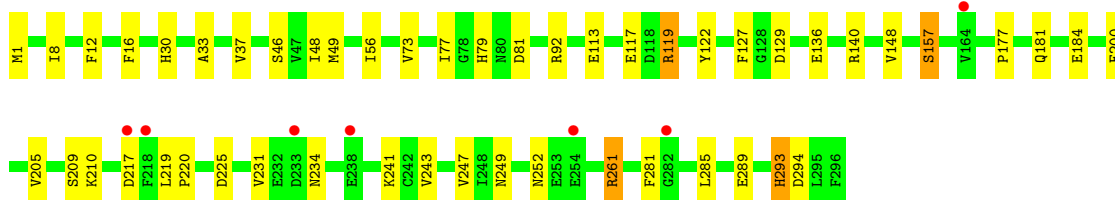
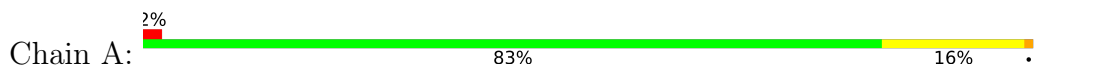
- Molecule 8 is water.

Mol	Chain	Residues	Atoms		ZeroOcc	AltConf
8	A	123	Total	O	0	0
			123	123		
8	B	79	Total	O	0	0
			79	79		
8	C	125	Total	O	0	0
			125	125		
8	D	124	Total	O	0	0
			124	124		

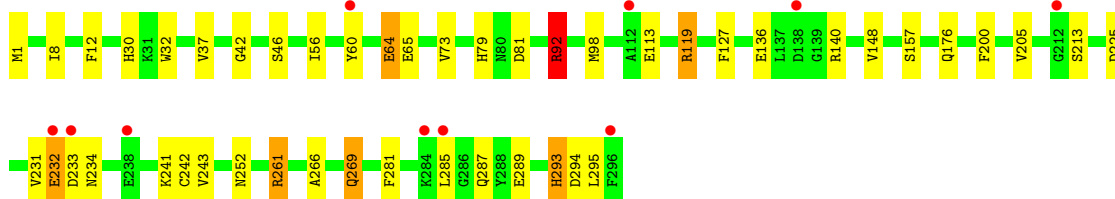
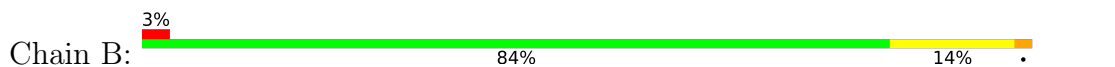
3 Residue-property plots [i](#)

These plots are drawn for all protein, RNA, DNA and oligosaccharide chains in the entry. The first graphic for a chain summarises the proportions of the various outlier classes displayed in the second graphic. The second graphic shows the sequence view annotated by issues in geometry and electron density. Residues are color-coded according to the number of geometric quality criteria for which they contain at least one outlier: green = 0, yellow = 1, orange = 2 and red = 3 or more. A red dot above a residue indicates a poor fit to the electron density ($RSRZ > 2$). Stretches of 2 or more consecutive residues without any outlier are shown as a green connector. Residues present in the sample, but not in the model, are shown in grey.

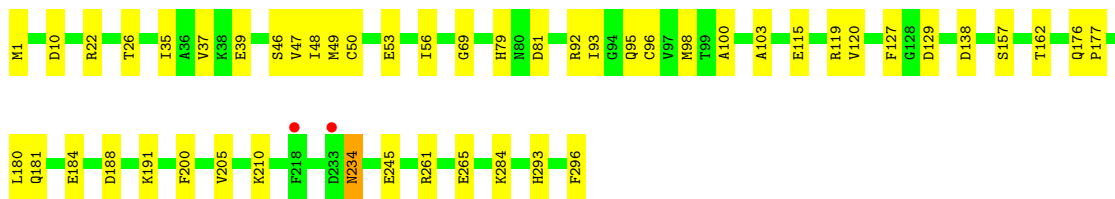
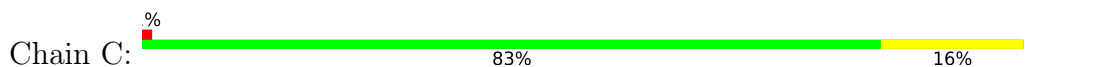
- Molecule 1: Formylmethanofuran--tetrahydromethanopterin formyltransferase



- Molecule 1: Formylmethanofuran--tetrahydromethanopterin formyltransferase



- Molecule 1: Formylmethanofuran--tetrahydromethanopterin formyltransferase



- Molecule 2: Formylmethanofuran--tetrahydromethanopterin formyltransferase





4 Data and refinement statistics

Property	Value	Source
Space group	P 1 21 1	Depositor
Cell constants a, b, c, α , β , γ	85.00Å 74.15Å 103.87Å 90.00° 113.54° 90.00°	Depositor
Resolution (Å)	20.00 – 2.00 19.53 – 2.00	Depositor EDS
% Data completeness (in resolution range)	96.4 (20.00-2.00) 96.4 (19.53-2.00)	Depositor EDS
R_{merge}	0.13	Depositor
R_{sym}	0.10	Depositor
$\langle I/\sigma(I) \rangle$ ¹	2.90 (at 2.01Å)	Xtrriage
Refinement program	REFMAC 5.2	Depositor
R, R_{free}	0.219 , 0.256 0.229 , 0.222	Depositor DCC
R_{free} test set	3856 reflections (5.00%)	wwPDB-VP
Wilson B-factor (Å ²)	23.6	Xtrriage
Anisotropy	0.785	Xtrriage
Bulk solvent k_{sol} (e/Å ³), B_{sol} (Å ²)	0.42 , 65.7	EDS
L-test for twinning ²	$\langle L \rangle = 0.45$, $\langle L^2 \rangle = 0.27$	Xtrriage
Estimated twinning fraction	0.039 for h,-k,-h-l	Xtrriage
F_o, F_c correlation	0.94	EDS
Total number of atoms	9818	wwPDB-VP
Average B, all atoms (Å ²)	33.0	wwPDB-VP

Xtrriage's analysis on translational NCS is as follows: *The largest off-origin peak in the Patterson function is 9.02% of the height of the origin peak. No significant pseudotranslation is detected.*

¹Intensities estimated from amplitudes.

²Theoretical values of $\langle |L| \rangle$, $\langle L^2 \rangle$ for acentric reflections are 0.5, 0.333 respectively for untwinned datasets, and 0.375, 0.2 for perfectly twinned datasets.

5 Model quality [i](#)

5.1 Standard geometry [i](#)

Bond lengths and bond angles in the following residue types are not validated in this section: H4Z, MFN, PE3, PE4, CSO, K

The Z score for a bond length (or angle) is the number of standard deviations the observed value is removed from the expected value. A bond length (or angle) with $|Z| > 5$ is considered an outlier worth inspection. RMSZ is the root-mean-square of all Z scores of the bond lengths (or angles).

Mol	Chain	Bond lengths		Bond angles	
		RMSZ	# $ Z > 5$	RMSZ	# $ Z > 5$
1	A	0.51	0/2321	0.88	8/3143 (0.3%)
1	B	0.51	0/2273	0.97	7/3084 (0.2%)
1	C	0.56	0/2267	0.74	3/3072 (0.1%)
2	D	0.59	1/2349 (0.0%)	0.80	3/3178 (0.1%)
All	All	0.54	1/9210 (0.0%)	0.85	21/12477 (0.2%)

Chiral center outliers are detected by calculating the chiral volume of a chiral center and verifying if the center is modelled as a planar moiety or with the opposite hand. A planarity outlier is detected by checking planarity of atoms in a peptide group, atoms in a mainchain group or atoms of a sidechain that are expected to be planar.

Mol	Chain	#Chirality outliers	#Planarity outliers
1	A	0	1
1	B	0	3
2	D	0	1
All	All	0	5

All (1) bond length outliers are listed below:

Mol	Chain	Res	Type	Atoms	Z	Observed(Å)	Ideal(Å)
2	D	23	VAL	CB-CG2	5.11	1.63	1.52

All (21) bond angle outliers are listed below:

Mol	Chain	Res	Type	Atoms	Z	Observed(°)	Ideal(°)
2	D	22	ARG	NE-CZ-NH2	-22.31	109.15	120.30
1	B	261	ARG	NE-CZ-NH2	-21.73	109.44	120.30
1	B	92	ARG	NE-CZ-NH2	-21.20	109.70	120.30
1	B	92	ARG	NE-CZ-NH1	17.76	129.18	120.30
1	A	261	ARG	NE-CZ-NH1	-17.55	111.53	120.30

Continued on next page...

Continued from previous page...

Mol	Chain	Res	Type	Atoms	Z	Observed(°)	Ideal(°)
1	A	92	ARG	NE-CZ-NH1	-16.63	111.98	120.30
1	A	92	ARG	NE-CZ-NH2	15.44	128.02	120.30
1	A	261	ARG	NE-CZ-NH2	15.02	127.81	120.30
1	C	22	ARG	NE-CZ-NH1	-14.99	112.81	120.30
1	C	22	ARG	NE-CZ-NH2	13.81	127.20	120.30
1	B	261	ARG	NE-CZ-NH1	13.59	127.09	120.30
2	D	22	ARG	NE-CZ-NH1	12.75	126.68	120.30
2	D	22	ARG	CD-NE-CZ	11.64	139.90	123.60
1	B	261	ARG	CD-NE-CZ	11.25	139.35	123.60
1	A	119	ARG	NE-CZ-NH2	9.81	125.21	120.30
1	B	92	ARG	CD-NE-CZ	9.73	137.22	123.60
1	A	92	ARG	CD-NE-CZ	8.52	135.53	123.60
1	A	261	ARG	CD-NE-CZ	8.52	135.53	123.60
1	C	22	ARG	CD-NE-CZ	7.42	133.99	123.60
1	B	119	ARG	NE-CZ-NH1	6.57	123.58	120.30
1	A	119	ARG	NE-CZ-NH1	-6.45	117.07	120.30

There are no chirality outliers.

All (5) planarity outliers are listed below:

Mol	Chain	Res	Type	Group
1	A	261	ARG	Sidechain
1	B	119	ARG	Sidechain
1	B	261	ARG	Sidechain
1	B	92	ARG	Sidechain
2	D	22	ARG	Sidechain

5.2 Too-close contacts [\(i\)](#)

In the following table, the Non-H and H(model) columns list the number of non-hydrogen atoms and hydrogen atoms in the chain respectively. The H(added) column lists the number of hydrogen atoms added and optimized by MolProbity. The Clashes column lists the number of clashes within the asymmetric unit, whereas Symm-Clashes lists symmetry-related clashes.

Mol	Chain	Non-H	H(model)	H(added)	Clashes	Symm-Clashes
1	A	2255	0	2154	53	0
1	B	2218	0	2085	43	0
1	C	2216	0	2114	45	0
2	D	2261	0	2128	51	0
3	A	4	0	0	0	0
3	B	5	0	0	0	0

Continued on next page...

Continued from previous page...

Mol	Chain	Non-H	H(model)	H(added)	Clashes	Symm-Clashes
3	C	4	0	0	0	0
3	D	4	0	0	0	0
4	A	170	0	121	25	0
4	C	64	0	46	11	0
4	D	32	0	23	3	0
5	A	47	0	32	9	0
5	C	18	0	12	5	0
6	A	18	0	23	25	0
6	D	42	0	59	6	0
7	C	9	0	11	4	0
8	A	123	0	0	7	0
8	B	79	0	0	4	0
8	C	125	0	0	3	0
8	D	124	0	0	3	0
All	All	9818	0	8808	201	0

The all-atom clashscore is defined as the number of clashes found per 1000 atoms (including hydrogen atoms). The all-atom clashscore for this structure is 11.

All (201) close contacts within the same asymmetric unit are listed below, sorted by their clash magnitude.

Atom-1	Atom-2	Interatomic distance (Å)	Clash overlap (Å)
1:A:49:MET:SD	4:A:902[A]:MFN:O5	2.16	1.03
1:A:49:MET:SD	4:A:902[B]:MFN:O5	2.20	0.98
5:A:905[B]:H4Z:H251	8:A:8000:HOH:O	1.70	0.92
1:B:269[A]:GLN:NE2	1:C:69:GLY:O	2.07	0.87
6:A:922:PE4:H12	1:C:184:GLU:OE1	1.79	0.83
5:A:905[B]:H4Z:C25	8:A:8000:HOH:O	2.24	0.82
1:A:177:PRO:O	6:A:922:PE4:H62	1.86	0.75
1:C:1:MET:SD	1:C:293:HIS:HD2	2.09	0.74
6:A:922:PE4:H22	1:C:180:LEU:HG	1.69	0.74
1:A:285:LEU:HD13	5:A:905[A]:H4Z:H27	1.68	0.74
4:A:902[B]:MFN:H262	4:A:902[B]:MFN:O10	1.89	0.72
1:A:16:PHE:CE1	5:A:905[B]:H4Z:H31	2.25	0.72
1:B:12:PHE:CD1	1:B:289:GLU:HG2	2.25	0.72
2:D:234:ASN:C	2:D:234:ASN:HD22	1.91	0.72
1:A:12:PHE:CD1	1:A:289:GLU:HG2	2.23	0.72
1:B:37:VAL:HG21	1:B:73:VAL:HG11	1.71	0.72
1:B:64:GLU:HG2	1:B:65:GLU:HG3	1.73	0.70
4:C:901[A]:MFN:O3	4:C:901[A]:MFN:C12	2.41	0.68
2:D:30[A]:HIS:CE1	2:D:60[A]:TYR:CE2	2.82	0.68

Continued on next page...

Continued from previous page...

Atom-1	Atom-2	Interatomic distance (Å)	Clash overlap (Å)
1:A:219:LEU:HD23	4:A:902[A]:MFN:H182	1.77	0.67
4:C:901[A]:MFN:O3	4:C:901[A]:MFN:H121	1.95	0.67
1:A:219:LEU:HD23	4:A:902[B]:MFN:H182	1.77	0.67
1:A:220:PRO:HD3	4:A:902[B]:MFN:H19	1.76	0.67
1:C:115:GLU:OE1	1:C:162:THR:N	2.27	0.66
1:C:234:ASN:HD22	1:C:234:ASN:C	1.97	0.66
6:A:922:PE4:H111	8:A:4160:HOH:O	1.95	0.66
6:A:922:PE4:C8	1:B:32:TRP:HE1	2.10	0.66
1:A:220:PRO:HD3	4:A:902[A]:MFN:H19	1.78	0.65
1:A:247:VAL:HG11	5:A:905[B]:H4Z:HN5	1.61	0.65
6:A:922:PE4:C2	1:C:180:LEU:HG	2.27	0.65
1:A:37:VAL:HG21	1:A:73:VAL:HG11	1.78	0.64
1:C:188:ASP:OD1	8:C:8028:HOH:O	2.13	0.64
2:D:1:MET:SD	2:D:293:HIS:HD2	2.21	0.64
1:A:122:TYR:OH	4:A:900[B]:MFN:O8	2.11	0.63
1:B:266:ALA:HA	1:B:269[A]:GLN:NE2	2.13	0.63
1:B:30:HIS:HD2	7:C:3792:PE3:H62	1.63	0.63
1:C:127:PHE:HB2	4:C:901[B]:MFN:H151	1.81	0.62
2:D:98[B]:MET:HE1	2:D:145:ILE:HG21	1.80	0.62
2:D:123[B]:LYS:NZ	4:D:903:MFN:O5	2.31	0.62
5:C:904:H4Z:C31	5:C:904:H4Z:H183	2.30	0.61
1:C:39:GLU:OE2	6:D:921:PE4:H131	2.00	0.61
4:A:902[A]:MFN:O10	4:A:902[A]:MFN:H262	2.00	0.61
2:D:48:ILE:HG22	2:D:49:MET:HG3	1.83	0.60
1:C:129:ASP:OD1	2:D:213:SER:OG	2.15	0.60
1:A:148:VAL:HB	1:B:243:VAL:HB	1.83	0.60
4:A:902[A]:MFN:H8	1:B:98:MET:CE	2.32	0.58
1:A:247:VAL:HG11	5:A:905[B]:H4Z:N5	2.19	0.57
2:D:115:GLU:OE1	2:D:162:THR:N	2.37	0.57
4:A:902[A]:MFN:H8	1:B:98:MET:HE2	1.86	0.57
2:D:253[B]:GLU:OE2	2:D:288:TYR:HB3	2.05	0.57
1:B:64:GLU:HB3	8:B:4113:HOH:O	2.03	0.57
4:C:901[A]:MFN:H11A	2:D:205:VAL:HG11	1.86	0.57
1:C:47:VAL:HG13	1:C:53:GLU:HG3	1.87	0.57
1:A:243:VAL:HB	1:B:148:VAL:HB	1.87	0.56
1:B:200:PHE:CG	1:B:205:VAL:HG22	2.40	0.56
1:C:98:MET:HE2	4:C:901[B]:MFN:H10	1.87	0.56
2:D:79:HIS:HD2	2:D:81:ASP:H	1.53	0.56
6:A:922:PE4:C1	1:C:184:GLU:OE1	2.51	0.56
1:B:231:VAL:O	1:B:234:ASN:ND2	2.39	0.56
4:C:901[B]:MFN:H3	2:D:209:SER:HB3	1.86	0.56

Continued on next page...

Continued from previous page...

Atom-1	Atom-2	Interatomic distance (Å)	Clash overlap (Å)
1:C:10:ASP:HB2	1:C:293:HIS:HE1	1.71	0.56
1:B:8:ILE:O	1:B:293:HIS:HE1	1.89	0.56
1:C:176[B]:GLN:NE2	8:C:4111:HOH:O	2.33	0.56
1:A:184:GLU:OE2	2:D:30[B]:HIS:HE1	1.89	0.55
1:C:79:HIS:HD2	1:C:81:ASP:H	1.54	0.55
1:C:98:MET:CE	4:C:901[B]:MFN:H10	2.37	0.55
4:A:902[B]:MFN:H8	1:B:98:MET:HE2	1.89	0.55
2:D:47:VAL:HG13	2:D:53:GLU:HG3	1.90	0.54
1:A:200:PHE:CG	1:A:205:VAL:HG22	2.43	0.53
1:C:10:ASP:HB2	1:C:293:HIS:CE1	2.43	0.53
1:B:37:VAL:HG21	1:B:73:VAL:CG1	2.38	0.53
1:B:64:GLU:HG2	1:B:65:GLU:CG	2.38	0.53
1:A:249:ASN:HD21	5:A:905[B]:H4Z:HN41	1.57	0.52
1:C:26:THR:O	1:C:103:ALA:HA	2.10	0.52
2:D:10:ASP:HB2	2:D:293:HIS:CE1	2.44	0.52
1:A:8:ILE:O	1:A:293:HIS:HE1	1.93	0.52
1:A:181:GLN:HA	6:A:922:PE4:C11	2.40	0.51
1:A:37:VAL:HG11	1:A:56:ILE:HG12	1.93	0.51
1:C:98:MET:CE	4:C:901[B]:MFN:C10	2.89	0.51
2:D:30[B]:HIS:CG	2:D:31:LYS:N	2.79	0.51
2:D:184:GLU:HG3	6:D:920:PE4:H163	1.92	0.51
1:B:37:VAL:HG11	1:B:56:ILE:HG12	1.93	0.50
4:A:900[A]:MFN:H12A	1:B:205:VAL:HG11	1.92	0.50
6:A:922:PE4:C1	2:D:32:TRP:HZ2	2.24	0.50
6:A:922:PE4:H82	8:A:4321:HOH:O	2.11	0.50
4:A:902[B]:MFN:H8	1:B:98:MET:CE	2.40	0.50
1:B:79:HIS:HD2	1:B:81:ASP:H	1.60	0.50
1:A:184:GLU:OE2	2:D:30[B]:HIS:CE1	2.65	0.50
2:D:7:GLU:OE2	8:D:6104:HOH:O	2.20	0.49
1:C:127:PHE:HB2	4:C:901[A]:MFN:H152	1.92	0.49
1:B:42:GLY:O	1:B:92:ARG:NH2	2.46	0.49
2:D:26:THR:O	2:D:103:ALA:HA	2.12	0.49
1:C:100:ALA:HB1	8:C:6039:HOH:O	2.11	0.49
2:D:234:ASN:C	2:D:234:ASN:ND2	2.64	0.49
1:A:117[A]:GLU:HG3	1:A:157:SER:HB2	1.95	0.48
1:C:95:GLN:CG	2:D:49:MET:HB2	2.43	0.48
1:A:181:GLN:HB2	6:A:922:PE4:O3	2.12	0.48
2:D:10:ASP:HB2	2:D:293:HIS:HE1	1.78	0.48
6:A:922:PE4:H82	1:B:32:TRP:HE1	1.78	0.48
1:C:245:GLU:OE2	5:C:904:H4Z:N4	2.44	0.48
2:D:30[A]:HIS:CE1	2:D:60[A]:TYR:CZ	3.02	0.48

Continued on next page...

Continued from previous page...

Atom-1	Atom-2	Interatomic distance (Å)	Clash overlap (Å)
1:C:48:ILE:HD11	5:C:904:H4Z:H31	1.95	0.48
1:A:37:VAL:HG21	1:A:73:VAL:CG1	2.43	0.48
1:C:46:SER:O	1:C:50:CYS:HB2	2.14	0.47
1:C:119:ARG:HG2	1:C:157:SER:OG	2.13	0.47
1:B:30:HIS:HD2	7:C:3792:PE3:C6	2.27	0.47
6:A:922:PE4:H11	1:C:184:GLU:HB2	1.96	0.47
6:A:922:PE4:C12	8:A:4119:HOH:O	2.62	0.46
1:A:16:PHE:HE1	5:A:905[B]:H4Z:H31	1.75	0.46
1:A:122:TYR:OH	4:A:900[A]:MFN:O8	2.15	0.46
2:D:1:MET:SD	2:D:293:HIS:CD2	3.06	0.46
1:A:30:HIS:HB2	2:D:188[B]:ASP:OD2	2.16	0.46
6:A:922:PE4:O1	1:C:181:GLN:HA	2.16	0.46
1:C:49:MET:HB2	2:D:95:GLN:CG	2.46	0.46
1:A:49:MET:SD	4:A:902[A]:MFN:C20	3.01	0.46
6:A:922:PE4:C3	6:A:922:PE4:O4	2.63	0.46
2:D:37:VAL:HG11	2:D:56:ILE:HG12	1.97	0.46
1:C:191:LYS:NZ	7:C:3792:PE3:H32	2.31	0.46
6:A:922:PE4:H31	6:A:922:PE4:H91	1.97	0.45
2:D:217:ASP:OD2	2:D:217:ASP:N	2.47	0.45
1:B:30:HIS:CD2	7:C:3792:PE3:H62	2.49	0.45
1:A:79:HIS:HD2	1:A:81:ASP:H	1.63	0.45
1:B:281:PHE:HB3	1:B:285:LEU:HD12	1.99	0.45
1:C:176[A]:GLN:HB3	1:C:177:PRO:HD3	1.99	0.45
2:D:21:ALA:HB2	2:D:160[B]:ILE:HD12	1.99	0.45
2:D:98[A]:MET:HE2	4:D:903:MFN:H8	1.98	0.45
1:B:30:HIS:CE1	1:B:60:TYR:CE2	3.04	0.45
1:B:113:GLU:OE2	1:B:252[A]:ASN:ND2	2.50	0.45
1:A:231:VAL:O	1:A:234:ASN:ND2	2.49	0.45
4:C:901[B]:MFN:H3	2:D:209:SER:CB	2.47	0.45
1:A:48:ILE:O	4:A:902[A]:MFN:O7	2.35	0.45
1:A:220:PRO:HG3	4:A:902[B]:MFN:H142	1.98	0.44
1:A:1[A]:MET:O	1:A:1[A]:MET:HG2	2.18	0.44
1:C:10:ASP:CB	1:C:293:HIS:CE1	3.00	0.44
1:C:93:ILE:HD12	1:C:120:VAL:HG11	2.00	0.44
6:D:921:PE4:H162	6:D:921:PE4:H111	2.00	0.44
1:A:220:PRO:HG3	4:A:902[A]:MFN:H142	1.98	0.44
1:B:266:ALA:HA	1:B:269[A]:GLN:HE22	1.81	0.44
2:D:34:MET:CE	2:D:38:LYS:HE2	2.46	0.44
1:A:219:LEU:CD2	4:A:902[B]:MFN:H182	2.44	0.44
1:B:176:GLN:HA	1:B:242:CYS:SG	2.58	0.44
1:B:232[B]:GLU:H	1:B:232[B]:GLU:HG2	1.50	0.44

Continued on next page...

Continued from previous page...

Atom-1	Atom-2	Interatomic distance (Å)	Clash overlap (Å)
1:B:269[A]:GLN:NE2	8:B:4295:HOH:O	2.50	0.44
1:A:210:LYS:C	5:A:905[A]:H4Z:H251	2.39	0.44
6:A:922:PE4:H32	6:A:922:PE4:C7	2.48	0.44
1:A:12:PHE:CE1	1:A:289:GLU:HG2	2.53	0.43
1:A:113:GLU:OE2	1:A:252:ASN:ND2	2.48	0.43
1:C:127:PHE:CE2	4:C:901[A]:MFN:H131	2.52	0.43
2:D:123[B]:LYS:HZ2	4:D:903:MFN:H19	1.83	0.43
1:A:293:HIS:HB2	8:A:4089:HOH:O	2.18	0.43
6:A:922:PE4:C8	8:A:4321:HOH:O	2.65	0.43
1:A:48:ILE:O	4:A:902[B]:MFN:O7	2.35	0.43
1:A:219:LEU:CD2	4:A:902[A]:MFN:H182	2.45	0.43
1:B:293:HIS:HB2	8:B:8044:HOH:O	2.18	0.43
2:D:56:ILE:H	6:D:921:PE4:H101	1.83	0.43
1:A:181:GLN:HA	6:A:922:PE4:H112	2.00	0.43
2:D:92:ARG:O	2:D:96:CYS:HB2	2.18	0.43
1:B:287:GLN:N	1:B:287:GLN:OE1	2.52	0.42
2:D:93:ILE:HD12	2:D:120:VAL:HG11	2.01	0.42
1:A:281:PHE:HB3	1:A:285:LEU:HD12	1.99	0.42
1:C:10:ASP:CA	1:C:293:HIS:CE1	3.02	0.42
1:C:261:ARG:O	1:C:265:GLU:HG3	2.19	0.42
2:D:253[B]:GLU:HG3	2:D:257:LYS:HD3	2.01	0.42
1:C:35:ILE:HA	6:D:921:PE4:H151	2.00	0.42
1:A:129:ASP:OD1	1:B:213:SER:OG	2.33	0.42
1:B:295:LEU:O	8:B:6053:HOH:O	2.22	0.42
1:C:37:VAL:HG11	1:C:56:ILE:HG12	2.01	0.42
2:D:119:ARG:HG2	2:D:157:SER:OG	2.19	0.42
2:D:200:PHE:CG	2:D:205:VAL:HG22	2.54	0.42
2:D:219:LEU:HD23	2:D:220:PRO:HD2	2.01	0.42
1:A:136:GLU:HA	1:A:140:ARG:O	2.20	0.42
4:A:902[B]:MFN:H131	1:B:127:PHE:CE2	2.55	0.42
2:D:144:LYS:CE	8:D:8017:HOH:O	2.67	0.42
2:D:25:ILE:HD12	2:D:37:VAL:HG22	2.02	0.42
1:A:1[A]:MET:HG3	1:A:8:ILE:O	2.20	0.42
2:D:277:SER:OG	2:D:278:ALA:N	2.52	0.42
6:A:922:PE4:O5	1:B:32:TRP:NE1	2.49	0.41
1:B:136:GLU:HA	1:B:140:ARG:O	2.20	0.41
6:A:922:PE4:H31	6:A:922:PE4:C9	2.51	0.41
1:B:1:MET:HE1	1:B:293:HIS:HA	2.02	0.41
6:D:921:PE4:H162	6:D:921:PE4:C11	2.51	0.41
1:A:33:ALA:O	1:A:37:VAL:HG23	2.21	0.41
2:D:269:GLN:NE2	8:D:4325:HOH:O	2.54	0.41

Continued on next page...

Continued from previous page...

Atom-1	Atom-2	Interatomic distance (Å)	Clash overlap (Å)
5:C:904:H4Z:C31	5:C:904:H4Z:C18	2.94	0.41
2:D:46:SER:O	2:D:50:CYS:HB2	2.20	0.41
1:C:10:ASP:HA	1:C:293:HIS:CE1	2.56	0.41
1:C:200:PHE:CG	1:C:205:VAL:HG22	2.56	0.41
1:B:231:VAL:HG12	1:B:233:ASP:HB3	2.02	0.40
2:D:176:GLN:HB3	2:D:177:PRO:HD3	2.01	0.40
6:A:922:PE4:O4	6:A:922:PE4:H31	2.22	0.40
1:C:92:ARG:O	1:C:96:CYS:HB2	2.21	0.40
1:A:209:SER:HB3	4:A:902[B]:MFN:H3	2.02	0.40
6:A:922:PE4:H22	1:C:180:LEU:CG	2.46	0.40
6:A:922:PE4:H82	1:B:32:TRP:NE1	2.36	0.40
1:A:119:ARG:NH1	1:A:122:TYR:CD1	2.90	0.40
1:A:127:PHE:CE2	4:A:900[B]:MFN:H131	2.56	0.40
1:C:210:LYS:C	5:C:904:H4Z:H251	2.41	0.40
2:D:59:GLY:O	2:D:73:VAL:HG22	2.22	0.40

There are no symmetry-related clashes.

5.3 Torsion angles [i](#)

5.3.1 Protein backbone [i](#)

In the following table, the Percentiles column shows the percent Ramachandran outliers of the chain as a percentile score with respect to all X-ray entries followed by that with respect to entries of similar resolution.

The Analysed column shows the number of residues for which the backbone conformation was analysed, and the total number of residues.

Mol	Chain	Analysed	Favoured	Allowed	Outliers	Percentiles	
1	A	302/296 (102%)	290 (96%)	12 (4%)	0	100	100
1	B	300/296 (101%)	284 (95%)	16 (5%)	0	100	100
1	C	296/296 (100%)	287 (97%)	8 (3%)	1 (0%)	41	37
2	D	307/296 (104%)	296 (96%)	11 (4%)	0	100	100
All	All	1205/1184 (102%)	1157 (96%)	47 (4%)	1 (0%)	51	49

All (1) Ramachandran outliers are listed below:

Mol	Chain	Res	Type
1	C	138	ASP

5.3.2 Protein sidechains [i](#)

In the following table, the Percentiles column shows the percent sidechain outliers of the chain as a percentile score with respect to all X-ray entries followed by that with respect to entries of similar resolution.

The Analysed column shows the number of residues for which the sidechain conformation was analysed, and the total number of residues.

Mol	Chain	Analysed	Rotameric	Outliers	Percentiles	
1	A	233/229 (102%)	225 (97%)	8 (3%)	37	36
1	B	222/229 (97%)	211 (95%)	11 (5%)	24	20
1	C	226/229 (99%)	223 (99%)	3 (1%)	69	74
2	D	231/228 (101%)	229 (99%)	2 (1%)	78	83
All	All	912/915 (100%)	888 (97%)	24 (3%)	49	48

All (24) residues with a non-rotameric sidechain are listed below:

Mol	Chain	Res	Type
1	A	46	SER
1	A	157	SER
1	A	217[A]	ASP
1	A	217[B]	ASP
1	A	225	ASP
1	A	241	LYS
1	A	293	HIS
1	A	294	ASP
1	B	46	SER
1	B	64	GLU
1	B	157	SER
1	B	225	ASP
1	B	232[A]	GLU
1	B	232[B]	GLU
1	B	241	LYS
1	B	269[A]	GLN
1	B	269[B]	GLN
1	B	293	HIS
1	B	294	ASP
1	C	234	ASN
1	C	284	LYS

Continued on next page...

Continued from previous page...

Mol	Chain	Res	Type
1	C	296	PHE
2	D	22	ARG
2	D	234	ASN

Sometimes sidechains can be flipped to improve hydrogen bonding and reduce clashes. All (17) such sidechains are listed below:

Mol	Chain	Res	Type
1	A	79	HIS
1	A	215	GLN
1	A	293	HIS
1	B	30	HIS
1	B	79	HIS
1	B	176	GLN
1	B	293	HIS
1	C	79	HIS
1	C	95	GLN
1	C	215	GLN
1	C	234	ASN
1	C	293	HIS
2	D	79	HIS
2	D	181	GLN
2	D	234	ASN
2	D	269	GLN
2	D	293	HIS

5.3.3 RNA [i](#)

There are no RNA molecules in this entry.

5.4 Non-standard residues in protein, DNA, RNA chains [i](#)

1 non-standard protein/DNA/RNA residue is modelled in this entry.

In the following table, the Counts columns list the number of bonds (or angles) for which Mogul statistics could be retrieved, the number of bonds (or angles) that are observed in the model and the number of bonds (or angles) that are defined in the Chemical Component Dictionary. The Link column lists molecule types, if any, to which the group is linked. The Z score for a bond length (or angle) is the number of standard deviations the observed value is removed from the expected value. A bond length (or angle) with $|Z| > 2$ is considered an outlier worth inspection. RMSZ is the root-mean-square of all Z scores of the bond lengths (or angles).

Mol	Type	Chain	Res	Link	Bond lengths			Bond angles		
					Counts	RMSZ	# Z > 2	Counts	RMSZ	# Z > 2
2	CSO	D	58	2	3,6,7	0.39	0	0,6,8	-	-

In the following table, the Chirals column lists the number of chiral outliers, the number of chiral centers analysed, the number of these observed in the model and the number defined in the Chemical Component Dictionary. Similar counts are reported in the Torsion and Rings columns. '-' means no outliers of that kind were identified.

Mol	Type	Chain	Res	Link	Chirals	Torsions	Rings
2	CSO	D	58	2	-	0/1/5/7	-

There are no bond length outliers.

There are no bond angle outliers.

There are no chirality outliers.

There are no torsion outliers.

There are no ring outliers.

No monomer is involved in short contacts.

5.5 Carbohydrates [i](#)

There are no monosaccharides in this entry.

5.6 Ligand geometry [i](#)

Of 31 ligands modelled in this entry, 17 are monoatomic - leaving 14 for Mogul analysis.

In the following table, the Counts columns list the number of bonds (or angles) for which Mogul statistics could be retrieved, the number of bonds (or angles) that are observed in the model and the number of bonds (or angles) that are defined in the Chemical Component Dictionary. The Link column lists molecule types, if any, to which the group is linked. The Z score for a bond length (or angle) is the number of standard deviations the observed value is removed from the expected value. A bond length (or angle) with $|Z| > 2$ is considered an outlier worth inspection. RMSZ is the root-mean-square of all Z scores of the bond lengths (or angles).

Mol	Type	Chain	Res	Link	Bond lengths			Bond angles		
					Counts	RMSZ	# Z > 2	Counts	RMSZ	# Z > 2
5	H4Z	A	905[A]	-	23,24,58	2.48	5 (21%)	27,34,84	3.89	11 (40%)
7	PE3	C	3792	-	8,8,42	0.56	0	7,7,41	0.25	0
4	MFN	C	901[A]	-	29,33,56	1.86	6 (20%)	34,42,73	2.45	17 (50%)
6	PE4	D	920	-	23,23,23	0.57	0	22,22,22	0.33	0

Mol	Type	Chain	Res	Link	Bond lengths			Bond angles		
					Counts	RMSZ	# Z > 2	Counts	RMSZ	# Z > 2
5	H4Z	C	904	-	18,19,58	3.56	6 (33%)	13,28,84	3.57	9 (69%)
4	MFN	A	902[A]	-	41,45,56	1.94	13 (31%)	52,58,73	2.86	19 (36%)
5	H4Z	A	905[B]	-	26,27,58	2.94	7 (26%)	24,39,84	2.20	9 (37%)
6	PE4	D	921	-	17,17,23	0.54	0	16,16,22	0.66	0
4	MFN	C	901[B]	-	29,33,56	1.99	8 (27%)	34,42,73	2.77	13 (38%)
4	MFN	A	900[A]	-	36,40,56	1.75	8 (22%)	46,52,73	2.13	15 (32%)
4	MFN	A	902[B]	-	43,47,56	1.94	13 (30%)	52,60,73	2.70	23 (44%)
4	MFN	D	903	-	29,33,56	1.91	8 (27%)	34,42,73	1.78	10 (29%)
6	PE4	A	922	-	17,17,23	0.38	0	16,16,22	0.88	0
4	MFN	A	900[B]	-	38,42,56	1.80	9 (23%)	46,54,73	2.06	16 (34%)

In the following table, the Chirals column lists the number of chiral outliers, the number of chiral centers analysed, the number of these observed in the model and the number defined in the Chemical Component Dictionary. Similar counts are reported in the Torsion and Rings columns. '-' means no outliers of that kind were identified.

Mol	Type	Chain	Res	Link	Chirals	Torsions	Rings
5	H4Z	A	905[A]	-	-	4/5/17/79	0/3/3/4
7	PE3	C	3792	-	-	3/6/6/40	-
4	MFN	C	901[A]	-	1/1/4/17	12/24/28/63	0/2/2/2
6	PE4	D	920	-	-	13/21/21/21	-
5	H4Z	C	904	-	-	3/4/22/79	0/1/2/4
4	MFN	A	902[A]	-	-	29/41/45/63	0/2/2/2
5	H4Z	A	905[B]	-	-	7/10/26/79	0/2/3/4
6	PE4	D	921	-	-	13/15/15/21	-
4	MFN	C	901[B]	-	1/1/4/17	12/24/28/63	0/2/2/2
4	MFN	A	900[A]	-	1/1/7/17	16/35/39/63	0/2/2/2
4	MFN	A	902[B]	-	-	28/43/47/63	0/2/2/2
4	MFN	D	903	-	1/1/4/17	9/24/28/63	0/2/2/2
6	PE4	A	922	-	-	12/15/15/21	-
4	MFN	A	900[B]	-	1/1/7/17	14/37/41/63	0/2/2/2

All (83) bond length outliers are listed below:

Mol	Chain	Res	Type	Atoms	Z	Observed(Å)	Ideal(Å)
5	C	904	H4Z	C31-N2	9.89	1.49	1.35
5	A	905[B]	H4Z	C31-N2	9.81	1.48	1.35

Continued on next page...

Continued from previous page...

Mol	Chain	Res	Type	Atoms	Z	Observed(Å)	Ideal(Å)
5	C	904	H4Z	C20-C23	7.67	1.51	1.41
5	A	905[A]	H4Z	C20-C23	7.55	1.51	1.41
5	A	905[B]	H4Z	C20-C23	6.74	1.50	1.41
5	C	904	H4Z	C21-N3	6.25	1.46	1.34
5	A	905[B]	H4Z	C21-N3	6.14	1.46	1.34
5	A	905[A]	H4Z	C21-N3	6.11	1.46	1.34
4	C	901[B]	MFN	C3-C2	-4.71	1.33	1.39
4	C	901[A]	MFN	C3-C2	-4.69	1.33	1.39
4	C	901[B]	MFN	O4-C20	4.64	1.36	1.22
4	A	900[B]	MFN	C3-C2	-4.63	1.33	1.39
4	A	900[A]	MFN	C3-C2	-4.57	1.33	1.39
4	D	903	MFN	C3-C2	-4.57	1.33	1.39
4	D	903	MFN	O4-C20	4.49	1.35	1.22
4	A	900[B]	MFN	O4-C20	4.47	1.35	1.22
4	C	901[A]	MFN	O4-C20	4.47	1.35	1.22
4	A	900[A]	MFN	O4-C20	4.46	1.35	1.22
5	A	905[A]	H4Z	C20-N2	4.43	1.47	1.38
4	A	902[B]	MFN	C3-C2	-4.35	1.33	1.39
4	A	902[A]	MFN	C3-C2	-4.34	1.33	1.39
4	A	902[B]	MFN	O4-C20	4.30	1.35	1.22
4	A	902[A]	MFN	O4-C20	4.27	1.35	1.22
5	C	904	H4Z	C20-N2	3.92	1.46	1.41
4	C	901[A]	MFN	C13-C4	-3.77	1.41	1.50
4	C	901[A]	MFN	C1-C2	-3.66	1.47	1.51
4	A	900[A]	MFN	C13-C4	-3.62	1.42	1.50
5	A	905[B]	H4Z	C16-N1	3.59	1.46	1.39
4	A	902[A]	MFN	C17-C16	3.57	1.58	1.51
4	A	900[B]	MFN	C13-C4	-3.44	1.42	1.50
4	A	902[B]	MFN	C17-C16	3.39	1.57	1.51
4	C	901[B]	MFN	C13-C4	-3.37	1.42	1.50
4	A	902[B]	MFN	C35-N1	3.35	1.40	1.33
4	C	901[B]	MFN	C35-N1	3.34	1.40	1.33
4	D	903	MFN	C1-C2	-3.30	1.48	1.51
4	A	902[A]	MFN	C22-C21	3.21	1.57	1.51
4	A	902[B]	MFN	C1-C2	-3.15	1.48	1.51
4	A	900[B]	MFN	C35-N1	3.15	1.39	1.33
4	D	903	MFN	C35-N1	3.12	1.39	1.33
4	A	902[B]	MFN	C22-C21	3.10	1.57	1.51
4	C	901[B]	MFN	C1-C2	-3.03	1.48	1.51
4	D	903	MFN	C13-C4	-2.98	1.43	1.50
5	A	905[B]	H4Z	C20-N2	2.87	1.45	1.41
4	A	900[B]	MFN	C26-C25	2.85	1.56	1.50

Continued on next page...

Continued from previous page...

Mol	Chain	Res	Type	Atoms	Z	Observed(Å)	Ideal(Å)
4	A	900[A]	MFN	C26-C25	2.79	1.56	1.50
4	A	902[A]	MFN	C1-C2	-2.76	1.48	1.51
5	A	905[A]	H4Z	C16-N1	2.69	1.46	1.38
5	A	905[B]	H4Z	C20-C21	-2.65	1.36	1.41
4	A	900[A]	MFN	C1-C2	-2.62	1.48	1.51
4	C	901[A]	MFN	O2-C9	-2.61	1.31	1.37
4	A	902[B]	MFN	C13-C4	-2.61	1.44	1.50
4	A	900[B]	MFN	C22-C21	2.57	1.56	1.51
5	C	904	H4Z	C19-N2	2.56	1.50	1.47
4	A	902[A]	MFN	C15-N2	2.54	1.52	1.46
4	A	902[A]	MFN	C13-C4	-2.54	1.44	1.50
5	A	905[A]	H4Z	C20-C21	-2.53	1.36	1.41
4	A	900[B]	MFN	C1-C2	-2.50	1.48	1.51
4	A	902[B]	MFN	C28-C29	2.48	1.56	1.50
4	A	902[A]	MFN	C26-C25	2.45	1.56	1.51
4	A	900[A]	MFN	C22-C21	2.40	1.55	1.51
4	A	902[B]	MFN	C15-N2	2.40	1.51	1.46
4	A	902[A]	MFN	C28-C29	2.38	1.56	1.50
4	C	901[A]	MFN	C35-N1	2.35	1.38	1.33
5	A	905[B]	H4Z	C19-N2	2.35	1.49	1.47
5	C	904	H4Z	C20-C21	-2.35	1.36	1.41
4	A	902[A]	MFN	C19-N3	2.33	1.50	1.45
4	A	902[A]	MFN	O5-C20	-2.26	1.23	1.30
4	D	903	MFN	C22-C21	2.25	1.55	1.50
4	A	900[A]	MFN	O2-C9	-2.24	1.32	1.37
4	A	902[B]	MFN	C26-C25	2.23	1.55	1.51
4	A	902[A]	MFN	O6-C21	2.22	1.27	1.23
4	C	901[B]	MFN	C1-N1	2.14	1.50	1.46
4	C	901[B]	MFN	C22-C21	2.12	1.54	1.50
4	A	900[A]	MFN	O5-C20	-2.09	1.23	1.30
4	A	902[B]	MFN	O5-C20	-2.09	1.23	1.30
4	A	900[B]	MFN	O5-C20	-2.09	1.23	1.30
4	A	900[B]	MFN	O2-C9	-2.08	1.32	1.37
4	D	903	MFN	C17-C16	2.06	1.55	1.51
4	A	902[B]	MFN	C19-N3	2.06	1.50	1.45
4	A	902[B]	MFN	O6-C21	2.06	1.27	1.23
4	A	902[A]	MFN	C18-C19	2.05	1.58	1.53
4	D	903	MFN	O5-C20	-2.02	1.23	1.30
4	C	901[B]	MFN	O5-C20	-2.01	1.24	1.30

All (142) bond angle outliers are listed below:

Mol	Chain	Res	Type	Atoms	Z	Observed(°)	Ideal(°)
5	A	905[A]	H4Z	C25-C24-C19	11.09	131.06	113.31
5	A	905[A]	H4Z	C24-C19-N2	9.77	117.83	108.62
4	A	902[A]	MFN	C22-C21-N3	9.76	132.77	115.83
5	A	905[A]	H4Z	C19-C24-N6	9.37	117.45	108.62
4	A	902[B]	MFN	C22-C21-N3	9.03	131.50	115.83
4	A	902[A]	MFN	C18-C19-N3	7.98	127.02	110.88
4	A	902[B]	MFN	C18-C19-N3	7.83	126.69	110.88
4	C	901[B]	MFN	O16-C35-N1	-7.08	117.74	124.89
4	C	901[B]	MFN	C22-C21-N3	7.08	128.08	116.10
4	A	900[A]	MFN	C14-C23-N4	6.61	124.24	110.88
5	C	904	H4Z	C25-C24-N6	6.57	117.00	109.55
4	C	901[A]	MFN	O16-C35-N1	-5.97	118.86	124.89
4	A	900[B]	MFN	C14-C23-N4	5.97	122.94	110.88
4	C	901[B]	MFN	C1-C2-C3	-5.86	121.57	129.54
4	A	902[A]	MFN	O6-C21-N3	-5.81	113.15	122.95
5	A	905[A]	H4Z	C20-C21-N6	5.69	123.33	118.13
5	A	905[B]	H4Z	C21-C20-C23	5.46	118.71	114.44
4	A	902[A]	MFN	C17-C18-C19	5.45	123.33	113.16
4	A	902[B]	MFN	O6-C21-N3	-5.40	113.85	122.95
5	C	904	H4Z	C20-N2-C19	-5.32	109.92	119.32
4	A	902[B]	MFN	C17-C18-C19	5.01	122.52	113.16
5	C	904	H4Z	C21-C20-C23	4.93	118.30	114.44
5	A	905[B]	H4Z	C20-N2-C19	-4.87	110.72	119.32
4	C	901[B]	MFN	C18-C19-N3	-4.81	101.16	110.88
5	C	904	H4Z	C17-C19-N2	4.79	117.66	110.89
4	A	902[A]	MFN	O6-C21-C22	-4.39	113.99	122.02
4	A	900[B]	MFN	C22-C21-N3	4.34	123.35	115.83
4	A	900[B]	MFN	C1-C2-C3	-4.32	123.66	129.54
4	A	900[A]	MFN	C1-C2-C3	-4.28	123.71	129.54
4	C	901[B]	MFN	O2-C13-C4	-4.24	96.45	109.16
4	A	902[B]	MFN	O6-C21-C22	-4.12	114.48	122.02
5	A	905[B]	H4Z	C22-N5-C23	4.10	122.44	115.93
4	A	902[A]	MFN	C1-C2-C3	-4.08	123.99	129.54
4	A	900[A]	MFN	C22-C21-N3	4.04	122.83	115.83
4	C	901[A]	MFN	O2-C13-C4	-3.99	97.18	109.16
4	D	903	MFN	C1-C2-C3	-3.96	124.15	129.54
4	A	902[B]	MFN	C1-C2-C3	-3.93	124.19	129.54
4	A	902[A]	MFN	C15-C12-C6	3.88	121.86	112.87
4	A	902[A]	MFN	C20-C19-N3	-3.83	101.48	110.55
4	C	901[B]	MFN	C18-C17-C16	-3.80	104.56	113.04
4	C	901[A]	MFN	C1-C2-C3	-3.74	124.44	129.54
4	C	901[A]	MFN	C22-C21-N3	3.74	122.43	116.10
4	C	901[A]	MFN	C13-C4-C5	-3.67	122.46	127.92

Continued on next page...

Continued from previous page...

Mol	Chain	Res	Type	Atoms	Z	Observed(°)	Ideal(°)
4	D	903	MFN	O5-C20-O4	-3.63	115.85	124.09
4	A	902[B]	MFN	C18-C19-C20	-3.54	101.81	110.35
4	C	901[B]	MFN	O6-C21-N3	-3.52	115.48	121.95
4	A	900[B]	MFN	O6-C21-N3	-3.47	117.09	122.95
4	A	902[A]	MFN	O7-C24-O8	-3.47	116.22	124.09
4	A	900[B]	MFN	C13-O2-C9	-3.46	109.10	117.65
5	A	905[A]	H4Z	C17-N1-C16	-3.45	113.21	122.14
4	C	901[A]	MFN	C20-C19-N3	3.45	118.72	110.55
4	A	900[A]	MFN	C13-O2-C9	-3.43	109.17	117.65
4	A	902[A]	MFN	O3-C16-C17	-3.41	115.78	122.02
5	C	904	H4Z	C22-N5-C23	3.37	121.29	115.93
4	C	901[A]	MFN	C18-C17-C16	-3.36	105.52	113.04
4	A	902[B]	MFN	O7-C24-O8	-3.34	116.50	124.09
4	C	901[B]	MFN	O6-C21-C22	-3.32	115.90	122.06
4	A	900[A]	MFN	C3-C4-C5	3.31	110.57	105.12
4	C	901[A]	MFN	C3-C4-C5	3.31	110.56	105.12
5	A	905[A]	H4Z	C22-N5-C23	3.27	121.13	115.93
4	C	901[A]	MFN	O3-C16-C17	-3.25	116.07	122.02
4	D	903	MFN	C22-C21-N3	3.24	121.58	116.10
4	A	900[A]	MFN	O6-C21-N3	-3.21	117.54	122.95
4	A	902[B]	MFN	C20-C19-N3	-3.17	103.05	110.55
4	A	900[A]	MFN	C13-C4-C5	-3.13	123.27	127.92
5	A	905[A]	H4Z	C22-N3-C21	3.12	121.53	114.54
4	A	902[A]	MFN	C18-C19-C20	-3.08	102.92	110.35
4	A	900[A]	MFN	C23-N4-C25	-3.07	112.35	121.48
4	A	902[B]	MFN	C15-C12-C6	3.07	119.98	112.87
5	C	904	H4Z	C20-C21-N6	3.06	122.04	119.08
4	C	901[B]	MFN	O5-C20-O4	-3.04	117.18	124.09
4	A	900[B]	MFN	C22-C14-C23	3.03	118.82	113.16
5	C	904	H4Z	C22-N3-C21	3.01	121.29	114.54
4	A	900[B]	MFN	C3-C4-C5	3.00	110.05	105.12
4	A	902[A]	MFN	C15-N2-C16	2.99	128.39	122.84
4	A	900[A]	MFN	C22-C14-C23	2.96	118.70	113.16
4	A	900[A]	MFN	C14-C23-C24	2.90	117.34	110.35
4	A	902[B]	MFN	C19-N3-C21	-2.89	114.20	121.65
4	A	900[A]	MFN	O5-C20-O4	-2.87	117.58	124.09
4	A	902[A]	MFN	C19-N3-C21	-2.80	114.44	121.65
4	C	901[A]	MFN	C7-C6-C11	2.79	122.55	118.17
4	A	900[B]	MFN	C23-N4-C25	-2.75	113.30	121.48
4	D	903	MFN	O5-C20-C19	2.72	122.43	113.40
4	D	903	MFN	C18-C19-C20	2.67	116.79	110.35
4	D	903	MFN	O3-C16-N2	-2.65	118.02	123.01

Continued on next page...

Continued from previous page...

Mol	Chain	Res	Type	Atoms	Z	Observed(°)	Ideal(°)
4	D	903	MFN	C17-C18-C19	-2.63	108.23	113.16
4	C	901[B]	MFN	C3-C4-C5	2.62	109.43	105.12
4	A	902[A]	MFN	O7-C24-C23	2.61	122.08	113.40
4	A	902[B]	MFN	O3-C16-C17	-2.60	117.26	122.02
4	A	900[A]	MFN	C14-C22-C21	-2.57	107.29	113.04
4	A	900[B]	MFN	C14-C23-C24	2.56	116.54	110.35
4	A	902[B]	MFN	O16-C35-N1	-2.56	122.30	124.89
4	A	902[A]	MFN	O9-C25-N4	-2.56	118.63	122.95
4	A	902[B]	MFN	O7-C24-C23	2.56	121.91	113.40
5	A	905[A]	H4Z	N3-C22-N5	-2.55	121.42	125.42
4	A	900[B]	MFN	O5-C20-O4	-2.55	118.30	124.09
4	C	901[A]	MFN	O6-C21-C22	-2.54	117.34	122.06
5	A	905[A]	H4Z	C21-C20-C23	2.53	116.82	114.57
4	A	900[B]	MFN	C13-C4-C5	-2.52	124.18	127.92
4	A	900[A]	MFN	C17-C18-C19	-2.50	108.47	113.16
4	A	900[A]	MFN	O9-C25-C26	-2.49	117.43	122.06
4	D	903	MFN	O6-C21-C22	-2.49	117.44	122.06
4	C	901[A]	MFN	C18-C19-C20	2.46	116.30	110.35
4	C	901[B]	MFN	C13-C4-C5	-2.46	124.27	127.92
4	A	902[B]	MFN	C18-C17-C16	-2.45	107.56	113.04
5	A	905[B]	H4Z	C22-N3-C21	2.44	120.01	114.54
4	C	901[B]	MFN	O5-C20-C19	2.44	121.50	113.40
4	A	902[B]	MFN	O9-C25-N4	-2.43	118.84	122.95
4	C	901[A]	MFN	O5-C20-O4	-2.41	118.61	124.09
4	A	902[B]	MFN	O10-C29-C28	2.41	121.77	114.03
5	A	905[A]	H4Z	C20-N2-C19	-2.40	114.63	121.16
4	A	902[A]	MFN	C12-C6-C11	-2.40	115.17	121.23
4	A	900[B]	MFN	C14-C22-C21	-2.38	107.73	113.04
5	A	905[A]	H4Z	C17-C19-N2	2.37	115.19	109.54
4	A	900[B]	MFN	O9-C25-C26	-2.36	117.67	122.06
4	C	901[A]	MFN	O5-C20-C19	2.36	121.23	113.40
4	A	902[B]	MFN	O10-C29-O11	-2.35	117.45	123.30
4	A	900[B]	MFN	C17-C18-C19	-2.34	108.78	113.16
4	D	903	MFN	C3-C4-C5	2.34	108.97	105.12
5	C	904	H4Z	O17-C31-N2	-2.34	121.98	125.36
4	A	902[A]	MFN	O9-C25-C26	-2.34	117.75	122.02
4	A	902[A]	MFN	O3-C16-N2	-2.33	118.63	123.01
4	A	902[A]	MFN	O10-C29-C28	2.30	121.41	114.03
5	A	905[B]	H4Z	N3-C22-N5	-2.26	121.88	125.42
5	C	904	H4Z	N3-C22-N5	-2.26	121.88	125.42
4	C	901[A]	MFN	C18-C19-N3	2.23	115.38	110.88
4	A	900[A]	MFN	O5-C20-C19	2.22	120.77	113.40

Continued on next page...

Continued from previous page...

Mol	Chain	Res	Type	Atoms	Z	Observed(°)	Ideal(°)
5	A	905[B]	H4Z	C17-C19-N2	-2.19	107.81	110.93
4	D	903	MFN	C17-C16-N2	2.17	120.07	116.42
4	A	902[B]	MFN	O5-C20-O4	-2.15	119.21	124.09
4	C	901[B]	MFN	O3-C16-C17	-2.13	118.12	122.02
4	A	900[B]	MFN	O16-C35-N1	-2.12	122.75	124.89
4	C	901[A]	MFN	C15-C12-C6	2.11	117.77	112.87
4	A	900[B]	MFN	O5-C20-C19	2.11	120.42	113.40
4	A	902[B]	MFN	O9-C25-C26	-2.11	118.16	122.02
5	A	905[B]	H4Z	N4-C22-N3	2.09	120.51	117.25
4	A	902[B]	MFN	C15-N2-C16	2.08	126.70	122.84
5	A	905[B]	H4Z	C20-C23-N5	-2.08	118.86	123.14
4	C	901[A]	MFN	C12-C15-N2	-2.08	105.71	111.99
5	A	905[B]	H4Z	C26-C16-N1	-2.06	116.18	120.95
4	A	902[B]	MFN	C3-C4-C5	2.01	108.42	105.12
4	A	902[B]	MFN	O3-C16-N2	-2.00	119.23	123.01

All (5) chirality outliers are listed below:

Mol	Chain	Res	Type	Atom
4	A	900[A]	MFN	C23
4	A	900[B]	MFN	C23
4	C	901[A]	MFN	C19
4	C	901[B]	MFN	C19
4	D	903	MFN	C19

All (175) torsion outliers are listed below:

Mol	Chain	Res	Type	Atoms
4	A	900[A]	MFN	O6-C21-N3-C19
4	A	900[A]	MFN	C22-C21-N3-C19
4	A	900[A]	MFN	O9-C25-N4-C23
4	A	900[A]	MFN	C26-C25-N4-C23
4	A	900[A]	MFN	C17-C18-C19-N3
4	A	900[B]	MFN	O6-C21-N3-C19
4	A	900[B]	MFN	C22-C21-N3-C19
4	A	900[B]	MFN	O9-C25-N4-C23
4	A	900[B]	MFN	C26-C25-N4-C23
4	A	900[B]	MFN	C17-C18-C19-N3
4	A	902[A]	MFN	O6-C21-N3-C19
4	A	902[A]	MFN	C22-C21-N3-C19
4	A	902[A]	MFN	O9-C25-N4-C23
4	A	902[A]	MFN	C26-C25-N4-C23

Continued on next page...

Continued from previous page...

Mol	Chain	Res	Type	Atoms
4	A	902[A]	MFN	C17-C18-C19-N3
4	A	902[A]	MFN	O3-C16-N2-C15
4	A	902[A]	MFN	C17-C16-N2-C15
4	A	902[A]	MFN	C6-C12-C15-N2
4	A	902[B]	MFN	O6-C21-N3-C19
4	A	902[B]	MFN	C22-C21-N3-C19
4	A	902[B]	MFN	O9-C25-N4-C23
4	A	902[B]	MFN	C26-C25-N4-C23
4	A	902[B]	MFN	O3-C16-N2-C15
4	A	902[B]	MFN	C17-C16-N2-C15
4	A	902[B]	MFN	C6-C12-C15-N2
4	C	901[A]	MFN	O6-C21-N3-C19
4	C	901[A]	MFN	C22-C21-N3-C19
4	C	901[A]	MFN	C17-C18-C19-N3
4	C	901[A]	MFN	O16-C35-N1-C1
4	C	901[B]	MFN	O6-C21-N3-C19
4	C	901[B]	MFN	C22-C21-N3-C19
4	D	903	MFN	O6-C21-N3-C19
4	D	903	MFN	C22-C21-N3-C19
4	D	903	MFN	O16-C35-N1-C1
5	A	905[A]	H4Z	N1-C17-C19-N2
5	A	905[A]	H4Z	N1-C17-C19-C24
5	A	905[B]	H4Z	C15-C16-N1-C17
5	A	905[B]	H4Z	N1-C17-C19-N2
5	A	905[B]	H4Z	N1-C17-C19-C24
5	A	905[B]	H4Z	C18-C17-C19-N2
5	A	905[B]	H4Z	O17-C31-N2-C20
5	C	904	H4Z	O17-C31-N2-C19
5	C	904	H4Z	O17-C31-N2-C20
4	C	901[A]	MFN	C12-C15-N2-C16
4	A	902[A]	MFN	C14-C23-N4-C25
4	A	902[B]	MFN	C14-C23-N4-C25
4	A	900[B]	MFN	O3-C16-N2-C15
5	A	905[A]	H4Z	C26-C16-N1-C17
4	A	902[A]	MFN	C22-C14-C23-N4
4	A	902[B]	MFN	C22-C14-C23-N4
4	A	902[B]	MFN	C17-C18-C19-N3
6	D	920	PE4	O2-C3-C4-O3
4	A	900[A]	MFN	O3-C16-N2-C15
5	A	905[A]	H4Z	C15-C16-N1-C17
6	D	920	PE4	O4-C7-C8-O5
4	C	901[B]	MFN	C10-C9-O2-C13

Continued on next page...

Continued from previous page...

Mol	Chain	Res	Type	Atoms
4	C	901[B]	MFN	C8-C9-O2-C13
6	D	921	PE4	C11-C12-O7-C13
4	A	900[B]	MFN	C17-C16-N2-C15
6	D	920	PE4	O3-C5-C6-O4
4	A	900[B]	MFN	C17-C18-C19-C20
4	A	902[A]	MFN	C17-C18-C19-C20
4	A	902[B]	MFN	C22-C14-C23-C24
4	A	902[B]	MFN	C17-C18-C19-C20
4	C	901[A]	MFN	C17-C18-C19-C20
4	A	902[B]	MFN	C10-C9-O2-C13
4	A	902[B]	MFN	C8-C9-O2-C13
4	C	901[A]	MFN	C8-C9-O2-C13
6	D	921	PE4	O6-C11-C12-O7
6	D	921	PE4	C5-C6-O4-C7
5	A	905[B]	H4Z	C26-C16-N1-C17
4	C	901[A]	MFN	O3-C16-N2-C15
4	C	901[A]	MFN	C10-C9-O2-C13
4	C	901[B]	MFN	C17-C18-C19-N3
6	D	921	PE4	O7-C13-C14-O8
4	C	901[A]	MFN	C16-C17-C18-C19
4	A	902[A]	MFN	C10-C9-O2-C13
4	A	902[A]	MFN	C26-C27-C28-C29
4	A	902[B]	MFN	C26-C27-C28-C29
4	A	902[A]	MFN	C8-C9-O2-C13
4	A	902[B]	MFN	O9-C25-C26-C27
4	A	902[A]	MFN	O9-C25-C26-C27
6	D	921	PE4	O6-C10-C9-O5
4	C	901[A]	MFN	C18-C19-C20-O4
4	A	900[B]	MFN	C10-C9-O2-C13
4	C	901[B]	MFN	C4-C13-O2-C9
4	C	901[B]	MFN	C16-C17-C18-C19
7	C	3792	PE3	O4-C5-C6-O7
4	A	900[A]	MFN	C17-C18-C19-C20
4	A	902[A]	MFN	C22-C14-C23-C24
4	C	901[B]	MFN	C17-C18-C19-C20
4	D	903	MFN	C17-C18-C19-C20
4	A	900[A]	MFN	C17-C16-N2-C15
4	D	903	MFN	O3-C16-N2-C15
4	A	900[B]	MFN	C8-C9-O2-C13
6	D	920	PE4	O7-C13-C14-O8
4	A	900[A]	MFN	C10-C9-O2-C13
4	A	902[A]	MFN	O3-C16-C17-C18

Continued on next page...

Continued from previous page...

Mol	Chain	Res	Type	Atoms
4	A	900[B]	MFN	N3-C19-C20-O4
4	A	900[B]	MFN	N3-C19-C20-O5
4	A	902[B]	MFN	C18-C19-C20-O4
4	A	902[B]	MFN	C18-C19-C20-O5
4	C	901[A]	MFN	C18-C19-C20-O5
4	A	900[A]	MFN	C8-C9-O2-C13
6	D	921	PE4	C14-C13-O7-C12
4	D	903	MFN	C10-C9-O2-C13
4	D	903	MFN	C8-C9-O2-C13
4	A	902[B]	MFN	O3-C16-C17-C18
4	A	902[B]	MFN	C25-C26-C27-C28
6	D	921	PE4	O3-C5-C6-O4
5	C	904	H4Z	C18-C17-C19-N2
6	D	920	PE4	O6-C10-C9-O5
4	A	900[A]	MFN	N3-C19-C20-O4
4	A	902[B]	MFN	N4-C25-C26-C27
6	A	922	PE4	C12-C11-O6-C10
4	A	902[A]	MFN	N4-C25-C26-C27
4	A	900[A]	MFN	N3-C19-C20-O5
4	A	902[A]	MFN	N3-C19-C20-O4
4	A	902[A]	MFN	N3-C19-C20-O5
4	A	902[B]	MFN	N3-C19-C20-O5
4	C	901[B]	MFN	C15-C12-C6-C11
4	C	901[B]	MFN	C15-C12-C6-C7
4	D	903	MFN	C16-C17-C18-C19
4	A	902[A]	MFN	C18-C19-C20-O4
4	A	902[A]	MFN	C18-C19-C20-O5
4	A	902[A]	MFN	C15-C12-C6-C11
4	A	902[A]	MFN	C15-C12-C6-C7
4	A	902[B]	MFN	C15-C12-C6-C7
4	A	902[B]	MFN	C15-C12-C6-C11
6	A	922	PE4	C1-C2-O2-C3
6	D	921	PE4	C8-C7-O4-C6
6	A	922	PE4	C7-C8-O5-C9
4	A	902[B]	MFN	N3-C19-C20-O4
6	D	920	PE4	C12-C11-O6-C10
6	D	921	PE4	C13-C14-O8-C15
7	C	3792	PE3	C2-C3-O4-C5
6	D	920	PE4	C16-C15-O8-C14
6	D	920	PE4	C1-C2-O2-C3
6	D	920	PE4	C6-C5-O3-C4
7	C	3792	PE3	C9-C8-O7-C6

Continued on next page...

Continued from previous page...

Mol	Chain	Res	Type	Atoms
4	C	901[B]	MFN	O16-C35-N1-C1
5	A	905[B]	H4Z	C18-C17-C19-C24
6	D	920	PE4	C10-C9-O5-C8
6	D	920	PE4	C4-C3-O2-C2
4	A	900[A]	MFN	C18-C19-C20-O5
4	A	900[B]	MFN	C18-C19-C20-O4
4	A	900[B]	MFN	C18-C19-C20-O5
6	A	922	PE4	C5-C6-O4-C7
6	A	922	PE4	C10-C9-O5-C8
6	A	922	PE4	C6-C5-O3-C4
6	D	921	PE4	C10-C9-O5-C8
6	D	920	PE4	O6-C11-C12-O7
6	A	922	PE4	O4-C7-C8-O5
6	A	922	PE4	O6-C10-C9-O5
4	A	900[A]	MFN	C18-C19-C20-O4
6	A	922	PE4	C3-C4-O3-C5
4	A	902[A]	MFN	C27-C28-C29-O10
4	A	902[A]	MFN	C27-C28-C29-O11
4	A	902[B]	MFN	C27-C28-C29-O11
4	C	901[B]	MFN	O3-C16-N2-C15
4	A	902[B]	MFN	C27-C28-C29-O10
6	A	922	PE4	C9-C10-O6-C11
6	D	920	PE4	O1-C1-C2-O2
4	A	902[A]	MFN	C25-C26-C27-C28
6	D	921	PE4	C16-C15-O8-C14
6	D	921	PE4	C9-C10-O6-C11
4	A	900[A]	MFN	C14-C23-C24-O7
4	A	902[A]	MFN	C12-C15-N2-C16
4	A	900[A]	MFN	C22-C14-C23-C24
6	A	922	PE4	O2-C3-C4-O3
4	D	903	MFN	C17-C18-C19-N3
4	A	902[B]	MFN	N2-C16-C17-C18
6	D	921	PE4	C12-C11-O6-C10
6	A	922	PE4	C4-C3-O2-C2
4	A	902[A]	MFN	N2-C16-C17-C18

There are no ring outliers.

14 monomers are involved in 88 short contacts:

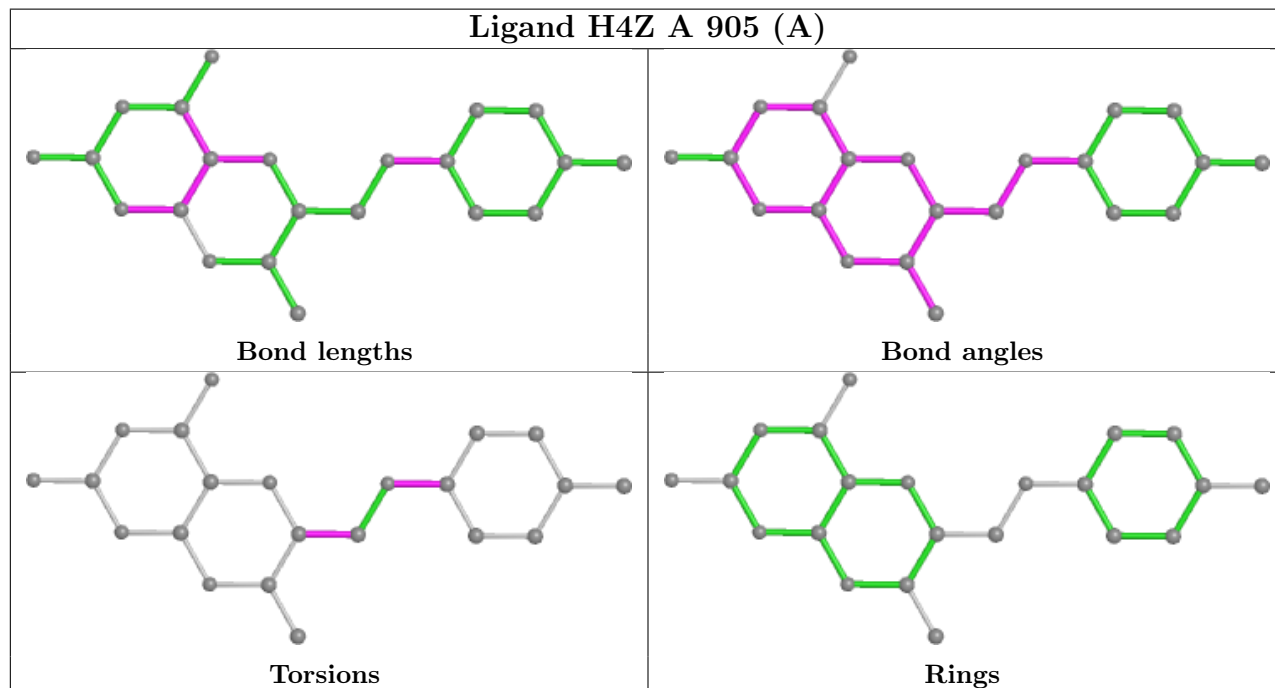
Mol	Chain	Res	Type	Clashes	Symm-Clashes
5	A	905[A]	H4Z	2	0
7	C	3792	PE3	4	0

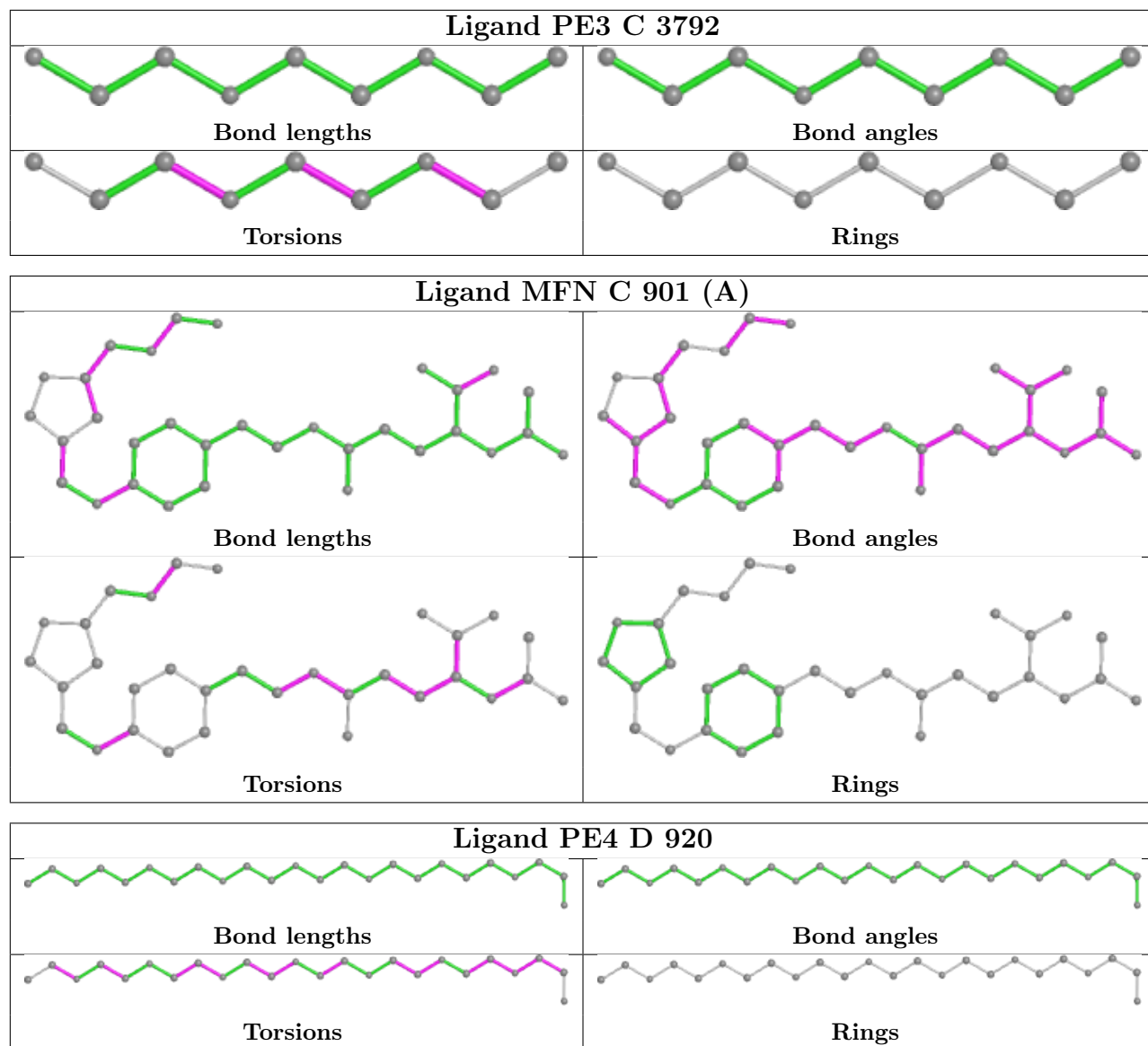
Continued on next page...

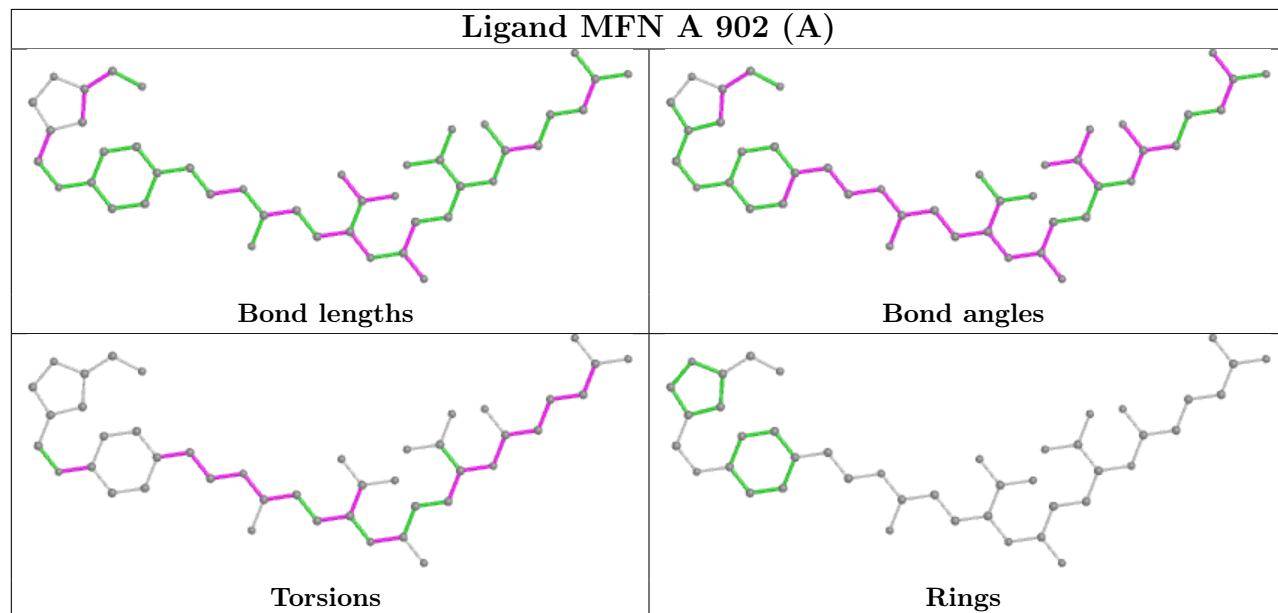
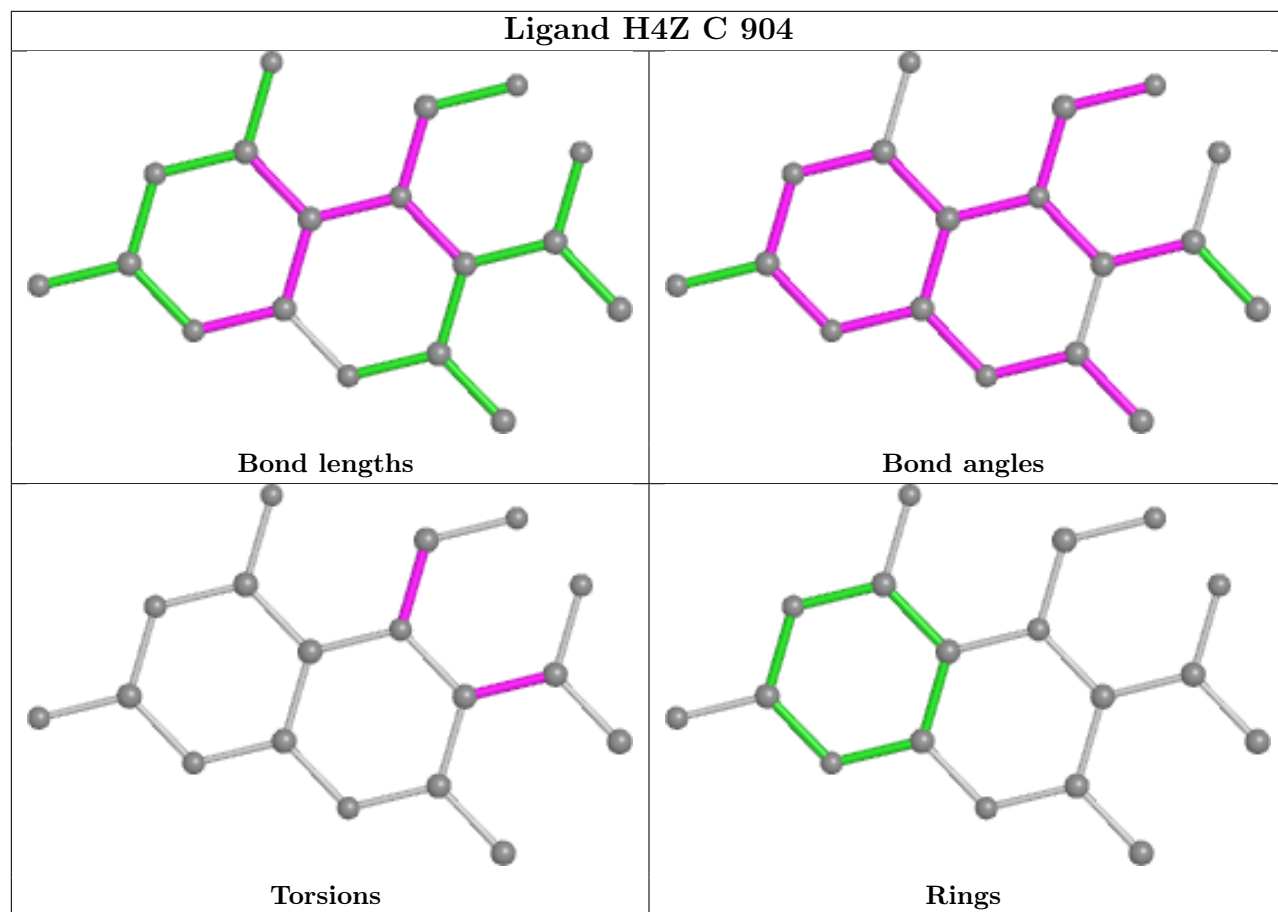
Continued from previous page...

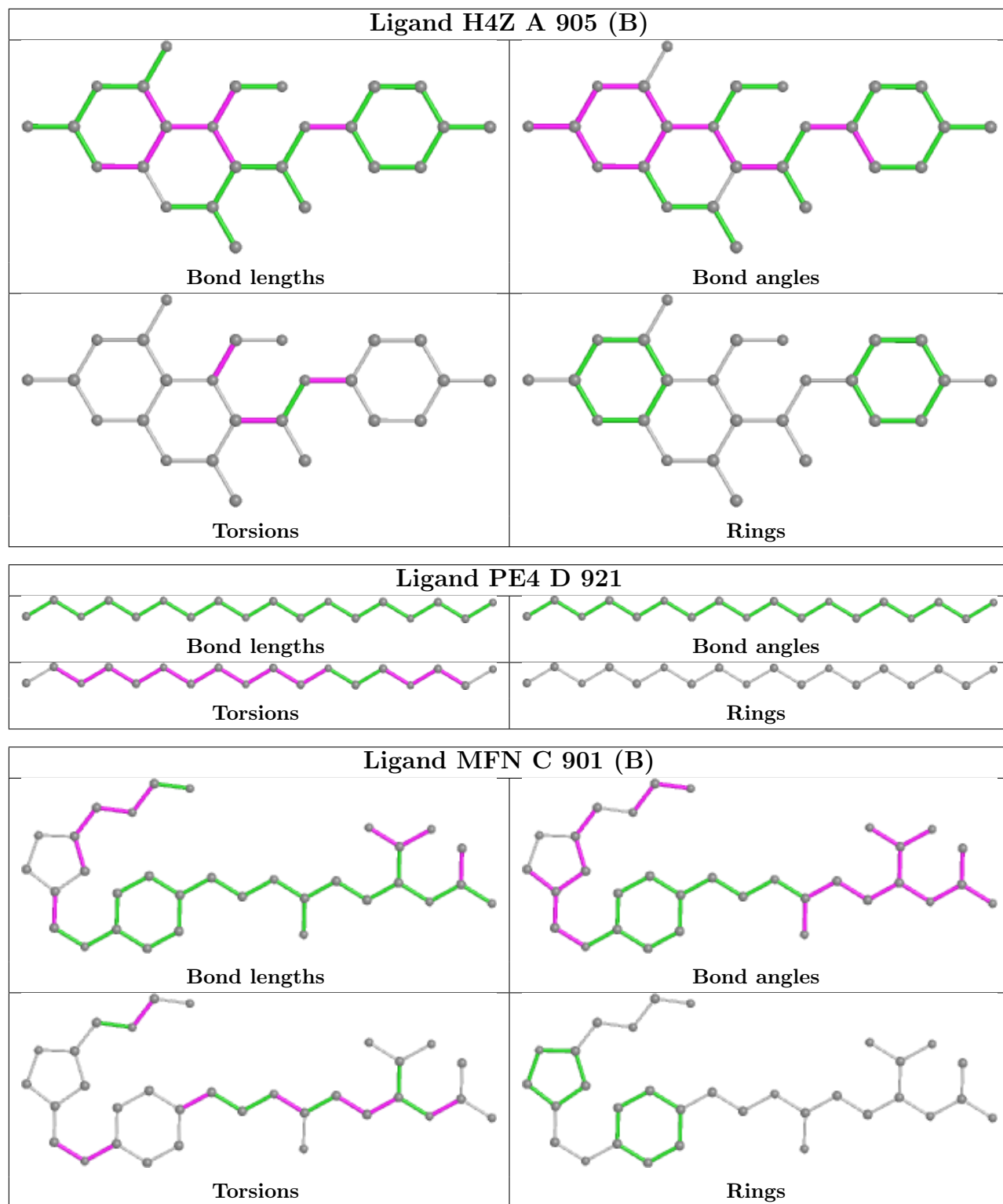
Mol	Chain	Res	Type	Clashes	Symm-Clashes
4	C	901[A]	MFN	5	0
6	D	920	PE4	1	0
5	C	904	H4Z	5	0
4	A	902[A]	MFN	10	0
5	A	905[B]	H4Z	7	0
6	D	921	PE4	5	0
4	C	901[B]	MFN	6	0
4	A	900[A]	MFN	2	0
4	A	902[B]	MFN	11	0
4	D	903	MFN	3	0
6	A	922	PE4	25	0
4	A	900[B]	MFN	2	0

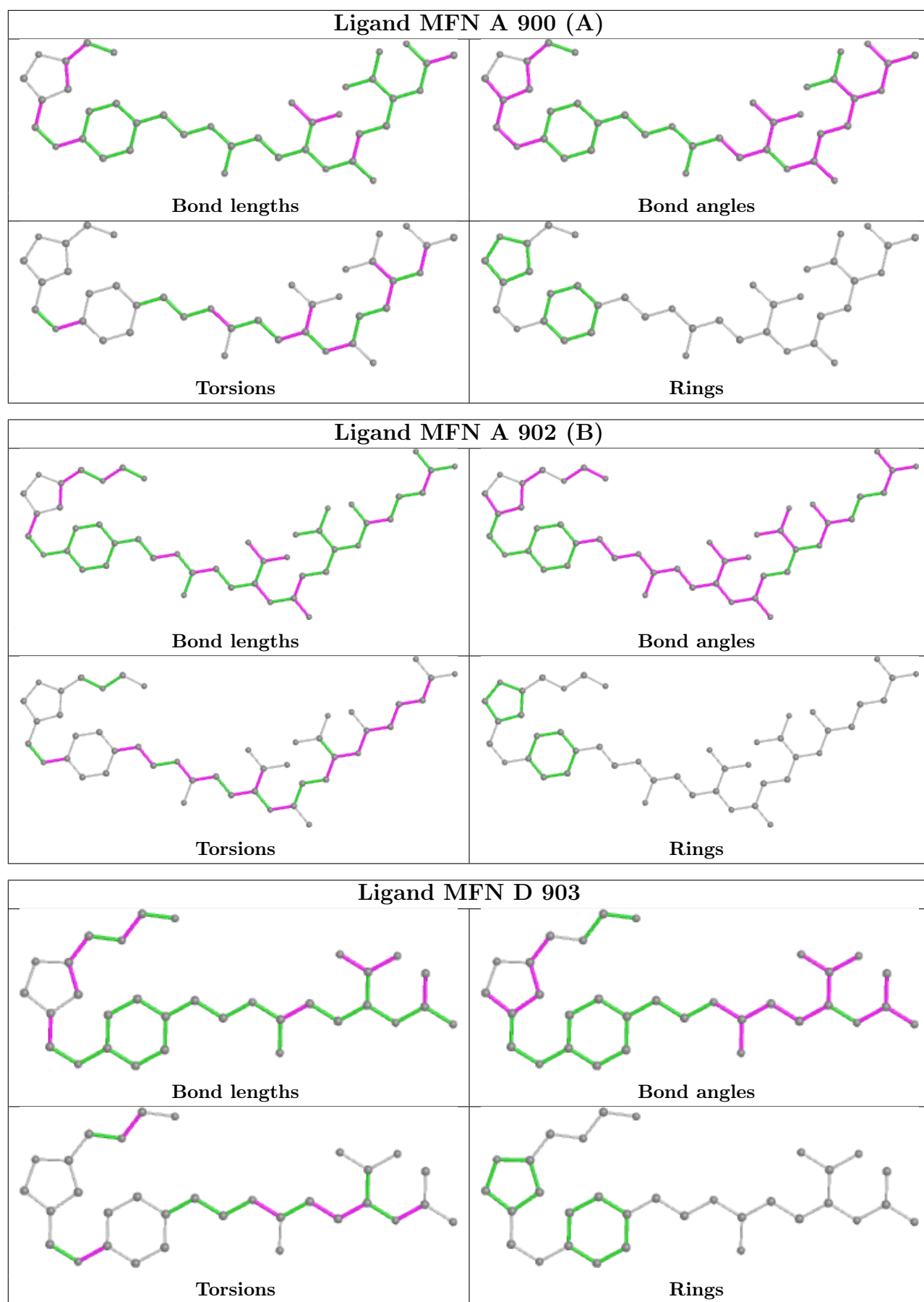
The following is a two-dimensional graphical depiction of Mogul quality analysis of bond lengths, bond angles, torsion angles, and ring geometry for all instances of the Ligand of Interest. In addition, ligands with molecular weight > 250 and outliers as shown on the validation Tables will also be included. For torsion angles, if less than 5% of the Mogul distribution of torsion angles is within 10 degrees of the torsion angle in question, then that torsion angle is considered an outlier. Any bond that is central to one or more torsion angles identified as an outlier by Mogul will be highlighted in the graph. For rings, the root-mean-square deviation (RMSD) between the ring in question and similar rings identified by Mogul is calculated over all ring torsion angles. If the average RMSD is greater than 60 degrees and the minimal RMSD between the ring in question and any Mogul-identified rings is also greater than 60 degrees, then that ring is considered an outlier. The outliers are highlighted in purple. The color gray indicates Mogul did not find sufficient equivalents in the CSD to analyse the geometry.

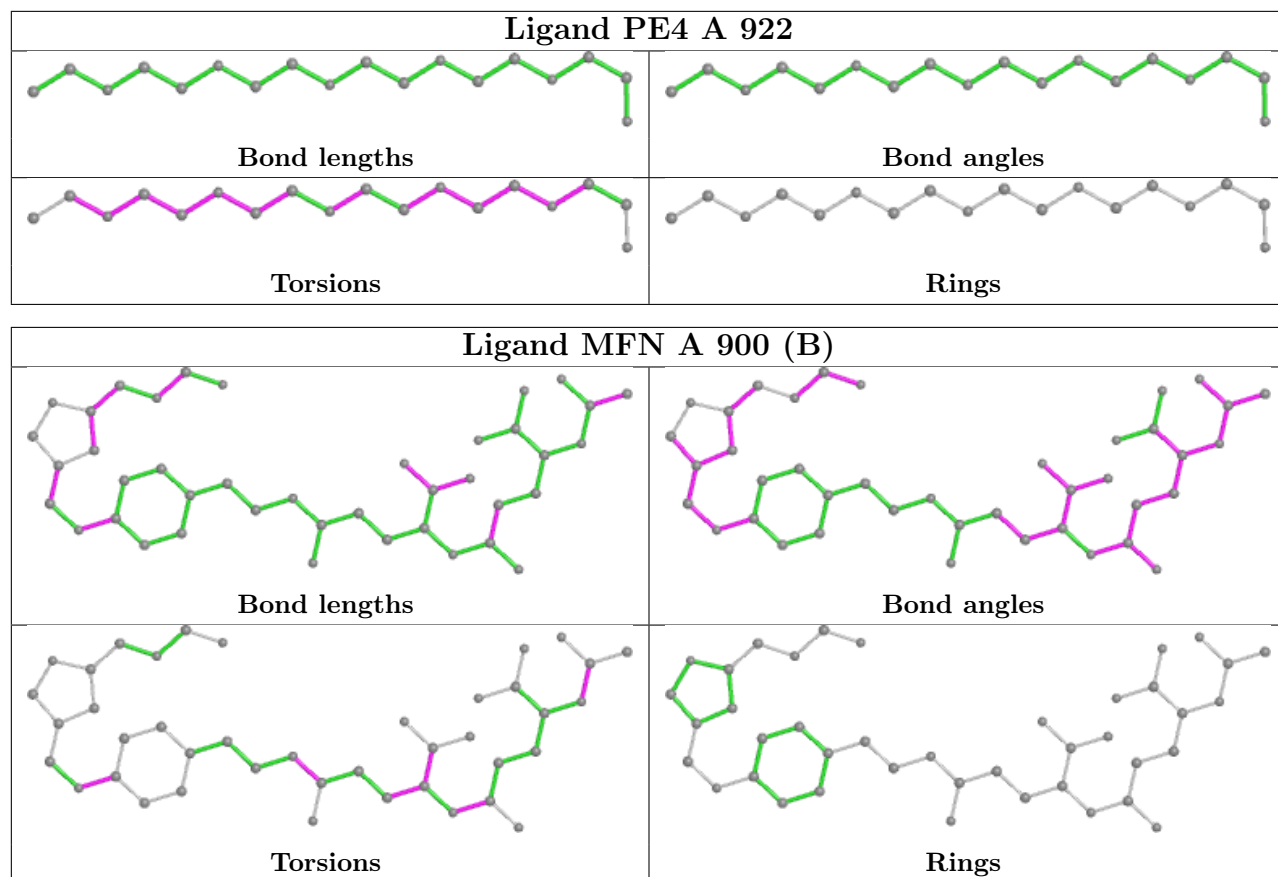












5.7 Other polymers [i](#)

There are no such residues in this entry.

5.8 Polymer linkage issues [i](#)

There are no chain breaks in this entry.

6 Fit of model and data

6.1 Protein, DNA and RNA chains

In the following table, the column labelled ‘#RSRZ > 2’ contains the number (and percentage) of RSRZ outliers, followed by percent RSRZ outliers for the chain as percentile scores relative to all X-ray entries and entries of similar resolution. The OWAB column contains the minimum, median, 95th percentile and maximum values of the occupancy-weighted average B-factor per residue. The column labelled ‘Q < 0.9’ lists the number of (and percentage) of residues with an average occupancy less than 0.9.

Mol	Chain	Analysed	<RSRZ>	#RSRZ>2	OWAB(Å ²)	Q<0.9
1	A	296/296 (100%)	0.06	7 (2%) 59 57	19, 34, 48, 59	0
1	B	296/296 (100%)	0.16	10 (3%) 45 44	19, 34, 47, 58	0
1	C	296/296 (100%)	-0.21	2 (0%) 87 87	11, 27, 41, 49	0
2	D	295/296 (99%)	-0.14	2 (0%) 87 87	10, 27, 41, 49	0
All	All	1183/1184 (99%)	-0.03	21 (1%) 68 66	10, 30, 45, 59	0

All (21) RSRZ outliers are listed below:

Mol	Chain	Res	Type	RSRZ
1	B	285	LEU	6.1
1	B	232[A]	GLU	4.3
1	A	217[A]	ASP	3.8
1	A	238[A]	GLU	3.0
1	A	233	ASP	2.8
1	B	138	ASP	2.7
1	A	218	PHE	2.7
1	C	233	ASP	2.7
1	B	284	LYS	2.5
2	D	285	LEU	2.4
1	B	60	TYR	2.4
1	B	233	ASP	2.3
1	A	282	GLY	2.3
1	C	218	PHE	2.2
1	A	164	VAL	2.2
1	B	212	GLY	2.2
1	A	254[A]	GLU	2.1
1	B	296	PHE	2.1
1	B	112	ALA	2.1
1	B	238	GLU	2.0
2	D	286	GLY	2.0

6.2 Non-standard residues in protein, DNA, RNA chains [i](#)

In the following table, the Atoms column lists the number of modelled atoms in the group and the number defined in the chemical component dictionary. The B-factors column lists the minimum, median, 95th percentile and maximum values of B factors of atoms in the group. The column labelled 'Q< 0.9' lists the number of atoms with occupancy less than 0.9.

Mol	Type	Chain	Res	Atoms	RSCC	RSR	B-factors(Å ²)	Q<0.9
2	CSO	D	58	7/8	0.90	0.10	19,28,29,39	0

6.3 Carbohydrates [i](#)

There are no monosaccharides in this entry.

6.4 Ligands [i](#)

In the following table, the Atoms column lists the number of modelled atoms in the group and the number defined in the chemical component dictionary. The B-factors column lists the minimum, median, 95th percentile and maximum values of B factors of atoms in the group. The column labelled 'Q< 0.9' lists the number of atoms with occupancy less than 0.9.

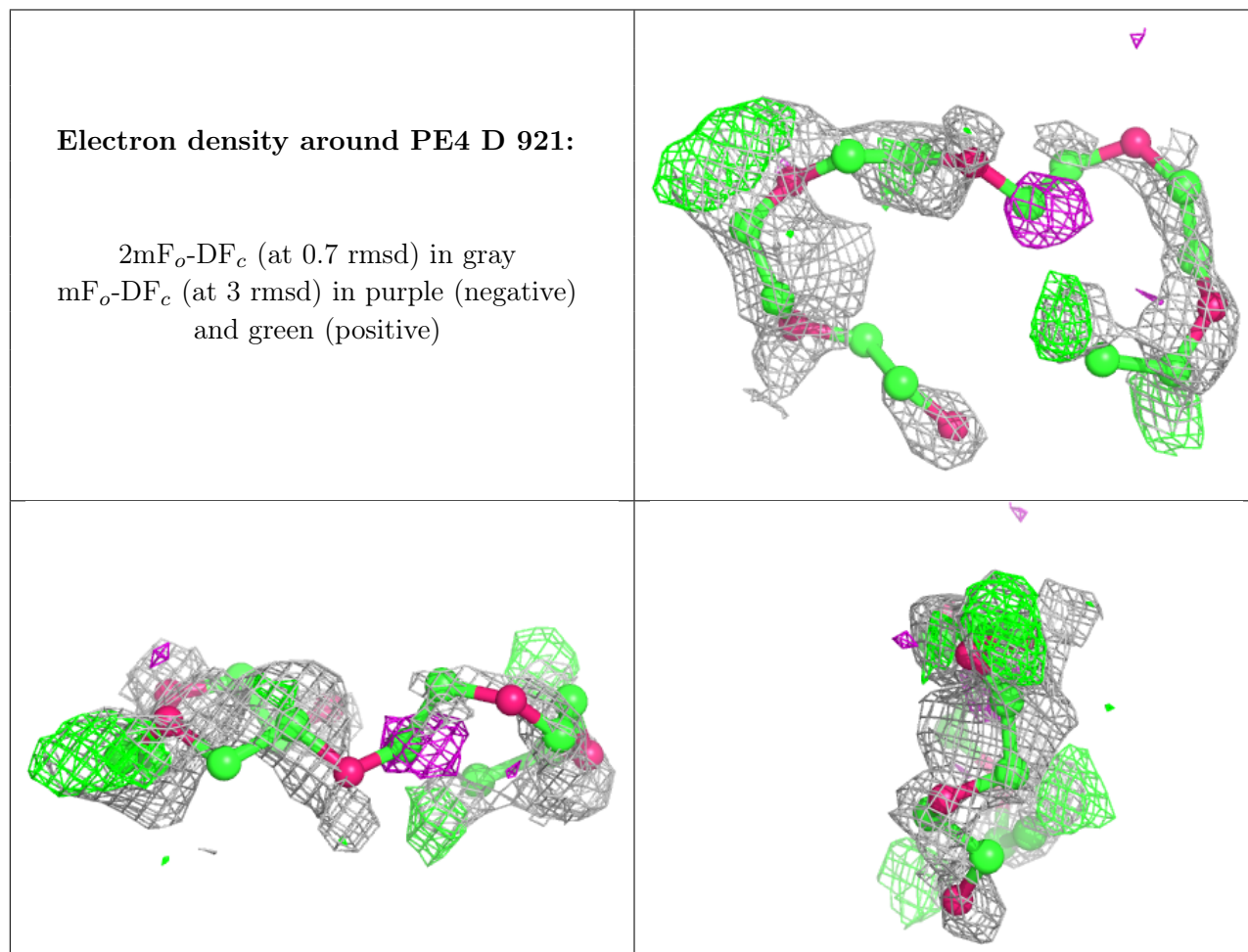
Mol	Type	Chain	Res	Atoms	RSCC	RSR	B-factors(Å ²)	Q<0.9
6	PE4	D	921	18/24	0.42	0.45	85,95,102,102	0
5	H4Z	A	905[B]	25/55	0.60	0.42	46,52,64,65	25
5	H4Z	A	905[A]	22/55	0.60	0.42	23,43,57,59	22
6	PE4	D	920	24/24	0.69	0.25	36,78,88,90	0
5	H4Z	C	904	18/55	0.71	0.23	24,53,62,63	0
4	MFN	A	902[B]	46/55	0.72	0.33	51,77,102,104	46
4	MFN	A	902[A]	44/55	0.72	0.33	35,88,112,115	44
4	MFN	A	900[B]	41/55	0.76	0.22	25,53,81,82	41
4	MFN	A	900[A]	39/55	0.76	0.22	38,53,90,91	39
4	MFN	C	901[B]	32/55	0.79	0.26	65,83,87,88	32
4	MFN	C	901[A]	32/55	0.79	0.26	25,55,61,62	32
7	PE3	C	3792	9/43	0.79	0.35	57,63,71,77	0
6	PE4	A	922	18/24	0.85	0.27	13,51,62,64	0
4	MFN	D	903	32/55	0.87	0.13	29,38,59,63	0
3	K	B	504	1/1	0.88	0.09	58,58,58,58	0
3	K	B	319	1/1	0.97	0.04	38,38,38,38	0
3	K	B	505	1/1	0.97	0.14	38,38,38,38	0
3	K	C	506	1/1	0.98	0.08	24,24,24,24	0
3	K	B	322	1/1	0.98	0.04	27,27,27,27	0
3	K	C	306	1/1	0.98	0.05	28,28,28,28	0
3	K	C	309	1/1	0.99	0.03	24,24,24,24	0

Continued on next page...

Continued from previous page...

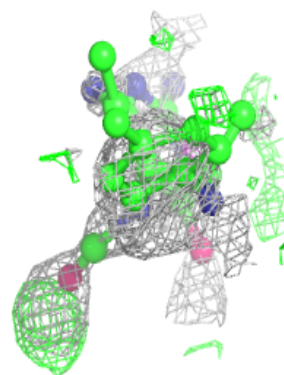
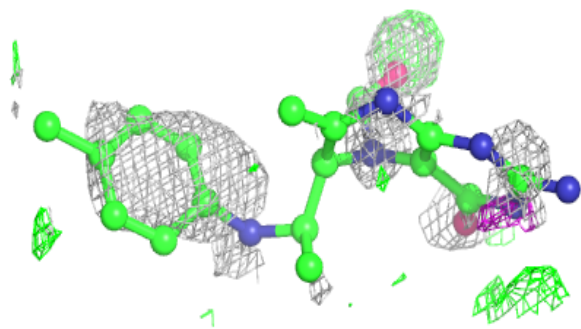
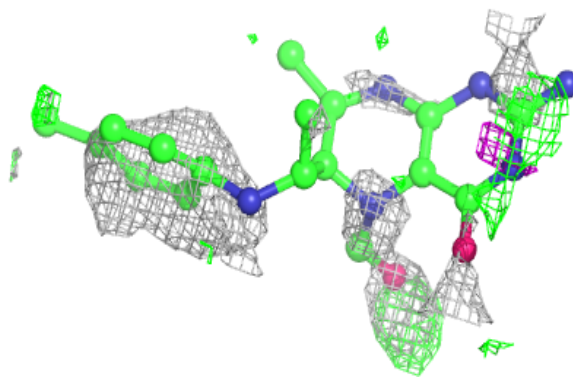
Mol	Type	Chain	Res	Atoms	RSCC	RSR	B-factors(Å ²)	Q<0.9
3	K	A	312	1/1	0.99	0.03	29,29,29,29	0
3	K	D	500	1/1	0.99	0.02	18,18,18,18	0
3	K	D	501	1/1	0.99	0.03	18,18,18,18	0
3	K	D	502	1/1	0.99	0.03	28,28,28,28	0
3	K	D	503	1/1	0.99	0.04	29,29,29,29	0
3	K	A	313	1/1	0.99	0.04	27,27,27,27	0
3	K	A	315	1/1	0.99	0.04	25,25,25,25	0
3	K	A	316	1/1	0.99	0.06	27,27,27,27	0
3	K	B	317	1/1	0.99	0.03	30,30,30,30	0
3	K	C	303	1/1	1.00	0.02	24,24,24,24	0

The following is a graphical depiction of the model fit to experimental electron density of all instances of the Ligand of Interest. In addition, ligands with molecular weight > 250 and outliers as shown on the geometry validation Tables will also be included. Each fit is shown from different orientation to approximate a three-dimensional view.

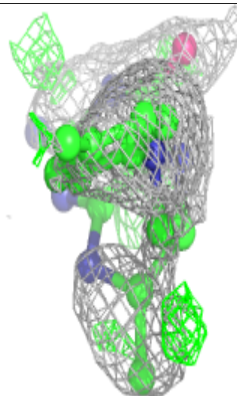
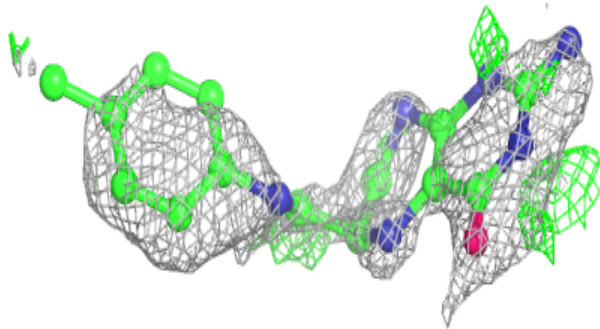
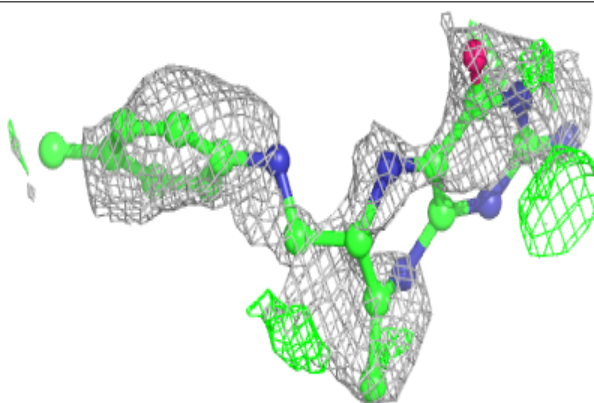


Electron density around H4Z A 905 (B):

$2mF_o-DF_c$ (at 0.7 rmsd) in gray
 mF_o-DF_c (at 3 rmsd) in purple (negative)
and green (positive)

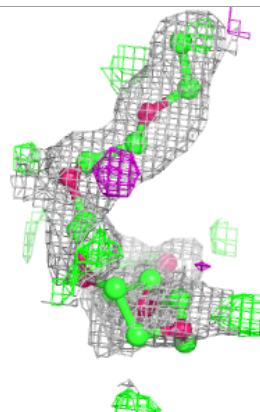
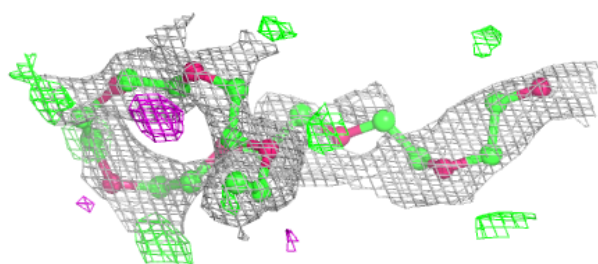
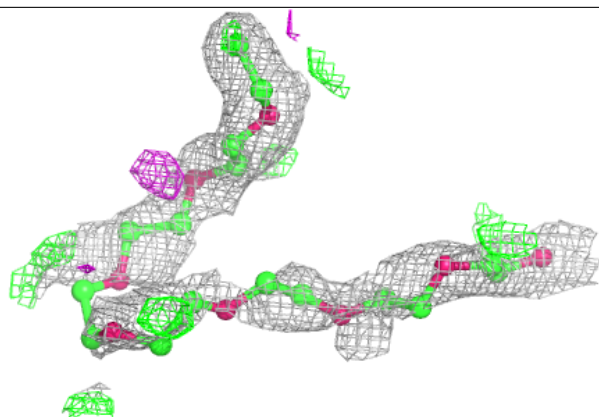
**Electron density around H4Z A 905 (A):**

$2mF_o-DF_c$ (at 0.7 rmsd) in gray
 mF_o-DF_c (at 3 rmsd) in purple (negative)
and green (positive)

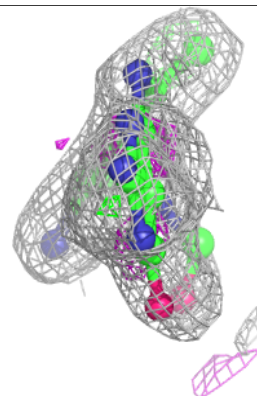
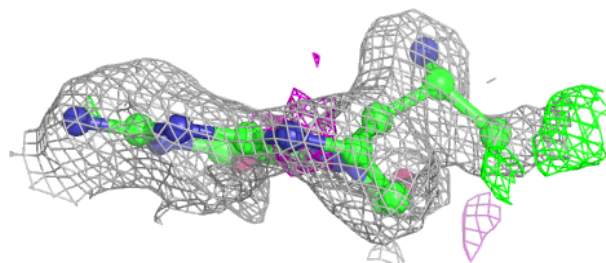
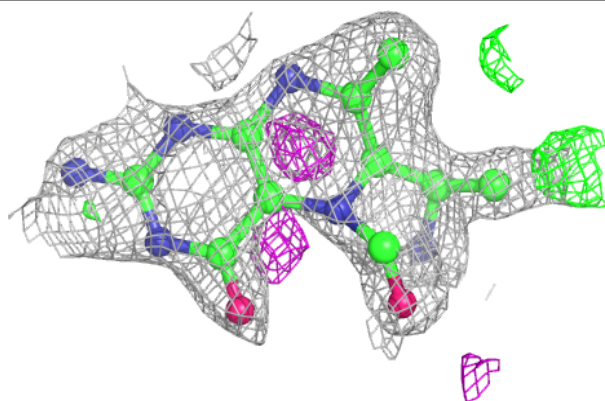


Electron density around PE4 D 920:

$2mF_o-DF_c$ (at 0.7 rmsd) in gray
 mF_o-DF_c (at 3 rmsd) in purple (negative)
and green (positive)

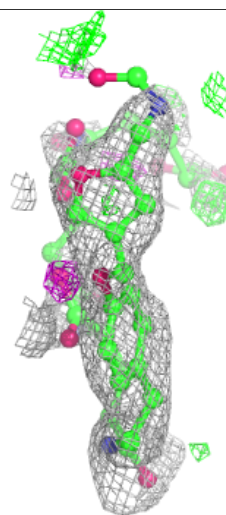
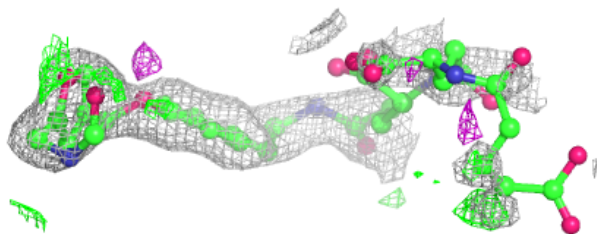
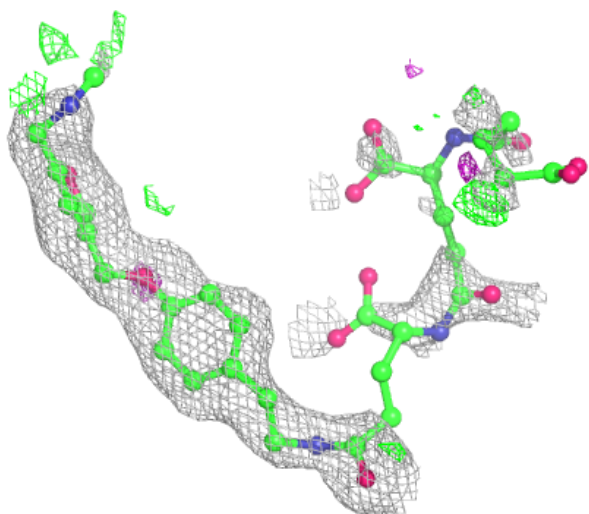
**Electron density around H4Z C 904:**

$2mF_o-DF_c$ (at 0.7 rmsd) in gray
 mF_o-DF_c (at 3 rmsd) in purple (negative)
and green (positive)



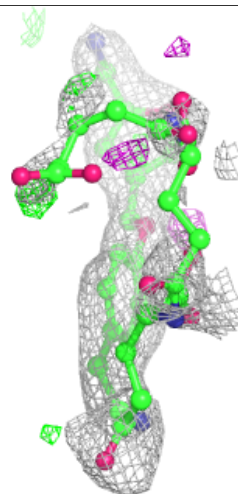
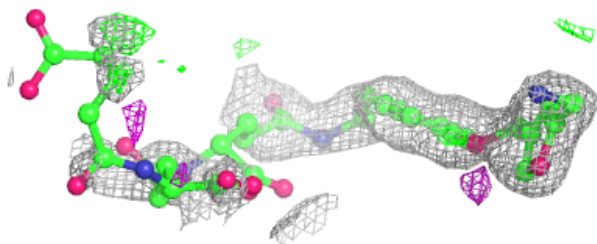
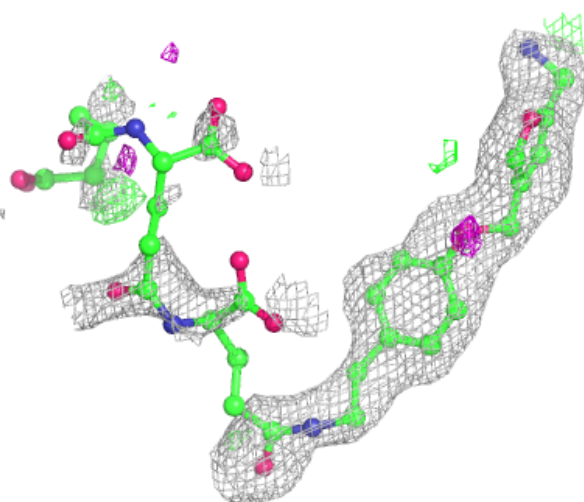
Electron density around MFN A 902 (B):

$2mF_o-DF_c$ (at 0.7 rmsd) in gray
 mF_o-DF_c (at 3 rmsd) in purple (negative)
and green (positive)



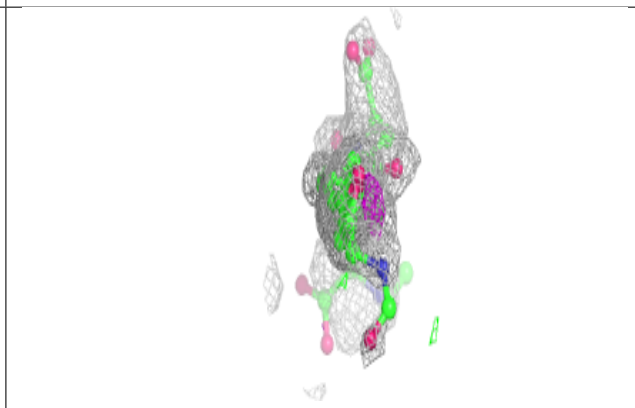
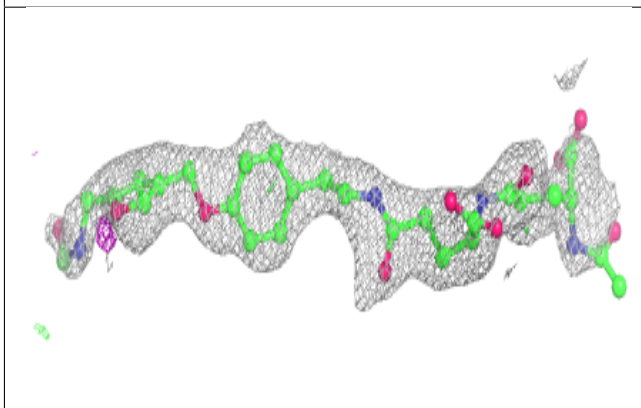
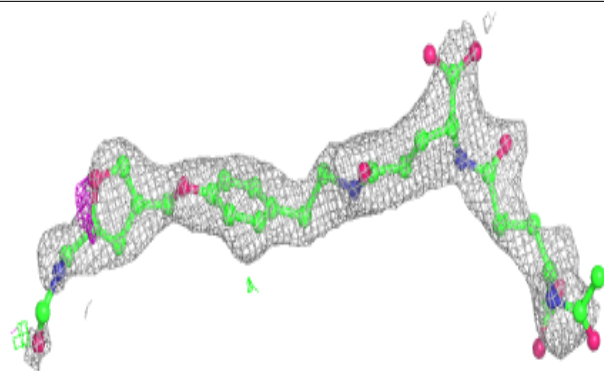
Electron density around MFN A 902 (A):

$2mF_o-DF_c$ (at 0.7 rmsd) in gray
 mF_o-DF_c (at 3 rmsd) in purple (negative)
and green (positive)

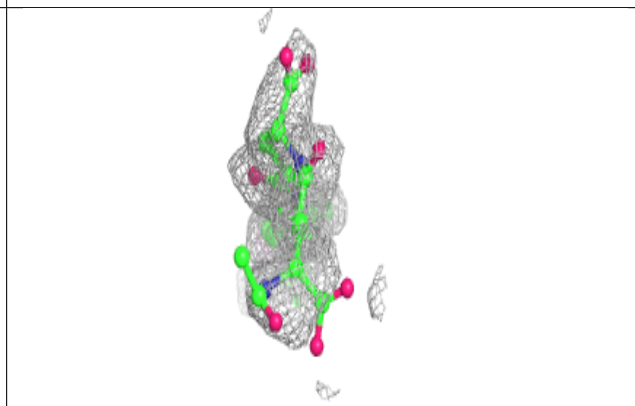
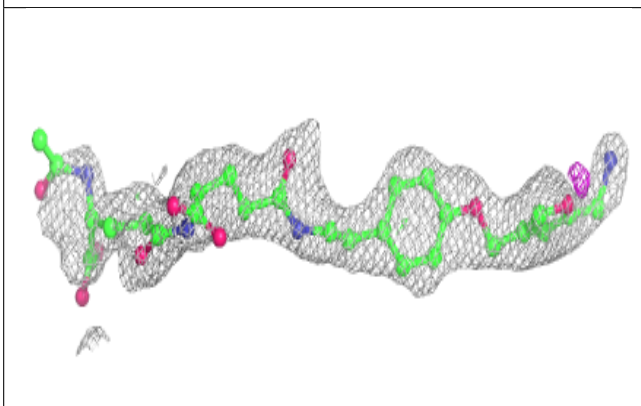
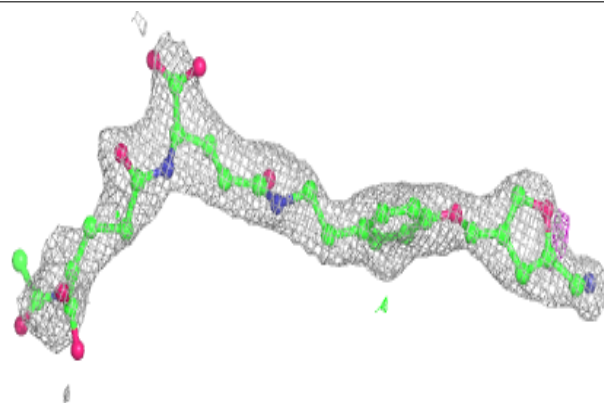


Electron density around MFN A 900 (B):

$2mF_o-DF_c$ (at 0.7 rmsd) in gray
 mF_o-DF_c (at 3 rmsd) in purple (negative)
and green (positive)

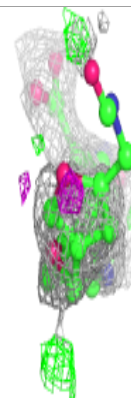
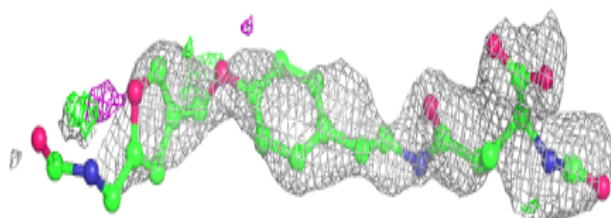
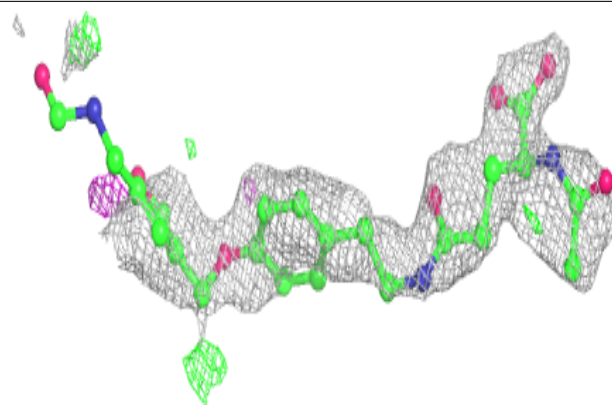
**Electron density around MFN A 900 (A):**

$2mF_o-DF_c$ (at 0.7 rmsd) in gray
 mF_o-DF_c (at 3 rmsd) in purple (negative)
and green (positive)

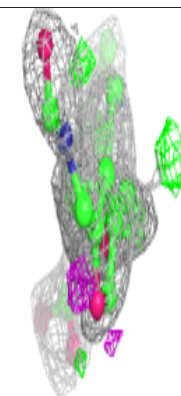
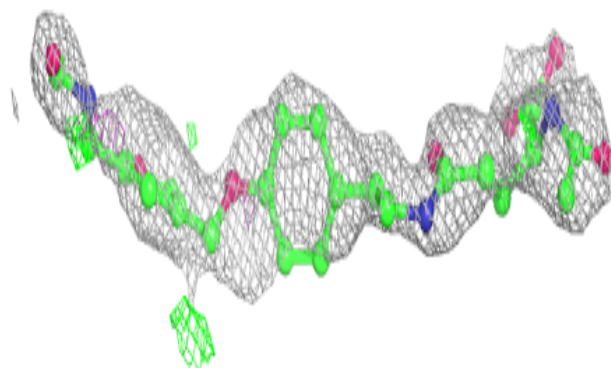
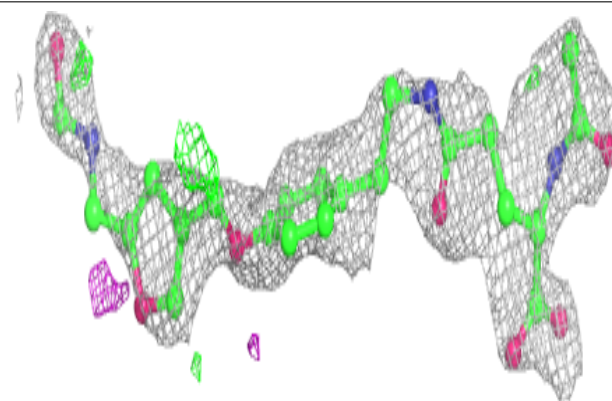


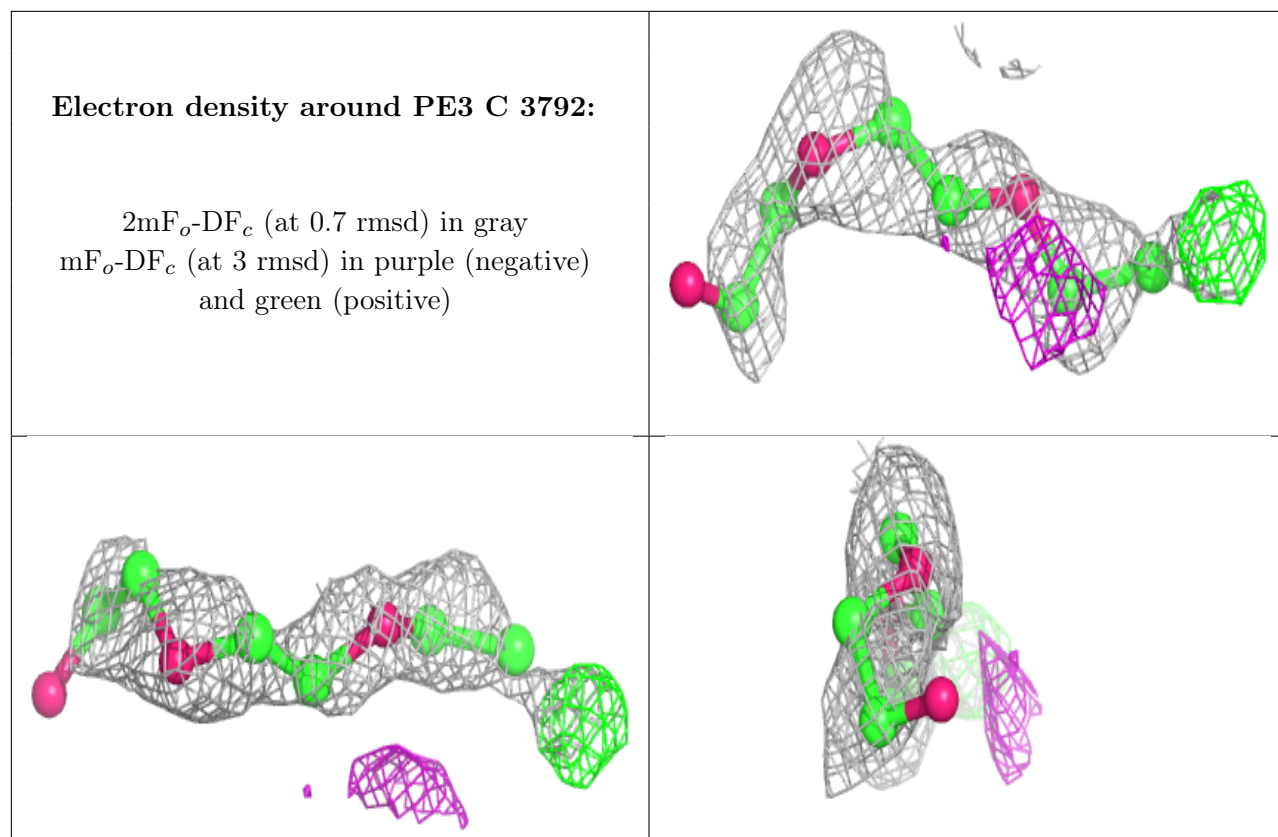
Electron density around MFN C 901 (B):

$2mF_o-DF_c$ (at 0.7 rmsd) in gray
 mF_o-DF_c (at 3 rmsd) in purple (negative)
and green (positive)

**Electron density around MFN C 901 (A):**

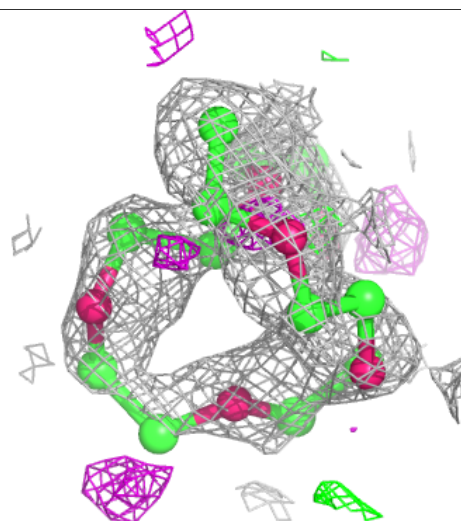
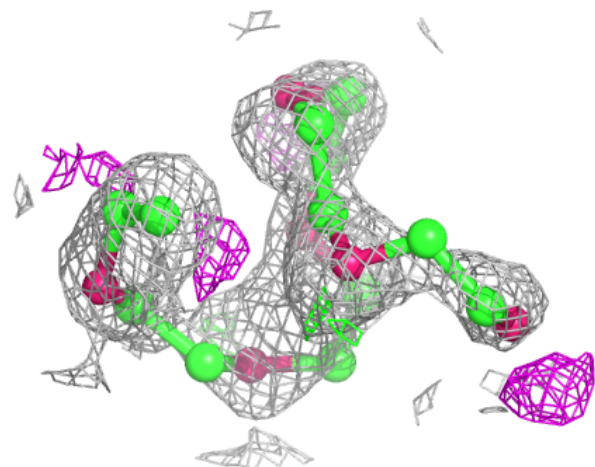
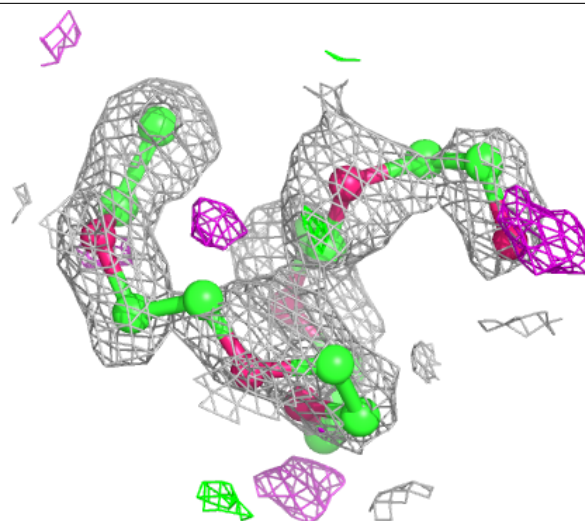
$2mF_o-DF_c$ (at 0.7 rmsd) in gray
 mF_o-DF_c (at 3 rmsd) in purple (negative)
and green (positive)

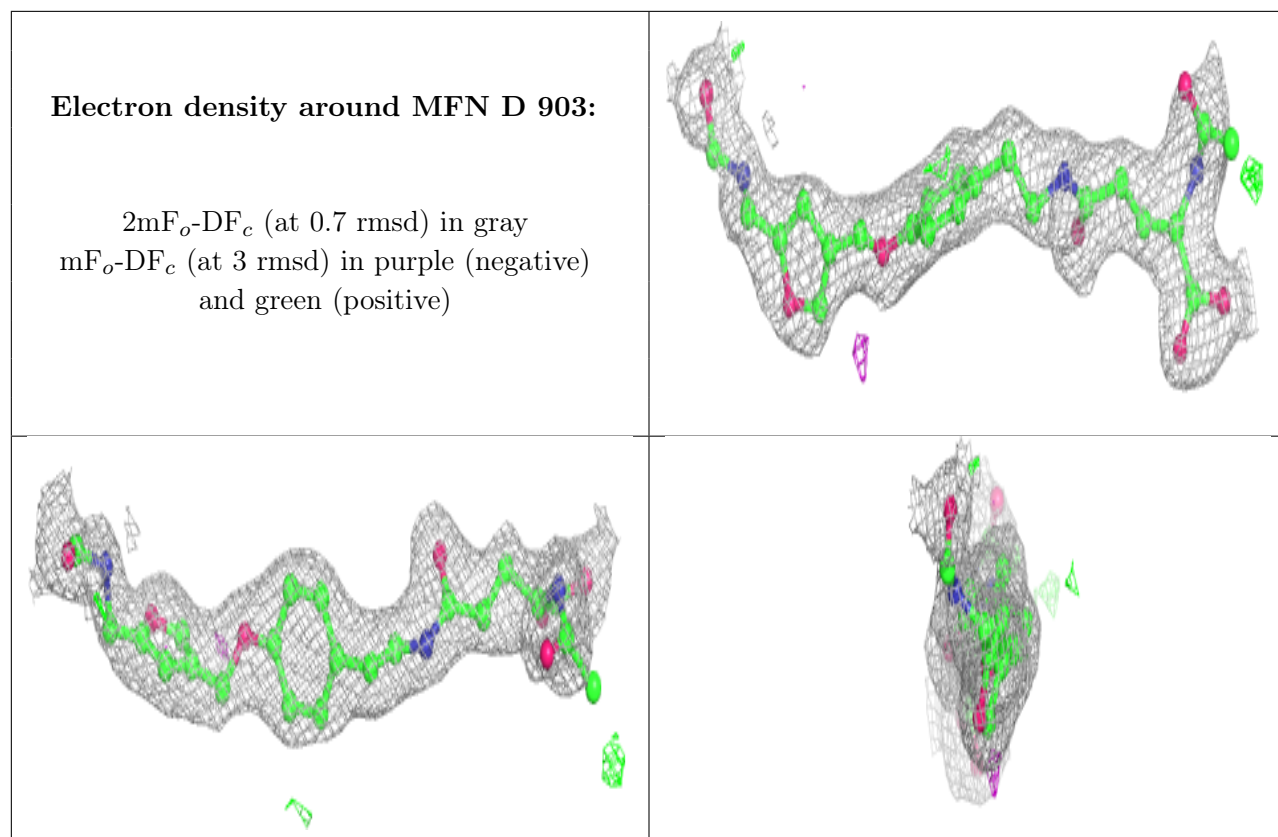




Electron density around PE4 A 922:

$2mF_o-DF_c$ (at 0.7 rmsd) in gray
 mF_o-DF_c (at 3 rmsd) in purple (negative)
and green (positive)





6.5 Other polymers [i](#)

There are no such residues in this entry.