



Full wwPDB X-ray Structure Validation Report ⓘ

Oct 29, 2024 – 01:50 pm GMT

PDB ID : 9FIP
Title : Structure-guided discovery of selective USP7 inhibitors with in vivo activity
Authors : Baker, L.M.; Murray, J.; Hubbard, R.E.; Whitehead, N.
Deposited on : 2024-05-29
Resolution : 3.06 Å(reported)

This is a Full wwPDB X-ray Structure Validation Report for a publicly released PDB entry.

We welcome your comments at validation@mail.wwpdb.org

A user guide is available at

<https://www.wwpdb.org/validation/2017/XrayValidationReportHelp>

with specific help available everywhere you see the ⓘ symbol.

The types of validation reports are described at

<http://www.wwpdb.org/validation/2017/FAQs#types>.

The following versions of software and data (see [references ⓘ](#)) were used in the production of this report:

MolProbity : 4.02b-467
Mogul : 1.8.4, CSD as541be (2020)
Xtriage (Phenix) : 1.13
EDS : 3.0
buster-report : 1.1.7 (2018)
Percentile statistics : 20231227.v01 (using entries in the PDB archive December 27th 2023)
CCP4 : 9.0.003 (Gargrove)
Density-Fitness : 1.0.11
Ideal geometry (proteins) : Engh & Huber (2001)
Ideal geometry (DNA, RNA) : Parkinson et al. (1996)
Validation Pipeline (wwPDB-VP) : 2.39

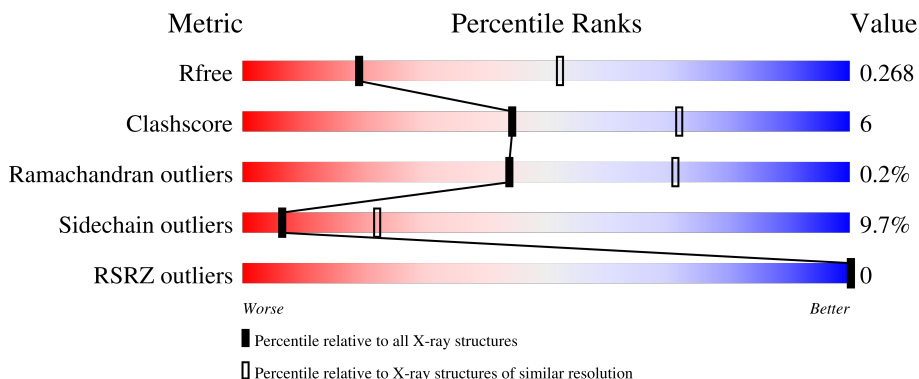
1 Overall quality at a glance

The following experimental techniques were used to determine the structure:

X-RAY DIFFRACTION

The reported resolution of this entry is 3.06 Å.

Percentile scores (ranging between 0-100) for global validation metrics of the entry are shown in the following graphic. The table shows the number of entries on which the scores are based.



Metric	Whole archive (#Entries)	Similar resolution (#Entries, resolution range(Å))
R_{free}	164625	2258 (3.10-3.02)
Clashscore	180529	2399 (3.10-3.02)
Ramachandran outliers	177936	2269 (3.10-3.02)
Sidechain outliers	177891	2268 (3.10-3.02)
RSRZ outliers	164620	2258 (3.10-3.02)

The table below summarises the geometric issues observed across the polymeric chains and their fit to the electron density. The red, orange, yellow and green segments of the lower bar indicate the fraction of residues that contain outliers for ≥ 3 , 2, 1 and 0 types of geometric quality criteria respectively. A grey segment represents the fraction of residues that are not modelled. The numeric value for each fraction is indicated below the corresponding segment, with a dot representing fractions $\leq 5\%$. The upper red bar (where present) indicates the fraction of residues that have poor fit to the electron density. The numeric value is given above the bar.

Mol	Chain	Length	Quality of chain
1	A	355	 73% 17% • 7%
1	B	355	 72% 20% • 5%

2 Entry composition [i](#)

There are 3 unique types of molecules in this entry. The entry contains 10875 atoms, of which 5385 are hydrogens and 0 are deuteriums.

In the tables below, the ZeroOcc column contains the number of atoms modelled with zero occupancy, the AltConf column contains the number of residues with at least one atom in alternate conformation and the Trace column contains the number of residues modelled with at most 2 atoms.

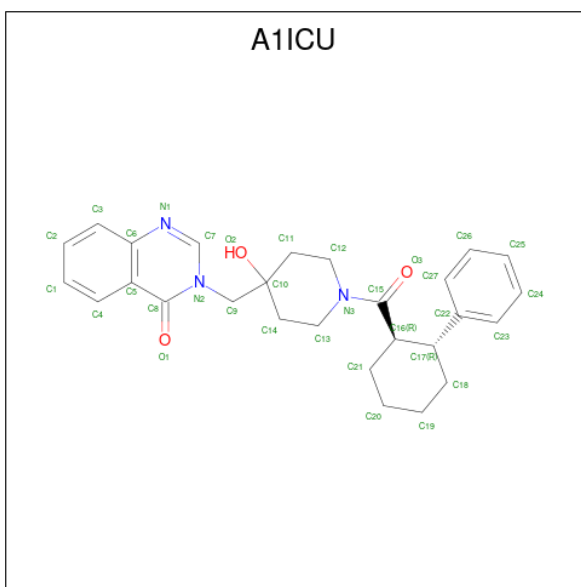
- Molecule 1 is a protein called Ubiquitin carboxyl-terminal hydrolase 7.

Mol	Chain	Residues	Atoms					ZeroOcc	AltConf	Trace	
			Total	C	H	N	O				S
1	A	330	5323	1701	2641	453	513	15	73	0	0
1	B	336	5410	1727	2682	466	519	16	78	0	0

There are 2 discrepancies between the modelled and reference sequences:

Chain	Residue	Modelled	Actual	Comment	Reference
A	206	GLY	-	expression tag	UNP Q93009
B	206	GLY	-	expression tag	UNP Q93009

- Molecule 2 is 3-[[4-oxidanyl-1-[(1 {R},2 {R})-2-phenylcyclohexyl]carbonyl-piperidin-4-yl]methyl]quinazolin-4-one (three-letter code: A1ICU) (formula: C₂₇H₃₁N₃O₃) (labeled as "Ligand of Interest" by depositor).



Mol	Chain	Residues	Atoms					ZeroOcc	AltConf
2	A	1	Total	C	H	N	O	0	0
			64	27	31	3	3		
2	B	1	Total	C	H	N	O	0	0
			64	27	31	3	3		

- Molecule 3 is water.

Mol	Chain	Residues	Atoms		ZeroOcc	AltConf
3	A	6	Total	O	0	0
			6	6		
3	B	8	Total	O	0	0
			8	8		

4 Data and refinement statistics i

Property	Value	Source
Space group	P 1 21 1	Depositor
Cell constants a, b, c, α , β , γ	75.05Å 68.28Å 77.66Å 90.00° 92.00° 90.00°	Depositor
Resolution (Å)	77.61 – 3.06 77.61 – 3.06	Depositor EDS
% Data completeness (in resolution range)	96.6 (77.61-3.06) 96.6 (77.61-3.06)	Depositor EDS
R_{merge}	0.11	Depositor
R_{sym}	(Not available)	Depositor
$\langle I/\sigma(I) \rangle$ ¹	2.14 (at 3.07Å)	Xtrriage
Refinement program	REFMAC 5.8.0425	Depositor
R, R_{free}	0.169 , 0.264 0.169 , 0.268	Depositor DCC
R_{free} test set	731 reflections (5.04%)	wwPDB-VP
Wilson B-factor (Å ²)	91.6	Xtrriage
Anisotropy	0.381	Xtrriage
Bulk solvent k_{sol} (e/Å ³), B_{sol} (Å ²)	0.38 , 68.0	EDS
L-test for twinning ²	$\langle L \rangle = 0.50$, $\langle L^2 \rangle = 0.33$	Xtrriage
Estimated twinning fraction	0.000 for l,k,-h 0.033 for h,-k,-l 0.012 for l,-k,h	Xtrriage
F_o, F_c correlation	0.96	EDS
Total number of atoms	10875	wwPDB-VP
Average B, all atoms (Å ²)	92.0	wwPDB-VP

Xtrriage's analysis on translational NCS is as follows: *The analyses of the Patterson function reveals a significant off-origin peak that is 27.21 % of the origin peak, indicating pseudo-translational symmetry. The chance of finding a peak of this or larger height randomly in a structure without pseudo-translational symmetry is equal to 2.2929e-03. The detected translational NCS is most likely also responsible for the elevated intensity ratio.*

¹Intensities estimated from amplitudes.

²Theoretical values of $\langle |L| \rangle$, $\langle L^2 \rangle$ for acentric reflections are 0.5, 0.333 respectively for untwinned datasets, and 0.375, 0.2 for perfectly twinned datasets.

5 Model quality [i](#)

5.1 Standard geometry [i](#)

Bond lengths and bond angles in the following residue types are not validated in this section: A1ICU

The Z score for a bond length (or angle) is the number of standard deviations the observed value is removed from the expected value. A bond length (or angle) with $|Z| > 5$ is considered an outlier worth inspection. RMSZ is the root-mean-square of all Z scores of the bond lengths (or angles).

Mol	Chain	Bond lengths		Bond angles	
		RMSZ	# Z >5	RMSZ	# Z >5
1	A	0.36	0/2737	0.81	3/3690 (0.1%)
1	B	0.38	0/2785	0.85	2/3754 (0.1%)
All	All	0.37	0/5522	0.83	5/7444 (0.1%)

Chiral center outliers are detected by calculating the chiral volume of a chiral center and verifying if the center is modelled as a planar moiety or with the opposite hand. A planarity outlier is detected by checking planarity of atoms in a peptide group, atoms in a mainchain group or atoms of a sidechain that are expected to be planar.

Mol	Chain	#Chirality outliers	#Planarity outliers
1	A	0	1

There are no bond length outliers.

All (5) bond angle outliers are listed below:

Mol	Chain	Res	Type	Atoms	Z	Observed($^{\circ}$)	Ideal($^{\circ}$)
1	B	428	PRO	N-CA-CB	-5.60	96.44	102.60
1	A	413	PRO	N-CA-C	-5.45	97.93	112.10
1	A	529	GLN	CB-CA-C	-5.27	99.86	110.40
1	A	428	PRO	N-CA-CB	-5.16	96.93	102.60
1	B	244	MET	CG-SD-CE	5.08	108.33	100.20

There are no chirality outliers.

All (1) planarity outliers are listed below:

Mol	Chain	Res	Type	Group
1	A	344	ARG	Sidechain

5.2 Too-close contacts [i](#)

In the following table, the Non-H and H(model) columns list the number of non-hydrogen atoms and hydrogen atoms in the chain respectively. The H(added) column lists the number of hydrogen atoms added and optimized by MolProbity. The Clashes column lists the number of clashes within the asymmetric unit, whereas Symm-Clashes lists symmetry-related clashes.

Mol	Chain	Non-H	H(model)	H(added)	Clashes	Symm-Clashes
1	A	2682	2641	2628	30	0
1	B	2728	2682	2665	35	3
2	A	33	31	0	2	0
2	B	33	31	0	2	0
3	A	6	0	0	0	0
3	B	8	0	0	0	0
All	All	5490	5385	5293	63	3

The all-atom clashscore is defined as the number of clashes found per 1000 atoms (including hydrogen atoms). The all-atom clashscore for this structure is 6.

All (63) close contacts within the same asymmetric unit are listed below, sorted by their clash magnitude.

Atom-1	Atom-2	Interatomic distance (Å)	Clash overlap (Å)
1:A:295:ASP:HB2	2:A:601:A1ICU:O2	1.82	0.78
1:A:375:GLY:HA2	1:A:378:LYS:HG3	1.78	0.65
1:B:413:PRO:HD2	1:B:419:ILE:HD11	1.79	0.64
1:A:256:VAL:HB	1:A:257:PRO:HD3	1.81	0.63
1:A:408:ARG:O	1:A:420:LYS:HA	2.03	0.58
1:A:537:PRO:O	1:A:541:VAL:HG23	2.04	0.58
1:B:465:TYR:OH	2:B:601:A1ICU:O3	2.17	0.57
1:B:407:MET:HB3	2:B:601:A1ICU:C4	2.36	0.55
1:A:320:ILE:HB	1:A:321:PRO:HD3	1.88	0.55
1:B:554:LYS:O	1:B:555:ARG:C	2.45	0.54
1:A:354:ILE:HG12	1:A:425:PHE:CD1	2.42	0.54
1:B:287:THR:O	1:B:290:SER:OG	2.23	0.54
1:A:465:TYR:OH	2:A:601:A1ICU:O3	2.16	0.52
1:B:301:ARG:HG3	1:B:305:ASP:OD2	2.10	0.52
1:B:352:LEU:O	1:B:407:MET:HG2	2.10	0.52
1:A:248:GLU:H	1:A:248:GLU:CD	2.14	0.51
1:A:465:TYR:HB2	1:B:460:ASN:HD21	1.75	0.51
1:B:277:LYS:HA	1:B:277:LYS:HE2	1.92	0.50
1:A:313:GLY:N	1:A:317:GLU:OE1	2.39	0.50
1:B:424:ARG:HA	1:B:498:TYR:O	2.12	0.50
1:A:408:ARG:NH1	1:A:423:ASP:O	2.45	0.49

Continued on next page...

Continued from previous page...

Atom-1	Atom-2	Interatomic distance (Å)	Clash overlap (Å)
1:A:373:LEU:HD12	1:A:389:ALA:HB3	1.93	0.49
1:B:375:GLY:O	1:B:378:LYS:HG3	2.13	0.49
1:B:259:ALA:HA	1:B:262:ARG:NH1	2.27	0.49
1:B:410:MET:HG2	1:B:421:ILE:HD11	1.96	0.48
1:A:234:PHE:CD1	1:A:471:PRO:HB3	2.48	0.48
1:A:448:TYR:HB3	1:A:518:TYR:HB3	1.95	0.48
1:B:256:VAL:HB	1:B:257:PRO:HD3	1.96	0.48
1:B:381:ALA:HB1	1:B:384:HIS:HB2	1.96	0.48
1:A:331:TYR:HA	1:A:341:SER:O	2.14	0.47
1:B:320:ILE:N	1:B:321:PRO:HD2	2.30	0.47
1:B:259:ALA:HB3	1:B:279:LEU:HD23	1.98	0.46
1:A:241:ALA:HA	1:A:316:VAL:HG21	1.97	0.46
1:A:228:LEU:C	1:A:228:LEU:HD23	2.37	0.46
1:A:305:ASP:O	1:A:309:ASN:ND2	2.49	0.45
1:B:411:TYR:O	1:B:418:ASN:HB3	2.16	0.45
1:A:426:GLU:HA	1:A:498:TYR:CD1	2.52	0.45
1:B:413:PRO:O	1:B:414:GLN:C	2.54	0.45
1:A:409:PHE:CE1	1:A:460:ASN:HB3	2.51	0.44
1:B:381:ALA:CB	1:B:384:HIS:HB2	2.47	0.44
1:B:448:TYR:HB3	1:B:518:TYR:HB3	2.00	0.44
1:A:457:SER:OG	1:A:511:THR:HA	2.18	0.44
1:A:491:GLU:HA	1:A:495:GLU:HG2	1.99	0.44
1:A:550:ILE:H	1:A:550:ILE:HG13	1.49	0.44
1:B:347:TYR:OH	1:B:398:LEU:HD23	2.17	0.44
1:B:269:HIS:NE2	1:B:533:ASP:OD1	2.47	0.43
1:A:492:GLU:HA	1:A:496:HIS:HD2	1.83	0.43
1:B:470:ASN:HB3	1:B:477:TRP:CD2	2.54	0.43
1:A:225:MET:HG3	1:A:299:LEU:HD11	1.99	0.42
1:A:463:GLY:O	1:B:461:HIS:HB2	2.18	0.42
1:B:259:ALA:O	1:B:263:VAL:HG23	2.19	0.42
1:B:248:GLU:H	1:B:248:GLU:CD	2.23	0.42
1:B:222:THR:HA	1:B:291:PHE:CD2	2.54	0.42
1:B:495:GLU:C	1:B:497:ASN:H	2.23	0.42
1:B:319:THR:HG22	1:B:323:LEU:HD12	2.02	0.42
1:A:410:MET:HB3	1:A:411:TYR:H	1.70	0.41
1:B:335:LYS:HA	1:B:335:LYS:HE2	2.03	0.41
1:A:360:ILE:HD11	1:A:404:LEU:HD13	2.03	0.41
1:B:301:ARG:NH1	1:B:304:LEU:HD12	2.36	0.41
1:A:334:CYS:SG	1:A:339:TYR:HB3	2.62	0.40
1:B:325:ARG:HA	1:B:347:TYR:O	2.21	0.40
1:B:459:ASP:HB2	1:B:463:GLY:HA2	2.02	0.40

Continued on next page...

Continued from previous page...

Atom-1	Atom-2	Interatomic distance (Å)	Clash overlap (Å)
1:B:512:ASN:ND2	1:B:512:ASN:N	2.69	0.40

All (3) symmetry-related close contacts are listed below. The label for Atom-2 includes the symmetry operator and encoded unit-cell translations to be applied.

Atom-1	Atom-2	Interatomic distance (Å)	Clash overlap (Å)
1:B:383:GLU:O	1:B:553:GLN:HE21[1_655]	1.38	0.22
1:B:383:GLU:O	1:B:553:GLN:NE2[1_655]	2.13	0.07
1:B:210:HIS:HD1	1:B:553:GLN:OE1[2_755]	1.56	0.04

5.3 Torsion angles [i](#)

5.3.1 Protein backbone [i](#)

In the following table, the Percentiles column shows the percent Ramachandran outliers of the chain as a percentile score with respect to all X-ray entries followed by that with respect to entries of similar resolution.

The Analysed column shows the number of residues for which the backbone conformation was analysed, and the total number of residues.

Mol	Chain	Analysed	Favoured	Allowed	Outliers	Percentiles	
1	A	324/355 (91%)	297 (92%)	26 (8%)	1 (0%)	37	64
1	B	330/355 (93%)	304 (92%)	26 (8%)	0	100	100
All	All	654/710 (92%)	601 (92%)	52 (8%)	1 (0%)	44	71

All (1) Ramachandran outliers are listed below:

Mol	Chain	Res	Type
1	A	413	PRO

5.3.2 Protein sidechains [i](#)

In the following table, the Percentiles column shows the percent sidechain outliers of the chain as a percentile score with respect to all X-ray entries followed by that with respect to entries of similar resolution.

The Analysed column shows the number of residues for which the sidechain conformation was analysed, and the total number of residues.

Mol	Chain	Analysed	Rotameric	Outliers	Percentiles	
1	A	298/321 (93%)	271 (91%)	27 (9%)	7	25
1	B	302/321 (94%)	271 (90%)	31 (10%)	6	20
All	All	600/642 (94%)	542 (90%)	58 (10%)	6	22

All (58) residues with a non-rotameric sidechain are listed below:

Mol	Chain	Res	Type
1	A	230	GLN
1	A	273	PRO
1	A	279	LEU
1	A	296	VAL
1	A	299	LEU
1	A	301	ARG
1	A	336	GLU
1	A	344	ARG
1	A	349	ASP
1	A	354	ILE
1	A	374	ASP
1	A	377	ASN
1	A	408	ARG
1	A	409	PHE
1	A	410	MET
1	A	414	GLN
1	A	428	PRO
1	A	460	ASN
1	A	469	LEU
1	A	470	ASN
1	A	483	ASP
1	A	487	ARG
1	A	495	GLU
1	A	540	LEU
1	A	546	GLU
1	A	550	ILE
1	A	554	LYS
1	B	227	SER
1	B	228	LEU
1	B	229	LEU
1	B	238	LEU
1	B	260	LEU
1	B	287	THR
1	B	293	GLN
1	B	299	LEU

Continued on next page...

Continued from previous page...

Mol	Chain	Res	Type
1	B	301	ARG
1	B	314	THR
1	B	336	GLU
1	B	346	ASP
1	B	349	ASP
1	B	360	ILE
1	B	402	LEU
1	B	407	MET
1	B	409	PHE
1	B	410	MET
1	B	411	TYR
1	B	428	PRO
1	B	454	LEU
1	B	457	SER
1	B	469	LEU
1	B	470	ASN
1	B	476	LYS
1	B	509	HIS
1	B	512	ASN
1	B	535	ASP
1	B	551	GLU
1	B	553	GLN
1	B	555	ARG

Sometimes sidechains can be flipped to improve hydrogen bonding and reduce clashes. All (13) such sidechains are listed below:

Mol	Chain	Res	Type
1	A	230	GLN
1	A	237	GLN
1	A	460	ASN
1	A	496	HIS
1	A	545	GLN
1	B	230	GLN
1	B	237	GLN
1	B	293	GLN
1	B	377	ASN
1	B	438	GLN
1	B	512	ASN
1	B	538	GLN
1	B	545	GLN

5.3.3 RNA [i](#)

There are no RNA molecules in this entry.

5.4 Non-standard residues in protein, DNA, RNA chains [i](#)

There are no non-standard protein/DNA/RNA residues in this entry.

5.5 Carbohydrates [i](#)

There are no oligosaccharides in this entry.

5.6 Ligand geometry [i](#)

2 ligands are modelled in this entry.

In the following table, the Counts columns list the number of bonds (or angles) for which Mogul statistics could be retrieved, the number of bonds (or angles) that are observed in the model and the number of bonds (or angles) that are defined in the Chemical Component Dictionary. The Link column lists molecule types, if any, to which the group is linked. The Z score for a bond length (or angle) is the number of standard deviations the observed value is removed from the expected value. A bond length (or angle) with $|Z| > 2$ is considered an outlier worth inspection. RMSZ is the root-mean-square of all Z scores of the bond lengths (or angles).

Mol	Type	Chain	Res	Link	Bond lengths			Bond angles		
					Counts	RMSZ	# Z > 2	Counts	RMSZ	# Z > 2
2	A1ICU	B	601	-	37,37,37	1.01	2 (5%)	47,53,53	1.50	9 (19%)
2	A1ICU	A	601	-	37,37,37	1.07	3 (8%)	47,53,53	1.28	5 (10%)

In the following table, the Chirals column lists the number of chiral outliers, the number of chiral centers analysed, the number of these observed in the model and the number defined in the Chemical Component Dictionary. Similar counts are reported in the Torsion and Rings columns. '-' means no outliers of that kind were identified.

Mol	Type	Chain	Res	Link	Chirals	Torsions	Rings
2	A1ICU	B	601	-	-	0/17/40/40	0/5/5/5
2	A1ICU	A	601	-	-	0/17/40/40	0/5/5/5

All (5) bond length outliers are listed below:

Mol	Chain	Res	Type	Atoms	Z	Observed(Å)	Ideal(Å)
2	A	601	A1ICU	C9-N2	3.83	1.50	1.46

Continued on next page...

Continued from previous page...

Mol	Chain	Res	Type	Atoms	Z	Observed(Å)	Ideal(Å)
2	A	601	A1ICU	C11-C10	3.13	1.55	1.52
2	B	601	A1ICU	C16-C17	-3.07	1.51	1.55
2	B	601	A1ICU	C11-C10	2.91	1.55	1.52
2	A	601	A1ICU	C16-C17	-2.47	1.51	1.55

All (14) bond angle outliers are listed below:

Mol	Chain	Res	Type	Atoms	Z	Observed(°)	Ideal(°)
2	B	601	A1ICU	C21-C16-C17	3.61	113.60	109.58
2	B	601	A1ICU	O1-C8-N2	3.61	125.35	120.78
2	B	601	A1ICU	C9-N2-C7	-3.30	114.74	119.30
2	B	601	A1ICU	O3-C15-C16	-3.25	116.15	121.88
2	B	601	A1ICU	C10-C9-N2	-3.23	107.68	114.00
2	A	601	A1ICU	C5-C8-N2	3.15	115.64	113.80
2	A	601	A1ICU	O3-C15-C16	-3.02	116.56	121.88
2	B	601	A1ICU	C14-C13-N3	2.85	116.56	110.92
2	B	601	A1ICU	C7-N2-C8	2.38	123.76	121.90
2	B	601	A1ICU	C14-C10-C11	-2.37	107.08	109.85
2	A	601	A1ICU	C10-C9-N2	-2.32	109.47	114.00
2	A	601	A1ICU	C14-C13-N3	2.29	115.44	110.92
2	A	601	A1ICU	C16-C15-N3	2.26	123.28	118.99
2	B	601	A1ICU	C11-C12-N3	2.03	114.93	110.92

There are no chirality outliers.

There are no torsion outliers.

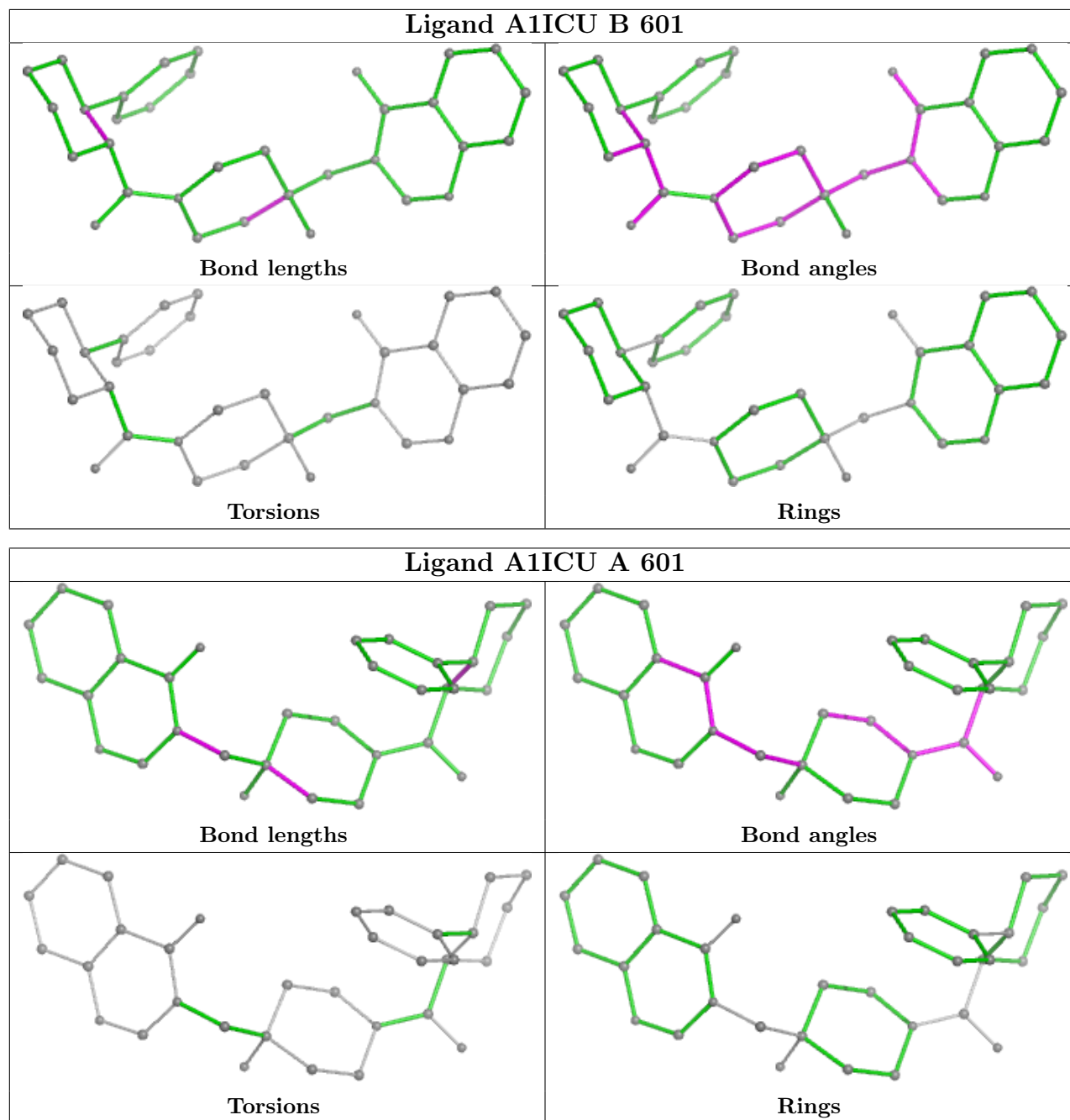
There are no ring outliers.

2 monomers are involved in 4 short contacts:

Mol	Chain	Res	Type	Clashes	Symm-Clashes
2	B	601	A1ICU	2	0
2	A	601	A1ICU	2	0

The following is a two-dimensional graphical depiction of Mogul quality analysis of bond lengths, bond angles, torsion angles, and ring geometry for all instances of the Ligand of Interest. In addition, ligands with molecular weight > 250 and outliers as shown on the validation Tables will also be included. For torsion angles, if less than 5% of the Mogul distribution of torsion angles is within 10 degrees of the torsion angle in question, then that torsion angle is considered an outlier. Any bond that is central to one or more torsion angles identified as an outlier by Mogul will be highlighted in the graph. For rings, the root-mean-square deviation (RMSD) between the ring in question and similar rings identified by Mogul is calculated over all ring torsion angles. If the average RMSD is greater than 60 degrees and the minimal RMSD between the ring in question and

any Mogul-identified rings is also greater than 60 degrees, then that ring is considered an outlier. The outliers are highlighted in purple. The color gray indicates Mogul did not find sufficient equivalents in the CSD to analyse the geometry.



5.7 Other polymers [\(i\)](#)

There are no such residues in this entry.

5.8 Polymer linkage issues

There are no chain breaks in this entry.

6 Fit of model and data [i](#)

6.1 Protein, DNA and RNA chains [i](#)

In the following table, the column labelled ‘#RSRZ > 2’ contains the number (and percentage) of RSRZ outliers, followed by percent RSRZ outliers for the chain as percentile scores relative to all X-ray entries and entries of similar resolution. The OWAB column contains the minimum, median, 95th percentile and maximum values of the occupancy-weighted average B-factor per residue. The column labelled ‘Q < 0.9’ lists the number of (and percentage) of residues with an average occupancy less than 0.9.

Mol	Chain	Analysed	<RSRZ>	#RSRZ>2	OWAB(Å ²)	Q<0.9
1	A	330/355 (92%)	-0.96	0 100 100	57, 89, 136, 184	0
1	B	336/355 (94%)	-0.97	0 100 100	46, 86, 128, 154	0
All	All	666/710 (93%)	-0.97	0 100 100	46, 87, 132, 184	0

There are no RSRZ outliers to report.

6.2 Non-standard residues in protein, DNA, RNA chains [i](#)

There are no non-standard protein/DNA/RNA residues in this entry.

6.3 Carbohydrates [i](#)

There are no monosaccharides in this entry.

6.4 Ligands [i](#)

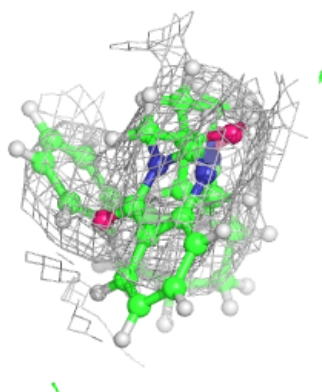
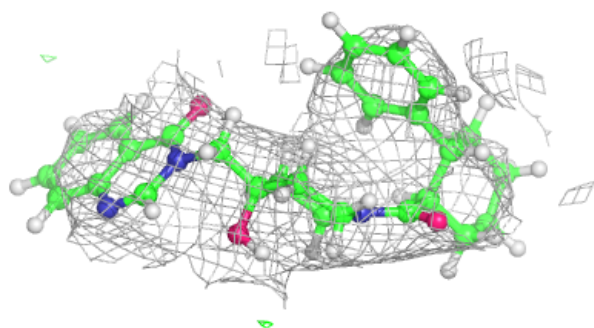
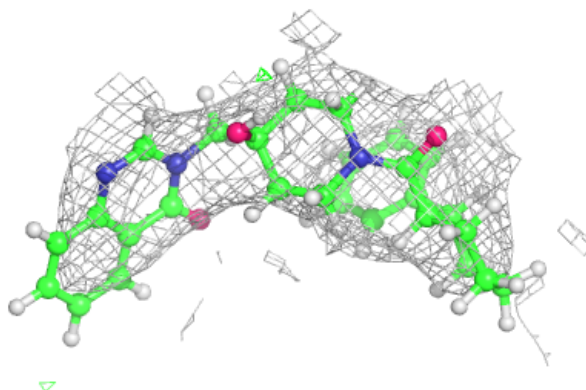
In the following table, the Atoms column lists the number of modelled atoms in the group and the number defined in the chemical component dictionary. The B-factors column lists the minimum, median, 95th percentile and maximum values of B factors of atoms in the group. The column labelled ‘Q < 0.9’ lists the number of atoms with occupancy less than 0.9.

Mol	Type	Chain	Res	Atoms	RSCC	RSR	B-factors(Å ²)	Q<0.9
2	A1ICU	A	601	33/33	0.95	0.07	69,106,120,125	0
2	A1ICU	B	601	33/33	0.98	0.05	56,74,84,87	0

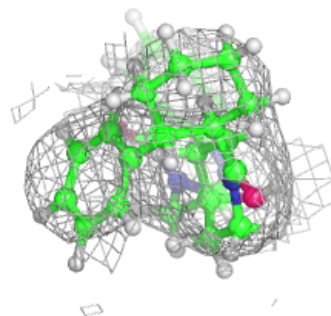
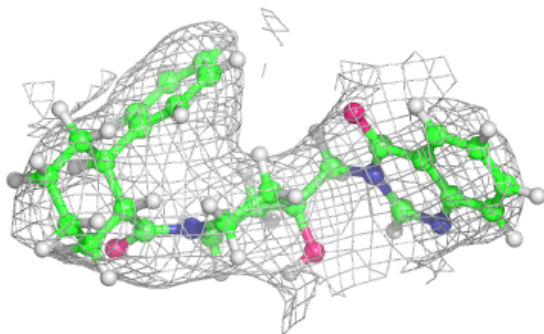
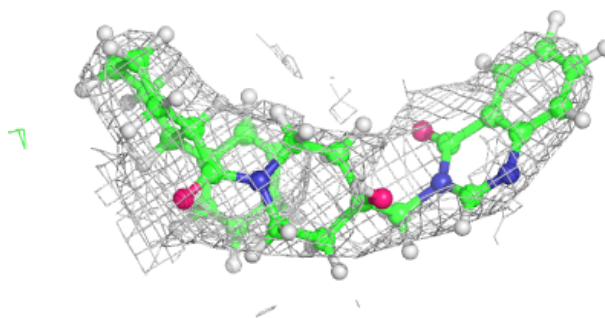
The following is a graphical depiction of the model fit to experimental electron density of all instances of the Ligand of Interest. In addition, ligands with molecular weight > 250 and outliers as shown on the geometry validation Tables will also be included. Each fit is shown from different orientation to approximate a three-dimensional view.

Electron density around A1ICU A 601:

$2mF_o-DF_c$ (at 0.7 rmsd) in gray
 mF_o-DF_c (at 3 rmsd) in purple (negative)
and green (positive)

**Electron density around A1ICU B 601:**

$2mF_o-DF_c$ (at 0.7 rmsd) in gray
 mF_o-DF_c (at 3 rmsd) in purple (negative)
and green (positive)



6.5 Other polymers [i](#)

There are no such residues in this entry.