



Full wwPDB X-ray Structure Validation Report ⓘ

Oct 29, 2024 – 01:59 pm GMT

PDB ID : 9FIU
Title : Structure-guided discovery of selective USP7 inhibitors with in vivo activity
Authors : Baker, L.M.; Murray, J.; Hubbard, R.E.; Whitehead, N.
Deposited on : 2024-05-29
Resolution : 3.37 Å(reported)

This is a Full wwPDB X-ray Structure Validation Report for a publicly released PDB entry.

We welcome your comments at validation@mail.wwpdb.org

A user guide is available at

<https://www.wwpdb.org/validation/2017/XrayValidationReportHelp>

with specific help available everywhere you see the ⓘ symbol.

The types of validation reports are described at

<http://www.wwpdb.org/validation/2017/FAQs#types>.

The following versions of software and data (see [references ⓘ](#)) were used in the production of this report:

MolProbity : 4.02b-467
Mogul : 1.8.4, CSD as541be (2020)
Xtriage (Phenix) : 1.13
EDS : 3.0
buster-report : 1.1.7 (2018)
Percentile statistics : 20231227.v01 (using entries in the PDB archive December 27th 2023)
CCP4 : 9.0.003 (Gargrove)
Density-Fitness : 1.0.11
Ideal geometry (proteins) : Engh & Huber (2001)
Ideal geometry (DNA, RNA) : Parkinson et al. (1996)
Validation Pipeline (wwPDB-VP) : 2.39

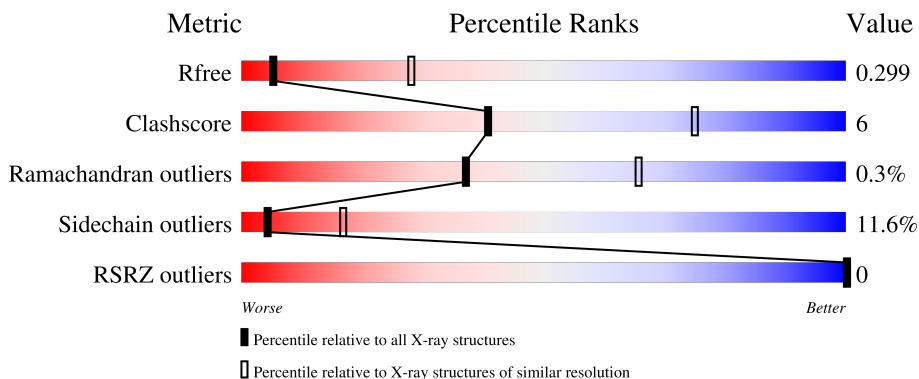
1 Overall quality at a glance

The following experimental techniques were used to determine the structure:

X-RAY DIFFRACTION

The reported resolution of this entry is 3.37 Å.

Percentile scores (ranging between 0-100) for global validation metrics of the entry are shown in the following graphic. The table shows the number of entries on which the scores are based.



Metric	Whole archive (#Entries)	Similar resolution (#Entries, resolution range(Å))
R_{free}	164625	1137 (3.44-3.32)
Clashscore	180529	1165 (3.44-3.32)
Ramachandran outliers	177936	1164 (3.44-3.32)
Sidechain outliers	177891	1164 (3.44-3.32)
RSRZ outliers	164620	1137 (3.44-3.32)

The table below summarises the geometric issues observed across the polymeric chains and their fit to the electron density. The red, orange, yellow and green segments of the lower bar indicate the fraction of residues that contain outliers for ≥ 3 , 2, 1 and 0 types of geometric quality criteria respectively. A grey segment represents the fraction of residues that are not modelled. The numeric value for each fraction is indicated below the corresponding segment, with a dot representing fractions $\leq 5\%$. The upper red bar (where present) indicates the fraction of residues that have poor fit to the electron density. The numeric value is given above the bar.

Mol	Chain	Length	Quality of chain
1	A	355	 70% 21% • 6%
1	B	355	 74% 15% • 6%

2 Entry composition [i](#)

There are 2 unique types of molecules in this entry. The entry contains 10720 atoms, of which 5298 are hydrogens and 0 are deuteriums.

In the tables below, the ZeroOcc column contains the number of atoms modelled with zero occupancy, the AltConf column contains the number of residues with at least one atom in alternate conformation and the Trace column contains the number of residues modelled with at most 2 atoms.

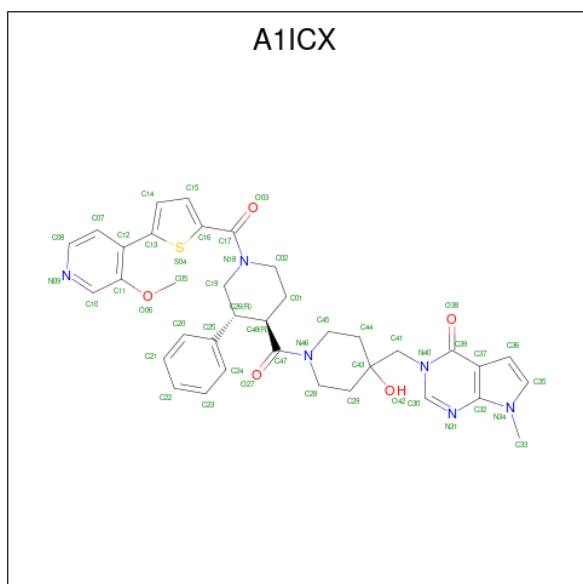
- Molecule 1 is a protein called Ubiquitin carboxyl-terminal hydrolase 7.

Mol	Chain	Residues	Atoms					ZeroOcc	AltConf	Trace	
			Total	C	H	N	O				S
1	A	332	5278	1686	2614	450	512	16	85	0	0
1	B	333	5270	1682	2608	452	512	16	88	0	0

There are 4 discrepancies between the modelled and reference sequences:

Chain	Residue	Modelled	Actual	Comment	Reference
A	206	GLY	-	expression tag	UNP Q93009
A	409	ALA	PHE	engineered mutation	UNP Q93009
B	206	GLY	-	expression tag	UNP Q93009
B	409	ALA	PHE	engineered mutation	UNP Q93009

- Molecule 2 is 3-[[1-[(3 {R},4 {R})-1-[5-(3-methoxy-pyridin-4-yl)thiophen-2-yl]carbonyl-3-phenyl-piperidin-4-yl]carbonyl-4-oxidanyl-piperidin-4-yl]methyl]-7-methyl-pyrrolo[2,3-d]pyrimidin-4-one (three-letter code: A1ICX) (formula: C₃₆H₃₈N₆O₅S) (labeled as "Ligand of Interest" by depositor).



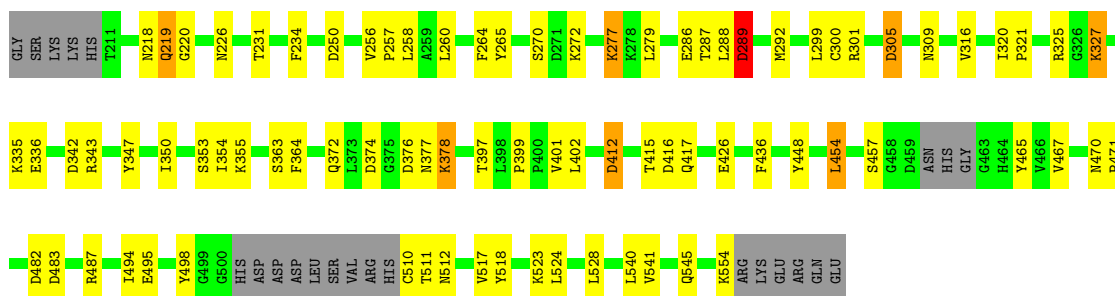
Mol	Chain	Residues	Atoms					ZeroOcc	AltConf	
			Total	C	H	N	O			S
2	A	1	86	36	38	6	5	1	4	0
2	B	1	86	36	38	6	5	1	4	0

3 Residue-property plots [i](#)

These plots are drawn for all protein, RNA, DNA and oligosaccharide chains in the entry. The first graphic for a chain summarises the proportions of the various outlier classes displayed in the second graphic. The second graphic shows the sequence view annotated by issues in geometry and electron density. Residues are color-coded according to the number of geometric quality criteria for which they contain at least one outlier: green = 0, yellow = 1, orange = 2 and red = 3 or more. A red dot above a residue indicates a poor fit to the electron density ($RSRZ > 2$). Stretches of 2 or more consecutive residues without any outlier are shown as a green connector. Residues present in the sample, but not in the model, are shown in grey.

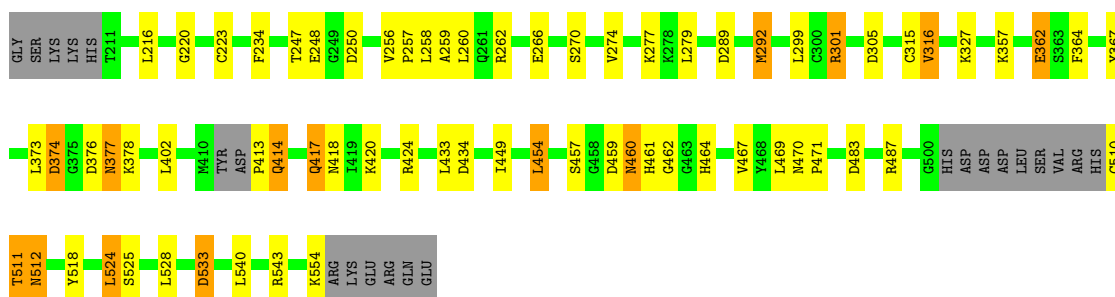
- Molecule 1: Ubiquitin carboxyl-terminal hydrolase 7

Chain A: 



- Molecule 1: Ubiquitin carboxyl-terminal hydrolase 7

Chain B: 



4 Data and refinement statistics i

Property	Value	Source
Space group	P 1 21 1	Depositor
Cell constants a, b, c, α , β , γ	74.88Å 68.23Å 76.88Å 90.00° 92.22° 90.00°	Depositor
Resolution (Å)	52.59 – 3.37 52.59 – 3.37	Depositor EDS
% Data completeness (in resolution range)	96.4 (52.59-3.37) 96.4 (52.59-3.37)	Depositor EDS
R_{merge}	0.07	Depositor
R_{sym}	(Not available)	Depositor
$\langle I/\sigma(I) \rangle$ ¹	2.46 (at 3.40Å)	Xtrriage
Refinement program	REFMAC 5.8.0425	Depositor
R, R_{free}	0.188 , 0.297 0.187 , 0.299	Depositor DCC
R_{free} test set	556 reflections (5.18%)	wwPDB-VP
Wilson B-factor (Å ²)	108.8	Xtrriage
Anisotropy	0.407	Xtrriage
Bulk solvent k_{sol} (e/Å ³), B_{sol} (Å ²)	0.37 , 89.5	EDS
L-test for twinning ²	$\langle L \rangle = 0.51$, $\langle L^2 \rangle = 0.34$	Xtrriage
Estimated twinning fraction	0.000 for l,k,-h 0.030 for h,-k,-l 0.023 for l,-k,h	Xtrriage
F_o, F_c correlation	0.96	EDS
Total number of atoms	10720	wwPDB-VP
Average B, all atoms (Å ²)	122.0	wwPDB-VP

Xtrriage's analysis on translational NCS is as follows: *The analyses of the Patterson function reveals a significant off-origin peak that is 30.51 % of the origin peak, indicating pseudo-translational symmetry. The chance of finding a peak of this or larger height randomly in a structure without pseudo-translational symmetry is equal to 1.2929e-03. The detected translational NCS is most likely also responsible for the elevated intensity ratio.*

¹Intensities estimated from amplitudes.

²Theoretical values of $\langle |L| \rangle$, $\langle L^2 \rangle$ for acentric reflections are 0.5, 0.333 respectively for untwinned datasets, and 0.375, 0.2 for perfectly twinned datasets.

5 Model quality [i](#)

5.1 Standard geometry [i](#)

Bond lengths and bond angles in the following residue types are not validated in this section: A1ICX

The Z score for a bond length (or angle) is the number of standard deviations the observed value is removed from the expected value. A bond length (or angle) with $|Z| > 5$ is considered an outlier worth inspection. RMSZ is the root-mean-square of all Z scores of the bond lengths (or angles).

Mol	Chain	Bond lengths		Bond angles	
		RMSZ	# Z >5	RMSZ	# Z >5
1	A	0.35	0/2717	0.75	1/3669 (0.0%)
1	B	0.35	0/2715	0.78	1/3666 (0.0%)
All	All	0.35	0/5432	0.77	2/7335 (0.0%)

Chiral center outliers are detected by calculating the chiral volume of a chiral center and verifying if the center is modelled as a planar moiety or with the opposite hand. A planarity outlier is detected by checking planarity of atoms in a peptide group, atoms in a mainchain group or atoms of a sidechain that are expected to be planar.

Mol	Chain	#Chirality outliers	#Planarity outliers
1	A	0	1

There are no bond length outliers.

All (2) bond angle outliers are listed below:

Mol	Chain	Res	Type	Atoms	Z	Observed($^{\circ}$)	Ideal($^{\circ}$)
1	B	460	ASN	CB-CA-C	-8.54	93.31	110.40
1	A	482	ASP	CB-CA-C	5.12	120.65	110.40

There are no chirality outliers.

All (1) planarity outliers are listed below:

Mol	Chain	Res	Type	Group
1	A	220	GLY	Peptide

5.2 Too-close contacts [i](#)

In the following table, the Non-H and H(model) columns list the number of non-hydrogen atoms and hydrogen atoms in the chain respectively. The H(added) column lists the number of hydrogen

atoms added and optimized by MolProbity. The Clashes column lists the number of clashes within the asymmetric unit, whereas Symm-Clashes lists symmetry-related clashes.

Mol	Chain	Non-H	H(model)	H(added)	Clashes	Symm-Clashes
1	A	2664	2614	2590	36	0
1	B	2662	2608	2581	34	0
2	A	48	38	0	1	0
2	B	48	38	0	1	0
All	All	5422	5298	5171	68	0

The all-atom clashscore is defined as the number of clashes found per 1000 atoms (including hydrogen atoms). The all-atom clashscore for this structure is 6.

All (68) close contacts within the same asymmetric unit are listed below, sorted by their clash magnitude.

Atom-1	Atom-2	Interatomic distance (Å)	Clash overlap (Å)
1:A:219:GLN:HA	1:B:461:HIS:HB3	1.62	0.80
1:B:454:LEU:HD22	1:B:467:VAL:HG23	1.78	0.66
1:B:413:PRO:HB2	1:B:414:GLN:HE21	1.62	0.65
1:B:289:ASP:HA	1:B:292:MET:SD	2.36	0.65
1:B:256:VAL:HB	1:B:257:PRO:HD3	1.78	0.65
1:A:335:LYS:HD2	1:A:372:GLN:HE22	1.63	0.62
1:A:353:SER:O	1:A:363:SER:OG	2.14	0.62
1:A:347:TYR:CE2	1:A:350:ILE:HD11	2.39	0.58
1:B:234:PHE:CD1	1:B:471:PRO:HB3	2.38	0.57
1:B:216:LEU:HD23	1:B:274:VAL:HB	1.87	0.57
1:B:301:ARG:CZ	1:B:301:ARG:HA	2.37	0.55
1:B:420:LYS:CE	1:B:512:ASN:HD21	2.20	0.55
1:A:454:LEU:N	1:A:454:LEU:HD23	2.23	0.54
1:A:270:SER:OG	1:A:272:LYS:O	2.25	0.53
1:A:364:PHE:HB3	1:A:436:PHE:CE1	2.44	0.52
1:B:424:ARG:HG2	1:B:424:ARG:HH11	1.74	0.51
1:A:494:ILE:HG22	1:A:495:GLU:N	2.24	0.51
1:B:457:SER:HB3	1:B:511:THR:HB	1.93	0.51
1:A:524:LEU:HD22	1:A:528:LEU:HD12	1.92	0.50
1:A:288:LEU:O	1:A:289:ASP:HB3	2.12	0.50
1:A:454:LEU:HD22	1:A:467:VAL:HG23	1.94	0.49
1:B:457:SER:HA	1:B:511:THR:HA	1.94	0.49
1:A:305:ASP:O	1:A:309:ASN:ND2	2.45	0.49
1:A:234:PHE:CD1	1:A:471:PRO:HB3	2.48	0.48
1:A:256:VAL:HB	1:A:257:PRO:HD3	1.94	0.48
1:A:288:LEU:HD12	1:B:220:GLY:O	2.14	0.47
1:A:412:ASP:HB2	1:A:417:GLN:O	2.14	0.47

Continued on next page...

Continued from previous page...

Atom-1	Atom-2	Interatomic distance (Å)	Clash overlap (Å)
1:A:448:TYR:HB3	1:A:518:TYR:HB3	1.95	0.47
1:A:231:THR:HG21	1:A:517:VAL:HG21	1.96	0.47
1:B:462:GLY:HA2	2:B:601:A1ICX:S04	2.55	0.47
1:A:426:GLU:HG3	1:A:498:TYR:CE2	2.50	0.47
1:A:231:THR:CG2	1:A:517:VAL:HG21	2.45	0.46
1:A:412:ASP:HB3	1:A:416:ASP:N	2.31	0.46
1:B:357:LYS:HB3	1:B:362:GLU:HB3	1.96	0.46
1:A:301:ARG:O	1:A:305:ASP:HB2	2.15	0.46
1:A:524:LEU:CD2	1:A:528:LEU:HD12	2.46	0.46
1:B:373:LEU:HA	1:B:377:ASN:HB2	1.98	0.46
1:A:374:ASP:O	1:A:378:LYS:N	2.48	0.46
1:B:364:PHE:O	1:B:367:TYR:N	2.48	0.46
1:B:524:LEU:HD22	1:B:528:LEU:HD12	1.98	0.45
1:A:354:ILE:HG13	1:A:355:LYS:N	2.31	0.45
1:A:454:LEU:HD22	1:A:467:VAL:CG2	2.46	0.44
1:B:266:GLU:O	1:B:270:SER:HB3	2.16	0.44
1:A:457:SER:HA	1:A:510:CYS:O	2.17	0.44
1:B:247:THR:O	1:B:543:ARG:NH1	2.50	0.44
1:B:533:ASP:N	1:B:533:ASP:OD1	2.50	0.44
1:B:315:CYS:SG	1:B:316:VAL:N	2.91	0.44
1:B:413:PRO:HD2	1:B:417:GLN:H	1.83	0.44
1:A:218:ASN:HA	1:A:226:ASN:HD21	1.82	0.44
1:A:541:VAL:O	1:A:545:GLN:HG2	2.17	0.44
1:B:449:ILE:O	1:B:518:TYR:HA	2.19	0.43
1:B:292:MET:SD	1:B:292:MET:N	2.88	0.43
1:A:264:PHE:O	1:A:265:TYR:C	2.57	0.42
1:B:454:LEU:HD22	1:B:467:VAL:CG2	2.47	0.42
1:A:465:TYR:OH	2:A:601:A1ICX:O27	2.21	0.42
1:B:457:SER:CB	1:B:511:THR:HB	2.49	0.42
1:B:459:ASP:O	1:B:460:ASN:C	2.58	0.41
1:B:374:ASP:O	1:B:378:LYS:N	2.52	0.41
1:B:433:LEU:O	1:B:434:ASP:C	2.58	0.41
1:B:315:CYS:SG	1:B:316:VAL:HB	2.60	0.41
1:A:320:ILE:HB	1:A:321:PRO:CD	2.51	0.41
1:A:219:GLN:CD	1:A:277:LYS:HD3	2.41	0.41
1:B:259:ALA:HA	1:B:262:ARG:NH1	2.36	0.40
1:B:414:GLN:H	1:B:414:GLN:HG3	1.51	0.40
1:A:219:GLN:NE2	1:A:277:LYS:HD2	2.37	0.40
1:A:327:LYS:HG2	1:A:397:THR:OG1	2.21	0.40
1:A:399:PRO:HG2	1:A:401:VAL:O	2.22	0.40
1:B:454:LEU:N	1:B:454:LEU:CD2	2.85	0.40

There are no symmetry-related clashes.

5.3 Torsion angles [i](#)

5.3.1 Protein backbone [i](#)

In the following table, the Percentiles column shows the percent Ramachandran outliers of the chain as a percentile score with respect to all X-ray entries followed by that with respect to entries of similar resolution.

The Analysed column shows the number of residues for which the backbone conformation was analysed, and the total number of residues.

Mol	Chain	Analysed	Favoured	Allowed	Outliers	Percentiles	
1	A	326/355 (92%)	302 (93%)	23 (7%)	1 (0%)	37	66
1	B	327/355 (92%)	299 (91%)	27 (8%)	1 (0%)	37	66
All	All	653/710 (92%)	601 (92%)	50 (8%)	2 (0%)	37	66

All (2) Ramachandran outliers are listed below:

Mol	Chain	Res	Type
1	A	289	ASP
1	B	223	CYS

5.3.2 Protein sidechains [i](#)

In the following table, the Percentiles column shows the percent sidechain outliers of the chain as a percentile score with respect to all X-ray entries followed by that with respect to entries of similar resolution.

The Analysed column shows the number of residues for which the sidechain conformation was analysed, and the total number of residues.

Mol	Chain	Analysed	Rotameric	Outliers	Percentiles	
1	A	293/320 (92%)	259 (88%)	34 (12%)	4	17
1	B	292/320 (91%)	258 (88%)	34 (12%)	4	17
All	All	585/640 (91%)	517 (88%)	68 (12%)	4	17

All (68) residues with a non-rotameric sidechain are listed below:

Mol	Chain	Res	Type
1	A	219	GLN

Continued on next page...

Continued from previous page...

Mol	Chain	Res	Type
1	A	250	ASP
1	A	258	LEU
1	A	260	LEU
1	A	277	LYS
1	A	279	LEU
1	A	286	GLU
1	A	287	THR
1	A	289	ASP
1	A	292	MET
1	A	299	LEU
1	A	300	CYS
1	A	305	ASP
1	A	316	VAL
1	A	325	ARG
1	A	327	LYS
1	A	336	GLU
1	A	342	ASP
1	A	343	ARG
1	A	376	ASP
1	A	377	ASN
1	A	378	LYS
1	A	402	LEU
1	A	412	ASP
1	A	415	THR
1	A	454	LEU
1	A	470	ASN
1	A	483	ASP
1	A	487	ARG
1	A	511	THR
1	A	512	ASN
1	A	523	LYS
1	A	540	LEU
1	A	554	LYS
1	B	248	GLU
1	B	250	ASP
1	B	258	LEU
1	B	260	LEU
1	B	277	LYS
1	B	279	LEU
1	B	292	MET
1	B	299	LEU
1	B	301	ARG

Continued on next page...

Continued from previous page...

Mol	Chain	Res	Type
1	B	305	ASP
1	B	316	VAL
1	B	327	LYS
1	B	362	GLU
1	B	374	ASP
1	B	376	ASP
1	B	377	ASN
1	B	402	LEU
1	B	414	GLN
1	B	417	GLN
1	B	418	ASN
1	B	454	LEU
1	B	464	HIS
1	B	469	LEU
1	B	470	ASN
1	B	483	ASP
1	B	487	ARG
1	B	510	CYS
1	B	511	THR
1	B	512	ASN
1	B	524	LEU
1	B	525	SER
1	B	533	ASP
1	B	540	LEU
1	B	554	LYS

Sometimes sidechains can be flipped to improve hydrogen bonding and reduce clashes. All (14) such sidechains are listed below:

Mol	Chain	Res	Type
1	A	218	ASN
1	A	372	GLN
1	A	403	HIS
1	A	417	GLN
1	A	422	ASN
1	A	496	HIS
1	A	512	ASN
1	B	372	GLN
1	B	414	GLN
1	B	417	GLN
1	B	422	ASN
1	B	496	HIS
1	B	512	ASN

Continued on next page...

Continued from previous page...

Mol	Chain	Res	Type
1	B	539	GLN

5.3.3 RNA [i](#)

There are no RNA molecules in this entry.

5.4 Non-standard residues in protein, DNA, RNA chains [i](#)

There are no non-standard protein/DNA/RNA residues in this entry.

5.5 Carbohydrates [i](#)

There are no oligosaccharides in this entry.

5.6 Ligand geometry [i](#)

2 ligands are modelled in this entry.

In the following table, the Counts columns list the number of bonds (or angles) for which Mogul statistics could be retrieved, the number of bonds (or angles) that are observed in the model and the number of bonds (or angles) that are defined in the Chemical Component Dictionary. The Link column lists molecule types, if any, to which the group is linked. The Z score for a bond length (or angle) is the number of standard deviations the observed value is removed from the expected value. A bond length (or angle) with $|Z| > 2$ is considered an outlier worth inspection. RMSZ is the root-mean-square of all Z scores of the bond lengths (or angles).

Mol	Type	Chain	Res	Link	Bond lengths			Bond angles		
					Counts	RMSZ	# $ Z > 2$	Counts	RMSZ	# $ Z > 2$
2	A1ICX	A	601	-	50,54,54	3.19	13 (26%)	51,79,79	2.52	11 (21%)
2	A1ICX	B	601	-	50,54,54	3.05	13 (26%)	51,79,79	2.39	15 (29%)

In the following table, the Chirals column lists the number of chiral outliers, the number of chiral centers analysed, the number of these observed in the model and the number defined in the Chemical Component Dictionary. Similar counts are reported in the Torsion and Rings columns. '-' means no outliers of that kind were identified.

Mol	Type	Chain	Res	Link	Chirals	Torsions	Rings
2	A1ICX	A	601	-	-	2/26/56/56	0/7/7/7
2	A1ICX	B	601	-	-	4/26/56/56	0/7/7/7

All (26) bond length outliers are listed below:

Mol	Chain	Res	Type	Atoms	Z	Observed(Å)	Ideal(Å)
2	A	601	A1ICX	C12-C13	-13.36	1.35	1.48
2	B	601	A1ICX	C12-C13	-13.02	1.35	1.48
2	A	601	A1ICX	C30-N31	10.00	1.41	1.29
2	B	601	A1ICX	C30-N31	9.94	1.41	1.29
2	A	601	A1ICX	C25-C26	-7.55	1.40	1.51
2	A	601	A1ICX	C37-C39	-6.65	1.34	1.47
2	B	601	A1ICX	C25-C26	-6.62	1.42	1.51
2	B	601	A1ICX	C37-C39	-5.97	1.35	1.47
2	A	601	A1ICX	C37-C32	-4.62	1.34	1.41
2	A	601	A1ICX	C39-N40	-4.61	1.33	1.39
2	B	601	A1ICX	C39-N40	-4.45	1.33	1.39
2	B	601	A1ICX	C37-C32	-4.18	1.35	1.41
2	A	601	A1ICX	C19-C26	-4.13	1.46	1.53
2	B	601	A1ICX	C10-N09	3.00	1.40	1.34
2	A	601	A1ICX	C08-N09	2.83	1.42	1.33
2	A	601	A1ICX	C35-N34	-2.80	1.32	1.37
2	B	601	A1ICX	C35-N34	-2.80	1.32	1.37
2	A	601	A1ICX	C30-N40	2.76	1.40	1.36
2	A	601	A1ICX	C35-C36	-2.71	1.32	1.37
2	B	601	A1ICX	C41-N40	2.65	1.49	1.46
2	A	601	A1ICX	C10-N09	2.33	1.39	1.34
2	B	601	A1ICX	C19-N18	2.29	1.49	1.46
2	A	601	A1ICX	C36-C37	-2.26	1.32	1.42
2	B	601	A1ICX	C08-N09	2.26	1.40	1.33
2	B	601	A1ICX	C35-C36	-2.11	1.33	1.37
2	B	601	A1ICX	C36-C37	-2.03	1.33	1.42

All (26) bond angle outliers are listed below:

Mol	Chain	Res	Type	Atoms	Z	Observed(°)	Ideal(°)
2	A	601	A1ICX	C37-C39-N40	12.13	120.87	113.80
2	B	601	A1ICX	C37-C39-N40	10.88	120.14	113.80
2	A	601	A1ICX	N40-C30-N31	-8.16	119.25	126.34
2	B	601	A1ICX	N40-C30-N31	-6.22	120.93	126.34
2	B	601	A1ICX	C30-N40-C39	-4.82	118.15	121.90
2	A	601	A1ICX	C30-N40-C39	-4.08	118.72	121.90
2	A	601	A1ICX	C26-C19-N18	-3.92	104.87	110.65
2	B	601	A1ICX	C26-C48-C47	-3.47	106.04	111.19
2	B	601	A1ICX	C26-C19-N18	-3.16	105.99	110.65
2	B	601	A1ICX	C05-O06-C11	-2.98	113.03	117.53
2	B	601	A1ICX	C08-C07-C12	2.89	122.14	118.60
2	A	601	A1ICX	C45-N46-C28	2.69	117.81	112.62

Continued on next page...

Continued from previous page...

Mol	Chain	Res	Type	Atoms	Z	Observed(°)	Ideal(°)
2	A	601	A1ICX	C33-N34-C35	-2.64	119.87	124.89
2	B	601	A1ICX	C01-C48-C26	2.60	112.47	109.58
2	B	601	A1ICX	C35-C36-C37	2.54	108.80	105.71
2	A	601	A1ICX	C01-C48-C26	2.52	112.38	109.58
2	A	601	A1ICX	O06-C11-C10	-2.43	119.28	124.92
2	A	601	A1ICX	C26-C48-C47	-2.39	107.63	111.19
2	B	601	A1ICX	C45-N46-C28	2.27	117.00	112.62
2	B	601	A1ICX	C07-C08-N09	-2.27	119.67	123.62
2	B	601	A1ICX	O06-C11-C10	-2.25	119.71	124.92
2	B	601	A1ICX	O27-C47-C48	-2.24	117.93	121.88
2	B	601	A1ICX	O38-C39-N40	-2.23	117.95	120.78
2	A	601	A1ICX	C43-C41-N40	-2.11	109.88	114.00
2	B	601	A1ICX	C43-C41-N40	-2.04	110.01	114.00
2	A	601	A1ICX	C35-C36-C37	2.01	108.15	105.71

There are no chirality outliers.

All (6) torsion outliers are listed below:

Mol	Chain	Res	Type	Atoms
2	B	601	A1ICX	C11-C12-C13-C14
2	B	601	A1ICX	C10-C11-O06-C05
2	A	601	A1ICX	C10-C11-O06-C05
2	B	601	A1ICX	C12-C11-O06-C05
2	A	601	A1ICX	C12-C11-O06-C05
2	B	601	A1ICX	C07-C12-C13-C14

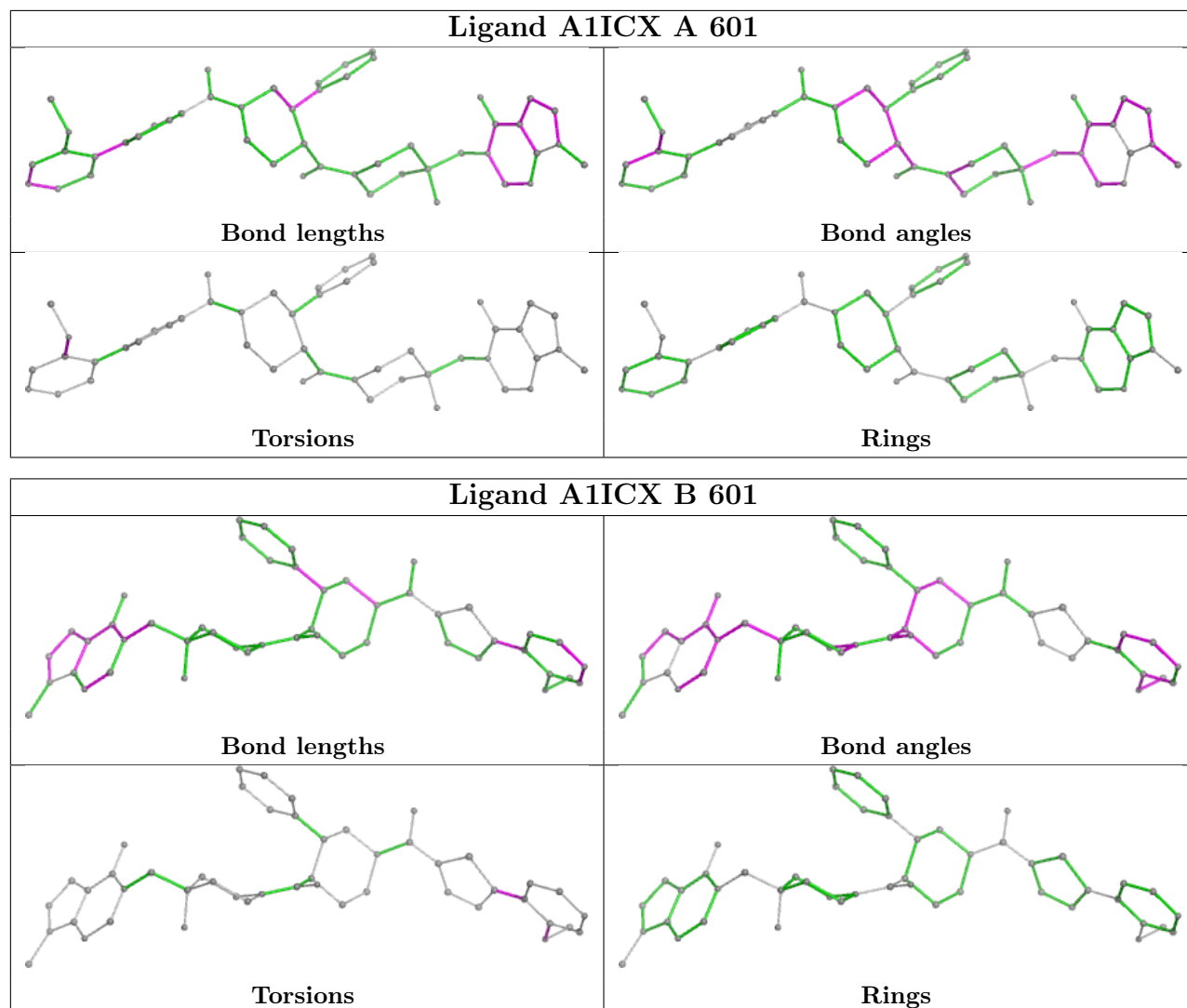
There are no ring outliers.

2 monomers are involved in 2 short contacts:

Mol	Chain	Res	Type	Clashes	Symm-Clashes
2	A	601	A1ICX	1	0
2	B	601	A1ICX	1	0

The following is a two-dimensional graphical depiction of Mogul quality analysis of bond lengths, bond angles, torsion angles, and ring geometry for all instances of the Ligand of Interest. In addition, ligands with molecular weight > 250 and outliers as shown on the validation Tables will also be included. For torsion angles, if less than 5% of the Mogul distribution of torsion angles is within 10 degrees of the torsion angle in question, then that torsion angle is considered an outlier. Any bond that is central to one or more torsion angles identified as an outlier by Mogul will be highlighted in the graph. For rings, the root-mean-square deviation (RMSD) between the ring in question and similar rings identified by Mogul is calculated over all ring torsion angles. If the average RMSD is greater than 60 degrees and the minimal RMSD between the ring in question and

any Mogul-identified rings is also greater than 60 degrees, then that ring is considered an outlier. The outliers are highlighted in purple. The color gray indicates Mogul did not find sufficient equivalents in the CSD to analyse the geometry.



5.7 Other polymers [i](#)

There are no such residues in this entry.

5.8 Polymer linkage issues [i](#)

There are no chain breaks in this entry.

6 Fit of model and data [i](#)

6.1 Protein, DNA and RNA chains [i](#)

In the following table, the column labelled ‘#RSRZ > 2’ contains the number (and percentage) of RSRZ outliers, followed by percent RSRZ outliers for the chain as percentile scores relative to all X-ray entries and entries of similar resolution. The OWAB column contains the minimum, median, 95th percentile and maximum values of the occupancy-weighted average B-factor per residue. The column labelled ‘Q < 0.9’ lists the number of (and percentage) of residues with an average occupancy less than 0.9.

Mol	Chain	Analysed	<RSRZ>	#RSRZ>2	OWAB(Å ²)	Q<0.9
1	A	332/355 (93%)	-0.97	0 100 100	78, 115, 165, 236	0
1	B	333/355 (93%)	-0.94	0 100 100	77, 118, 177, 230	0
All	All	665/710 (93%)	-0.96	0 100 100	77, 117, 171, 236	0

There are no RSRZ outliers to report.

6.2 Non-standard residues in protein, DNA, RNA chains [i](#)

There are no non-standard protein/DNA/RNA residues in this entry.

6.3 Carbohydrates [i](#)

There are no monosaccharides in this entry.

6.4 Ligands [i](#)

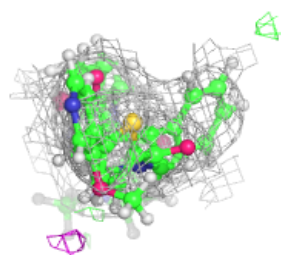
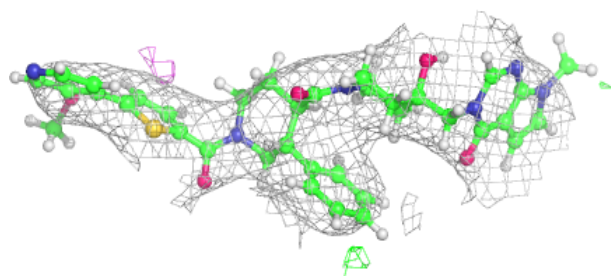
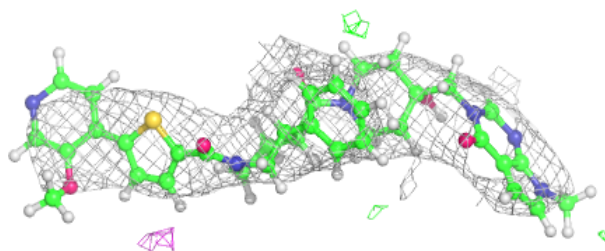
In the following table, the Atoms column lists the number of modelled atoms in the group and the number defined in the chemical component dictionary. The B-factors column lists the minimum, median, 95th percentile and maximum values of B factors of atoms in the group. The column labelled ‘Q < 0.9’ lists the number of atoms with occupancy less than 0.9.

Mol	Type	Chain	Res	Atoms	RSCC	RSR	B-factors(Å ²)	Q<0.9
2	A1ICX	A	601	48/48	0.95	0.06	83,112,135,140	4
2	A1ICX	B	601	48/48	0.97	0.04	84,106,127,157	4

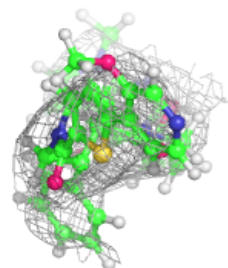
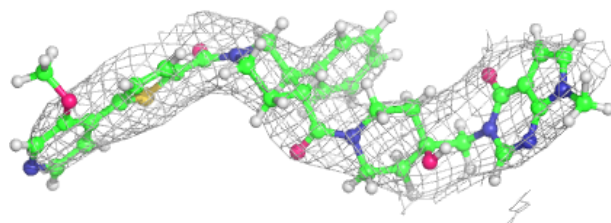
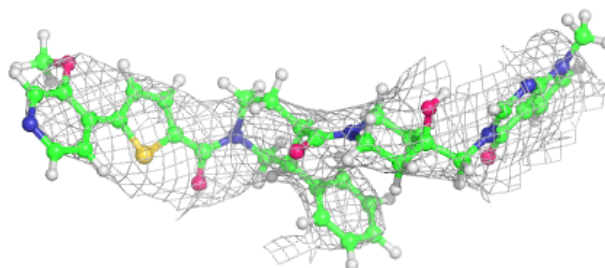
The following is a graphical depiction of the model fit to experimental electron density of all instances of the Ligand of Interest. In addition, ligands with molecular weight > 250 and outliers as shown on the geometry validation Tables will also be included. Each fit is shown from different orientation to approximate a three-dimensional view.

Electron density around A1ICX A 601:

$2mF_o-DF_c$ (at 0.7 rmsd) in gray
 mF_o-DF_c (at 3 rmsd) in purple (negative)
and green (positive)

**Electron density around A1ICX B 601:**

$2mF_o-DF_c$ (at 0.7 rmsd) in gray
 mF_o-DF_c (at 3 rmsd) in purple (negative)
and green (positive)



6.5 Other polymers [i](#)

There are no such residues in this entry.